

University of Nebraska - Lincoln

DigitalCommons@University of Nebraska - Lincoln

Faculty Publications from the Department of
Electrical and Computer Engineering

Electrical & Computer Engineering, Department
of

5-12-2020

Stochastic Simulation of Cellular Metabolism

Emalie J. Clement

Thomas T. Schulze

Ghada A. Soliman

Beata Joanna Wysocki

Paul H. Davis

See next page for additional authors

Follow this and additional works at: <https://digitalcommons.unl.edu/electricalengineeringfacpub>



Part of the [Computer Engineering Commons](#), and the [Electrical and Computer Engineering Commons](#)

This Article is brought to you for free and open access by the Electrical & Computer Engineering, Department of at DigitalCommons@University of Nebraska - Lincoln. It has been accepted for inclusion in Faculty Publications from the Department of Electrical and Computer Engineering by an authorized administrator of DigitalCommons@University of Nebraska - Lincoln.

Authors

Emalie J. Clement, Thomas T. Schulze, Ghada A. Soliman, Beata Joanna Wysocki, Paul H. Davis, and Tadeusz A. Wysocki

Stochastic Simulation of Cellular Metabolism

EMALIE J. CLEMENT¹, THOMAS T. SCHULZE², GHADA A. SOLIMAN³,
BEATA JOANNA WYSOCKI¹, PAUL H. DAVIS¹,
AND TADEUSZ A. WYSOCKI^{4,5}, (Senior Member, IEEE)

¹Department of Biology, University of Nebraska at Omaha, Omaha, NE 68182, USA

²Department of Pathology and Microbiology, University of Nebraska Medical Center, Omaha, NE 68198, USA

³Graduate School of Public Health and Health Policy, The City University of New York, New York, NY 10017, USA

⁴Department of Electrical and Computer Engineering, University of Nebraska–Lincoln, Omaha, NE 68588, USA

⁵Department of Telecommunications, Computer Science and Electrical Engineering, UTP University, 85796 Bydgoszcz, Poland

Corresponding author: Tadeusz A. Wysocki (twysocki2@unl.edu)

This work was supported in part by the NIH under Grant GM103427 (PHD), and in part by the University of Nebraska at Omaha Office of Research and Creative Activities FUSE and GRACA Program (EJC).

ABSTRACT Increased technological methods have enabled the investigation of biology at nanoscale levels. Such systems require the use of computational methods to comprehend the complex interactions that occur. The dynamics of metabolic systems have been traditionally described utilizing differential equations without fully capturing the heterogeneity of biological systems. Stochastic modeling approaches have recently emerged with the capacity to incorporate the statistical properties of such systems. However, the processing of stochastic algorithms is a computationally intensive task with intrinsic limitations. Alternatively, the queueing theory approach, historically used in the evaluation of telecommunication networks, can significantly reduce the computational power required to generate simulated results while simultaneously reducing the expansion of errors. We present here the application of queueing theory to simulate stochastic metabolic networks with high efficiency. With the use of glycolysis as a well understood biological model, we demonstrate the power of the proposed modeling methods discussed herein. Furthermore, we describe the simulation and pharmacological inhibition of glycolysis to provide an example of modeling capabilities.

INDEX TERMS Biological modeling, glycolysis, metabolic networks, metabolomics, ordinary differential equations, queueing theory, stochastic simulation.

I. INTRODUCTION

Cellular metabolism is a complex network of enzymes, metabolites, and biomolecules that are required to both maintain homeostasis and appropriately react to stimuli. Biochemists began examining cell metabolism in the mid-19th century, and with the advancements in both experimental techniques and computational capacities, increasing comprehension of metabolic intricacies has been realized. Metabolomic studies, as a relatively new field, are concerned with the detection and quantification of metabolites. The analytical side of metabolomics and metabolism can quickly become daunting when considering the complexity of the metabolome. The KEGG Compound database currently contains more than 18,000 metabolites and other small molecules, presenting scientists with a nearly impossible task to understand the complexities of metabolite dynamics [1]. Thus, the computational modeling and simulation of

metabolic systems have become essential for their investigation.

Within the last decade, the pursuit of mathematical models for biological systems that can accurately predict cellular- and systems-level behaviors, in addition to providing quantitative data, is an essential area in metabolomics requiring further investigation. Furthermore, a quantitative model with the ability to predict phenotypic changes reliably with perturbation or challenges *in silico* could lead to scientific breakthroughs not available with traditional means of inquiry. Models as a whole strive to provide a better representation of reality, aiming to represent the system of inquiry accurately. Inclusion of all cellular components directly or indirectly involved are considered too complex to model with current technology. Consequently, assumptions and simplifications are frequently applied in place of “unknowns”, where details are perceived as non-pivotal and with elements such as stochastics omitted for simplicity. Despite these adjustments, the accuracy and competence of the model are still dependent on these assumptions and simplifications.

The associate editor coordinating the review of this manuscript and approving it for publication was Rajeswari Sundararajan.

A variety of approaches are available to model the dynamics of metabolic systems; importantly, these include deterministic and stochastic modeling approaches. Frequently, kinetic models of metabolism were formed using Ordinary Differential Equations (ODE), providing a deterministic modeling approach that provides quantitative information on interactions, underlying dynamics, and system regulation components [2]. ODE models operate with the assumption that all reactions occur under evenly mixed homogenous populations with plentiful molecules available in the environment. Previously, ODEs have been used to simulate biochemical kinetics and biochemical networks. With historically limited computational power, this approach was sufficient to represent the interactions and dynamics occurring within basic biochemical networks. Rapoport *et al.* described the ability to determine metabolite concentrations of glycolytic intermediates in erythrocytes using a desktop calculator [3]. As computational power has improved over time, metabolite concentrations within a limited chain of reactions can now be determined in a matter of seconds. While ODE modeling reduces computational efforts, the assumptions and simplifications come at the cost of omitting noise and stochastic elements that are inherent in biological systems. Thus, stochastic modeling approaches could be more appropriate representations of *in vitro* and *in vivo* systems and provide the capacity to incorporate their statistical properties [2].

While ODE methods are well defined in the biological context, more recently, systems biology has extended the limits of what was previously computationally feasible: modeling the complexities of biological variation that includes the stochastic nature inherent in biology. There are different approaches to modeling stochastics in biological systems, with disparities between those often used at molecular and system levels [4]. Notably, the model proposed here is flexible in its source of stochasticity, which currently employs computed Gaussian randomness; however, an alternative probability distribution could be easily substituted if desired.

Stochastic models are typically formulated by the Chemical Master Equation (CME), with the ability to capture simple stochastic occurrences in biological systems [5], [6]. However, the drawback comes with the increased mathematical and computational complexity, considerably limiting the size of the network [7]. The Gillespie algorithm, introduced in 1977, provides exact simulation methods to simulate the CME and can be optimized with the addition of Tau leaps [8]–[10]. Recent studies have also implemented the Gillespie algorithm with additional functions (Hill) to experiment with stochastic gene expression modeling in cases where expression can operate with “switch-like” behavior [11]. Still, attempts are being made to further improve stochastic simulation and overcome the computational intensity required [2], [5], [12]–[17]. In addition to the traditional ODE approaches, some larger gene regulatory networks have been assembled with the use of Bayesian model averaging [18], [19]. A relatively recent approach to complex biological modeling is the application of queueing theory and net-

works/models. Similar to the Gillespie algorithm, queueing networks can be considered as a hidden Markov chain, and are more convenient than directly implementing the Gillespie algorithm [20].

Queueing networks have been used broadly to describe data communication networks [21], patient triage at hospitals [22], the HIV infection process [23], pharmacokinetic modeling [24], and non-viral gene delivery [25]. Moreover, the implementation as described by Martin *et al.* [25], has incorporated other cell processes, such as mitosis or cell necrosis, which are challenging to implement with an ODE approach. Queueing networks have additionally been used to develop a simple working model of metabolism [26] and enzyme-substrate interactions [27]. Briefly, queueing theory is a method of approaching stochastic simulations, doing so in a computationally less intensive process by grouping similar types of molecules and reactions [28]. Queueing theory possesses the ability to potentially describe more complex networks that would not be practical by alternative stochastic methods due to extended time to execute. Advantageously, queueing networks are capable of 1:1 mapping of biochemical pathways creating an intuitive structure that is simple to understand [29]. Since the advent of queueing models, some more specialized adaptations have been developed such as atomic routing models which have sought to optimize how objects (i.e. substrates) might flow through networks demonstrating implementation versatility [30].

We have recently developed a tool to recapitulate observed insulin responses *in vitro* and to measure the effects of Wortmannin-like inhibition on glucose uptake [31]. This system has provided insight into transient changes in molecule concentrations within the insulin signaling pathway and laid the groundwork to identify critical drug-targetable components, including those associated with insulin resistance. The application of queueing theory has provided the means to incorporate natural variation of kinetic constants and initial molecular concentrations, that are inherent in cells and tissues [32]. Herein, we present our current queueing model to simulate the stochastic effects of glucose metabolism as a demonstration to model more complex metabolic networks. We then provide qualitative comparisons of pharmacological inhibition in both simulated conditions and metabolic data from a cancer cell dataset to validate the model.

II. METHODS

Investigators frequently utilize glycolysis for model development as this pathway is well characterized biochemically. With known experimental endpoints, one can compare results and validate the computational methods in development. Consequently, we have used glycolysis here to present the modeling of metabolic networks by queueing theory. A brief overview of glycolysis and glucose metabolism can be found in Berg *et al.* [33].

We made use of previously derived mechanistic equations employing Michaelis-Menten kinetics to develop this model initially. The mathematical analyses of the rate equations

TABLE 1. Initial concentrations of glycolytic metabolites.

Metabolite	Concentration(mM)	Reference
GLC	5.0	[35]
G6P	0.039	[35]
F6P	0.013	[36]
F1,6BP	0.00231	[35]
F2,6BP	0.004	[36]
DHAP	0.02	[35]
GAP	0.00194	[36]
1,3BPG	0.000369	[36]
3PG	0.069	[35]
2PG	0.01	[36]
PEP	0.017	[35]
PYR	0.0586	[36]

Table 1 shows the intracellular concentrations for each metabolic intermediate. Metabolite concentrations (mM) are used in each simulation to initiate the model and are dynamic throughout the simulations.

and parameters used are described in Mulukutla *et al.* [34]. We aimed to build upon a previously defined model to implement our proposed queueing approach. Thus, the parameters and kinetic constants for the current model were chosen to reflect the model investigated in Mulukutla *et al.* Notably, the current model applies experimental and observed initial metabolite molar concentrations reported by Berg *et al.* [33]. When considering metabolic flux, it is essential to evaluate changes in molar concentrations instead of mass, to account for chemical modifications to metabolic products. Furthermore, our model accounts for reactions that utilize and/or produce more than one reactant or product. Concentration and parameter values that were either absent or substantially different between sources were obtained from previously published literature. Energy nucleotides and metal ions were fixed in our model for simplification and to centralize our model around the intermediate metabolites of glycolysis. Table 1 lists the initial concentrations of the metabolites measured in the simulation output, and Table 2 provides concentrations of additional substrates required for calculations, but not directly measured from the simulation.

To demonstrate the mechanics of applying queueing networks to the modeling of metabolic pathways, one can consider a pathway of N interacting metabolites M_1, \dots, M_N having initial concentrations at time instant t_0 of $C_1(t_0), \dots, C_N(t_0)$. Within the considered metabolic pathway, each metabolite M_1, \dots, M_N is involved in K_i reactions, $i = 1, \dots, N$. The corresponding reaction rates $v_{i,j}(C_1(t), \dots, C_N(t), t)$; $i = 1, \dots, N$; $j = 1, \dots, K_i$, are dependent on the instantaneous concentrations of the interacting metabolites at time t , as well as other metabolites and enzymes, and the associated time variabilities of rates are denoted as additional time dependency of t . The reaction rates can be positive or negative. A positive sign represents the production of metabolites, while a negative sign represents the consumption of metabolites. To find the concentration of a specific metabolite, $C_i(t)$,

TABLE 2. Additional metabolites and energy nucleotides.

Metabolite	Concentration(mM)	Reference
MgATP	1.52	[35]
MgADP	0.11	[35]
NAD	0.0599	[35]
NADH	0.000245	[35]
Pi	1.0	[35]
Mg	0.4	[35]
ATP	0.159	[35]
ADP	0.0937	[35]
AMP	0.03	[35]
H+	0.0000721	[37]
2,3BPG	3.1	[35]
GSH	3.2	[35]
ALA	0.2	[36]
G16BP	0.106	[35]

Intracellular concentrations required for rate equation calculations. The listed metabolites influence the kinetics of the reactions but were held constant for simulations to highlight concentration changes observed in glycolytic intermediates directly.

at given time instant t , one traditionally would solve set(s) of ODEs in the form of:

$$\begin{aligned} \frac{d}{dt} C_1(t) &= \sum_{j=1}^{K_1} v_{1,j}(C_1(t), \dots, C_N(t), t) \\ \frac{d}{dt} C_2(t) &= \sum_{j=1}^{K_2} v_{2,j}(C_1(t), \dots, C_N(t), t) \\ &\dots \\ \frac{d}{dt} C_N(t) &= \sum_{j=1}^{K_N} v_{N,j}(C_1(t), \dots, C_N(t), t) \end{aligned} \quad (1)$$

with the initial condition $C_1(t_0), \dots, C_N(t_0)$.

Given the interdependency of concentrations $C_1(t_0), \dots, C_N(t_0)$, which are frequently (and highly) non-linear, and further dependency of other time-varying circumstances, random factors, or both, achieving the solution of such sets of equations is not only computationally intensive, but also not guaranteed to produce a numerically stable result. The problem is further complicated by the fact that concentrations $C_1(t), \dots, C_N(t)$ are always non-negative, and as reported by Webb and Infantex [38], and Erbe and Wang [39], this is a non-trivial task and a solution may not exist presently. Unfortunately, there is no guarantee that ODE modeling a biological process is suited to satisfy conditions for the existence of a non-negative solution. This is due in part to the fact that biological processes will slow/halt once the variables involved drop below a certain threshold. One can force the numerical solver to produce a non-negative solution, for example, by using MATLAB[®]'s 'NonNegative' option in the 'odeset' solver [39]. However, this significantly increases computation time, and the solution may not be accurate or numerically stable. This can be more problematic for those metabolites that are not expressed in high concentrations and/or very rapidly consumed in other reactions.

For example, the metabolite glucose-6-phosphate (G6P) is also an intermediate in the Pentose Phosphate Pathway (PPP) and glycogen metabolism [40]. This presents an advantage with queuing theory for simulating systems where sections of metabolic pathways can be segmented and computationally halted instead of producing negative values, which better represents the nature of biological systems.

To find a method to simulate processes described by the set of ODEs (1), one can notice that each of the ODEs in (1) is of the form describing an average behavior of an $M(t)/M(t)/c$ non-depleting queue [20]. In general, the $M(t)/M(t)/c$ queue is such a system where arrivals form a single queue and are governed by a time-varying Poisson process. There are c servers and job service times are exponentially distributed with time-varying rates. The $M(t)/M(t)/c$ non-depleting queues are exceptional cases of queues [22] where, for each time interval, the difference between corresponding arrival rate and service rate is non-negative. Massey [20] also analyzed a general case of $M(t)/M(t)/c$ queues, for which there is no simple method to describe them utilizing ODEs, but which can be depleted to zero elements in the queue or in other words for queues that can be emptied entirely.

Hence, the $M(t)/M(t)/c$ queues can be used to model metabolic pathways for simulation purposes, and instead of solving sets of ODEs (1), one can simulate a network of interconnected $M(t)/M(t)/c$ queues, provided that the concentrations $C_1(t), \dots, C_N(t)$ are digitized. The arrival rates within this system are used as queues, and the service rates are used as reaction rates $v_{i,j}(C_1(t), \dots, C_N(t), t)$ normalized to the duration of a single simulation time step, $\Delta t_i \Delta t_j$, and the concentration increment, $\Delta(C_i(t))$, which denotes a finite change of $C_i(t)$ in a finite time increment of Δt_i . It should be noted here that instead of using the infinitely small time increment dt , as in formula (1), we use a finite time increment, Δt_i , that leads to finite concentration increment, $\Delta(C_i(t))$. Of course, the introduced discretization of concentrations introduces some quantization error, which could be minimized by choosing a smaller value of $\Delta(C_i(t))$. However, by selecting a smaller value of $\Delta(C_i(t))$, it could potentially lead to increased computation time because it may require a reduction in the time step, Δt_i , resulting in more simulation steps to achieve the desired simulation time duration. Therefore, a balance is required, and normalization of the reaction rates to achieve arrival and service rates for the queues is calculated according to the formula:

$$\mu_{i,j} = \frac{|v_{i,j}(C_1(t), \dots, C_N(t), t)| \Delta t_i}{\Delta(C_i(t))} \quad (2)$$

If the reaction rate $v_{i,j}(C_1(t), \dots, C_N(t), t)$ is positive then the corresponding normalized rate $\mu_{i,j}$, is an arrival rate while if $v_{i,j}(C_1(t), \dots, C_N(t), t)$ is negative the corresponding normalized rate, $\mu_{i,j}$, is a service rate. The instantaneous length of each queue provides a possible realization of a stochastic Markovian process representing variations in the concentration for a given metabolite. Certainly, the average changes in concentration can be achieved by averaging the

simulation results for several simulation runs. To ensure the correctness of simulation, the simulation time step, Δt_i , and the concentration increment, $\Delta(C_i(t))$, have to be selected where all $\mu_{i,j}$ are less than one, as the arrival and service rates are representative of probabilities for arrival and service of $\Delta(C_i(t))$ in the given time interval. To ensure that a single $\Delta(C_i(t))$ is processed in each time interval, the necessary condition is as follows:

$$\begin{aligned} \mu_{i,j} &\ll 1, \\ \text{for } j &= 1, \dots, K_i \text{ and } i = 1, \dots, N \end{aligned} \quad (3)$$

However, neither the simulation time step, Δt_i , nor the concentration increment, $\Delta(C_i(t))$, need be the same for all $i = 1, \dots, N$, but can be chosen in a way that minimizes simulation time while ensuring the condition (3) is satisfied. Although the time increments can be calculated dynamically within each step, for the current model, we have chosen constant time increments for every reaction. As some reaction rates are orders of magnitude different, there would be a misuse of simulation time if we use the shortest time increment where condition (3) is satisfied for every reaction. The cumulative reaction time is equal for all reactions, thus ensuring the conservation of molar masses. Given the stochastic nature of chemical reactions, where reaction rates can vary depending on environmental conditions, the reaction rates can be randomized by adding Gaussian (or other) noise to the kinetic constants used to calculate values of $v_{i,j}(C_1(t), \dots, C_N(t), t)$. The same can be performed at time instant, t_0 , for the initial concentrations, $C_1(t_0), \dots, C_N(t_0)$.

A queue representing the concentration of a single metabolite is shown in Fig. 1. The inputs to the queue represent reactions leading to the production of the metabolite, and outputs represent reactions that consume the metabolite. The cloud, connected to the queue via a bidirectional arrow, represents processes not considered (or currently unknown) that result in an imbalance between both aggregated inputs and outputs, to and from the queue, respectively. The arrivals to the queue, representing discrete increments in the concentration of the metabolite, are modeled by Poisson processes, while an exponential distribution models the service time (time intervals between two consecutive output events). These assumptions are consistent with classical queueing theory approaches [22]. Therefore, the number of arrivals in any given time interval $(t, t + \tau]$ follows a Poisson distribution with a parameter $(\mu\tau)$, such that :

$$P[(N(t + \tau) - N(t)) = k] = \frac{e^{-\mu\tau} (\mu\tau)^k}{k!} \quad (4)$$

where $N(t + \tau) - N(t) = k$ is the number of arrivals in the interval $(t, t + \tau]$. The time required for the server to process the packet is described by the exponential distribution using the probability distribution of a random variable X in terms of the rate parameter μ as follows:

$$f(x; \mu) = \begin{cases} \mu e^{-\mu x} & x \geq 0, \\ 0 & x < 0. \end{cases} \quad (5)$$

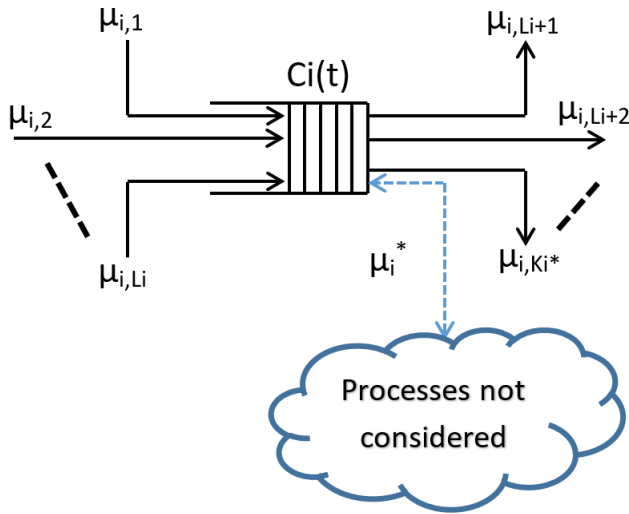


FIGURE 1. Example Queue. Queue representing concentration $C_i(t)$ of the metabolite M_i ; $\mu_{i,j}, j = 1, \dots, L_i$, are arrival rates as corresponding to processes resulting in production of metabolite M_i ; $\mu_{i,j}, j = L_i + 1, L_i + 2, \dots, K_i^*$, are service rates corresponding to processes using metabolite M_i within the model. Additional input/output pathways are included as dashed lines to account for unknown or missing reactions. Queue adapted from Wysocki et al. 2017, Simulation of Central Glucose Metabolism Using Queueing Network, IEEE International Conference on Electro Information Technology (EIT), Lincoln, NE, 2017, pp. 217-222.

Therefore, the resulting arrival process at the input of a subsequent queue to which that output of the considered server is connected, again, follows a Poisson distribution. Assuming that in total, there are c -outputs from the queue, the queue can be considered as a standard $M(t)/M(t)/c$ queue, as previously described.

For the description to be valid, both the sums of all arrival rates, $\mu_{i,j}, j = 1, \dots, L_i$, and the sum of all service rates $\mu_{i,j}, j = L_i + 1, L_i + 2, \dots, K_i^*$ must be less than one. This condition can be satisfied by either reducing the duration of time increment or increasing the concentration. Of course, reducing the time increment increases the simulation time, as more simulation steps must be considered for the duration of an experiment, while increasing the concentration unit may reduce the accuracy of the simulation results. Therefore, a balance is ideal while choosing parameters. From the perspective of implementing a simulation of the metabolic process, it is convenient to ensure that in a given simulation step, only one concentration unit of a given metabolite M_i will be processed. Assuming that there are $J_i = K_i^* - L_i$ possible reactions that can utilize metabolite M_i , the probability P_{i1} that this occurs is given by the formula:

$$P_{i1} = \sum_{j=1}^{J_i} \mu_{i,j} \prod_{\substack{k=1 \\ k \neq j}}^{J_i} (1 - \mu_{i,k}) \quad (6)$$

Assuming condition (3) is satisfied, (6) can be simplified to:

$$P_{i1} = \sum_{j=1}^{J_i} \mu_{i,j} \quad (7)$$

The conditional probability, $P_i\{j|1\}$, states if one concentration unit is processed in a simulation step, it is processed in the reaction associated with the reaction rate $\mu_{i,j}$, which is given from the definition as:

$$\begin{aligned} P_i\{j|1\} &= \frac{P_i\{j \cap 1\}}{P_{i1}} = \frac{\mu_{i,j} \prod_{\substack{k=1 \\ k \neq j}}^{J_i} (1 - \mu_{i,k})}{\sum_{l=1}^{J_i} \mu_{i,l} \prod_{\substack{k=1 \\ k \neq l}}^{J_i} (1 - \mu_{i,k})} \\ &= \frac{\mu_{i,j}}{\sum_{l=1}^{J_i} \mu_{i,l} \frac{\prod_{k=1, k \neq l}^{J_i} (1 - \mu_{i,k})}{\prod_{k=1, k \neq j}^{J_i} (1 - \mu_{i,k})}} \\ &= \frac{\mu_{i,j}}{\sum_{l=1}^{J_i} \mu_{i,l} \left(\frac{1 - \mu_{i,j}}{1 - \mu_{i,l}} \right)} \\ &= \frac{\mu_{i,j}}{(1 - \mu_{i,j}) \sum_{l=1}^{J_i} \frac{\mu_{i,l}}{1 - \mu_{i,l}}} \end{aligned} \quad (8)$$

where $P_i\{j \cap 1\}$ denotes the probability where in this specific simulation step only one concentration unit is processed and only in the reaction associated with the reaction rate $\mu_{i,j}$.

Again, if (3) is satisfied, (6) simplifies to:

$$P_i\{j|1\} = \frac{\mu_{i,j}}{\sum_{l=1}^{J_i} \mu_{i,l}} \quad (9)$$

Notably, current metabolomics datasets are often incomplete or semiquantitative data, and some connections between metabolites remain undefined. To account for unknown or missing reactions, an additional input/output pathway is included in our model for every metabolite considered, as illustrated in Fig. 1 as a dashed line connection which can be bidirectional. The rate μ_{i}^* is determined as the rate which balances the steady-state value of the concentration $C_i(t)$. If in steady-state, there is an outflow of metabolite M_i , with a resulting metabolite concentration unequal to the steady-state value that will require scaling by a factor equal to the ratio of the actual concentration and the steady-state concentration. Conversely, during inflow the scaling is inversely proportional. As previously mentioned, we have used queues to describe additional biological pathways and have provided detailed explanations of the proposed queueing theory methods [41], [42]. Additionally, the pseudocode of the queueing theory application is provided as a supplementary file.

Simulations were performed on an Intel®Core™i7-2600 CPU @ 3.40 GHz, RAM 32 GB running MATLAB®R2017b.

III. RESULTS

For the current study, our interest was in exploring the feasibility of modeling enzymatic reactions to simulate the dynamics of glycolysis utilizing queues with the addition of stochastics. Briefly, queueing theory is a mathematical tool used to describe, model, and analyze waiting lines (i.e. queues) [43]. At the molecular level, metabolites are produced and consumed through enzymatic reactions forming queues of metabolites. Production or absorption of the metabolite adds to the appropriate queue length, whereas

consumption reduces metabolites and the queue length. Discrete random processes describe both production and consumption of a given metabolite, referred to as “arrival” and “service” processes, respectively, [44]. Queues can be easily interconnected, have been successfully used to model internet function, and are well suited to metabolic networks as they are quite similar [21]. Our previous work demonstrates the ability to accurately simulate conditions seen *in vivo* using a fraction of the computing power of classical quantitative approaches [31]. We have adjusted our approach with queues to model metabolic pathways given mechanistic rate equations of all glycolytic reactions and validated experimental metabolite data.

As a core metabolic pathway common to all lifeforms, glycolysis is the enzymatic breakdown of glucose into a usable form of energy, additionally supplying intermediate metabolites as “building blocks” for connecting pathways that further support life. Naturally, glycolysis provides a scaffold to begin extending our model to incorporate additional sections of the metabolome.

For the initial development of our model, we made use of previously derived mechanistic equations employing Michaelis-Menten kinetics. For model simulations, all intermediate metabolites were represented by different queues, as described in the methods section. The queues representing metabolites are connected if there is a reaction converting one metabolite into another. Fig. 2 illustrates the assembled queueing network representing glycolysis from glucose to pyruvate.

For the stochastic simulations presented, the rate equations and model parameters were used as they are indicated in the literature (Table 1 and Table 2). Notably, the illustrated simulation pathways mimic a diagrammatic representation of metabolic flow similar to traditional biochemical illustrations. Thus, it can be more readily comprehended than sets of complex ODE equations which can quickly become daunting. Highlighting the significance of the approach, the current methods enabled rapid alteration of parameters and additional simulations under a variety of selected *in silico* conditions. For example, due to the rapid catalytic conversion of 3-PG and 2-PG in combination with the low metabolic concentrations as separate queues, the metabolites 3-PG and 2-PG were readily depleted given the 1 microsecond time scale used for the metabolite calculations. As the conversion from 3-PG to 2-PG is not a rate-limiting reaction, 3-PG and 2-PG were grouped into a single queue, avoiding the need to decrease simulation time step and unnecessary increases to simulation time.

Biological systems and reactions are inherently stochastic processes. Consequently, stochastic elements such as randomness and variation were incorporated into the model simulations. Reaction rates were randomized during simulation by adding an arbitrarily defined 10% Gaussian noise to the kinetic constants used to calculate values of $v_{i,j}(\cdot)$. The same adjustment was included for the initial concentrations at time instant t_0 for all glycolytic intermediates. During simulations,

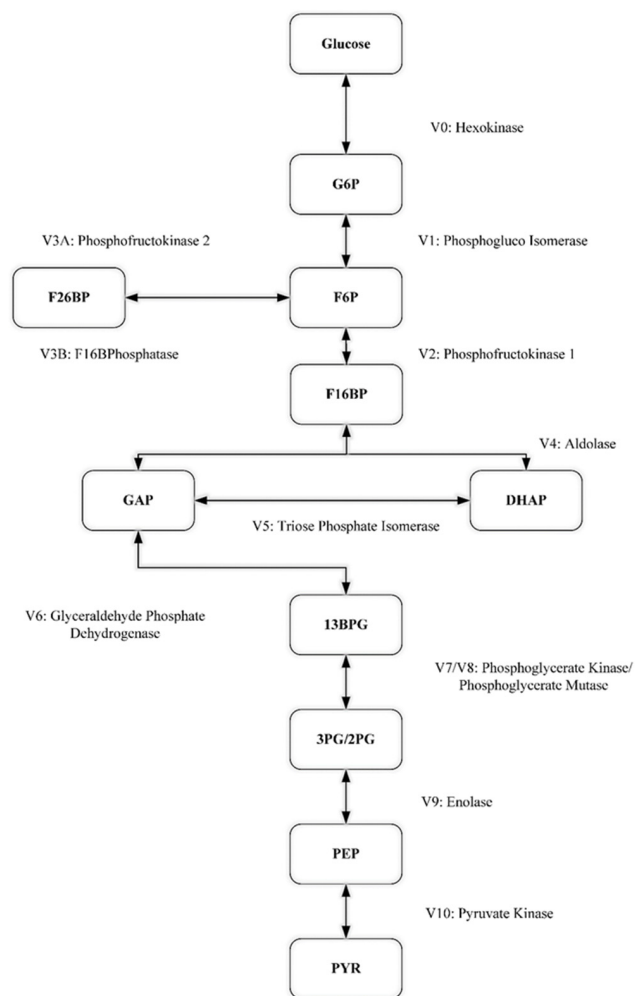


FIGURE 2. Simulated metabolic pathway from glucose to pyruvate. Arrows denote the modeled reactions. $V_i, i = 0, \dots, 10$, and $V3A, V3B$, are the reaction rates; for bidirectional arrows, the direction is determined by the sign of the corresponding reaction rate with the positive direction being from the top down. GLC, glucose; G6P, glucose 6-phosphate; F6P, fructose 6-phosphate; F16BP, fructose 1,6-bisphosphate; F26BP, fructose 2,6-bisphosphate; GAP, glyceraldehyde 3-phosphate; DHAP, dihydroxyacetone phosphate; 13BPG, 1,3-bisphosphoglycerate; 3PG, 3-phosphoglycerate; 2PG, 2-phosphoglycerate; PEP, phosphoenolpyruvate; PYR, pyruvate.

each cell is calculated independently; that is, concentrations of each molecule in the metabolic network are stochastic and bound by error values listed in the literature. The queueing theory approach causes the actual concentrations of given molecule types to be simulated as separate queues within each cell. The probability of a movement happening at any time slice from one queue to the next is determined by the relevant normalized reaction speed. Movements between storages occur at a particular time instant if a randomly drawn number from the interval $[0,1]$ at that time instant is smaller than the normalized reaction speed governing the movement.

After simulations have been performed for every considered cell, the results are averaged over the cell population. In the current model, variations of 10% glucose levels are

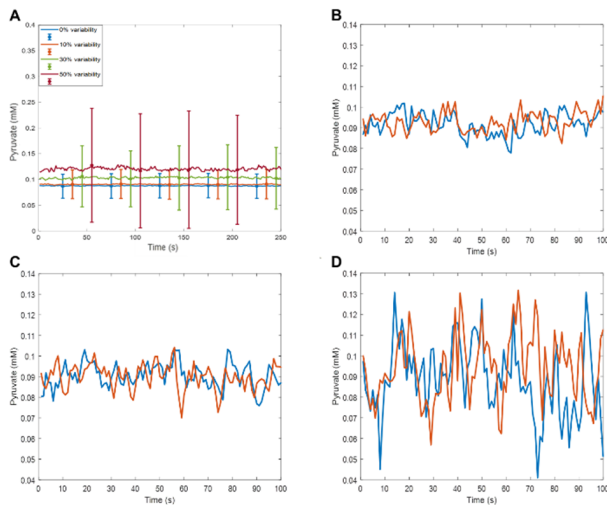


FIGURE 3. Effect of random variability of initial concentrations of all glycolytic intermediates and kinetic constants on the simulated concentration of pyruvate. A) Means and standard deviations calculated over populations of 100 independent cells with variability applied to the concentrations of the metabolites of interest and the enzymes involved in all of the glycolysis reactions. The percent variability is derived from a zero mean Gaussian with a standard deviation of $x/3$ and is multiplied by the nominal concentration value. The initial concentrations of the metabolites of interest are chosen that way, and for the concentration of other enzymes involved, the operation is repeated every second, while the simulation step is 0.1 millisecond. Computation time for simulating 100 cells for 300 seconds with 0.1 millisecond time step was 36,767.18 seconds. B) Two individual cells, 10% variability of initial concentrations and 10% Gaussian noise. C) Two individual cells, 20% variability of initial concentrations and 20% Gaussian noise. D) Two individual cells, 50% variability of initial concentrations and 50% Gaussian noise.

randomly computed for every simulated second. The simulations were run using a 1 microsecond time step, and random variations in the values of kinetic constants used in calculating reaction rates were introduced every second to simulate intrinsic biochemical noise. Initial concentrations were randomized by including an arbitrarily defined 10% Gaussian noise to reflect variability among cells in the population. The effect of such randomization on the simulated level of pyruvate is shown in Fig. 3. In Fig. 3A, it is evident that increased variability leads to greater dynamic range of pyruvate among cells. Additionally, increased variability resulted in an increased simulated average for pyruvate: a result of metabolite amounts bound at or above 0 with no set upper limits.

IV. GLYCOLYTIC FLUX

Previously, Mulukutla *et al.* aimed to assess the regulation of different isoforms of three rate-limiting glycolytic enzymes on overall pathway flux and behavior. The rate-limiting enzymes of glycolysis, hexokinase (HK), phosphofructokinase (PFK), the bifunctional enzyme phosphofructokinase-2/fructose 2,6-bisphosphatase (PFKFB), and pyruvate kinase (PK), each have multiple isoforms and may be expressed in combination within a single cell in a cell-type dependent manner. We considered regulatory mechanisms of PFK,

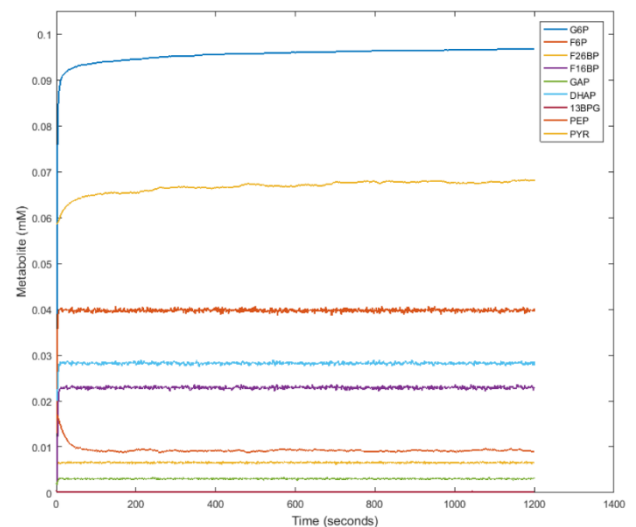


FIGURE 4. Steady-state glycolytic flux. Metabolite concentrations were simulated with an input of 5 mM glucose over a span of 1200 seconds to model an unperturbed and constant state.

PFKFB, and PK by including parameters and terms in the rate equations to consider the feedback inhibition and activation, keeping both upper and lower glycolytic regulatory loops active in our simulations. The feedback considered consists of F26BP (an important activator of glycolytic flux) and F16BP activation of PFK, F16BP activation of PK, and PEP inhibition of PFKFB activity. The parameters set to simulate the feedback loops are as follows: $K_{\text{PFKf16bp}}=0.65$ mM and $K_{\text{PKf16bp}}=0.04$ mM. The PFKFB kinase/phosphatase (K/P) ratio, the ratio between the kinase and phosphatase activity, was set to 0.1 by adjusting the value of the PFKFBase V_{max} leaving the kinase V_{max} at its original value. Different K/P ratios are given in the literature based on specific tissue and cell type. The range varies from less than 1 to 710 depending on the isoform of PFKFB expressed and the tissue type in which it is found. Notably, PFKFB is highly dependent on signaling and hormonal regulation, which can transiently change the K/P ratio given the stimulus. Signaling regulation was not considered in this model, though this component is of interest for further study. Thus, we aimed to keep F26BP relatively constant throughout the initial steady-state testing to keep the flux toward a stable level. We found that the K/P ratio of 0.1 kept F26BP and all other metabolites constant over time with the given parameters used. Therefore, the 0.1 K/P ratio was used to further test the ability of the model to simulate metabolite changes. Simulations were repeated for 30 cells, and once completed, the average concentrations of each metabolite per cell were graphed as a function of time (Fig. 4).

V. GAPDH INHIBITION

In vitro experiments and model simulations were performed to assess the performance of the proposed queueing approach. The rationale being that biologically known end-

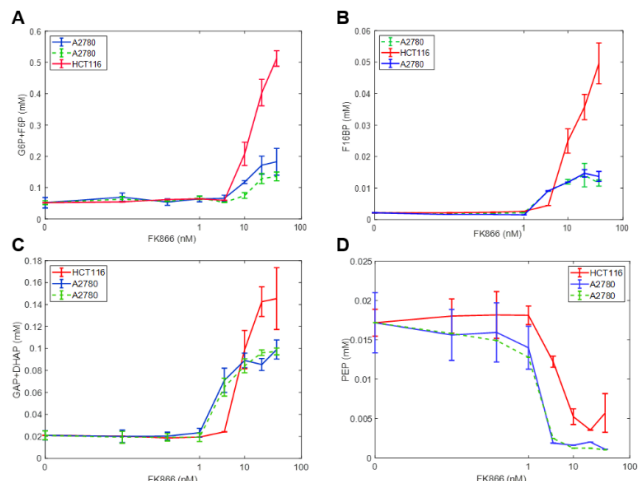


FIGURE 5. Effects of FK866 on metabolite concentrations in vitro. A) Experimental metabolomics data measuring G6P and F6P concentrations with the inhibitor FK866 in (solid blue and dashed green lines) A2780 and (red) HCT116 cancer cells, B) effects of FK866 on FBP concentrations in vitro, C) effects of FK866 on G6P and F6P concentrations in vitro, D) effects of FK866 on PEP concentrations in vitro.

points documented in literature can be used as benchmarks to demonstrate the model efficacy. FK866 is a non-competitive inhibitor of nicotinamide phosphoribosyltransferase (NAMPT), the enzyme that supplies the majority of the intracellular pool of NAD⁺, a required substrate for the GAPDH reaction. Extensive research has characterized the effects of FK866 on high glycolytic flux in cancer cells [45]–[48]. Under limited NAD⁺ concentrations, the GAPDH reaction represents a bottleneck in glycolysis, producing a block in the glycolytic flux. Experimental results show the upper-level glycolytic metabolites, including G6P, F6P, F16BP, GAP, and DHAP accumulate while the lower-level glycolytic metabolites, 13BPG, 3PG/2PG, PEP, and PYR, decrease as substrates become unavailable. Thus, we hypothesized that with the reduction of GAPDH activity and, consequently, simulation of enzyme inhibition *in silico*, the model should be able to mimic the qualitative metabolic trends seen *in vitro*. Notably, kinetics and enzyme concentrations for the specific cancer cell lines were unknown; to account for the differences between the cancerous and non-cancerous simulations, the reaction rates were scaled. The effects of FK866 are presented in the experimental data provided by [47] in Fig. 5, and by the present model outcomes of GAPDH activity inhibition in Fig. 6.

GAPDH activity was reduced by adjusting the V_{max} of the reaction catalyzed by GAPDH. Inhibition was simulated by varying GAPDH activity between 0% and 90%, with each inhibitory level run as a separate simulation for a population of 30 cells. The simulated results of GAPDH inhibition of G6P+F6P, F16BP, GAP+DHAP, and PEP, are plotted as dose-response curves in Fig. 6 to reproduce the effect of metabolite changes from experimental pharmacological inhibition of two cancerous cell lines (Fig. 5). The FK866

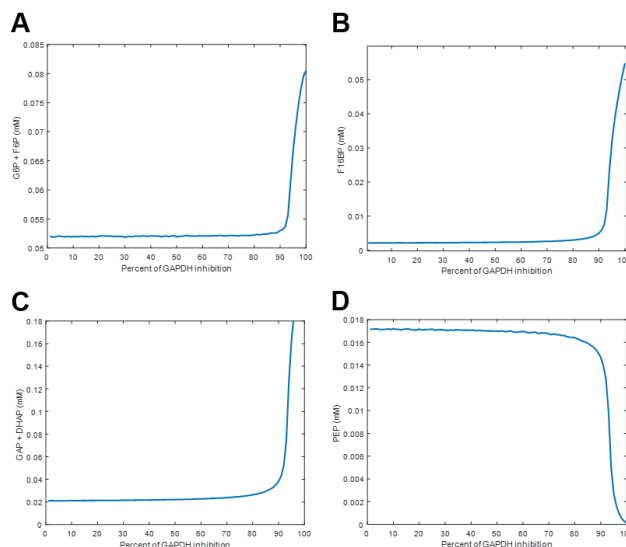


FIGURE 6. Effects of GAPDH Inhibition on metabolite concentrations in silico. A) G6P and F6P, B) FBP, C) GAP and DHAP, D) PEP. In all cases, the V_{max} of GAPDH was varied between 0 and 100 percent of its initial value to simulate varying levels of enzyme inhibition.

inhibitor concentrations, used in both A2780 ovarian and HCT116 colorectal cancer cell lines *in vitro*, were compared to *in silico* reduction of the percent GAPDH activity. Of note, we assume that at the lowest FK866 concentration (0.3 nM) used *in vitro* does not inhibit GAPDH activity.

F16BP and PEP were reported as individual metabolites in the two cancer cell lines, A2780 and HCT116. The comparison of the simulated and experimental data is presented in Fig. 5 and 6. Due to difficulties in distinguishing isobaric metabolites from one another, G6P+F6P and GAP+DHAP were grouped in the experimental data, and the sum of these metabolites are reported. The model was able to determine the individual metabolite concentrations; however, following each simulation, the two metabolites from the model data (G6P+F6P and GAP+DHAP) were added for a closer comparison to the experimental data. Moreover, the data was normalized so that each experiment (*in vitro* and *in silico*) began with the same metabolite concentration, again for a clearer comparison of the actual changes occurring as FK866 doses increased (experimental) and as GAPDH inhibition increased (model simulations).

In silico, we observed increases in all upper glycolytic metabolites with inhibition of GAPDH, supporting the metabolic data of NAMPT inhibition. The lower glycolytic metabolite, PEP, showed reduction following increased inhibition of GAPDH, in agreement with the results seen in the experimental data. Using a K/P ratio of 0.1, F26BP was the only metabolite that did not change mean values over time throughout the course of GAPDH inhibition at any level. Notably, the experimental data showed a wide range of metabolite concentrations with similar inhibitory doses, between and within both cell lines. For example, the G6P+F6P concentration in the HCT116 cell

line increased from 0.052 mM to 0.512 mM with the highest FK866 treatment, and in the two separate experiments with the A2780 cells, the metabolite concentrations increased to only 0.18 mM and 0.13 mM (Fig. 5A).

The inhibition simulations aimed to observe the overall trend of metabolite changes, intended for a qualitative comparison. There are slight variations present between the experimental data and the model data. Still the results are similar or within range of the experimental data; in the model simulation, the F16BP concentration increased from 0.0022 mM to 0.0548 mM at the highest inhibition level, while the F16BP concentration in the HCT116 cell line rose from 0.0022 mM to 0.0496 mM at the highest FK866 treatment (Fig. 5A-6A). Specific kinetics and prior knowledge of experimental data may aid in reproducing results that are more consistent in the future.

By comparing the simulation results with the experimental one, it can be noticed that in both *in vitro* and *in silico* cases, significant changes in observed metabolite concentrations appear to occur at specific drug dosage *in vitro* and 90% inhibition of GAPDH activity *in silico*. Therefore, one can speculate that roughly 90% of GAPDH inhibition is achieved with a dose of around 5 nM of FK866. Although a further increase of GAPDH inhibition *in silico* simulations causes further significant changes in the metabolite concentrations, this is only partially observed *in vitro* with higher doses of FK866.

VI. CONCLUSION

This paper presents a computational model of glycolysis constructed as a queueing network; a modeling approach widely used in modeling telecommunication packet networks. Dynamic modeling of biological systems, while exceptionally useful, poses computational challenges and in reproducing natural stochastic variation. The application of queueing theory in dynamic modeling may provide a method to overcome such challenges. The current applications of this work hold promise for advancing computational biology and biochemical research. The queueing theory represents a mainstay modeling approach of telecommunication networks with application to simulate intracellular metabolism. By viewing enzymes as “gates” and their substrates as “packets,” we have reduced the computational complexity of the simulation to the advantage of much more rapid calculation. Previously, we have shown that we can model intracellular mechanisms and do so while capturing the random variation inherent with living cells [25], [29].

Research techniques in metabolomics have evolved rapidly since their introduction. Modeling strategies must be flexible to accommodate novel information and amend the data as needed. The modularity of queues provides a suitable approach for further model extension, whether that be additional metabolic reactions, parameter refinement, or multi-scale modeling approaches. Moreover, this approach enables the ability to simulate biochemical reactions stochastically without the need to implement or solve stochastic algorithms.

As seen above, GAP and DHAP were represented experimentally as a combination of metabolic intermediates, due to their chemical similarities. Although mass spectrometry has become increasingly sensitive for detecting small molecules, isobaric metabolites are often difficult to distinguish from one another. This is the case not only for several metabolic intermediates of glycolysis but also for additional metabolic pathways. An advantage to the *in silico* mechanistic modeling of metabolic networks is the ability to represent such metabolites as individual entities investigating distinct metabolic reactions and the dynamics of each metabolite providing a more in-depth observation of the intracellular interactions.

The need for models to be informed from and then simulate data using metabolomics sources represents a significant advance in future possibilities with this approach. Due to the ability to change variables and quickly analyze the resulting metabolic effects, investigators can simulate the effects of drugs or mutations on such processes. In all, the ability to accurately and quickly simulate intracellular and intra-tissue pathways represents a considerable leap forward in the ability to understand the central biochemical underpinnings of cellular life. The advancement of technology in both experimental biology and computational systems has allowed scientific discovery and investigation on the chemical level. Elucidation of intracellular metabolite and chemical dynamics can provide valuable insight into how cells utilize cellular components to grow, respond to environmental stimuli, and ultimately support life. We believe queues have potential to simulate metabolic reactions with greater efficacy by including stochastic elements to modeled pathways as described here. An additional advantage of the queueing approach is a more natural and intuitive fit for biological pathways as they are frequently represented in the field and depicted in models of metabolism [29]. In summary, the current study presents the application of queueing theory as a beneficial modeling approach for simulating metabolic pathway dynamics and predicting the effects of pharmacological inhibition.

ACKNOWLEDGMENT

(All authors contributed equally to this work.) The authors would like to thank A. J. Neville (University of Nebraska) for thoughtful review and editing of the manuscript text. This work utilized the Holland Computing Center of the University of Nebraska, which receives support from the Nebraska Research Initiative.

REFERENCES

- [1] M. Kanehisa, “KEGG: Kyoto encyclopedia of genes and genomes,” *Nucleic Acids Res.*, vol. 28, no. 1, pp. 27–30, Jan. 2000.
- [2] S. K. Hahl and A. Kremling, “A comparison of deterministic and stochastic modeling approaches for biochemical reaction systems: On fixed points, means, and modes,” *Frontiers Genet.*, vol. 7, p. 157, Aug. 2016, doi: 10.3389/fgene.2016.00157.
- [3] T. A. Rapoport, R. Heinrich, and S. M. Rapoport, “The regulatory principles of glycolysis in erythrocytes *in vivo* and *in vitro*. A minimal comprehensive model describing steady states, quasi-steady states and time-dependent processes,” *Biochem. J.*, vol. 154, no. 2, pp. 449–469, Feb. 1976.

- [4] D. J. Wilkinson, "Stochastic modelling for quantitative description of heterogeneous biological systems," *Nature Rev. Genet.*, vol. 10, no. 2, pp. 122–133, Feb. 2009, doi: [10.1038/nrg2509](https://doi.org/10.1038/nrg2509).
- [5] E. Gelenbe, "Steady-state solution of probabilistic gene regulatory networks," *Phys. Rev. E, Stat. Phys. Plasmas Fluids Relat. Interdiscip. Top.*, vol. 76, no. 3, Sep. 2007, Art. no. 031903, doi: [10.1103/PhysRevE.76.031903](https://doi.org/10.1103/PhysRevE.76.031903).
- [6] E. Gelenbe, "Network of interacting synthetic molecules in steady state," *Proc. Roy. Soc. A, Math., Phys. Eng. Sci.*, vol. 464, no. 2096, pp. 2219–2228, Aug. 2008, doi: [10.1098/rspa.2008.0001](https://doi.org/10.1098/rspa.2008.0001).
- [7] J. Puchalka and A. M. Kierzek, "Bridging the gap between stochastic and deterministic regimes in the kinetic simulations of the biochemical reaction networks," *Biophys. J.*, vol. 86, pp. 1357–1372, Mar. 2004, doi: [10.1016/S0006-3495\(04\)74207-1](https://doi.org/10.1016/S0006-3495(04)74207-1).
- [8] E. O. Voit, "The best models of metabolism," *Wiley Interdiscipl. Rev., Syst. Biol. Med.*, vol. 9, no. 6, p. e1391, Nov. 2017, doi: [10.1002/wsbm.1391](https://doi.org/10.1002/wsbm.1391).
- [9] Y. Cao and L. Petzold, "Slow-scale tau-leaping method," *Comput. Methods Appl. Mech. Eng.*, vol. 197, nos. 43–44, pp. 3472–3479, Aug. 2008, doi: [10.1016/j.cma.2008.02.024](https://doi.org/10.1016/j.cma.2008.02.024).
- [10] D. T. Gillespie, "Exact stochastic simulation of coupled chemical reactions," *J. Phys. Chem.*, vol. 81, no. 25, pp. 2340–2361, Dec. 1977, doi: [10.1021/j100540a008](https://doi.org/10.1021/j100540a008).
- [11] H. Kim and E. Gelenbe, "Stochastic gene expression modeling with Hill function for switch-like gene responses," *IEEE/ACM Trans. Comput. Biol. Bioinf.*, vol. 9, no. 4, pp. 973–979, Jul./Aug. 2012, doi: [10.1109/TCBB.2011.153](https://doi.org/10.1109/TCBB.2011.153).
- [12] P. Ao, "Metabolic network modelling: Including stochastic effects," *Comput. Chem. Eng.*, vol. 29, nos. 11–12, pp. 2297–2303, Oct. 2005, doi: [10.1016/j.compchemeng.2005.05.007](https://doi.org/10.1016/j.compchemeng.2005.05.007).
- [13] N. van Kampen, *Stochastic Processes in Physics and Chemistry*, 3rd ed. Amsterdam, The Netherlands: Elsevier; 2007.
- [14] A. Kremling, K. Bettenbrock, and E. D. Gilles, "Analysis of global control of *Escherichia coli* carbohydrate uptake," *BMC Syst. Biol.*, vol. 1, no. 1, p. 42, Dec. 2007, doi: [10.1186/1752-0509-1-42](https://doi.org/10.1186/1752-0509-1-42).
- [15] F. López-Caamal and T. T. Marquez-Lago, "Order reduction of the chemical master equation via balanced realisation," *PLoS ONE*, vol. 9, no. 8, Aug. 2014, Art. no. e103521, doi: [10.1371/journal.pone.0103521](https://doi.org/10.1371/journal.pone.0103521).
- [16] J. J. Tyson and H. G. Othmer, "The dynamics of feedback control circuits in biochemical pathways," *Prog. Theor. Biol.*, vol. 5, pp. 1–62, Jan. 1978, doi: [10.1016/B978-0-12-543105-7.50008-7](https://doi.org/10.1016/B978-0-12-543105-7.50008-7).
- [17] J. Wu, B. Vidakovic, and E. O. Voit, "Constructing stochastic models from deterministic process equations by propensity adjustment," *BMC Syst. Biol.*, vol. 5, no. 1, p. 187, 2011, doi: [10.1186/1752-0509-5-187](https://doi.org/10.1186/1752-0509-5-187).
- [18] H. Kim and E. Gelenbe, "Reconstruction of large-scale gene regulatory networks using Bayesian model averaging," *IEEE Trans. Nanobiosci.*, vol. 11, no. 3, pp. 259–265, Sep. 2012, doi: [10.1109/TNB.2012.2214233](https://doi.org/10.1109/TNB.2012.2214233).
- [19] H. Kim, T. Park, and E. Gelenbe, "Identifying disease candidate genes via large-scale gene network analysis," *Int. J. Data Mining Bioinf.*, vol. 10, no. 2, pp. 175–188, 2014.
- [20] W. A. Massey, "Asymptotic analysis of the time dependent M/M/1 queue," *Math. Oper. Res.*, vol. 10, no. 2, pp. 305–327, May 1985, doi: [10.1287/moor.10.2.305](https://doi.org/10.1287/moor.10.2.305).
- [21] M. F. Neuts and S.-Z. Chen, "The infinite-server queue with Poisson arrivals and semi-Markovian services," *Operations Res.*, vol. 20, no. 2, pp. 425–433, Apr. 1972, doi: [10.1287/opre.20.2.425](https://doi.org/10.1287/opre.20.2.425).
- [22] D. G. Kendall, "Stochastic processes occurring in the theory of queues and their analysis by the method of the imbedded Markov chain," *Ann. Math. Statist.*, vol. 24, no. 3, pp. 338–354, Sep. 1953, doi: [10.1214/aoms/1177728975](https://doi.org/10.1214/aoms/1177728975).
- [23] A. T. Sharp, A. K. Pannier, B. J. Wysocki, and T. A. Wysocki, "A novel telecommunications-based approach to HIV modeling and simulation," *Nano Commun. Netw.*, vol. 3, no. 2, pp. 129–137, 2012, doi: [10.1016/j.nancom.2012.01.003](https://doi.org/10.1016/j.nancom.2012.01.003).
- [24] D. Guo, G. Zhang, T. A. Wysocki, B. J. Wysocki, H. A. Gelbard, X.-M. Liu, J. M. Mcmillan, and H. E. Gendelman, "Endosomal trafficking of nanoformulated antiretroviral therapy facilitates drug particle carriage and HIV clearance," *J. Virol.*, vol. 88, no. 17, pp. 9504–9513, Sep. 2014, doi: [10.1128/JVI.01557-14](https://doi.org/10.1128/JVI.01557-14).
- [25] T. M. Martin, B. J. Wysocki, T. A. Wysocki, and A. K. Pannier, "Identifying intracellular pDNA losses from a model of nonviral gene delivery," *IEEE Trans. Nanobiosci.*, vol. 14, no. 4, pp. 455–464, Jun. 2015, doi: [10.1109/TNB.2015.2392777](https://doi.org/10.1109/TNB.2015.2392777).
- [26] V. P. Evstigneev, M. G. Holyavka, S. V. Khrapaty, and M. P. Evstigneev, "Theoretical description of metabolism using queueing theory," *Bull. Math. Biol.*, vol. 76, no. 9, pp. 2238–2248, Sep. 2014, doi: [10.1007/s11538-014-0004-1](https://doi.org/10.1007/s11538-014-0004-1).
- [27] P. Hochendoner, C. Ogle, and W. H. Mather, "A queueing approach to multi-site enzyme kinetics," *Interface Focus*, vol. 4, no. 3, Jun. 2014, Art. no. 20130077, doi: [10.1098/rsfs.2013.0077](https://doi.org/10.1098/rsfs.2013.0077).
- [28] A. Arazi, E. Ben-Jacob, and U. Yechiali, "Bridging genetic networks and queueing theory," *Phys. A, Stat. Mech. Appl.*, vol. 332, pp. 585–616, Feb. 2004.
- [29] G. Cooper and R. Hausman, *The Cell: A Molecular Approach*, vol. 1, 6th ed. Sunderland, MD, USA: Sinauer Associates, 2013.
- [30] T. L. Werth, M. Holzhauser, and S. O. Krumke, "Atomic routing in a deterministic queueing model," *Operations Res. Perspect.*, vol. 1, no. 1, pp. 18–41, Mar. 2014, doi: [10.1016/j.orp.2014.05.001](https://doi.org/10.1016/j.orp.2014.05.001).
- [31] A. J. Jezewski, J. J. Larson, B. Wysocki, P. H. Davis, and T. Wysocki, "A novel method for simulating insulin mediated GLUT4 translocation," *Biotechnol. Bioengineering*, vol. 111, no. 12, pp. 2454–2465, Dec. 2014, doi: [10.1002/bit.25310](https://doi.org/10.1002/bit.25310).
- [32] C. V. Rao, D. M. Wolf, and A. P. Arkin, "Control, exploitation and tolerance of intracellular noise," *Nature*, vol. 420, no. 6912, pp. 231–237, Nov. 2002, doi: [10.1038/nature01258](https://doi.org/10.1038/nature01258).
- [33] J. M. Berg, J. L. Tymoczko, L. Stryer, and L. Stryer, *Biochemistry*, 5th ed. New York, NY, USA: Freeman, 2002.
- [34] B. C. Mulukutla, A. Yongky, P. Daoutidis, and W.-S. Hu, "Bistability in glycolysis pathway as a physiological switch in energy metabolism," *PLoS ONE*, vol. 9, no. 6, Jun. 2014, Art. no. e98756, doi: [10.1371/journal.pone.0098756](https://doi.org/10.1371/journal.pone.0098756).
- [35] P. J. Mulquiney and P. W. Kuchel, "Model of 2,3-bisphosphoglycerate metabolism in the human erythrocyte based on detailed enzyme kinetic equations I: Equations and parameter refinement," *Biochem. J.*, vol. 342, no. 3, pp. 581–596, Sep. 1999.
- [36] A. K. Groen, H. J. Sips, R. C. Vervoorn, and J. M. Tager, "Intracellular compartmentation and control of alanine metabolism in rat liver parenchymal cells," *Eur. J. Biochem.*, vol. 122, no. 1, pp. 87–93, Feb. 1982.
- [37] M. König, S. Bulik, and H.-G. Holzhütter, "Quantifying the contribution of the liver to glucose homeostasis: A detailed kinetic model of human hepatic glucose metabolism," *PLoS Comput. Biol.*, vol. 8, no. 6, Jun. 2012, Art. no. e1002577, doi: [10.1371/journal.pcbi.1002577](https://doi.org/10.1371/journal.pcbi.1002577).
- [38] J. R. L. Webb and G. Infante, "Positive solutions of nonlocal boundary value problems: A unified approach," *J. London Math. Soc.*, vol. 74, no. 3, pp. 673–693, Dec. 2006.
- [39] L. H. Erbe and H. Wang, "On the existence of positive solutions of ordinary differential equations," *Proc. Amer. Math. Soc.*, vol. 120, no. 3, p. 743, Mar. 1994, doi: [10.1090/S0002-9939-1994-1204373-9](https://doi.org/10.1090/S0002-9939-1994-1204373-9).
- [40] S. Schuster, D. A. Fell, and T. Dandekar, "A general definition of metabolic pathways useful for systematic organization and analysis of complex metabolic networks," *Nature Biotechnol.*, vol. 18, no. 3, pp. 326–332, Mar. 2000, doi: [10.1038/73786](https://doi.org/10.1038/73786).
- [41] E. J. Clement, B. J. Wysocki, P. H. Davis, and T. A. Wysocki, "On a queueing theory method to simulate in-silico metabolic networks," *Current Metabolomics*, vol. 6, no. 1, Jan. 2018, doi: [10.2174/2213235X05666161221160658](https://doi.org/10.2174/2213235X05666161221160658).
- [42] B. J. Wysocki, T. M. Martin, T. A. Wysocki, and A. K. Pannier, "Simulation supported estimation of end-to-end transmission parameters in non-viral gene delivery," in *Proc. IEEE Int. Conf. Commun. (ICC)*, Jun. 2014, pp. 4179–4183, doi: [10.1109/ICC.2014.6883976](https://doi.org/10.1109/ICC.2014.6883976).
- [43] Y. Levy, "Introduction to queueing theory, 2nd ed., by Robert B. Cooper, Elsevier North Holland, New York, 1981, 347 pp. Price: \$ 24.95," *Networks*, vol. 13, no. 1, pp. 155–156, 1983, doi: [10.1002/net.3230130112](https://doi.org/10.1002/net.3230130112).
- [44] D. Degenring, M. Röhl, and A. M. Uhrmacher, "Discrete event, multi-level simulation of metabolite channeling," *Biosystems*, vol. 75, nos. 1–3, pp. 29–41, Jul. 2004, doi: [10.1016/j.biosystems.2004.03.008](https://doi.org/10.1016/j.biosystems.2004.03.008).
- [45] M. Hasmann and I. Schemainda, "FK866, a highly specific noncompetitive inhibitor of nicotinamide phosphoribosyltransferase, represents a novel mechanism for induction of tumor cell apoptosis," *Cancer Res.*, vol. 63, pp. 7436–7442, Nov. 2003.
- [46] Z. Moore, G. Chakrabarti, X. Luo, A. Ali, Z. Hu, F. J. Fattah, R. Vemireddy, R. J. DeBerardinis, R. A. Brekken, and D. A. Boothman, "NAMPT inhibition sensitizes pancreatic adenocarcinoma cells to tumor-selective, PAR-independent metabolic catastrophe and cell death induced by β -Lapachone," *Cell Death Disease*, vol. 6, no. 1, Jan. 2015, Art. no. e1599, doi: [10.1038/cddis.2014.564](https://doi.org/10.1038/cddis.2014.564).

- [47] B. Tan, D. A. Young, Z.-H. Lu, T. Wang, T. I. Meier, R. L. Shepard, K. Roth, Y. Zhai, K. Huss, M.-S. Kuo, J. Gillig, S. Parthasarathy, T. P. Burkholder, M. C. Smith, S. Geeganage, and G. Zhao, "Pharmacological inhibition of nicotinamide phosphoribosyltransferase (NAMPT), an enzyme essential for NAD⁺-biosynthesis, in human cancer cells: Metabolic basis and potential clinical implications," *J. Biol. Chem.*, vol. 288, no. 5, pp. 3500–3511, Feb. 2013, doi: [10.1074/jbc.M112.394510](https://doi.org/10.1074/jbc.M112.394510).
- [48] V. Tolstikov, A. Nikolayev, S. Dong, G. Zhao, and M.-S. Kuo, "Metabolomics analysis of metabolic effects of nicotinamide phosphoribosyltransferase (NAMPT) inhibition on human cancer cells," *PLoS ONE*, vol. 9, no. 12, Dec. 2014, Art. no. e114019, doi: [10.1371/journal.pone.0114019](https://doi.org/10.1371/journal.pone.0114019).



EMALIE J. CLEMENT received the B.S. and M.S. degrees in biology from the University of Nebraska at Omaha. She is currently pursuing the Ph.D. degree in cancer biology with the University of Nebraska Medical Center.



THOMAS T. SCHULZE received the B.S. degree in kinesiology from Iowa State University and the M.S. degree in biology from the University of Nebraska. He is currently pursuing the Ph.D. degree in immunology, pathology, and infectious disease from the University of Nebraska Medical Center. He is also an Applied Defense and Education Pipeline Training (ADEPT) Fellow with the University of Nebraska Medical Center.



GHADA A. SOLIMAN received the medical degree from Cairo University, Egypt, and the Ph.D. degree in nutritional sciences from The University of Arizona, Tucson, AZ, USA, with a major in nutritional biochemistry and minor in immunology and microbiology. In addition, she completed her Dietetic Internship at the University of Michigan, Ann Arbor, MI, USA, and earned her Postdoctoral Fellowships with the Baylor College of Medicine, Houston, TX, USA, at the Children's Nutrition Research Center, Atherosclerosis, Lipoprotein Research, and Vascular Biology, as well as translational research. She is currently an Associate Professor of nutrition with the Department of Environmental, Occupational, and Geospatial Health Sciences, The City University of New York, Graduate School of Public Health and Health Policy. Her transdisciplinary research portfolio spans cardiometabolic and cancer research, chronic disease prevention, population health, school nutrition, systems biology, and laboratory-based nutrient metabolism.



BEATA JOANNA WYSOCKI graduated from the Warsaw University of Technology, Warsaw, Poland. She received the M.Eng. degree in electrical engineering, in 1991, and the Ph.D. degree from the Australian Telecommunications Research Institute, Curtin University of Technology. From October 1999 until 2008, she was with the Telecommunications and Information Technology Research Institute, University Wollongong, as a Research Fellow. In March 2000, she was awarded her Ph.D. thesis in Signal Formats for Code Division Multiple Access Wireless Networks. She is currently with the Department of Biology, University of Nebraska at Omaha, as a Visiting Scientist. Her research interests include: modeling biological processes at nanoscale, space-time signal processing, and spreading sequence design.



PAUL H. DAVIS received the B.S. degree in microbiology from Brigham Young University, Provo, UT, USA, in 2001, and the Ph.D. degree in molecular microbiology from Washington University in St. Louis, St. Louis, MO, USA, in 2006. He is currently an Associate Professor of biology with the University of Nebraska at Omaha, where he specializes in molecular biology, bioinformatics, and infectious diseases.



TADEUSZ A. WYSOCKI (Senior Member, IEEE) received the M.Eng.Sc. degree (Hons.) in telecommunications from the Academy of Technology and Agriculture, Bydgoszcz, Poland, in 1981, the Ph.D. degree (*summa cum laude*) from the Warsaw University of Technology, in 1984, and the D.Sc. degree (*Habilitation*) in telecommunications engineering from the Warsaw University of Technology, in 1990. In January 1992, he moved to Australia, where he worked at different Universities and research centers. In 1993, he was with the University of Hagen, Germany, within the framework of Alexander von Humboldt Research Fellowship. In December 1998, he joined the University of Wollongong, as an Associate Professor. In 2003, he has established the Wireless Research Group, which he directed until the end of 2007, when he moved to take up a Professorship of Computer and Electronics Engineering at the Peter Kiewit Institute, University of Nebraska–Lincoln. In 2013, a life title of Professor was conferred on him by the President of Poland. He is currently a Professorship with the Department of Electrical and Computer Engineering, University of Nebraska–Lincoln, and with the UTP University, Bydgoszcz, Poland. He is the author or coauthor of seven books, more than 250 research publications, and nine patents. His areas of research interest include molecular communications, modeling of biological processes at nano-scale, and signal processing for communication systems.

...