



2015 Hawaiian Digital Resource Series

Kahuku Public and School Library

Koa Luke, Archivist/Cataloger - 'Ulu 'Ulu Henry Ku'ualoha Giugni Moving Image Archive of Hawai'i at UH West O'ahu
Tamara Martinez, Public Librarian - Kahuku Public and School Library

Overview

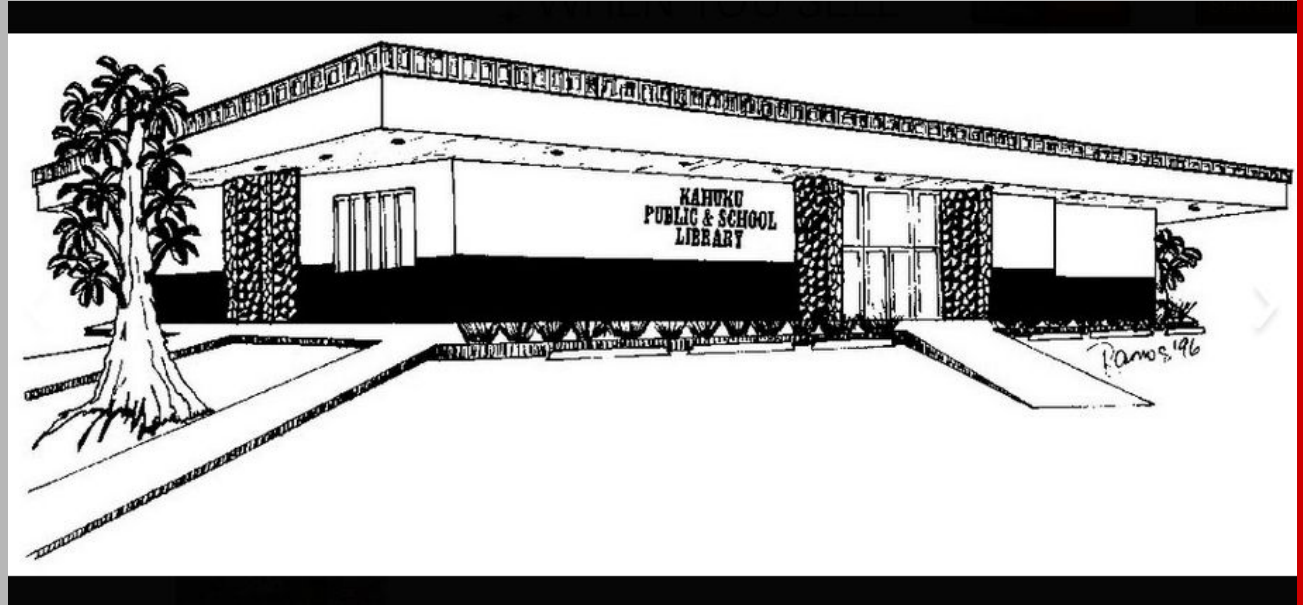
Landscape

Catalyst

Details of Series

Immediate Impact

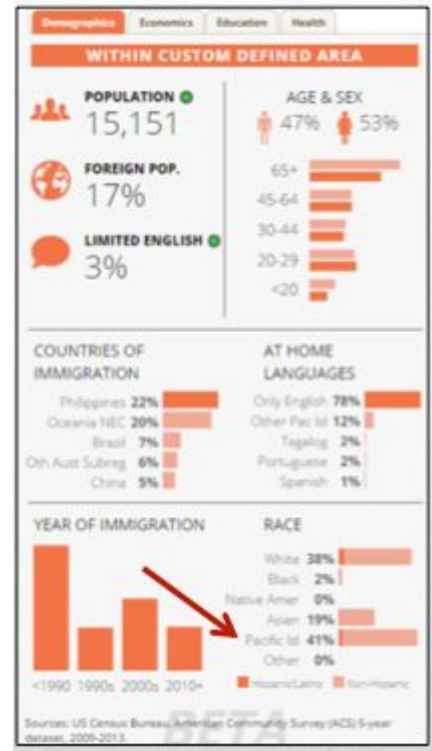
Lasting Impact



Snapshot of Ko'olauloa



Kahuku Public and School Library serves residents of Ko'olauloa -
 Sunset Beach,
 Kahuku,
 La'ie,
 Hau'ula,
 Punalu'u,
 Kahana, and
 Ka'a'awa.



Need / Why

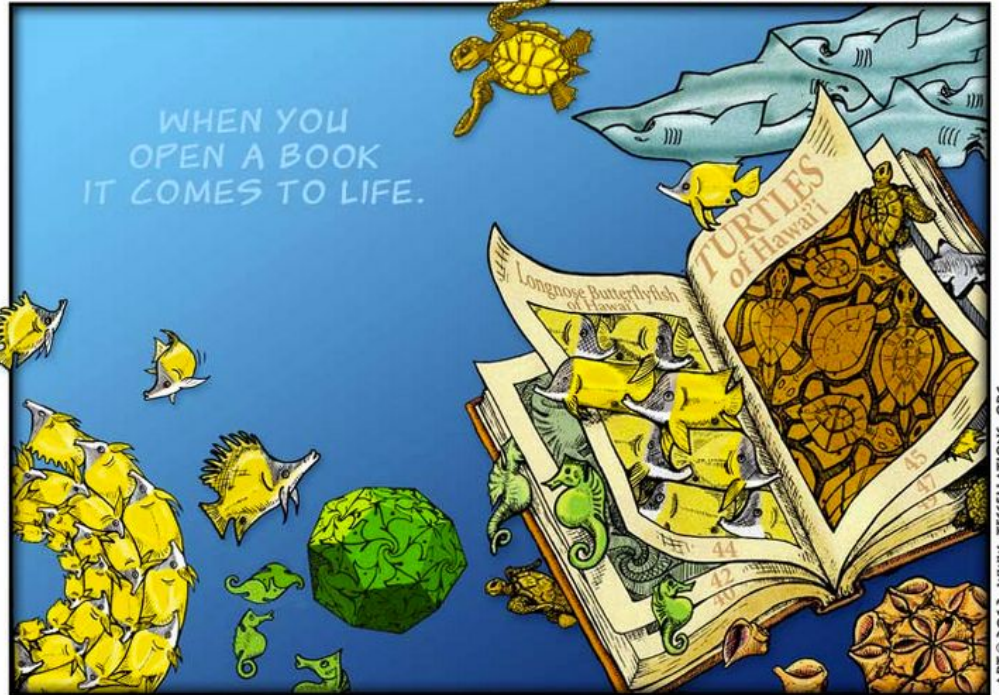
Visitor *talkstory*

The search

Not Enough Name Recognition

Varying Technology Skills

KAHUKU PUBLIC SCHOOL LIBRARY



56-490 HAMEHAMEHA HIGHWAY KAHUKU, HI 96731 TEL: (808) 293-8935

ART © 2013 WWW.TESSELLATIONS.ORG

What

Workshop(s)?

Information and
Personal Connections

How

Expert Guest Speakers

Multiple Organizations

Specific Databases

How

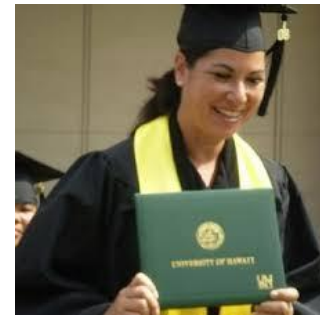
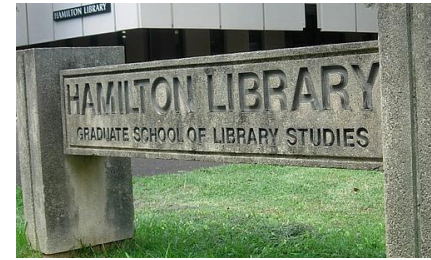
LIS Network

Staff and Friends of the
Library Kahuku

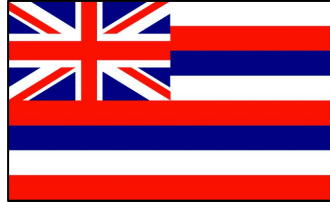
Kahuku Film Club

Hawaiian Civic Club

Food

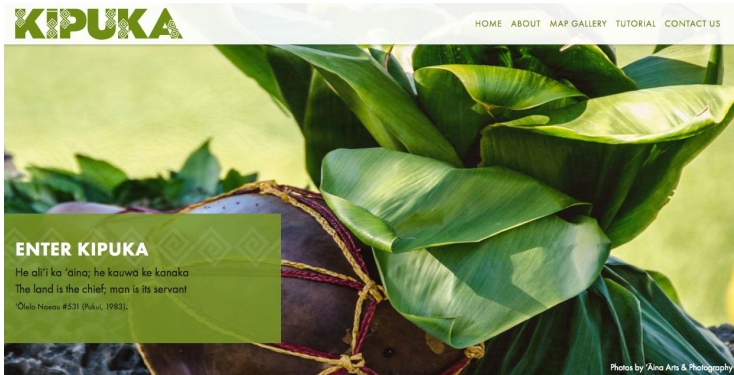


How



Hands-On Participation
Live Demonstrations
Hawaiian Primary Resources

Who



KIPUKA HOME ABOUT MAP GALLERY TUTORIAL CONTACT US

ENTER KIPUKA
He ali'i ka 'āina; he kauwa ke kanaka
The land is the chief, man is its servant
Ōiako Nōmā #531 (Pukū, 1992).

Photos by Aino Aro & Photography



PAPAKILO
DATABASE
Kūkulu ka 'ike i ka 'ōpua

OHA
Empowering Hawaiians.
Strengthening Hawaii

Main About the Database Using the Database Database Partners Search by Collection Search by Location Advanced Search Forum

Enter key word search here **SEARCH PAPA KILLO**

SITE FUNCTIONS

- View my favorites
- Login
- Create an account

MORE INFORMATION

- How to use the Papakilo Database
- Terms of use
- Compatibility information on browsers and operating systems

OTHER OHA ONLINE RESOURCES

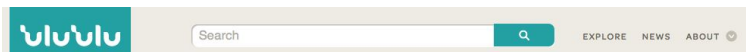
- Kamakako'i
- Kipuka Database
- Native Hawaiian Databook

Special Searches

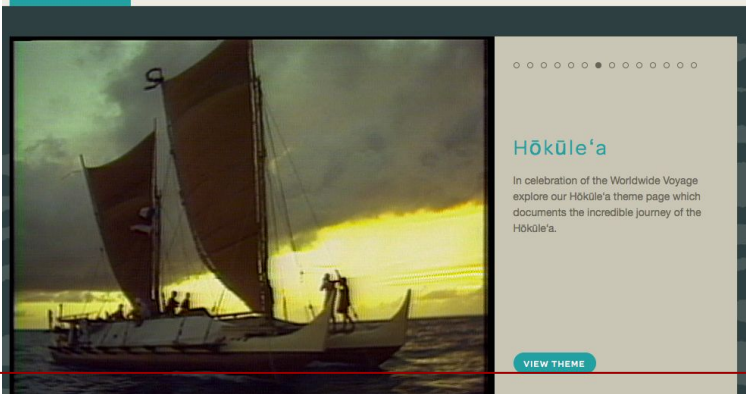
- Search By Location**
- Search By Genealogy**
- Search Mahele Records**
- Search Newspapers**

LATEST NEWS
July 17, 2015 - In partnership with Awaiaulu, Ulukau and DL Consulting, the OHA has completed Phase II of our newspaper digitization project. The Papakilo Database now has over 58,600 digitized pages from 48 newspapers, resulting in almost 380,000 articles from 1834 - 1937. Phase III will focus on integrating with Ulukau to represent a consistent and comprehensive newspaper collection, available through both the Ulukau and the Papakilo Database websites.

April 24, 2015 - In partnership with the Hawai'i State Archives, the Land Card Catalogue Index Collection at the State Archives is now available for digital search on



ULUKAU Search EXPLORE NEWS ABOUT



Hōkūle'a

In celebration of the Worldwide Voyage explore our Hōkūle'a theme page which documents the incredible journey of the Hōkūle'a.

VIEW THEME



ULUKAU English Text

Huli Nā Puke Wehewehe Nā Puke Nā Nūpepa Mo'oku'auhau Inoa 'āina Baibala Hemolele Kekahi...

E a'o i ka 'Ōlelo Hawai'i Kōkua

Huli Huli Nowelo

ā ē ī ō ū ʻ

E like ho'i me ka loa'a honua mai o ka "ike akua" i ke kanaka e roho ulukau 'a ana, pēla ho'i ka loa'a o ka 'ike kūhohonu i ke kanaka nāna e ho'oikaika ana i ka heluhelu i nā 'ōlelo o kēia papahana waihana puke uila.

No Ulukau Nā Hoa Kuleana Kope Pilikino Ho'oka'a'ike Papa Kuhukui

Where / When

- 1 Idea
- 2 Months
- 3 Organizations
- 4 Digital Resources
- 5 Guest Speakers
- 6 Sessions

Hawaiian Digital Resources Series at Kahuku Public and School Library

You are invited to join us at the Kahuku Public and School Library for our Hawaiian Digital Resources Series where guest presenters from 'Ulu 'Ulu, Office of Hawaiian Affairs, and Alu Like will share more about their free, online resources.

****Bring your laptop to follow along****

 The Henry Ku Lahala Guggis Moving Image Archive of Hawaii http://uluulu.hawaii.edu/	 http://www.oha.org/  http://kipukadatabase.com/  http://papakilodatabase.com/main/main.php	 http://www.alulike.org/  http://alukau.org/  http://wehewehe.org/
HISTORICAL FILMS OF HAWAII	LAND MAPPING WITH HISTORICAL DATA	HAWAIIAN DICTIONARY, NEWSPAPER, PHOTOS, GENEALOGY INDEX, MORE
Tuesday, February 24 th 3:00pm and 6:00pm (repeat)	Tuesday, March 3 rd 3:00pm and 6:00pm (repeat)	Tuesday, March 24 th 3:00pm and 6:00pm (repeat)

For more information, please call
Kahuku Public and School Library at 808-293-8935

Impact

Our visit with [Kahuku High & Intermediate...](#)

We held two information sessions at the library and were happy to see that both were well attended by students, kupuna, and other Kahuku community members.

We had fun watching the reactions of the crowd as they enjoyed various clips highlighting the different types of content we care for at the archive.

Their reactions were mostly just amazement at seeing the moving images but we could also hear them commenting to each other every now and then as they recalled the familiar faces and places shown in the videos.

Those in attendance helped it to be lively sessions! They had lots of... <http://wp.me/pybz0-sd>



“I never knew.”

“Oh, my mother-in-law is going to love this.”

“How can we donate [films and video] to your organization?”



“So, our students can add to this?”



Land Award - Kahuku

Location	
Mokupuni:	O'ahu
Moku:	Ko'olauloa
Ahupua'a:	Waiale'e
'Ili:	None Found
Description	
Award Type:	Land Commission Award
Award Year:	1853
Helu:	2831:1
Claimant:	Kahuku
Grant #:	1516
Notes:	This land somehow passed to the Terr of Hawaii "Liber 478 pg. 124-5, Aug. 12 1917."
Source	
Links to Other Records	
Foreign Testimony	Land Commission Award
Royal Patent Grant	Survey Boundaries
Community Input	
View Comments	

Location	
Mokupuni:	O'ahu
Moku:	Ko'olauloa
Ahupua'a:	Waiale'e
'Ili:	None Found
Description	
Award Type:	Land Commission Award
Award Year:	1853
Helu:	2831:1
Claimant:	Kahuku
Grant #:	1516
Notes:	This land somehow passed
Source	
Links to Other Records	
Foreign Testimony	
Royal Patent Grant	
Community Input	
View Comments	



Impact



“My students already use Ulukau and Wehewehe...”



ULUKAU: THE HAWAIIAN ELECTRONIC LIBRARY

KA HO'OILINA: PUKE PAI 'ŌLELO HAWAI'I

THE LEGACY: JOURNAL OF HAWAIIAN LANGUAGE SOURCES

- ▶ Kikokikona Hawai'i
- ▶ Help
- ▶ Extras...

[Search ▶](#) | [Word](#) | [Date](#) | [Browse by Journal](#) | [Browse by Section](#) |

[About the Journal](#)

[Search](#)

[Hardcopy Journal](#)

[Subscriptions & Contacts](#)

1. HAULE KA UA I KAHOAEA, IHEA OE?

He naauao maoli no ke kiina olelo a na makua o kakou, ma keia mau mamalaolelo e kau ae la maluna. Heaha la na manao huna o keia mau olelo i puka ae ai o keia ninau?

2. Ma ka noho ana o ko Niihau mau kini, a oiai hoi, he uala ka ai makua o ia aina; e noho ana kela ame keia ohana, me ka makaala ana i na mahinaai ame na lau uala e kanu aku ai, no na la kupono i ke kanu lau. He mea maopopo loa i ko kakou noho ana o Hawaii nei; e noho paa ana kekahi ohana, a e kaahela makaikai a hele ike makamaka a ohana no hoi kekahi ma kekahi moku aku o ka paeaina. Aia i keia kaahela ana i ka wa kokoke o ke kanu uala, ikeia aku la e ka poe mahiai na kahoaka ma ka lani, e hoike mai ana, he haule ua a hiki iho; nolaila, hoomakaukau ae la na mahiai i ka lakou mau mahinaai me ka waele ana no ke kanu aku i na lau uala mamua o ka haule ana iho o ka ua.

3. Pau na lau i ke kanu, haule ka ua, o ka ma-u iho la no ia o ka lepo; o ka ma-u no ia a ulu na lau uala.

4. I ka hele ana o ka poe hele makaikai a hoi i ka aina, ahiki mai la ka wa o ke oo ana, huhuki mai la na mahiai i na lau, a paeli no hoi i na wahi pu'e uala, no ke kalua aku i ai na ka ohana. I ke kalua ana a mo'a a huai, moe aku la ka uwahi aala o ka uala, a ka mea kahuimu, a loa ka poe kaahela i hoi mai; ala ae la ua poe kaahela la, a hookolo aku la ma kahi o ke ala uala i hiki mai ai.

- [OPTIONS](#)
[\[click here for details\]](#)
- [Introduction](#)
- Version
[1](#) | [2](#) | [3](#)
- Audio
[Streaming](#)
[Download](#)
- [Text Version](#)
- Original
Image
[Midsize](#) | [Full](#)
- [PDF File](#)
- Viewing
[Detach Text](#)
- Highlight
[On](#) | [Off](#)

“The thing I liked most about it was that the audience were all community people, so the way they engaged the tools were dynamic which made for good discussion. I really loved how the *presenters tailored their presentations using examples/searches from Kahuku to make it relevant to the audience.*”

“Those were seriously awesome events--closing the gap between these amazing tools and the majority of folks whose histories actually informed these tools, but would otherwise not have access to them. That's what was the most exciting part about the presentations to me--the possibility of having everyday people bring meaning, breathe life into these databases and archives.”

“Thank you, to both of you for **modeling to the rest of us how to democratize these resources!**”

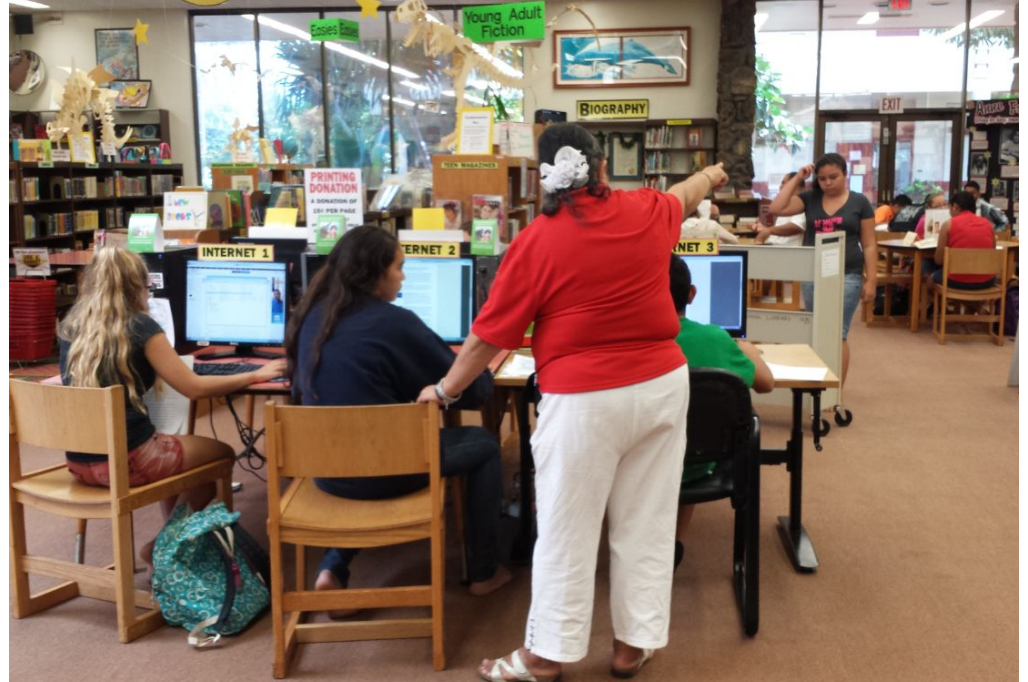
Takeaways

Outcomes

Location/Times

More promotion

Lasting Impact



Lasting Impact



The screenshot shows the website's header with navigation links: Home, About HSPLS, Catalog, Services, Location, and Serials Holdings Lists. The main content area is titled "Electronic Resources" and includes a paragraph about HSPLS's licensing agreements. Below this is a "Subjects" section with a grid of filters (A-Z, All, Elementary, Middle, High, Teachers) and a list of subject categories. A "Featured Services" sidebar on the right includes a "RESERVE A COMPUTER" button and another "E-Learning @ Your Library" logo.

Ask A Librarian | My Account |

Mobile Access: Select Option

Home About HSPLS Catalog Services Location Serials Holdings Lists

Electronic Resources

HSPLS pays for and makes these online resources available to HSPLS customers through licensing agreements with the database providers. Funding for these electronic services is provided by the Federal Library Services and Technology Act (LSTA), which is administered by the Institute of Museum and Library Services (IMLS). You will need your Hawaii State Public Library System (HSPLS) [library card number](#) and PIN (personal identification number) in order to access these subscription databases from outside a HSPLS library.

Featured Services

RESERVE A COMPUTER

E-Learning @ Your Library

Subjects

A-Z All Elementary Middle High Teachers

[Academic](#) | [Agriculture](#) | [Anthropology](#) | [Arts and Humanities](#) | [Automobiles](#) | [Biography](#) | [Books](#) | [Business](#) | [Computers](#) | [Education](#) | [Encyclopedia](#) | [Environment](#) | [Examinations & Testing](#) | [Genealogy](#) | [General](#) | [Government](#) | [Grants](#) | [Health](#) | [History](#) | [Language](#) | [Law](#) | [Librarianship](#) | [Literary Criticism](#) | [Literature](#) | [Military](#) | [Multicultural Studies](#) | [Nation & World](#) | [Philosophy](#) | [Psychology / Psychiatry](#) | [Religion](#) | [Science](#) | [Social Science](#) | [Student Research](#) | [Vocational Guidance](#)