



Chemical-neuroanatomical organization of peripheral sensory-efferent systems in the pond snail (*Lymnaea stagnalis*)

Réka Horváth¹ · Izabella Battonyai¹ · Gábor Maász¹ · János Schmidt² · Zsuzsanna N. Fekete¹ · Károly Elekes¹

Received: 26 May 2020 / Accepted: 8 September 2020 / Published online: 20 September 2020
© The Author(s) 2020

Abstract

Perception and processing of chemical cues are crucial for aquatic gastropods, for proper elaboration of adaptive behavior. The pond snail, *Lymnaea stagnalis*, is a model species of invertebrate neurobiology, in which peripheral sensory neurons with different morphology and transmitter content have partly been described, but we have little knowledge regarding their functional morphological organization, including their possible peripheral intercellular connections and networks. Therefore the aim of our study was to characterize the sensory system of the tentacles and the lip, as primary sensory regions, and the anterior foot of *Lymnaea* with special attention to the transmitter content of the sensory neurons, and their relationship to extrinsic elements of the central nervous system. Numerous bipolar sensory cells were demonstrated in the epithelial layer of the peripheral organs, displaying immunoreactivity to antibodies raised against tyrosine hydroxylase, histamine, glutamate and two molluscan type oligopeptides, FMRFamide and Mytilus inhibitory peptide. A subepithelial plexus was formed by extrinsic serotonin and FMRFamide immunoreactive fibers, whereas in deeper regions axon processes of different origin with various immunoreactivities formed networks, too. HPLC–MS assay confirmed the presence of the low molecular weight signal molecules in the three examined areas. Following double-labeling immunohistochemistry, close arrangements were observed, formed by sensory neurons and extrinsic serotonergic (and FMRFamidergic) fibers at axo-dendritic, axo-somatic and axo-axonic levels. Our results suggest the involvement of a much wider repertoire of signal molecules in peripheral sensory processes of *Lymnaea*, which can locally be modified by central input, hence influencing directly the responses to environmental cues.

Keywords Sensory neurons · Periphery · Monoamines · Neuropeptides · Extrinsic modulation · *Lymnaea stagnalis*

Introduction

The capturing and subsequent interpretation of external signals from the surroundings are pivotal for optimal adaptation in the animal kingdom, including invertebrates. After arthropods, mollusks are the second most important phylum among invertebrates, represented by about hundred thousand different species, in which the largest class, gastropods involve a number of species, such as the

opisthobranchs *Aplysia californica* and *Tritonia diomedea* or the pulmonates *Lymnaea stagnalis*, *Helix pomatia* and *Limax maximus*, which are well-known model animals for neuroscience research (Chase 2002). These species possess well-developed sensory organs, primarily the tentacles (rhynchophores) and lip, although other anatomical regions such as the mantle edge and the body surface are also supplied with sensory elements (Chase 2001). These organs are set for chemo- and/or mechanosensation. In addition, aquatic pulmonate species possess a specific chemosensory organ, the osphradium, whereas the statocysts serve in all gastropod species for gravireception. Because of their poor visual perception, the role of chemoreception in collecting even distant information from the surrounding is essential. Most of the sensory elements responsible for catching chemical cues, and so playing an initiative role in elaborating different behaviors like food-finding, foraging, mating, escape or avoidance, are concentrated in the tentacles and lip.

✉ Réka Horváth
horvath.reka@okologia.mta.hu

¹ Department of Experimental Zoology, Centre for Ecological Research, Balaton Limnological Institute, 8237 Tihany, Hungary

² Department of Analytical Biochemistry, Institute of Biochemistry and Medical Chemistry, University of Pécs, 7624 Pécs, Hungary

There are a number of reports dealing with peripheral information processing by sensory neurons located in the gastropod central nervous system (CNS) (Kandel 1976, 1979; Chase 2001). Furthermore, early and recent neuro-anatomical studies including ultrastructural investigations have described the presence, distribution, morphology and organization of sensory cells in the periphery of several gastropod species. In *Helix*, bipolar sensory neurons were visualized in the epithelial and subepithelial layers of the anterior tentacles, lips and foot (Hernádi and Benedeczy 1978, 1994; Hernádi 1981, 1982). Zaitseva and Bocharova (1981) classified six different types of sensory neurons in the head regions of *Helix* and *Viviparus*, based on their location, anatomy, presence and number of cilia and microvilli, and their central projections. In the tentacles of *Limax*, Ito et al. (2000) identified three sensory neuron subtypes, namely the round, the spindle-shaped and the small ones. In terrestrial snails (e. g. *Helix*, *Achatina*) and *Limax*, sensory cells were shown to project mainly to the tentacular ganglion, then entered to the procerebrum, meanwhile a small part of them reached directly the CNS (Chase 2001, 2002; Chase and Tolloczko 1993; Ierusalimsky and Balaban 2010). Nevertheless, the organization of the rhinophores in *Aplysia* was found to be slightly different. The bipolar sensory cells projected first to olfactory glomeruli located beneath the sensory epithelium, which were connected thereafter to the rhinophore ganglion (Wertz et al. 2006).

The peripheral nervous system of the pond snail *Lymnaea stagnalis* has also been studied in details, regarding the types of sensory neurons, the cellular organization of the sensory system and the possible role of the peripheral structures in forwarding information to the CNS. Several types of sensory dendrites were distinguished, depending on the presence or lack, as well as the number and position of cilia (Zylstra 1972a, b; Roubos and Van der Wal Divendal 1982; Dorsett 1986; Chase 2002). Recently, four different types of ciliated bipolar sensory neurons were distinguished by Wyeth and Croll (2011) in the cephalic sensory region containing the lip and tentacles, based on the position and form of the sensory dendrites, the clustering of the cell bodies, and presence or lack of the sensory axon. By applying histo- and immunohistochemical methods, dopamine (DA/tyrosine hydroxylase [TH]), histamine (HA), glutamate (Glu), nitric oxide (nitrogen monoxide synthase ([NOS]/dihydropyridine adenine dinucleotide phosphate diaphorase [NADPHd]) and the oligopeptide FMRFa (Fa) were demonstrated in the sensory neurons of different peripheral regions of gastropods, including the cephalic sensory organs (tentacles, lip), the foot and the mantle (TH/DA: *Lymnaea*, Voronezhskaya et al. 1999; Croll et al. 1999; Wyeth and Croll 2011; *Aplysia*, Croll 2001; *Phestilla*, Croll et al. 2003; *Pleurobranchia*, Faller et al. 2008; Brown et al. 2018; *Biomphalaria*, Vallejo et al. 2014; HA: *Lymnaea*, *Helix*, Hegedűs et al. 2004; *Lymnaea*, Wyeth and Croll 2011; *Biomphalaria*,

Habib et al. 2015; Glu: *Lymnaea*, Hatakeyama et al. 2007; NOS/NADPHd: *Lymnaea*, Elphick et al. 1995; Serfőző et al. 1998; Wyeth and Croll 2011; *Aplysia*, Moroz 2006; Fa: *Limax*, Suzuki et al. 1997; *Aplysia*, Wollesen et al. 2007). The possible transmitter content was also correlated with the morphology of the sensory cells in the cephalic sensory organs of *Lymnaea* (Wyeth and Croll 2011).

Although the sensory cell types and a good part of their neurotransmitter content have been described in the cephalic region of gastropods, including *Lymnaea* (see above), the spatial organization and the functional–anatomical relationship between neurochemically different peripheral sensory structures and efferent elements originating from the CNS has not yet been investigated. Therefore, the aim of our present study was, first, to perform a detailed chemical-neuro-anatomical analysis following both single and double-labeling immunohistochemistry to widen our knowledge on the presence of signaling molecules in sensory cells of the pond snail, *Lymnaea stagnalis*. In the course of this, aminergic (DA, HA), amino acidergic (Glu) and peptidergic (Fa, MIP) afferent components were visualized in the sensory epithelium. Next, the possible functional anatomical relationship of the sensory elements to other neuronal components of extrinsic (central) origin was analyzed, focusing on the serotonin (5-HT) immunoreactive (5-HT-IR) elements. 5-HT is perhaps the most studied signaling molecule in the gastropod nervous system (Walker 1986; Walker et al. 2009; Gillette 2006). 5-HT containing processes have been regarded as a major extrinsic component of central origin in the gastropod periphery, which were identified in both somatic and visceral regions. As to the innervation of the cephalic area, the 5-HTergic cerebral giant neuron was shown to play a key role (Pentreath and Cottrell 1974; Gillette 1991; Chase 2002). The role of 5-HTergic pedal neurons was also demonstrated in the innervation of the foot, including the ciliary movement of *Lymnaea* (Syed et al. 1988; Syed and Winlow 1989; McKenzie et al. 1998). The presence of 5-HT in peripheral nerve cells was only demonstrated in transient apical (sensory) cells of gastropod embryos (Marois and Croll 1992; Kempf et al. 1997; Marois and Carew 1997; Page and Parries 2000; Voronezhskaya et al. 2004). Our investigations were also coupled with HPLC–MS assay, to quantify and support the presence of small molecular weight neurotransmitters (5-HT, DA, HA, Glu) in the cephalic organs.

Materials and methods

Animals

Adult specimens of the pond snail, *Lymnaea stagnalis* were used for our experiments. The animals were collected from

the Kis-Balaton reservoir and other inlets, then maintained in aquaria supplied with oxygenated Balaton-water under 16–8 h light–dark cycle at room temperature (~16–20 °C) and fed on lettuce ad libitum.

All procedures were performed according to the protocols approved by the Scientific Committee of Animal Experimentation of the Balaton Limnological Institute (VE-I-001/0189010/2013).

Light-microscopic immunohistochemistry

Fixation

The tentacles, the lip and the edge of anterior foot region were dissected from altogether 50 adult specimens. Tissues used for anti-5-HT, -HA, -Glu, -TH, -MIP and -Fa immunohistochemistry (IHC), respectively, were fixed in 4% paraformaldehyde (PFA, Reanal, Budapest) dissolved in 0.1 M phosphate buffer (PB) overnight at 4 °C. For anti-HA IHC the peripheral tissues were fixed first in a mixture of 4% 1-ethyl-3(3-dimethylaminopropyl)-carbodiimide (EDAC, Sigma) and 0.4% *N*-hydroxysuccinimide (NHS, Sigma) for 4 h at 4 °C, followed by a fixation in 2% PFA for 4 h at 4 °C. The fixatives were diluted in PB. After fixations, the tissues were washed repeatedly in 0.1 M phosphate buffered saline (PBS, pH 7.4).

Immunohistochemical procedure

Sixteen µm thick serial sections were cut on a cryostat (Leica Jung 1800) and mounted on chromalum-gelatine-coated slides. The immunolabeling was accomplished by two-step indirect immunofluorescent technique as follows. Sections were rinsed several times in PBS, followed by

blocking in PBS containing 0.25% bovine serum albumin (BSA, Sigma) and 0.25% Triton-X 100 (Sigma) (PBS-TX-BSA) for 1 h at 4 °C. After that, sections were incubated for 24 h at 4 °C with different primary antibodies (Table 1) diluted in PBS-TX-BSA. Following washing in PBS-TX, the sections were incubated with a secondary antibody (Table 1) diluted in PBS-TX-BSA overnight at 4 °C, then mounted in a 3:1 mixture of glycerol and PBS. In case of double labeling, the sections were incubated for 24 h at 4 °C with the appropriate combination of the monoclonal anti-5-HT and one of the polyclonal primary antibodies. It was then followed first with an incubation with anti-mouse secondary antibody, then with a second incubation with anti-rabbit secondary antibody, each for 6 h at 4 °C. Finally, the sections were mounted in a 3:1 mixture of glycerol and PBS. The sections were viewed in a Leica TCS SP8 confocal laser scanning microscope (Leica Microsystems, Germany) equipped with appropriate wavelength-filter configuration settings. The necessary number of optical sections (15–30) with 0.5–0.8 µm step-size were made to capture of all visualized details. Image processing was performed by LasX (Leica Microsystems, Germany) software.

HPLC–MS assay

Sample preparation

The transmitter (5-HT, DA, HA, Glu) content of different peripheral tissues (tentacle, lip, foot) and, for comparison, that of the whole CNS was measured. For extraction of signal molecules acetonitrile (50 µL/mg) was applied containing 0.1% formic acid and 0.01 m/v% dithiothreitol. Dopamine-1,1,2,2-d₄ HBr (Sigma-Aldrich) internal standard was added to the tissues. The final concentration of internal standard was

Table 1 Antibodies applied during the immunohistochemical procedure

Antibodies	Producer and catalog number; raised in; reference	Dilution
Primary antibodies		
Monoclonal		
Serotonin (5-HT)	Dako (Glostrup, Denmark) #Mo75801-2; mouse (Balog et al. 2012)	1:500
Polyclonal		
Histamine (HA)	Merck/Sigma (Darmstadt, Germany) #H7403; rabbit (Panula et al. 1990; Hegedűs et al. 2004; Baronio et al. 2018)	1:1000
Glutamate (Glu)	Merck/Sigma (Darmstadt, Germany) #AB5018; rabbit (Hatakeyama et al. 2007; Nivison-Smith et al. 2013)	1:1000
Tyrosine hydroxylase (TH)	Merck/Sigma (Darmstadt, Germany) #ab152; rabbit (Leksomboon et al. 2012; Lin et al. 2014)	1:500
FMRamide (Fa)	ImmunoStar (Stillwater, MN) #20091; rabbit (Battonyai et al. 2018; Yurchenko et al. 2018)	1:1000
Mytilus inhibitory peptide (MIP)	Immunobiological Laboratories (Gunma, Japan) rabbit (Fujisawa 1996; Elekes et al. 2000)	1:1000
Secondary antibodies		
Fluorescein isothiocyanate (FITC)	Invitrogen (Carlsbad, CA) #A24507; donkey; anti-mouse	1:200
Tetramethylrhodamine (TRITC)	Invitrogen (Carlsbad, CA) #A16040; donkey; anti-rabbit	1:200

100 ng/mL. Thereafter, tissues were homogenized and were explored with a high energy ultrasonicator UIS250V (Hielscher Ultrasound Technology) at 6×10 s, applying ice cooling between cycles. Samples were then vortex mixed and centrifuged (Heraeus Biofuge Pico, Thermo Fisher Scientific) at 10,000 rpm for 5 min. Spinning supernatants were loaded in pure tubes and the solvents were evaporated with a SpeedVac concentrator (Eppendorf Life Sciences) at room temperature. The samples were dissolved in 150 μ L ultra-pure water containing 0.1% formic acid and loaded into autosampler vials for HPLC–MS measurements.

Measurements

Analyses were performed with a complex Ultimate 3000 (Dionex, Sunnyvale, USA) micro HPLC system and a Qexactive UHR mass spectrometer (Thermo Fisher Scientific, Waltham, MA, USA). For the separations, gradient elution (Maasz et al. 2017) were performed on a security guard column equipped Kinetex PFP column (100 mm \times 2.1 mm i.d., particle size 2.6 μ m, Phenomenex, Torrance, USA). The mass spectrometer equipped with a HESI source was used in the positive ion mode for mass detection. Filters of parent ion scan (SIM-single ion monitoring) and fragment ion scan (MS/MS) modes were used for selective and sensitive detection of analytes. The most intense precursor-to-fragment transitions were used for quantitative analysis; for DA: 154.1 \rightarrow 137.1 *m/z*, for 5-HT: 177.1 \rightarrow 160.1 *m/z*, for HA: 111.1 \rightarrow 95.1, for Glu: 148.1 \rightarrow 84.1 and for d4-DA: 158.1 \rightarrow 141.1. To the fragmentation 35 eV was applied as the normalized collision energy (Sarvari et al. 2014; Wei et al. 2014).

Quantification

Five-point calibration curves were made for the quantitative analysis, using 10.0; 50.0; 100.0; 500.0; 1000.0 pmol/ml monoamines and Glu as standards. Correlation coefficients (r^2) were between 0.9674 and 0.9950 for all acceptable calibration curves both in parent ion scan (MS) and fragment ion scan (MS/MS) modes (not shown). The limit of detection and the limit of quantification were between 2.9–6.5 pmol/ml and 5.8–9.4 pmol/ml, respectively. The signal molecules were identified by their exact molecular weight and by their fragments (mentioned above) from the tissue homogenates. The quantification of data was made parallel both in MS and MS/MS modes.

Results

Immunohistochemical demonstration of signal molecules in the lip, tentacle and foot of *Lymnaea*

Following the application of single labeling immunohistochemistry 5HT-IR, TH-IR, HA-IR, Glu-IR, Fa-IR and MIP-IR neuronal elements were present throughout the sensory region and subepithelial layer of the investigated peripheral organs, however, with partly different localization and density of occurrence (Fig. 1). 5-HT-immunoreactivity was bound exclusively to efferent axon processes forming a dense network at subepithelial level and below that in deeper regions (Fig. 1A). 5-HT-IR cell bodies did not occur at all.

The localization of 5-HTergic neurons is restricted to the CNS in *Lymnaea stagnalis* (and other gastropod species as well). The cerebral giant cell (CGC) is responsible for the 5-HTergic innervation of the cephalic regions (see “Introduction”), whereas in case of the foot the 5-HT-containing efferent neurons are located in the pedal ganglia, although McKenzie et al. (1998) described the presence of a few 5-HT-IR cells in the foot. Other immunolabeled (TH-IR, HA-IR, Glu-IR, Fa-IR, MIP-IR) elements represented partly as bipolar sensory neurons, and partly as axon processes, forming either a subepithelial plexus or running in deeper regions beneath the plexus (Figs. 1B–H, 2C, 3A, 4A, E). In case of the lip and tentacle, the surface epithelium displayed a wavy form along certain segments, where the epithelial protrusions were supplied by parallel running immunolabeled fibers (Fig. 2A).

The sensory axons were collected first in smaller, later beneath the subepithelial layer in larger, thick bundles (Figs. 3A, 4E). However, whether the latter contained only afferent (sensory) elements or efferent fibers as well could only partly be determined unequivocally (see also below). The distribution pattern and organization of the IR sensory and other neuronal elements were similar in the lip and tentacle, meanwhile the picture in the foot showed certain differences. In the foot, TH-IR sensory neurons occurred less frequently, whereas a TH-IR subepithelial plexus and numerous TH-IR fibers could be observed beneath the plexus (Figs. 1B, 2C). Numerous Glu-IR and MIP-IR bipolar neurons were found in the anterior region of the foot, whereas only few HA- and Fa-IR sensory cells were present (Fig. 1E, G, H). Along certain surface segments perpendicularly running Glu-IR and MIP-IR dendrites were lined up closely near to each other (Figs. 1E, H, 3D, 4F). Both Fa-IR and MIP-IR subepithelial plexi, as well as Fa-IR and MIP-IR fiber networks could be observed in the deeper levels of the foot (Figs. 1G, 4G).

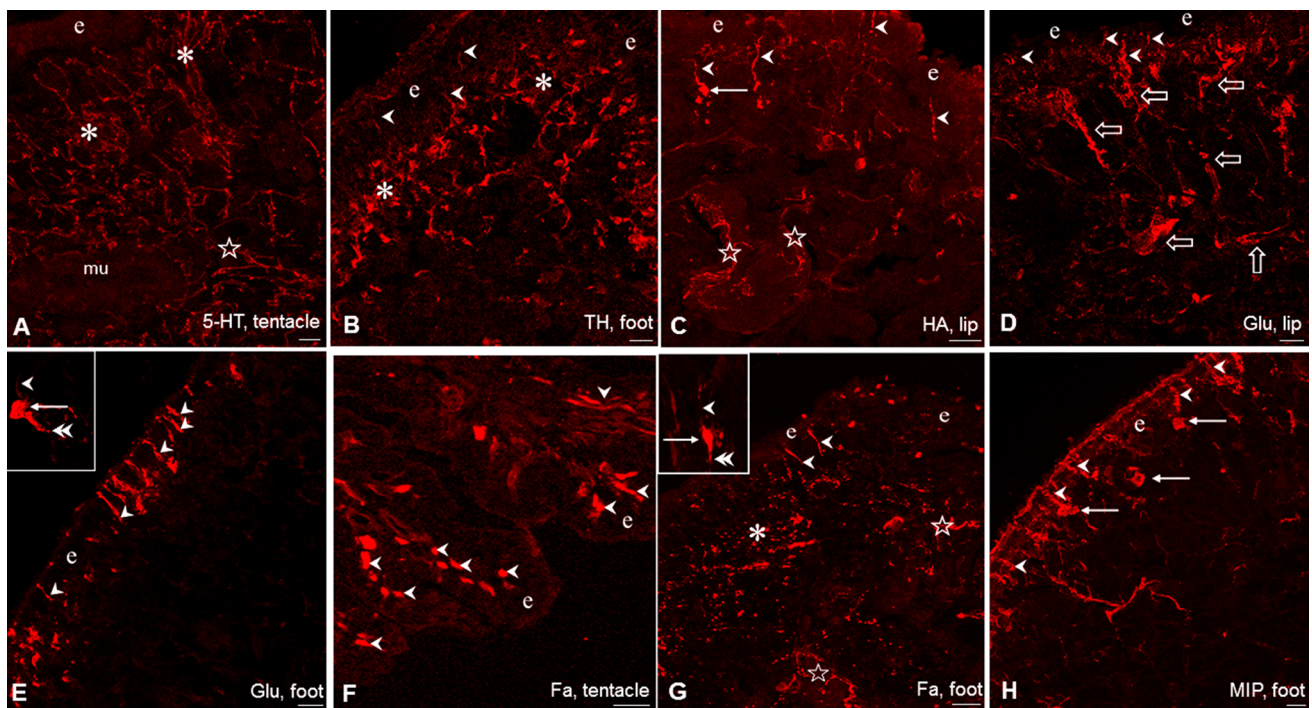


Fig. 1 Immunohistochemical visualization of neuronal elements containing different signal molecules in the tentacle, lip and foot of *Lymnaea*. **A, B, G** Rich innervation of the sub-epithelial layer (asterisks) and deeper regions (stars) in the tentacle by 5-HT-IR (**A**), and by TH-IR (**B**) and Fa-IR (**G**) fibers in the foot. **C–F, H** Series of labeled sensory elements in the tentacle, lip and foot, showing both sensory perikarya (arrows) and sensory dendrite (arrowheads). In **C, G** stars

mark labeled fibers in the deeper regions, and in **D** large open arrows indicate sensory axon bundles. Insets: enlarged view of a Glu-IR (**E**) and a Fa-IR (**G**) sensory neuron, respectively, in the foot with labeled perikaryon (arrow), dendrite (arrowhead), and axon process (double arrowhead). *e* epithelial layer. Scale bars: **A–C** 20 μ m; **D, E, H** 30 μ m; **F, G** 50 μ m. Insets: **G** 10 μ m; **E** 20 μ m

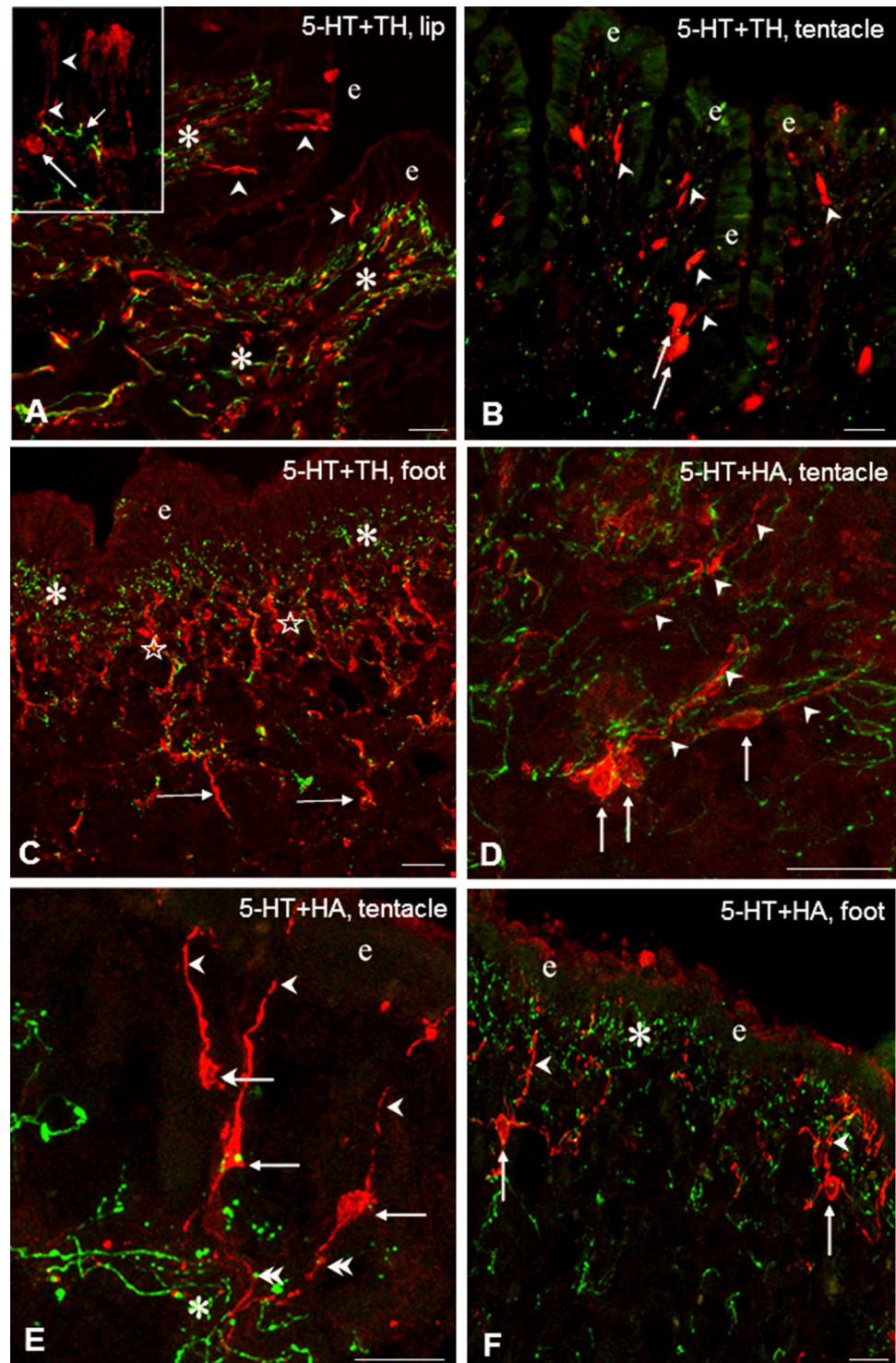
Relationship of neuro-chemically different sensory (afferent) elements to 5-HTergic efferent innervation of central origin in the lip, tentacle and foot of *Lymnaea*

Double immunostaining was performed in the three peripheral organs to study the putative functional–anatomical relationship established between the sensory elements containing different signaling molecules and the 5-HT-IR efferent innervation. Following double labeling, a distinct, separated intracellular localization of the different immunolabelings could be observed. Co-localization of 5-HT-IR with other immunolabeled elements was not found. In the epithelial and subepithelial layers, efferent 5-HT-IR innervation was found in four different positions, related to the other five neurochemically different (TH-IR, HA-IR, Glu-IR, Fa-IR, MIP-IR) sensory structures. In all cases, the 5-HT-IR subepithelial plexus running parallel with the surface of sensory epithelium was found in close localization with different parts (dendrite, cell axon) of labeled sensory neurons (e.g. Figs. 2F, 3A, D, 4G). In details, (1) the plexus was crossed perpendicularly by sensory dendrites (Figs. 2A, B, D, E, F, 3A, 4F); (2) a single 5-HT-IR fiber projected to a

sensory dendrite in the outermost layer of the sensory epithelium (Figs. 2A, inset; 4E, inset); (3) labeled sensory cell bodies were embedded in the plexus (Fig. 4E, inset), and finally (4) 5-HT-IR and other IR fibers appeared together, mixed, either running parallel (Fig. 2A) or organized in an intimate network-like arrangement of varicose fibers at the wavy protrusions of the subepithelial region in the lip and tentacle (Fig. 4B). However, in these cases, the sensory and/or efferent character of the varicose fibers occurring together in close arrangement with the efferent 5-HT-IR axons could not be defined unequivocally. When certain segments of the epithelium was characterized by a wavy appearance in the tentacle and lip, 5-HT-IR and other immunolabeled processes invaded the subepithelial area of the protrusions (Fig. 2A). Finally, 5-HT-IR elements located in the deeper regions beneath the subepithelial layer appeared in various interaction-like arrangements with any of the other five immunolabeled systems (Figs. 2C, 4A D, E).

Close relationship between 5-HT-IR and other (sensory and non-sensory) IR structures could also be observed both in the subepithelial and deeper regions, suggesting interaction between these neuronal elements. Examples for sites of possible close intercellular contacts occurred

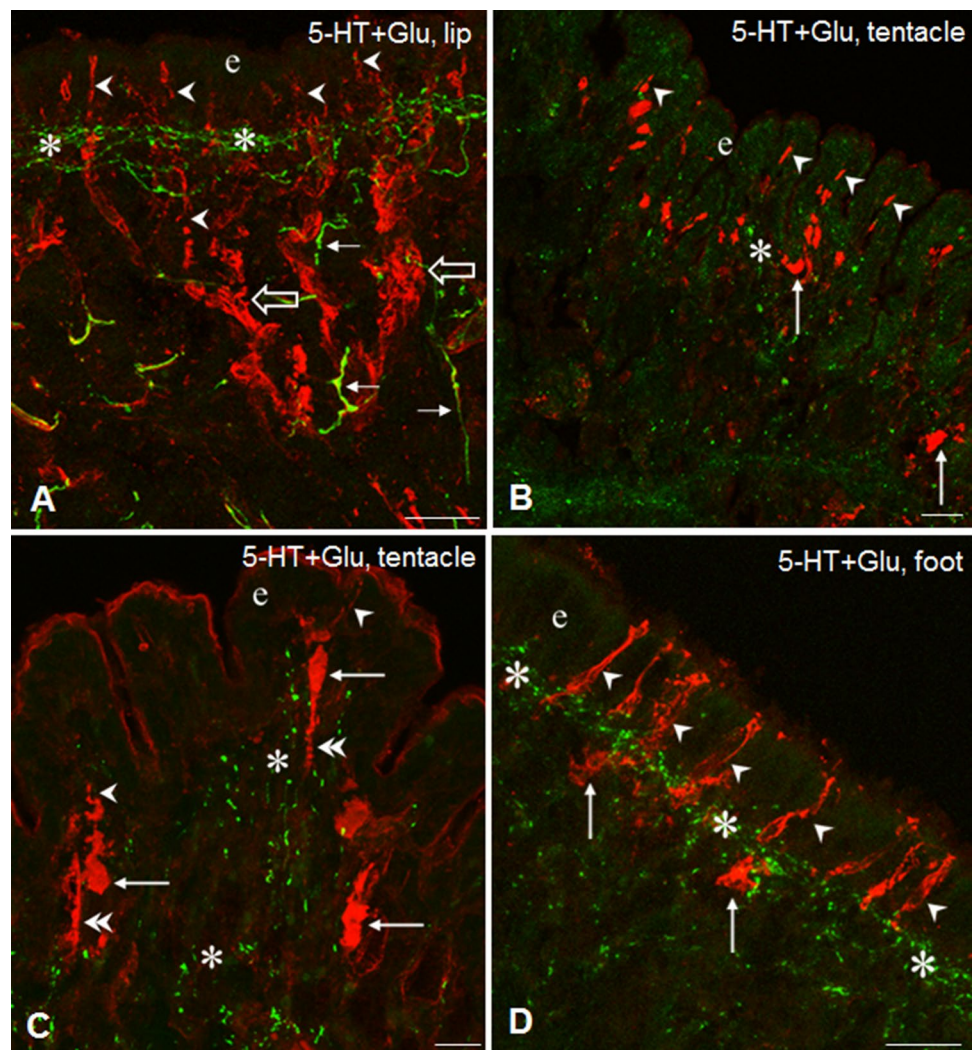
Fig. 2 TH-IR (A–C, red) and HA-IR (D–F, red) sensory elements and their relationship to 5-HT-IR elements (green) in the tentacle, lip and foot of *Lymnaea*. **A** Innervation of a subepithelial segment in the lip by parallel running 5-HT-IR and TH-IR varicose fibers (asterisks). Note TH-IR sensory dendrites (arrowheads) in the epithelial layer (e). Inset: A TH-IR sensory neuron (arrow) projects with its dendrite (arrowhead) to the surface. Note a 5-HT-IR varicose fiber nearby (short arrow). **B** In the tentacle both TH-IR dendrites (arrowheads) and perikarya (arrows) are seen among scattered 5-HT-IR elements. e-epithelial layer. **C** Immense innervation of the subepithelial layer by 5-HT-IR (asterisks) and by perpendicularly running TH-IR (stars) fibers in the foot. Note TH-IR processes projecting further in the deeper region (arrows). **D** HA-IR sensory cells (arrows) with their dendrites (arrowheads) embedded in a network of varicose 5-HT-IR fibers (green) in the sub-epithelial layer of the tentacle. **E** HA-IR sensory neurons (arrow) displaying full morphology with dendrites (arrowheads) and axons (double arrowheads), the latter crossing 5-HT-IR varicose fibers. e-epithelial layer. **F** HA-IR sensory neurons (arrows) project with their dendrites (arrowheads) toward the surface of the epithelial layer (e) through the sub-epithelial 5HT-IR system (asterisk). Scale bars: A, D, E, F 20 μ m; B 25 μ m; C 30 μ m. Inset: 10 μ m



in the tentacle, lip and foot sensory epithelial and subepithelial layers, where anatomically different parts (axon, cell body, dendrite) of sensory cells (Figs. 2D, E—HA-IR, 3A, D—Glu-IR, 4B, C—Fa-IR) were encompassed by

5-HT-IR efferent fibers bearing numerous varicosities. Also, in deeper regions, beneath the subepithelial layer, 5-HT-IR varicose fibers were found located over or

Fig. 3 Glu-IR (red) sensory elements and their relationship to 5-HT-IR elements (green) in the tentacle, lip and foot of *Lymnaea*. **A** Glu-IR sensory dendrites (arrowheads) running to the surface of the epithelial layer (e) through the subepithelial 5-HT-IR network (asterisk) in the lip. Open arrows-thick Glu-IR sensory axon bundles, arrows- 5-HT-IR fibers. **B**, **C** Glu-IR sensory neurons in the tentacle with their sensory dendrites (arrowheads) in the epithelium (e), and perikarya (arrows) and sensory axons (double arrowheads) in the subepithelial layer (asterisk). **D** Series of Glu-IR sensory dendrites (arrowheads) running perpendicularly to the surface of the epithelium (e) across the 5-HT-IR subepithelial plexus (asterisks). Arrow-sensory perikarya. Scale bars: **A**, **D** 30 μ m; **B** 40 μ m; **C** 20 μ m



running in close vicinity of other immunolabeled thick axon bundles (Fig. 4E).

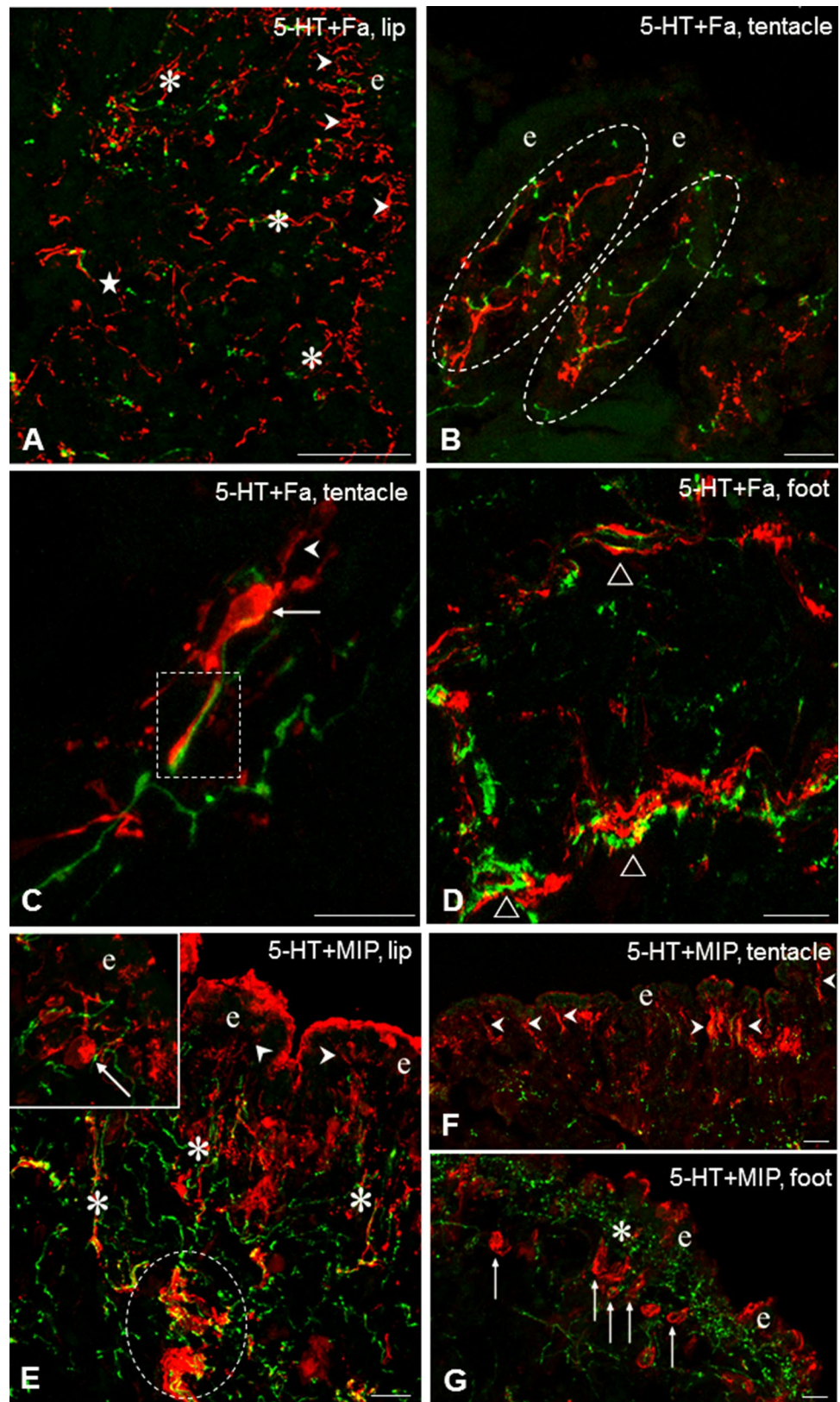
Concentration of signal molecules in peripheral organs (lip, tentacle and foot) of *Lymnaea*

Associated with our immunohistochemical investigations, HPLC–MS measurements were carried out to identify and quantify the concentration of different signal molecules (5HT, DA, HA, Glu) in the foot, lip and tentacles. All the signal molecules assayed were detected in the peripheral organs, although, with markedly different concentrations (ng/mg) as follows (see also Fig. 5): Glu (lip—101,667; foot—110,136; tentacles—165,369;) > 5-HT (lip—42,683, foot—21,443, tentacles—51,222) > DA (lip—5568, foot—6095, tentacles—5971) > HA (0193—lip, foot—0082, tentacles—0297). As it can be seen, among the concentrations of Glu and 5-HT versus DA and HA there were orders of magnitude difference.

Discussion

Our present results obtained on three different peripheral organs (lip, tentacle, foot) of the pond snail, *Lymnaea stagnalis*, indicate the following. (1) A broad range of (partly) still not identified signaling molecules is present in the neuronal elements of the epithelial and sub-epithelial area of these organs. (2) The signaling molecules visualized are possibly involved both in forwarding sensory information to the CNS and in the efferent innervation of the subepithelial and even deeper layers. (3) It is suggested that the subepithelial and deeper layers are the site of local processing, and modification of the sensory information by elements of central origin, although the primary site of interactions seems to be the subepithelial layer containing the plexus, (4) The subepithelial and deeper layers may also be the site of the innervation of muscular and glandular elements, as well as the source of 5-HTergic innervation of the ciliary cells, hence contributing to both exploring the source of the chemical and physical stimuli of the surrounding, and also elaborating responses

Fig. 4 Fa-IR (Fa, **A–D**, red) and MIP-IR (**E–G**, red) sensory neurons and their relationship to 5-HT-IR elements (green) in the tentacle, lip and foot of *Lymnaea*. **A** Rich Fa-IR innervation both in the subepithelial (arrowheads) and deeper layers (asterisks) of the lip. Only scattered 5-HT-IR fibers can be seen. **B** Detail from the tentacle showing intermingled 5-HT-IR and Fa-IR varicose fibers (encircled) in the subepithelial layer. **C** Higher magnification of a long, interaction-like, close position (rectangle) of a Fa-IR sensory axon and a 5-HT-IR process in the tentacle. Arrow—the Fa-IR sensory cell body, arrowhead—sensory dendrite. **D** 5-HT-IR and Fa-IR axon processes running nearby (open triangles) in the subepithelial and deeper regions of the foot. **E** Localization of 5-HT-IR and MIP-IR fibers in the subepithelial layer (asterisks) of the lip. Note 5-HT-IR varicose fibers located within and closely around a thick MIP-IR axon bundle (encircled). 5-HT-IR fibers running close around the sensory dendrite (arrowhead) and cell body (arrow) of a MIP-IR neuron. **F**, **G** MIP-IR sensory dendrites (**E**, arrowheads) in the lip and cell bodies (**F**, arrows) in the foot, accompanied with 5-HT-IR elements (asterisk). e—epithelial layer. Scale bars: **A** 50 μm ; **B**, **C**, **E**, **F** 30 μm ; **D**, **G** 20 μm



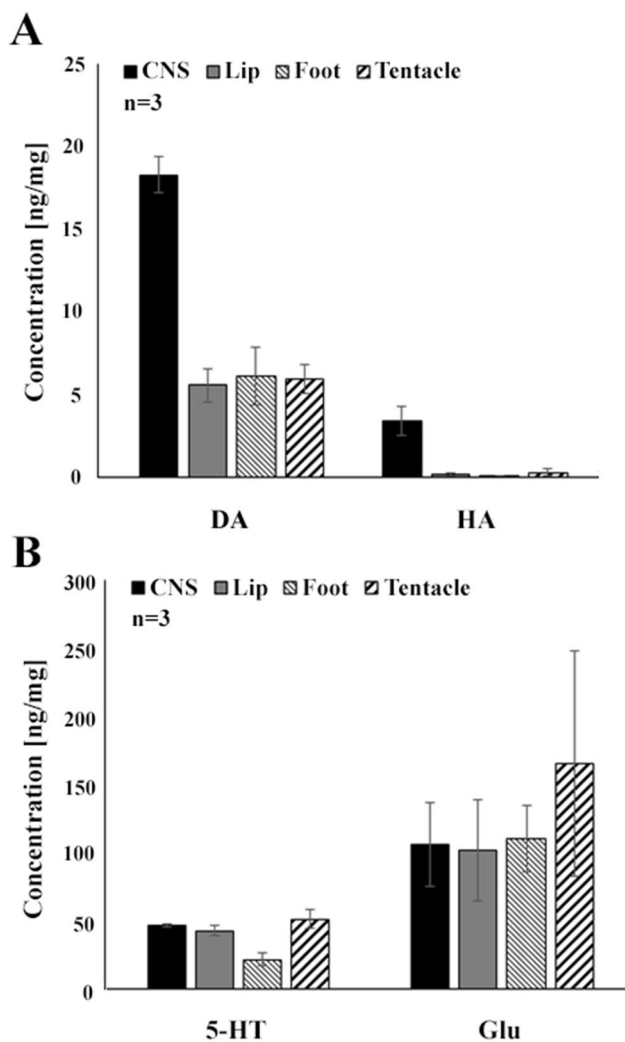


Fig. 5 Monoamine and amino acid contents of peripheral organs (lip, tentacle, foot) of *Lymnaea*, determined by HPLC–MS assay. **A** Dopaamine (DA) and histamine (HA), **B** serotonin (5-HT) and glutamate (Glu). Mean \pm SD; $n=3$

to the environmental stimuli. (5) The lack of evidence for the co-localization of different transmitter substances refers to the separation of the neuro-chemically different signaling elements.

The presence of several signal molecules (DA [TH], HA, Glu, NO) in neuronal elements located in the sensory epithelium of different peripheral regions of adult and developing *Lymnaea* has been described earlier using fluorescence histochemistry and/or immunohistochemical staining. Glu containing bipolar sensory cells were described by Hatakeyama et al. (2007) and HAergic sensory elements were demonstrated by Hegedűs et al. (2004) in the lip and foot, whereas earlier and more recent data also indicated the presence of NO (NADPHd) in the lip, tentacle and foot (Serfőző et al. 1998; Wyeth and Croll 2011), and DA [TH], among others, in the foot, lip and tentacle (Croll et al. 1999; Wyeth

and Croll 2011). In the current study, the presence of two additional signal molecules, the neuropeptides, Fa and MIP, was demonstrated in sensory cells. Consequently, the pool of chemical substances involved in sensory signaling processes is wider than it has been known before (Wyeth and Croll 2011; Wyeth 2019). Analyzing the neuronal localization of the Fa gene encoded peptides (Benjamin and Burke 1994) in the developing, post-metamorphic *Lymnaea*, Voronehskaya and Elekes (2003) demonstrated sensory neurons in the lip, mantle and foot, displaying immunoreactivity to antibody raised against EFLRIamide, a member of the encoded peptide family, but no Fa-IR sensory neurons were found. At the same time, Fa-containing sensory cells were described in the tentacular olfactory system of other gastropod species like *Limax* (Suzuki et al. 1997) and *Aplysia* (Wollesen et al. 2007). In a preliminary study MIP-IR bipolar sensory cells were demonstrated in the mantle edge of late, post-metamorphic *Lymnaea* embryos (Elekes, unpublished), whereas in a detailed immunohistochemical study performed on adults only efferent MIP-IR fibers could be visualized in different peripheral regions (Elekes et al. 2000). Regarding other small molecular weight transmitters found in the *Lymnaea* periphery, HA and Glu were demonstrated in insect photoreceptor cells (Sarthy 2013; Nässel 2013).

Although qualitative immunohistochemistry cannot provide any information on the quantity of the signal molecules visualized in the periphery, certain consequences can though be drawn based on the results of our HPLC-assay. Out of the transmitters visualized both in the sensory elements and other neuronal components of the three peripheral organs studied, Glu was detected in the highest concentration, followed by DA. The high Glu concentration appear to be in good correlation with literature data, reporting that Glu is important neurotransmitter at the gastropod periphery (Walker 1986; Walker and Holden-Dye 1991; Kononenko and Zhukov 2005), whereas the relative high concentration of DA may correspond well to the frequent occurrence of TH-IR elements both in the sensory and lower subepithelial and deeper levels. It is also to be noted that out of the three peripheral regions, the highest concentration of the immunohistochemically visualized neurotransmitters, DA, HA and Glu, were detected in the tentacles, raising the role of these substances in transmitting sensory stimuli. The high concentration of 5-HT detected in the lip, tentacle and foot corresponds to the overall presence of the dense 5-HT-IR innervation. According to earlier literature data, there is a rich 5-HTergic projection system of central 5-HTergic neurons to the periphery, including the cephalic regions and the foot (Walker 1986; Syed et al. 1988; Walker and Holden-Dye 1991; Chase 2002; Balog et al. 2012). McKenzie et al. (1998) also detected significantly high 5-HT and DA concentrations in the *Lymnaea* foot and they correlated the presence of 5-HT with the demonstration of 5-HT-IR

varicose fibers both under the epithelium and deeper regions. The ciliated epithelial cells of the *Lymnaea* foot were shown to stand under 5-HTergic regulation (Audesirk et al. 1979; Syed et al. 1988). The role of 5-HT in the early embryonic rotation performed by ciliary cells in *Lymnaea* was also demonstrated (Diefenbach et al. 1991).

In a detailed IHC analysis, Wyeth and Croll (2011) demonstrated sensory cells containing HA, NO and catecholamines (DA), respectively, in the cephalic sensory organs (lip, tentacle) of *Lymnaea*. The study revealed that the three afferent signaling systems formed a network beneath the sensory epithelium, too. In our present study, it has been shown that both the subepithelial layer contains a dense 5-HT-IR nerve plexus running parallel with the surface epithelium, whereas another differently organized labeled network is located below. In case of double-labeling experiments, close, near-by localization of 5-HT-IR varicose elements, known to mark elements of exclusively extrinsic (central) origin, and labeled sensory axons could be observed. This anatomical arrangement raises a possible modulatory role of central (5-HTergic) input influencing the sensory information *en route*, before reaching the CNS. However, an inverse action cannot be excluded either, in which the sensory signal may exert a modulatory effect on elements of central origin. The morphological background of the possibility of the peripheral modulation has earlier been revealed for example in the snail (*Helix*) visceral nerve (Elekes et al. 1985) and the crayfish (*Orconectes*) stretch receptors (Elekes and Florey 1987). In other marine gastropod species, e. g. *Aplysia*, *Tritonia*, *Pleurobranchia*, *Phestilla*, 5-HT-IR elements were shown to form glomerular structures in the the rhinophores (Moroz et al. 1997; Wertz et al. 2006; Wollesen et al. 2007; Faller et al. 2008), while in a detailed study on different peripheral tissues of *Pleurobranchia* and *Tritonia* Moroz et al. (1997) described both glomerular and transversally running organization of 5-HT-IR processes in sensory areas proposing for the latter a direct modulatory role of afferent pathways. At ultrastructural level, Gobbeler and Klussmann-Kolb (2007) have also demonstrated the presence of glomeruli in the cephalic sensory organs of different opisthobranch species, responsible for processing the sensory information, meanwhile, like us, neither Zylstra (1972a, b) nor Zaitseva and Bocharova (1981) reported the presence of subepithelial glomerular structures or peripheral ganglia in *Lymnaea*.

In our present investigations, Fa-IR elements were also observed contributing to the subepithelial plexus, even if the density of this plexus was considerably lower compared to that established by 5-HT-IR fibers. The presence of Fa-containing axon processes and the role of Fa (and other oligopeptides) were demonstrated in the periphery of *Lymnaea* and closely related species (*Planorbis*, *Helisoma*) (Schot and Boer 1982; Sonetti et al. 1988; Bulloch et al. 1988; Buckett et al. 1990; Voronezhskaya and Elekes 2003 and see also

Walker et al. 2009). In addition, Glu, HA and MIP are not to be excluded either to function as signal molecules in central efferents, forming connection with the sensory and other components (muscle fibers and gland cells) of the cephalic organs and the foot. Previous immunohistochemical studies delivered evidences that HA-IR, Glu-IR, and MIP-IR fibers, innervated several peripheral organs, including lip and foot of *Lymnaea* (Elekes et al. 2000; Hegedűs et al. 2004; Hatakeyama et al. 2007). Although not in *Lymnaea*, but in *Helix*, immunogold electron microscopic studies demonstrated close but unspecialized neuromuscular and neuroglandular membrane contacts established by Fa-IR (Elekes and Ude 1994) and MIP-IR (Elekes 2000) axon varicosities. It seems that the efferent innervation of the subepithelial and deeper regions in the studied peripheral organs consists of a rich combination of signaling systems, supposedly involved in a complex form of local regulatory processes.

Recently, Wyeth (2019) has reviewed the neuronal (sensory-motor) background of the olfactory navigation in aquatic gastropods. Two ways of processing sensory information were suggested (see Fig. 7 in Wyeth 2019). One entering directly the CNS and another connected to a peripheral ganglion (or glomeruli) from where then, by inserting interneurons, efferent (motor) output is sent to the muscle system and the ciliary epithelial surface as well. In contrast, based on our observations, summarized in Fig. 6, local, subepithelial and deeper networks seem to be potential sites of the sensory information processing in the tentacle, the lip and the foot of *Lymnaea*, without the involvement of a peripheral ganglion or subepithelial glomeruli. These types of local networks including interaction between the sensory and efferent elements may ensure fast and definitive responses to different sensory stimuli. In a recent study on *Lymnaea*, Vehovszky et al. (2019) have demonstrated that following the application of the allelochemical tannic acid, both the afferent and efferent peripheral functions were affected. Feeding activity was reduced by blocking the sensory pathway and the locomotion activity was also inhibited, supposedly also through the sensory afferents. These observations may also refer to the important role of local (peripheral) elements in processing and/or modulating sensory information and the execution of appropriate efferent responses to various environmental cues. Peripheral circuits involved in sensory-motor processes were also suggested by Peretz et al. (1976) and Croll (2003) in case of the *Aplysia* gill withdrawal reflex. Croll (2003) also presented a scheme for the complex, central and peripheral innervation of the syphon and gill, in which two types of catecholaminergic neurons were demonstrated. One was a bipolar sensory cell and another a multipolar. Each projected to CNS motoneurons, but the multipolar cell ended also on the catecholaminergic sensory cells, hence forming a subepithelial modulatory level of the sensory information. The scheme, however,

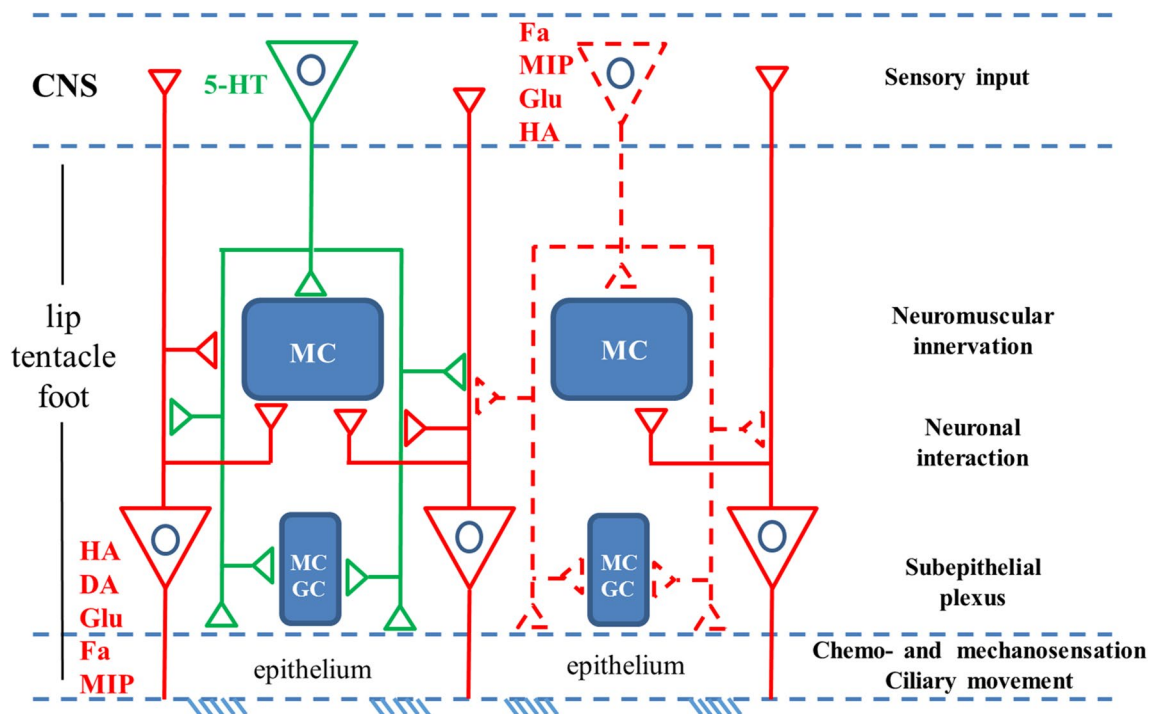


Fig. 6 Schematic representation of levels and possible forms of innervation, as well as of the sensory-motor interaction in the lip, tentacle and foot of *Lymnaea*. Colors correspond to the immunofluorescence labeling (FITC-green, 5-HT, TRITC-red, others). Dashed red lines-

putative (possible) innervation of central origin, in addition to 5-HT (based partly on literature data, see; Schot and Boer 1982; Walker 1992; Elekes et al. 2000; Hegedűs et al. 2004; Hatakeyama et al. 2007)

differs from that suggested by us in *Lymnaea*, in which no peripheral multipolar cells of any kind of signal molecule content was detected.

Acknowledgements This work was supported by OTKA Grants nos. K111990 (KE) and PD124161 (GM). The skillful technical assistance of Mr. Boldizsár Balázs in electron microscopy is greatly acknowledged.

Funding Open access funding provided by ELKH Centre for Ecological Research.

Open Access This article is licensed under a Creative Commons Attribution 4.0 International License, which permits use, sharing, adaptation, distribution and reproduction in any medium or format, as long as you give appropriate credit to the original author(s) and the source, provide a link to the Creative Commons licence, and indicate if changes were made. The images or other third party material in this article are included in the article's Creative Commons licence, unless indicated otherwise in a credit line to the material. If material is not included in the article's Creative Commons licence and your intended use is not permitted by statutory regulation or exceeds the permitted use, you will need to obtain permission directly from the copyright holder. To view a copy of this licence, visit <http://creativecommons.org/licenses/by/4.0/>.

References

- Audesirk G, McCaman RE, Willows AO (1979) The role of serotonin in the control of pedal ciliary activity by identified neurons in *Tritonia diomedea*. *Comp Biochem Physiol C* 62C:87–91
- Balog G, Voronezhskaya EE, Hiripi L, Elekes K (2012) Organization of the serotonergic innervation of the feeding (buccal) musculature during the maturation of the pond snail *Lymnaea stagnalis*: a morphological, biochemical and physiological study. *J Comp Neurol* 520:315–329
- Baronio D, Puttonen HAJ, Sundvik M, Semenova S, Lehtonen E, Panula P (2018) Embryonic exposure to valproic acid affects the histaminergic system and the social behaviour of adult zebrafish (*Danio rerio*). *Br J Pharmacol* 175(5):797–809
- Battonyai I, Voronezhskaya EE, Obukhova A, Horváth R, Nezlin LP, Elekes K (2018) Neuronal development in the larvae of the invasive biofouler *Dreissena polymorpha* (Mollusca: Bivalvia) with special attention to sensory elements and swimming behavior. *Biol Bull* 234:192–206
- Benjamin PR, Burke JF (1994) Alternative mRNA splicing of the FMRFamide gene and its role in neuropeptidergic signalling in a defined neural network. *Bioassays* 16:335–342
- Brown JW, Schaub BM, Klusas BL, Tran AX, Duman AJ, Haney SJ, Boris AC, Flanagan MP, Delgado N, Torres G et al (2018) A role for dopamine in the peripheral sensory processing of a gastropod mollusc. *PLoS ONE* 13:e0208891
- Buckett KJ, Peters M, Dockray GJ, Van Minnen J, Benjamin PR (1990) Regulation of heartbeat in *Lymnaea* by motoneurons containing FMRFamide-like peptides. *J Neurophysiol* 63:1426–1435

- Bulloch AGM, Price DA, Murphy AD, Lee TD, Bowes HN (1988) FMRFamide peptides in *Helisoma*: identification and physiological actions at a peripheral synapse. *J Neurosci* 8:3459–3469
- Chase R (2001) Sensory organs and its nervous system. In: Barker GM (ed) *The biology of terrestrial molluscs*. CAB International, Wallingford, pp 179–211
- Chase R (2002) Behavior and its neural control in gastropod molluscs. Oxford University Press, New York
- Chase R, Tolloczko B (1993) Tracing neural pathways in snail olfaction: from the tip of the tentacles to the brain and beyond. *Microsc Res Tech* 24:214–230
- Croll RP (2001) Catecholamine-containing cells in the central nervous system and periphery of *Aplysia californica*. *J Comp Neurol* 441:91–105
- Croll RP (2003) Complexities of a simple system: new lessons, old challenges and peripheral questions for the gill withdrawal reflex of *Aplysia*. *Brain Res Brain Res Rev* 43:266–274
- Croll RP, Voronezhskaya EE, Hiripi L, Elekes K (1999) Development of catecholaminergic neurons in the pond snail, *Lymnaea stagnalis*. II. Postembryonic development of central and peripheral cells. *J Comp Neurol* 404:297–309
- Croll RP, Boudko DY, Pires A, Hadfield MG (2003) Transmitter contents of cells and fibers in the cephalic sensory organs of the gastropod mollusc *Phestilla sibogae*. *Cell Tissue Res* 314:437–448
- Diefenbach TJ, Koehncke NK, Goldberg JJ (1991) Characterization and development of rotational behavior in *Helisoma* embryos: role of endogenous serotonin. *J Neurobiol* 22:922–934
- Dorsett DA (1986) Brains to cells: the neuroanatomy of selected gastropod species. In: Willows AOD (ed) *The Mollusca*. Vol. 9, neurobiology and behavior, Part 2. Academic Press, Orlando-Toronto, pp 101–187
- Elekes K (2000) Ultrastructural aspects of peptidergic modulation in *Helix pomatia*. *Microsc Res Tech* 49(534):546
- Elekes K, Florey E (1987) New types of synaptic connections in the crayfish stretch receptor organs: an electron microscopic study. *J Neurocytol* 16:613–626
- Elekes K, Ude J (1994) Peripheral connections of FMRFamide-immunoreactive neurons in the snail *Helix pomatia*. An immunogold electron microscopic study. *J Neurocytol* 23:758–769
- Elekes K, Rózsa KS, Vehovszky Á, Hernádi L, Salánki J (1985) Ultrastructural organization of nerve cells and synaptic connections in the intestinal nerve of the snail *Helix pomatia* L. *Cell Tissue Res* 239:611–620
- Elekes K, Kiss T, Fujisawa Y, Hernádi L, Erdélyi L, Muneoka Y (2000) *Mytilus* inhibitory peptides (MIP) in the central and peripheral nervous system of the pulmonate gastropods *Lymnaea stagnalis* and *Helix pomatia*: distribution and physiological actions. *Cell Tissue Res* 302:115–134
- Elphick MR, Kemenes G, Staras K, O’Shea M (1995) Behavioral role for nitric oxide in chemosensory activation of feeding in a mollusc. *J Neurosci* 15:7653–7664
- Faller S, Staubach S, Klussmann-Kolb A (2008) Comparative immunohistochemistry of the cephalic sensory organs in Opisthobranchia (Mollusca, Gastropoda). *Zoomorphology* 127:227–239
- Fujisawa Y (1996) Immunohistochemical localization and Ca^{2+} -dependent release of *Mytilus* inhibitory peptides in the ABRM of *Mytilus edulis*. *Zool Sci* 13:795–801
- Gillette R (1991) On the significance on neuronal gigantism. *Biol Bull* 180:234–240
- Gillette R (2006) Evolution and function in serotonergic systems. *Integr Comp Biol* 46:838–846
- Gobbeler K, Klussmann-Kolb A (2007) A comparative ultrastructural investigation of the cephalic sensory organs in Opisthobranchia (Mollusca, Gastropoda). *Tissue Cell* 39:399–414
- Habib MR, Mohamed AH, Osman GY, El-Din ATS, Mossalem HS, Delgado N, Torres G, Rolón-Martínez S, Miller MW, Croll RP (2015) Histamine immunoreactive elements in the central and peripheral nervous systems of the snail, *Biomphalaria* spp, intermediate host for *Schistosoma mansoni*. *PLoS ONE* 10:e0129800
- Hatakeyama D, Aonuma H, Ito E, Elekes K (2007) Localization of glutamate-like immunoreactive neurons in the central and peripheral nervous system of the adult and developing pond snail, *Lymnaea stagnalis*. *Biol Bull* 213:172–186
- Hegedűs E, Kaslin J, Hiripi L, Kiss T, Panula P, Elekes K (2004) Histaminergic neurons in the central and peripheral nervous system of gastropods (*Helix*, *Lymnaea*): an immunocytochemical, biochemical, and electrophysiological approach. *J Comp Neurol* 475:391–405
- Hernádi L (1981) Light and electron microscopic investigation of the sensory cell bodies in the epidermis of the foot of the snail *Helix pomatia* L. *Acta Biol Acad Sci Hung* 32:19–32
- Hernádi L (1982) Organization of sensory pathways in the anterior tentacle of *Helix pomatia* L. A light microscopic study. *Z Mikr Anat Forsch* 96:695–703
- Hernádi L, Benedeczy I (1978) Light and electron microscopic investigation of the sensory dendrites in the epidermis of the foot of the snail, *Helix pomatia* L. *Acta Biol Acad Sci Hung* 29:233–247
- Hernádi L, Benedeczy I (1994) Ultra structural differentiation and the renewal of the receptor cells in the sensory epithelia of the lips and the anterior tentacles of the snail *Helix pomatia*. *Neurobiology (Bp)* 2:283–300
- Ierusalimsky VN, Balaban PM (2010) Two morphological sub-systems within the olfactory organs of a terrestrial snail. *Brain Res* 1326:68–74
- Ito I, Nakamura H, Kimura T, Suzuki H, Kawabata K, Ito E (2000) Neuronal components of the superior and inferior tentacles in the terrestrial slug, *Limax marginatus*. *Neurosci Res* 37:191–200
- Kandel ER (1976) Cellular basis of behaviour: an introduction to behavioral neurobiology. W. H. Freeman & Company, New York
- Kandel ER (1979) Behavioural biology of aplysia: origin and evolution. W. H. Freeman & Company, New York
- Kempf SC, Page LR, Pires A (1997) Development of serotonin-like immunoreactivity in the embryos and larvae of nudibranch molluscs with emphasis on the structure and possible function of the apical sensory organ. *J Comp Neurol* 386:507–528
- Kononenko NL, Zhukov VV (2005) Multiplicity of chemical mechanisms of regulation of muscle contractions in *Lymnaea stagnalis* L. *J Evol Biochem Phys* 41:54–62
- Leksomboon R, Chaijaroonkhanarak W, Arunyanart C, Umka J, Jones MK, Sripa B (2012) Organization of the nervous system in *Opisthokhorchis viverrini* investigated by histochemical and immunohistochemical study. *Parasitol Int* 61:107–111
- Lin S, Oswald D, Chandra V, Talbot C, Huetteroth W, Waddell S (2014) Neural correlates of water reward in thirsty *Drosophila*. *Nat Neurosci* 11:1536–1542
- Maasz G, Zrinyi Z, Reglodi D, Petrovics D, Rivnyak A, Kiss T, Jungling A, Tamas A, Pirger Z (2017) Pituitary adenylate cyclase-activating polypeptide (PACAP) has neuroprotective function in dopamine-based neurodegeneration developed in two parkinsonian models. *Dis Model Mech* 10:127–139
- Marois R, Carew TJ (1997) Fine structure of the apical ganglion and its serotonergic cells in larva of *Aplysia californica*. *Biol Bull* 192:388–398
- Marois R, Croll RP (1992) Development of serotoninlike immunoreactivity in the embryonic nervous system of the snail *Lymnaea stagnalis*. *J Comp Neurol* 322:255–265
- McKenzie JD, Cauce M, Hetherington M, Winlow W (1998) Serotonergic innervation of the snail foot. *J Neurocytol* 27:459–470

- Moroz LL (2006) Localization of putative nitrergic neurons in peripheral chemosensory areas and the central nervous system of *Aplysia californica*. *J Comp Neurol* 495:10–20
- Moroz LL, Sudlow LC, Jing J, Gillette R (1997) Serotonin-immunoreactivity in peripheral tissues of the opisthobranch molluscs *Pleurobranchaea californica* and *Tritonia diomedea*. *J Comp Neurol* 382:176–188
- Nässel DR (2013) Chemical neuroanatomy of the insect visual system. In: Singh NS, Strausfeld NJ (eds) *Neurobiology of sensory systems*. Springer, New York, pp 295–318
- Nivison-Smith L, Collin SP, Zhu Y, Ready S, Acosta ML, Hunt DM, Potter IC, Kalloniatis M (2013) Retinal amino acid neurochemistry of the southern hemisphere lamprey, *Geotria australis*. *PLoS One* 8:e58406
- Page LR, Parries SC (2000) Comparative study of the apical ganglion of planktotrophic caenogastropod larvae: ultrastructure and immunoreactivity to serotonin. *J Comp Neurol* 418:383–401
- Panula P, Airaksinen MS, Pirvola U, Kotilainen E (1990) A histamine-containing neuronal system in human brain. *Neuroscience* 34:127–132
- Pentreath VW, Cottrell GA (1974) Anatomy of an identified serotonin neurone studied by means of injection of tritiated ‘transmitter’. *Nature* 250:655–658
- Peretz B, Jacklet JW, Lukowiak K (1976) Habituation of reflexes in *Aplysia*: contribution of the peripheral and central nervous systems. *Science* 191:396–399
- Roubos EW, van der Wal-Divendal RM (1982) Sensory input to growth stimulating neuroendocrine cells of *Lymnaea stagnalis*. *Cell Tissue Res* 227:371–386
- Sarthy PV (2013) Recent progress in the identification of neurotransmitters used by vertebrate and invertebrate photoreceptors. In: Singh NS, Strausfeld NJ (eds) *Neurobiology of sensory systems*. Springer, New York, pp 267–273
- Sárvári M, Deli L, Kocsis P, Márk L, Maász G, Hrabouszky E, Kalló I, Gajári D, Vastagh C, Sümegi B et al (2014) Estradiol and isotype-selective estrogen receptor agonists modulate the mesocortical dopaminergic system in gonadectomized female rats. *Brain Res* 1583:1–11
- Schot LPC, Boer HH (1982) Immunocytochemical demonstration of peptidergic cells in the pond snail *Lymnaea stagnalis* with antiserum to the molluscan cardioactive tetrapeptide, FMRFamide. *Cell Tissue Res* 225:347–354
- Serfőző Z, Elekes K, Varga V (1998) NADPH-diaphorase activity in the nervous system of the embryonic and juvenile pond snail, *Lymnaea stagnalis*. *Cell Tissue Res* 292:579–586
- Sonetti D, Biondi C, Ferretti ME, Portolan A, Fasolo A (1988) Neurotransmitters in the CNS of the freshwater snail *Planorbis corneus*: localization and effects on the adenylate cyclase system of specific ganglia. In: Salánki J, Rózsa KS (eds) *Symposium Biologica Hungarica vol. 36. Neurobiology of invertebrates*. Akadémiai Kiadó, Budapest, pp 308–327
- Suzuki H, Kimura T, Sekiguchi T, Mizukami A (1997) FMRF amide-like-immunoreactive primary sensory neurons in the olfactory system of the terrestrial mollusc, *Limax marginatus*. *Cell Tissue Res* 289:339–345
- Syed NJ, Winlow W (1989) Morphology and electrophysiology of neurons innervating the ciliated locomotor epithelium in *Lymnaea stagnalis* (L.). *Comp Biochem Physiol* 93A:633–644
- Syed N, Harrison D, Winlow W (1988) Locomotion in *Lymnaea*—role of serotonergic motoneurons controlling the pedal cilia. In: Salánki J, Rózsa KS (eds) *Symposium Biologica Hungarica vol 36. Neurobiology of invertebrates*. Akadémiai Kiadó, Budapest, pp 308–327
- Vallejo D, Habib MR, Delgado N, Vaasjo LO, Croll RP, Miller MW (2014) Localization of tyrosine hydroxylase-like immunoreactivity in the nervous systems of *Biomphalaria glabrata* and *Biomphalaria alexandrina*, intermediate hosts for schistosomiasis. *J Comp Neurol* 522:2532–2552
- Vehovszky Á, Horváth R, Farkas A, Györi J, Elekes K (2019) The allelochemical tannic acid affects the locomotion and feeding behaviour of the pond snail, *Lymnaea stagnalis*, by inhibiting peripheral pathways. *Invert Neurosci* 19:10
- Voronezhskaya EE, Elekes K (2003) Expression of FMRFamide gene encoded peptides by identified neurons in embryos and juveniles of the pulmonate snail *Lymnaea stagnalis*. *Cell Tissue Res* 314:297–313
- Voronezhskaya EE, Hiripi L, Elekes K, Croll RP (1999) Development of catecholaminergic neurons in the pond snail, *Lymnaea stagnalis*: I. Embryonic development of dopamine-containing neurons and dopamine-dependent behaviors. *J Comp Neurol* 404:285–296
- Voronezhskaya EE, Khabarova MY, Nezhlin LP (2004) Apical sensory neurones mediate developmental retardation induced by conspecific environmental stimuli in freshwater pulmonate snails. *Development* 131:3671–3680
- Walker RJ (1986) Transmitters and modulators. In: Wilbur KM (ed) *The Mollusca*. Academic Press, New York, pp 27–485
- Walker RJ (1992) Neuroactive peptides with an RFamide or Famide carboxyl terminal. *Comp Biochem Physiol* 102C:213–222
- Walker RJ, Holden-Dye L (1991) Evolutionary aspects of transmitter molecules, their receptors and channels. *Parasitology* 102(Suppl):S7–29
- Walker RJ, Papaioannou S, Holden-Dye L (2009) A review of FMRFamide- and RFamide-like peptides in metazoa. *Invert Neurosci* 9:111–153
- Wei B, Li Q, Fan R, Su D, Chen X, Jia Y, Bi K (2014) Determination of monoamine and amino acid neurotransmitters and their metabolites in rat brain samples by UFLC-MS/MS for the study of the sedative-hypnotic effects observed during treatment with *S. chinensis*. *J Pharm Biomed* 88:416–422
- Wertz A, Rössler W, Obermayer M, Bickmeyer U (2006) Functional neuroanatomy of the rhinophore of *Aplysia punctate*. *Front Zool* 3:6
- Wollesen T, Wanninger A, Klussmann-Kolb A (2007) Neurogenesis of cephalic sensory organs of *Aplysia californica*. *Cell Tissue Res* 330:361–379
- Wyeth RC (2019) Olfactory navigation in aquatic gastropods. *J Exp Biol* 222:jeb185843. <https://doi.org/10.1242/jeb.185843>
- Wyeth RC, Croll RP (2011) Peripheral sensory cells in the cephalic sensory organs of *Lymnaea stagnalis*. *J Comp Neurol* 519:1894–1913
- Yurchenko OV, Skiteva OI, Voronezhskaya EE, Dyachuk VA (2018) Nervous system development in the pacific oyster, *Crassostrea gigas* (Mollusca:Bivalvia). *Front Zool* 15:10
- Zaitseva OV, Bocharova LS (1981) Sensory cells in the head skin of pond snails—fine-structure of sensory endings. *Cell Tissue Res* 220:797–807
- Zylstra U (1972a) Distribution and ultrastructure of epidermal sensory cells in the freshwater snails *Lymnaea stagnalis* and *Biomphalaria pfeifferi*. *Neth J Zool* 22:283–298
- Zylstra U (1972b) Histochemistry and ultrastructure of the epidermis and the subepidermal gland cells of the freshwater snails *Lymnaea stagnalis* and *Biomphalaria pfeifferi*. *Z Zellforsch* 130:93–134

Publisher's Note Springer Nature remains neutral with regard to jurisdictional claims in published maps and institutional affiliations.