

# Determining Uncertainty in Estimations of Global Surface Water Extent derived from a Diurnal Earth Observation Time-Series

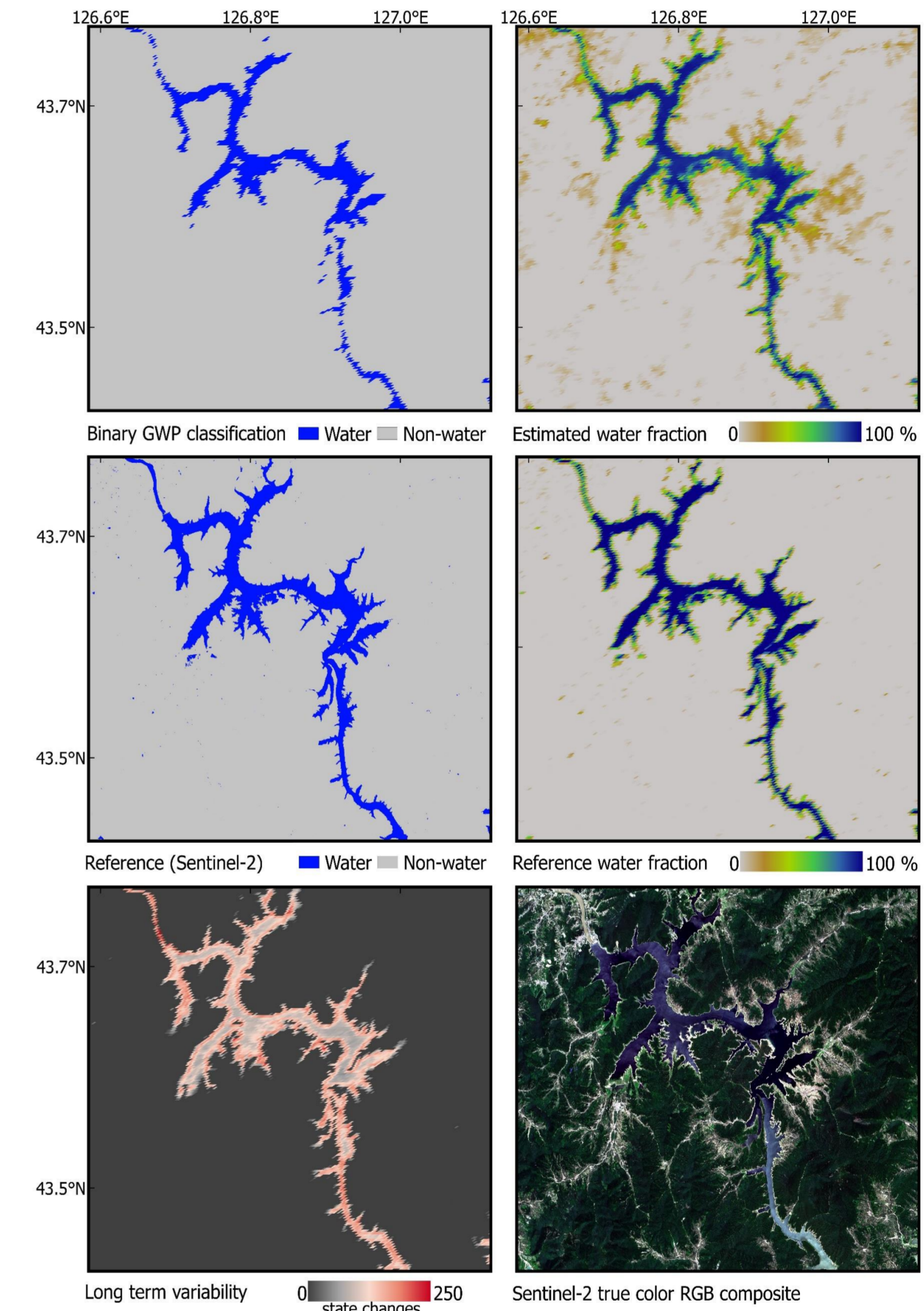
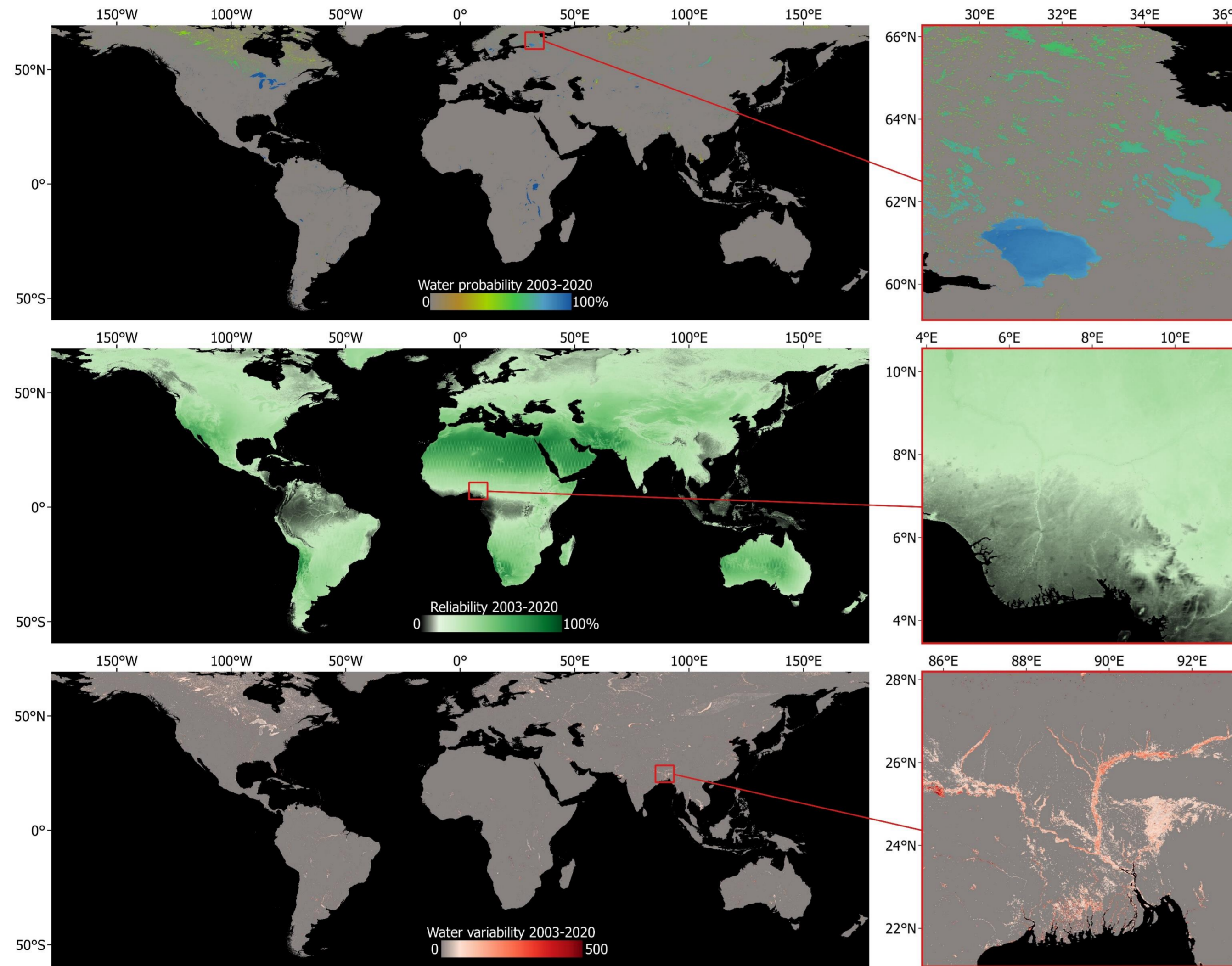
## Estimation of temporal uncertainty

By considering different temporal and spatial characteristics of surface water, six layers are generated featuring water probability and reliability on pixel level.

1. Long-term (complete time-series)
2. Temporal vicinity (year and month)
3. Temporal closest observations
4. Spatiotemporal neighborhood
5. Seasonal (reoccurrence)
6. Combination (reliability weighted mean)

## Estimation of observational uncertainty

Subpixel water fraction is systematically estimated by a linear mixture model, utilizing classification probability and time-series derived pure pixel reference information.



## Quantifying spatiotemporal characteristics

