



# Saintis

*Volume 17 Nomor 1, April 2017 : 1-113*

**Analisis Pengaruh Perubahan Tata Guna Lahan Terhadap Saluran Drainase Jalan Dorak Berdasarkan Pola Rencana Tata Ruang Tata Wilayah Kabupaten Meranti Tahun 2013-2032**

Menggunakan Model Epa Swmm 5.0

Imam Suprayogi, Bambang Sujatnoko, Yenita Morena, Khoirul Ghofirin

**Perhitungan Lendutan Perkerasan Jalan Sistem Cakar Ayam Modifikasi Dengan Variasi Faktor Aman Pada Tambahan Modulus Reaksi Subgrade**

Dinda Rosita Agustina, Anas Puri, Roty Ardiansyah

**Perbaikan Sifat Mekanis Tanah Lempung Ekspansif Menggunakan Abu Vulkanis Sinabung dan Kapur**

Devi Oktaviana Latif, Ahmad Rifa'i, Kabul Basah Suryolelono

**The Friction Coefficient of Cohesive Soils and Geotextile: An Approach Based On the Direct Shear Test Data**

Anas Puri

**Kualitas Pelayanan Trans Metro Pekanbaru Sebagai Angkutan Komuter Mahasiswa (Studi Kasus: Kelompok Mahasiswa Komuter Fakultas Teknik Universitas Islam Riau)**

Muhammad Zaenal Muttaqin

**Tinjauan Kuat Tekan Bata Ringan Menggunakan Bahan Tambah *Foaming Agent***

Hendra Taufik, Alex Kurniawandy, Deri Arita

**Estimasi Debit Puncak Sub DAS Sail Menggunakan Integrasi Data Penginderaan Jauh dan Sistem Informasi Geografi (SIG)**

Idham Nugraha

**Penerapan Value Engineering Pada Pekerjaan Pembangunan Ruang Kelas Smkn I Kuok Kecamatan Kuok**

Abdi, Dedy Purnomo Retno, Astuti Boer

**Analisa Kebutuhan Ruang Parkir Di Bandar Udara Raja Haji Fisabilillah Tanjungpinang Kepulauan Riau**

Edison Saputra, Harmiyati, Roza Mildawati

**Kajian Tarif Angkutan Penumpang Yang Layak Bus Trans Metro Pekanbaru**

Muhammad Sofwan, Jajan Rohjan, Reza M. Surlia

**Optimalisasi Waktu Dan Biaya Menggunakan Metode *Least Cost analysis* Pada Proyek Peningkatan Jalan Lingkar Kota Dumai**

Yan Putra dan Sri Hartati



Announcements Current Archives About

Search input field with Search button

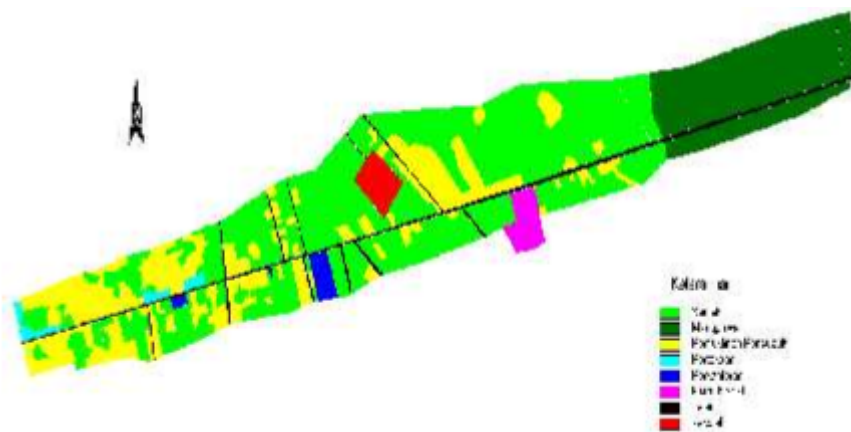
Home / Archives / Vol 17 No 1 (2017)



This issue available online since April 01, 2017. All of 11 articles in this issue.

Published: 2017-04-01

Articles

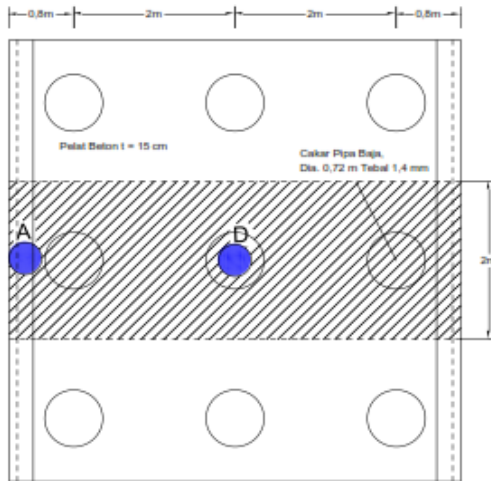


## Analisis Pengaruh Perubahan Tata Guna Lahan Terhadap Saluran Drainase Jalan Dorak Berdasarkan Pola Rencana Tata Ruang Tata Wilayah Kabupaten Meranti Tahun 2013-2032 Menggunakan Model Epa Swmm 5.0

Imam Suprayogi, Bambang Sujatmoko, Yenita Morena, Khoirul Ghofirin

1-14

[PDF \(Bahasa Indonesia\)](#)

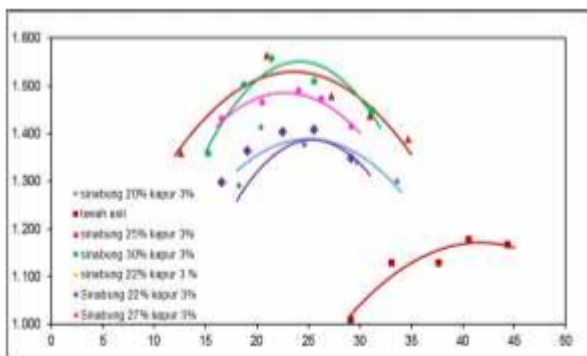


## Perhitungan Lendutan Perkerasan Jalan Sistem Cakar Ayam Modifikasi dengan Variasi Faktor Aman Pada Tambahan Modulus Reaksi Subgrade

Dinda Rosita Agustin, Anas Puri, Rony Ardiansyah

15-23

[PDF \(Bahasa Indonesia\)](#)

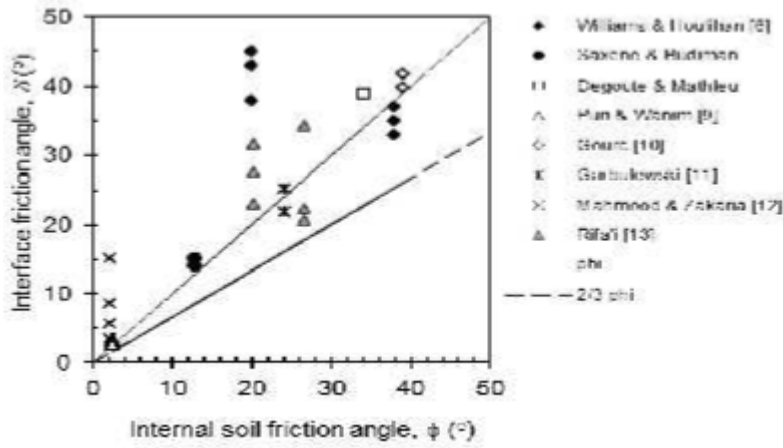


## Perbaikan Sifat Mekanis Tanah Lempung Ekspansif Menggunakan Abu Vulkanis Sinabung dan Kapur

Devi Oktaviana Latif, Ahmad Rifa'i, Kabul Basah Suryolelono

24-32

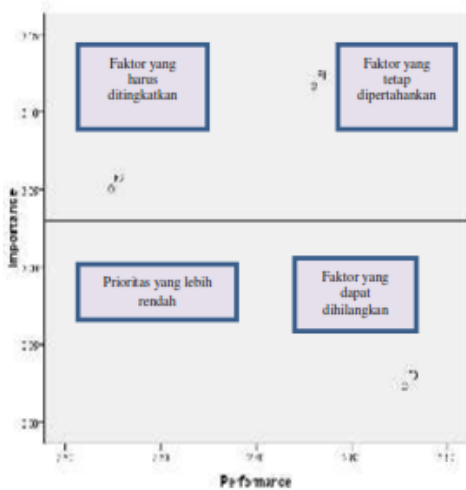
[PDF \(Bahasa Indonesia\)](#)



**The Friction Coefficient of Cohesive Soils and Geotextile: An Approach Based On the Direct Shear Test Data**

Anas Puri  
33-42

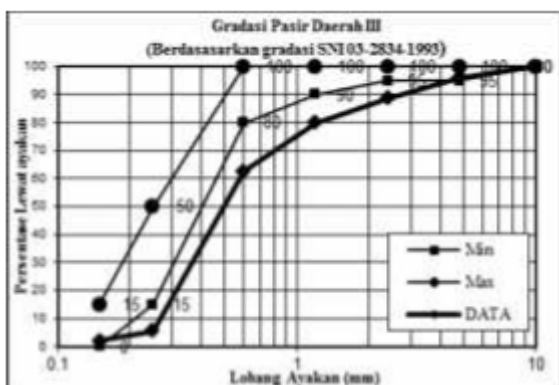
[PDF \(Bahasa Indonesia\)](#)



**Kualitas Pelayanan Trans Metro Pekanbaru Sebagai Angkutan Komuter Mahasiswa (Studi Kasus: Kelompok Mahasiswa Komuter Fakultas Teknik Universitas Islam Riau)**

Muchammad Zaenal Muttaqin  
43-51

[PDF \(Bahasa Indonesia\)](#)

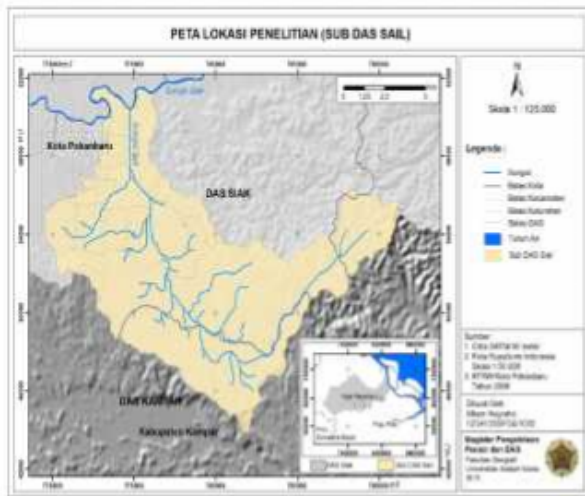


## Tinjauan Kuat Tekan Bata Ringan Menggunakan Bahan Tambah Foaming Agent

Hendra Taufik, Alex Kurniawandy, Deri Arita

52-62

[PDF \(Bahasa Indonesia\)](#)

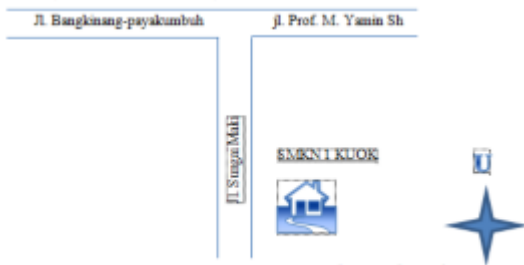


## Estimasi Debit Puncak Sub DAS Sail Menggunakan Integrasi Data Penginderaan Jauh dan Sism Informasi Geografi (SIG)

Idham Nugraha

63-70

[PDF \(Bahasa Indonesia\)](#)



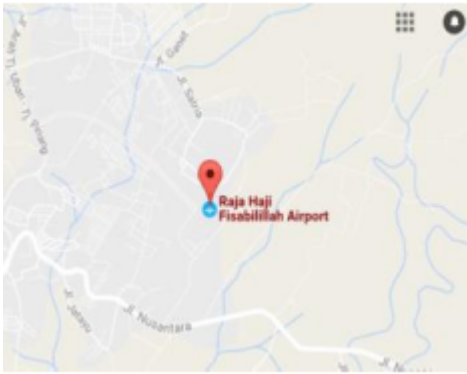
**Gambar 3.1.** Denah Lokasi

## Penerapan Value Engineering Pada Pekerjaan Pembangunan Ruang Kelas Smkn I Kuok Kecamatan Kuok

Abdi Abdi, Deddy Purnomo Retno, Astuti Boer

71-76

[PDF \(Bahasa Indonesia\)](#)

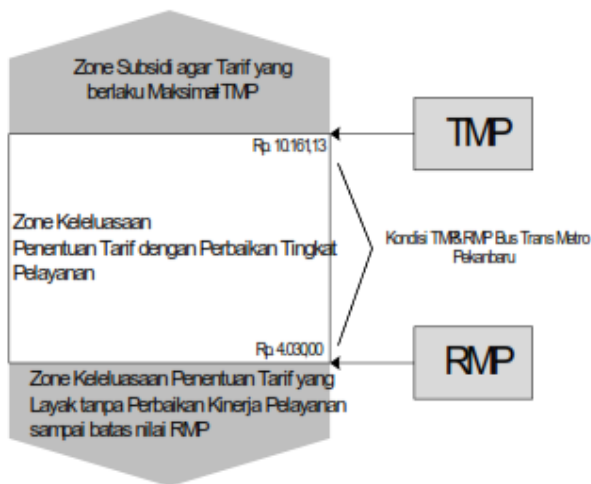


## Analisa Kebutuhan Ruang Parkir Di Bandar Udara Raja Haji Fisabilillah Tanjungpinang Kepulauan Riau

Edison Saputra, Harmiyati Harmiyati, Roza Mildawati

77-83

[PDF \(Bahasa Indonesia\)](#)

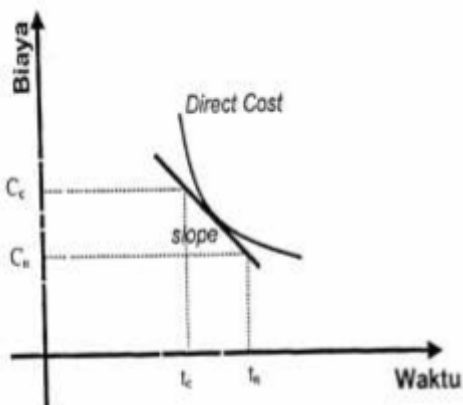


## Kajian Tarif Angkutan Penumpang Yang Layak Bus Trans Metro Pekanbaru

Muhammad Sofwan, Jajan Rohjan, Reza M Surdia

84-99

[PDF \(Bahasa Indonesia\)](#)



## Optimalisasi Waktu Dan Biaya Menggunakan Metode Least Cost Analysis Pada Proyek Peningkatan Jalan Lingkar Kota Dumai



[Announcements](#) [Current](#) [Archives](#) [About](#)

## FOCUS AND SCOPE

**Saintis** is devoted to research on civil engineering related fields including geotechnics, transports, structures, water resources and others related with civil engineering topics.

Subject areas include (but are by no means limited to):

- Structural mechanics and engineering
- Structural design and construction management
- Structural analysis and computational mechanics
- Construction technology and implementation
- Construction materials design and engineering
- Highway and transport engineering
- Bridge and tunnel engineering
- Municipal and urban engineering
- Coastal, harbour and offshore engineering
- Geotechnical and earthquake engineering
- Engineering for water, waste, energy, and environmental applications
- Hydraulic engineering and fluid mechanics
- Surveying, monitoring, and control systems in construction
- Health and safety in a civil engineering setting

Saintis is expected to publish the research result based on experiment, qualitative and quantitative method as well as literature study which may develop the quality of research and new invention in civil engineering field.

### ADDITIONAL MENU

[Editorial Board](#)

[List Of Reviewer](#)

[Focus and scope](#)

[Open access policy](#)



[Announcements](#) [Current](#) [Archives](#) [About](#)

## EDITORIAL BOARD

### Editor-in-Chief

- [Elizar](#), Scopus ID: [57189589348](#), Universitas Islam Riau, Indonesia

### Managing Editor

- [Mursyidah](#), Scopus ID: [22636226600](#), Universitas Islam Riau, Indonesia

### Editorial Member

- [Meifrinaldi](#), Scopus ID: [57200570379](#), Institut Teknologi Bandung, Indonesia
- [Reni Suryanita](#), Scopus ID: [55791179400](#), Universitas Riau, Indonesia
- [Jafril Tanjung](#), Scopus ID: [6504134079](#), Universitas Andalas, Indonesia
- [Harnedi Maizir](#), Scopus ID: [55753748400](#) Sekolah Tinggi Teknologi Pekanbaru, Indonesia
- [Maidiawati](#), Scopus ID: [36246392000](#), Institut Teknologi Padang, Indonesia
- [Sapitri](#), Scopus ID: [57201944892](#), Universitas Islam Riau, Indonesia
- [Widya Apriani](#), Scopus ID: [57200091463](#), Universitas Lancang Kuning, Indonesia

### Layout Editor

- [Bismi Annisa](#), Universitas Islam Riau, Indonesia
- [Firman Syarif](#), Universitas Islam Riau, Indonesia
- Zarnold Aziz, Universitas Islam Riau, Indonesia
- Jumeilia Armayani, Universitas Islam Riau, Indonesia

## ADDITIONAL MENU

[Editorial Board](#)





[Announcements](#) [Current](#) [Archives](#) [About](#)

## LIST OF REVIEWER

Jurnal Saintis gladly introduce our dedicated reviewer that willing to share their time and expertise to help the journal produces engineering publication of the highest caliber.

- Dr. [Betty Susanti](#), Scopus ID: [56523230500](#), Universitas Sriwijaya, Palembang, Indonesia
- Dr. [Wulfram Ervianto](#), Scopus ID: [56527120000](#), Universitas Atmajaya, Yogyakarta, Indonesia
- Dr. [Junaedi Utomo](#), Scopus ID: [57170556300](#), Universitas Atmajaya, Yogyakarta, Indonesia
- Dr. [Kurnia Hastuti](#), Scopus ID: [55748301900](#), Universitas Islam Riau, Pekanbaru, Indonesia
- Dr. [Evizal Abdul Kadir](#), Scopus ID: [50561254400](#), Universitas Islam Riau, Pekanbaru, Indonesia
- Dr. [Anas Puri](#), Scopus ID: [57193131754](#), Universitas Islam Riau, Pekanbaru, Indonesia
- Iman Adipurnama, Ph.D, Scopus ID: [57192576082](#), National Taiwan University of Science and Technology, Taiwan
- Usama Fauzijuniansyah, Ph.D, Scopus ID: [55987521500](#), University of Tokyo, Japan
- Leonardus Setia Budi Wibowo, Ph.D, Scopus ID: [56979951200](#), Universitas Widya Kartika, Surabaya, Indonesia

To volunteer to be a reviewer, send a message with your name, affiliation, and areas of expertise to [Journal Contact Email](#)

### ADDITIONAL MENU

[Editorial Board](#)

[List Of Reviewer](#)

[Focus and scope](#)

[Open access policy](#)

[Publication Frequency](#)

[Author Guideline](#)

[Peer Review Process](#)



[Announcements](#) [Current](#) [Archives](#) [About](#)

## INDEXING

- [DOAJ](#)
- [Google Scholar](#)
- [Indonesia OneSearch by Perpustakaan](#)
- [IPI Portal Garuda](#)
- [BASE \(Bielefeld Academic Search Engine\)](#)
- [OCLC Worldcat](#)
- [Crossref](#)

Every article published in this journal is assigned with Crossref DOI. Full metadata and open references registered in Crossref make research outputs easy to find, cite, link, and assess in any project world-wide. Further <https://www.crossref.org/services/metadata-delivery/>

### ADDITIONAL MENU

- [Editorial Board](#)
- [List Of Reviewer](#)
- [Focus and scope](#)
- [Open access policy](#)
- [Publication Frequency](#)
- [Author Guideline](#)
- [Peer Review Process](#)
- [Publication Ethical](#)
- [Complaints and Disclaimer](#)
- [Copyright](#)
- [License](#)
- [Contact](#)

Indexing Database

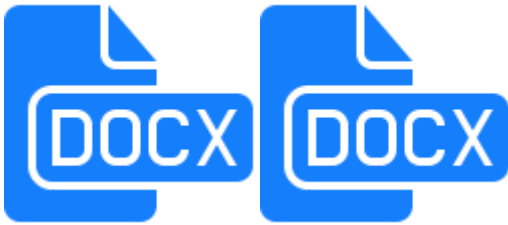


Plagiarism Checker



Reference Manager Tool





## Information

[For Readers](#)

[For Authors](#)

[For Librarians](#)

[Make a Submission](#)

[Home](#) | [Contact Us](#)



**00001747** [SAINTIS Statistic](#)

This work is licensed under a [Creative Commons Attribution-ShareAlike 4.0 International License](#).

Website Customization by: [OpenJournalSystems.com](#)

UIR | Universitas Islam Riau

## The Friction Coefficient of Cohesive Soils and Geotextile: An Approach Based On the Direct Shear Test Data

Anas Puri

Department of Civil Engineering Islamic University of Riau  
Jl. Kaharuddin Nasution 113 Pekanbaru, Indonesia-28284  
[anaspuri@eng.uir.ac.id](mailto:anaspuri@eng.uir.ac.id)

### Abstract

The soil reinforcement designing by using geotextile requires the friction coefficient of soil-geotextile interface, both granular and cohesive soils. For cohesive soils, this coefficient was usually defined by  $[\tan \omega]$ . Is this approach efficient enough or conservative? This paper presents an approach to determine the friction coefficient of soil-geotextile interface based on the empirical data from some researchers. It was used direct shear test data on cohesive soil-geotextile interfaces. Result show that the friction coefficient of soil-geotextile interface higher than the value of  $\tan \omega$ . It was also proved by the interface friction angle  $\alpha$  tend to higher than the soil internal friction angle  $\omega$ . Hence, the approach by  $[\tan \omega]$  would be yield excessive safety design, which the safety factor would be added for soils and geotextiles. The new approach in determining the interface friction coefficient was conducted by using direct relationship between interface friction coefficient and soil internal friction angle.

**Keywords:** cohesive soils, direct shear test, friction coefficient, soil-geotextile interface, geotextiles

### 1. INTRODUCTION

In the designing of soil reinforcement construction using a geotextile reinforcement material, in addition to known properties of the soil and geotextile materials, is also required behavior of the interaction between soil and geotextile. Interaction of soil and geotextile can be expressed by a coefficient called interface friction coefficient,  $\alpha$ . The problem is, not every design can be conducted the testing to determine this coefficient, so often the value of the friction coefficient of interface is taken as an approach value. Approach value of the friction coefficient of soil-geotextile interface is often used for  $\alpha = \tan \frac{3}{4} \omega$ , where  $\omega$  is the angle of soil internal friction.

However, whether such approaches can be used for all types of soil, whereas granular soil and cohesive soil having different properties. Is this approach efficient enough or conservative? Puri (Puri, 2003) has proposed a determination of the friction

coefficient of sand-geotextile interface which is relatively efficient compared with the approach that is often used. How does the friction coefficient of cohesive soil-geotextile interface, will be discussed in this paper? This study aims to determine the coefficient of friction between the cohesive soil and geotextile, and approaches in determining the friction coefficient of the cohesive soils-geotextile interface.

### 2. LITERATURE REVIEW

Geometry, roughness and stiffness of reinforcement, as well as the types and soil conditions are the main factors that influence the characteristic of friction between soil and reinforcement (Puri, 2003; Mitchell & Villet, 1987; Makiuchi & Miyamori, 1988; Puri, et al., 2003). Interaction between soil and reinforcement is generally stated as the apparent friction coefficient,  $\alpha^*$ . This coefficient can be calculated by using Equation 1.

$$\tilde{*} = \tan u \quad (1)$$

Where  $u$  is the soil-geotextile interface friction angle.

Two types of testings can be done to determine the coefficient of friction; they are the direct shear tests and pull out tests. Therefore, if both tests are not available, then the general point of friction angle between soil and geotextile ( $u$ ) is taken the approach of assuming that  $u$  is lower than the soil internal friction angle ( $w$ ), for example  $u = \tan^{-1}(\tan w)$  (Mitchell and Villet, 1987) or sometimes used  $u = w$  (Mitchell and Villet, 1987; Das, 1995), for all woven and non woven geotextiles  $\tan u = 0,60 \cdot 1,00 \tan w'$  (Williams and Houlihan, 1987), rough woven geotextiles  $\tan u = 0,80 \cdot 1,00 \tan w'$ , granular soil-solid polymer sheet  $\tan u \approx 0,6 \tan w'$  (Jewell, 1996), and  $\tan u = \frac{3}{4} \tan w$  which is generally taken  $\tan u = \tan w$  for geotextile and  $\tan u = \frac{3}{4} \tan w$  for geogrid (Suryolelono, 2000), so that in certain cases the value of these approach to be conservative.

Puri (2003), through his research by using well rounded beach sand and non woven geotextile and data from other researchers from the direct shear test, proposed the Equation 2 to predict the apparent friction coefficient at the sand-non woven geotextile interface.

$$\tilde{*} = 0,00004w'^2 + 0,0158w' \quad (2)$$

Since the first term of Equation 2 does not give significant results, and then the equation can be written as

$$\tilde{*} = 0,0158w' \quad (3)$$

Equation 3 shows the prediction of the friction coefficient only required soil internal friction angle,  $w'$ . This equation can be used in case of testing on the interface is not available.

Puri & Wanim (2003) compared the friction coefficient of Pekanbaru clay-geotextile interface with friction coefficient values calculated using Equation 2. Provided that the calculated coefficient closes to the friction coefficient of test results, both for the reinforcement in the form of woven and non woven geotextile. Nevertheless, the conclusion is still very limited because of soil used only one type.

### 3. RESEARCH METHODOLOGY

The research was conducted by using direct shear test data for the interface of cohesive soil and geotextile. Data are obtained from various sources that have been published, they are Williams and Houlihan (1987), Puri and Wanim (2003), Gource (1982), Garbulewski (1990), Mahmood and Zakaria (2000), and Rifa'i (2004). The type of shear test is the laboratory direct shear test. The steps undertaken in this study include: collection and sorting of data, analysis and interpretation, preparation of research reports, and publication of research results.

Soil internal friction angle data and soil-geotextile interface friction angle depicted in graphic form and in the same way for the angle of soil internal friction and friction coefficient of soil-geotextile interface. Tabulation of data and drawing graphs was using Microsoft Office Excel. Statistical tests performed included the  $t$  test, correlation test and regression test, using SPSS 12 application program.

### 4. RESULTS AND DISCUSSIONS

#### Soil Types and the Interface

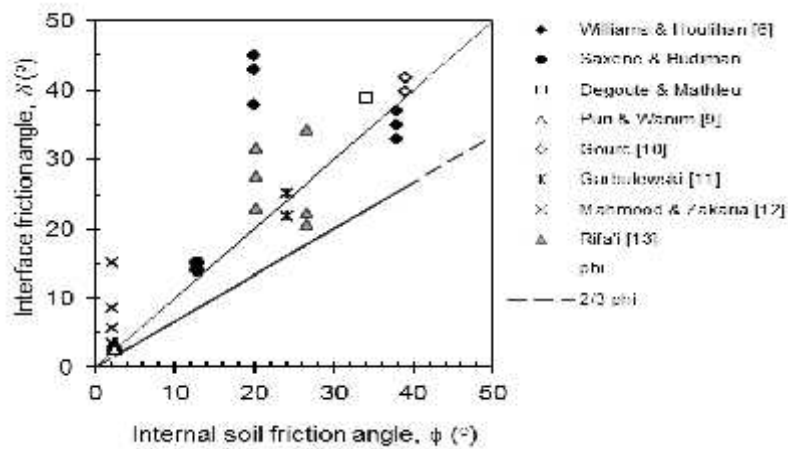
Based on data from various researchers, it can be resumed that the soil types are clay, silt, sandy clay, silty clay, and kaolinite. Woven and non woven geotextiles manufactured from various companies was used. Direct shear box size used by all

researchers are also vary from the smallest 100 mm × 100 mm up to the largest size of 3000 mm × 300 mm. Summaries of soil types and soil-geotextile interfaces are given in Appendix A.

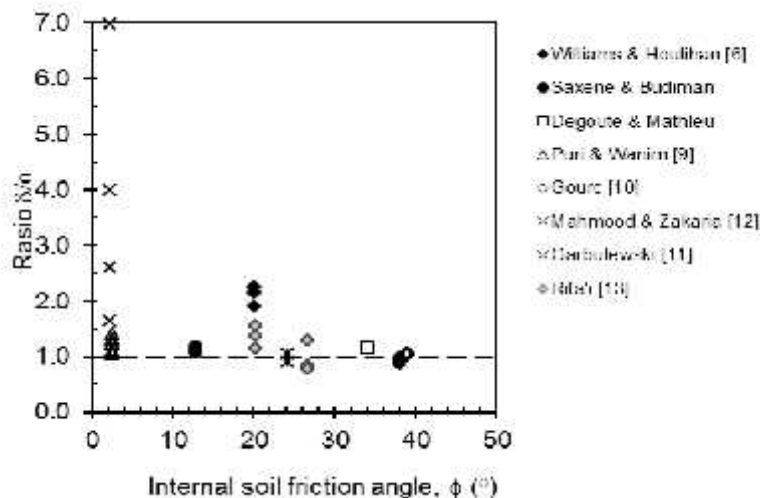
**Relationship of Interface Friction Angle and Soil Internal Friction Angle**

Recapitulation of interface friction angle is presented in Appendix B. Relationship of soil-geotextile interface friction angle  $u$  and the soil internal friction angle  $w$  is given in

Figure 1. Interface friction angle  $u$  tend to be higher than the soil internal friction angle  $w$ , as well as to the value of  $w$ . This suggests that the frictional resistance at the interface is greater than the soil one. Approach value [ $\tan u = \tan w$ ] which is commonly used will always be smaller than the real resistance. Figure 2 shows that the ratio  $u/w$  tend to be higher than 1.0. The lowest, the largest and the average value of ratio  $u/w$  are 0.87; 6.97 and 1.67 respectively.



**Figure 1.** Relationship of interface friction angle  $u$  and the soil internal friction angle  $w$



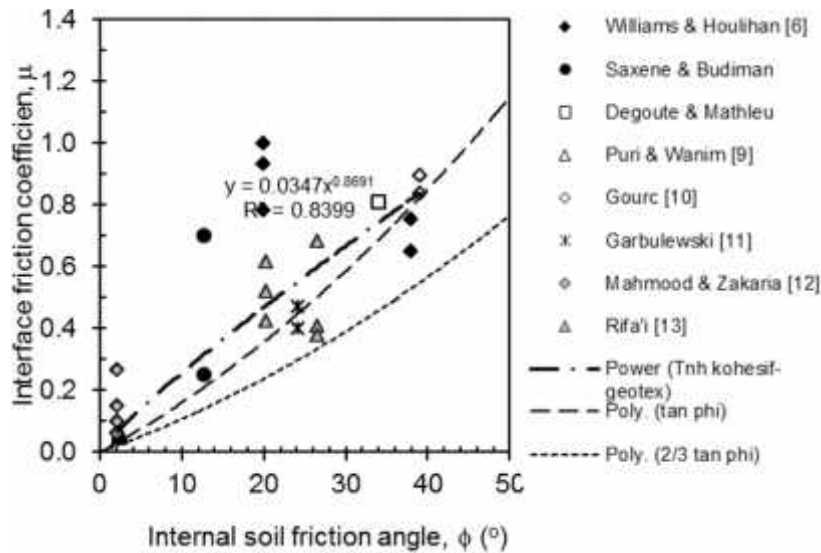
**Figure 2.** Rasio  $u/w$  vs. the soil internal friction angle  $w$

**Relationship of Interface Friction Coefficient and Soil Internal Friction Angle**

Figure 3 shows the relationship of interface friction coefficient  $\sim$  with soil internal friction angle  $w$ . Seen that the interface friction coefficients tend to be above [ $\tan$

w] and increase with increasing soil internal friction angle. Interface friction coefficient values range from 0.045 to 1.00. From the statistical tests, the soil internal friction angle has standard deviation of 14.87° with a mean of 16.08° and the average standard < 0.05.

error 3.04°. The coefficient of friction has a standard deviation of 0.35 with a mean of 0.40 and the average standard error 0.07. The *t* test results for one-sided test and two-sided test was qualified, where *t* calculation > *t* table. The probability of sig. is 0.000



**Figure 3.** Interface friction coefficient ~ vs. the soil internal friction angle *w*

Correlation of interface friction coefficient and the soil internal friction angle is significant at the level of confidence 99%. It is based on Product moment correlation test (Pearson), Spearman rank and Kendall tau. Furthermore, the relationship of ~ vs. *w* is obtained as Equation 4.

$$\sim = 0,034w^{0,869} \quad (4)$$

The Equation 4 has a correlation coefficient *R* = 0.858. It means the ~-*w* relationship is 85.8%. The coefficient of determination *R*<sup>2</sup> = 0.838 (or *R*<sup>2</sup> = 0.839 from MS Excel analysis), which means 83.8% of the variation that occurs is caused by soil internal friction angle or soil frictional resistance, while the remaining 16.2% due to something else. Based on the *F* test (Anova) was obtained *F* calculation > *F* table and the probability of sig. < 0.05. It is also found the satisfying the *t* test and

significance < 0.05. Regression models are not susceptible to heteroskedastisity interference and multicollinearity (not random), but having otocorrelation. So in general the Equation 4 is acceptable to model the relationship ~ vs. *w*.

### Interface Cohesion

Figure 4 shows the relationship of cohesive soil-geotextile interface cohesion (adhesion) *c<sub>a</sub>* with soil cohesion *c*. Seen that the interface cohesion tends to decrease with increasing soil cohesion, so that the adhesion factor will be decrease, too. The curve for approach *c<sub>a</sub>* = *c* which is often taken in the desiging is also shown. It turns out that there is trend data contrary to the approach. Presumably the failure that occurred was not on the interface of soil-geotextile but rather in the soil near the interface.



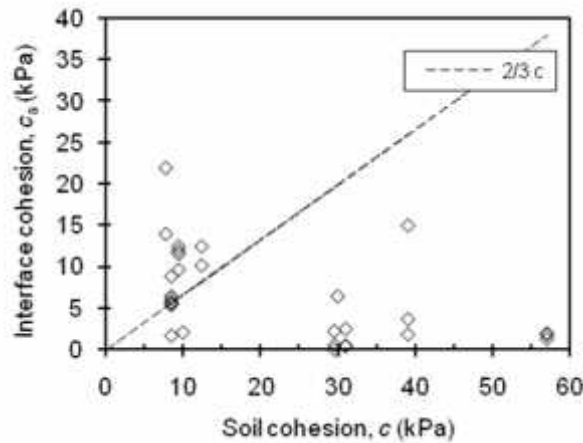


Figure 4. Relationship of  $c_a$  vs.  $c$

1

### Plasticity Index Effects to Interface Shear Strength Parameters

Shear strength parameters of the soil interface are the interface cohesion  $c_a$  and interface friction angle  $u$ . The relationship of interface friction angle  $u$  with plasticity index  $PI$  of cohesive soil is shown in Figure 5. The interface friction angle tends to decrease with increasing  $PI$ . This is due to soil with a higher  $PI$  resulted in decreasing of friction between soil particles; here the role of cohesion tends to be more dominant. This phenomenon can lead to the failure tends to occur in the soil near the interface.

Figure 6 shows the relationship of interface cohesion and  $PI$ . It appears that the interface cohesion tends to increase with increasing  $PI$ . This means that cohesion in cohesive soil is an important part to the formation of bond resistance in the interface. It is also concluded by Mahmood & Zakaria (2000). Therefore, interface cohesion should be taken into account in soil reinforcement design. Relationship  $c_a$  vs.  $PI$  in the cohesive soil-geotextile interface can be expressed as

$$c_a = 0,2316PI + 0,5773 \quad (5)$$

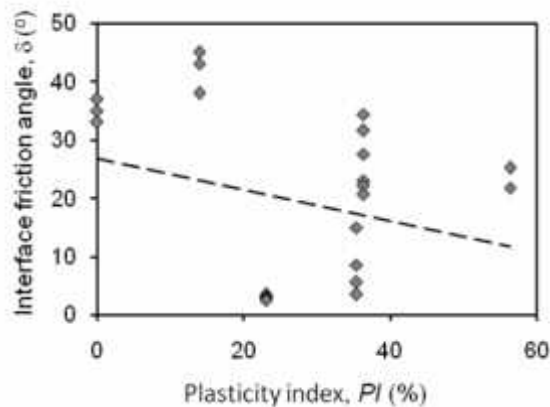
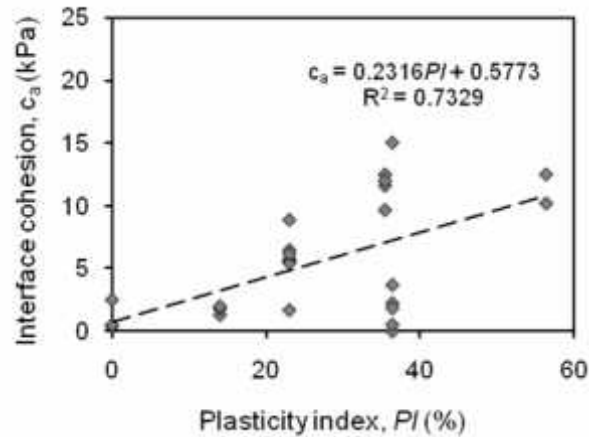


Figure 5. Relationship of interface friction angle  $u$  with plasticity index  $PI$



**Figure 6.** Relationship of cohesion of cohesive soil-geotextile interface and *PI*

## 5. CONCLUSIONS

The research results the value of the friction coefficient of cohesive soil-geotextile interface ranged from 0.045 to 1.00. Coefficient of interface friction  $\sim$  tends to be higher than  $\tan \omega$ . This is also evidenced by the value of interface friction angle  $\alpha$  tends to be higher than the soil internal friction angle  $\omega$ . Therefore, determination the interface friction coefficient with the commonly approach of  $\sim = \tan \omega$ , will produce a very safe design (conservative), considering the safety factor is also given on the parameters of the soil, and geotextile tensile strength.

Equation 4 can be used to estimate the friction coefficient of cohesive soil-geotextile interface in case there is no available testing of the interface. The proposed approach in determining the friction coefficient of cohesive soil-geotextile interface should be tested with numerical analysis in a case of soil reinforcement structure using geotextile.

## ACKNOWLEDGEMENT

The manuscript is part of the research has been funded by the Research Institute of the Islamic University of Riau, Pekanbaru.

## REFERENCES

- Das, Braja M., 1995, *Principles of Foundation Engineering*, PWS-Kent Publishing, New York.
- Gourc, Jean-Pierre, 1982, *Quelques Aspects du Comportement des Geotextiles en Mecanique des Sols, These, Docteur es-sciences*, Institut de Recherches Interdisciplinaires de Geologie et de Mecanique, L'Institut National Polytechnique de Grenoble.
- Garbulewski, K., 1990, Direct Shear and Pullout Frictional Resistance at the Geotextiles-Mud Interface, *Proc., 4<sup>th</sup> Int. Conf. on Geotextiles, Geomembranes and Related Products*, Vol. 2, Den Hoedt (ed), Balkema, Rotterdam, pp.737-742.
- Jewell, R.A., 1996, *Soil Reinforcement with Geotextiles*, CIRIA, London.
- Mahmood, A.A., and Zakaria, N.A., 2000, A Study on the Coefficient of Friction of Soil/Geotextile Interfaces, *EJGE*, paper 0012.
- Makiuchi, K. and Miyamori, T., 1988, Mobilisation of Soil-Geofabric Friction, *Intrn. Geotechnical Symp. on Theory and Practice of Earth Reinforcement*, Yamanouchi dkk. (ed), Balkema, Rotterdam, pp. 129-134.
- Mitchell, J.K. and Villet, W.C.B., 1987, *Reinforcement of Earth Slopes and*

- Embankments, *National Cooperative Highway Research Program Report 290*, Transportation Research Board, Washington D.C.
- Puri, A., 2003, Determination of Interaction Between Sand and Geotextile Using Triaxial Compression Testing, *Magister Theses*, Civil Engineering Graduate Program of Gadjah Mada University, Yogyakarta.
- Puri, A., and Wanim, A., 2003, Frictional Resistance of Pekanbaru Clay-Geotextile Interface, *J. Saintis*, Vol.6 No.2, Pekanbaru, pp. 91-98.
- Puri, A., Hardiyatmo, H.C. and Suhendro, B., 2003, Behavior and Mobilization of Sand-Non Woven Geotextile Interface Friction on Conventional Direct Shear Testing, Rahardjo et.al. (eds), *Proceeding of the 6th Indonesian Geotechnical Conference and the 7th Annually Meeting of Indonesian Geotechnical Engineers*, HATTI, Jakarta, 11-13 Agustus 2003, pp 239-247.
- Rifa'i, A., 2004, Behavior of Soil-Geotextile Interaction on the Shear Strength Parameters, *Jurnal Forum Teknik*, Jurusan Teknik Sipil UGM.
- Suryolelono, K.B., 2000, *Geosintetik Geoteknik*, Nafiri, Yogyakarta.
- Williams, N.D., and Houlihan, M.F., 1987, Evaluation of Interface Friction Properties Between Geosynthetics and Soils, *Proc. Geosynthetics '87 Conference*, New Orleans, USA, pp.616-627.

## The Friction Coefficient of Cohesive Soils and Geotextile: An Approach Based On the Direct Shear Test

### Appendix A. Recapitulation of Cohesive Soil-Geotextile Interfaces

No.	Researchers	Description of Interface Area and Others	Type of Geotextile	$\delta$ (°)	$c_a$ (kPa)	Soil Description
1	Williams & Houlihan (1987)	Area 30,5 cm x 30,5 cm. Soil two sides,	Typar 3401	38	1,3	Gulf Coast clay
			Trevira 1155	45	1,8	42%, PL=28%, $w_{opt}=15,5\%$ .
			Nicolon 900-M	43	2,0	
			Typar 3401	33	0,4	Silt Glacial till (M)
			Trevira 1155	37	0,5	PL=17%, $w_{opt}=7$
			Nicolon 900-M	35	2,5	
2*	Saxene & Budiman	Area 25 cm x 25 cm. Soil two sides, depth 1,27-7,6 cm displacement rate 0,75 mm/min normal stress 72-288 kPa.	Celenese 800X	14	14	45%DS, 5% ber
			Monsanto C-34	15	22	kaolonite, saturat
3*	Degoute & Mathleu	Area 3 x 0,3 m, soil depth 15cm, normal stress 200-1200 kPa, soil one side	Geotextile	39		Sandy clay, PL=
4	Puri & Wanim (2003)	Area 10 cm x 10 cm soil thickness 1,0 cm, soil one side. Displacement rate 0,25 mm/menit	Non woven:			Pekanbaru clay,
			Polyfelt TS 30	3,5	5,73	LL= 68,56%; PL=
			Polyfelt TS 50	3,22	5,54	PI= 23%, $G_s = 2$
			Polyfelt TS 60	3	6,47	colloid (particle <
			Polyfelt TS 70	3,03	8,88	very fine particle
			Woven: Hate Reinfox			(<0,001 mm) 35
			HT385-130XT	2,71	1,69	
			HT385-185XT	2,56	5,43	
5	Gourc (1982)	Area 40 cm x 25 cm. Normal stress 2-30 kPa. Soil two sides, depth 2x10 cm	BD 340	41,8	6,46	saturated clay (u
			BD 340	39,9	2,09	

**Appendix A. Continued**

6	Garbulewski (1990)	Area 100mm x 100mm, soil one side, rate 0,1 mm/min conventional	Road geotextile-1000 (needle punched polypropylene)	$\mu =$ 0,47 (25,2)	10,2	Mud (organic matter) as silty clay with 77% silt, 21% clay matter, $w_n=54\%$ PL=33,7%, PI=5% $s_u=12$ kPa, $\gamma=15$
			Filtration geotextile J/Sm 5214 (polypropylene & polyamid)	$\mu =$ 0,4 (21,8)	12,5	
7	Mahmood & Zakaria (2000)	Area 10 cm x 10 cm soil one side. Displacement rate 1,27 mm/menit.	Non woven needle punched:			Organic clay, $\gamma =$ $w_n=115,41\%$ ; organic content 14,70%. PI = 35,4%; Unc Gs = 2,54
			TS550	5,6	12,5	
			TS600	8,6	11,6	
			TS700	14,98	9,66	
8	Rifa'i (2004)	Standard direct shear	Soaked condition:			Wonosari clay, $\gamma =$ $\gamma = 1,775$ g/cm3 LL= 72,01%; PL= 36,36%. OM MDD=1,292; fine
			Non-woven TS600	27,5	2,24	
			Non-woven R206	31,6	0	
			Woven BW250	23,0	0,53	
			Unsoaked condition:			
			Non-woven TS600	34,3	1,85	
Non-woven R206	22,2	15,0				
			Woven BW250	20,7	3,69	

\* see William & Houlihan (1987)

The Friction Coefficient of Cohesive Soils and Geotextile: An Approach Based On the Direct Shear Test Data (Anas Puri)

**Appendix B. Soil Internal Friction Angle and Interface Parameters**

No.	Researchers	Type of Interface	Friction angle		Friction coefficient, $\mu$
			Soil internal, $\phi'$ ( $^\circ$ )	Interface, $\delta$ ( $^\circ$ )	
1	Williams & Houlihan (1987)	Gulf Coast clay-Typar 3401	20	38	0,781
		Gulf Coast clay-Trevira 1155	20	45	1,000
		Gulf Coast clay-Nicolon 900-M	20	43	0,933
		Silt Glacial till-Typar 3401	38	33	0,649
		Silt Glacial till-Trevira 1155	38	37	0,754
		Silt Glacial till-Nicolon 900-M	38	35	0,700
2*	Saxene & Budiman	Kaolinite-Celenese 800X	12,8	14	0,249
		Kaolinite-Monsanto C-34	12,8	15	0,268
3*	Degoute & Mathleu	Sandy clay-Geotextile	34	39	0,810
4	Puri & Wanim (2003)	Pekanbaru clay-Polyfelt TS 30	2,46	3,5	0,061
		Pekanbaru clay-Polyfelt TS 50	2,46	3,22	0,056
		Pekanbaru clay-Polyfelt TS 60	2,46	3	0,052
		Pekanbaru clay-Polyfelt TS 70	2,46	3,03	0,053
		Pekanbaru clay-Hate Reinfox HT385-130XT	2,46	2,71	0,047
		Pekanbaru clay-Hate Reinfox HT385-185XT	2,46	2,56	0,045
		Pekanbaru clay-Hate Reinfox HT385-250XT	2,46	2,62	0,046
5	Gourc (1982)	Clay-BD 340	39	41,8	0,894
		Clay-BD 340	39	39,9	0,836
6	Garbulewski (1990)	Silty clay-Road geotextile-1000	24,2	25,2	0,471
		Silty clay-Filtration geotextile J/Sm 5214	24,2	21,8	0,400
7	Mahmood & Zakaria (2000)	Organic clay-Non woven TS550	2,15	5,6	0,098
		Organic clay-Non woven TS600	2,15	8,6	0,151
		Organic clay-Non woven TS700	2,15	14,98	0,268
		Organic clay-Non woven TS750	2,15	3,5	0,061
8	Rifa'i (2004)	Wonosari CH clay-Non woven TS600	20,20	27,52	0,521
		Wonosari CH clay-Non woven R206	20,20	31,6	0,615
		Wonosari CH clay-Woven BW250	20,20	23,04	0,425
		Wonosari CH clay-Non woven TS600	26,59	34,34	0,683
		Wonosari CH clay-Non woven R206	26,59	22,23	0,409
		Wonosari CH clay-Woven BW250	26,59	20,66	0,377

\* See William & Houlihan (1987)