

# Setting Faculty Up for Success:

## Unlocking and Using Resources to Support Faculty Development and Career Advancement



**Dr. Lisa K. Hanasono (she/her/hers)**

Associate Professor • CFE Faculty Associate • [LisaKH@bgsu.edu](mailto:LisaKH@bgsu.edu)



# Introductions

**To Do List:**

- ✓ Build Awareness
- ✓ Connect
- ✓ Cultivate

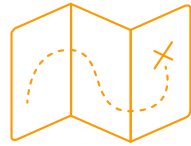
- 1. Name\***
- 2. Institution(s)**
- 3. 1 Growth Area**



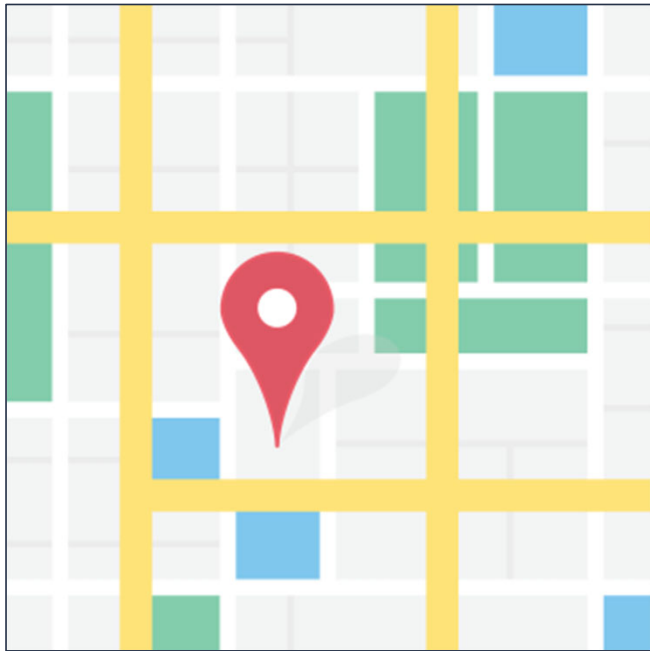
## **Dr. Lisa Hanasono (she/her/hers)**

Associate Professor in the School of Media & Communication  
Affiliated Faculty Member of the American Culture Studies Program &  
Women's, Gender, and Sexuality Studies  
CFE Faculty Associate

**[LisaKH@bgsu.edu](mailto:LisaKH@bgsu.edu)**



# Overview



- I. **Common Challenges**
- II. **Unlocking & Using Resources**
- III. **Your Game Plan**



**What are some common challenges that faculty face?**



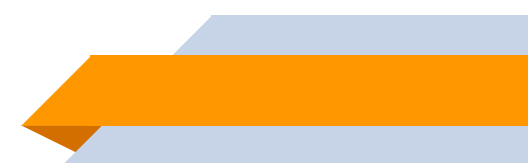
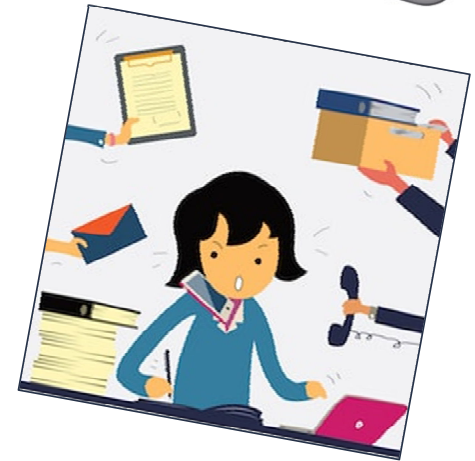
# Common Challenges



## ■ Challenges

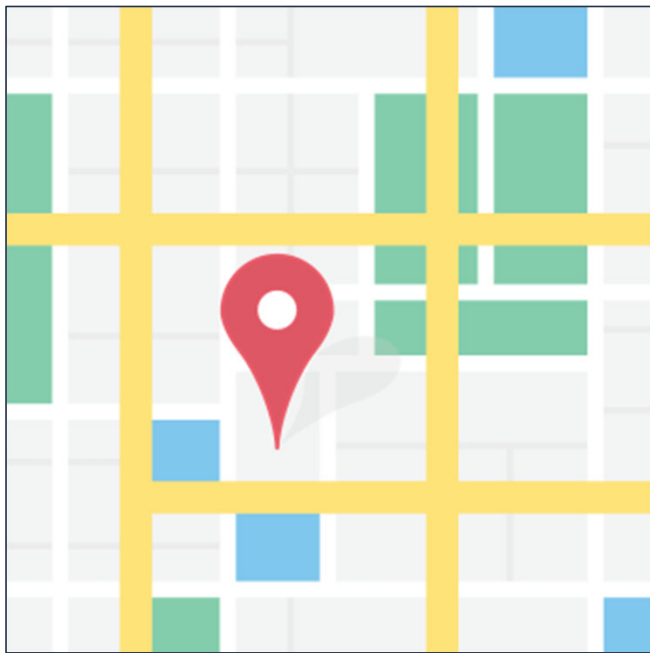
- ▶ Limited amount of time, energy, & resources
- ▶ Varying preparation: Teaching, Research, Service
- ▶ Varying amounts of privilege and power
- ▶ Navigating the hidden curriculum

- ## ■ Good News:
- You are not alone. And there are resources and people to support you!





# Overview



- I. **Common Challenges**
- II. **Unlocking & Using Resources**
- III. **Your Game Plan**



# The NCFDD



- An “independent professional development, training, and mentoring community for faculty members, postdocs, and graduate students” (NCFDD, 2021, para. 1)
- Aims to support your research productivity, professional development, and career advancement
- Website: [www.facultydiversity.org](http://www.facultydiversity.org)







# Member Resources: An Overview

## Learn

- Core Curriculum
- **Guest Webinars**
- **Multi-Week Courses**
- “Professor-ing” Podcast
- Resources & Referrals
- Monday Motivators

## Connect & Produce

- **14-Day Writing Challenge**
- **Buddy Matching**
- Discussion Forums
- Dear Mentors Advice Column

## Advance

- **Faculty Success Program\***
- Post-Tenure Pathfinders\*
- WriteNow Program\*
- Dissertation Success Curriculum

# The NCFDD's Core Curriculum



# Sample Topics: Guest Webinars & Courses

## ■ **Building a Publishing Pipeline**

- Crafting Winning Book Proposals
- Negotiating an Academic Book Contract

## ■ **How to Write an Article in No Time**

- Grant writing

## ■ **Teaching in No Time**

- How to Work with Academic Editors
- How to Negotiate for Success
- Practical Tips for Publishing Scholarly Articles
- Moving from Associate to Full Prof.

## ■ **Making the Most of your Sabbatical**

- Cultivating Your Network Virtually

## ■ **How to Be a Strong Sponsor & Advocate for Faculty**

- Conference Networking
- Protecting Your Boundaries and Well-Being
- Five Secrets to a Super Productive Semester
- How to Develop & Sustain Health Partnerships with Co-Authors
- Building & Leading Successful Research Teams

## ■ **Supporting Faculty During & After the Pandemic**

- Re-Thinking Mentoring
- Micro-Aggressions, Micro-Resistance, & Ally Development in the Academy
- Creating a Harassment-Free Lab

## ■ **Overcoming the Imposter Syndrome**

- Valuing Faculty Work that Promotes Equity

## ■ **Parenting & Productivity**



## BGSU Events

- **NCFDD Webinar Screenings & Discussions**

- For more information, visit [www.bgsu.edu/ncfdd](http://www.bgsu.edu/ncfdd)



The Center for  
Faculty Excellence

**CFE**  
BGSU.



## Additional Teaching Resources



- BGSU's Center for Faculty Excellence
- Equity Unbound: Resources on Inclusive & Active Learning
- The K. Patricia Cross Academy: Teaching Techniques Video Library
- The Lilly Conference: Evidence-Based Teaching & Learning
- The University of New Mexico's Mentoring Institute
- Doug Shaw's *OK Zoomer* Workshop





# Leadership Resources



- The HERS Institute
- The MAC Academic Leadership Development Program
- The American Council on Education's (ACE) Fellows Program
- ASHE Academic Leaders Workshop
- The ARC Network's Ensuring Equity in STEM Series
- ...and more! (Consult your discipline and profession organizations, too.)





# Career Advancement Resources



- The National Center for Faculty Development and Diversity
- Purdue University's Conference for Assistant Professors
- Purdue University's Conference for Associate Professors
- *The Professor Is In*
- *The Chronicle of Higher Education's* Virtual Events
- Your University and College's Events and Policies



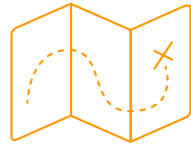
# Podcasts



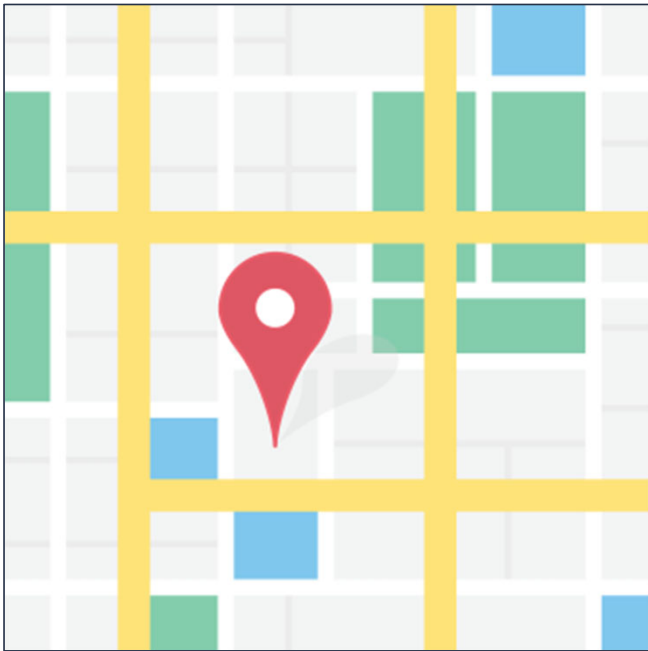
- Professor-ing with Badia Ahad and Anthony Ocampo
- Lecture Breakers
- Teaching in Higher Ed
- Tea for Teaching
- Faculty Focus Live
- The Professor Is In
- You've Got This
- BG Ideas Podcast (Institute for the Study of Culture & Society)







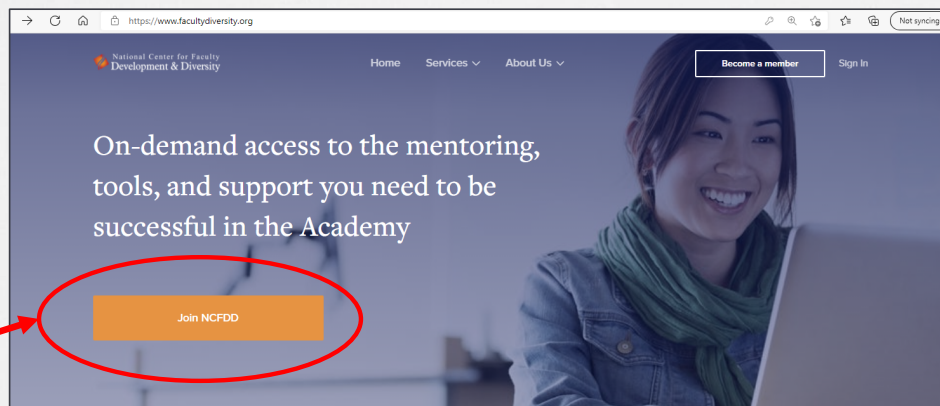
# Overview



- I. **Common Challenges**
- II. **Unlocking & Using Resources**
- III. **Your Game Plan**

# 1. Activate Your Membership

- > Visit [www.facultydiversity.org](https://www.facultydiversity.org)
- > Click “Join NCFDD” and select BGSU
- > Register and get started!

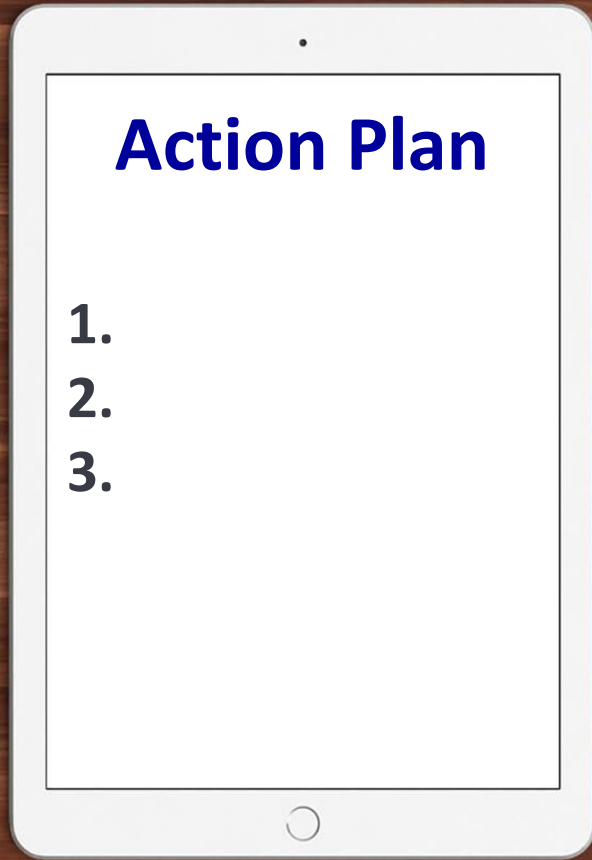


NCFDD Email: [Help@FacultyDiversity.org](mailto:Help@FacultyDiversity.org)



**To Do List:**

- ✓ Build Awareness
- ✓ Connect
- ✓ Cultivate





# Thank You!

**Lisa Hanasono, Ph.D. (she/her/hers)**

Associate Professor in the School of Media & Communication  
Affiliated Faculty Member of the American Culture Studies Program &  
Women's, Gender, and Sexuality Studies  
CFE Faculty Associate

**[LisaKH@bgsu.edu](mailto:LisaKH@bgsu.edu)**

