

*Egypt J Pediatr Allergy Immunol 2005; 3(1): 2-9.*

## Review article

# Diagnostic inflammatory markers for bronchial asthma

**Gehan A. Mostafa**

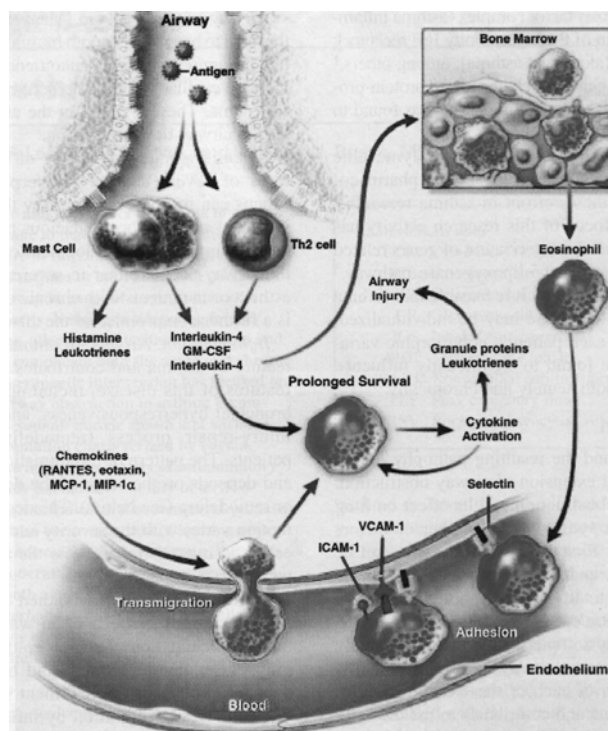
*Assistant Professor of Pediatrics, Ain Shams University, Cairo.*

## Role of inflammation in the pathophysiology of bronchial asthma

Airway inflammation is a characteristic feature of asthma. It contributes significantly to many features of this disease, including airflow obstruction, bronchial hyperresponsiveness, and the initiation of the injury-repair process (remodeling) found in some patients<sup>1</sup>.

The inflammation that occurs in asthma can be broken-down into 3 stages. First, the acute response

(edema, smooth muscle contraction and increased mucus production) which is completed within a few hours. Second, a residual stimulus leads to the chronic phase (epithelial cells denudation and the influx of inflammatory cells into the airway). Finally, chronic airway remodeling (irreversible structural changes and progressive loss of pulmonary function)<sup>2</sup>. The mechanism that initiates airway inflammation is shown in figure (1).



GM-CSF = granulocyte macrophage-colony stimulating factor; ICAM = Intercellular adhesion molecule; VCAM = vascular cell adhesion molecule; MCP = Monocyte chemoattractant protein; MIP = monocyte inhibitory protein.

**Figure 1.** The mechanism that initiates airway inflammation in bronchial asthma. In sensitized individuals antigen interaction with mast cell-bound, specific-IgE antibody results in release of preformed (histamine) and generated (leukotrienes) mediators along with cytokines [interleukins-4 and -5 and GM-CSF]. These various compounds can induce localized inflammatory cell influx and activation through the upregulation of various chemokines and adhesion molecules and recruitment of bone marrow cells (e.g., eosinophils). Quoted from Lemanske and Busse (2003)<sup>1</sup>.

## Tests for assessing airway inflammatory markers of bronchial asthma

Ideally, a test for airway inflammation should be non-invasive, safe, simple to perform, inexpensive and should correlate with both indices of inflammation obtained using the gold standard tests

(bronchoalveolar lavage “BAL” and bronchial biopsy), and other measures such as pulmonary function, disease severity and bronchial reactivity<sup>3</sup>.

It is now possible to measure airway inflammation using non-invasive tests as induced sputum, serum measurements, exhaled breath

testing e.g. nitric oxide and volatile molecules in the liquid phase of breath “breath condensate” and even urinary measurements<sup>4</sup>. Sputum markers tend to be more sensitive than blood when assessing airway inflammation<sup>5</sup>.

### **Inflammatory markers for bronchial asthma**

No single parameter can accurately classify all individuals. Assessment of multiple parameters is necessary to categorize asthma clinical status accurately<sup>6</sup>. Inflammatory markers for bronchial asthma include:

- I. Inflammatory cells
- II. Cytokines and chemokines
- III. Lipid inflammatory mediators
- IV. Immunoglobulins (E, D)
- V. Anaphylatoxic complement C<sub>3a</sub>, C<sub>5a</sub>
- VI. Oxidants (including markers of exhaled breath) and antioxidants
- VII. Adhesion molecules
- VIII. Neurotrophins and neuropeptides
- IX. Endothelins
- X. Angiogenic and antiangiogenic factors
- XI. Matrix metalloproteinases
- XII. Activated protein C and plasmin system

#### **I) Inflammatory cells**

*Eosinophils (number, granular proteins and apoptotic markers):*

Eosinophilia in peripheral circulation and airways is a characteristic feature of asthma<sup>7</sup>. Hypodense eosinophils (eosinophils with lower density and greater number of immunoglobulin receptors) better reflect the severity of asthma than the mere count of peripheral blood eosinophils as they are metabolically more active and proinflammatory than the normodense eosinophils<sup>8</sup>. There is a high risk of exacerbation in subjects with blood eosinophilic count > 400/cubic mm<sup>9</sup>.

Eosinophil cationic protein (one of the eosinophil granular proteins) released upon eosinophil activation has an essential role in the pathogenesis of airway hyperresponsiveness due to its cytotoxic effect on airway epithelial cells. It was detected in bronchial biopsy specimens and elevated in BAL, sputum and peripheral blood specimens<sup>10</sup>.

Of the 4 basic eosinophil granule proteins, eosinophilic protein X (EXP) is the only one that can be accurately measured in the urine. It has been shown to correlate well with eosinophil activation and serum eosinophilic cationic protein level. Urinary EXP level reflects the presence of atopy and might be useful for monitoring the progression of allergic disease<sup>11</sup>.

Recently, El-Gamal et al.<sup>12</sup> reported overexpression of sputum eosinophils and Bcl-2+ (antiapoptotic marker) eosinophil percentages in asthmatic patients with acute exacerbation than controls and demonstrated a positive correlation to disease severity.

*T lymphocytes:*

Numerous studies have documented elevated numbers of T cells within BAL fluid and within the epithelium and submucosa of asthmatic patients<sup>13</sup>. Numerous studies reported increased expression of T-helper cell activation markers as CD45RA, CD45RO, CD45RA<sup>+</sup>RO<sup>+</sup> and CD25 in peripheral blood mononuclear cells of children with atopic asthma<sup>14</sup> as well as CD80 and CD86<sup>15</sup>.

*Basophils:*

Blood basophil counts are often increased in asthmatic patients. Basophils have been also reported in sputum<sup>16</sup> and bronchial biopsy specimens<sup>17</sup>. Interestingly, basophils of asthmatic children showed increased spontaneous release of LTC<sub>4</sub> during exacerbation and persisted even after subsidence of the attacks suggesting an in vivo activation state of basophils<sup>18</sup>.

*Platelets:*

Platelet factor 4 and B-thromboglobulin are sensitive indices of platelet activation. They are closely related to clinical improvement, severity and response to therapy in asthmatic children<sup>19</sup>.

*Mast cells:*

Increased number of mast cells has been described in the bronchial epithelium using electron microscopy and BAL of allergic patients with asthma. Increased concentration of tryptase (a marker of mast cell degranulation) has been found in BAL of asthmatics<sup>20</sup>.

#### **II) Cytokines and chemokines (figure 2)**

The proteins synthesized and secreted by T, B and natural killer (NK) cells, with which they interact are referred to as cytokines. They are subdivided into interleukins, interferons, colony stimulating factors and other cytokines<sup>21</sup>.

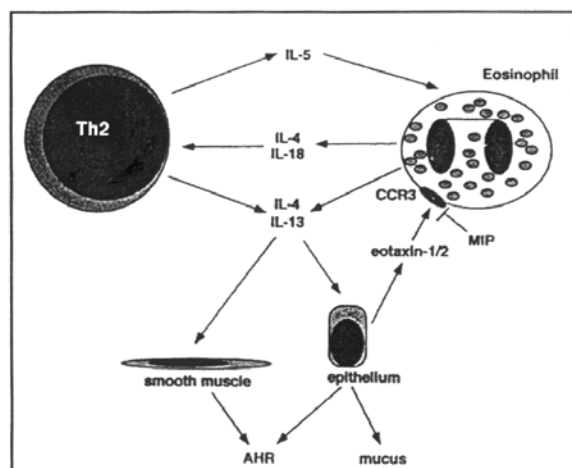
The initial indication for cytokine involvement in the pathogenesis of asthma came from studies performed in the early 1990s showing that atopic asthma was associated with local T<sub>H</sub>2 cytokine expression (IL-3, IL-4, IL-5, and GM-CSF). They were upregulated in asthmatic patients relative to control subjects and their receptors were identified on the surface of inflammatory cells<sup>(22)</sup>. They can prolong the survival of the allergic effector cells because of delayed apoptosis<sup>23</sup>.

Chemokines are a large group of chemotactic cytokines that have been divided into four groups,

designated CXC, CC, C and CX3C, depending on the spacing of conserved cytokines (where X is an amino acid). The CXC chemokines mainly target neutrophils and lymphocytes whereas the CC chemokines target a variety of cell types, including macrophages, eosinophils, basophils and dendritic cells<sup>24</sup>. Forty-seven chemokines and 18 chemokine receptors have been identified. Many of the chemokine receptors can bind more than one ligand allowing extensive overlap and redundancy of chemokine function<sup>25</sup>.

Chemokines, particularly the eotaxin subfamily, have emerged as cytokines likely to be important in the regulation of allergic inflammation. They have an essential role in regulating leucocyte recruitment, basophil histamine release,  $T_H1/T_H2$  function and tissue remodeling (including fibrosis and angiogenesis). Several chemokines appear to have potent effects in lung functions such as airway hyperresponsiveness<sup>26</sup>.

The main stimuli for secretion of chemokines are the early signals elicited during innate immune responses (e.g. bacterial products, viral infection and proinflammatory cytokines such as IL-1 and TNF- $\alpha$ )<sup>27</sup>. Thus, chemokines provide an important link between early innate immune responses and adaptive immunity (by recruiting and activating T cells)<sup>28</sup>.



IL = Interleukin; MIP = macrophage inflammatory protein; CCR = CC chemokine receptor; AHR = airway hyperresponsiveness.

**Figure 2.** Chemokine/cytokine interactions in asthma (Quoted from Zimmermann et al., 2003)<sup>26</sup>.

### III) Lipid inflammatory mediators

The lipid mediators, leukotrienes (LTs), prostaglandins and platelet-activating factor, play an

important role in the complex inflammatory process of airways in bronchial asthma<sup>29</sup>.

LTC<sub>4</sub> and LTD<sub>4</sub> are 1000 times more potent bronchoconstrictors than histamine. T helper type 2 cytokines upregulate LTs synthesis. LTs upregulate type 2 cytokine expression and decrease type 1 cytokine expression<sup>30</sup>. A significant increase in sputum LTs in children with asthma was demonstrated and paralleled the severity of asthma<sup>31</sup>.

### IV) Immunoglobulins (Igs)

*IgE:*

For IgE synthesis a complex series of interactions and signals between B and T cells is required<sup>32</sup>. IgE levels are often raised in allergic diseases and grossly elevated in parasitic infestations. When assessing children for presence of atopic disease, a raised IgE may aid in the diagnosis<sup>33</sup>. However, a significant number of allergic individuals have normal or low IgE concentrations. Indeed, low levels of serum IgE may be more useful in excluding atopic disease than elevated levels in confirming diagnosis, although patients with low IgE can have atopy. Increased total IgE levels during infancy, with no evidence of parasitic infestation, suggests the likelihood of subsequent development of atopic diseases<sup>23</sup>.

*IgD:*

IgD level may be elevated in atopic diseases but there is yet no definite explanation for the high levels of IgD. Surface IgD was found to protect resting B-cells from deletion allowing them to initiate an immune reaction to antigens<sup>34</sup>.

### V) Anaphylatoxic complement C<sub>3a</sub>, C<sub>5a</sub>

The complement system is a vital link between innate and adaptive immunity. Complement anaphylatoxins C<sub>3a</sub> and C<sub>5a</sub> are potential effectors of the type 1 hypersensitivity reactions. C<sub>3a</sub> and C<sub>5a</sub> contribute in asthma pathogenesis. Their receptors are expressed in airway epithelial cells and smooth muscles<sup>35,36</sup>.

### VI) Oxidants and antioxidants

Many studies suggest that markers of oxidative stress (increased exposure to oxidants and/or decreased antioxidant capacities) are increased in children and adults with asthma, not only in their lungs but also in the circulation<sup>37</sup>.

*Markers in exhaled breath (nitric oxide and others)*

Nitric oxide (NO) was originally recognized as an environmental pollutant that destroys the ozone layer. However, it is now recognized as an

important physiological mediator<sup>38</sup>. The highest NO production is from macrophages and airway epithelial cells. NO is synthesized by the oxidation of L-arginine by NO synthetase enzyme. In the lungs, NO acts as a vasodilator, a non adrenergic non-cholinergic neurotransmitter and an important mediator in the inflammatory response<sup>39</sup>. Exhaled NO is a non-invasive test that measures airway inflammation. It correlates with peripheral blood eosinophils and serum ECP<sup>40</sup>.

Several other inflammatory biomarkers have been identified in exhaled air or breath condensate which include; aldehyde, glutathione, carbon monoxide, hydrogen peroxide, ethane and other volatile and non volatile compounds<sup>41</sup>.

### VII) Adhesion molecules

Leukocyte / endothelial cell adhesion molecules are essential mediators of both immune and inflammatory responses. T cell adhesion molecules are classified in three families. These are the selectins (E-selectin, L-selectin and P-selectin), immunoglobulin-like molecules (ICAM-1, ICAM-2, ICAM-3, VCAM-1, PECAM-1 and MadCAM-1) and integrins (CD29/CD49, CD18/CD11 and CD61/CD41)<sup>42</sup>.

### VIII) Neurotrophins and neuropeptides

Neurogenic inflammation may be initiated by activation of sensory nerves by inflammatory mediators, irritants, allergens and infections<sup>43</sup>.

Neurotrophins are a family of peptides that promote survival, growth and differentiation of neurons. They may also influence the function of non-neuronal cell types, including immune cells. They include nerve growth factor, brain derived neurotrophic factor, neurotrophin 3 and neurotrophin 4/5<sup>44</sup>.

The traditional cellular sources of neurotrophins under physiological conditions are primarily nerve-associated cells such as glial cells, Schwann cells or fibroblasts and neurons themselves. In inflammatory processes, neurotrophins are also produced by a wide range of hematopoietic cells including mast cells, macrophages, T cells and airway epithelium<sup>45</sup>.

Neuropeptides are small amino acid components released from sensory nerves and also from inflammatory immune cells such as monocytes, dendritic cells, eosinophils and mast cells. Neuropeptides such as substance P, neurokinin A and calcitonin gene-related peptide (CGRP) may amplify the inflammatory process through increasing plasma exudation, mucus secretion and

both recruitment and activation of inflammatory cells<sup>46</sup>.

### IX) Endothelins (ETs)

Human endothelin family comprises three 21-amino acid peptides. All three ET isopeptides are potent contractile agonists of human airway. ETs are synthesized by endothelial and epithelial cells and act in a paracrine fashion on nearby smooth muscle or connective tissue<sup>47</sup>.

### X) Angiogenic and antiangiogenic factors

Angiogenesis is regulated by a balance of angiogenic and antiangiogenic factors. Induced sputum from asthmatic subjects revealed imbalance between vascular endothelial growth factor "VEGF" (angiogenic factor) and endostatin (antiangiogenic factor) levels<sup>48</sup>. Angiogenesis is an essential component identified in airway remodeling of bronchial asthma<sup>1</sup>.

### XI) Matrix metalloproteinases (MMPs)

Matrix metalloproteinases are markers of extracellular matrix (ECM) degradation. MMP-2 and MMP-9 have been suggested to be the major proteolytic enzymes to induce airway inflammation and remodeling in asthma. Their levels are increased in asthmatic patients. Anti MMP therapy could be theoretically useful to prevent airway remodeling in asthma<sup>49</sup>.

### XII) Activated protein C and plasmin system

Activated protein C may protect the lung from fibrosis and airway remodeling by suppressing activation of coagulation, decreasing the secretion of inflammatory cytokines and platelet-derived growth factor, and promoting fibrinolysis. Low activated protein C activity has been observed in BAL of asthmatic patients<sup>50</sup>.

Plasmin system plays an active role in tissue remodeling; plasmin degrades ECM, either directly or by activating MMPs. Plasmin system components are synthesized by airway cells. Inflammatory mediators affect their expression which is increased in bronchial asthma<sup>51</sup>.

### Clinical usefulness of inflammatory markers in diagnosis and treatment of bronchial asthma

Assessing airway inflammation is important for investigating the underlying mechanism, diagnosing, monitoring and treating asthma<sup>52</sup>. Evidence of airway inflammation (for example a raised exhaled NO or sputum eosinophilia) in

asymptomatic child may be indicative of failure to take their medications<sup>53</sup>.

In trials of corticosteroid withdrawal, increase of sputum eosinophils preceded worsening of symptoms, deterioration of lung function and bronchial hyperresponsiveness. Increases in sputum eosinophils have also been associated with exacerbations of asthma<sup>54</sup>. Maintenance of sputum eosinophil count less than or equal to 3% is associated with few exacerbations, admissions and courses of oral steroids<sup>55</sup>.

Treatment applications in asthma are based upon disease severity. Since asthma is a chronic disease whose severity may change over time, it is important to adjust treatment to appropriately match treatment requirements with disease severity. Failure to do this leads to undertreatment with the associated risk of impaired quality of life and severe exacerbations. Alternatively, over-treatment may occur, with the risk of excessive adverse effects<sup>56</sup>.

At present, in patients with asthma, symptoms and lung function are used to monitor severity and

adjust treatment. These measures are imperfectly correlated with the underlying pathophysiological processes in asthma, namely airway hyper-responsiveness and airway inflammation. Using objective measures of airway hyperresponsiveness and airway inflammation may lead to better management of asthma<sup>57</sup>. (Table 1).

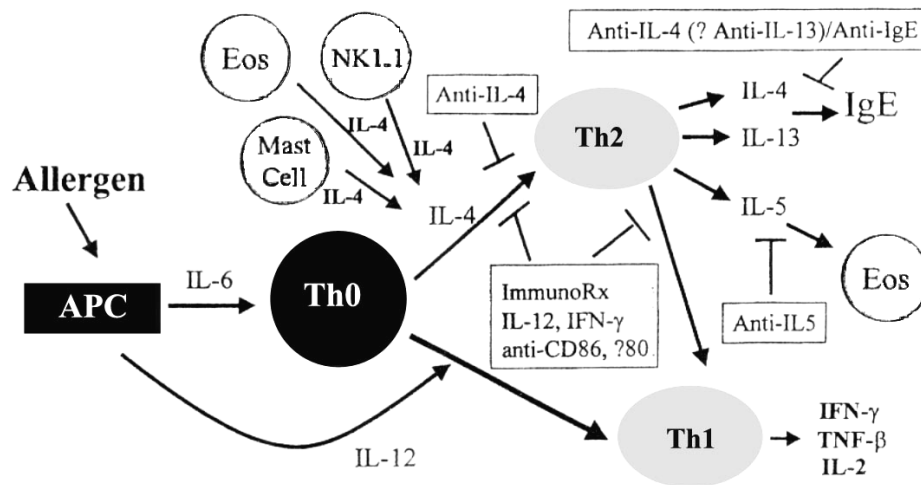
The dream is that every patient with bronchial asthma could be characterized with respect to the profile of involving cells and mediators. Such information would provide us with a unique understanding of the underlying mechanisms of development of disease symptoms and the possibility of treating them<sup>58</sup>. Also, this may help in the development of new therapeutic strategies such as decreasing cytokine synthesis or release, blocking their effects by antibodies or soluble receptors as well as administration of anti-inflammatory cytokines which will undoubtedly constitute a breakthrough in the management of asthmatic patients<sup>59</sup>. (Figure 3).

**Table 1.** Inflammatory markers used more commonly to assess response to treatment in bronchial asthma.

	Marker	Comments
Bronchial biopsies	Cellular infiltration cytokine/TH expression Remodeling changes	Highly invasive method; direct assessment of inflammation in the target organ.
Skin and nasal biopsies	Cellular infiltration cytokine/TH expression	Alternative, less invasive methods to assess responses to systemic treatment.
BALF	Cell differential (EOS) ECP, cytokines	Invasive method. Cellular components well documented; difficulties with markers in the fluid component due to dilution factors.
Induced sputum	Cell differential (EOS) ECP, cytokines	Correlates well with biopsies and BALF data. Widely used in research but time-consuming.
Exhaled air	NO	Limited to steroid-naïve asthmatics, detected in atopic patients only.
EBC	CO, ethane, pentane  pH, H <sub>2</sub> O <sub>2</sub> and cytokines	Not well documented as markers to assess treatment response  Simple non-invasive procedures. pH seems to be the only rapid marker, whereas measuring others is still time-consuming. Repeatability, stability and use in monitoring is not well documented for all markers.
Blood	Eosinophils  ECP, cytokines	Easy to measure, but reflect changes away from the target organ  ECP is the best eosinophil-derived marker. It correlates well with eosinophil activity in the airways.
Urine	EPX  LTE <sub>4</sub> , PGE <sub>2</sub>	Alternative for serum ECP; valuable tool in pediatric asthma.  Assess the therapeutic effect of 5-lipoxygenase inhibitors, however, leukotriene levels do not respond to steroid treatment.

BALF = bronchoalveolar lavage fluid; ECP = eosinophil cationic protein; NO = nitric oxide; EBC = expired breath condensate; EPX = eosinophil peroxidase; LTE<sub>4</sub> = leukotriene E<sub>4</sub>; PGF<sub>2</sub> = prostaglandin F<sub>2</sub>; H<sub>2</sub>O<sub>2</sub> = hydrogen peroxide, CO = carbon monoxide.

(Quoted from Gaga et al, 2003)<sup>57</sup>.



APC = antigen presenting cell; Eos = eosinophil; IL= interleukin; IFN- $\gamma$  = interferon gamma; TNF- $\beta$  = tumour necrosis factor beta.

**Figure 3.** Important steps in the development of T<sub>H2</sub>-lymphocytes and potential sites for intervention and treatment of bronchial asthma. (Quoted from Colavita et al, 2000)<sup>60</sup>.

**REFERENCES**

- 1- **LEMANSKE RF, BUSSE WW.** Asthma. *J Allergy Clin Immunol* 2003; 111(2 Suppl): S502-19.
- 2- **LEMANSKE RF.** Inflammation in childhood asthma and other wheezing disorders. *Pediatrics* 2002; 109(2 Suppl): S368-72
- 3- **SILKOFF PE.** Non-invasive measurement of airway inflammation using exhaled nitric oxide and induced sputum. Current status and future use. *Clin Chest Med* 2000; 21 (2): 345-60
- 4- **WARK PA, GIBSON PG.** Clinical usefulness of inflammatory markers in asthma. *Am J Respir Med* 2003; 2(1): 11-9.
- 5- **CURRIE GP, SYME-GRANT NJ, MCFARLANE LC, CAREY FA, LIPWORTH BJ.** Effects of low dose fluticasone/salmeterol combination on surrogate inflammatory markers in moderate persistent asthma. *Allergy* 2003; 58(7): 602-7.
- 6- **FUHLBRIGGE AL.** Asthma severity and asthma control: symptoms, pulmonary function, and inflammatory markers. *Curr Opin Pulm Med* 2004; 10(1): 1-6.
- 7- **MOTOJIMA S, TAKEISIU K, KOSEKI T, MAKINO S, FUKUDA T.** Serum levels of eosinophil cationic protein and IL-5 in patients with asthma without systemic corticosteroids. *Int Arch Allergy Immunol* 1997; 114(Suppl 1): 55-9.
- 8- **CORRIGAN CJ, KAY AB.** T cells and eosinophils in pathogenesis of asthma. *Immunol Today* 1992; 13(12): 501-7.
- 9- **BELDA J, GINER J, CASAN P, SANCHIS J.** Mild exacerbations and eosinophilic inflammation in patients with stable, well-controlled asthma after 1 year of follow up. *Chest* 2001; 119(4): 1011-7.
- 10- **MACPHERSON JC, GOMHAIR SA, ERZURUM SG, KLEIN DF, LIPSCOMB MF, KAVURU MS, ET AL.** Eosinophils are a major source of nitric oxide-derived oxidants in severe asthma: characterization of pathways available to eosinophils for generating reactive nitrogen species. *J Immunol* 2001; 166 (9): 5763-72.
- 11- **GORE C, PETERSON CGB, KISSEN P, SIMPSON BM, LOWE LA, WOODCOCK A, ET AL.** Urinary eosinophilic protein X, atopy and symptoms suggestive of allergic disease at 3 years of age. *J Allergy Clin Immunol* 2003; 112(4): 702-8.
- 12- **EL-GAMAL YM, HESHMAT NM, MAHRAN MZ, ELGABBAS ZM.** Expression of apoptosis inhibitor "Bcl-2" in sputum eosinophils from children with acute asthma (abstract). *J Allergy Clin Immunol* 2003; 111(2): S280.
- 13- **SPAHN J, COVAR R, STEMPEL DA.** Asthma: addressing consistency in results from basic science, clinical trials and observational experience. *J Allergy Clin Immunol* 2002; 109(5 Suppl): S490-502.

- 14- **REDA SM, MOSTAFA AA, ABDOU KM, SHEHAB AA.** Increased expression of T-helper cell activation markers in peripheral blood in children with atopic asthma. *Egypt J Pediatr Allergy Immunol* 2003; 1(1): 30-9.
- 15- **FOUDA EM, ABDEL FATTAH S, ABDEL HALIM AZ.** Expression of CD80 and CD86 on T lymphocytes and monocytes of asthmatic children. *Egypt J Pediatr Allergy Immunol* 2003; 1(1): 46-53.
- 16- **KEPLEY GL, MCFEELEY PJ, OLIVER JM, LIPSCOMB MF.** Immunohistochemical detection of human basophils in postmortem cases of fatal asthma. *Am J Respir Crit Care Med* 2001; 164(6): 1053-8.
- 17- **MACFARLANE AJ, KON OM, SMITH SJ, ZEIBECOGLU K, KHAN LN, BARATA LT, ET AL.** Basophils, eosinophils and mast cells in atopic and non-atopic asthma and in late-phase allergic reactions in the lung and skin. *J Allergy Clin Immunol* 2000; 105(1 Pt 1): 99-107.
- 18- **EL-GAMAL YM, AWAD Z, EL-KERDANY TA, IMAM SS.** Spontaneous basophil releasability of LTC<sub>4</sub> in childhood atopic diseases. *Egypt Med J* 1995; 12(4): 588-93.
- 19- **EL-GAMAL YM, ABDEL AZIM A, MOKHTAR G, ABDEL MANNAN A.** Pathogenicity of B-thromboglobulin and platelet factor-4 in asthmatic children. *J Allergy Clin Immunol* 1994; 2: 1327 (abstract).
- 20- **BARNES PJ, CHUNG KF, PAGE CP.** Inflammatory mediators of asthma: an update. *Pharmacol Rev* 1998; 50(4): 515-96.
- 21- **BUCKLEY RH.** The T-, B- and NK-cell systems. In: Behrman RE, Kliegman RM, Jenson HB, editors. *Nelson textbook of pediatrics*. 17<sup>th</sup> ed. Philadelphia: WB Saunders; 2004. p. 683-700.
- 22- **CHUNG KF, BARNES PJ.** Cytokines in asthma. *Throat* 1999; 54(9): 825-57.
- 23- **LEUNG DY.** Allergic disorders. In: Behrman RE, Kliegman RM, Jenson HB, editors. *Nelson textbook of pediatrics*. 17<sup>th</sup> ed. Philadelphia: WB Saunders; 2004. p. 743-92.
- 24- **ZLOTNIK A, YOSHIE O.** Chemokines: a new classification system and their role in immunity. *Immunity* 2000; 12 (2): 121-7.
- 25- **MOSER B, LOETSCHER P.** Lymphocyte traffic control by chemokines. *Nat Immunol* 2001; 2(2): 123-8.
- 26- **ZIMMERMANN N, HERSHEY GK, FOSTER PS, ROTHENBERG ME.** Chemokines in asthma: cooperative interaction between chemokines and IL-13. *J Allergy Clin Immunol* 2003; 111 (2): 227-42.
- 27- **PROOST P, WUYTS A, VAN DAMME J.** Human monocyte chemotactic proteins-2 and -3: Structural and functional comparison with MCP-1. *J Leukoc Biol* 1996; 59 (1): 67-74.
- 28- **MINSHALL EM, CAMERON L, LAVIGNE F, LEUNG DY, HAMILOS D, GARCIA-ZEPADA EA, ET AL.** Eotaxin mRNA and protein expression in chronic sinusitis and allergen-induced nasal responses in seasonal allergic rhinitis. *Am J Respir Cell Mol Biol* 1997; 17 (6): 683-90.
- 29- **CHRISTIE PE, HENDERSON WR JR.** Lipid inflammatory mediators: leukotrienes prostaglandins, platelet-activating factor. *Clin Allergy Immunol* 2002; 16: 233-54.
- 30- **COFFEY M, PETERS-GOLDEN M.** Extending the understanding of leukotrienes in asthma. *Curr Opin Allergy Clin Immunol* 2003; 3 (1): 57-63.
- 31- **EL-GAMAL YM, MOKHTAR GM, ELAHL HS, ATTIAH S, SAID A.** Sputum leukotrienes in childhood asthma (abstract). *J Allergy Clin Immunol* 1995; 95 (1 pt 2): 280.
- 32- **BACHARIER LB, GEHA RS.** Molecular mechanisms of IgE regulation. *J Allergy Clin Immunol* 2000; 105(2 Pt 2): S547-58.
- 33- **ROOK G.** Cell-mediated immune response. In: Roitt I, Brostoff J, Male D, editors. *Immunology*. 4<sup>th</sup> ed. London: Mosby; 1996. p. 1-12.
- 34- **CARSETTI R, KOHLER G, LAMERS MC.** A role for immunoglobulin D: Interference with tolerance induction. *Eur J Immunol* 1993; 23 (1): 168-78.
- 35- **NAKANO Y, MORITA S, KAWAMOTO A., SUDA T, CHIDA K, NAKAMURA R.** Elevated complement C3a in plasma from patients with severe acute asthma. *J Allergy Clin Immunol* 2003; 112 (3): 525-30.
- 36- **GERARD NP, GERARD C.** Complement in allergy and asthma. *Curr Opin Immunol* 2002; 14(6): 705-8.
- 37- **NADEEM A, CHHABRA SK, MASOOD A, RAJ HG.** Increased oxidative stress and altered levels of antioxidants in asthma. *J Allergy Clin Immunol* 2003; 111 (1): 72-8.
- 38- **YATES DH.** Role of exhaled nitric oxide in asthma. *Immunol Cell Biol* 2001; 79 (2): 178-90.
- 39- **GUSTAFSSON LE.** Exhaled nitric oxide as a marker in asthma. *Eur Respir J* 1998; 26: S49-52.

- 40- **STRUNK RC, SZEFLER SJ, PHILLIPS BR, ZEIGER RS, CHINCHILLI VM, LARSEN G, ET AL.** Childhood Asthma Research and Education Network of the National Heart, Lung and Blood Institute. Relationship of exhaled nitric oxide to clinical and inflammatory markers of persistent asthma in children. *J. Allergy Clin Immunol* 2003; 112(5): 883-92.
- 41- **CORRADI M, FOLESANI G, ANDREOLI R, MANINI P, BODINI A, PIACENTINI G, ET AL.** Aldehydes and glutathione in exhaled breath condensate of children with asthma exacerbation. *Am J Respir Crit Care Med* 2003; 167 (3): 395-9.
- 42- **BULLARD DC.** Adhesion molecules in inflammatory diseases: insights from knockout mice. *Immunol Res* 2002; 26 (1-3): 27-33.
- 43- **BARNES PJ.** Neurogenic inflammation in the airways. *Respir Physiol* 2001; 125 (1-2): 145-54.
- 44- **CARR MJ, HUNTER DD, UNDEM BJ.** Neurotrophins and asthma. *Curr Opin Pulmo Med.*, 2001; 7(1): 1-7.
- 45- **BRAUN A, LOMMATZSCH M, MANNSFELDT A, NEUHAUS-STEINMETZ U, FISCHER A, SCHNOY N, ET AL.** Cellular sources of enhanced brain-derived neurotrophic factor production in a mouse of allergic inflammation. *Am J Respir Cell Mol Biol* 1999; 21 (4): 537-46.
- 46- **LAMBRECHT BN.** Immunologists getting nervous: neuropeptides, dendritic cells and T cell activation. *Respir Res* 2001; 2(3): 133-8.
- 47- **SANAI L, HAYNES WG, MACKENZIE A, GRANT IS, WEBB DJ.** Endothelin production in sepsis and the adult respiratory distress syndrome. *Intensive Care Med* 1996; 22(1): 52-6.
- 48- **ASAI K, KANAZAWA H, OTANI K, SHIRAISHI S, HIRATA K, YOSHIKAWA J.** Imbalance between vascular endothelial growth factor and endostatin levels in induced sputum from asthmatic subjects. *J Allergy Clin Immunol* 2002; 110 (4): 571-5.
- 49- **SUZUKI R, MIYAZAKI Y, TAKABI K, TORII K, TANIGUCHI H.** Matrix metalloproteinases in the pathogenesis of asthma and COPD: implications for therapy. *Treat Respir Med* 2004; 3(1): 17-27.
- 50- **SUZUKI K, GABAZZA EC, HAYASHI T, KAMADA H, ADACHI Y, TAGUCHI O.** Protective role of activated protein C in lung and airway remodeling. *Crit Care Med* 2004; 32 (5 Suppl): S262-5.
- 51- **KUCHAREWICZ I, KOWAL K, BUGZKO W, BODZENTA-LUKASZYK A.** The plasmin system in airway remodeling. *Thromb Res* 2003; 112 (1-2): 1-7.
- 52- **CIGUTTO LC, DOWNEY GP.** Biological markers in diagnosing, monitoring and treating asthma: A focus on non-invasive measurements. *AACN Clin Issues* 2004; 15(1): 97-111.
- 53- **FUJISAWA T, TERADA A, ATSUBA J, IGUCHI K, KAMIYA H, SAKURAI M.** Clinical utility of serum levels of eosinophil cationic protein (ECP) for monitoring and predicting clinical course in childhood asthma. *Clin Exp allergy* 1998; 28(1): 19-25.
- 54- **TWADDELL SH, GIBSON PG, CARTY K, WOOLLEY KL, HENRY RL.** Assessment of airway inflammation in children with acute asthma using induced sputum. *Eur Respir J* 1996; 9 (10): 2104-8.
- 55- **JATAKANON A, LIM S, BARNES PJ.** Changes in sputum eosinophils predict loss of asthma control. *Am J Respir Crit Care Med* 2000; 161(1): 64-72.
- 56- **SONT JK, WILLEMS LN, BEL EH, VAN KRIEKEN JH, VANDENBROUCKE JP, STERK PJ.** Clinical control and histopathologic outcome of asthma when using airway hyperresponsiveness as an additional guide to long-term treatment. *Am J Respir Crit Care Med* 1999; 159 (4 Pt 1): 1043-51.
- 57- **GAGA M, ZERVAS E, LOUKIDES S.** The usefulness of inflammatory markers in monitoring treatment responses in asthma. *Clin Exp Allergy* 2003; 33(7): 855-8.
- 58- **VENGE P.** Monitoring the allergic inflammation. *Allergy* 2004; 59(1): 26-32.
- 59- **HENDELES L, ASMUS M, CHESBROWN S.** Evaluation of cytokine modulators for asthma. *Paediatr Respir Rev* 2004; 5 Suppl A: S107-12.
- 60- **COLAVITA AM, REINACH AJ, PETERS SP.** Contributing factors to the pathobiology of asthma. The Th1/Th2 paradigm. *Clin Chest Med* 2000; 21(2): 263-77.