

ORIGINAL ARTICLE**PREVALENCE OF SHIGELLA, SALMONELLA AND CAMPYLOBACTER SPECIES AND THEIR SUSCEPTIBILITY PATTERNS AMONG UNDER FIVE CHILDREN WITH DIARRHEA IN HAWASSA TOWN, SOUTH ETHIOPIA****Mulatu Getamesay¹, Beyene Getenet², Zeynudin Ahmed²****ABSTRACT**

BACKGROUND: Diarrhea is the leading cause of morbidity and mortality in under-five children in developing countries including Ethiopia. Therefore, up-to-date data on etiologic agent and susceptibility pattern are important for the management of bacterial diarrhea in under-five children, which was the main objective of this study.

METHOD: A cross-sectional study was conducted at Hawassa Adare Hospital and Millennium Health Center from June 6 to October 28, 2011. A total of 158 under-five children with diarrhea were selected using convenient sampling technique. Demographic and clinical data were collected using questionnaire. Fecal samples were collected and processed for bacterial isolation, and antimicrobial susceptibility testing following standard bacteriological techniques.

RESULT: A total of 158 fecal samples were collected from 81(51.3%) males and 77(48.7%) females of under-five children with diarrhea. Of the 158 fecal samples, 35(22.2%) bacterial pathogens were isolated. The isolated bacteria were *Campylobacter* species, 20 (12.7%), *Shigella* species, 11 (7.0%), and *Salmonella* species, 4 (2.5%). The majority of the isolates were sensitive to Chloramphenicol, Ciprofloxacin, Nalidixic acid and Cotrimoxazol and high rate of drug resistance was observed against Erythromycin and Amoxicillin.

CONCLUSIONS: The finding of this study indicates that *Campylobacter* species were the predominant etiologies and the presence of bacterial isolates resistant to the commonly prescribed drugs for treating diarrhea in children. Therefore, periodic monitoring of etiologic agent with their drug resistant pattern is essential in the management of diarrhea in children.

KEYWORDS: Diarrhea, Bacterial pathogen, Antimicrobial drugs, Under-five children, Hawassa, Ethiopia

DOI: <http://dx.doi.org/10.4314/ejhs.v24i2.1>

INTRODUCTION

Diarrhea is one of the main causes of morbidity and mortality of under-five children in developing countries. Here, the average number of episodes of diarrhea per child per year within this age group is 3.2 (1, 2). Bacterial diarrhea in under-five children is commonly caused by *Salmonella*, *Shigella* *Campylobacter* species and diarrheogenic *E. coli* (3, 4, 5). Of the pathogens causing diarrhea, *Shigella* continues to play a major role in etiology of inflammatory diarrhea and dysentery. Thus, it presents a serious challenge to public health

authorities worldwide (1). The prevalence of *Salmonella* infection varies depending on the water supply, waste disposal, food preparation practices and climate. The commonest illness among children caused by *Salmonella* is gastroenteritis (6). *Campylobacter* is one of the most frequently isolated bacteria from stools of infants with diarrhea in developing countries as result of contaminated food and water (7).

There were different prevalence rates of causative agents in different regions. A study conducted in Gondar on children with diarrhea

¹Department of Medical Laboratory Technology, Hawassa College of Health Science

²Department of Medical Laboratory and Pathology, Jimma University, Ethiopia

Corresponding Author: Beyene Getenet, Email: rgetenet@yahoo.com

isolated *Campylobacter*, *Salmonella* and *Shigella* species with prevalence of 10.5%, 5.2% and 5.2% respectively (8). Another related study conducted in Jimma also reported an isolation rate of 11.6%, 4.9% and 5.8% for *Campylobacter*, *Salmonella* and *Shigella* species respectively (9). *Shigella* species was also isolated from 34.6% of the patients who attended health facilities in Hawassa Town (10).

Development of antimicrobial resistance by enteric pathogens like *Shigella*, *Campylobacter* and *Salmonella* species against easily accessible and commonly prescribed drugs has become a major concern throughout the world, particularly in developing countries like Ethiopia (11).

According to Asrat (2008), the most strains of *Shigella* species in Ethiopia was resistant to Erythromycin (100.0%), Tetracycline (97.3%), Cephalothin (86.7%), Ampicillin (78.7%), Chloramphenicol (74.7%) and Sulfonamide (54.7%) (12). Moreover, Yismaw in Gondar also revealed that there was high resistance of *Shigella* species against Ampicillin (79.9%), Tetracycline (86 %) and Cotrimoxazole (73.4%) (13). In addition, a similar study done in Harar on drug susceptibility of *Shigella* species showed high resistance against Amoxicillin (100%), Ampicillin (100%) and Tetracycline (70.6%) (14), whereas resistance for *Salmonella* species against Ampicillin (81.2%), Cephalothin (86.4%), Chloramphenicol (83.7%), Erythromycin (100.0%), Gentamicin (75.6%), Sulfonamide (81.1%), Tetracycline (94.5%) and Trimethoprim-sulfamethoxazole (75.7%) was reported by Asrat (2008) done in Ethiopia (12). Likewise, the resistance to Amoxicillin (100%), Ampicillin (100%), Tetracycline (71.4%) and Chloramphenicol (62.3%) of *Salmonellas* species was reported by Reda *et al* in Harar (14). Moreover, a study on antimicrobial susceptibility of *Shigella* species in Hawassa, indicated the presence of high resistance against Gentamicin (96%), Nalidixic acid (90%), Ampicillin (93%), Erythromycin (90%) and Tetracycline (90%) (10). Multiple drug resistant *Shigella* isolates which showed resistance to six antibiotics (Ampicillin, Erythromycin, Cephalothin, Chloramphenicol, Tetracycline and Trimethoprim-sulfamethoxazole) have also been observed (10). Another study conducted in Jimma on drug susceptibility profile of *Campylobacter* species reported that the

isolates showed 50% and 60% resistance rate to Ampicillin and Trimethoprim-sulfamethoxazole respectively (9).

According to Ethiopia's Demographic and Health Survey of 2005, children who lived in the Southern Nation Nationalities and People (SNNP) Region were more susceptible to episodes of diarrhea (25.1 %) than those who lived in other regions (15). To our knowledge, there are no published studies on etiologies of diarrhea in under-five children in SNNPR.

Therefore, the purpose of this study was to identify bacterial etiologies of diarrhea and determine their antimicrobial susceptibility in under-five children against commonly prescribed drugs in Hawassa, South Ethiopia.

MATERIALS AND METHODS

A prospective cross-sectional study was conducted in Adare Hospital and Millennium Health Center in Hawassa, Ethiopia, from June 6 to October 28, 2011 to isolate common bacterial etiologies of diarrhea in under-five children, and assess their susceptibility patterns.

A total of 158 under-five children affected by diarrhea were included in the study. But, children who had taken antibiotic within seven days before data collection, those who were above 5 years old, and children whose parents/guardians were not voluntary were excluded from the study. Medical history was taken from each child and informed consent was obtained from the parents or guardians before sample collection was attempted. All the relevant demographic, clinical and laboratory data were recorded and transferred to the questionnaire prepared for this study.

Specimen Collection and Pathogen Identification: Freshly passed stool and rectal swab were collected, placed immediately in Cary Blair transport medium (Oxoid Ltd, Basingstoke, UK) and transported to the laboratory within six hours of collection. For identification of *Shigella* and *Salmonella* species, specimens were placed in Selenite F enrichment broth (Oxoid) and incubated at 37°C for 24 hours, then subcultured onto deoxycholate agar (DCA) and xylose lysine deoxycholate agar (XLD) (Oxoid) agar and then incubated at 37°C for 18-24 hours.

The growth of *Salmonella* and *Shigella* species was detected by their characteristic appearance on

XLD agar (*Shigella*: red colonies, *Salmonella* red with a black centre) and DCA (*Shigella*: pale colonies, *Salmonella* black centre pale colonies). The suspected colonies were further tested through a series of biochemical tests to identify *Shigella* and *Salmonella* species. *Salmonella* species were further confirmed by agglutination test with polyvalent anti-sera and *Shigella* isolates were sero-grouped by the slide agglutination test using commercially available anti-sera (Denka Seikn Co. Ltd, Japan) (16, 17).

For isolation and identification of *Campylobacter* species, the samples were inoculated on Charcoal Cefoperazone Deoxycholate (CCD) agar and incubated at 42°C for 48 hours. *Campylobacter* species were identified by growth on CCD medium with small gray colonies, at microaerophilic condition, growth at 42°C, positive oxidase and catalase test and Gram-staining reaction and morphology (16, 17).

Susceptibility testing: Antimicrobial drug susceptibility testing was carried out by using disk diffusion method, according to guidelines of Clinical Laboratory Standards Institute (CLSI) (18). The antibiotic discs used and their concentration were: Ampicillin (AMP, 10-µg), Chloramphenicol (C, 30-µg), Gentamicin (CN, 10-µg), Nalidixic acid (NA, 30-µg), Amoxicillin (AMX, 30-µg), Tetracycline (TE, 30-µg), Ceftriaxone (CRO, 30-µg), Cotrimoxazole (SXT, 30-µg), Erythromycin (E, 15-µg), Cephalothin (CF, 30-µg) and Ciprofloxacin (CIP, 5-µg). All antibiotics were obtained from Oxoid Limited, Basingstoke Hampshire, UK. A standard inoculum adjusted to 0.5 McFarland was swabbed on to Muller-Hinton agar (Oxoid Ltd. Basingstoke Hampshire, UK); antibiotic discs were dispensed after drying the plate for 3-5 minutes and incubated at 37°C for 24 hours. The reference strains used as control were *Pseudomonas aeruginosa* ATCC 27853, *Staphylococcus aureus* ATCC 29213, *Escherichia coli* ATCC 25922, *Shigella flexneri* ATCC 12021, *Salmonella typhimurium* ATCC 13311 and *Campylobacter jejuni* ATCC 33560.

Ethical clearance was secured from the Ethical Clearance Committee of the College of Public Health and Medical Sciences, Jimma University. Permission was also obtained from Hawassa Regional Health Bureau, Hawassa Adare Hospital, and Hawassa Millennium Health Center.

Data were entered and analyzed using SPSS version 16.0 computer software. Comparisons were made using Chi-square test. P-value of <0.05 was considered indicative of a statistically significant difference.

RESULTS

A total of 158 under-five children with diarrhea participated in the study. Seventy-one (44.9%) of the children were from Millennium Health Center and 87 (55.1%) of them were from Adare Hospital. Out of the 158 study participants, 81 (51.3%) were males and 77 (48.7%) were females resulting in an overall male to female ratio of 1.1:1. The age of the participants ranged from 1-58 months with a mean of 19.59 months (\pm SD14.89): thirty (19%) of them were younger than 6 months, 42 (26.6%) were between 12 and 23 months, and 30 (19%) were between 24 and 35 months old (Figure 1).

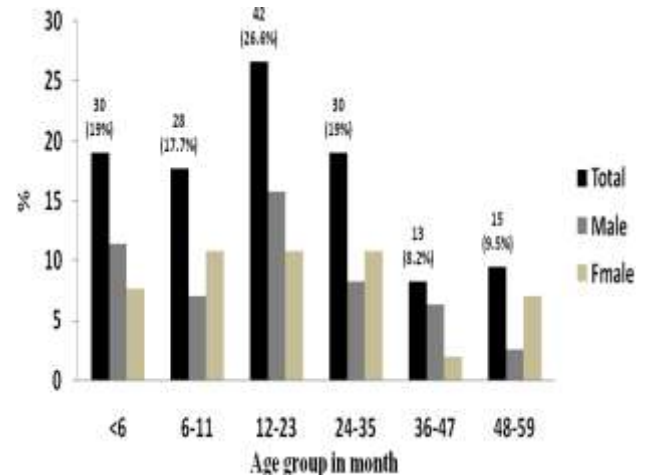


Fig 1: Distribution of participants by age and sex

The bacterial pathogens were identified from 35 (22.2%) study participants of which *Campylobacter* species was the leading isolate that accounted for 20 (12.7%) (Table 1).

Table 1: Frequency of bacterial pathogens isolated from fecal sample of children with diarrhea at Adare Hospital and Millennium Health Center from June to October 2011, Hawassa, South Ethiopia

Bacterial pathogens	Frequency	
	Positive No (%)	Negative No (%)
<i>Campylobacter Spp.</i>	20 (12.7)	138(87.3)
<i>Shigella</i> species	11 (7.0)	147(93.0)
<i>Salmonella</i> species	4 (2.5)	154 (97.5)

In this study, *Shigella* species was the second dominant bacterial etiology in under-five children with diarrhea and sero-grouping data indicating that all *Shigella* isolates were found to be *S. flexneri*. *S. flexneri* was frequently isolated from children with

dysentery, above 24 months of age and with three days' duration of diarrhea. Isolation rate of *S. flexneri* showed statistically significant association with dysenteric stool [$P < 0.001$] and children aged 36-47 months [$P = 0.025$] (Table 2).

Table 2: Demographic and clinical findings in association with culture result for *Salmonella*, *Shigella* and *Campylobacter* species among under-five children at Adare Hospital and Millennium Health Center, June to October 2011, Hawassa, South Ethiopia (*Blood and Mucoid, ** p = value statistical significance association)

Demographic & Clinical data	<i>Salmonella</i> spp (n=4)		<i>Shigella</i> spp (n=11)		<i>Campylobacter</i> spp (n=20)	
	Positive No (%)	Negative No (%)	Positive No (%)	Negative No (%)	Positive No (%)	Negative No (%)
Age group						
<6	1 (3.3)	29 (96.7)	1 (3.3)	29 (96.7)	5 (16.7)	25 (83.3)
6-11	0 (0)	28 (100)	1 (3.6)	27 (96.4)	3 (10.7)	25 (89.3)
12-23	1 (2.4)	41 (97.6)	2 (4.8)	40 (95.2)	8 (19)	34 (81)
24-35	1 (3.3)	29 (96.7)	2 (6.7)	28 (93.3)	1 (3.3)	29 (96.7)
36-47	0 (0)	13 (100)	4 (30.8)	9 (69.2)	3 (23.1)	10 (76.9)
48-59	1 (6.7)	14 (93.3)	1 (6.7)	14 (93.3)	0 (0)	15 (100)
				p=0.025**		
Sex						
Male	1(1.2%)	80(98.8)	4(4.9%)	77(95.1%)	11(13.6%)	70 (86.4%)
Female	3(3.9%)	74 (96.1%)	7(9.1%)	70 (90.9%)	9(11.7%)	68 (88.3%)
Clinical symptom						
Vomiting	0 (0)	52 (100)	4 (7.7)	48 (92.3)	5 (9.6)	47 (90.4)
Fever	2 (3.9)	50 (96.2)	4 (7.7)	48 (92.3)	9(17.3)	43 (82.7)
Abdominal pain	2 (5.6)	34 (94.4)	1 (2.8)	35 (97.2)	5 (13.9)	31 (86.1)
Dehydration	0 (0)	16 (100)	2 (12.5)	14 (87.5)	0 (0)	16 (100)
Consistency						
Watery	1 (1)	99 (99)	5 (5)	95 (95)	14 (14.0)	86 (86.0)
Mucoid	3 (6.8)	41 (93.2)	3 (6.8)	41(93.2)	5(11.4)	39 (88.6)
Bloody	0 (0)	1 (100)	0 (0)	1(100)	0(0)	1(100)
Mixed*	0 (0)	8 (100)	5 (62.5)	3(37.5)	1(12.5)	7(87.5)
				p< .001**		
Duration of diarrhea						
1-5 days	3 (2.4)	122 (97.6)	11 (8.8)	114 (91.2)	17 (13.6)	108 (86.4)
6-10 days	1 (4.4)	22 (95.6)	0 (0)	23 (100)	2 (8.7)	21 (91.3)
11-15 days	0 (0)	5 (100)	0 (0)	5 (100)	1 (20)	4 (80)
≥16 days	0 (0)	5 (100)	0 (0)	5 (100)	0 (0)	5 (100)
Total	4 (2.5)	154 (97.5)	11 (7)	147 (93)	20 (12.7)	138 (87.3%)

Salmonella species were identified as serogroup B (3, 1.9%) and serogroup A (1, 0.6%). Although the isolation rates of *Salmonella* species were low, three-fourth of the isolates were taken from children above 12 months of age. Similarly, most of the *Campylobacter* species was detected from children of less than 24 months old. A total of thirty-five bacterial pathogens [4 *Salmonella* species, 11 *Shigella* species and 20 *Campylobacter* species] were subjected to antimicrobial susceptibility tests using disk diffusion

method (Table 3). Accordingly, *Shigella flexneri* showed high resistance against Amoxicillin (100%), Erythromycin (90.9%) and Ampicillin (63.6%). However, low resistance rate was observed against Gentamicin (27.3%) and Chloramphenicol (9.1%) and there was no resistance rate observed against Ciprofloxacin, Nalidixic acid, and Cotrimoxazole (Table3).

All *Shigella flexneri* showed multiple drug resistance (MDR) (resistance to two or more drugs), and of these, 3 (27.3%), 3(27.3%) and 1(9.1%) were

resistant to four, five and six drugs respectively (Table 4).

The overall rate of resistance of *Salmonella* species was high for Erythromycin (100%) and Ceftriaxone (75%). But, lower resistance rate was observed against Nalidixic acid (25%). Among *Salmonella* serogroups, Serogroup B showed high resistance against Erythromycin (100%), and Ceftriaxone (100%). Similarly Serogroup A showed

100% resistance against both Erythromycin, and Nalidixic acid (Table 3).

Of the twenty *Campylobacter* species tested, high rate of resistance was observed against Amoxicillin (80%) and Erythromycin (55%). But, relatively low rate of resistance was seen against Ampicillin (30%), Nalidixic acid (20%), and Cotrimoxazole (20%), and there was no resistance detected against Chloramphenicol, and Ceftriaxone (Table 3).

Table 3: Drug resistance pattern of bacterial species from under-five children at Adare Hospital and Millennium Health Center, June to October 2011, Hawassa, South Ethiopia

Bacterial Isolates	n	No (%) of isolates resistance to										
		AP	T	C	CIP	E	NA	ST	CRO	AMC	CF	GM
<i>Shigella flex.</i>	11	7(63.6)	6(54.5)	1(9.1)	0(0)	10(90.9)	0(0)	0(0)	6(54.5)	11(100)	0(0)	3(27.3)
<i>Salmonella spp.</i>												
Serogroups B	3	0(0)	0(0)	0(0)	0(0)	3(100)	0(0)	0(0)	3(100)	0(0)	0(0)	0(0)
Serogroups A	1	0(0)	0(0)	0(0)	0(0)	1(100)	1(100)	0(0)	0(0)	0(0)	1(100)	0(0)
Total	4	0(0)	0(0)	0(0)	0(0)	4(100)	1(25)	0(0)	3(75)	0(0)	1(25)	0(0)
<i>Campylobacter spp</i>	20	6(30)	3(15)	0(0)	2(10)	11(55)	4(20)	4(20)	0(0)	16(80)	14(70)	14(70)
Total	35	13(3.1)	9(25.7)	1(2.9)	2(5.7)	25(71.4)	5(14.3)	4(11.4)	9(25.7)	27(77.1)	15(42.8)	15(42.8)

AP = Ampicillin, CRO = Ceftriaxone, NA = Nalidixic acid, AMC = Amoxicillin, C = Chloramphenicol, GM = Gentamicin, ST = Cotrimoxazol, T = Tetracycline, CIP = Ciprofloxacin, E = Erythromycin, CF = Cephalothin

Multiple drug resistance was detected in 19 (95%) of the *Campylobacter* isolates of which 9 (45%),

4(20%) and 1(5%) showed resistance to three, four and five drugs respectively (Table 4).

Table 4: Antibiogram of bacterial pathogens isolated from under-five children with diarrhea at Adare Hospital and Millennium Health Center June to October 2011, Hawassa, South Ethiopia

Organisms	No of Isolation	Antibiogram					
		R ₁ No (%)	R ₂ No (%)	R ₃ No (%)	R ₄ No (%)	R ₅ No (%)	R ₆ No (%)
<i>Shigella flexneri</i>	11	-	1(9.1)	3(27.3)	3(27.3)	3(27.3)	1(9.1)
<i>Salmonella spp.</i>							
Serogroups B	3	-	-	3(75)	-	-	-
Serogroups A	1	-	-	-	1(25)	-	-
Total	4	-	-	3(75)	1(25)	-	-
<i>Campylobacter spp</i>	20	1(5)	5(25)	9(45)	4(20)	1(5)	-
Total	35	1(2.9)	6 (17.1)	15(42.9)	8(22.9)	4(11.4)	1(2.9)

R₁= Resistance for one drug, R₂= Resistance for two drugs, R₃= Resistance for three drugs, R₄= Resistance for four drugs, R₅= Resistance for five drugs, R₆= Resistance for six drugs, - =No resistance

DISCUSSION

Diarrhea is among the leading causes of mortality and morbidity in under-five children and continues to be a health problem worldwide, especially in

developing countries (19, 20) where enteric bacteria are among the major causes of diarrhea among under-five children (7). The overall prevalence of enteric bacteria isolated in this study (22.2%) is comparable with previous studies conducted in Jimma (22.3%) (9) and Dembia District in Gondar

(20.9%) (8). However, the prevalence of bacterial pathogen is lower compared with previous studies conducted in other developing countries such as Tanzania (42.7%) (19) and Mozambique (27.2%) (2). The possible reason for such difference could be the inclusion of diarrheogenic *E. coli* in these studies.

According to results of related studies, among enteropathogenic bacteria, *Salmonella*, *Shigella*, *Campylobacter* species and diarrheogenic *E. coli* were the most frequently isolated bacteria in under-five children with diarrhea (5,17). In line with this, *Campylobacter*, *Shigella* and *Salmonella* species were isolated at the rates of 12.7%, 7% and 2.5% respectively. Comparable bacterial rates of isolates were reported from studies conducted in Jimma (*Campylobacter* species 11.6%, *Shigella* species 4.9% and *Salmonella* species 5.8%) (9), Gondar (*Campylobacter* species 10.5%, *Shigella* species 5.2% and *Salmonella* species 5.2%) (8) and Tikur Anbessa, Ethio-Swedish Children's Hospital (*Campylobacter* species 13.7%, *Shigella* species 11.7% and *Salmonella* species 3.8%) (21).

The rate of *Campylobacter* infections globally has been increasing with the number of cases often exceeding those of Salmonellosis and Shigellosis (22). High rates of *Campylobacter* species was reported from children in Jimma (11.6%) (9), Addis Ababa (13.7%) (21), North West Ethiopia (13.8%) (23) and Gondar (10.5%) (8). Generally, *Campylobacter* isolation rates in developing countries range from 5 to 20% (22), and the isolation rate of *Campylobacter* species (12.7%) in this study lies within the indicated range and is comparable with locally conducted studies such as the ones in Jimma (9), Addis Ababa (21), and North West Ethiopia (23). In this study, the majority (80%) of the *Campylobacter* species were isolated from children of less than 24 month of age, which agrees with the report of the World Gastroenterology Organization 2011(7).

The prevalence rate of *Shigella* species in this study was 7% which is closer to the studies conducted in Jimma by Beyene *et al* (9), in Gondar by Mitikie *et al* (8), in North west Ethiopia by Andualem *et al* (24) and in Harar, by Reda *et al* (14), in which the prevalence rates were 5%, 5.2%, 8.7% and 6.7% respectively. But, it is lower than the rate reported in studies carried out at Tikur Anbessa, Ethio-Swedish Children's Hospital by Asrat *et al* (21), in Jimma by Mache (25), in Hawassa by Roma *et al* (10), in Indonesia by Herwana *et al* (26), and in Iran by Mashouf *et al* (27) where the prevalence rates were 11.7%, 20.1%, 34.5%, 9.3% and 9.8%

respectively. The lower isolation rate could be due to difference in study participants and study time.

In this study, Serogroup B (*S. flexneri*) was the only species (100%) isolated from the study subjects. Its dominance was also reported in the studies by Roma *et al* (10) in Hawassa, with the isolation rate of 99% and by Asrat D (12) in Addis Ababa where Serogroup B (*S. flexneri*) was a dominant isolate (54.0%). This feature of *S. flexneri* was also reported in studies conducted in Indonesia (26), Iran (27) and South India (28). However, contrary to the current study, lower isolation of *S. flexneri* species (27%) was revealed by a study conducted in Botswana (29).

The overall prevalence of *Salmonella* species in this study was 2.5%. It is lower than the findings of other similar studies conducted by Mitikie *et al* in Gondar (5.2%), Beyene *et al* in Jimma (5.2%), and Asrat *et al* in Addis Ababa (3.8%) (8, 9, 21). But it is comparable with studies carried out in other developing countries such as Mozambique 2.5% (1), Tanzania 1.4% (19), Botswana 3% (29) and Palestine 2% (30). Among the four *Salmonella* isolates, there were 3(1.9%) Serogroup B and 1(0.6%) Serogroup A isolates, which is comparable with the finding of a study reported from Botswana where Serogroup B and Serogroup A were isolated with frequency of 2% and 1% respectively from under five children with diarrhea (29).

Antimicrobial resistance by enteric pathogens is of major concern because of indiscriminate use of drugs (11). In this study, *Shigella* isolates revealed reasonably high rate of resistance to a number of commonly used antibiotics in Ethiopia such as Amoxicillin (100%), Erythromycin (90.9%), Ampicillin (63.6%), Ceftriaxone (54.5%) and Tetracycline (54.5%).

The development of high resistance of *Shigella* species against commonly used antibiotics was witnessed by other investigators in different times. In Hawassa, a high rate of resistance of *Shigella* species to Ampicillin (93%), Erythromycin (90%), Tetracycline (90%) and Cotrimoxazole (56%) was reported by Roma *et al* 2000 (10). In Gondar, high antibiotic resistance was documented against Ampicillin (79.9%), Tetracycline (86%), and Cotrimoxazole (73.4%) by Yismaw *et al* 2006 (13). Asrat reported isolation of *Shigella* species with a high resistance to Erythromycin (100%), Tetracycline (97.3%), and Ampicillin (78.7%) in Addis Ababa (12). High resistance against Amoxicillin (100%), Ampicillin (100%) and Tetracycline (70.6%) was also reported by Reda *et al* in Harar (14).

In the current study, all *Shigella* isolates showed susceptibility to Ciprofloxacin, Nalidixic acid, and Cotrimoxazole. According to the Standard Treatment Guideline for General Health Facilities Treatment of Common Diseases in Ethiopia, Ciprofloxacin is the choice of drug as first line for bacillary dysentery caused by *Shigella* species and other pathogens. Cotrimoxazole and Ceftriaxone are among the other alternatives (31). Unlike the findings of previous studies, no resistance was observed against Cotrimoxazole, which could be associated with frequent use of this drug in previously reported study areas. Resistance to Cotrimoxazole, Tetracycline, Nalidixic acid and Ampicillin was also reported from South India (28). In this study, the rate of resistance of *Shigella* species against Gentamicin was 27.3%, which is relatively high compared with resistance rates reported in Hawassa (10), Jimma (25), (12) and Harar (14), all from Ethiopia, where the reported resistance rates were 2%, 1.3%, 0%, and 0% respectively. The possible reason could be the wide utilization of Gentamicin in the study area and frequent exposure of *Shigella* species to this drug.

Among the four *Salmonella* isolates, the overall rate of resistance was high for Erythromycin (100%), Ceftriaxone (75%) and Nalidixic acid (25%) which is comparable with the result of Asrat's study, where 100% and 37.8% of the isolates were resistant to Erythromycin and Nalidixic acid respectively (12). Contrary to our findings, high resistance rates of *Salmonella* species to Ampicillin (81.2%), Tetracycline (75.5%), Gentamicin (75.6%), Chloramphenicol (83.7%) and Amoxicillin (100%) were reported in other parts of Ethiopia (12, 14). This variability could be because of differences in prescription of drug pattern.

Most of the time, in immunocompetent individuals, *Campylobacter* enteritis is a self-limiting disease and need not to be treated with antimicrobial agents. However, in some patients, *Campylobacter* may cause severe complications and increase the risk of death, and, therefore, requires treatment (22, 32). In this study, eleven antibiotics were tested against 20 isolates of *Campylobacter* species. Compared with findings of similar studies conducted in other regions of Ethiopia, this study showed increased resistance against Amoxicillin (80%) and Erythromycin (55%), which are used for treatment of diarrhea due to *Campylobacter* species (8,9,23). However, the majority of the isolates were sensitive to Tetracycline and Ciprofloxacin which are considered to be an alternative treatment.

To sum up, in the present study, *Campylobacter*, *Shigella* and *Salmonella* species were isolated at different rates and played a dominant role in causing diarrhea in children of the study area. The overall antibiotic resistance levels against some commonly prescribed drugs were higher than those reported from other regions in Ethiopia, possibly due to the higher levels of exposure and usage of those antimicrobials in the study area.

Therefore, up-to-date information on etiologies and periodic monitoring of the antimicrobial susceptibility pattern is very important for the management of diarrhea in under-five children.

ACKNOWLEDGMENTS

We acknowledge Jimma University for its assistance with finance necessary to accomplish this research. We are also grateful to South Nations Nationalities and Peoples Region Health Bureau for their unreserved support.

REFERENCES

1. Mandomando IM, Macete EV, Ruiz J *et al.* Etiology of Diarrhea in Children Younger than 5 years of age Admitted in a Rural Hospital of Southern Mozambique. *Am J Trop Med Hyg* 2007; 76:522–527.
2. Vandepitte J, Verhaegen J, Engbaek K, Rohner P, Piot P, Heuck CC. Basic laboratory procedures in clinical bacteriology. 2nd ed. World Health Organization Geneva 2003; 1-167.
3. Gascon J, Vargas M., Schellenberg D. Diarrhea in Children under 5 Years of Age from Ifakara, Tanzania: a Case-Control Study. *J Clin Microbiol* 2000; 38: 4459–4462.
4. World Health Organization "A WHO network building capacity to detect, control and prevent food borne and other enteric infections from farm to table" Laboratory Protocol: WHO, 2010.
5. UNICEF/WHO, Diarrhea: Why children are still dying and what can be done, The United Nations Children's Fund /World Health Organization report, 2009;1-60.
6. Cleary TG. *Salmonella*. In: Feigin RD, Cherry JD, Demmler GJ, Kaplan SL, eds. Textbook of pediatric infectious diseases. 5th ed. Philadelphia: Saunders, 2004:1473-87.
7. World Gastroenterology Organization practice guideline: Acute diarrhea. *World Gastroenterology Organization*, 2008 available at www.ngc.org accessed on February 2011.

8. Mitikie G, Kassu A, Genetu A. and Nigussie D. *Campylobacter* enteritis among children in Dembia district, northwest Ethiopia. *East Afr Med J*, 2000; 77:654-657.
9. Beyene G, Haile-Amlak A. Antimicrobial sensitivity Pattern of *Campylobacter* species among children in Jimma University Specialized Hospital, Southwest Ethiopia. *Ethiop J Health Dev*, 2004; 18:185-189.
10. Roma B, worku S, T/Mariam S, Langeland N. Antimicrobial susceptibility pattern of *Shigella* isolates in Hawassa. *Ethiop J Health Dev*, 2000; 14: 149-154.
11. Temu MM, Kaatano GM, Miyaye ND *et al.* Antimicrobial susceptibility of *Shigella flexneri* and *S. dysenteriae* isolated from stool specimens of patients with bloody diarrhoea in Mwanza, Tanzania. *Tanzania Heal. Research Bull.*, 2007; 9:186-189.
12. Asrat D. *Shigella* and *Salmonella* serogroups and their antibiotic susceptibility patterns in Ethiopia. *East Mediterr Health J*, 2008; 14: 760-767.
13. Yismaw G, Negeri C, Kassu A. A Five-Year Antimicrobial Resistance Pattern Observed In *Shigella* Species Isolated From Stool Samples In Gondar University Hospital, Northwest Ethiopia . *Ethiop.J.Health Dev*. 2006; 20(3):194-198.
14. Reda A, Seyoum B, Yimam J, *et al.* Antibiotic susceptibility patterns of *Salmonella* and *Shigella* isolates in Harar, Eastern Ethiopia. *J Infect Dis Immun*, 2011; 3: 134-139.
15. Ethiopia Demographic and health Survey (EDHS) 2006. Central Statistical Agency Addis Ababa, Ethiopia, ORC Macro Calverton, Maryland, USA 2006.
16. Cheesbrough M. Medical laboratory manual for tropical countries. 2nd ed. Cambridge press, UK, 2006; 2: 38-39,138.
17. WHO. Basic laboratory procedure in clinical bacteriology. World Health Organization 2nd ed Geneva, 2003; 56-69.
18. CLSI. Performance Standards for Antimicrobial Susceptibility Testing; Twentieth Informational Supplement.2010; 29:1-160.
19. Vargas M, Gascon J, Casals C *et al.* Etiology of Diarrhea in Children less than five years of age in Ifakara, Tanzania. *Am J Trop Med Hyg*, 2004; 70:536-539.
20. Mota MI, Gadea MP, Gonzalez S. *et al.* Bacterial Pathogens Associated with Bloody Diarrhea in Uruguayan Children. *Rev Argent Microbiol*, 2010; 42: 114-117.
21. Asrat D, Hathaway A, Ekwall E. Studies on enteric campylobacteriosis in Tikur Anbessa and Ethio-Swedish children's hospital, Addis Ababa, Ethiopia. *East Afr Med J*, 1999; 37:71-84.
22. Coker AO, Isokpehi RD, Thomas BN, Amisu KO, and Obi CL. Human Campylobacteriosis in Developing Countries. *Emerg Infect Dis*, 2002; 8:237-243.
23. Gedlu E, Aseffa Campylobacter enteritis among children in north-west Ethiopia: a 1-year prospective study. *Ann Trop paediatr*, 1996; 16:207-12.
24. Andualem B, Kassu A, Diro E, Moges F, Gedefaw M. The prevalence and Antimicrobial responses of *Shigella* Isolates in HIV-1 infected and uninfected Adult Diarrhea Patients in North West Ethiopia. *Ethiop J Health Dev*, 2006; 20:99-105.
25. Mache A. Antimicrobial resistance and serogroup of *Shigella* among pediatric out patient in south west Ethiopia. *East Afr Med J*, 2001; 78: 296- 299.
26. Herwana E, Surjawidjaja JE , Salim oc *et al.* *Shigella*-Associated Diarrhea In Children In South Jakarta, Indonesia. *Southeast Asian J Trop Med Public Health*, 2010; 41:418-425.
27. Mashouf RY, Moshtaghi AA, Hashemi SH. Epidemiology Of *Shigella* Species Isolated From Diarrheal Children And Drawing Their Antibiotic Resistance Pattern. *Iran J Clinical Infect Disease*, 2006; 1:149-155.
28. Mamatha B, Pusapati BR ,Rituparna C. Changing Patterns Of Antimicrobial Susceptibility Of *Shigella* Serotypes Isolated From Children With Acute Diarrhea In Manipal, South India, A 5 Year Study. *Southeast Asian J Trop Med Public Health*, 2007; 38: 863-866.
29. Urio E.M, Collison E.K, Gashe B.A, Sebunya T. K and Mpuchane S. *Shigella* and *Salmonella* strains isolated from children under 5 years in Gaborone, Botswana, and their antibiotic susceptibility patterns. *Trop Med Int Health*, 2001; 6:55-59.
30. Elamreen FA, Abed AA, Sharif FA. Detection and Identification of Bacterial Enteropathogens by Polymerase chain reaction and Conventional Techniques in Childhood Acute Gastroenteritis in Gaza, Palestine. *Int J Infect Dis*, 2007; 11:501-507.
31. Drug Administration and Control Authority of Ethiopia Contents Standard Treatment Guideline For General Hospitals. DACA 2010; 46-54.
32. Engberg J, Neimann J, Moller E, Aarestrup F, and Fussing V. Nielsen Quinolone-resistant *Campylobacter* Infections in Denmark: Risk Factors and Clinical Consequences. *Emerg Infect Dis*, 2004; 10:1056-1063.