



Alexandria University Faculty of Medicine
Alexandria Journal of Medicine

www.sciencedirect.com



ORIGINAL ARTICLE

Breast cancer proliferative activity: Is it the source of serum free DNA?

Taha I. Hewala ^{a,*}, Nadia A. Abd El-Moneim ^b

^a Department of Radiation Science, Medical Research Institute, Alexandria University, 165 Horria Avenue, El Hadara, Alexandria 21561, Egypt

^b Department of Cancer Management and Research, Medical Research Institute, Alexandria University, 165 Horria Avenue, El Hadara, Alexandria 21561, Egypt

Received 30 December 2012; accepted 10 March 2013

Available online 13 April 2013

KEYWORDS

Breast cancer;
 Proliferative activity;
 Diagnosis;
 Prognosis;
 DNA;
 TPS;
 CEA

Abstract *Aim:* To study the relationship between serum DNA and breast cancer proliferative activity, then compare the diagnostic and prognostic values of serum DNA, TPS and CEA.

Subjects and methods: A total of 100 breast cancer patients before surgery and 50 apparently healthy controls were analyzed for serum DNA, TPS and CEA.

Results: Serum DNA levels were nonsignificantly correlated with serum TPS levels. Serum DNA, TPS and CEA levels were significantly higher in patients than controls. Using ROC curve analysis, serum TPS and DNA had the highest AUC compared to serum CEA. Neither serum TPS, DNA nor CEA correlated with breast cancer clinicopathological data. Only serum CEA was significantly correlated with patients' disease-free survival.

Conclusion: Neither Breast cancer mass nor proliferative activity is the source of serum free DNA. Serum TPS is superior to DNA and CEA as a diagnostic marker for breast cancer. Only preoperative serum CEA has a prognostic role in predicting relapse of breast cancer patients, but not serum TPS or DNA.

© 2013 Production and hosting by Elsevier B.V. on behalf of Alexandria University Faculty of Medicine.

1. Introduction

Several studies reported increased levels of free DNA in the serum of patients with various types of cancers including breast cancer.¹ However, the mechanism by which cell-free DNA is released into the circulation remains unknown. Some studies suggested that the tumor itself may be the source of free DNA.² Other studies indicated that cell death by apoptosis or necrosis may play a role in this phenomenon.³ It was reported that tumor cell proliferative activity but not apoptosis may be the source of free DNA.⁴

* Corresponding author. Tel.: +20 35633654; fax: +20 34283719.
 E-mail address: tahahewala@alex-mri.edu.eg (T.I. Hewala).

Peer review under responsibility of Alexandria University Faculty of Medicine.



Production and hosting by Elsevier

Tissue polypeptide specific antigen (TPS) is related closely to human cytokeratin 18, which is an essential part of the protein cytoskeleton of epithelial cells.⁵ As opposed to CA 15-3, which serum concentration provides data about tumor mass, serum TPS levels indicate proliferative activity of malignant tissue even if the mass is small.⁶ Elevated concentrations of TPS have been detected in association with a wide variety of malignancies, including breast cancer.⁷

Serum tumor markers have proved to be valuable and convenient for the detection of various primary and recurrent carcinomas. However, due to their low sensitivity and specificity, markers such as carcinoembryonic antigen (CEA) have little practical use in the early detection of patients with breast cancer.⁸

In terms of free DNA quantification, existing studies vary with regard to the techniques used, the standardization and analysis procedures.⁹ For example, in one study, the mean free DNA concentration in lung cancer patients was 8-fold higher than in controls¹⁰ but it was 13-fold lower than the concentrations reported previously by the same authors.¹¹ This difference was because the PCR method used in the second report measured only amplifiable DNA,¹¹ whereas the method used in the original report (spectrophotometer) could detect all DNA fragments.¹⁰ In the present study, we quantified the whole amount of free DNA present in serum by spectrophotometry at 260 nm depending on the idea that a DNA molecule contains a system of conjugated double bonds which absorb the UV light maximally at 260 nm.

The aim of the present study was to investigate whether or not a relationship exists between the level of serum DNA and TPS as a tumor proliferative index, then compare the diagnostic and prognostic values of serum DNA, TPS and CEA in breast cancer patients.

2. Subjects and methods

One hundred and fifty females were included in this study within the period from January 2007 to May 2008. They were divided into two groups: group I included 100 breast cancer patients with invasive ductal carcinoma of clinical stages II and III,¹² recently detected, with no surgical interference, not given chemotherapy; mean age: 48.36 ± 9.75 years. Patients were recruited from the Department of Cancer Management and Research of the Medical Research Institute, Alexandria University. Group II included 50 apparently healthy controls of matched age 47.45 ± 10.5 , menstrual and socioeconomic status.

After having approval from the ethics committee, Medical Research Institute, Alexandria University, Egypt, signed informed consents were obtained from all subjects who agreed to participate in this study. A full history was recorded and each patient underwent: a thorough clinical examination, routine laboratory investigations, mammography of both breasts, radiological investigations including X-ray of chest, ultrasonography of abdomen and liver, computed tomography (CT) scan of chest and abdomen and bone scan when needed, and fine-needle aspiration cytology (FNAC) of breast mass to establish the pathological diagnosis of the patients.

The clinicopathologic data were obtained from patients' pathology reports. The collected data included: tumor size, tumor pathological grade, axillary lymph node involvement,

vascular invasion, estrogen receptor (ER) and progesterone receptor (PR) status and HER-2-expression. For each patient, clinical stage was determined by the oncologist according to the tumor-node-metastasis (TNM) classification system.¹³

All 100 breast cancer patients underwent modified radical mastectomy, then received adjuvant combination chemotherapy (5-fluorouracil, adriamycin and cyclophosphamide [FAC])¹⁴ for six cycles. The patients were re-evaluated after three and six cycles of chemotherapy to estimate clinical response. They were followed up for 50 months until June 2012 for assessment of disease-free survival.

2.1. Laboratory investigations

Five milliliter venous blood samples were collected from the controls and patients before surgery. Immediately after withdrawing, blood samples were allowed to coagulate and then centrifuged for 20 min at 3500 rpm at 4 °C. The separated serum samples were aliquoted and stored frozen at -80 °C. After thawing, each serum sample was assayed once. Determination of serum concentrations of DNA, TPS and CEA was carried out at the radioisotopes laboratory of Radiation Sciences Department, Medical Research Institute, Alexandria University.

2.2. Purification of serum free DNA

The obtained serum was used to extract DNA using a ready-for use QIAamp DNA mini kit (Qiagen, Hilden, Germany). Briefly, serum was mixed with a protein kinase and a lysis buffer and incubated at 56 °C for 20 min in a microcentrifuge tube. Ethanol was added and the reaction mixture was applied to the QIAamp mini spin column. After washing, the column was eluted with the elution buffer.

2.3. Determination of serum free DNA concentration and purity

Serum free DNA concentration was measured at the wavelength of 260 nm by Nanodrop 2000/2000C spectrophotometer (thermo fisher Scientific Inc, Nanodrop Technologies, Wilmington, NC, USA). By using a standard curve, it is possible to calculate the absolute concentration of target DNA in a sample. In this study, we generated a standard curve using serial dilutions of known concentrations of DNA (500, 250, 100, 80, 40, 20, 10, 5, 0 ng/ μ l). Also, the purity was estimated from the ratio of absorbance at 260 nm and 280 nm (A_{260}/A_{280}). A ratio of ~ 1.8 (1.7–1.9) is generally accepted for pure DNA.

2.4. Determination of serum CEA concentrations

The level of serum CEA was determined using a ready-for-use Immunoradiometric assay (IRMA) kit (Siemens, USA) according to the producer's protocol. Briefly, serum was added to a plastic tube coated with the capture antibody. CEA assay buffer was added to the tubes which were shaken for 1 h at room temperature. The tubes were decanted and washed with the wash buffer. I^{125} -CEA antibody was added to all tubes which were shaken for 1 h at room temperature. The tubes were decanted, washed with the wash buffer and counted for

1 min in a gamma counter (Perkin Elmer, Finland). Computer assisted data reduction was used to simplify the calculations. The five-parameter logistic function curve was used to calculate CEA level in each serum sample.

2.5. Determination of serum tissue polypeptide specific antigen (TPS) concentrations

Serum TPS level was determined using a ready-for-use ELISA kit (DRG diagnostics, Germany) according to the manufacturer's protocol. Briefly, serum was added into each well, followed by HRP-conjugated Anti-TPS solution. Wells were shaken on a rack shaker (600 rpm) for 2 h at room temperature. Wells were decanted and washed with diluted wash solution. Tetramethyl-benzidine (TMB) substrate solution was added per well and incubated in the dark for 20 min. Stop solution was added per well and the wells were mixed well. Absorbance of every well was read at 450 nm. A standard curve was constructed from which the concentration of TPS in each serum sample was determined. The assay sensitivity was 6 U/L.

2.6. Statistical analysis

Statistical analysis was performed using the PASW 18 software package. The distribution of quantitative variables was tested for normality using Kolmogorov–Smirnov test, Shapiro–Wilk test. The data were abnormally distributed, so non-parametric tests were used. Non-parametric Spearman's test was used to investigate correlations between different parameters. The Mann–Whitney *U*-test was used for studying differences between the patient and control groups. The Receiver Operating Characteristic (ROC) curve analysis was used to compare the diagnostic accuracies of the studied parameter. Univariate survival analysis of the studied parameters was assessed using the Kaplan–Meier method. Statistical differences between survival curves were evaluated using the log-rank test. $p < 0.05$ was considered as significant.

3. Results

3.1. Correlation between serum DNA levels and breast cancer proliferative activity

In the present study, serum TPS was considered as a tumor proliferative index. A non-significant correlation ($r = 0.177$, $p = 0.116$) was found between serum DNA and TPS.

3.2. Median (range) of serum DNA, CEA and TPS levels in the breast cancer patients and apparently healthy controls

In women with breast cancer, serum concentrations of DNA (83.10 (42–221) ng/ μ l), CEA (4.0 (1.0–24.0) ng/ml) and TPS (144 (60–243) U/L) were significantly higher than those in control women (DNA: 49.00 (33–69) ng/ μ L, CEA: 3.5(0–11) ng/ml and TPS: 34 (10–175) U/L), ($P = 0.000$, $P = 0.013$ and $P = 0.000$ respectively).

Comparison between serum DNA, CEA and TPS as diagnostic markers in breast cancer patients using the Receiver Operating Characteristic (ROC) curve analysis was done.

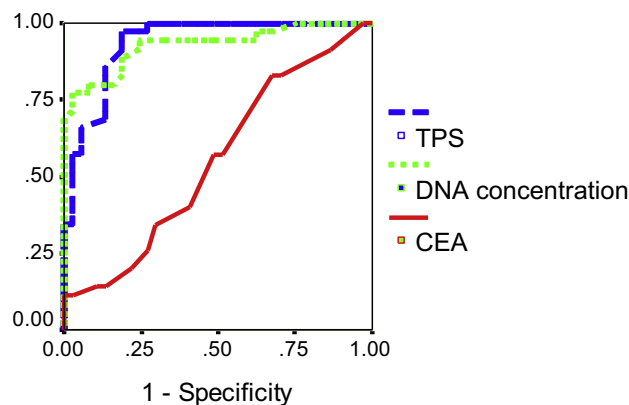


Figure 1 ROC curve analysis of serum DNA, TPS and CEA for prediction of breast cancer.

In the present study, the assayed serum parameters were of diagnostic value in breast cancer patients. So, the ROC curves of serum DNA and TPS were constructed to compare their diagnostic value with that of CEA, in such a way that the higher area under the curve (AUC) corresponds to a better diagnostic test, Fig. 1. To obtain the optimal cut off value for each parameter in predicting breast cancer, we chose the point on the ROC curve which represented the largest sum of sensitivity and specificity. As shown in Fig. 1 and Table 1, the AUC for serum TPS was 93.6% suggesting a strong discrimination power and nominates serum TPS as a diagnostic test with an excellent accuracy compared with serum DNA which has an AUC of 92.9% and serum CEA that has an AUC of 67.1% that is also a diagnostic marker with poor diagnostic accuracy. The probability that a female is affected by breast cancer when having positive serum TPS, DNA and CEA results is 85%, 98.5% and 53.6%, respectively. While the probability that a female is free from breast cancer when having negative serum TPS, DNA and CEA results is 77.5%, 72.2% and 54.6%, respectively

3.3. The relationship between serum DNA, CEA and TPS levels and clinicopathological data in breast cancer patients before surgery

Neither serum TPS, DNA nor CEA levels showed a significant correlation with the clinicopathological data of breast cancer patients

3.4. Relationship between preoperative serum DNA, CEA and TPS levels and patients' disease-free survival

Kaplan–Meier analysis and log-rank test revealed that serum DNA and TPS did not correlate with disease-free survival ($p = 0.540$, $p = 0.602$; respectively), while patients with elevated levels of serum CEA (≥ 4.88 ng/ml) had a significant shorter disease-free survival than those who had lower levels of this biomarker ($p = 0.037$) as shown in Fig. 2 and Table 2.

4. Discussion

The origin of circulating DNA is not fully understood. Qualitative studies have shown that genetic alternations such as

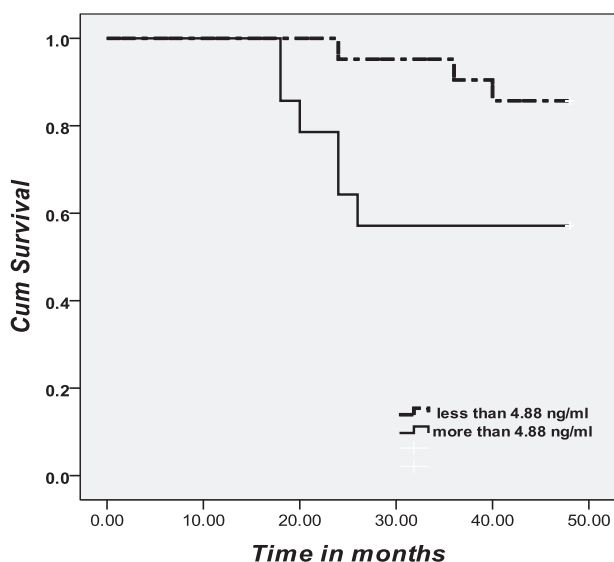
Table 1 Cut-off values and corresponding sensitivity, specificity, PPV and NPV for serum DNA, TPS and CEA for prediction of breast cancer.

Biomarker	AUC (%)	<i>p</i> -Value	Cut-off values	Sensitivity (%)	Specificity (%)	PPV (%)	NPV (%)
TPS (U/L)	93.6	0.00*	71	94.3	81.1	85	77.5
DNA (ng/μl)	92.9	0.00*	65.7	77.1	97.3	98.5	72.2
CEA (ng/ml)	67.1	0.01*	4.88	48.6	85.9	53.6	54.6

AUC: Area under the curve.

PPV: Positive predictive value.

NPP: Negative predictive value.

* Statistically significant at $p < 0.05$.**Figure 2** Kaplan–Meier disease-free survival curve for 100 breast cancer patients evaluated according to the levels of serum CEA at diagnosis.

mutations and loss of heterozygosity (LOH) were detected in circulating DNA, as well as in the matching tumor cells, suggesting that part of the extra circulating DNA in cancer patients is attributed to DNA released from tumor cells.^{15–17}

In the present study, the absence of correlation between serum DNA and TPS indicated that the proliferative activity of breast cancer cells is not the origin of serum free DNA. This result is confirming the results of Sozzi et al.¹⁰ who suggested that the mechanism of release of DNA into circulation is not related to tumor cell proliferation.

Also, in the present study, the absence of correlation between serum DNA and breast cancer clinicopathological data indicates that the tumor mass is not the source of free serum DNA. Our results are in agreement with those of Gal et al.¹⁸ who suggested that the mechanism of DNA release from tumors is not related to any of the known commonly used major prognostic factors and therefore might highlight different pathways, such as apoptosis, necrosis, and hypoxia that would need to be investigated. Gal et al.¹⁸ also stated that at least a proportion of the excess serum DNA in patients with tumors originates from a host response to the tumor (i.e. normal rather than tumor DNA).

The results of the present study provide an evidence of increased amounts of serum DNA, TPS and CEA in breast cancer patients than apparently healthy controls. This means that serum DNA, TPS and CEA levels can be used as a tool to distinguish breast cancer patients from apparently healthy controls. For TPS, our results are in agreement with the results of Kassim et al.¹⁹ For DNA, our results confirmed those of Sozzi et al.,¹¹ Gal et al.¹⁸ and Huang et al.¹ For CEA, our results supported those of Samy et al.²⁰

In the present study, to compare the accuracy of serum DNA, TPS and CEA in predicting breast cancer, the ROC curve was constructed which showed that serum TPS is superior to DNA and CEA for prediction of breast cancer. For TPS, at a cut-off level 71 U/L, the sensitivity was 94.3% and the specificity was 81.1%, with AUC 93.6%. These results are close to those of Kassim et al.¹⁹ who reported that at a cut-off 88 U/L, the sensitivity was 95%, and the specificity was 75% with AUC of 91%. The greater cut-off value in Kassim et al. study¹⁹ may be due to that their control group was from patients with benign breast diseases instead of apparently healthy controls. For serum DNA, at a cut-off concentration 65.7 ng/μl, the sensitivity was 77.1% and the specificity was 97.3%, with AUC 92.9%. Our results supported those found by

Table 2 Correlation between preoperative serum DNA, TPS and CEA levels and disease-free survival (months) among breast cancer patients.

	Cut off values	Survival time (months)	95% Confidence interval		<i>P</i> -value
		Mean ± SE	Lower bound	Upper bound	
DNA concentration (ng/μl)	≤65.7 (Negative)	40.27 ± 2.94	34.51	46.03	<i>P</i> = 0.540
	> 65.7 (Positive)	42.62 ± 1.25	40.16	45.07	
TPS (U/L)	≤71 (Negative)	40 ± 3.30	33.53	46.47	<i>P</i> = 0.602
	> 70 (Positive)	42.56 ± 1.23	40.18	44.97	
CEA (ng/ml)	< 4.88 (Negative)	45.91 ± 1.25	43.45	48.36	<i>P</i> = 0.037*
	≥ 4.88 (Positive)	36.71 ± 3.53	29.80	43.63	

Gal et al.¹⁸ who reported that at a cut-off concentration 221 ng/ml, the sensitivity was 70.8% and the specificity was 93.7%, with AUC 92%. For CEA, at a cut-off concentration 4.88 ng/ml, the sensitivity was 48.6% and the specificity was 85.9%, with AUC 67.1%. These results were in agreement with those of Vizcarra et al.²¹ who reported that at cut-off level 5 ng/ml, the diagnostic sensitivity and specificity of CEA in breast cancer were 44.4% and 95.5%, respectively.

The present study revealed that neither serum TPS nor CEA correlated with breast cancer clinicopathological data. Our results are compatible with the results reported by Hu et al.²² regarding TPS and Zheng et al.²³ regarding CEA.

The present study showed that neither serum DNA nor TPS correlated with disease-free survival. For serum DNA, our results supported those of Sozzi et al.¹¹ and Beau-faller et al.¹⁷ in lung cancer, but contradicted the results reported by Silva et al.²⁴ in breast cancer. The present study showed that serum CEA correlated significantly with breast cancer patients' disease-free survival which supported the results reported by Park et al.²⁵

In conclusion, neither breast cancer mass nor proliferative activity is the source of serum free DNA. Serum TPS is superior to DNA and CEA as diagnostic markers. Preoperative CEA level has a prognostic role in predicting relapse of breast cancer patients, but not serum TPS and DNA. Further studies are needed to determine the exact mechanism of free DNA release into the circulation.

References

- Huang ZH, Li LH, Hua D. Quantitative analysis of plasma circulating DNA at diagnosis and during follow-up of breast cancer patients. *Cancer Lett* 2006;**243**:64–70.
- Stroun M, Anker P, Maurice P, Lyautey J, Lederrey C, Beljanski M. Neoplastic characteristics of the DNA found in the plasma of cancer patients. *Oncology* 1989;**46**:318–22.
- Cabral REC, Neto JBC, Carvalho MGC. Circulating DNA as a biomarker for early detection of cancer: a brief update with an emphasis on lung cancer. *Open Lung Cancer J* 2010;**3**:38–44.
- Pretorius PJ. The origin of circulating free DNA. *Clin Chem* 2007;**53**:2215–24.
- Rydlander L, Ziegler E, Bergman T, Schöberl E, Steiner G, Bergman AC, et al. Molecular characterization of a tissue-polypeptide-specific-antigen epitope and its relationship to human cytokeratin 18. *Eur J Biochem* 1996;**241**:309–14.
- Bjorklund B, Einarsson R. TPS (tissue polypeptide specific antigen) in oncologic practice: a review with reference to 3000 cases of breast cancer. *Tumordiagn Ther* 1996;**17**:67–73.
- D'Alessandro R, Roselli M, Ferroni P, Mariotti S, Spila A, Aloe S, et al. Serum tissue polypeptide specific antigen (TPS): a complementary tumor marker to CA15-3 in the management of breast cancer. *Breast Cancer Res Treat* 2001;**68**:9–19.
- Duffy MJ. Serum tumor markers in breast cancer: are they of clinical value? *Clin Chem* 2006;**52**:345–51.
- Pathak AK, Bhutani M, Kumar S, Mohan A, Guleria R. Circulating cell-free DNA in plasma/serum of lung cancer patients as a potential screening and prognostic tool. *Clin Chem* 2006;**52**:1833–42.
- Sozzi G, Conte D, Leon M, Ciricione R, Roz L, Ratcliffe C, et al. Quantification of free circulating DNA as a diagnostic marker in lung cancer. *J Clin Oncol* 2003;**21**:3902–8.
- Sozzi G, Conte D, Mariani L, Lo Vullo S, Roz L, Lombardo C, et al. Analysis of circulating tumor DNA in plasma at diagnosis and during follow-up of lung cancer patients. *Cancer Res* 2001;**61**:4675–8.
- Rintoul RF. Operations on the breast. In: Farquhaerison's text book of operative surgery. 7th ed. Churchill living stone (pub.); 1986, pp. 270–281.
- Haskell CM, Lowitz BB, Casciato AD. Breast cancer. In: Casciato BB, Lowitz BB, editors. *Manual of clinical oncology*. 2nd ed. Boston, Toronto: Little and Brown Company (pub.); 1985, pp. 150–65.
- Abeloff MD, Lichter AS, Niederhuber JE, Pierce LJ, Aziz DC. Breast. In: Abeloff MD, Armitage JO, Licher AS, Niederhuber JE, editors. *Clinical Oncology*. Churchill livingstone Inc. (Pub.); 1995, Chapter 73, pp 1617–714.
- Gonzalez R, Silva JM, Sanchez A, Dominguez G, Garcia JM, Chen XQ, et al. Microsatellite alterations and TP53 mutations in plasma DNA of small cell lung cancer patients: follow-up study and prognostic significance. *Ann Oncol* 2000;**11**:1097–104.
- Shaw JA, Smith BM, Walsh T, Johnson S, Primrose L, Slade MJ, et al. Microsatellite alterations plasma DNA of primary breast cancer patients. *Clin Cancer Res* 2000;**6**:1119–24.
- Beau-Faller M, Gaub MP, Schneider A, Ducrocq X, Massard G, Gasser B, et al. Plasma DNA microsatellite panel as sensitive and tumor-specific marker in lung cancer patients. *Int J Cancer* 2003;**105**:361–70.
- Gal S, Fidler C, Lo YMD, Taylor M, Han C, Moore J, et al. Quantitation of circulating DNA in the serum of breast cancer patients by real-time PCR. *Br J Cancer* 2004;**90**:1211–5.
- Kassim SK, Fawzy H, El Rassad MM, Khalil FK, Khalifa A. Telomerase activity and tissue polypeptide specific antigen (TPS) in Egyptian breast cancer patients. *Clin Biochem* 2001;**34**:499–504.
- Samy N, Ragab HM, El Maksoud NA, Shaalan M. Prognostic significance of serum Her2/neu, BCL2, CA15-3 and CEA in breast cancer patients: a short follow-up. *Cancer Biomarkers* 2010;**6**:63–72.
- Vizcarra E, Lluch A, Cibrián R, Jarque F, Alberola V, Belloch V, et al. Value of CA 15.3 in breast cancer and comparison with CEA and TPA: a study of specificity in disease-free follow-up patients and sensitivity in patients at diagnosis of the first metastasis. *Breast Cancer Res Treat* 1996;**37**:209–16.
- Hu XC, Day W, Jones B, Loo WT, Chow LW. Comparison of TPS with CEA and CA 15.3 in follow-up of Chinese breast cancer patients. *Anticancer Res* 2002;**22**:1865–8.
- Zheng Y, Chen Y, Hu M, Lin Y, Chen Y. Correlation of preoperative serum tumor markers with clinicopathological features and prognosis in breast cancer. *Cancer Clin Oncol* 2012;**1**:124–32.
- Silva JM, Silva J, Sanchez A, Garcia JM, Dominguez G, Provencio M, et al. Tumor DNA in plasma at diagnosis of breast cancer patients is a valuable predictor of disease-free survival. *Clin Cancer Res* 2002;**8**:3761–6.
- Park BW, Oh JW, Kim JH, Park SH, Kim K, Kim JH, et al. Preoperative CA 15-3 and CEA serum levels as predictor for breast cancer outcomes. *Ann Oncol* 2008;**19**:675–81.