

African Crop Science Journal, Vol. 19, No. 4, pp. 343 - 355
Printed in Uganda. All rights reserved

ISSN 1021-9730/2011 \$4.00
©2011, African Crop Science Society

REACTION OF SELECTED COMMON BEAN GENOTYPES TO PHYSIOLOGICAL RACES OF *PHAEOSARIOPSIS GRISEOLA* OCCURRING IN KENYA

I .N. WAGARA, A.W. MWANG'OMBE¹, J.W. KIMENJU¹, R.A. BURUCHARA² and P.M. KIMANI¹

Department of Biological Sciences, Egerton University, P. O. Box 536, Egerton, Kenya

¹Department of Plant Science and Crop Protection, University of Nairobi, P. O. Box 30197, Nairobi, Kenya

²Centro Internacional de Agricultura Tropical (CIAT), Kawanda Agricultural Research Institute,

P. O. Box 6247, Kampala, Uganda

Corresponding author: inwagara@yahoo.com

ABSTRACT

The wide pathogenic variability occurring in *Phaeoisariopsis griseola*, the causal agent of angular leaf spot of common bean (*Phaseolus vulgaris* L.), dictates that new sources of resistance be continuously identified. This study was undertaken to determine the reaction of selected bean genotypes to different races of *P. griseola* in order to identify potential sources of resistance to angular leaf spot. Selected bean genotypes from Eastern and Central Africa Bean Research Network (ECABREN) and National Dryland Farming Research Centre (NDFRC), Katumani in Kenya were separately inoculated with forty-four races of *P. griseola* and evaluated for disease development under greenhouse conditions. The genotypes included small- and large-seeded types. None of the genotypes was resistant to all the races, indicating a high complexity of the pathogen population. Thirteen genotypes were resistant (disease score 1 to 3) or moderately resistant (score 4 to 6) to at least 40 of the races. Small-seeded bean genotypes ECAB 0754 and ECAB 0617 were resistant or moderately resistant to all races except Mesoamerican race 33-39 and Afro-Andean race 58-18, respectively. Genotype ECAB 0754 exhibited the highest level of resistance, with an average disease severity of 1.1%. All the resistant or moderately resistant genotypes were of the small-seeded bean types which are commercially less popular. The commonly grown large-seeded genotypes were generally susceptible. Among the bean genotypes evaluated, the small-seeded pintos and browns/yellows possessed high levels of resistance. The results of this study indicate that different bean genotypes have varying levels of resistance to angular leaf spot that can be pyramided into appropriate background to provide durable resistance.

Key Words: Angular leaf spot, Pathogenic variability, *Phaseolus vulgaris*

RÉSUMÉ

Une large variabilité pathogénique du *Phaeoisariopsis griseola*, l'agent causal de la tache angulaire de feuilles du haricot commun (*Phaseolus vulgaris* L.), suggère qu'il y ait une identification continue de nouvelles sources de résistance. Cette étude était entreprise pour déterminer la réaction des génotypes de haricot sélectionnés aux différentes races de *P. griseola* afin d'identifier de sources potentielles de résistance à la maladie de tache angulaire de la feuille. Les génotypes de haricot fournis par l'*Eastern and Central Africa Bean Research Network* (ECABREN) et le *National Dryland Farming Research Centre* (NDFRC), Katumani au Kenya étaient séparément inoculés avec quarante-quatre races de *P. griseola* pour l'évaluation en serre du développement de maladies. Les génotypes comprenaient de petits et gros grains de semences. Aucune des génotypes n'était résistant à toutes les races de maladies, indiquant ainsi une complexité élevée de la population des pathogènes. Treize génotypes étaient résistants (échelle de notation: 1 à 3) ou modérément résistants (échelle de notation: 4 à 6) sur au moins quarante de toutes les races. Les génotypes de haricot à petits grains ECAB 0754 et ECAB 0617 étaient résistants ou modérément résistants à toutes les races à l'exception de *Mesoamerican race* 33-39 et *Afro-Andean race* 58-18, respectivement. Le Génotype ECAB 0754 avait manifesté un niveau élevé de résistance, avec un taux moyen de sévérité de 1.1%. Tous les génotypes résistants ou modérément résistants étaient de ceux à petits grains commercialement moins populaires. Les génotypes à gros grains communément cultivés étaient généralement susceptibles. Parmi les génotypes

évalués, ceux à petits grains “*pintos*” et bruns/jaunes étaient dotés des niveaux élevés de résistance. Les résultats de cette étude montrent que différents génotypes de haricot possèdent de niveaux différents de résistance à la maladie de tâche angulaire de la feuille pouvant être combinés par pyramidage pour développer une variété de haricot à résistance durable.

Mots Clés: Tâche angulaire de la feuille, Variabilité pathogénique, *Phaseolus vulgaris*

INTRODUCTION

Common bean (*Phaseolus vulgaris* L.) is widely cultivated in tropical and subtropical countries, where it is an important source of proteins, carbohydrates, fiber, vitamins and minerals (Wortmann *et al.*, 1998; Voysest, 2000). In Kenya, common bean is the most important legume in the pulses category and is second only to maize as a food crop (Gethi *et al.*, 1997). Despite its importance, bean yields in developing countries are among the lowest in the world, with average of 0.5 tonnes ha⁻¹ (FAO, 2007) compared to 1–2 tonnes ha⁻¹ commonly reported in experimental fields.

The low yields are attributed to a number of constraints, most important of which are diseases, insect pests, low soil fertility and periodic water stress (Allen *et al.*, 1989; Otyula *et al.*, 1998). Angular leaf spot (ALS) of common bean, caused by *Phaeoisariopsis griseola* (Sacc.) Ferraris, is one of the most damaging and widely distributed diseases of common bean, causing yield losses as high as 80% (Stenglein *et al.*, 2003). In Africa, particularly in Kenya, Malawi, Ethiopia, Uganda, Tanzania, where beans constitute the most important source of dietary protein, ALS is a significant constraint causing annual losses estimated at 374,800 tonnes in the region (Wortmann *et al.*, 1998).

Use of resistant varieties is pivotal to any effective, economical and environmentally friendly strategy of managing ALS, especially for small-scale farmers in sub Saharan Africa. The advantage of host plant resistance is that once the technology has been developed, it is packaged in seed which is easier to disseminate and deploy, and does not require any additional or specialised handling on the part of the farmers (Mahuku *et al.*, 2009). The greatest setback to development and deployment of resistant bean varieties is the high pathogenic

variability occurring in *P. griseola* that renders varieties that are resistant in one location or year susceptible in another (Mahuku, *et al.*, 2002a). Characterisation based on differential cultivars, random amplified polymorphic DNA (RAPD) markers, microsatellites, isozymes and amplified fragment length polymorphism (AFLP) have revealed high levels of pathogenic and genetic variation in *P. griseola* (Guzman *et al.*, 1999; Mahuku *et al.*, 2002a; 2002b; Wagara *et al.*, 2004; 2005). In Kenya, forty-four physiological races of *P. griseola* have so far been identified (Wagara *et al.*, 2005).

Despite their great diversity within and between countries, isolates of *P. griseola* have been classified into Andean, Afro-Andean and Mesoamerican (Mahuku *et al.*, 2002a; 2002b; Wagara *et al.*, 2005). Andean isolates of *P. griseola* do not infect Mesoamerican beans, while Mesoamerican isolates infect beans from both gene pools but are more virulent on Mesoamerican beans. Afro-Andean isolates, on the other hand, infect one or two Mesoamerican differential genotypes in addition to the Andean. Resistance genes of Mesoamerican origin are more effective in managing Andean ALS pathotypes and *vice versa* (Mahuku *et al.*, 2009).

Inheritance studies have shown that ALS resistance in common bean is mediated by both major and minor genes that are either dominant or recessive with complementary or epistatic effects and acting alone or in combination (Carvalho *et al.*, 1998; Mahuku *et al.*, 2004; Caixeta *et al.*, 2005). Sartorato (1989) reported that some bean varieties (Cornell 49242, RG1342, CH60, Mexico 279 and Mexico 54) possess high levels of race-specific or vertical resistance, while others like Compuesto Chimaltenango 2 have race non-specific or presumed horizontal resistance to angular leaf spot. There are also indications that race-reducing resistance against *P. griseola* occurs in some bean varieties whereby varieties show

differences in the time when symptoms appear and the extent of disease severity (Buruchara, 1983; Wagara, 1996).

Bean cultivars that are resistant to some *P. griseola* races are available (Liebenberg and Pretorius, 1997; Pastor-Corrales *et al.*, 1998; Ferreira *et al.*, 2000; Stenglein *et al.*, 2003), but there are no genotypes that are resistant to all the pathogen races. Thus, better sources of multiple resistance to ALS should be identified. The high pathogenic variability of *P. griseola* population and the wide distribution of the pathogen races imply that using a single source of resistance would be insufficient in management of ALS. Pyramiding several resistance genes in one variety is one way of breeding broad and durable resistance into dry bean (Mahuku *et al.*, 2002b). Combining Andean and Mesoamerican resistance genes into the same background is more likely to result in durable resistance to many ALS pathotypes (Mahuku *et al.*, 2009). An important step towards achieving this goal involves screening of the available germplasm against a broad range of *P. griseola* population. This study was, therefore, undertaken to determine the response of selected bean genotypes to races of *P. griseola* occurring in Kenya in an effort to identify potential sources of resistance to ALS.

MATERIALS AND METHODS

Source of *Phaeoisariopsis griseola* isolates.

Forty four isolates of *P. griseola*, which were representative of 44 physiological races of the pathogen identified in Kenya, were used in this study (Table 1). Eight of the races were Andean, 12 Afro-Andean and 24 were Mesoamerican. The isolates had been obtained from naturally ALS infected bean leaves collected from farmers' fields in different bean growing areas in Kenya, and characterised into races based on their reactions on the twelve international differential bean cultivars (Wagara *et al.*, 2005).

Selection and inoculation of bean genotypes. A total of two hundred bean genotypes were used in this study. One hundred and fifty two genotypes were from Eastern and Central Africa Bean Research Network (ECABREN), 40 from

National Dryland Farming Research Centre (NDFRC) at Katumani, and eight advanced lines from the Bean Breeding Programme of the

TABLE 1. Race, virulence group and sources of *Phaeoisariopsis griseola* isolates that were used in screening common bean genotypes

Isolate	Race	Virulence group	District of origin
eb2	6-0	Andean	Embu
eb5	10-0	"	Embu
tt10	14-0	"	Taita Taveta
mk12	26-0	"	Machakos
mk8	31-0	"	Machakos
eb11	34-0	"	Embu
tt7	39-0	"	Taita Taveta
eb15	46-0	"	Embu
kk16	22-32	Afro-Andean	Kakamega
tt14	30-1	"	Taita Taveta
kk13	30-4	"	Kakamega
mk9	30-18	"	Machakos
mk1	31-32	"	Machakos
tt12	31-34	"	Taita Taveta
tt8	46-2	"	Taita Taveta
kb17	56-2	"	Kiambu
eb3	58-18	"	Embu
tt4	62-32	"	Taita Taveta
tt6	63-32	"	Taita Taveta
tt13	63-48	"	Taita Taveta
mk16	30-23	Meso-American	Machakos
eb25	30-51	"	Embu
eb21	30-55	"	Embu
tt17	31-7	"	Taita Taveta
kk9	31-39	"	Kakamega
kk10	33-39	"	Kakamega
tt20	59-39	"	Taita Taveta
mk19	59-54	"	Machakos
eb27	59-63	"	Embu
kb5	62-3	"	Kiambu
kb12	62-7	"	Kiambu
tt18	62-23	"	Taita Taveta
eb20	62-37	"	Embu
kb10	62-39	"	Kiambu
mk3	62-55	"	Machakos
eb9	63-7	"	Embu
kb1	63-23	"	Kiambu
eb28	63-35	"	Embu
mk24	63-39	"	Machakos
kk12	63-47	"	Kakamega
kb14	63-51	"	Kiambu
tt19	63-54	"	Taita Taveta
tt11	63-55	"	Taita Taveta
eb26	63-63	"	Embu

University of Nairobi. The bean genotypes included both small- and large-seeded types and were selected based on yield performance and/or resistance to diseases such as bean anthracnose and rust. A preliminary evaluation of the two hundred bean genotypes for reaction to the most virulent race of *P. griseola* (Mesoamerican race 63-63) was undertaken and the results were used to select genotypes for further evaluation with the other forty-three races of the pathogen.

Reactions of the bean genotypes to races of *P. griseola* were assessed under greenhouse conditions. Bean seeds were surface-sterilised in 2.5% sodium hypochlorite for three minutes and rinsed in five changes of sterile distilled water. The seeds were sown in sterile soil composed of soil, sand, manure and ballast in the ratio of 2:1:1:1. Five seeds of each genotype were sown per two kilogramme pot capacity and thinned to three plants two weeks after sowing. Three pots (a total of nine plants) were used for each genotype. Monosporic cultures of *P. griseola* were grown on bean leaf dextrose agar (BLDA) for 14 days, in a non-illuminated incubator at 24 °C. Inoculum was prepared by adding sterile distilled water onto culture plates and scrapping the culture surface with a sterile glass rod. Three-weeks-old seedlings were spray-inoculated with the pathogen at a concentration of 2×10^4 conidia ml⁻¹ until runoff, using a hand-sprayer from East Africa Seed Company. Plants sprayed with sterile water were included as the control. The plants were placed on a greenhouse bench and maintained in high humidity through frequent mist sprays to facilitate disease development. A completely randomised design with nine replicates was used.

Disease assessment. Inoculated plants were examined daily for ALS symptom development, up to 21 days. On appearance of ALS symptoms, plants were scored for disease severity four times after every three days using a scoring scale of 1 to 9 (Van Schoonhoven and Pastor-Corrales, 1987). Reaction type categories were determined from the average of disease scores for each isolate-host genotype combination. Plants showing disease scores 1 to 3 were

considered resistant, 4 to 6 as moderately resistant and host responses corresponding to scores 7 to 9 as susceptible. Forty six resistant or moderately resistant bean genotypes were selected for further evaluation with the other forty three races of *P. griseola* occurring in Kenya. Four of the commonly grown bean varieties (Rosecoco GLP-2, Mwitmania GLP-X.92, Red Haricot GLP-585 and Canadian Wonder GLP-24) were included as checks. Each race of the pathogen was handled in a separate inoculation chamber to avoid cross-infection.

The experiment (planting, inoculation and disease evaluation) was repeated once to confirm results. Data on percent disease severity of each isolate-host genotype interaction were analysed by the analysis of Variance (ANOVA) using GenStat Release 6.1 (GenStat Procedure Library Release PL14). Separation of means was done using least significant difference (LSD) test at $P < 0.05$.

RESULTS

Out of the 200 bean genotypes inoculated with *P. griseola* race 63-63, fourteen (7%) were resistant (disease scores 1 to 3), sixty-seven (33.5%) were moderately resistant (scores 4 to 6) and 119 (59.5%) were susceptible (data not shown). The fifty bean genotypes selected for further evaluation with all the forty four races of the pathogens exhibited varying reactions and the differences in disease severity were significant ($P < 0.05$) (Table 3). None of the genotypes was resistant to all races of the pathogen. Some genotypes, however, were either resistant (scores 1 to 3) or moderately resistant (scores 4 to 6) to most of the races and only susceptible (scores 7 to 9) to a few races (Table 2). A few genotypes exhibited high levels of resistance or immunity to most of the races. For example, bean line ECAB 0754 was resistant to 40 races of the pathogen (Table 3). Eight of the genotypes (43308, ECAB 0533, ECAB 0704, ECAB 0705, ECAB 0706, ECAB 0710, ECAB 0754 and ECAB 0760) had an average severity ranging from 1.1 to 2.5% (scores 1 to 3) and were considered to be resistant (Table 3). Twenty five genotypes had an average severity score of more than 2.5, but $< 7\%$ and were considered to be moderately resistant; whereas

TABLE 2. Resistant (disease scores 1 to 3), moderate resistant (scores 4 to 6) or susceptible (scores 7 to 9) reactions of some of the bean genotypes to selected races of *Phaeoisariopsis griseola*

Bean type and genotype	<i>Phaeoisariopsis griseola</i> races and disease reactions									
	39-0	46-0	58-18	62-3	30-55	33-39	59-39	59-63	62-39	63-63
Katamani genotypes										
43308	1	1	7	1	1	1	1	1	2	4
V8017	6	1	6	1	1	7	4	1	1	4
BAT 125	2	1	7	2	1	3	1	1	1	4
V8010	1	1	6	1	7	6	1	1	1	2
BAT 1293	1	1	6	6	1	1	1	2	4	6
KAT X16	8	1	4	6	5	1	1	7	1	6
C982-79	1	1	7	3	1	8	1	6	1	4
V8025	1	1	6	1	4	3	1	7	1	4
Pintos										
ECAB 0705	1	1	6	6	1	1	1	2	1	3
K131	1	7	8	5	1	7	6	6	1	6
ECAB 0706	1	1	5	1	1	2	1	1	1	2
ECAB 0710	1	1	6	1	1	7	1	1	1	2
ECAB 0716	1	3	7	2	1	8	1	1	2	3
ECAB 0704	1	2	7	1	1	2	1	1	2	2
ECAB 0708	1	1	5	3	1	6	5	1	1	2
GLP X 92	4	6	8	6	8	8	5	5	6	8
Navys										
ECAB 0617	1	2	7	1	1	2	1	3	1	3
ECAB 0604	1	2	4	1	4	6	1	3	2	2
MEXICAN 142	1	1	9	5	1	8	1	2	2	5
BASSABEER	6	1	1	1	2	9	1	7	1	7
AWASH1	6	4	4	1	4	6	1	1	1	
Browns/Yellows										
Gofta	1	1	6	6	2	9	1	1	1	5
ECAB 0756	2	2	8	3	1	8	1	1	1	3
ECAB 0752	1	1	7	1	1	3	1	2	6	2
ECAB 0760	1	2	1	4	2	1	1	1	2	3
ECAB 0754	1	1	2	1	2	7	1	1	1	2

17 genotypes were susceptible. Bean line ECAB 0754 had the lowest average disease score (1.1%), whereas the popular bean variety, Rosecoco GLP-2 had the highest score of 19.7% (Table 3). Thirteen genotypes were resistant or moderately resistant to at least 40 of the races (Fig. 1).

All the resistant or moderately resistant genotypes were of the small-seeded bean types,

whereas the popular large-seeded beans were generally susceptible (Table 3). Among the various bean categories evaluated, pintos (small-seeded) had the highest number of resistant genotypes (Table 3). Out of the eight pinto bean genotypes tested, six were resistant or moderately resistant to at least 35 (78%) of the races (Fig. 2). Bean lines ECAB 0705, ECAB 0706, ECAB 0710

TABLE 3. Reactions of bean genotypes to forty-four races of *Phaeoisariopsis griseola*

Bean type and genotype	No. of races resistant to*	No. of races moderately resistant to*	No. of races susceptible to*	Average disease severity (%)
Katamani genotypes				
43308 (S) ^a	38	3	3	1.8
V8017 (S)	32	8	4	3.6
BAT 125 (S)	36	1	7	3.0
V8010 (S)	32	8	4	2.9
BAT 1293 (S)	24	18	2	4.0
KAT X16 (M)	16	15	13	7.8
C982-79 (S)	25	9	10	6.9
V8025 (S)	30	10	4	3.2
Kidneys				
ECAB 0241(L)	8	16	20	10.7
ECAB 0243 (L)	2	13	29	16.0
ECAB 0267 (L)	12	12	20	10.7
SELIAN 97 (L)	8	10	26	13.0
GLP-24 (L)	11	8	25	12.8
Canadian Wonder (L)	25	9	10	5.5
Red mottled				
ECAB 0019 (L)	10	13	21	12.9
Rosecoco GLP-2 (L)	0	8	36	19.7
LYAMUNGU 90 (L)	2	11	31	15.8
K132 (L)	3	11	30	16.5
ECAB 0028 (L)	9	8	27	14.3
LYAMUNGU 85 (L)	5	8	31	17.8
CAL 143 (L)	10	11	23	11.7
Small red				
Red haricot GLP 585 (S)	9	10	25	13.3
ECAB 0403 (S)	12	16	16	9.7
MASAI RED (S)	14	8	22	11.5
RED WOLAITA (S)	18	11	15	8.9
Pintos				
ECAB 0705 (S)	36	5	3	2.4
K131 (S)	17	17	10	8.1
ECAB 0706 (S)	34	8	2	2.1
ECAB 0710 (S)	34	7	3	2.3
ECAB 0716 (S)	35	1	8	3.4
ECAB 0704 (S)	35	6	3	2.4
ECAB 0708 (S)	30	9	5	3.4
Mwitmania GLP X 92 (M)	5	17	22	14.7

TABLE 3. Contd.

Bean type and genotype	No. of races resistant to*	No. of races moderately resistant to*	No. of races susceptible to*	Average disease severity (%)
Cariocas				
ECAB 0533 (S)	31	11	2	2.5
ECAB 0535 (S)	30	7	7	4.1
ZEBRA (M)	28	6	10	6.5
ECAB 0532 (S)	26	10	8	5.0
Navys				
ECAB 0617 (S)	28	15	1	3.1
ECAB 0604 (S)	26	12	6	4.9
MEXICAN 142 (S)	30	8	6	4.4
BASSABEER (S)	21	9	14	10.3
AWASH 1 (S)	22	15	7	5.9
Browns/Yellows				
GOFTA (M)	29	9	6	5.0
ECAB 0756 (S)	30	8	6	4.7
ECAB 0752 (S)	33	5	6	3.0
ECAB 0760 (S)	36	6	2	1.9
ECAB 0754 (S)	40	3	1	1.1
Sugars				
ECAB 0807 (L)	29	4	11	5.4
SUG 73 (L)	11	15	18	12.0
ECAB 0810 (L)	29	7	8	6.1
LSD _(P=0.05)				4.5
S.E				2.8
CV%				23.5

a: S = small-seeded; M = medium-seeded; L = large-seeded

* Refers to the number of *Phaeoisariopsis griseola* races that a bean genotype was resistant, moderately resistant or susceptible to.

and ECAB 0704 (all small-seeded) were resistant or moderately resistant to more than 40 (91%) of the races. Mwitmania GLP-X.92, a popular medium-seeded pinto bean variety, was susceptible to most of the races and only exhibited resistance to five races (Table 3). The small-seeded brown/yellow bean types also exhibited high levels of resistance and all the five genotypes tested from this category were resistant to at least 38 races (Fig. 2). Of these five genotypes, ECAB 0754 was resistant or moderately resistant to all races except

Mesoamerican race 33-39, whereas the least resistant genotypes (Gofta, ECAB 0756 and ECAB 0752) were susceptible to only six races each (Table 3). Among the sugars category (large-seeded types), ECAB 0807 and ECAB 0810 were resistant to 29 races each and susceptible to 11 and 8 races, respectively (Table 3). All the carioca and navy genotypes tested were resistant to at least 30 races. Navy bean genotype ECAB 0617 (small-seeded) was resistant or moderately resistant to all races except race 58-18, whereas ECAB 0533 (small-seeded carioca) was

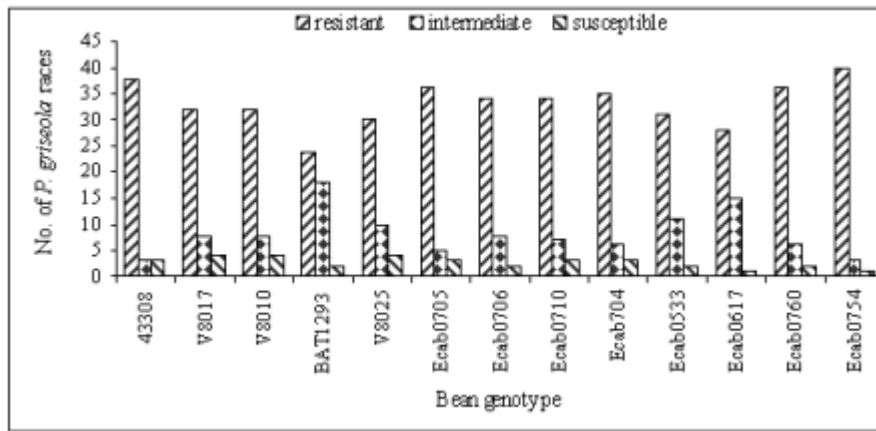


Figure 1. Reaction of thirteen bean genotypes that were resistant to at least forty races of *Phaeoisariopsis griseola*.

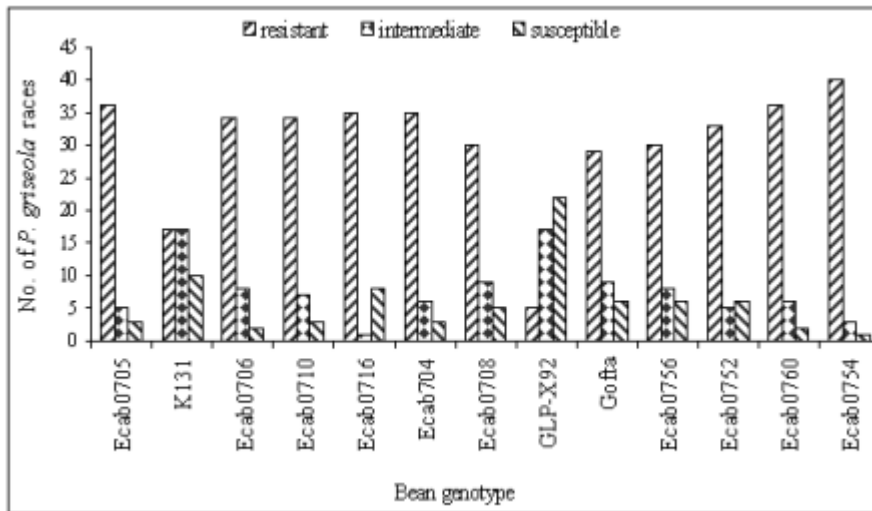


Figure 2. Reactions of small- and medium-seeded pinto and brown/yellow bean genotypes to races of *Phaeoisariopsis griseola*.

susceptible to only two races. In these two bean categories, Bassabeer was the most susceptible, succumbing to 14 races of the pathogen.

The small-seeded bean genotypes from NDFRC Katumani that were tested in this study showed high levels of resistance to different races of *P. griseola* (Fig. 3). All the eight genotypes were resistant or moderately resistant to at least 30 (68%) of the races. Five of the genotypes (43308, V8010, V8017, V8025 and BAT 1293) were resistant to at least 40 races, with an average ALS severity score of less than 3.6% (Table 3). Bean

genotypes BAT 1293 and 43308 were susceptible to only two and three races, respectively whereas V8017, V8010 and V8025 succumbed to four races each. Only three of the genotypes (medium-seeded KAT X16, small-seeded BAT 125 and small-seeded C982-79) were susceptible to more than five races. The commonly grown large-seeded bean genotypes (kidneys and red mottled) were generally susceptible (Fig. 4). The most popular variety, Rosecoco GLP-2 (large seeded) was susceptible to most of the races with an average severity score of 19.7% and was only

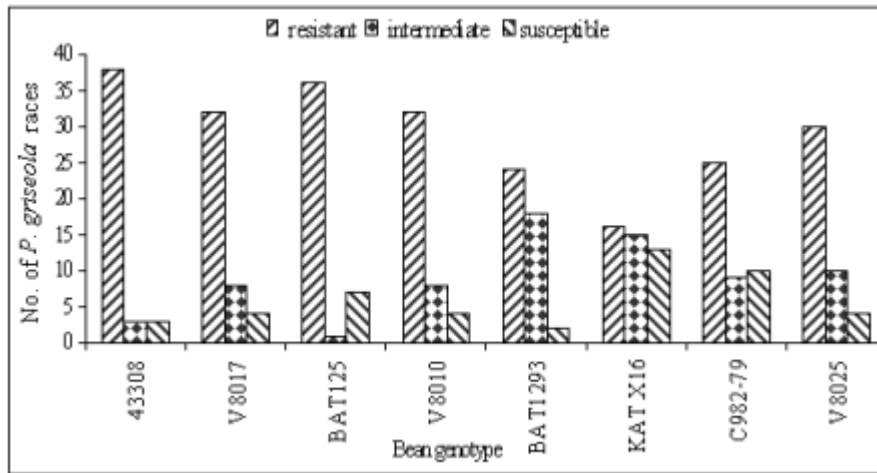


Figure 3. Reactions of small- and medium-seeded bean genotypes from NDFRC Katumani to races of *Phaeoisariopsis griseola*.

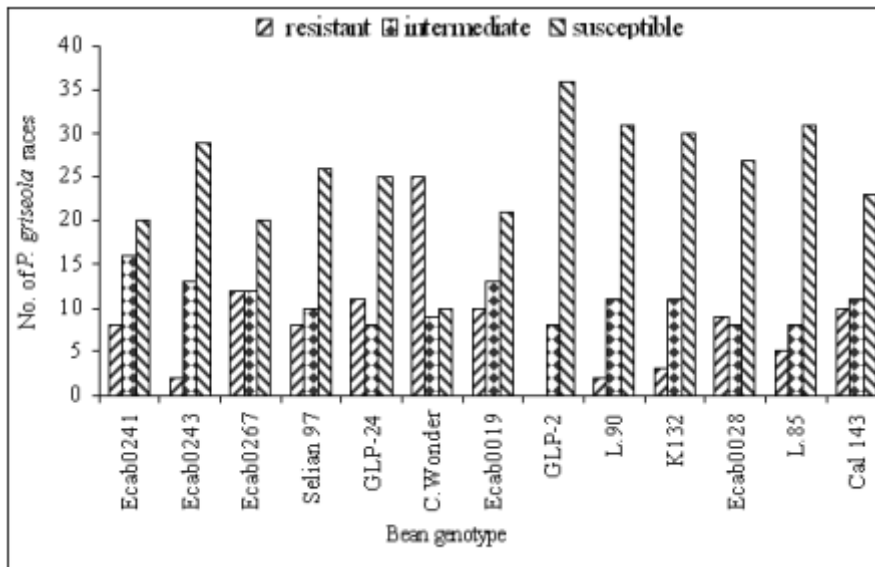


Figure 4. Reaction of large-seeded kidney and red mottled bean genotypes to races of *Phaeoisariopsis griseola*.

moderately resistant to eight races. Canadian Wonder GLP-24 was the best performing large-seeded variety, being resistant or moderately resistant to 34 races. The small-red bean types also showed high levels of susceptibility to most races of *P. griseola* (Table 3). Red Haricot GLP 585, a popular small-seeded red bean, was resistant or moderately resistant to only 19 races of the pathogen.

DISCUSSION

This study revealed a wide variation in the reactions of bean genotypes to the forty four races of *P. griseola* occurring in Kenya. None of the genotypes evaluated was resistant to all races of the pathogen, indicating a high complexity of the pathogen population. However, thirteen genotypes were resistant or moderately resistant

to at least 40 of the races. Bean genotypes, ECAB 0754 and ECAB 0617, were resistant or moderately resistant to all races except Mesoamerican race 33-39 and Afro-Andean race 58-18, respectively. These genotypes are, therefore, good sources of resistance to ALS and can be complimented with genes from other resistant genotypes to build-up durable resistance. For example, resistance to race 33-39 and race 58-18, the only races that induced susceptible reactions in genotypes ECAB 0754 and ECAB 0617, respectively, can be obtained from ECAB 0760 which showed high levels of resistance to these two races.

All the bean genotypes showing high levels of resistance to angular leaf spot were of the small-seeded types with very little resistance among the popular large-seeded genotypes, indicating the importance of gene pool type in the search for resistance to ALS. The popular large-seeded genotypes were generally susceptible, with Rosecoco GLP-2 (the commonly grown variety in Kenya) being the most susceptible.

These results are consistent with the report by Pastor-Corrales *et al.* (1998) who observed that of the 19 bean accessions that were intermediate or resistant to ALS, 15 were small or medium-sized while only four were large-seeded. These results are also in support of earlier observations from CIAT (1996) that the resistant bean accessions, often without any visible ALS symptoms, are the small-seeded genotypes of Middle American origin. Liebenberg and Pretorius (1997) also reported that most of the known sources of ALS resistance are evidently small-seeded bean varieties and that very little resistance exists among the popular large-seeded varieties in Southern Africa.

One way of circumventing the lack of resistance in well-adapted bean varieties of market types preferred by farmers and consumers would be to pyramid complementary resistance genes into these varieties. Pyramiding complementary resistance genes into appropriate backgrounds is a strategy with potential for maintaining long-term durable disease resistance (Young and Kelly, 1996; Mahuku *et al.*, 2009). This has been demonstrated in bean anthracnose differential genotype G2333, which contains three

resistance genes and only one pathotype of *Colletotrichum lindemuthianum* has been found to infect it (Pastor-Corrales *et al.*, 1994; Young *et al.*, 1998). The rationale behind gene stacking is that combining as many resistance genes in the same background as is practical, makes it statistically very difficult for a pathotype to evolve, that would overcome all the resistance genes simultaneously (Mahuku *et al.* 2009). Among the bean types evaluated in the present study, the small- to medium-seeded were found to possess high levels of resistance to ALS. These bean types are less popular with farmers and consumers in Kenya but can be used as sources of resistance to improve the popular, but susceptible, varieties.

Bean genotypes identified in this study to possess varying levels of resistance can be promoted for inclusion in farmers' varietal mixtures to boost management of ALS. Pyndji and Trutmann (1992) demonstrated that ALS could be controlled in farming systems where local bean mixtures are used by supplementing them with resistant varieties. Wolfe (1985) noted that host mixtures may restrict the spread of pathogens and diseases considerably, provided the varieties differ in their susceptibility. Use of an assortment of the resistant genotypes by farmers would ensure the presence of different sources of resistance to ALS in a region. The physical presence of a resistant variety would provide farmers with some assurance of yields during a favourable growing season. It has been shown that adding high yielding ALS resistant varieties to local farmer bean mixtures can result in dry bean yields comparable to those obtained from the high yielding resistant variety cultivated alone (Trutmann and Pyndji, 1994). Thus, farmers should be encouraged to diversify their bean varietal types to also include the currently commercially less popular seed types that may possess resistance to angular leaf spot.

Bean genotypes identified in this study under greenhouse conditions as potential sources of resistance should be tested at various angular leaf spot hot spots to establish their levels of resistance under field conditions. Field sites with the highest *P. griseola* population diversity should be selected where the varieties can be

tested against the widest range of natural inoculum. The wide pathogenic variability in the ALS pathogen population in Kenya implies that using a single location to test varieties for resistance is not sufficient because different races occur in different locations (Wagara *et al.*, 2005).

Because none of the bean genotypes evaluated in this study was resistant to all races of *P. griseola*, screening of more bean germplasm should be intensified in an effort to identify new and better sources of resistance to ALS. Due to the high pathogenic variability in the ALS pathogen, it is desirable to use broader sources of resistance. The fact that eight and five of the bean genotypes obtained from ECABREN and NDFRC Katumani, respectively, were resistant or moderately resistant to most races of *P. griseola* indicates that screening of more genotypes from these and other bean improvement programmes would be useful. Evaluations by Pastor-Corrales *et al.* (1998) revealed that 89 bred bean lines were resistant or intermediate resistant despite the fact that only two (MAR 1 and MAR 3) were deliberately bred for ALS resistance. Screening should especially target bean genotypes of the small-seeded gene pool which has been shown to possess good levels of resistance to ALS (CIAT, 1996). It would also be worth while to evaluate the various common bean landraces grown by farmers in different regions for resistance. Germplasm screening for ALS resistance should also be extended to wild common bean populations, which may harbour sources of resistance. Screening of other *Phaseolus* spp. such as *P. costaricensis*, *P. coccineus*, *P. polyanthus*, *P. acutifolius* and *P. parvifolius* that can be hybridised with common bean has been recommended (Pastor-Corrales *et al.*, 1998). High levels of resistance to ALS have been found in *P. coccineus* and *P. polyanthus* (Mahuku *et al.*, 2003), confirming earlier reports that the secondary gene pool is an important source of useful traits (Bosogoro *et al.*, 1999). Sources of resistance to other diseases and pests (e.g. resistance to Aschochyta, common bacterial blight, and bean golden mosaic virus) have been found in the secondary gene pools (Beebe and Pastor-Corrales, 1991). The effective strategy of

breeding for ALS resistance would be to hybridise those bean varieties that possess broad and complementary genes for resistance. This should be followed by field screening and selection in sites where the widest range of *P. griseola* populations are endemic. ALS resistance lines thus developed would then be tested in the greenhouse against a more diverse group of isolates that cannot, for various reasons, be used in field inoculations.

ACKNOWLEDGEMENT

Financial support for this work was provided by The Rockefeller Foundation (Grant 2001 FS 030). We gratefully acknowledge the Pan-Africa Bean Research Alliance (PABRA) through its Eastern and Central Africa Bean Research Network (ECABREN) and National Dryland Farming Research Centre (NDFRC) Katumani for providing the bean genotypes used in this study.

REFERENCES

- Allen, D.J., Dessert, M., Trutman, P. and Voss, J. 1989. Common beans production in Africa and their constraints. pp. 9-32. In: Schwartz H.F. and Pastor-Corrales M.A. (Eds.). Bean Production Problems in the Tropics. CIAT, Cali, Colombia.
- Beebe, S.E. and Pastor-Corrales, M.A. 1991. Breeding for disease resistance. pp. 561-618. In: van Schoonhoven, A. and Voyses, O. (Eds.). Common bean research for crop improvement. CIAT, Cali, Colombia.
- Buruchara, R.A. 1983. Determination of pathogenic variation in *Isariopsis griseola* Sacc. and *Pseudomonas syringae* pv *phaseolicola* (Burk, 1926) Young, Dye and Walkie 1978. PhD Thesis, University of Nairobi, Kenya. 188pp.
- Busogoro, J.P., Jijakli, M.H. and Lepoivre, P. 1999. Virulence variation and RAPD polymorphism in African isolates of *Phaeoisariopsis griseola* (Sacc.) Ferr., the causal agent of angular leaf spot of common bean. *European Journal of Plant Pathology* 105:559-569.
- Caixeta, E.F., Borem, A., Alzate-Marin, A.L., De Azevedo Fagundes, S., De Morais Silva, M.G.,

- de Barros, E.G and Moreira, M.A. 2005. Allelic relationships for genes that confer resistance to angular leaf spot in common bean. *Euphytica* 145:237-245.
- Carvalho, G.A., Paula, T.J., Alzate-Marin, L., Nietsche, S., de Barros, E.G and Moreira, M.A. 1998. Inheritance of resistance to angular leaf spot of common bean in AND 277 to race 63-23 of *Phaeoisariopsis griseola* and identification of a RAPD marker linked to the resistance gene. *Fitopatologia Brasilia* 23:482-485.
- CIAT (Centro Internacional de Agricultura Tropical), 1996. Working document No. 162. Bean Program Annual Report for 1994, CIAT, Cali, Colombia. pp. 31-39.
- FAO, 2007. FAO Statistics (FAOSTAT). <http://faostat.fao.org/site/567/DesktopDefault.aspx?PageID=567>. (Accessed 12 April 2009).
- Ferreira, C.F., Carvalho, G.A., Nietsche, S., Paula Jr, T.J., Barros, E.G and Moreira, M.A. 2000. Inheritance of angular leaf spot resistance in common bean and identification of a RAPD marker linked to a resistance gene. *Crop Science* 40:1130-1133.
- Gethi, M., Mureithi, F.M., Macharia, N. and Njoroge, K. 1997. Maize/bean intercropping system in medium potential areas of Kenya: Farmers practice and research challenges. *African Crop Science Conference Proceedings* 3:756-770.
- Guzman, P., Gepts, P., Temple, S., Mkandawire, A.B.C. and Gilbertson, R.L. 1999. Detection and differentiation of *Phaeoisariopsis griseola* isolates with the polymerase chain reaction and group-specific primers. *Plant Disease* 83:37-42.
- Liebenberg, M.M. and Pretorius, Z.A. 1997. A review of angular leaf spot of common bean (*Phaseolus vulgaris* L.). *African Plant Protection* 3:81-106.
- Mahuku, G.S., Henriquez, M.A., Munoz, J. and Buruchara, R.A. 2002a. Molecular markers dispute the existence of the Afro-Andean group of the bean angular leaf spot pathogen, *Phaeoisariopsis griseola*. *Phytopathology* 92:580-589.
- Mahuku, G.S., Jara, C., Cuasquer, J.B. and Castellanos, G. 2002b. Genetic variability within *Phaeoisariopsis griseola* from Central America and its implication for resistance breeding of common bean. *Plant Pathology* 51:594-604.
- Mahuku, G.S., Jara, C., Cajiao, C. and Beebe, S. 2003. Sources of resistance to angular leaf spot (*Phaeoisariopsis griseola*) in common bean core collection, wild *Phaseolus vulgaris* and secondary gene pool. *Euphytica* 130:303-313.
- Mahuku, G.S., Montoya, C., Henríquez, M.A., Jara, C., Teran, H. and Beebe, S. 2004. Inheritance and characterization of the angular leaf spot resistance gene in the common bean accession, G 10474 and identification of an AFLP marker linked to the resistance gene. *Crop Science* 44:1817-1824.
- Mahuku, G.S., Iglesias, A.M. and Jara, C. 2009. Genetics of angular leaf spot resistance in the Andean common bean accession G5686 and identification of markers linked to the resistance genes. *Euphytica* 167:381-396.
- Otsyula, R.M., Ajanga, S.I., Buruchara, R.A. and Wortman, C.S. 1998. Development of an integrated bean root rot control strategy for western Kenya. *African Crop Science Journal* 6:61-67.
- Pastor-Corrales, M.A., Erazo, O.A., Estrada, E.I. and Singh, S.P. 1994. Inheritance of anthracnose resistance in common bean accession G 2333. *Plant Disease* 78:959-962.
- Pastor-Corrales, M.A., Jara, C. and Singh, S.P. 1998. Pathogenic variation in, sources of, and breeding for resistance to *Phaeoisariopsis griseola* causing angular leaf spot in common bean. *Euphytica* 103:161-171.
- Pyndji, M.M. and Trutmann, P. 1992. Managing angular leaf spot on common bean in Africa by supplementing farmer mixtures with resistant varieties. *Plant Disease* 76(11):1144-1147.
- Sartorato, A. 1989. Resistancia vertical e horizontal do feijoeiro comun (*Phaseolus vulgaris* L.) a *Isariopsis griseola* Sacc. Ph. D. Dissertation. Universidade de Sao Paulo, Piracicaba, SP. Brazil.
- Stenglein, S., Ploper, L.D., Vizgarra, O. and Balatti, P. 2003. Angular leaf spot: A disease caused by the fungus *Phaeoisariopsis griseola*

- (Sacc.) Ferraris on *Phaseolus vulgaris* L. *Advances in Applied Microbiology* 52:209-243.
- Trutmann, P. and Pyndji, M.M. 1994. Partial replacement of local common bean mixtures by high yielding angular leaf spot resistant varieties to conserve local genetic diversity while increasing yield. *Annals of Applied Biology* 125:45-52.
- Van Schoonhoven, A. and Pastor-Corrales, M.A. 1987. Standard system for the evaluation of bean germplasm. C.I.A.T., Cali, Colombia.
- Voysest, O. 2000. Mejoramiento Genético del fríjol (*Phaseolus vulgaris* L.). CIAT, Colombia. 195pp.
- Wagara, I.N. 1996. Pathogenic variability in *Phaeoisariopsis griseola* (Sacc.) Ferr. and resistance of *Phaseolus vulgaris* L. to angular leaf spot. Msc. Thesis, University of Nairobi, Kenya. 108pp.
- Wagara, I.N., Mwang'ombe, A.W., Kimenju, J.W., Buruchara, R.A., Jamnadass, R. and Majiwa, P.A.O. 2004. Genetic diversity of *Phaeoisariopsis griseola* in Kenya as revealed by AFLP and group-specific primers. *Journal of Phytopathology* 152:1-8.
- Wagara, I.N., Mwang'ombe, A.W., Kimenju, J.W. and Buruchara, R.A. 2005. Virulence, variability and physiological races of the angular leaf spot pathogen *Phaeoisariopsis griseola* in Kenya. *African Plant Protection* 11:23-31.
- Wolfe, M.S. 1985. The current status and prospects of multiline and variety mixtures for disease resistance. *Annual Review of Phytopathology* 23:251-273.
- Wortmann, C.S., Kirkby, R.A., Elude, C.A. and Allen, D.J. 1998. Atlas of common bean (*Phaseolus vulgaris* L.) production in Africa. CIAT publication No. 297.
- Young, R.A. and Kelly, J.D. 1996. Characterization of the genetic resistance to *Colletotrichum lindemuthianum* in common bean differential varieties. *Plant Disease* 80:650-654.
- Young, R.A., Melotto, M., Nodari, R.O. and Kelly, J.D. 1998. Marker-assisted dissection of the oligogenic anthracnose resistance in the common bean variety, G2333. *Theoretical and Applied Genetics* 96:87-94.