

## Full Length Research Paper

# Prevalence of *bla<sub>SHV</sub>* genes in clinical isolates of *Klebsiella pneumoniae* at Saint Camille medical Center in Ouagadougou. Isolation of *bla<sub>SHV11</sub>*-like gene

Boukaré Zeba<sup>1\*</sup> Pere Jacques Simporé<sup>2</sup>, Odile G. Nacoulma<sup>1</sup>, Jean-Marie Frere<sup>3</sup>

<sup>1</sup>Laboratoire de Biochimie et de Chimie appliquée/ Enzymologie. UFR-SVT/ Université de Ouagadougou/ Burkina Faso.

<sup>2</sup>Saint Camille medical center/ Ouagadougou/ Burkina Faso.

<sup>3</sup>Enzymologie/ Centre d'ingenierie des protéines / Ulg/ Belgique.

Accepted 13 August, 2004

**Five bacterial strains (4 *Klebsiella pneumoniae* and 1 *Escherichia coli*) representative of pathogenic species and resistant to  $\beta$ -lactam antibiotics are investigated to isolate the genes responsible of  $\beta$ -lactamase activity. The use of engineering techniques enables us to show the widespread of *bla<sub>SHV</sub>* genes particularly in clinical isolates of *K. pneumoniae*. Our results highlighted an atypical *bla<sub>SHV-11</sub>* gene.**

**Keys words:**  $\beta$ -Lactamases, *Klebsiella pneumoniae*, *bla<sub>SHV</sub>* gene, Saint Camille medical centre, Ouagadougou.

## INTRODUCTION

The major mechanism of bacterial resistance to  $\beta$ -lactam antibiotics is the production of  $\beta$ -lactamases. These enzymes are able to inactivate the  $\beta$ -lactam antibiotic by hydrolysing the  $\beta$ -lactam ring (Abraham and Chain, 1940; Frère et al, 1991; Reid et al, 1987). It is reported that up 90% ampicillin resistance is due to the production of TEM-1  $\beta$ -lactamase in *Escherichia coli* (Livermore, 1995) and SHV-1  $\beta$ -lactamase in *Klebsiella pneumoniae* (Tzouveleki and Bonomo, 1999). Many bacteria commonly isolated from human biological specimens like *E. coli*, *Klebsiella pneumoniae*, *Shigella spp.*, and *Salmonella spp.* responsible for infection of gastroenteritis, urinary disease and the inflammation of the ear (children) were collected at the Saint Camille medical center of Ouagadougou and these strains exhibit

an important  $\beta$ -lactamase activity against the usual  $\beta$ -lactam-antibiotics (Zeba et al., 2003). The present work is an attempt to establish what types of  $\beta$ -lactamase genes are occurring in our area may be related to these activities. Therefore, one *E. coli* and 4 *K. pneumoniae* strains were screened. This is the first epidemiological study at this level, carried in Ouagadougou and Burkina Faso.

## MATERIALS AND METHODS

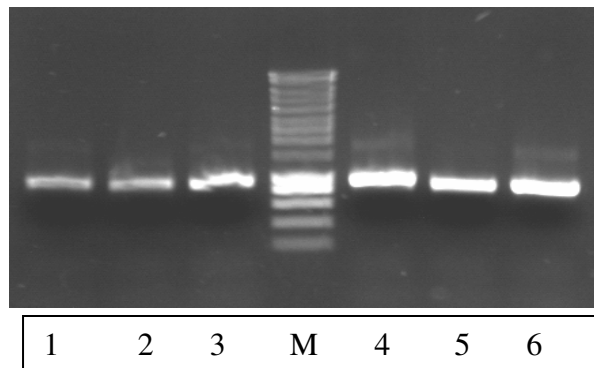
### Bacterial strains.

*K. pneumoniae* No. 291, 312, 392, 1201 and *E. coli* No.1004 were isolated from clinical specimens (faeces, urine, pus etc.) and were identified with API 20 system (Bio Merieux France).

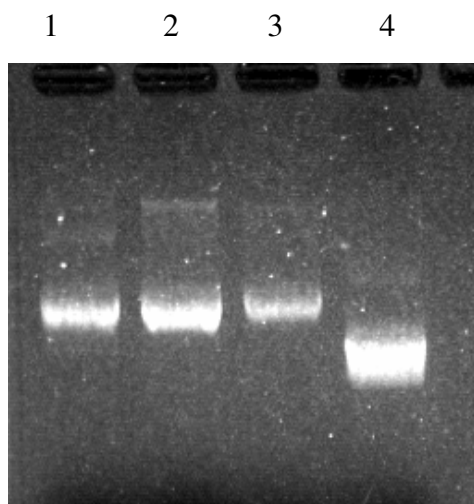
### Culture conditions

These clinical wild strains were grown on trypticase soy agar (Difco) plates (solid medium) or in Luria Bertani (LB Difco).

\*Corresponding author. E-mail: [b\\_zeba@yahoo.fr](mailto:b_zeba@yahoo.fr). Fax: (226) 33 06 08. Tel: (226)29 08 33.



**Figure 1.** Purified PCR fragments obtained with SHV primers. Lane 1: Amplified fragment from shot gun clone BgIII of *K. pneumoniae* N°291. Lane 2: Amplified fragment from genomic DNA of *K. pneumoniae* N° 312. Lane 3: Amplified fragment from shot gun clone BamHI of *K. pneumoniae* N° 312. M: DNA marker Smart Ladder. Lane 4: Amplified fragment from shot gun clone BamHI of *K. pneumoniae* N°312. Lane 5: Amplified fragment from shot gun clone BamHI of *K. pneumoniae* N° 392. Lane 6: Amplified fragment from shot gun clone Sau3AI of *K. pneumoniae* N° 1201. Cloning these fragments into pGEM-T Easy vector provided three recombinant plasmids: Fragment of lane 2 gave clone 2. Fragment of lane 5 gave clone named clone 5. Fragment of lane 6 gave clone 6. Recombinants 2, 5 and 6 are now reported on figure 2 under N° 1, 2 and 3 respectively.



**Figure 2.** PCR fragments cloned into pGEM-T Easy vector. These fragments were obtained by amplification of genomic DNAs or shotgun clones with primers for SHV. Lane 1: Amplified fragment from genomic DNA of *K. pneumoniae* N° 312 cloned into pGEM-T Easy. Lane 2: Amplified fragment from shotgun clone BamHI fragment of *K. pneumoniae* N°392 cloned into pGEM-T Easy. Lane 3: Amplified fragment from shotgun clone Sau3AI of *K. pneumoniae* N° 1201 cloned into pGEM-T Easy. Lane 4: pGEM-T Easy without insert (for comparison). Sequencing of fragments from 1 and 2 gave *bla<sub>SHV-1</sub>* gene and *bla<sub>SHV-11</sub>* like gene respectively.

The *E. coli* competent DH5- $\alpha$  cells used in transformation experiments were grown in SOC medium which allow quick recuperation of cells and ensure maximum transformation efficiency.

### Shotgun cloning

Genomic DNAs of the strains were extracted and purified by using Wizard kits of genomic DNA purification (Wizard genomic DNA purification kit, Promega corporation, Madison, WI, USA). Different types of Fragments from genomic DNAs were obtained by using specific different restriction enzymes (Sau3AI, BamHI, BgIII, EcoRI etc.) These fragments were ligated into cloning vector PK18, carrying kanamycin resistance gene and transformed into *E. coli* competent DH5- $\alpha$  cells. The PK18 recombinant clones were selected on plates containing 50  $\mu$ g of kanamycin per ml + 60 mM IPTG + 40  $\mu$ g of Xgal per ml (KIX plates).

### PCR

The PCR is both carried out to detect the  $\beta$ -lactamase genes or to amplify and isolate them (Mabilat and Goussard (1993), Brinas et al. (2002). PCR amplifications of the *bla<sub>TEM</sub>*, *bla<sub>SHV</sub>*, and *bla<sub>ampC</sub>* genes were carried out using specific primers pairs (for example SHVF and SHVR, TEMF and TEMR, ampCF and ampCR) for amplification of correspondent genes (Sutcliffe, 1978; Mercier and Levesque, 1990) when the template is genomic DNA or shotgun clones. These primers were obtained from Eurogentec Bel. S.A. The PCR products were ligated into pGEM-T Easy Vector carrying ampicillin resistance gene and as previously, transformed into *E. coli* competent DH5- $\alpha$  cells. The correspondents clones were always selected on plates containing 50 $\mu$ g of ampicillin per ml + 60 mM IPTG and 40  $\mu$ g per ml X-gal (AIX plates).

### RESULTS AND DISCUSSIONS

Four recombinant plasmids carrying ampicillin-resistant genes were recovered from genomic DNAs of strains No. 291, 312, 392 and 1201. The attempt to obtain recombinant plasmids from strain 1004 DNA with this approach failed.

The PCR with primers specific for the *bla<sub>TEM</sub>*, *bla<sub>SHV</sub>*, and *bla<sub>AMP</sub>* genes were performed both directly on genomic DNAs and on recombinant plasmids. Positive PCR results were obtained from recombinant plasmids and from genomic DNA 291, 312, 392 and 1201 with primer of SHV (Figure 1). Positive PCR result was obtained with genomic DNA of strain N°. 1004 with primer TEM (result not reported). PCR with primer AmpC was negative on all the strains investigated.

These results clearly point out that the *K. pneumoniae* strain N° 291, 312, 392 and 1201 harbour *bla<sub>SHV</sub>* genes and the *E. coli* N°1004 have *bla<sub>Tem</sub>* gene.

Among the 4 identified *bla<sub>SHV</sub>* genes, 2 were isolated by cloning PCR products into pGEM-T Easy Vector (Figure 2) but only two were successfully sequenced. One is a typical *bla<sub>SHV-1</sub>* gene [clone 1 from figure 2 (coming from fragment 2 of Figure 1)]. The second is the *bla<sub>SHV-11</sub>* -like gene [clone 2 from Figure 2

```

shv-11 1 atgcggttatattcgctgtgtattatctccctgttagccaccctgccgctggcggtacac 60
M R Y I R L C I I S L L A T L P L A V H
clone 5 1 ATGCGTTATATTGCGCTGTGATTATCTCCCTGTTAGCCACCCTGCCGCTGGCGGTACAC 60
M R Y I R L C I I S L L A T L P L A V H

shv-11 61 gccagcccgagccgcttgagcaaatatacaaaagcgaagccagctgtcgggcccgcgta 120
A S P Q P L E Q I K Q S E S Q L S G R V
clone 5 61 GCCAGCCCGAGCCGCTTGAGCAAATATAACAAAGCGAAAGCCAGCTGTGCGGCCGCGTA 120
A S P Q P L E Q I K Q S E S Q L S G R V

shv-11 121 ggcgatgatagaaatggatctggccagcggcgcagcgtgaccgcctggcgccgatgaa 180
G M I E M D L A S G R T L T A W R A D E
clone 5 121 GGCATGATAGAAATGGATCTGGCCAGCGGCCGACGCTGACCGCTGGCGGCCGATGAA 180
G M I E M D L A S G R T L T A W R A D E

shv-11 181 cgctttcccatgatgagcacctttaaagttagtgcctctgcggcgcagtgctggcggggtg 240
R F P M M S T F K V V L C G A V L A R V
clone 5 181 CGCTTTCCCATGATGAGCACCTTTAAAGTAGTGCCTCTGCGGCGCAGTGCTGGCGGGGTG 240
R F P M M S T F K V V L C G A V L A R V

shv-11 241 gatgccggtgacgaacagctggagcgaagatccactatcgccagcaggatctggtggac 300
D A G D E Q L E R K I H Y R Q Q D L V D
clone 5 241 GATGCCGGTGACGAACAGCTGGAGCGAAAGATCCACTATCGCCAGCAGGATCTGGTGGAC 300
D A G D E Q L E R K I H Y R Q Q D L V D

shv-11 301 tactcggcgtcagcgaaaaacatcttgccgacggcatgacggtcggcgaactctgcgcc 360
Y S P V S E K H L A D G M T V G E L C A
clone 5 301 TACTCGCCGGTCAGCGAAAAACACCTTGCCGACGGCATGACGGTCGGCGAACTCTGTGCC 360
Y S P V S E K H L A D G M T V G E L C A

shv-11 361 gccgccattaccatgagcgataaacagcggcccaatctgctgctggccaccgtcggcggc 420
A A I T M S D N S A A N L L L A T V G G
clone 5 361 GCCGCCATTACCATGAGCGATAAACAGCGCCCAATCTGCTGCTGGCCACCGTCGGCGGC 420
A A I T M S D N S A A N L L L A T V G G

shv-11 421 cccgcaggattgactgcctttttgcccagatcggcgacaacgctcaccgccttgaccgc 480
P A G L T A F L R Q I G D N V T R L D R
clone 5 421 CCCGCAGGATTGACTGCCTTTTGGCCAGATCGGCGACAACGTCACCCGCTTGACCGC 480
P A G L T A F L R Q I G D N V T R L D R

shv-11 481 tgggaaacggaactgaatgaggcgtctcccggcgacgcccgcgacaccactaccccggcc 540
W E T E L N E A L P G D A R D T T T P A
clone 5 481 TGGGAAACGGAACGAATGAGGCGCTTCCCGGCGACGCCCGGACACCCTACCCCGGCC 540
W E T E L N E A L P G D A R D T T T P A

shv-11 541 agcatggccggacccctgocgaagctgctgaccagccagcgtctgagcgcccgttcgcaa 600
S M A A A T L R K L L T S Q R L S A R S Q
clone 5 541 AGCATGGCCGGACCCCTGCGCAAGCTGCTGACCAGCCAGCGTCTGAGCGCCCGTTCGCAA 600
S M A A A T L R K L L T S Q R L S A R S Q

shv-11 601 cggcagctgctgagtgatggtggaagatcgggtcgcgggaccgttgatccgctccgtg 660
R Q L L Q W M V D D R V A G P L I R S V
clone 5 601 CGGCAGCTGCTGACGATGGTGGACGATCGGGTCGCGGACCGTGTGATCCGCTCCGTG 660
R Q L L Q W M V D D R V A G P L I R S V

shv-11 661 ctgccggcgggctggtttatcgccgataagaccggagctggcgaacggggtgocgocggg 720
L P A G W F I A D K T G A G E R G A R G
clone 5 661 CTGCCGGCGGGCTGTTTATCGCCGATAAGACCGGAGCTGGCGAACGGGTTGCGCGGG 720
L P A G W F I A D K T G A G E R G A R G

shv-11 721 attgtgcctgcttggcccgaataacaaagcagagcgcattgtggtgatttatctgccc 780
I V A L L G P N N K A E R I V V I Y L R
clone 5 721 ATTGTGCCCTGCTTGGCCGAATAACAAAGCAGAGCGCATCGTTGTTGATTATCTGCGG 780
I V A L L G P N N K A E R I V V I Y L R

shv-11 781 gatacggcggcagatggccgagcgaatcagcaaatcgccgggatcggcgccggcgtg 840
D T P A S M A E R N Q Q I A G I G A A L
clone 5 781 GATACGGCGGCAGCATGGCCGAGCGAAATCAGCAAATCGCCGGGATCGGCGCGGCGCTG 840
D T P A S M A E R N Q Q I A G I G A A L

shv-11 841 atcgagcactggcaacgctaa 861
I E H W Q R *
clone 5 841 ATCGAGCACTGGCAACGCTAA 861

```

**Figure 3.** Alignment between typical *bla* *SHV-11* gene and the sequence of clone 5 obtained by PCR amplification of BamHI from *K. pneumoniae* No. 392.

(coming from fragment 5 of Figure 1)]. An attempt to sequence fragment N°3 of Figure 2 (coming from fragment 6 of Figure 1) failed.

Substrate profiles of  $\beta$ -lactamase from eleven *K. pneumoniae* genes and those currently studied (Zeba et al, 2003) indicate a close behavioural similarity in their spectral activity. These phenotype similarities can be related to those of the genotypes. Thus the *bla*<sub>SHV</sub> gene may be common among *K. coli* species. Our results also indicate the existence of parental gene of *bla*<sub>SHV</sub> (*bla*<sub>SHV-1</sub>) on clinical wild strains of *K. pneumoniae* in Ouagadougou (Burkina Faso) and highlight an atypical *bla*<sub>SHV11</sub> gene. This gene of 861 bp (clone 2, Figure 3) was isolated from *K. pneumoniae* N°392. It is not identical with *bla*<sub>SHV-11</sub> genes available in gene Bank (NCBI-DB). The nucleotide, alignment of *bla*<sub>SHV-11</sub> gene and that of clone 5 reveals substitutions at position 324 (cytosine replace thymine), 357 (thymine replace cytosine), 762 (cytosine replace thymine) and 795 (cytosine replace thymine). It appears that the change always occurs between cytosine and thymine. Therefore, on the basis of nucleotide sequences, the two genes (classical *bla*<sub>SHV-11</sub> and clone 5) are slightly different, but the translation of the two genes yields the same variant SHV-11  $\beta$ -lactamase. Our investigations are continuing to establish clearly the different types of *bla*<sub>SHV</sub> genes encountered in Burkina Faso. The PCR analysis of the single *E. coli* detects *bla*<sub>TEM</sub> type gene. We hope to further investigate these and similar genes in subsequent studies.

## ACKNOWLEDGEMENTS

This work was conducted in the framework of the project entitled "Enzymes de la résistance bactérienne aux antibiotiques au Burkina Faso", supported by la Coopération Universitaire au Développement (CUD) du royaume de Belgique. We kindly thank this Institution. We also thank Dr. Colette Duez, students André Piette and Michael Delmarcelle for their technical contributions.

## REFERENCES

- Abraham EP, Chain E (1940). An Enzyme from Bacteria able to Destroy Penicillin. Nature (London) 146: 837.
- Brinas L, Zarazaga M, Saenz Y, Ruiz-Larrea F, Torres C (2002).  $\beta$ -lactamases in Ampicillin-resistant *Escherichia coli* Isolates from Foods, Humans, and Healthy animals. Antimicrob. Agents Chemother. 46: 3156-3163.
- Frère J-M, Joris B, Granier B, Matagne A, Jacob F, Bourguignon-Bellefroid C (1991). Diversity of the mechanisms of resistance to  $\beta$ -lactam antibiotics. Res. Microbiol. 142: 705-710.
- Livermore DM (1995).  $\beta$ -lactamases in laboratory and clinical resistance. Clin. Microbiol. Rev. 8: 557-584.
- Mabilat C, Goussard S (1993). PCR detection and identification of genes for extended-spectrum  $\beta$ -lactamases. In Persing et al.(eds) Diagnostic Molecular Microbiology: Principle and Applications, American Society for Microbiology, Washington, DC pp. 553-63.
- Mercier J, Levesque RC (1990). Cloning of SHV-2, OHIO-1, and OXA-6 $\beta$ -lactamases and cloning and sequencing of SHV-1 $\beta$ -lactamase. Antimicrob. Agents Chemother. 34: 1577-1583.
- Reid AJ, Simpson IN, Harper PB, Amyes SGB (1987). Identification and characterization of a novel  $\beta$ -lactamase TLE-2, encoded by plasmid pUK 702 FEMS Microbiol. Lett. 44: 125-128.
- Sutcliffe JG (1978). Nucleotide sequence of the ampicillin resistance gene of *Escherichia coli* plasmid pBR322. Proc. Natl. Acad. Sci. USA. 75: 3737-3741.
- Tzouveleakis LS, Bonomo RA (1999). SHV-types  $\beta$ -lactamases. Curr. Pharm. Des. 5: 847-864.
- Zeba B, Simporé J, Nacoulma O G (2003). Profils de substrat des  $\beta$ -lactamases extraites d'isolats cliniques au centre hospitalier Saint Camille de Ouagadougou / Burkina Faso. West Afr. J. Pharmacol. Drug Res. 19: 28-32.