

Tropical Journal of Pharmaceutical Research April 2011; 10 (2): 177-185

© Pharmacotherapy Group,
Faculty of Pharmacy, University of Benin,
Benin City, 300001 Nigeria.

All rights reserved.

Available online at <http://www.tjpr.org>

Research Article

Improved Antitumoral Activity of Extracts Derived from Cultured *Penicillus dumetosus*

Rosa Moo-Puc^{1,2}, Daniel Robledo¹ and Yolanda Freile-Pelegrin^{1*}

¹Department of Marine Resources; Cinvestav, Km 6 Carretera Antigua a Progreso, Cordemex, 97310, A.P. 73, Mérida, Yuc., ²Unidad de Investigación Médica Yucatán, Unidad Médica de Alta Especialidad, Centro Médico Ignacio García Téllez, Instituto Mexicano del Seguro Social; 41 No 439 x 32 y 34, Col. Industrial CP 97150, Mérida, Yuc., México

Abstract

Purpose: Extracts of the green alga, *Penicillus dumetosus*, have shown antiproliferative activity against several cancer cell lines. The aim of this study was to evaluate if this activity is modified after cultivation.

Methods: *P. dumetosus* was cultured under different light treatments. After 10, 20 and 30 days, alga samples were collected and their organic extracts prepared. Lipid and phenol contents were evaluated by standardized methods. Antiproliferative activity was assayed in four cancer cell lines (Hep-2, HeLa, SiHa, and KB) while cytotoxic activity was evaluated on a normal cell line (MDCK).

Results: The 10-day cultivation organic extract exhibited increased antiproliferative activity compared with the control on human carcinoma nasopharynx (KB) and laryngeal (Hep-2) cell lines. The inhibition of cell growth (IC₅₀) of 20- and 30-day extracts decreased compared with the control, except for KB. This activity was related to induction of apoptosis as evidenced by DNA fragmentation. All the extracts showed low cytotoxicity. Total phenol content in the organic extracts did not change during cultivation; however, polyunsaturated fatty acid content was modified under different light treatments.

Conclusion: The 10-day cultivation extract from *P. dumetosus* culture under conditions described in this study showed increased antiproliferative activity compared with the control and induced apoptosis on SiHa, HeLa, Hep-2 and KB cells.

Keywords: Antiproliferative, Cancer cell lines, Bioactivity, Cytotoxicity, Green alga, *Penicillus dumetosus*

Received: 7 October 2010

Revised accepted: 31 January 2011

*Corresponding author: E-mail freile@mda.cinvestav.mx; Tel: +52999 9429459; Fax: +52999 9812917

Trop J Pharm Res, April 2011;10 (2):177

INTRODUCTION

Recent trends in drug research on natural sources suggest that algae are a promising source of novel biochemical active substances [1]. To survive in a competitive environment, marine algae have developed defense strategies that result in a significant level of structural chemical diversity that derive from different metabolic pathways [2]. The feasibility of algal cultivation can help to induce adaptations that can be measured through metabolite synthesis or biological activity. Fully controlled greenhouse-based cultivation systems have been developed for high quality year-round vegetable production for the botanical drug market [3]. Therefore, a better understanding of the potential manipulation of algal culture conditions to modify metabolite synthesis and activity is required.

Tropical green alga in the order Bryopsidales, including those of the genera *Avranvillaea*, *Caulerpa*, *Halimeda*, *Penicillus* and *Udotea*, are noted for the production of sesqui and diterpenoids, compounds that have also shown antifungal and antiproliferative activity [2,4]. Recent studies have shown that both aqueous and organic extracts of *Penicillus dumetosus* exhibit *in vitro* antiprotozoal [5,6], as well as cytotoxic and antiproliferative activities on cancer cell lines [7]. In some cases, the antiproliferative activity of marine alga extracts has been positively correlated with the total polyphenol content suggesting a causal link related to extract content of polyphenols and phenolic acids [8], while other authors have reported a variety of fatty acids and derivatives with antiproliferative effects in different cancer cell models [9].

The high diversity of algae species coexisting in tropical habitats makes them highly competitive and complex. As a result of this intense competition, a high percentage of species have evolved chemical means of defense against predation or overgrowth by competing species [10]. Nutrient, light, water current, and temperature represent additional

growth limiting components, further fueling competition. Despite the observations of antiproliferative activities in marine algae, there is limited information on how this activity may change under contrasting environmental conditions. Therefore, the objective of this study was to investigate the antiproliferative activity of crude organic extracts of cultured *P. dumetosus* on four human malignant cell lines (Hela, Hep-2, SiHa and KB). Furthermore, the study evaluated whether phenol content and lipid composition were related to its antiproliferative activity and to the cells' apoptosis inducement.

EXPERIMENTAL

Culture conditions

Penicillus dumetosus (J.V. Lamouroux) Blainville were collected in the Yucatan Peninsula coast, Yucatan, Mexico, stored in plastic bags and chilled in ice during transport to the Cinvestav Marine Station at Telchac, Yucatan, Mexico. Algae cultivation was performed under four light treatments: full (100 %) sunlight, 75 % sunlight, 50 % sunlight, and 0 % sunlight, designated A, B, C and D sections, respectively. Agricultural greenhouse shade net was used in order to obtain variable light intensities in the culture system. Light intensity varied over cultivation time: During the first 10 days, the photon flux density (PFD) in full sunlight and 75 % sunlight sections were not significantly different (one-way ANOVA, $F_{[3,36]} = 68.21$, $P < 0.0001$; post hoc Tukey's test $P < 0.0001$) at 55 ± 12.9 and $65 \pm 12.5 \mu\text{mol photon m}^{-2}\text{s}^{-1}$, respectively, while 50 and 0 % sunlight sections received 60 and 3 % of incident PFD, respectively, i.e., 42 ± 12.0 and $2 \pm 0.7 \mu\text{mol photon m}^{-2}\text{s}^{-1}$, respectively. At 20- and 30- day cultivation, a similar trend was registered with 75 % sunlight section receiving 75 – 100 % and 50 % sunlight section 42 – 52 % of incident PFD; 0 % sunlight section only received 2 % of incident PFD.

Preparation of extracts

Freshly collected samples of the wild material were lyophilized and milled into powder to perform plant extraction protocols and analytical methods; this material was considered as control before cultivation (time 0). Entire plants of *P. dumetosus* (n = 10 - 15) were taken from each culture treatment - A, B, C and D - at 10, 20 and 30 days of the experimental period to perform organic extraction and analysis. Lyophilized samples (10 g) were exhaustively extracted with 200 mL of dichloromethane: methanol (7:3) by maceration for 24 h at room temperature. The extracts were filtered and concentrated to dryness under vacuum at 40 °C and stored at -20 °C until evaluated. The extracts were labeled according to culture conditions: light intensity (A, B, C or D) and time (10, 20 and 30 days).

Cell line cultivation

The following cell lines were used for the cytotoxicity and antiproliferative assays: normal Mardin-Darbin cell kidney (MDCK), and four human carcinoma cells, namely, laryngeal (Hep-2), cervix (HeLa), cervix squamous (SiHa) and nasopharynx (KB). The cells were grown in DMEM (Gibco) media supplemented with 10 %v/v fetal bovine serum (FBS, Gibco) with 100 U mL⁻¹ penicillin and 100 mg/mL streptomycin. Cell lines were maintained at 37 °C in a 5 % CO₂ atmosphere with 95 % humidity, and culture medium was changed once every 5 days.

Cytotoxicity assays

The cytotoxicity assay was performed according to the method of Rahman et al [11]. In this procedure, 1.5 x 10⁴ viable cells from each cell line were seeded in a 96-well plate (Costar) and incubated for 24 to 48 h. When cells reached > 80 % confluence, the medium was replaced and the cells were treated with the organic extracts dissolved in dimethyl sulfoxide (DMSO at a maximum concentration of 0.05 %) at concentrations of

6.25, 12.5, 25 and 50 µg mL⁻¹. After 72 h of incubation, 10 µL of a 0.005 % 3-(4,5-dimethylthiazol-2-yl)-2,5-diphenyl tetrazolium bromide (MTT, Sigma) solution (5 mg mL⁻¹) was added to each well and incubated at 37 °C for 4 h. The medium was removed and formazan, generated by the activity of dehydrogenases, was dissolved in acidified isopropanol (0.4M HCl). The amount of MTT-formazan is directly proportional to the number of living cells and was determined by measuring the optical density (OD) at 540 nm using a Bio-assay reader (BioRad, USA). Untreated cells were used as negative control. The concentration of the organic extract that killed 50 % of the cells (CC₅₀) was calculated with GraphPad-PRISM 4.00 software. All determinations were performed in triplicate.

Antiproliferative assays

For the antiproliferative assay, we used sulforhodamine B (SRB), a colorimetric assay which estimates cell number by staining total cellular protein with the SRB dye, in order to assess cell growth inhibition [11]. The method used the same conditions as the cytotoxic assay except that medium was replaced with DMEM 10 % SFB to induce cellular proliferation during extract treatments. After 48 h incubation, the medium was discarded and cells were fixed with 100 µl ice-cold 40 % trichloroacetic acid (TCA, Aldrich Chemical). Thereafter, the cells were incubated at 4 °C for 1 h and plates were washed five times with cold water. The excess water was drained off and the plates were left to dry, 50 µL of SRB stain (10 mg w/v in 1% acetic acid) were added to each well for 30 min. Finally, they were washed with 50 mL 1 % acetic acid, rinsed four times until dye adhering to the cells was observed. The OD was measured at 540 nm using an ELISA reader (model 450, BIO-RAD, USA). Untreated cells were used as negative control. The IC₅₀ value, i.e., the concentration of organic extract that produced a 50 % reduction of the surviving fraction, was calculated using GraphPad-PRISM 4.00 software. MDCK cell

line was used to evaluate the selectivity and cytotoxicity of the alga extracts. All determinations were performed in triplicate.

Agarose gel electrophoresis

Induction of apoptosis on cancer cells was assayed by DNA agarose gel electrophoresis. Cancer cells at exponential phase were exposed to 50 $\mu\text{g mL}^{-1}$ of organic extract for 48 h. The cells were harvested, washed twice with PBS, and DNA was extracted using the DNA Ladder Detection Kit (Biovision). Ifofamide (Sigma), an antitumoral drug, was used as a positive control while untreated SiHa cells were used as negative control. DNA was analyzed by electrophoresis at 75 mA on 8 g L⁻¹ agarose gel containing 0.5 mg L⁻¹ ethidium bromide. After 1.5 h, the gel was visualized and photographed under transmission UV light.

Total phenolic content

Total phenolic content of algal extracts was determined spectrophotometrically using Folin-Ciocalteu reagent [12]. First, 20 mg of the dry extract was diluted with methanol (3 mL). Aliquots of the diluted extracts (0.1 mL) were transferred into the test tubes; 2.9 mL of distilled water and 0.5 mL of Folin-Ciocalteu reagent were added. After 10 min, 1.5 mL of 20% sodium carbonate solution was added, mixed thoroughly and allowed to stand at room temperature in the dark for 1 h. Absorbance was measured at 725 nm, total phenolic content (expressed in % of dry weight) was calculated based on a standard curve of phloroglucinol.

Total lipid content

Total lipids were determined according to a previously reported method [13]. Alga extract (20 mg) was homogenized with a mixture of H₂O, methanol and chloroform (1:1:9 v/v). The chloroform layer containing dissolved lipids was collected, dried with nitrogen and saponified with 1.2M NaOH. Fatty acids were converted to methyl esters with 0.6 mL 10M

HCl and 1 mL of 12 % boron trichloride in methanol at 80 °C for 60 min. After methylation 1 mL of hexane: diethylether (1:1) and 3 mL of 0.3M NaOH were added, dried with nitrogen and recovered with hexane. The total content of fatty acid methyl esters was analyzed by gas chromatography (Hewlett Packard 6890 Plus with Supelco SP2560™ biscianopropyl polysiloxane capillary column 100 m x 0.25 mm x 0.25 μm internal diameter). The column temperature programming was set from 140 (5 min) to 240 °C (20 min) at a rate of 4 °C/min. Injector and detector temperature was 260 °C. Helium was used as the carrier gas at a flow rate of 1.1 mL min⁻¹. Fatty acid methyl esters were identified by comparing their retention times with those of standard samples. The lipid analyses were carried out in duplicate and the results expressed as percentage of alga extract dry weight (% dry wt).

Statistical analysis

Data were analyzed with a software (GraphPad Software Inc, San Diego, CA). The dose– response curves (variable slope) were fitted with the algorithm: $Y = E_{\text{min}} + \frac{(E_{\text{max}} - E_{\text{min}})}{1 + 10^{(\text{Log ED}_{50} - \text{Log D}) \cdot \text{Hill slope}}}$. Statistical analysis was performed with parametric tests, because variances were homogeneous between groups. Unpaired Student's *t*-test (two-tailed) was applied when only two groups were compared. One-way ANOVA followed by post hoc Tukey's test was used to assess the differences when three or more groups were simultaneously compared. Values in text and figures are expressed as mean \pm SD.

RESULTS

The antiproliferative activities of algal extracts increased when the wild alga was cultured under experimental conditions. The organic extract of *P. dumetosus* collected in the wild (time 0) showed antiproliferative activity on SiHa, HeLa, Hep-2 and KB cells with IC₅₀ of 360.1 \pm 1.3, 224.6 \pm 3.2, 76.0 \pm 2.2 and 44.8 \pm 1.6 $\mu\text{g mL}^{-1}$ respectively (Table 1). In

general, all *P. dumetosus* extracts obtained after cultivation treatments exhibited an increase in biological activity, as they showed increased inhibitory effects with a reduction in the initial IC₅₀, thus suggesting that culture conditions enhanced extract biological activity. This effect was most evident after 10 days of cultivation, particularly on SiHa, Hep-2 and KB cells. The antiproliferative activity of *P. dumetosus* extracts on SiHa cancerous cell line was significantly lower than the initial growth inhibition activity (IC₅₀ 360.10 µg mL⁻¹), with a reduction of 80 – 90 % of the initial IC₅₀. In Hep-2 cells, the inhibition of cell growth was in the IC₅₀ range of 11.7 - 17.4 µg mL⁻¹, representing a reduction of 77.0 - 84.5 % from the original extract activity (IC₅₀, 76 µg mL⁻¹). For KB cell line the inhibition of cell growth was in the IC₅₀ range of 19.3 - 29.9 µg

mL⁻¹, representing a reduction of 33.3 - 56.9 % from the control (IC₅₀ 44.8 µg mL⁻¹). Moreover, activities against KB cells declined at 20 and 30 days. HeLa cell line was more susceptible to extracts obtained from *P. dumetosus* after cultivation at day 10 and 20, compared to the original extract. The inhibition of cell growth was in the IC₅₀ range of 70.6 - 91.2 µg mL⁻¹ and 50.5 - 68.8 µg mL⁻¹ at 20 and 30 days, respectively. These values represent a reduction of 59.4 - 68.6 and 69.4-77.5 %, respectively, compared to the control (IC₅₀, 224.60 µg mL⁻¹).

Penicillus dumetosus extracts showed reduced cytotoxicity (CC₅₀, 300 ± 2.3 µg mL⁻¹) including the alga extract before cultivation (Table 2). The extracts obtained from *P. dumetosus* cultured under different

Table 1: Growth inhibition (IC₅₀, mean ± SD, n = 3) of *P. dumetosus* extracts on cancer cell lines (p ≤ 0.0001).

Cancer cells	IC ₅₀ ± SD (µg mL ⁻¹)			
	Time=0	Day 10	Day 20	Day 30
SiHa	360.1±1.3			
A		49.7±3.5	49.1±0.9	95.8±4.3
B		52.0±1.6	57.6±1.1	80.1±3.2
C		39.2±1.2	57.8±1.3	84.1±2.1
D		68.9±0.9	71.8±1.6	57.7±1.4
		F(4, 10)=15230	F(4, 10)=34270	F(4, 10)= 6500
HeLa	224.6±3.2			
A		70.6±2.8	50.5±0.7	117.8±1.20
B		83.0±1.9	42.5±2.1	137.0±1.10
C		90.6±2.1	64.6±0.7	108.8±1.25
D		91.2±1.2	68.8±1.6	129.3±2.10
		F(4, 10)=2195	F(4, 10)=4746	F(4, 10)=1727
Hep-2	76.01±2.2			
A		11.7±1.9	62.3±1.5	60.64±1.3
B		14.4±1.2	51.9±1.1	74.2±1.2
C		16.0±0.9	70.7±0.9	87.7±1.8
D		17.4±0.5	82.8±1.2	84.9±1.1
		F(4, 10)=1020	F(4, 10)=205	F(4, 10)=136.8
KB	44.87±1.6			
A		19.3±1.6	125.8±1.2	156.5±1.7
B		23.4±1.3	102.2±1.7	160.3±1.8
C		19.8±1.2	103.9±1.0	180.5±2.3
D		29.9±1.1	113.4±2.1	171.0±2.1
		F(4, 10)=177.9	F(4, 10)=1185	F(4, 10)=2634

Table 2: Cytotoxicity (mean \pm SD, n = 3) of *P. dumetosus* extracts on normal cell lines

Time (Irradiance group)	CC ₅₀ MDCK Cells	SI			
		SiHa	HeLa	Hep-2	KB
Time = 0	300 \pm 2.3	0.84	1.34	3.96	6.70
Day 10					
A	266 \pm 3.4	5.37	3.78	22.76	13.79
B	255 \pm 2.5	4.90	3.07	17.65	10.90
C	261 \pm 1.2	6.66	2.88	16.29	13.13
D	277 \pm 1.3	4.03	3.04	15.91	9.27
Day 20					
A	252 \pm 3.1	5.13	4.98	4.04	2.00
B	246 \pm 3.4	4.28	5.80	4.74	2.41
C	258 \pm 4.5	4.48	4.00	3.66	2.49
D	267 \pm 1.1	3.73	3.88	3.23	2.36
Day 30					
A	259 \pm 1.7	2.71	2.21	4.28	1.66
B	247 \pm 1.8	3.09	1.66	3.07	1.42
C	294 \pm 2.1	3.51	2.71	3.36	1.63
D	258 \pm 3.4	4.48	2.00	3.05	1.51

Note: CC₅₀ = mean concentration that killed 50% of cells of three assays; SI = selective index for each cancer cell line.

DNA ladder pattern of apoptosis induced by *Penicillium dumetosus* extract from treatment A after 10 days of culture (50 $\mu\text{g mL}^{-1}$) for each cell line is shown in Figure 1. This pattern was similar to the positive control. Formation of DNA fragments of oligonucleosomal size (180-200 bp) is characteristic of apoptosis in cells.

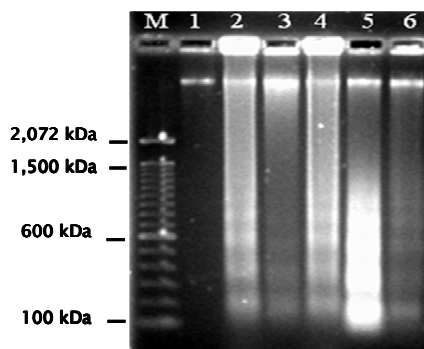


Figure 1: Analysis of DNA fragments of cancer cells. M: DNA marker, lane 1: normal control (cells + DMSO), lane 2: 100 $\mu\text{g mL}^{-1}$ ifosfamide, lane 3: SiHa cells, lane 4: HeLa cells, lane 5: Hep-2 cells, lane 6: Kb cells treated with 50 $\mu\text{g mL}^{-1}$ of *P. dumetosus* extract after 10 days of cultivation under A treatment.

The extract obtained from wild collected *P. dumetosus* before cultivation (time 0) showed a total phenol content of 2.9 ± 0.17 % dry wt. This value was considered as 100 % to provide a basis of comparison with the extracts from the light-treated algae. No significant differences in phenolic content were found for the different applied irradiances nor in relation to culture time, i.e., 10, 20, 30 days (one-way ANOVA, $F(11, 24) = 1.24$, $p = 0.08$, Figure 2a).

The extract obtained from freshly collected *P. dumetosus* before cultivation (time 0) showed a total lipid content of 57.7 ± 1.07 % This value was considered as 100 % in order to provide a basis of comparison with the extracts from the light-treated algae. Total lipid content of organic extracts varied in relation to time and light availability (Fig. 2b). Lipid content in *P. dumetosus* subjected to different levels of irradiance, after 10 days, decreased to approximately 66 – 72 % in relation to control.

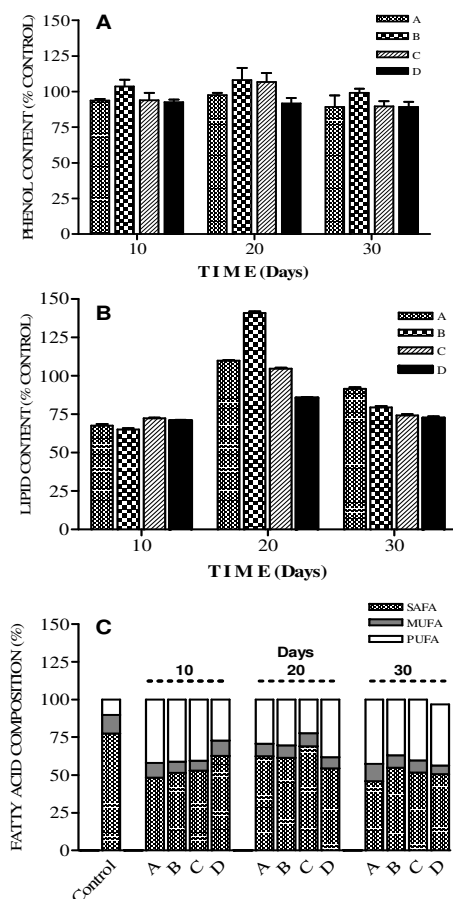


Figure 2: Organic extracts from cultured *P. dumetosus*. **Note:** A = total phenol content (% of control); B = lipid content (% of control); and C = fatty acid composition (% dry weight) over culture period of 10, 20 and 30 days.

After 20 days, *P. dumetosus* increased its lipid content, particularly under B treatment (140 %); however, after 30 days, lipid content decreased by 71 to 94 %. GC analysis revealed that saturated fatty acids (SAFA) were dominated (77.4 %) while monounsaturated fatty acid (MUFA) and polyunsaturated fatty acid (PUFA) constituted 12.3 and 10.3 %, respectively (Fig. 2c). In general, after cultivation, SAFA content decreased from 10 to 54 % in relation to control while MUFA content remained unchanged throughout the test period and cultivation treatment. On the other hand, PUFA content increased 2 - 4 times in plants

subjected to culture treatments, compared to the control

The fatty acid profile of the different extracts obtained in this study showed that the predominant SAFA was palmitic acid (16:0), while in the MUFA fraction, palmitoleic acid (PA; C16:1) and oleic acid (OA; C18:1) predominated. In general, *P. dumetosus* extracts had high levels of PUFA (omega-3 and omega-6) that increased after 10 days of cultivation, approximately four times in irradiance treatments A and B, and two times in irradiance treatments C and D.

DISCUSSION

Extracts obtained from *P. dumetosus* cultured at different light irradiances displayed varying antiproliferative activities against the cancer cell lines employed in this study. In other alga models, such as the cyanophyte *Scytonema*, increasing irradiance gradually increased antibiotic production [14]. Of all macroalgae, green alga are the least prolific producers of natural products, with less than 300 known compounds and only a handful of new secondary metabolites reported each year [1]. Tropical green alga in the order Bryopsidales, including the genus *Penicillus* are noted for the production of sesqui and diterpenoids that could be responsible of this antiproliferative activity [2]. Triterpene esters capisterones A and B derived from this green alga have also shown potent inhibition on marine fungi [4]. Recent studies have suggested that polyphenol content in alga extracts could be responsible for antiproliferative activity on cancer cell lines [8]. Moreover, phenolic compounds including phlorotannins can induce oxidative stress in cancer cells [15]. Previous studies have reported similar phenolic content of *P. dumetosus* and *Penicillus pyriformis* to be 2.20 ± 0.06 and 1.30 ± 0.16 % dry wt, respectively [16]. In this study the phenol content did not change over time or under the light treatment conditions tested and was not related to increased antiproliferative activity of the extracts.

Fatty acids have also been identified as bioactive compounds in marine algae. Eicosapentanoic acid (EPA) from the marine diatom *Phaeodactylum tricornutum* has been proven to have antibacterial activity against diverse pathogenic bacteria [17]. Moreover, a variety of fatty acids and their derivatives have antiproliferative effects in different cancer cell models. In particular, polyunsaturated fatty acids (PUFAs) have been demonstrated to reduce proliferation and induce cell death in studies with leukemia cell lines [9]. In this study, we observed an increase in the PUFA content of *P. dumetosus* extracts during cultivation. In particular, EPA content increased four-fold after 30 days cultivation under darkness, whereas, other fatty acids reported to have biological activity, such as PA, did not change significantly during the cultivation period or as a result of light treatment. In cultured *P. dumetosus*, a combination of high nitrogen and reduced temperature observed during the 10-day period probably had an effect on increased PUFA content.

According to the American National Cancer Institute, the IC₅₀ limit to consider a crude extract promising for further purification is < 30 µg mL⁻¹ [18]. Based on this criterion, after 10 days of cultivation, all *P. dumetosus* extracts increased their activity against Hep-2 and KB cells. Lower cytotoxicity in normal cells, compared to cancer cells, was also found in *P. dumetosus* extracts, a prerequisite for any potential extract for further isolation of bioactive compounds. On the other hand, apoptosis gives an idea about the effectiveness of anticancer therapy; some anticancer drugs show their anticancer activity by inducing apoptosis of cancer cells [19]. DNA fragments of oligonucleosomal size (180 - 200 bp) are a characteristic of apoptosis in cells. The results of the present study strongly suggest that the suppressive effect of *P. dumetosus* extracts on cancer cell proliferation is related to apoptotic body formation.

The exact underlying mechanisms of the antitumor activity of algae are as varied as the chemistry of the various secondary metabolites involved. In this regard, caulepenyne from *Caulerpa taxifolia* has been shown to inhibit proliferation of the fibroblastic cell line BHK21/C13 and SK-N-SH, and its cytotoxicity has also been demonstrated in various tumor cell lines [20]. Several sulphated algal polysaccharides may also reduce cell proliferation of cancerous colonic epithelial cells [21]. While the metabolites responsible for the antiproliferative activities in *P. dumetosus* have not been chemically characterized, the data indicate that multiple secondary compounds with biological activity may be produced at a given time. This has been proven in higher plants where the magnitude of pharmacological effects may vary depending on where the plant was grown, when it was harvested and how long it was stored [3].

CONCLUSION

The results of this study indicate that the metabolism of some active compounds of *P. dumetosus* are substantially influenced by changes in light treatments, and hence have an influence on the production of metabolites that render them biologically active. Extracts obtained from *P. dumetosus* after 10 days of culture under conditions described in this study exhibited increased antiproliferative activity and induced apoptosis on SiHa, HeLa, Hep-2 and KB cells. Although we observed culture conditions and time influenced lipid content and composition, the compound responsible for the antiproliferative activity of *P. dumetosus* extracts remains to be identified.

ACKNOWLEDGMENT

This work was supported by SEP-CONACYT 53687. Cinvestav financed a post-doctoral fellowship for R Moo-Puc. The authors thank C Chávez Quintal and ML Zaldivar Romero for technical assistance during analysis.

REFERENCES

- Blunt JW, Copp BR, Hu WP, Munro MH, Northcote PT, Prinsep MR. Marine natural products. *Nat Prod Rep* 2007; 24: 31-86.
- Puglisi MP, Tan LT, Jensen PR, Fenical W. Capisterones A and B from the tropical green alga *Penicillus capitatus*: unexpected anti-fungal defenses targeting the marine pathogen *Lindra thalassiae*. *Tetrahedron* 2004; 60: 7035-7039.
- Lee KH. Research and discovery trends of Chinese medicine in the new century. *J Chin Med* 2004; 15: 151-160.
- Li XC, Jacob MR, Ding Y, Agarwal AK, Smillie TJ, Khan SI, Nagle DG, Ferreira D, Clark AM. Capisterones A and B, which enhance fluconazole activity in *Saccharomyces cerevisiae*, from the marine green alga *Penicillus capitatus*. *J Nat Prod* 2006; 69: 542-546.
- Moo-Puc R, Robledo D, Freile-Peagrín Y. Evaluation of selected tropical seaweeds for *in vitro* antitrichomonal activity. *J Ethnopharmacol* 2008; 120: 92-97.
- Freile-Peagrín Y, Robledo D, Chan-Bacab MJ, Ortega-Morales BO. Antileishmanial properties of tropical marine alga extracts. *Fitoterapia* 2008; 79(5): 374-377.
- Moo-Puc R, Robledo D, Freile-Peagrín Y. *In vitro* cytotoxic and antiproliferative activities of marine macroalga from Yucatán, Mexico. *Cienc Mar* 2009; 35(4): 345-358.
- Yuan YV, Walsh N. Antioxidant and antiproliferative activities of extracts from a variety of edible seaweeds. *Food Chem Toxicol* 2006; 44: 1144-1150.
- Tronstad KJ, Bruserud Ø, Berge K, Berge RK. Antiproliferative effects of a non- β -oxidizable fatty acid, tetradecylthioacetic acid, in native human acute myelogenous leukemia blast cultures. *Leukemia* 2002; 16: 2292-2301.
- Freile-Peagrín Y, Morales JL. Antibacterial activity in marine alga from Yucatan coast, Mexico. *Bot Mar* 2004; 47: 140-146.
- Rahman, Atta-ur; Choudhary, M. Iqbal; Thomsen, William J. Bioassay techniques for drug Development. In: Thomsen, William J, Ed. *Manual of bioassay techniques for natural products research*. 1st edn. Netherlands: Harwood Academic Publishers; 2001; p 34-35.
- Lim SN, Cheung PCK, Ooi VEC, Ang PO. Evaluation of antioxidative activity of extracts from a brown seaweed, *Sargassum siliquastrum*. *J Agric Food Chem* 2002; 50: 3862-3866.
- Bligh EG, Dyer WJ. A rapid method of total lipid extraction and purification. *Can J Biochem Physiol* 1959; 37: 911-917.
- Chetsumon A, Umeda F, Maeda I, Yagui K, Mizoguchi T, Miura Y. Broad spectrum and mode of action of an antibiotic produced by *Scytonema sp.* TISTR 8208 in a seaweed-type bioreactor. *Appl Bioch Biotech* 1998; 249(70-72): 249-256.
- Reddy L, Odhav B, Bhoola KD. Natural products for cancer prevention: a global perspective. *Pharmacol Therapeut* 2003; 99: 1-13.
- Zubia M, Robledo D, Freile-Peagrín Y. Antioxidant activities in tropical marine macroalga from the Yucatan Peninsula, Mexico. *J Appl Phycol* 2007; 19(5): 449-458.
- Desbois AP, Mearns-Spragg A, Smith VJ. A fatty acid from the diatom *Phaeodactylum tricornutum* as antibacterial against diverse bacteria including multi-resistant *Staphylococcus aureus* (MRSA). *Mar Biotechnol* 2009; 11: 45-52.
- Suffness, M.; Pezzuto, John M. Assays related to cancer drug discovery. In: Hostettmann, Kurt, Ed. *Methods in Plant Biochemistry: Assays for Bioactivity*, vol 6. London: Academic Press; 1990. p 71-133.
- Kim R. Recent advances in understanding the cell death pathways activated by anticancer therapy. *Cancer* 2005; 103: 1551-1560.
- Commeiras L, Thibonnet J, Parrain JL. Studies towards the total synthesis of (-)-Caulerpenynol, a toxic sesquiterpenoid of the green seaweed *Caulerpa taxifolia*. *Eur J Org Chem* 2009; 18: 2987-2997.
- Kaeffer B, Bénard C, Lahaye M, Blottière HM, Cherbut C. Biological properties of ulvan, a new source of green seaweed sulfated polysaccharides, on cultured normal and cancerous colonic epithelial cells. *Planta Med* 1999; 65: 527-531.