



THE AGA KHAN UNIVERSITY

eCommons@AKU

Community Health Sciences

Department of Community Health Sciences

4-14-2020

Evaluation of computer aided detection of tuberculosis on chest radiography among people with diabetes in Karachi Pakistan

Shifa Salman Habib

Sana Rafiq

Syed Mohammad Asad Zaidi

Rashida Abbas Ferrand

Jacob Creswell

See next page for additional authors

Follow this and additional works at: https://ecommons.aku.edu/pakistan_fhs_mc_chs_chs



Part of the [Bacterial Infections and Mycoses Commons](#), [Pulmonology Commons](#), and the [Radiology Commons](#)

Authors

Shifa Salman Habib, Sana Rafiq, Syed Mohammad Asad Zaidi, Rashida Abbas Ferrand, Jacob Creswell, Bram Van Ginneken, Wafa Zehra Jamal, Kiran Sohail Azeemi, Saira Khowaja, and Aamir Khan

OPEN

Evaluation of computer aided detection of tuberculosis on chest radiography among people with diabetes in Karachi Pakistan

Shifa Salman Habib¹, Sana Rafiq¹, Syed Mohammad Asad Zaidi¹, Rashida Abbas Ferrand², Jacob Creswell³, Bram Van Ginneken⁴, Wafa Zehra Jamal^{1*}, Kiran Sohail Azeemi¹, Saira Khowaja⁵ & Aamir Khan⁵

Pakistan ranks fifth among high tuberculosis (TB) burden countries and also has seventh highest burden for diabetes mellitus (DM). DM increases the risk of developing TB and contributes to adverse TB treatment outcomes hence screening and integrated management for both diseases in high burden countries is suggested. Computer-Aided Detection for TB (CAD4TB) can potentially be used as triage tool in low resource settings to pre-screen individuals for Xpert MTB/RIF testing. The aim of this study was to evaluate the diagnostic accuracy and performance of CAD4TB software in people with diabetes (PWD) enrolled in a TB screening program in Karachi, Pakistan. A total of 694 individuals with a diagnosis of DM (of whom 31.1% were newly diagnosed) were screened with CAD4TB and simultaneously provided sputum for Xpert MTB/RIF testing. Of the 74 (10.7%) participants who had bacteriologically positive (MTB+) results on Xpert testing, 54 (73%) had a CAD4TB score >70; and 155 (25%) participants who tested MTB-negative had scores >70. The area under the receiver operator curve was 0.78 (95% CI: 0.77–0.80). Our study findings indicate that CAD4TB offers good diagnostic accuracy as a triage test for TB screening among PWD using Xpert MTB/RIF as the reference standard.

Diabetes mellitus (DM) increases the risk of developing tuberculosis (TB) up to three fold and may contribute to adverse TB treatment outcomes such as delayed sputum conversion, treatment failure, relapse and death¹. Given the high proportion of undiagnosed DM in many low and middle-income countries, screening for DM among individuals diagnosed with TB has been recommended^{2,3}. Despite World Health Organization (WHO) and the International Union against Tuberculosis and Lung Disease (IUATLD) recommendations for screening followed by integrated management of both diseases, the uptake of screening for TB among people with diabetes (PWD) has remained low⁴.

Recently, there has been renewed interest in the use of chest X-rays (CXR) as a screening tool for TB, particularly in active case finding programs. Computer-Aided Detection for TB (CAD4TB) software provides automatic readings of CXR with a higher score suggestive of TB and has the potential of being used as a triage tool in low-resource settings to pre-screen individuals for Xpert MTB/RIF testing⁵. Pragmatic use of screening through CAD4TB can result in significant savings through reduced Xpert testing specially in lower middle-income countries where high costs of Xpert testing has limited its use. It also reduces the need for an onsite radiologist for immediate readings, which is difficult in low resource settings. Evaluations of the software, using Xpert MTB/RIF as the reference standard have been conducted in Zambia, Bangladesh, Pakistan and most recently in Nepal and Cameroon, reporting a diagnostic accuracy in the range 0.71–0.92^{5–8}. Studies of radiographic manifestations of pulmonary TB in PWD report an increased frequency of lower lung field lesions, a higher frequency of cavitation, and more advanced disease^{9,10} yet there is almost no data on use of automated reading software for TB

¹Community Health Solutions, 9th Floor, Al-Tijarah Building, Main Shahrah-e-Faisal, Karachi, Pakistan. ²London School of Hygiene and Tropical Medicine, Keppel St, Bloomsbury, London, WC1E 7HT, UK. ³Stop TB Partnership, Global Health Campus, Chemin du Pommier 40, 1218, Geneva, Switzerland. ⁴Radboud University Medical Center, Radboud, Netherlands. ⁵Interactive Research & Development, 4th Floor, Woodcraft Building, Plot No. 3 & 3-A, Sector 47, Korangi Creek Road, Karachi, Pakistan. *email: wafa.jamal@chshealthcare.org

CAD4TB Score	All N (%)	<50 N (%)	50–79 N (%)	>80 N (%)	p-Value
Gender					0.125
Male	374 (53.9%)	119 (51.7%)	153 (51.7%)	102 (60.7%)	
Female	320 (46.1%)	111 (48.3%)	143 (48.3%)	66 (39.3%)	
Age					<0.05
<20	8 (1.1%)	5 (2.2%)	1 (0.3%)	2 (1.2%)	
20–39	92 (13.3%)	47 (20.4%)	27 (9.1%)	18 (10.7%)	
40–59	262 (37.8%)	93 (40.4%)	111 (37.5%)	58 (34.5%)	
≥60	332 (47.8%)	85 (37%)	157 (53%)	90 (53.8%)	
Diabetes Status					<0.001
RBS > 200 mg/dl	216 (31.1%)	116 (50.4%)	54 (18.2%)	46 (27.4%)	
Known DM individuals	478 (68.9%)	114 (49.6%)	242 (81.8%)	122 (72.6%)	
Xpert MTB/ RIF Result					<0.001
MTB Not Detected	620 (89.34%)	223 (96.9%)	276 (93.2%)	121 (72%)	
MTB Detected	74 (10.66%)	7 (3.1%)	20 (6.7%)	47 (28%)	

Table 1. Baseline characteristics of individuals with diabetes, screened with CAD4TB at private TB diagnostic and treatment centers in Karachi, Pakistan from July 2016 till April 2017.

CAD Score	Sensitivity (%)	Specificity (%)	PPV (%)	NPV (%)	No of Xpert tests saved	No of Total Xpert tests	No of TB Cases Missed	MTB+
No triage test	—	—	—	—	—	694		74
Cut-off 50	90.5%	42.4%	15.8%	97.4%	270	424	7	67
Cut-off 60	83.7%	58.6%	19.4%	96.8%	375	319	12	62
Cut-off 70	73.0%	69.5%	22.2%	95.6%	451	243	20	54
Cut-off 80	63.5%	78.7%	26.3%	94.8%	515	179	27	47
Cut-off 90	48.7%	85.8%	29.0%	93.3%	570	124	38	36

Table 2. Sensitivity, Specificity, Positive predictive Value, Negative Predictive Value at different CAD4TB score thresholds among PWD, tested using Xpert MTB/RIF, visiting TB diagnostic and treatment centers in Karachi, Pakistan (Q3 2016–Q2 2017).

among PWD. Glycemic control also influences radiographic manifestations of pulmonary TB in patients with DM. Therefore, CAD4TB may have variable diagnostic accuracy and lower sensitivity among PWD.

The objective of this study was to evaluate the performance of CAD4TB software in PWD enrolled in a TB screening program in Karachi, Pakistan.

Results

A total of 694 individuals with a diagnosis of DM [of whom 478 (68.9%) were previously known individuals with DM and 216 (31.1%) were newly diagnosed [based on glucometer random blood sugar (RBS) testing] were screened with CAD4TB and concurrently provided sputum for Xpert MTB/RIF testing. The median age of participants was 54 (IQR 17) years and 374 (53.9%) were male. Of the 74 (10.7%) participants who had bacteriologically positive (MTB+) results on Xpert testing, 47 (63.5%) had a CAD4TB score >80; and 121 (19.5%) participants who tested MTB-negative had scores >80 (Table 1).

Table 2 shows the sensitivity, specificity, positive predictive value and negative predictive value of CAD4TB score thresholds between 50 and 90, in PWD against the reference standard of Xpert MTB/RIF. Increasing CAD4TB score thresholds improved yield of TB case detection, with a corresponding increase in specificity and decrease in sensitivity. CAD4TB cut-offs of 50 and 90 yielded sensitivities of 90.5% and 48.7% respectively. The potential TB cases missed and Xpert testing yield were the lowest at the cut-off of 50 and highest at 90. Figure 1 shows the receiver operating characteristic curve for CADTB for the study participants using different CAD4TB thresholds. The AUC was 0.78 (95% CI: 0.77–0.80). Among those who were known individuals with DM, 76% individuals had CAD4TB score >50 relative to 46% of those with newly diagnosed DM (Fig. 2). The yield of MTB+ among newly diagnosed DM individuals was 4.2%. The overall yield of TB among DM individuals was 10.6% (Fig. 2).

Figure 3 shows a comparison of the performance of Xpert at CAD4TB score of 70 and 50 for a hypothetical population of 100,000 individuals with DM diagnosis. It indicates that 27% MTB positive cases will be missed when CAD4TB cut off score is ≥70 in comparison to 9.5% at CAD4TB cut off score >50. The Xpert testing yield at CAD4TB score ≥70 is higher (22.2%) as compared to CAD4TB cut off score >50 which was 15.8%.

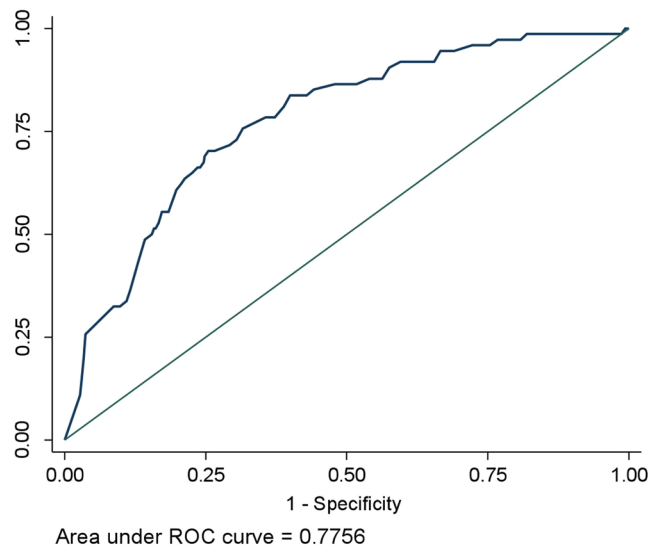


Figure 1. Area under the ROC curve using CAD4TB scores as predictor for MTB detection on Xpert MTB/RIF.

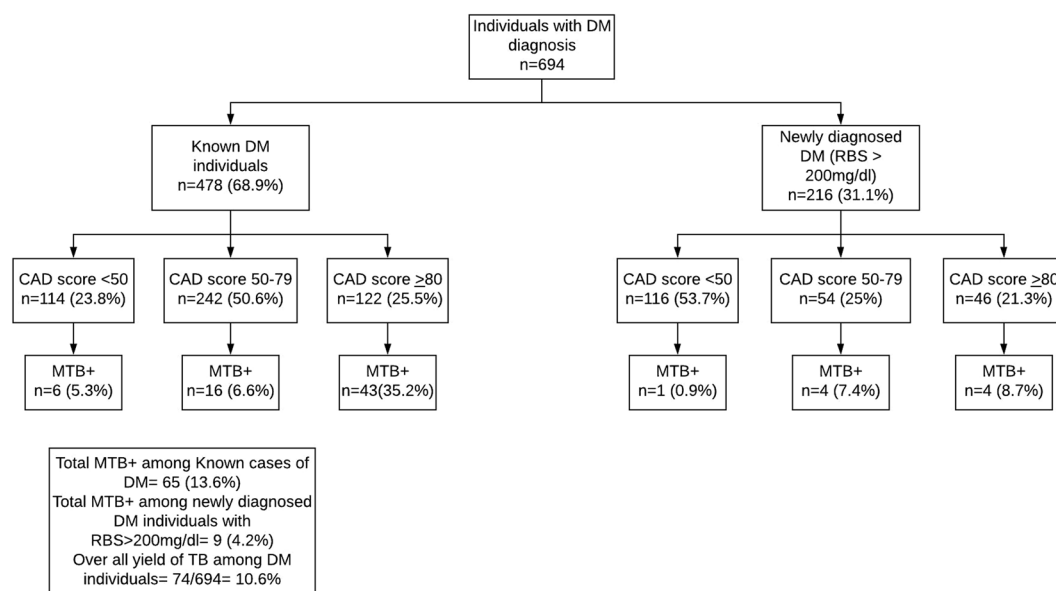


Figure 2. TB testing algorithm among DM diagnosed individuals visiting private TB diagnostic and treatment centers in Karachi, Pakistan (Q3 2016-Q2 2017).

Discussion

To our knowledge, this is the largest study to date evaluating CAD4TB among PWD and the first study using Xpert MTB/RIF as the reference standard in a programmatic setting. In this screening program, 74 (10.7%) of the 694 PWD undergoing TB testing were diagnosed with bacteriologically confirmed TB. A previous meta-analysis reported a TB prevalence of 0.38–14% among PWD¹¹. Our study findings indicate that CAD4TB offers good diagnostic accuracy as a triage test for TB screening among PWD using Xpert MTB/RIF as the reference standard. However, in comparison with the CAD4TB evaluation conducted in Pakistan among individuals with an unknown diabetes status that reported sensitivities in the range 91.0–97.3%, our current study shows lower sensitivities (range 48.6–90.5%) for the corresponding CAD4TB cut-offs on the same version of CAD4TB software⁵. A recent study from Indonesia evaluating CAD4TB among PWD reported an AUC of 0.89 using against the reference standard of bacteriologically and clinically confirmed TB (7 bacteriologically confirmed TB cases and 2 clinically diagnosed)¹².

With an estimated 19.4 million adults with DM in Pakistan, there is an important opportunity for finding missing cases of TB by integrating TB screening algorithm within routine management of DM patients¹³. This approach, after continuous advocacy by our group is now being included as part of the National Strategic Plan for TB control in Pakistan for implementation at the district-level.

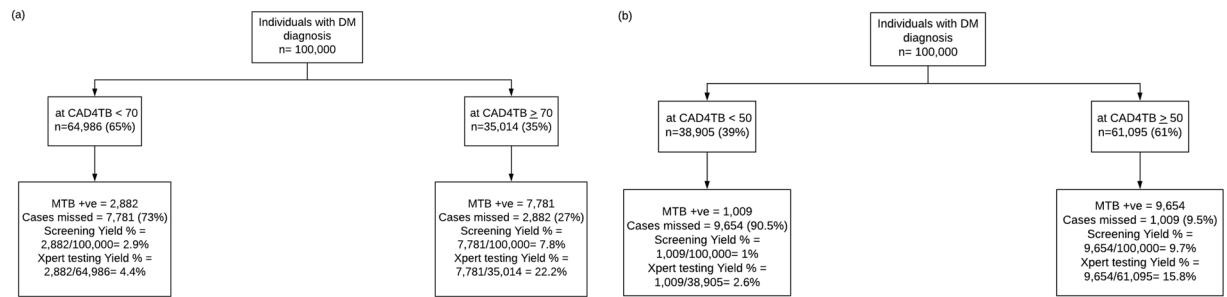


Figure 3. : Comparison of performance of Xpert using a CAD4TB cut off 70 (a) and 50 (b) for a hypothetical population of 100,000 DM diagnosed individuals visiting private TB diagnostic and treatment centers in Karachi, Pakistan.

A limitation of the current study was the utilization of patient history and random blood sugar (RBS) to identify PWD instead of more definitive diagnostic tool such as HbA1c which is comparatively more expensive hence unaffordable for most of the visitors in our setting. In addition, the association of glycemic control with CAD4TB scores and MTB positivity was not evaluated in this study. Another limitation of this study is that the symptoms data was not recorded which can be an important factor in risk assessment for CAD scores and enhance the performance of the software⁵.

The utilization of CAD4TB as a triage tool to pre-screen PWD for Xpert MTB/RIF testing can improve case-detection in screening programs and also potentially reduce program costs by promoting more rational use of expensive molecular tests like Xpert MTB/RIF. CAD4TB also enables the use of CXR without the need for expert radiology review with the added benefit of a short turnaround time making it particularly useful in resource-limited settings. Diagnostic algorithms and CAD4TB score cut-offs to be used in PWD need to be carefully appraised along with the cost implications against the number of cases missed in a low resource, high burden population. In addition, the effect of glycemic control on performance of CAD4TB software needs further study.

In conclusion, this study gives a broad overview of the use of CAD4TB tool in settings where universal Xpert MTB/RIF is not feasible to identify patients with DM who are more likely to have a concomitant diagnosis of TB.

Methods

The study was conducted between July 2016 to April 2017 in 30 private TB treatment and diagnostic centers called “Sehatmand Zindagi” (*Healthy Life*) Centers and in community, mobile X-ray based TB screening camps, located in low middle-income neighborhoods. The static centers and mobile X-ray units are equipped with CAD4TB supported digital CXR and serve as sputum collection points for Xpert MTB/RIF testing. Study participants were part of a broad bi-directional screening program for TB and Diabetes. Individuals reporting to be known cases of DM, currently on DM medication and those who were newly diagnosed with DM, with an RBS > 200 mg/dl on glucometer-based testing were referred for CXR and Xpert MTB/RIF testing.

The CXRs were scored for abnormalities suggestive of pulmonary TB by CAD4TB (version 3.07, Diagnostic Image Analysis Group, The Netherlands). Data analysis was conducted using Stata version 13. Sensitivity and specificity were computed for different CAD4TB score cut-offs using Xpert MTB/RIF as the reference standard and the receptor operator characteristic curves were constructed for CAD4TB.

Ethics approval and consent to participate. Ethical approval for the study was obtained from the Institutional Review Board of Interactive Research & Development that is registered with the Department of Health and Human Services, USA. Informed consent was taken from the all those undergoing testing under this program and de-identified data was utilized was analysis.

Data availability

The datasets used and analyzed during the current study are available from the corresponding author on reasonable request.

Received: 12 August 2019; Accepted: 25 March 2020;

Published online: 14 April 2020

References

- Jeon, C. Y. & Murray, M. B. Diabetes Mellitus Increases the Risk of Active Tuberculosis: A Systematic Review of 13 Observational Studies. *PLoS Medicine* **5** (2008).
- Workneh, M. H., Bjune, G. A. & Yimer, S. A. Prevalence and associated factors of tuberculosis and diabetes mellitus comorbidity: A systematic review. *Plos One* **12** (2017).
- WHO. Global report on diabetes 2016. Geneva: World Health Organization; 2016.
- Basir, M. S. *et al.* Operationalization of bi-directional screening for tuberculosis and diabetes in private sector healthcare clinics in Karachi, Pakistan. *BMC Health Services Research* **19** (2019).
- Zaidi, S. M. A. *et al.* Evaluation of the diagnostic accuracy of Computer-Aided Detection of tuberculosis on Chest radiography among private sector patients in Pakistan. *Scientific Reports* **8** (2018).
- Muyoyeta, M. *et al.* The Sensitivity and Specificity of Using a Computer Aided Diagnosis Program for Automatically Scoring Chest X-Rays of Presumptive TB Patients Compared with Xpert MTB/RIF in Lusaka Zambia. *PLoS ONE* **9** (2014).

7. Rahman, M. T. *et al.* An evaluation of automated chest radiography reading software for tuberculosis screening among public- and private-sector patients. *European Respiratory Journal* **49**, 1602159 (2017).
8. Qin, Z. Z. *et al.* Using artificial intelligence to read chest radiographs for tuberculosis detection: A multi-site evaluation of the diagnostic accuracy of three deep learning systems. *Scientific Reports* **9** (2019).
9. Chiang, C.-Y. *et al.* Glycemic Control and Radiographic Manifestations of Tuberculosis in Diabetic Patients. *PLoS ONE* **9** (2014).
10. Mahishale, V., Patil, B., Avuthu, S. & Eti, A. Glycemic control and radiographic manifestations of pulmonary tuberculosis in patients with type 2 diabetes mellitus. *Sub-Saharan African Journal of Medicine* **2**, 5 (2015).
11. Wagnew, F. *et al.* Meta-analysis of the prevalence of tuberculosis in diabetic patients and its association with cigarette smoking in African and Asian countries. *BMC Research Notes* **11** (2018).
12. Koesoemadinata, R. C. *et al.* Computer-assisted chest radiography reading for tuberculosis screening in people living with diabetes mellitus. *The International Journal of Tuberculosis and Lung Disease* **22**, 1088–1094 (2018).
13. IDF DIABETES ATLAS. International Diabetes Federation (9th ed.) ISBN: 978-2-930229-87-4(2019).

Acknowledgements

STOP TB partnership's TB Reach Initiative and UNITAID funded Establishment of the TB testing and diagnostic centers. Global Fund for Aids, TB and Malaria funded the scale up. World Diabetes Foundation supported the project activities. No funding was available for data analysis & interpretation, manuscript write up and publication of this study.

Author contributions

S.M.A.Z., S.S.H., S.R. and B.V.G. were involved in conception of the study and finalizing the study design. S.M.S.A.Z., S.H., S.R., W.Z.J. and K.S.A. were involved in conducting data collection, the literature review, data analysis, data interpretation and drafting the manuscript. J.C., S.K., R.A.F. and A.K. reviewed the drafts critically and finalized the manuscript. All authors reviewed and approved the final version to be published.

Competing interests

The authors declare no competing interests.

Additional information

Correspondence and requests for materials should be addressed to W.Z.J.

Reprints and permissions information is available at www.nature.com/reprints.

Publisher's note Springer Nature remains neutral with regard to jurisdictional claims in published maps and institutional affiliations.



Open Access This article is licensed under a Creative Commons Attribution 4.0 International License, which permits use, sharing, adaptation, distribution and reproduction in any medium or format, as long as you give appropriate credit to the original author(s) and the source, provide a link to the Creative Commons license, and indicate if changes were made. The images or other third party material in this article are included in the article's Creative Commons license, unless indicated otherwise in a credit line to the material. If material is not included in the article's Creative Commons license and your intended use is not permitted by statutory regulation or exceeds the permitted use, you will need to obtain permission directly from the copyright holder. To view a copy of this license, visit <http://creativecommons.org/licenses/by/4.0/>.

© The Author(s) 2020