

# APPLICATION OF POCKET GARDENS & LANDSCAPE SPACES IN URBAN CONTEXT

Dr. Mazlina Mansor,  
Dept. of Landscape Architecture  
Kulliyyah of architecture & Environmental Design,  
International Islamic University Malaysia



الجامعة الإسلامية العالمية ماليزيا  
INTERNATIONAL ISLAMIC UNIVERSITY MALAYSIA  
يُونُسُ بَرَسِيْتِي الْمَلِكُ، اَبْنُ اَبِي بَحْسَاءِ مَلِكِيْسِيَا

Garden of Knowledge and Virtue

# CONTENTS

- Types of pocket garden & landscape space
- Use & activities of urban spaces
- Landscape spatial materials
- Form composition
- Some examples of project
- Attributes of successful landscape spaces

# TYPES OF URBAN LANDSCAPE SPACES

*Green amenity*

*Communal space*

*Public realms*

## MACRO SCALE

## CITY SCALE

## NEIGHBOURHOOD SCALE

National park

State park

City/Urban Park

District/Local Park

Neighborhood Park

Playfield/  
Playground

Playlot

Unlimited size  
& population

>250 acres  
Throughout a  
township

100–250 acres

50,000 

20–100 acres

12,000 

3 acres

3,000 

1.5 acres

1,000 

0.5 acres

300 

Source: Department of Town and Country Planning Peninsular Malaysia (2010)

## SMALL LANDSCAPE SPACES

### Pocket Gardens & Urban Landscape Spaces

Civic open space  
(padang; medan  
plaza; square); public &  
private buildings'  
compound

#### Pocket gardens:

pocket park; minipark; vest  
pocket garden; secluded  
flower garden; vacant lot

#### Linear spaces:

pedestrian mall; streetscape  
(tree-link streets); active frontage,  
five-foot walkway/corridor

Parklet; kerblet; small  
incidental space; loose-fit  
space

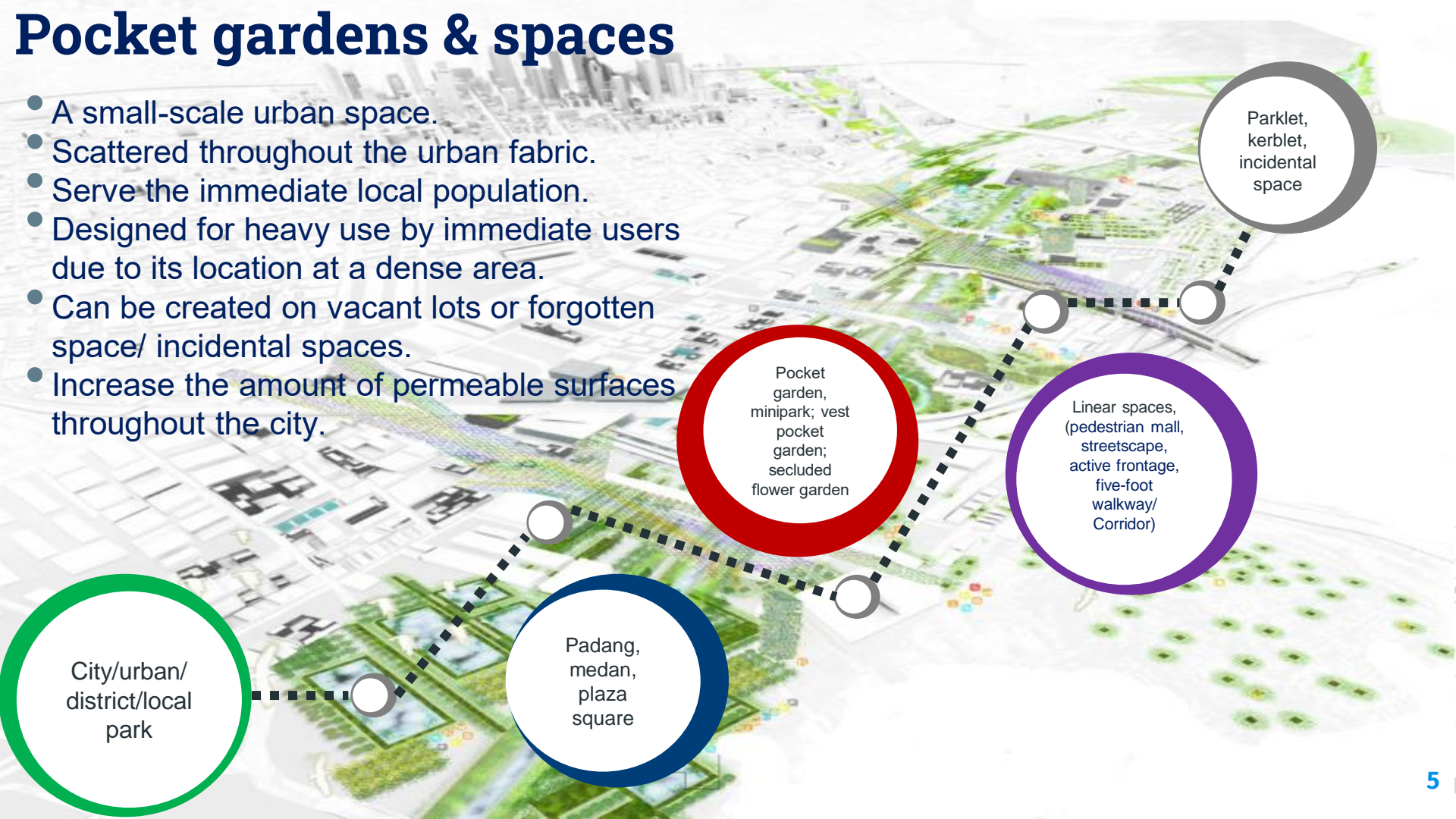






# Pocket gardens & spaces

- A small-scale urban space.
- Scattered throughout the urban fabric.
- Serve the immediate local population.
- Designed for heavy use by immediate users due to its location at a dense area.
- Can be created on vacant lots or forgotten space/ incidental spaces.
- Increase the amount of permeable surfaces throughout the city.



City/urban/  
district/local  
park

Padang,  
medan,  
plaza  
square

Pocket  
garden,  
minipark; vest  
pocket  
garden;  
secluded  
flower garden

Linear spaces,  
(pedestrian mall,  
streetscape,  
active frontage,  
five-foot  
walkway/  
Corridor)

Parklet,  
kerblet,  
incidental  
space

# 1) Civic open space - padang; plaza; square

- They serve as a stage for public lives - the settings where celebrations are held, social and economic exchanges take place, and where cultures mix.
- They are the "front porches" of public institutions - post offices, courthouses, federal office buildings - where we can interact with each other.

*(Project for Public Spaces)*



An event at Dataran Merdeka, Kuala Lumpur



Medan Pasar, Kuala Lumpur



## 2) Pocket gardens

- Pocket park; minipark; pocket space; vest pocket garden; secluded flower garden.
- Urban open spaces on a small-scale that provide a safe and inviting environment for surrounding community.
- They also meet a variety of needs and functions - small event space, play areas for children, spaces for relaxing or meeting friends, taking lunch breaks, etc.

Blake, A. (2013). Pocket parks. *Open Space Seattle, 2100*.



Pocket garden in front of the Lot 10, Kuala Lumpur



Pocket garden in front of shopping district, Kuala Lumpur

### 3) Linear landscape spaces

- Spaces that is substantially longer than it is wide. e.g. Pedestrian mall; streetscape (tree-link streets); active frontage, five-foot walkway/corridor





## 4) Parklet & kerblet; vacant lot; small incidental space/loose-fit space

- Small extension of spaces at a sidewalk that provides more space and amenities for people using the street.
- A public amenity including outdoor space for nearby cafés and restaurants, bike racks, planter boxes, benches, landscaping.



# Why do we need to design the small spaces in the city?

**Amenities; Community; Gathering; Recreation; History; Celebration; Art; Performance**



**Active frontage; social node**

**Parklet;kerblet**

**Streetscape; tree-link walkway**

Image from: <https://www.burnaby.ca/City-Services/>



# Why do we need to design the small spaces in the city?



**Good landscape spaces allow people a variety of necessary & voluntary activities**

Necessary: working; living; business; get to point A to point B

Voluntary: eat outdoors; leisure; walking; meet friends



# Provides conducive spaces for USE & ACTIVITIES

**NECESSARY ACTIVITIES**  
working; living; business



**Getting to point A to point B**

# VOLUNTARY ACTIVITIES

A refuge from the bustle of surrounding urban life; rest and relaxation; meet friends; gather; eat outdoor; small events; play space; people watching





# Why do we need them?

*Green amenity*

*Communal space*

*Public realm*

- The outdoor area that provides additional facilities for urban residents to enjoy, relax and socialize.
- Pocket gardens & small landscape spaces that have been designed well would have a strong aesthetic appeal to invite users to spend time in them.
- They will make the outdoor landscape of a building inviting and attractive to users.
- The resulting activity in these spaces would make buildings within them look livelier and enhance the overall appearance of the surroundings.
- Their enhancement will increase the functional value of the space and the surrounding areas.



Laman Tun Perak, KL

Source: Thinkcity



Pocket space, Tun Razak Exchange (TRX)



# How landscape achieves a great place through spatial qualities?

## SPATIAL MATERIALS



# SPATIAL MATERIALS

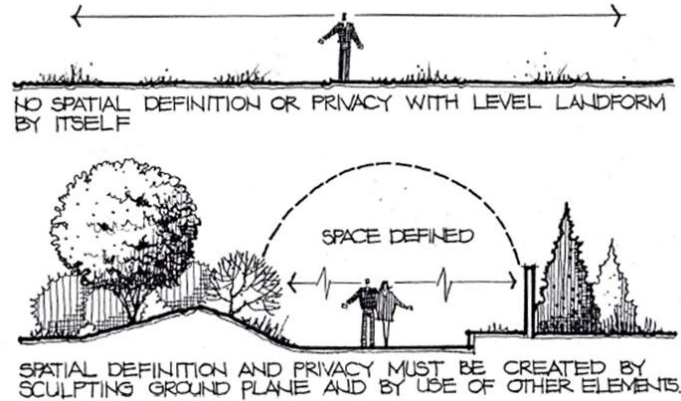
## 1. Landform



Sowwah Square, Abu Dhabi



Minneapolis Courthouse Plaza



Minneapolis Courthouse Plaza



## 2.Softscape

# SPATIAL MATERIALS

For small spaces, select medium to small size trees, easy maintenance & hardy plants.

TREE

PALM

BAMBOO

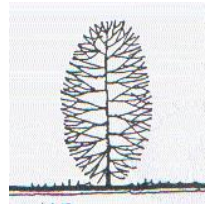
SHRUBS

GROUNDCOVER

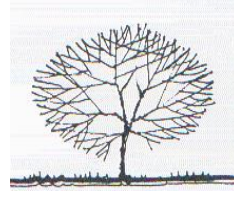
CLIMBER

AQUATIC PLANT

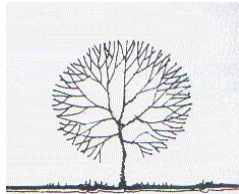
TURF/GRASS



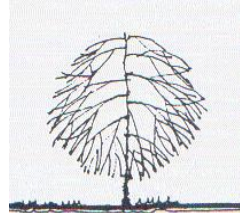
columnar



spreading



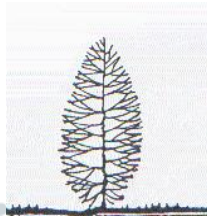
round



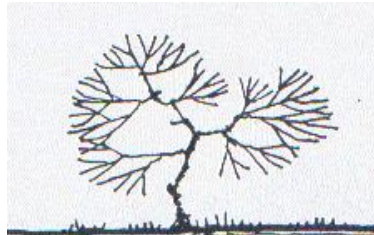
weeping



pyramidal



fastigiata



picturesque

Architectural & aesthetic functions  
form, colour, texture

Create theme

Focal point, welcoming, identity

Enhance building facade

Soften building outlines

Sense of direction

Shade & Thermal comfort

Unifying effect

Framing view

decorative

accent and contrast

silhouettes and reflection

smell



# SPATIAL MATERIALS

## 3.Hardscape

- **Surface materials** - pavement
- **Separating & enclosing elements** – wall, bollard, fence
- **Linkages** – bridge, gateway
- **Site furnishing** – seatings, lighting
- **Focal elements** – sculpture, gazebo, shelter



Fengming Mountain Park, China



Grand Canal Square, Dublin

## 4.Structure



Beiqijia Technology Business district

# SPATIAL MATERIALS

## 5. Water element

Flat, static water, flowing water & falling water elements

- Pool; pond; channel; cascade; waterfall; water jets



Fengming Mountain Park, China



Exchange Square, Manchester

Source: Martha Swartz Partners



# How landscape achieves great place through spatial qualities?

## FORM COMPOSITION OF DESIGN

A series of solutions with the same basic functional arrangement, but each with a different THEME, CHARACTER and FORM.

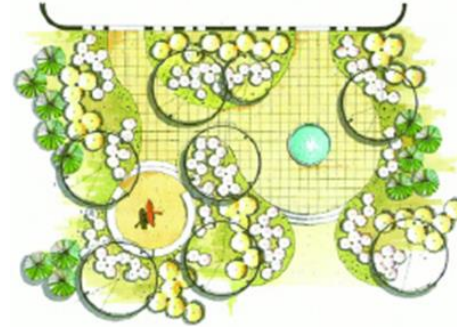


# FORM COMPOSITION OF DESIGN

For a small-scale site, the design form can be **simple form** & uses **geometric** design theme e.g. rectilinear, curvilinear, circular, angular, arc & tangent, or their combination.



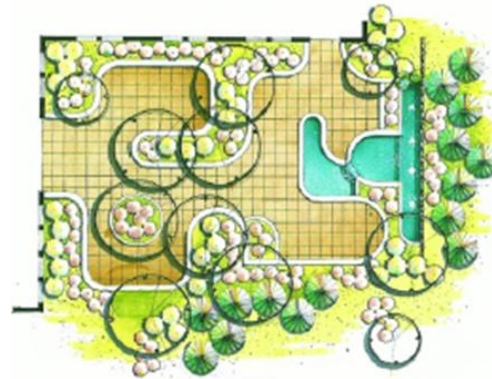
Rectilinear 90°



Curvilinear



Radial



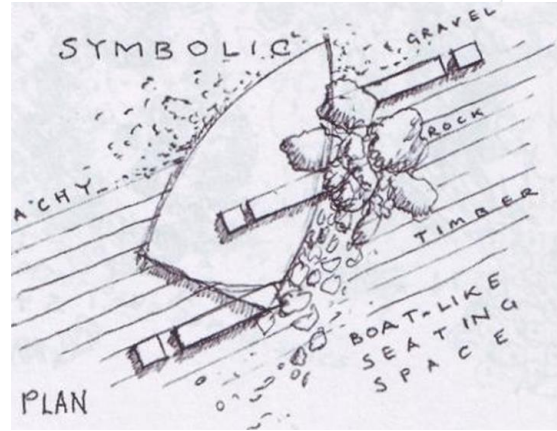
Arch-and-tangent



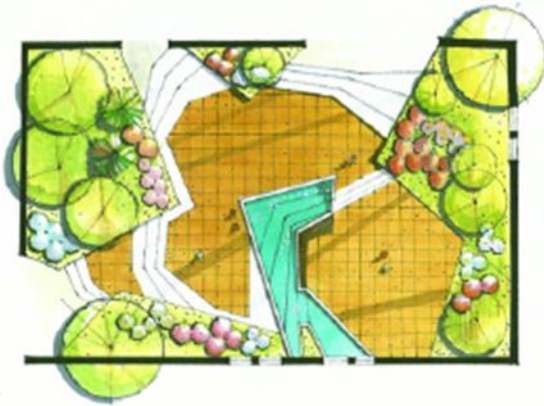
# FORM COMPOSITION OF DESIGN



Rectilinear 45° or 30°/60°



Symbolic



The irregular



Organic

And many more...

# EXAMPLES OF PROJECT

## Landscape spaces in KL City: Reclaiming the Streets, WUF9 2018 (by thinkcity)

2 PARKLETS

2 KERBLETS

MEDAN PASAR

### Locations:

Medan Pasar

Parklet 1 – Jalan Panggong (Tea shop)

Parklet 2 – Jalan Hang Kasturi (Pacific Express Hotel)

Kerblet 1 – Jalan Tun H.S. Lee (noodle shop)

Kerblet 2 – Jalan Tun H.S. Lee (junk bookstore)

1. Junk Book Store, Jalan Tun H S Lee\*

2. Beef Noodle Store, Jalan Tun H S Lee\*

3. Pacific Express Hotel/ Arch Gallery, Jalan Hang Kasturi

4. Purple Cane Tea Shop, Jalan Panggong

### IIUM Students' involvement:

2<sup>nd</sup> Year, Urban Design Studio,  
Bach. Of Landscape Architecture,  
KAED, IIUM

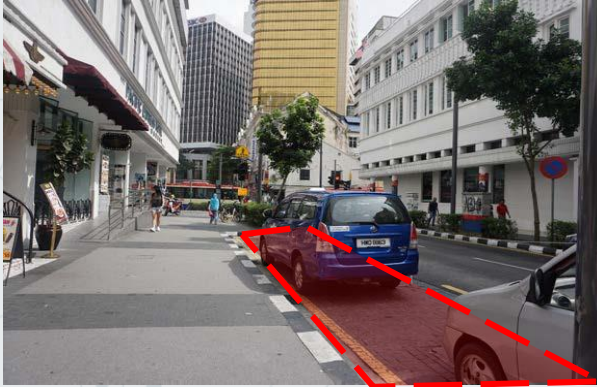
### Activities:

Survey enumerators  
Interviewers  
Site Care takers  
Public relations



# PARKLETS

## Parklet 1: Pacific Express Hotel, Jalan Hang Kasturi



## Parklet 2: Purple Cane Tea Shop, Jalan Panggong



# KERBLETS

## Kerblet 1: Junk Book Store, Jalan Tun H S Lee



## Kerblet 2: Beef Noodle Store, Jalan Tun H S Lee





# Activities:

## Survey using 'Tick And Stick' Interviews with the public/users

AGE:

WHY YOU ARE HERE TODAY:

LIVE IN KL? Yes No WORK IN KL? Yes No

1) Which ONE do you prefer?

Reason:

Parking  Parklet

2) What do you FEEL about this space? Do you like it?

3) What will make you COME here again?

- Recreation  Arts  Easy Access  
 Leisure  Comfort  Safe  
 Nearby my house/workplace

4) What do you love about KUALA LUMPUR city?

VENUE Medan Pasar Parklet 1 2 3 4

# Wishlist for the City

What do you wish to have in Kuala Lumpur city spaces?



# Activities:

Assisting the public in 'Feel free to sketch'

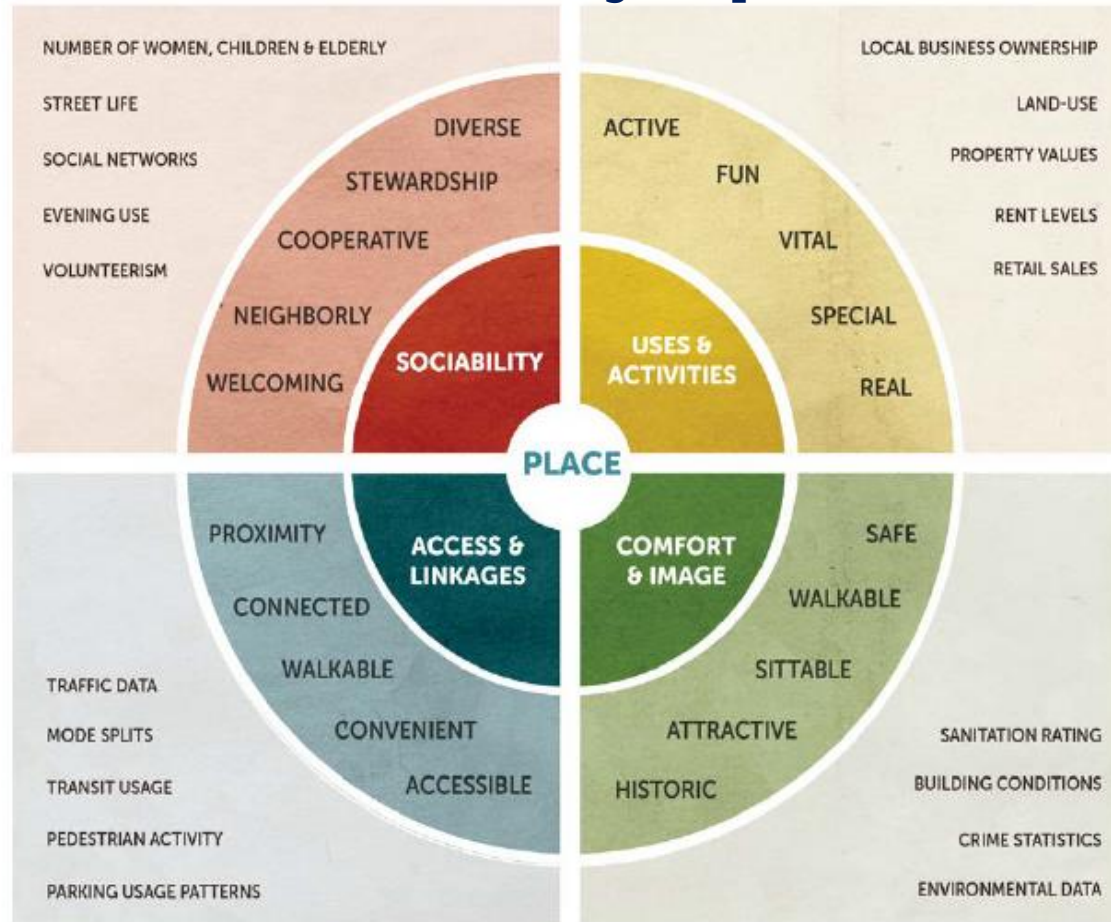




## Activities: Care for the landscape spaces



# What makes a great place?



MEASUREMENTS    ●    INTANGIBLES    ●    KEY ATTRIBUTES    ●



# Successful pocket gardens & landscape in urban spaces?

## BASIC RULES

### PLACEMAKING

SPACE + OCCASION + FUNCTION +  
SUPPORTED + MAINTAINED



Pocket garden & space must be **functional in design**;  
have **community support**; be **used** and **maintained**

**Wednesday**

March, 24<sup>th</sup> 2021

Time : 10.00 - 13.00 WIB

## International Lecture

| Applications of Pocket Gardens and Landscape Spaces in Urban Context

| Delivering Urban Ecosystem Services - Does Plant Choice Matter



Speaker

**Assoc. Prof. Dr. Mazlina Mansor**

Department of Landscape Architecture  
Kulliyah of Architecture and Environmental Design  
International Islamic University Malaysia (IIUM)

**Siti Nur Hannah Ismail, M.A., Ph.D**

Department of Landscape Architecture  
Universiti Teknologi Malaysia (UTM)


Moderator

**Septi Maulidyah, S.T., M.T**

Department of Landscape Architecture  
Insitut Teknologi Sumatera (ITERA)

# Thank You!

 [Arsitektur Lanskap ITERA](#)

 [arsitekturlanskap.itera](#)

Book Your Seat - [http://bit.ly/webinarILARL\\_series\\_2-1](http://bit.ly/webinarILARL_series_2-1)

Open for public with a maximum capacity of 300 people

Free e-certificate\* (\*terms and conditions apply)

Contact Person - Poppy | 0853 8357 0636