

Supplementary Material

Field observations on the behavioural ecology of the stout bobtail squid *Rossia macrosoma* (Cephalopoda: Sepiolidae) from Scottish waters

Christian Drerup^{1,2,*}, Andy Jackson², Chris Rickard², Mark Skea², Gavan M. Cooke^{2,*}

¹*Marine Behavioural Ecology Group, Department of Zoology, University of Cambridge, Downing St, Cambridge CB2 3EJ, United Kingdom*

²*The Cephalopod Citizen Science Project, 138 Alder Road, Poole BH12 4AB, United Kingdom*

Corresponding authors emails: cd731@cam.ac.uk (CD)

cephcitscience@gmail.com (GMC)

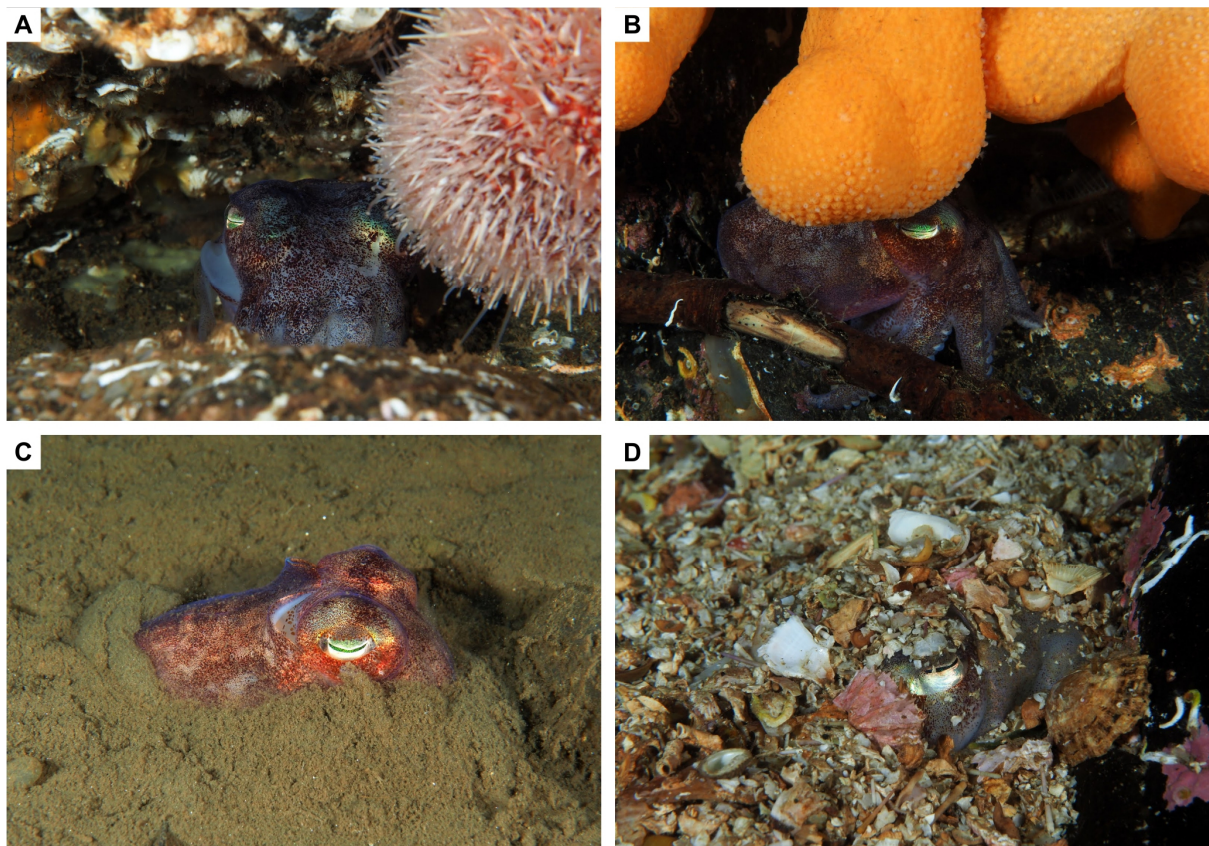


Figure S1. Sheltering and burying behaviour in *Rossia macrosoma*. **A-B)** Individuals sheltering **A)** in a rock crevice and **B)** under a coral arm. **C-D)** Burying behaviour in **C)** finer and **D)** coarser (shell and coral gravel) sediment. **A-D)** All photos taken by Mark Skea.