



# Genomic profiling using the UltraSEEK panel identifies discordancy between paired primary and breast cancer brain metastases and an association with brain metastasis-free survival

Athina Giannoudis<sup>1</sup> · Alexander Sartori<sup>2</sup> · Lee Eastoe<sup>2</sup> · Rasheed Zakaria<sup>1,3</sup> · Christopher Charlton<sup>4</sup> · Nicholas Hickson<sup>4</sup> · Angela Platt-Higgins<sup>1</sup> · Philip S. Rudland<sup>1</sup> · Darryl Irwin<sup>2</sup> · Michael D. Jenkinson<sup>3,5</sup> · Carlo Palmieri<sup>1,6</sup>

Received: 25 June 2021 / Accepted: 8 August 2021  
© The Author(s) 2021

## Abstract

**Purpose** Brain metastases (BM) are an increasing clinical problem. This study aimed to assess paired primary breast cancers (BC) and BM for aberrations within TP53, PIK3CA, ESR1, ERBB2 and AKT utilising the MassARRAY® UltraSEEK® technology (Agena Bioscience, San Diego, USA).

**Methods** DNA isolated from 32 paired primary BCs and BMs was screened using the custom UltraSEEK® Breast Cancer Panel. Data acquisition and analysis was performed by the Agena Bioscience Typer software v4.0.26.74.

**Results** Mutations were identified in 91% primary BCs and 88% BM cases. TP53, AKT1, ESR1, PIK3CA and ERBB2 genes were mutated in 68.8%, 37.5%, 31.3%, 28.1% and 3.1% respectively of primary BCs and in 59.4%, 37.5%, 28.1%, 28.1% and 3.1% respectively of BMs. Differences in the mutations within the 5 genes between BC and paired BM were identified in 62.5% of paired cases. In primary BCs, ER-positive/HER2-negative cases harboured the most mutations (70%), followed by ER-positive/HER2-positive (15%) and triple-negatives (13.4%), whereas in BMs, the highest number of mutations was observed in triple-negative (52.5%), followed by ER-positive/HER2-negative (35.6%) and ER-negative/HER2-positive (12%). There was a significant association between the number of mutations in the primary BC and breast-to-brain metastasis-free survival ( $p=0.0001$ ) but not with overall survival ( $p=0.056$ ).

**Conclusion** These data demonstrate the discordancy between primary BC and BM, as well as the presence of clinically important, actionable mutations in BCBM. The UltraSEEK® Breast Cancer Panel provides a tool for BCBM that can be utilised to direct more tailored treatment decisions and for clinical studies investigating targeted agents.

**Keywords** UltraSEEK® · Mutations · Breast cancer · Brain metastasis

✉ Carlo Palmieri  
c.palmieri@liverpool.ac.uk

<sup>1</sup> Institute of Systems, Molecular and Integrative Biology, Molecular and Clinical Cancer Medicine, University of Liverpool, Sherrington Building, Ashton Street, Liverpool L69 3GE, UK

<sup>2</sup> Agena Bioscience GmbH, Hamburg, Germany

<sup>3</sup> Department of Neurosurgery, The Walton Centre NHS Foundation Trust, Liverpool, UK

<sup>4</sup> Manchester University Hospital NHS Foundation Trust, Manchester, UK

<sup>5</sup> Institute of Systems, Molecular and Integrative Biology, Pharmacology and Therapeutics, University of Liverpool, Liverpool, UK

<sup>6</sup> The Clatterbridge Cancer Centre NHS Foundation Trust, Liverpool, UK

## Abbreviations

BC	Breast cancer
BCBM	Breast cancer brain metastasis
BM	Brain metastasis
BMFS	Breast–brain metastasis-free survival
CPM96	Chip prep module 96
ER	Oestrogen receptor
FFPE	Formalin-fixed, paraffin-embedded
HER2	Human epidermal growth factor receptor 2
IHC	Immunohistochemistry
OS	Overall survival
PCR	Polymerase chain reaction
PgR	Progesterone receptor
SAP	Shrimp alkaline phosphatase
TN	Triple-negative
UNG	Uracil-DNA glycosylase

## Introduction

Breast cancer brain metastasis (BCBM) is a growing clinical problem associated with significant morbidity and mortality [1]. Up to 40–50% of women with HER2-positive and triple-negative breast cancers (BC) will develop brain metastasis (BM), whereas its incidence in hormone receptor-positive BC is 14% [2–5]. The application of next generation sequencing technologies has enabled the characterisation of BCs and highlighted that BC subtypes differ in their mutational profiles but overall, the commonest mutated genes are TP53, PIK3CA, GATA3, CDH1, AKT1 [6–11]. Genomic profiling has also demonstrated the complex and diverse molecular landscapes of secondary metastatic BCs [7, 8, 11, 12]. BM sequencing studies have identified differences in their mutational landscape as compared to primary tumours [13–17]. The identification of genomic alterations within BM and the use of targeted therapies against these mutations may improve the clinical outcomes of patients with BCBM [10–17].

In the era of precision medicine and targeted therapies, the choice of anti-cancer therapy is increasingly tailored according to the molecular and/or genomic characterisation of the underlying malignancy. Identifying rare and low-level mutations due to tumour heterogeneity in cancer samples and/or of poor-quality DNA isolated from formalin-fixed, paraffin-embedded (FFPE) tissues entails tools that offer both low-frequency detection and efficient use of starting material. Such tools could, in turn, be utilised for therapeutic decision making and/or development of clinical trials using targeted agents. The UltraSEEK® (Agena Bioscience, San Diego, USA) technology provides a targeted, multiplexed method for detecting rare events, with detection threshold as low as 0.1% on the MassARRAY® system utilising DNA isolated from FFPE tissues, plasma and cerebrospinal fluid [18–21]. Moreover, multiplex

detection of low-frequency mutations is becoming a necessary diagnostic tool for clinical laboratories that must overcome several challenges such as the detection of minor alleles among abundant wild-types, the heterogeneous nature of the tumours and the limited amount of available tissue [18–21]. The UltraSEEK® Breast Cancer panel has been developed to enable the assessment of five commonly mutated genes in breast cancer, TP53, PIK3CA, ERBB2, ESR1 and AKT1. This study aimed to assess the mutational landscape of paired BC and BMs for these known key genomic drivers, utilising the UltraSEEK® BC panel.

## Materials and methods

### Patients

A total of 32 FFPE primary BC samples, with their paired BMs were collected from the Liverpool Tissue Bank and the Walton Research Tissue Bank (WRTB) Liverpool, UK. The cases were stained by immunohistochemistry (IHC) for hormone receptor expression (ER, PgR) and HER2 as previously described [22]. The study was performed in accordance with the Declaration of Helsinki and approved by the WRTB (WRTB 15\_06) and the National Research Ethics Committee (NRES 11/WN003/2). Written consent was in place before anonymised tissue and data were released for research purposes [22].

### DNA extraction and mutation profiling

DNA was isolated from 32 BC and their matched BM cases using the GeneRead DNA FFPE kit (Qiagen, Crawley, UK) and screened using the custom UltraSEEK BC Panel (Agena Bioscience, San Diego, USA). Starting from a single global multiplex polymerase chain reaction (PCR) the panel tests 39 mutations (Table 1) across 5 oncogenes (TP53, PIK3CA,

**Table 1** UltraSEEK breast cancer panel

Genes	Missense mutations	No of mutations
AKT1	pE17K*, pL52R*	2
ERBB2 (HER2)	pG309A, pG309E, pS310F*, pL755R, pL755S, pL755_T759del, pD769H*, pD769Y, pV777L*, pL869R*	10
ESR1	pA283V, pK303R, pE380Q*, pV392I, pS463P, pL536R, pL536Q, pY537C, pY537N*, pY537S, pD538G, pS576L	12
PIK3CA	pN345K, pC420R*, pE542K*, pE545A, pE545K*, pE545Q, pH1047L*, pH1047R	8
TP53	pR175H, pR213X, pY220C, pR248Q, pR248W*, pR273C, pR273H	7
Total	5 genes	39

The UltraSEEK BC panel screens for 39 mutations across 5 common BC oncogenes

\*Multiple assays for these mutations are included in the panel

ESR1, ERBB2 and AKT) in 8 multiplex assays (Supplementary table 1). The number of mutations was defined as the total number of mutations identified in any of the 5 genes per patient. The range of mutations is 0–39 (Table 1). PCR was performed using 10 ng of DNA according to the manufacturer's instructions (Agena Bioscience, San Diego, USA). Amplified products were treated with shrimp alkaline phosphatase (SAP) and the PCR/SAP product was aliquoted in a new 96-well plate for downstream extension and termination reaction according to the manufacturer's instructions. The single-base extended oligonucleotides were captured by streptavidin-coated magnetic beads and biotin-labelled following manufacturer's instructions. The products were then transferred to the MassARRAY System with Chip Prep Module 96 (CPM96) that automatically performs desalting (resin), transfer of analyte and calibrant to the SpectroCHIP® Arrays and loading of SpectroCHIP® Arrays. Data were automatically acquired using the MassARRAY Analyzer. The workflow is presented and summarised in Supplementary Fig. 1.

### Data analysis and statistics

Data were analysed using the Typer software v4.0.26.74 (Agena Bioscience, San Diego, USA). The signal intensity of the mutant allele was normalised against the capture-control peaks (biotin-labelled, non-reactive oligos, used as an internal control) as previously reported [18, 19]. Samples with a mutant allele-call with a signal-to-noise ratio  $\geq 6$  and a z-score  $\geq 7$  were considered positive for the mutation. Positive mutant-calls with z-scores 7–10 were labelled 'L' (low-level confidence) to distinguish from the results with high-level confidence (T), z-score  $> 10$  [18–20]. The z-score is a robust scoring representing the deviation of the minor allele's frequency from the median baseline frequency, as measured by median absolute deviation (MAD) units. The baseline signal distribution or population of that peak is generated by analysing a population of known wild-type samples for each target and capture pre-analytical and background noise inherent to the assay and analyte. The Ultra-SEEK chemistry and methodology has been analytically presented by Mosko et al. [19].

RAWGraphs (<https://rawgraphs.io/>) was used to generate the alluvial diagram illustrating the receptor switching between the primary and metastatic setting. Fisher's Exact test was used to compare the receptor status change versus the number of mutations ( $\leq 3$  vs  $> 3$ ) in the primary BC and Wilcoxon signed-rank paired *t* test (Gaussian approximation) was used to compare the total number of mutations between the paired BC and BMs. Kaplan–Meier (Log-rank) survival analysis was used to determine whether the number of mutations in the primary BC and the receptor status change between BCs and BMs was associated with the

breast–brain metastasis-free survival (BMFS, time between the initial breast surgery and the resection of the BM) and overall survival (OS, time between breast diagnosis/surgery and death from any cause). Given the range of mutations seen in primary breast cancer samples was 0–5 and to enable the greatest contrast within the studied population an arbitrary cut-off of  $> 3$  mutations was chosen following an analysis of groups based on 0–1, 2–3 and 4–5 ( $> 3$ ) mutations in the primary breast cancer (Supplementary Fig. 2). Statistical analysis was performed on GraphPad Prism v5.0 (GraphPad Inc, San Diego, USA).

The OncoKB (<http://oncoKB.org>) and ClinicalTrials.gov (<https://clinicaltrials.gov>) databases were used to identify actionability and ongoing clinical trials on BC using targeted therapies for the mutated genes in this study. The searches on OncoKB were performed for Breast Cancer, Actionable Genes and the following Levels of Evidence: 1. FDA-approval, 2. Standard care, 3. Clinical evidence, 4. Biological evidence, R1/R2. Resistance. The searches on the ClinicalTrials.gov were performed for Breast Cancer, Recruiting, Active (not recruiting), Completed, Adult and selecting for specific gene mutations/alterations for PIK3CA, AKT1, ESR1, ERBB2/HER2 and TP53. Similar work on BCBM mutated genes was recently presented by our group in a systematic review [14].

## Results

### Patient characteristics and receptor switching

Among the 32 primary BCs, 18 (56.2%) were ER-positive/HER2-negative, 4 (12.5%) were ER-positive/HER2-positive, 3 (9.4%) were ER-negative/HER2-positive and 7 (21.9%) were triple-negative (TN). Eight of the 18 (44.4%) ER-positive and all the 4 (100%) ER-positive/HER2-positive primary BCs lost ER expression in BM. The HER2-positive and TN primary BCs maintained their receptor status in the BM. The changes of the receptor status between BCs and their paired BMs are illustrated in the alluvial diagram (Fig. 1A).

### Mutational profiling of primary BCs and their paired BMs

A mutation in any of the five genes was identified in 29 of 32 (90.6%) primary BCs and 28 of 32 (87.5%) BM cases. A total number of 67 and 59 mutations were detected in primary BCs and their paired BMs respectively without significant association in the number of mutations between the paired BC and BM cases ( $p = 0.424$ , median 2 in both BC and BM, Fig. 1B). Out of the 32 paired BCs and BMs, TP53, AKT1, ESR1 and PIK3CA genes were respectively mutated

in 22 (68.8%), 12 (37.5%), 10 (31.3%) and 9 (28.1%) of the primary BCs and in 19 (59.4%), 12 (37.5%), 9 (28.1%) and 9 (28.1%) of the BMs. ERBB2 mutations were detected in 1 out of 32 (3.1%) BC and BM cases. The total number of mutations in each gene, including percentages, is illustrated in Fig. 1C and Supplementary table 2.

### Differences in the number of mutations between primary BCs and their paired BMs

We observed that in 20 of 32 (62.5%) paired cases there were differences in the total number of mutations between the primary BC and paired BM with 11 of 32 (34.4%) and 9 of 32 (28.1%) cases showing either a reduction or increase in the total number of mutations respectively in the paired BMs. In 12 of 32 (37.5%) paired cases the number of mutations did not differ. The scatter-plot showing the number of mutation changes between pairs is illustrated in Fig. 1D. The genomic landscape of the paired BC and their BMs for the individual mutations and the confidence level of detection (T or L) for each one is presented in a matrix format in Fig. 2. We observed that 22/32 (68.75%) of patients lost or gained a mutation in the brain metastatic site in at least one of the 5 clinically relevant genes (Fig. 2). Mutations were detected with similar confidence (T/T and/or L/L) in 18 of 32 (56.3%) paired BC and BM cases and increased to 21 of 32 (65.6%) when mutations with different confidence (L/T) between paired BC and BM cases were included, highlighting the differences in the genomic landscape between primary BC and paired BM. For instance, the AKT1 pE17K mutation was detected in 10 of 32 (31.25%) paired cases; 8 of 32 (25%) with the same confidence levels and 2 of 32 (6.3%) cases with low confidence (L) in the primary and high confidence (T) in paired BM (Fig. 2). The TP53 pR273H was the more prevalent mutation in both BC and BM cases present in 4 of 32 (12.5%) paired cases, 3 of which with similar confidence and 1 with lower confidence in BC than BM (Fig. 2). Representative examples of the different mutation spectra highlighting the differences in the confidence levels (T/T, T/L, -/T) are presented in Fig. 3A.

### Mutations and receptor status change between primary BCs and their paired BMs

The 32 primary BCs contained a total of 67 mutations and hormone receptor-positive cases harboured the most mutations (47/67; 70%), followed by ER-positive/HER2-positive (10/67; 15%) and triple-negatives (9/67; 13.4%), whereas in BMs with a total of 59 mutations, the highest number was observed in triple-negatives (31/59; 52.5%), followed by hormone receptor-positive (21/59; 35.6%) and HER2-positive (7/59; 12%). Of the 32 primary BCs, 27 (84.37%) had 3 or less mutations ( $\leq 3$ ) and 9 of these (33.3%) change

status in BM, whereas 18 (66.7%) maintain their receptors. Of the 5 (15.63%) primary BCs with  $> 3$  mutations, 3 (60%) change status in BM and 2 (40%) maintain their receptors. There was no significant association between the receptor switching and the number of mutations identified by two-tail Fisher's exact test ( $p=0.337$ ). The number of patients, the total number of mutations and the number of mutations in each gene according to the receptor status of BC and BM are presented in Supplementary table 2. All the mutation frequencies for the primary BCs and BMs according to the receptor status are illustrated in Fig. 3B.

### Association of mutations with patient outcome

Patients with primary BCs with  $\leq 3$  mutations had a significantly longer BMFS, than patients whose BCs had  $> 3$  mutations with median BMFS of 28.5 and 12 months respectively ( $p=0.0001$ , HR: 0.011, 95% CI: 0.001–0.112, Fig. 3C). There was no association with OS although the median OS was 53 and 29 months in patients carrying  $\leq 3$  and  $> 3$  mutations respectively ( $p=0.056$ , HR: 0.146, 95% CI: 0.020–1.054, Fig. 3C). Patients with differences in the numbers of mutations between primary BC and BM classified as mutation numbers increasing in BM versus mutation numbers decreasing in BM, showed a significant difference in the brain metastasis-death (time between brain metastasis and death due to any cause) survival outcome ( $p=0.0008$ , HR: 17.72, 95% CI: 3.277–95.87, Supplementary Fig. 3).

When the patients were classified according to the change in ER, PgR and HER2 status between primary BC and BM the median BMFS was 24.5 (receptor change) and 29.5 (no change) ( $p=0.115$ ) months. No significant association was observed with OS ( $p=0.618$ ) either.

### Potentially actionable targets

A search on oncoKB for the actionability of PIK3CA, AKT1, ESR1, and ERBB2/HER2 oncogenic mutations on BC identified 7 protocols, 3 of which are FDA-approved (Alpelisib, Neratinib and Abemaciclib. No protocols were identified for TP53 (Table 2).

Forty-three clinical trials are currently available for BC patients with mutations in these 5 genes as identified within ClinicalTrials.gov (Supplementary table 3), whereas twelve trials specifically recruiting patients with BCBM using targeted therapies for the identified gene mutations/alterations were recently reported [14]. Drugs targeting PIK3CA [Paxalisib (GDC-0084), Buparlisib (BMK120)], ERBB2/HER2 (Neratinib, Afatinib, Pyrotinib, Tucatinib), pathways and/or genes involved in the cell cycle (Abemaciclib, NKTR-102) are currently undergoing assessment in clinical trials either as single agents or in combination with standard of care treatments for BCBM [14].

**Table 2** OncoKB database and gene actionability

Tumour type: breast cancer					
Level	Alteration: oncogenic mutations	No of mutations (%)		Drugs	Citations
		BC (N=32)	BM (N=32)		
1	PIK3CA	10 (15)	10 (17)	Alpelisib + Fulvestrant	3 PI3K inhibition results in enhanced oestrogen receptor function and dependence in hormone receptor-positive breast cancer. Bosch A et al. <i>Sci Transl Med.</i> 2015 PMID: 25,877,889 Alpelisib Plus Fulvestrant in PIK3CA-Altered and PIK3CA-Wild-Type Oestrogen Receptor-Positive Advanced Breast Cancer: A Phase 1b Clinical Trial. Juric D et al. <i>JAMA Oncol.</i> 2019 PMID: 30,543,347 Alpelisib for PIK3CA -Mutated, Hormone Receptor-Positive Advanced Breast Cancer. André F et al. <i>N Engl J Med.</i> 2019 PMID: 31,091,374
3				GDC-0077	3 355TiP Phase III study of GDC-0077 or placebo (pbo) with palbociclib (P) + fulvestrant (F) in patients (pts) with PIK3CA-mutant/hormone receptor-positive/HER2-negative locally advanced or metastatic breast cancer (HR +/HER2- LA/MBC). Turner N et al. <i>Annals Onc.</i> 2020 10.1016/j.annonc.2020.08.457 Juric D et al. Abstract# OT1-08-04, SABCS 2019 Hong R et al. Abstract# PD4-14, SABCS 2017
3				Copanlisib + Fulvestrant	7 First-in-human phase I study of copanlisib (BAY 80-6946), an intravenous pan-class I phosphatidylinositol 3-kinase inhibitor, in patients with advanced solid tumours and non-Hodgkin's lymphomas. Patnaik A et al. <i>Ann Oncol.</i> 2016 PMID: 27,672,108 Exceptional Response to Copanlisib in a Heavily Pretreated Patient With PIK3CA-Mutated Metastatic Breast Cancer. Spathas N et al. <i>JCO Prec Onc.</i> 2020 10.1200/PO.19.00049 Staben et al. Abstract# DDT02-01, AACR 2017 De et al. Abstract# 3438, AACR 2019 O'Brien, NA et al. Abstract P3-04-15. <i>Cancer Research</i> , 2017 De et al. Abstract# P2-03-08, SABCS 2018 Edgar et al. Abstract# 156, AACR 2017

**Table 2** (continued)

Tumour type: breast cancer

Level	Alteration: oncogenic mutations	No of mutations (%)		Drugs	Citations
		BC ( <i>N</i> =32)	BM ( <i>N</i> =32)		
3	AKT1	12 (18)	12 (20.3)	AZD5363	<p>4 Preclinical pharmacology of AZD5363, an inhibitor of AKT: pharmacodynamics, antitumour activity, and correlation of monotherapy activity with genetic background. Davies BR et al. <i>Mol Cancer Ther.</i> 2012 PMID: 22,294,718</p> <p>Discovery of 4-amino-N-[(1S)-1-(4-chlorophenyl)-3-hydroxypropyl]-1-(7H-pyrrolo[2,3-d]pyrimidin-4-yl)piperidine-4-carboxamide (AZD5363), an orally bioavailable, potent inhibitor of Akt kinases. Addie M et al. <i>J Med Chem.</i> 2013 PMID: 23,394,218</p> <p>AKT Inhibition in Solid Tumours With AKT1 Mutations. Hyman DM et al. <i>J Clin Oncol.</i> 2017 PMID: 28,489,509</p> <p>Tumours with AKT1E17K Mutations Are Rational Targets for Single Agent or Combination Therapy with AKT Inhibitors. Davies BR et al. <i>Mol Cancer Ther.</i> 2015 PMID: 26,351,323</p>
1	ERBB2/HER2	1 (1.5)	1 (1.7)	Neratinib	<p>3 Activating HER2 mutations in HER2 gene amplification negative breast cancer. Bose R et al. <i>Cancer Discov.</i> 2013 PMID: 23,220,880</p> <p>The major lung cancer-derived mutants of ERBB2 are oncogenic and are associated with sensitivity to the irreversible EGFR/ERBB2 inhibitor HKI-272. Minami Y et al. <i>Oncogene.</i> 2007 PMID: 17,311,002</p> <p>HER kinase inhibition in patients with HER2- and HER3-mutant cancers. Hyman DM et al. <i>Nature.</i> 2018 PMID: 29,420,467</p>

**Table 2** (continued)

Tumour type: breast cancer					
Level	Alteration: oncogenic mutations	No of mutations (%)		Drugs	Citations
		BC (N=32)	BM (N=32)		
3	ESR1	13 (19.4)	11 (18.6)	AZD9496	2 Efficacy of a novel orally active SERD AZD9496 against hormone dependent post-menopausal breast cancer depends on inhibition of cellular aromatase activity. Kazi A et al. J Ster Biochem Mol Biol. 2020 ISSN: 0960–0760  A Randomised, Open-label, Presurgical, Window-of-Opportunity Study Comparing the Pharmacodynamic Effects of the Novel Oral SERD AZD9496 with Fulvestrant in patients with Newly Diagnosed ER+ HER2 – Primary Breast Cancer. Robertson JFR et al. 2020 PMID: 32,234,755
1				Abemaciclib + Fulvestrant	4 Analysis of Overall Survival Benefit of Abemaciclib Plus Fulvestrant in Hormone Receptor-Positive, ERBB2-Negative Breast Cancer. Gil-Sierra MD et al. JAMA Oncol. 2020 10.1001/jamaoncol.2020.1516  The Effect of Abemaciclib Plus Fulvestrant on Overall Survival in Hormone Receptor-Positive, ERBB2-Negative Breast Cancer That Progressed on Endocrine Therapy-MONARCH 2: A Randomised Clinical Trial. Sledge GW Jr et al. JAMA Oncol. 2019 PMID: 31,563,959  Activating ESR1 Mutations Differentially Affect the Efficacy of ER Antagonists. Toy W et al. Cancer Discov. 2017 PMID: 27,986,707  Plasma ESR1 Mutations and the Treatment of Oestrogen Receptor-Positive Advanced Breast Cancer. Fribbens C et al. J Clin Oncol. 2016 PMID: 27,269,946
NA	TP53	31 (46.3)	25 (42.4)		
	Total no of mutations	67	59		

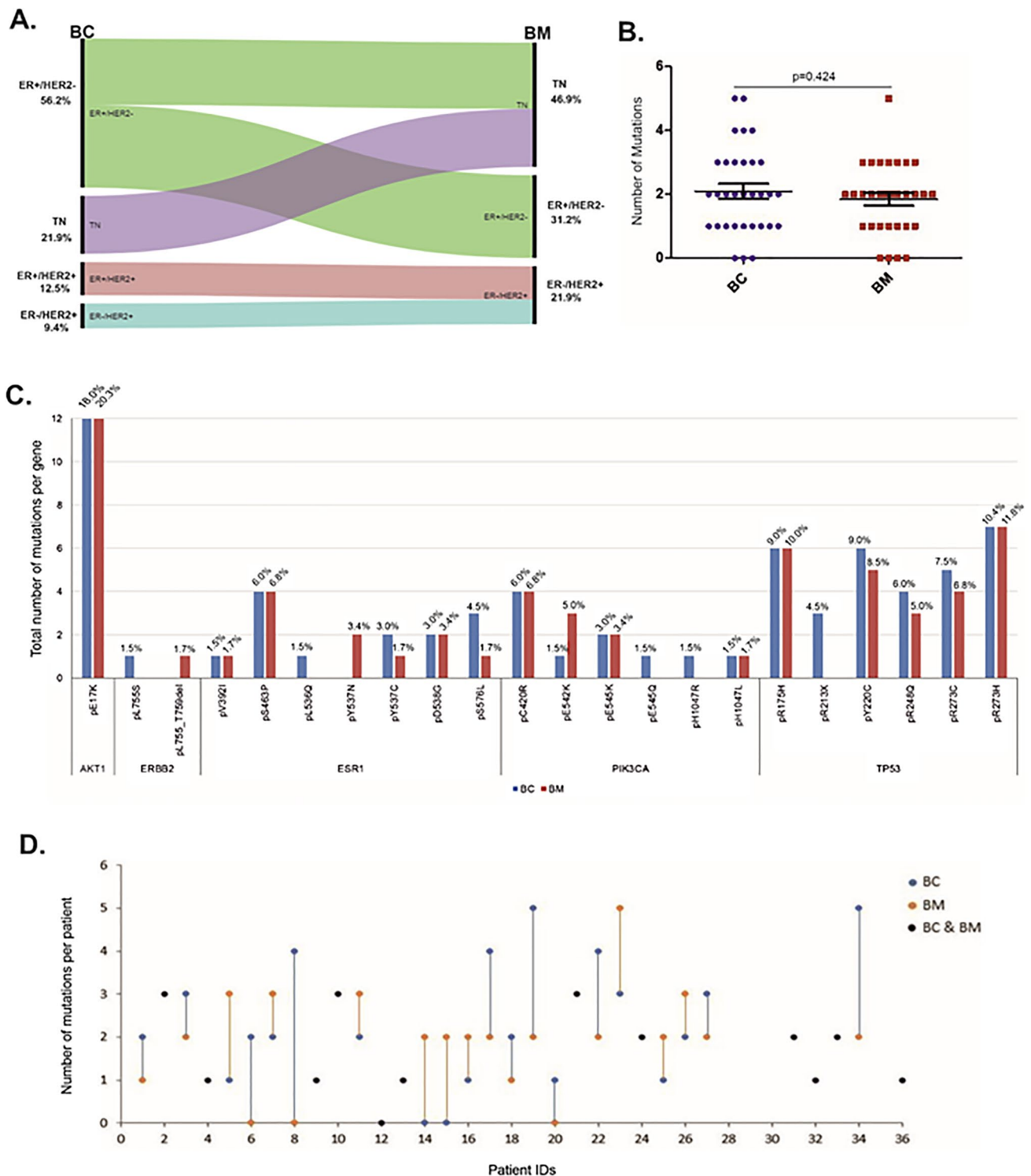
A search on the oncoKB for the actionability of PIK3CA, AKT1, ESR1, ERBB2/HER2 and TP53 oncogenic mutations on breast cancer identified 7 protocols. 1. FDA-approval, 3. Clinical evidence

NA Not available

## Discussion

In this study, we assessed for the presence of mutations within key BC genes utilising the UltraSEEK® technology in a paired cohort of BCs and BMs. A mutation in at least one of the five genes (TP53, PIK3CA, ERBB2, ESR1, AKT1) was identified in most cases, with 90.6% of primary BC and 87.5% of the paired BMs having at least one mutation. The observed similarities regarding the frequency of the mutated genes reflect the nature of the UltraSEEK® BC panel that was designed to target actionable genes present in all the key BC subtypes. Twenty-two out of the 32 patients in this study (68.75%), lost or gained a mutation in the brain metastatic site in at least one of the 5 clinically relevant genes (Fig. 2) highlighting the importance of screening for mutations in the primary and metastatic site.

The actionability of these mutated genes in primary BC and BM is presented in Table 2 and in a recent systematic review [14]. The detection of ESR1 mutations in the primary tumours also highlights the sensitivity of the assay [19]. Although ESR1 mutations were more commonly identified in metastatic BCs [23, 24], the use of the sensitive droplet-digital PCR reported higher frequencies in primary tumours [25, 26]. The identification of therapeutic strategies in breast cancers harbouring ESR1 mutants is an area of active interest. Fulvestrant has demonstrated poor clinical activity in ESR1-mutated BC [27, 28], whereas bazedoxifene and lasofoxifene have demonstrated activity in pre-clinical models of ESR1-mutated BC [29, 30]. The efficacy of lasofoxifene is currently being explored in the ELAINE trial (NCT03781063) in patients with ESR1-mutated BCs (Supplementary table 3). Interestingly, in our cohort, ESR1

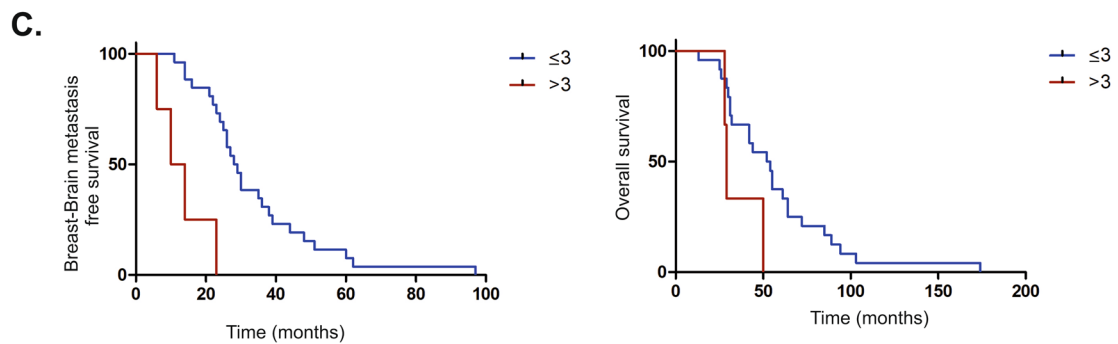
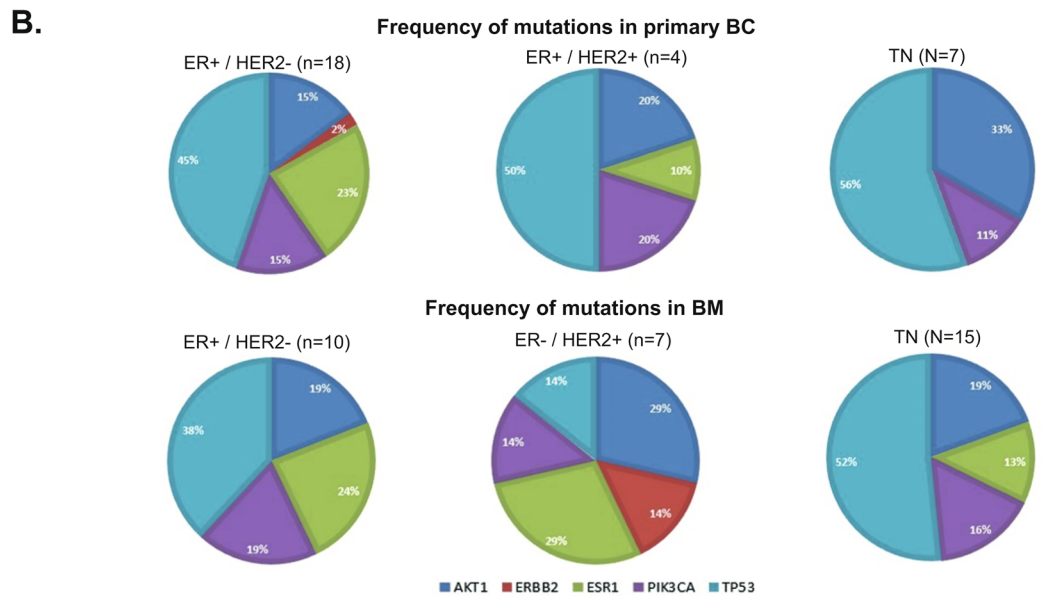
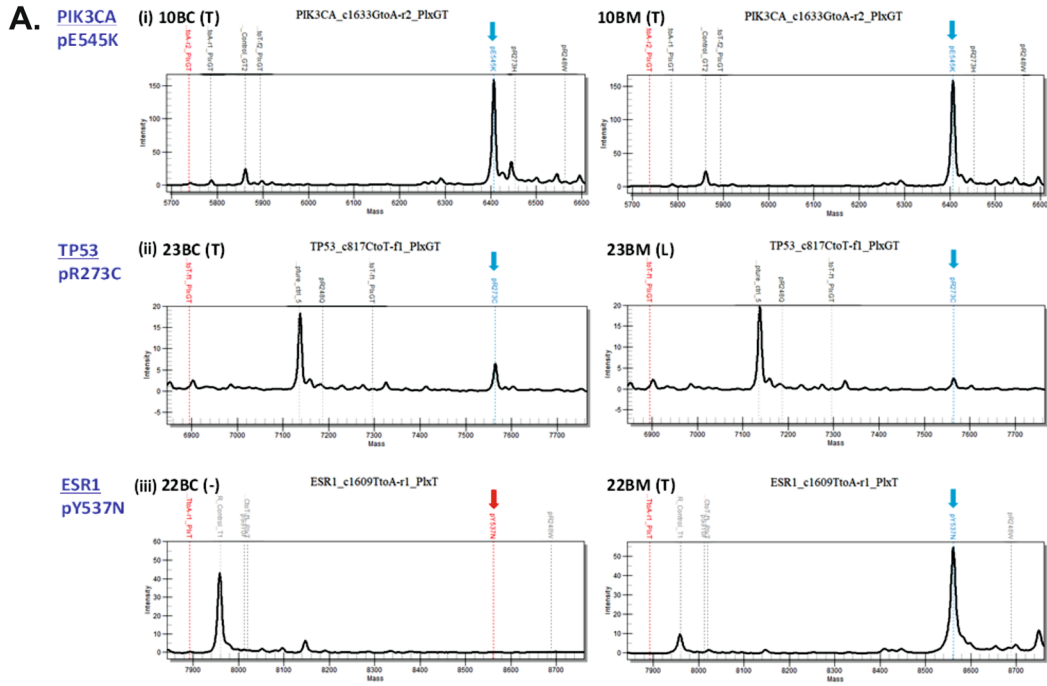


**Fig. 1** Receptor switch and mutation detection in paired BC and BM samples. **A** The Alluvial diagram illustrates the receptor (ER, PgR, HER2) switch between primary BC and their paired BM cases including % for each subtype. **B** No significant association was identified ( $p=0.484$ ) in the number of mutations between primary BCs and their paired BMs. **C** Total number of mutations per gene identified in both BC (blue) and BM (red) samples. The percentage of each

mutation over the total number of mutations is presented on the top of each bar and on supplementary table 3. **D** Scatter-plot showing the number of mutations for each pair. Blue dots-lines and red dots-lines represent the number of mutations changing between BC and from BM. Black dots represent the cases with similar number of mutations in both the primary BC and its paired BM







**Fig. 3** Mutation detection in paired BC and BM samples. **A** Representative examples of mutation spectra between paired BC/BM samples with identified mutations as (i) T/T, (ii) T/L and (iii) (-/T) with relative intensity on the y-axis and mass/charge on the x-axis. **B** The frequency (percentages) of the identified mutations for each of the 5 genes according to the ER, PgR and HER2 receptor status in primary BC and in paired BM. The exact number of mutations is presented in Supplementary Table 4. One of the 3 ER-negative/HER2-positive primary BC samples was carrying an ESR1 mutation, whereas no mutations were identified in the other 2 samples and they were not included in the pie-charts. **C** Kaplan–Meier (Log-rank) survival plots of breast–brain metastasis-free survival (BMFS) and overall survival (OS). Patients carrying  $\leq 3$  mutations had a significantly better BMFS ( $p=0.0001$ , HR: 0.011, 95% CI: 0.001–0.112), than patients with  $> 3$  mutations. There was no association with OS ( $p=0.056$ , HR: 0.146, 95% CI: 0.020–1.054) and number of mutations

primary tumour that are present in the metastatic site (low or high) is of clinical relevance as these mutations should be targeted with the appropriate therapeutic regimens aimed at the brain metastatic site. The fact that only 37.5% of mutations in the 5 chosen genes are conserved between the primary and just one major metastatic site, the brain, suggests that, in general, compounds targeting these mutations identified solely in the primary breast tumour are unlikely to be successful in the majority of advanced/metastatic patients. Therefore, it seems to be necessary to sample metastases, as well as the primary tumour to identify somatic mutations to tumours at both sites, to predict more accurately whether a patient will respond to such chemical interventions. The differences in the mutational landscape could be attributed to the clonal evolution process, the selective pressure of different therapeutic regimens and the receptor switching between primary BC and metastasis. Evidence of clonal remodelling between primary tumours and metastases associated with the clinical subtype conversion was recently presented, but the most frequently mutated genes in primary tumours were also identified in metastases independent of the tumour subtype [12]. We did not observe significant differences in the frequently mutated genes in relation to the subtypes in BC and BM and there was no significant association between receptor switching and number of mutations. This could also be attributed to the small number of genes present in the targeted BC mutation panel and the small number of mutations identified in our cohort. Nevertheless, within our cohort, patients carrying  $\leq 3$  mutations had a significantly better BMFS ( $p=0.0001$ ), than patients with  $> 3$  mutations indicating that the higher number of mutations correlates to worst prognosis (metastasis-free survival).

A limitation of the MassARRAY UltraSEEK technology and therefore, a limitation of this study, in comparison to next generation sequencing on the identification of mutations is the use of predefined mutations across different oncogenes. Although, it cannot detect unknown mutations and copy number alterations, it is more cost-effective

and could be easier applied in a clinical setting [21, 46, 47]. Another limitation is the number of paired samples in the study, although it is higher than the number of paired BCBM samples reported in other genomic studies [14]. The challenges to obtain BM samples for sequencing including the inherent risks of neurosurgery, as samples can only be taken when surgical resection is clinically indicated, make longitudinal studies of the changes in the BM genome unethical. The increasing use of stereotactic surgery (SRS) has reduced the need for surgical resection but also, the availability of tissue. The alternative use of circulating cell-free DNA (cfDNA) in the CSF and plasma is under investigation and in the future patients will be able to have tailored treatments based on the results of sequencing cfDNA from CSF rather than relying on the genomics of the primary lesion [20, 46, 47]. Nevertheless, these data complement the current literature as it highlights the presence of actionable mutations in clinically important genes both in BC and BM identified by a sensitive, targeted, comprehensible technology, potentially useful in a routine clinic. The fact that the limited number of mutations detected and the change in the number of mutations in the metastatic site correlate to survival outcomes reinforces the importance of patient mutation screening.

In summary, our data highlight the presence of clinically important and actionable mutations in AKT1, ESR1, PIK3CA, TP53 and ERBB2 genes in BC and in BCBM as identified by the UltraSEEK BC panel that provides a powerful tool to investigate low abundance mutations and could be potentially useful in a clinical environment [25, 26]. These mutations could be used to identify patients resistant to certain therapeutic regimens and enable the development of more tailored clinical studies utilising targeted agents or combinations of them in the brain metastatic setting.

**Supplementary Information** The online version contains supplementary material available at <https://doi.org/10.1007/s10549-021-06364-8>.

**Acknowledgements** We would like to acknowledge the Liverpool Experimental Cancer Medicine Centre for providing infrastructure support for this research (Grant Reference: C18616/A25153), the Clatterbridge Cancer Charity and the Liverpool University Hospitals NHS Foundation Trust for support.

**Author contributions** All authors contributed to the experimental design, its implementation, analysis and interpretation of the data. All authors were involved in the writing of the manuscript and have read and approved the final version. AG: conceptualisation, investigation, formal analysis, writing and editing. AS: methodology, software, validation, data curation, writing and editing. LE: methodology, software, validation. RZ: formal analysis, writing and editing. CC: investigation, resources. NH: resources, investigation, data curation. APH: investigation. PSR: resources, writing and editing. DI: methodology, software, validation, resources. MDJ: resources, writing and editing. CP: conceptualisation, resources, writing and editing, supervision.

**Funding** The UltraSEEK Breast Cancer panel, assays and reagents were kindly provided from Agena Bioscience GmbH, Hamburg, Germany.

**Data availability** All data generated or analysed during this study are included in this published article and its supplementary information files.

## Declarations

**Conflict of interest** The authors declare no conflicts of interest.

**Ethical approval** The study was performed in accordance with the Declaration of Helsinki and approved by the WRTB (WRTB15\_06) and the National Research Ethics Committee (NRES 11/WN003/2)

**Informed consent** Written consent was in place before anonymised tissue and data were released for research purposes.

**Open Access** This article is licensed under a Creative Commons Attribution 4.0 International License, which permits use, sharing, adaptation, distribution and reproduction in any medium or format, as long as you give appropriate credit to the original author(s) and the source, provide a link to the Creative Commons licence, and indicate if changes were made. The images or other third party material in this article are included in the article's Creative Commons licence, unless indicated otherwise in a credit line to the material. If material is not included in the article's Creative Commons licence and your intended use is not permitted by statutory regulation or exceeds the permitted use, you will need to obtain permission directly from the copyright holder. To view a copy of this licence, visit <http://creativecommons.org/licenses/by/4.0/>.

## References

- Frisk G, Svensson T, Bäcklund LM et al (2012) Incidence and time trends of brain metastases admissions among breast cancer patients in Sweden. *Br J Cancer* 106:1850–1853
- Nam B-H, Kim SY, Han H-S et al (2008) Breast cancer subtypes and survival in patients with brain metastases. *Breast Cancer Res* 10:R20
- Berghoff A, Bago-Horvath Z, De Vries C et al (2012) Brain metastases free survival differs between breast cancer subtypes. *Br J Cancer* 106:440–446
- Gabos Z, Sinha R, Hanson J et al (2006) Prognostic significance of human epidermal growth factor receptor positivity for the development of brain metastasis after newly diagnosed breast cancer. *J Clin Oncol* 24:5658–5663
- Heitz F, Harter P, Lueck HJ et al (2009) Triple-negative and HER2-overexpressing breast cancers exhibit an elevated risk and an earlier occurrence of cerebral metastases. *Eur J Cancer* 45:2792–2798
- Angus L, Smid M, Wilting SM et al (2019) The genomic landscape of metastatic breast cancer highlights changes in mutation and signature frequencies. *Nat Genet* 51:1450–1458
- Bertucci F, Ng CKY, Patsouris A et al (2019) Genomic characterization of metastatic breast cancers. *Nature* 569:560–564
- Lefebvre C, Bachelot T, Filleron T et al (2016) Mutational profile of metastatic breast cancers: a retrospective analysis. *PLoS Med* 13:e1002201
- Pereira B, Chin S-F, Rueda OM et al (2016) The somatic mutation profiles of 2,433 breast cancers refine their genomic and transcriptomic landscapes. *Nat Commun* 7:11479
- Nik-Zainal S, Morganella S (2017) Mutational signatures in breast cancer: the problem at the DNA level. *Clin Cancer Res* 23:2617–2629
- Muller KE, Marotti JD, de Abreu FB et al (2016) Targeted next-generation sequencing detects a high frequency of potentially actionable mutations in metastatic breast cancers. *Exp Mol Pathol* 100:421–425
- Lluch A, Gonzalez-Angulo AM, Casadevall D et al (2019) Dynamic clonal remodelling in breast cancer metastases is associated with subtype conversion. *Eur J Cancer* 120:54–64
- Brastianos PK, Carter SL, Santagata S et al (2015) Genomic characterization of brain metastases reveals branched evolution and potential therapeutic targets. *Cancer Discov* 5:1164–1177
- Morgan A, Giannoudi A, Palmieri C (2021) The genomic landscape of breast cancer brain metastases: a systematic review. *Lancet Oncol* 22:E7–E17
- De Mattos-Arruda L, Mayor R, Ng CKY et al (2015) Cerebrospinal fluid-derived circulating tumour DNA better represents the genomic alterations of brain tumours than plasma. *Nat Commun* 6:8839
- Lee JY, Park K, Lim SH et al (2015) Mutational profiling of brain metastasis from breast cancer: matched pair analysis of targeted sequencing between brain metastasis and primary breast cancer. *Oncotarget* 6:43731–43742
- Saunus JM, Quinn MC, Patch AM et al (2015) Integrated genomic and transcriptomic analysis of human brain metastases identifies alterations of potential clinical significance. *J Pathol* 237:363–378
- Fleitas T, Ibarrola-Villava M, Ribas G, Cervantes A (2016) MassARRAY determination of somatic oncogenic mutations in solid tumors: Moving forward to personalised medicine. *Cancer Treat Rev* 49:57–64
- Mosko MJ, Nakorchevsky AA, Flores E et al (2016) Ultrasensitive detection of multiplexed somatic mutations using MALDI-TOF mass spectrometry. *J Mol Diagn* 18:23–31
- Gray ES, Witkowski T, Pereira M et al (2019) Genomic analysis of circulating tumour DNA using a melanoma-specific UltraSEEK oncogene panel. *J Mol Diagn* 21:418–426
- Toomey S, Carr A, Mezynski MJ et al (2020) Identification and clinical impact of potentially actionable somatic oncogenic mutations in solid tumor samples. *J Trans Med* 18:99
- Giannoudis A, Clarke K, Zakaria R et al (2019) A novel panel of differentially expressed microRNAs in breast cancer brain metastasis may predict patient survival. *Sci Rep* 9:18518
- Toy W, Weir H, Razavi P et al (2017) Activating ESR1 mutations differentially affect the efficacy of ER antagonists. *Cancer Discov* 7:277–287
- Lei JT, Gou X, Seker S, Ellis MJ (2019) ESR1 alterations and metastasis in estrogen receptor positive breast cancer. *J Cancer Metastasis Treat* 5:38
- Wang P, Bahreini A, Gyanchandani R et al (2016) Sensitive detection of mono- and polyclonal ESR1 mutations in primary tumors, metastatic lesions, and cell-free DNA of breast cancer patients. *Clin Cancer Res* 22:1130–1137
- Gelsomino L, Gu G, Rechoum Y et al (2016) ESR1 mutations affect anti-proliferative responses to tamoxifen through enhanced cross-talk with IGF signaling. *Breast Cancer Res Treat* 157:253–265
- Macpherson I, Kilburn L, Kernaghan S et al (2020) Results from plasmaMATCH trial treatment cohort A: a phase II trial of extended-dose fulvestrant in patients with an ESR1 mutation identified via ctDNA screening (CRUK/15/010). *Cancer Res*. <https://doi.org/10.1158/1538-7445>

28. Spoerke JM, Gendreau S, Walter K et al (2016) Heterogeneity and clinical significance of ESR1 mutations in ER-positive metastatic breast cancer patients receiving fulvestrant. *Nat Commun* 7:11579
29. Fanning SW, Jeselsohn R, Dharmarajaet V et al (2018) The SERM/SERD bazedoxifene disrupts ESR1 helix 12 to overcome acquired hormone resistance in breast cancer cells. *eLife* 7:e37161
30. Andreano KJ, Baker JG, Park S et al (2020) The dysregulated pharmacology of clinically relevant ESR1 mutants is normalized by ligand-activated WT receptor. *Mol Cancer Ther* 19:1395–1405
31. Silwal-Pandit L, Vollan HK, Chin SF et al (2014) TP53 mutation spectrum in breast cancer is subtype specific and has distinct prognostic relevance. *Clin Cancer Res* 20:3569–3580
32. Dobes P, Podhorec J, Coufal O et al (2014) Influence of mutation type on prognostic and predictive values of TP53 status in primary breast cancer patients. *Oncol Rep* 32:1695–1702
33. Basho RK, de Melo GD, Ueno NT et al (2016) Clinical outcomes based on multigene profiling in metastatic breast cancer patients. *Oncotarget* 7:76362–76373
34. Ungerleider NA, Rao SG, Shahbandi A et al (2018) Breast cancer survival predicted by TP53 mutation status differs markedly depending on treatment. *Breast Cancer Res* 20:115
35. Ladds MJGW, Laín S (2019) Small molecule activators of the p53 response. *J Mol Cell Biol* 11:245–254
36. Sanz G, Singh M, Peugeot S et al (2019) Inhibition of p53 inhibitors: progress, challenges and perspectives. *J Mol Cell Biol* 11:586–599
37. Bose R, Kavuri SM, Searleman AC et al (2013) Activating HER2 mutations in HER2 gene amplification negative breast cancer. *Cancer Discov* 3:224–237
38. Cocco E, Lopez S, Santin AD, Scaltriti M (2019) Prevalence and role of HER2 mutations in cancer. *Pharmacol Ther* 199:188–196
39. André F, Ciruelos E, Rubovszky G et al (2019) Alpelisib for PIK3CA-Mutated, hormone receptor-positive advanced breast cancer. *N Engl J Med* 380:1929–1940
40. Batalini F, Moulder SL, Winer EP et al (2020) Response of brain metastases from PIK3CA-mutant breast cancer to Alpelisib. *JCO Precis Oncol* 4:572–578
41. Ippen FM, Alvarez-Breckenridge CA, Kuter BM et al (2019) The dual PI3K/mTOR pathway inhibitor GDC-0084 achieves antitumor activity in PIK3CA-mutant breast cancer brain metastases. *Clin Cancer Res* 25:3374–3383
42. Rudolph M, Anzeneder T, Schulz A et al (2016) AKT1 E17K mutation profiling in breast cancer: prevalence, concurrent oncogenic alterations, and blood-based detection. *BMC Cancer* 16:622
43. Davies BR, Guan N, Logie A et al (2015) Tumors with AKT1 E17K mutations are rational targets for single agent or combination therapy with AKT inhibitors. *Mol Cancer Ther* 14:2441–2451
44. Hyman DM, Smyth LM, Donoghue MTA et al (2017) AKT Inhibition in solid tumors with AKT1 mutations. *J Clin Oncol* 35:2251–2259
45. Hu Z, Li Z, Ma Z, Curtis C (2020) Multi-cancer analysis of clonality and the timing of systemic spread in paired primary tumours and metastases. *Nat Genet* 52:701–708
46. Gorges K, Wiltfang L, Gorges TM et al (2019) Intra-patient heterogeneity of circulating tumor cells and circulating tumor DNA in blood of melanoma patients. *Cancers* 11:1685
47. Belloum Y, Janning M, Mohme M et al (2020) Discovery of targetable genetic alterations in NSCLC patients with different metastatic patterns using a MassARRAY-based circulating tumor DNA assay. *Cells* 9:2337

**Publisher's Note** Springer Nature remains neutral with regard to jurisdictional claims in published maps and institutional affiliations.