

Kent Academic Repository

Full text document (pdf)

Citation for published version

Hilton, Kira L.F., Manwani, Chandni, Boles, Jessica E., White, Lisa J., Ozturk, Sena, Garrett, Michelle D. and Hiscock, Jennifer R. (2021) The phospholipid membrane compositions of bacterial cells, cancer cell lines and biological samples from cancer patients. *Chemical Science*, 12 . pp. 13273-13282. ISSN 2041-6520.

DOI

<https://doi.org/10.1039/D1SC03597E>

Link to record in KAR

<https://kar.kent.ac.uk/90289/>

Document Version

Publisher pdf

Copyright & reuse

Content in the Kent Academic Repository is made available for research purposes. Unless otherwise stated all content is protected by copyright and in the absence of an open licence (eg Creative Commons), permissions for further reuse of content should be sought from the publisher, author or other copyright holder.

Versions of research

The version in the Kent Academic Repository may differ from the final published version.

Users are advised to check <http://kar.kent.ac.uk> for the status of the paper. **Users should always cite the published version of record.**

Enquiries

For any further enquiries regarding the licence status of this document, please contact:

researchsupport@kent.ac.uk

If you believe this document infringes copyright then please contact the KAR admin team with the take-down information provided at <http://kar.kent.ac.uk/contact.html>

Cite this: *Chem. Sci.*, 2021, 12, 13273

The phospholipid membrane compositions of bacterial cells, cancer cell lines and biological samples from cancer patients†

Kira L. F. Hilton,^{‡a} Chandni Manwani,^{‡ab} Jessica E. Boles,^a Lisa J. White,^a Sena Ozturk,^a Michelle D. Garrett^{id}*^b and Jennifer R. Hiscock^{id}*^a

While cancer now impacts the health and well-being of more of the human population than ever before, the exponential rise in antimicrobial resistant (AMR) bacterial infections means AMR is predicted to become one of the greatest future threats to human health. It is therefore vital that novel therapeutic strategies are developed that can be used in the treatment of both cancer and AMR infections. Whether the target of a therapeutic agent be inside the cell or in the cell membrane, it must either interact with or cross this phospholipid barrier to elicit the desired cellular effect. Here we summarise findings from published research into the phospholipid membrane composition of bacterial and cancer cell lines and biological samples from cancer patients. These data not only highlight key differences in the membrane composition of these biological samples, but also the methods used to elucidate and report the results of this analogous research between the microbial and cancer fields.

Received 1st July 2021
Accepted 21st September 2021

DOI: 10.1039/d1sc03597e

rsc.li/chemical-science

Introduction

Cancer remains one of the most significant threats to human health, resulting in around 10 million deaths worldwide in 2020.¹ However, it has been predicted that by the year 2050, an alarming rise in the rates of antimicrobial resistant (AMR) bacterial infections will result in approximately 10 million deaths globally per year, matching the number of deaths currently caused by cancer.²

Cancer is caused by gene mutations that can progressively drive the transformation of normal human cells into a malignant form.³ Being able to therapeutically target the differences between cancer and normal cells is therefore key for the effective treatment of this disease.⁴ However, many currently marketed cancer drugs exhibit high levels of toxicity towards normal cells, due to the biological similarity that remains between them and their cancerous counterparts.⁵ This means that the therapeutic efficacy of these agents can be limited by deleterious side effects, including neuro- and cardio-toxicity.^{6,7} Intrinsic and acquired resistance to these therapeutic agents is also an issue.⁸

While bacteria possess a far greater degree of structural diversity compared to healthy eukaryotic cells, making them easier to selectively target, AMR has given rise to bacteria that are resistant to all currently marketed antimicrobial agents.⁹ Moreover, a 34 year hiatus in the identification of novel antibiotics,¹⁰ primarily caused because of the costs associated with the discovery of new drugs, combined with poor market returns,^{9,11,12} has hampered the development of novel antimicrobial therapeutic agents to meet the growing challenge from AMR infections.

However, despite the many differences between normal human cells, their cancerous counterparts and bacteria, the cytosol of each is packaged within a cell membrane, that plays essential roles in diverse processes including cellular communication,¹³ energy storage¹⁴ and structural rigidity.¹⁵ A major, but more commonly overlooked constituent of this membrane are the lipids. These amphiphilic small molecules, which incorporate a hydrophilic head group and hydrophobic tail group,¹⁶ can be split into three main classes: glycerophospholipids (commonly referred to as phospholipids), sphingolipids, and sterols (mainly cholesterol in mammals).¹⁷ The general structures of these lipids are shown in Fig. 1.

Lipid molecules self-assemble, resulting in the formation of a semi-permeable bilayer, in which the polar lipid head groups interact with the aqueous environment, while the hydrophobic tail groups are concealed within the structures core. These bilayers allow passive diffusion of small neutral molecules (O₂, CO₂) and solvents (H₂O), but prevent the diffusion of larger molecules (*e.g.* glucose) and ionic species (Na⁺, Cl⁻).¹⁸ The incorporation of proteins, carbohydrates and other molecular

^aSchool of Physical Sciences, University of Kent, Canterbury, Kent, CT2 7NH, UK. E-mail: J.R.Hiscock@Kent.ac.uk

^bSchool of Biosciences, University of Kent, Canterbury, Kent, CT2 7NJ, UK. E-mail: M.D.Garrett@Kent.ac.uk

† Electronic supplementary information (ESI) available: This includes full data tables, listing the phospholipid compositions of the bacterial, cancer cell lines and biological samples from cancer patients. See DOI: 10.1039/d1sc03597e

‡ Denotes equal scientific input and joint authorship status.



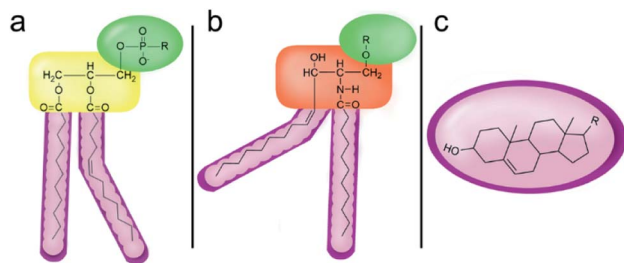


Fig. 1 General structure of: (a) glycerophospholipids; (b) sphingolipids and; (c) sterols. The hydrocarbon chain length and the degree of saturation can differ. Pink = hydrophobic residue. Yellow = glycerol linking group. Orange = sphingosine linker. Green = hydrophilic residue.

species within these phospholipid bilayers results in the production of the fully functioning cell membrane, that is able to control the composition of the intracellular environment through closely-regulated molecular transport events.^{18,19}

Of the three main classes of lipid found in the cell membrane, phospholipids represent the most prevalent and structurally significant. Alterations to the general chemical structure of the phospholipid head and tail groups, gives rise to an array of amphiphilic molecules, each exhibiting different physicochemical properties. A summary of these structural modifications accompanied by common phospholipid nomenclature has been provided for reference in Tables 1 and 2.²⁰ It is important to note that fatty acid tails not only vary in length (typically between 14 and 24 carbon atoms),²¹ but also saturation.^{21,22} Furthermore, R group modifications also occur within the phospholipid head group.²⁰ This leads to high levels of chemical and conformational diversity. Further compositional

diversity within the cell membrane is brought about by variation in the relative proportion of the different lipids present within it.¹⁷ It is because of the complexity associated with these amphiphilic molecules, combined with the limitations associated with the construction of synthetic systems, such as membrane transition temperatures, availability of phospholipid samples and associated purchase costs, that we have chosen to limit the focus of our discussion within this review to the phospholipid headgroups only. However, further information relating to the alkyl component of the phospholipids discussed can be found within the ESI,[†] where available.

As important as the phospholipid component of a cell membrane is for cell viability, it can act as a barrier for effective drug delivery,^{23–25} or become the cause of cellular resistance.^{26,27} Alternatively, it can act as a drug target, where cell death is the desired therapeutic outcome.^{28–30} Therefore, understanding interactions between existing or proposed new drugs and phospholipid membranes is of great importance. Examples are emerging of novel membrane-targeting technologies, designed to alter membrane fluidity³¹ or permeability.³² Craik and co-workers have designed a novel class of cyclotides identified as potential anticancer therapeutic agents.³³ Furthermore, O'Shea and co-workers have shown that the anticancer agent, Ophiobolin A (OPA) functions through interaction with specific phospholipids leading to the formation of cytotoxic adducts that cause irreversible lipid bilayer destabilisation.³⁴ Gale and co-workers have developed low molecular weight synthetic anion transporter technologies,^{35–37} whilst Jolliffe and co-workers, have recently developed a fluorogenic probe for cell surface PS.³⁸

Additionally, there are multiple examples of antimicrobial peptides (AMP) where the mode of action is known to rely upon

Table 1 Summary of phospholipid structures, the position of the R group is identified in Fig. 1a.²⁰ Overall charge = charge of phospholipid under physiological conditions

Lipid	R-group	Overall charge
Phosphatidic acid (PA)		-1
Phosphatidylethanolamine (PE)		0
Phosphatidylcholine (PC)		0
Phosphatidylglycerol (PG)		-1
Phosphatidylserine (PS)		-1
Phosphatidylinositol (PI)		-1
Cardiolipin (CL)		-2
Lysyl-PG		+1



Table 2 Other lipids included in this review. The saturation and length of the hydrocarbon chain can differ.²⁰ Overall charge = charge of lipid under physiological conditions

Lipid	Structure	Overall charge
Lyso-PA		-1
Lyso-PE		0
Lyso-PC		0
Lyso-PI		-1
Lyso-CL		-2
Diacylglycerol (DAG)		0
Lipid A		-2
Sphingomyelin (SM)		0
Lipoteichoic acid		N/A

interaction with, and destabilisation of, bacterial phospholipid membranes.³⁹ Finally, within the scope of our own work, we have shown that a novel class of supramolecular self-associating amphiphiles (SSAs) can coordinate to and permeate both bacterial⁴⁰ and cancer cell membranes,⁴¹ causing SSAs to be identified as anticancer agents,⁴¹ antimicrobials^{40,42,43} and efficacy enhancers for known therapeutic agents.^{41,44}

The analysis herein seeks to aid the effort to understand and characterise interactions between therapeutic candidates and phospholipid membranes by creating a resource detailing the phospholipid membrane composition of cancer and bacterial cells.

Phospholipid composition of bacterial membranes

Within the scope of this review, we have focused our efforts detailing the phospholipid composition of the ESKAPE pathogens, along with the commonly used models of Gram-negative (*Escherichia coli* – *E. coli*) and Gram-positive (*Bacillus subtilis* – *B. subtilis*) organisms. The ESKAPE pathogens are a group of six nosocomial bacteria (*Enterococcus faecium* – *E. faecium*,

Staphylococcus aureus – *S. aureus*, *Klebsiella pneumoniae* – *K. pneumoniae*, *Acinetobacter baumannii* – *A. baumannii*, *Pseudomonas aeruginosa* – *P. aeruginosa*, and *Enterobacter* spp.) that the CDC has listed as the ‘biggest’ threats to human health.^{45–50} This is due to the ability of these bacteria to evolve new resistance mechanisms in addition to those currently identified for this group of pathogens.^{51–53}

In general, the outer phospholipid membrane of bacterial cells contains mixtures of polar phospholipids such as PE and PG.^{54–56} Therefore, traditionally these bacterial phospholipid membranes have been modelled in synthetic systems using a mixture of PE : PG in a 3 : 1 ratio.^{55,57} However, as detailed in Table 3, this is not representative of many naturally derived bacterial membranes. For example, although Gram-negative *E. coli* has a bacterial phospholipid composition that is very similar to these conventional model systems (PE : PG : CL 75 : 20 : 5),⁵⁷ this is not the case for Gram-positive methicillin-sensitive *S. aureus* U-71 (PG : L-PG : CL 80 : 12 : 5).⁵⁸ Furthermore, the composition of the phospholipid membrane has also been found to be dependent on growth phase^{59,60} and life-cycle,^{61,62} as highlighted with methicillin sensitive *S. aureus* 209P. In log phase growth the phospholipid composition of this



Table 3 Summary of % bacterial phospholipid membrane compositions. Where '—' is shown, the presence of this phospholipid was not confirmed or was shown to be absent within experimental limitations. Where the phospholipid composition does not equal 100%, the remaining phospholipids either could not be identified, or the membrane is also comprised of some less prevalent phospholipids which have been omitted from this summary table. These less common phospholipids include: PA, PC, PS, L-PE, L-CL. For full details, including those relating to alkyl chain composition, culture conditions and phospholipid source, please see Table S1^a

Bacterial strain	PG	L-PG	DAG	CL	PE	Growth phase	Analysis method
<i>E. faecium</i> (Gram +ve)							
R446 (ref. 66)	15	16	23	47	—	Stationary	MS
S447 (ref. 66)	34	14	13	29	—	Stationary	MS
<i>S. aureus</i> (Gram +ve)							
USA300 (ref. 67)	60	30	4	2	—	Log	MS
USA300 (ref. 67)	62	20	3	4	—	Stationary	MS
DSM 20233 (ref. 68)	50	20	—	1	—	Log	TLC
<i>fakA</i> mutant ⁶⁷	70	25	3	1	—	Log	MS
<i>fakA</i> mutant ⁶⁷	60	22	5	6	—	Stationary	MS
CB1118 (ref. 69)	84	12	—	7	—	Unknown	TLC
CB2205 (ref. 69)	84	25	—	7	—	Unknown	TLC
209P ⁷⁰	79	14	—	4	—	Log	TLC
209P ⁷⁰	66	10	—	5	—	Stationary	TLC
U-71 (ref. 58)	80	12	—	5	—	Unknown	TLC
<i>K. pneumonia</i> (Gram –ve)							
Smooth mutant ⁷¹	5	—	—	6.5	82	Unknown	TLC
005 (ref. 72)	35	—	—	—	59	Unknown	MS
<i>A. baumannii</i> (Gram –ve)							
HO1–N ⁷³	10	—	—	7	73	Unknown	GC
<i>P. aeruginosa</i> (Gram –ve)							
PAO1 (ref. 74)	27	—	—	—	69	Stationary	MS
B-219 (ref. 75)	41	—	—	—	65	Unknown	MS
<i>Enterobacter cloacae</i> (<i>E. cloacae</i>) (Gram –ve)							
S _{w1} (ref. 76)	23	—	—	3.5	73	Stationary	TLC
S _{w1} (ref. 76)	6	—	—	8	77	Log	TLC
012 (ref. 72)	35	—	—	—	65	Unknown	MS
008 (ref. 72)	42	—	—	—	50	Unknown	MS
AZT-R ⁷⁶	17	—	—	2	80	Log	TLC
AZT-R ⁷⁶	5	—	—	9	76	Stationary	TLC
AMA-R ⁷⁶	17	—	—	3	79	Log	TLC
AMA-R ⁷⁶	5	—	—	6	82	Stationary	TLC
<i>B. subtilis</i> (Gram +ve)							
Y1a (ref. 77)	70	3	—	4	22	Log	MS
Y1a (ref. 77)	75	2	—	7	17	Stationary	MS
DSM 3257 (ref. 77)	65	2	—	4	35	Log	MS
DSM 3257 (ref. 77)	30	2	—	10	70	Stationary	MS
<i>E. coli</i> (Gram –ve)							
B ⁷⁸	20	—	—	5	75	Log	TLC

^a MS = mass spectrometry. TLC = thin layer chromatography, GC = gas chromatography.

bacteria was found to be: PG : L-PG : CL 79 : 14 : 4 however, in stationary phase the phospholipid membrane composition alters to PG : L-PG : CL 66 : 10 : 14.⁶³ Additionally, it is well known that phospholipid membrane composition is dependent on bacterial culture conditions. For example, *P. aeruginosa* grown in synthetic cystic fibrosis media (SCFM) showed lower levels of PC compared to *P. aeruginosa* grown in Muller–Hilton broth (MHB).⁶⁴ To more accurately simulate the natural biological environment, the phospholipid composition of the

bacterial were also studied in SCFM with added DOPC (SCFM-PC).⁶⁵ As with SCFM only, there was a general increase in comparative quantities of those lipids present within *P. aeruginosa* grown in SCFM-PC, compared to that grown in MHB. This was most notable for PC and PG phospholipids. Interestingly, the minimum inhibitory concentration (MIC) values obtained for a variety of well-known antibiotics (carbenicillin, gentamicin, ciprofloxacin, colistin) against *P. aeruginosa* grown in these different media was also found to alter. With the



Table 4 Summary of cancer cell phospholipid membrane composition. Upwards arrow indicates an upregulation of specific phospholipids, downwards arrow indicates a downregulation of specific phospholipids. Where there are both upwards and downwards arrows present, this reflects the fact there will be multiple forms of a particular phospholipid present in a cell, due to different alkyl chain lengths and their degree of saturation. Some of these may be upregulated in a cancer cell, whereas others may be downregulated. Where '—' is shown, a change in phospholipid content was either not observed or not confirmed within experimental limitations. Tissue refers to human tissue obtained from clinical samples, unless otherwise stated. The cell membranes listed here may also contain some less prevalent phospholipids. These data, alongside alkyl chain composition and, the results of studies that restrict analysis to a limited number of phospholipids, are listed in Table S2. These less common phospholipids include: L-PA, L-PC, and L-PI, L-SM. Phospholipid composition was estimated through mass spectrometry (MS)

Sample type	PC	PE	PI	PG	PS	SM	PA	Control
Lung								
Tissue ⁹²	↑	↑	↑	—	↑	↓	—	Matched distant lung tissue
Tissue ⁹²	↓	↓	↓	—	↓	—	—	Matched distant lung tissue
Tissue ⁹³	↑	↑	—	—	—	—	—	Distal non-cancerous tissue
Tissue ⁹⁴	↑	↓	↓	—	—	↓	↑	Adjacent normal tissue
Tissue ⁹⁴	↓	—	—	—	—	—	—	Adjacent normal tissue
Tissue ⁹⁵	↑	—	—	—	—	↑	—	Adjacent normal lung tissue
Tissue ⁹⁶	↑	—	—	—	—	↓	—	Adjacent normal lung tissue
Tissue ⁹⁶	↓	—	—	—	—	—	—	Normal lung tissue
Breast								
Cell lines ⁹⁷	↑	↑	↑	—	—	↑	—	MCF10A cell line
Cell lines ⁹⁷	↓	↓	↓	—	—	↓	—	MCF10A cell line
Cell lines ⁹⁷	↑	↑	↑	—	—	↓	—	MCF10A cell line
Cell lines ⁹⁷	↓	—	↑	—	—	↑	—	MCF10A cell line
Cell lines ⁹⁸	↑	↑	↑	↓	↑	—	—	MCF10A cell line
Cell lines ⁹⁸	↑	↓	↓	—	—	—	—	MCF10A cell line
Cell lines ⁹⁸	↑	↑	↑	↑	↑	—	—	MCF10A cell line
Cell lines ⁹⁸	↑	↑	↑	↑	↓	—	—	MCF10A cell line
Tissue ⁹⁴	↓	↓	↓	—	—	↓	↑	Adjacent normal tissue
Tissue ⁹⁴	—	—	—	—	—	—	↓	Adjacent normal tissue
Tissue ⁹⁹	↑	↑	↑	—	—	↑	—	Adjacent normal tissue
Tissue ¹⁰⁰	↑	—	—	—	—	↑	—	Adjacent normal breast tissue
Tissue ¹⁰¹	↑	↑	↑	—	—	↓	—	Normal breast tissue
Prostate								
Cell lines ¹⁰²	↑	↑	—	—	—	↑	—	PNT1a cell line
Cell lines ¹⁰²	↓	↓	—	—	—	↓	—	PNT1a cell line
Tissue ¹⁰³	↑	↑	↑	—	—	↑	—	Tissue from healthy males
Tissue ¹⁰³	↓	—	↓	—	—	—	—	Tissue from healthy males
Colorectal								
Tissue ¹⁰⁴	—	—	—	↑	↑	—	↑	Adjacent normal mucosa
Tissue ¹⁰⁴	—	—	—	—	↓	—	—	Adjacent normal mucosa
Tissue ⁹⁴	↑	↓	↓	—	—	↓	↑	Adjacent normal tissue
Tissue ⁹⁴	↓	—	—	—	—	—	↓	Adjacent normal tissue
Tissue ¹⁰⁵	↑	↑	↑	—	↓	—	—	Adjacent normal mucosa
Tissue ¹⁰⁶	↑	↑	—	—	—	—	—	Adjacent normal mucosa
Tissue ¹⁰⁷	↑	↑	—	↑	↑	↑	—	Tumour adjacent tissue
Colorectal liver metastasis								
Tissue ¹⁰⁸	↑	↑	↓	—	↑	↑	—	Normal liver parenchyma
Tissue ¹⁰⁸	↓	↓	—	—	↓	—	—	Normal liver parenchyma



Table 4 (Contd.)

Sample type	PC	PE	PI	PG	PS	SM	PA	Control
Ovarian Tissue ¹⁰⁹	↑	—	↑	—	—	—	—	Adjacent normal tissue
Urothelial cancer of the bladder Tissue ¹¹⁰	↑	↑	↑	—	↑	—	—	Benign adjacent tissue
Gastric Tissue ⁹⁴	↑ ↓	↓	↓	—	—	↓	↑ ↓	Adjacent normal tissue
Oesophageal Tissue ⁹⁴	↑ ↓	↓	↓	—	—	↓	↑ ↓	Adjacent normal tissue
Tissue ¹¹¹	—	↑ ↓	↑	↑	↑ ↓	—	↑ ↓	Matched healthy oesophageal epithelium
Thyroid Tissue ⁹⁴	↑	↓	↓	—	—	↓	↑ ↓	Adjacent normal tissue
Hepatocellular Tissue ¹¹²	↑ ↓	↓	—	—	—	↓	—	Benign tissue

bacteria grown in MHB showing higher MIC values compared to SCFM.⁶⁴

For these reasons, the culture conditions used have been detailed in the ESI (Table S1†).

As exemplified in Table 3, the phospholipid composition of AMR bacteria differs significantly from those membranes studied from analogous non-resistant bacterial strains. For example, the clinical pair of daptomycin susceptible (S447) and daptomycin resistant (R446) strains of *Enterococcus faecium*⁶⁶ have a phospholipid composition PG : L-PG : CL : DAG 34 : 14 : 29 : 13 and PG : L-PG : CL : DAG 15 : 16 : 47 : 23 respectively.⁶⁶ This was interesting, as there are a number of unique bacterial lipids that are already associated with antimicrobial resistance including lipid A and teichoic acids.⁷⁹ Therefore, when considering the design and delivery of novel therapeutics to treat AMR infections where interaction with, or permeation through the cell membrane is critical, the differences in phospholipid membrane composition should also be taken into consideration.

Phospholipid composition of cancer cell membranes

Although cancer initiation normally has a genetic trigger, it has been shown that changes in membrane biophysical properties occur when non-malignant cells undergo malignant transformation.⁸⁰ Quantitative changes in all major classes of phospholipids caused by alterations in lipid regulation pathways,

have been identified in many types of cancer cell.⁸¹ For example, upregulation of PA leads to changes in tumour metabolism, such as the activation of kinases involved in intracellular stress signalling pathways,⁸² while elevated levels of PC result in modulation of enzymes involved in metabolic pathways causing higher proliferation rates.⁸¹ PI is important for a number of signalling pathways involved in cellular processes such as DNA damage, cell differentiation, proliferation, survival and trafficking, with PI5P known to modulate acetylation of p53 and activity of histone deacetylases and acetylases.⁸³

PS in the outer leaflet of the cell membrane is an early marker of apoptosis and has also been shown to play a pivotal role in non-apoptotic cell death as changes in its regulation affect necrosis.⁸⁴ Moreover, increased levels of PS are responsible for the weakening of the immune system in response to cancer.⁸¹ Furthermore, elevated levels of lyso-PA (Table 2) are considered a potential clinical biomarker in ovarian, colorectal⁸⁵ and pancreatic cancer^{86,87} and, are a potential therapeutic target for novel anti-cancer treatments.⁸⁸ PE is present on both the inner and outer leaflet of the plasma membrane and under normal physiological conditions it is more concentrated in the cytosolic region (inner leaflet). However, in cancer cells, this distribution is reversed with PE being more concentrated in the outer leaflet of the plasma membrane.⁸¹

In addition to those phospholipids detailed within the scope of this review, the levels of plasmalogens (a subclass of cell membrane glycerophospholipids)⁸⁹ have also been linked to cancer, as effectively reviewed by Messias and co-workers.⁹⁰ This



review summarises the regulation of plasmalogens in patients suffering from liver, colon, oesophageal, colorectal and pancreatic cancer. Therefore these data have not been reproduced herein, although we do urge the readers of this review to consider this class of lipids within the study of phospholipid cancer cell membranes, the importance of which has been further highlighted by the work of Fernandes and co-workers.⁹¹

Table 4 summarises the changes in phospholipid composition in cancer *versus* control samples as defined within the table. We note that there are a number of distinct sample types, exemplified by cancer cell lines and biological samples from cancer patients including tissue, plasma and urine. For this review we have focussed on human cancer cell lines and tissues from patients and have omitted other biological sample types such as urine and plasma, which are not representative of cells. We have also only included those data sets that provide a comparison between the cancer sample and a control sample. Two key examples of this are the sampling of adjacent normal tissue when tumour tissue is analysed from a cancer patient, and the use of a non-cancerous cell line (*e.g.* MCF10A for breast cancer) when a cancer cell line is being studied. This is important as it relates to the question of the differences between the normal *versus* cancer cell, which is then translated into the identification of candidate cancer specific biomarkers. Whilst quantitative numerical data on phospholipid content is provided, there is no standardised format in which these data have been reported. It is often summarised in tables that show whether a specific phospholipid is upregulated or downregulated in the cancer *versus* control sample, therefore this is the approach we have taken when summarising these data in Tables 4 and S2.† Within Table 4, an upwards arrow represents upregulation of a specific phospholipid type and a downwards arrow represents downregulation of this phospholipid in the cancer *versus* control sample. Where there are both upwards and downwards arrows present, this reflects the fact there will be multiple forms of a particular phospholipid present in a cell, due to different alkyl chain lengths and their degree of saturation. Some of these may be upregulated in a cancer cell, whereas others may be downregulated.

From the data summarised in Table 4, we observe a general trend in which more phospholipids are upregulated in the cancer *versus* the control sample, than downregulated. PC is generally upregulated in both breast cancer cell lines and tissue while the regulation of the remaining phospholipids present appears to be sample specific. A key limitation is the number of reports available for a particular cancer type, which for some such as bladder cancer, is limited to just one. Finally, a key factor in cancer treatment failure is drug resistance. Due to data limitations, it is currently not possible to comment on the differences between the phospholipid content of drug sensitive *versus* resistant cancer cells/samples.

Conclusions

An increased understanding of cell membrane phospholipid composition in cancer and bacterial cells can provide opportunities to develop novel treatment strategies for cancer and

AMR, and thereby begin to countermeasure shortfalls of current therapies. It is the intention that this review of current knowledge into the membrane composition of cancer and AMR cells and, cancerous tissue from cancer patients will aid those wishing to develop novel membrane transport technologies, drug delivery technologies, drug adjuvant technologies, therapeutics, or repurpose approved therapeutics against these diseases. While it is clear that a far greater library of such data would aid current research in these areas, it is also apparent that phospholipid composition studies in the microbiology and cancer fields are undertaken on a different basis. Specifically, we believe that the inclusion of percentage phospholipid composition data, as well as studies into the differences between the phospholipid content of drug sensitive *versus* resistant cancer cells/samples will greatly enhance the applicability of these data.

Data availability

The datasets supporting this article have been uploaded as part of the ESI† and article references.

Author contributions

Kira L. F. Hilton: investigation; validation; writing – original draft. Chandni Manwani: investigation; validation; writing – original draft. Jessica E. Boles: investigation; writing – original draft. Lisa J. White: supervision; writing – original draft. Sena Ozturk: writing – original draft. Michelle D. Garrett: funding acquisition; project administration; supervision; writing – review & editing. Jennifer R. Hiscock: conceptualization; funding acquisition; project administration; supervision; writing – original draft, review & editing.

Conflicts of interest

There are no conflicts to declare.

Acknowledgements

KH would like to thank the University of Kent for funding. CM would like to thank the Jane Irons Scholarship fund for the funding of her PhD studentship. JH and MG would like to thank Prof. Dan Mulvihill and Dr John Stolz for their advice during the drafting of this review. JB would like to thank Public Health England and the University of Kent for PhD studentship funding. MDG would like to thank the University of Kent, the Jane Irons Scholarship fund and EB Hutchinson Charitable Trust for funding. JH and LW would like to thank the UKRI for JH's Future Leaders Fellowship (MR/T020415/1).

Notes and references

- 1 H. Sung, J. Ferlay, R. L. Siegel, M. Laversanne, I. Soerjomataram, A. Jemal, F. Bray and C. A. Cancer, *J. Clin.*, 2021, **71**, 209–249.



- 2 S. Davies, J. Farrar, J. Rex, L. White, R. Murry and J. O'Neill, *Antimicrobial Resistance: Tackling a crisis for the health and wealth of nations*, 2014.
- 3 R. A. Weinberg and D. Hanahan, *Cell*, 2000, **100**, 57–70.
- 4 P. L. Bedard, D. M. Hyman, M. S. Davids and L. L. Siu, *Lancet*, 2020, **395**, 1078–1088.
- 5 C. S. Cleeland, J. D. Allen, S. A. Roberts, J. M. Brell, S. A. Giralt, A. Y. Khakoo, R. A. Kirch, V. E. Kwitkowski, Z. Liao and J. Skillings, *Nat. Rev. Clin. Oncol.*, 2012, **9**, 471.
- 6 J. B. Stone and L. M. DeAngelis, *Nat. Rev. Clin. Oncol.*, 2016, **13**, 92.
- 7 J. Herrmann, *Nat. Rev. Cardiol.*, 2020, **17**, 503–522.
- 8 C. Holohan, S. Van Schaeybroeck, D. B. Longley and P. G. Johnston, *Nat. Rev. Cancer*, 2013, **13**, 714–726.
- 9 E. D. Brown and G. D. Wright, *Nature*, 2016, **529**, 336–343.
- 10 L. L. Silver, *Clin. Microbiol. Rev.*, 2011, **24**, 71–109.
- 11 J. A. DiMasi, H. G. Grabowski and R. W. Hansen, *J. Health Econ.*, 2016, **47**, 20–33.
- 12 M. J. Renwick, D. M. Brogan and E. Mossialos, *J. Antibiot.*, 2016, **69**, 73–88.
- 13 H. Sunshine and M. L. Iruela-Arispe, *Curr. Opin. Lipidol.*, 2017, **28**, 408–413.
- 14 M. T. Nakamura, B. E. Yudell and J. J. Loor, *Prog. Lipid Res.*, 2014, **53**, 124–144.
- 15 D. Casares, P. V. Escribá and C. A. Rosselló, *Int. J. Mol. Sci.*, 2019, **9**, 2167.
- 16 M. Alagumuthu, D. Dahiya and P. Singh Nigam, *AIMS Mol. Sci.*, 2019, **6**, 1–19.
- 17 T. Harayama and H. Riezman, *Nat. Rev. Mol. Cell. Biol.*, 2018, **19**, 281–296.
- 18 G. M. Cooper, *The Cell: A molecular Approach*, Sinauer Associates, Sunderland (MA), 2nd edn, 2000.
- 19 J. Gruenberg and M. J. Clague, *Curr. Opin. Cell Biol.*, 1992, **4**, 593–599.
- 20 C. Sohlenkamp and O. Geiger, *FEMS Microbiol. Rev.*, 2016, **40**, 133–159.
- 21 D. A. Los and N. Murata, *Biochim. Biophys. Acta, Biomembr.*, 2004, **1666**, 142–157.
- 22 B. Alberts, A. Johnson, J. Lewis, M. Raff, K. Roberts and P. Walter, *Mol. Biol. Cell. Garl. Sci.*, 2008, 617–1115.
- 23 B. Chertok, M. J. Webber, M. D. Succi and R. Langer, *Mol. Pharm.*, 2013, **10**, 3531–3543.
- 24 G. Tiwari, R. Tiwari, B. Sriwastawa, L. Bhati, S. Pandey, P. Pandey and S. K. Bannerjee, *Int. J. Pharm. Investig.*, 2012, **2**, 2–11.
- 25 T. M. Allen and P. R. Cullis, *Science*, 2004, **303**, 1818–1822.
- 26 A. York, *Nat. Rev. Microbiol.*, 2020, **18**, 63.
- 27 C. P. J. Vendrik, J. J. Bergers, W. H. De Jong and P. A. Steerenberg, *Cancer Chemother. Pharmacol.*, 1992, **29**, 413–429.
- 28 Y. Ma, K. Gao, H. Yu, W. Liu, Y. Qin, R. Xing, S. Liu and P. Li, *Carbohydr. Polym.*, 2021, **261**, 117821.
- 29 H. Cheng, R.-R. Zheng, G.-L. Fan, J.-H. Fan, L.-P. Zhao, X.-Y. Jiang, B. Yang, X.-Y. Yu, S.-Y. Li and X.-Z. Zhang, *Biomaterials*, 2019, **188**, 1–11.
- 30 M. Rucevic, D. Hixson and D. Josic, *Electrophoresis*, 2011, **32**, 1549–1564.
- 31 D. B. Goldstein, *Annu. Rev. Pharmacol. Toxicol.*, 1984, **24**, 43–64.
- 32 K. Hu, Y. Jiang, Y. Xie, H. Liu, R. Liu, Z. Zhao, R. Lai and L. Yang, *J. Phys. Chem. B*, 2015, **119**, 8553–8560.
- 33 S. Troeira Henriques, Y.-H. Huang, S. Chaousis, C. K. Wang and D. J. Craik, *ChemBioChem*, 2014, **15**, 1956–1965.
- 34 C. Chidley, S. A. Trauger, K. Birsoy and E. K. O'Shea, *Elife*, 2016, **5**, e14601.
- 35 P. A. Gale, *Chem*, 2020, **6**, 2873–2875.
- 36 E. N. W. Howe and P. A. Gale, *J. Am. Chem. Soc.*, 2019, **141**, 10654–10660.
- 37 M. Fares, X. Wu, D. Ramesh, W. Lewis, P. A. Keller, E. N. W. Howe, R. Pérez-Tomás and P. A. Gale, *Angew. Chemie*, 2020, **132**, 17767–17774.
- 38 V. E. Zwicker, B. L. Oliveira, J. H. Yeo, S. T. Fraser, G. J. L. Bernardes, E. J. New and K. A. Jolliffe, *Angew. Chemie*, 2019, **131**, 3119–3123.
- 39 M. Magana, M. Pushpanathan, A. L. Santos, L. Leanse, M. Fernandez, A. Ioannidis, M. A. Giulianotti, Y. Apidianakis, S. Bradfute, A. L. Ferguson, A. Cherkasov, M. N. Seleem, C. Pinilla, C. de la Fuente-Nunez, T. Lazaridis, T. Dai, R. A. Houghten, R. E. W. Hancock and G. P. Tegos, *Lancet Infect. Dis.*, 2020, **20**, e216–e230.
- 40 L. J. White, J. E. Boles, N. Allen, L. S. Alesbrook, M. J. Sutton, C. K. Hind, K. L. F. Hilton, L. R. Blackholly, R. J. Ellaby, G. T. Williams, D. P. Mulvihill and J. R. Hiscock, *J. Mater. Chem. B*, 2020, **8**, 4694–4700.
- 41 N. O. Dora, E. Blackburn, J. E. Boles, G. T. Williams, L. J. White, S. E. G. Turner, J. D. Hothersall, T. Askwith, J. A. Doolan, D. P. Mulvihill, M. D. Garrett and J. R. Hiscock, *RSC Adv.*, 2021, **11**, 14213–14217.
- 42 S. N. Tyuleva, N. Allen, L. J. White, A. Pépés, H. J. Shepherd, P. J. Saines, R. J. Ellaby, D. P. Mulvihill and J. R. Hiscock, *Chem. Commun.*, 2018, **55**, 95–98.
- 43 G. Townshend, G. S. Thompson, L. J. White, J. R. Hiscock and J. L. Ortega-Roldan, *Chem. Commun.*, 2020, **56**, 4015–4018.
- 44 J. E. Boles, R. J. Ellaby, H. J. Shepherd and J. R. Hiscock, *RSC Adv.*, 2021, **11**, 9550–9556.
- 45 R. E. Nelson, K. M. Hatfield, H. Wolford, M. H. Samore, R. D. Scott II, S. C. Reddy, B. Olubajo, P. Paul, J. A. Jernigan and J. Baggs, *Clin. Infect. Dis.*, 2021, **72**, S17–S26.
- 46 S. L. Solomon and K. B. Oliver, *Am. Fam. Physician*, 2014, **89**, 938.
- 47 J. A. Jernigan, K. M. Hatfield, H. Wolford, R. E. Nelson, B. Olubajo, S. C. Reddy, N. McCarthy, P. Paul, L. C. McDonald, A. Kallen, A. Fiore, M. Craig and J. Baggs, *N. Engl. J. Med.*, 2020, **382**, 1309–1319.
- 48 M. Mendelson and M. P. Matsoso, *SAMJ South African Med. J.*, 2015, **105**, 325.
- 49 E. Tacconelli, N. Magrini, G. Kahlmeter and N. Singh, *World Heal. Organ.*, 2017, **27**, 318–327.
- 50 M. S. Mulani, E. E. Kamble, S. N. Kumkar, M. S. Tawre and K. R. Pardesi, *Front. Microbiol.*, 2019, **10**, 539.
- 51 S. Santajit and N. Indrawattana, *Biomed Res. Int.*, 2016, **2016**, 2475067.



- 52 L. B. Rice, *Infect. Control Hosp. Epidemiol.*, 2010, **31**, S7–S10.
- 53 S. A. Beatson and M. J. Walker, *Science*, 2014, **345**, 1454–1455.
- 54 W. Dowhan, *Annu. Rev. Biochem.*, 1997, **66**, 199–232.
- 55 H. Goldfine, *J. Lipid Res.*, 1984, **25**, 1501–1507.
- 56 R. M. Epand and R. F. Epand, *Biochim. Biophys. Acta, Biomembr.*, 2009, **1788**, 289–294.
- 57 K. Murzyn, T. Róg and M. Pasenkiewicz-Gierula, *Biophys. J.*, 2005, **88**, 1091–1103.
- 58 P. H. Ray and D. C. White, *J. Bacteriol.*, 1972, **109**, 668–677.
- 59 C. Le Sénéchal, M. Crouzet, P. Costaglioli, C. Barthe, C. Buré and S. Vilain, *Lipids*, 2019, **54**, 519–529.
- 60 J. Gidden, J. Denson, R. Liyanage, D. M. Ivey and J. O. Lay, *Int. J. Mass Spectrom.*, 2009, **283**, 178–184.
- 61 S. Furse, H. Wienk, R. Boelens, A. I. P. M. de Kroon and J. A. Killian, *FEBS Lett.*, 2015, **589**, 2726–2730.
- 62 M. E. Pedrido, P. de Oña, W. Ramirez, C. Leñini, A. Goñi and R. Grau, *Mol. Microbiol.*, 2013, **87**, 348–367.
- 63 A. Okabe, Y. Hirai, H. Hayashi and Y. Kanemasa, *Biochim. Biophys. Acta (BBA)-Lipids Lipid Metab.*, 1980, **617**, 28–35.
- 64 E. Deschamps, A. Schaumann, I. Schmitz-Afonso, C. Afonso, E. Dé, C. Loutelier-Bourhis and S. Alexandre, *Biochim. Biophys. Acta, Biomembr.*, 2021, **1863**, 183482.
- 65 M. S. Son, W. J. Matthews, Y. Kang, D. T. Nguyen and T. T. Hoang, *Infect. Immun.*, 2007, **75**, 5313–5324.
- 66 N. N. Mishra, A. S. Bayer, T. T. Tran, Y. Shamoo, E. Mileyskoykaya, W. Dowhan, Z. Guan and C. A. Arias, *PLoS One*, 2012, **7**, e43958.
- 67 Z. DeMars, V. K. Singh and J. L. Bose, *J. Bacteriol.*, 2020, **202**, e128-20.
- 68 H. U. Koch, R. Haas and W. Fischer, *Eur. J. Biochem.*, 1984, **138**, 357–363.
- 69 N. N. Mishra, S.-J. Yang, A. Sawa, A. Rubio, C. C. Nast, M. R. Yeaman and A. S. Bayer, *Antimicrob. Agents Chemother.*, 2009, **53**, 2312–2318.
- 70 K. Yasuhiro, Y. Tiekō and H. Hideo, *Biochim. Biophys. Acta, Lipids Lipid Metab.*, 1972, **280**, 444–450.
- 71 M. K. Wassef, *Lipids*, 1976, **11**, 364–369.
- 72 H. S. Aluyi, V. Boote, D. B. Drucker, J. M. Wilson and Y. H. Ling, *J. Appl. Bacteriol.*, 1992, **73**, 426–432.
- 73 C. C. Scott, S. R. Makula and W. R. Finnerty, *J. Bacteriol.*, 1976, **127**, 469–480.
- 74 T. Yosuke, I. Aya, S. Motoyuki, I. Sosaku, T. Naoki, N.-K. Toshiaki, U. Hiroo and N. Nobuhiko, *Biotechnol. Biochem.*, 2011, **75**, 605–607.
- 75 P. Bernat, P. Siewiera, A. Soboń and J. Długoński, *World J. Microbiol. Biotechnol.*, 2014, **30**, 2343–2350.
- 76 R. Aggeler, R. L. Then and R. Ghosh, *J. Gen. Microbiol.*, 1987, **133**, 3383–3392.
- 77 P. Bernat, K. Paraszkiwicz, P. Siewiera, M. Moryl, G. Plaza and J. Chojniak, *World J. Microbiol. Biotechnol.*, 2016, **32**, 1–13.
- 78 S. Hiraoka, H. Matsuzaki and I. Shibuya, *FEBS Lett.*, 1993, **336**, 221–224.
- 79 M. Abdi, S. Mirkalantari and N. Amirmozafari, *J. Pept. Sci.*, 2019, **25**, e3210.
- 80 P. V. Escribá, J. M. González-Ros, F. M. Goñi, P. K. Kinnunen, L. Vigh, L. Sánchez-Magraner, A. M. Fernández, X. Busquets, I. Horváth and G. Barceló-Coblijn, *J Cell Mol Med*, 2008, **12**, 829–875.
- 81 W. Szlasa, I. Zendran, A. Zalesińska, M. Tarek and J. Kulbacka, *J. Bioenerg. Biomembr.*, 2020, **52**, 321–342.
- 82 P. Putta, J. Rankenberg, R. A. Korver, R. van Wijk, T. Munnik, C. Testerink and E. E. Kooijman, *Biochim. Biophys. Acta*, 2016, **1858**, 2709–2716.
- 83 A. Poli, A. E. Zaurito, S. Abdul-Hamid, R. Fiume, I. Faenza and N. Divecha, *Int. J. Mol. Sci.*, 2019, **20**, 2080.
- 84 I. Shlomovitz, M. Speir and M. Gerlic, *Cell Commun Signal*, 2019, **17**, 139.
- 85 M. Meleh, B. Pozlep, A. Mlakar, H. Meden-Vrtovec and L. Zupancic-Kralj, *J Chromatogr B Anal. Technol Biomed Life Sci*, 2007, **858**, 287–291.
- 86 T. Yamada, K. Sato, M. Komachi, E. Malchinkhuu, M. Tobo, T. Kimura, A. Kuwabara, Y. Yanagita, T. Ikeya, Y. Tanahashi, T. Ogawa, S. Ohwada, Y. Morishita, H. Ohta, D. S. Im, K. Tamoto, H. Tomura and F. Okajima, *J. Biol. Chem.*, 2004, **279**, 6595–6605.
- 87 Y. Hou, J. Li, H. Xie, F. Sun, K. Yang, J. Wang, C. Ke, G. Lou and K. Li, *Metabolomics*, 2016, **12**, 1–12.
- 88 Y. Xu, *Cancers*, 2018, **10**, 227.
- 89 Z. A. Almsherqi, *Front. Cell Dev. Biol.*, 2021, **9**, 67317.
- 90 M. Cristina, F. Messias, G. C. Mecatti, D. G. Priolli, P. De and O. Carvalho, *Lipids Health Dis*, 2018, **17**, 1–12.
- 91 A. M. A. P. Fernandes, M. C. F. Messias, G. H. B. Duarte, G. K. D. de Santis, G. C. Mecatti, A. M. Porcari, M. Murgu, A. V. C. Simionato, T. Rocha, C. A. R. Martinez and P. O. Carvalho, *Metabolites*, 2020, **10**, 262.
- 92 E. Marien, M. Meister, T. Muley, S. Fieusws, S. Bordel, R. Derua, J. Spraggins, R. de Plas, J. Dehairs, J. Wouters, M. Bagadi, H. Dienemann, M. Thomas, P. A. Schnabel, R. M. Caprioli, E. Waelkens and J. V Swinnen, *Int. J. Cancer*, 2015, **137**, 1539–1548.
- 93 L. You, Y. Fan, X. Liu, S. Shao, L. Guo, H. A. A. Noreldeen, Z. Li, Y. Ouyang, E. Li, X. Pan, T. Liu, X. Tian, F. Ye, X. Li and G. Xu, *J. Proteome Res.*, 2020, **19**, 3750–3760.
- 94 S. Guo, Y. Wang, D. Zhou and Z. Li, *Sci. Rep.*, 2014, **4**, 5959.
- 95 G. K. Lee, H. S. Lee, Y. S. Park, J. H. Lee, S. C. Lee, J. H. Lee, S. J. Lee, S. R. Shanta, H. M. Park, H. R. Kim, I. H. Kim, Y. H. Kim, J. I. Zo, K. P. Kim and H. K. Kim, *Lung Cancer*, 2012, **76**, 197–203.
- 96 Y. Muranishi, T. Sato, S. Ito, J. Satoh, A. Yoshizawa, S. Tamari, Y. Ueda, Y. Yutaka, T. Menju, T. Nakamura and H. Date, *Sci. Reports*, 2019, **9**, 1–10.
- 97 M. L. Dória, C. Z. Cotrim, C. Simões, B. Macedo, P. Domingues, M. R. Domingues and L. A. Helguero, *J. Cell. Physiol.*, 2013, **228**, 457–468.
- 98 H. Y. Kim, K. M. Lee, S. H. Kim, Y. J. Kwon, Y. J. Chun and H. K. Choi, *Oncotarget*, 2016, **7**, 67111–67128.
- 99 M. Hilvo, C. Denkert, L. Lehtinen, B. Müller, S. Brockmüller, T. Seppänen-Laakso, J. Budczies, E. Bucher, L. Yetukuri, S. Castillo, E. Berg, H. Nygren, M. Sysi-Aho, J. L. Griffin, O. Fiehn, S. Loibl, C. Richter-



- Ehrenstein, C. Radke, T. Hyötyläinen, O. Kallioniemi, K. Iljin and M. Oresic, *Cancer Res.*, 2011, **71**, 3236–3245.
- 100 S. Kang, A. Lee, Y. S. Park, S. C. Lee, S. Y. Park, S. Y. Han, K. P. Kim, Y. H. Kim, C. W. Yoo and H. K. Kim, *Int J Gynecol Cancer*, 2011, **21**, 1566–1572.
- 101 E. Cifková, M. Holčapek, M. Lisa, D. Vrána, J. Gatěk and B. Melichar, *Anal. Bioanal. Chem.*, 2015, **407**, 991–1002.
- 102 A. Sorvina, C. A. Bader, C. Caporale, E. A. Carter, I. R. D. Johnson, E. J. Parkinson-Lawrence, P. V. Simpson, P. J. Wright, S. Stagni, P. A. Lay, M. Massi, D. A. Brooks and S. E. Plush, *Oncotarget*, 2018, **9**, 35541.
- 103 N. Morse, T. Jamaspishvili, D. Simon, P. G. Patel, K. Y. M. Ren, J. Wang, R. Oleschuk, M. Kaufmann, R. J. Gooding and D. M. Berman, *Lab. Investig.*, 2019, **99**, 1561–1571.
- 104 J. Alexander, L. Gildea, J. Balog, A. Speller, J. McKenzie, L. Muirhead, A. Scott, C. Kontovounisios, S. Rasheed, J. Teare, J. Hoare, K. Veselkov, R. Goldin, P. Tekkis, A. Darzi, J. Nicholson, J. Kinross and Z. Takats, *Surg Endosc*, 2017, **31**, 1361–1370.
- 105 T. E. Merchant, J. N. Kasimos, P. W. de Graaf, B. D. Minsky, L. W. Gierke and T. Glonek, *Int J Color. Dis*, 1991, **6**, 121–126.
- 106 D. A. Dueck, M. Chan, K. Tran, J. T. Wong, F. T. Jay, C. Littman, R. Stimpson and P. C. Choy, *Mol. Cell. Biochem.*, 1996, **162**, 97–103.
- 107 A. Pakiet, K. Sikora, J. Kobiela, O. Rostkowska, A. Mika and T. Sledzinski, *Lipids Health Dis*, 2021, **20**, 85.
- 108 S. Kiritani, K. Yoshimura, J. Arita, T. Kokudo, H. Hakoda, M. Tanimoto, T. Ishizawa, N. Akamatsu, J. Kaneko, S. Takeda and K. Hasegawa, *BMC Cancer*, 2021, **21**, 1–9.
- 109 S. Kang, A. Lee, Y. S. Park, S. C. Lee, S. Y. Park, S. Y. Han, K. P. Kim, Y. H. Kim, C. W. Yoo and H. K. Kim, *Int. J. Gynecol. Cancer*, 2011, **21**, 1566–1572.
- 110 D. W. B. Piyarathna, T. M. Rajendiran, V. Putluri, V. Vantaku, T. Soni, F. C. von Rundstedt, S. R. Donepudi, F. Jin, S. Maity, C. R. Ambati, J. Dong, D. Gödde, S. Roth, S. Störkel, S. Degener, G. Michailidis, S. P. Lerner, S. Pennathur, Y. Lotan, C. Coarfa, A. Sreekumar and N. Putluri, *Eur. Urol. Focus*, 2018, **4**, 907–915.
- 111 N. Abbassi-Ghadi, S. S. Antonowicz, J. S. McKenzie, S. Kumar, J. Huang, E. A. Jones, N. Strittmatter, G. Petts, H. Kudo, S. Court, J. M. Hoare, K. Veselkov, R. Goldin, Z. Takáts and G. B. Hanna, *Cancer Res.*, 2020, **80**, 2764–2774.
- 112 Z. Liu, Z. Zhang, H. Mei, J. Mao and X. Zhou, *Hepatol. Int.*, 2020, **14**, 544–555.

