



You have downloaded a document from
RE-BUŚ
repository of the University of Silesia in Katowice

Title: Impacts of vegetation and palaeohydrological changes on the n-alkane composition of a Holocene peat sequence from the Upper Vistula Valley (southern Poland)

Author: Sylwia Skreczko, Artur Szymczyk, Weronika Nadłonek

Citation style: Skreczko Sylwia, Szymczyk Artur, Nadłonek Weronika. (2021). Impacts of vegetation and palaeohydrological changes on the n-alkane composition of a Holocene peat sequence from the Upper Vistula Valley (southern Poland). "Journal of Soils and Sediments" (2021, no. 7, s. 2709-2718), DOI: 10.1007/s11368-021-02981-4



Uznanie autorstwa - Licencja ta pozwala na kopiowanie, zmienianie, rozprowadzanie, przedstawianie i wykonywanie utworu jedynie pod warunkiem oznaczenia autorstwa.



UNIWERSYTET ŚLĄSKI
W KATOWICACH



Biblioteka
Uniwersytetu Śląskiego



Ministerstwo Nauki
i Szkolnictwa Wyższego



Impacts of vegetation and palaeohydrological changes on the *n*-alkane composition of a Holocene peat sequence from the Upper Vistula Valley (southern Poland)

Sylwia Skreczko¹ · Artur Szymczyk¹ · Weronika Nadłonek²

Received: 12 January 2021 / Accepted: 16 May 2021 / Published online: 27 May 2021
© The Author(s) 2021

Abstract

Purpose The analysis of *n*-alkanes in palaeoenvironmental studies of peatlands is mainly limited to ombrogenous peatlands which are a rare feature in the environment. Using *n*-alkane and plant macrofossil analysis, we have tracked changes in the environment in the valley of a large Central European river. We tested the possibilities for applying such studies to low-moor bogs which are the most commonly occurring type of bog in the world.

Materials and methods Representative peat samples were taken from two profiles in a peatland located in the Vistula Valley (southern Poland), and they were analysed for the occurrence and distribution of biomarkers. The distribution of *n*-alkanes was determined using gas chromatography-mass spectrometry (GC–MS). The botanical composition of the samples was determined by analysis of plant macrofossil remains, and the degree of peat decomposition was also determined.

Results and discussion Samples of low-moor peat were characterised by a prevalence of medium- and long-chain *n*-alkane homologues, which is typical for higher plants. The variable values of the CPI, $CPI_{(25-31)}$, and the C_{23}/C_{25} ratio have provided information on the stages of formation of the Zapadź bog. The source of *n*-alkane differentiation is vegetation change related to palaeohydrological dynamics and palaeoenvironmental conditions within the peatland.

Conclusions We have shown that analysis of *n*-alkanes can be successfully used in low-moor bogs as a complement to palaeobotanical and palaeozoological methods. The bringing together of these types of research enables changes in the ecosystems of large river valleys to be tracked.

Keywords *N*-Alkanes · Low-moor peat · Environmental changes · Holocene · Poland

1 Introduction

Peat, biogenic sediment formed from partially decayed plant debris, accumulates in constantly wet, acidic, and suboxic to anoxic sedimentary environments. The different types of plant material that participate in the process of peat formation include leaves, rhizomes, roots, and woody parts of vascular plants as well as bryophytes (Rydin and Jeglum

2013). The composition of peat deposits provides climatic information about the local area and can serve as a useful tool in reconstructing palaeoclimate (Bingham et al. 2010).

Lipids from peat-forming plants can be used as proxies for past changes in bog vegetation because they can persist in a relatively unaltered state, unlike the bulk of the vegetation which is largely composed of readily degradable components such as carbohydrates (Pancost et al. 2002).

The distribution of *n*-alkanes in peat profiles is related to the different types of vegetation that formed the peat. The *n*-alkane content differs greatly between plant species and they are not species-specific molecules (Schellekens and Buurman 2011). Moreover, the amounts of *n*-alkanes delivered to the sediment by plants may be disproportionate to the quantities of plant biomass present in the peat (Andersson et al. 2011). The results of Ficken et al. (1998, 2000) and Pancost et al. (2002) showed that the leaves of some vascular plant species (e.g. of the Ericaceae family) contain higher

Responsible editor: Jan Schwarzbauer

✉ Artur Szymczyk
artur.szymczyk@us.edu.pl

¹ Faculty of Natural Sciences, Institute of Earth Sciences, University of Silesia, Będzińska 60, 41-200 Sosnowiec, Poland

² Polish Geological Institute - National Research Institute, Królowej Jadwigi 1, 41-200 Sosnowiec, Poland

concentrations of *n*-alkanes than *Sphagnum* and other moss species. Also, the leaves of deciduous trees are more abundant in *n*-alkanes than coniferous tree needles. Deciduous trees produce far more biomass than other plants, and their leaves are major contributors of *n*-alkanes to sedimentary organic matter of terrestrial origin.

Different groups of plants produce leaf wax *n*-alkanes with differing carbon chain lengths (Nichols et al. 2006). The leaf wax of vascular plants (grasses, sedges, trees, and shrubs) is dominated by long-chain *n*-alkanes with 29–31 carbon atoms per molecule (from *n*-C29 to *n*-C31), whilst *Sphagnum* leaf wax is dominated by *n*-alkanes with medium chain length (from *n*-C23 to *n*-C25) (Nott et al. 2000; Pancost et al. 2002; Nichols et al. 2006). A dominance of short-chain *n*-alkanes in the hydrocarbon fraction indicates that the sediment was deposited in an aquatic environment and that organic matter occurring there is an autochthonic component (Maliński and Witkowski 1988). The occurrence of *n*-alkanes with 23 carbon atoms in a chain (and to a lesser degree, with 25 carbon atoms in a chain) is not typical for terrestrial conditions (Eglinton and Hamilton 1967), but is commonly observed in different *Sphagnum* species (Nott et al. 2000; Baas et al. 2000; Pancost et al. 2002).

The diversity of *n*-alkanes may also be related to the variability of ecological conditions (e.g. changes in the water table). One consequence of environmental change is a variation in the species composition of plant communities. During dry periods with a lowered water table, *Sphagnum*, which does not have a vascular system, cannot obtain water, and this has a negative effect on its growth (Nichols et al. 2009). In such situations, vascular plants contribute more leaf wax to the peat deposit. Conversely, when the water level is high, the oxygenated layer near the surface of the peatland becomes thinner, making conditions difficult for vascular plants (Nichols et al. 2009). Changes of water table levels in the peat can be reflected by the quantity of C₂₃ and C₂₉ *n*-alkanes contained in *Sphagnum* and vascular plants.

The strong connection between the distribution of plant species and the wetness of the surface of an ombrotrophic mire (Charman 2002; Rydin and Jeglum 2013) leads to the suggestion that the variety of biomarkers originating from plants, when incorporated into peat, can be used to reconstruct past conditions.

The analysis of *n*-alkanes has been successfully used to reconstruct the changes in the vegetation and palaeohydrology of the peatlands in different climatic zones not only in Europe (e.g. Nichols et al. 2009; Andersson et al. 2011; Ronkainen et al. 2013; Gabov et al. 2017) but also across the world (Zhang et al. 2017). However, the vast majority of these studies concerned ombrotrophic bogs, which are considered the best subjects (e.g. Nichols et al. 2006; Bingham et al. 2010; Schellekens and Buurman 2011; Balascio et al. 2018) for this type of study. The specific conditions that are

required for them to form mean that the opportunities for using the analysis of *n*-alkanes are, in practice, limited to the relatively small areas on which they can form (usually watersheds and mountains).

There has been only sporadic use of *n*-alkane analysis to monitor environmental change in low-moor peatlands, the most prevalent peatlands in the world, and a permafrost area. An example of this type of study is a study of peatlands in the tundra zone (Bol'shezemelskaya Tundra, Russia) by Pastukhov et al. (2018). In response to this, our objective was to reconstruct the vegetation changes and changes in the water table levels in a peatland located in the valley of a large river. With the simultaneous application of plant macrofossil analysis, we also tried to estimate the opportunities for using *n*-alkane analysis to track vegetation and palaeohydrological change in inherently deficient ombrotrophic areas of peatland in which low-moor and transitional peatlands are dominant.

2 Methodology and materials

2.1 Study area

The peatland that was investigated, Zapadź, is located in the valley of the Upper Vistula River in southern Poland, near Góra village in the Miedźna commune (49° 59' 4.8" N, 19° 26' 14.2" E) (Fig. 1). It was formed in a palaeomeander hollow that occupies an area of about 19 ha and is surrounded on three sides by a high embankment. The peatland is a living low-moor bog mainly overgrown with rush vegetation (with the dominance of *Carex* spp.). The maximum thickness of sediments is 4 m. The eastern edge of the bog is located about 500 m from the strongly meandering river Vistula.

2.2 Sampling

For the purposes of this study, two peat cores were collected in 2016 from different parts of the peatland, the Z1 core (3.35 m) situated in the north-western part of the mire, and the Z2 core (1.50 m) in its south-eastern part (Fig. 1). The cores for sediment analysis were collected using an Instorf auger with a 5-cm diameter core sampler which was 50 cm in length. The samples for analysis were selected to reflect changes in the botanical composition of the core sediments. These changes were determined using plant macrofossil analysis.

2.3 Plant macrofossil analysis

An analysis was carried out of the species composition in 12 samples of the peat, each with a volume of 20 cm³ and

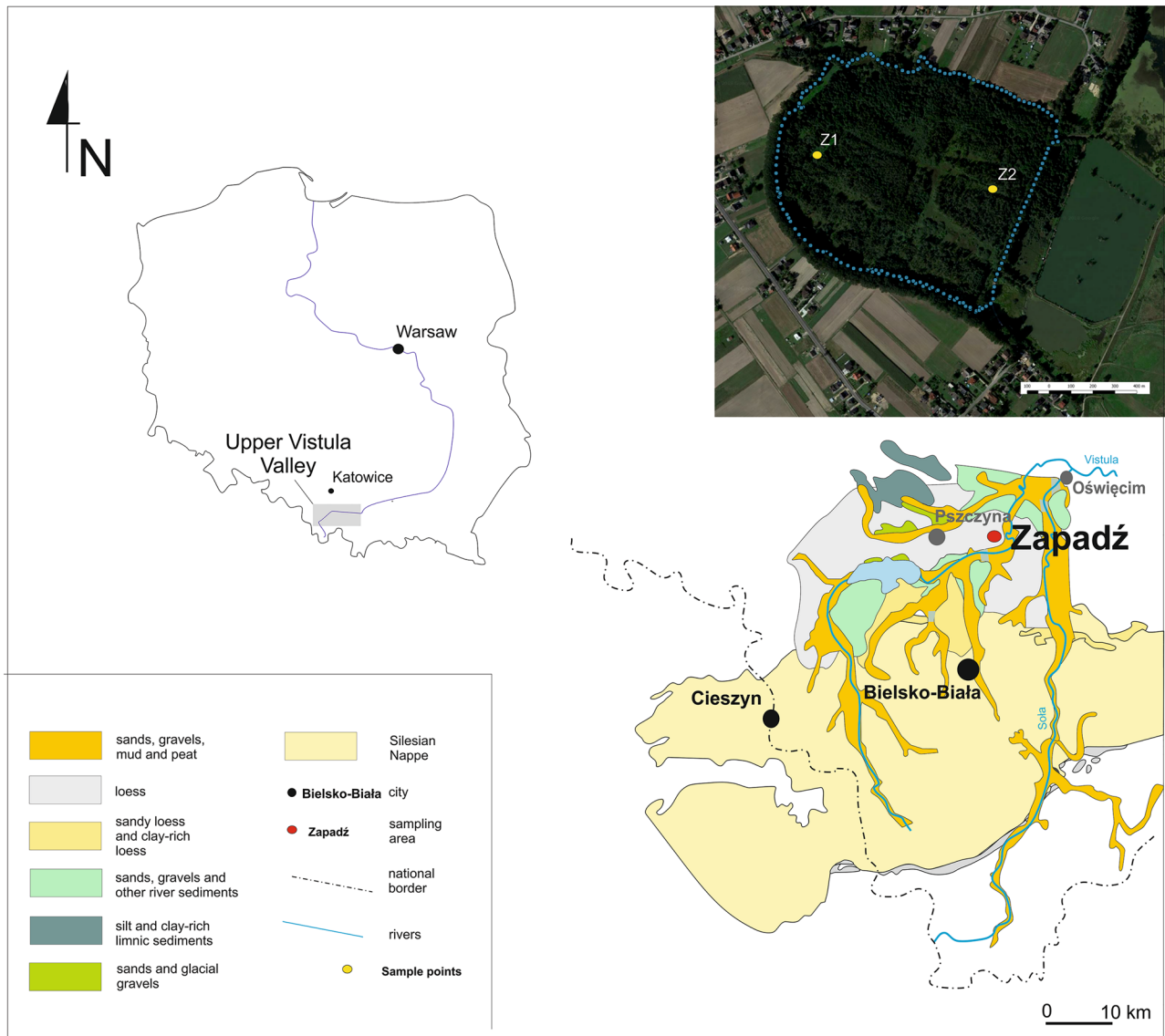


Fig. 1 The location of the study peatland showing the sites of the cores

mainly selected at 5-cm intervals along the core. Samples were taken from the depths at which there were changes in the types of peat in the cores. In order to separate the macrofossils, the peat was rinsed using a sieve with a mesh size of 0.2 mm. The plant macroremains were scored using a stereoscopic microscope. The degree of peat decomposition was defined according to the van Post scale (Rydlin and Jeglum 2013).

2.4 Gas chromatography-mass spectrometry

Eight samples from the Z1 profile and four samples from the Z2 profile were subjected to GC–MS analysis. Each sample had a dry weight of about 10 g. After drying in the laboratory, the samples were first crushed in an agate

mortar; then, organic matter was extracted using a dichloromethane and methanol mixture (5:1, vol:vol) in a Dionex ASE 350 solvent extractor. Extracts were separated into aliphatic, aromatic, and polar fractions by modified column chromatography according to Bastow et al. 2007. Silica-gel was first activated at 110 °C for 24 h and then put into Pasteur pipettes. The eluents used for collection of the fractions were *n*-pentane for aliphatic hydrocarbons, *n*-pentane and dichloromethane for the aromatic fraction (7:3 vol:vol), and dichloromethane and methanol for the polar fraction (1:1 vol:vol) (Rybicki et al. 2016). Fractions of selected peat samples were analysed using an Agilent Technologies 7890A gas chromatograph and Agilent 5975C Network mass spectrometer. The GC column outlet was connected directly to the ion source of the Triple-Axis

Detector (MSD) (Rybicki et al. 2016). The GC–MS interface temperature was 280 °C, while the ion source and quadrupole analyser were at 230 °C and 150 °C, respectively. Helium (6.0 Grade) was used as a carrier gas at a constant flow of 2.6 ml min⁻¹. Separation was on either of the fused silica capillary columns:

- J&W HP5-MS (60 m 0.32 mm i.d., 0.25-µm film thickness) coated with a chemically bonded phase (5% phenyl, 95% methylsiloxane). The GC oven temperature was programmed from 45° C (1 min) to 100 °C at 20 °C/min, then to 300 °C (held 60 min) at 3 °C/min. Solvent delay = 10 min.
- J&W DB35-MS (60 m 0.25 mm i.d., 0.25 µm film thickness) coated with a chemically bonded phase (35% phenyl, 65% methylsiloxane). The GC oven temperature was programmed from 50 °C (1 min) to 120 °C at 20 °C/min, then to 300 °C (held 60 min) at 3 °C/min. Solvent delay = 15 min.

Mass spectra were recorded from m/z 45–550 (0–40 min) and m/z 50–700 (> 40 min). The mass spectrometer was operated in the electron impact mode (ionisation energy 70 eV) (Rybicki et al. 2016).

The results were presented in terms of five geochemical proxies. Carbon Preference Index (CPI) ratios (Kotarba et al. 1994) for n -alkanes containing from 17 to 31 carbon atoms per molecule were calculated as:

CPI—the value of the Carbon Preference Index for the n -alkanes C₁₇–C₃₁ after Kotarba et al. (1994).

$$CPI = \frac{(C_{17} + C_{19} + \dots + C_{27} + C_{29}) + (C_{19} + C_{21} + \dots + C_{29} + C_{31})}{[2(C_{18} + C_{20} + \dots + C_{28} + C_{30})]} \quad (1)$$

CPI_{25–31} (Kotarba et al. 1994) was calculated in a similar way for n -alkanes containing 25–31 carbon atoms per molecule as

$$CPI_{(25-31)} = \frac{(C_{25} + C_{27} + C_{29}) + (C_{27} + C_{29} + C_{31})}{[2(C_{26} + C_{28} + C_{30})]} \quad (2)$$

We also calculated the Sch/LCh (short-chain/long-chain) quotient, which is the proportion of short-chain homologue n -alkanes with 17, 18, and 19 carbon atoms per molecule to long-chain n -alkanes with 27, 28, and 29 carbon atoms per molecule, as:

$$Sch/LCH = (nC_{17} + (nC_{18} + (nC_{19}))/((nC_{27} + (nC_{28} + (nC_{29}))) \quad (3)$$

Finally, we derived C₂₃/C₃₁ (n -alkanes with 23 carbon atoms per molecule as a proportion of n -alkanes with 31 carbon atoms per molecule; Pancost et al., 2002) and n -C_{max} (the maximum n -alkane content). (Rybicki et al., 2016)

3 Results

3.1 Plant macrofossils analysis

The results of the analysis of plant macrofossil remains are shown in Tables 1 and 2. The composition of the peat from Zapadź showed considerable variation (Figs. 2a and 3a). Three types of low-moor peat have been identified in the profiles: *Alnioni*, *Magnocaricioni*, and *Bryalo-Parvocaricioni*. The upper of the layers for the two profiles showed the greatest variety of plant macroremains mostly comprising *Carex* spp. with smaller quantities of *Phragmites australis* and brown mosses. *Betula* sect. *Albae*, *Eriophorum vaginatum*, and *Juncus* spp. were also identified in the upper of the layers. The main component of the middle part of the profiles was *Carex* spp. The base of the profile Z1 consisted of moss peat including *Sphagnum* sp. with *Carex* sp., *Eriophorum vaginatum*, and *Phragmites australis*. In case of the Z2 core, it was sedge peat with a small share of brown moss remains and *Phragmites australis*. The wood, seeds, and fruits of *Betula* sect. *Albae* were recognised almost throughout the whole profiles of Z1 and Z2.

3.2 Gas chromatography-mass spectrometry

The peat samples studied were dominated by medium-chain (n -C₂₃ and n -C₂₅) n -alkane homologues (typical for *Sphagnum*) and long-chain (n -C₂₇ and n -C₂₉) n -alkane homologues which are characteristic of higher plant waxes (Table 3, marked in orange; Figs. 2b, 3b). Moreover, elevated values of n -C₂₁ were observed in samples Z1/5 (73.9%) and Z1/7 (100%). The quantities and distributions of n -alkanes varied within and between the two peat cores. The percentage content of n -C₂₃ compounds ranged from 8.2% (Z1/7) to 100% (Z1/5 and Z2/1), that of n -C₂₅ compounds from 34.8% (Z2/4) to 100% (Z1/1), that of n -C₂₇ compounds from 63.3% (Z1/7) to 100% (Z1/2, Z1/3, Z1/4, Z1/6, Z1/8, Z2/2, Z2/3, Z2/4), and that of n -C₂₉ compounds from 24.1% (Z1/7) to 79.5% (Z1/2). In all of the samples, n -C₂₇ and n -C₂₅ n -alkanes were clearly present in significant quantities (Table 3).

In some samples, the occurrence of n -alkanes was not completely compatible with the occurrence of plant macrofossil remains. For example, the n -alkanes in Sample Z1/5 were dominated by n -C₂₃ and n -C₂₅ compounds which suggest *Sphagnum* spp. content, but the macrofossils were mainly from *Carex* spp. (a vascular plant) along with some *Phragmites australis* and a small fraction of brown mosses. Similarly, in the uppermost layer of core Z1 (Sample Z1/1), the high content of n -C₂₃ and n -C₂₅ n -alkanes (Table 3) indicates that the main component

Table 1 Species composition of the peat samples (Z1 core)

Depth (m)	Species composition of peat	Sample
0.0–0.05	<i>Carex</i> sp. 73% (mainly roots), <i>Phragmites australis</i> 11% (roots and rhizomes), wood and bark of <i>Betula</i> sp. 3%, other 13% (including seeds and fruits: <i>Betula</i> sect. Albae, <i>Bidens tripartita</i> , <i>Carex</i> sp., <i>Eleocharis palustris</i> , <i>Juncus</i> sp., <i>Menyanthes trifoliata</i> , <i>Ranunculus</i> sp.)	Z1/1
0.10–0.15	<i>Carex</i> sp. 75% (mainly roots), Brown mosses 8%, wood and bark 12% (including <i>Alnus glutinosa</i> and <i>Betula</i> sp.), <i>Eriophorum vaginatum</i> 2% (mainly leaves), other 6% (including <i>Phragmites australis</i> (roots and rhizomes), leaves of <i>Sphagnum</i> sp., and seeds and fruits: <i>Betula</i> sect. Albae, <i>Carex</i> sp., <i>Juncus</i> sp., <i>Polygonum hydropiper</i> , <i>Scirpus sylvaticus</i>)	
0.45–0.50	<i>Carex</i> sp. 71% (mainly roots), Brown mosses 18%, <i>Phragmites australis</i> 5% (roots and rhizomes), wood 2% (including <i>Alnus glutinosa</i> and <i>Betula</i> sp.), other 4% (including <i>Eriophorum</i> sp. (mainly leaves), leaves of <i>Sphagnum</i> sp. and seeds and fruits: <i>Betula</i> sect. Albae, <i>Ranunculus</i> sp.)	Z1/2
0.60–0.65	<i>Carex</i> sp. 75% (mainly roots), wood and bark 15% (including <i>Alnus glutinosa</i> , <i>Betula</i> sp., <i>Pinus sylvestris</i>), <i>Phragmites australis</i> 4% (roots and rhizomes), other 6% (including: Brown mosses, <i>Eriophorum</i> sp. (mainly leaves), leaves of <i>Sphagnum</i> sp., needles of <i>Pinus sylvestris</i> and seeds and fruits: <i>Betula</i> sect. Albae, <i>Carex</i> sp., <i>Scirpus sylvaticus</i>)	
0.70–0.75	<i>Carex</i> sp. 76% (mainly roots), wood and bark 17% <i>Alnus glutinosa</i> , <i>Betula</i> sp. (mainly <i>A. glutinosa</i>), <i>Phragmites australis</i> 2% (roots and rhizomes), other 5% (including: rhizomes of <i>Typha</i> sp. and <i>Equisetum</i> sp., leaves of <i>Sphagnum</i> sp, Brown mosses and seeds and fruits: <i>Betula</i> sect. Albae, <i>Carex</i> sp., <i>Epilobium</i> sp., <i>Juncus</i> sp.)	Z1/3
1.05–1.10	Wood and bark 48% <i>Alnus glutinosa</i> (mainly) and <i>Betula</i> sp., <i>Carex</i> sp. 37% (mainly roots), <i>Phragmites australis</i> 3% (roots and rhizomes), other 12% (including: rhizomes of <i>Typha</i> sp. and <i>Equisetum</i> sp. and seeds and fruits: <i>Urtica dioica</i> and <i>Carex</i> sp.)	Z1/4
1.35–1.40	<i>Carex</i> sp. 87% (mainly roots), <i>Phragmites australis</i> 5% (roots and rhizomes), Brown mosses 2%, wood 2% (including <i>Alnus glutinosa</i> and <i>Betula</i> sp.), other 4% (including seeds: <i>Lycopus europaeus</i> and sclerotia of <i>Cenococcum geophilum</i> and coals)	
1.55–1.60	<i>Carex</i> sp. 83% (mainly roots), <i>Phragmites australis</i> 8% (roots and rhizomes), and other 9% (including: Brown mosses, wood (<i>Alnus glutinosa</i> and <i>Betula</i> sp., seeds and fruits: <i>Betula</i> sect. Albae, <i>Carex</i> sp., <i>Ranunculus</i> sp. and sclerotia of <i>Cenococcum geophilum</i>)	Z1/5
1.90–1.95	<i>Carex</i> sp. 90% (mainly roots), <i>Phragmites australis</i> 5% (roots and rhizomes), other 5% (including: Brown mosses, <i>Eriophorum</i> sp. (mainly leaves), wood (mainly <i>Betula</i> sp.) and seeds and fruits: <i>Betula</i> sect. Albae and <i>Ranunculus</i> sp.)	
2.10–2.15	Brown mosses 48%, <i>Carex</i> sp. 39% (mainly roots), <i>Phragmites australis</i> 2% (roots and rhizomes), wood of <i>Betula</i> sp. 2%, other 9% (including fruits: <i>Betula</i> sect. Albae)	Z1/6
2.50–2.55	<i>Carex</i> sp. 80% (mainly roots), Brown mosses 2%, wood of <i>Betula</i> sp. 2%, other 16% (including: <i>Phragmites australis</i> (mainly roots and rhizomes), <i>Eriophorum vaginatum</i> (mainly leaves), leaves of <i>Sphagnum</i> sp. and seeds and fruits: <i>Betula</i> sect. Albae, <i>Carex</i> sp., <i>Epilobium</i> sp., <i>Juncus</i> sp., <i>Polygonum hydropiper</i> , <i>Rubus</i> sp.)	
2.70–2.75	<i>Carex</i> sp. 83% (mainly roots), Brown mosses 9%, <i>Phragmites australis</i> 2% (roots and rhizomes), wood of <i>Betula</i> sp. 2%, other 4% (including: <i>Eriophorum</i> sp. (mainly leaves) and fruits: <i>Betula</i> sect. Albae)	Z1/7
3.00–3.05	Brown mosses 52%, <i>Carex</i> sp. 40% (mainly roots), wood of <i>Betula</i> sp. 2%, and other 6% (including: <i>Phragmites australis</i> (mainly roots and rhizomes), <i>Eriophorum</i> sp. (mainly leaves), fruits: <i>Betula</i> sect. Albae,	
3.25–3.30	Brown mosses 67%, <i>Carex</i> sp. 24% (mainly roots), <i>Phragmites australis</i> 2% (mainly roots and rhizomes), and other 7% (including <i>Eriophorum</i> sp. (mainly leaves), wood (mainly <i>Betula</i> sp.), seeds and fruits: <i>Betula</i> sect. Albae, <i>Carex</i> sp., <i>Menyanthes trifoliata</i>)	Z1/8
3.30–3.35	Brown mosses 75%, <i>Carex</i> sp. 12% (mainly roots), <i>Phragmites australis</i> 2% (mainly roots and rhizomes), and other 6% (including: <i>Eriophorum</i> sp. (leaves mainly), wood (mainly <i>Betula</i> sp.), seeds and fruits: <i>Betula</i> sect. Albae, <i>Carex</i> sp., <i>Menyanthes trifoliata</i> , <i>Ranunculus</i> sp.)	

of the peat is *Sphagnum* spp., but the primary macrofossil species identified within this layer was *Carex* spp. Domination of long-chain *n*-alkane homologues was explicit and confirmed by values of SCh/LCh (3) ranging from 0 to 0.15 (Figs. 2c, 3c). Among long-chain homologues, there was a significant domination of *n*-alkanes with an odd number of carbon atoms in the chain, which was confirmed by values of CPI (1) and CPI_{25-31} (2) > 4 in all samples. CPI values significantly above 1.0, odd

preference, indicate low thermal maturity (Ruan et al., 2018). The highest values of CPI (> 10) were noted in samples Z1/3, Z1/8, and Z2/4, whereas high values of CPI_{25-31} were observed in samples Z1/3, Z1/6, Z1/8, Z2/2, and Z2/4 (Figs. 2c, 3c). In the Z1 profile, C_{23}/C_{31} was in the range 1.1–3.8, with the exception of sample Z1/8 (ratio equalling 33.9) (Table 3). The Z2 profile does not show such outliers instead with values of the ratio which range from 1.6 to 5.4 (Table 3).

Table 2 Species composition of the peat samples (Z2 core)

Depth (m)	Species composition of peat	Sample
0.0–0.05	<i>Carex</i> sp. 68% (mainly roots), <i>Phragmites australis</i> 14% (roots and rhizomes), wood and bark 4% (including <i>Betula</i> sp., <i>Salix</i> sp.), other 15% (including: leaves of <i>Sphagnum</i> sp., Brown mosses, seeds and fruits: <i>Betula</i> sect. Albae, <i>Carex</i> sp., <i>Eleocharis palustris</i> , <i>Juncus</i> sp.)	Z2/1
0.30–0.35	<i>Carex</i> sp. 72% (mainly roots), Brown mosses 12%, wood and bark 4% (including <i>Alnus glutinosa</i> and <i>Betula</i> sp.), <i>Eriophorum</i> sp. 3% (mainly leaves), other 9% (including <i>Phragmites australis</i> (roots and rhizomes), leaves of <i>Sphagnum</i> sp., and seeds and fruits: <i>Betula</i> sect. Albae, <i>Carex</i> sp., <i>Juncus</i> sp.)	
0.40–0.45	<i>Carex</i> sp. 67% (mainly roots), Brown mosses 20%, wood 6% (including <i>Alnus glutinosa</i> and <i>Betula</i> sp.), <i>Phragmites australis</i> 3% other 4% (including <i>Eriophorum</i> sp. (mainly leaves), leaves of <i>Sphagnum</i> sp. and seeds and fruits: <i>Betula</i> sect. Albae, <i>Juncus</i> sp., <i>Carex</i> sp.)	Z2/2
0.50–0.55	<i>Carex</i> sp. 73% (mainly roots), wood and bark 7% (including <i>Alnus glutinosa</i> , <i>Betula</i> sp.), Brown mosses 5%, <i>Phragmites australis</i> 4% (roots and rhizomes), other 11% (including leaves of <i>Sphagnum</i> sp., and seeds and fruits: <i>Betula</i> sect. Albae, <i>Carex</i> sp., <i>Lycopus europaeus</i>)	
0.75–0.80	<i>Carex</i> sp. 71% (mainly roots), wood and bark 13% <i>Alnus glutinosa</i> , <i>Betula</i> sp. (mainly <i>A. glutinosa</i>), <i>Typha</i> sp. 5% (rhizomes), <i>Phragmites australis</i> 1% (roots and rhizomes), other 10% (including Brown mosses, leaves of <i>Sphagnum</i> sp., and seeds and fruits: <i>Betula</i> sect. Albae, <i>Carex</i> sp., <i>Juncus</i> sp.)	Z2/3
1.05–1.10	<i>Carex</i> sp. 68% (mainly roots), wood and bark 17% <i>Alnus glutinosa</i> , <i>Betula</i> sp., <i>Salix</i> sp. (mainly <i>A. glutinosa</i>), other 15% (including: rhizomes of <i>Typha</i> sp. <i>Phragmites australis</i> (roots and rhizomes) seeds and fruits: <i>Carex</i> sp., <i>Lycopus europaeus</i> , <i>Juncus</i> sp., <i>Rubus</i> sp.) sclerotia of <i>Cenococcum geophilum</i>	Z2/4
1.45–1.50	<i>Carex</i> sp. 80% (mainly roots), Brown mosses 6%, <i>Phragmites australis</i> 3% (roots and rhizomes), wood 3% (including <i>Alnus glutinosa</i> and <i>Betula</i> sp.), other 8% (including: fruits of <i>Betula</i> sect. Albae, rhizomes of <i>Equisetum</i> sp. and sclerotia of <i>Cenococcum</i>	

4 Discussion

The analyses of plant macrofossil remains from the peat deposit at Zapadź indicate that the key role in the building up of the peatland at most stages of its development was played by various rushes with a variable proportion of mosses. Accumulation of wood peat and the species composition of the herbaceous remains found in the material also indicate the periodic growth of alder forests. They dominated in the past when wet conditions occurred, evidenced by peat layers containing macrofossils of species such as *Sphagnum* spp. and *Menyanthes trifoliata* which are characteristic of habitats where the water table is relatively high and stable (Kłosowski and Kłosowski 2007; Table 1). The occurrence of *Menyanthes trifoliata* (3.30–3.35 m, 3.45–3.50 m) in the Z1 profile may also indicate periodic flooding of the mire surface. The occurrence of *Cenococcum geophilum* sclerotia also suggest periodic drying of the mire surface (Andersson et al. 2011), for example layers at 1.35–1.40 m and 1.55–1.60 m (Z1 profile) and the 1.00–1.50-m layer in the Z2 profile.

High values of $n\text{-C}_{23}$ and $n\text{-C}_{25}$ are associated with the occurrence of *Sphagnum* species (Table 1; e.g. Z1/2 sample) for which these chain lengths are characteristic (Nott et al. 2000; Pancost et al. 2002; Nichols et al. 2006). During analysis of the results, an increased amount of $n\text{-C}_{23}$ and $n\text{-C}_{25}$ was noted in the all the samples. Individual results vary in their content of $n\text{-C}_{23}$ and $n\text{-C}_{25}$ alkanes (e.g. Z1/7 sample) and, furthermore, high values of $n\text{-C}_{27}$ alkanes were observed. The unexpected distributions seen can indicate that some plant

species or tissues are more important sources of n -alkanes than others, such that they dominate the n -alkane distributions even when their macrofossil remains are not abundant. For similar dependencies take note of, inter alia, Pancost et al. (2002). Higher plants often contain n -alkanes, typically with the highest contents of $n\text{-C}_{29}$, $n\text{-C}_{31}$, and $n\text{-C}_{33}$, while $n\text{-C}_{23}$ and $n\text{-C}_{25}$ are minor as demonstrated in other studies, e.g. Eglinton and Hamilton (1967) and Schellekens and Buurman (2011). The data analysis showed a discrepancy in the occurrence of $n\text{-C}_{\text{max}}$ and peat-forming plants in individual layers. An example is sample Z1/8 whose contents are mainly brown mosses. However, high values of C_{27} n -alkane ($\text{C}_{\text{max}27}$) were observed at this depth. The reason for such a high content of C_{27} n -alkane may be the presence *Carex* spp. in the species composition. The relationship of this n -alkane with the presence of *Carex* spp. remains was also indicated by Ficken et al. (1998) and Ronkainen et al. (2013). The incompatibilities described may be related to the presence of partially decomposed macrofossils and the presence of plant species distinguished by an abundance of lipids in the peat (Pancost et al. 2002; Schellekens and Buurman 2011). Whereas for the Z1/7 sample, C_{max} was obtained with a domination of $n\text{-C}_{21}$, and this seems difficult to explain since the main plant component at this depth is composed of *Carex* spp (83%; Table 1). Such a result may be the effect of aerobic degradation which this causes chain length reduction in organic matter of peat, assuming that there is no preferential decay of n -alkanes with a specific chain length (Buurman et al. 2006; Schellekens et al. 2009). Chain length reduction may cause a relative increase in n -alkanes with a mid-chain length (provided that longer chain

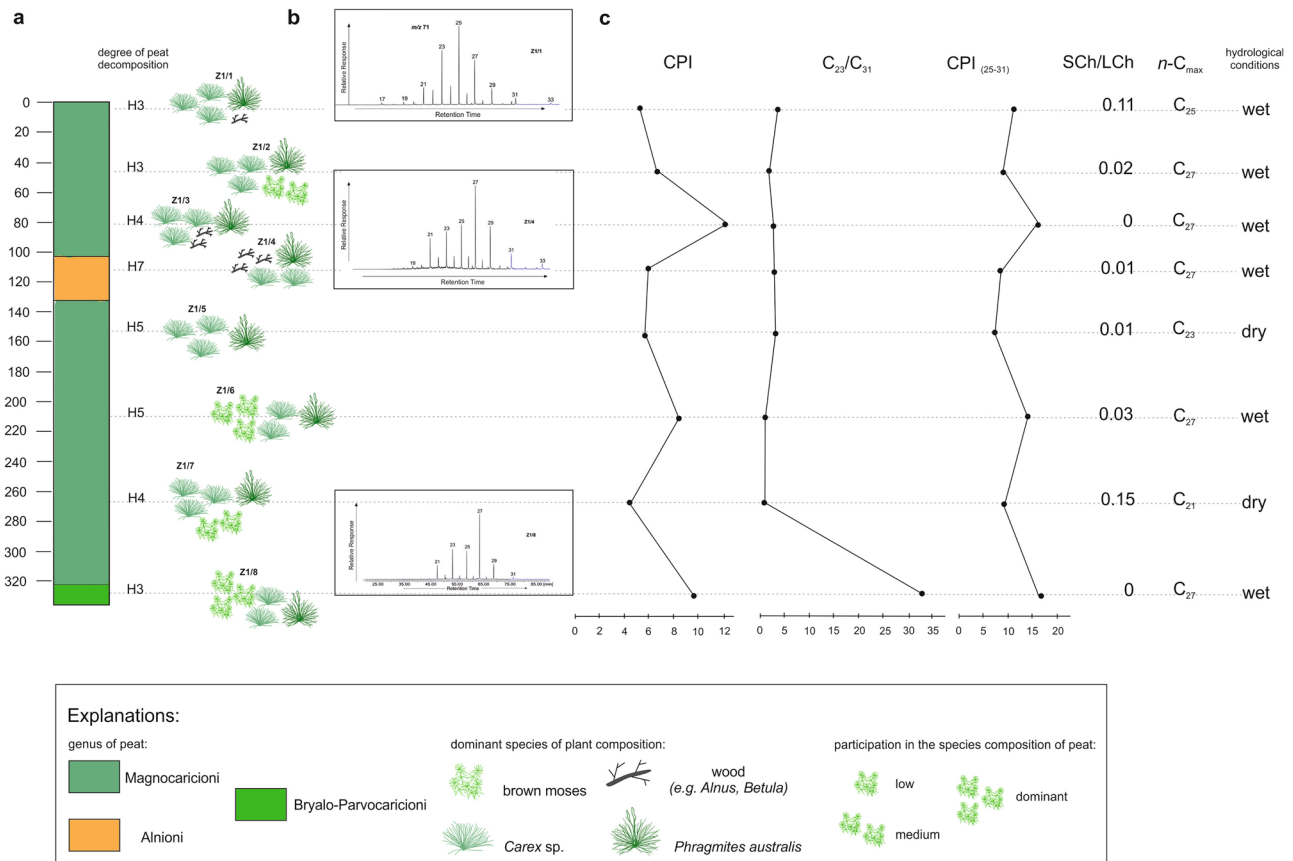


Fig. 2 Description of the peat samples from the Z1 core and their classification (according to Tołpa et al. 1971) and the variation of the geochemical proxies. **a** The variance of peat, taking into account the degree of decomposition and the share of dominant species of peat-

forming plants, **b** n-Alkane distribution in selected samples. Numbers over the peaks refer to the carbon number in a molecule. **c** Geochemical proxies based on the distribution of n-alkanes

lengths were initially dominant; Schellekens and Burman 2011). The result obtained could also be influenced by the degree of peat decomposition, which was defined as average in the layer analysed (H4; Fig. 2a). Peat decomposition can interfere with the interpretation of primary plant chemistry, which can lead to conflicting conclusions. Extensive results presented in Schellekens and Burman (2011) show that correct interpretation requires a combination of markers or their association with other proxies (e.g. n-alkenes). It may also help to compare the distribution of n-alkanes in different peat fractions, highlighting the influence of peat degradation leading to chain length changes.

This type of data indicates possible restrictions in the application of the n-alkane analysis as the only method of testing for environmental changes on peatlands. However, they do not exclude its use in multi-proxy studies along with classical palaeobotanical and palaeozoological methods.

In the Z1 and Z2 profiles, $n-C_{max}$ values are dominant for C_{27} n-alkanes. An example is a Z1/4 sample in which the species composition contains dominant wood and bark of *Alnus glutinosa* and *Betula* sp. strongly decomposed. This is

consistent with the findings of Zech et al. (2010) who indicated that for $n-C_{27}$ the maximum is related to the presence of *Betula* spp. and *Salix* spp. material. Such a relationship between the plant species composition and chain length of the n-alkane is also confirmed by Andersson et al. (2011). A significant difference was observed within the $n-C_{23}$ content in the study profiles. Such variability can be interpreted as reflecting the diversity of the *Sphagnum* species. A similar relationship was also indicated by Nott et al. (2000), Bingham et al. (2010), and Fabiańska et al. (2014).

Differentiation within the C_{23}/C_{31} ratio, and especially a very high value in the Z1/8 sample (Fig. 2c), can indicate a sudden change in environmental conditions (higher water table) during peatland formation. This is confirmed by the presence of *Menyanthes trifoliata* seeds in the sediment which prefer a high water level (Kłosowski and Kłosowski 2007). Low values in, e.g. the Z1/7 and Z2/4 samples, can instead suggest stable conditions—a relatively low water level in the Zapadź peatland. Plants recorded in the profiles also have a huge influence on low values of the $n-C_{23}/n-C_{31}$ ratio. The higher vascular plants, which dominate in the profiles (e.g. *Carex* spp., *Eriophorum*

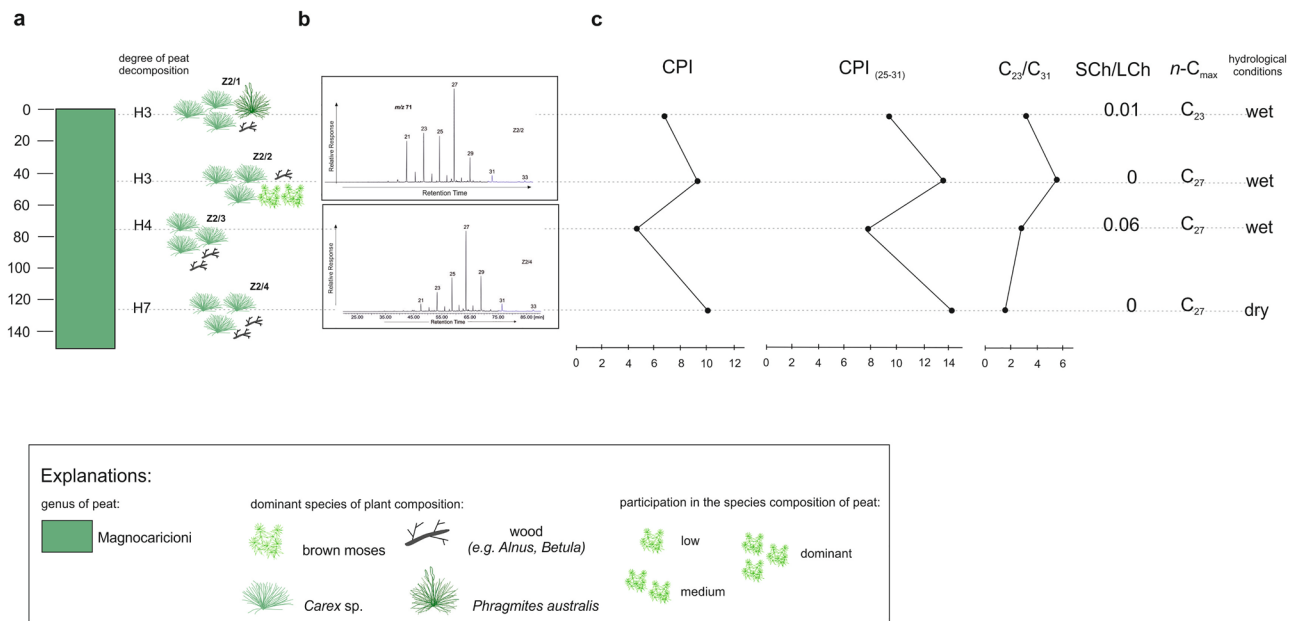


Fig. 3 Description of the peat samples from the Z2 core and their classification (according to Tołpa et al. 1971) and the variation of the geochemical proxies. **a** The variance of peat, taking into account the degree of decomposition and the share of dominant species of peat-

forming plants, **b** n-Alkane distribution in selected samples. Numbers over the peaks refer to the carbon number in a molecule. **c** Geochemical proxies based on the distribution of n-alkanes

vaginatum, *Phragmites australis*, *Betula* sect. *Albae*), have an influence on the low value of the $C_{23}/n-C_{31}$ ratio. This is confirmed by the research of Ronkainen et al. (2013). By contrast, the growing share of mosses (Figs. 2c, 3c) contributed to an increase in the value of this indicator, as seen in the studies by Nott et al. (2000) and Bingham et al. (2010). The variance of the $n-C_{23}/n-C_{31}$ ratio is also likely to result from changes resulting from the presence of *Sphagnum* spp. and brown mosses as components of peat, which was suggested by the results (e.g. Bingham et al. 2010; Pancost et al. 2002). These data confirm the results of Spearman’s rank correlation coefficient $r_s = 0.83$

($p = 0.03$, with the assumed significance level $p < 0.05$), indicating a very close relationship between brown mosses and the variance of the $n-C_{23}/n-C_{31}$ ratio.

The resulting CPI values are higher than 1 (Figs. 2c, 3c), indicating a predominance of odd over even *n*-alkane homologues (Schellekens and Buurman 2011). This indicator can be used as a diagnostic for determining the direction of the main biogenic sources of *n*-alkanes (Ruan et al. 2018). High values of the CPI indicate a high input of cuticular waxes of higher vascular plants into peats and a low maturity of organic matter (Fabińska et al. 2014). The species composition of the study

Table 3 Individual *n*-alkane homologue data (C_{19} – C_{35}) for peat horizons. Relative abundances normalized to major peak = 100

Sample	C ₁₉	C ₂₀	C ₂₁	C ₂₂	C ₂₃	C ₂₄	C ₂₅	C ₂₆	C ₂₇	C ₂₈	C ₂₉	C ₃₀	C ₃₁	C ₃₂	C ₃₃	C ₃₄	C ₃₅
Z1/1	1.2	4.0	23.1	19.1	90.4	22.3	100	11.6	70.1	0.8	34.3	3.6	19.5	2.4	8.8	0.0	0.0
Z1/2	3	2	45	12.5	93	14	78	11	100	11.5	79.5	4	45	2	13.5	0.0	0.0
Z1/3	0.0	0.0	26.3	5.4	45.5	4.8	40.7	5.1	100	5.6	42.4	0.0	12.7	0.0	0.0	0.0	0.0
Z1/4	1.5	1.5	31.5	13.1	55.4	13.5	51.7	11.6	100	10.5	68.5	1.9	16.5	0.4	3.7	0.0	0.0
Z1/5	0.0	5.2	73.9	22.7	100	17.5	74.4	15.2	73.5	5.2	60.7	1.9	24.6	1.9	11.8	0.0	0.0
Z1/6	5.1	5.1	23.6	13	94	12	68.1	8.8	100	6	61.6	1.4	64.4	1.4	14.8	0.0	0.0
Z1/7	13.6	11.1	100	22.8	8.2	11.7	42.7	7.6	63.3	2.8	24.1	0.9	7.6	0.0	0.0	0.0	0.0
Z1/8	0.0	0.5	22.2	6.6	53.6	4.2	42.2	4.2	100	4.2	33.2	0.8	1.3	0.0	0.0	0.0	0.0
Z2/1	1.8	1.8	56.2	16.4	100	16.4	87.7	12.3	88.1	6.4	54.3	1.4	26.9	1.8	2.3	0.0	0.0
Z2/2	0.7	1.4	49.1	10.7	76.5	8.3	48.4	6.2	100	5.2	38.1	0.7	11.8	0.3	2.4	0.0	0.0
Z2/3	5.9	6.3	61.5	19.6	39.6	13	40	12.6	100	6.3	53.3	3.7	12.2	0.0	0.0	0.0	0.0
Z2/4	0.3	0.8	10.5	4.7	30.7	5.5	34.8	6.1	100	6.1	59.4	1.1	16.9	0.3	2.5	0.0	0.0

samples is dominated mostly by *Carex* spp. (e.g. Z1/2, Z1/5, Z2/3) and *Phragmites australis* (e.g. Z1/5, Z2/1). The presence of these species in sediments is associated with the presence of medium- and long-chain *n*-alkanes (Nott et al. 2000; Nichols et al. 2006). The results of Spearman's correlation showed a significant relationship between a high content of *Carex* spp. and the value of C_{27} in the sample, $r_s=0.45$ ($p=0.03$, with an assumed significance level of $p<0.05$). A similar relationship was observed in the case of *Phragmites australis*, which also shows a high correlation with C_{27} ($r_s=0.66$), C_{29} ($r_s=0.67$), and C_{31} ($r_s=0.68$) at a level of significance of $p<0.05$. For the remaining medium- and long-chain *n*-alkanes, no significant correlation was found. The genesis of high CPI values (Figs. 2c, 3c) can be explained by comparing them with the species composition (Table 1). There is a correlation between a high proportion of vascular plants and higher CPI values in most samples (e.g. Z1/3, Z1/6, Z2/4). It is well illustrated, for example, by the significant correlation between the share of wood fragments or tree leaves in the sediment and the share of n - C_{29} ($r_s=0.68$, $p=0.0004$). The other samples do not show such clear dependencies. This seems to be related to the variation in the production of *n*-alkanes in different parts of specific plant species. An example is vascular plant species whose leaves show a higher concentration of *n*-alkanes than *Sphagnum* and other moss species (Ficken et al. 1998, 2000). The predominance of long-chain *n*-alkanes over short-chain in the study profiles is characteristic of terrestrial organic matter (Peters and Moldowan 1993). This is reflected in the botanical composition of the peat samples.

The interpretation of the results on *n*-alkane content in high-moor peat with regard to low-moor peat is open to debate if based on data in the literature. On account of the small number of studies on biomarkers occurring in transitional and low-moor peat, some authors use the same markers as occur with high-moor peat (Andersson et al. 2011; Andersson and Meyers 2012; Pastukhov et al. 2018).

However, the results on the contents of alkanes in low-moor peat presented by Pastukhov et al. (2018) present similar conclusions to the data which were obtained from the Zapadź peatland. The peatlands in north-eastern Europe and on the Zapadź site were dominated by long-chain *n*-alkane homologues (C_{27} , C_{29}) whose bioproductors are higher vascular plants. In the sites described by Pastuchow et al. (2018) and the Zapadź peatland, a large proportion of homologous *n*-alkanes of medium chain length (C_{23} , C_{25}) were also found.

5 Conclusions

The results of the palaeobotanical analysis made it possible to determine the hydrological changes in the Zapadź peatland. During the formation of the Zapadź peatland, wet conditions mainly prevailed with slight drying and a fire episode.

The *n*-alkanes found in individual layers were characteristic for peatland vegetation groups. The results indicate that the content of *n*-alkanes in general reflects vegetation changes in the individual phases of peatland formation.

The degree of peat decomposition had no significant effect on the distribution of *n*-alkanes. Only in the case of individual samples can it be assumed that the influence of the degree of degradation could have been significant. The results do not provide a clear assessment of the intensity of the impact on the distribution of the peat's right to distribute the *n*-alkanes. In the future, research should be supplemented with a combination of markers or an association with the other proxies (e.g. *n*-alkenes) proposed in the publication Schellekens and Buurman (2011).

Research has shown that analysis of the composition of *n*-alkanes as biomarkers is generally a good tool enabling the reconstruction of vegetation changes and hydrological conditions, not only in ombrotrophic peatlands, but also in low-moor and transitional peatlands. Thus, this may be used in studies on the history of river valley ecosystems where ombrotrophic peatlands are usually absent. However, due to its limitations, it should only be used as a valuable supplement to classical palaeobotanical and palaeozoological methods.

Acknowledgements We thank Prof. Leszek Marynowski and PhD Michał Bucha (University of Silesia, Katowice, Poland) for helpful discussions and GC-MS analysis. Special thanks go also to Seamus and Karolina Mulrooney for language correction.

Open Access This article is licensed under a Creative Commons Attribution 4.0 International License, which permits use, sharing, adaptation, distribution and reproduction in any medium or format, as long as you give appropriate credit to the original author(s) and the source, provide a link to the Creative Commons licence, and indicate if changes were made. The images or other third party material in this article are included in the article's Creative Commons licence, unless indicated otherwise in a credit line to the material. If material is not included in the article's Creative Commons licence and your intended use is not permitted by statutory regulation or exceeds the permitted use, you will need to obtain permission directly from the copyright holder. To view a copy of this licence, visit <http://creativecommons.org/licenses/by/4.0/>.

References

- Andersson RA, Kuhry P, Meyers P, Zebühr Y, Crill P, Mörth M (2011) Impacts of paleohydrological changes on *n*-alkane biomarker compositions of a Holocene peat sequence in the eastern European Russian Arctic. *Org Geochem* 42:1065–1075. <https://doi.org/10.1016/j.orggeochem.2011.06.020>
- Andersson RA, Meyers PA (2012) Effect of climate change on delivery and degradation of lipid biomarkers in a Holocene peat sequence in the eastern European Russian Arctic. *Org Geochem* 53:63–72. <https://doi.org/10.1016/j.orggeochem.2012.05.002>
- Baas M, Pancost R, Geel B, Sinninghe Damsté JS (2000) A comparative study of lipids in *Sphagnum* species. *Org Geochem* 31:535–541. [https://doi.org/10.1016/S0146-6380\(00\)00037-1](https://doi.org/10.1016/S0146-6380(00)00037-1)

- Balascio NL, D'Andrea WJ, Anderson RS, Wickler S (2018) Influence of vegetation type on n-alkane composition and hydrogen isotope values from a high latitude ombrotrophic bog. *Org Geochem* 121:48–57. <https://doi.org/10.1016/j.orggeochem.2018.03.008>
- Bastow TP, van Aarssen BGK, Lang D (2007) Rapid small-scale separation of saturate, aromatic and polar components in petroleum. *Org Geochem* 38:1235–1250. <https://doi.org/10.1016/j.orggeochem.2007.03.004>
- Bingham EM, McClymont EL, Väiliranta M, Roberts MD, Chambers Z, FM, Pancost RD, Evershed RP, (2010) Conservative composition of n-alkane biomarkers in Sphagnum species: implications for palaeoclimate reconstruction in ombrotrophic peat bogs. *Org Geochem* 41:214–220. <https://doi.org/10.1016/j.orggeochem.2009.06.010>
- Buurman P, Nierop KGJ, Pontevedra-Pombal X, Martínez-Cortizas A (2006) Molecular chemistry by pyrolysis-GC/MS of selected samples of the Penido Vello peat deposit, Galicia, NW Spain. In: Martini IP, Martínez-Cortizas A, Chesworth W (eds) *Peatlands: Evolution and Records of Environmental and Climate Change*. Elsevier, Amsterdam, pp 217–240
- Charman DJ (2002) *Peatlands and environmental change*. John Wiley and Sons, West Sussex
- Eglinton G, Hamilton RG (1967) Leaf epicuticular waxes. *Science* 156:1322–1335
- Fabiańska M, Szymczyk A, Chłapik M (2014) Fossil fuel compounds from fly dust in recent organic matter of southern Poland peats. *Chem Erde-Geochem* 74:237–250. <https://doi.org/10.1016/j.chemer.2013.07.006>
- Ficken K, Barber K, Eglinton G (1998) Lipid biomarker, $\delta^{13}C$ and plant macrofossil stratigraphy of a Scottish montane peat bog over the last two millennia. *Org Geochem* 28:217–237. [https://doi.org/10.1016/S0146-6380\(97\)00126-5](https://doi.org/10.1016/S0146-6380(97)00126-5)
- Ficken KJ, Li B, Swain DL, Eglinton G (2000) An n-alkane proxy for the sedimentary input of submerged/floating freshwater aquatic macrophytes. *Org Geochem* 31:745–749. [https://doi.org/10.1016/S0146-6380\(00\)00081-4](https://doi.org/10.1016/S0146-6380(00)00081-4)
- Gabov DN, Beznosikov VA, Gruzdev IV, Yakovleva EV (2017) Accumulation of n-alkanes and arboxylic acids in peat mounds. *Eurasian Soil Sci* 50(10):1138–1153. [https://doi.org/10.1016/S0146-6380\(00\)00081-4](https://doi.org/10.1016/S0146-6380(00)00081-4)
- Kłosowski S, Kłosowski G (2007) *Flora Polski. Rośliny wodne i bagiennie*. MULTICO Oficyna Wydawnicza, Warszawa (in Polish)
- Kotarba M, Kowalski A, Więclaw D (1994) Nowa metoda obliczeń wskaźnika CPI i wykorzystanie dystrybucji n-alkanów i izoprenoidów prospekcji naftowej - instrukcja metodyczna analiz z zakresu geochemii organicznej dla potrzeb poszukiwań naftowych. *Materiały wewnętrzne AGH*, pp. 82–91 (in Polish)
- Maliński E, Witkowski A (1988) Węglowodory jako biomarkery – źródła ich pochodzenia, znaczenie i wykorzystanie w geochemii organicznej. *Przegląd Geol* 36:25–32 (in Polish)
- Nichols JE, Booth RK, Jackson ST, Pendall EG, Huang Y (2006) Paleohydrologic reconstruction based on n-alkane distributions in ombrotrophic peat. *Org Geochem* 37:1505–1513. <https://doi.org/10.1016/j.orggeochem.2006.06.020>
- Nichols JE, Walcott M, Bradley R, Pilcher J, Huang Y (2009) Quantitative assessment of precipitation seasonality and summer surface wetness using ombrotrophic sediments from an Arctic Norwegian peatland. *Quat Res* 72:443–451. <https://doi.org/10.1016/j.yqres.2009.07.007>
- Nott CJ, Xie S, Avsejs LA, Maddy D, Chambers FM, Evershed RP (2000) n-Alkane distributions in ombrotrophic mires as indicators of vegetation change related to climatic variation. *Org Geochem* 31:231–235. [https://doi.org/10.1016/S0146-6380\(99\)00153-9](https://doi.org/10.1016/S0146-6380(99)00153-9)
- Pancost RD, Baas M, Geel B, Sissinghe Damsté JS (2002) Biomarkers as proxies for plant inputs to peats: an example from a sub-boreal ombrotrophic bog. *Org Geochem* 33:675–690. [https://doi.org/10.1016/S0146-6380\(02\)00048-7](https://doi.org/10.1016/S0146-6380(02)00048-7)
- Pastukhov AV, Knoblauch C, Yakovleva EV, Kaverin DA (2018) Markers of soil organic matter transformation in permafrost peat mounds of northeastern Europe. *Eurasian Soil Sci* 51(1):42–53. <https://doi.org/10.1134/S1064229318010131>
- Peters KE, Moldowan JM (1993) *The biomarkers guide. Interpreting molecular fossils in petroleum and ancient sediments*. Prentice Hall, Englewood Cliffs, New Jersey
- Ronkainen T, McClymont EL, Väiliranta M, Tuittila ES (2013) The n-alkane and sterol composition of living fen plants as a potential tool for palaeoecological studies. *Org Geochem* 59:1–9. <https://doi.org/10.1016/j.orggeochem.2013.03.005>
- Ruan X, Ye H, Lu Q, Yang Z (2018) Historical record, source, and toxicity assessment of sedimentary organic matter using molecular composition of hydrocarbons in an urban lake, Wuhan. *China J Soils Sediments* 18:2081–2092. <https://doi.org/10.1007/s11368-018-1956-9>
- Rybicki M, Marynowski L, Misz-Kennan M, Simoneit B (2016) Molecular tracers preserved in Lower Jurassic “Blanowice brown coals” from southern Poland at the onset of coalification: organic geochemical and petrological characteristics. *Org Geochem* 102:77–92. <https://doi.org/10.1016/j.orggeochem.2016.09.012>
- Rydin H, Jeglum JK (2013) *The Biology of Peatlands. Biology of Habitats*. Oxford Scholarship. <https://doi.org/10.1093/acprof:osobl/9780199602995.001.0001>
- Schellekens J, Buurman P (2011) n-Alkane distributions as palaeoclimatic proxies in ombrotrophic peat: The role of decomposition and dominant vegetation. *Geoderma* 163(3):112–124. <https://doi.org/10.1016/j.geoderma.2011.05.012>
- Schellekens J, Buurman P, Pontevedra-Pomba X (2009) Selecting parameters for the environmental interpretation of peat molecular chemistry—a pyrolysis-GC/MS study. *Org Geochem* 40:678–691. <https://doi.org/10.1016/j.orggeochem.2009.03.006>
- Tołpa S, Jasnowski M, Pałczyński A (1971) New classification of peat based on phytosociological methods. *Bulletin International Peat Society* 2:9–14
- Zhang Y, Meyers PA, Gao C, Liu X, Wang J, Guoping Wang G (2017) Holocene climate change in northeastern China reconstructed from lipid biomarkers in a peat sequence from the Sanjiang Plain. *Org Geochem* 113:105–114. <https://doi.org/10.1016/j.orggeochem.2017.07.018>
- Zech M, Andreev A, Zech R, Müller S, Hambach U, Frechen M, Zech W (2010) Quaternary vegetation changes derived from a loess-like permafrost palaeosol sequence in northeast Siberia using alkane biomarker and pollen analyses. *Boreas* 39:540–550. <https://doi.org/10.1111/j.1502-3885.2009.00132.x>

Publisher's Note Springer Nature remains neutral with regard to jurisdictional claims in published maps and institutional affiliations.