

A chance-constrained programming model for airport ground movement optimisation with taxi time uncertainties

Xinwei Wang^{a,b}, Alexander E.I. Brownlee^c, Michal Weiszer^d, John R. Woodward^b,
Mahdi Mahfouf^e, Jun Chen^{d,*}

^a*School of Traffic and Transportation Engineering, Central South University, China*

^b*School of Electronic Engineering and Computer Science, Queen Mary University of London, UK*

^c*Division of Computing Science and Mathematics, University of Stirling, UK*

^d*School of Engineering and Materials Science, Queen Mary University of London, UK*

^e*Department of Automatic Control and Systems Engineering, University of Sheffield, UK*

Abstract

Airport ground movement remains a major bottleneck for air traffic management. Existing approaches have developed several routing allocation methods to address this problem, in which the taxi time traversing each edge of the taxiways is fixed. However, taxi time is typically difficult to estimate in advance, since its uncertainties are inherent in the airport ground movement optimisation due to various unmodelled and unpredictable factors. To address the optimisation of taxi time under uncertainty, we introduce a chance-constrained programming model with sample approximation, in which a set of scenarios is generated in accordance with taxi time distributions. A modified sequential quickest path searching algorithm with local heuristic is then designed to minimise the entire taxi time. Working with real-world data at an international airport, we compare our proposed method with the state-of-the-art algorithms. Extensive simulations indicate that our proposed method efficiently allocates routes with smaller taxiing time, as well as fewer aircraft stops during the taxiing process.

Keywords: air traffic management, airport ground movement, chance-constrained programming, quickest path search, taxi time uncertainties

1. Introduction

The International Air Transport Association forecasts current passenger numbers could double to 8.2 billion no later than 2040 [1]. Despite the global pandemic of 2020,

*Corresponding author.

Email addresses: xinwei.wang.china@gmail.com (Xinwei Wang), sbr@cs.stir.ac.uk (Alexander E.I. Brownlee), m.weiszer@qmul.ac.uk (Michal Weiszer), j.woodward@qmul.ac.uk (John R. Woodward), m.mahfouf@sheffield.ac.uk (Mahdi Mahfouf), jun.chen@qmul.ac.uk (Jun Chen)

it is believed that the long-term growth of aviation is likely to resume in time [2]. However, this increasing trend for air transport, and the economic benefits driven by aviation, could be curtailed due to limited airport infrastructure capacities [3]. This bottleneck has been recognised as one of the greatest challenges to future aviation industry [4], and thus there is an urgent need to develop a more efficient decision support system for airport operations.

As a major component of airport operations, the airport ground movement (AGM) [5] which allocates aircraft routes from the gate to the runway or vice versa, is closely related to other airport operation subproblems, e.g., runway scheduling [6] and gate allocation [7, 8, 9], and thus has a huge impact on flights throughput. Although only a small part of air traffic management procedure, AGM contributes a large portion of fuel consumption and emissions for flight operations. This is reasonable since the aircraft engine is designed for cruising speed in the air, while it operates inefficiently on the airport ground at low speed. In accordance with the industry report in [10], the fuel consumption due to aircraft taxiing at the congested airport makes up around 6% of the whole fuel consumption, leading to 5 million tonnes of fuel cost throughout the world. The AGM on the taxiways is therefore identified as a critical problem and has received increasing attention in recent years [11, 12, 13]. A comprehensive literature review in AGM optimisation will be provided in the next section.

Although various methods have been applied in AGM optimisation, one critical issue remaining largely unaddressed by existing research (notable exceptions in [14, 15, 13]) is the taxi time uncertainties inherent in AGM optimisation. The aircraft taxi time is typically difficult to predict, since various factors, e.g., outside environment and airport layout, may heavily impact the actual taxi time [16]. The majority of the existing AGM optimisation studies neglected the taxi time uncertainties, and simply modelled the taxi time for each taxiway as a fixed value. However, the simplification of taxi time modelling can lead to conflicts when an aircraft arrives at certain taxiway point before or after the predicted time. This issue has been partially addressed by a series of research for AGM online scheduling [17, 18, 19, 20, 21], in which the AGM has been modelled as a dynamic routing problem, and the routing results are updated through iteratively solving the routing problem with the latest information. These reactive scheduling models are promising solutions to address the AGM with taxi time uncertainties, however, the online scheduling requirements are difficult to satisfy, especially when incorporating real-time practical speed profiles with respect to operational constraints [5]. Also, online scheduling methods need to be computationally fast, which may not be the case if more complex routing methods are to be employed in future (e.g., multi-objective routing).

Instead, developing proactive methods, which address uncertainties with distribution information in advance, could be an alternative for AGM optimisation with taxi time uncertainties. Previously, simulation based models were established to analyse the influence of the uncertainties of AGM, and it was established that they lead to delays [14, 15]. Scala

et al. [22] integrated the near-airspace landing aircraft sequencing and AGM optimisation together, and designed a closed-loop feedback simulation framework under uncertainty to address the integrated airport capacity management problem. Brownlee *et al.* [13] first presented the taxi time uncertainties with fuzzy membership functions, and extended the quickest path problem with time windows (QPPTW) algorithm [23] to generate multiple routes for different uncertainty levels. However, the modified Fuzzy-QPPTW algorithm typically estimates taxi time with worst cases, and therefore allocates longer and over-conservative routes to avoid aircraft conflicts. This leads to wasted capacity at the airport and unnecessary increased delays and emissions.

To better incorporate the taxi time uncertainties into the AGM model and generate more effective aircraft routes, this paper introduces the chance-constrained programming (CCP) model with sample approximate method [24, 25], and proposes a modified CCP-QPPTW algorithm with a local heuristic method to allocate more efficient aircraft routes that are still robust. Note the CCP-QPPTW and Fuzzy-QPPTW are both developed based on the deterministic QPPTW routing method. However, they address the taxi time uncertainties in different ways. CCP-QPPTW adopts the CCP model to approximate the taxi time uncertainties and then applies QPPTW under each generated scenario, while Fuzzy-QPPTW relates to an adaptive Mamdani fuzzy rule based system to handle the fuzzy taxi time estimates; the fuzzy time estimates are propagated along the length of the route and used to add extra reserved times to the edge reservations. More specifically, the scheduled aircraft routes are obtained considering different conservative degrees, i.e., the confidence level in the CCP-QPPTW algorithm, thus avoiding over-conservative routes and reducing total taxi times. Besides, the proposed method is computationally efficient as compared to the state-of-the-art algorithm, which we will show later. To the best of our knowledge, we are the first to introduce CCP in the domain of AGM optimisation, while CCP models have been widely adopted in general scheduling problems [26, 27] and engineering applications [28, 29, 30].

Therefore the overarching original contributions of this work can be summarized as follows: (1) The AGM optimisation with taxi time uncertainties has not been well addressed; for the first time we introduce the CCP to model this problem. (2) Building upon the CCP model, a set of scenarios is generated to approximately represent the uncertainties, and a modified sequential quickest path routing method based on the multi-scenarios is proposed to tackle the uncertain AGM problem. (3) The proposed CCP model and routing method are validated using real-world data at an international airport. (4) By comparing with the state-of-the-art algorithms, we show that the proposed method achieves superior performance both in terms of entire taxi times, number of aircraft stops, and computational efficiency.

This paper is organized as follows: Section 2 provides a comprehensive literature review for the AGM optimisation; Section 3 describes the AGM optimisation problem in detail and formulates a CCP model to address the AGM with taxi time uncertainties;

a modified sequential shortest path searching method based on CCP is developed in Section 4, followed by the computational results and discussions presented in Section 5; finally, conclusions are drawn in Section 6, in which the important contributions of our work and potential future directions are highlighted.

2. Literature review

To clearly ~~outline~~~~present~~ the state of the art of AGM studies, the reviewed literature has been classified ~~into~~~~with~~ three different modelling techniques: mixed-integer linear programming (MILP), graph-based and simulation-based models. An overview of the AGM research is listed in Table 1.

The MILP models, in which the scheduling & routing results can be efficiently obtained by commercial solvers, have been contributed to the AGM over the last decade. Roling and Visser [17, 18] formulated the AGM as a MILP model, in which the uncertain aircraft landing/pushback times are dynamically adapted to produce robust solutions. The capabilities of the proposed model ~~were~~~~was~~ illustrated in a simple hypothetical airport. Evertse and Visser [19] considered an online version of AGM, aiming to minimise the emissions resulting from the taxiing movements. The problem was described as MILP formulations with weighted multiple objectives, e.g., aircraft departure/arrival time deviations, taxi time, emissions, and fuel consumption.

Similar to the above studies, Zou *et al.* [21] established an integer programming model, in which the iterative two-stage scheduling strategy was proposed to minimise the taxi time of AGM. All aircraft were assigned the initial 4 dimensional routes by an integer programming model in the first stage, and the landing aircraft which have unavailable initial routes due to uncertainties were rescheduled using a shortest path based algorithm. Simulation results of the Beijing Capital International Airport demonstrated superior performance of the proposed method.

Another stream of approaches to address AGM optimisation is graph-based modelling techniques. In accordance with a decision support system based on graph theory, García *et al.* [32] developed an integrated approach composed of a genetic algorithm (GA) and a time-space dynamic flow management algorithm for real-world airport ground operations.

To address the airport environmental issues, Ravizza *et al.* [35] modelled the AGM with the trade-off between taxi time and fuel consumption. A combination of a graph-based routing algorithm [47] and a population adaptive immune algorithm [48] to generate Pareto speed profiles was designed for the multi-objective model. Ravizza *et al.* [23] further addressed the AGM problem with a sequential graph based algorithm, which can absorb as much waiting time for delay as possible at the stand. A lower bound was obtained as well.

Weiszer *et al.* [36] considered a multi-component optimisation model for the AGM, consisting of routing & scheduling problem and the speed profile optimisation problem, which aims to minimise the taxi time and fuel consumption. A heuristic with efficient

Table 1: Overview of the studies in airport ground movement.

Authors	Year	Multi-objective	Model	Methodology	Airport
Gotteland&Durand [31]	2003	No	Simulation-based	GA	Charles De Gaulle
García <i>et al.</i> [32]	2005	No	Graph-based	GA & dynamic flow management algorithm	Madrid International
Roling&Visser [17, 18]	2008, 2009	No	MILP	Solver for online scheduling	Hypothetical
Clare & Richards [33]	2011	No	Integrated model, MILP	Solver	London Heathrow
Koeners & Rademaker [14]	2011	No	Simulation-based	Time margins	Amsterdam Schiphol
Mori [34]	2013	No	Simulation-based	Nagel-Schreckenberg (NS) model	Tokyo International
Ravizza <i>et al.</i> [35]	2013	Yes	Graph-based	Routing algorithm & EA	Zurich
Ravizza <i>et al.</i> [23]	2014	No	Graph-based	Quickest Path Problem with Time Windows (QPPTW)	Zurich
Weiszer <i>et al.</i> [36]	2014	Yes	Graph-based, speed profiles	Routing algorithm & EA	Zurich
Khadilkar & Balakrishnan [37]	2014	No	Simulation-based	Control strategy	Boston International
Lobato <i>et al.</i> [38]	2015	No	Integrated model, graph-based	Iterated local search heuristic	/
Weiszer <i>et al.</i> [12]	2015	Yes	Integrated model	GA	Doha International
Zhang <i>et al.</i> [39, 40]	2016, 2018	No	Simulation-based	Dynamic routing for online scheduling	Nanjing Lukou, London Heathrow, Shanghai Pudong
Evertse&Visser [19]	2017	Yes	MILP	Solver for online scheduling	Amsterdam Schiphol
Yang <i>et al.</i> [41]	2017	No	Simulation-based	Macroscopic fundamental diagram	Guangzhou Baiyun
Adacher <i>et al.</i> [42]	2018	Yes	Graph-based	Two-stage constructive heuristic	Milan Malpensa
Brownlee <i>et al.</i> [13]	2018	No	Graph-based, taxi time uncertainty	Fuzzy QPPTW	Manchester
Brownlee <i>et al.</i> [20]	2018	No	Graph-based	GA & Rolling window for online scheduling	Hong Kong, Doha International, Beijing Capital
Dabachine <i>et al.</i> [43]	2018	No	Graph-based	Hybrid A* algorithm for online scheduling	Casablanca
Weiszer <i>et al.</i> [44]	2018	Yes	Graph-based	EA	Doha International, Beijing Capital
Zou <i>et al.</i> [21]	2018	No	Integer programming	Solver for online scheduling	Beijing Capital
Zhang <i>et al.</i> [45]	2019	Yes	Simulation-based	GA	Shanghai Pudong, Kunming Changshui, Lhasa Gonggar
Weiszer <i>et al.</i> [46]	2020	Yes	Graph-based	Multi-graph routing with user preferences	Doha International, Hong Kong, Beijing Capital
Scala <i>et al.</i> [22]	2021	No	Simulation-based	Closed-loop feedback optimisation	Charles de Gaulle

computation procedure was designed to approximate the trade-off curve between the two objectives. Furthermore, Weiszer *et al.* [12] combined several different airport ground problems, including aircraft routing & scheduling (i.e., AGM), 4-dimensional trajectory optimisation, runway scheduling and airport bus scheduling, and proposed a holistic economic optimisation framework. A multi-objective GA was adopted and verified on real data from an international hub airport. Weiszer *et al.* [44, 46] also proposed a preference-based multi-objective evolutionary optimisation framework for AGM. The evolutionary search algorithm used modified crowding distance to take into account cost of delay and fuel price. As a result, the search algorithm achieved faster convergence and potentially better solutions.

Based on an iterated local search method in the modelled airport networks, a fast heuristic solution respecting all safety regulations was proposed in [38]. The computational results demonstrated its superior performance compared with a MILP approach. Adacher *et al.* [42] addressed the AGM optimisation, aiming to minimise the routed taxi delay time and the pollution emissions, which are presented with engine idle times. The alternative graph model was introduced to solve the problem, in which the taxi delay time was optimised in the first phase, followed by the minimisation of the emissions.

Brownlee *et al.* [20] applied the A* algorithm to find the shortest taxi-time paths on AGM optimisation, where the aircraft allocation orderings are optimised through a rolling window approach incorporating GA. Simulations of three international airports demonstrated the GA reduced overall taxi time with respect to other approaches. Similarly, Dabachine *et al.* [43] first introduced three routing algorithms, i.e., Dijkstra, bidirectional Dijkstra, and A* with different strengths and weaknesses. A new hybrid A* algorithm was therefore further designed to integrate the advantages of the three algorithms.

AGM optimisation has also been addressed with simulation-based methods, which are typically problem specific and can provide practical solutions with aircraft trajectories. Mori [34] focused on the airport movement modelling accuracy and developed a new simulation method building upon the Nagel-Schreckenberg model, which is originally a car congestion model. The proposed model was validated at Tokyo International Airport. Zhang *et al.* [39, 40] established a refined trajectory-based AGM optimisation model, and developed a dynamic routing and timing algorithm to minimise the shortest taxi time. The simulation results showed the advantages of the proposed method over existing approaches in [23].

Yang *et al.* [41] analysed the flow characteristics of airport ground network on both mesoscopic and macroscopic level, and proposed an efficient modelling approach for simulating congestion on taxiway and apron networks. The proposed model was shown to be an efficient and accurate method for supporting the AGM. Zhang *et al.* [45] considered a multi-objective optimisation scheme for AGM under different operating environments, in which the taxi time, fuel consumption, and emissions may vary due to environments. The proposed optimisation problem was solved by a GA, which has been validated and

compared [based on](#) three different China's airports.

Throughout the above literature review, the research gap for current AGM studies can be identified as follows: although various approaches have been proposed for AGM optimisation, limited research has proactively considered the uncertainties from the aircraft taxi time, which can heavily influence the practical AGM performance. Gotteland and Durand [31] proposed an airport ground traffic simulation tool, in which the uncertainties were defined as a fixed percentage of the initial taxiing speed. Clare and Richards [33] considered a coupled problem of airport taxiway routing (i.e., the ground movement) and runway scheduling, and applied a routing horizon during which the routes were determined and then updated iteratively. Koeners and Rademaker [14] considered time margins to overcome the possible taxi time uncertainties, which is similar to the buffer taxi time in [23]. Khadilkar and Balakrishnan [37] regarded the AGM as a congestion control problem, and further developed a stochastic model to address the random taxi times. Notice these studies focused more on the analysis of the taxi times, and then reactively updated aircraft routes with real-time requirements. Besides, adding buffer time to absorb taxi time uncertainties is sensitive to parameter setting. If not set properly, it will result in worse performance with increased delays and emissions.

Recently, Brownlee *et al.* [13] applied the fuzzy rule-based systems to estimate aircraft taxi time and their uncertainties. Furthermore, a modified Fuzzy-QPPTW was developed for AGM optimisation. However, the results are over-conservative to some extent, as Fuzzy-QPPTW considers the worst scenarios for aircraft route allocation (We will identify the over-conservatism in the simulation section). How to properly incorporate the taxi time uncertainties into the AGM modelling, and proactively generate more practical routing results remains unexplored. We aim to fill this gap in the present work.

3. Chance-constrained programming for AGM

In this section, the problem of AGM with fixed taxi times is initially described and modelled in an undirected graph, followed by an extension building upon the CCP sample approximation model which addresses the taxi time uncertainties.

3.1. Problem description with fixed taxi times

The AGM allocates routes from the runway to the gate for arrival aircraft, or vice versa for departure flight. To clearly state the AGM problem, several assumptions and simplifications are provided as follows.

- (i) The objective of the AGM optimisation is to minimise the sum of taxi time for all flights over a routing horizon.
- (ii) The runway and gate are assumed to be predetermined by gate allocation and runway scheduling methods. Changes to runway sequence or gate allocations can

be accommodated by iteratively using route allocation algorithm, which is outside the scope of this work.

- (iii) In the process of AGM optimisation, each edge on the taxiway graph can only have one aircraft at a time, and the aircraft must respect safe distances with other aircraft moving on the airport.
- (iv) In the premise that the aircraft can follow the runway schedule, the aircraft should be held at the gate as long as possible, so that the fuel consumption and emissions can be efficiently reduced.
- (v) The taxi time for aircraft traversing the taxiways is deterministic and can be calculated ahead of time according to airport operational and environmental conditions; etc.

The AGM optimisation problem can now be established in line with [23, 13]. As illustrated in Figure 1, the airport layout is described as an undirected graph $G(V, E)$, where edges E denote the taxiways and vertices V the gates, junctions and intermediate taxiing points. For each edge $e \in E$, an associated set of taxi times T_e is provided as inputs. As indicated in Assumption (v), the taxi time for each aircraft can be different due to environmental and operational conditions, and these different values have been included in T_e . To maintain the safety constraints in Assumption (iii), each edge is restricted with no more than one aircraft at any time. The threshold of safety distance is set as 60 metres in accordance with previous research [23, 13]. Consequently, longer edges are divided into several shorter edges no more than 60 meters through adding intermediate taxiing points in advance. Notice that several aircraft can still taxi simultaneously on a long taxiway, as it has been divided into several shorter edges.

To realise the safety distance constraints in the graph, a set of time windows F_e is further introduced to represent the edge availability. Here a time window is an interval when the edge is free to be traversed by an aircraft. Denote the set of aircraft as A and the allocated conflict-free route as r_i for each aircraft $i \in A$. When a conflict-free route r_i is allocated to aircraft i with specific taxi times for each edge along the route, the corresponding time windows list F_e would be updated through deducting the already allocated taxiing interval. Moreover, the minimum safety distance needs to be satisfied through checking other edges nearby. In doing so, the graph G is preprocessed to identify conflict edges set $conf_e$ within minimum safety distance for each edge $e \in E$. When the edge e is occupied by an aircraft within a certain time window, the corresponding time windows set F_{e+} for each $e+ \in conf_e$ is updated to block the same taxiing duration as well.

Therefore the AGM optimisation problem can be structured as

$$\min \sum_{i \in A} t(r_i) \tag{1}$$

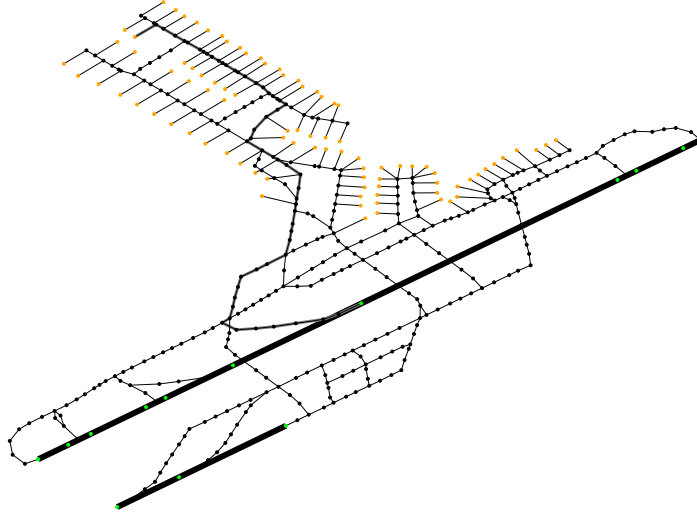


Figure 1: Example of an undirected graph generated from an airport layout. Green, black, and yellow dots represent the nodes of runways, taxiways and gates respectively.

subject to

$$st(r_i) = arrt_i \quad \forall i \in A_r \quad (2)$$

$$et(r_i) = dept_i \quad \forall i \in A_d \quad (3)$$

$$N(e, t) \leq 1 \quad \forall e \in E, t \in H \quad (4)$$

$$(H \setminus F_e) \cap F_{e+} = \emptyset \quad \forall e \in E, e+ \in conf_e \quad (5)$$

where $t(r_i)$ is the entire taxi time for aircraft i , $st(r_i)/et(r_i)$ is the route start/end time, $arrt_i/dept_i$ is the predetermined aircraft landing/taking-off time, A_r/A_d is the set of arrival/departure flights, $N(e, t)$ indicates the number of aircraft on edge e at time t , H is the scheduling horizon. The objective function (1) aims to minimise the total taxi time. The predetermined runway scheduling results are complied with constraints (2) and (3). The safety distance constraints are satisfied with (4) and (5), through iteratively updating and checking the time windows sets. **The decision variables are the routes r_i to be allocated for each aircraft.**

It is worth noting that we established the AGM optimisation problem as a graph-based sequential searching model. Nevertheless, the CCP extension as shown in the next section is general and in theory could be applied to not only sequential approaches. Other routing algorithms, such as the ones based on MILP formulations could also be used. However, such MILP based approaches which could consider more aircraft at the

same time with uncertain taxi times and remain computationally inexpensive requires more investigation for future work.

3.2. CCP extension

In the above subsection, the taxi time on the taxiways (i.e., the edges in the graph) is assumed to be fixed, while the uncertainties of taxi time are inevitable in practice [49, 50]. To address this issue, various methods have been developed to improve the taxi time prediction accuracy [51, 52]. Nevertheless, due to the uncertain nature of the taxi time, one can hardly estimate the exact time. Instead, it is more practical to present the uncertainties with a bounded range, which can be obtained through statistical data processing [51] and has been applied in [13] as inputs for AGM optimisation. Therefore the fixed taxi time values for each edge e in taxi time set T_e are now replaced by a set of bounded ranges, i.e., $T_e = \{[tl_1, tu_1], [tl_2, tu_2], \dots\}$.

To properly incorporate the taxi time uncertainties into the AGM optimisation, the CCP, which ensures that the probability of meeting constraints is above a certain level, is introduced in this section. Thus, we extend the previous deterministic AGM model to a CCP model, where $1 - \alpha$ represents the predefined confidence level. The objective function (1) is modified and the chance constraint is added as

$$\min f \tag{6}$$

subject to

$$Pr\left\{\sum_{i \in A} t(r_i) \leq f\right\} \geq 1 - \alpha \tag{7}$$

where $Pr\{\cdot\}$ denotes the event probability, and the taxi time $t(r_i)$ for scheduled route r_i could vary due to uncertain traversing time at each taxiway. f is defined as the entire taxi time under certain confidence level, as explained over the remainder of this section.

The CCP objective function (6) is to minimise the entire aircraft taxi time under predefined confidence level. The chance constraint (7) restricts the objective function value. The CCP model for AGM optimisation with taxi time uncertainties is then formulated as: minimise f , subject to constraints (2) to (5) and (7).

The CCP model is advantageous for its flexible uncertainty level settings. When the confidence level $1 - \alpha$ is set as 1, the CCP model aims to find the routes with minimal taxi time upper bound over all possible probabilities. The idea of this setting is similar to [13], where the Fuzzy-QPPTW algorithm was developed to search minimal taxi time considering the worst scenarios. Although robust solutions can be provided in this setting, we will demonstrate that the robust solutions are over-conservative to some extent in Section 5. For the CCP model, the over-conservative property can be easily accommodated via lowering its confidence level. For instance, when $1 - \alpha$ equals 0.5,

the CCP model would seek for the routes solutions that have a minimal upper bound of the taxi time in half of the entire possible scenarios. Note the scheduled aircraft routes can always ensure operational constraints (2) to (5) through holding on certain taxiways; different setting of α only influences the calculation of f in (7), which is not a hard operational constraint. Therefore, decision makers can balance the robustness and effectiveness of the aircraft routes through adjusting the predefined confidence level. More explanations and clarifications of the CCP uncertainty level can be found in [24, 25].

However, the proposed CCP model for AGM cannot be directly solved since we have difficulty in calculating the event probability in the chance constraint (7). A sample approximation approach, which generates a set of scenarios to present the taxi time uncertainties, is thus adopted to approximately calculate the chance constraint [25]. Denote the scenarios as $W = \{w_0, w_1, w_2, \dots\}$, where every $w_s \in W$ corresponds to an undirected graph G^s . For each edge e^s in G^s , its associated taxi time ranges in set T_e^s are randomly sampled, resulting in a sampled taxi time set as $T_e^s = \{\hat{t}_1^s, \hat{t}_2^s, \dots\}$, in which $\hat{t}_i^s \in [tl_i, tu_i](i = 1, 2, \dots)$. Consequently, the bounded ranges of taxi time due to uncertainties have been substituted by the sampled values in different scenarios.

Given the predefined confidence level $1 - \alpha$, the inequality $\sum_{i \in A} t(r_i) \leq f$ in (7) needs to be checked in each scenario and is allowed to be infeasible at most $|W| \cdot \alpha$ scenarios, where $|W|$ is the number of scenarios. The binary variable y_s is introduced for each scenario $w_s \in W$: $y_s = 1$ if the entire taxi time of allocated aircraft routes $\sum_{i \in A} t^s(r_i)$ is larger than f and $y_s = 0$ otherwise. In doing so, the chance constraint (7) now can be replaced by the sample approximation constraints as

$$\sum_{i \in A} t^s(r_i) \leq y_s \cdot M + f \quad \forall w_s \in W \quad (8)$$

$$\sum_{w_s \in W} y_s \leq |W| \cdot \alpha \quad (9)$$

where $\sum_{i \in A} t^s(r_i)$ denotes the entire taxi time under scenario w_s and M is a large enough number. When $y_s = 0$, constraints (8) indicate that the entire taxi time must be lower than or equal to f ; otherwise the entire taxi time is allowed to be larger than f since the inequality always holds with the big M . Constraints (9) ensure that the number of scenarios, whose entire taxi time is larger than f , should be at most equal to $|W| \cdot \alpha$. Therefore, the CCP sample approximation model for AGM with taxi time uncertainties is to minimise f , subject to constraints (2) to (5), (8) and (9).

The sample approximation constraints can also be analysed as follows: constraint (9) shows that we only need to consider part of the scenarios with the lower simulated taxi time $\sum_{i \in A} t^s(r_i)$. The number of scenarios that not considered is determined by the entire sampled scenarios as well as the confidence level. Besides their corresponding y_s

variables are set as 1, so that constraints (8) for these scenarios are always satisfied, as M is a large number. Therefore, when we calculate the objective function, only the remaining scenarios with $y_s = 0$ are considered. Then in line with constraints (8), the objective function value equals the largest simulated taxi time $\sum_{i \in A} t^s(r_i)$ among the remaining scenarios.

Table 2: A toy instance to illustrate the CCP taxi time calculation.

s	1	2	3	4	5	6	7	8	9	10
$t^s(r_i)$	11	12	13	15	15	<i>15</i>	<i>16</i>	<i>16</i>	<u>17</u>	<u>20</u>

Here we define the objective function f of the CCP sample approximation model as the CCP taxi time, which depends on the predefined confidence level over the sampled scenarios. To clearly state the meaning of the CCP taxi time f , a toy instance is listed in Table 2, where s and $t^s(r_i)$ denote the scenario index and aircraft i taxi time under scenario w_s respectively. As shown in the table, the taxi time varies over the ten sampled scenarios. When the confidence level $1 - \alpha$ is 1, the CCP taxi time is identified with the largest taxi time value, i.e., 20. While α is 0.2, the worst two cases ($10 * (1 - 0.8) = 2$) with taxi time 20 and 17 (the numbers with underline) are not considered and the remaining largest taxi time 16 is the CCP taxi time. Similarly, the CCP taxi time equals 15 when $\alpha = 0.5$ (neglecting the scenarios with italic numbers).

4. Solutions

Building on the sample approximation CCP model, a **CCP-QPPTW** based framework is proposed to address the AGM optimisation problem with taxi time uncertainties. The structure of the proposed framework is introduced at first, and a modified sequential QPPTW algorithm (**CCP-QPPTW**) is developed in accordance with sampled multi-scenarios. To further improve the algorithm performance, a local heuristic is designed to identify the peak hours and randomly change the aircraft routing orders within the identified duration.

4.1. Framework

The overall framework of our proposed method is illustrated in Algorithm 1. As the core of our proposed framework is CCP-QPPTW, which is a modified sequential QPPTW algorithm, the aircraft need to be sorted in line 1. Following [51, 13], a sequential loop in lines 2 to 4 for all aircraft is considered to allocate the its corresponding route, while respecting the routes that have been allocated to other aircraft. The time windows list for each edge needs to be updated at each iteration.

Once the routes have been allocated to each aircraft, a local heuristic method is invoked, in which the peak hours are identified initially. The detailed identification

Algorithm 1 The overall CCP-QPPTW based framework.

- 1: Sort aircraft to natural ordering (arrival flights before departures, then by runway time)
 - 2: **for all** aircraft $i \in A$ **do**
 - 3: Building on the sample approximation CCP model, allocate a route for aircraft i using CCP-QPPTW (Algorithm 2) respecting already allocated other aircraft routes
 - 4: **end for**
 - 5: Identify peak hours set D over the scheduling horizon
 - 6: **for all** peak duration $d \in D$ **do**
 - 7: Remove allocated aircraft routes within duration d
 - 8: Reallocate aircraft routes within duration d using heuristic (Algorithm 3)
 - 9: **end for**
-

process will be described in subsection 4.3. Then within each identified peak duration, the already allocated aircraft routes are removed, and their orderings are iteratively resorted. With each aircraft orderings, the CCP-QPPTW is again applied for routes allocation. It is guaranteed that the taxi time of the finally reallocated routes is not longer than that of the original routes.

Moreover, a flowchart of the CCP-QPPTW based framework is illustrated in Figure 2 consisting of three major components: aircraft sorting, iterative CCP-QPPTW method application (Algorithm 2), and a local heuristic to address peak hours (Algorithm 3).

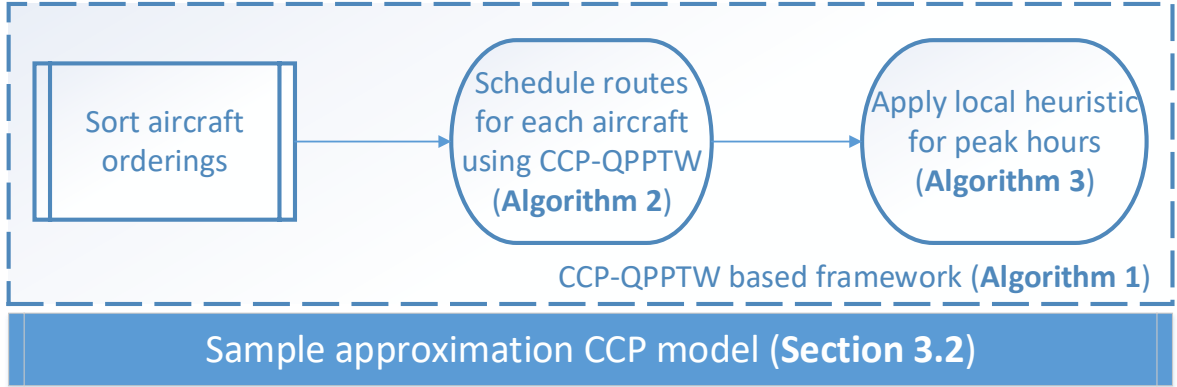


Figure 2: Flowchart of the CCP-QPPTW based framework.

4.2. CCP-QPPTW

To address the established CCP sample approximation model for AGM optimisation, one should carefully design a routing method over multiple sampled scenarios. The

Algorithm 2 The CCP-QPPTW algorithm to find the route for current aircraft.

- 1: Routes set $R = \emptyset$, minimal taxi time $tt_{i,min} = M$ for current aircraft i , selected route $r_{i,best} = \emptyset$
 - 2: **for all** scenario $w_s \in W$ **do**
 - 3: Generate conflict-free route r_s for current aircraft using QPPTW under scenario w_s with sampled fixed taxi time
 - 4: Add route r_s in R if $r_s \notin R$
 - 5: **end for**
 - 6: **for all** route $r \in R$ **do**
 - 7: Calculate CCP taxi time $tt_i(r)$ of route r over all sampled scenarios
 - 8: **if** $tt_i(r) < tt_{i,min}$ **then**
 - 9: $tt_{i,min} = tt_i(r)$
 - 10: $r_{i,best} = r$
 - 11: **end if**
 - 12: **end for**
 - 13: **for all** scenario $w_s \in W$ **do**
 - 14: Update time windows in G^s considering the best route $r_{i,best}$ for current aircraft
 - 15: **end for**
 - 16: **return** $r_{i,best}, tt_{i,min}$
-

QPPTW method is originally developed for deterministic AGM optimisation problem with fixed taxi times. The general idea of QPPTW is to allocate the aircraft routes in sequences with given aircraft orderings. For each aircraft to be allocated, the QPPTW applies a labelling algorithm to gradually extend the path from the starting node, until the ending node is found. The generated route is ensured to be conflict-free through checking the available time windows set associated with each node, and the time windows are iteratively updated when current route is determined. For more details of QPPTW, the readers are referred to [23].

SinceAs QPPTW can search optimal solutions with fixed taxi time in predefined aircraft orderings, it is promising to further extend QPPTW for our developed uncertain model. Moving QPPTW from single deterministic scenario to multiple sampled scenarios is the key motivation for the adaptation. A modified CCP-QPPTW algorithm is thus designed and the structure of CCP-QPPTW is provided in Algorithm 2.

The CCP-QPPTW algorithm consists of three parts: candidate routes generation (lines 2 to 5), routes selection (lines 6 to 12), and time windows update (lines 13 to 15). The selected route and associated taxi time are initially set as empty and a big number M , respectively. To generate possible routes for current aircraft, a conflict-free route r_s is obtained under every scenario w_s . Considering that the taxi time has been sampled as fixed value for each scenario, the QPPTW algorithm is then repeatedly used for the route allocation. Note that the QPPTW algorithm is replaceable by any other deterministic

routing methods in the proposed framework. Given the same routes could be generated under different sampled scenarios using QPPTW, the generated routes under different scenarios can only be added into the routes set R when the route is different from any existing routes in R . In the next part, the recorded route with the minimal CCP taxi time f would be selected for current aircraft. Through comparing the CCP taxi time, the aircraft route can be eventually determined. The time windows need to be updated in the third part of CCP-QPPTW. While QPPTW only updates the time windows in one deterministic graph, CCP-QPPTW executes update process over all sampled multi-scenarios, respectively.

4.3. Local heuristic

The routing solutions have been obtained using the modified CCP-QPPTW algorithm, in which the aircraft are sorted with the natural orderings, i.e., arrival flights before departures and then by runway time. It is clear that different aircraft orderings could allocate different routes, resulting in different taxi times. Thus, a local heuristic is introduced in this section to further reduce the entire taxi time via adjusting the aircraft allocation orderings.

As stated in Algorithm 1, the peak duration is identified at first for the local heuristic, and the aircraft routes will then be reallocated within each peak duration. This identification process is motivated by the trade-off between the solution space (i.e., the number of aircraft to be routed at a time) and the algorithm efficiency; only within suitable solution subspace, the heuristic designed later will have better performance. Moreover, the peak duration could include more aircraft and its corresponding potential taxi time reduction could be larger than that within peak-off duration with less aircraft.

To initiate the identification process, a time slot unit, e.g., 15 mins, is set to divide the entire routing horizon. Next, the average number of aircraft taxiing within the time slot is calculated over all sampled scenarios, since the aircraft taxi time varies over multi-scenarios due to uncertainties. The peak duration can now be defined as the divided duration whose average number of taxiing aircraft is greater than a predefined threshold.

Once the peak duration has been identified, a heuristic is proposed in Algorithm 3 to adjust the aircraft orderings within each duration, aiming to further reduce the aircraft taxi time. Denote the set of aircraft within current duration cd as A_{cd} . The taxi time of the entire aircraft set A_{cd} with natural orderings is first calculated to provide upper bound for the heuristic. For every attempt to change the aircraft orderings, the new orderings are determined by indicator ρ_i , which depends on the average waiting time for current allocated route under all scenarios, and a random indicator $\rho_{i,rand}$. The former indicator represents that the aircraft with longer waiting time is of high priority for the next round route allocation, and the latter value ensures the proposed heuristic is capable of jumping out of the local optimum. The random property of the heuristic is controlled by the equation $\sum_{i \in A_{cd}} \rho_{i,rand} = \beta \sum_{i \in A_{cd}} wt(r_{i,best})$, where $wt(r_{i,best})$ is the waiting time of

Algorithm 3 The heuristic to reduce taxi time via adjusting aircraft orderings.

- 1: Set minimal taxi time within current duration cd as $tt_{d,min} = \sum_{i \in A_{cd}} tt(r_{i,best})$
 - 2: **for all** orderings change attempt **do**
 - 3: Remove allocated routes for all aircraft $i \in A_{cd}$ and update time windows
 - 4: Randomise $\rho_{i,rand}$ for all aircraft $i \in A_{cd}$ subject to $\sum_{i \in A_{cd}} \rho_{i,rand} = \beta \sum_{i \in A_{cd}} wt(r_{i,best})$
 - 5: Calculate ordering indicator $\rho_i = wt(r_{i,best}) + \rho_{i,rand}$ for all aircraft $i \in A_{cd}$
 - 6: Resort all aircraft $i \in A_{cd}$ with descending ρ_i
 - 7: **if** new orderings found **then**
 - 8: Allocate route $\tilde{r}_{i,best}$ for all aircraft $i \in A_{cd}$ using CCP-QPPTW (Algorithm 2) respecting already allocated other aircraft routes
 - 9: **if** $\sum_{i \in A_{cd}} tt(\tilde{r}_{i,best}) < tt_{d,min}$ **then**
 - 10: $tt_{d,min} = \sum_{i \in A_{cd}} tt(\tilde{r}_{i,best})$
 - 11: $r_{i,best} = \tilde{r}_{i,best}$ for all aircraft $i \in A_{cd}$
 - 12: **end if**
 - 13: **end if**
 - 14: **end for**
 - 15: **return** updated $r_{i,best}$ for all aircraft $i \in A_{cd}$
-

route $r_{i,best}$ (Here the waiting time is referred to the time spent on the taxiways when the aircraft has to stop and wait to avoid conflicts with other aircraft; this includes the 2-minute waits for a landing or departing aircraft to clear the runway), and β is an input parameter. The larger β is, the high randomness of the heuristic has. After the aircraft within certain peak duration are resorted, the existing routes as well as occupied time windows are removed for the next step, i.e., aircraft routes reallocation.

If the resorted orderings have not been found before, the CCP-QPPTW algorithm is invoked with the new orderings, generating a set of new routes for the all aircraft in A_{cd} . If the reallocated routes have less entire taxi time than the upper bound taxi time $tt_{d,min}$, the new routes are selected and the upper bound $tt_{d,min}$ is updated as well. Eventually, the heuristic returns the updated routes with the smallest taxi time. Note the number of attempts to resort the aircraft and generate new routes is limited by a fixed threshold number or a maximal heuristic running time.

5. Experimental results and discussions

5.1. Experimental setup

Manchester Airport (MAN), the third busiest airport in the UK, is selected to test the performance of our proposed model and algorithm. As illustrated in Figure 3, MAN has two runways, three terminals and 148 aircraft gates. Typically MAN operates in

two working modes: for the single runway mode, both of the arrival and departure flights use runway 05L/23R; for twin runway mode, arrival aircraft land on 05L/23R and departures take off using 05R/23L. Note the twin mode only operates in daytime peak hours. To establish the undirected graph for AGM modelling, the layout of MAN is

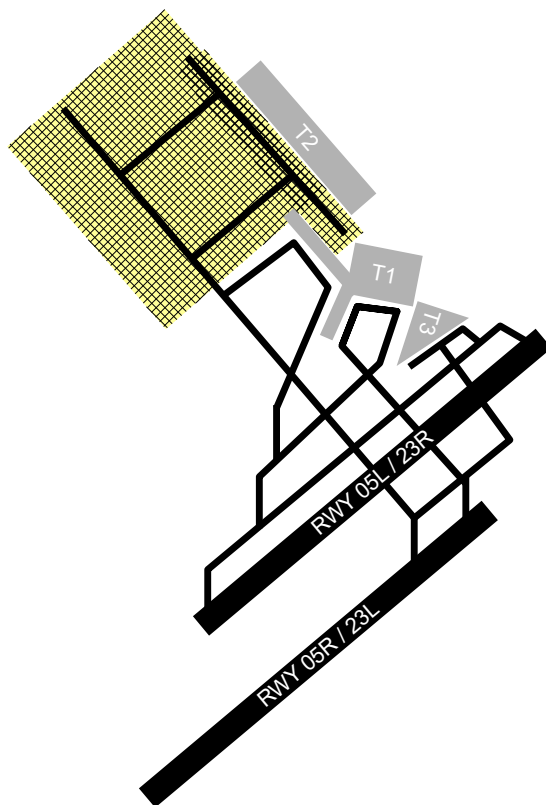


Figure 3: The layout of Manchester Airport, including major taxiways.

preprocessed with the GM Tools developed in our previous work [13] (available at <http://hdl.handle.net/1893/30962>), and is constructed using 698 nodes and 739 edges. Moreover, a set of realistic aircraft movement data for one day operations is provided by MAN. We have also generated extra sets of movement data through replicating original data and modifying the scheduled runway time. In doing so, a set of scenarios with different numbers of aircraft movements have been generated, in which the traffic levels vary from low density (0.8 times of the original movements), the realistic density, to the high density (1.3 times). The number of aircraft movements for each density level is listed in Table 3.

In order to address the taxi time uncertainties at MAN, an adaptive fuzzy rule-based system is introduced to describe the taxi time based on realistic aircraft movement data [13]. The upper/lower bounds of the taxi times $T_e = \{[tl_1, tu_1], [tl_2, tu_2], \dots\}$ for

Table 3: Number of aircraft movements in different airport traffic levels.

Density	0.8	0.9	1.0	1.1	1.2	1.3
Number of movements	516	575	640	701	790	851

each edge $e \in E$ can be determined using the historical data. Moreover, a nominal value tn_i within each taxi time range $[tl_i, tu_i](i = 1, 2, \dots)$ is obtained as well. Specifically, the collected taxi times range from 4.7 to 130.9 seconds, and the average nominal taxi time for each edge is 40.9 seconds. We will use these values as inputs for the simulations later.

To conduct the AGM simulations at MAN and test the performance of the proposed model and method, a simulation platform developed in [13] is adopted in this work. The motivation for introducing the simulation platform is to reflect airport operational conditions as realistically as possible. The platform is implemented in Java and follows several rules and simplifications. First, the simulated aircraft on the platform always respect the minimum safety distance, and is required to stop to avoid conflict with other aircraft. This ensures that scheduled routes always satisfy the operational constraints during the simulation. Second, the position of aircraft is updated iteratively with 0.1 second increment. Third, all edges crossing the runway are considered to be occupied for 2 mins prior to scheduled runway time for arrivals and 1 min after runway time for departures. Fourth, to present the taxi time uncertainties on edges, the taxi time for certain edge is randomly generated within the taxi time range, which is provided as inputs. Moreover, to test the algorithm performance on different situations, parameter $\delta \in [0, 0.5]$ is introduced to control the taxi time uncertainty levels. Specifically, the taxi time for each edge is uniformly sampled within the range $[tn_i - 2\delta(tn_i - tl_i), tn_i + 2\delta(tu_i - tn_i)](i = 1, 2, \dots)$. When δ equals 0.5, the taxi time has maximal uncertainty and the time is selected in $[tl_i, tu_i](i = 1, 2, \dots)$. Five scenarios with different uncertainty levels are thus generated via adjusting the value of $\delta(\delta = 0.1, 0.2, 0.3, 0.4, 0.5)$. For each simulation scenario, δ is assigned to all aircraft with the same value. All the simulations are conducted on Queen Mary’s Apocrita high-performance computing facility (<http://doi.org/10.5281/zenodo.438045>). A more detailed description of the simulation tool, and validation of its underlying models, can be found in [13].

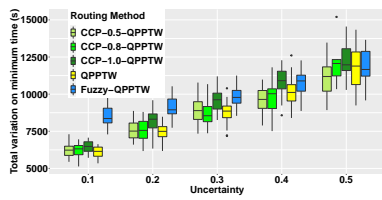
5.2. Results and discussions

The CCP based routing algorithms developed in this work are denoted as CCP- ϕ -QPPTW ($\phi = 0.5, 0.8, 1.0$), where ϕ indicates the confidence level. Here the confidence level acts as a parameter for CCP-QPPTW, and different setting of α only influences which routes would be scheduled, while all the aircraft operational constraints are satisfied in the simulations. We generated 30 scenarios to employ the CCP-QPPTW routing algorithm. Note these scenarios are different from those to evaluate the allocated routes in the comparison simulations. For each aircraft, we use QPPTW to generate a path with

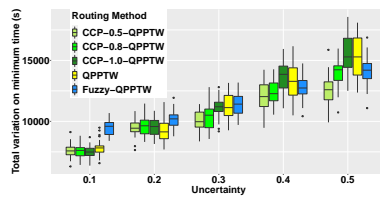
the quickest taxi time in the multi-scenarios respectively, and for each generated path, we further calculate its required taxi time for the route in every scenario. Then the candidate route with the least CCP taxi time is selected. The selection of 30 scenarios, i.e., samples, are further discussed and justified later. To validate the performance of proposed CCP-QPPTW algorithms with three different confidence levels, two other routing methods, the deterministic QPPTW [23] and Fuzzy-QPPTW [13], are compared in different airport traffic densities and taxi time uncertainties. Note the local heuristic, which is part of the proposed CCP-QPPTW based framework ~~based routing algorithm~~, is not activated by default for fair comparisons between the CCP-QPPTW and other routing algorithms. For each combination of the traffic density and taxi time uncertainty, the allocated routes for each algorithm is repetitively simulated for 30 times (the same 30 seeds are generated for each routing algorithm). Therefore we entirely have $5 \times 5 \times 6 \times 30 = 4500$ runs (5 algorithms, 5 taxi time uncertainty levels, 6 traffic density levels, and 30 random runs) for the comparison simulations.

Four performance indicators are introduced to comprehensively evaluate the routing method performances. The first indicator is the total variations of simulated times on the minimum times. Here minimum times correspond to the time to complete the shortest route (allocated by Dijkstra's algorithm [53]) without considering aircraft conflicts, which can be regarded as a lower bound for the taxi time. The second indicator is the total of variations of simulated times on routed times, in which routed times refer to the expected times following the allocated routes by each respective routing method. The number of aircraft delayed by more than 30 seconds over the routed times and the number of aircraft stops due to conflicts are also recorded as the performance indicators.

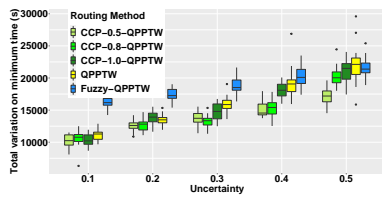
The comparison results are reported in Figures 4 to 7. Overall when the confidence level for CCP model is set as 0.5, the CCP-0.5-QPPTW has evident advantages in terms of the total variations on minimum times in Figure 4, number of aircraft delayed in Figure 6 and number of aircraft stops in Figure 7. ~~When the confidence level of the CCP-QPPTW increases, it means that we expect to allocate more conservative routes under taxi time uncertainties, so that the aircraft would detour to avoid potential conflicts even though there is a relatively lower possibility for conflicts. Consequently, the detour could reduce the simulated taxi time under the scenario where the conflict would indeed happen if the detour is not executed. However, for the majority of the simulated scenarios, the simulated taxi time would increase as the conflict does not occur due to a low possibility. Therefore the CCP-QPPTW algorithm degrades with the increase of the CCP confidence level. As the increase of the confidence level, the overall performance of CCP-QPPTW method becomes worse.~~ Note the results of CCP-0.5-QPPTW have worse exceptions under a lower uncertainty level (see Figure 4(f) and Figure 6(f) with 0.3 uncertainty level), where the taxi time uncertainty ranges are relatively small. This is because the results of CCP-0.8/1.0-QPPTW are not that conservative and may provide slightly better results with lower uncertainty levels. While the uncertainty level is greater than 0.3, the



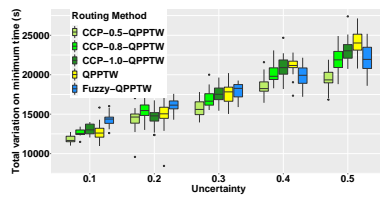
(a) Density = 0.8



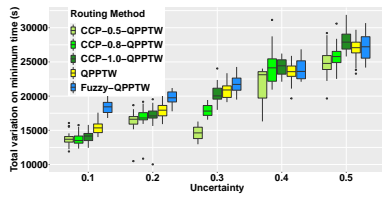
(b) Density = 0.9



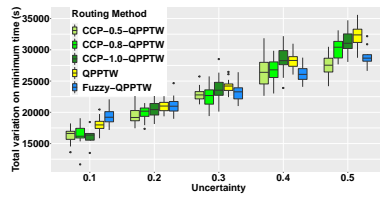
(c) Density = 1.0



(d) Density = 1.1

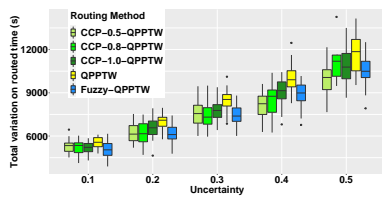


(e) Density = 1.2

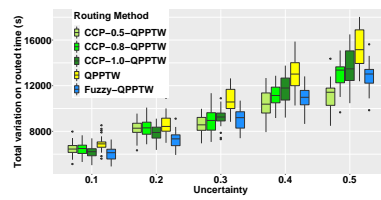


(f) Density = 1.3

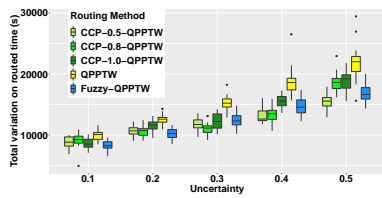
Figure 4: Total variations of simulated times on minimum times for each traffic density. Each group of five bars has the same level of uncertainty.



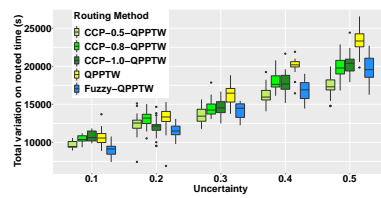
(a) Density = 0.8



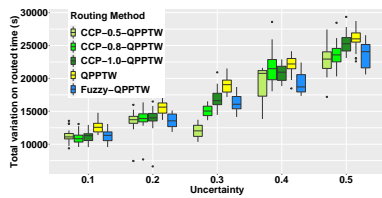
(b) Density = 0.9



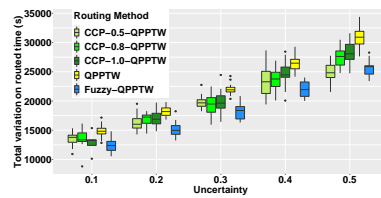
(c) Density = 1.0



(d) Density = 1.1

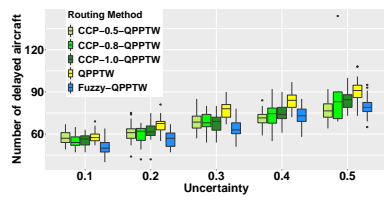


(e) Density = 1.2

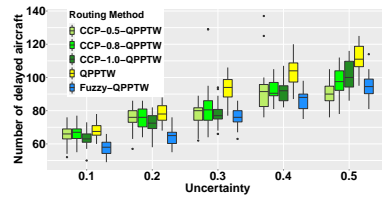


(f) Density = 1.3

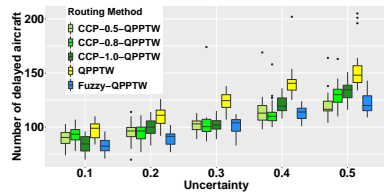
Figure 5: Total variations of simulated times on routed times for each traffic density. Each group of five bars has the same level of uncertainty.



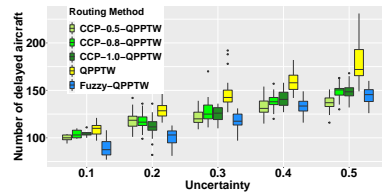
(a) Density = 0.8



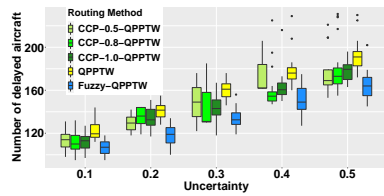
(b) Density = 0.9



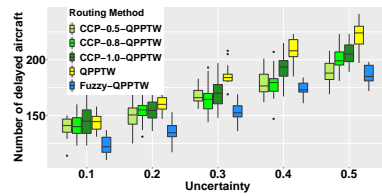
(c) Density = 1.0



(d) Density = 1.1

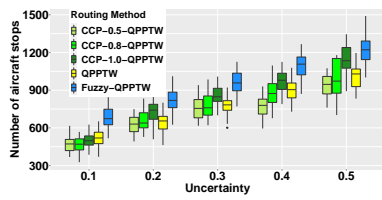


(e) Density = 1.2

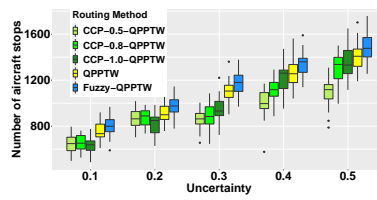


(f) Density = 1.3

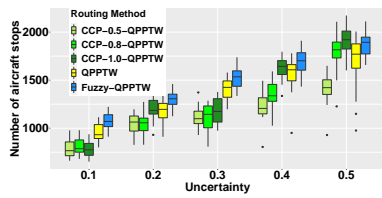
Figure 6: Number of aircraft delayed (per the simulations) by more than 30 seconds over the routed times as uncertainty increases at each traffic density. Each group of five bars has the same level of uncertainty.



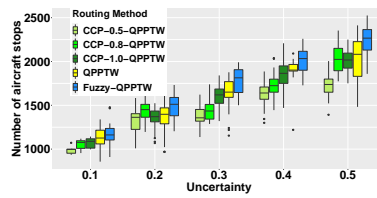
(a) Density = 0.8



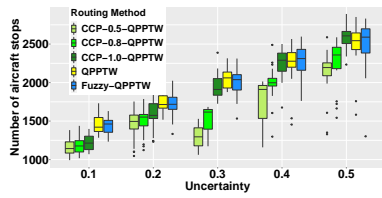
(b) Density = 0.9



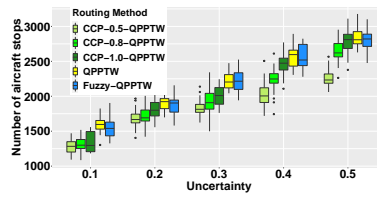
(c) Density = 1.0



(d) Density = 1.1



(e) Density = 1.2



(f) Density = 1.3

Figure 7: Number of aircraft stops (per the simulations) due to conflicts at each traffic density. Each group of five bars has the same level of uncertainty.

results of CCP-0.5-QPPTW are always better than that of CCP-0.8/1.0-QPPTW in terms of the total taxi times and number of stops.

Since QPPTW is originally designed for the deterministic routing problem, it is unsurprising to see QPPTW has comparative and even best performance in terms of all indicators with lower densities and taxi time uncertainty levels. However, when these two parameters increase, other methods that can address the uncertainty have clear advantages over QPPTW.

In contrast, Fuzzy-QPPTW has a relatively poor performance with lower densities and taxi time uncertainty levels, especially in terms of the total variations on minimum times and number of aircraft stops. This is logical; Fuzzy-QPPTW considers the worst possibilities when selecting the routing path, therefore leading to over-conservative results with less complicated environments. However, even if the airport considers more aircraft and has larger taxi time uncertainties, CCP-0.5-QPPTW has overall better performance than Fuzzy-QPPTW, especially for the total variations on minimum times and number of aircraft stops. Note that Fuzzy-QPPTW indeed has slightly better performance when considering the number of aircraft delayed. This is because Fuzzy-QPPTW partially aims to reduce actual taxi time variations on predicted routed times; it has considered possible delays to the routed time due to conflicts, and consequently a larger taxi time including stops is predicted to ensure the route has fewer number of delayed aircraft. Therefore it is understandable that allocated routes of Fuzzy-QPPTW has the least number of delayed aircraft compared to other routing methods. This observation is also consistent with the results for the total variation times in Figures 4 and 5. As shown in Figure 4(f), the average simulated routing taxi times of CCP-0.5-QPPTW is less than that of Fuzzy-QPPTW; while in Figure 5(f), the Fuzzy-QPPTW has evident less variations on routed times, i.e., the predicted routing times, indicating the routed times of Fuzzy-QPPTW is clearly larger than that of CCP-0.5-QPPTW. These longer routes for Fuzzy-QPPTW are, ironically, also more prone to conflicts that only add a small delay, so the aircraft stops more often, albeit the stops are very short. This is clearly undesirable from a fuel efficiency point of view.

Table 4: Average simulated taxi times in different traffic densities. CCP- ϕ is short for CCP- ϕ -QPPTW.

Traffic density	Taxi time (s)					Taxi time difference with QPPTW (%)			
	QPPTW	Fuzzy	CCP-0.5	CCP-0.8	CCP-1.0	Fuzzy	CCP-0.5	CCP-0.8	CCP-1.0
0.8	179105	180314	178953	178651	179770	0.68	-0.08	-0.25	0.37
0.9	191724	191929	190686	191135	191818	0.11	-0.54	-0.31	0.05
1.0	217475	219951	214829	215498	216776	1.14	-1.22	-0.91	-0.32
1.1	241673	241976	239523	241089	241482	0.14	-0.89	-0.24	-0.08
1.2	264664	266091	260001	263572	264445	0.54	-1.76	-0.41	-0.08
1.3	287514	286940	284581	285278	285933	-0.20	-1.02	-0.78	-0.55
Overall	230359	231200	228096	229204	230037	0.40	-0.92	-0.48	-0.10

To further compare the routing methods on AGM optimisation with taxi time uncer-

Table 5: Total taxi distances for allocated routes in different traffic densities. $\text{CCP-}\phi$ is short for $\text{CCP-}\phi\text{-QPPTW}$.

Traffic density	Taxi distance (km)					Taxi distance difference with QPPTW (/%)			
	QPPTW	Fuzzy	CCP-0.5	CCP-0.8	CCP-1.0	Fuzzy	CCP-0.5	CCP-0.8	CCP-1.0
0.8	5323.2	5372.6	5346.2	5352.6	5357.9	0.93	0.43	0.55	0.65
0.9	5567.1	5612.2	5587.2	5593.9	5604.1	0.81	0.36	0.48	0.67
1.0	6215.3	6354.4	6245.3	6246.5	6258.9	2.24	0.48	0.50	0.70
1.1	6930.5	6990.0	6953.2	6955.9	6970.9	0.86	0.33	0.37	0.58
1.2	7588.3	7685.5	7612.4	7615.3	7626.7	1.28	0.32	0.36	0.51
1.3	8156.6	8222.2	8178.4	8182.7	8194.4	0.80	0.27	0.32	0.46
Overall	6630.2	6706.2	6653.8	6657.8	6668.8	1.15	0.36	0.43	0.60

tainties, the average simulated taxi times and the total taxi distances for allocated routes in different traffic densities are listed in Tables 4 and 5. As shown in Table 4, CCP-0.5-QPPTW achieves 0.92% taxi time decrease on average compared to the deterministic QPPTW method, and the performance of CCP-QPPTW gradually becomes worse when the confidence level increases. As for Fuzzy-QPPTW, although it shortens the taxi time compared to QPPTW under 1.3 traffic density, its average taxi time over all traffic densities has a 0.40% increase. The over-conservative strategy applied in Fuzzy-QPPTW can be also illustrated in terms of the total taxi distances in Table 5. Compared to QPPTW, both of the CCP-QPPTW and Fuzzy-QPPTW methods allocate longer routes to address the taxi time uncertainties. This is because QPPTW aims to minimise the deterministic total taxi times, corresponding to the shortest taxi distances. However, these routes may not necessarily lead to the minimum simulated total taxi times when uncertainties are introduced (it indicates that simulated actual taxi time over one edge could change). Under such situations, although the allocated taxi distance remains, the allocated routes could experience more conflicts and have to stop and wait, leading to longer simulated total taxi times. On the other hand, the Fuzzy-QPPTW and CCP-QPPTW methods have considered the uncertainties in advance, and could detour to avoid potential conflicts in advance, thus leading to longer taxi distances and reduced taxi times. However, the Fuzzy-QPPTW increases the taxi distances over 1%, while CCP-0.5-QPPTW chooses less conservative routes with an average 0.36% distance increase. Meanwhile, the conservative degree of the CCP-QPPTW method can be adjusted by improving the confidence level, and the routes distance difference with QPPTW would increase from 0.36% to 0.60%.

To compare the computational efficiency of various routing methods, we report the average run time for each traffic density over five allocation methods in Table 6. Clearly QPPTW has the shortest run time since it does not address the taxi time uncertainties. On the other hand, Fuzzy-QPPTW generates taxi time fuzzy functions for each each, and the functions are further combined for fuzzy operations, leading to a very large number of object creation and destruction operations and their associated overhead. This means that Fuzzy-QPPTW has the worst computational efficiency for the routes allo-

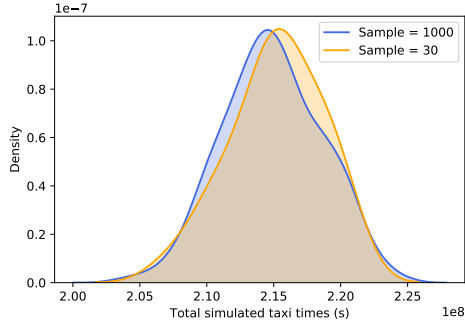
Table 6: Run time comparisons over different route allocation methods. CCP- ϕ is short for CCP- ϕ -QPPTW.

Traffic density	Run time (s)				
	QPPTW	Fuzzy	CCP-0.5	CCP-0.8	CCP-1.0
0.8	6.5	534.7	201.8	220.9	211.8
0.9	7.1	670.7	213.4	267.8	213.2
1.0	9.8	812.8	244.7	270.0	225.5
1.1	9.9	1494.3	264.1	301.4	244.4
1.2	10.3	1794.2	305.5	305.1	367.3
1.3	11.3	2186.2	336.5	389.4	354.7
Overall	9.7	1248.8	261.0	292.4	269.5

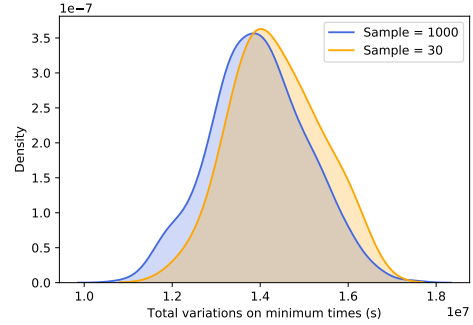
cation. While CCP-QPPTW has better performance than Fuzzy-QPPTW, its average run time is much less than the Fuzzy-QPPTW computational time, and the variations of the confidence level do not heavily influence the run time. In conclusion, the proposed QPPTW-CCP method can better address the taxi time uncertainties with higher computational efficiency in comparison with Fuzzy-QPPTW.

The number of samples (i.e., scenarios) may also impact the accuracy and efficiency of the proposed framework. Ideally a larger sampling number better represents the approximation accuracy, while we have to strike a balance between the approximation and computational efficiency. Here, we set the number of samples as 30 in line with a rule of thumb [54]. To further justify the selection of the sampling number and demonstrate the approximation accuracy, we fix the traffic density and uncertainty level as 1.0 and 0.3 respectively, and simulated 1000 scenarios using 1000 different random seeds. The density distributions of simulated total taxi times and four performance indicators are illustrated in Figure 8(a) to (e). As shown in the figure, the simulated results between 30 and 1000 samples (i.e., scenarios) have similar density distributions in terms of the taxi times and four performance indicators. We also compared the mean values of these five indicators over 30 and 1000 samples, and their differences are 0.07%, 2.59%, 2.80%, 0.59% and 1.93%, respectively. Moreover, the selection of 30 samples is justified from the statistic view. We introduce the two-sample Kolmogorov–Smirnov test [55, 56], which is one of the most useful and general non-parametric statistic methods, to check whether the distribution functions between two sample groups differ. For each indicator, the null hypothesis is that the two samples between 30 and 1000 simulated scenarios are from the same distributions. Using the two-sample Kolmogorov-Smirnov test, the p -value for each indicator is 0.8106, 0.2102, 0.4220, 0.9219, 0.7932, respectively. All of them are greater than the 0.05 significance level, thus the null hypothesis cannot be rejected. Therefore 30 samples are generated to represent the scenario uncertainties.

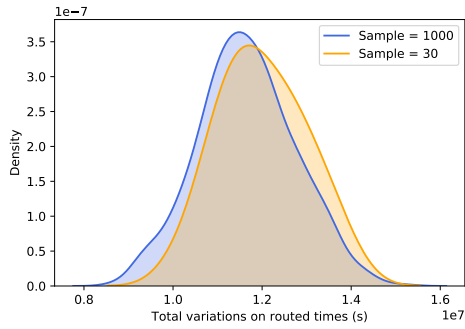
Finally we consider the effect of the local heuristic in the proposed routing framework. The parameters of the local heuristic are given as follows: time slot unit 15 mins, $\beta = 2$, orderings change attempt 10, maximal heuristic run time 500 seconds. (Preliminary



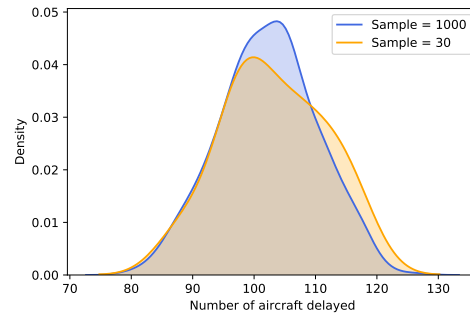
(a) Total simulated taxi times (s)



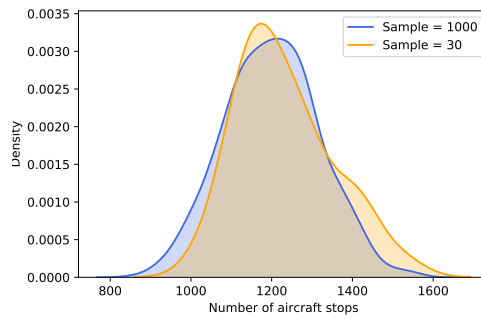
(b) Total variations on minimum times (s)



(c) Total variations on routed times (s)



(d) Number of aircraft delayed



(e) Number of aircraft stops

Figure 8: Distributions of the simulated taxi times and four performance indicators under 1000 and 30 simulated scenarios. The airport traffic density and uncertainty level are set as 1.0 and 0.3 respectively.

simulations indicate that the local heuristic performance does not significantly vary from different parameter settings, therefore we only report the results in default parameters). The comparison results with and without heuristics are illustrated in Figures 9 and 10, where the confidence level is set as 0.5 and CCP-QPPTW-H/CCP-QPPTW denotes for the CCP-QPPTW method with/without the local heuristic. Note the local heuristic reaches the maximal run time for each case, and the allocated routes are repetitively simulated for 30 times.

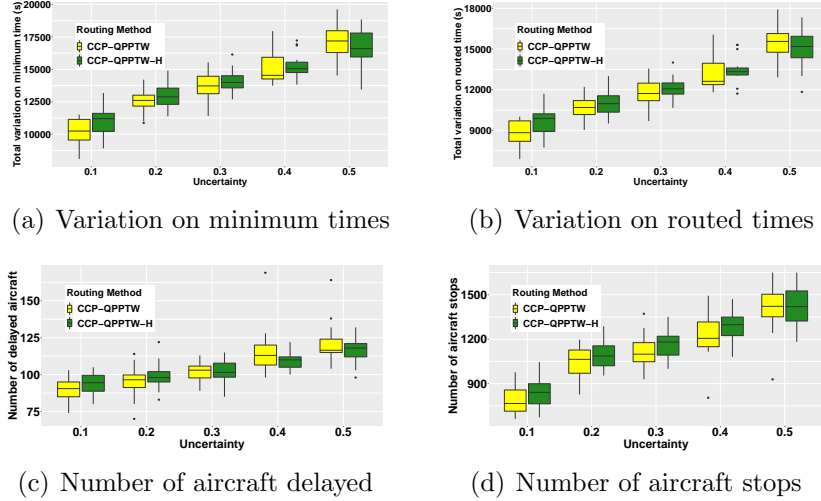


Figure 9: Heuristic comparisons with traffic density 1.0. The confidence level is set as 0.5.

As seen in Figure 9 (density 1.0) and Figure 10 (density 1.3), CCP-QPPTW with local heuristic does not effectively increase the performance in terms of all indicators. Especially for the simulations with lower uncertainties, the local heuristic even leads to worse results compared to the CCP-QPPTW without local heuristic. It is true the CCP-QPPTW-H can realise better results with the additional heuristic over the same scenarios applied to select aircraft routes by the CCP-QPPTW method. However, different scenarios are simulated to evaluate the allocated aircraft routes, which could lead to increased total taxi times. Although applying more scenarios to the CCP-QPPTW/CCP-QPPTW-H could better approximate the uncertainties and improve the robustness of the proposed algorithm, the allocated aircraft routes could still have slightly worse performances under simulated scenarios. We recommend to employ the local search heuristic within a short scheduling horizon. Typically, the taxi times can be estimated more accurately within a shorter horizon, so that the updated routes using the local heuristic have a higher possibility to reduce the total taxi times. Overall, the proposed local heuristic, which resorts the aircraft orderings, has limited contributions to address the uncertainties and reduce the taxi time. This finding is also consistent with the results in [23, 20] that the heuristics to reorder the aircraft do not have huge impact on the deterministic AGM optimisation.

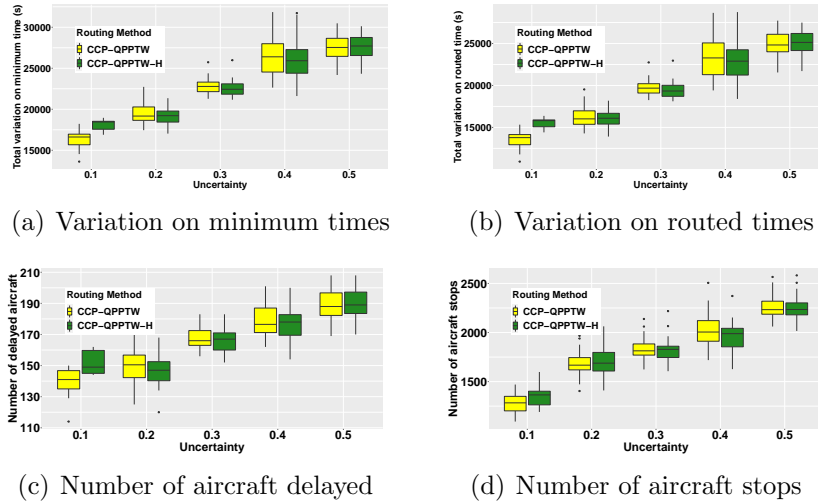


Figure 10: Heuristic comparisons with traffic density 1.3. The confidence level is set as 0.5.

6. Conclusions

To address the aircraft taxi time uncertainties, a chance-constrained programming (CCP) model for airport ground movement (AGM) optimisation has been developed in this work. Knowing that the taxi time is typically difficult to be exactly predicted, we generate a set of scenarios to approximately sample the taxi time distributions, in which the uncertainties can be well represented. Building upon the sampled multi-scenarios, a modified sequential quickest routing method with a local heuristic (CCP-QPPTW) is then designed to solve the proposed model. In doing so, the scheduled aircraft routes can be generated considering different conservative degrees, i.e., the confidence level in the CCP-QPPTW algorithm, thus avoiding over-conservative routes and reducing total taxi times. Besides, the proposed method is computationally efficient compared to the state-of-the-art algorithm, e.g., the Fuzzy-QPPTW. Using the benchmark at Manchester Airport, extensive simulations are conducted to compare the proposed CCP-QPPTW routing method with the state-of-the-art routing methods. The results indicate that CCP-QPPTW with confidence level 0.5 outperforms other algorithms in terms of the average simulated taxi times. Besides, significantly fewer number of aircraft stops has been achieved by the CCP-QPPTW, implying that the allocated routes would probably save much fuel consumption at the same time as stop-and-go has been identified as one of the main sources towards increased fuel burn [57]. However, the local heuristic which can resort the aircraft orderings has limited contributions to reduce the taxi time.

Future research on AGM optimisation with taxi time uncertainties may be oriented in [threerwo](#) directions. First, the objective function in this study minimises the total taxi time, while other objectives, e.g., fuel consumption and emissions, are also important. Therefore, multi-objective optimisation for uncertain AGM may be taken into considera-

tion for the future research. Second, to further address the uncertain AGM optimisation, it is promising to combine the proposed CCP-QPPTW and reactive real-time routing methods [19]. Third, all aircraft have successfully scheduled routes respecting operational constraints in our simulations, while at certain extreme peak hours in practice, some of the aircraft may not be able to allocate routes in time. Thus how to schedule aircraft taxiing routes to minimise the delay at peak hours deserves to be further investigated.

Acknowledgements

This work was funded by the UK Engineering and Physical Sciences Research Council [grants EP/N029577/2, EP/N029496/2, and EP/N029356/1] - TRANSIT project, <https://www.transitproject.co.uk>.

References

- [1] International Air Transport Association, “20 year passenger forecast,” <https://www.iata.org/en/publications/store/20-year-passenger-forecast/>, accessed February, 2020.
- [2] —, “Restarting aviation following COVID-19,” <https://www.iata.org/en/programs/covid-19-resources-guidelines/#tab-3>, accessed June, 2020.
- [3] —, “International air transport association annual review 2019,” <https://www.iata.org/en/publications/annual-review/>, accessed February, 2020.
- [4] European Commission, “Airport capacity and quality,” https://ec.europa.eu/transport/modes/air/airports/airport_capacity_and_quality_en, accessed February, 2020.
- [5] J. Chen, M. Weiszer, P. Stewart, and M. Shabani, “Toward a more realistic, cost-effective, and greener ground movement through active routing—Part I: Optimal speed profile generation,” *IEEE Transactions on Intelligent Transportation Systems*, vol. 17, no. 5, pp. 1196–1209, 2015.
- [6] J. A. Atkin, E. K. Burke, J. S. Greenwood, and D. Reeson, “Hybrid metaheuristics to aid runway scheduling at london heathrow airport,” *Transportation Science*, vol. 41, no. 1, pp. 90–106, 2007.
- [7] U. Benlic, E. K. Burke, and J. R. Woodward, “Breakout local search for the multi-objective gate allocation problem,” *Computers & Operations Research*, vol. 78, pp. 80–93, 2017.

- [8] M. Bagamanova and M. M. Mota, “A multi-objective optimization with a delay-aware component for airport stand allocation,” *Journal of Air Transport Management*, vol. 83, p. 101757, 2020.
- [9] —, “Reducing airport environmental footprint using a disruption-aware stand assignment approach,” *Transportation Research Part D: Transport and Environment*, vol. 89, p. 102634, 2020.
- [10] E. D. Ganev, “Electric drives for electric green taxiing systems: Examining and evaluating the electric drive system,” *IEEE Electrification Magazine*, vol. 5, no. 4, pp. 10–24, 2017.
- [11] J. A. Atkin, E. K. Burke, and S. Ravizza, “The airport ground movement problem: Past and current research and future directions,” in *Proceedings of the 4th international conference on research in air transportation (ICRAT), Budapest, Hungary, 2010*, pp. 131–138.
- [12] M. Weiszer, J. Chen, and G. Locatelli, “An integrated optimisation approach to airport ground operations to foster sustainability in the aviation sector,” *Applied Energy*, vol. 157, pp. 567–582, 2015.
- [13] A. E. Brownlee, M. Weiszer, J. Chen, S. Ravizza, J. R. Woodward, and E. K. Burke, “A fuzzy approach to addressing uncertainty in airport ground movement optimisation,” *Transportation Research Part C: Emerging Technologies*, vol. 92, pp. 150–175, 2018.
- [14] J. Koeners and R. Rademaker, “Creating a simulation environment to analyze benefits of real-time taxi flow optimization using actual data,” in *AIAA Modeling and Simulation Technologies Conference*, 2011, p. 6372.
- [15] H. Lee and H. Balakrishnan, “Fast-time simulations of Detroit Airport operations for evaluating performance in the presence of uncertainties,” in *IEEE/AIAA 31st Digital Avionics Systems Conference (DASC)*. IEEE, 2012, pp. 4E2–1.
- [16] X. Wang, A. E. Brownlee, J. R. Woodward, M. Weiszer, M. Mahfouf, and J. Chen, “Aircraft taxi time prediction: Feature importance and their implications,” *Transportation Research Part C: Emerging Technologies*, vol. 124, p. 102892, 2021.
- [17] P. C. Roling and H. G. Visser, “Optimal airport surface traffic planning using mixed-integer linear programming,” *International Journal of Aerospace Engineering*, vol. 2008, 2008.
- [18] P. Roling, “Airport surface traffic planning optimization: a case study of Amsterdam Airport Schiphol,” in *9th AIAA Aviation Technology, Integration, and Operations*

Conference (ATIO) and Aircraft Noise and Emissions Reduction Symposium (AN-ERS), 2009, p. 7079.

- [19] C. Evertse and H. Visser, “Real-time airport surface movement planning: Minimizing aircraft emissions,” *Transportation Research Part C: Emerging Technologies*, vol. 79, pp. 224–241, 2017.
- [20] A. E. Brownlee, J. R. Woodward, M. Weiszner, and J. Chen, “A rolling window with genetic algorithm approach to sorting aircraft for automated taxi routing,” in *Proceedings of the Genetic and Evolutionary Computation Conference*, 2018, pp. 1207–1213.
- [21] X. Zou, P. Cheng, W. Liu, N. Cheng, and J. Zhang, “A two-stage taxi scheduling strategy at airports with multiple independent runways,” *Transportation Research Part C: Emerging Technologies*, vol. 95, pp. 165–184, 2018.
- [22] P. Scala, M. M. Mota, C.-L. Wu, and D. Delahaye, “An optimization–simulation closed-loop feedback framework for modeling the airport capacity management problem under uncertainty,” *Transportation Research Part C: Emerging Technologies*, vol. 124, p. 102937, 2021.
- [23] S. Ravizza, J. A. Atkin, and E. K. Burke, “A more realistic approach for airport ground movement optimisation with stand holding,” *Journal of Scheduling*, vol. 17, no. 5, pp. 507–520, 2014.
- [24] A. Charnes and W. W. Cooper, “Chance-constrained programming,” *Management Science*, vol. 6, no. 1, pp. 73–79, 1959.
- [25] J. Luedtke and S. Ahmed, “A sample approximation approach for optimization with probabilistic constraints,” *SIAM Journal on Optimization*, vol. 19, no. 2, pp. 674–699, 2008.
- [26] X. Wang and Y. Ning, “Uncertain chance-constrained programming model for project scheduling problem,” *Journal of the Operational Research Society*, vol. 69, no. 3, pp. 384–391, 2018.
- [27] S. Zandkarimkhani, H. Mina, M. Biuki, and K. Govindan, “A chance constrained fuzzy goal programming approach for perishable pharmaceutical supply chain network design,” *Annals of Operations Research*, pp. 1–28, 2020.
- [28] D. Pozo and J. Contreras, “A chance-constrained unit commitment with an nk security criterion and significant wind generation,” *IEEE Transactions on Power systems*, vol. 28, no. 3, pp. 2842–2851, 2012.

- [29] Z. Nadeem, N. Javaid, A. W. Malik, and S. Iqbal, “Scheduling appliances with ga, tlbo, fa, osr and their hybrids using chance constrained optimization for smart homes,” *Energies*, vol. 11, no. 4, p. 888, 2018.
- [30] C. Han, Y. Gu, G. Wu, and X. Wang, “Simulated annealing based heuristic for multiple agile satellites scheduling under cloud coverage uncertainty,” *arXiv preprint arXiv:2003.08363*, 2020.
- [31] J.-B. Gotteland and N. Durand, “Genetic algorithms applied to airport ground traffic optimization,” in *Congress on Evolutionary Computation*, vol. 1. IEEE, 2003, pp. 544–551.
- [32] J. García, A. Berlanga, J. M. Molina, and J. R. Casar, “Optimization of airport ground operations integrating genetic and dynamic flow management algorithms,” *AI Communications*, vol. 18, no. 2, pp. 143–164, 2005.
- [33] G. Clare and A. G. Richards, “Optimization of taxiway routing and runway scheduling,” *IEEE Transactions on Intelligent Transportation Systems*, vol. 12, no. 4, pp. 1000–1013, 2011.
- [34] R. Mori, “Aircraft ground-taxiing model for congested airport using cellular automata,” *IEEE Transactions on Intelligent Transportation Systems*, vol. 14, no. 1, pp. 180–188, 2013.
- [35] S. Ravizza, J. Chen, J. A. Atkin, E. K. Burke, and P. Stewart, “The trade-off between taxi time and fuel consumption in airport ground movement,” *Public Transport*, vol. 5, no. 1-2, pp. 25–40, 2013.
- [36] M. Weiszer, J. Chen, S. Ravizza, J. Atkin, and P. Stewart, “A heuristic approach to greener airport ground movement,” in *2014 IEEE congress on evolutionary computation (CEC)*. IEEE, 2014, pp. 3280–3286.
- [37] H. Khadilkar and H. Balakrishnan, “Network congestion control of airport surface operations,” *Journal of Guidance, Control, and Dynamics*, vol. 37, no. 3, pp. 933–940, 2014.
- [38] M. Lobato, F. Carvalho, A. S. Pereira, and A. Agra, “Airport ground movement,” in *Operations Research and Big Data*. Springer, 2015, pp. 89–96.
- [39] T. Zhang, M. Ding, B. Wang, and Q. Chen, “Conflict-free time-based trajectory planning for aircraft taxi automation with refined taxiway modeling,” *Journal of Advanced Transportation*, vol. 50, no. 3, pp. 326–347, 2016.

- [40] T. Zhang, M. Ding, and H. Zuo, “Improved approach for time-based taxi trajectory planning towards conflict-free, efficient and fluent airport ground movement,” *IET Intelligent Transport Systems*, vol. 12, no. 10, pp. 1360–1368, 2018.
- [41] L. Yang, S. Yin, K. Han, J. Haddad, and M. Hu, “Fundamental diagrams of airport surface traffic: Models and applications,” *Transportation research part B: Methodological*, vol. 106, pp. 29–51, 2017.
- [42] L. Adacher, M. Flamini, and E. Romano, “Airport ground movement problem: minimization of delay and pollution emission,” *IEEE Transactions on Intelligent Transportation Systems*, vol. 19, no. 12, pp. 3830–3839, 2018.
- [43] Y. Dabachine, B. Bouikhalene, and A. Balouki, “Bidirectional search algorithm for airport ground movement,” in *International Arab Conference on Information Technology (ACIT)*. IEEE, 2018, pp. 1–9.
- [44] M. Weiszer, J. Chen, P. Stewart, and X. Zhang, “Preference-based evolutionary algorithm for airport surface operations,” *Transportation Research Part C: Emerging Technologies*, vol. 91, pp. 296–316, 2018.
- [45] M. Zhang, Q. Huang, S. Liu, and H. Li, “Multi-objective optimization of aircraft taxiing on the airport surface with consideration to taxiing conflicts and the airport environment,” *Sustainability*, vol. 11, no. 23, p. 6728, 2019.
- [46] M. Weiszer, E. K. Burke, and J. Chen, “Multi-objective routing and scheduling for airport ground movement,” *Transportation Research Part C: Emerging Technologies*, vol. 119, p. 102734, 2020.
- [47] J. C. N. Climaco and E. Q. V. Martins, “A bicriterion shortest path algorithm,” *European Journal of Operational Research*, vol. 11, no. 4, pp. 399–404, 1982.
- [48] J. Chen and M. Mahfouf, “A population adaptive based immune algorithm for solving multi-objective optimization problems,” in *International Conference on Artificial Immune Systems*. Springer, 2006, pp. 280–293.
- [49] J. Chen, S. Ravizza, J. A. D. Atkin, and P. Stewart, “On the Utilisation of Fuzzy Rule-Based Systems for Taxi Time Estimations at Airports,” in *11th Workshop on Algorithmic Approaches for Transportation Modelling, Optimization, and Systems*, 2011, pp. 134–145. [Online]. Available: <http://drops.dagstuhl.de/opus/volltexte/2011/3273/>
- [50] S. Ravizza, J. A. D. Atkin, M. H. Maathuis, and E. K. Burke, “A combined statistical approach and ground movement model for improving taxi time estimations at airports,” *Journal of the Operational Research*

Society, vol. 64, no. 9, pp. 1347–1360, Sep. 2013. [Online]. Available: <https://www.tandfonline.com/doi/full/10.1057/jors.2012.123>

- [51] S. Ravizza, J. Chen, J. A. Atkin, P. Stewart, and E. K. Burke, “Aircraft taxi time prediction: comparisons and insights,” *Applied Soft Computing*, vol. 14, pp. 397–406, 2014.
- [52] O. Lordan, J. M. Sallan, and M. Valenzuela-Arroyo, “Forecasting of taxi times: The case of barcelona-el prat airport,” *Journal of Air Transport Management*, vol. 56, pp. 118–122, 2016.
- [53] E. W. Dijkstra, “A note on two problems in connexion with graphs,” *Numerische Mathematik*, vol. 1, no. 1, pp. 269–271, 1959.
- [54] R. V. Hogg, E. A. Tanis, and D. L. Zimmerman, *Probability and statistical inference*. Macmillan New York, 1977, vol. 993.
- [55] F. J. Massey Jr, “The kolmogorov-smirnov test for goodness of fit,” *Journal of the American statistical Association*, vol. 46, no. 253, pp. 68–78, 1951.
- [56] Y. Xiao, “A fast algorithm for two-dimensional kolmogorov–smirnov two sample tests,” *Computational Statistics & Data Analysis*, vol. 105, pp. 53–58, 2017.
- [57] H. Khadilkar and H. Balakrishnan, “Estimation of aircraft taxi fuel burn using flight data recorder archives,” *Transportation Research Part D: Transport and Environment*, vol. 17, no. 7, pp. 532–537, 2012.