

*Review*

## Surgical Treatment of Epiretinal Membrane

Ryo Matoba, and Yuki Morizane\*

*Department of Ophthalmology, Okayama University Graduate School of Medicine,  
Dentistry and Pharmaceutical Sciences, Okayama 700-8558, Japan*

Epiretinal membrane (ERM) is a common retinal disease characterized by cellular proliferation and metaplasia that lead to the formation of a pathological fibrocellular membrane immediately superjacent to the inner retinal surface. The vast majority of ERMs are considered idiopathic. However, ERM formation can result from various primary intraocular diseases, including retinal breaks and detachment, retinal vascular diseases, and vitreoretinal inflammatory conditions. Although ERMs are generally asymptomatic or cause mild metamorphosis and/or a modest decrease in visual acuity, some can cause severe macular distortion and macular edema, resulting in significantly impaired function. Surgical removal of ERM is the only treatment, and improvements in vitrectomy systems have enabled less invasive treatment. However, there are currently no standardized criteria for ERM surgery, and the indications for surgery are determined from the patient's subjective symptoms. Another problem with ERM surgery is that not all patients show satisfactory postoperative recovery of visual function. Thus, further research is needed to determine the criteria for ERM surgery and methods to improve the postoperative prognosis.

**Key words:** epiretinal membrane, vitrectomy, optical coherence tomography, internal limiting membrane, lamellar macular hole

Epiretinal membrane (ERM) is a common retinal disease characterized by cellular proliferation and metaplasia that lead to the formation of a pathological fibrocellular membrane immediately superjacent to the inner retinal surface (Figs. 1A and 1B). The terms epimacular membrane, macular pucker, cellophane maculopathy, and preretinal macular fibrosis have been used to describe this condition [1-7].

Of late, technology related to ERM surgery, including imaging analyses and surgical devices, has made rapid progress. In this review, we provide an overview of and recent insights into the surgical management of ERM.

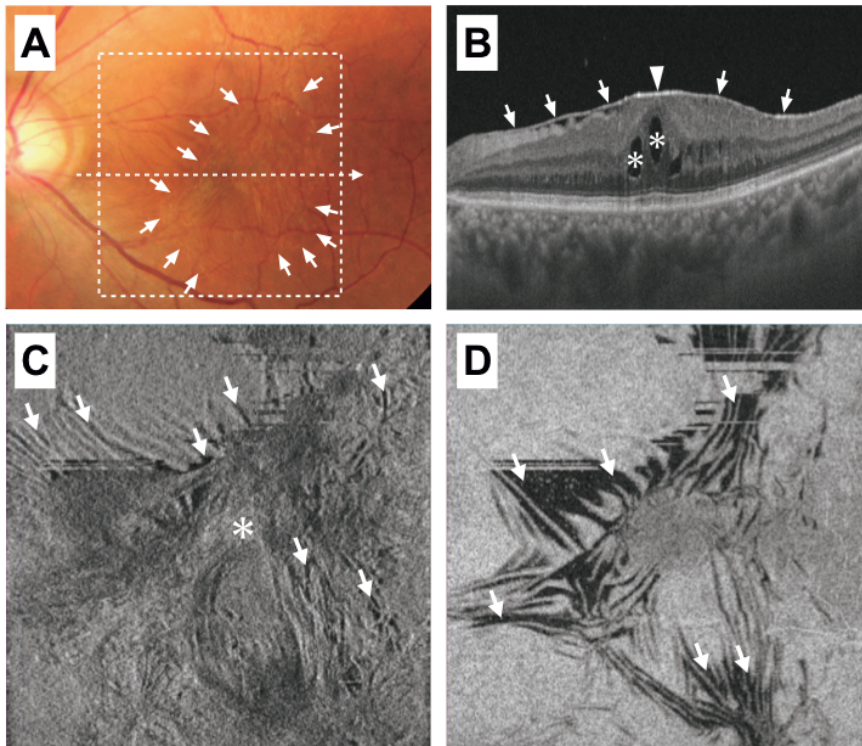
### Epidemiology and Pathogenesis of ERM

The vast majority of ERM cases are considered idiopathic and unassociated with other systemic or ocular diseases. They are found most frequently after 50 years of age, and several large clinical studies have reported a clinical prevalence of 7% to 11.8% [8,9]. Most ERMs are asymptomatic, with many being extrafoveal in location. There appears to be no significant gender predilection, and ERM is bilateral in 20-30% of cases. Posterior vitreous detachment (PVD) is present in up to 90% of clinically significant ERMs, with spontaneous posterior hyaloid separation believed to be the causative factor. The Blue Mountains Eye Study reported second eye involvement over a 5-year period in 13.5% of patients [10].

Received March 3, 2021; accepted April 26, 2021.

\*Corresponding author. Phone: +81-86-235-7297; Fax: +81-86-222-5059  
E-mail: moriza-y@okayama-u.ac.jp (Y. Morizane)

Conflict of Interest Disclosures: No potential conflict of interest relevant to this article was reported.



**Fig. 1** Epiretinal membrane (ERM) with retinal folds. **A**, Representative color photograph of ERM. The *arrows* indicate the area of ERM. The *dotted arrow* indicates the scan direction of the B-scan optical coherence tomography (OCT) image shown in (B). The *dotted square* shows the scan area of the en face OCT images shown in (C) and (D); **B**, Horizontal B-scan OCT image. The hyperreflective line (*arrows*) on the retinal surface shows ERM. The foveal pit is absent (*arrowhead*), and several cysts are present in the retinal layers (*asterisks*); **C**, En face OCT image at the internal limiting membrane (ILM) level. ERM can be seen as a hyperreflective membrane-like structure (*asterisk*). The *arrows* indicate the retinal folds caused by traction from ERM; **D**, En face OCT image obtained 30  $\mu\text{m}$  below ILM. The black linear structures (*arrows*) indicate the retinal folds.

With regard to the mechanism underlying idiopathic ERM formation, there are several possible theories. Some researchers have suggested that defects in the internal limiting membrane (ILM) created by PVD allow retinal glial cells (Müller cells and astrocytes) to migrate to the inner surface of the retina, where they form an idiopathic ERM [11, 12]. Others suggest that, as a result of vitreoschisis and vitreoretinal traction caused by anomalous PVD, hyalocytes in the cortical vitreous remnants in the macular region are stimulated by various cytokines, such as basic fibroblast growth factor and nerve growth factor, after which they proliferate and differentiate into myofibroblasts, leading to idiopathic ERM formation [13-16]. However, the pathogenesis of ERM is not fully understood.

Nonidiopathic (secondary) ERMs have been associated with several vitreoretinal diseases, including retinal vascular diseases (*e.g.*, diabetic and hypertensive retinopathy, venous occlusive disease, angiomas, telangiectasis, *etc.*), vitreoretinal inflammatory conditions (*e.g.*, infectious or noninfectious uveitis), postoperative and post-traumatic states, inherited and congenital posterior segment anomalies and syndromes, intraocular tumors, and retinal breaks and detachment [17-41].

The pathogenesis of secondary ERMs differs from that of idiopathic ERMs because of the central role played by inflammation, which induces cellular proliferation and transdifferentiation to promote ERM formation and contraction. This mechanism is evidenced by an increase in the expression of cytokines such as interleukin-6 and 8 and monocyte chemoattractant protein-1 [42]. These cytokines are known to support inflammatory cells identified in secondary ERMs [43, 44].

ERMs that occur following retinal breaks and detachment are thought to have a pathogenic mechanism in addition to inflammation; RPE cells gain access to the vitreous cavity through the retinal break and settle on the macular surface, subsequently developing into a membrane [45]. These membranes are architecturally enhanced by the presence of fibroblasts and macrophages, which are stimulated in part by the inflammation associated with vitreous hemorrhage and/or surgical repair.

### Visual Function in ERM

ERMs are usually asymptomatic or cause mild

symptoms of metamorphopsia and/or a modest decrease in visual acuity. Among patients with idiopathic ERMs, two-thirds exhibit a visual acuity of 20/30 or better, while 85% display a visual acuity of 20/70 or better [7,46]. A visual acuity of 20/200 or lower may be observed in a small number of patients (approximately 5%) [47-49]. A few of these membranes can cause macular distortion and edema to the extent that clinicians recommend their removal via pars plana vitrectomy.

One of the most common symptoms in ERM patients is metamorphopsia, which is a subjective symptom characterized by distortion of viewed objects. In patients with ERM, metamorphopsia is thought to result from the displacement of photoreceptors due to retinal traction and/or visual cortex reorganization as well as perceptual adjustment in response to disrupted sensory input from the retina [50-56]. Metamorphopsia is quantitatively evaluated using M-CHARTS (Inami Co., Tokyo). The severity of distorted vision in normal eyes is 0 in both the vertical and horizontal directions. In general, difficulties in daily life start to occur when the severity of distorted vision exceeds 0.5, and ERM surgery might be indicated at this point [57].

### Imaging Analyses of ERM

Optical coherence tomography (OCT) plays an important role in the clinical assessment of eyes with ERMs. OCT can detect ERMs and can also assist in topographic localization, identification of vitreoretinal relationships (such as vitreomacular traction syndrome), detection of lamellar or full-thickness macular holes and retinal folds, and quantitation of macular thickness and macular volume (Figs. 1B-1D) [58]. In addition to its value in clinical characterization, OCT has therapeutic value in preoperative planning. The co-existence of a macular hole, the presence of a bilaminar ERM, or knowledge of substantive macular edema may lead the surgeon to modify his or her approach. OCT also shows considerable prognostic value in terms of counseling patients regarding the visual potential of the affected eye. Finally, it can assist in postoperative management via assessments of the macular thickness and membrane regrowth.

### Treatment of ERM

Surgical excision is the only available treatment option for ERM. The aim of surgical intervention is to improve traction-induced visual disturbance via removal of ERM, which relieves the macular traction. In recent years, the increased resolution of OCT has enabled the early detection of asymptomatic ERMs [58-60]. However, no objective or quantitative criteria for indicating surgical removal of ERM have been established. Therefore, it is essential to conduct a thorough risk/benefit analysis and carefully judge whether surgery is indicated based on the results of subjective visual function tests as well as the patient's lifestyle and environment.

### Surgical Procedure

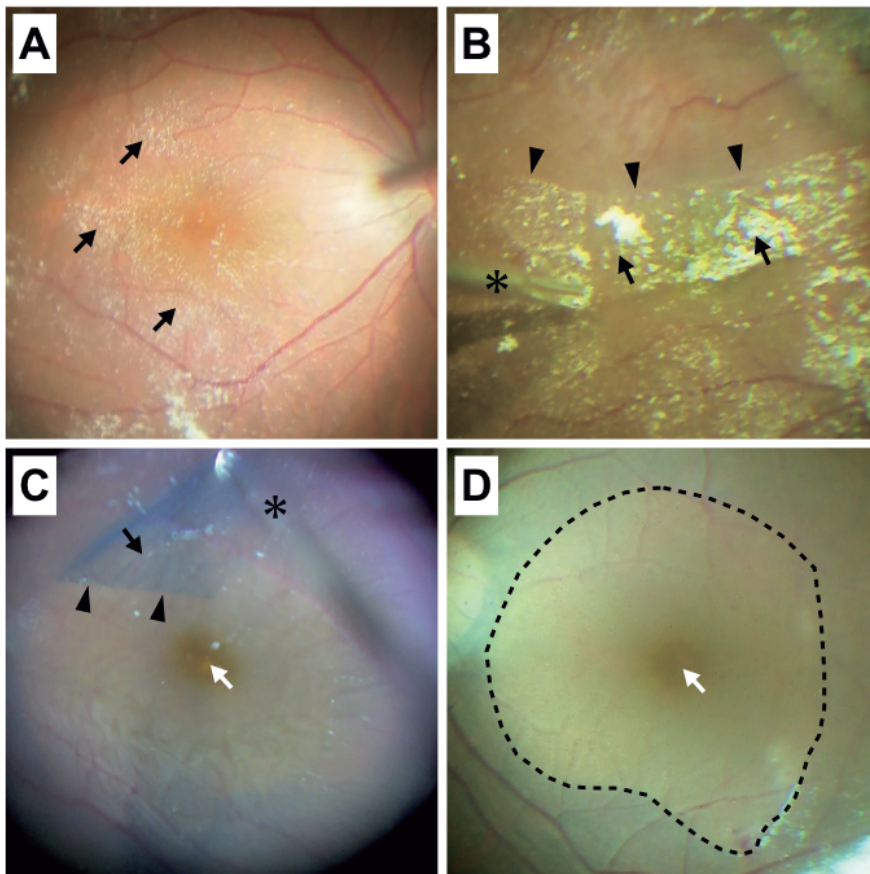
**Surgical setting.** In recent years, several advancements have facilitated safe and relatively fast vitrectomy; these include the availability of better microincision vitrectomy surgery (MIVS) systems, development of small-gauge forceps and chandelier illumination, improvements in light-emitting diodes and other light sources, and availability of microscope systems with wide fields of vision. When performed using the new MIVS system, vitrectomy uses three or four ports. The size of the vitrectomy device can be either 20-, 23-, 25-, or 27-gauge. The 25-gauge system is the principal vitrectomy system in international use, although the 27-gauge system is gradually seeing wider adoption. In recent years, digitally assisted vitrectomy surgery has become available, and it has become possible to perform macular surgery, including surgery for ERM, at higher magnifications and lower illumination intensities. If cataracts are clinically present before ERM surgery and/or the patient is aged over 50 years and his/her cataracts are expected to progress after surgery, the cataract surgery system should be prepared such that cataract surgery and intraocular lens (IOL) implantation can be performed simultaneously with vitrectomy.

**Visualization of vitreous, induction of posterior vitreous detachment, and core and peripheral vitrectomy.** After core vitrectomy, the vitreous body is visualized by steroid particles (triamcinolone acetate) to confirm the occurrence of PVD [61,62]. PVD occurs spontaneously in approximately 70% of cases of

ERM [63]. However, when it has not occurred, it is induced by aspiration of the vitreous body. The adhesion between the vitreous body and ERM is sometimes extremely strong; therefore, when the vitreous body is aspirated, care must be taken to avoid macular damage from excessive traction. After PVD, core and peripheral vitrectomy is performed. Any vitreous body remaining in the area surrounding the trocar can lead to an increased risk of retinal tears due to traction from the vitreous body when instruments are inserted or extracted. Therefore, it is safer to excise the part of the vitreous body surrounding the trocar. In phakic eyes, the lens should not be allowed to come in contact with the vitreous cutter. The combined use of chandelier illumination and a wide-angle viewing system can facilitate safe and efficient surgery with a wide field of vision.

**Visualization and peeling of ERM.** It is generally difficult to distinguish the boundary between ERM and the retina; therefore, triamcinolone acetonide and vital

dyes are used to enhance ERM visualization so that safe and complete ERM peeling can be achieved. Commonly used vital dyes include trypan blue, indocyanine green (ICG), and brilliant blue G (BBG) [64-72]. Triamcinolone acetonide adheres to ERM but not to ILM (Figs. 2A and 2B), whereas trypan blue passes through cell membranes and stains the cells, with greater affinity for ERM than for ILM. Therefore, use of these 2 visualizing agents enables positive visualization of ERM. In contrast, ICG and BBG stain ILM but not ERM, enabling negative staining of ERM. Appropriate use of these agents based on an understanding of their properties allows for effective visualization of the relevant structures during ERM surgery. Removal of ILM, the scaffold for myofibroblast proliferation, enables complete removal of ERM and has been suggested to reduce the risk of ERM recurrence [73-77]. If ILM peeling is performed at the same time as ERM surgery, retinal staining with ICG and BBG should be performed multiple times before and after ERM and ILM peeling to



**Fig. 2** Images captured during epiretinal membrane (ERM) surgery. **A**, ERM is visualized with triamcinolone acetonide (arrows); **B**, ERM visualized with triamcinolone acetonide (arrows) is peeled with end-grabbing forceps (asterisk). The arrowheads indicate the edge of the peeled ERM; **C**, The internal limiting membrane (ILM) visualized with brilliant blue G (BBG) (black arrow) around the fovea (white arrow) is peeled with end-grabbing forceps (asterisk). The arrowheads indicate the edge of the peeled ILM; **D**, The region without BBG staining (dotted area) is the ILM-peeled area. The arrow indicates the fovea.

enable timely assessment of the presence of any residual ERM or ILM (Figs. 2C and 2D) [78-80]. Although it was recently reported that trypan blue and BBG show lower cytotoxicity than does ICG, any of these staining agents can be cytotoxic if used at too high a concentration [80-82]. Thus, the appropriate concentrations must be used, and the agents must be sufficiently washed out after use.

If the boundary between ERM and the retina is clear, ERM peeling can be performed by directly grasping the ERM margin using end-grabbing forceps. Initiation of ERM peeling in the space between ERM and the retina reduces the risk of retinal damage during surgery. The site at which ERM peeling is initiated can be determined using either preoperative OCT or a surgical microscope in combination with integrated intraoperative OCT. If the boundary between ERM and the retina as well as any space between ERM and the retina is not clear, ERM peeling should be preferably initiated at the temporal inferior area of the macula, not in the area of the papillomacular bundle or any site in close proximity to the macula; this avoids damage to the central and lower parts of the field of vision.

The appropriate area of ERM peeling has not been established. Hirano *et al.* reported that ERM and ILM peeling completely resolved retinal traction caused by ERM, and that the traction outside the parafoveal area, a 3-mm-diameter circle centered at the fovea, did not affect the postoperative improvement in visual function [58]. Kanzaki *et al.* reported that ERM formation did not affect visual function when the area of ILM peeling was larger than the parafoveal area [83]. In consideration of these reports, a 3-mm-diameter circle centered at the fovea may be the minimum area required for ERM and ILM peeling.

### Complications of Surgery

**Posterior retinal breaks, macular hole, and retinal hemorrhage.** When peeling ERM and/or ILM, retinal traction can cause posterior retinal breaks, macular holes, and retinal hemorrhages. For a minor posterior retinal break, gas tamponade with subsequent monitoring for progression is sufficient. In contrast, if the retinal break is distant from the macula, or if a major retinal break is likely to cause postoperative retinal detachment, it is necessary to perform laser treatment around the break, followed by gas tamponade. If a

macular hole forms, ILM peeling and gas tamponade are performed. Retinal hemorrhage is generally self-limiting and does not require treatment; however, it can be stopped if necessary by increasing the irrigation pressure or applying diathermy.

**Intraoperative lens damage.** Devices that are inserted into phakic eyes, including trocars, vitreous cutters, light pipes, and end-grabbing forceps, rarely come in contact with the lens and damage it. In case these devices touch the lens, ERM peeling is still feasible if the damage to the lens is minor. However, lensectomy is required if the damage results in reduced retinal visibility. Depending on the condition of the lens capsule, IOL can be simultaneously implanted. If the lens capsule is severely damaged, IOL is implanted with sutured fixation or sutureless intrascleral fixation, generally as a secondary treatment. Postoperative progression of cataracts frequently occurs when surgery is completed in the phakic state. Secondary cataract surgery is performed in these cases, but these surgeries are somewhat difficult because of a higher probability of posterior capsule rupture.

**Postoperative cataracts.** Postoperative nuclear sclerotic cataracts develop in 10-70% of phakic eyes after completion of lens-sparing surgery [73,84-88]. The probability of this complication occurring in an earlier postoperative phase is higher in older patients; thus, patients aged over 50 and/or those with pre-existing nuclear sclerosis are treated with phacoemulsification and IOL implantation simultaneously with ERM surgery [89,90]. In most cases, phacoemulsification is performed first, followed by vitrectomy. IOL implantation is performed before or after vitrectomy depending on the surgeon's preference.

**Peripheral retinal tear and postoperative retinal detachment.** Peripheral retinal tears are found in up to 6% of cases [63,73,86,87,91-94], but the frequency of this complication appears to be lower when MIVS is applied [95,96]. Peripheral retinal tears often develop in association with surgical equipment insertion, which can cause traction from the vitreous body in the vitreous base. Therefore, peripheral retinal tears can be prevented by excising the vitreous body surrounding the trocar. In patients who show lattice degeneration and strong adherence between the vitreous body and retina, excessive aspiration of the vitreous body during PVD induction should be avoided for the prevention of peripheral retinal tears. A search for retinal tears

should be carefully performed using a wide-angle viewing system and scleral indentation to ensure that no peripheral retinal tears are overlooked. If peripheral retinal tears are found, the vitreous body surrounding them should be shaved; in addition, laser photocoagulation or transscleral cryotherapy should be applied to the retinal tears. Fluid–air or fluid–gas exchange can then be performed to complete the surgery. Postoperative retinal detachment occurs in up to 14% of patients undergoing vitrectomy surgery, and this complication is usually associated with overlooked peripheral tears or later contraction of the vitreous base [85, 86, 92, 93, 97]. If postoperative retinal detachment occurs, retinal detachment repair surgery should be performed as soon as possible, depending on the state of the retinal detachment.

#### **Other complications associated with ERM peeling.**

Other complications associated with ERM peeling have also been reported, including endophthalmitis, retinal phototoxicity, choroidal neovascularization, and visual field defects. Acute-onset endophthalmitis is a serious complication with an incidence rate of 0.030–0.070% [98–100]. In general, thorough sterilization of equipment as well as the use of disposable items and topical antibiotics are encouraged. Additionally, an important practice to prevent endophthalmitis when performing MIVS is to suture the scleral incision site if the self-sealing of the scleral incision is judged to be insufficient at the completion of surgery [101].

**ERM recurrence.** Recurrence of epiretinal tissue formation after vitrectomy is observed in less than 20% of patients and rarely has a significant effect on vision [73, 76, 86, 87, 92, 102]. ERM recurrence is thought to be caused by the residual vitreous cortex and/or insufficient ERM removal. Additionally, the current body of evidence suggests that ILM provides a scaffold for ERM recurrence [102]. In their 2017 meta-analysis, Chang *et al.* reported that vitrectomy with ILM peeling is associated with lower rates of ERM recurrence [103], although the proportion of cases with vision-limiting recurrent ERM is small. If ERM recurrence reduces visual function, ERM peeling is repeated.

**Controversies related to ILM peeling.** There are several reasons that ILM peeling should be avoided. One is that ILM is the basal lamina connected to the end feet of the Müller cells; thus, ILM peeling can cause mechanical damage to the retinal tissues, which could potentially lead to dissociation of the nerve fiber layer

and inner retinal dimpling. Other reasons are that ILM peeling can affect Müller cell function, and that the stains used to visualize ILM have cytotoxic effects [104–110].

Several meta-analyses to investigate the safety and efficacy of ILM peeling have recently been published [103, 111, 112]. However, it remains unclear whether ILM peeling should be routinely performed for patients with ERM; to clarify this point, it will be necessary to monitor a larger number of patients for extended periods and conduct prospective randomized clinical trials.

### **Postoperative Changes in Visual Function**

**Visual acuity.** In most patients, the macular surface architecture is greatly improved immediately after surgery, although a short-term decrease in the visual acuity to below the preoperative level is not uncommon. While immediate and significant improvements in the visual acuity may occur, it often takes 4 to 6 weeks for the patient's vision to return to the preoperative level, and subsequent improvement continues over the following 3 to 6 months. It has been reported that 60–90% of patients show a visual acuity improvement of two or more lines by 6 to 12 months after surgery [84, 86, 87, 92, 97, 113–116].

Numerous studies have been conducted to elucidate the factors associated with visual acuity prognosis. Previously reported preoperative factors associated with better postoperative visual acuity include better preoperative visual acuity [113, 114, 117–122], greater inner nuclear layer (INL) thickness [123], greater photoreceptor outer segment length [121], ellipsoid zone integrity [113, 118, 119, 124–126], and lesser central foveal thickness [120, 123, 125, 127].

**Metamorphopsia.** Metamorphopsia is alleviated by ERM peeling, but it is not completely cured by the procedure, probably because the photoreceptor cell arrangement does not revert to its exact original state following ERM peeling. According to a report by Kinoshita *et al.*, metamorphopsia is present at approximately 50% and 30% of the preoperative level at 3 months and 1 year after surgery, respectively [114]. In particular, the INL thickness has been reported to be significantly associated with metamorphopsia, with a thicker INL being associated with more severe metamorphopsia both preoperatively and postoperatively [128–130].

## A Peculiar Type of ERM: Lamellar Hole-Associated Epiretinal Proliferation (LHEP)

LHEP is a membranous tissue seen on the surface of the retina and was first reported by Witkin *et al.* [131]. LHEP is mainly observed in patients with macular hole and degenerative lamellar macular hole (LMH), which is a type of LMH that involves very little retinal traction in its pathology [59, 132, 133]. The term “LHEP” was coined by Pang *et al.*, and the condition has also been termed “dense non-tractional ERM” and “atypical epiretinal tissue” [133-135]. Recently, it was reported that the presence of LHEP is not exclusive to LMH [136], and Hubschman *et al.* proposed to delete the prefix “lamellar-hole associated” from LHEP and term the membrane “epiretinal proliferation” [137]. However, LHEP remains the best-known and most frequently used term.

Unlike idiopathic ERMs, LHEPs are yellow because of the presence of carotenoids [138]. In addition, LHEPs appear thick with moderate reflectivity in OCT [133], whereas idiopathic ERMs are thin and highly reflective. Although LHEPs are highly extensible and can be readily peeled off the retinal surface, complete removal is difficult because they are closely associated with retinal tissue at the LMH and macular hole margins [134, 135, 139-141], a feature not shared with idiopathic ERMs.

Histological studies have shown that LHEPs contain cells that are positive for specific markers of glial cells or hyalocytes. These cells are therefore considered to be the major components of LHEPs [139, 142-148]. On the other hand, LHEPs do not stain with  $\alpha$ -smooth muscle actin antibody, suggesting that they do not have contractile properties [139, 146].

Treatment of degenerative LMH leads to challenges regarding the approach to LHEPs [132]. Until now, degenerative LMH has been treated by both ILM and LHEP removal. However, it has been reported that visual acuity improvements following surgery are insufficient, and postoperative macular holes develop in 16% of cases [134, 149, 150]. Recently, Shiraga *et al.* proposed a new surgical technique to treat LHEP associated with degenerative LMH, wherein LHEP is embedded into the macular aperture such that it fills the retinal gap [140, 151, 152]. The same group reported postoperative improvements in the macular contour and visual acuity [140, 151, 152]. Similar to the

inverted ILM flap technique, the mechanism of action of the LHEP embedding technique is thought to be restoration of the macular structure by glial cells within LHEP [153, 154]. Although the results thus far are promising, further research on this treatment approach for degenerative LMH is necessary.

## Conclusions

The efficacy of surgical removal of ERMs by vitrectomy for improving visual function was first reported by Machemer in 1978 [155]. In the more than 40 years since, progress in OCT technology and vitrectomy systems has resulted in detailed elucidation of the ERM pathology and enabled less invasive treatment. However, clear criteria indicating surgery remain to be established, and indications for surgery are, therefore, still based on the patient's subjective symptoms along with the physician's judgment. Another problem is that not all patients show satisfactory recovery of visual function after surgery. Further research regarding the criteria for indicating ERM surgery and the factors associated with the visual prognosis is necessary.

## References

1. Roth AM and Foos RY: Surface wrinkling retinopathy in eyes enucleated at autopsy. *Trans Am Acad Ophthalmol Otolaryngol* (1971) 75: 1047-1058.
2. François J and Verbraeken H: Relationship between the drainage of the subretinal fluid in retinal detachment surgery and the appearance of macular pucker. *Ophthalmologica* (1979) 179: 111-114.
3. Tanenbaum HL, Schepens CL, Elzeneiny I and Freeman HM: Macular pucker following retinal detachment surgery. *Arch Ophthalmol* (Chicago, Ill 1960) (1970) 83: 286-293.
4. Tanenbaum HL, Schepens CL, Elzeneiny I and Freeman HM: Macular pucker following retinal surgery. A biomicroscopic study. *Can J Ophthalmol* (1969) 4: 20-23.
5. Jaffe NS: Macular retinopathy after separation of vitreoretinal adherence. *Arch Ophthalmol* (Chicago, Ill 1960) (1967) 78: 585-591.
6. Maumenee AE: Further Advances in the Study of the Macula. *Arch Ophthalmol* (1967) 78: 151-165.
7. Wise GN: Preretinal macular fibrosis. (An analysis of 90 cases). *Trans Ophthalmol Soc U K* (1972) 92: 131-140.
8. Mitchell P, Smith W, Chey T, Wang JJ and Chang A: Prevalence and associations of epiretinal membranes. The Blue Mountains Eye Study, Australia. *Ophthalmology* (1997) 104: 1033-1040.
9. Klein R, Klein BE, Wang Q and Moss SE: The epidemiology of epiretinal membranes. *Trans Am Ophthalmol Soc* (1994) 92: 403-425; discussion 425-430.
10. Fraser-Bell S, Guzowski M, Rochtchina E, Wang JJ and Mitchell P: Five-year cumulative incidence and progression of epiretinal membranes: the Blue Mountains Eye Study. *Ophthalmology* (2003) 110: 34-40.
11. Foos RY: Vitreoretinal junction-simple epiretinal membranes. *Albrecht Von Graefes Arch Klin Exp Ophthalmol* (1974) 189: 231-250.
12. Foos RY: Vitreoretinal junction; epiretinal membranes and vitreous.

- Invest Ophthalmol Vis Sci (1977) 16: 416-422.
13. Stevenson W, Prospero Ponce CM, Agarwal DR, Gelman R and Christoforidis JB: Epiretinal membrane: optical coherence tomography-based diagnosis and classification. *Clin Ophthalmol* (2016) 10: 527-534.
  14. Sebag J: Anomalous posterior vitreous detachment: a unifying concept in vitreo-retinal disease. *Graefes Arch Clin Exp Ophthalmol* (2004) 242: 690-698.
  15. Hikichi T, Takahashi M, Trempe CL and Schepens CL: Relationship between premacular cortical vitreous defects and idiopathic premacular fibrosis. *Retina* (1995) 15: 413-416.
  16. Joshi M, Agrawal S and Christoforidis JB: Inflammatory mechanisms of idiopathic epiretinal membrane formation. *Mediators Inflamm* (2013) 2013: 192582.
  17. Appiah AP and Hirose T: Secondary causes of premacular fibrosis. *Ophthalmology* (1989) 96: 389-392.
  18. Wise GN: Macular changes after venous obstruction. *AMA Arch Ophthalmol* (1957) 58: 544-557.
  19. Tang S, Le-Ruppert KC and Gabel VP: Proliferation and activation of vascular endothelial cells in epiretinal membranes from patients with proliferative diabetic retinopathy. An immunohistochemistry and clinical study. *Ger J Ophthalmol* (1994) 3: 131-136.
  20. Barry PJ, Hiscott PS, Grierson I, Marshall J and McLeod D: Reparative epiretinal fibrosis after diabetic vitrectomy. *Trans Ophthalmol Soc U K* (1985) 104(Pt 3): 285-296.
  21. Carney MD and Jampol LM: Epiretinal membranes in sickle cell retinopathy. *Arch Ophthalmol* (1987) 105: 214-217.
  22. Laatikainen L, Immonen I and Summanen P: Peripheral retinal angioma-like lesion and macular pucker. *Am J Ophthalmol* (1989) 108: 563-566.
  23. McDonald HR, Schatz H, Johnson RN, Abrams GW, Brown GC, Brucker AJ, Han DP, Lewis H, Mieler WF and Meyers S: Vitrectomy in eyes with peripheral retinal angioma associated with traction macular detachment. *Ophthalmology* (1996) 103: 329-335; discussion 334-335.
  24. Moriarty BJ, Acheson RW and Serjeant GR: Epiretinal membranes in sickle cell disease. *Br J Ophthalmol* (1987) 71: 466-469.
  25. Nicoletti VG, Nicoletti R, Ferrara N, Meli G, Reibaldi M and Reibaldi A: Diabetic patients and retinal proliferation: an evaluation of the role of vascular endothelial growth factor (VEGF). *Exp Clin Endocrinol Diabetes* (2003) 111: 209-214.
  26. Schwartz PL, Fastenberg DM and Shakin JL: Management of macular pucker associated with retinal angiomas. *Ophthalmic Surg* (1990) 21: 550-556.
  27. Augustin AJ, Spitznas M, Koch F, Grus F and Böker T: Indicators of oxidative tissue damage and inflammatory activity in epiretinal membranes of proliferative diabetic retinopathy, proliferative vitreoretinopathy and macular pucker. *Ger J Ophthalmol* (1995) 4: 47-51.
  28. Charteris DG, Hiscott P, Grierson I and Lightman SL: Proliferative vitreoretinopathy. Lymphocytes in epiretinal membranes. *Ophthalmology* (1992) 99: 1364-1367.
  29. Kiryu J, Kita M, Tanabe T, Yamashiro K, Ieki Y, Miura S, Miyahara S, Tamura H and Honda Y: Pars plana vitrectomy for epiretinal membrane associated with sarcoidosis. *Jpn J Ophthalmol* (2003) 47: 479-483.
  30. McDonald HR, De Bustros S and Sipperley JO: Vitrectomy for epiretinal membrane with Candida chorioretinitis. *Ophthalmology* (1990) 97: 466-469.
  31. Naoi N and Sawada A: Effect of vitrectomy on epiretinal membranes after endogenous fungal endophthalmitis. *Jpn J Ophthalmol* (1996) 40: 434-438.
  32. Repka MX and Green WR: Epiretinal membrane: an unusual complication of childhood optic neuritis. *J Pediatr Ophthalmol Strabismus* (1996) 33: 124-127.
  33. Hagler WS and Aturaliya U: Macular pucker after retinal detachment surgery. *Br J Ophthalmol* (1971) 55: 451-457.
  34. Michels RG and Gilbert HD: Surgical management of macular pucker after retinal reattachment surgery. *Am J Ophthalmol* (1979) 88: 925-929.
  35. Winthrop SR, Cleary PE, Minckler DS and Ryan SJ: Penetrating eye injuries: a histopathological review. *Br J Ophthalmol* (1980) 64: 809-817.
  36. Green WR, Kenyon KR, Michels RG, Gilbert HD and De La Cruz Z: Ultrastructure of epiretinal membranes causing macular pucker after retinal re-attachment surgery. *Trans Ophthalmol Soc U K* (1979) 99: 65-77.
  37. Jahn CE, Minich V, Moldaschel S, Stahl B, Jedelhauser P, Kremer G and Kron M: Epiretinal membranes after extracapsular cataract surgery (1). *J Cataract Refract Surg* (2001) 27: 753-760.
  38. Saran BR and Brucker AJ: Macular epiretinal membrane formation and treated retinal breaks. *Am J Ophthalmol* (1995) 120: 480-485.
  39. Lincoff HA and McLean JM: Cryosurgical treatment of retinal detachment. II. *Am J Ophthalmol* (1966) 61: 1227-1234.
  40. Lobes LA and Burton TC: The incidence of macular pucker after retinal detachment surgery. *Am J Ophthalmol* (1978) 85: 72-77.
  41. Michels RG: Vitrectomy for macular pucker. *Ophthalmology* (1984) 91: 1384-1388.
  42. Yoshimura T, Sonoda KH, Sugahara M, Mochizuki Y, Enaida H, Oshima Y, Ueno A, Hata Y, Yoshida H and Ishibashi T: Comprehensive analysis of inflammatory immune mediators in vitreoretinal diseases. *PLoS One* (2009) 4: e8158.
  43. Tang S, Scheiffarth OF, Wildner G, Thurau SR and Lund OE: Lymphocytes, macrophages and HLA-DR expression in vitreal and epiretinal membranes of proliferative vitreoretinopathy. An immunohistochemical study. *Ger J Ophthalmol* (1992) 1: 176-179.
  44. Tamura K, Yokoyama T, Ebihara N and Murakami A: Histopathologic analysis of the internal limiting membrane surgically peeled from eyes with diffuse diabetic macular edema. *Jpn J Ophthalmol* (2012) 56: 280-287.
  45. Matoba R, Kanzaki Y, Doi S, Kanzaki S, Kimura S, Hosokawa MM, Shiode Y, Takahashi K and Morizane Y: Assessment of epiretinal membrane formation using en face optical coherence tomography after rhegmatogenous retinal detachment repair. *Graefes Arch Clin Exp Ophthalmol* (2021) Mar 12 [Epub ahead of print]
  46. Hirokawa H, Jalkh AE, Takahashi M, Takahashi M, Trempe CL and Schepens CL: Role of the vitreous in idiopathic preretinal macular fibrosis. *Am J Ophthalmol* (1986) 101: 166-169.
  47. Kuriyama S, Matsumura M, Harada T, Ishigooka H and Ogino N: Surgical techniques and reattachment rates in retinal detachment due to macular hole. *Arch Ophthalmol* (1990) 108: 1559-1561.
  48. Wise GN: Clinical features of idiopathic preretinal macular fibrosis. Schoenberg Lecture. *Am J Ophthalmol* (1975) 79: 349-347.
  49. Wiznia RA: Natural history of idiopathic preretinal macular fibrosis. *Ann Ophthalmol* (1982) 14: 876-878.
  50. Jensen OM and Larsen M: Objective assessment of photoreceptor displacement and metamorphopsia: a study of macular holes. *Arch Ophthalmol* (1998) 116: 1303-1306.
  51. Burke W: Psychophysical observations concerned with a foveal lesion (macular hole). *Vision Res* (1999) 39: 2421-2427.
  52. Bouwens MD and Van Meurs JC: Sine Amsler Charts: a new method for the follow-up of metamorphopsia in patients undergoing macular pucker surgery. *Graefes Arch Clin Exp Ophthalmol* (2003) 241: 89-93.
  53. Zur D and Ullman S: Filling-in of retinal scotomas. *Vision Res* (2003) 43: 971-982.
  54. Cohen SY, Lamarque F, Saucet J-C, Provent P, Langram C and LeGargasson J-F: Filling-in phenomenon in patients with age-related macular degeneration: differences regarding uni- or bilaterality of central scotoma. *Graefes Arch Clin Exp Ophthalmol* (2003) 241: 785-791.
  55. Mansouri B, Hansen BC and Hess RF: Disrupted retinotopic maps in amblyopia. *Invest Ophthalmol Vis Sci* (2009) 50: 3218-3225.
  56. Bex PJ: (In) sensitivity to spatial distortion in natural scenes. *J Vis* (2010) 10: 1-15.
  57. Nguyen JH, Yee KM, Sadun AA and Sebag J: Quantifying Visual Dysfunction and the Response to Surgery in Macular Pucker. *Ophthalmology* (2016) 123: 1500-1510.
  58. Hirano M, Morizane Y, Kanzaki Y, Kimura S, Hosokawa M, Shiode Y, Doi S, Toshima S, Takahashi K, Hosogi M, Fujiwara A, Takasu I and Shiraga F: En face image-based analysis of retinal traction caused by



- epiretinal membrane and its relationship with visual functions. *Retina* (2019) 40: 1262–1271.
59. Hirano M, Morizane Y, Kimura S, Hosokawa M, Shiode Y, Doi S, Toshima S, Takahashi K, Hosogi M, Fujiwara A, Takasu I, Okanouchi T, Kawabata M and Shiraga F: Assessment of Lamellar Macular Hole and Macular Pseudohole With a Combination of En Face and Radial B-scan Optical Coherence Tomography Imaging. *Am J Ophthalmol* (2018) 188: 29–40.
  60. Romano MR, Cennamo G, Amoroso F, Montorio D, Castellani C, Reibaldi M and Cennamo G: Intraretinal changes in the presence of epiretinal traction. *Graefes Arch Clin Exp Ophthalmol* (2017) 255: 31–38.
  61. Peyman GA, Cheema R, Conway MD and Fang T: Triamcinolone acetonide as an aid to visualization of the vitreous and the posterior hyaloid during pars plana vitrectomy. *Retina* (2000) 20: 554–555.
  62. Sakamoto T, Miyazaki M, Hisatomi T, Nakamura T, Ueno A, Itaya K and Ishibashi T: Triamcinolone-assisted pars plana vitrectomy improves the surgical procedures and decreases the postoperative blood-ocular barrier breakdown. *Graefes Arch Clin Exp Ophthalmol* (2002) 240: 423–429.
  63. Yagi F, Takagi S and Tomita G: Incidence and causes of iatrogenic retinal breaks in idiopathic macular hole and epiretinal membrane. *Semin Ophthalmol* (2014) 29: 66–69.
  64. Kadosono K, Itoh N, Uchio E, Nakamura S and Ohno S: Staining of internal limiting membrane in macular hole surgery. *Arch Ophthalmol* (2000) 118: 1116–1118.
  65. Burk SE, Da Mata AP, Snyder ME, Rosa RH and Foster RE: Indocyanine green-assisted peeling of the retinal internal limiting membrane. *Ophthalmology* (2000) 107: 2010–2014.
  66. Feron EJ, Veckeneer M, Parys-Van Ginderdeuren R, Van Lommel A, Melles GRJ and Stalmans P: Trypan blue staining of epiretinal membranes in proliferative vitreoretinopathy. *Arch Ophthalmol* (2002) 120: 141–144.
  67. Sakamoto H, Yamanaka I, Kubota T and Ishibashi T: Indocyanine green-assisted peeling of the epiretinal membrane in proliferative vitreoretinopathy. *Graefes Arch Clin Exp Ophthalmol* (2003) 241: 204–207.
  68. Perrier M and Sébag M: Epiretinal membrane surgery assisted by trypan blue. *Am J Ophthalmol* (2003) 135: 909–911.
  69. Kimura H, Kuroda S and Nagata M: Triamcinolone acetate-assisted peeling of the internal limiting membrane. *Am J Ophthalmol* (2004) 137: 172–173.
  70. Fraser EA, Cheema RA and Roberts MA: Triamcinolone acetate-assisted peeling of retinal internal limiting membrane for macular surgery. *Retina* (2003) 23: 883–884.
  71. Haritoglou C, Eibl K, Schaumberger M, Mueller AJ, Priglinger S, Alge C and Kampik A: Functional outcome after trypan blue-assisted vitrectomy for macular pucker: a prospective, randomized, comparative trial. *Am J Ophthalmol* (2004) 138: 1–5.
  72. Hillenkamp J, Saikia P, Gora F, Sachs HG, Lohmann CP, Roider J, Bäuml W and Gabel V-P: Macular function and morphology after peeling of idiopathic epiretinal membrane with and without the assistance of indocyanine green. *Br J Ophthalmol* (2005) 89: 437–443.
  73. de Bustros S, Thompson JT, Michels RG, Rice TA and Glaser BM: Vitrectomy for idiopathic epiretinal membranes causing macular pucker. *Br J Ophthalmol* (1988) 72: 692–695.
  74. Park DW, Dugel PU, Garda J, Sipperley JO, Thach A, Sneed SR and Blaisdell J: Macular pucker removal with and without internal limiting membrane peeling: pilot study. *Ophthalmology* (2003) 110: 62–64.
  75. Bovey EH, Uffer S and Achache F: Surgery for epimacular membrane: impact of retinal internal limiting membrane removal on functional outcome. *Retina* (2004) 24: 728–735.
  76. Sandali O, El Sanharawi M, Basli E, Bonnel S, Lecuen N, Barale P-O, Borderie V, Laroche L and Monin C: Epiretinal membrane recurrence: incidence, characteristics, evolution, and preventive and risk factors. *Retina* (2013) 33: 2032–2038.
  77. Schechet SA, DeVience E and Thompson JT: The effect of internal limiting membrane peeling on idiopathic epiretinal membrane surgery, with a review of the literature. *Retina* (2017) 37: 873–880.
  78. Shimada H, Nakashizuka H, Hattori T, Mori R, Mizutani Y and Yuzawa M: Double Staining with Brilliant Blue G and Double Peeling for Epiretinal Membranes. *Ophthalmology* (2009) 116: 1370–1376.
  79. Seidel G, Weger M, Stadlmüller L, Pichler T and Haas A: Association of preoperative optical coherence tomography markers with residual inner limiting membrane in epiretinal membrane peeling. *PLoS One* (2013) 8: e66217.
  80. Hisatomi T, Notomi S, Tachibana T, Oishi S, Asato R, Yamashita T, Murakami Y, Ikeda Y, Enaida H, Sakamoto T and Ishibashi T: Brilliant Blue G double staining enhances successful internal limiting membrane peeling with minimal adverse effect by low cellular permeability into live cells. *Retina* (2015) 35: 310–318.
  81. Hisatomi T, Enaida H, Matsumoto H, Kagimoto T, Ueno A, Hata Y, Kubota T, Goto Y and Ishibashi T: Staining ability and biocompatibility of brilliant blue G: preclinical study of brilliant blue G as an adjunct for capsular staining. *Arch Ophthalmol* (2006) 124: 514–519.
  82. Ueno A, Hisatomi T, Enaida H, Kagimoto T, Mochizuki Y, Goto Y, Kubota T, Hata Y and Ishibashi T: Biocompatibility of brilliant blue G in a rat model of subretinal injection. *Retina* (2007) 27: 499–504.
  83. Kanzaki S, Kanzaki Y, Doi S, Matoba R, Kimura S, Hosokawa M, Shiode Y, Takahashi K, Fujiwara A, Takasu I and Morizane Y: En Face Image-Based Analysis of Epiretinal Membrane Formation after Surgery for Idiopathic Epiretinal Membrane. *Ophthalmol Retina* (2020) 28: S2468–6530(20)30430–9.
  84. Pesin SR, Olk RJ, Grand MG, Boniuk I, Arribas NP, Thomas MA, Williams DF and Burgess D: Vitrectomy for premacular fibroplasia. Prognostic factors, long-term follow-up, and time course of visual improvement. *Ophthalmology* (1991) 98: 1109–1114.
  85. de Bustros S, Thompson JT, Michels RG, Enger C, Rice TA and Glaser BM: Nuclear sclerosis after vitrectomy for idiopathic epiretinal membranes. *Am J Ophthalmol* (1988) 105: 160–164.
  86. McDonald HR, Verre WP and Aaberg TM: Surgical management of idiopathic epiretinal membranes. *Ophthalmology* (1986) 93: 978–983.
  87. Margherio RR, Cox MS, Trese MT, Murphy PL, Johnson J and Minor LA: Removal of epimacular membranes. *Ophthalmology* (1985) 92: 1075–1083.
  88. Michels RG: Vitreous surgery for macular pucker. *Am J Ophthalmol* (1981) 92: 628–639.
  89. Yiu G, Marra K V, Wagley S, Krishnan S, Sandhu H, Kovacs K, Kuperwaser M and Arroyo JG: Surgical outcomes after epiretinal membrane peeling combined with cataract surgery. *Br J Ophthalmol* (2013) 97: 1197–1201.
  90. Jackson TL, Donachie PHJ, Williamson TH, Sparrow JM and Johnston RL: the Royal College of Ophthalmologists' National Ophthalmology Database Study of Vitreoretinal Surgery. *Retina* (2015) 35: 1615–1621.
  91. Sakamoto M, Yoshida I, Hashimoto R, Masahara H and Maeno T: Risk factors for retinal breaks during macular hole surgery. *Clin Ophthalmol* (2018) 12: 1981–1985.
  92. de Bustros S, Rice TA, Michels RG, Thompson JT, Marcus S and Glaser BM: Vitrectomy for macular pucker. Use after treatment of retinal tears or retinal detachment. *Arch Ophthalmol* (1988) 106: 758–760.
  93. Poliner LS, Olk RJ, Grand MG, Escoffery RF, Okun E and Boniuk I: Surgical management of premacular fibroplasia. *Arch Ophthalmol* (1988) 106: 761–764.
  94. Michels RG: Vitrectomy for macular pucker. *Ophthalmology* (1984) 91: 1384–1388.
  95. Issa SA, Connor A, Habib M and Steel DHW: Comparison of retinal breaks observed during 23 gauge transconjunctival vitrectomy versus conventional 20 gauge surgery for proliferative diabetic retinopathy. *Clin Ophthalmol* (2011) 5: 109–114.
  96. Nakano T, Uemura A and Sakamoto T: Incidence of iatrogenic peripheral retinal breaks in 23-gauge vitrectomy for macular diseases. *Retina* (2011) 31: 1997–2001.
  97. Wong JG, Sachdev N, Beaumont PE and Chang AA: Visual outcomes

- following vitrectomy and peeling of epiretinal membrane. *Clin Experiment Ophthalmol* (2005) 33: 373-378.
98. Shimada H, Nakashizuka H, Hattori T, Mori R, Mizutani Y and Yuzawa M: Incidence of endophthalmitis after 20- and 25-gauge vitrectomy causes and prevention. *Ophthalmology* (2008) 115: 2215-2220.
  99. Hu AYH, Bourges J-L, Shah SP, Gupta A, Gonzales CR, Oliver SCN and Schwartz SD: Endophthalmitis after pars plana vitrectomy a 20- and 25-gauge comparison. *Ophthalmology* (2009) 116: 1360-1365.
  100. Oshima Y, Kadonosono K, Yamaji H, Inoue M, Yoshida M, Kimura H, Ohji M, Shiraga F and Hamasaki T, Japan Microincision Vitrectomy Surgery Study Group: Multicenter survey with a systematic overview of acute-onset endophthalmitis after transconjunctival microincision vitrectomy surgery. *Am J Ophthalmol* (2010) 150: 716-725. e1.
  101. Inoue M and Kadonosono K: Macular diseases: epiretinal membrane. *Dev Ophthalmol* (2014) 54: 159-163.
  102. Roh M and Elliott D: Internal Limiting Membrane Peeling During Idiopathic Epiretinal Membrane Removal: Literature Review. *Int Ophthalmol Clin* (2015) 55: 91-101.
  103. Chang W, Lin C, Lee C, Sung T, Tung T and Liu J: Vitrectomy with or without internal limiting membrane peeling for idiopathic epiretinal membrane: A meta-analysis. *PLoS One* (2017) 12: e0179105.
  104. Terasaki H, Miyake Y, Nomura R, Piao CH, Hori K, Niwa T and Kondo M: Focal macular ERGs in eyes after removal of macular ILM during macular hole surgery. *Invest Ophthalmol Vis Sci* (2001) 42: 229-234.
  105. Tadayoni R, Paques M, Massin P, Mouki-Benani S, Mikol J and Gaudric A: Dissociated optic nerve fiber layer appearance of the fundus after idiopathic epiretinal membrane removal. *Ophthalmology* (2001) 108: 2279-2283.
  106. Uemoto R, Yamamoto S, Aoki T, Tsukahara I, Yamamoto T and Takeuchi S: Macular configuration determined by optical coherence tomography after idiopathic macular hole surgery with or without internal limiting membrane peeling. *Br J Ophthalmol* (2002) 86: 1240-1242.
  107. Uemura A, Kanda S, Sakamoto Y and Kita H: Visual field defects after uneventful vitrectomy for epiretinal membrane with indocyanine green-assisted internal limiting membrane peeling. *Am J Ophthalmol* (2003) 136: 252-257.
  108. Ito Y, Terasaki H, Takahashi A, Yamakoshi T, Kondo M and Nakamura M: Dissociated optic nerve fiber layer appearance after internal limiting membrane peeling for idiopathic macular holes. *Ophthalmology* (2005) 112: 1415-1420.
  109. Lim JW, Cho JH and Kim HK: Assessment of macular function by multifocal electroretinography following epiretinal membrane surgery with internal limiting membrane peeling. *Clin Ophthalmol* (2010) 4: 689-694.
  110. Spaide RF: "Dissociated optic nerve fiber layer appearance" after internal limiting membrane removal is inner retinal dimpling. *Retina* (2012) 32: 1719-1726.
  111. Liu H, Zuo S, Ding C, Dai X and Zhu X: Comparison of the Effectiveness of Pars Plana Vitrectomy with and without Internal Limiting Membrane Peeling for Idiopathic Retinal Membrane Removal: A Meta-Analysis. *J Ophthalmol* (2015) 2015: 974568.
  112. Azuma K, Ueta T, Eguchi S and Aihara M: Effects of internal limiting membrane peeling combined with removal of idiopathic epiretinal membrane: A systematic review of literature and meta-analysis. *Retina* (2017) 37: 1813-1819.
  113. Scheerlinck LME, Van Der Valk R and Van Leeuwen R: Predictive factors for postoperative visual acuity in idiopathic epiretinal membrane: A systematic review. *Acta Ophthalmol* (2015) 93: 203-212.
  114. Kinoshita T, Imaizumi H, Okushiba U, Miyamoto H, Ogino T and Mitamura Y: Time course of changes in metamorphopsia, visual acuity, and OCT parameters after successful epiretinal membrane surgery. *Investig Ophthalmol Vis Sci* (2012) 53: 3592-3597.
  115. Massin P, Allouch C, Haouchine B, Metge F, Paques M, Tangui L, Erginay A and Gaudric A: Optical coherence tomography of idiopathic macular epiretinal membranes before and after surgery. *Am J Ophthalmol* (2000) 130: 732-739.
  116. Dawson SR, Shunmugam M and Williamson TH: Visual acuity outcomes following surgery for idiopathic epiretinal membrane: an analysis of data from 2001 to 2011. *Eye (Lond)* (2014) 28: 219-224.
  117. Asaria R, Garnham L, Gregor ZJ and Sloper JJ: A prospective study of binocular visual function before and after successful surgery to remove a unilateral epiretinal membrane. *Ophthalmology* (2008) 115: 1930-1937.
  118. Falkner-Radler CI, Glittenberg C, Hagen S, Benesch T and Binder S: Spectral-Domain Optical Coherence Tomography for Monitoring Epiretinal Membrane Surgery. *Ophthalmology* (2010) 117: 798-805.
  119. Inoue M, Morita S, Watanabe Y, Kaneko T, Yamane S, Kobayashi S, Arakawa A and Kadonosono K: Preoperative inner segment/outer segment junction in spectral-domain optical coherence tomography as a prognostic factor in epiretinal membrane surgery. *Retina* (2011) 31: 1366-1372.
  120. Kunikata H, Abe T, Kinukawa J and Nishida K: Preoperative factors predictive of postoperative decimal visual acuity  $\geq 1.0$  following surgical treatment for idiopathic epiretinal membrane. *Clin Ophthalmol* (2011) 5: 147-154.
  121. Shiono A, Kogo J, Klose G, Takeda H, Ueno H, Tokuda N, Inoue J, Matsuzawa A, Kayama N, Ueno S and Takagi H: Photoreceptor outer segment length: A prognostic factor for idiopathic epiretinal membrane surgery. *Ophthalmology* (2013) 120: 788-794.
  122. Brito PN, Gomes NL, Vieira MP, Faria PA, Fernandes AV, Rocha-Sousa A and Falcão-Reis F: Possible role for fundus autofluorescence as a predictive factor for visual acuity recovery after epiretinal membrane surgery. *Retina* (2014) 34: 273-280.
  123. Kim JH, Kang SW, Kong MG and Ha HS: Assessment of retinal layers and visual rehabilitation after epiretinal membrane removal. *Graefes Arch Clin Exp Ophthalmol* (2013) 251: 1055-1064.
  124. Mitamura Y, Hirano K, Baba T and Yamamoto S: Correlation of visual recovery with presence of photoreceptor inner/outer segment junction in optical coherence images after epiretinal membrane surgery. *Br J Ophthalmol* (2009) 93: 171-175.
  125. Kim JH, Kim YM, Chung EJ, Lee SY and Koh HJ: Structural and functional predictors of visual outcome of epiretinal membrane surgery. *Am J Ophthalmol* (2012) 153: 103-110. e1.
  126. Cobos E, Arias L, Ruiz-Moreno J, Rubio M, Garcia-Bru P, Caminal J, Catala-Mora J and Arruga J: Preoperative study of the inner segment/outer segment junction of photoreceptors by spectral-domain optical coherence tomography as a prognostic factor in patients with epiretinal membranes. *Clin Ophthalmol* (2013) 7: 1467-1470.
  127. Suh MH, Seo JM, Park KH and Yu HG: Associations between macular findings by optical coherence tomography and visual outcomes after epiretinal membrane removal. *Am J Ophthalmol* (2009) 147: 473-480. e3.
  128. Okamoto F, Sugiura Y, Okamoto Y, Hiraoka T and Oshika T: Associations between metamorphopsia and foveal microstructure in patients with epiretinal membrane. *Investig Ophthalmol Vis Sci* (2012) 53: 6770-6775.
  129. Okamoto F, Sugiura Y, Okamoto Y, Hiraoka T and Oshika T: Inner nuclear layer thickness as a prognostic factor for metamorphopsia after epiretinal membrane surgery. *Retina* (2015) 35: 2107-2114.
  130. Ichikawa Y, Imamura Y and Ishida M: Inner Nuclear Layer Thickness, a Biomarker of Metamorphopsia in Epiretinal Membrane, Correlates With Tangential Retinal Displacement. *Am J Ophthalmol* (2018) 193: 20-27.
  131. Witkin AJ, Ko TH, Fujimoto JG, Schuman JS, Bauman CR, Rogers AH, Reichel E and Duker JS: Redefining lamellar holes and the vitreomacular interface: An ultrahigh-resolution optical coherence tomography study. *Ophthalmology* (2006) 113: 388-397.
  132. Govetto A, Dacquay Y, Farajzadeh M, Platner E, Hirabayashi K, Hosseini H, Schwartz SD and Hubschman JP: Lamellar Macular Hole: Two Distinct Clinical Entities? *Am J Ophthalmol* (2016) 164: 99-109.
  133. Pang CE, Spaide RF and Freund KB: Epiretinal Proliferation Seen in Association With Lamellar Macular Holes. *Retina* (2014) 34: 1513-1523.
  134. Parolini B, Schumann RG, Cereda MG, Haritoglou C and Pertile G: Lamellar macular hole: A clinicopathologic correlation of surgically excised epiretinal membranes. *Investig Ophthalmol Vis Sci* (2011) 52: 9074-9083.
  135. Schumann RG, Compera D, Schaumberger MM, Wolf A, Fazekas C,

- Mayer WJ, Kampik A and Haritoglou C: Epiretinal membrane characteristics correlate with photoreceptor layer defects in lamellar macular holes and macular pseudoholes. *Retina* (2015) 35: 727–735.
136. Itoh Y, Levison AL, Kaiser PK, Srivastava SK, Singh RP and Ehlers JP: Prevalence and characteristics of hyporeflective preretinal tissue in vitreomacular interface disorders. *Br J Ophthalmol* (2016) 100: 399–404.
  137. Hubschman JP, Govetto A, Spaide RF, Schumann R, Steel D, Figueroa MS, Sebag J, Gaudric A, Staurengli G, Haritoglou C, Kadosono K, Thompson JT, Chang S, Bottoni F and Tadayoni R: Optical coherence tomography-based consensus definition for lamellar macular hole. *Br J Ophthalmol* (2020) 104: 1741–1747.
  138. Obana A, Sasano H, Okazaki S, Otsuki Y, Seto T and Gohto Y: Evidence of carotenoid in surgically removed lamellar hole-associated epiretinal proliferation. *Investig Ophthalmol Vis Sci* (2017) 58: 5157–5163.
  139. Wiznia RA: Posterior vitreous detachment and idiopathic preretinal macular gliosis. *Am J Ophthalmol* (1986) 102: 196–198.
  140. Shiraga F, Takasu I, Fukuda K, Fujita T, Yamashita A, Hirooka K, Shirakata Y, Morizane Y and Fujiwara A: Modified vitreous surgery for symptomatic lamellar macular hole with epiretinal membrane containing macular pigment. *Retina* (2013) 33: 1263–1269.
  141. Coassin M, Mastrofilippo V, Stewart JM, Fanti A, Belpoliti M, Cimino L, Iovieno A and Fontana L: Lamellar macular holes: surgical outcome of 106 patients with long-term follow-up. *Graefes Arch Clin Exp Ophthalmol* (2018) 256: 1265–1273.
  142. Kohno RI, Hata Y, Kawahara S, Kita T, Arita R, Mochizuki Y, Aiello LP and Ishibashi T: Possible contribution of hyalocytes to idiopathic epiretinal membrane formation and its contraction. *Br J Ophthalmol* (2009) 93: 1020–1026.
  143. Sramek SJ, Wallow IH, Stevens TS and Nork TM: Immunostaining of preretinal membranes for actin, fibronectin, and glial fibrillary acidic protein. *Ophthalmology* (1989) 96: 835–841.
  144. Gamulescu M-A, Chen Y, He S, Spee C, Jin M, Ryan SJ and Hinton DR: Transforming growth factor beta2-induced myofibroblastic differentiation of human retinal pigment epithelial cells: regulation by extracellular matrix proteins and hepatocyte growth factor. *Exp Eye Res* (2006) 83: 212–222.
  145. Guidry C, King JL and Mason JO: Fibrocontractive Müller cell phenotypes in proliferative diabetic retinopathy. *Invest Ophthalmol Vis Sci* (2009) 50: 1929–1939.
  146. Unoki N, Nishijima K, Kita M, Oh H, Sakamoto A, Kameda T, Hayashi H and Yoshimura N: Lamellar macular hole formation in patients with diabetic cystoid macular edema. *Retina* (2009) 29: 1128–1133.
  147. Compera D, Entchev E, Haritoglou C, Scheler R, Mayer WJ, Wolf A, Kampik A and Schumann RG: Lamellar Hole-Associated Epiretinal Proliferation in Comparison to Epiretinal Membranes of Macular Pseudoholes. *Am J Ophthalmol* (2015) 160: 373–384. e1.
  148. Pang CE, Maberley DA, Freund KB, White VA, Rasmussen S, To E and Matsubara JA: Lamellar hole-associated epiretinal proliferation: A clinicopathologic correlation. *Retina* (2016) 36: 1408–1412.
  149. Purtskhvanidze K, Balken L, Hamann T, Wöster L, von der Burchard C, Roeder J and Treumer F: Long-term follow-up of lamellar macular holes and pseudoholes over at least 5 years. *Graefes Arch Clin Exp Ophthalmol* (2018) 256: 1067–1078.
  150. Figueroa MS, Govetto A, Steel DH, Sebag J, Virgili G and Hubschman JP: Pars plana vitrectomy for the tractional and degenerative lamellar macular holes: Functional and anatomical results. *Retina* (2019) 39: 2090–2098.
  151. Shiode Y, Morizane Y, Takahashi K, Kimura S, Hosokawa M, Hirano M, Doi S, Toshima S, Hosogi M, Fujiwara A and Shiraga F: Embedding of lamellar hole-associated epiretinal proliferation combined with internal limiting membrane inversion for the treatment of lamellar macular hole: A case report. *BMC Ophthalmol* (2018) 18: 257.
  152. Takahashi K, Morizane Y, Kimura S, Shiode Y, Doi S, Okanouchi T, Takasu I, Inoue Y and Shiraga F: Results of lamellar macular hole-associated epiretinal proliferation embedding technique for the treatment of degenerative lamellar macular hole. *Graefes Arch Clin Exp Ophthalmol* (2019) 257: 2147–2154.
  153. Michalewska Z, Michalewski J and Adelman RA: Inverted Internal Limiting Membrane Flap Technique for Large Macular Holes. *Ophthalmology* (2010) 117: 2018–2025.
  154. Shiode Y, Morizane Y, Matoba R, Hirano M, Doi S, Toshima S, Takahashi K, Araki R, Kanzaki Y, Hosogi M, Yonezawa T, Yoshida A and Shiraga F: The role of inverted internal limiting membrane flap in macular hole closure. *Investig Ophthalmol Vis Sci* (2017) 58: 4847–4855.
  155. Machemer R: [The surgical removal of epiretinal macular membranes (macular puckers) (author's transl)]. *Klin Monbl Augenheilkd* (1978) 173: 36–42 (in German).