

Online Research @ Cardiff

This is an Open Access document downloaded from ORCA, Cardiff University's institutional repository: <https://orca.cardiff.ac.uk/id/eprint/143841/>

This is the author's version of a work that was submitted to / accepted for publication.

Citation for final published version:

Jenkins, Robert H. ORCID: <https://orcid.org/0000-0001-8500-9044>, Hughes, Stuart T.O., Cardus Figueras, Ana and Jones, Simon A. ORCID: <https://orcid.org/0000-0001-7297-9711> 2021. Unravelling the broader complexity of IL-6 involvement in health and disease. Cytokine 148 , 155684. 10.1016/j.cyto.2021.155684 file

Publishers page: <http://dx.doi.org/10.1016/j.cyto.2021.155684>
<<http://dx.doi.org/10.1016/j.cyto.2021.155684>>

Please note:

Changes made as a result of publishing processes such as copy-editing, formatting and page numbers may not be reflected in this version. For the definitive version of this publication, please refer to the published source. You are advised to consult the publisher's version if you wish to cite this paper.

This version is being made available in accordance with publisher policies.

See

<http://orca.cf.ac.uk/policies.html> for usage policies. Copyright and moral rights for publications made available in ORCA are retained by the copyright holders.



Unravelling the broader complexity of IL-6 involvement in health and disease

Robert H. Jenkins^{1,2}, Stuart TO. Hughes^{1,2}, Ana Cardus Figueras^{1,2}, Simon A. Jones^{1,2*},

¹Division of Infection & Immunity, The School of Medicine, Cardiff University, Cardiff, Wales, UK

²Systems Immunity Research Institute, The School of Medicine, Cardiff University, Cardiff, Wales, UK

Corresponding Author:

Professor Simon A Jones

Division of Infection & Immunity

The School of Medicine, Cardiff University

The Tenovus Building, Heath Campus

Cardiff CF14 4XN

Wales, UK

E-Mail: JonesSA@cardiff.ac.uk

Tel: 0044-2920-687-325

Highlights–

1. IL-6 controls tissue and immune homeostasis in both health and disease.
2. The IL-6 signalling cassette is complex and regulated at multiple levels.
3. IL-6 controls immune regulation, cell metabolism, neuroendocrine function, pain, tissue repair and regeneration, and psychological wellbeing.
4. Specific genetic mutations identify important roles for IL-6 in human physiology.
5. Biological drugs used to inhibit IL-6 in pathophysiology target disease processes and the wider aspects of IL-6 bioactivity.

Abstract–

The classification of interleukin-6 (IL-6) as a pro-inflammatory cytokine undervalues the biological impact of this cytokine in health and disease. With broad activities affecting the immune system, tissue homeostasis and metabolic processes, IL-6 displays complex biology. The significance of these involvements has become increasingly important in clinical settings where IL-6 is identified as a prominent target for therapy. Here, clinical experience with IL-6 antagonists emphasises the need to understand the context-dependent properties of IL-6 within an inflammatory environment and the anticipated or unexpected consequences of IL-6 blockade. In this review, we will describe the immunobiology of IL-6 and explore the gamut of IL-6 bioactivity affecting the clinical response to biological drugs targeting this cytokine pathway.

Keywords: Cytokines, biological drugs, inhibition, inflammation, health, disease

1. Introduction–

Initially described as a cytokine involved in the control of lymphocyte and hepatic responses, the activities of IL-6 now extend beyond these early definitions. Besides the involvement of IL-6 in innate and adaptive immunity, IL-6 elicits broad-reaching effects on various physiological processes. These include impacts on tissue homeostasis, metabolism, neuroendocrine function, fatigue, and mental wellbeing (Figure-1)¹⁻⁸. Thus, IL-6 is a truly pleiotropic cytokine, and biological drugs inhibiting IL-6 in pathophysiology often alters the physiological regulation of these processes⁹⁻¹⁵. In this review, we will explore the properties of IL-6 in health and disease by offering a perspective of IL-6 biology beyond its role in immune regulation.

Characterisation of the IL-6-like cytokine system in *Drosophila melanogaster* identifies roles for this ancestral pathway in development, tissue homeostasis, metabolism, and innate immunity (Figure-1)¹⁶⁻¹⁹. These functions echo those described for IL-6, and other members of the IL-6 cytokine family, in higher mammals and humans^{9,12,20}. For example, studies of murine macrophages and *Drosophila* plasmacytes identify roles for IL-6 (unpaired-3 in *Drosophila*) in glucose metabolism, with mouse models evidencing the ability of IL-6 to promote glucose intolerance and resistance to obesity-driven changes in insulin sensitivity^{21,22}. Here, the capacity of IL-6 to engage a receptor system that signals *via* specific Janus-activated kinases (Jak) and members of the Signal Transducer and Activator of Transcription (STAT) family help explain how cells sense and interpret cytokine cues to elicit alternate functions or cell-specific responses^{20,23,24}. In this regard, the expression and bioactivity of IL-6 are tightly regulated, ensuring both its physiological involvement in homeostasis and rapid induction following immune challenge.

Almost all haematopoietic and non-haematopoietic cells express IL-6, with changes in gene regulation occurring in response to various inflammatory stimuli. These include cytokines (e.g., IL-1 β , TNF α , IL-17), Toll-like receptor agonists, prostaglandins, adipokines and cellular stress^{12,20}. Serum IL-6 levels in humans are typically low (1-5 pg/ml). However, physiological levels of IL-6 rapidly increase following infection, trauma, or injury to reach quantities in the high ng/ml or μ g/ml range²⁵. The regulation of IL-6 gene expression occurring via a complex array of intracellular and extracellular factors, which help to limit IL-6 bioavailability or contain IL-6 bioactivity¹². For example, microRNAs (e.g., let-7a), RNAases and RNA-binding proteins (e.g., regnase-1, Arid5a, Lin28B). IL-6 expression is also subject to coordinated circadian rhythms, including seasonal variations in IL-6 bioavailability between winter and summer months²⁶⁻³¹.

Moreover, circulating IL-6 levels often provide an index of systemic inflammation in infection, autoimmunity, and cancer, and increases in IL-6 frequently contribute to cytokine response syndromes and associated patient mortality^{32,33}. In this regard, IL-6 is often a better predictor of disease activity than C-reactive protein³⁴⁻³⁷. Consequently, is IL-6 a biomarker of systemic inflammatory or a primary driver of pathophysiology? The clinical benefits associated with biological drugs that target IL-6 or its receptor are significant and identify IL-6 as a keystone cytokine responsible for evolving or maintaining adverse inflammatory reactions^{11-13,38}. However, these therapies are not always successful, and patients with the same underlying disease often show differing therapeutic responses, and IL-6 blockade is not suitable for all diseases³⁹⁻⁴¹. Building on the narrative of several excellent reviews of IL-6 biology in disease^{6,9-13,20,38,42-44}, we will now discuss the broader actions of IL-6 to offer some thoughts on the context-dependent properties of IL-6 in health and disease.

2. The IL-6 signalling cassette—

The composition and biological activities of the IL-6 receptor has been described elsewhere^{24,45-48}. Briefly, the IL-6 receptor comprises an 80kDa type-1 cytokine receptor subunit (IL-6R, CD126) and a 130kDa signal-transducing receptor subunit (gp130, CD130; encoded by IL6ST). The binding of IL-6 to IL-6R facilitates a ligand-dependent interaction with gp130, with structure-function studies predicting that a signalling IL-6 receptor requires an IL-6-IL-6R-gp130 complex arranged in a dimer structure (termed classical IL-6 receptor signalling) (Figure-2A)^{45,46,48}.

Although initially characterised as the signalling subunit of the IL-6 receptor, gp130 also functions as the β -cytokine receptor for IL-11, IL-27, oncostatin-M, ciliary neurotrophic factor, leukaemia inhibitory factor, cardiotrophin-1, and cardiotrophin-like cytokine^{9,20,49}. All cells of the body express gp130. While deletion of *gp130* in mice results in embryonic lethality, the introduction of genetic mutations into the gp130 sequence identify essential roles in development, haematopoiesis, tissue homeostasis, cell survival and growth, and immune regulation^{9,20,49}. In contrast, IL-6R is more restricted in its cellular expression. Cells expressing IL-6R include leukocytes, hepatocytes, megakaryocytes, and certain mesenchymal cells^{9,20,49}. While *Il6ra*^{-/-} and *Il6*^{-/-} mice are viable⁵⁰⁻⁵², these mice show differences in wound healing, susceptibility to colitis and alterations in glucose tolerance^{22,53-55}. These phenotypic differences have raised questions about potential alternate ligands for IL-6R. Ligands that display a low affinity for IL-6R include ciliary neurotrophic factor, p28IL-27 (IL-30) and heterodimeric cytokine-like factors^{12,56-59}. Conversely, IL-6 reportedly binds CD5

to amplify STAT3 signals in mouse tumour models⁶⁰. The relevance or biological need for these additional interactions is not overtly obvious and requires further investigation.

The cellular expression of a specific receptor system typically shapes the biological functions of a cytokine⁶¹. However, the discovery of a soluble IL-6R (sIL-6R) in human urine and plasma and the identification that IL-6 binding to sIL-6R creates an agonistic complex capable of triggering gp130 signalling (termed IL-6 trans-signalling) has added to the mystic surrounding IL-6 biology (Figure-2A)^{49,62-64}. In this regard, the IL-6-sIL-6R complex resembles a heterodimeric cytokine (e.g., IL-12, IL-23, IL-27) and sIL-6R shares close sequence identity with IL-12p40 and EB13^{65,66}. There is now a large body of research demonstrating the regulation of sIL-6R in inflammation. Investigations in various mouse models describe central roles for IL-6 trans-signalling in colitis, tissue fibrosis, allergy, infectious disease, arthritis, cancer-associated inflammation, neuroinflammation and vascular disease^{51,67-85}.

Beyond the characterisation of classical IL-6 receptor signalling and IL-6 trans-signalling, a recent report described a mode of IL-6 signalling termed IL-6 trans-presentation⁸⁶. Mechanistically equivalent to a form of signalling described from IL-15, IL-6 trans-presentation may arise in immune privileged sites where the cellular presentation of IL-6 and IL-6R to a neighbouring gp130-positive cell type supports local immune reactions (Figure-2A)^{86,87}. Further work is still required to identify the significance of IL-6 trans-presentation in health and disease.

3. Contextualisation of IL-6 activities in disease—

Cytokines quintessentially deliver cellular signals affecting proliferation, differentiation, survival, and cell type-specific effector functions⁶¹. These broad activities epitomise the contribution of IL-6 to infectious disease, cancer, and immune-mediated inflammatory diseases. Interleukin-6 often receives bad press in these settings. Here, the benefits afforded by blocking IL-6 in clinical settings endorse the pro-inflammatory attributes of this cytokine. It is easy to forget that IL-6 contributes to protective immunity (e.g., B-cell antibody production) and control of inhibitory signals essential for the dampening of innate immunity (e.g., deactivation of macrophage responses). These activities are essential for anti-microbial host defense^{12,22,50,88,89}. Thus, IL-6 involvement in disease progression typically arises through distortion or skewing of these processes, altering the course of innate and adaptive immunity and a transition towards inflammation-induced tissue damage. This level of complexity potentially explaining the mixed patient outcomes reported with IL-6 blocking

therapies in SARS-CoV2 infections³². Several excellent articles have recently reviewed the role of IL-6 in disease^{6,9-13,20,38,42-44}. To support the narrative in the forthcoming sections, we will focus on some key features of IL-6 receptor signalling relevant to the subsequent discussion (Figure-2B).

Cells sense and interpret IL-6 signals through receptor-associated cytoplasmic tyrosine kinases (Jak-1, Jak-2, and non-receptor tyrosine-protein kinase 2 [Tyk2]) and signalling intermediates downstream of the tyrosine-protein phosphatase SHP2. The activation of Jak-1, Jak-2 and Tyk2 affecting distinct patterns of tyrosine and serine phosphorylation linked with control of the activation of latent transcription factors (namely, STAT1, STAT3 and to a lesser extent STAT5)^{20,24}. In contrast, SHP2 promotes activation of the Ras-Raf pathway and the Src-YAP-Notch pathway, regulating transcriptional activators including NF-IL-6 (a CAAT-enhancer binding protein; C/EBP), activator protein 1 (AP-1) and mitogen-activated protein kinases (MAPKs)^{34,44,90}. Receptor activation of the Ras-Raf pathway primarily controls IL-6 responses affecting proliferation, differentiation, and tissue regeneration (Figure-2B)^{20,47,91}. However, most of the biological activities assigned to IL-6 occur through activation of Jak-STAT signalling and the transcriptional properties of STAT1 and STAT3. Genetic ablation studies emphasising the importance of these transcription factors in determining haematopoiesis, immune cell recruitment, activation and survival, and stromal cell responses affecting tissue remodelling and chronic disease progression (Figure-2B)²⁰. In this regard, the transcriptional output of STAT1 and STAT3 often provides valuable insights into the role of IL-6 in autoimmunity and cancer, and their activities serve as clinical predictors of patient outcomes.

4. IL-6 in tissue homeostasis, regeneration, and repair–

Experience with IL-6 antagonists in the clinic illustrates that these therapies are less successful in indications affecting barrier surfaces^{12,20,39}. Patients with IL-6 autoantibodies or genetic mutations affecting the IL-6 receptor cassette or associated Jak-STAT pathway also develop complications at barrier surfaces. These include subcutaneous abscesses, staphylococcal cellulitis, and eczematoid dermatitis⁹²⁻⁹⁸. Some of these mutations also promote connective tissue abnormalities and immunodeficiencies⁹⁶⁻⁹⁹. For patients receiving IL-6 blocking drugs, infections typically occur at epithelial surfaces and mucosal barriers, and gastric perforations and the associated incidence of diverticulitis are significant clinical considerations when applying these therapies^{20,38,39}. These clinical phenotypes evidence the importance of IL-6 in maintaining barrier immunity and tissue homeostasis.

Various studies identify roles for IL-6 in maintaining tissue homeostasis. These include activities that affect adipose tissues, bone turnover, liver regeneration, haematopoiesis, neurones, and epithelial barriers. Most of these involvements originate from the capacity of IL-6 to control cellular proliferation, differentiation, or survival. The ability of IL-6 to promote hepatocyte proliferation epitomises these activities, contributing to liver regeneration following hepatic injury^{100,101}. A similar scenario exists in the bone. Here, IL-6 promotes osteoclastogenesis through the regulation of RANK ligand and osteoprotegerin essential for bone formation¹⁰². Indeed, IL-6 levels and IL6 polymorphisms often impact bone mineral density during inflammatory disease¹⁰³. Similar changes occur in mice where Il6 deficiency results in impaired bone remodelling¹⁰⁴⁻¹⁰⁶. *Il6*^{-/-} mice display marked protection from osteopenia and postmenopausal bone loss following oestrogen depletion¹⁰⁴. Extending these findings to mucosal barrier surfaces, IL-6 maintains the functional integrity of epithelial surfaces¹⁰⁷⁻¹⁰⁹. These latter observations explain the increased susceptibility of gastric perforations seen in patients on IL-6 therapy¹¹⁰. It is, therefore, apparent that IL-6 plays a pivotal role in governing stromal tissue physiology essential for immune homeostasis and barrier immunity. For example, through influences on the cell properties and effector characteristics of resident tissue and inflammatory infiltrating immune cells. These functions illustrate how IL-6 activities encourage communication between the stromal tissue compartment and the immune system. In this regard, IL-6 supports a transition from innate to adaptive immunity^{12,44,68,111,112}. Thus, the impact of IL-6 on tissue homeostasis and barrier immunity often appears intrinsically connected. In wound healing and fibrosis, IL-6 coordinates inflammation, proliferative signals, and the remodelling of extracellular matrix^{77,113-118}. Compromised IL-6 signalling frequently contributing to aberrant healing and tissue scarring in patients¹¹⁹⁻¹²¹. A similar scenario occurs in atopic dermatitis. Here, IL-6 affects the expansion of IL-4 and IL-13-secreting Th2 CD4+ T cells and changes in IL-22R α on keratinocytes^{122,123}. The mechanistic involvement of IL-6 in atopic dermatitis is not fully understood. Clinical trials of atopic dermatitis show that tocilizumab improved erythema, induration, excoriation and lichenification¹²⁴. However, the study also noted an increase in bacterial skin infections in the treatment group. Thus, supporting a role for IL-6 in both barrier immunity and the maintenance of tissue integrity.

In this regard, IL-6 antagonists typically fail in disease settings where IL-6 controls the physiological maintenance of tissue homeostasis. IL-6 blockade occasionally exacerbating the symptoms of any pre-existing condition. These include diseases of the skin (e.g., psoriasis), gut (e.g., Crohn's disease), and ankylosing spondylitis^{39,125-128}. However, in these inflammatory settings, IL-6 still contributes to

the underlining pathology. For example, IL-6 activities in the gut lamina propria control the infiltration and maintenance of effector T-cells. Thus, contributing to diseases such as Crohn's disease, inflammatory bowel disease, ulcerative colitis, and diverticulitis^{52,67,129-131}. Thus, IL-6 maintains the local inflammatory reaction by supporting the activities of other cytokines (e.g., TNF α , IL-4, IL-5, IL-13, IL-17, and IL-23), including those targeted for the treatment of diseases affecting the skin, gut, and lung. Currently, it is unclear how IL-6 coordinates the balance between tissue and immune homeostasis and the transition towards tissue injury and chronic disease within these clinical settings. Additional research addressing the balance of classical IL-6 receptor signalling versus IL-6 trans-signalling is anticipated^{51,132-134}. A further consideration is also required to understand how IL-6 transmits signals via the Jak-STAT pathway²³. Control of the intracellular cytokine signalling is complex, and subtle alternations in the delivery of STAT1 and STAT3 signals profoundly alters the transcriptional output of IL-6 in target cells^{23,135,136}. Similar, chronic disease progression is often associated with episodic bouts of inflammation. These are likely to modify the way IL-6 contributes to pathology. Studies assessing the impact of recurrent inflammation show that IL-6 compromises tissue repair and drives fibrosis through the expansion of pro-fibrotic Th1 cells as a response to repeated inflammatory activation⁷⁷.

Investigations of IL-6 *trans*-signalling *in vitro* and *in vivo* first described activities responsible for leukocyte recruitment and adhesion^{44,68,69,111,112}. Whilst these reports commonly identify mechanisms affecting the control of local tissue inflammation, the impact of IL-6 *trans*-signalling in endothelial cells, fibroblasts, and smooth muscle cells emphasises the importance of IL-6 in regulating vascular function^{83,137-143}. Such activities impact endothelial dysfunction, complement activation and deposition, vascular calcification, coagulation, plaque formation, and the expression of inflammatory chemokines (e.g., CCL2) affecting atherosclerosis^{112,143-148}. In this regard, genome-wide association studies and related Mendelian randomisation studies commonly identify genetic determinants of the IL-6 receptor cassette linked with cardiovascular risk¹⁴⁹⁻¹⁵⁵. These hallmarks may explain the systemic consequences of IL-6 bioactivity in chronic disease and associated multimorbidity¹⁵⁶⁻¹⁵⁸. For example, cardiovascular complications in COVID-19 patients³².

5. Metabolism–

The pleiotropic functions of IL-6 include effects on lipids, glucose, iron, and mitochondrial bioactivity^{12,20,159}. Patients receiving IL-6 antagonists often show clinical signs and symptoms

attributed to the disruption of these biochemical processes. For example, IL-6 reduces appetite, delays gastric emptying, decreases postprandial glycemia and regulates adiposity^{160,161}.

Interestingly, IL-6 activities are often enhanced by exercise or as a consequence of an active lifestyle¹⁶²⁻¹⁶⁴. Systemic changes in IL-6 following physical exercise affects glucose disposal and insulin sensitivity¹⁶⁵⁻¹⁶⁷. Patients on IL-6 antagonists frequently experience hyperlipidaemia and increased body mass¹⁶⁸⁻¹⁷¹. Studies of maturity-onset obesity, hyperlipidaemia and insulin resistance in animal models highlight the importance of IL-6 in regulating these metabolic processes¹⁷²⁻¹⁷⁴. The administration of IL-6 in mouse models of obesity (e.g., high-fat diet) or type-2 diabetes led to reduced body mass, suppressed appetite, and improved insulin sensitivity *via* the production of glucagon-like peptide¹⁷⁵⁻¹⁷⁸. While the precise mechanisms involved require further investigation, changes in appetite and increases in energy expenditure may occur *via* IL-6 trans-signalling in the paraventricular nucleus of the hypothalamus^{173,177}. Here, studies in cell type-specific *Il6*^{-/-} or *Il6ra*^{-/-} mouse models of obesity reveal the complexity of these cell and tissue-dependent mechanisms. Adipocyte-specific *Il6*^{-/-} mice demonstrate decreased adipose tissue inflammation and increased energy expenditure, with no effect on glucose tolerance or insulin sensitivity^{179,180}. In comparison, myeloid-specific *Il6*^{-/-} or *Il6ra*^{-/-} mice develop increased insulin resistance, reduced energy expenditure, hepatic steatosis, and enhanced macrophage-driven inflammation of adipose tissues^{22,179}. Moreover, T-cell specific *Il6ra*^{-/-} mice initially display improved insulin sensitivity and reduced adipose tissue inflammation that reverses over time, potentially due to compensatory IL-6 trans-signalling mechanisms¹⁸¹.

IL-6 also regulates the master switch of iron homeostasis, hepcidin (Figure-3). Hepatic changes in hepcidin expression in response to IL-6 promote iron-restricted erythropoiesis and inflammatory anaemia during infection, autoimmune disease, and cancer^{3,182,183}. IL-6 antagonism improves inflammatory anaemia in patients with rheumatoid arthritis, multicentric Castleman disease or undergoing haemodialysis^{2,184,185}. These activities reflect the role of IL-6 as a hepatocyte stimulating factor that accounts for the control of acute phase reactants and serum lipids^{186,187}. Studies in rheumatoid arthritis or patients with a high risk of atherothrombosis demonstrate that IL-6 inhibitors reduce various biomarkers of systemic inflammation or thrombosis. These include C-reactive protein, serum amyloid-A, haptoglobin, fibrinogen, secretory phospholipase A2, and lipoprotein-a^{188,189}. Focussing more specifically on lipid metabolism, patients on tocilizumab typically display enhanced levels of low-density and high-density lipoprotein C¹⁸⁶. Tocilizumab

intervention alters the lipid composition to lower cholesterol-associated biomarkers of cardiovascular risk¹⁸⁹. These studies emphasise the potential benefit of IL-6 or IL-6R inhibition in cardiovascular disease and pulmonary arterial hypertension. However, reports of stroke, myocardial infarction and aneurysms following tocilizumab treatment in patients with Kawasaki disease or serious infections suggest that the underlining health status of a patient may ultimately influence the clinical outcome¹⁹⁰⁻¹⁹².

Integral to the IL-6 regulation of metabolic processes is its ability to regulate mitochondria bioactivity. These include influences affecting changes in oxidative capacity, reactive oxygen species production, calcium mobilisation and mitochondrial remodelling in response to obesity, type-2 diabetes, and cancer cachexia^{172,193-197}. Again, we see interesting links with studies performed during exercise. Acute administration of IL-6 to trained athletes impairs performance and promotes chronic fatigue¹⁹⁸. Here, IL-6 regulates glucose metabolism and hypothalamic neuropeptides involved in energy homeostasis¹⁶⁰. Whilst much of this work has been conducted in healthy volunteers during normal physiology or exercise, the relevance of these discoveries to chronic diseases where patients suffering from debilitating fatigue requires further consideration. Future studies will establish how pathophysiology distorts the metabolic properties of IL-6.

6. Psychoneuroimmunology–

Patients with chronic disease or cancer suffer from complex clinical symptoms and comorbidities that influence their clinical management and long-term treatment. For a significant proportion of patients, chronic illness has a profound impact on their psychological wellbeing. Approximately 30-40% of patients display symptoms of depression, and patients with chronic illness frequently suffer with mental fatigue, anxiety, alterations in mood and insomnia^{199,200}. These symptoms dramatically affect the quality of life of patients and significantly impact their long-term clinical outcomes. For example, medical outpatients with depression show almost twice as many days of restricted activity or missed work due to illness than patients without depression. Here, data from clinical trials and patient recorded outcomes support the view that inflammatory mediators activate processes affecting psychopathology and behaviour¹⁹⁹⁻²⁰⁷. Studies in humans and rodents show that endotoxin administration promotes changes in cognitive function, social behaviour and anhedonia¹⁹⁹. Patients with anxiety, major depressive disorders, schizophrenia, or neurodegenerative disease show similar behaviours²⁰⁷. Here, signs of acute psychosocial stress and depression, and feelings of fatigue, insomnia, and anger (or hostility) often correlate with systemic markers of inflammation^{199-201,208}.

These include cytokines, acute phase reactants, prostaglandins, and changes in lipid peroxidation and mitochondrial activity^{199,201-206}. While these and other studies have identified new and exciting ideas on the development of psychopathology (e.g., alterations in endothelial blood-brain barrier function or metabolic dysfunction), the underpinning biology remains unclear¹⁹⁹⁻²⁰¹.

Cytokines, including IL-6, control various hormone-like activities that are subject to tight circadian regulation during health^{12,209}. These include seasonal variations and daily oscillations in circulating IL-6 and sIL-6R levels, which reflect physiological sleep patterns. Chronic illness and heightened systemic inflammation will distort these circadian processes to impact physical and mental wellbeing. These would be akin to the effects seen in shift workers and frequent flyers experiencing jet lag. Gross changes in sleep behaviours often contribute to non-communicable diseases^{210,211}. These include systemic arterial hypertension, dyslipidaemia, and type-2 diabetes. Here, biological drugs, including adalimumab, etanercept and tocilizumab, often improve patient wellbeing in chronic disease^{12,15,209,212,213}. For example, treatment of rheumatoid arthritis with IL-6 antagonists reduces symptoms of depression, fatigue, and anhedonia²¹⁴⁻²¹⁶. While the mode-of-action of these drugs and how they improve these patient outcomes remain unknown, parallel studies in *IL6*^{-/-} mice emphasise their resistance to depression-like symptoms and show behaviours reflecting enhanced hedonic motivation^{8,217-219}. Treatment of mice with MR16-1 (a mouse surrogate antibody for tocilizumab) demonstrates a rapid and long-lasting anti-depressive action in susceptible mice²²⁰. Genetic studies further identify various risk alleles in *IL6* and *IL6R* associated with major depressive disorders²²¹⁻²²⁶. For example, the IL-6R single polymorphism rs228145 variant²²⁶. This mutation encodes an Asp³⁵⁸Ala amino acid substitution, which affects the proteolytic cleavage of IL-6R and increases circulating sIL-6R²²⁷. Emphasising a link between inflammation, stress, and depression, this polymorphism increases the risk of cardiovascular disease and enhances susceptibility for insulin resistance and type-2 diabetes, but a more favourable outcome in COVID-19^{153,226-228}.

Current models used to study depression in patients include treatment with type-1 interferon (e.g., IFN α), commonly prescribed in viral hepatitis and malignant melanoma²²⁹. Clinical depression is a significant adverse outcome of IFN α therapy and typically occurs in 30-50% of patients²³⁰. Neuroimaging of patients treated with IFN α shows that type-1 interferons promote hyperactivity of the basal ganglia and controls dopamine metabolism and dopamine receptor signalling through induction of several interferon target genes^{231,232}. Thus, cytokine therapy may activate localised transcriptional events within the brain. It is, however, uncertain whether this accounts for the

clinical impact biological drugs have on patient wellbeing and psychopathology in the treatment of chronic disease⁸. For example, patients typically receive large quantities of tocilizumab (infusion of 4-8mg/kg). However, only small amounts of the drug are detectable within the central nervous system²³³. Thus, IL-6 antagonists may improve depression, fatigue, and anhedonia by inhibiting physiological processes under systemic control. Examples would include the blockade of cytokine actions on the liver, vasculature, or neuroendocrine system⁸. As reflected by the impact on the blood-brain barrier, organs of the hypothalamus-pituitary-adrenal cortex (HPA) axis, or biochemical pathways linked with lipid peroxidation, and amino acid catabolism (Figure-3)²³⁴⁻²³⁹. Studies with tocilizumab support links between IL-6 activity, changes in hepcidin regulated iron metabolism, anaemia, and fatigue^{11,12,15}. Advancing this concept, mouse studies of depressive behaviours show that the anti-depressive effect of IL-6 inhibition only occurs when drugs are administered intravenously but not intracerebroventricularly^{14,240}. Thus, a sustained or heightened change in systemic inflammation may negatively impact psychological wellbeing and mental health commonly associated with infectious disease, immune-mediated inflammatory disorders, and cancer. However, translating IL-6 discoveries from mouse to human remains challenging and currently limited to patient recorded outcomes in defined patient groups on IL-6 antagonists^{216,241-244}.

7. Pain perception–

Early papers describing the biological properties of IL-6 identified IL-6 as a neurotrophic factor²⁴⁵. With wide-ranging effects on neuronal survival and differentiation, neurons, astrocytes, microglia, and endothelial cells provide a cellular source of IL-6 within the central nervous system²⁴⁶. The cell targets for IL-6 are mainly astrocytes and microglia, which express the cognate IL-6R. However, many studies evidence the importance of IL-6 trans-signalling and potentially IL-6 trans-presentation. For example, in nerve regeneration and remyelination in normal physiology and deleterious outcomes associated with neurodegeneration^{246,247}. These include the formation of sympathetic and sensory neurons from neonatal superior cervical ganglia and the embryonic dorsal root ganglia and the expansion of Schwann cell progenitors expressing myelin basic protein²⁴⁸⁻²⁵⁰. The neurotrophic properties of neurotrophins often becoming augmented by IL-6 signalling. Here, IL-6 signals acting *via* the Jak-STAT pathway work in combination with nerve growth factor²⁵¹. How IL-6 signalling determines the balance between neurodegeneration and regeneration is unclear. So, how do IL-6 responses become distorted in neuroinflammation? To address this question, it is now essential to understand how the epigenetic and transcriptional landscape changes to bring out alternate cell functions or fates.

The contribution of IL-6 to neuronal biology also depends on the location of IL-6 involvement within the periphery or central nervous system. Cytokine signalling affecting the generation of neuronal precursors such as acetylcholine from noradrenaline or 5-hydroxytryptamine. Similar involvements include a dampening of neuron excitation and synaptic transmission within the central system (e.g., via metabotropic glutamate receptors and TRPM7) and enabling neuron excitation and sensitivity within the periphery (e.g., via TRPV1, TRPA1)²⁵²⁻²⁶⁰. Thus, IL-6 elicits responses affecting higher central nervous system processing and includes activities linked with sensory (nociceptive) and neuropathic pain⁴. In this regard, *IL6*^{-/-} mice often show signs of sensory impairment, and intrathecal administration of IL-6 in rats promotes animal behaviours indicative of pain perception^{261,262}.

Pain is a major factor affecting the quality of life for patients with debilitating chronic diseases. Recent advances in experimental medicine and fundamental discovery science have strived to distinguish the IL-6 control of pain from inhibition of inflammatory processes following therapeutic intervention with IL-6 blocking strategies^{4,263,264}. Observational studies in patients with wounds show that the degree of injury correlates with increases in IL-6 and the magnitude of the pain response²⁶⁵. Moreover, rats administered with IL-6 show hypersensitivity to mechanical and thermal stimuli²⁶⁶. During inflammation, changes in systemic and local IL-6 concentrations affect distinct processes affecting pain perception²⁶⁴. Here, systemic changes in IL-6 activity drives an amplification of pain signalling, which includes increased dorsal root ganglia activity and inhibition of feedback mechanisms that would curtail pain conduction^{4,263,264}. These activities are augmented by IL-6 locally generated within inflamed tissues, which increases nociceptive plasticity and nerve fibre regrowth and the persistence of pain signals from sensitized peripheral neurons^{263,264}.

The involvement of IL-6 in pain is a rapidly evolving area of research with highly complex biology. However, extensive evidence from literature clearly defines the role of IL-6 in both inflammatory and neuropathic pain^{246,263,267-269}. Future research is now needed to understand the neuronal cell targets for IL-6, the mode of cellular activation adopted (e.g., classical IL-6 receptor signalling vs IL-6 trans-signalling vs IL-6 trans-presentation), and their relevance to human physiology and disease.

8. Complexities of IL-6 antagonism–

Early studies of IL-6 characterised the biological activities of IL-6 as a lymphokine. The original cytokine nomenclature classified its activity as interferon- β 2, cytotoxic T-cell differentiation factor, B-cell differentiation factor and B-cell stimulatory factor-2. Thus, IL-6 was highly associated with the proliferative expansion, survival and activation of T-cells and the differentiation of B-cells¹².

Simultaneous investigations performed by researchers working on liver regeneration and the acute phase response identified IL-6 as a hepatocyte stimulating factor. For example, with impacts on C-reactive protein, haptoglobin, hepcidin and fibrinogen¹⁰⁰. Thus, identifying the relevance of IL-6 to the control of infectious disease, immune-mediated diseases, and cancer^{10,50}. These initial studies pioneered rapid advances in biological drug development, leading to the clinical approval of tocilizumab in 2009. The spectrum of drugs that target this cytokine now includes inhibitors of IL-6, the IL-6R or IL-6 trans-signalling. These are in various stages of clinical development, whilst others are in routine clinical practice. Most are monoclonal antibodies. These include clazakizumab, olokizumab, sirukumab, siltuximab and ziltivekimab, which bind IL-6 and tocilizumab and sarilumab targeting IL-6R. These drugs display subtle differences in pharmacodynamics or pharmacokinetics and clinical efficacy against several diseases⁹⁻¹⁵. IL-6 antagonists are now routinely prescribed for rheumatoid arthritis, other rheumatic-like disorders (e.g., juvenile idiopathic arthritis, adult-onset Still's disease, giant cell arteritis, Takayasu arteritis), Castleman disease, and cytokine release syndromes¹¹. While experimental medicine continues to identify other indications tractable to IL-6 inhibition (e.g., uveitis, neuromyelitis optica, systemic sclerosis-associated interstitial lung disease), patients often display differences in therapeutic response with clinical trials evidencing scenarios in which IL-6 inhibition fails^{11,12,20,32,39,270}. For example, tocilizumab is less effective in conditions where IL-6 orchestrates barrier immunity or the maintenance of epithelial homeostasis^{12,20,32,39,40}. Notable examples include psoriasis, atopic dermatitis and systemic sclerosis-associated skin fibrosis, and gastrointestinal diseases (e.g., Crohn's disease, inflammatory bowel disease, colitis). These features of IL-6 inhibition also reflect contraindications associated with drug intervention. For example, gastrointestinal perforations and associated diverticulitis are recognised complications in rheumatoid arthritis patients on IL-6 antagonists^{12,39}. However, this view of IL-6 involvement in disease processes comes from biological drugs targeting the IL-6 receptor. Clinical trials with tocilizumab remain the most widely studied mechanism of IL-6 inhibition¹¹. There is now a need to understand whether therapies targeting IL-6 offer different clinical outcomes to biological drugs against IL-6R. Clazakizumab, olokizumab, siltuximab, and ziltivekimab potentially managing any inflammatory flare in IL-6 production¹². In stark contrast, IL-6 receptor inhibitors require more sustained concentrations to maintain a blockade of both membrane and soluble forms of the IL-6R¹². Thus, in clinical indications where IL-6 maintains tissue homeostasis, IL-6R inhibition may negatively impact physiological processes essential for more tissue function. Here, the publication of clinical data for olamkicept (an engineered variant of sgp130) in patients with active inflammatory

bowel disease showcases how the blockade of IL-6 trans-signalling, representing the major pathway for IL-6 involvement in disease, adds a degree of selectivity to the clinical inhibition of IL-6¹³². Further clinical investigations are required to advance this therapeutic application of olamkcept as a selective IL-6 antagonist. However, these promising data open possibilities to entrap inflammatory IL-6 in a complex with sIL-6R, leaving classical membrane-bound IL-6R signalling intact⁴⁹.

Biological drugs that target IL-6 possess different pharmacodynamics and pharmacokinetics. They should not be considered like-for-like substitutes and often show differing behaviours when administered to patients. There is complexity here that highlights the need to differentiate the biological properties of these drugs. For example, the inhibition of IL-6 by clazakizumab and olokizumab are mechanistically very different, targeting functional epitopes within Site-1 and Site-3 of the IL-6 sequence^{12,24,46}. Clazakizumab inhibits IL-6 binding to IL-6R (Site-1), while olokizumab blocks the docking of IL-6 to gp130 (Site-3) and the formation of a signalling IL-6 receptor complex^{12,46,271}. This fundamental difference affects the bioavailability of circulating IL-6, with antibodies targeting Site-1 causing sustained increases in systemic IL-6 levels when administered to patients²⁷². Whilst increases in IL-6 are also seen with other IL-6 blockers, this effect appears less prominent with Site-3 IL-6 blockers or anti-IL-6R monoclonal antibodies such as tocilizumab^{273,274}. It is currently unclear whether these changes impact the control of physiological processes governed by IL-6. Current studies evaluating the impact of IL-6 antagonists on conditions such as depression and anxiety have focussed on diseases where IL-6 inhibition improves clinical symptoms and promotes disease remission (e.g., rheumatoid arthritis)²¹⁴⁻²¹⁶. Clinical improvements were not, however, seen in hematopoietic cell transplantation patients. Here, tocilizumab contributed to a worsening of depressive symptoms²⁷⁵. Thus, there is a need to reflect on the clinical context and the mode of IL-6 inhibition when reviewing biological drugs that target IL-6.

9. Concluding remarks–

Research involving animals have significantly enhanced our understanding of IL-6 biology in health and disease. Here, cytokine and cytokine receptor-deficient mice, genetic knock-in strains and pharmaceutical agents including antibodies, soluble receptors, engineered fusion proteins have contributed to studies of classical IL-6 receptor signalling, IL-6 trans-signalling and the characterisation of receptor signalling mechanisms. These discoveries explain how IL-6 drives pathology and pioneering the development of biological drugs and small molecule inhibitors. Many of these agents are in routine clinical practice, and the real-world experiences obtained with these

agents continue to broaden our appreciation of IL-6 biology. For example, tissue regeneration, metabolism (e.g., glucose, lipid, iron), neuroendocrine activity, sleep, and psychological wellbeing^{15,237,238}. Clinical correlates often place IL-6 at the centre of these conditions. These include involvements in associated comorbidities and patient multimorbidity in chronic disease. Here, IL-6 contributes to increased cardiovascular risk (e.g., alterations in endothelial dysfunction, cellular adhesion, clot formation, and vascular tone), and processes affecting anaemia, fatigue, acute psychosocial stress, and depression. So, what does the future hold for IL-6 research?

In clinical studies, the measurement of IL-6 provides a blunt marker of inflammation. However, interpretations often ignore the contribution of sIL-6R, the impact of sgp130, circadian differences in IL-6 expression, and genetic traits that affect IL-6 bioactivity and bioavailability^{12,32,43,78,276}. When considering the physiological role of IL-6 in health and disease, it is essential to gain as much information as possible about the biology of the cytokine. Such insights will determine whether IL-6 is simply a biomarker of inflammation (akin to measures of C reactive protein) or a keystone cytokine supporting the architecture of the disease process¹². Here, the complex nature of human diseases emphasises the need to consider at least two interconnecting inflammatory reactions. One that drives tissue-specific pathology and, a second, affecting the systemic features of chronic disease. For instance, available data from COVID-19 patients treated with IL-6 antagonists often made it difficult to understand whether IL-6 drives immune pathology or the containment of viral infection and anti-microbial immunity^{32,78,276}. Thus, we need to become less fixated on defining IL-6 as a pro-inflammatory cytokine. Current investigator-led studies are exploring the benefits of IL-6 antagonists in various conditions. Examples include diseases of the eyes, schizophrenia, Schnitzler syndrome, graft-versus-host disease, erosive osteoarthritis, familial Mediterranean fever, and myocardial infarction. The primary endpoint of these studies is an improvement in disease activity. However, extending these outcome measures to identify the impact of IL-6 inhibition on common comorbidities within these conditions may provide additional insights into the physiological properties of IL-6 in health and disease. Here, advances in clinical trial design (e.g., bucket or umbrella trials) provide new and exciting opportunities to explore new features of cytokine biology that reflect changes in systemic inflammation or altered normal physiology.

10. References–

1. Andrews, C., McLean, M.H. & Durum, S.K. Cytokine Tuning of Intestinal Epithelial Function. *Front Immunol* **9**, 1270 (2018).
2. Isaacs, J.D., Harari, O., Kobold, U., Lee, J.S. & Bernasconi, C. Effect of tocilizumab on haematological markers implicates interleukin-6 signalling in the anaemia of rheumatoid arthritis. *Arthritis Res Ther* **15**, R204 (2013).
3. Nemeth, E., *et al.* IL-6 mediates hypoferremia of inflammation by inducing the synthesis of the iron regulatory hormone hepcidin. *J Clin Invest* **113**, 1271-1276 (2004).
4. Atzeni, F., Nucera, V., Masala, I.F., Sarzi-Puttini, P. & Bonitta, G. IL-6 Involvement in pain, fatigue and mood disorders in rheumatoid arthritis and the effects of IL-6 inhibitor sarilumab. *Pharmacol Res* **149**, 104402 (2019).
5. Flint, T.R., *et al.* Tumor-Induced IL-6 Reprograms Host Metabolism to Suppress Anti-tumor Immunity. *Cell Metab* **24**, 672-684 (2016).
6. Choy, E.H.S. & Calabrese, L.H. Neuroendocrine and neurophysiological effects of interleukin 6 in rheumatoid arthritis. *Rheumatology (Oxford)* **57**, 1885-1895 (2018).
7. Mauer, J., Denson, J.L. & Bruning, J.C. Versatile functions for IL-6 in metabolism and cancer. *Trends Immunol* **36**, 92-101 (2015).
8. Ting, E.Y., Yang, A.C. & Tsai, S.J. Role of Interleukin-6 in Depressive Disorder. *Int J Mol Sci* **21**(2020).
9. Rose-John, S. Interleukin-6 Family Cytokines. *Cold Spring Harb Perspect Biol* **10**(2018).
10. Rose-John, S. Interleukin-6 signalling in health and disease. *F1000Res* **9**(2020).
11. Choy, E.H., *et al.* Translating IL-6 biology into effective treatments. *Nat Rev Rheumatol* **16**, 335-345 (2020).
12. Hunter, C.A. & Jones, S.A. IL-6 as a keystone cytokine in health and disease. *Nat Immunol* **16**, 448-457 (2015).
13. Kang, S., Tanaka, T., Narazaki, M. & Kishimoto, T. Targeting Interleukin-6 Signaling in Clinic. *Immunity* **50**, 1007-1023 (2019).
14. Aniszewska, A., *et al.* The expression of interleukin-6 and its receptor in various brain regions and their roles in exploratory behavior and stress responses. *J Neuroimmunol* **284**, 1-9 (2015).
15. Choy, E.H., Kavanaugh, A.F. & Jones, S.A. The problem of choice: current biologic agents and future prospects in RA. *Nature reviews. Rheumatology* **9**, 154-163 (2013).
16. Hombria, J.C., Brown, S., Hader, S. & Zeidler, M.P. Characterisation of Upd2, a Drosophila JAK/STAT pathway ligand. *Dev Biol* **288**, 420-433 (2005).
17. Mukherjee, T., Hombria, J.C. & Zeidler, M.P. Opposing roles for Drosophila JAK/STAT signalling during cellular proliferation. *Oncogene* **24**, 2503-2511 (2005).
18. Brown, S., Hu, N. & Hombria, J.C. Identification of the first invertebrate interleukin JAK/STAT receptor, the Drosophila gene domeless. *Curr Biol* **11**, 1700-1705 (2001).
19. Kingsolver, M.B. & Hardy, R.W. Making connections in insect innate immunity. *Proc Natl Acad Sci U S A* **109**, 18639-18640 (2012).
20. Jones, S.A. & Jenkins, B.J. Recent insights into targeting the IL-6 cytokine family in inflammatory diseases and cancer. *Nat Rev Immunol* **18**, 773-789 (2018).
21. Woodcock, K.J., *et al.* Macrophage-derived upd3 cytokine causes impaired glucose homeostasis and reduced lifespan in Drosophila fed a lipid-rich diet. *Immunity* **42**, 133-144 (2015).
22. Mauer, J., *et al.* Signaling by IL-6 promotes alternative activation of macrophages to limit endotoxemia and obesity-associated resistance to insulin. *Nat Immunol* **15**, 423-430 (2014).

23. Villarino, A.V., Kanno, Y. & O'Shea, J.J. Mechanisms and consequences of Jak-STAT signaling in the immune system. *Nat Immunol* **18**, 374-384 (2017).
24. Heinrich, P.C., *et al.* Principles of interleukin (IL)-6-type cytokine signalling and its regulation. *Biochem J* **374**, 1-20 (2003).
25. Waage, A., Brandtzaeg, P., Halstensen, A., Kierulf, P. & Espevik, T. The complex pattern of cytokines in serum from patients with meningococcal septic shock. Association between interleukin 6, interleukin 1, and fatal outcome. *J Exp Med* **169**, 333-338 (1989).
26. Masuda, K., *et al.* Arid5a controls IL-6 mRNA stability, which contributes to elevation of IL-6 level in vivo. *Proc Natl Acad Sci U S A* **110**, 9409-9414 (2013).
27. Sugimoto, T., *et al.* Clock gene Per1 regulates the production of CCL2 and interleukin-6 through p38, JNK1 and NF-kappaB activation in spinal astrocytes. *Mol Cell Neurosci* **59**, 37-46 (2014).
28. Viswanathan, S.R., *et al.* Lin28 promotes transformation and is associated with advanced human malignancies. *Nat Genet* **41**, 843-848 (2009).
29. Lissoni, P., Rovelli, F., Brivio, F., Brivio, O. & Fumagalli, L. Circadian secretions of IL-2, IL-12, IL-6 and IL-10 in relation to the light/dark rhythm of the pineal hormone melatonin in healthy humans. *Nat Immun* **16**, 1-5 (1998).
30. Fernandes, G.L., Araujo, P., Tufik, S. & Andersen, M.L. The role of IL-6 and STAT in sleep and neuroinflammation. *Clin Immunol* **180**, 58-59 (2017).
31. Dopico, X.C., *et al.* Widespread seasonal gene expression reveals annual differences in human immunity and physiology. *Nat Commun* **6**, 7000 (2015).
32. Jones, S.A. & Hunter, C.A. Is IL-6 a key cytokine target for therapy in COVID-19? *Nat Rev Immunol* (2021).
33. Mangalmurti, N. & Hunter, C.A. Cytokine Storms: Understanding COVID-19. *Immunity* **53**, 19-25 (2020).
34. Panichi, V., *et al.* Interleukin-6 is a stronger predictor of total and cardiovascular mortality than C-reactive protein in haemodialysis patients. *Nephrol Dial Transplant* **19**, 1154-1160 (2004).
35. Mroczo, B., Groblewska, M., Gryko, M., Kedra, B. & Szmitkowski, M. Diagnostic usefulness of serum interleukin 6 (IL-6) and C-reactive protein (CRP) in the differentiation between pancreatic cancer and chronic pancreatitis. *J Clin Lab Anal* **24**, 256-261 (2010).
36. Fraunberger, P., *et al.* Prognostic value of interleukin 6, procalcitonin, and C-reactive protein levels in intensive care unit patients during first increase of fever. *Shock* **26**, 10-12 (2006).
37. Pihusch, M., *et al.* Evaluation of C-reactive protein, interleukin-6, and procalcitonin levels in allogeneic hematopoietic stem cell recipients. *Eur J Haematol* **76**, 93-101 (2006).
38. Rose-John, S., Winthrop, K. & Calabrese, L. The role of IL-6 in host defence against infections: immunobiology and clinical implications. *Nat Rev Rheumatol* **13**, 399-409 (2017).
39. Schett, G., Elewaut, D., McInnes, I.B., Dayer, J.M. & Neurath, M.F. How cytokine networks fuel inflammation: Toward a cytokine-based disease taxonomy. *Nat Med* **19**, 822-824 (2013).
40. McInnes, I.B. & Schett, G. Pathogenetic insights from the treatment of rheumatoid arthritis. *Lancet* **389**, 2328-2337 (2017).
41. McInnes, I.B. & Schett, G. The pathogenesis of rheumatoid arthritis. *N Engl J Med* **365**, 2205-2219 (2011).
42. Calabrese, L.H. & Rose-John, S. IL-6 biology: implications for clinical targeting in rheumatic disease. *Nat Rev Rheumatol* **10**, 720-727 (2014).

43. Garbers, C., Heink, S., Korn, T. & Rose-John, S. Interleukin-6: designing specific therapeutics for a complex cytokine. *Nat Rev Drug Discov* **17**, 395-412 (2018).
44. Jones, S.A. Directing transition from innate to acquired immunity: defining a role for IL-6. *J Immunol* **175**, 3463-3468 (2005).
45. Boulanger, M.J., Chow, D.C., Brevnova, E.E. & Garcia, K.C. Hexameric structure and assembly of the interleukin-6/IL-6 alpha-receptor/gp130 complex. *Science* **300**, 2101-2104 (2003).
46. Boulanger, M.J. & Garcia, K.C. Shared cytokine signaling receptors: structural insights from the gp130 system. *Adv Protein Chem* **68**, 107-146 (2004).
47. Ernst, M. & Jenkins, B.J. Acquiring signalling specificity from the cytokine receptor gp130. *Trends Genet* **20**, 23-32 (2004).
48. Schroers, A., *et al.* Dynamics of the gp130 cytokine complex: a model for assembly on the cellular membrane. *Protein Sci* **14**, 783-790 (2005).
49. Jones, S.A., Scheller, J. & Rose-John, S. Therapeutic strategies for the clinical blockade of IL-6/gp130 signaling. *J Clin Invest* **121**, 3375-3383 (2011).
50. Kopf, M., *et al.* Impaired immune and acute-phase responses in interleukin-6-deficient mice. *Nature* **368**, 339-342 (1994).
51. Jones, G.W., *et al.* Loss of CD4+ T cell IL-6R expression during inflammation underlines a role for IL-6 trans signaling in the local maintenance of Th17 cells. *J Immunol* **184**, 2130-2139 (2010).
52. Harbour, S.N., *et al.* TH17 cells require ongoing classic IL-6 receptor signaling to retain transcriptional and functional identity. *Sci Immunol* **5**(2020).
53. Dienz, O., *et al.* Essential role of IL-6 in protection against H1N1 influenza virus by promoting neutrophil survival in the lung. *Mucosal Immunol* **5**, 258-266 (2012).
54. McFarland-Mancini, M.M., *et al.* Differences in wound healing in mice with deficiency of IL-6 versus IL-6 receptor. *J Immunol* **184**, 7219-7228 (2010).
55. Sommer, J., *et al.* Interleukin-6, but not the interleukin-6 receptor plays a role in recovery from dextran sodium sulfate-induced colitis. *Int J Mol Med* **34**, 651-660 (2014).
56. Stumhofer, J.S., *et al.* A role for IL-27p28 as an antagonist of gp130-mediated signaling. *Nat Immunol* **11**, 1119-1126 (2010).
57. Garbers, C., *et al.* An interleukin-6 receptor-dependent molecular switch mediates signal transduction of the IL-27 cytokine subunit p28 (IL-30) via a gp130 protein receptor homodimer. *J Biol Chem* **288**, 4346-4354 (2013).
58. Crabe, S., *et al.* The IL-27 p28 subunit binds cytokine-like factor 1 to form a cytokine regulating NK and T cell activities requiring IL-6R for signaling. *J Immunol* **183**, 7692-7702 (2009).
59. Schuster, B., *et al.* Signaling of human ciliary neurotrophic factor (CNTF) revisited. The interleukin-6 receptor can serve as an alpha-receptor for CTNF. *J Biol Chem* **278**, 9528-9535 (2003).
60. Zhang, C., *et al.* CD5 Binds to Interleukin-6 and Induces a Feed-Forward Loop with the Transcription Factor STAT3 in B Cells to Promote Cancer. *Immunity* **44**, 913-923 (2016).
61. Dinarello, C. Historical insights into cytokines. *Eur J Immunol* **37**, S34-45 (2007).
62. Jones, S.A., Horiuchi, S., Topley, N., Yamamoto, N. & Fuller, G.M. The soluble interleukin 6 receptor: mechanisms of production and implications in disease. *FASEB J* **15**, 43-58 (2001).
63. Novick, D., Engelmann, H., Wallach, D. & Rubinstein, M. Soluble cytokine receptors are present in normal human urine. *J Exp Med* **170**, 1409-1414 (1989).
64. Honda, M., *et al.* Human soluble IL-6 receptor: its detection and enhanced release by HIV infection. *J Immunol* **148**, 2175-2180 (1992).

65. Gearing, D.P. & Cosman, D. Homology of the p40 subunit of natural killer cell stimulatory factor (NKSF) with the extracellular domain of the interleukin-6 receptor. *Cell* **66**, 9-10 (1991).
66. Chehboun S, L.-C.J., Pasquin S, Meliani Y, Meddah B, Ferlin W, Sharma M, Tormo A, Masson JF, Gauchat JF. Epstein-Barr virus-induced gene 3 (EBI3) can mediate IL-6 trans-signaling. *J Biol Chem*. **292**, 6644-6656. (2017).
67. Atreya, R., *et al.* Blockade of interleukin 6 trans signaling suppresses T-cell resistance against apoptosis in chronic intestinal inflammation: evidence in crohn disease and experimental colitis in vivo. *Nat Med* **6**, 583-588 (2000).
68. Modur, V., Li, Y., Zimmerman, G.A., Prescott, S.M. & McIntyre, T.M. Retrograde inflammatory signaling from neutrophils to endothelial cells by soluble interleukin-6 receptor alpha. *J Clin Invest* **100**, 2752-2756 (1997).
69. Nowell, M.A., *et al.* Soluble IL-6 receptor governs IL-6 activity in experimental arthritis: blockade of arthritis severity by soluble glycoprotein 130. *J Immunol* **171**, 3202-3209 (2003).
70. Nowell, M.A., *et al.* Therapeutic targeting of IL-6 trans signaling counteracts STAT3 control of experimental inflammatory arthritis. *J Immunol* **182**, 613-622 (2009).
71. McLoughlin, R.M., *et al.* Differential regulation of neutrophil-activating chemokines by IL-6 and its soluble receptor isoforms. *J Immunol* **172**, 5676-5683 (2004).
72. McLoughlin, R.M., *et al.* IL-6 trans-signaling via STAT3 directs T cell infiltration in acute inflammation. *Proc Natl Acad Sci U S A* **102**, 9589-9594 (2005).
73. Catar, R., *et al.* IL-6 Trans-Signaling Links Inflammation with Angiogenesis in the Peritoneal Membrane. *J Am Soc Nephrol* **28**, 1188-1199 (2017).
74. Chalaris, A., Garbers, C., Rabe, B., Rose-John, S. & Scheller, J. The soluble Interleukin 6 receptor: generation and role in inflammation and cancer. *Eur J Cell Biol* **90**, 484-494 (2011).
75. Dimitrov, S., *et al.* Sleep enhances IL-6 trans-signaling in humans. *FASEB J* **20**, 2174-2176 (2006).
76. Escrig, A., *et al.* IL-6 Trans-Signaling in the Brain Influences the Metabolic Phenotype of the 3xTg-AD Mouse Model of Alzheimer's Disease. *Cells* **9**(2020).
77. Fielding, C.A., *et al.* Interleukin-6 signaling drives fibrosis in unresolved inflammation. *Immunity* **40**, 40-50 (2014).
78. Garbers, C. & Rose-John, S. Genetic IL-6R variants and therapeutic inhibition of IL-6 receptor signalling in COVID-19. *Lancet Rheumatol* **3**, e96-e97 (2021).
79. Jones, S.A., Horiuchi, S., Novick, D., Yamamoto, N. & Fuller, G.M. Shedding of the soluble IL-6 receptor is triggered by Ca²⁺ mobilization, while basal release is predominantly the product of differential mRNA splicing in THP-1 cells. *Eur J Immunol* **28**, 3514-3522 (1998).
80. Schmidt, S., *et al.* ADAM17 is required for EGF-R-induced intestinal tumors via IL-6 trans-signaling. *J Exp Med* (2018).
81. Schumacher, N. & Rose-John, S. ADAM17 Activity and IL-6 Trans-Signaling in Inflammation and Cancer. *Cancers (Basel)* **11**(2019).
82. Doganci, A., *et al.* The IL-6R alpha chain controls lung CD4⁺CD25⁺ Treg development and function during allergic airway inflammation in vivo. *J Clin Invest* **115**, 313-325 (2005).
83. Coles, B., *et al.* Classic interleukin-6 receptor signaling and interleukin-6 trans-signaling differentially control angiotensin II-dependent hypertension, cardiac signal transducer and activator of transcription-3 activation, and vascular hypertrophy in vivo. *Am J Pathol* **171**, 315-325 (2007).

84. Dixit, A., *et al.* Frontline Science: Proliferation of Ly6C(+) monocytes during urinary tract infections is regulated by IL-6 trans-signaling. *J Leukoc Biol* **103**, 13-22 (2018).
85. Chalaris, A., *et al.* Apoptosis is a natural stimulus of IL6R shedding and contributes to the proinflammatory trans-signaling function of neutrophils. *Blood* **110**, 1748-1755 (2007).
86. Heink, S., *et al.* Trans-presentation of IL-6 by dendritic cells is required for the priming of pathogenic TH17 cells. *Nat Immunol* **18**, 74-85 (2017).
87. Burkett, P.R., *et al.* Coordinate expression and trans presentation of interleukin (IL)-15Ralpha and IL-15 supports natural killer cell and memory CD8+ T cell homeostasis. *J Exp Med* **200**, 825-834 (2004).
88. Xing, Z., *et al.* IL-6 is an antiinflammatory cytokine required for controlling local or systemic acute inflammatory responses. *J Clin Invest* **101**, 311-320 (1998).
89. Lauder, S.N., *et al.* Interleukin-6 limits influenza-induced inflammation and protects against fatal lung pathology. *Eur J Immunol* **43**, 2613-2625 (2013).
90. Taniguchi K, W.L., Grivennikov SI, de Jong PR, Lian I, Yu FX, Wang K, Ho SB, Boland BS, Chang JT, Sandborn WJ, Hardiman G, Raz E, Maehara Y, Yoshimura A, Zucman-Rossi J, Guan KL, Karin M. . A gp130-Src-YAP module links inflammation to epithelial regeneration. . *Nature*. **519**, 57-62. (2015).
91. Sims, N.A., *et al.* Glycoprotein 130 regulates bone turnover and bone size by distinct downstream signaling pathways. *J Clin Invest* **113**, 379-389 (2004).
92. Holland, S.M., *et al.* STAT3 mutations in the hyper-IgE syndrome. *N Engl J Med* **357**, 1608-1619 (2007).
93. Kreins, A.Y., *et al.* Human TYK2 deficiency: Mycobacterial and viral infections without hyper-IgE syndrome. *J Exp Med* **212**, 1641-1662 (2015).
94. Freeman, A.F. & Holland, S.M. Clinical manifestations of hyper IgE syndromes. *Dis Markers* **29**, 123-130 (2010).
95. Puel, A., *et al.* Recurrent staphylococcal cellulitis and subcutaneous abscesses in a child with autoantibodies against IL-6. *J Immunol* **180**, 647-654 (2008).
96. Spencer, S., *et al.* Loss of the interleukin-6 receptor causes immunodeficiency, atopy, and abnormal inflammatory responses. *J Exp Med* **216**, 1986-1998 (2019).
97. Chen, Y.H., *et al.* Absence of GP130 cytokine receptor signaling causes extended Stuve-Wiedemann syndrome. *J Exp Med* **217**(2020).
98. Schwerd, T., *et al.* A biallelic mutation in IL6ST encoding the GP130 co-receptor causes immunodeficiency and craniosynostosis. *J Exp Med* **214**, 2547-2562 (2017).
99. Shahin, T., *et al.* Selective loss of function variants in IL6ST cause Hyper-IgE syndrome with distinct impairments of T-cell phenotype and function. *Haematologica* **104**, 609-621 (2019).
100. Schmidt-Arras, D. & Rose-John, S. IL-6 pathway in the liver: From physiopathology to therapy. *J Hepatol* **64**, 1403-1415 (2016).
101. Drucker, C., Gewiese, J., Malchow, S., Scheller, J. & Rose-John, S. Impact of interleukin-6 classic- and trans-signaling on liver damage and regeneration. *J Autoimmun* **34**, 29-37 (2010).
102. O'Brien, C.A., Gubrij, I., Lin, S.C., Saylor, R.L. & Manolagas, S.C. STAT3 activation in stromal/osteoblastic cells is required for induction of the receptor activator of NF-kappaB ligand and stimulation of osteoclastogenesis by gp130-utilizing cytokines or interleukin-1 but not 1,25-dihydroxyvitamin D3 or parathyroid hormone. *J Biol Chem* **274**, 19301-19308 (1999).
103. Tilg, H., Moschen, A.R., Kaser, A., Pines, A. & Dotan, I. Gut, inflammation and osteoporosis: basic and clinical concepts. *Gut* **57**, 684-694 (2008).

104. Poli, V., *et al.* Interleukin-6 deficient mice are protected from bone loss caused by estrogen depletion. *EMBO J* **13**, 1189-1196 (1994).
105. Palmqvist, P., Persson, E., Conaway, H.H. & Lerner, U.H. IL-6, leukemia inhibitory factor, and oncostatin M stimulate bone resorption and regulate the expression of receptor activator of NF-kappa B ligand, osteoprotegerin, and receptor activator of NF-kappa B in mouse calvariae. *J Immunol* **169**, 3353-3362 (2002).
106. Liu, H., *et al.* Histological Evidence of Increased Osteoclast Cell Number and Asymmetric Bone Resorption Activity in the Tibiae of Interleukin-6-Deficient Mice. *J Histochem Cytochem* **62**, 556-564 (2014).
107. Grivennikov, S., *et al.* IL-6 and Stat3 are required for survival of intestinal epithelial cells and development of colitis-associated cancer. *Cancer Cell* **15**, 103-113 (2009).
108. Taniguchi, K., *et al.* A gp130-Src-YAP module links inflammation to epithelial regeneration. *Nature* **519**, 57-62 (2015).
109. Taniguchi K, K.M. IL-6 and related cytokines as the critical lynchpins between inflammation and cancer. *Semin Immunol.* **26**, 54-74. (2014).
110. Schiff, M.H., *et al.* Integrated safety in tocilizumab clinical trials. *Arthritis Res Ther* **13**, R141 (2011).
111. Hurst, S.M., *et al.* Il-6 and its soluble receptor orchestrate a temporal switch in the pattern of leukocyte recruitment seen during acute inflammation. *Immunity* **14**, 705-714 (2001).
112. Romano, M., *et al.* Role of IL-6 and its soluble receptor in induction of chemokines and leukocyte recruitment. *Immunity* **6**, 315-325 (1997).
113. Weissenbach, M., *et al.* Interleukin-6 is a direct mediator of T cell migration. *Eur J Immunol* **34**, 2895-2906 (2004).
114. Wright, H.L., Cross, A.L., Edwards, S.W. & Moots, R.J. Effects of IL-6 and IL-6 blockade on neutrophil function in vitro and in vivo. *Rheumatology (Oxford)* **53**, 1321-1331 (2014).
115. Dufour, A.M., Alvarez, M., Russo, B. & Chizzolini, C. Interleukin-6 and Type-I Collagen Production by Systemic Sclerosis Fibroblasts Are Differentially Regulated by Interleukin-17A in the Presence of Transforming Growth Factor-Beta 1. *Front Immunol* **9**, 1865 (2018).
116. Tang, A. & Gilchrist, B.A. Regulation of keratinocyte growth factor gene expression in human skin fibroblasts. *J Dermatol Sci* **11**, 41-50 (1996).
117. Kobayashi, T., *et al.* Bidirectional role of IL-6 signal in pathogenesis of lung fibrosis. *Respir Res* **16**, 99 (2015).
118. Johnson, B.Z., Stevenson, A.W., Prele, C.M., Fear, M.W. & Wood, F.M. The Role of IL-6 in Skin Fibrosis and Cutaneous Wound Healing. *Biomedicines* **8**(2020).
119. Dunkin, C.S.J., *et al.* Scarring occurs at a critical depth of skin injury: precise measurement in a graduated dermal scratch in human volunteers. *Plast Reconstr Surg* **119**, 1722-1732 (2007).
120. Ghazizadeh, M. Essential role of IL-6 signaling pathway in keloid pathogenesis. *J Nippon Med Sch* **74**, 11-22 (2007).
121. Ghazizadeh, M., Tosa, M., Shimizu, H., Hyakusoku, H. & Kawanami, O. Functional implications of the IL-6 signaling pathway in keloid pathogenesis. *J Invest Dermatol* **127**, 98-105 (2007).
122. Toshitani, A., Ansel, J.C., Chan, S.C., Li, S.H. & Hanifin, J.M. Increased interleukin 6 production by T cells derived from patients with atopic dermatitis. *J Invest Dermatol* **100**, 299-304 (1993).
123. Fremphah, B., Luckett-Chastain, L.R. & Gallucci, R.M. IL-6 Negatively Regulates IL-22Alpha Expression on Epidermal Keratinocytes: Implications for Irritant Contact Dermatitis. *J Immunol Res* **2019**, 6276254 (2019).

124. Navarini, A.A., French, L.E. & Hofbauer, G.F. Interrupting IL-6-receptor signaling improves atopic dermatitis but associates with bacterial superinfection. *J Allergy Clin Immunol* **128**, 1128-1130 (2011).
125. Gossec, L., Del Castillo-Pinol, N., Roux, C. & Dougados, M. Lack of efficacy of tocilizumab in severe axial refractory spondyloarthritis: a report of 5 patients. *Clin Exp Rheumatol* **30**, 805 (2012).
126. Sieper, J., *et al.* Sarilumab for the treatment of ankylosing spondylitis: results of a Phase II, randomised, double-blind, placebo-controlled study (ALIGN). *Ann Rheum Dis* **74**, 1051-1057 (2015).
127. Grasland, A., Mahe, E., Raynaud, E. & Mahe, I. Psoriasis onset with tocilizumab. *Joint Bone Spine* **80**, 541-542 (2013).
128. Saito, Y., Hayashi, S., Gonmori, T., Hamasaki, Y. & Igawa, K. Interrupting tocilizumab therapy-induced psoriasis-like eruption in a patient with rheumatoid arthritis and Crohn's disease. *Int J Dermatol* **59**, e159-e160 (2020).
129. Atreya, R. & Neurath, M.F. Involvement of IL-6 in the pathogenesis of inflammatory bowel disease and colon cancer. *Clin Rev Allergy Immunol* **28**, 187-196 (2005).
130. Humes, D.J., *et al.* Visceral hypersensitivity in symptomatic diverticular disease and the role of neuropeptides and low grade inflammation. *Neurogastroenterol Motil* **24**, 318-e163 (2012).
131. Matsumoto, S., *et al.* Essential roles of IL-6 trans-signaling in colonic epithelial cells, induced by the IL-6/soluble-IL-6 receptor derived from lamina propria macrophages, on the development of colitis-associated premalignant cancer in a murine model. *J Immunol* **184**, 1543-1551 (2010).
132. Schreiber, S., *et al.* Therapeutic Interleukin 6 Trans-signaling Inhibition by Olamkicept (sgp130Fc) in Patients With Active Inflammatory Bowel Disease. *Gastroenterology* (2021).
133. Reeh, H., *et al.* Response to IL-6 trans- and IL-6 classic signalling is determined by the ratio of the IL-6 receptor alpha to gp130 expression: fusing experimental insights and dynamic modelling. *Cell Commun Signal* **17**, 46 (2019).
134. Fazel Modares, N., *et al.* IL-6 Trans-signaling Controls Liver Regeneration After Partial Hepatectomy. *Hepatology* **70**, 2075-2091 (2019).
135. Twohig, J.P., *et al.* Activation of naive CD4(+) T cells re-tunes STAT1 signaling to deliver unique cytokine responses in memory CD4(+) T cells. *Nat Immunol* **20**, 458-470 (2019).
136. Teague, T.K., *et al.* Activation-induced inhibition of interleukin 6-mediated T cell survival and signal transducer and activator of transcription 1 signaling. *J Exp Med* **191**, 915-926 (2000).
137. Villar-Fincheira, P., *et al.* Role of Interleukin-6 in Vascular Health and Disease. *Front Mol Biosci* **8**, 641734 (2021).
138. Davies, R., *et al.* The role of interleukin-6 trans-signalling on cardiovascular dysfunction in inflammatory arthritis. *Rheumatology (Oxford)* (2020).
139. Kang, S., *et al.* IL-6 trans-signaling induces plasminogen activator inhibitor-1 from vascular endothelial cells in cytokine release syndrome. *Proc Natl Acad Sci U S A* **117**, 22351-22356 (2020).
140. Klouche, M., Bhakdi, S., Hemmes, M. & Rose-John, S. Novel path to activation of vascular smooth muscle cells: up-regulation of gp130 creates an autocrine activation loop by IL-6 and its soluble receptor. *J Immunol* **163**, 4583-4589 (1999).
141. Wassmann, S., *et al.* Interleukin-6 induces oxidative stress and endothelial dysfunction by overexpression of the angiotensin II type 1 receptor. *Circ Res* **94**, 534-541 (2004).

142. Lopez-Mejias, R. & Gonzalez-Gay, M.A. IL-6: linking chronic inflammation and vascular calcification. *Nat Rev Rheumatol* **15**, 457-459 (2019).
143. Henaut, L. & Massy, Z.A. New insights into the key role of interleukin 6 in vascular calcification of chronic kidney disease. *Nephrol Dial Transplant* **33**, 543-548 (2018).
144. Saatvedt, K., Lindberg, H., Michelsen, S. & Mollnes, T.E. Release of interleukin 6 and activation of complement during and after paediatric cardiopulmonary bypass. Effect of autotransfusion of shed mediastinal blood and ultrafiltration. *Cytokine* **8**, 417-420 (1996).
145. Eriksson, U., *et al.* Interleukin-6-deficient mice resist development of autoimmune myocarditis associated with impaired upregulation of complement C3. *Circulation* **107**, 320-325 (2003).
146. Kurozumi, A., *et al.* IL-6 and sIL-6R induces STAT3-dependent differentiation of human VSMCs into osteoblast-like cells through JMJD2B-mediated histone demethylation of RUNX2. *Bone* **124**, 53-61 (2019).
147. Senchenkova, E.Y., *et al.* Interleukin-6 mediates the platelet abnormalities and thrombogenesis associated with experimental colitis. *Am J Pathol* **183**, 173-181 (2013).
148. Nosaka, M., *et al.* Crucial Involvement of IL-6 in Thrombus Resolution in Mice via Macrophage Recruitment and the Induction of Proteolytic Enzymes. *Front Immunol* **10**, 3150 (2019).
149. Rosa, M., *et al.* A Mendelian randomization study of IL6 signaling in cardiovascular diseases, immune-related disorders and longevity. *NPJ Genom Med* **4**, 23 (2019).
150. Georgakis, M.K., *et al.* Interleukin-6 Signaling Effects on Ischemic Stroke and Other Cardiovascular Outcomes: A Mendelian Randomization Study. *Circ Genom Precis Med* **13**, e002872 (2020).
151. Scheller, J. & Rose-John, S. The interleukin 6 pathway and atherosclerosis. *Lancet* **380**, 338 (2012).
152. Interleukin-6 Receptor Mendelian Randomisation Analysis, C., *et al.* The interleukin-6 receptor as a target for prevention of coronary heart disease: a mendelian randomisation analysis. *Lancet* **379**, 1214-1224 (2012).
153. Collaboration, I.R.G.C.E.R.F., *et al.* Interleukin-6 receptor pathways in coronary heart disease: a collaborative meta-analysis of 82 studies. *Lancet* **379**, 1205-1213 (2012).
154. Boekholdt, S.M. & Stroes, E.S. The interleukin-6 pathway and atherosclerosis. *Lancet* **379**, 1176-1178 (2012).
155. Cai, T., *et al.* Association of Interleukin 6 Receptor Variant With Cardiovascular Disease Effects of Interleukin 6 Receptor Blocking Therapy: A Phenome-Wide Association Study. *JAMA Cardiol* **3**, 849-857 (2018).
156. Jones, S.A., Fraser, D.J., Fielding, C.A. & Jones, G.W. Interleukin-6 in renal disease and therapy. *Nephrol Dial Transplant* **30**, 564-574 (2015).
157. Fabbri, E., *et al.* Energy Metabolism and the Burden of Multimorbidity in Older Adults: Results From the Baltimore Longitudinal Study of Aging. *J Gerontol A Biol Sci Med Sci* **70**, 1297-1303 (2015).
158. Fabbri, E., *et al.* Aging and the burden of multimorbidity: associations with inflammatory and anabolic hormonal biomarkers. *J Gerontol A Biol Sci Med Sci* **70**, 63-70 (2015).
159. Castaneda, S., *et al.* Rapid beneficial effect of the IL-6 receptor blockade on insulin resistance and insulin sensitivity in non-diabetic patients with rheumatoid arthritis. *Clin Exp Rheumatol* **37**, 465-473 (2019).
160. Ellingsgaard, H., Hojman, P. & Pedersen, B.K. Exercise and health — emerging roles of IL-6. *Current Opinion in Physiology* **10**, 49-54 (2019).

161. Lang Lehrskov, L., *et al.* Interleukin-6 Delays Gastric Emptying in Humans with Direct Effects on Glycemic Control. *Cell Metab* **27**, 1201-1211 e1203 (2018).
162. Lehrskov, L.L., *et al.* Effects of Exercise Training and IL-6 Receptor Blockade on Gastric Emptying and GLP-1 Secretion in Obese Humans: Secondary Analyses From a Double Blind Randomized Clinical Trial. *Front Physiol* **10**, 1249 (2019).
163. Wedell-Neergaard, A.S., *et al.* Exercise-Induced Changes in Visceral Adipose Tissue Mass Are Regulated by IL-6 Signaling: A Randomized Controlled Trial. *Cell Metab* **29**, 844-855 e843 (2019).
164. Christensen, R.H., *et al.* The role of exercise combined with tocilizumab in visceral and epicardial adipose tissue and gastric emptying rate in abdominally obese participants: protocol for a randomised controlled trial. *Trials* **19**, 266 (2018).
165. Steensberg, A., *et al.* Production of interleukin-6 in contracting human skeletal muscles can account for the exercise-induced increase in plasma interleukin-6. *J Physiol* **529 Pt 1**, 237-242 (2000).
166. Carey, A.L., *et al.* Interleukin-6 increases insulin-stimulated glucose disposal in humans and glucose uptake and fatty acid oxidation in vitro via AMP-activated protein kinase. *Diabetes* **55**, 2688-2697 (2006).
167. Chowdhury, S., *et al.* Muscle-derived interleukin 6 increases exercise capacity by signaling in osteoblasts. *J Clin Invest* **130**, 2888-2902 (2020).
168. Nishimoto, N., *et al.* Treatment of rheumatoid arthritis with humanized anti-interleukin-6 receptor antibody: a multicenter, double-blind, placebo-controlled trial. *Arthritis Rheum* **50**, 1761-1769 (2004).
169. Smolen, J.S., *et al.* Effect of interleukin-6 receptor inhibition with tocilizumab in patients with rheumatoid arthritis (OPTION study): a double-blind, placebo-controlled, randomised trial. *Lancet* **371**, 987-997 (2008).
170. Maini, R.N., *et al.* Double-blind randomized controlled clinical trial of the interleukin-6 receptor antagonist, tocilizumab, in European patients with rheumatoid arthritis who had an incomplete response to methotrexate. *Arthritis Rheum* **54**, 2817-2829 (2006).
171. Nishimoto, N., *et al.* Humanized anti-interleukin-6 receptor antibody treatment of multicentric Castleman disease. *Blood* **106**, 2627-2632 (2005).
172. Matthews, V.B., *et al.* Interleukin-6-deficient mice develop hepatic inflammation and systemic insulin resistance. *Diabetologia* **53**, 2431-2441 (2010).
173. Wallenius, V., *et al.* Interleukin-6-deficient mice develop mature-onset obesity. *Nat Med* **8**, 75-79 (2002).
174. Ellingsgaard, H., *et al.* Interleukin-6 regulates pancreatic alpha-cell mass expansion. *Proc Natl Acad Sci U S A* **105**, 13163-13168 (2008).
175. Sadagurski, M., *et al.* Human IL6 enhances leptin action in mice. *Diabetologia* **53**, 525-535 (2010).
176. Ellingsgaard, H., *et al.* Interleukin-6 enhances insulin secretion by increasing glucagon-like peptide-1 secretion from L cells and alpha cells. *Nat Med* **17**, 1481-1489 (2011).
177. Timper, K., *et al.* IL-6 Improves Energy and Glucose Homeostasis in Obesity via Enhanced Central IL-6 trans-Signaling. *Cell Rep* **19**, 267-280 (2017).
178. Timper, K., *et al.* Glucose-Dependent Insulinotropic Peptide Stimulates Glucagon-Like Peptide 1 Production by Pancreatic Islets via Interleukin 6, Produced by alpha Cells. *Gastroenterology* **151**, 165-179 (2016).
179. Han, M.S., *et al.* Regulation of adipose tissue inflammation by interleukin 6. *Proc Natl Acad Sci U S A* **117**, 2751-2760 (2020).

180. Whitham, M., *et al.* Adipocyte-specific deletion of IL-6 does not attenuate obesity-induced weight gain or glucose intolerance in mice. *Am J Physiol Endocrinol Metab* **317**, E597-E604 (2019).
181. Xu, E., *et al.* Temporal and tissue-specific requirements for T-lymphocyte IL-6 signalling in obesity-associated inflammation and insulin resistance. *Nat Commun* **8**, 14803 (2017).
182. Ganz, T. Anemia of Inflammation. *N Engl J Med* **381**, 1148-1157 (2019).
183. Fillebeen, C., *et al.* Hepcidin-mediated hypoferremic response to acute inflammation requires a threshold of Bmp6/Hjv/Smad signaling. *Blood* **132**, 1829-1841 (2018).
184. Song, S.N., *et al.* Down-regulation of hepcidin resulting from long-term treatment with an anti-IL-6 receptor antibody (tocilizumab) improves anemia of inflammation in multicentric Castleman disease. *Blood* **116**, 3627-3634 (2010).
185. Pergola, P.E., *et al.* Ziltivekimab for Treatment of Anemia of Inflammation in Patients on Hemodialysis: Results from a Phase 1/2 Multicenter, Randomized, Double-Blind, Placebo-Controlled Trial. *J Am Soc Nephrol* **32**, 211-222 (2021).
186. Choy, E., Ganeshalingam, K., Semb, A.G., Szekanecz, Z. & Nurmohamed, M. Cardiovascular risk in rheumatoid arthritis: recent advances in the understanding of the pivotal role of inflammation, risk predictors and the impact of treatment. *Rheumatology (Oxford)* **53**, 2143-2154 (2014).
187. Genovese, M.C., *et al.* Transaminase Levels and Hepatic Events During Tocilizumab Treatment: Pooled Analysis of Long-Term Clinical Trial Safety Data in Rheumatoid Arthritis. *Arthritis Rheumatol* **69**, 1751-1761 (2017).
188. Ridker, P.M., *et al.* IL-6 inhibition with ziltivekimab in patients at high atherosclerotic risk (RESCUE): a double-blind, randomised, placebo-controlled, phase 2 trial. *Lancet* (2021).
189. Gabay, C., *et al.* Comparison of lipid and lipid-associated cardiovascular risk marker changes after treatment with tocilizumab or adalimumab in patients with rheumatoid arthritis. *Ann Rheum Dis* **75**, 1806-1812 (2016).
190. Kim, S.C., *et al.* Cardiovascular Safety of Tocilizumab Versus Tumor Necrosis Factor Inhibitors in Patients With Rheumatoid Arthritis: A Multi-Database Cohort Study. *Arthritis Rheumatol* **69**, 1154-1164 (2017).
191. Nozawa, T., Imagawa, T. & Ito, S. Coronary-Artery Aneurysm in Tocilizumab-Treated Children with Kawasaki's Disease. *N Engl J Med* **377**, 1894-1896 (2017).
192. Smeeth, L., *et al.* Risk of myocardial infarction and stroke after acute infection or vaccination. *N Engl J Med* **351**, 2611-2618 (2004).
193. White, J.P., *et al.* IL-6 regulation on skeletal muscle mitochondrial remodeling during cancer cachexia in the ApcMin/+ mouse. *Skelet Muscle* **2**, 14 (2012).
194. Yang, R., *et al.* Mitochondrial Ca²⁺(+) and membrane potential, an alternative pathway for Interleukin 6 to regulate CD4 cell effector function. *Elife* **4**(2015).
195. VanderVeen, B.N., *et al.* The regulation of skeletal muscle fatigability and mitochondrial function by chronically elevated interleukin-6. *Exp Physiol* **104**, 385-397 (2019).
196. Fix, D.K., VanderVeen, B.N., Counts, B.R. & Carson, J.A. Regulation of Skeletal Muscle DRP-1 and FIS-1 Protein Expression by IL-6 Signaling. *Oxid Med Cell Longev* **2019**, 8908457 (2019).
197. Abid, H., Ryan, Z.C., Delmotte, P., Sieck, G.C. & Lanza, I.R. Extramyocellular interleukin-6 influences skeletal muscle mitochondrial physiology through canonical JAK/STAT signaling pathways. *FASEB J* **34**, 14458-14472 (2020).
198. Robson-Ansley, P.J., de Milander, L., Collins, M. & Noakes, T.D. Acute interleukin-6 administration impairs athletic performance in healthy, trained male runners. *Can J Appl Physiol* **29**, 411-418 (2004).

199. DellaGioia, N. & Hannestad, J. A critical review of human endotoxin administration as an experimental paradigm of depression. *Neuroscience and biobehavioral reviews* **34**, 130-143 (2010).
200. Raison, C.L., Capuron, L. & Miller, A.H. Cytokines sing the blues: inflammation and the pathogenesis of depression. *Trends in immunology* **27**, 24-31 (2006).
201. Han, Q.Q. & Yu, J. Inflammation: a mechanism of depression? *Neuroscience bulletin* **30**, 515-523 (2014).
202. Fava, M. How can we make measures of psychotic depression symptoms more clinically useful? *Acta psychiatrica Scandinavica* **129**, 161-162 (2014).
203. Chang, T.E., *et al.* Race/Ethnicity and Other Social Determinants of Psychological Well-being and Functioning in Mental Health Clinics. *Journal of health care for the poor and underserved* **25**, 1418-1431 (2014).
204. Leonard, B.E. Impact of inflammation on neurotransmitter changes in major depression: an insight into the action of antidepressants. *Progress in neuro-psychopharmacology & biological psychiatry* **48**, 261-267 (2014).
205. O'Donovan, A. Inflammation and depression: unraveling the complex interplay in inflammatory bowel disease. *Journal of pediatric gastroenterology and nutrition* **58**, 541-542 (2014).
206. Hider, S.L., Tanveer, W., Brownfield, A., Matthey, D.L. & Packham, J.C. Depression in RA patients treated with anti-TNF is common and under-recognized in the rheumatology clinic. *Rheumatology (Oxford)* **48**, 1152-1154 (2009).
207. Cunningham, C. & Hennessy, E. Co-morbidity and systemic inflammation as drivers of cognitive decline: new experimental models adopting a broader paradigm in dementia research. *Alzheimers Res Ther* **7**, 33 (2015).
208. Sipila, T., *et al.* An association analysis of circadian genes in anxiety disorders. *Biological psychiatry* **67**, 1163-1170 (2010).
209. Hodes, G.E., Ménard, C. & Russo, S.J. Integrating Interleukin-6 into depression diagnosis and treatment. *Neurobiology of Stress*.
210. Mota, M.C., Silva, C.M., Balieiro, L.C.T., Fahmy, W.M. & Crispim, C.A. Social jetlag and metabolic control in non-communicable chronic diseases: a study addressing different obesity statuses. *Sci Rep* **7**, 6358 (2017).
211. Alves, M.S., *et al.* Social Jetlag Among Night Workers is Negatively Associated with the Frequency of Moderate or Vigorous Physical Activity and with Energy Expenditure Related to Physical Activity. *J Biol Rhythms* **32**, 83-93 (2017).
212. Jones, S.A., Scheller, J. & Rose-John, S. Therapeutic strategies for the clinical blockade of IL-6/gp130 signaling. *The Journal of clinical investigation* **121**, 3375-3383 (2011).
213. Pitzalis, C., Jones, G.W., Bombardieri, M. & Jones, S.A. Ectopic lymphoid-like structures in infection, cancer and autoimmunity. *Nature reviews. Immunology* **14**, 447-462 (2014).
214. Smolen, J.S., Weinblatt, M.E., Sheng, S., Zhuang, Y. & Hsu, B. Sirukumab, a human anti-interleukin-6 monoclonal antibody: a randomised, 2-part (proof-of-concept and dose-finding), phase II study in patients with active rheumatoid arthritis despite methotrexate therapy. *Annals of the rheumatic diseases* **73**, 1616-1625 (2014).
215. Hsu, B., *et al.* SAT0182 Improvement in Measures of Depressed Mood and Anhedonia, and Fatigue, In a Randomized, Placebo-Controlled, Phase 2 Study of Sirukumab, A Human Anti-Interleukin-6 Antibody, In Patients with Rheumatoid Arthritis. *Annals of the rheumatic diseases* **74**, 720-721 (2015).
216. Tiosano, S., *et al.* The impact of tocilizumab on anxiety and depression in patients with rheumatoid arthritis. *Eur J Clin Invest* **50**, e13268 (2020).

217. Nukina, H., *et al.* Restraint stress elevates the plasma interleukin-6 levels in germ-free mice. *J Neuroimmunol* **115**, 46-52 (2001).
218. Monje, F.J., *et al.* Constant darkness induces IL-6-dependent depression-like behavior through the NF-kappaB signaling pathway. *J Neurosci* **31**, 9075-9083 (2011).
219. Chourbaji, S., *et al.* IL-6 knockout mice exhibit resistance to stress-induced development of depression-like behaviors. *Neurobiol Dis* **23**, 587-594 (2006).
220. Zhang, J.C., *et al.* Blockade of interleukin-6 receptor in the periphery promotes rapid and sustained antidepressant actions: a possible role of gut-microbiota-brain axis. *Transl Psychiatry* **7**, e1138 (2017).
221. Zhang, C., Wu, Z., Zhao, G., Wang, F. & Fang, Y. Identification of IL6 as a susceptibility gene for major depressive disorder. *Sci Rep* **6**, 31264 (2016).
222. Roetker, N.S., *et al.* Multigene interactions and the prediction of depression in the Wisconsin Longitudinal Study. *BMJ Open* **2**(2012).
223. Tartter, M., Hammen, C., Bower, J.E., Brennan, P.A. & Cole, S. Effects of chronic interpersonal stress exposure on depressive symptoms are moderated by genetic variation at IL6 and IL1beta in youth. *Brain Behav Immun* **46**, 104-111 (2015).
224. Cole, S.W., *et al.* Computational identification of gene-social environment interaction at the human IL6 locus. *Proc Natl Acad Sci U S A* **107**, 5681-5686 (2010).
225. Hong, C.J., Yu, Y.W., Chen, T.J. & Tsai, S.J. Interleukin-6 genetic polymorphism and Chinese major depression. *Neuropsychobiology* **52**, 202-205 (2005).
226. Khandaker, G.M., Zammit, S., Burgess, S., Lewis, G. & Jones, P.B. Association between a functional interleukin 6 receptor genetic variant and risk of depression and psychosis in a population-based birth cohort. *Brain Behav Immun* **69**, 264-272 (2018).
227. Garbers, C., *et al.* The interleukin-6 receptor Asp358Ala single nucleotide polymorphism rs2228145 confers increased proteolytic conversion rates by ADAM proteases. *Biochim Biophys Acta* **1842**, 1485-1494 (2014).
228. Hawkins, G.A., *et al.* The IL6R variation Asp(358)Ala is a potential modifier of lung function in subjects with asthma. *J Allergy Clin Immunol* **130**, 510-515 e511 (2012).
229. Biggoggero, M., Gabbriellini, L. & Meroni, P.L. Type I interferon therapy and its role in autoimmunity. *Autoimmunity* **43**, 248-254 (2010).
230. Hoyo-Becerra, C., Schlaak, J.F. & Hermann, D.M. Insights from interferon-alpha-related depression for the pathogenesis of depression associated with inflammation. *Brain, behavior, and immunity* (2014).
231. Nestler, E.J. & Carlezon, W.A., Jr. The mesolimbic dopamine reward circuit in depression. *Biological psychiatry* **59**, 1151-1159 (2006).
232. Felger, J.C., *et al.* Chronic interferon-alpha decreases dopamine 2 receptor binding and striatal dopamine release in association with anhedonia-like behavior in nonhuman primates. *Neuropsychopharmacology* **38**, 2179-2187 (2013).
233. Yokota, S., *et al.* Longterm Safety and Effectiveness of the Anti-interleukin 6 Receptor Monoclonal Antibody Tocilizumab in Patients with Systemic Juvenile Idiopathic Arthritis in Japan. *J Rheumatol* (2014).
234. Liu, H., Luiten, P.G., Eisel, U.L., Dejongste, M.J. & Schoemaker, R.G. Depression after myocardial infarction: TNF-alpha-induced alterations of the blood-brain barrier and its putative therapeutic implications. *Neuroscience and biobehavioral reviews* **37**, 561-572 (2013).
235. Tsuboi, H., *et al.* Serum IL-6 levels and oxidation rate of LDL cholesterol were related to depressive symptoms independent of omega-3 fatty acids among female hospital and nursing home workers in Japan. *J Affect Disord* **249**, 385-393 (2019).

236. Marsland, A.L., Walsh, C., Lockwood, K. & John-Henderson, N.A. The effects of acute psychological stress on circulating and stimulated inflammatory markers: A systematic review and meta-analysis. *Brain Behav Immun* **64**, 208-219 (2017).
237. Rohleder, N., Aringer, M. & Boentert, M. Role of interleukin-6 in stress, sleep, and fatigue. *Ann N Y Acad Sci* **1261**, 88-96 (2012).
238. Girotti, M., Donegan, J.J. & Morilak, D.A. Influence of hypothalamic IL-6/gp130 receptor signaling on the HPA axis response to chronic stress. *Psychoneuroendocrinology* **38**, 1158-1169 (2013).
239. Anderson, G., *et al.* Increased IL-6 trans-signaling in depression: focus on the tryptophan catabolite pathway, melatonin and neuroprogression. *Pharmacol Rep* **65**, 1647-1654 (2013).
240. Voorhees, J.L., *et al.* Prolonged restraint stress increases IL-6, reduces IL-10, and causes persistent depressive-like behavior that is reversed by recombinant IL-10. *PLoS One* **8**, e58488 (2013).
241. Traki, L., *et al.* Responsiveness of the EuroQol EQ-5D and Hospital Anxiety and Depression Scale (HADS) in rheumatoid arthritis patients receiving tocilizumab. *Clin Rheumatol* **33**, 1055-1060 (2014).
242. Gossec, L., Steinberg, G., Rouanet, S. & Combe, B. Fatigue in rheumatoid arthritis: quantitative findings on the efficacy of tocilizumab and on factors associated with fatigue. The French multicentre prospective PEPS Study. *Clin Exp Rheumatol* **33**, 664-670 (2015).
243. Sitenga, J., Aird, G., Ahmed, A. & Silberstein, P.T. Impact of siltuximab on patient-related outcomes in multicentric Castleman's disease. *Patient Relat Outcome Meas* **9**, 35-41 (2018).
244. Sun, Y., *et al.* The effects of interleukin-6 neutralizing antibodies on symptoms of depressed mood and anhedonia in patients with rheumatoid arthritis and multicentric Castleman's disease. *Brain Behav Immun* **66**, 156-164 (2017).
245. Wagner, J.A. Is IL-6 both a cytokine and a neurotrophic factor? *J Exp Med* **183**, 2417-2419 (1996).
246. Kummer, K.K., Zeidler, M., Kalpachidou, T. & Kress, M. Role of IL-6 in the regulation of neuronal development, survival and function. *Cytokine* **144**, 155582 (2021).
247. Erta, M., Quintana, A. & Hidalgo, J. Interleukin-6, a major cytokine in the central nervous system. *Int J Biol Sci* **8**, 1254-1266 (2012).
248. Hirota, H., Kiyama, H., Kishimoto, T. & Taga, T. Accelerated Nerve Regeneration in Mice by upregulated expression of interleukin (IL) 6 and IL-6 receptor after trauma. *J Exp Med* **183**, 2627-2634 (1996).
249. Marz, P., *et al.* Sympathetic neurons can produce and respond to interleukin 6. *Proc Natl Acad Sci U S A* **95**, 3251-3256 (1998).
250. Haggiag, S., Chebath, J. & Revel, M. Induction of myelin gene expression in Schwann cell cultures by an interleukin-6 receptor-interleukin-6 chimera. *FEBS Lett* **457**, 200-204 (1999).
251. Quarta, S., *et al.* Peripheral nerve regeneration and NGF-dependent neurite outgrowth of adult sensory neurons converge on STAT3 phosphorylation downstream of neuropoietic cytokine receptor gp130. *J Neurosci* **34**, 13222-13233 (2014).
252. Stanke, M., *et al.* Target-dependent specification of the neurotransmitter phenotype: cholinergic differentiation of sympathetic neurons is mediated in vivo by gp 130 signaling. *Development* **133**, 141-150 (2006).
253. Rudge, J.S., Eaton, M.J., Mather, P., Lindsay, R.M. & Whittemore, S.R. CNTF induces raphe neuronal precursors to switch from a serotonergic to a cholinergic phenotype in vitro. *Mol Cell Neurosci* **7**, 204-221 (1996).

254. Vereyken, E.J., Bajova, H., Chow, S., de Graan, P.N. & Gruol, D.L. Chronic interleukin-6 alters the level of synaptic proteins in hippocampus in culture and in vivo. *Eur J Neurosci* **25**, 3605-3616 (2007).
255. Liu, A., *et al.* Regulation of TRPM7 Function by IL-6 through the JAK2-STAT3 Signaling Pathway. *PLoS One* **11**, e0152120 (2016).
256. Malsch, P., *et al.* Deletion of interleukin-6 signal transducer gp130 in small sensory neurons attenuates mechanonociception and down-regulates TRPA1 expression. *J Neurosci* **34**, 9845-9856 (2014).
257. Liu, D., *et al.* Inhibition of TRPA1 and IL-6 signal alleviates neuropathic pain following chemotherapeutic bortezomib. *Physiol Res* **68**, 845-855 (2019).
258. Zhao, D., *et al.* Roles of tumor necrosis factor-alpha and interleukin-6 in regulating bone cancer pain via TRPA1 signal pathway and beneficial effects of inhibition of neuro-inflammation and TRPA1. *Mol Pain* **15**, 1744806919857981 (2019).
259. Andratsch, M., *et al.* A key role for gp130 expressed on peripheral sensory nerves in pathological pain. *J Neurosci* **29**, 13473-13483 (2009).
260. Fang, D., *et al.* Interleukin-6-mediated functional upregulation of TRPV1 receptors in dorsal root ganglion neurons through the activation of JAK/PI3K signaling pathway: roles in the development of bone cancer pain in a rat model. *Pain* **156**, 1124-1144 (2015).
261. DeLeo, J.A., Colburn, R.W., Nichols, M. & Malhotra, A. Interleukin-6-mediated hyperalgesia/allodynia and increased spinal IL-6 expression in a rat mononeuropathy model. *J Interferon Cytokine Res* **16**, 695-700 (1996).
262. Zhong, J., Dietzel, I.D., Wahle, P., Kopf, M. & Heumann, R. Sensory impairments and delayed regeneration of sensory axons in interleukin-6-deficient mice. *J Neurosci* **19**, 4305-4313 (1999).
263. Zhou, Y.Q., *et al.* Interleukin-6: an emerging regulator of pathological pain. *J Neuroinflammation* **13**, 141 (2016).
264. Sebba, A. Pain: A Review of Interleukin-6 and Its Roles in the Pain of Rheumatoid Arthritis. *Open Access Rheumatol* **13**, 31-43 (2021).
265. Holzheimer, R.G. & Steinmetz, W. Local and systemic concentrations of pro- and anti-inflammatory cytokines in human wounds. *Eur J Med Res* **5**, 347-355 (2000).
266. Brenn, D., Richter, F. & Schaible, H.G. Sensitization of unmyelinated sensory fibers of the joint nerve to mechanical stimuli by interleukin-6 in the rat: an inflammatory mechanism of joint pain. *Arthritis Rheum* **56**, 351-359 (2007).
267. Ebbinghaus, M., *et al.* Interleukin-6-dependent influence of nociceptive sensory neurons on antigen-induced arthritis. *Arthritis Res Ther* **17**, 334 (2015).
268. Kwok, C.H.T., Learoyd, A.E., Canet-Pons, J., Trang, T. & Fitzgerald, M. Spinal interleukin-6 contributes to central sensitisation and persistent pain hypersensitivity in a model of juvenile idiopathic arthritis. *Brain Behav Immun* **90**, 145-154 (2020).
269. Vazquez, E., *et al.* Spinal interleukin-6 is an amplifier of arthritic pain in the rat. *Arthritis Rheum* **64**, 2233-2242 (2012).
270. Khanna, D., *et al.* Tocilizumab in systemic sclerosis: a randomised, double-blind, placebo-controlled, phase 3 trial. *Lancet Respir Med* **8**, 963-974 (2020).
271. Shaw, S., *et al.* Discovery and characterization of olokizumab: a humanized antibody targeting interleukin-6 and neutralizing gp130-signaling. *MAbs* **6**, 774-782 (2014).
272. Lu, Z.Y., *et al.* High amounts of circulating interleukin (IL)-6 in the form of monomeric immune complexes during anti-IL-6 therapy. Towards a new methodology for measuring overall cytokine production in human in vivo. *Eur J Immunol* **22**, 2819-2824 (1992).

273. Verma, R., *et al.* Probing binding mechanism of interleukin-6 and olokizumab: in silico design of potential lead antibodies for autoimmune and inflammatory diseases. *J Recept Signal Transduct Res* **36**, 601-616 (2016).
274. Nishimoto, N., *et al.* Mechanisms and pathologic significances in increase in serum interleukin-6 (IL-6) and soluble IL-6 receptor after administration of an anti-IL-6 receptor antibody, tocilizumab, in patients with rheumatoid arthritis and Castleman disease. *Blood* **112**, 3959-3964 (2008).
275. Knight, J.M., *et al.* The IL-6 antagonist tocilizumab is associated with worse depression and related symptoms in the medically ill. *Transl Psychiatry* **11**, 58 (2021).
276. Bovijn, J., Lindgren, C.M. & Holmes, M.V. Genetic variants mimicking therapeutic inhibition of IL-6 receptor signaling and risk of COVID-19. *Lancet Rheumatol* **2**, e658-e659 (2020).

Figure Legends–

Figure-1. IL-6 activities beyond the control of immune regulation.

(A) The ancestral IL-6-like system in *Drosophila melanogaster* comprising Unpaired (IL-6-like), Domeless (gp130-like), hopscotch (Janus-activated kinase) and STAT92E (STAT transcription factor) coordinates cytokine-like responses relevant to human physiology. **(B)** Summary of the contributions of IL-6 biology to human health and disease.

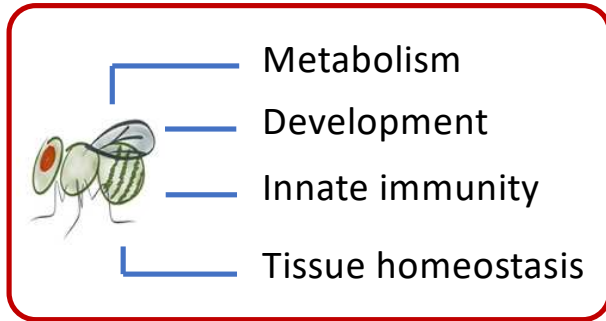
Figure-2. The receptor mechanisms coordinating IL-6 activity.

(A) Cartoons depicting the three modes of IL-6 receptor signalling. Classical IL-6 receptor signalling occurs in cells expressing the cognate IL-6 receptor (IL-6R) and the signal-transducing receptor subunit gp130. Circulating sIL-6R retains the capacity to bind IL-6, forming a cytokine-cytokine receptor complex that can activate cells expressing gp130, but lacking IL-6R (e.g., endothelial cells, fibroblasts, mesothelial cells, and smooth muscle cells). This mode of IL-6 signalling is termed IL-6 trans-signalling. Finally, IL-6 *trans*-presentation represents a juxtacrine-form of cellular activation. Here, IL-6 presented in complex with IL-6R activates cell responses in adjacent cells expressing gp130. **(B)** Focussing on the intracellular pathways coordinated by gp130 activation, the cartoon shows the various signalling intermediates controlled by IL-6 and the cellular responses elicited by their activation.

Figure-3. IL-6 activities relevant to physiology and pathophysiology.

The biological properties of IL-6 are summarised and colour-coded to identify involvements in metabolic processes (blue), links to functional processes (orange) and clinical outcomes (white). Activities are focussed on the IL-6 responses in the liver, brain, bone, muscle, and organs of the HPA axis (hypothalamus, H; pituitary gland, P; adrenal cortex, A). The connecting red lines identify how IL-6 activities coordinated within these organs potentially link to deliver wholesale physiological changes.

A



B

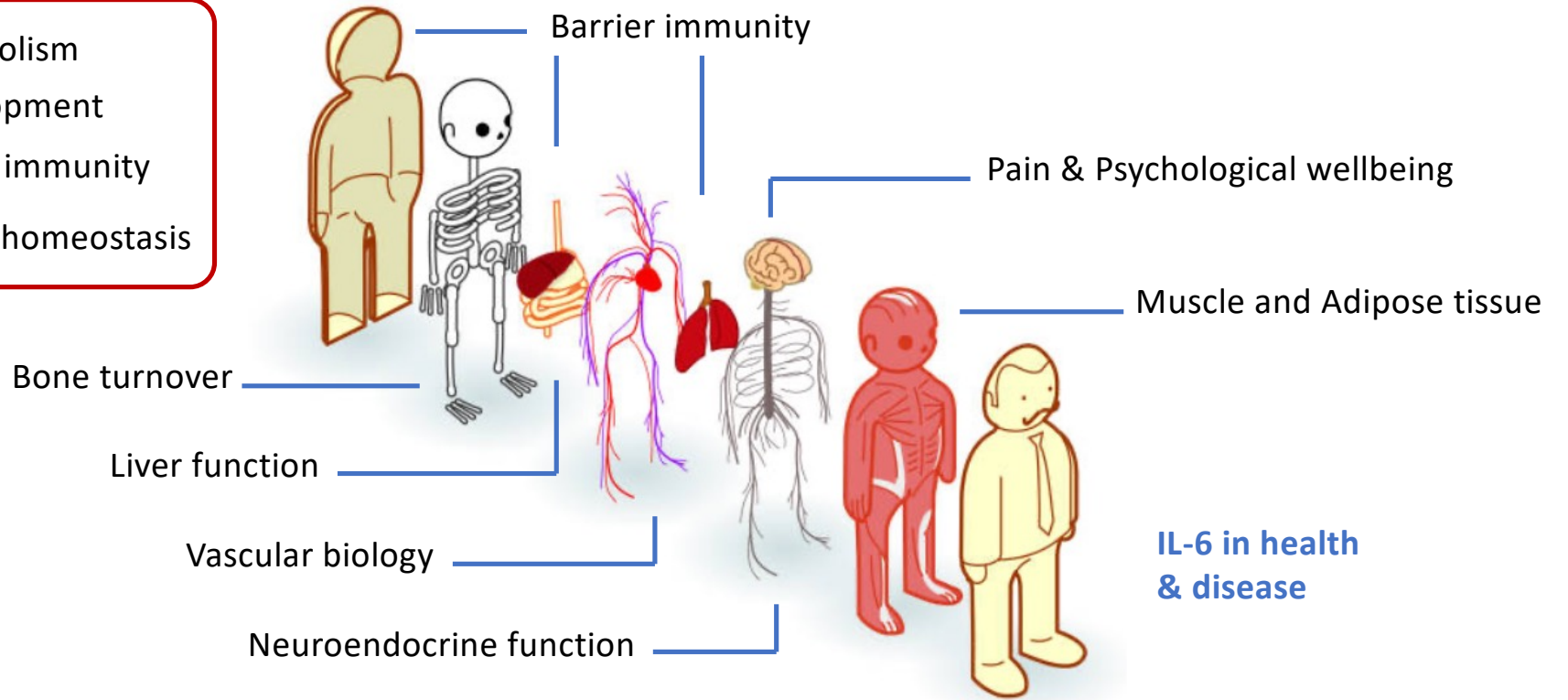
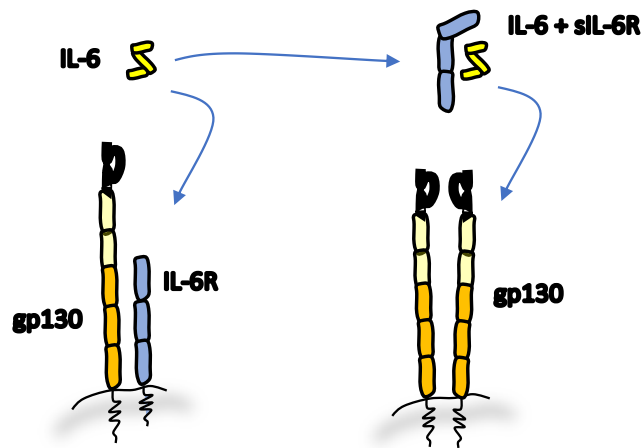


Figure-1

A. Modes of IL-6 signaling

Classical IL-6 receptor signaling



IL-6 trans-presentation

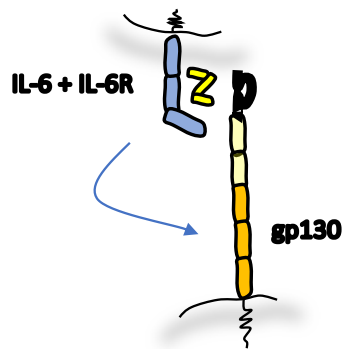
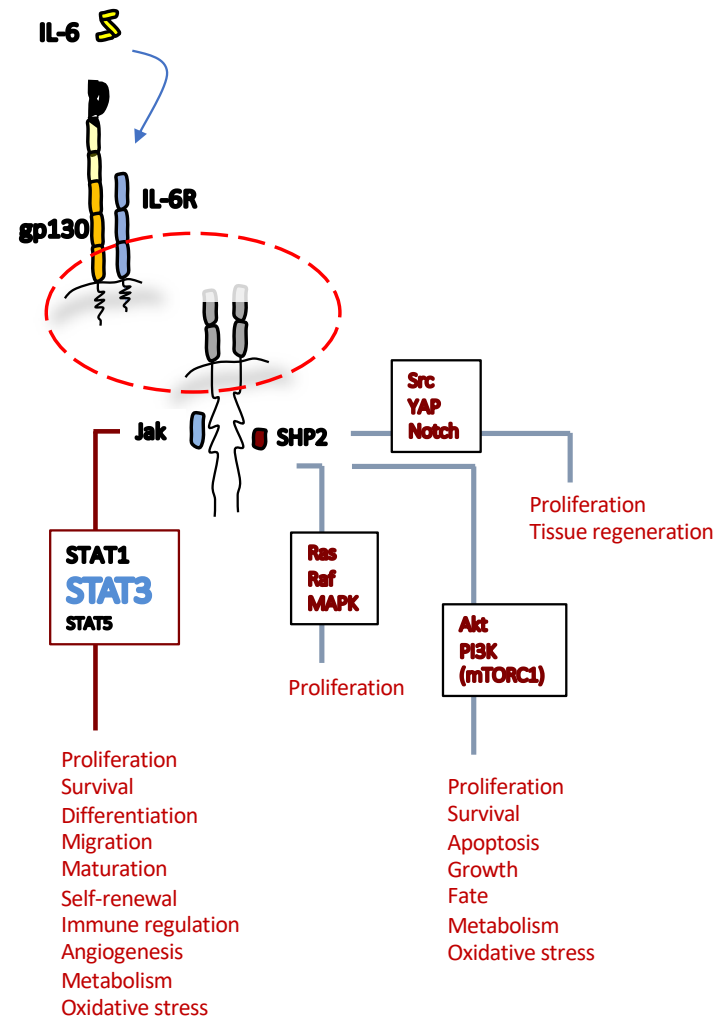


Figure-2

B. IL-6 signaling pathways



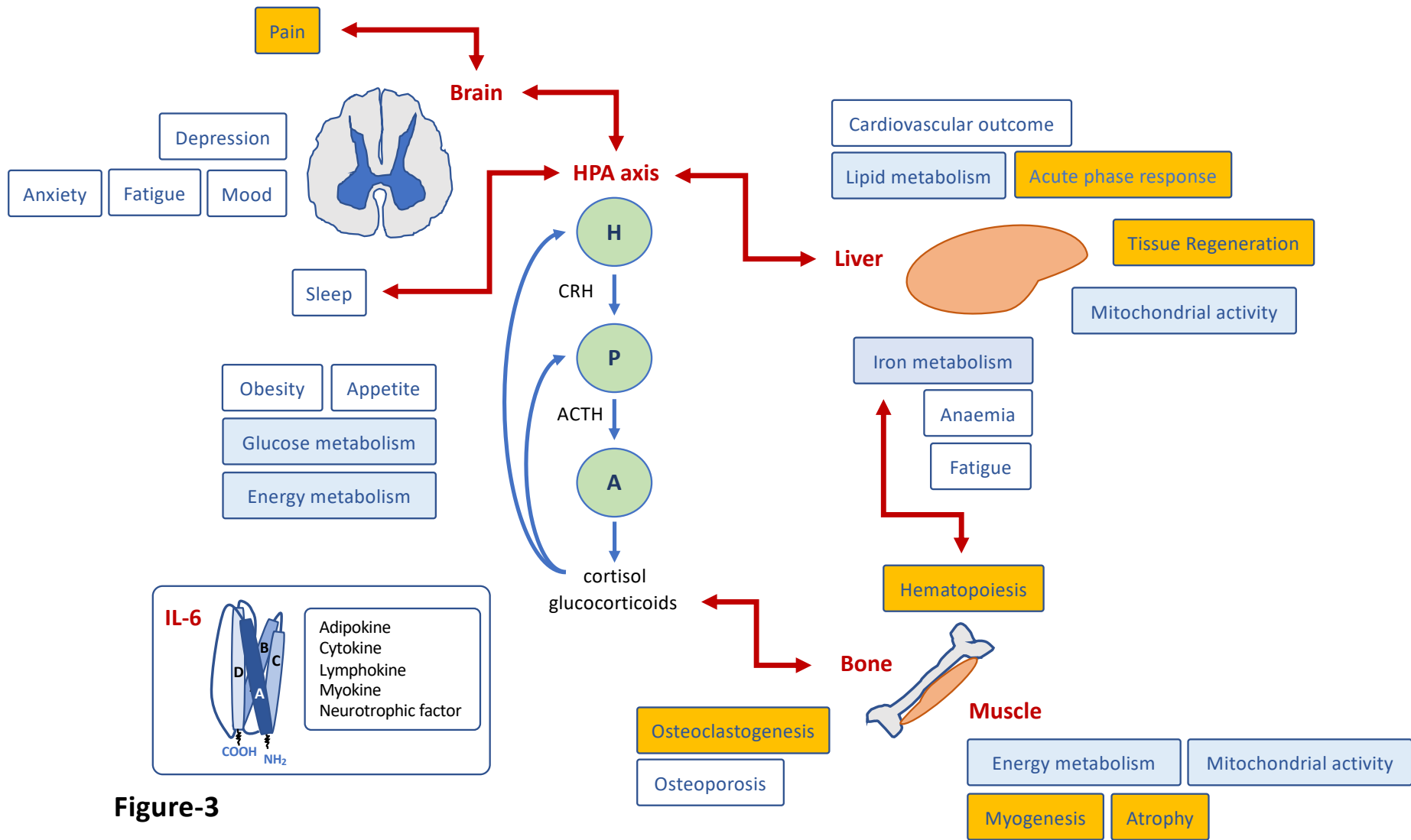


Figure-3