



AMS
American Meteorological Society

Supplemental Material

Journal of Climate

A Decline of Observed Daily Peak Wind Gusts with Distinct Seasonality in Australia, 1941–
2016

<https://doi.org/10.1175/JCLI-D-20-0590.1>

© Copyright 2021 American Meteorological Society (AMS)

For permission to reuse any portion of this work, please contact permissions@ametsoc.org. Any use of material in this work that is determined to be “fair use” under Section 107 of the U.S. Copyright Act (17 USC §107) or that satisfies the conditions specified in Section 108 of the U.S. Copyright Act (17 USC §108) does not require AMS’s permission. Republication, systematic reproduction, posting in electronic form, such as on a website or in a searchable database, or other uses of this material, except as exempted by the above statement, requires written permission or a license from AMS. All AMS journals and monograph publications are registered with the Copyright Clearance Center (<https://www.copyright.com>). Additional details are provided in the AMS Copyright Policy statement, available on the AMS website (<https://www.ametsoc.org/PUBSCopyrightPolicy>).

A decline of observed daily peak wind gusts with distinct seasonality in Australia, 1941-2016

Cesar Azorin-Molina^{1,2*}, Tim R. McVicar^{3,4}, Jose A. Guijarro⁵, Blair Trewin⁶, Andrew J. Frost⁷, Gangfeng Zhang^{2,8,9}, Lorenzo Minola², Seok-Woo Son¹⁰, Kaiqiang Deng² and Deliang Chen²

Surnames (or family names) are underlined

1. Centro de Investigaciones sobre Desertificación, Consejo Superior de Investigaciones Científicas (CIDE-CSIC), Moncada, Valencia, Spain
2. University of Gothenburg, Department of Earth Sciences - Regional Climate Group, Gothenburg, Sweden
3. CSIRO Land and Water, Canberra, ACT, Australia
4. Australian Research Council Centre of Excellence for Climate Extremes, Australian National University, Canberra, Australia
5. State Meteorological Agency (AEMET), Balearic Islands Office, Palma de Mallorca, Spain
6. Australian Bureau of Meteorology, Melbourne, Australia
7. Australian Bureau of Meteorology, Sydney, Australia
8. State Key Laboratory of Earth Surface Processes and Resource Ecology, Beijing Normal University, Beijing 100875, China
9. Academy of Disaster Reduction and Emergency Management, Ministry of Civil Affairs and Ministry of Education, Beijing Normal University, Beijing 100875, China
10. School of Earth and Environmental Sciences, Seoul National University, Seoul, 08826, South Korea.

* *Corresponding author address*: Cesar Azorin-Molina, Centro de Investigaciones sobre Desertificación, Consejo Superior de Investigaciones Científicas (CIDE-CSIC), Ctra. Moncada-Náquera km 4.5, 46113 Moncada, Valencia, Spain

E-mail: cesar.azorin@uv.es

Manuscript re-submitted to *Journal of Climate*

27 November 2020

Table S1. Description of the 548 meteorological stations with homogeneous DPWG measurements across Australia (for locations see Figure 1) during the 76-yr 1941-2016 period. Columns refer to N: number of stations; ID: code from the Bureau of Meteorology; STATION: name of station; LAT.: Latitude in decimal °; LON.: Longitude in decimal °; ELE.: Elevation in meters above sea level. The four columns on the right refer to the regionalization of stations: C: Continentality (C: Coastal; I: Inland); E: Elevation (LES: low-elevation station; MES: mid-elevation station; HES: high-elevation station); L: Latitude (N: North; S: South); and AI: Aridity index (EL: energy limited; EQ: equitant; WL: water-limited)

N°	ID	STATION	LAT.	LON.	ELE.	C	E	L	AI
1	1006	WYNDHAM AERO	128.2	-15.5	3.8	C	LES	N	WL
2	1007	TROUGHTON ISLAND	126.1	-13.8	6	C	LES	N	WL
3	1019	KALUMBURU	126.6	-14.3	23	C	LES	N	WL
4	1020	TRUSCOTT	126.4	-14.1	51	C	LES	N	WL
5	2012	HALLS CREEK METEOROLOGICAL OFFICE	127.7	-18.2	422	I	LES	N	WL
6	2056	KUNUNURRA AERO	128.7	-15.8	44	I	LES	N	WL
7	2064	ARGYLE AERODROME	128.5	-16.6	164	I	LES	N	WL
8	3003	BROOME AIRPORT	122.2	-17.9	7.4	C	LES	N	WL
9	3032	DERBY AERO	123.7	-17.4	6.2	C	LES	N	WL
10	3069	KOOLAN ISLAND	123.8	-16.1	152	C	LES	N	WL
11	3080	CURTIN AERO	123.8	-17.6	77.5	C	LES	N	WL
12	3093	FITZROY CROSSING AERO	125.6	-18.2	114.5	I	LES	N	WL
13	4019	MANDORA	120.8	-19.7	7.5	C	LES	N	WL
14	4032	PORT HEDLAND AIRPORT	118.6	-20.4	6.4	C	LES	N	WL
15	4083	KARRATHA AERO	116.8	-20.7	5.3	C	LES	N	WL
16	4090	ROEBOURNE AERO	117.2	-20.8	10.7	C	LES	N	WL
17	4095	LEGENDRE ISLAND	116.8	-20.4	29	C	LES	N	WL
18	4106	MARBLE BAR	119.7	-21.2	182.3	I	LES	N	WL
19	5007	LEARMONTH AIRPORT	114.1	-22.2	5	C	LES	N	WL
20	5008	MARDIE	116.0	-21.2	11	C	LES	N	WL
21	5016	ONSLow	115.1	-21.6	4	C	LES	N	WL
22	5017	ONSLow AIRPORT	115.1	-21.7	10.5	C	LES	N	WL
23	5058	BARROW ISLAND	115.4	-20.8	62	C	LES	N	WL

24	5061	DAMPIER SALT	116.7	-20.7	6	C	LES	N	WL
25	5094	BARROW ISLAND AIRPORT	115.4	-20.9	6.4	C	LES	N	WL
26	6011	CARNARVON AIRPORT	113.7	-24.9	4	C	LES	N	WL
27	6044	DENHAM	113.5	-25.9	9	C	LES	N	WL
28	6072	EMU CREEK STATION	115.0	-23.0	111	I	LES	N	WL
29	6105	SHARK BAY AIRPORT	113.6	-25.9	33.8	C	LES	N	WL
30	7045	MEEKATHARRA AIRPORT	118.5	-26.6	517	I	MES	N	WL
31	7176	NEWMAN AERO	119.8	-23.4	524	I	MES	N	WL
32	7185	PARABURDOO AERO	117.7	-23.2	423.7	I	LES	N	WL
33	7600	MOUNT MAGNET AERO	117.8	-28.1	407	I	LES	N	WL
34	8051	GERALDTON AIRPORT COMPARISON	114.7	-28.8	33	C	LES	N	WL
35	8251	KALBARRI	114.2	-27.7	6	C	LES	N	WL
36	8290	NORTH ISLAND	113.6	-28.3	2.2	C	LES	N	WL
37	8296	MORAWA AIRPORT	116.0	-29.2	271.4	I	LES	N	WL
38	8297	DALWALLINU	116.7	-30.3	324.5	I	LES	S	WL
39	8315	GERALDTON AIRPORT	114.7	-28.8	29.7	C	LES	N	WL
40	9021	PERTH AIRPORT	116.0	-31.9	15.4	C	LES	S	WL
41	9034	PERTH REGIONAL OFFICE	115.9	-32.0	19	C	LES	S	WL
42	9037	BADGINGARRA RESEARCH STN	115.5	-30.3	275	I	LES	S	WL
43	9038	ROTTNEST ISLAND LIGHTHOUSE	115.5	-32.0	46	C	LES	S	WL
44	9053	PEARCE RAAF	116.0	-31.7	40	C	LES	S	WL
45	9172	JANDAKOT AERO	115.9	-32.1	30	C	LES	S	WL
46	9178	GINGIN AERO	115.9	-31.5	73	C	LES	S	WL
47	9193	ROTTNEST ISLAND	115.5	-32.0	43.1	C	LES	S	WL
48	9215	SWANBOURNE	115.8	-32.0	41	C	LES	S	WL
49	9225	PERTH METRO	115.9	-31.9	24.9	C	LES	S	WL
50	9240	BICKLEY	116.1	-32.0	384	C	LES	S	WL
51	9256	GARDEN ISLAND HSF	115.7	-32.2	6	C	LES	S	WL
52	9518	CAPE LEEUWIN	115.1	-34.4	13	C	LES	S	WL
53	9519	CAPE NATURALISTE	115.0	-33.5	109	C	LES	S	WL
54	9538	DWELLINGUP	116.1	-32.7	267	C	LES	S	WL
55	9542	ESPERANCE AERO	121.8	-33.7	142	C	LES	S	WL
56	9573	MANJIMUP	116.1	-34.3	286.7	I	LES	S	WL
57	9603	BUSSELTON AERO	115.4	-33.7	16.3	C	LES	S	WL
58	9617	BRIDGETOWN	116.1	-33.9	178.7	I	LES	S	WL
59	9741	ALBANY AIRPORT COMPARISON	117.8	-34.9	68	C	LES	S	WL
60	9746	WITCHCLIFFE	115.1	-34.0	80	C	LES	S	WL
61	9789	ESPERANCE	121.9	-33.8	25	C	LES	S	WL
62	9937	BUSSELTON JETTY	115.3	-33.6	3	C	LES	S	WL
63	9961	HOPETOUN NORTH	120.1	-33.9	26	C	LES	S	WL
64	9964	ROCKY GULLY	117.0	-34.6	250	I	LES	S	WL

65	9965	BUNBURY	115.6	-33.4	5.2	C	LES	S	WL
66	9968	SHANNON	116.3	-34.6	210	C	LES	S	WL
67	9977	MANDURAH	115.7	-32.5	3	C	LES	S	WL
68	9994	COLLIE EAST	116.2	-33.4	200	I	LES	S	WL
69	9998	NORTH WALPOLE	116.7	-34.9	73	C	LES	S	WL
70	10286	CUNDERDIN AIRFIELD	117.2	-31.6	216.7	I	LES	S	WL
71	10692	NEWDEGATE RESEARCH STATION	118.8	-33.1	320	I	LES	S	WL
72	10905	JACUP	119.1	-33.9	305	I	LES	S	WL
73	10911	LAKE GRACE	118.5	-33.1	286	I	LES	S	WL
74	10916	KATANNING	117.6	-33.7	320	I	LES	S	WL
75	10917	WANDERING	116.7	-32.7	275	I	LES	S	WL
76	11003	EUCLA	128.9	-31.7	93.1	C	LES	S	WL
77	11004	FORREST AERO	128.1	-30.8	156	I	LES	S	WL
78	11052	FORREST	128.1	-30.8	159	I	LES	S	WL
79	11053	RED ROCKS POINT	127.5	-32.2	3.1	C	LES	S	WL
80	12009	NORSEMAN AERO	121.8	-32.2	262.5	I	LES	S	WL
81	12038	KALGOORLIE-BOULDER AIRPORT	121.5	-30.8	365.3	I	LES	S	WL
82	12044	MUNGLINUP WEST	120.7	-33.6	220	C	LES	S	WL
83	12071	SALMON GUMS RES.STN.	121.6	-33.0	249	I	LES	S	WL
84	12241	LEONORA AERO	121.3	-28.9	370	I	LES	N	WL
85	12305	LAVERTON AERO	122.4	-28.6	464.3	I	LES	N	WL
86	12314	LEINSTER AERO	120.7	-27.8	497	I	LES	N	WL
87	12320	SOUTHERN CROSS AIRFIELD	119.4	-31.2	347.4	I	LES	S	WL
88	13011	WARBURTON AIRFIELD	126.6	-26.1	459	I	LES	N	WL
89	13017	GILES METEOROLOGICAL OFFICE	128.3	-25.0	598	I	MES	N	WL
90	13030	TELFER AERO	122.2	-21.7	291.9	I	LES	N	WL
91	14008	CAPE DON	131.8	-11.3	19	C	LES	N	WL
92	14015	DARWIN AIRPORT	130.9	-12.4	30.4	C	LES	N	EQ
93	14041	MIDDLE POINT	131.3	-12.6	14.1	C	LES	N	WL
94	14142	PIRLANGIMPI AIRPORT	130.4	-11.4	18.3	C	LES	N	EQ
95	14161	DARWIN REGIONAL OFFICE	130.8	-12.5	27.4	C	LES	N	WL
96	14198	JABIRU AIRPORT	132.9	-12.7	26.5	I	LES	N	WL
97	14245	CAPE DON	131.8	-11.3	19	C	LES	N	WL
98	14254	POINT STUART	131.9	-12.2	1	C	LES	N	WL
99	14272	BACHELOR AIRPORT	131.0	-13.1	104	C	LES	N	WL
100	14274	MCCLUER ISLAND	133.0	-11.0	1.4	C	LES	N	WL
101	14277	DUM IN MIRRIE AIRSTRIP	130.4	-12.6	3.5	C	LES	N	WL
102	14400	MANINGRIDA	134.2	-12.0	11	C	LES	N	WL
103	14401	WARRUWI AIRPORT	133.4	-11.7	19.2	C	LES	N	WL
104	14404	MILINGIMBI AIRPORT	134.9	-12.1	15	C	LES	N	WL
105	14405	MANINGRIDA AIRPORT	134.2	-12.1	28.1	C	LES	N	WL

106	14507	ALYANGULA POLICE	136.4	-13.8	20	C	LES	N	WL
107	14508	GOVE AIRPORT	136.8	-12.3	51.6	C	LES	N	WL
108	14513	WALLABY BEACH	136.7	-12.2	7	C	LES	N	WL
109	14517	NGAYAWILI	135.6	-12.0	8.1	C	LES	N	WL
110	14518	GROOTE EYLANDT AIRPORT	136.5	-14.0	13.7	C	LES	N	WL
111	14626	DALY WATERS AIRSTRIP	133.4	-16.3	209.8	I	LES	N	WL
112	14627	BULMAN	134.3	-13.7	103.4	I	LES	N	WL
113	14703	CENTRE ISLAND	136.8	-15.7	12.2	C	LES	N	WL
114	14704	MCARTHUR RIVER MINE AIRPORT	136.1	-16.4	40	I	LES	N	WL
115	14723	BORROLOOLA AIRPORT	136.3	-16.1	16.1	C	LES	N	WL
116	14825	VICTORIA RIVER DOWNS	131.0	-16.4	88.5	I	LES	N	WL
117	14829	LAJAMANU AIRPORT	130.6	-18.3	315.6	I	LES	N	WL
118	14901	DOUGLAS RIVER	131.2	-13.8	42.8	I	LES	N	WL
119	14909	CENTRAL ARNHEM PLATEAU	133.1	-13.3	416	I	LES	N	WL
120	14932	TINDAL RAAF	132.4	-14.5	133.6	I	LES	N	WL
121	14948	PORT KEATS AIRPORT	129.5	-14.2	28	C	LES	N	WL
122	14949	DELAMERE WEAPONS RANGE	131.9	-15.7	221	I	LES	N	WL
123	15131	ELLIOTT	133.5	-17.6	220	I	LES	N	WL
124	15135	TENNANT CREEK AIRPORT	134.2	-19.6	375.7	I	LES	N	WL
125	15590	ALICE SPRINGS AIRPORT	133.9	-23.8	546	I	MES	N	WL
126	15602	JERVOIS	136.1	-22.9	328	I	LES	N	WL
127	15603	KULGERA	133.3	-25.8	508.6	I	MES	N	WL
128	15635	YULARA AIRPORT	131.0	-25.2	492	I	LES	N	WL
129	15643	TERRITORY GRAPE FARM	133.6	-22.5	565.6	I	MES	N	WL
130	15664	WALUNGURRU AIRPORT	129.4	-23.3	454.3	I	LES	N	WL
131	15666	RABBIT FLAT	130.0	-20.2	340	I	LES	N	WL
132	16001	WOOMERA AERODROME	136.8	-31.2	166.6	I	LES	S	WL
133	16090	COOBER PEDY AIRPORT	134.7	-29.0	225	I	LES	N	WL
134	16096	ROXBY DOWNS (OLYMPIC DAM AERODROME)	136.9	-30.5	98.5	I	LES	S	WL
135	16097	ERNABELLA (PUKATJA)	132.2	-26.3	703.2	I	MES	N	WL
136	16098	TARCOOLA AERO	134.6	-30.7	123	I	LES	S	WL
137	17005	LEIGH CREEK AERO	138.4	-30.5	194	I	LES	S	WL
138	17043	OODNADATTA AIRPORT	135.4	-27.6	116.5	I	LES	N	WL
139	17096	MOOMBA	140.2	-28.1	39	I	LES	N	WL
140	17110	LEIGH CREEK AIRPORT	138.4	-30.6	258.8	I	LES	S	WL
141	17123	MOOMBA AIRPORT	140.2	-28.1	37.8	I	LES	N	WL
142	17126	MARREE AERO	138.1	-29.7	50	I	LES	N	WL
143	18012	CEDUNA AMO	133.7	-32.1	15.3	C	LES	S	WL
144	18083	WUDINNA AERO	135.5	-33.0	86.4	I	LES	S	WL
145	18106	NULLARBOR	130.9	-31.4	64	C	LES	S	WL
146	18114	MARALINGA	131.6	-30.2	290	I	LES	S	WL

147	18115	NEPTUNE ISLAND	136.1	-35.3	32	C	LES	S	WL
148	18116	CLEVE AERODROME	136.5	-33.7	175	C	LES	S	WL
149	18120	WHYALLA AERO	137.5	-33.1	9.3	C	LES	S	WL
150	18191	COULTA (COLES POINT)	135.4	-34.4	28	C	LES	S	WL
151	18192	NORTH SHIELDS (PORT LINCOLN AWS)	135.9	-34.6	8.5	C	LES	S	WL
152	18195	MINNIPA PIRSA	135.2	-32.8	165	I	LES	S	WL
153	18201	PORT AUGUSTA AERO	137.7	-32.5	14	C	LES	S	WL
154	18217	CUMMINS AERO	135.7	-34.3	60.1	C	LES	S	WL
155	19066	PORT AUGUSTA POWER STATION	137.8	-32.5	7	C	LES	S	WL
156	20062	YUNTA AIRSTRIP	139.6	-32.6	300	I	LES	S	WL
157	21131	CLARE HIGH SCHOOL	138.6	-33.8	395	I	LES	S	WL
158	21133	SNOWTOWN (RAYVILLE PARK)	138.2	-33.8	109.1	C	LES	S	WL
159	22031	MINLATON AERO	137.5	-34.7	32	C	LES	S	WL
160	22046	EDITHBURGH	137.7	-35.1	6	C	LES	S	WL
161	22049	STENHOUSE BAY	136.9	-35.3	42	C	LES	S	WL
162	22050	KADINA AWS	137.7	-34.0	41.1	C	LES	S	WL
163	22053	MOONTA (WARBURTO POINT)	137.5	-34.0	1	C	LES	S	WL
164	22803	CAPE WILLOUGHBY	138.1	-35.8	55	C	LES	S	WL
165	22823	CAPE BORDA	136.6	-35.8	158	C	LES	S	WL
166	22841	KINGSCOTE AERO	137.5	-35.7	6.2	C	LES	S	WL
167	22843	PARNDANA CFS AWS	137.2	-35.8	165	C	LES	S	WL
168	23000	ADELAIDE WEST TERRACE	138.6	-34.9	40	C	LES	S	WL
169	23013	PARAFIELD AIRPORT	138.6	-34.8	9.5	C	LES	S	WL
170	23015	PENFIELD WEAPONS RESEARCH	138.7	-34.7	24	C	LES	S	WL
171	23034	ADELAIDE AIRPORT	138.5	-35.0	2	C	LES	S	WL
172	23083	EDINBURGH RAAF	138.6	-34.7	16.5	C	LES	S	WL
173	23090	ADELAIDE (KENT TOWN)	138.6	-34.9	48	C	LES	S	WL
174	23109	ADELAIDE AIRPORT (ANEMOMETER SOUTH WEST)	138.5	-35.0	3	C	LES	S	WL
175	23122	ROSEWORTHY AWS	138.7	-34.5	65	C	LES	S	WL
176	23123	ADELAIDE AIRPORT (ANEMOMETER NORTHEAST)	138.5	-34.9	5	C	LES	S	WL
177	23124	ADELAIDE AIRPORT (ANEMOMETER NORTHWEST)	138.5	-34.9	2	C	LES	S	WL
178	23373	NURIOOTPA PIRSA	139.0	-34.5	275	I	LES	S	WL
179	23842	MOUNT LOFTY	138.7	-35.0	685	C	MES	S	WL
180	23875	PARAWA (SECOND VALLEY FOREST AWS)	138.3	-35.6	341	C	LES	S	WL
181	23878	MOUNT CRAWFORD AWS	138.9	-34.7	525	C	MES	S	WL
182	23885	NOARLUNGA	138.5	-35.2	55	C	LES	S	WL
183	23886	SELICKS HILL (MOUNT TERRIBLE RADAR)	138.5	-35.3	385.7	C	LES	S	WL
184	23887	KUITPO FOREST RESERVE	138.7	-35.2	365	C	LES	S	WL
185	23894	HINDMARSH ISLAND AWS	138.8	-35.5	11	C	LES	S	WL
186	24024	LOXTON RESEARCH CENTRE	140.6	-34.4	30.1	I	LES	S	WL
187	24048	RENMARK AERO	140.7	-34.2	31.5	I	LES	S	WL

188	24580	STRATHALBYN RACECOURSE	138.9	-35.3	58	C	LES	S	WL
189	24584	MURRAY BRIDGE (PALLAMANA AERODROME)	139.2	-35.1	45	I	LES	S	WL
190	25557	KEITH (MUNKORA)	140.3	-36.1	27	I	LES	S	WL
191	25562	LAMEROO (AUSTIN PLAINS)	140.5	-35.4	110.1	I	LES	S	WL
192	26021	MOUNT GAMBIER AERO	140.8	-37.7	63	C	LES	S	WL
193	26091	COONAWARRA	140.8	-37.3	57	I	LES	S	WL
194	26095	CAPE JAFFA (THE LIMESTONE)	139.7	-37.0	17	C	LES	S	WL
195	26099	NARACORTE AERODROME	140.7	-37.0	49.7	I	LES	S	WL
196	26100	PADTHAWAY SOUTH	140.5	-36.7	37	I	LES	S	WL
197	26105	ROBE AIRFIELD	139.8	-37.2	3	C	LES	S	WL
198	27022	THURSDAY ISLAND MO	142.2	-10.6	57.6	C	LES	N	EQ
199	27042	WEIPA EASTERN AVE	141.9	-12.6	20	C	LES	N	EQ
200	27045	WEIPA AERO	141.9	-12.7	18	C	LES	N	WL
201	27054	COCONUT ISLAND	143.1	-10.1	3.5	C	LES	N	EQ
202	27058	HORN ISLAND	142.3	-10.6	4	C	LES	N	EQ
203	27073	COEN AIRPORT	143.1	-13.8	159.3	I	LES	N	WL
204	27075	SCHERGER RAAF	142.1	-12.6	39.3	C	LES	N	EQ
205	28004	PALMERVILLE	144.1	-16.0	203.8	I	LES	N	WL
206	28008	LOCKHART RIVER AIRPORT	143.3	-12.8	18.5	C	LES	N	EQ
207	29004	BURKETOWN POST OFFICE	139.5	-17.7	5.5	C	LES	N	WL
208	29009	CLONCURRY AERO	140.5	-20.7	189	I	LES	N	WL
209	29028	KARUMBA AIRPORT	140.8	-17.5	2	C	LES	N	WL
210	29038	KOWANYAMA AIRPORT	141.7	-15.5	9.6	C	LES	N	WL
211	29039	MORNINGTON ISLAND	139.2	-16.7	8.5	C	LES	N	WL
212	29041	NORMANTON POST OFFICE	141.1	-17.7	8.4	C	LES	N	WL
213	29058	JULIA CREEK AIRPORT	141.7	-20.7	122.5	I	LES	N	WL
214	29063	NORMANTON AIRPORT	141.1	-17.7	18.4	C	LES	N	WL
215	29077	BURKETOWN AIRPORT	139.5	-17.7	5.7	C	LES	N	WL
216	29126	MOUNT ISA MINE	139.5	-20.7	381	I	LES	N	WL
217	29127	MOUNT ISA AERO	139.5	-20.7	340.3	I	LES	N	WL
218	29139	SWEERS ISLAND	139.6	-17.1	4	C	LES	N	WL
219	29141	CLONCURRY AIRPORT	140.5	-20.7	186	I	LES	N	WL
220	29167	CENTURY MINE	138.7	-18.8	126.8	I	LES	N	WL
221	30022	HUGHENDEN AIRPORT	144.2	-20.8	316.4	I	LES	N	WL
222	30124	GEORGETOWN AIRPORT	143.5	-18.3	301.8	I	LES	N	WL
223	30161	RICHMOND AIRPORT	143.1	-20.7	206.3	I	LES	N	WL
224	31011	CAIRNS AERO	145.7	-16.9	2.2	C	LES	N	EQ
225	31017	COOKTOWN MISSION STRIP	145.2	-15.4	14	C	LES	N	EQ
226	31037	LOW ISLES LIGHTHOUSE	145.6	-16.4	2.9	C	LES	N	EL
227	31192	GREEN ISLAND	146.0	-16.8	3	C	LES	N	EQ
228	31209	COOKTOWN AIRPORT	145.2	-15.4	4.8	C	LES	N	EQ

229	31210	MAREEBA AIRPORT	145.4	-17.1	471.9	C	LES	N	WL
230	31213	CAPE FLATTERY	145.3	-15.0	18.5	C	LES	N	WL
231	32037	SOUTH JOHNSTONE EXP STN	146.0	-17.6	18.3	C	LES	N	EL
232	32040	TOWNSVILLE AERO	146.8	-19.2	4.3	C	LES	N	WL
233	32141	LUCINDA POINT	146.4	-18.5	10	C	LES	N	EQ
234	33002	AYR DPI RESEARCH STN	147.4	-19.6	17	C	LES	N	WL
235	33007	BOWEN POST OFFICE	148.3	-20.0	6	C	LES	N	WL
236	33045	MACKAY AERO	149.2	-21.2	4.7	C	LES	N	EQ
237	33106	HAMILTON ISLAND AIRPORT	149.0	-20.4	58.7	C	LES	N	EQ
238	33119	MACKAY M.O	149.2	-21.1	30.3	C	LES	N	WL
239	33195	WILLIAMSON	150.2	-22.5	27.6	C	LES	N	WL
240	33210	ST LAWRENCE	149.5	-22.3	9.2	C	LES	N	WL
241	33247	PROSERPINE AIRPORT	148.6	-20.5	19.7	C	LES	N	EQ
242	33257	BOWEN AIRPORT	148.2	-20.0	5	C	LES	N	WL
243	33294	YEPPOON THE ESPLANADE	150.8	-23.1	5.5	C	LES	N	WL
244	33295	ALVA BEACH	147.5	-19.5	7.5	C	LES	N	WL
245	33307	WOOLSHED	146.5	-19.4	556	C	MES	N	WL
246	33308	SAMUEL HILL AERO	150.7	-22.7	31	C	LES	N	EQ
247	35124	CLERMONT AIRPORT	147.6	-22.8	270.3	I	LES	N	WL
248	35129	ROLLESTON AIRPORT	148.6	-24.5	219.5	I	LES	N	WL
249	35139	LOCHINGTON	147.5	-23.9	267.2	I	LES	N	WL
250	35264	EMERALD AIRPORT	148.2	-23.6	189.4	I	LES	N	WL
251	36031	LONGREACH AERO	144.3	-23.4	192.2	I	LES	N	WL
252	36034	BLACKALL AIRPORT	145.4	-24.4	281.3	I	LES	N	WL
253	37010	CAMOOWEAL TOWNSHIP	138.1	-19.9	231.2	I	LES	N	WL
254	37034	THE MONUMENT AIRPORT	139.9	-21.8	288.4	I	LES	N	WL
255	37036	TREPELL AIRPORT	140.9	-21.8	266.2	I	LES	N	WL
256	37039	WINTON AIRPORT	143.1	-22.4	192.2	I	LES	N	WL
257	38026	BIRDSVILLE AIRPORT	139.3	-25.9	46.6	I	LES	N	WL
258	39015	BUNDABERG POST OFFICE	152.3	-24.9	14	C	LES	N	WL
259	39059	LADY ELLIOT ISLAND	152.7	-24.1	3.6	C	LES	N	WL
260	39066	GAYNDAH AIRPORT	151.6	-25.6	110.9	I	LES	N	WL
261	39083	ROCKHAMPTON AERO	150.5	-23.4	10.4	C	LES	N	WL
262	39085	SANDY CAPE LIGHTHOUSE	153.2	-24.7	99.1	C	LES	N	WL
263	39089	THANGOOL AIRPORT	150.6	-24.5	193.1	I	LES	N	WL
264	39122	HERON ISLAND RES STN	151.9	-23.4	3.3	C	LES	N	WL
265	39123	GLADSTONE RADAR	151.3	-23.9	74.5	C	LES	N	WL
266	39128	BUNDABERG AERO	152.3	-24.9	30.8	C	LES	N	WL
267	39304	HERON ISLAND	151.9	-23.4	8	C	LES	N	WL
268	39314	SEVENTEEN SEVENTY	151.9	-24.2	41	C	LES	N	WL
269	39322	RUNDLE ISLAND	151.3	-23.5	19.8	C	LES	N	WL

270	39326	GLADSTONE AIRPORT	151.2	-23.9	16.6	C	LES	N	WL
271	40004	AMBERLEY AMO	152.7	-27.6	24.2	C	LES	N	WL
272	40040	CALOUNDRA SIGNAL STATION	153.2	-26.8	46	C	LES	N	EQ
273	40043	CAPE MORETON LIGHTHOUSE	153.5	-27.0	99.9	C	LES	N	EQ
274	40068	DOUBLE ISLAND POINT LIGHTHOUSE	153.2	-25.9	95.6	C	LES	N	EQ
275	40082	UNIVERSITY OF QUEENSLAND GATTON	152.3	-27.5	89	I	LES	N	WL
276	40093	GYMPIE	152.6	-26.2	64.5	C	LES	N	WL
277	40126	MARYBOROUGH	152.7	-25.5	9	C	LES	N	WL
278	40211	ARCHERFIELD AIRPORT	153.0	-27.6	12.5	C	LES	N	WL
279	40214	BRISBANE REGIONAL OFFICE	153.0	-27.5	38	C	LES	N	WL
280	40223	BRISBANE AERO	153.1	-27.4	4	C	LES	N	WL
281	40284	BEERBURRUM FOREST STATION	153.0	-27.0	48	C	LES	N	EQ
282	40405	HERVEY BAY AIRPORT	152.9	-25.3	13	C	LES	N	WL
283	40555	TOOLARA (KELLY)	152.9	-26.0	143	C	LES	N	WL
284	40651	JIMNA FORESTRY	152.5	-26.7	523	I	MES	N	WL
285	40717	COOLANGATTA	153.5	-28.2	4	C	LES	N	EQ
286	40764	GOLD COAST SEAWAY	153.4	-27.9	3	C	LES	N	EQ
287	40842	BRISBANE AERO	153.1	-27.4	4.5	C	LES	N	WL
288	40861	SUNSHINE COAST AIRPORT	153.1	-26.6	3.3	C	LES	N	EQ
289	40908	TEWANTIN RSL PARK	153.0	-26.4	6.4	C	LES	N	EQ
290	40913	BRISBANE	153.0	-27.5	8.1	C	LES	N	WL
291	40922	KINGAROY AIRPORT	151.8	-26.6	433.7	I	LES	N	WL
292	40958	REDCLIFFE	153.1	-27.2	12.6	C	LES	N	EQ
293	40983	BEAUDESERT DRUMLEY STREET	153.0	-28.0	47.8	C	LES	N	WL
294	40988	NAMBOUR DAFF - HILLSIDE	152.9	-26.6	53.2	C	LES	N	EQ
295	41097	INGLEWOOD FOREST	151.0	-28.4	379	I	LES	N	WL
296	41175	APPLETHORPE	152.0	-28.6	871.6	I	MES	N	WL
297	41359	OAKLEY AERO	151.7	-27.4	405.7	I	LES	N	WL
298	41522	DALBY AIRPORT	151.3	-27.2	343.9	I	LES	N	WL
299	41525	WARWICK	152.1	-28.2	475.4	I	LES	N	WL
300	41529	TOOWOOMBA AIRPORT	151.9	-27.5	640.9	I	MES	N	WL
301	42112	MILES CONSTANCE STREET	150.2	-26.7	304.8	I	LES	N	WL
302	43091	ROMA AIRPORT	148.8	-26.5	307.4	I	LES	N	WL
303	43109	ST GEORGE AIRPORT	148.6	-28.0	198.5	I	LES	N	WL
304	44021	CHARLEVILLE AERO	146.3	-26.4	301.6	I	LES	N	WL
305	45009	BALLERA GAS FIELD	141.8	-27.4	114.5	I	LES	N	WL
306	45025	THARGOMINDAH AIRPORT	143.8	-28.0	130.9	I	LES	N	WL
307	46012	WILCANNIA AERODROME AWS	143.4	-31.5	94.3	I	LES	S	WL
308	46126	TIBOOBURRA AIRPORT	142.1	-29.4	176.4	I	LES	N	WL
309	46128	FOWLERS GAP AWS	141.7	-31.1	181	I	LES	S	WL
310	46129	WHITE CLIFFS AWS	143.1	-30.9	158	I	LES	S	WL

311	47048	BROKEN HILL AIRPORT AWS	141.5	-32.0	281.3	I	LES	S	WL
312	48027	COBAR MO	145.8	-31.5	260	I	LES	S	WL
313	48237	COBAR AIRPORT AWS	145.8	-31.5	218	I	LES	S	WL
314	48245	BOURKE AIRPORT AWS	146.0	-30.0	107.3	I	LES	S	WL
315	49000	IVANHOE AERODROME AWS	144.3	-32.9	100	I	LES	S	WL
316	50017	WEST WYALONG AIRPORT AWS	147.2	-33.9	257	I	LES	S	WL
317	50137	CONDOBOLIN AIRPORT AWS	147.2	-33.1	192.6	I	LES	S	WL
318	51049	TRANGIE RESEARCH STATION AWS	147.9	-32.0	215	I	LES	S	WL
319	51161	COONAMBLE AIRPORT AWS	148.4	-31.0	181.3	I	LES	S	WL
320	52088	WALGETT AIRPORT AWS	148.1	-30.0	133	I	LES	S	WL
321	53048	MOREE COMPARISON	149.8	-29.5	212.1	I	LES	N	WL
322	53115	MOREE AERO	149.8	-29.5	213	I	LES	N	WL
323	54038	NARRABRI AIRPORT AWS	149.8	-30.3	229	I	LES	S	WL
324	55054	TAMWORTH AIRPORT	150.8	-31.1	404	I	LES	S	WL
325	55202	GUNNEDAH AIRPORT AWS	150.2	-31.0	262.6	I	LES	S	WL
326	55325	TAMWORTH AIRPORT AWS	150.8	-31.1	394.9	I	LES	S	WL
327	56018	INVERELL RESEARCH CENTRE	151.1	-29.8	664	I	MES	N	WL
328	56238	ARMIDALE AIRPORT AWS	151.6	-30.5	1079	I	HES	S	WL
329	56243	GLEN INNES AIRPORT AWS	151.7	-29.7	1044.3	I	HES	N	WL
330	58012	YAMBA PILOT STATION	153.4	-29.4	27.4	C	LES	N	EQ
331	58077	GRAFTON RESEARCH STN	153.0	-29.6	25	C	LES	N	WL
332	58161	GRAFTON AIRPORT AWS	153.0	-29.8	25.1	C	LES	N	WL
333	58198	BALLINA AIRPORT AWS	153.6	-28.8	1.3	C	LES	N	EQ
334	58208	CASINO AIRPORT AWS	153.1	-28.9	20.9	C	LES	N	WL
335	58212	EVANS HEAD RAAF BOMBING RANGE AWS	153.4	-29.2	62.5	C	LES	N	EQ
336	58214	LISMORE AIRPORT AWS	153.3	-28.8	9.2	C	LES	N	EQ
337	58216	BYRON BAY (CAPE BYRON AWS)	153.6	-28.6	95	C	LES	N	EQ
338	59007	KEMPSEY AIRPORT AWS	152.8	-31.1	13	C	LES	S	WL
339	59040	COFFS HARBOUR MO	153.1	-30.3	5	C	LES	S	EQ
340	60139	PORT MACQUARIE AIRPORT AWS	152.9	-31.4	4.2	C	LES	S	EQ
341	60141	TAREE AIRPORT AWS	152.5	-31.9	8	C	LES	S	WL
342	61055	NEWCASTLE NOBBYS SIGNAL STATION AWS	151.8	-32.9	33	C	LES	S	EQ
343	61063	RATHMINES AMO	151.6	-33.1	9	C	LES	S	WL
344	61078	WILLIAMTOWN RAAF	151.8	-32.8	7.5	C	LES	S	WL
345	61087	GOSFORD (NARARA RESEARCH STATION) AWS	151.3	-33.4	20	C	LES	S	EQ
346	61223	MARYVILLE	151.8	-32.9	8	C	LES	S	WL
347	61250	PATERSON (TOCAL AWS)	151.6	-32.6	30	C	LES	S	WL
348	61260	CESSNOCK AIRPORT AWS	151.3	-32.8	61	C	LES	S	WL
349	61287	MERRIWA (ROSCOMMON)	150.2	-32.2	375	I	LES	S	WL
350	61363	SCONE AIRPORT AWS	150.8	-32.0	221.4	I	LES	S	WL
351	61366	NORAH HEAD AWS	151.6	-33.3	18.8	C	LES	S	EQ

352	61375	MANGROVE MOUNTAIN AWS	151.2	-33.3	305	C	LES	S	EQ
353	61392	MURRURUNDI GAP AWS	150.8	-31.7	729.4	I	MES	S	WL
354	61412	COORANBONG (LAKE MACQUARIE AWS)	151.5	-33.1	6	C	LES	S	WL
355	62100	NULLO MOUNTAIN AWS	150.2	-32.7	1130	I	HES	S	WL
356	62101	MUDGEER AIRPORT AWS	149.6	-32.6	471	I	LES	S	WL
357	63291	BATHURST AIRPORT AWS	149.7	-33.4	744.5	I	MES	S	WL
358	63292	MOUNT BOYCE AWS	150.3	-33.6	1080	I	HES	S	WL
359	63303	ORANGE AIRPORT AWS	149.1	-33.4	944.7	I	MES	S	WL
360	64017	COONABARABRAN AIRPORT AWS	149.3	-31.3	645	I	MES	S	WL
361	65068	PARKES AIRPORT AWS	148.2	-33.1	323.3	I	LES	S	WL
362	65070	DUBBO AIRPORT AWS	148.6	-32.2	284	I	LES	S	WL
363	65103	FORBES AIRPORT AWS	147.9	-33.4	230.4	I	LES	S	WL
364	65111	COWRA AIRPORT AWS	148.7	-33.8	300.4	I	LES	S	WL
365	66022	FORT DENISON	151.2	-33.9	5	C	LES	S	WL
366	66037	SYDNEY AIRPORT AMO	151.2	-33.9	6	C	LES	S	WL
367	66043	KURNELL AWS	151.2	-34.0	4	C	LES	S	WL
368	66051	LITTLE BAY (THE COAST GOLF CLUB)	151.3	-34.0	22	C	LES	S	WL
369	66059	TERREY HILLS AWS	151.2	-33.7	199	C	LES	S	WL
370	66062	SYDNEY (OBSERVATORY HILL)	151.2	-33.9	39	C	LES	S	WL
371	66078	LUCAS HEIGHTS (ANSTO)	151.0	-34.1	140	C	LES	S	WL
372	66137	BANKSTOWN AIRPORT AWS	151.0	-33.9	6.5	C	LES	S	WL
373	66194	CANTERBURY RACECOURSE AWS	151.1	-33.9	3	C	LES	S	WL
374	66195	SYDNEY OLYMPIC PARK (SYDNEY OLYMPIC PK (151.1	-33.9	28	C	LES	S	WL
375	66196	SYDNEY HARBOUR (WEDDING CAKE WEST)	151.3	-33.8	6	C	LES	S	WL
376	66197	MANLY (NORTH HEAD)	151.3	-33.8	90	C	LES	S	EQ
377	66212	SYDNEY OLYMPIC PARK AWS (ARCHERY CENTRE)	151.1	-33.8	4	C	LES	S	WL
378	67033	RICHMOND RAAF	150.8	-33.6	19	C	LES	S	WL
379	67105	RICHMOND RAAF	150.8	-33.6	19	C	LES	S	WL
380	67108	BADGERYS CREEK AWS	150.7	-33.9	81.2	C	LES	S	WL
381	67113	PENRITH LAKES AWS	150.7	-33.7	24.7	C	LES	S	WL
382	67117	HOLSWORTHY CONTROL RANGE	150.9	-34.0	40	C	LES	S	WL
383	67119	HORSLEY PARK EQUESTRIAN CENTRE AWS	150.9	-33.9	100	C	LES	S	WL
384	68072	NOWRA RAN AIR STATION AWS	150.5	-34.9	109	C	LES	S	WL
385	68076	NOWRA RAN AIR STATION	150.5	-34.9	109	C	LES	S	WL
386	68151	JERVIS BAY (POINT PERPENDICULAR AWS)	150.8	-35.1	85	C	LES	S	EQ
387	68188	WOLLONGONG UNIVERSITY	150.9	-34.4	25	C	LES	S	WL
388	68192	CAMDEN AIRPORT AWS	150.7	-34.0	73.9	C	LES	S	WL
389	68228	BELLAMBI AWS	150.9	-34.4	10	C	LES	S	WL
390	68239	MOSS VALE AWS	150.4	-34.5	678.4	C	MES	S	WL
391	68241	ALBION PARK (WOLLONGONG AIRPORT)	150.8	-34.6	8	C	LES	S	WL
392	68242	KIAMA (BOMBO HEADLAND)	150.9	-34.7	15.5	C	LES	S	EQ

393	68257	CAMPBELLTOWN (MOUNT ANNAN)	150.8	-34.1	112	C	LES	S	WL
394	69017	MONTAGUE ISLAND LIGHTHOUSE	150.2	-36.3	52	C	LES	S	EQ
395	69132	BRAIDWOOD RACECOURSE AWS	149.8	-35.4	665.2	I	MES	S	WL
396	69137	GREEN CAPE AWS	150.1	-37.3	19.4	C	LES	S	EQ
397	69138	ULLADULLA AWS	150.5	-35.4	35.7	C	LES	S	EQ
398	69139	BEGA AWS	149.8	-36.7	41	C	LES	S	WL
399	69147	MERIMBULA AIRPORT AWS	149.9	-36.9	1.5	C	LES	S	WL
400	69148	MORUYA AIRPORT AWS	150.1	-35.9	4	C	LES	S	WL
401	70014	CANBERRA AIRPORT COMPARISON	149.2	-35.3	578.4	I	MES	S	WL
402	70015	CANBERRA FORESTRY	149.1	-35.3	581	I	MES	S	WL
403	70217	COOMA AIRPORT AWS	149.0	-36.3	930	I	MES	S	WL
404	70282	CANBERRA CITY	149.1	-35.3	564	I	MES	S	WL
405	70328	BOMBALA AWS	149.2	-37.0	760.5	I	MES	S	WL
406	70330	GOULBURN AIRPORT AWS	149.7	-34.8	640	I	MES	S	WL
407	70339	TUGGERANONG (ISABELLA PLAINS) AWS	149.1	-35.4	586.7	I	MES	S	WL
408	70349	MOUNT GININI AWS	148.8	-35.5	1760	I	HES	S	WL
409	70351	CANBERRA AIRPORT	149.2	-35.3	577.1	I	MES	S	WL
410	71032	THREDBO AWS	148.3	-36.5	1957	I	HES	S	EQ
411	71075	PERISHER VALLEY AWS	148.4	-36.4	1738	I	HES	S	EL
412	72023	HUME RESERVOIR	147.0	-36.1	184	I	LES	S	WL
413	72091	CABRAMURRA SMHEA	148.4	-35.9	1475	I	HES	S	EQ
414	72150	WAGGA WAGGA AMO	147.5	-35.2	212	I	LES	S	WL
415	72160	ALBURY AIRPORT AWS	147.0	-36.1	163.5	I	LES	S	WL
416	72161	CABRAMURRA SMHEA AWS	148.4	-35.9	1482.4	I	HES	S	EQ
417	72162	KHANCOBAN AWS	148.1	-36.2	339.3	I	LES	S	WL
418	73138	YOUNG AIRPORT	148.2	-34.2	379.6	I	LES	S	WL
419	73151	TEMORA AIRPORT	147.5	-34.4	280.5	I	LES	S	WL
420	74037	YANCO AGRICULTURAL INSTITUTE	146.4	-34.6	164	I	LES	S	WL
421	74148	NARRANDERA AIRPORT AWS	146.5	-34.7	145	I	LES	S	WL
422	74258	DENILQUIN AIRPORT AWS	144.9	-35.6	94	I	LES	S	WL
423	75019	HAY AIRPORT AWS	144.8	-34.5	92	I	LES	S	WL
424	75041	GRIFFITH AIRPORT AWS	146.1	-34.2	134	I	LES	S	WL
425	76031	MILDURA AIRPORT	142.1	-34.2	50	I	LES	S	WL
426	76064	WALPEUP RESEARCH	142.0	-35.1	105	I	LES	S	WL
427	77010	HOPETOUN AIRPORT	142.4	-35.7	77.3	I	LES	S	WL
428	77094	SWAN HILL AERODROME	143.5	-35.4	71	I	LES	S	WL
429	78015	NHILL AERODROME	141.6	-36.3	138.9	I	LES	S	WL
430	79028	LONGERENONG	142.3	-36.7	133	I	LES	S	WL
431	79097	KANAGULK	141.8	-37.1	188.8	I	LES	S	WL
432	79099	EDENHOPE AIRPORT	141.3	-37.0	155	I	LES	S	WL
433	79100	HORSHAM AERODROME	142.2	-36.7	133.8	I	LES	S	WL

434	79101	PYRENEES (BEN NEVIS)	143.2	-37.2	875	I	MES	S	WL
435	79103	GRAMPIANS (MOUNT WILLIAM)	142.6	-37.3	1150	I	HES	S	EQ
436	79105	STAWELL AERODROME	142.7	-37.1	235.4	I	LES	S	WL
437	80091	KYABRAM	145.1	-36.3	105	I	LES	S	WL
438	80128	CHARLTON	143.3	-36.3	131.7	I	LES	S	WL
439	81049	TATURA INST SUSTAINABLE AG	145.3	-36.4	114	I	LES	S	WL
440	81123	BENDIGO AIRPORT	144.3	-36.7	208	I	LES	S	WL
441	81124	YARRAWONGA	146.0	-36.0	128.9	I	LES	S	WL
442	81125	SHEPPARTON AIRPORT	145.4	-36.4	113.9	I	LES	S	WL
443	82039	RUTHERGLEN RESEARCH	146.5	-36.1	175	I	LES	S	WL
444	82138	WANGARATTA AERO	146.3	-36.4	152.6	I	LES	S	WL
445	82139	HUNTERS HILL	147.5	-36.2	981	I	MES	S	WL
446	83024	MOUNT BULLER	146.4	-37.1	1707	I	HES	S	EQ
447	83084	FALLS CREEK	147.3	-36.9	1765	I	HES	S	EL
448	83085	MOUNT HOTHAM	147.1	-37.0	1849	I	HES	S	EL
449	83090	OMEQ	147.6	-37.1	689.8	I	MES	S	WL
450	84016	GABO ISLAND LIGHTHOUSE	149.9	-37.6	15.2	C	LES	S	EQ
451	84084	MALLACOOTA	149.7	-37.6	22	C	LES	S	EQ
452	84142	GELANTIPY	148.3	-37.2	755	I	MES	S	WL
453	84143	COMBIENBAR AWS	149.0	-37.3	640	I	MES	S	WL
454	84144	MOUNT NOWA NOWA	148.1	-37.7	350	C	LES	S	WL
455	84145	ORBOST	148.5	-37.7	62.7	C	LES	S	WL
456	85072	EAST SALE AIRPORT	147.1	-38.1	4.6	C	LES	S	WL
457	85096	WILSONS PROMONTORY LIGHTHOUSE	146.4	-39.1	95	C	LES	S	EQ
458	85099	POUND CREEK	145.8	-38.6	3	C	LES	S	WL
459	85151	YARRAM AIRPORT	146.7	-38.6	17.9	C	LES	S	WL
460	85279	BAIRNSDALE AIRPORT	147.6	-37.9	49.4	C	LES	S	WL
461	85280	MORWELL (LATROBE VALLEY AIRPORT)	146.5	-38.2	55.7	I	LES	S	WL
462	85291	MOUNT BAW BAW	146.3	-37.8	1561	I	HES	S	EQ
463	85296	MOUNT MOORNAPA	147.1	-37.7	480	I	LES	S	WL
464	86038	ESSENDON AIRPORT	144.9	-37.7	78.4	C	LES	S	WL
465	86068	VIEWBANK	145.1	-37.7	66.1	C	LES	S	WL
466	86071	MELBOURNE REGIONAL OFFICE	145.0	-37.8	31.2	C	LES	S	WL
467	86077	MOORABBIN AIRPORT	145.1	-38.0	12.1	C	LES	S	WL
468	86104	SCORESBY RESEARCH INSTITUTE	145.3	-37.9	80	C	LES	S	WL
469	86147	ASPENDALE CSIRO	145.1	-38.0	5	C	LES	S	WL
470	86220	ST KILDA HARBOUR - RMYS	145.0	-37.9	6.4	C	LES	S	WL
471	86266	FERNY CREEK	145.3	-37.9	512.9	C	MES	S	EQ
472	86282	MELBOURNE AIRPORT	144.8	-37.7	113.4	C	LES	S	WL
473	86361	CERBERUS	145.2	-38.4	12.7	C	LES	S	WL
474	86371	FRANKSTON AWS	145.1	-38.1	6	C	LES	S	WL

475	86372	FERNY CREEK (DUNNS HILL)	145.3	-37.9	561	C	MES	S	EQ
476	86373	RHYLL	145.3	-38.5	13.4	C	LES	S	WL
477	86383	COLDSTREAM	145.4	-37.7	83	C	LES	S	WL
478	87031	LAVERTON RAAF	144.8	-37.9	20.1	C	LES	S	WL
479	87113	AVALON AIRPORT	144.5	-38.0	10.6	C	LES	S	WL
480	87163	GROVEDALE (GEELONG AIRPORT)	144.3	-38.2	33.4	C	LES	S	WL
481	87166	POINT WILSON	144.5	-38.1	18	C	LES	S	WL
482	87168	SHEOAKS	144.1	-37.9	236.7	C	LES	S	WL
483	87184	BREAKWATER (GEELONG RACECOURSE)	144.4	-38.2	12.9	C	LES	S	WL
484	88051	REDESDALE	144.5	-37.0	290	I	LES	S	WL
485	88109	MANGALORE AIRPORT	145.2	-36.9	140.8	I	LES	S	WL
486	88162	WALLAN (KILMORE GAP)	145.0	-37.4	527.8	I	MES	S	WL
487	88164	EILDON FIRE TOWER	145.8	-37.2	637	I	MES	S	WL
488	89002	BALLARAT AERODROME	143.8	-37.5	435.2	I	LES	S	WL
489	89112	WESTMERE	142.9	-37.7	226	I	LES	S	WL
490	90015	CAPE OTWAY LIGHTHOUSE	143.5	-38.9	82	C	LES	S	EQ
491	90035	COLAC (MOUNT GELLIBRAND)	143.8	-38.2	261	C	LES	S	WL
492	90171	PORTLAND (CASHMORE AIRPORT)	141.5	-38.3	80.9	C	LES	S	WL
493	90173	HAMILTON AIRPORT	142.1	-37.6	241.1	I	LES	S	WL
494	90175	PORT FAIRY AWS	142.2	-38.4	10	C	LES	S	WL
495	90176	MORTLAKE RACECOURSE	142.8	-38.1	130	C	LES	S	WL
496	90180	AIREYS INLET	144.1	-38.5	105	C	LES	S	WL
497	90182	CASTERTON	141.3	-37.6	130.6	I	LES	S	WL
498	90184	CAPE NELSON LIGHTHOUSE	141.5	-38.4	45.4	C	LES	S	WL
499	90186	WARRNAMBOOL AIRPORT NDB	142.5	-38.3	70.8	C	LES	S	WL
500	90192	PORTLAND NTC AWS	141.6	-38.3	0	C	LES	S	WL
501	90194	DARTMOOR	141.3	-37.9	51	C	LES	S	WL
502	91104	LAUNCESTON AIRPORT COMPARISON	147.2	-41.5	166	C	LES	S	WL
503	91107	WYNYARD AIRPORT	145.7	-41.0	12	C	LES	S	EQ
504	91126	DEVONPORT AIRPORT	146.4	-41.2	8	C	LES	S	EQ
505	91219	SCOTTSDALE (WEST MINSTONE ROAD)	147.5	-41.2	197.5	C	LES	S	WL
506	91237	LAUNCESTON (TI TREE BEND)	147.1	-41.4	5	C	LES	S	WL
507	91245	CAPE GRIM BAPS (COMPARISON)	144.7	-40.7	94	C	LES	S	EQ
508	91259	LUNCHEON HILL (FORESTRY)	145.2	-41.1	344	C	LES	S	EL
509	91291	SHEFFIELD SCHOOL FARM	146.3	-41.4	294.2	C	LES	S	EQ
510	91292	SMITHTON AERODROME	145.1	-40.8	7.5	C	LES	S	EQ
511	91293	LOW HEAD	146.8	-41.1	3	C	LES	S	WL
512	91306	CRESSY RESEARCH STATION	147.1	-41.7	148	C	LES	S	WL
513	91311	LAUNCESTON AIRPORT	147.2	-41.5	166.9	C	LES	S	WL
514	91331	CAPE GRIM	144.7	-40.7	86	C	LES	S	EQ
515	92012	FINGAL (LEGGE STREET)	148.0	-41.6	237	C	LES	S	WL

516	92045	LARAPUNA (EDDYSTONE POINT)	148.3	-41.0	19.7	C	LES	S	WL
517	92114	FRIENDLY BEACHES	148.3	-42.0	55	C	LES	S	WL
518	92120	ST HELENS AERODROME	148.3	-41.3	48	C	LES	S	WL
519	92123	SWAN ISLAND	148.1	-40.7	15	C	LES	S	EQ
520	92124	MARIA ISLAND (POINT LESUEUR)	148.0	-42.7	28	C	LES	S	WL
521	94007	CAMBRIDGE AERODROME	147.5	-42.8	10	C	LES	S	WL
522	94008	HOBART AIRPORT	147.5	-42.8	4	C	LES	S	WL
523	94029	HOBART (ELLERSLIE ROAD)	147.3	-42.9	50.5	C	LES	S	WL
524	94041	MAATSUYKER ISLAND LIGHTHOUSE	146.3	-43.7	146.5	C	LES	S	EL
525	94087	KUNANYI (MOUNT WELLINGTON PINNACLE)	147.2	-42.9	1260.5	C	HES	S	EQ
526	94155	TASMAN ISLAND	148.0	-43.2	240	C	LES	S	EQ
527	94191	HARTZ MOUNTAIN (KEOGHS PIMPLE)	146.8	-43.2	831	C	MES	S	EL
528	94195	TUNNACK FIRE STATION	147.5	-42.5	461.5	C	LES	S	WL
529	94198	CAPE BRUNY (CAPE BRUNY)	147.1	-43.5	59.7	C	LES	S	EQ
530	94212	CAMPANIA (KINCORA)	147.4	-42.7	45	C	LES	S	WL
531	94220	GROVE (RESEARCH STATION)	147.1	-43.0	65	C	LES	S	WL
532	95003	BUSHY PARK (BUSHY PARK ESTATES)	146.9	-42.7	27	C	LES	S	WL
533	95048	OUSE FIRE STATION	146.7	-42.5	90	I	LES	S	WL
534	96003	BUTLERS GORGE	146.3	-42.3	667	I	MES	S	EQ
535	96033	LIAWENEE	146.7	-41.9	1057	I	HES	S	EQ
536	97000	CAPE SORELL	145.2	-42.2	19.3	C	LES	S	EL
537	97024	WARRA	146.7	-43.1	495	C	LES	S	EQ
538	97072	STRAHAN AERODROME	145.3	-42.2	21	C	LES	S	EL
539	97083	SCOTTS PEAK DAM	146.3	-43.0	408	C	LES	S	EL
540	97085	MOUNT READ	145.5	-41.8	1119.5	C	HES	S	EL
541	98017	KING ISLAND AIRPORT	143.9	-39.9	37	C	LES	S	EQ
542	99005	FLINDERS ISLAND AIRPORT	148.0	-40.1	9	C	LES	S	WL
543	200001	MIDDLE PERCY ISLAND	150.3	-21.7	208.7	C	LES	N	WL
544	200283	WILLIS ISLAND	150.0	-16.3	9.3	C	LES	N	EQ
545	200731	POINT FAWCETT	130.0	-11.8	6.5	C	LES	N	WL
546	200786	CAPE WESSEL	136.8	-11.0	18	C	LES	N	WL
547	200838	HOGAN ISLAND	147.0	-39.2	116	C	LES	S	WL
548	200879	ARLINGTON REEF	146.1	-16.7	0	C	LES	N	EL

Table S2. Annual and seasonal trends in the mean magnitude of DPWG ($\text{m s}^{-1} \text{dec}^{-1}$) for all 548 stations and the regional series for 1975-2006. Statistically significant trends at $p < 0.10$ are in bold and $p < 0.05$ are bold and in parentheses.

	All	C	I	LES	MES	HES	S	N	EL	EQ	WL
Annual	-0.023	-0.022	-0.025	-0.023	-0.022	-0.043	-0.039	-0.006	-0.038	-0.020	-0.023
W. (JJA)	+0.054	+0.072	+0.027	+0.053	+0.037	+0.131	+0.062	+0.045	+0.275	+0.045	+0.051
Sp. (SON)	-0.028	-0.034	-0.019	-0.029	-0.014	+0.012	-0.036	-0.019	-0.091	+0.002	-0.030
S. (DJF)	(-0.121)	(-0.132)	(-0.103)	(-0.118)	-0.117	-0.244	(-0.152)	(-0.086)	(-0.315)	-0.136	(-0.115)
A. (MAM)	-0.003	+0.003	-0.013	-0.002	-0.002	-0.072	-0.038	+0.034	-0.029	+0.001	-0.003

Table S3. As for Table S2, but monthly.

	All	C	I	LES	MES	HES	S	N	EL	EQ	WL
Jan.	(-0.149)	(-0.161)	(-0.132)	(-0.144)	-0.151	(-0.360)	(-0.198)	-0.097	(-0.467)	(-0.189)	(-0.138)
Feb.	(-0.116)	(-0.142)	-0.078	(-0.119)	-0.061	-0.139	(-0.123)	(-0.109)	(-0.222)	(-0.131)	(-0.112)
Mar.	-0.026	-0.012	-0.045	-0.021	-0.035	-0.177	-0.065	+0.017	-0.077	-0.009	-0.027
Apr.	+0.076	+0.069	+0.086	+0.077	+0.078	+0.042	+0.045	(+0.110)	-0.026	+0.069	+0.079
May	-0.060	-0.048	-0.079	-0.060	-0.050	-0.082	-0.093	-0.025	+0.017	-0.058	-0.062
Jun.	+0.180	+0.200	+0.151	+0.179	+0.159	+0.280	+0.238	+0.118	(+0.509)	+0.166	+0.176
Jul.	-0.029	-0.017	-0.046	-0.030	-0.043	+0.078	-0.043	-0.013	+0.146	-0.029	-0.032
Aug.	+0.011	+0.034	-0.025	+0.011	-0.006	+0.034	-0.008	+0.031	+0.169	-0.001	+0.009
Sep.	+0.011	+0.010	+0.013	+0.006	+0.044	+0.167	+0.030	-0.009	+0.096	+0.012	+0.010
Oct.	-0.022	-0.029	-0.013	-0.024	-0.009	-0.004	-0.030	-0.014	-0.082	+0.025	-0.028
Nov.	-0.071	-0.082	-0.056	-0.070	-0.077	-0.128	-0.107	-0.034	-0.286	-0.030	-0.073
Dec.	-0.081	-0.081	-0.081	-0.075	-0.119	-0.234	-0.115	-0.044	-0.227	-0.062	-0.081

Table S4. Relative frequency (%) of stations showing significant (at $p < 0.05$ and $p < 0.10$) and non-significant (at $p < 0.10$) negative and positive trends in (a) the magnitude of daily peak wind gusts and (b) the 90th percentile of daily peak wind gusts at monthly basis for 1941-2016. For the three p -level thresholds, relative frequencies are calculated with respect to the total number of stations showing negative or positive tendencies. Spatial distribution is shown in the Figure 7 (for the magnitude of daily peak wind gusts) and Figure 12 (for the 90th percentile of daily peak wind gusts).

Periods	Negative	Negative $p < 0.05$	Negative $p < 0.10$	Negative $p > 0.10$	Positive	Positive $p < 0.05$	Positive $p < 0.10$	Positive $p > 0.10$
(a) Magnitude								
January	87.0	64.4	72.5	27.5	13.0	4.2	8.5	91.5
February	87.4	53.7	61.8	38.2	12.6	2.9	10.1	89.9
March	84.5	38.2	50.5	49.5	15.5	0.0	1.2	98.8
April	85.2	28.5	41.5	58.5	14.8	3.7	7.4	92.6
May	66.1	14.1	24.0	76.0	33.9	15.1	21.0	79.0
June	54.6	14.4	21.1	78.9	45.4	24.9	37.8	62.2
July	66.8	21.0	26.0	74.0	33.2	26.4	33.5	66.5
August	63.0	14.5	20.9	79.1	37.0	9.9	14.3	85.7
September	81.2	28.8	36.9	63.1	18.8	1.0	1.9	98.1
October	91.1	48.3	60.3	39.7	8.9	10.2	12.2	87.8
November	94.5	72.8	79.0	21.0	5.5	6.7	13.3	86.7
December	92.5	69.4	75.7	24.3	7.5	4.9	7.3	92.7
(b) Frequency								
January	80.1	48.7	56.9	43.1	19.9	17.4	25.7	74.3
February	81.2	47.0	57.8	42.2	18.8	9.7	18.4	81.6
March	84.9	38.3	51.4	48.6	15.1	12.0	15.7	84.3
April	86.9	52.9	64.9	35.1	13.1	6.9	12.5	87.5
May	77.2	40.7	51.3	48.7	22.8	15.2	21.6	78.4
June	72.8	38.3	50.9	49.1	27.2	22.8	28.9	71.1
July	77.9	37.7	48.9	51.1	22.1	29.8	36.4	63.6
August	75.4	33.4	42.6	57.4	24.6	16.3	21.5	78.5
September	76.6	18.8	28.8	71.2	23.4	6.3	13.3	86.7
October	85.2	34.3	46.9	53.1	14.8	13.6	17.3	82.7
November	90.0	61.5	68.0	32.0	10.0	25.5	34.5	65.5
December	87.4	52.0	59.9	40.1	12.6	7.2	13.0	87.0

Table S5. Relative percentage (%) of stations with significant (at $p < 0.05$ and $p < 0.10$) and non-significant (at $p < 0.10$) negative and positive trends in (a) the magnitude of DPWG and (b) the 90th percentile of DPWG annually and seasonally for 1975-2006 for 548 stations across Australia. For the three p -level thresholds, relative frequencies are calculated with respect to the total number of stations showing negative or positive tendencies. Spatial distribution is shown in the Figure S4 (for the magnitude of daily peak wind gusts) and Figure S7 (for the 90th percentile of daily peak wind gusts).

	Negative	Negative $p < 0.05$	Negative $p < 0.10$	Negative $p > 0.10$	Positive	Positive $p < 0.05$	Positive $p < 0.10$	Positive $p > 0.10$
(a) Magnitude								
Annual	60.9	12.9	21.3	78.7	39.1	16.8	18.7	81.3
Winter (DJF)	35.2	4.7	8.3	91.7	64.8	18.6	28.2	71.8
Spring (MAM)	55.5	8.9	13.8	86.2	44.5	7.8	9.8	90.2
Summer (JJA)	82.3	24.4	33.5	66.5	17.7	2.1	8.2	91.8
Autumn (SON)	52.6	26.4	35.1	64.9	47.4	17.3	24.6	75.4
(b) Frequency								
Annual	86.3	81.8	84.8	15.2	13.7	42.7	56.0	44.0
Winter (DJF)	71.9	61.2	69.5	30.5	28.1	32.5	44.8	55.2
Spring (MAM)	75.0	72.0	78.3	21.7	25.0	33.6	43.1	56.9
Summer (JJA)	91.8	64.0	69.4	30.6	8.2	51.1	53.3	46.7
Autumn (SON)	80.8	69.5	75.8	24.2	19.2	36.2	46.7	53.3

Table S6. Relative frequency (%) of stations showing significant (at $p < 0.05$ and $p < 0.10$) and non-significant (at $p < 0.10$) negative and positive trends in (a) the magnitude of daily peak wind gusts and (b) the 90th percentile of daily peak wind gusts at monthly basis for 1975-2006. For the three p -level thresholds, relative frequencies are calculated with respect to the total number of stations showing negative or positive tendencies. Spatial distribution is shown in the Figure S5 (for the magnitude of daily peak wind gusts) and Figure S8 (for the 90th percentile of daily peak wind gusts).

Periods	Negative	Negative $p < 0.05$	Negative $p < 0.10$	Negative $p > 0.10$	Positive	Positive $p < 0.05$	Positive $p < 0.10$	Positive $p > 0.10$
(a) Magnitude								
January	78.6	22.7	30.9	69.1	21.4	3.4	4.3	95.7
February	73.2	13.0	23.2	76.8	26.8	0.7	2.0	98.0
March	58.6	13.1	23.1	76.9	41.4	12.8	21.1	78.9
April	30.5	3.6	5.4	94.6	69.5	6.0	10.5	89.5
May	55.5	14.8	25.0	75.0	44.5	11.1	18.9	81.1
June	21.2	1.7	6.9	93.1	78.8	18.5	26.6	73.4
July	54.7	6.0	12.3	87.7	45.3	2.4	6.9	93.1
August	44.9	1.6	2.8	97.2	55.1	14.9	20.5	79.5
September	49.6	2.9	6.3	93.8	50.4	4.0	7.2	92.8
October	52.7	6.9	12.5	87.5	47.3	9.3	12.0	88.0
November	64.2	10.5	18.8	81.3	35.8	10.2	16.3	83.7
December	69.2	10.3	20.1	79.9	30.8	7.7	14.8	85.2
(b) Frequency								
January	88.9	43.3	50.9	49.1	11.1	36.1	49.2	50.8
February	83.4	44.2	55.1	44.9	16.6	18.7	26.4	73.6
March	78.6	36.2	48.5	51.5	21.4	27.4	36.8	63.2
April	65.1	57.7	67.8	32.2	34.9	26.7	39.8	60.2
May	77.2	39.7	48.9	51.1	22.8	18.4	29.6	70.4
June	55.7	45.6	56.7	43.3	44.3	19.8	30.0	70.0
July	86.3	36.2	46.9	53.1	13.7	34.7	41.3	58.7
August	53.5	31.4	41.0	59.0	46.5	26.7	33.3	66.7
September	52.7	19.7	30.8	69.2	47.3	11.6	18.9	81.1
October	69.0	39.4	51.6	48.4	31.0	12.9	22.4	77.6
November	81.0	64.9	72.3	27.7	19.0	27.9	31.7	68.3
December	76.8	51.3	58.9	41.1	23.2	29.9	37.8	62.2

Table S7. Annual and seasonal trends in the mean frequency of DPWG exceeding the 90th percentile (days dec⁻¹) for all 548 stations and the regional series for 1975-2006. Statistically significant trends at $p < 0.10$ are in bold and $p < 0.05$ are bold and in parentheses.

	All	C	I	LES	MES	HES	S	N	EL	EQ	WL
Annual	(-4.980)	(-5.002)	(-4.797)	(-5.517)	(-4.018)	(-2.762)	(-5.269)	(-4.131)	(-0.882)	(-3.794)	(-5.368)
W (JJA)	(-0.946)	(-0.750)	(-1.065)	(-1.072)	(-0.827)	-0.268	(-0.555)	(-0.821)	+1.607	(-0.957)	(-0.834)
Sp (SON)	(-0.680)	(-0.942)	(-0.722)	(-0.933)	(-0.555)	(-0.312)	(-0.984)	(-0.671)	(-0.315)	(-0.601)	(-0.909)
S (DJF)	(-2.058)	(-2.137)	(-1.739)	(-2.221)	(-1.457)	(-1.442)	(-1.969)	(-1.648)	(-1.952)	(-1.305)	(-2.181)
A (MAM)	(-1.298)	(-1.098)	(-1.250)	(-1.296)	(-1.083)	(-0.759)	(-1.613)	(-0.935)	-0.138	(-0.876)	(-1.453)

Table S8. As in Table S7, but monthly.

	All	C	I	LES	MES	HES	S	N	EL	EQ	WL
Jan.	(-0.755)	(-0.649)	(-0.860)	(-0.698)	(-0.750)	(-0.720)	(-0.845)	(-0.790)	(-0.867)	(-0.394)	(-0.794)
Feb.	(-0.671)	(-0.933)	(-0.596)	(-0.959)	(-0.390)	(-0.163)	(-0.528)	(-0.629)	(-0.456)	(-0.489)	(-0.836)
Mar.	(-0.671)	(-0.680)	(-0.766)	(-0.700)	(-0.612)	(-0.700)	(-0.770)	(-0.673)	-0.269	(-0.667)	(-0.810)
Apr.	(-0.127)	(+0.007)	(+0.015)	(-0.070)	(-0.134)	(+0.242)	(-0.253)	(+0.075)	-0.037	(-0.090)	(-0.088)
May	(-0.500)	(-0.425)	(-0.499)	(-0.526)	-0.337	-0.301	(-0.590)	(-0.337)	+0.169	-0.119	(-0.555)
Jun.	+0.116	+0.059	+0.007	(-0.002)	-0.068	+0.024	+0.286	(-0.119)	+1.061	-0.110	+0.095
Jul.	-0.691	(-0.724)	-0.759	(-0.733)	-0.752	-0.348	(-0.883)	(-0.557)	+0.004	-0.799	(-0.651)
Aug.	(-0.370)	(-0.084)	(-0.313)	(-0.337)	-0.007	+0.057	+0.042	(-0.145)	+0.543	-0.048	(-0.279)
Sep.	(+0.357)	(+0.154)	+0.339	(+0.169)	+0.224	+0.368	+0.189	(+0.229)	+0.330	(+0.015)	(+0.302)
Oct.	(-0.354)	(-0.383)	(-0.425)	(-0.324)	(-0.119)	(-0.095)	(-0.390)	(-0.328)	-0.163	(-0.066)	(-0.383)
Nov.	(-0.684)	(-0.713)	(-0.636)	(-0.777)	(-0.660)	(-0.585)	(-0.783)	(-0.572)	(-0.482)	(-0.550)	(-0.828)
Dec.	(-0.631)	(-0.631)	(-0.304)	(-0.559)	(-0.412)	(-0.541)	(-0.744)	(-0.286)	(-0.713)	(-0.477)	(-0.543)

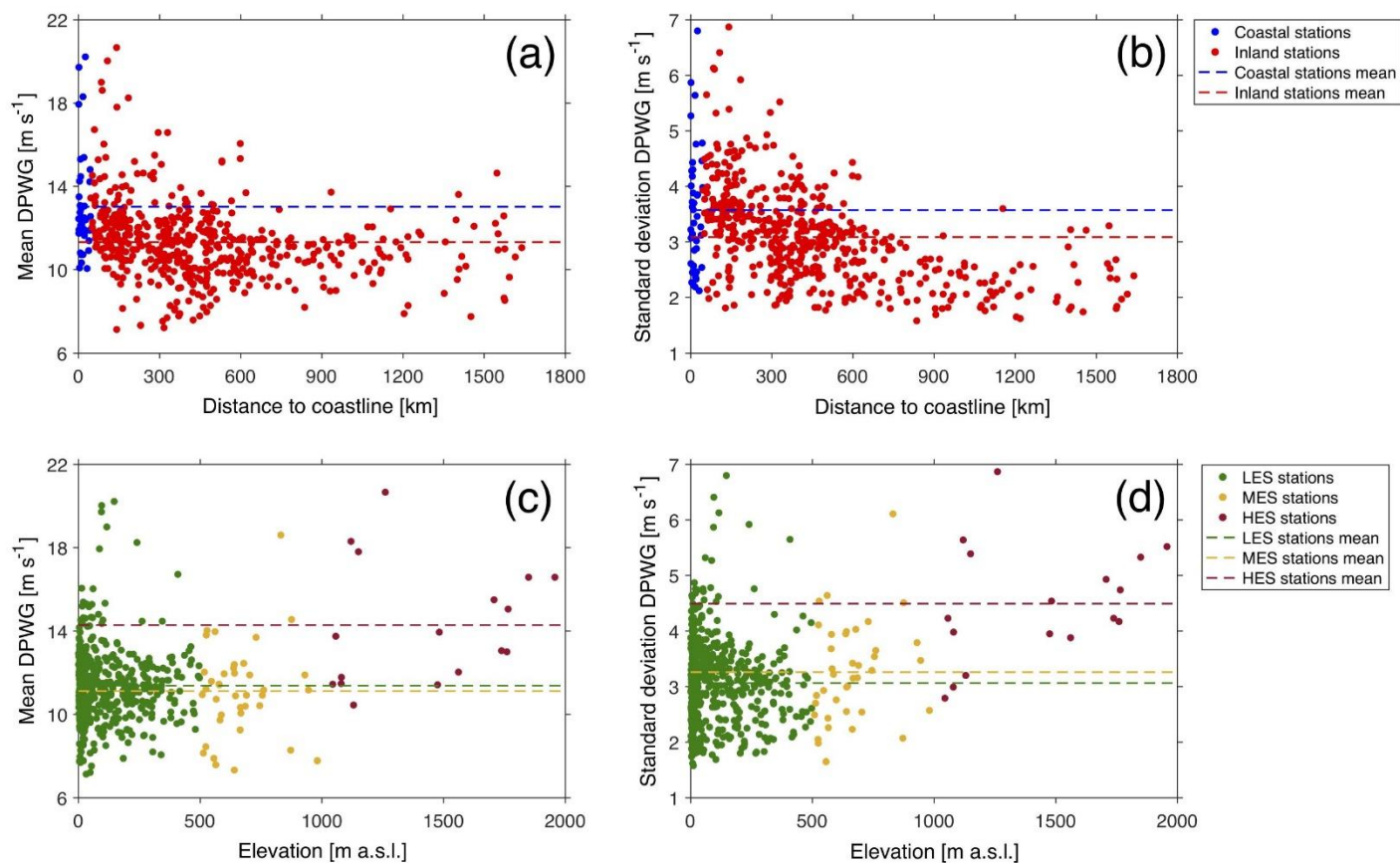


Figure S1. Scatterplot of the mean (left) and standard deviation (right) of DPWG for the 548 stations across Australia for 1941-2016 plotted against station distance to the coastline (top row) and elevation (bottom row). Scatter-points are colored according to the station classification: (i) coastal stations in blue; (ii) inland stations in red; (iii) LES stations in green; (iv) MES stations in yellow; and (v) HES stations in brown. Dashed lines show the regional means.

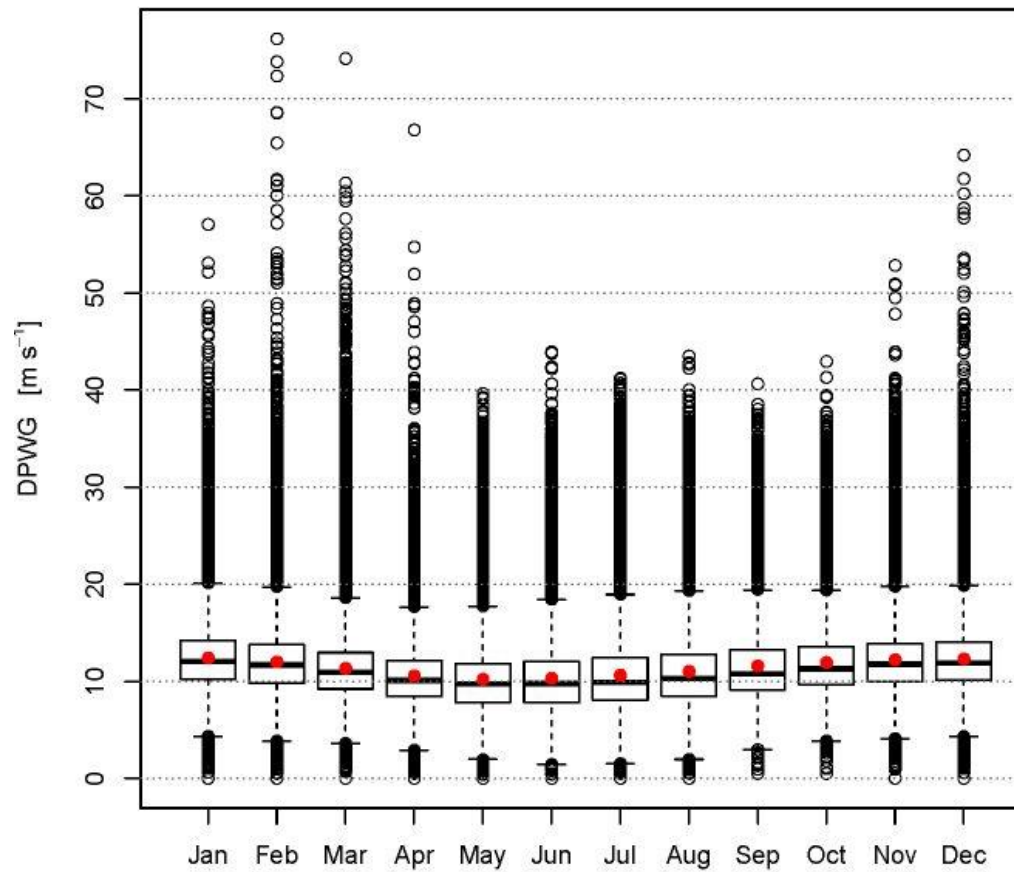


Figure S2. Monthly box-and-whisker plots of DPWG for all 548 homogenized series for 1941-2016. The mean (red dot), the median (thick black line), the 25th and 75th percentile range (boxes), the 10th and 90th percentiles (whiskers), and the outliers (dots) are represented, respectively.

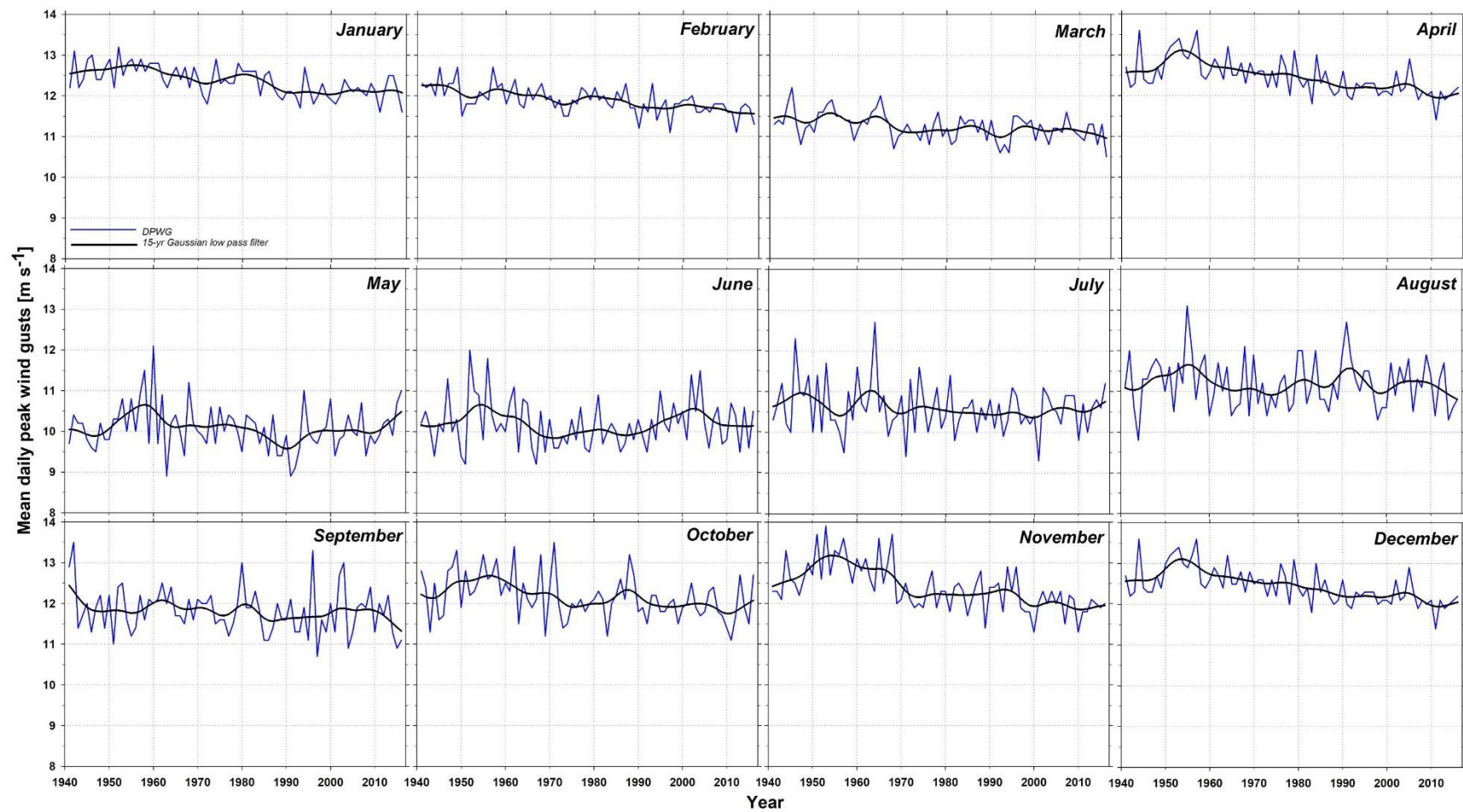
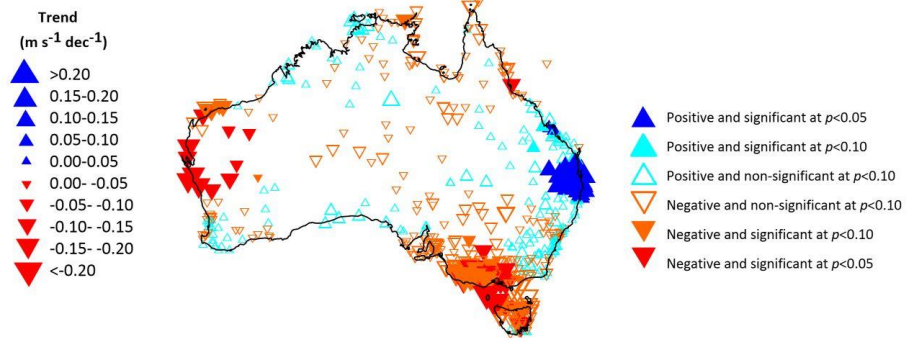


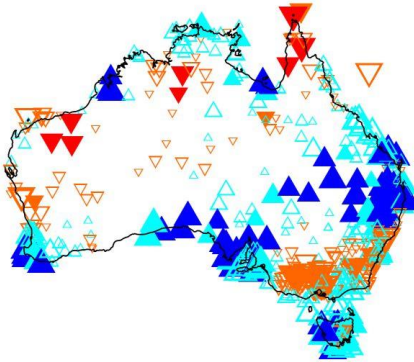
Figure S3. Monthly mean wind speed of DPWG in Australia for 1941-2016. The 15 years Gaussian low-pass filter is also shown with a black solid line.

Trends in the mean of DPWG, 1975-2006

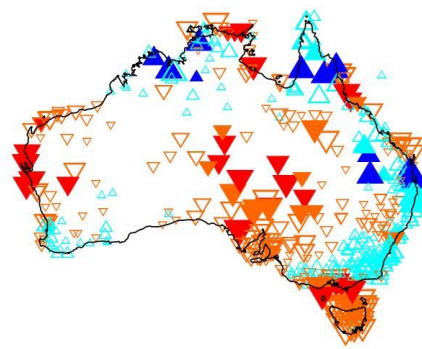
(a) Annual



(b) Winter (JJA)



(c) Spring (SON)



(d) Summer (DJF)



(e) Autumn (MAM)

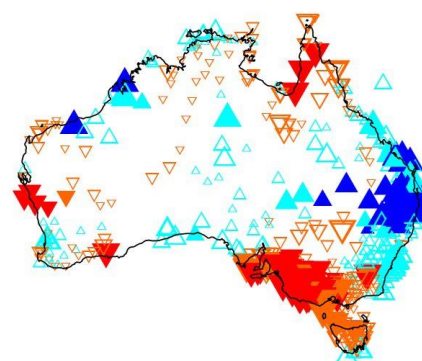


Figure S4. Annual and seasonal spatial distribution of the sign, magnitude ($\text{m s}^{-1} \text{dec}^{-1}$) and significance of trends in mean DPWG for 548 stations across Australia for 1975-2006.

Trends in the mean of DPWG, 1975-2006

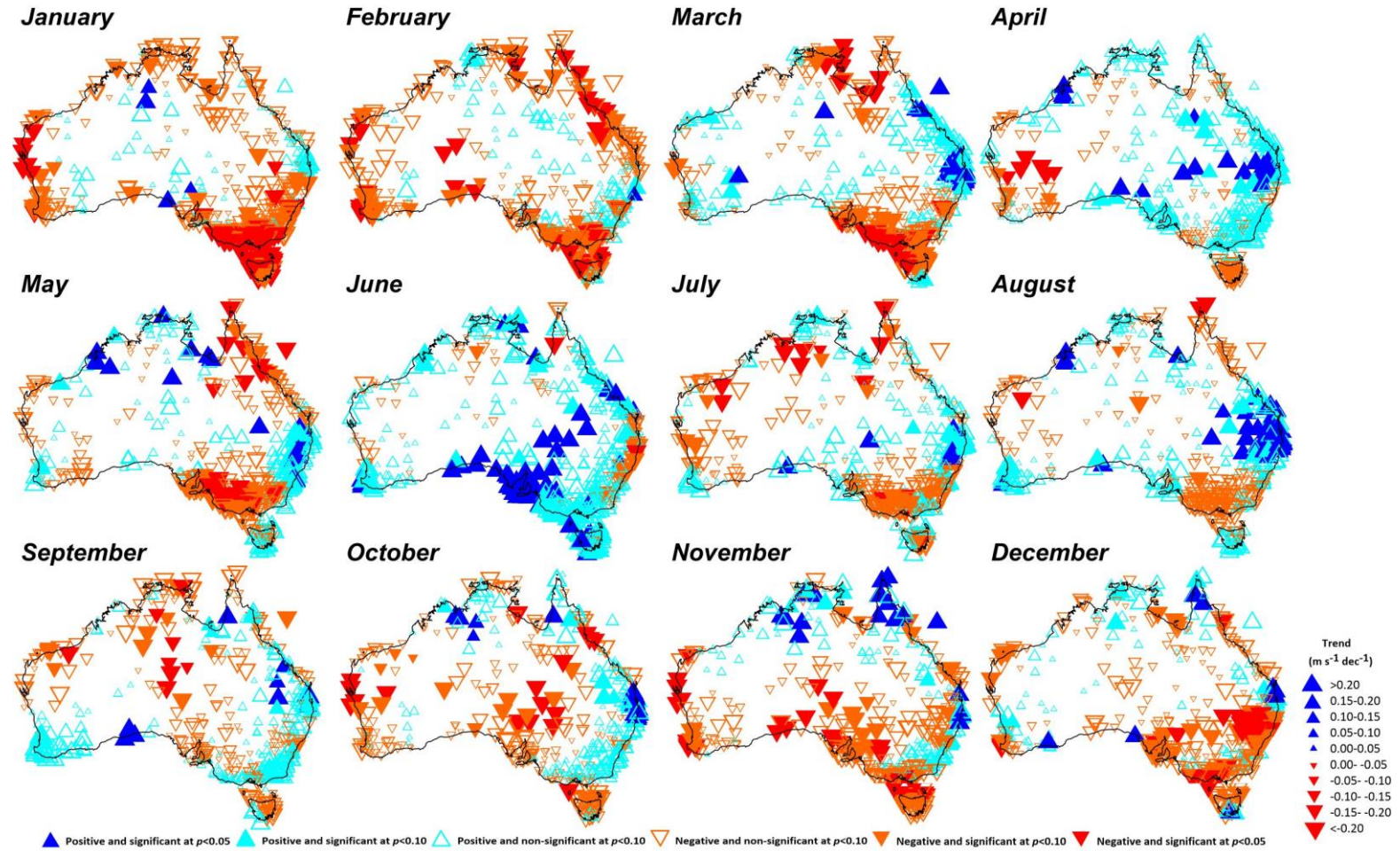


Figure S5. As Figure S4, but monthly.

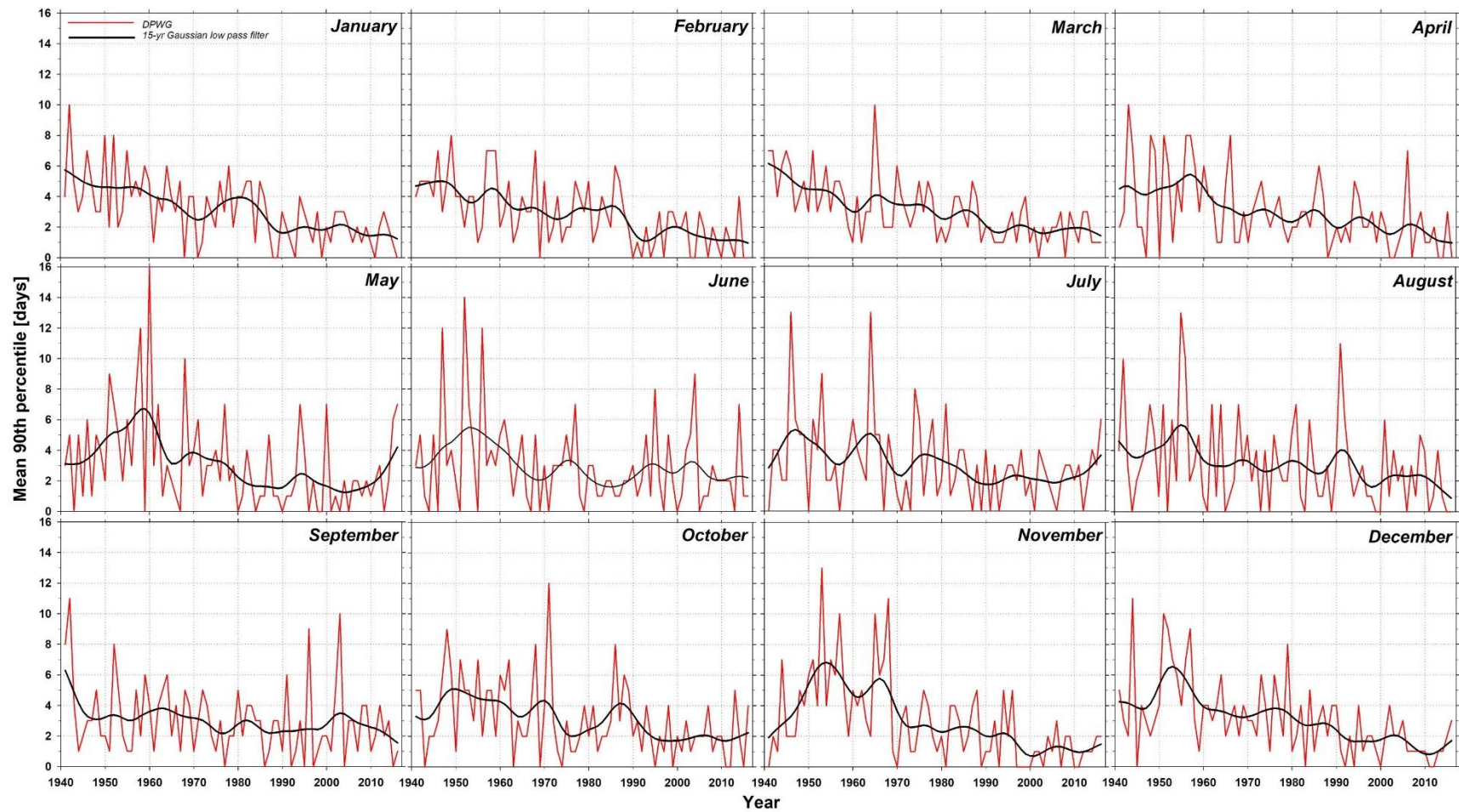


Figure S6. Monthly mean in the number of days exceeding the 90th percentile in Australia for 1941-2016. The 15 years Gaussian low-pass filter is also shown with a black solid line.

Trends in the 90th percentile of DPWG, 1975-2006

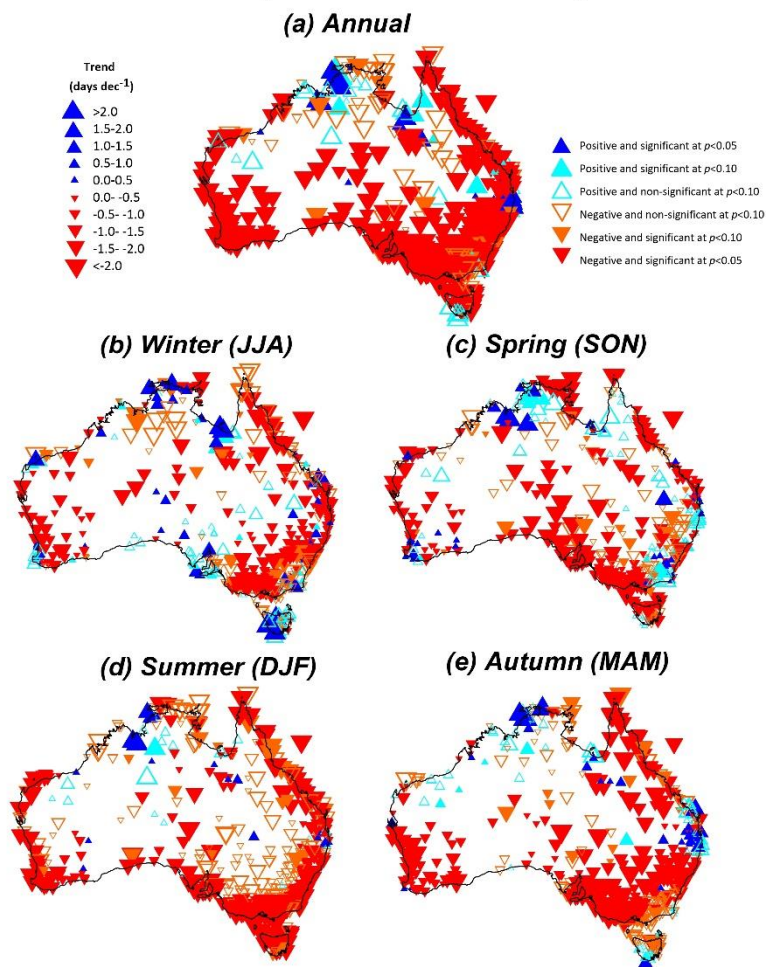


Figure S7. Spatial distribution of the sign, magnitude (days dec⁻¹) and significance of annual and seasonal trends of the number of days exceeding the 90th percentile DPWG for 548 stations across Australia for 1975-2006.

Trends in the 90th percentile of DPWG, 1975-2006

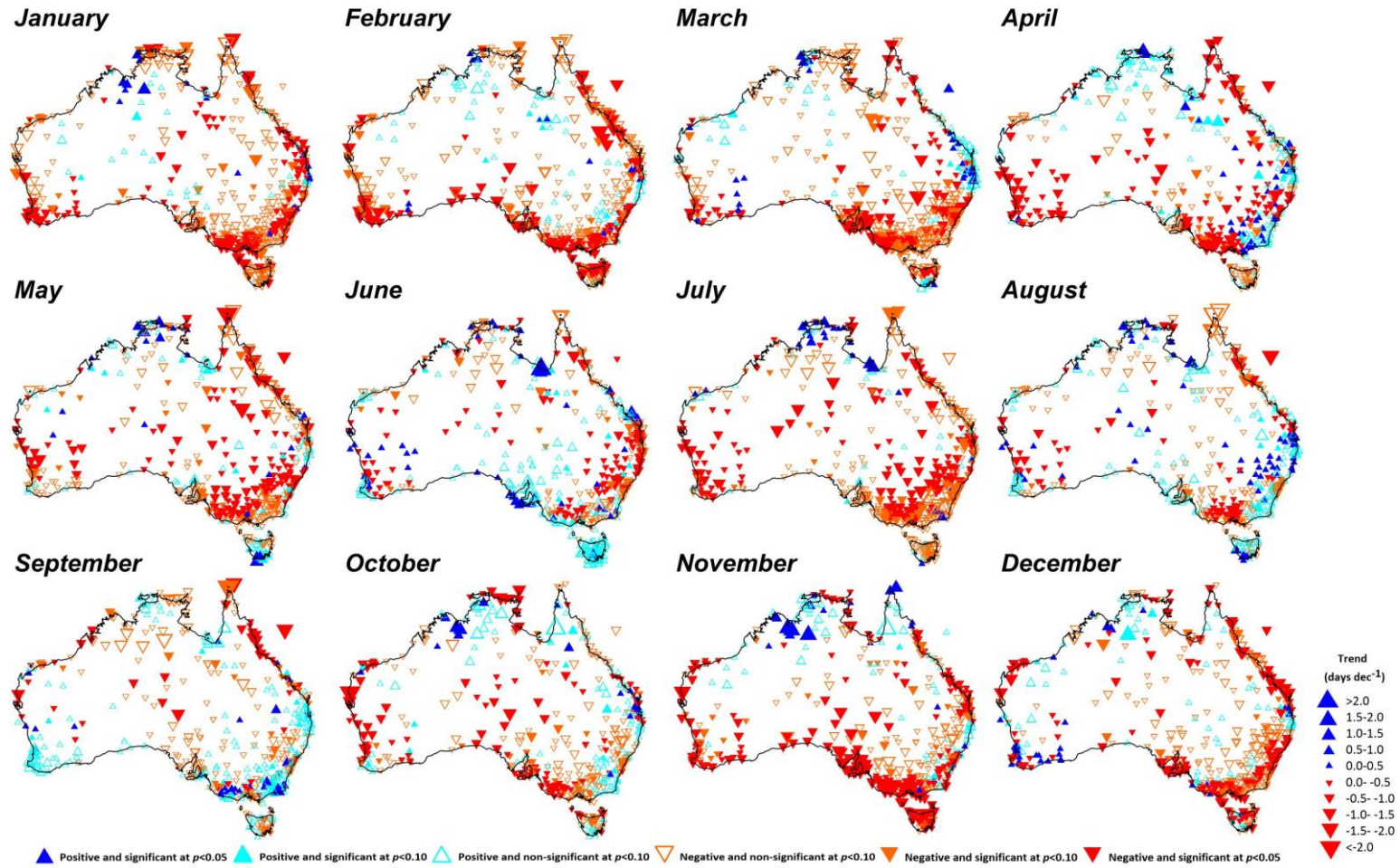


Figure S8. As Figure S7, but monthly.

Trends in the mean of DPWG, 1941–2016

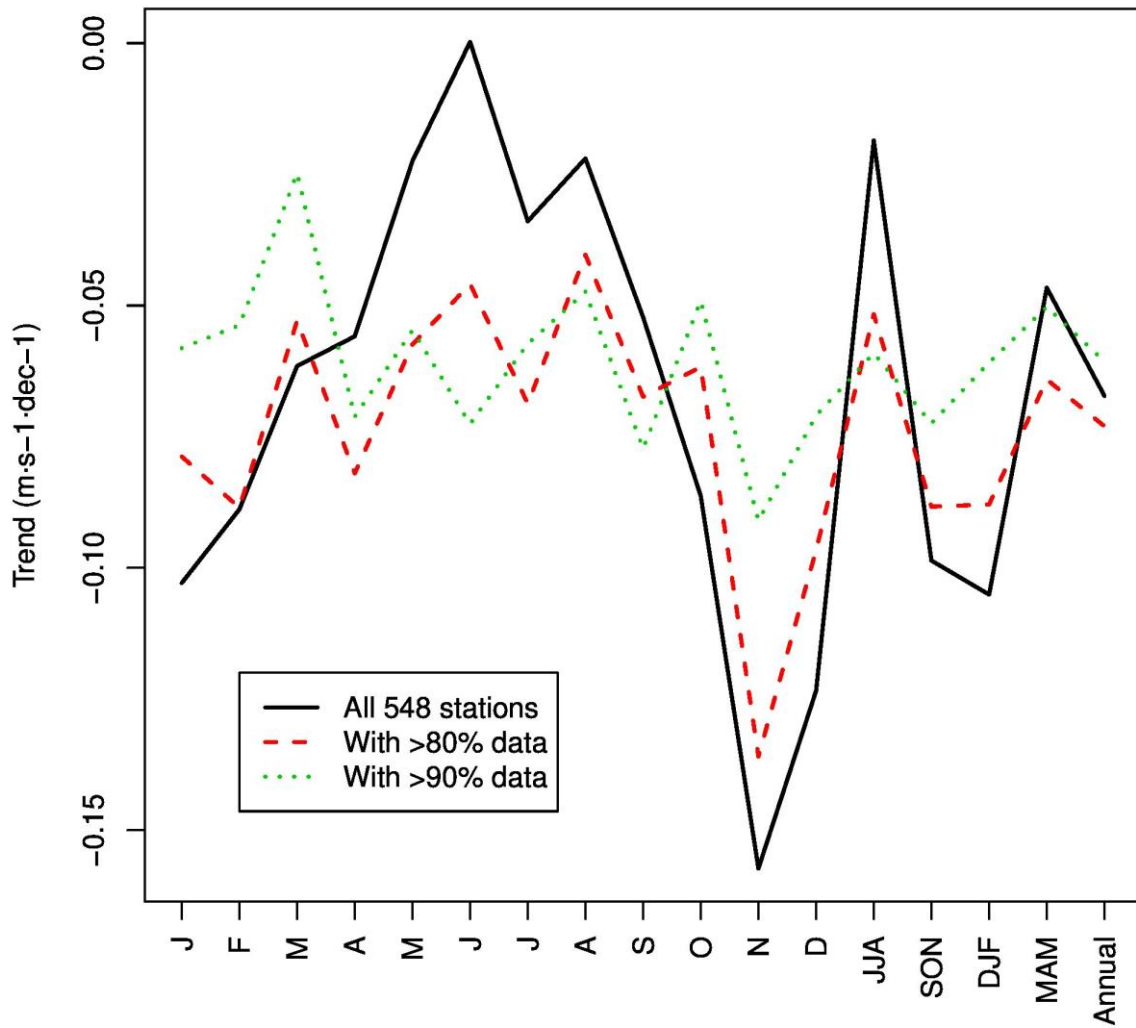


Figure S9. Monthly, seasonal and annual trends in the mean of DPWG for all 548 stations, and stations with >80% and >90% of data for 1941-2016.

Trends in the 90th percentile of DPWG, 1941–2016

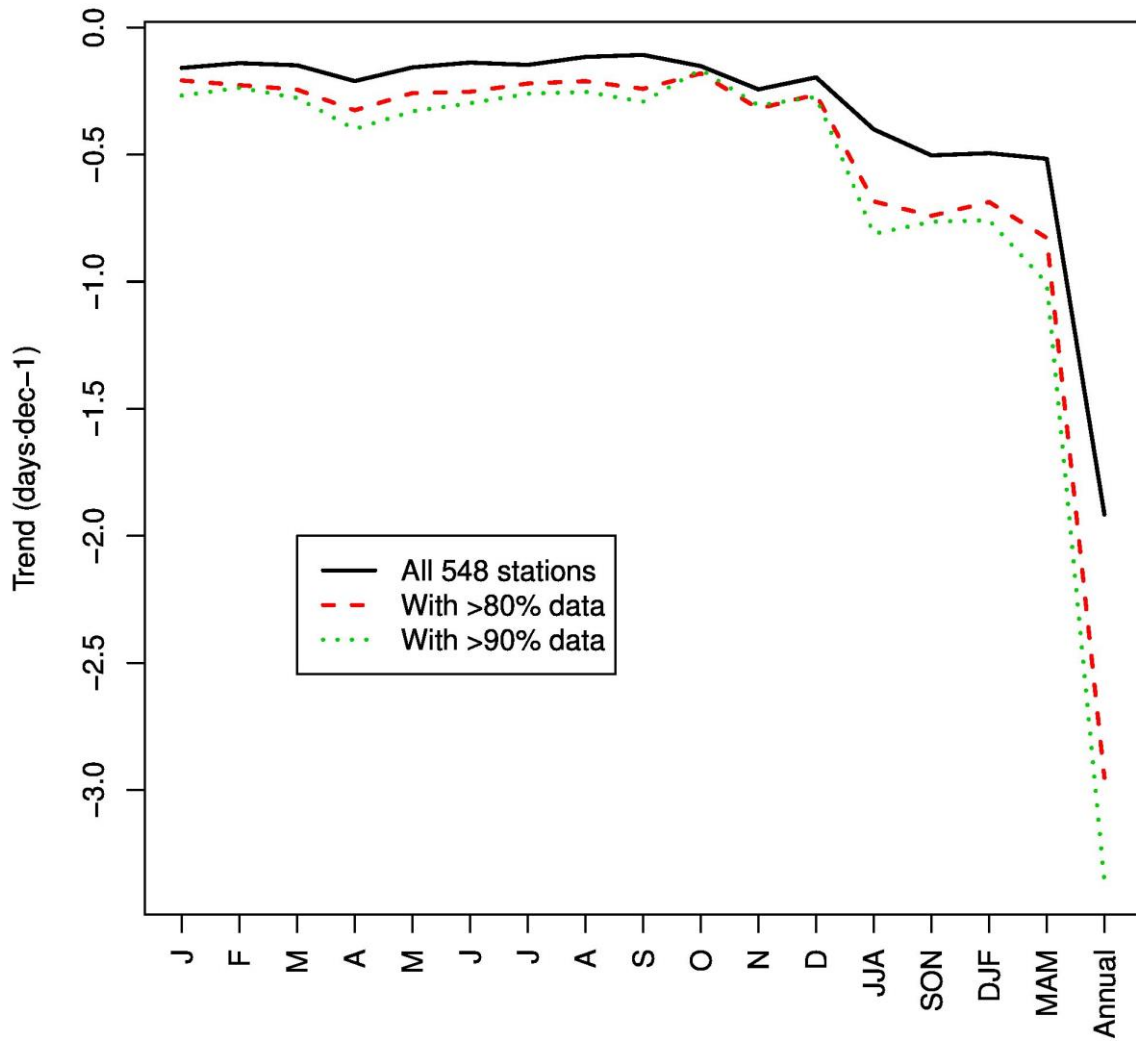


Figure S10. Monthly, seasonal and annual trends in the 90th percentile of DPWG for all 548 stations, and stations with >80% and >90% of data for 1941-2016.

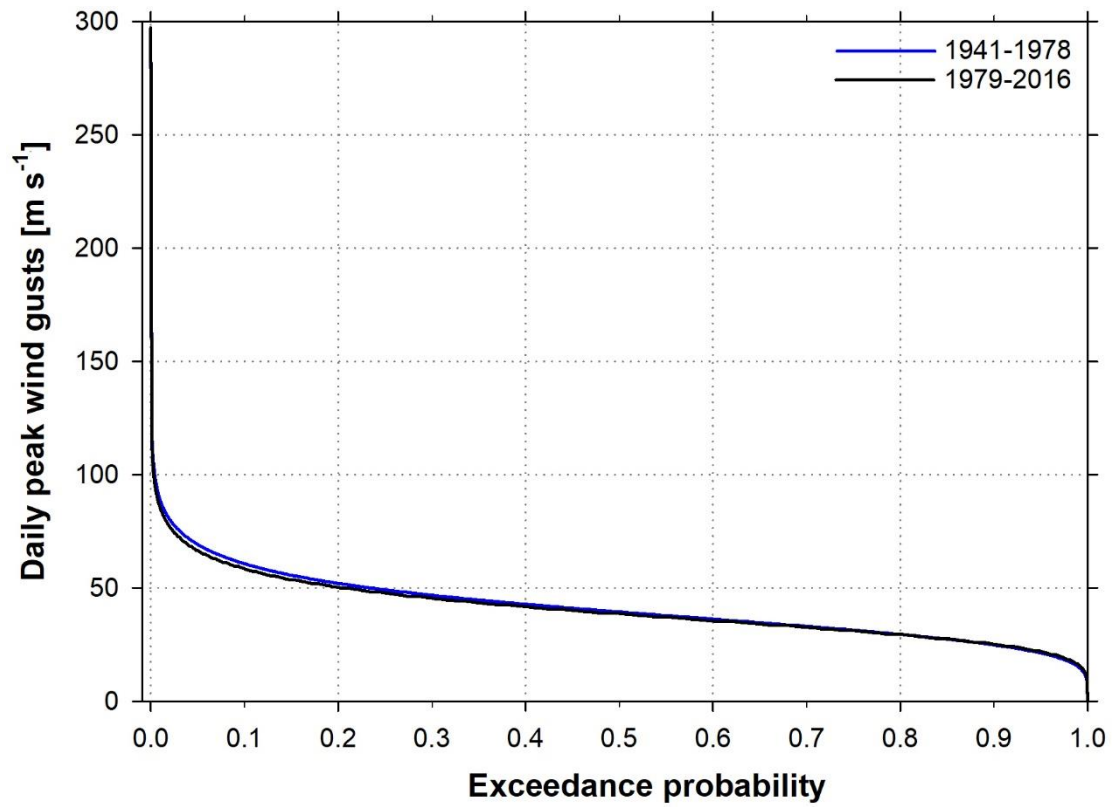


Figure S11. Probability of exceedance of DPWG between 1941-1978 and 1979-2016.

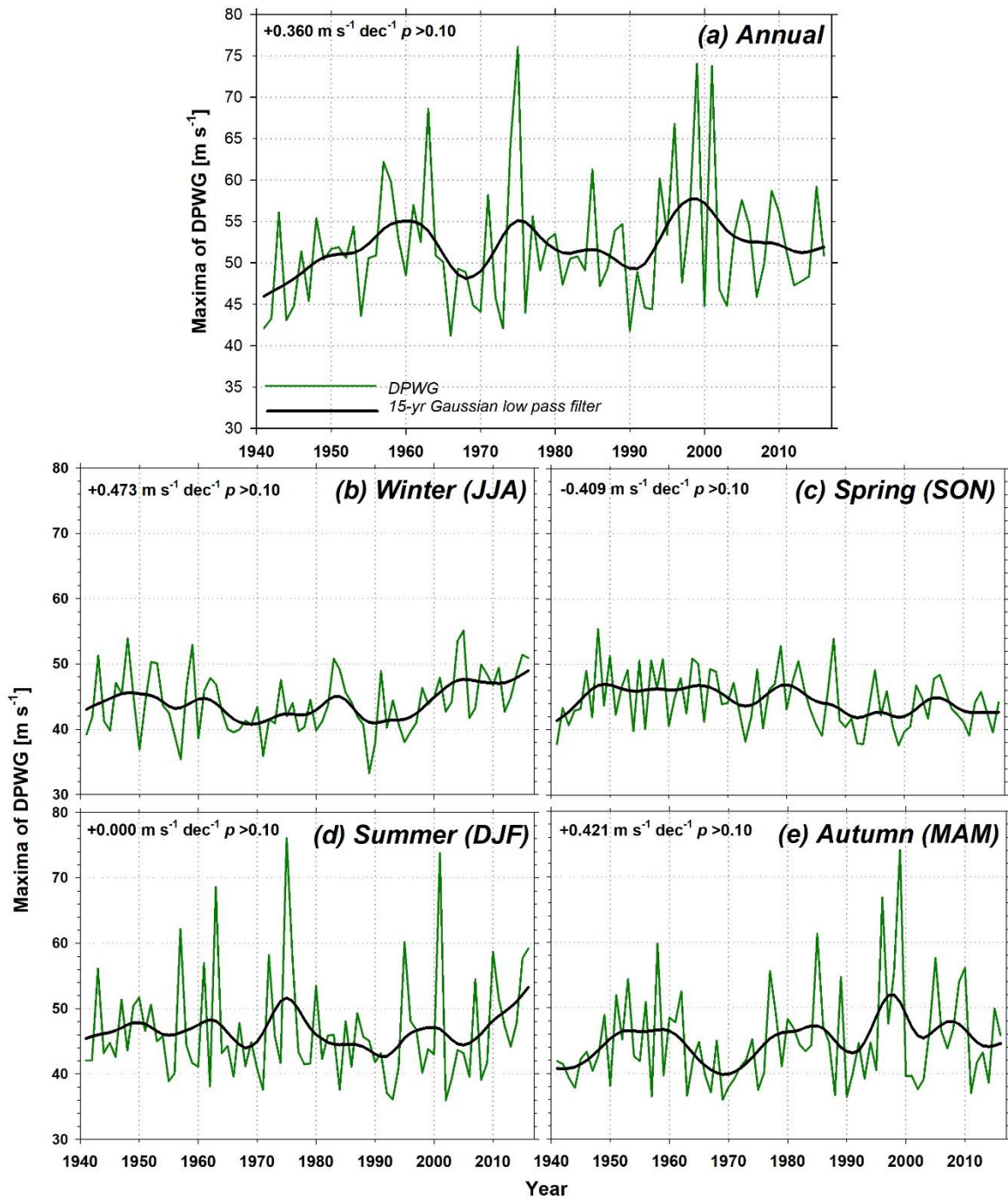


Figure S12. Annual and seasonal maxima of daily peak wind gusts in Australia for 1941-2016. The 15 years Gaussian low-pass filter is also shown with a black solid line. Trends (in $\text{m s}^{-1} \text{dec}^{-1}$) and statistical significance is inserted for each plot.

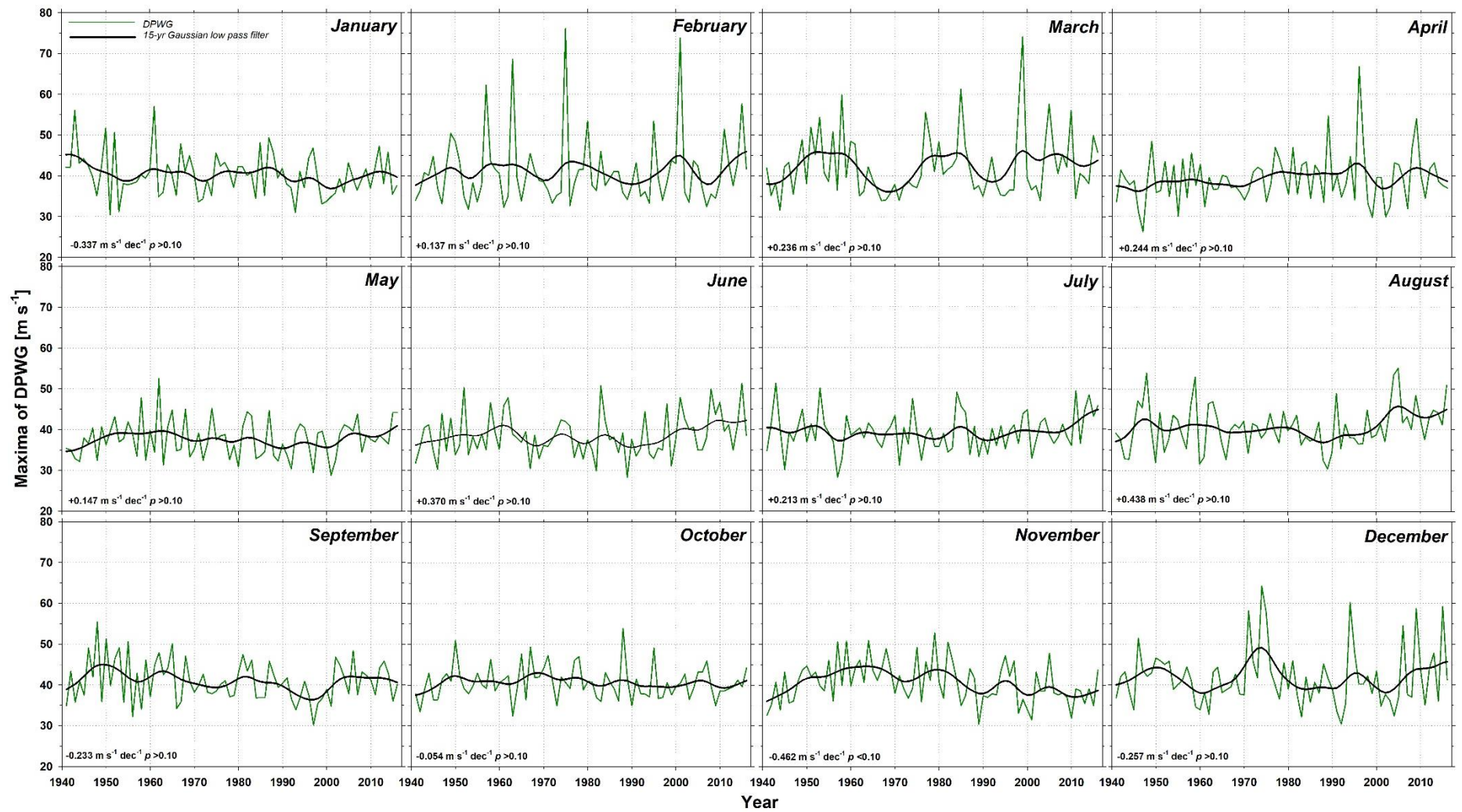


Figure S13. As in Figure S12, but monthly.