

The Morehead Independent

VOLUME III MOREHEAD, KENTUCKY, THURSDAY MORNING, APRIL 30, 1936 NUMBER 18

President Babb's Inauguration Scheduled Tuesday

First Period in Subscription Drive Closes Saturday

Votes Will Lose In Value Following 9:00 p. m. May 2nd

Candidate's Honor Rolls To Run All Through Second Period of Campaign

CAMPAIGN SEASON WILL BE HALF TERMINATED

Manager States That Entry List Has Closed to Make Supreme Effort

Workers and their friends should take particular notice of the first big vote reduction in our subscription campaign when our subscriptions lose their prize winning value. One year subscriptions will lose 500 votes, two year subscriptions will lose 1,500 votes live-year subscriptions will lose 15,000 votes if held over until the following week.

Friends of the various workers are warned that it is positively the highest vote offer of the race and never again during the campaign will subscriptions have the same value.

Votes and not the number of subscriptions nor the amount of money collected will decide the winners of the prizes. If you have received a subscription since this Saturday night, May 2, you should know that the time has come when the clock strikes 9 o'clock and the live candidates will make every effort to build up a lead, no matter how small, before the first big vote reduction goes into effect and well it can be said that now is the time for candidates to increase their vote totals.

In all affairs of this kind you usually find there will be big changes in the standing of the workers. First one will forge ahead and then another. Such changes are common in any game of competition, the prizes, to speak, will change hands often during the campaign. The first prize is invariably awarded to the candidate who can smile at what other folks might mean discouragement and stick to the fight through thick and thin.

Intense personal rivalry has begun to play the major role as the popular candidates are now in dead earnest, and some have voiced their determination to win at all hazards. It takes cooperation to put any worthwhile project through and it will take cooperation on behalf of the friends of the different workers to enable their favorite to "go over the top." All promises should be made good.

(Continued on Page 4, section 1).

INAUGURAL PROGRAM
May 5, 1936
10:00 a. m. Harry W. Peters, state superintendent of Public Instruction, presiding.
"America the Beautiful" Audience
Invocation, Henry Noble Sherwood, President Georgetown College.
Prelude, "Lohengrin" College Orchestra
Introduction of Official Delegates William H. Vaughan, dean Morehead State Teachers College.
"Polonaise Militaire" Foster Choral Club
Address, Alberte Benjamin Chandler, Former Commonwealth of Kentucky.
"Tales from the Vienna Woods" College Orchestra.
Address, Frank L. McVey, President University of Kentucky.
Audience
Oath of Office, William H. Rees, Judge Court of Appeals of Kentucky.
Inaugural Address: "The Sphere of the Morehead State Teachers in the Realm of Higher Education."
Harvey Arthur Babb, President Morehead State Teachers College.
"Landighting" Chorus and Orchestra
Benediction, John O. Gross, President Union College.
Response, Foster Choral Club.

Superintendent To Preside At Inaugural



HON. HARRY W. PETERS
Hon. Harry W. Peters who was elected superintendent of public instruction in November to succeed Supt. J. H. Richmond, will preside over the inaugural ceremonies of President Harvey A. Babb Tuesday morning. Superintendent Peters serves as an ex-officio member of the Board of Regents, having the authority to break tie votes.

Funeral Services For M. S. Johnson

Funeral services for M. S. Johnson, who died Tuesday night at the home of his son, William J. Johnson, were held from the Christian church Thursday with burial in the Lee cemetery.

DIED OF HEART DISEASE

Mr. Johnson died of heart trouble, following a long illness. He was well known in Morehead, having been in business here for many years. He owned and operated the first drug store in this city. Surviving are two sons, Melville and William and two daughters.

Funeral services were conducted by Dr. G. H. Fern and Rev. H. E. Moore.

Active pallbearers were John Calvert, Alvin Caudill, Ed Fannin, Roy Holbrook, E. H. Gevedon, James Rose and Chester Stinson. Honorary pallbearers were J. A. Anglin, J. T. Trumbo, J. H. Powers, S. M. Bradley, F. P. Blair, H. L. Wilson, S. M. Caudill, A. B. McKinney, E. Hogge and E. C. Burdick.

EAGLES WIN
Morehead's baseball team won from Louisville Friday 9-8.

Leora Hogge, Allie D. Chinn Tie For Highest Standing

Thirteen Students Have Average Of 2.5 Or Better At Morehead

REGISTRAR ANNOUNCES STANDINGS OF PUPILS
Morehead, Rowan County Students In Select Group At M. S. T. C.

Leora Hogge and Allie D. Chinn tied for high scholastic honors at the Morehead State Teachers College, mid-semester grades released from the registrar's office show. Students making an average of 2.5 or better are: Leora Hogge, 2.8; Allie D. Chinn, 2.8; Frances Abrams, 2.7; Robert Bishop, 2.7; Mrs. Goldie Childers, 2.7; Wellington Cochran, 2.7; Robert Stevens, 2.7; Woodrow Barber, 2.6; Oma Willoughby, 2.6; Mrs. Mabel Barber, 2.6; Joe Jackson, 2.5; Clyde Johnson, 2.5; W. D. Steele, 2.5.

Those making an average between 2.0 and 2.5 are, Oleta Amburgey, William Allen Barker, Mabel Blevins, Mary Beggess, Willis Borders, Lawrence Bowling, Eric Branham, Clyde Burton, Nell Cassidy, Ray Cassidy, Kenneth Cole, Elmer Cozins, Herman Couch, Roy Costin, Edna Couch, Bulene Crane, Willie Davis, Shirley DeBorbe, William E. Moore, Mrs. Alma Ziegler, Grace Francis, Mrs. Oculina Harmon, Mrs. Bernice Harmon, Fred Harmon, Paul Harmon, Gertrude Ison, Burns Jones, Janet Judd, Ralph Knapp, Mrs. Elizabeth Payne, William Linkous, Harry Lowman, Howard Moore, Philip Porter, William Ritchie, Daisy Rose, Fred Rose, John Crest, John Ruckon, Emma Street, Mrs. Vera Stapleton, Carl Stewart, Bernie Tuckey, Georgia Vaughan, Ira White, Alwena Wireman, and Harriett Womack.

Plan To Decorate City Next Monday

Business Men Urged To Cooperate With City In Project

START FRIDAY AT NOON

Complete decoration of the entire business district of Morehead for the inauguration of President Harvey A. Babb Tuesday is the objective of Mayor Haslan Blair and the City Council, according to a statement made by the sponsors today.

The Luelynn Decorating Company, Knoxville, Tenn., has been employed to provide material and labor for the project. This firm was in charge of decoration arrangements at the unveiling of the Boone Memorial in Harrodsburg last year, and a majority of the cities in which President Roosevelt spoke on his 1935 southern tour were decorated by the Luelynn company. Local business men are urged to cooperate with the City Council by accepting the services of the Knoxville specialists, who will decorate the store fronts in appropriate colors and string large banners across the main streets at strategic points. Decorating is scheduled to begin Friday at noon under the personal direction of Lew Luelynn, who will be assisted by two expert designers.

Ernest Alderman, 14, Is Poison Victim

Blood poisoning, resulting from a shoe that rubbed, caused his death this week of Ernest Alderman, 14, son of Mrs. E. J. and Mrs. Moody Alderman of Morehead. Funeral services were conducted yesterday at the home of the condition of the boy did not grow serious until Monday morning, when he was rushed to the hospital. Attempts there to thwart the spreading poison were of no avail.

Class Plans Two Plays On May 13

Two plays will be presented by the Play Production Class of the Morehead State Teachers College on May 13 in the auditorium. "The Futility Four" is the title of the first play to be presented. Characters include Anna, Mae Young, Woodson Dale, Avonia Crosthwaite, Bessie Birchfield and Elizabeth Baldrige. "English Blood," a drama of the Kentucky mountains, will be the second production. This drama was written by Rev. B. H. Kazee pastor of the Morehead Baptist church.

District Women's Clubs Meet May 8

Morehead Women's Club, Rowan County Women's Club Joint Hosts
8th DISTRICT INVITED
The Women's Club of the Eighth District of Eastern Kentucky will hold a joint meeting in Morehead on Friday, May 8, it was learned here today. The convention will be principally in the nature of an open forum.

The Woman's Club and the Rowan County Woman's Club will be joint hosts for the meeting. The program will include a luncheon, a business session, and a social hour.

All clubs in the Eighth District have been invited to send delegates, while both of the local clubs are invited to send a representative of their organizations present at the meeting.

Brown Released On \$5,000 Bond Here

Charged With Slaying Homer Conley, 21, In Tolliver Addition

Bill Brown, 45, charged with cutting and wounding his step son-in-law, Homer Conley, with intent to kill, on Sunday, April 19, has been released from the Rowan county jail on \$5,000 bond. Jennings said that Conley is in a Lexington hospital, suffering from a knife wound near the heart. Although his condition is critical he has become some better.

Brown waived examining trial. Officers who arrested him said that Brown stabbed Conley while the latter was in bed. The stabbing happened at Brown's home in the Tolliver Addition of Morehead.

Plan Exhibit Of WPA Center Work

An exhibit of materials and specimen of work from the WPA adult and nursery education classes is being planned for Saturday, May 9, beginning at 10:30 a. m. and continuing until 9:30 p. m. The WPA Federal Music Project workers will give a short musical program in connection with this display, beginning at 2:00 p. m. Beginning at 7:30 p. m. this same group together with several players from Boyd county will give a complete musical program of old folk songs and mountain ballads. The program will be directed by Jean Thomas of Ashland. A small admission charge will be made for the evening program.

BANQUET SCHEDULED TO BE HELD SATURDAY

The Morehead Woman's Club has invited the public to a banquet to be held at the Christian church Saturday, May 9, at 6:30 p. m. Those desiring to make reservations should contact Mrs. G. D. Propoy at her home. Tickets will not be sold at the door.

BRECK WINS
Breckinridge Training School won two first events at the music contest in Lexington Friday.

M.S.T.C. Alumni To Meet On May 27, Sec'y - Treas. Says

Banquet, Ball Are Main Features Of All Day Meeting of Graduates

ELECT OFFICERS TO HEAD ASSOCIATION
Roy E. Cornette Is Present President; Mary Alice Calvert, Secretary

Annual Alumni Day at the Morehead State Teachers College has been scheduled for Wednesday, May 27, according to Mary Alice Calvert, secretary and treasurer. Principal features of the all-day program are a banquet and ball from 6 to 12 o'clock Wednesday evening. Registration of alumni will be held at 9 o'clock in the Administration building. A brief program at convocation exercises has been arranged by the graduates of the college.

Announcement of officers to succeed Roy E. Cornette, president; M. H. Holliday, vice-president; and Mary Alice Calvert, secretary and treasurer, will be made at the luncheon schedule for 12 o'clock in the cafeteria. The board of directors and nominating committee have been mailed to members of the association, and within the next three weeks the ballot will be returned to Miss Calvert for tabulation.

Candidates are Bernice Goodwin and Ova Haney, president; Roy E. Cornette, vice-president; and Mary Alice Calvert and Katherine Powers, secretary and treasurer. Miss Calvert has served as secretary for the past two years.

A free movie for the graduates has been arranged by the theater committee in the afternoon of Saturday Day. Tentative announcement has been made by President and Mrs. H. A. Babb to entertain the old students with a tea at 4 o'clock Wednesday.

Indications are that the King'sesters orchestra will provide the music for the ball, which is scheduled to start from 9 o'clock. At 6 o'clock D. J. Gammage will serve the banquet dinner in the college cafeteria for graduates and students.

Breck Students In Lexington Contests

Six Glee Clubs Leave Today For Events at Lexington

TRAVEL IN SPECIAL CAR

Breckinridge Training School of Morehead State Teachers College will be represented by six glee clubs in the Kentucky High School musical contest and festival at the University of Kentucky Friday May 1. There will be a Mixed Chorus from the Junior High School and one from the Senior High School; there will be a boys Glee Club and a girls club from each of the high school divisions. Over 90 pupils are involved in these six groups.

The Senior High School chorus and glee clubs are directed by Lewis H. Horton, head of the Department of Music, of Morehead State Teachers College; the Junior High Boys Glee Club is directed by Marvin E. George, while the Junior High Chorus is rehearsed by both Mr. George and Mr. Davis and will be directed in Lexington by Mr. George.

Last year only the mixed choruses participated. This year the boys and girls are singing separately as glee clubs and it is hoped that these groups will make as fine a showing as the mixed choruses did last year. The singers will travel in special cars on the C & O, leaving on the first train Friday and returning on the last. First and second places in these various events are no longer awarded in the contest manner. Instead each participating individual or group is rated according to merit.

Governor Chandler, President McVey, Judge Rees Scheduled To Appear On Inaugural Program With New President

Provisions Made For Elaborate Banquet In \$100,000 College Cafeteria After Official Ceremonies Completed

VAUGHAN SLATED TO INTRODUCE DELEGATES FROM KY. SCHOOLS

Babb To Receive Official Oath May 5



HARVEY ARTHUR BABB
Harvey Arthur Babb, who is scheduled to receive the oath of office president of the Morehead State Teachers College Tuesday morning sometime between 10 and 12 o'clock, is a native of Caldwell county, Kentucky, having received his preliminary education in a one-term rural school near Morehead, Ky.

In September, 1935, he was offered the executive post of the college by the board of regents, and composed of the Hon. J. H. Richmond, superintendent of public instruction, Dr. J. M. Rose, Olive Hill; ex-Judge E. W. Seiff, Mt. Sterling; Dr. A. O. Taylor, Mayville; and Judge D. B. Caudill, Morehead. He succeeded Dr. J. H. Payne, resigned.

President Babb is a graduate of the University of Kentucky. (Continued on Page 4, section 1)

Inaugural ceremonies for Harvey Arthur Babb, former Mt. Sterling superintendent of city schools, as the third president of Morehead State Teachers College, will be conducted Tuesday morning at 10 o'clock by leading educators, statesmen and clergymen of Kentucky in the college auditorium.

Judge William H. Rees, chief justice of the Kentucky Court of Appeals, will administer the oath of office to President Babb.

Official and unofficial delegates from every principal important state institution, city and school district have signified their intention of witnessing the formal inauguration. Arrangements for entertaining in the college auditorium have been made by a faculty committee. Interested visitors will be conducted through the buildings on sight-seeing tours, arranged by the office of President Babb.

Provisions for a banquet in the College's \$100,000 cafeteria have been made by school authorities, and every official delegate is expected to attend the 12 o'clock luncheon.

Kentucky's Democratic Governor A. B. Chandler has consented to deliver a personal address at the inauguration. Dr. Frank LeRond McVey, for the past 19 years president of the University of Kentucky and distinguished economist, will be on the speaking roster.

President Babb has announced the subject of his acceptance message as "The Sphere of the Morehead State Teachers College in the Realm of Higher Education." (Continued on Page 4, section 1)

Don't Quit

IS YOUR WISHBONE WHERE YOUR BACKBONE SHOULD BE?
The Race is now more than half over—there are but three weeks remaining after this coming Saturday night.

When things go wrong as they sometimes will, When the road you are treading seems all uphill, When subscriptions come slow, and refusals mount high, And you want to smile but you have to frown, When care is pressing you down a bit, Rest if you must—but don't quit you! Success is failure turned into self-conviction, The silver tint of the clouds you doubt, And you never can tell how close they are, It may be near when it seems afar, So stick to the job when you're hardest hit— It's when things seem worse that you must quit.

The following named contestants in the Independent Subscription Campaign are leading in the field by a small margin so that they have remitted to the campaign department the greatest number of clubs in subscription collections up to and including last Saturday night. A Club is \$20.00 in cash remitted to the office.

Bays, Mrs. J. A., Morehead Ky.
Johnson, Mrs. W. H., Farmers, Ky.
Wills, Mrs. Clifford, Salt Lick, Ky.

The following named contestants have remitted the next greatest number of Clubs. This does not mean to say that this group is tagging away behind in the list. A worker can be in the second group in so far as her Club collections are concerned and still have a many or even a few more votes than any one listed in the first group. Beware of the fact that New and Extensions gives the worker a larger number of Votes.

Aikins, Miss Geneva, Haldeman, Ky.
Earley, Mrs. Sue, Clearfield, Ky.
Lewis, Miss Vivian, Vain, Ky.

The next group of contestants has not as yet come into their full stride, but we are looking for big things from them this week.

Tatum, Miss Corinne, Morehead, Ky.
Vansant, Miss Mary, Sandy Hook, Ky.

In listing the above named names no effort has been made to show the relation in which they actually stand, we simply follow the calling of always listing the names alphabetically. If You Want Your Favorite to Win You Must Say It.

With Subscription

The Morehead Independent Official Organ of Rowan County

Published each Thursday morning at Morehead, Kentucky

by the INDEPENDENT PUBLISHING CO.

William J. Sample and Geo. M. Calvert Editors and Publishers

Office and Plant, Corner Carey Ave. and Railroad St., Telephone 235

Entered as second-class matter February 27, 1924, at this postoffice at Morehead, Kentucky, under Act of March 8, 1879.

Subscription: In Kentucky, \$1.50 per year; outside Kentucky, \$2.00.

ADVERTISING RATES MADE KNOWN UPON APPLICATION

The Independent makes no charge for anything in the furtherance of the cause of the Church and Christianity. Nothing for patriotic enlightenment, for education, for charity and the general human uplift.

Thursday Morning, April 30, 1936

HISTORY OF THE FOUNDERS OF THE MOREHEAD S. T. C.

The following, taken from a catalog of several years ago, gives a graphic and complete condensed history of the founding and location of Morehead College.

The Morehead State Normal School was created in 1922 by an act of the General Assembly of Kentucky. This act provided for the opening of two normal schools, one in Eastern and one in Western Kentucky, for the purpose of training white elementary teachers. Morehead and Murray were the locations selected for these schools by a commission named for that purpose. Since that time the name of the school has been changed twice as has seemed appropriate to its growth and organization. In 1926 it became the Morehead State Normal School and Teachers College, and in 1930 the present name of the Morehead State Teachers College was given. This same year similar changes were made in the three sister institutions of the State.

On September 24, 1923, the school opened with Professor Frank C. Button as its first president. There was a faculty of nine members and a student body of less than one hundred. President Button had served for twenty-five years as head of the Morehead Normal School, a private institution upon whose site the new State had been built. Before the end of the first year, the faculty had grown to thirteen members and the student body to two hundred and fifty. There has been since that time, an increase in the number of both students and faculty, as well as additions to the housing facilities.

The Morehead State Teachers College is located in Morehead, midway between Lexington and Ashland. It is reached by the Chesapeake & Ohio and the Morehead and North Fork railroads, and United States Highway 60, well known as the Midland Trail. It is the most accessible Kentucky institution of higher learning for the people of the Big Sandy and Licking River Valleys, and the Ohio Valley section from Ashland to Cincinnati. It is within easy reach of he people of both the Cumberland and the Kentucky River Valleys.

The campus of approximately seventy-five acres is composed largely of the wooded slope of a mountain, and stretches out toward the southeast into the practically level athletic field. This setting is of unsurpassed natural beauty. Added to the attraction of inspiring scenery are those of the mild climate and unusually cool summer nights. The campus, as well as the surrounding country, offers much of interest to the pleasure seekers, the lover of nature, the student, and the student of natural sciences. The lawns are terraced and face on a boulevard, which extends the entire length of the campus.

ONE YEAR AGO THIS WEEK

Seven hundred and one men and 56 women will be given work with a total expenditure of \$10,000 by the KERA in Rowan County during the month of May, the local office announced.

John Q. Adams, 81, died at the home of his daughter, Mrs. Gorge Clift at Soldier. The end came after a lingering illness of dropsy.

The Methodist Church took the lead in the "Gotto-Sunday-School" drive with an attendance of 124. The Church of God was second.

Morehead College's Debating Team finished an undefeated season for the mythical oratorical championship of Kentucky.

The Morehead State Teachers College offered to pay the city \$50 a month for the

use of its water tanks and to supply the municipal government water at 10 cents per 1,000 gallons. The offer was taken under consideration by the council.

Announcement was made by Dr. N. C. Marsh of a chiropractors clinic here on May 10.

"The Pied Piper" was scheduled at the college auditorium May 9, Lewis H. Horton directing.

The Morehead College Board of Regents passed resolutions lamenting the death of Senator Alie W. Young.

Blue ribbons for "physical protection" were awarded 180 Rowan school children by the Department of Health.

Vanceburg defeated Morehead 2-1 in a Kentucky State League game there.

Announcement was made of the marriage of Darlene Porter and L. C. Williams.

Dr. and Mrs. H. F. Ellington entertained Messrs. Mort Bowne and John Palmer and Mr. and Mrs. N. E. Kennard at a fish supper.

The marriage of Ruth Victoria Calvert and Joseph Russell Perry was announced by the brides mother.

WHAT OTHER KENTUCKY EDITORS ARE SAYING

HENDERSON TO SHOW ITS BLOSSOMS

Henderson, Ky., has decided to hide its light under a bushy no longer. It desires to share with those within driving distance of its delightful city on the banks of the Ohio something of the beauty which annually comes to the hillsides and slopes about the town. To that end Apple Blossom Festival Week has been proclaimed for the week beginning Easter Monday.

The Henderson Garden Club is sponsoring the event and Mayor Lee L. Hurley has issued a proclamation calling on the citizens to co-operate in entertaining their neighbors. Undoubtedly, however, credit for promoting this event must be given to Ben E. Niles, secretary of the Kentucky State Educational Society, who often proposed such a celebration, having observed the success which attends such occasions in the vicinity of Benton Harbor, Mich., and other fruit-growing centers.

Henderson County has long been celebrated for its excellent apples, Winesaps especially. The trees are expected to be in full blossom next week. They should be a sight worth seeing. — (Louisville Courier-Journal).

MARRIAGE COURSE IN CURRICULUM

From Syracuse University comes the news that a course in marriage has been added to the curriculum of that institution of learning. Acting on a petition signed by 613 students, university authorities arranged a series of lectures at which psychology, biology, sociology, home economics and religion as they relate to marriage will be discussed.

This year's course naturally is in the nature of an experiment, but Dean William Powers of the committee which arranged it has announced that by next year, it should be well worked out, specific and so through that ignorance of the factors that make marriage happy or dismal will be dispelled from the minds of the students who take the course.

"That the course can be extremely valuable is little doubted," says the Daily Orange, Syracuse University student newspaper, commenting on the innovation. "The increasing number of divorces and unhappy marriages prove that some sort of premarital instruction is necessary so that too many people don't blindly grope their way through the most important venture of their lives."

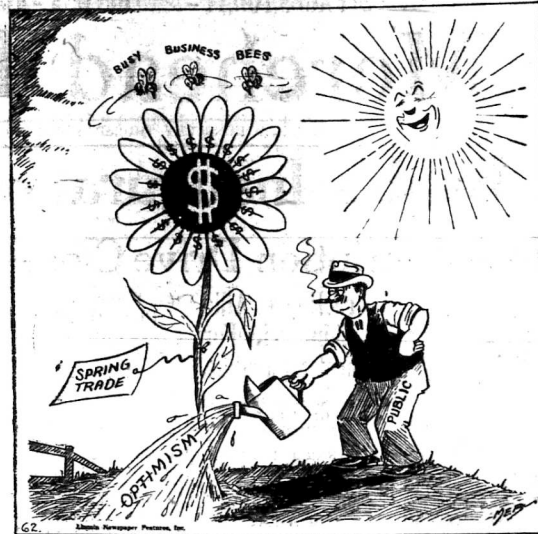
There is little doubt that Cupid arranges some very poor marriages. Whether his subjects, when the "love-bug" bites them, will remember what they learned in the marriage course, is an entirely different matter. At any rate, a modern university's course in marriage certainly offers a start.

The Allie Young Highway—U. S. 60 intersection in West Morehead is a death trap. It's about time the demands of the citizens for safety beacons be heeded.

In June the railroads are reducing fares to two cents per mile. It will be interesting to note what the busses will charge—certainly less than 2 cents.

The grand style parade is at hand. The Kentucky Derby will be held next month. If as many women went to the Derby to see the horses run as they do to see what the other woman is wearing, a four deck pavilion wouldn't hold them all.

SPRINGING UP!



Sandy Hook and Elliott County News

Mrs. H. W. MOBLEY, Correspondent

As a real example of how adult education is progressing in Elliott county, the example below written by Mrs. Nancy Williams, pupil in the adult class of Arnold Williams, who holds a class each evening, will be a mighty good example. It is true that in some instances there are some men, women and children who never had a real chance to attend school until this Educational Program came along. Now, due to the success of the program in Elliott county these same persons, who a year ago were not able to sign their own name are now so doing.

If You Really Want to Win By Nancy Williams If you want to have more knowledge...

Long for fortune and fame Get your books and paper ready This Adult School is just the thing.

It's no easy path to heaven, And no easy road to fame, Yet our life is what we make it It's no easy simple game. Yes, life's prize's call for fighting For some courage and some grit, And some strong determination With a don't believe I'll quit We must take our time and study Learn to spell, and also think

On this sea to fame and fortune, It's up to us, to swim or sink It requires a lot of thinking And a little self control We must use our brains and knowledge

If we ever reach the goal Uncle Sam has done his duty Made this school for you and me Let us try to win the battle And be glad this school is free

Face life with a cheerful grin If we always do our duty Then I think, that we might win Life is but an endless struggle On this grand old sea of time But when e're this school is ended We won't be so far behind Have a hope to win the battle And a will, to face the fight Always try to do your duty And to do what is just and right It will take a lot of working With an honest and firm set chin, And a strong determination If you really want to win.

Dr. and Mrs. A. M. Lyon of Morehead were the Wednesday evening guests of friends in Sandy Hook.

Mr. and Mrs. Walter Vansant attended a Bankers Banquet at Ashland at the Henry Clay hotel Saturday evening.

Dr. R. Eugene Wehr, son of Mr.

the marriage of her daughter, Mary Hannah Hunter, to Arnold Williams, son of Mr. and Mrs. Chad Williams of Tuscoe, Ky. Mrs. Williams at the present time is a student at the Morehead State Teachers College. Mr. Williams is at the present teaching an adult school near Roscoe, Ky.

Mrs. Beis Redwine, foreman of the Women's Training Work Center at Sandy Hook will hold open houses at the Project Room on Tuesday, April 28. This was postponed from April 17 due to illness of Mrs. Redwine. The principal speakers of the day will be Jack Logan Woodruff and Dr. R. L. Wehr. The public is cordially invited to attend this meeting.

Mrs. Emma Hunter announces the marriage of her daughter, Mary Hannah Hunter, to Arnold Williams, son of Mr. and Mrs. Chad Williams of Tuscoe, Ky. Mrs. Williams at the present time is a student at the Morehead State Teachers College. Mr. Williams is at the present teaching an adult school near Roscoe, Ky.

Billy Hugh, Mary Lou and Dorothy Jean King, who have been visiting with their grandparents the last week returned home on Monday afternoon.

Mrs. R. M. Clayton and daughter, Dorothy, here left Thursday morning for a visit with relatives in Huntington, W. Va.

Polly A. Kegley Faves Away Polly A. Kegley, daughter of Rev. Joel and Dillah Kegley, was born August 20, 1860, departing this life December 15, 1935. She was 75 years, three months and twenty-five days old. She had five brothers and three sisters.

Two brothers and one sister still survive her.

Her parents came from old Virginia. They were among the early settlers who came to Kentucky and located in Elliott county on the waters of Little Sandy where Aunt Polly was born and reared. She united with the Methodist church early in life.

Aunt Polly was a Pious, Godly walking member—and a good neighbor. Her conversation was Godly, inspiring, encouraging and her company pleasant.

She has only fallen asleep to awaken in Jesus. To awake in his likeness. To be with all the redeemed. So dear friends if you want to live with Aunt Polly, look to Jesus and live. —A FRIEND.

WE'RE SELLING MOST GAS TO THE SPAINARDS NOW The United States government has become the leading supplier of petroleum products to Spain during 1935, says a report to the Louisville District Office of the Commerce Department. Gasoline imports from the United States increased from 10,827 tons in 1934 to 240,710 tons in 1935.

BRITISH CONSUMPTION OF U. S. TOBACCO GAINS Consumption of American tobacco in the United Kingdom during the first two months of this year, as indicated by deliveries to manufacturers, showed an increase of 7 per cent compared with the corresponding period of 1935, according to a report to the Louisville District Office of the Department of Commerce. Imports during the January-February period exceeded those of the corresponding 1935 period by 17 per cent.

American oranges and grapefruit are becoming more popular in Czechoslovakia.

CHEVROLET



DRIVE IT! and drive home to yourself this truth: It's FIRST in its field because it's the only complete low-priced car

- NEW PERFECTED HYDRAULIC BRAKES
IMPROVED GLIDING WHEEL-ACTION RIMS
GENUINE FIBER NO DRAFT WHEELS
GENERAL MOTORS INSTALLMENT PLAN
HIGH-COMPRESSION VALVE-IN-HEAD ENGINE
SOLID STEEL one-piece TURBET TOP
SHOCKPROOF STEERING
ALL THESE FEATURES AT CHEVROLET'S LOW PRICES
\$495 AND UP

MIDLAND TRAIL GARAGE Morehead, Kentucky

MONUMENTS Our Impressive and Enduring Monuments Fully Guaranteed W. A. PORTER Elliottville, Ky.

GOLDE'S Most Important Spring Event WITH SAVINGS FOR EVERYONE



Dresses That Prove
Tied Up With

String \$4.95 and

Youthful, high-spirited styles—
destined to be among Summer's
brightest successes. Both tailored
and lay styles in lovely string
textures. Many have gay notes
of contrast in smart buttons, belts
or waist scarfs. Our price means
a decided saving!

\$7.95

Entire Stock
WOMEN'S AND MISSES'
SUITS and COATS
SACRIFICED
SAVE 1-3 to 1-2 NOW

Now!
JUNE PRESTON

FROCKS
For Big
Girls
\$1.00



better style - better value

Levine Dresses

Here is chic and good taste for every daytime occasion—
spirited, young frocks for both active and spectator sports as
well as dressier modes. In an arresting collection of silk
materials—so gay and new that they're exhilarating to look
at, and more exciting to wear.

Tailored silk dresses—su-
premely casual fashions with
a real thoroughbred air of
smartness.

12.95

Afternoon frocks in sum-
mery chiffons, lovely sheer
and a grand variety of beau-
tiful silk prints.

\$22.50



Clearance

Levine Frocks

Remarkable and Exciting Offering!

21 Lovely
**DEVINE
FROCKS**

\$9.98

Spring Prints —
Alpacalines —
Crepes —
Values to \$19.50



Style! ... Value!

**Sport
Felts**

Values to \$1.95

98c

White Dubonnet
Yellow Pink
Orchid Beige
Red Maris
Big Brims, Little Brims
Head sizes to 23 1/2

**SUN
SUITS**



For
Little
Tots

29c

All Fast
Colors
New dashing
little styles.

Something New!



Companion
SUITS

For Boys

BROADCLOTH
SEERSUCKER
COMBINATIONS
OF VALUES **\$1.00**



TO THE MEN !!

We Are Glad to Announce That We
Have Added

Arrow Shirts

and Underwear - to our Men's
Department

GRAYCO TIES - another
new addition to serve you better

GOLDE'S Department
Store

Lovely
LINGERIE
CHEMISES
DANCE SETS

SLIPS

Pure Dye Silks

69c

Slightly Soiled

OUR MISFORTUNE IS
YOUR GAIN—

Our roof spring a leak and
wet a whole table of lovely
lingerie and left water spots

— Values up to \$1.95 —



Curtain Scrim

500 yards — All new patterns in
prints and colors—Including white
Regular 15c Value **9c** yd.

FIELD'S HALL MORE-HEAD COLLEGE



Talking Picture On 4 Hoofs—Cozy

Jeanette MacDonald, Nelson Eddy Star In Film Here Sunday

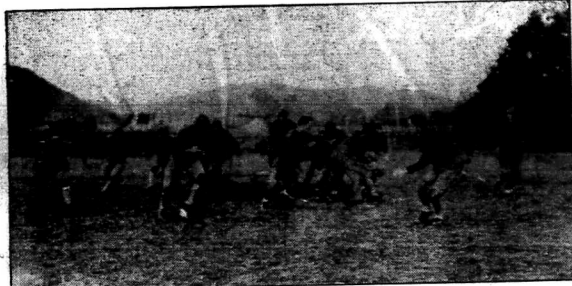
A talking picture studio on four hoofs! Such is the ingenious achievement by which the voices of Jeanette MacDonald and Nelson Eddy were recorded amid the peaks of the Sierra Nevada for "Rose Marie," their new musical romance, opening May 3 at the Cozy Theater.

perfectured under the supervision of Douglas Shearer, Metro-Goldwyn-Mayer recording chief, for the new picture. Through the use of tiny but efficient tubes it recorded voices and symphony orchestra high in the mountains. Despite its small size it can duplicate any recording operation on a studio sound stage. Often it was called on to record a hundred piece orchestra and several hundred voices in the mountains. And it was more difficult to transport the big tubes for the orchestra up the mountain trails than it was to transport the sound studio itself.

The ultimate to date in portable sound equipment, the new "super portable" weighs less than 200 pounds!

Subscribe to The Independent.

Morehead Football Team In Action



CODOLENE New Cod Liver Oil Ointment! More Soothing, Healing and Antiseptic than ordinary salve. Pleasantly perfumed. Use Codolene for burns, cuts, scratches, scalds and minor skin irritations. Keep a tube handy in your medicine chest. CUT COUPON AND SAVE 10c

New and Used FURNITURE We have recently purchased several carloads of furniture, and you will be able to furnish your home complete from our store. OUR STOCK IS COMPLETE OUR PRICES ARE LOWER THAN EVER BEFORE HOME FURNISHERS Roscoe Hutchinson, Mgr. Peoples Hotel Bldg. Morehead, Ky.

PRIMARIES ARE HELD

Presidential preference primaries in Pennsylvania and Massachusetts yesterday found President Roosevelt and Governor Alf M. Landon leading in contests in their respective parties on the basis of early returns. Scattered returns from Pennsylvania's Democratic presidential preference primary, in which President Roosevelt for the first time faced a candidate opposed to his renomination in a state-wide test, gave him a 16 to 1 lead over Col. Henry Breckinridge, New York attorney. The vote from 1,534 of the state's 7,983 districts Roosevelt 150,635. Breckinridge 9,252.

He was valedictorian of his class. After graduation he taught at Springdale (Ark.) High School and Henderson (Ky.) High School. In addition President Babb has been principal of the Ludlow and Frankfort High schools. From 1919 to 1925, he was superintendent of the Mt. Sterling City Schools. The new president is a member of the Kentucky and National Education Association and the Baptist church. He is president of the department of superintendence of the K.E.A. and former chief executive of the Bluegrass School Executives' League. He has served for four years as a member of the state board for vocational education. During his undergraduate career, President Babb played freshman and varsity football, managed the basketball team, was captain in the cadet battalion, a member of the University debating team, and president of the Patterson Literary Society.

President Babb's Inauguration May 5

(Continued from page 1, section 1) last important address on the inaugural program. Harry W. Peters, state superintendent of public instruction, has been designated to preside over the ceremonies. Dr. Henry Noble Sherwood, president of Georgetown College, will pronounce the invocation, and Dr. John Owen Gross, Union College, will render the benediction. William H. Vaughan, dean of the College, has been engaged to introduce the official delegates to the inauguration. The Foster Choral Club, Morehead's crack mixed chorus under the direction of Lewis Henry Hatton, has been secured to provide music at intervals during the ceremonies. Among numbers expected to be heard are "America the Beautiful," "Polonaise Militaire," "America," and "Landsighting." Accompanying the chorus will be the college orchestra.

Babb to Receive Official Oath May 5

(Continued from page 1, section 1) ington, having been awarded the bachelor of science degree in education in 1911, and the master of arts degree some years later by

SIX BOTTLES OF BEER!! Independent Staff Concludes Installation of New Linotype With Deal That Made Everybody Money— Even the Editor

By W. E. CRUTCHER Six bottles of beer... and therein lies a story. Gather round you children of finance, and we'll tell you a story, an account of a transaction in which everybody made money, nobody lost a dime. Six bottles of beer turned the trick. The Mergenthaler Linotype Company sold the Independent a type-setting machine, the purchase price—we'll leave that up to Editors Sample and Calvert for they did the paying—and believe you them it was plenty. In the transaction, however, the Independent was allowed \$500.00 on a trade-in for the old machine. To keep the story in a chronological order, we must say next that affable Charlie Blanchard, of Louisville, was sent here to install the new machine. After friend Blanchard set the new machine up, there came the question of the old linotype. "What'll you now take for that old machine," city-editor Crutcher asked of Blanchard. "Six bottles of beer." "Sold." Crutcher paid off six bottles of beer, and bought him a machine that the Mergenthaler Company had given \$500 for two weeks before. But there was a catch. The machine, which had been running faithfully for something like 30 years, must be destroyed—it was company's orders. So after Crutcher, who had worried many a month afraid that

1st Period In Closes May 2

(Continued from page 1, section 1) enable your contestant to reap the year's subscription. There seems to be some misunderstanding about the rules of the campaign. Some folks seem to think that there will be a late candidate whose name will appear in the list of workers after the campaign is nearly over and will have to be the winner of the auto. The manager wishes to correct this idea right now and for public information we state that the entry period for candidates is closed. One of the good ladies whose name appears in the list of contestants as shown in this issue, will win the auto—that much is certain, and all can be assured that no one else will be allowed to enter and participate. Beginning next week and continuing all throughout the Second Period of the Campaign is what is known as Honor Roll Week, and will be conducted as follows: There will be three Honor Rolls each week, the first one closing Tuesday afternoon at 6 p. m. and the worker remitting to the campaign department the greatest amount of cash in campaign collections for these two days will win First Place on the Roll of Honor and receive an extra \$9,000 votes. The worker remitting the Second greatest amount of cash for these two days will win Second Place and earn \$9,000 extra votes, and the one remitting the Third greatest amount will win Third Place and receive 20,000 extra votes. This arrangement will then be repeated for Thursday afternoon and also for Saturday, each Honor Roll will close at 6 p. m. sharp. Remember that these Honor Rolls will run for two full weeks, the duration of the Second Period. At the close of the last Honor Roll the worker who wins first place the greatest number of times will earn a bonus of 100,000 extra votes, the one winning Second Place the greatest number of times will earn a bonus of 15,000 extra votes and the one finishing in Third Place the most will earn 50,000 bonus votes.

This advertisement, under Section 2072 of the Kentucky Statutes (Carroll's Edition, 1915 and 1922), as amended by the Act of the General Assembly of Kentucky, Chapter 70 of the Acts of 1922, approved March 23, 1922, is to comply with the law and set forth the following: On the 2nd day of January, 1935, by commitment order of the County Court (Juvenile Session) of Rowan County, Kentucky, an infant named Ora Templeman, of female sex,

and six (6) years of age, was committed to said Society as a neglected and dependent child, and said Society will, in conformity with said Section as amended, proceed in due course to consent to and consummate the adoption of said infant by an Adoptor and according to such Adoptor the parental control of the infant. This advertisement is inserted and published once a week for four weeks in the Morehead Independent, a newspaper published in Rowan County, Kentucky, and the newspaper prescribed by said Section as amended. KENTUCKY CHILDREN'S HOME SOCIETY. W. E. Ewing, President. 30-7-14-21c.

Independent Ads Pay.

Subscribe to The Independent. men who know whiskey like Glenmore KENTUCKY STRAIGHT WHISKEY GLENMORE DISTILLERIES CO

ACID STOMACH It became popular about the same time as the Mechanical Refrigerator — We wonder if they are related — Impure Foods May Cause It. Take No Chances Have Moist Air Moving Air USE ICE Have Pure Air Cold Air — Call 71 — MOREHEAD ICE & COAL CO.

Visit Our New Place, Just Opened for BUSINESS A Good Place to Eat and Drink GOOD COFFEE — HOME COOKING HOT DOGS HAMBURGERS EGG SANDWICHES 5c 20c A GOOD PLATE LUNCH SERVED WITH HOT BISCUITS OR REAL CORN BREAD HUTCH'S PLACE Dora Hutchinson, Mgr. Opposite C. & O. Depot Morehead, Ky.

Barnes-Lane Co. Funeral Directors Ambulance Service Phone: 91 (Day)—174 (Night)

NEWEST DEVELOPMENT IN CARPET AND RUG CLEANING BY HILD SYSTEM SERVICE As licensed operators we bring you the finest workmanship - guaranteed protection against shrinkage - at prices actually lower than average for ordinary good cleaning. We use a cleaning fluid, which restores the original color and moth proofs. We also clean tacked down carpeting on your own floor. Model Laundry & Dry Cleaners Phone Us for Prices Telephone 116

LEST WE FORGET

9 p.m. Saturday Nite
May 2nd

Marks the Close
of the First and
Largest

VOTE PERIOD
of the

Entire Campaign

Votes lose as much as 25 per cent
after this date. **DON'T PUT OFF
YOUR PROMISE ANY LONGER,
MR. SUBSCRIBER, AS IT IS POS-**

SIBLE FOR YOUR FAVORITE TO WIN OR LOSE THIS WEEK

CANDIDATES: A WORD TO THE WISE IS SUFFICIENT!

DON'T WONDER WHY A
BLACK HEN LAYS A
WHITE EGG!

GET THE EGG!

THOSE WHO CAN -- DO!

THOSE WHO CAN'T -- CRITICISE!

SUCCESS, is not hunting
you! You must seek -
IT!

THEREFORE, success
must come in CANS! Not
CAN'TS!

SLEEP - and no one will
wake you!!

LOAF - and you won't
earn an award!!

Again Mr. SUBSCRIBER -

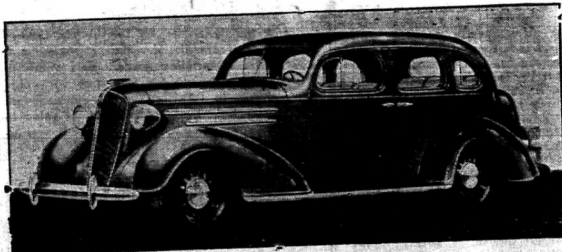
I SAY: GIVE YOUR SUBSCRIPTION NOW WHILE
IT COUNTS THE MOST FOR YOUR FAVORITE !!

Grand Capital Award

1936 CHEVROLET SEDAN

With Built-In Trunk

Value \$639.00



To Be Purchased from the Midland Trail Garage, Morehead

Head's Physical Ed



MISS ERNESTINE TROEMEL

Miss Ernestine Troemel, head of the Department of Physical Education at Morehead State Teachers College, writes in this issue of the beginning and development of this phase of college training.

Mr. W. W. Razor has been ill several days.

Mrs. C. T. Jones and three children, Violet Miller, J. Calhoun, and Glendora visited Mrs. Jones' father, Mr. H. M. Eads of Monticello over the week-end.

A play, "Full of Youth," was presented by the junior class at the auditorium Saturday night. The proceeds will be used to entertain the senior class of 1936. A birthday dinner was given in honor of Miss Anna Catherine Thompson at the home of Mrs. William Meeks Tuesday.

Rev. Murrell filled his appointment at the Methodist church Sunday.

Mr. and Mrs. Otha Silvers of Cincinnati, Ohio, were week-end guests of Mrs. Silvers' parents, Mr. and Mrs. J. N. Wright.

Another Advance Made by Church

Last Sunday marked another advance step for the program in 11 weeks campaign. The report last Sunday made the ninth report. The goal at first was set at

to last Sunday, counting the special already planned and carried out silverware project of the Women's Council was more than \$700.

The campaign that has been met with unusual success from the very first, closes on Mother's Day, Sunday, May 10. Final reports will be made. Envelopes are to be handed out by the division leaders to all for the special memorial Mother's Day free-will gift. And this gift will be credited to the division that each and every one belongs to. To perpetuate the memory of this important day a photograph will be taken of the assembly. Every church member and all friends of the church are invited to be present and appear in the picture.

The services next Sunday will be of unusual importance as they are the last gathering prior to the big day that is to be held on Sunday, May 10.

Subscribe for The Independent.

Independent ads pay.

MOUNTAIN DOLL TO BE EXHIBITED AT FRANKFORT

Development of Statewide
Homocraft Industry
Aim of Planners



This doll was not bought in a store, but was born of necessity. The children in a mountain home wished for dolls but there was no money for their purchase so the mother created one. Sawdust rods from the fields were carved into head, feet and hands. Home-brewed dyes gave life to her features and her mass of hair was sheared from sheep on the place.

Other mountain children wished for dolls. Then a few at a distance became entranced with her unusual face and figure so a small business developed.

Perhaps other dolls have been born in Kentucky. They should be exhibited in the Onward Kentucky Exposition, in the Capitol Building at Frankfort on June 5th, 6th, and the afternoon of the 7th.

If a small doll, mountain born, has found a limited market, the Shakertown Countryside Industries should be able to create a wider market for similar hand-made articles.

Generous state-wide prizes will be awarded to the articles in the exposition, which can best be utilized by the Shakertown Countryside Industries as models for standardized products for a wide market. These prize prizes will total \$200 in cash. It is understood that these articles become the property of the Shakertown Countryside Industries.

A letter to the Kentucky Progress Commission in the Capitol Building at Frankfort will bring additional information to anyone interested.

SALT LICK NEWS

Mr. and Mrs. Ed Bevins and two children of Ashland were week-end guests of Mrs. Bevins' sister, Mrs. Irvine Kash.

Betty Ray, daughter of Mr. and Mrs. Beckham Perry is in Lexington hospital with pneumonia. She was accompanied by her grandparents, Mr. and Mrs. T. H. Parry.

Mr. and Mrs. Jim Maze and Mrs. Ida Maze were dinner guests of Mrs. May Maze Sunday.

Mrs. J. P. Wood who underwent an operation last week is improving.

Mr. and Mrs. Clarence Cassidy of Carlisle visited Mrs. Cassidy's parents, Mr. and Mrs. Johnson Razor Monday.

B. H. TACKETT
412 Main St.
District Salesman
for the
Pioneer and A. Nash
Tailoring Co.
and
Robert Strong Uniform
Company

HANNA'S GREEN SEAL PAINT



... says the house owner.

For nearly fifty years
Hanna's Green Seal Paint
has been giving satisfaction.

Fifty years ago home
owners said that it's worth
the money and today they
still say the same thing.

Hanna's Green Seal is
honest paint... It is made
from materials that stand
up under the most rigid
tests.

If you wish to have a paint job that you can really
be proud of then get a good painter and Hanna's Green
Seal Paint.

MOREHEAD LUMBER CO. MOREHEAD, KENTUCKY

ELEGANCE and FEMININITY are
HERE & STAY AWHILE



Smart WOMEN
KNOW THAT BEAUTIFUL HAIR ACCENTS THE ENSEMBLE

CLAIROL

Dull, streaked or faded hair will not do
you justice.

Regular shampoos with CLAIROL Shampoo Oil Tint will leave your hair soft, colorful and glowing. Its rich oils and pure soap recondition the hair, cleanse and tint it, all in one short, pleasant treatment.

Mail this coupon with a three-inch strand of your hair and we will treat it and return it, postpaid, with our recommendations for CLAIROL treatment.

BEVERLY KING, Consultant
HAIR BEAUTY GUILD
18-19 West 42nd Street, New York City.
Name.....
Address.....
City.....

Delinquent Tax List of Property Owners of Rowan County for 1935

On Monday, May 4, 1936, at 1 o'clock p. m., or thereabouts, I shall offer the following property for sale to the highest bidder in the city of Morehead, for non-payment of taxes:

Table listing property owners and their details, categorized by town: Morehead, Farmers, and Hagtown. Each entry includes the owner's name, address, and acreage.

Table listing property owners and their details, continuing from the previous section. Each entry includes the owner's name, address, and acreage.

Table listing property owners and their details, continuing from the previous section. Each entry includes the owner's name, address, and acreage.

THE INDEPENDENT GET RESULTS!!!

Advertisement for Eagle Cleaners, featuring the text 'TRY OUR FIVE-POINT PLAN FOR YOUR DRY CLEANING NEEDS' and 'EAGLE CLEANERS'.

Large advertisement for 'He Wants to Buy!' featuring an illustration of a man in a suit and a woman, with text describing a business opportunity.

Morehead Plays Louisville Nine Friday Afternoon

Kentucky's Tennis Team Opens Play

Blue and White Netters Defeat Wayne University By 5-2 Count

The University of Kentucky's tennis team, faced with the toughest schedule in the history, captained by a Rhodes Scholar, and composed of six-top-notch players, began its 1936 season last Saturday with a 5-2 victory over Wayne University of Detroit, Mich.

On the Wildcat schedule are such formidable foes as Tennessee, Vanderbilt, Indiana, Cincinnati, Purdue, Michigan State and Notre Dame. With opposition like this, Coach H. H. Downing and his aggregation expect to impress collegiate tennis and win recognition in the national spotlight.

The Blue and White roster boasts of such players as co-captains Jim Al Moore, formerly of Madisonville, now of the Rhodes Scholar from Hickman, George Tulloch, Okmulgee, Okla. It is a highly rated racketeer and Bobby Evans and the Randall brothers, all of Lexington, are the other prominent members of the squad. Shortly before the Washington, D. C. and Elvis Stahr, the Rhodes Scholar from Hickman, George Tulloch, Okmulgee, Okla. It is a highly rated racketeer and Bobby Evans and the Randall brothers, all of Lexington, are the other prominent members of the squad.

Subscribe for The Independent.

Intelligent Use Of Land, One Goal Of New Farm Plans

Ultimate Aim of Rehabilitation Program Is To Furnish New Program

By JOSEPH L. DAILEY
Assistant Administrator

The Resettlement Administration has a rehabilitation program today because millions of farm people are in danger of starving or becoming permanent relief charges unless they are given a new chance to readjust their farming through scientific planning.

In order to reestablish destitute and low income farm families on a firm economic footing we have under taken to do three things: first, to see that the farmers have adequate land on which to farm; second, to see that they have adequate equipment with which to carry on farming operations; and third, to see that they have adequate technical advice in farm management.

Loans are made for the purchase of farm supplies, for the renting of land, for the repair of farm equipment and buildings, and for subsistence. Repayment of these loans is partially assured by mortgages and liens on property and crops. But the principal assurance which the Resettlement Administration desires is the assurance that these families have a permanent basis for rehabilitation. This is furnished by the farm management plan which the farmer with the help of the County Rehabilitation Supervisor and the

Walter Jackson, 16 College Athletic Figure, Succumbs

Member of Basketball, Tennis, Swimming Team Passes Unexpectedly

BECAME ILL SUNDAY

Walter B. Jackson, Jr., 16 year old son of Professor W. B. Jackson, Instructor in the Department of Education at the Morehead State Teachers College and former Principal of the Ashland Senior High School, died unexpectedly here at 4:00 o'clock Monday morning, following an illness of less than a day.

Walter, who was a freshman at Morehead College, played tennis and worked out with the College swimming team Saturday afternoon. His complaint of feeling bad Saturday night, but was not forced to bed until Sunday morning. From that time his condition turned from an apparently minor ailment to critical.

Dr. A. W. Adkins, Morehead physician, who attended him, attributed death to pulmonary hemorrhage.

Walter was a member of the Morehead College Freshman basketball team, the Morehead swimming team and the tennis team. He was also active in other college extra-curricula activities. He played basketball at Ashland High School.

Records at the college show he was born May 18, 1919. Mr. and Mrs. Jackson came here in February, 1935, with Mr. Jackson as a member of the faculty on the teaching staff of the College. Walter did not come to Morehead to Morehead to graduate which he did at that time.

Funeral services were conducted from the home on Main Street at 2:00 p. m. Tuesday afternoon. The body was then taken to Mayslick for interment. The Jacksons are originally from Mayslick, Mason County.

Palbearers for the funeral were Bruce Henderson, of Ashland, a classmate at Morehead College; Frank Henderson, of Ashland; Hugh and John Yancy, Mayslick; Crawford Adkins, Morehead; and George H. Adkins, a Morehead College student. The funeral rites will be conducted by the Rev. Charles Collins of Mayslick.

Surviving are his father, W. B. Jackson; his mother, Ida Yancy Jackson; one brother, Joe, and one sister, Katherine, all of Morehead.

County Agricultural Extension Agent. The immediate aim of these farm plans is to provide a means whereby the farmer can support his family and pay his debts to the Resettlement Administration and to other creditors. The ultimate purpose is to furnish the farmer with a live-at-home program of diversified farming and intelligent land use which will in some measure insure him against adverse economic conditions.

Through a small loan, which will be repaid, and agricultural advice may a good farmer has been saved to continue the intelligent cultivation of his own farm.

TODAY, LAST CHANCE TO CATCH FISH UNTIL JUNE

A warning has been issued by the State Fish and Game Association that May is a closed month on fishing. Game wardens have been instructed to make renewed efforts this year to arrest violators of this closed season.

Today is the last day that fish can be caught legally in any manner in Kentucky until June 1. This law has been in effect for several years to protect game fish during their spawning period.

Swimmers Train For Match With Kentucky May 6

Nine-Man Team to Represent Morehead in Meet With Blue, White Squad

EARL K. SENFF PICKED TO DIRECT SWIM STARS

Eastern, Western, Berea May Appear on Schedule of Local Varsity

The Morehead College swimming squad under the tutelage of Earl King Senff is doing some serious training in preparation for a match with the University of Kentucky independents at Lexington May 6.

Charles Morris and Casper Borst, the former a speedster from Frankfort and the latter an Indiana scholastic champion, are the two outstanding prospects to report for practice. Others out for the squad are Ed Bell, Sam Bradley, Charles Hall, Howard Eckles, John Francis, Joe Jackson, Walter Jackson, Joe Marshall, Ed Farley, Alton Payne and several others.

In addition to the meet with U. of K. Coach Senff is attempting to pick matches with Eastern, Berea and the University of Louisville. Should these schools accept the offer for inter-collegiate matches there will be a great deal of rivalry, and the title honor to be desired by the participants in, and the capture of, the various events.

Records at the college show he was born May 18, 1919. Mr. and Mrs. Jackson came here in February, 1935, with Mr. Jackson as a member of the faculty on the teaching staff of the College. Walter did not come to Morehead to Morehead to graduate which he did at that time.

Kentucky Derby To Be Run Saturday

Kentucky's greatest sporting event—the Kentucky Derby—one of the outstanding horse races in the world—will be run at historic Churchill Downs, Louisville, Saturday afternoon.

At least 15 horses are expected to go to the post. Brevity ruled a top favorite to day to win the race.

Upwards of 60,000 people are expected to witness the great classic. It will be broadcast over a station-wide hook-up.

Over 9 per cent more U. S. farms were operated by their owners in 1935 than in 1930.

Morehead Defeats Flemingsburg In Exhibition Match

Pirates, Led by Ryan, Grab 4-0 Lead in First and Win By 10-6

CARTER HOMERS IN 3rd Leslie Scatters Flemers 12 Hits as Winners Make 16 Safe Plays

An exciting four-run lead in the first inning, the Morehead Pirates, won an exhibition baseball game Sunday from Flemingsburg 10-6. The Pirates led throughout, and were never in serious danger. They enabled the Pirates to cross the plate four times.

Ryan, Morehead third baseman, was in superb form, getting a triple, double and two singles in four times up, besides batting in four runs and handling six chances flawlessly. Carter, the pitcher, collected three in three of five trips.

Dale went the entire route for the winners, managing to scatter Flemers for 12 hits, but the Pirates made 16 safe blows, off the offerings of Plymouth, Keatley and Gavin.

Armen Frley had grounded out in the first inning. Vinson and Carter got on base through an error. Arzenen fled out, but Ryan collected a single, scoring them both, and advancing to second on the throw in. Varney singled, scoring Ryan, took second on the throw, and was out on a fly to the pitcher for the fourth run. Martin led Jones' grounder get through him, Flemingsburg counted one of its first runs. Ryan issued bases on balls to Hauck and H. Craycraft, the former scoring on Jones' bobble.

Both teams scored once in the third frame, Morehead on Carter's home run, and Flemingsburg as D. Gallagher and T. Gallagher hit together a single and double. Morehead scored the ball game up in the fourth, forcing Plymouth to leave the game, with a barrage of extra base hits. Fannin grounded out, but Dale doubled, Frley tripled, Vinson tripled, Arzenen got a two bag and Ryan cleared the sacks with another triple that came near being a home run. Ryan's blow was on Keatley, who selected Plymouth.

Craycraft's double and Gallagher's single enabled the losers to score once in the fifth, but Morehead made with a Kline 2-6 sixth on doubles by Ryan and Carter. Two base blows by Craycraft and Gavin and Kline's single gave Flemingsburg two more in the seventh but the damage had already been done, and the Pirates finished with Dale pitching in top spot.

The box score:
Morehead AB R H PO A E
Frley, 1f 6 1 1 1 0 0
Vinson, 1b 5 1 1 5 0 0
Carter, 2b 5 3 2 1 4 1
Arzenen, cf 5 1 2 0 1 1
Ryan, 3b 5 1 4 0 0 0
Boush, rf 5 0 0 0 0 0
Jones, ss 5 0 1 4 3 2
Gavin, r, p 3 0 2 0 0 0
Clayton, c 5 0 0 0 0 0
Dale, p 5 1 3 0 2 0
TOTALS 46 10 16 27 15 4

Flemingsburg AB R H PO A E
Hauck, if 4 1 0 3 0 0
D. Gallagher, 1f 1 1 4 1 1
H. Craycraft, cf 4 2 2 2 2
Gallagher, 3b 5 1 2 1 2 2
Martin, ss 5 1 1 1 0 1
Kline, 1b 5 0 2 8 0 0
Ryan, r, p 5 0 0 0 0 0
Boush, rf 3 0 0 7 0 0
O. Craycraft, c 1 0 0 2 0 0
Plymouth, p 2 0 1 2 0 0
Keatley, p 3 0 0 0 0 0
TOTALS 42 6 12 27 8 4

Summary: Home run: Carter. Three base hits: Ryan, Vinson. Two base hits: Frley, Carter, Arzenen, Ryan, Dale, Craycraft, H. Gallagher, Gavin. Run batted in: H. Gallagher, 3, Kline 2, Gavin, Ray 4, Varney 2, Carter, Frley, Vinson, Arzenen. Struck out by Dale 3, Keatley 5, Gavin 3. Hits off Plymouth: 9 in 2-3 innings. Gavin 4 in 3 innings. Base on balls off Dale 2. Stolen bases: Kline, Carter, Loring Ryan, Plymouth. Umpires—Grierson and Wilroy.

Score by innings:
Morehead R B O 401 010 000-10
Flemingsburg 101 010 201-6

The 1935 tobacco crop of Poland was planted in an area of 13,378 acres, as compared with 10,435 acres in 1934.

COMMISSIONER'S SALE

THE COMMONWEALTH OF KENTUCKY
ROWAN CIRCUIT COURT
Florence Cunningham, et al., Plaintiff,
VS. (NOTICE OF SALE)
E. J. Richards, et al., Defendant.

By virtue of a judgment and order of sale of the Rowan Circuit Court rendered at the March term thereof 1936, in the above captioned case, for the sum of Fifteen Hundred Dollars, with interest at the rate of 6 per cent per annum from the 22nd day of April, 1934, until paid and its cost therein I shall proceed to offer for sale at the Court House door in Morehead, Kentucky, on the 1st day of May, 1936, at One O'clock P. M., or thereabout, upon a credit of 3 months, the following described property, to-wit:

- One 2 1/2 Horse Power Air Compressor
- One Grease Panel Outfit
- One Hydraulic Lift
- Two 20,000 gallon bulk storage tanks

All the above property located in the City of Morehead, Rowan County, Kentucky, on the lot known as the Cosmograph lot and in the Cosmograph Building.

Thirty-nine gas pumps and twenty-nine (29) Gas Tanks, located at various points in Rowan, Elliott, Carter, and Bath Counties, and for a particular and definite location the Cosmograph lot and herein is referred to, which order is of record in the office of the Clerk of the Rowan Circuit Court.

Also the following described property:
12 cuts—380-60 gallon kerosene outfits, serial No. 133227-38.
1 cut 819 Barrel Pumps, 1 1/4 H.P. Air Compressor 32 VDC
1 Model T 131 Air-Over-Service 3129329.

One one-third H.P. 18 gallon tank compressor.
Or sufficient thereof to produce the sum of money so ordered to be paid. For the purchase price the purchaser must execute bond, with approved securities, bearing legal interest from the day of sale, until paid, and having the force and effect of a judgment. Bidders will be prepared to comply promptly with these terms.

NELLE PROCTOR,
Master Commissioner,
Rowan Circuit Court.

Teachers Initial Home Game Will Be Played May 13

Leslie or Dale To Get Starting Pitching Assignment Against Cardinals

TEACHERS 9 UNKNOWN QUANTITY THIS SEASON

Downing Encounters Difficulty in Scheduling Sufficient Games For Team

Morehead College's baseball team—an unknown quantity will officially get its spring campaign launched Friday, meeting the Cardinals of the University at Louisville at Louisville. Louisville will appear here in a return engagement May 26.

Louisville holds a decisive victory over Lindsey-Wilson but lost to Eastern 9-8 in a game replete with errors. The Cards will be favored in this engagement, but if the Eagles get the pitching expected they may come through.

Coach Downing has again run into difficulty in arranging a suitable schedule, since most schools have abandoned baseball as a sport. Only four games now appear on the Eagles schedule, but Downing is dickering with Western, Transylvania, Murray, Lindsey-Wilson, Pikeville, Marshall, Lincoln Memorial and Marietta for matches. Some of these are expected to come through to give the Teachers a wooden case.

Ed Leslie or Woodson Dale will get the starting pitching assignment against Louisville. Dale was effective in a Kentucky State League tilt Sunday, but Leslie has not been seen in action this year. Morehead will not play at home until May 13, unless other games are scheduled. The card:
May 1 Univ. of Louisville there.
May 9 Eastern at Richmond.
May 13 Eastern at Morehead.
May 26 Louisville at Morehead.

Dr. L. A. Wise
Optometrist
Burt Building
FRIDAYS ONLY

Our complete stock of Whiskey, Wines and Cordials include the leading brands from both imported and domestic stocks.

We are featuring Garden Club MINT GIN, a cool, refreshing drink. Mint flavored.

The Morehead Dispensary
Next Door to Postoffice



The Morehead Dispensary

Next Door to Postoffice



Over 3000 miles of scenic water travel in the largest steamer devoted exclusively to the cruise. Devoted to the pleasure of the passenger. Dining, music, floor shows, deck sports and social evening and finest ball room on the lakes. 500 staterooms and parlors. Wonderful food and service. Stop over on any of our routes. Mail the coupon for beautiful free booklet.

7 DAYS \$49.50
as low as
The CLEVELAND & BUFFALO TRANSIT CO.
811 7th Street, Pittsburgh
Cleveland, Ohio

Guarantee: Send us your beautiful illustrated brochure and we will send you a booklet on the weekly vacation cruise on S. S. SEABOARD.

LIST YOUR REAL ESTATE WITH US.

- Investment Property
- City Property
- Building Lots
- Acres
- Farms

We are able to dispose of most every type of property.

Morehead Realty Co.

Caskey Bldg. Phone 91 Main St.

1934 Chevrolet Master Sedan
1933 Chevrolet Sport Coupe
1933 Chevrolet Coach
1931 Chevrolet Sport Sedan
1930 Ford Tudor
1929 Chevrolet Coach
1930 Whippet Sedan

Midnight Trail Garage

Morehead Kentucky

Dudley Garage

FLEMINGSBURG, KENTUCKY
All Inquiries and Mail Orders Attended to Promptly.

HARNESSES

NOW IS THE TIME TO PURCHASE YOUR HARNESSES. BE PREPARED FOR SPRING WITH GOOD, DEPENDABLE HARNESSES FROM A DEPENDABLE HOUSE.

SPECIAL APRIL PRICES

SOCIETY

TELEPHONE 235 OR 252

President and Mrs. Babo Entertained
President and Mrs. H. A. Babo entertained with a contract bridge last Thursday evening at their home on the campus. Four tables of bridge were in progress with Mrs. C. B. Lane winning high score for the women and Mr. W. H. Rice receiving high score for the men. At the conclusion of the bridge rubbers, a lovely luncheon was served to Mr. and Mrs. W. H. Rice, Mr. and Mrs. C. B. Lane, Mr. and Mrs. R. D. Judd, Mr. and Mrs. J. M. Clayton, Dean and Mrs. W. H. Vaughan, Mrs. Naomi Claypool, Miss Virginia Conroy, Miss Juanita Robinson, Mr. Neville Kinzel, guests-of-honor, Mr. and Mrs. Russell Smith, of Nashville, Tennessee, and the host and hostess, Mr. and Mrs. H. A. Babo.

Surprise Announcement Is Given of Marriage
An announcement of marriage that will come as an agreeable surprise to their many friends and acquaintances in this vicinity, is that of the marriage of Mr. Graydon Hackney, son of Mr. and Mrs. J. F. Hackney, of Second Street, in Miss Lillian Crisp of Paintsville. Mr. Hackney who was graduated from Morehead State Teachers College last June, is now employed as a teacher in the Harlan High school. Mrs. Hackney, who is also a Morehead graduate, is teaching this year in the Paintsville High school. Plans for the permanent residence of the young couple have not as yet been announced.

Mr. Jack Hargis of Frankfort spent the week-end here with friends.

Messrs. Bill Holmes and Herman Meadows stopped in this city Friday enroute from Lexington to their home in Fullerton.

Mr. George Young was sponsor of a hike and marshmallow roast for his tenth grade class near North Fork, Monday evening. There were approximately 30 students from the sophomore class of Breckinridge Training school that participated in the picnic.

Mr. Frank Edna of Brooklyn,

New York, is visiting for several weeks, at the home of Mr. and Mrs. Drew Evans, Jr. Mr. Liana was a former classmate of Mr. Evans at Duke University.

Miss Kathryn Daniels, Mr. Alvert Joseph and Mr. Jesse May were business visitors in Huntington Monday.

Mr. Oscar Hall spent last week-end in Russellville with her husband who is employed in that city.

Miss Doris Penix was shopping in Lexington Saturday.

Mrs. Wathan Guilett who has been very ill at her home with an attack of influenza, is reported as much better.

Mr. Donald Thornton was a week-end visitor with friends at Willmore.

Mrs. W. K. Kinney was a business visitor in Lexington Monday.

Mr. Dick Clay who is attending the school of law at Louisville, spent the latter part of the week in Morehead with his father, Mr. James Clay.

Mr. Paul "Mouse" Combs of Charleston, spent the week-end here with friends.

Mr. and Mrs. Ed Fannin and Mr. and Mrs. Wallace Fannin and daughter, Ruthanna, were Sunday visitors in Flemingsburg.

Mr. and Mrs. Eulace Dobbins spent the week-end with their parents at Glenwood and Louisa.

Misses Kathryn and Norma Powers and Mrs. E. D. Blair were shopping in Lexington Saturday.

Mr. F. S. Whitney of Huntington was a business visitor in this city Monday.

Mr. and Mrs. Johnny Green and son, John Sydney, of Sandy Hook spent the week-end in this city with Mrs. Green's parents, Mr. and Mrs. Syd Alfrey.

Mr. and Mrs. Drew Evans, Jr., Judge D. B. Caudill, Mr. C. P. Caudill, and Mr. D. C. Caudill attended a bankers meeting in Ashland Saturday evening.

Miss Julia Perkins and Mr. Herbert Elam spent Saturday in Lexington with Miss Perkins' father who is confined in a hospital there.

Mr. and Mrs. Charles Stant and Miss Anna Lee Martin spent the week-end in Lexington and Cincinnati.

Mrs. Clarence M. Allen of Lexington is visiting this week with her parents, Mr. and Mrs. Robert

Young on Main street.

Mr. and Mrs. Robert Anglin spent Thursday in Lexington where Mr. Anglin returned to his work.

Mr. and Mrs. James Clay were business visitors in Lexington Thursday.

Miss Anna Jane Day of Frankfort spent the week-end in this city with friends.

Miss Katherine Purcell of Carlisle spent the week-end here with friends. Miss Purcell was a former student at the college.

Miss Florence Jackson, daughter of Mr. O. L. Jackson, is very ill at her home with influenza.

Miss Lydia Marie Caudill has returned to her home here after spending the week-end in Huntington with her sister, Mrs. F. Whitney and Mr. Whitney. Miss Caudill who was formerly employed by the government under Mr. Elden Redwine, is now employed by Mr. Walter Swift, owner and operator of the Morehead Lumber company.

Prof. Ben Kidwell, superintendent of the schools of Russell, Kentucky, was a guest of Dr. G. H. Fern last Saturday.

On last Sunday afternoon Dr. G. H. Fern conducted the funeral services of John W. Hyden at his home in Farmers. Burial was in the Carey Cemetery. Mr. Hyden was more than 73 years old at the time of his death. His two sons, John and Arch, and daughter, Mrs. Martha Christenson, of Newcastle, Indiana, were present for the funeral.

Dr. G. H. Fern, Mrs. Fern, and Mrs. O. P. Carr, were callers in Flemingsburg and Maysville Monday afternoon.

Mr. and Mrs. Dwight Pierce spent the week-end in George City with relatives.

Mr. Murvel Crosby and Mr. J. M. Clayton were business visitors in Cincinnati Monday.

Mr. and Mrs. Mert Ridge of Atlanta, Georgia, arrived here Wednesday to spend several days with Mrs. Ridge's parents, Mr. and Mrs. J. A. Amburgey.

Mr. and Mrs. Lester Caskey spent last week in Georgia and Florida.

Mr. Homer Adams an Ashland contractor, spending this week with his brother, Mr. J. H. Adams and family.

Mr. and Mrs. Edward Bishop were shopping in Huntington Tuesday.

Miss Maxine Cox of Greencup was a week-end visitor in Morehead.

Miss Grace Cassidy spent Monday and Tuesday in Mt. Sterling with friends.

Mr. Russell Meadows a stu-

dent at the University of Kentucky, spent the week-end here with his wife and her parents, Mr. and Mrs. Alvin Caudill.

Mrs. E. Hogge and grandson, Bobbie, were shopping in Ashland Saturday.

Mr. David Nickell of Hazard spent the week-end here with his father, Dr. H. L. Nickell.

Ann Harding Star At College Sunday

"The Witness Chair" Feature Of Program; Walter Abel Cast

Strongly reminiscent of "The Trial of Mary Dugan," the Broadway success in which Miss Harding took the town by storm, "The Witness Chair" is packed with entertaining drama, intrigue and romance. A series of dramatic episodes in a courtroom lead to a thrilling climax in which Miss Harding calls forth her entire repertoire of histrionic artistry. The picture will be shown at the College Theatre Sunday.

A man's life at stake for a crime he did not commit, his daughter on the brink of disgrace, the woman who loves him trying to protect him—such heart-rending situations authored by Rita Weiman in her Cosmopolitan magazine story are forcefully developed in this RKO Radio Picture.

Miss Harding portrays the secretary of a man who is accused of the murder of his business partner. She herself accidentally shot this partner, and is forced to live through a harrowing trial in which the prosecution seeks to obtain a murder conviction against her boss. Her courtroom confession is recommended as one of the most dramatic screen moments we have ever seen.

Most of the action of "The Witness Chair" is confined to a courtroom, but flashback sequences indicating pertinent situations leading to the trial offer a variety of interesting action.

Performances equal the drama of the story in excellence. Walter Abel as the accused business man and Miss Harding's lover turns in a convincing characterization. Douglas Dumbrille offers his customary high calibre performance as the "heavy." Monte Olin as a police officer is impressive and Frances Sage, a recruit from Broadway, handles her initial

Fern Pastor of Christian Church



Dr. G. H. Fern, whose article on the founding of the Morehead State Teachers College appears on Page 1, Section 2; is pastor of the Christian church, the institution that founded the old Morehead Normal School.

Margaret Hamilton, William Benedict, Hilda Vaughn, Paul Harvey, and Murray Kinnell are worthy of mention for their splendid contributory roles.

Japan's pyrethrum output was especially heavy last year, reaching 24,400,000 pounds according to estimates made by the Department of Commerce.

Weekly Payroll

Free Credit Coupon

GOOD FOR 10 FREE CREDITS

VOID AFTER MAY 31st

Address _____

Collect all these Coupons you can. Get your friends to save them for you. CLIP NEATLY. DO NOT HOLL OR FOLD.

Anticipating a large increase in the consumption of fine-sured lettuce both in the domestic market and in Great Britain, Canadian growers are planning to increase the area under cultivation.



W. W. FOURIE, DIST. MANAGER

College THEATRE

Friday, May 1

"The Music Goes Round"

STARRING

Harry Richman
Rochelle Hudson
Walter Conolly

ALSO

Pathe News
Going Places
Thrills with Dardevils
Sinbad the Sailor

Sunday, May 3

ANN HARDING

— In —

"The Witness Chair"

ALSO

Silly Symphony (color)
Speed Mad
Hunter's Paradise

JUST RECEIVED
a nice ASSORTMENT of Potted Geraniums
Choice **25c**
BRUCE'S

Cozy
Saturday Warner Baxter Gloria Stewart in "The Prisoner of Shark Island" 3 REELS SHORTS
Sunday - Monday Jeannette Mac Donald Nelson Eddy in "ROSE MARIE" 3 REELS SHORTS
Tuesday, May 5 Charles Starrett in "Gallant Defender" Episode 9—Custer's Last Stand
Wednesday-Thursday Edmund Lowe Virginia Bruce in "Garden Murder Case"

Desirable Property For SALE

A SIX ROOM Modern home and 13 lots about one and one-half miles from Morehead, a real bargain for \$1250.00.

45-acre farm with modern improvements good house with hardwood floors, good tobacco barn and all necessary outbuildings, two good orchards, just 5 miles from Morehead on a good road.

Liberal terms, can be bought for \$1,000.

Morehead Realty Co.
Morehead, Kentucky

A & P Prices Nailed Down To Stay Down

MILK	Whitehouse Evaporated	4 Gall Cans	25c
Bulk Peanut Butter		10 lb.	10c
Iris Brand Prunes		2 lb. box	10c
Assorted Jelly		8 oz.	10c
VINEGAR	Rajah Pure Br. Cider	Qt. Btl.	10c
A & P Ammonia		qt. botl.	10c
Kutol Cleaner		3 cans	19c
Furniture Polish		Bt.	10c
CORN	Jean of Arc	No. 2 Can	10c
G. M. Twist Bread		24 oz.	10c
Sunnyfield Corn Flakes		1 lb.	9c
Choice Rolled Oats		3 1/2 lb. pkg	15c
LIMA BEANS		4 No. 2 Cans	25c
Ruler Prepared Mustard		qt.	10c
Apple Butter		38 oz. jar	15c
Soda Crackers		2 lb. box	15c
SOAP	Sweetheart Toilet	4 Bars	19c
Firm Ripe Bananas		4 lbs.	17c
Florida Oranges		doz	25c
Fresh Pineapple		2 for	25c
PABST-ETT Haddock Fillets	Plain or Pimento	2 Pks.	33c
Sliced Cod Steak		2 lbs.	27c
Sliced Dried Beef		1/4 lb. pkg.	15c
Sea Bass	Fresh Dressed Pound		10c

W. W. FOURIE, DIST. MANAGER

A & P FOOD STORES

The Morehead Independent

VOLUME III.

MOREHEAD, KENTUCKY, THURSDAY MORNING, APRIL 30, 1936

NUMBER 18

Chorus, Orchestra Furnishes Music For Inauguration

Prof. Horton's Arrangement, "Polonaise Militaire" To Be Rendered

WAGNER'S "LOHENGRIN" INCLUDED IN PROGRAM

Audience Will Be Requested To Sing 'America'; One Other Number

The Stephen Foster Chorus and the college orchestra, under the direction of Lewis H. Horton and Keith P. Davis, respectively, will provide the music for the inauguration of President Babb Tuesday morning.

The chorus will sing unaccompanied Mr. Horton's choral arrangement of Chopin's "Polonaise Militaire." Accompanied by the orchestra, Grieg's "Landsighting" will be given. The academic procession is scheduled to march to Sweden's "Swedish Coronation March," played by the orchestra. One other selection, Wagner's prelude to "Lohengrin," is included in the orchestral repertoire.

The audience will be requested to sing "America" and "America, the Beautiful."

Members of the chorus are: soprano—Jane Scott, Alene Huff, Mary Jane Beattie, Janet Judd, Kathleen Williams, Evelyn Dale, Virginia Harpham; alto—Katherine Blair, Kathleen Shinkle, Georgia Vaughan, Evelyn Harpham, Virginia Caudill, Mary Olive Boggess and Thelma Carmichael; tenors—Clyde Smith, George Rachford, Dallas Cornett, Davis Stephens, Julian Dorsey, J. Lewis and J. P. Niccoli; basses—Leo Oppenheimer, Oreville Grubb, Chas. Schweitzer, Gordon Hickney, Murrel Blair, Crawford Adkins and Howard Eckles.

The orchestra is composed of (Continued on Page 8, Section 2)

Governor Chandler to Deliver Address



Honorable Albert B. "Happy" Chandler, was elected governor of the Commonwealth of Kentucky in the gubernatorial race last fall, succeeding Hon. Ruby Laffoon. He has been engaged to deliver one of the principal addresses on the inaugural program.

Before election to the position of chief executive, Gov. Chandler was lieutenant-governor. In 1929, he represented Woodford and other counties in the state senate. Previously he had practiced law in Versailles, his adopted home.

Gov. Chandler received the bachelor of arts degree from Transylvania College in 1921, and the bachelor of law degree from the University of Kentucky three years later.

FREE DANCE AND MOVIE SPONSORED BY COLLEGE

A free dance and movie, sponsored by the Campus Club in conjunction with the steering committee of the inauguration, have been scheduled for Tuesday night. The King's Jesters orchestra, under the direction of Earl King Senff, has consented to play for the dance free of charge. The free show will begin at 7 o'clock. At the conclusion of the cinema the dance will begin, lasting through 12 o'clock.

Luncheon Will Be Held At 12 Noon

Appetizing Menu For Delegates To Be Served In Cafeteria

Luncheon for delegates and visitors to the inauguration of President Harvey A. Babb will be served by Director D. J. Gammage in the College cafeteria Tuesday at 12 o'clock.

The cafeteria has been painted this week, and adequate floral decorations have been secured for the luncheon. According to Mr. Gammage, the menu will include shrimp cocktail, celery, stuffed gherkins, fried chicken, stuffed potatoes, green peas, strawberry short cake and other items.

The auditorium stage, on which the inaugural ceremonies will be held, will be decorated with baskets of flowers and ferns against a light taupe cyclorama, the latter of which has been especially ordered for the event, according to the decoration committee.

The school colors, blue and gold, will predominate in the color scheme.

Twelve members of the faculty are employed in the Department of Education, the College's largest and most important division.

Morehead Normal Founded In 1887 By Ky. Christian's

Dr. F. C. Button, Pastor Of Church First President Of School

CHRISTIAN CHURCH SEES DEVELOPMENT IN YEARS

Gave Campus of Present State Teachers College To State In 1923

The First Christian Church dates its early history back to the beginnings of community development when Morehead was but a large village without paved streets or modern conveniences of any kind. The first services of the church were held in the county court house.

From 1884 to 1887, all church services in the town and community were irregular and intermittent. Finally Doctor Guerrant, a Presbyterian minister, succeeded in inducing the churchly minded people to erect a Union Church Building, in which all might meet and worship at stated and appointed times. The Union Church Building stood on or near the site of the present First Christian Church edifice. Finally, the organization of the First Christian Church, by purchase, came to own this Union Church Building, which, with repairs and alterations served as a house of worship until the erection of the present building in 1925.

The present edifice, one of the creditable church buildings of the state, is located on the site of the old Union Church Building, just east of the court house square, with the imposing buildings of the Morehead State Teachers College in the background.

An event of historical importance, not only to the church and Morehead, but to all Eastern Kentucky, was the founding in 1887.

Mrs. Allie W. Young Regent On Board



MRS. ALLIE W. YOUNG Mrs. Allie W. Young, who was appointed to the Board of Regents early this year by Gov. A. B. Chandler to succeed E. K. Senff, Mt. Sterling, is the widow of Judge Allie W. Young, former senior regent and State Senator who died February 18, 1935. Mrs. Young resides in Morehead.

of the Morehead Normal School, with Mrs. Phoebe E. Button and her son, Dr. F. C. Button, as teachers.

From the time of the organization of the Morehead Normal School to its close in favor of the Morehead State Teachers College church and school were closely affiliated. The corner stone of Burgess Hall and Hudson Hall repose at the front entrance of the church, and photographs of Mrs. Phoebe E. Button and Dr. F. C. Button hang on the walls of the church parlors. The Morehead Normal School has given place to another great institution, and many of the friends, donors, teachers and benefactors of the school have passed to their reward, but "their works follow a-

(Continued on Page 8, Section 2)

More Than \$691,000 Expended For 3 Buildings At MSTC

Money Borrowed From Special Fund Under Administration of President

DORMITORY, SCIENCE, POWER STRUCTURES

Work Now Under Way On All But Power Plant, Which Is Practically Completed

Under Franklin Delano Roosevelt's Administration, Morehead State Teachers College has received three separate loans and grants aggregating \$691,000.

In December of 1934, the Public Works Administration approved an application, endorsed by Congressman Fred M. Vinson, Senator Allie W. Young, and ex-Congressman John Young Brown, for \$255,000 for the construction of a heat, water and light plant on the campus. The structure has been erected approximately 500 yards southeast of the school—between the Chesapeake & Ohio railway line and Triplett Creek on property purchased from E. E. Maggard and Charlie Proctor. Abandonment of the old power plant will be completed by June 1, and operations are expected to begin soon afterward in the new building.

Construction of a new science building and dormitory has been made possible through two other grants from P.W.A. Work began this month on the two additions, the former of which is to cost \$225,000 and the latter, \$181,000. At least seven months will be required to complete the buildings, which are being erected on tracts purchased from Worley Hall and Arthur Hogge and Charles Keeton. The latter property, on which the science building is to be located, (Continued on Page 8, Section 2)

Rowan County's Official Family

Reiterates its policy of co-operation, and extends congratulations

To

THE MOREHEAD STATE TEACHERS COLLEGE

and

Its New Leader --- President Harvey A. Babb

WE REALIZE FULLY THAT THE MOREHEAD STATE TEACHERS COLLEGE IS ONE OF ROWAN COUNTY'S GREATEST ASSETS -- EDUCATIONALLY, MORALLY AND FINANCIALLY AND PLEDGE OURSELVES TO ALWAYS FOSTER ITS PROGRESS AND WELL BEING.

CHAS. E. JENNINGS, County Judge
MORT MAY, Sheriff

C. V. ALFREY, County Court Clerk
JOE McKINNEY, Circuit Court Clerk

Organize Science Department Under New Plan In 1927

Dr. A. Y. Lloyd, Head, Outlines Functions of History and Political Science

By DR. A. W. WELTER
Head of Science Department

In the fall of 1927 the Science Department was organized to include Agriculture, Biology, Chemistry, Geography, Home Economics, and Physics. The personnel of the department consisted of Mr. Roy E. Graves, Chemistry and Physics; Mr. H. C. Haggan, Agriculture; Miss Effie King, Biology; Miss Catherine Braun, Geography and Home Economics. This organization was maintained for a year when Mr. John L. Sullivan was added to teach Biology and Agriculture and Mr. F. Allen to teach physics.

In 1929 Agriculture and Physics were made separate departments and in 1932 Home Economics became a separate department. From that time the department has been composed of Biology, Chemistry, and Geography. Within the life span of the department the science faculty has included: Miss Effie King, Mr. John L. Sullivan, Mr. Everett Blair, Mr. Bradshaw, Miss Katherine Carr, Mr. Wilfred A. Welter, Mr. Clarence Nickel, and Mr. T. N. Graves, Mr. John L. Sullivan, and Mr. Ernest Hogge in Chemistry; Miss Catherine Braun, Mrs. Dudley Caudill, Mr. Wurtz Jayne, Mr. Willard R. Jillson, Miss Inez Moore, Miss Ella O. Wilkes, Miss Winifred Mailey, Mr. Ernest Hogge, Mr. Oscar Wagner, and Mr. H. R. Mathews in geography.

At present the members of the department are Mr. Welter, Miss Carr, and Mr. Sullivan in Biology; Mr. Hogge and Mr. Sullivan in Chemistry, and Miss Wilkes, and Miss Braun in geography.

The courses in Biology are planned to prepare teachers to teach biology in high school and Nature Study in the elementary school, to prepare students for medical and dental work, and to awaken an interest in biology from a cultural standpoint. A number of courses are offered which are concerned in familiarizing the students with the native flora and fauna of eastern Kentucky. A museum, containing more than 200 birds, 50 mammals,

Speaks Here Tuesday



Dr. Frank L. McVey

Dr. Frank LeRond McVey, president of the University of Kentucky, Lexington, has been scheduled to speak Tuesday at the inauguration of Harvey A. Babb as president of Morehead State Teachers College.

Degrees awarded the Lexington educator are A.B., Ohio Wesleyan University; Ph.D., Yale University; L.D., Ohio Wesleyan and the University of Alabama.

Before coming to Kentucky Dr. McVey was president of the University of North Dakota. He is a member of the distinguished Cosmos Club of Washington, D. C. Among books written by the president, who is an authority on ecology, are "Populist Movement," "History and Government of Minnesota," "Modern Industrialism," "Financial History of Great Britain," and others.

30 fishes, 30 reptiles, and 30 amphibians all found in this section of the state, has been built up by the department. Specimens are constantly being added to this museum. An insect collection of several hundred forms is also part of the museum. The herbarium contains 750 mounted plants of this section of the state. Field trips are taken to many different regions to study the plant and animal life in its natural habitat. Several courses are offered in structural and functional biology which train in gross and microscopic morphology and physiology.

Because it is with us every day we cannot afford to ignore chemistry, and we find it in the curriculum of every college, and many

high schools. Educators have realized that, aside from the necessity of training technicians for our huge chemical industry, chemical knowledge should be a part of our general culture. Knowing the process of making rayon, wool substitutes, and cellophane from corn stalks is a bit of cultural knowledge. It might be well worth while for a student of economics to know that the production of sulphur is one of the most sensitive barometers of industrial activity, due to the fact that it is the basic chemical from which sulphuric acid is made.

Chemistry is a necessary tool also in medicine, agriculture, home economics, plant and animal physiology, and related fields. This department recognizes that the college course in chemistry must meet these varied requirements and in addition, it must prepare those students who are planning to enter the field of chemistry, either as teachers or technical workers. The courses, therefore, offer a varied chemical experience.

In geography, survey and regional courses are offered in the content field, and methods courses are offered for training the student in organization of material to be taught in elementary and high school. In these courses the students use their own experience, the region immediately around them, adjacent regions, and the far world as it is brought to them in maps, books, and other library material. Effort is made, through study and writing, to lead the student to see that scientific knowledge of the earth and the application of that knowledge may lead man to a profitable adjustment, rather than a losing maladjustment, to natural conditions.

In short, geography offers opportunity to gain a knowledge of world-wide natural and cultural conditions. Such a knowledge is a necessary part of a useful and cultural education, and will help the student to become a wisely sympathetic member of local and world society.

BEAUX ARTS CLUB ORGANIZED IN 1935

The Beaux Arts Club was organized in the fall of 1935 by members of the art classes of the College and of the art department faculty, Mrs. Naomi Claypool and Ralph M. Hudson, who is also sponsor of the Trail Blazer.

The club visited the art museum of Cincinnati last fall.

Officers are Robert Alvey, president; Hubert Webb, vice-president, and Aileen Waltz, secretary.

Renders Benediction



Dr. J. O. Gross

John Owen Gross, president of Union College, Barbourville, will pronounce the benediction at the conclusion of the inaugural services of President Harvey A. Babb.

Before becoming president he was pastor of the Barbourville Methodist church. In addition President Gross is a member of the Ecumenical Conference, National Education Association, Association of Colleges and Universities of Kentucky, Masonic Order and Kiwanis Club.

He received the bachelor of arts degree at Asbury College, Wilmore, and the degree of doctor of divinity from Lang Seminary, Cincinnati. He has pursued graduate study at the Universities of Cincinnati and Kentucky.

'Le Club Francais,' One of Old Groups

By KENNETH FERN

President Le Club Francais, Le Club Francais was founded in 1929 by Lela Shepherd, then head of the department of foreign language. In 1932, Dr. Emma O. Bach succeeded Miss Shepherd as departmental head and club director.

Officers of the club are Kenneth Fern, president; Herbert Webb, vice president, and Christine Thaw, secretary and treasurer. The purpose of the club is to give its members training in the

various forms of French speech, customs and habits; to increase interest in the study of France and French-speaking countries and to provide a means of social

contact for the members. During the spring a study of French music and musicians has been made. Some consideration has been given to the masterpieces

of French literature including Cornille's "Le Cid." Parties and picnics are frequently resorted to by the club for recreation.

FIVE OF THE EIGHT EMPLOYEES OF EASTERN KENTUCKY'S FASTEST GROWING NEWSPAPER

— ARE —

FORMER MOREHEAD COLLEGE STUDENTS

We are more interested than the average Moreheadian in seeing the Morehead State Teachers College progress. We welcome the new President of our "Alma Mater," knowing that under his guidance and leadership that its achievements will be supreme.

WILLIAM J. SAMPLE GEO. M. CALVERT
W. E. CRUTCHER A. K. MOORE
MRS. W. E. CRUTCHER

Independent Publishing Co.

PRINTERS PUBLISHERS

A Dependable Advertising Medium

What Is Time Worth To You?

Time — With its infinite capacity for stealing quietly by us without being noticed, is often the cause of insecurity in old age. The fact that one's earning capacities are not everlasting seems of minor importance when young. Too often, however, has this attitude been proved wrong; time is deceiving, and it does pass swiftly, so start now while you can afford it. Open a savings account, no matter how little you start with, and lay the foundation for that much coveted security in the days to come.

WE NOW PAUSE TO OFFER CONGRATULATIONS AND BEST WISHES TO THE MOREHEAD STATE TEACHERS COLLEGE AND TO ITS NEW PRESIDENT HARVEY A. BABB.

Citizens Bank
MOREHEAD, KENTUCKY

There Must Be a Reason . . .

Why the Midland Trail Garage sold more cars in the past 12 months than any one place did in the state located in a city the size of Morehead. The Midland Trail Garage did it! THERE MUST BE A REASON —

There Is A Reason . . .

Every used car that the Midland Trail Garage sells, has first been carefully checked for any defect. The motor has been gone over in our complete and modern repair department. From radiator to rear bumper a used car from the floors of the Midland Trail Garage has received a most complete overhauling. And — there is the question of our economical prices, and adaptable time payment plan. THAT IS THE REASON.

and to

Pledge Our Full Cooperation

To The

Morehead State Teachers College

The Midland Trail Garage
Chevrolet Dealers

Morehead College's Debating Team Finishes Second to Wake Forest in South Atlantic Debate Tournament; Lloyd Coaches These Boys



Above is Morehead State Teachers College's crack debate team, which finished second to Wake Forest (N.C.) College in the South Atlantic Debate Tournament in March.
Front row: Earl Dean, Dr. A. Y. Lloyd, coach, and Alton Payne. Back row: Howard Eckles, Adrian Uterback, Clyde Burton, Thomas Rogers and Eliza H. Hogge.

YWCA Established 12 Years Ago

By MARY CLAY LEDFORD, President of Y. W. C. A.
The Y.W.C.A. was first established on the Morehead campus in 1924. Ever since it has made its influence felt. Standing for Christian ideals it has endeavored to have a part in building fine characters among the ever increasing student body. It has inaugurated regular vesper services, held each Sunday evening and sunrise prayer meetings the week preceding Easter, also a Christmas party for the under privileged children of the community.

to become acquainted and adjusted to their new environment. The profit from the two candy shops has been used to form a student loan fund which has enabled many worthy students to remain in school. Each year the organization has sent its quota of funds to the state and national organizations. Four former presidents, Misses Nelle Cassidy, Mary Lewis, Dorothy Hesson, and Esta Botts have gone to Blue Ridge, N. C., to the national convention. The presidents have been Misses Nelle Cassidy, Dorothy Hesson, Mayme Lewis, Frieda Humphrey, Esta Botts, Florence Hall, Mildred Whitt, Ann Dameron, and Mary Clay Leford. Sponsors of the organization are Misses Inez Faith Humphrey, Eth-

el Morehouse, Katherine Braun and Curraleen Smith.
BASKETBALL TEAM HAS AVERAGE OF .555
Six varsity basketball teams at Morehead have played a total of 81 games, winning 45 and losing 36 for a percentage of .555. All of the fives were coached by G. D. Downing, athletic director and varsity coach at the college. The teams of 1930, '31 and '32 were not members of the Southern Intercollegiate Athletic Association, but beginning in the season of 1933-34, Morehead was entered against S.I.A.A. competition in this state and elsewhere in the South.



Measure Your Home By Its Lumber

A house is as good as the lumber that goes into its construction. Good quality, properly cured, dependable lumber will make your house a better home, with less upkeep cost free from warped floors, cracked walls and excessive deterioration. See us for dependable lumber at the lowest price consistent with quality.



EVERYTHING FOR BUILDING

When you plan to build or repair, let your first thought be of this organization. We are equipped to render any type of service to aid the owner or builder from plans to finished product—plus materials of tested quality priced to make his plans inexpensive to carry out and his building permanently satisfactory.

We Invite Your Inquiry Without Obligation

MOREHEAD LUMBER CO.

Congratulations and Best Wishes For President Babb

Shady Rest Service Station

and **TOURIST HOME**

The Home of General Tires - Good Gasoline

and

CLEAN, COMFORTABLE BEDS

Takes This Opportunity

to wish

A Full Measure of Success

to

President Babb

IN HIS ENVIABLE POSITION

AS THE LEADER

of

THE MOREHEAD STATE

TEACHERS COLLEGE

SKIDDING PROBLEM SOLVED
with new Corkscrew Safety Tread

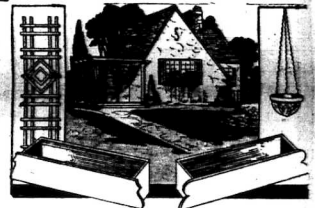
GRIPS LIKE A CORKSCREW

This new General Tire has overcome winter's greatest driving fear for thousands. Utterly different from any other tire—its winding, twisting tread design grips like a corkscrew—provides positive traction in every direction—holds you safe from side skidding and forward slipping. Come in for amazing demonstration and learn how easily you may have these new, safer and longer wearing Generals.

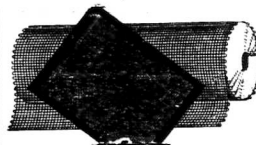
SHADY REST
THE NEW GENERAL
ULTRA-LOW PRESSURE TIRE
with Silent Safety TREAD

We attribute our ever-increasing business in a large degree to the continued growth and advancement of the Morehead State Teachers College. Needless to say we consider this institution our greatest civic asset, and we join with Moreheadians in congratulating the institution again this week for their progressive step in naming Professor Harvey A. Babb as its third president.

Make Your Plans Now!



If you plan for summer comfort before Summer starts you won't have any unhappy moments wishing you had done things sooner. Arrange with us now for whatever new screens you need. Plan any new lattices, window boxes, porch lights that would make your summer more enjoyable. Then, when the first hot spell comes, you can weather it coolly and pleasantly.



FOR SUMMER COMFORT AND BEAUTY

We extend congratulations to President Harvey A. Babb, and hope his success at Morehead is unlimited.

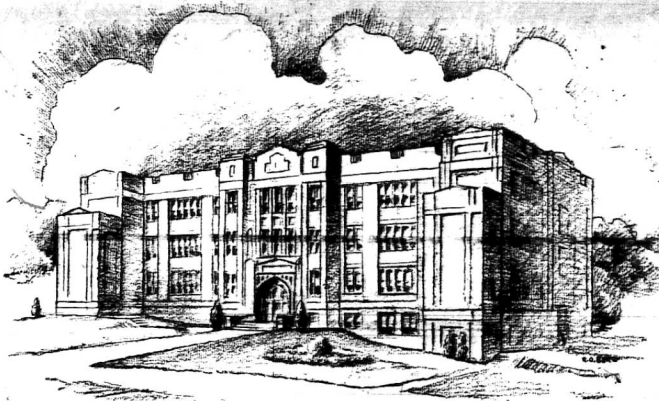
Our Hardware's Best; It Stands the Test. Let Us Forget: We are exclusive dealers in Morehead for General Electric refrigerators.

N. E. Kenard Hdw. Co.

Morehead State T



Dr. F. C. BUTTON, First President



Auditorium — Gymnasium

Training Kentuckians Better Serve K



REASONS WHY YOU SHOULD ATTEND MOREHEAD COLLEGE

- Geographically nearest
- Health conditions unsurpassed
- Unusually commanding plant
- Attractively furnished room and wholesome cuisine at remarkably low prices
- Highly trained faculty
- Exquisitely beautiful library of twenty thousand volumes
- Great emphasis upon the training school, not only in architecture, but in critic personnel and in practice teaching facilities
- Strong extra-curricular activities backed by stadium, tennis courts, gymnasium, auditorium, and natatorium
- Deep spiritual tone sounded through convocation and religious organization

WHAT MOREHEAD MEANS TO KY

A college preparing needed teachers to train the children of Kentucky citizens. Business men know that their children cannot become successful citizens unless they are well taught. There is a lack instead of a surplus of well trained teachers in the state.

A college offering liberal arts courses, which form the background for professional careers in law, medicine, engineering, and business for the children of Kentucky.

A college, one of whose main objectives is to train community leaders, that adults as well as child life in Kentucky communities may be more abundant.

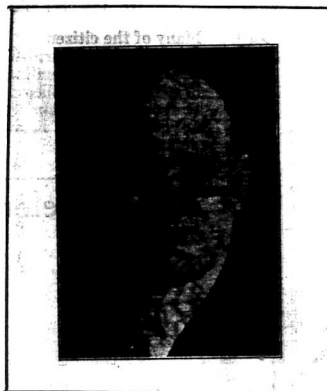
A college investing a portion of the state's wealth in such a way as to make Kentucky compare favorably with other states, thus arousing the pride of Kentucky's citizens.

A college embodying wealth producing machinery, turning out wealth producing individuals, thus adding to the material resources of

Kentucky
A
within
needs
nomic
ment
and gir
period,
by doin
A
Kentuck
the chil
conven

Teachers College

So They May Serve Kentuckians



HARVEY A. BABB, President



Fields Hall

MEANS TO CITIZENS OF KENTUCKY

Kentucky citizens. Education creates wealth.

A college providing opportunities for higher education at a cost within the reach of the man with very small means. Eastern Kentucky needs leaders. Only a small proportion of its boys and girls are economically able to attend college. The state can make no finer investment than to underwrite yearly the education of 1,200 Kentucky boys and girls.

A college adjusting itself to the reduced revenues of the present period, thus co-operating with taxpayers, yet doggedly "carrying on" by doing its full work.

A college ideally located geographically in the center of thirty Kentucky counties, with highways radiating in all directions, inviting the children of Kentucky citizens to come with the least possible inconvenience and acquire the "power that knowledge gives."

INFORMATION ON COURSES

The Morehead State Teachers College offers courses leading to the degree of A.B., B.S., A.B. in Education and B. S. in Education. Students may major in Biology, Chemistry, Education, English, French, History and Government, Mathematics, and Sociology and Economics. Students may enter in September, February, April, June, and July. Member Association of Colleges and Secondary Schools of the Southern States, American Association of Teachers Colleges, Kentucky Association of Colleges and Southern Intercollegiate Athletic Association

'Music for Everybody,' Watchword of Music Department At Morehead T. C.

Horton Traces Development of Department, Listing Growth Under Many Faculty Members

By I. H. HORTON,
Head of Music Department
"Music for Everybody," is the watchword of the Department of Music of Morehead State Teachers College. There is music in the grades and high school of Breckinridge Training school. Music is taught in many forms in the college, and a very successful effort is being made to carry the effect of this training into the home life of the student and into his teaching and community life after he has left Morehead. A further direction in which the department's activities reach is into the community of Morehead, as evidenced by the programs put on by the Morehead Civic Chorus, which, under the direction of Lewis H. Horton, head of the department of music, has sung several noted choral works including Handel's "Messiah" and Mendelssohn's "Hymn of Praise."

With the establishment of the Morehead Normal School in 1923 Miss Emma Shuder took the helm in the Department of Music and inaugurated most of the activities which time and increase in the teaching staff have permitted to flourish. Vocal and instrumental work was offered, and there were classes in Music Theory, History and Methods.

In 1929, Dale Haven took over the department as the Normal School became a Teachers College. Mr. Haven served for a year after which he accepted a position in the state of New York. He was succeeded by the present director in 1930.

The staff now consists of four instructors and a small group of student assistants who teach orchestral instruments under the direct supervision of these instructors.

Mr. Horton, in addition to directing the department, is Instructor of Voice, Theory, History and Appreciation and Public School Music. His undergraduate training was received at Oberlin College and Conservatory, Oberlin, Ohio, while most of his graduate work was done at Ohio State University. He is a composer, with many published choral compositions as well as works for piano and organ. Recently was published his text for high school choruses entitled, "The A Cappella Primer." He is director of the Stephen Foster Chorus, which sang at "A Century of Progress" Exposition in Chicago in 1934.

Marvin E. George, who came to Morehead in 1931, is a graduate of Bowling Green State Teachers

College, Bowling Green, Ohio, and has a graduate degree from Columbia University. Directing the bands and instructing in band instruments, Mr. George also teaches classes in Sight Singing and Ear Training and assists in the vocal instruction in the grades and high school.

Dorothy J. Riggs, graduate of Iowa State University and Eastman Conservatory of Music, has been instructor of Piano and Theory since 1932. She is accompanist for the Stephen Foster Chorus and the Morehead Civic Chorus.

Keith P. Davis, graduate of Iowa State University, and Columbia University, is instructor in violin and Public School Music. He is director of the college orchestra, the string orchestra and the string quartet. Like Mr. George and Mr. Horton, he also teaches in the grades and high school where these three instructors divide the vocal and general work between them.

The aims of Morehead's department of music are three: first, to assist pupils to a fine appreciation of the world's greatest music through playing, singing and listening, thus contributing to the cultural life of the student. Second, to give all students who are to teach in primary and secondary schools some training in the materials and methods of teaching music in primary and secondary schools. Finally, to contribute to the social and cultural life on the campus through the presentation of concerts and operettas, and incidental music in connection with various non-musical social events.

It is a source of great satisfaction and pleasure to the staff of the department of music of Morehead State Teachers College to observe the manifest extent to which these aims are embraced by graduates as they go out into the teaching field.

PREDICT WINNER ON GRID SCHEDULE FOR '36 SEASON

Predicting the strongest football team in the history of Morehead State Teachers College, Head Coach C. D. Downing has scheduled games for 1936 with six Southern Intercollegiate Athletic Association members and Tennessee Polytechnic Institute, Cookeville. He expects to add one other team to the schedule.

Subscribe for The Independent. Independent ads pay.

The - - Eagles Nest CAFE

Again lends its co-operation and best wishes to the Morehead State Teachers College.

We are fully aware that much of our progress and the advancement of this community depends on the Morehead State Teachers College. A trust has been placed in us by the men that placed this great institution here, and we do not intend to betray that faith.

The Eagles Nest CAFE

Wheeler's

INCORPORATED
Kentucky's Finest Furniture Store

Lexington, Kentucky

Join with the Citizens of Morehead and Rowan County in extending congratulations and

BEST WISHES TO Morehead College And — President Babb

THE NEW PRESIDENT OF MOREHEAD STATE TEACHERS COLLEGE

Many of the citizens of Morehead and Rowan County are known to Wheeler's . . . Many of their homes are furnished with Wheeler's Quality Furniture . . . So we are pleased to join with our friends in extending congratulations and best wishes to the New President of Morehead State Teachers College.

To those of you whom we have yet to make an acquaintance we extend a personal invitation to visit Wheeler's, Kentucky's Finest Furniture Store at your earliest convenience and get acquainted.

Let Wheeler's Make Your Home a Charming



Vacation Land!



Stay-at-homes this summer will have no need for tears or regrets when they see our complete stock of cool and comfortable furniture. The new metal pieces are exceptionally interesting. They are equally attractive in the sunroom or on the porch or terrace, and used by many in the garden. Metal furniture is made in a grand variety, including divans, gliders and tables. The color combinations this season are unusually inviting.

COLORFUL UMBRELLA SETS

You'll find a larger selection of umbrella sets at Wheeler's... almost any color or color combination you desire is included.



Seven-foot umbrella, choice of bright color combinations **9.75**

Large round metal folding umbrella tables. Choice of colors **8.50**

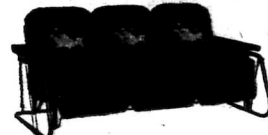
Chairs to match in metal and wood, slat back and seats **6.95**

ADJUSTABLE METAL CHAIRS **\$8.50**

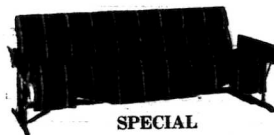


Has three-way adjustment attachment. Padded seat and back. Choice of designs and colors, as illustrated.

THE NEW GLIDERS ARE MORE COMFORTABLE



Large full size gliders, coil springs and ball-bearing construction, six loose cushions with two matching pillow arm rests. Attractive polo design, as illustrated. Choice of colors. **37.50**



Double roll-back glider sturdily constructed—full size. A very fortunate purchase enables us to offer you this handsome glider at this unusual low price. Choice of colors. **12.50**



Summer Rugs

Three distinct and different types of summer rugs to choose from. Rugs for every purpose. There are extra heavy fiber rugs from China. Reversible: plaid rugs, also imported heavy quality oval rush rugs. Choice of several different color combinations and designs.

Chinese Chin Rugs	Oval Rush Rugs	Reversible Rugs
4x10 4.75	22x54 2.85	36x63 3.25
6x9 7.85	3x6 4.50	54x90 5.95
	14.50 6x9	9.75

GLIDER CHAIRS

The New glider chair, comfortable upholstered seat and back. Choice of solid colors, designs or stripes, as illustrated.

\$12.50



METAL AND CANVAS CHAIRS



Comfortable metal chairs with canvas seat and back, with attractive polo design or stripes. Choice of colors.

\$5.50

ATTENTION! ROWAN COUNTY VETERANS

WHEELER'S DELIVER WITHIN 100 MILES OF LEXINGTON AT NO ADDITIONAL COST

WHEELER'S INVITE YOU TO THE STORE, BUY THE FURNITURE YOU NEED NOW. WE WILL DELIVER IT IMMEDIATELY AND YOU PAY US WHEN YOU GET YOUR BONDS.

YOUR CREDIT IS ALWAYS GOOD AT WHEELER'S.

Directs Sports



COACH G. D. DOWNING
George Dewey Downing who is head basketball and football coach and director of athletics at Morehead, has promised the best gridiron season in the history of the school next fall. With a large number of 1935 varsity and freshman players expected to return next fall, an aggregation combining speed and weight is forecast. Coach Downing has been at Morehead for the past 12 years. He was formerly mentor of the Lexington High School Blue Devils.

C. O. Peratt Given Credit In Growth Of History Section

Dr. A. W. Welter Discusses Plans For Study In Training Teachers

By Dr. A. Y. LLOYD, Head of Department of History and Political Science

The most important function of the Department of History and Political Science is the preparation of teachers who will train the future citizens of this Commonwealth and of the United States. This training must, of necessity, be two-fold. First, the potential teachers, as college students, must be taught the ideals of American Democracy, the historical events that have developed and determined the national policies of the United States, and the fundamental principles of American government. Second, these potential teachers must be trained in such a manner as to enable them to convey to their students such historical knowledge and governmental principles needed for active, intelligent, constructive citizenship. At present, when radical "isms" are being substituted in other countries for older forms of government, it is imperative that American citizens and particularly teachers be trained to understand various governmental forms, functions, and responsibilities. Especially should they be cognizant of the principles of American democracy and the duties and responsibilities of the electorate. Such training forms the central theme of the courses in History and Political Science offered at Morehead State Teachers College. Much credit is due to Prof. C. O. Peratt for the early organization and development of the Department. Gradually courses were added until students could major in either History or a combination of History and Government.

Under the direction of Dr. Arthur Y. Lloyd, who came from Vanderbilt University to Morehead in 1931 and was promoted to head of the department in 1934, many new courses have been added and the services to students

Eagles Varsity Basketball Team Achieves Notable Record During 1934-35 Season; Almost Win Kentucky Championship



Morehead's 1934-35 basketball team, above, lost by 12 to 4 to the Southern Intercollegiate Athletic Association champions, Western State Teachers College, in the semi-final round of the Kentucky Intercollegiate Athletic Conference tournament at Bowling Green last year in February. Front row: William Ryan, Mayaville; J. B. Parsley, Hazel Green; Fred Caudill, Morehead; Luster Oxley, Ashland; Walter Roschi, Mayville, and Wade Hall, McDowell. Back row: Assistant Coach Paul Combs, Hazard; John Shuey, Delphi, Ind.; Roy Adams, Olive Hill; Head Coach G. D. Downing; John Rosson, Columbia; Roy Caudill, Morehead, and Willard Johnson, Carr Creek.

greatly enlarged. At present students may secure major work in the fields of either history or political science or in a combination course. In addition to teachers, many pre-legal students avail themselves of the opportunities in the political science courses. Prospective history teachers are given special professional preparation in the Methods of Teaching Social Science. Close cooperation is carried on with the Training School with demonstration lessons, observations, etc.

In addition to the courses in residence, the department offers a number of courses through the Extension Department either by correspondence or Study Center groups. All such courses are under the direct supervision of regular members of the department. This year Mr. Peratt taught an

extension course at Russell and Dr. Lloyd conducted two courses at Vanceburg.

At the present time the personnel of the department is as follows: Dr. A. Y. Lloyd, head of the department; Mr. C. O. Peratt, professor of history; Dr. J. B. Holtzclaw, instructor of political science; Mr. E. K. Senff, instructor of history.

Prospects For Court Team Good For Year

Morehead State Teachers College is almost certain to be represented by a winning basketball team during the season of 1936-37, if the wealth of varsity and freshman material may be considered an indication, according to

Coach G. D. Downing. Every Southern Intercollegiate Athletic Association team in Kentucky may be played, next year, the Coach stated, but games with Murray and Western, heretofore the strongest aggregations in the Kentucky Intercollegiate Athletic Conference, are contingent upon the Eagles' road schedule.

Western has eliminated Morehead in the semi-finals of the K.I.A.C. tournament for the last three years, and local fans are eager to see the Eagles play the Hilltoppers in a regular season game. John Shuey, J. B. Parsley and Morehead all-K.I.A.C. center Lawrence Carter will form the nucleus of the 1936 five, but they are expected to have been competition from last year's freshman, whom the University of

First Swimming Team to Have Meet

Morehead's first swimming team is scheduled to go into action Monday against the University of Kentucky in the Y.M.C.A. pool at Lexington, according to Prof. Earl King Senff, who has been conditioning the squad. Charles Morris and Casper Borst, in preliminary practices have demonstrated marked diving and racing ability. Other members of the squad are Ed Bell, Sam Bradley, Charles Hall, Howard Eckles, John Francis, Joe Jackson, Joe Marshall, Ed Farley and Alton Payne.

Dual meets with Berea, Western, Eastern and Louisville are under advisement, and if satisfactory dates can be procured, the Eagle swimmers will probably be seen in action here in the Senff natatorium against them. Nine men will engage in each meet, under the regulations governing the teams.

TRAINING SCHOOL DIRECTOR



Warren C. Cappin, who is director of the Breckinridge Training School, returned to Morehead last fall from a leave of absence at the University of Indiana, where he had gone to complete study for the doctorate.

Kentucky Kittens were able to beat twice only by narrow margins. Games have been tentatively arranged with Transylvania, Georgetown, Eastern, Union, Berea, Louisville, Centre, and Wesleyan.

Eagles Football Review Discloses Record As 'Fair'

Team Won 21, Lost 23, Tied 2. Since 1929; Last 4 Years Most Disastrous

1929 SQUAD BOASTED BEST IN KENTUCKY

Morehead State Teachers College's football teams have played 46 games since 1929, losing 23, winning 21 and holding the opponents to ties on two occasions. However, only four out of 18 games played in the last three years have resulted in victories.

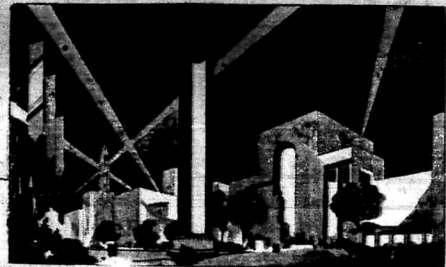
Since Morehead has been a member of the Southern Intercollegiate Athletic Association, only one member has been defeated—East Tennessee Teachers in the final game of 1934 by the score of 13 to 12.

In 1934, Morehead's Eagles scored a surprise victory over East Tennessee in the final game of the season by the score of 13 to 12. Losses were registered against Centre 47 to 0, Union 15 to 6, Transylvania 12 to 2 and Eastern 7 to 0. Rio Grande was defeated 13 to 0 in the first game of the season.

Alfred Holbrook lost to the Eagles 7 to 0 in an early-season game; it was the only Morehead victory for 1935. Games lost were with Rio Grande 7 to 6, Georgetown 19 to 0, Transylvania 26 to 0, Union 31 to 0, Eastern 53 to 0 and Louisville 20 to 0.

Plumbing, Heating, Wiring
WORK GUARANTEED
Phone 274
Plumbing and Electric Shop
HALLUS CATRON, Mgr.

SUPREME QUALITY CHICKS
Day old or started. From U.S. Approved and Pullorum tested flocks. Leading breeds, production bred. Bargains in started chicks called for a hatchery for limited time. Write for prices and particulars.
East Water St., near Postoffice
FLEMINGSBURG HATCHERY
East Water St., near Postoffice
Flemingsburg, Ky.

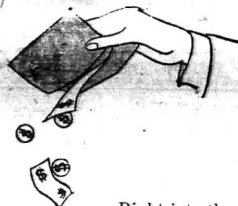


PROGRESS

Founded on sound principles of fair play - Good business practice and energy and ambition to achieve

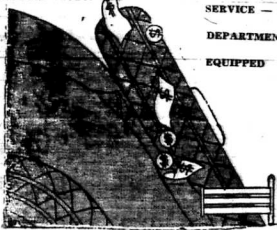
The Morehead State Teachers College has accomplished Progress. Tuesday it will take another progressive step with the inauguration of President Babb. Under his regime, we hope for them continued Progress. . . . We believe, that we, likewise, have progressed, until today the PEOPLES BANK OF MOREHEAD is a sound, forward-thinking institution, serving Rowan County, with combined assets of over three-quarters of a million dollars. For over 29 years this bank has served Rowan County.

PEOPLES BANK OF MOREHEAD



THATS WHERE YOUR MONEY GOES . . .

Right into the gas tank . . . and how fast it DOES go when you buy inferior or cheap gasoline! Keep a goodly percentage of your gas money right in your pocketbook by buying Pepper Gas at Hinton's Service Station. You'll find it goes further, starts easier and costs less in the long run.



A PERFECT STATION FOR COMPLETE AUTO SERVICE - REPAIR DEPARTMENT FULLY EQUIPPED

IMPS at WORK ON YOUR TIRES



The wear and tear of daily travel is gradually taking the safety out of your tires. Before something really disastrous happens insure yourself and family with new treaded tires, the kind that take hold and wear long. Guaranteed. See these Seiberling tires at Hinton's. Ask the man that uses them.

Congratulations to President Babb and best wishes to Morehead College

Morehead Auto Sales

AUTHORIZED FORD DEALER

On U.S. 60 Telephone 234 WOODY HINTON, Mgr.

ENERGY



They'll Need Lots of It
This Summer

Summer, with its gay vacation days, will be here. Away from school, romping and playing all day, your children are going to need plenty of energy to keep them going. The recipe for this energy is simple: just see that they get plenty of good, fresh milk. They'll be happier and healthier this Summer than ever before.

Spring Grove Dairy

CONGRATULATES PRESIDENT BABB

May Day Fete In Connection With Program, Planned

Physical Education Department For Women Make Arrangements

In connection with the inauguration of President H. A. Babb, the Physical Education Department for Women, under the direction of Ernestine Troemel, has made arrangements to present the college's annual May Day program at 2 o'clock Tuesday afternoon. The pageant will be held on the library terrace.

The event this year is designed to pay tribute to the first president of Morehead State Teachers College, Dr. Frank C. Button, who died in 1933 after serving as chief executive since 1924.

Accompanying the performers will be the college band under the direction of Marvin E. George. Numbers in the repertoire are Victor Herbert's "American Fantasy," Grieg's "Norwegian Dance," Nos. 1 and 2; Brahms' "Hungarian Dance," "Lullaby," "Dumpty," "The Swan," "The Swan," and selections from the Wagnerian operas.

Members of the May Day committee are Ernestine Troemel, Lucille Caudill, Louise Caudill, Neville Finzel, G. D. Downing and W. D. Scroggins.

Included in the cast are members of the administration, faculty, college student body and Breckinridge Training School. Lucille Caudill, who is a college instructor in speech, has been selected as relator. Members of the cast are Kathleen Downing, king; Emma Jane Graves, queen; fourth grade of the training school, may pole dance; Women's Athletic Association, Virginia Reel, and the physical education department classes, exhibitors.

Music department students composing the band are Joe Marshall, Leo Oppenheimer, Roger Caudill, J. Warren Blair and Calvin Crosthwaite, cornets; Thos. Paul, Marian L. Oppenheimer, Virginia Harpham, Christine Thaw, Eloise Redwine, Alene Huff, Evelyn Dale and Katherine Blair, clarinets; Casper Borst and Leo Rachford, flutes; Kathleen Shinkle, oboe; Evelyn Harpham, bassoon; Edward Eckles, Creed Grumbler, Virginia Caudill and Ione Bays, French horns; Thomas Keifer, baritone; Keith Davis and Oscar

Basketball Captain



WILLIAM RYAN

William "Tommy" Ryan has filed application for graduation in the June class after having served as basketball captain during the last year and a member of the varsity and freshman basketball and football teams for four seasons. He is a native of Mayville, Ky.

ACADEMIC PROCESSION FORMS TUESDAY AT 9:45

Formation of the academic procession of the inauguration has been announced for 9:45 o'clock Tuesday morning. Members of the speaking roster will lead, followed by the members of the college faculty. Members of the senior class, dressed in the regulation caps and gowns, are expected to bring up the rear.

Independent ads pay. Subscribe for The Independent. Palmer, basses, and Ralph Schwartz and Orville Redwine, drums.

Women's Athletic Group Promotes Feminine Athletics at Morehead School

Miss Ernestine Troemel Is Faculty Sponsor of W. A. A.; Marie Thomas Named President, Stellarsae Martin, Vice-President Of Club

The Morehead Women's Athletic Association, better known as W.A.A., was inaugurated with a character membership of 18. The purpose of the organization is to establish and promote a wholesome interest and attitude in and toward athletics for women. Each year W.A.A. sponsors an intramural basketball tournament, an intra-mural baseball tournament, as well as a number of other athletic events.

During the year 1934-35 the Morehead Women's Athletic Association was represented at the state-wide meeting which was held at the University of Kentucky.

Morehead Normal Founded In 1887

(Continued from page 1, section 2) ter them, and the church of today holds them in reverent and sacred memory. The remains of Dr. F. C. Button, the last president of the Morehead Normal School, and the first president of the Morehead State Teachers College, rests in the beautiful terraced cemetery east of the city and the college campus, and his monument is an imperishable reminder of the value of the church and the school in the economy of our civilization.

The founding of the Morehead Normal School, the acquisition of the more than seventy acre campus, the erection of the various college buildings, the equipment and maintenance of the college was all made possible by gifts from General William T. Withers of Lexington, Mr. and Mrs. Robert Hodson of Oquawka, Illinois, and other individuals and organizations of the Christian Church. For thirteen years the Morehead Normal School was supported mainly by the Kentucky Christian Missionary Society. On July 21, 1900, the Ken-

Thomas, president, Stellarsae Martin, vice president, and Esther Blackburn, secretary and treasurer. The membership during this year has averaged about 20.

Each year this organization sponsors a short camping trip, roller skating parties, square dance programs, and swimming activities.

During the year 1934-35 the Morehead Women's Athletic Association was represented at the state-wide meeting which was held at the University of Kentucky.

school to the Christian Woman's Board of Missions, familiarly known as "The C.W.B.M.," a national organization of the women of the Christian church or Disciples. Under the management of the Christian Woman's Board of Missions the Morehead Normal School reached its greatest proportions. Hundreds of students gathered here and this section of the state was supplied with teachers from its halls. Thus through the activities of the Christian Church, individuals of the church and organizations of the church, was the way paved for the coming of the present Morehead State Teachers College.

The Morehead State Teachers College came to be a reality in 1922. It located on the old Morehead Normal School campus which was a gift from the Christian church and its organizations, of which it may be said that a more beautiful spot cannot be found. This beautiful campus adjoined by equally beautiful buildings is now the scene of a great college. And, the local Christian church, as a representative of the Brotherhood and organizations of the Christian church nationally and otherwise, takes this occasion to welcome the new president, Harvey A. Babb, not only as president of the Morehead State Teachers College, but

More Than \$691,000 Is Expended Here

(Continued from page 1, section 2) cited, is repaid to have cost \$18,000.

Contracts for the two buildings have been awarded to the Street Construction Company, Louisville; Whitehurst Plumbing Company, Ashland; Link Electric Company, Louisville, and Montgomery-Ward Company, Joseph & Joseph, Louisville architects, have designed the buildings.

Payment of 50 per cent of the \$691,000 with interest will be made over a period of 20 years by the school. Forty-five per cent of the government expenditure represents a grant.

Chorus, Orchestra Furnishes Music

(Continued from page 1, section 2)

Virginia Harpham, concert master; William Toran and Evelyn Dale, first violin; George Rachford and Alton Payne, second violin; Christine Thaw, viola; Evelyn Harpham, Marian Oppenheimer and Amy Irene Moore, cello; Leo Oppenheimer, string bass; Casper Borst, flute; Kathleen Shinkle, oboe; Thos. Paul and Marvin George, clarinets; Howard Eckles and Creed Grumbler, French horns; Joe Marshall and Thos. Keifer, cornets; Paul Young, trombone, and Ralph Shwartz, tympany.

as the official recipient of the inheritance of the past, to the college and the city and community, and extends to him the heartiest felicitations as a local church.

The church of today, true to its inheritance, is interested in higher education, and the faculty of the Morehead State Teachers College, and the student body have a hearty welcome to all services. The church feels its obligation especially to render assistance and help to students of the college that are members of or who prefer the Christian church. The church, therefore, invites students and faculty to feel free to partake of its ministrations whenever and wherever needed.

Independent ads pay.

The Old-Fashioned Friendly Attitude Modernized



Here you and all members of your family will find that type of service which is characterized chiefly by personal interest and attention -- service that brings you back day after day because of a feeling of reliability and dependability -- and equally or more important -- service that definitely assures you of value. Watch the advertisements and patronize this institution for more satisfying service in buying groceries.

QUALITY FOODS at the

--- RIGHT PRICE ---
Cut-Rate Grocery

PRES. BABB
CONGRATS

Ah-h-h- Here's Flavor In Good Beer

RED TOP - Made Famous For Its Flavor



Beer—the cooling, healthful family drink that makes the hottest days a paradise for thousands. Keep it in your home . . . in your office . . . see that your family gets its share wherever they go. Order West Virginia Special, and you are ordering a beer that they will all enjoy. It's Good—It's Got to be GOOD Because that is the way it is made.

But lasting, lingering, pleasant flavor is only half of this better made, expert tasted beer. The other half is cooling, health giving nourishment and liquid satisfaction for hot, stuffy summer days. Try a bottle of Red Top Beer and you'll order a case so the whole family can enjoy its appetizing taste and effects.

NEXT TIME SAY "RED TOP" AND BE ASSURED THAT YOU ARE GETTING THE BEST

The manager of this company has seen Morehead College Grow from nothing to the great institution it is today. We are always ready to help its progress in any manner possible. The Best of Luck President Babb.

MOREHEAD DISTRIBUTING COMPANY
Distributors Red Top and W. Va. Special Beers
M. F. MOORE, Mgr.

The Morehead Independent

VOLUME III

MOREHEAD, KENTUCKY, THURSDAY MORNING, APRIL 30, 1936

NUMBER 18

Girls Athletics Are As Old As School At Morehead T. C.

Misses Ernestine Troemel, Louise Candill Sketch Growth of Sports

OFFER VARIOUS CLASSES

By ERNESTINE TROEMEL, Head of Department, and LOUISE CAUDILL

Physical education for women at Morehead State Teachers College, according to authentic sources, is as old as the college and had its beginning with Evelyn Royalty who was also in charge of "Expression" at that time. Physical Education was considered a "drill" subject, along with drawing, music, spelling, and penmanship and one-quarter of a credit on a secondary level was awarded for four hours a week. This work consisted of a combination of plays and games and calisthenics.

The following year, 1924, Lucy Wilson (now Mrs. Clark Lane) of the University of Kentucky took over the work of teaching some courses in other departments. Miss Wilson's courses in this field included theory of health and physical education, activity classes, mostly sports and "games" and playground work and calisthenics, and a recreational program which emphasized mass participation. Sports included baseball, basketball, tennis, and soccer. Mrs. Lane relates that the recreational phase of the work was the most popular and involved the entire student body in such activities as the "Virginia Reel," square dancing and low organized games which were indulged in on the campus green.

Two and three hours could be earned in theory of health and in theory of physical education, respectively, with no credit (college).

To Deliver Oath of Office to Pres. Babb



JUDGE W. H. REES

Judge William Henry Rees above, who has been chief justice of the Kentucky Court of Appeals since 1928, will administer the oath of office to President Harvey A. Babb at the inaugural ceremonies Tuesday morning.

The Judge, who is 54, is a native of Maysville, where he is vice president of the National Bank and its State Trust Company. He was awarded the bachelor of science degree from Kentucky Wesleyan, in 1901 and the LL. D. Judge Rees attended Vanderbilt University and the University of Virginia. Since becoming a member of the Appellate court, he has resided in Frankfort.

for activity courses. Some of the highlights of Miss Wilson's administration are recollections of girls playing soccer in long black skirts (since the girls were considered "wild" enough without expressing themselves in immodest blonson costumes). A hot day would see a girl progressing toward the general field of economics.

Dr. Terrell Writes, Discusses Courses In His Department

Department Economics, Sociology Became Separate From Social Science

DEPRESSION INCREASES INTEREST IN CLASSES

Prof. Neville Finzel Instructor In M. T. College Since Fall of 1933

By Dr. R. F. TERRELL, Head of the Department of Economics and Sociology

The Department of Economics and Sociology became separate from the Social Sciences in the fall of 1930. This step was necessary in order to establish a minimum number of departments looking toward the standardization of the teachers college at Morehead. The department was headed by R. F. Terrell who had been associated with the department of the Social Sciences previously. At first Henry Coates taught some courses in the department. In 1931 Neville Finzel was appointed as a regular member of the staff. During the school year of 1932-1934 Mr. Finzel was on leave of absence studying at the University of Virginia during which time Mr. Coates was again associated with the department.

During the first years of the existence of this department the different members of the staff taught about as many courses in economics as in sociology. But in recent years Mr. Terrell has taught for the most part the courses offered in economics. This makes it possible for the members of the staff to do more specialized work in one particular field.

The courses in economics have been selected for the purpose of giving the students an introductory into the general field of economics.

Morehead Normal School

Second Term Opens the First Monday in January, 1896

Terms:

Board in Hodson Hall, per week	\$2.00
Tuition in Primary Department, per month	1.00
Tuition in Middle Grades, per month, four weeks	1.50
Tuition in Advanced Grades, per month, 4 weeks	2.00
Instrumental Music, per week, five lessons	1.00

(signed) F. C. Button, President

(From a Morehead Newspaper of the Nineties)

It is an effort to meet the growing demand of students in after life in an effort to adjust themselves to economic situations. Many students pursue graduate work after graduation in law, medicine, etc., and these must present a minimum of credits in economics; these courses fulfill such requirements. Courses in economics are offered as follows: General Economics, 6 hours; Agricultural Economics, 3 hours; Economic History of Europe, 3 hours; Economic History of the U. S., 3 hours; Labor Problems, 3 hours; Marketing, 3 hours; Public Finance, 3 hours; Money and Banking, 3 hours; Investments, 3 hours. More and more are people in general being aroused to the importance of the study of sociology. The depression and its attendant adjustments have brought the attention of students everywhere to the necessity of studying social adjustments have brought to store normally. The physical sciences have been emphasized al-

most to the neglect of social sciences. At least the elements of the social sciences are being emphasized in this department. We are trying to show the worth of study of the courses offered. The names of the following courses which are being presented in this particular field: Rural Sociology, 3 hours; Introductory Courses in Sociology, 8 hours; Child Welfare, 3 hours; Criminology, 3 hours; Immigration, 3 hours.

The general cultural values of the courses in the department are not lost sight of in the presentation of the subject matter. The subject matter is correlated with the various fields of related subjects. The fact that the students have recognized the importance of the topics taught in economic and sociology attested to by the number of students enrolling in the department. This is a vital field of study, and the methods are used in such a way as to vitalize the subject matter.

Scheduled To Appear At Final Inaugural



DR. HENRY N. SHERWOOD

Dr. Henry Noble Sherwood above, who has been president of Georgetown (Ky.) College since 1933, has consented to pronounce the invocation at President Babb's inauguration Tuesday.

The Georgetown educator has instructed in history in Cincinnati College of Finance, Central Normal College, and the Universities of Indiana, Colorado and Louisville. From 1924 to 1927, he was superintendent of public instruction of Indiana.

Degrees awarded were bachelor of arts, Indiana University; master of arts, Harvard, and the doctorate, Indiana.

BETRAYING AMERICA

No cigarette is imported into Nicaragua. Cigarettes which are said to be a fair imitation of the popular American brands, are manufactured locally, and sold at fair prices ranging from 10 to 20 centavos per package of 20 cigarettes.

Morehead College Gives Five Kinds Of Certificates

Four Types of Degrees Also Offered By State Institution

REQUIREMENTS GIVEN

The Morehead State Teachers College, organized primarily for teacher preparation, offers four kinds of degrees and five teachers' certificates.

The degree of bachelor of arts may be obtained by securing English, 12 hours; social sciences, 12, science 12, foreign language 12 and mathematics 7. In addition, the state regulation requiring two majors or one major and two first minors must be met.

Requirements for the bachelor of science degree are identical with those of the arts degree, except that the major work must be in the field of science.

Education degrees are provided for prospective teachers in the arts and sciences. Eighteen specified hours in education and requirements of the foreign language to the arts curriculum.

Majors may be obtained in biology, chemistry, education, English, French, history and government, mathematics, and sociology and economics.

First and second minors are available in almost every other field offered at the College.

The provisional elementary certificate, valid for three years, may be secured upon earning 64 hours, including general arts and elementary education requirements.

The standard elementary certificate is available when the student has been awarded the bachelor of arts degree in education with the professional courses be-

(Continued on Page 8, Section 2)

The City Officials Of Morehead

Extend Congratulations to President Babb

AND

A Hearty and Sincere Welcome To Visitors

at the Inauguration :: :: ::

It has been our policy always, to co-operate in any manner possible, with the Administration and faculty to achieve.....

A Greater Morehead State Teachers College

HARLAN BLAIR ----- Mayor

MEMBERS CITY COUNCIL

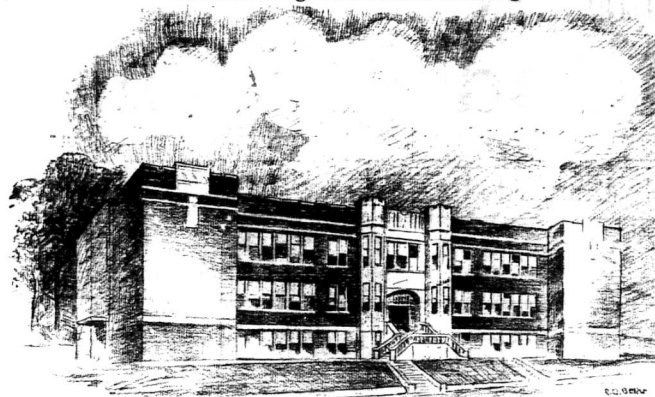
ROBERT S. BISHOP -- WARREN C. LAPPIN -- W. H. RICE -- N. E. KENNARD -- S. P. CAUDILL -- J. B. CALVERT

LEE STEWART ----- Judge City Court
ROY E. HOLBROOK, City Clerk
J. H. ADAMS, Chief of Police

LESTER HOGGE, ----- City Attorney
PRUDIE NICKELL, City Treasurer
N. L. WELLS, Water Commissioner

ED HALL, Chief Fire Department

Morehead College Administration Building



Offices of the administrators, and faculty and class robes are provided for in the Administration building which was erected in 1924. It was the first in the series of seven structures of the University which were designed by T. U. G. G. Gothic design. Plans are now being made to transfer many of the departments in the building to the new science hall, now under construction on the western border of the campus. In the future its primary function will be to house the administrative corps of the College.

Hudson Says Art Department Dates Back To Year 1925

Mrs. Naomi Claypool, Present Head, Was First Instructor at School

NEW TEACHER ADDED TO STAFF IN SPRING 1931

Curriculum and Offerings For Students Has Been Rapidly Increased With Change

By RALPH M. HUDSON, The Art Department

The Art Department of the Morehead State Teachers College dates back to 1925 when Mrs. Naomi Claypool was appointed instructor in art and head of the department. The art department was quartered in the administration building at that time.

From a beginning of a few normal school courses in public school art, Mrs. Claypool had developed the department so that a variety of courses were offered by the

time it was moved to its present quarters in the first floor of the library building. Since its installation in the library the art department has maintained a varied and colorful exhibit in the display cases in the lobby of the library. Mrs. Claypool received her B.A. degree from the University of Kentucky in 1930 and the following year was given a leave of absence to attend Teachers College of Columbia University where she received the Master of Arts degree. During that summer Mrs. Claypool taught a class in textile appreciation and assisted Miss Belle Boas at Teachers College.

Ralph M. Hudson came to Morehead in the fall of 1931 to fill the vacancy created by Mrs. Claypool's leave of absence. Mr. Hudson had attended Ohio State University where he received the B.A., B.Sc. in Ed., and M.A. degrees.

Mrs. Claypool resumed her duties in the fall of 1932. During the fall Mr. Hudson began work on the doctor's degree at Ohio State University, returning to Morehead in the spring.

Mrs. Claypool and Mr. Hudson have taken a prominent part in the field of art education in the state and in Eastern Kentucky. Both have served on state-wide art curriculum committees.

Through their efforts an art section was established at the Eastern Kentucky Education Association convention.

During the summer of 1933, Mr. Hudson was given a leave of absence which he traveled and studied in Europe. Since the art department was established its curriculum offerings have been enlarged and extended until a varied and well-rounded program of courses is now offered. Courses in drawing, design, oil and water color painting, stage design, costume design, art education, and art history and appreciation are included in the department offerings.

The art department has played an important part in the life of the campus and its extra-curricular activities. The Beaux Arts Club, an organization of students interested in art, founded in 1935, has become one of the most active organizations on the campus.

Through the efforts of the art department the lot of many children in eastern Kentucky who have been deprived of the benefits of art training is now being improved, because the teachers now attending the Morehead State Teachers College are receiving better training in art education.

Home Economics at Morehead Started On August 29, 1934

Expect to Offer Training For Students in Smith-Hughes Schools

MRS. M. W. HALL, HEAD

By Mrs. Myrtis W. Hall, Head of the Department. At a meeting of the Board of Regents of Morehead State Normal School on August 29, 1934, President F. C. Button was authorized to establish and to equip the department of home economics.

The first classes were taught during the fall semester of 1934 by Miss Ruth Vansant. Courses were offered in both the college and in the high school. In the college only two courses were given, one in elementary food preparation and one in elementary clothing construction. The department was housed first in the basement of Burgess Hall, but during the spring semester of 1936 quarters were provided for the department in the new administration building.

In February, 1937, Miss Vansant resigned and was succeeded by Miss Carolyn Turner. During 1938 the college was organized into departments and home economics

was made a sub-department in the science department. In the summer of 1939 the home economics department was divided into college and high school divisions and Mrs. Chas. E. Brown was appointed to teach in the high school. Home economics discontinued in the high school after the summer school of 1929. At this time 11 courses were given in the college. Miss Virginia Routt directed the home economics work in the summer school of 1931, and was succeeded in September by Mrs. Myrtis W. Hall, the present director. In 1932 the home economics department withdrew from the science department and became a special department. Having outgrown the space provided in the administration building, the department moved in September, 1933, to the Training School where it now occupies modern, well equipped laboratories.

The home economics department today offers a variety of courses in nutrition and food preparation, in textiles and clothing, in household equipment and administration, in child care and training, and in home economics education. These courses are planned to meet the needs of students who will teach general home economics, and those students who desire information regarding principles of right living and of home making. In the near future it is expected that training will be offered for those students who wish to teach home economics in Smith-Hughes schools.

Transportation In County System Has Expanded Rapidly

The Rowan County School System, of which Roy E. Corneette is superintendent, having been elected in 1934, is composed of 48 rural and four consolidated schools.

In conjunction with the county board, Superintendent Corneette has improved transportation facilities by adding four new bus routes bringing the total to seven. Every building in the system has undergone a general repairing, and in the Holden school in cooperation with the Parent-Teachers Association a new water system has been installed this spring. New schools have been built at Perkins and Slab Camp, and additions have been made at Clark and Sea's Branch.

The board has appropriated a standing library fund for the four high schools in Rowan County. Seven hundred and fifty supplementary books have been secured by the county office for distribution among the rural schools. It is designed primarily to meet the requirements of the lower grades, but in time it is expected that the institution will be replete with volumes of benefit to the entire system.

Business courses, typing, business English, arithmetic, and shorthand have been added to the high school curriculum. Manual training facilities have been installed in the Morehead High school, the largest unit in the entire system. Installation of a domestic science department in the city high school is under advisement by the school board. Announcement was made recently of the purchase of a tract of land, approximately one acre in extent, at Elizabethtown for the purpose of enlarging play ground facilities.

The Rowan County School Board, composed of I. E. Peirce, chairman; W. W. Hall, J. L. Boggs, Sam C. Caudill, and W. H. Broadley, has been able to improve the system and pay 50 cents on the dollar on the outstanding county warrants, issued in 1929 and 1930.

16 YEARS Of Progress

16 YEARS AGO

the Battson Drug Company was established in Morehead. They represent 16 years of Progress—made possible in a large measure by the Morehead State Teachers College.

We believe we have established an enviable record of service and the distribution of Quality Products

Battson's Drug Co.

Always ready to cooperate with Morehead College, its faculty and students.



Science has discovered that cod liver oil administered directly on cuts, burns, scalds, bruises and minor skin irritations has remarkable healing power. Codolene, the new cod liver oil ointment soothes insanity, relieves pain and has proved itself highly beneficial in preventing infection. Codolene will not irritate the most sensitive skin. It's easy and pleasant to use. The coupon below is worth 10c on a large 50c tube. Fill it out—clip it and take it to your drugist.

CLIP THIS COUPON **SAVE 10c**

Cut this coupon... save 10c on a large 50c tube at your drugist's.

Name _____
Address _____
City _____ State _____
Drugist's Name _____

Fare Thee Well, Annabelle Until You Serve



Mary-Jane Bread

You can hardly expect distressed husbands to do otherwise than rebel at soggy, tasteless bread at mealtime — Serve him fluffy, flavorsome MARY JANE Bread and never worry about his appetite or state of affections. . . . It's the finest bread you can buy -- Fresh Every Day.

A PICTURE OF HEALTH IN EVERY SLICE

The pure wholesome goodness of MARY-JANE Bread—its tasty, delightful flavor—makes it a welcome addition to every meal. Just the thing for in-between snacks! Because it's baked so carefully, of the finest quality ingredients obtainable, it's extra good --- and good for you! There's a picture of health in every slice.



A Morehead Product That Matches Any Bread Made

The Midland Bakery

One of Kentucky's Finest Bake Shops

Morehead, Ky.

Morehead's Two Leading--- Barber Shops

CONGRATULATE

President Harvey A. Babb
AND HOPE FOR HIM A BOUNTIFUL SUCCESS
AND

COMMEND THE MOREHEAD STATE TEACHERS
COLLEGE ON ITS 12 YEARS OF REMARKABLE
GROWTH UNMATCHED BY ANY INSTITUTION
OF HIGHER LEARNING IN KENTUCKY.

To the students—the faculty—and the student
body we extend our appreciation for your past
patronage and hope you will continue to let us
serve you.

Sanitary Barber Shop
Cozy Bldg., Main St.--Hobert Johnson, Mgr.

Martins Barber Shop
Next door to post office--Orville Martin, Mgr.

Appointed By Gov.
On Morehead Board



HON. C. BENTLEY BENNETT

Hon. C. Bentley Bennett was
named to the Board of Regents
in February by Gov. A. B. Chan-
dler to succeed Judge D. B. Cau-
dill, Morehead. He is a native of
Greensburg.

**1936 Raconteur Is
Ready For Printer**

Reduction Made This Year In
Cost of M. T. College
Yearbook

By ROBERT ALFREY,
Editor The Raconteur.
Morehead State Teachers Col-
lege each year sponsors a year-
book—the Raconteur—for the stu-
dent body. The 1936 edition of
the annual is ready to be sent to
the printers, according to Robert
Alfrey, editor.

Jesse T. Mays, head of the de-
partment of industrial arts, is the
financial manager of the student
publication.

Members of the staff are Mr.
Alfrey, editor; Harold K. Collings,
business manager; Sherman Hen-
derson, photograph editor; J. P.
Nickell, organization editor; Hu-
bert Webb, associate editor; Ein-
old Peitrey, snapshot editor; Paul
Hayes, advertising manager, and
Mary Clay Ledford, William Ad-
ams and Nancy Bots, sales man-
ag.

It is estimated that the annual
will cost \$2,000 this year—a re-
duction of \$1,000 over the 1935
edition.

Success

OUR SINCEREST WISH

For

President Babb

and

The Morehead State Teachers
COLLEGE
BLAIR BROS.

"A Complete Department Store"
Morehead, Kentucky

Progress Marches On . . .

When Morehead was little more than a settlement - when automobiles were unheard of - when education in Eastern Kentucky consisted of one-room schools, no colleges and few high schools, the C. E. BISHOP DRUG COMPANY was serving the needs of a community.

Today, Morehead represents one of Kentucky's fastest growing cities. Opportunities here are unlimited. Morehead has kept pace. The C. E. BISHOP DRUG COMPANY likewise has grown and now serves this communi-ty's drug needs with the best products available in keeping with the most modern methods!!

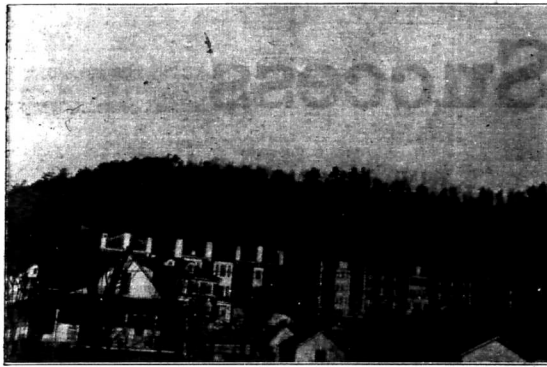
On May 5, Morehead College takes another step forward with the inauguration of H. A. Babb, President. Progress marches on

The C. E. Bishop Drug Company

"The Rexall Store"

"MORE THAN 40 YEARS SERVICE TO THIS COMMUNITY"

A Birdseye View of Northwest Corner of Morehead Campus



HOW THEY DID IT IN 1894

Explained in Catalogue on Hargis and Hodson Halls—The Two Buildings That Comprised Plant Before Turn of Twentieth Century

Hargis and Hodson Halls composed the Morehead Normal School of 40 years ago, according to the catalogue of 1894. At that time it was an adjunct of the University of Kentucky.

The faculty was composed of Ralph Julian, principal, Mrs. P. H. Julian, assistant, J. W. Riley, principal of the business department, Paralee Clarke, teacher of instrumental music, Z. T. Young, Jr., teacher of typing, and Mrs. Philip Goodan, matron.

Dr. F. C. Burton, in his historical description of the school, points out the growth of the institution in the seven years of its existence. His closing statement was prophetic: "To the Morehead Normal School, with such a history as a background and almost unlimited opportunities before it, no parent need fear to entrust his son or daughter."

Instruction did not extend beyond the third year in high school. Many of the 137 pupils enrolled were in the primary and intermediate departments. Forty-eight were enrolled in the teachers' course, and no one was listed as 'suspended.' Board was only \$2 per week.

Direct Singers That Appear At Inaugural



PROF. L. H. HORTON
Lewis Henry Horton, above, is director of the Foster Choral Club and head of department of music. His chorus has arranged a series of musical numbers at the inaugural ceremonies of President H. A. Babb next Tuesday morning.

Beta Zeta Club Has New Project

By PAUL HAYES, President
In the spring of 1933 the Biology students organized a club which they named the Beta Zeta, Beta standing for the botanical sciences and Zeta for the zoological sciences, the members being those who are majoring in biological science.

Various projects have been carried on by the club. Last year a wild flower garden was built back of Allie Young Hall. This year the project has been a bird-banding program. Trips to many places of interest have been of educational value to the members, one being to the famous Carter Caves.

Beta Zeta has one of the largest enrollments of any club on the campus. Students that have 15 hours in Biology and a standing of one are eligible to membership. After becoming a member the standing of one must be maintained and the member must participate in the club activities.

The Cuban demand for matches is so far below the normal capacity of the nine factories located in the country that some are not operating at all and others are on part time.

present building, the training school was organized as a 12-grade school with 13 full-time critics and seven other part-time workers.

The selection of the name, Robert J. Breckinridge Training School, as the distinguishing title for this division of the college was particularly fortunate. Mr. Breckinridge was the sixth superintendent of public instruction in the Commonwealth and it was through his keen insight and untiring efforts that a real system of common schools came into being in this state. It is indeed fitting that an institution established for the purpose of promoting the interests of public education in Kentucky should go to this great character for its name.

In addition to providing student-teaching facilities for approximately 1200 college students this school has afforded educational advantages for hundreds of the boys and girls of Morehead and eastern Kentucky. The graduates receive an educational experience that is broad and enriched, and the record made by them in their later activities attests to the quality of the work done.

Plans for the future include increased library facilities, an expanded program of physical education, broad instruction in the household arts, and a commercial

department. With these additions to the present program the offerings of the training school will compare favorably with those of any modern institution of similar type.

EGYPT BUYING MORE AMERICAN TOBACCO

The growing popularity of the so-called "English" cigarettes in Egypt has resulted in an increased demand in that market for American leaf tobacco, says a report to the Louisville District Office of the Commerce Department. Imports of leaf tobacco into Egypt from the United States in 1935 amounted to approximately \$200,000 compared with \$156,000 in 1934. A small part of this advance is due to increased production of cigars. Leaf tobacco used in the manufacture of cigarettes is sought for the great bulk of Egypt's raw tobacco imports. Japan supplanted Greece in 1933 as the chief supplier of leaf tobacco to Egypt, indicating that sales of the lower-priced cigarettes are gaining. Owing to the fact that a large number of cigarette factories in Egypt are owned by Greeks the tobacco of Greece is given preference as far as possible. Egyptian exports of cigarettes in 1935 were at record levels, with approximately 73 per cent destined to the Netherlands.

Teachers' Training Classes Conducted Since Second Year

Breckinridge Training School One of Most Modern Plants Of Kind In South

NAMED AFTER ROBERT J. BRECKINRIDGE, LEADER

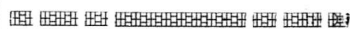
Provides Student-Teaching Facilities For More Than 1,500 Students

By WARREN C. LAPPIN, Director of Training School

Classes in which prospective teachers were able to do observation and practice teaching have been maintained by the college since the second year of its existence. In the beginning only two critic teachers were employed and they did their work in the Morehead Consolidated School. Later a third critic was added and an attempt was made to establish a rural training center. Soon, however, all three of these supervising teachers were brought on the campus and assigned space in the then existing buildings.

The next major step in the development of the school came in the form of housing it as a unit in the basement of Fields' Hall and offering a complete elementary school program under the direction of four supervisors. This organization continued until 1931, when, with the completion of the

THE BIGGEST AND BEST IN MOTION PICTURES . . .



As always - for 16 years the Cozy Theatre - will continue to give Morehead the finest in motion pictures.

During the past year we have installed new sound equipment and other modern fixtures in keeping with a POLICY OF PROGRESS.

We appreciate the patronage that has been accorded us - and feel that our continually increasing business is a testament of our steps forward.



COZY THEATRE

Congratulations - -

To

President H. A. Babb

and best wishes to The Morehead State Teachers College - one of the finest institutions in the South.

WE ARE PROUD TO BE IN BUSINESS IN MOREHEAD AND FEEL THAT OUR EVER-INCREASING PATRONAGE IS AMPLE PROOF OF THE SERVICE WE RENDER.

YOU will find an atmosphere at the MIDLAND TRAIL HOTEL that is homelike. Cool - Clean - Comfortable beds plus the finest foods in our immaculate dining room.

The Midland Trail Hotel

K. B. LYKINS, Mgr.

On U. S. 60

Mathematics And Physics Field At M. T. C. Progresses

Department Makes Plans to Move in New Building Under Construction

INSTRUCTORS PRESENT PAPERS IN MANY MEETS

Survey Discloses That Students Are Not Seeking Easy Courses

By DE. J. G. BLACK.

Department Head

The department of mathematics and physics has had a vigorous and wholesome growth since the time when Morehead State Teachers College was founded. In the first part of this period Prof. D. M. Holbrook, Miss Ruby Vannest and Miss Lola Troyer were active in its development. Professor Holbrook was with the department until the time of his death while from time to time others were brought in to help with the work. Among these are Miss Helen McGurk, Mr. John T. Kimbrough, Mr. Everett Blair and the present president of the institution, Mr. H. A. Babb.

In September, 1928, Dr. E. F. Allen came to the institution as head of the department of Mathematics and Physics and after a very successful year was offered a position with the Oklahoma A. and M. College.

In the fall of 1929, Dr. J. G. Black came as head of the department and he retains that position at present. In 1930, Prof. R. D. Judd, came as the head of the extension work and he has taught several courses in the department. By the spring of 1931 the enrollment had grown until a new instructor was needed and Mrs. Martha Blessing was added

at this time. Again in 1932 another instructor was needed and Mr. L. A. Far was employed in January. By this time the offerings in both Mathematics and Physics had been greatly enlarged and the enrollment in the advanced courses was very encouraging. Many students applied for major work in mathematics and others asked for minor work both in mathematics and physics.

A thing which may perhaps be interesting in view of the criticism that our students are seeking the easier courses and shunning the courses in the exact sciences is that of the 242 graduates of the institution so far 48 have either made mathematics their major or minor subject.

Due to lack of proper equipment the department is being increased and with the construction of the new science building good quality major work in this field will be offered. There have been 17 people minor in physics so far and the demand for majors in the field is increasing each semester.

The department is very proud of the scholarships of many of its major and minor students, many of whom were of very high scholarship rank in college and some of whom have secured rather enviable positions considering the seriousness of the times.

At the present time the department has the assistance of Mr. W. C. Wineland who was employed to take care of the increased enrollment this semester.

The department tries to keep abreast of the rapid developments in science and to this end has represented Morehead State Teachers College at many national and state meetings. Papers have been presented at the Atlantic City meeting of the American Association for the Advancement of Science, also at the Cleveland and the Pittsburgh meetings; also before the Kentucky Section of the Mathematical Association of America, the Kentucky Section of the American Association of Physics Teachers, while two members

One of New Members Of Morehead Regents



DR. ARVID O. TAYLOR

Dr. Arvid O. Taylor, prominent Maysville physician, was appointed to the Board of Regents of the College in February of 1935 to succeed Judge Allie W. Young, senior regent and founder of the school who died on February 18, 1935.

He has served as president of the Maysville City Board of Education, during which time he sponsored a drive for funds to erect the Maysville colored school.

The Maysville doctor is a native of Lewi county. His father, Dr. Robert N. Taylor, was a member of the Smithsonian Institute and the American Association for the Advancement of Science. The son was educated at the Louisville Medical College, Transylvania College and Wooster College.

He will present papers at the next meeting of the Kentucky Academy of Science.

The members of the department firmly believe that a student of college calibre should be able to take with credit courses in mathematics and the basic sciences and

that such courses will be of great value to the student and that a curriculum without such courses is like a banquet menu without meat.

There are now approximately 360 students in the department; 150 in physics and 210 in mathematics.

Girls' Athletics Are As Old As School At Morehead T. C.

(Continued from page 1, section 2)

ard the soccer field at a true lady-

like pace with a parasol for protection of the sun's rays.

Another year saw the activity girls donning bloomers and middies, and—long black hose—but—only after much discussion as to their effect upon the morals of the weaker sex.

In the school year of 1926-27, teacher training activity courses were accorded two hours per course, and health education was reorganized in accordance with other state teachers colleges and received considerable impetus through the efforts of Adelbert Thomas of the State Board of Health.

Following the resignation of Miss Wilson to take on the respon-

sibilities of being Mrs. Lane, Miss Katherine Riggs took over the reins for the year 1931-32 and very creditably carried on the work, giving it further prestige and recognition as a way of activities, and pointing the way to present trends.

In 1932, Miss Ernestine Troemel, graduate of the University of Wisconsin and M. A. from Teachers College, Columbia University, came from the University of Oregon to continue the directorship of health and physical education of the department since that time includes swimming classes in the new ultramodern equipped Sent Natatorium, tap dancing classes

offered to mixed groups, a minor in physical and health education, and the addition of a full time instructor to the personnel.

Miss Louise Caudill became the other member of the two-some now effectively holding down the department, in 1934 and is doing a splendid job in both the health and physical education phases—and the department is swinging along twice as well as ever before. Out of this period grew the present Women's Athletic Association, organized for the purpose of furthering the interest of girls in wholesome physical activity. The department has also been instrumental in awakening a desire to fulfill the need of physical education in the Training School.

A Former Student and Graduate OF THE Morehead State Teachers College

Extends Congratulations

to

PRESIDENT H. A. BABB

PARNELL MARTINDALE, Class of '34

WE invite visitors to the inauguration ---- and friends of the Morehead State Teachers College to visit us --

AMOS 'n ANDY

and

THE COLLEGE INN

RESTAURANTS

WE ARE BOOSTERS

of the

MOREHEAD STATE TEACHERS COLLEGE

AND EVERY EDUCATIONAL AND CIVIC ENTERPRISE

We Salute You President Babb

and hope your success at Morehead College is unlimited -----

THE MOREHEAD DISPENSARY

---- J. R. WENDEL, Mgr. ----

Dean Vaughan Will Introduce Delegates



DEAN W. H. VAUGHAN

William Hutchinson Vaughan, Dean of the Morehead State Teachers College since 1928, will introduce the official delegates to the inauguration of Harvey A. Babb as president of the College. Dean Vaughan upon graduation from Georgetown (Ky.) College in 1923 with the bachelor of arts degree became a field worker for the Kentucky Sunday School Association. Later he was called to his home town, Louisa, to teach English in the high school. In 1925, Dean Vaughan was elected superintendent of the Louisa City Schools. The George Peabody College for Teachers, Nashville, awarded him the master of arts degree in 1927. Since that time he has attended the University of Chicago in preparation for the doctorate.

Imports of leaf tobacco for consumption in Germany during January 1936, were approximately 4 per cent under the volume of imports for consumption in January 1935.

Industrial Art Has Expanded at MSTC

By J. T. MAYS,
Head of Industrial Arts Dept.
The industrial arts are those occupations by which changes are made in the forms of materials to increase their values for human usage. We live in an industrial age where occupational shifts are wide and rapid. Where our present industrial structure exists all our people, so it places a heavy responsibility on the public school to provide for youth the opportunity to understand, appreciate and make adjustments to the rapid changes which a machine age forces on modern social life.

Industrial arts had its beginning in the field of teacher training in the state of Kentucky with the opening of a department at Eastern Teachers College in 1910. Western Teachers College established a department in 1920, and Morehead opened a department in the new Training School building in February, 1931. This department has handled junior high school, senior high school and college industrial arts classes since it was established. The shop is adequately equipped with power machinery, work benches and library. Courses are offered in woodwork, metal work, mechanical and architectural drawing. The department has been so overcrowded of late that the college is establishing a college department of Industrial Arts in the new science building, which is under construction at the present time. This department will occupy one-half of the first floor of the science building and will be equipped with very best equipment.

GERMANY MAKING A NEW FERTILIZER

A new fertilizer known as "Huminal" and consisting of prepared peat moss to which chemical elements have been added in such fashion that they cannot be washed away by heavy rains is now being marketed in Germany, according to a report to the Louisville District office of the Commerce Department.

MODERN UP-TO-DATE

..... The most - particular persons find the MAYFLOWER just the place. Good food carefully prepared with cleanliness a by-word. Tasty sandwiches, cold drinks plus, unexcelled service are yours at the MAYFLOWER.....

..... We have always been staunch boosters of the Morehead State Teachers College and today we congratulate its new President H. A. Babb.

THE MAYFLOWER

In West Morehead On U. S. 60

CLELL BRUCE, Mgr.

NEW

MODERN

GIFT VALUES IN FINE JEWELRY

This month—the month of many gifts—we are offering many exceptional values.

Gifts that will be enthusiastically welcomed because of their fine intrinsic quality — yet remarkably low priced to make giving easy. See our splendid selection when in Lexington.

We join with the citizens of Morehead and Rowan County in extending congratulations and best wishes to Morehead State Teachers College and President Babb.

WHEN IN LEXINGTON VISIT

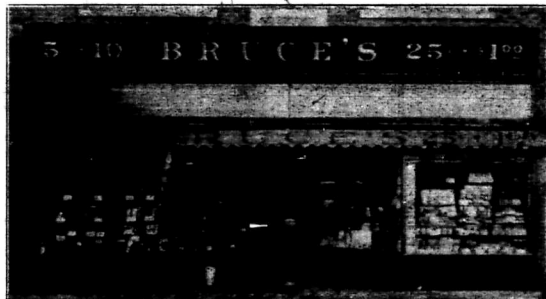
SKULLER'S

Lexington's Leading Jeweler and Silversmith

115 West Main St.

Lexington, Ky.

Bruces The Modern Store



Bruce's fully realize that the progress of their store depends to a great extent on the forward steps that the Morehead State Teachers College takes. We believe that the Regents of Morehead College have made a wise, just and popular move in the selection of Prof. Harvey A. Babb as the President of this great institution of higher learning. In these columns we commend the Board of Regents and congratulate Morehead's new President. As we have always done in the past, we stand ready and willing to offer to him and to the college our cooperation.

The Store Where The Students Trade

Formerly Morehead's 5-10 & \$1 Store

Bruces 5-10 & \$1.00 Store

EDUCATION DEPARTMENT OF MOREHEAD COLLEGE REFLECTS TREND FOR MODERN EDUCATION; JUDD REVIEWS GROWTH OF THIS FIELD SETTING OUT NUMBER OF INSTRUCTORS FROM YEAR TO YEAR; KEPT PACE WITH TIMES

Three Major Premises Goal of Present Administration; Has Avowed Aim to Train Best Possible Teachers For Elementary, Secondary Service

By R. D. JUDD,

Acting Head, Department of Education

The Department of Education of the Morehead State Teachers College has had a remarkable growth since its beginning. When the institution was first formed, there was only one faculty member in the Department of Education, C. D. Lewis. Mr. Lewis not only acted as the only member of the Department of Education, who taught all the Education in the institution, but he was also Dean of the College. There were at that time only ten active members of the faculty, who were as follows:

J. C. Burton, President
Charles D. Lewis, Dean and Education

C. O. Puratt, History
D. M. Holbrook, Mathematics
E. C. Enggan, Science
Inez F. Humphrey, English
Evelyn Royalty, Expression
RUBY VANAMANT
Emma Shadler, Music

Ethel Hard, Critic Teacher, first and second grades
Katie Carpenter, Teacher, Model Rural School
Willie May Watson, Matron

The offerings in the Department of Education at that time were largely confined to courses pitched on the high school level and a few courses given on the freshman level. The institution in 1923-24

only offered the first year of college work. There was one course offered the first semester to freshmen; namely, psychology. The second semester there were two courses in Education offered: Principles of Teaching, and Reading. These three courses comprised all the courses offered in Education on the college level when the institution was first established.

At present, the staff in the Department of Education consists of the following:

R. D. Judd, Acting Head of the Department
William H. Vaughan, Dean
Dr. R. L. Hoke
Dr. J. D. Falls
Dr. F. B. Miller
Dr. Clarence E. Nickell

W. C. Lappin

Now the department is offering over 20 courses, which would enable a candidate to more wisely select the subjects in which he is most interested. The fields in which the Department has been divided for the convenience of both instructors and candidates comprise elementary and secondary, with methods courses in the different subjects. These materials are integrated through the study of the psychology and philosophy, which is the warp and weft of all subject matter offered in the Department of Education.

The Department has endeavored to keep pace with modern trends in the development of curricular problems, and in view of this fact there are being offered next year some new courses which have not heretofore been offered. The old courses comprising Teaching the Common Branches and Classroom Management have been dovetailed into what we term now Fundamentals in Education. The ingredients of this course have been worked out rather carefully by a committee, and the findings are calculated to assist us in refining these two courses into one substantial and fundamental course. The analysis which has been worked out in these two courses and we are expecting to bring about in others, as The Teaching of Arithmetic, Educational Psychology, and The Teaching of Reading.

There are three major premises that the Department is now attempting to establish with reference to all courses taught in Education. First, there is the class discussion, led by the instructor and the students; second, there are the library problems which are incident to all courses, which the instructors are requiring students to work up, and third, there is the most important phase of observation and practice teaching. This third element we mean to stress more and more, as we believe out of it grow the real problems which teachers will be compelled to face in their particular field of service.

It is the avowed aim and purpose of this Department, as it is of others, to train the best possible teachers for service on elementary and secondary levels. There is already an over-supply of teachers in Kentucky, but there is not an over-supply of well-trained teachers. In the future, it shall be our task and duty to cull out, with unerring judgment, that teacher who for some professional reason would not make a desirable teacher. The major work

as we now have it, synchronized is mapped out to train teachers for two fields of service—the elementary and secondary levels. However, work is also offered of administrative character, which chiefly pertains for the position of County Superintendent.

English Section Keeps Pace In Fast Growth of College

Many New Courses Have Been Added Over Period OF YEARS

FULL SCHEDULE GIVEN

By INEZ FAITH HUMPHREY,

Head of English Department

The Department of English in Morehead State Teachers College has grown with the school. During the first year there was only one teacher of English, Miss Inez Faith Humphrey, who has remained with the school and acted as head of the department to the present time. Now there are five regular teachers on the staff, supplemented by three or four others during the second semester and the first summer term each year. Two excellent teachers who have been here for ten years or more are Miss Bettie M. Robinson and Dr. Andrew Estren.

At first the courses in expression were somewhat independent of the department of English. Miss Evelyn Royalty did excellent work in expression and dramatics, and has left a lasting impression on many people in eastern Kentucky. Since 1924 Miss Lucille Caudill has taught the courses in speech and dramatics and has been sponsor of the Dramatic Club, which has presented some notable plays, such as "Outward Bound," "The Black Flamingo," and "Mr. Pim Passes By."

Mr. Ralph Hudson has been of great service as sponsor of the Trail Blazer, as teacher of journalism and creative writing, and as assistant sponsor of the English club and its magazine. Mr. Emmett Bradley has helped to encourage oratory and to prepare students for the oratorical contests. Mrs. Mildred Silver has done excellent service as head of the English work in the high school department of the training school, in teaching and in fostering journalism and creative writing.

The Department of English in the college has attempted to link its work with the training schools

Dr. Rose, Senior Member M. C. Group



DR. J. M. ROSE

Dr. J. M. Rose, who is a member of the Morehead Board of Regents, is the senior Republican member of the Kentucky Senate, having represented the 22nd Senatorial District for the past 12 years. He lives in Olive Hill.

Senator Rose received his education at Berea College, Smith's Business School, Lexington, and the University of Louisville, where he received the medical degree in 1909. Since that time he has done post-graduate work in surgery at the medical clinics in Chicago and New York.

He has served on the College board since 1923, having been appointed by Gov. Flem D. Sampson. Doctor Rose was a delegate to the Republican National Convention in 1924, casting his vote with other members of the Kentucky delegation for Calvin Coolidge.

especially through the courses in literature for children, and has had most hearty cooperation from the very efficient critic teachers in the grades.

At first the literary club activities were carried on through the Putton Society and the James Lane Allen Society, but in later years those clubs have been superseded by more specialized clubs. The English majors have had an informal club for five years. In 1935 they chose the name, Quill and Quair, and decided to issue a literary magazine by that name. The success of the "Quill and Quair" warrants its continuance.

Since 1927, fifty of the 242 grad-

uates of Morehead State Teachers College have been English majors and many of them are teaching in positions of influence and responsibility. The department has added new courses from time to time and now contemplates adding five more courses as opportunity offers or need arises for them: Modern Drama, Early English Literature, Chaucer, Browning, and World Literature. Dr. Cotton Noel, poet laureate of Kentucky, will teach two courses, chiefly poetry, during the first term this summer, beginning June first.

British Columbia planted only 17 acres of tobacco in 1935, having reduced the crop from 459 acres in 1934 and 537 in 1933.

Chinese authorities have taken definite steps designed to curtail finally the absolute, the hand-rolled cigarette trade. The measure was due to increasing irritation of the machine-made cigarette industry and to the rapid growth of the hand-rolled traffic which is now cutting seriously into potential tax revenues of the country.

The establishment of a new radio broadcasting station in Baghdad is expected to appreciably increase the demand for radios in Iraq.

Subscribe for The Independent

Congratulations

President

H. A. Babb

and wishing you a full measure of success in your

NEW UNDERTAKING

Model Laundry and Dry-Cleaners

Phone 116

PRESIDENT BABB We Congratulate You

On behalf of the Rowan County Board of Education, the teachers and the patrons, I extend greetings to Morehead's new President. Our teachers—almost 100 per cent—are products of Morehead College, and we believe that is one of the main reasons, our school system is enjoying remarkable success.

ROY CORNETTE
Superintendent Rowan County Schools

Bottled Sunshine

We've captured each brim ming sunray - stolen the health-giving properties of sunshine itself for your milk. Every bottle of RED ROSE milk contains these precious elements of Old Sol's magic to build bodies and protect health.

Drink bottled sunshine all through the year and note how refreshing, how energizing, and how appetizing it is.

Cooling on hot summer days, invigorating during cold Winter... that's milk.

Our milk is sold in the Morehead College Cafeteria, making strong bodies stronger.

Red Rose Dairy



QUALITY SPRING FOODS

MOREHEADS REGAL GROCERY

Joins with the business men, citizens, churches and schools of Morehead and the educationally-minded people of Kentucky in extending our congratulations to President Harvey A. Babb, and hope that his work at Morehead will always be as successful as his start has been.

Through cooperative buying, eliminating middleman's profits, and by shaving margin of profits through a large volume of business, the REGAL STORE is able to pass on to its customers savings in groceries that mean economy and balanced household budgets.

We Are As Near

As Your Telephone

ALWAYS A BOOSTER OF HOME ENTERPRISE AND CIVIC AFFAIRS

The Regal Store

Orville Howard, Mgr. Telephone 25

What Morehead Means to Eastern Kentucky



Situated in the center of a population area of 563,905. No competing institution within an average radius of 100 miles. Within two hours' driving distance of 65.9 per cent of the population of Northeastern Kentucky.

The only institution of its kind in Northeastern Kentucky in a continuous area of 9,982 square miles.

Roads now built or under construction make the distance to Salyersville and Paintsville 50 miles less, to Prestonsburg and Pikeville 65 miles less on the Southeast, bring Maysville and Brooksville 65 miles nearer, and Covington, Newport, and Falmouth 30 miles nearer on the Northwest.

Conveniently connected by railroad and bus lines to all of Northeastern Kentucky, insuring a minimum transportation expense for students and visiting relatives.

Mary Page Milton and Henry Clay Haggan.

Costume and academic procession: W. H. Vaughan, chairman; C. B. Lane, L. A. Fair and Dr. F. B. Miller.

Banquet: Henry Clay Haggan, chairman; D. J. Gammage, Mrs. Myrtle W. Hall, Edna Neal, Juanita Minish, Katherine D. Carr, W. B. Jackson and John L. Sullivan.

Housing and entertainment: Curraleen Smith, chairman; Essex Robinson, Dr. J. D. Falls, R. D. Judd, and R. F. Terrell.

Publicity: Mary Page Milton, chairman, and Paul W. Holman.

Invitations: Amy Irene Moore, chairman; Essex Robinson and Mary Page Milton.

Decorations: Mrs. Naomi Clay-

pool, chairman; Ralph M. Hudson, Evelyn Odom, Lucille Catlett, Katherine Moore, W. H. Rice and Jesse T. Mays.

History and permanent records: Dr. A. Y. Lloyd, chairman; C. O. Perath, E. K. Senff and Anna B. Carter.

Photographic: Dr. W. A. Welter, chairman and Robert Alfrey.

Ushers: Mary Page Milton, chairman, and Harry Davis.

May Day program: Ernestine Troemel, chairman; Louise Caudill, Lucille Caudill, Neville Finckel, G. D. Downing and W. D. Scroggins.

The Mexican Government now has under consideration the construction of a sugar refinery in the State of Morelos.

CANDY SALES STILL INCREASE

Sales of confectionary and chocolate products in March registered an increase of \$304,743 in March 1936, over March, 1935, according to reports to the Louisville District Office of the Commerce Department.

Approximately 10,900,000 gallons of gasoline were produced from 113,500 tons of coal by the British oil-from-coal plant located at Billingham-on-Tees, during the last three months of 1935.

Japanese cotton-manufacturing interests in China are continuing their efforts to increase the production of cotton in Shantung, Providence.

MOREHEAD COLLEGE GRANTS CERTIFICATES

(Continued from page 1, section 3)

ing in the elementary field. The provisional high school certificate requires the degree and 18 hours of professional work in secondary education. Otherwise, it is identical to the elementary certificate.

Requirements for the provisional certificate in administration and supervision include 24 hours in specified education courses and the degree.

Attendance officer's certificates are available to those who have completed two years of work, including courses in pupil account-

Organize Campus Club In Fall Of '33

Promotion of Leadership, Fellowship Aim of New Student Group

By EARL DEAN, President

The Campus Club of Morehead State Teachers College was organized in the fall of 1933 to promote leadership and fellowship among the men of the college. It is the first organization of its type, striving to realize its goal by promoting school activities, tradition, school spirit, and finally to make for the college a name which all concerned will adore and aspire.

Harold Holliday, and a few other energetic men, mothered the club through its initial strides, finally receiving administrative recognition in '33. Since that time the organization has fully realized its founder's aims and has taken a vital place in student endeavor.

The Campus Club has promoted many school activities during these three years. Important among these were three Winter Carnivals, bonfires, rallies and other means of supporting the football team, and, above all, school spirit in general.

The intentions of this club are above reproach. It is not factional and has no personal greed toward any person or activity, no desire for individual gain or prestige. Again, its sole objective is to make Morehead State Teachers College an institution which the generations to follow will admire, respect and boost.

Germany has been selling an increased volume of railroad equipment in foreign markets.

Arrangements for the inauguration Tuesday morning of Prof. Harvey A. Babb, Mt. Sterling, as the third president of Morehead State Teachers College, have been made by 13 committees, composed of faculty members and students. Music has been provided by Lewis H. Horton, departmental head; Marvin E. George, Keith P. Davis, and Dorothy J. River.

Steering committee: Deon W. H. Vaughan, chairman; R. D. Judd, Dr. J. G. Black, Dr. J. D. Falls, W. C. Loppin, Curraleen Smith,

Committees Play Part In Program

13 Groups Have Charge Of Everything At Babb Inauguration

We Do Our Own Baking

Why not relax this summer and let us worry about baking in the hot summer weather that is on its way ---

You'll find our cakes and pies every bit as fresh and delicious as those which come out of your own kitchen and they'll cost less too!!!

THIS DAY

OUR COMMUNITY IS HONORED

BUT

FOR THE HOT AND COLD DAYS REMEMBER

71

Morehead Ice And Coal Co.

MOREHEAD, KENTUCKY

Morehead's Finest Restaurant

Pauses to wish continued success for the Morehead State Teachers College and to congratulate President Babb.

We invite visitors to the inauguration to visit us for good food carefully prepared - Priced Right!

THE DIXIE GRILL

Plate Lunches Sandwiches
Cigarettes Pastries
Fountain Service

"Morehead's Finest Restaurant"