

Received: 29 July 2020

Revised: 9 November 2020


Accepted: 8 December 2020

DOI: 10.1111/gcb.15499



PRIMARY RESEARCH ARTICLE

Anthropogenic climate change impacts on copepod trait biogeography

Niall McGinty¹  | Andrew D. Barton² | Nicholas R. Record³ | Zoe V. Finkel¹ | David G. Johns⁴ | Charles A. Stock⁵ | Andrew J. Irwin^{1,6}¹Department of Oceanography, Dalhousie University, Halifax, NS, Canada²Scripps Institution of Oceanography and Section of Ecology, Behavior and Evolution, University of California, San Diego, CA, USA³Bigelow Laboratory for Ocean Sciences, East Boothbay, ME, USA⁴CPR Survey, Marine Biological Association, Plymouth, UK⁵Geophysical Fluid Dynamics Laboratory, National Oceanic and Atmospheric Administration, Princeton University, Princeton, NJ, USA⁶Department of Mathematics and Statistics, Dalhousie University, Halifax, NS, Canada**Correspondence**Niall McGinty, Department of Oceanography, Dalhousie University, Halifax, NS, Canada.
Email: nmcginty@mta.ca**Funding information**

Simons Collaboration on Computational Biogeochemical Modeling of Marine Ecosystems, Grant/Award Number: 549935; NASA, Grant/Award Number: NNX16AG59G; Simons Foundation

Abstract

Copepods are among the most abundant marine metazoans and form a key link between marine primary producers, higher trophic levels, and carbon sequestration pathways. Climate change is projected to change surface ocean temperature by up to 4°C in the North Atlantic with many associated changes including slowing of the overturning circulation, areas of regional freshening, and increased salinity and reductions in nutrients available in the euphotic zone over the next century. These changes will lead to a restructuring of phytoplankton and zooplankton communities with cascading effects throughout the food web. Here we employ observations of copepods, projected changes in ocean climate, and species distribution models to show how climate change may affect the distribution of copepod species in the North Atlantic. On average species move northeast at a rate of 14.1 km decade⁻¹. Species turnover in copepod communities will range from 5% to 75% with the highest turnover rates concentrated in regions of pronounced temperature increase and decrease. The changes in species range vary according to copepod traits with the largest effects found to occur in the cooling, freshening area in the subpolar North Atlantic south of Greenland and in an area of significant warming along the Scotian shelf. Large diapausing copepods (>2.5 mm) which are higher in lipids and a crucial food source for whales, may have an advantage in the cooling waters due to their life-history strategy that facilitates their survival in the arctic environment. Carnivorous copepods show a basin wide increase in species richness and show significant habitat area increases when their distribution moves poleward while herbivores see significant habitat area losses. The trait-specific effects highlight the complex consequences of climate change for the marine food web.

KEYWORDS

body size, climate change, Continuous Plankton Recorder, copepods, diapause, diet, diversity, trait biogeography

1 | INTRODUCTION

Pelagic ecosystems have been strongly influenced by climatic change, most noticeably with the increase in ocean temperature (Richardson, 2008), but also through changes in other important environmental

conditions such as salinity, mixed-layer depth, and chlorophyll concentration (Curry et al., 2003). Ocean warming has been implicated in changes to the distribution of species across all trophic levels including plankton (Barton et al., 2016; Thomas et al., 2012), marine fish (Pinsky et al., 2013), and marine mammals

(Hazen et al., 2013; Record et al., 2019). Zooplankton play key roles in the pelagic ecosystem, acting as the link between primary producers and higher level consumers in marine food webs. As an important food source for many commercial fish species during key stages of their life cycle, changes to zooplankton annual abundance and seasonal dynamics can have significant effects on global fisheries. For example, successful cod recruitment in the North Sea is linked to years with high abundance of key plankton prey species for cod larvae (e.g., *Calanus finmarchicus*; Beaugrand et al., 2003; Beaugrand & Kirby, 2010; Olsen et al., 2011).

Due to the short generation times and fecundity of zooplankton, their populations can rapidly respond (<1 year) to changes in the marine environment (Richardson, 2008) including to changes induced by anthropogenic pressures (Bedford et al., 2020). As a result, past changes in zooplankton dynamics have been used as ecosystem indicators to inform marine policy and ecosystem management (McQuatters-Gollop et al., 2015). We focus on copepods as they typically account for between 70% and 90% of mesozooplankton abundance, are pivotal in many pelagic food webs (Steinberg & Landry, 2017), and are major contributors to carbon sequestration in the deep oceans via vertical migration and the lipid pump, with lower bound estimates around 0.25 Pg C year⁻¹ (Record et al., 2018), and species-specific analyses suggesting that the number is likely even higher (Jónasdóttir et al., 2019). Copepods have been shown to shift their distribution, phenology, or both in response to the displacement of their optimal thermal habitat (Edwards & Richardson, 2004; Poloczanska et al., 2013). Changes in timing across trophic levels can vary significantly leading to large-scale ecosystem alterations and the break-down of established food webs caused by trophic mismatch (Edwards & Richardson, 2004). Previous efforts to model the potential climate impacts on zooplankton abundance and distribution have primarily focused on modeling of ecologically important copepods, but one drawback of this approach is the challenge of generalizing the analysis of one species to others or whole communities. Here we shift focus from species to three functional traits to assess the functional biogeography of copepods in the North Atlantic. Specifically we consider body size, dietary strategy, and diapause that mediate growth, reproduction, and survival (Litchman et al., 2013).

Zooplankton traits including body size, dietary strategy, and diapause are known to structure realized niches of copepods in the present ocean (Benedetti et al., 2016; Brun et al., 2017; McGinty et al., 2018). Body size is considered a master trait for all planktonic organisms as it constrains many other traits including feeding behavior (Prowe et al., 2019) and diapause (McGinty et al., 2018). Body size has a defined biogeography adhering to Bergmann's temperature-size rule with the larger individuals found in the colder higher latitudes (Brun et al., 2016; McGinty et al., 2018) and can vary seasonally depending on the community composition (Evans et al., 2020). Dietary strategy appears to have a strong effect on species biogeography with significant niche differentiation of carnivorous copepods that tend to dominate warmer waters with lower chl-*a* biomass and herbivorous copepods which are found in cooler

waters with higher chl-*a* biomass (McGinty et al., 2018). Herbivorous strategies also tend to favor species that can adapt to extreme temperature changes and food availability through lipid storing and by employing diapausing strategies (McGinty et al., 2018). The strength of these trait-derived niche-environmental relationships highlights the importance of using traits to anticipate the potential effects of future climate change (Barton et al., 2013). Using a niche characterization for phytoplankton (Irwin et al., 2012), a basin wide community change and community reorganization has been projected for the next century with a median northward movement of 12.9 km decade⁻¹ (Barton et al., 2016). Changes in phytoplankton communities will affect copepods, likely affecting spatial distribution of herbivores which depend directly on primary producers and carnivores which are secondary consumers. Similarly, biogeographic changes in herbivorous zooplankton will affect phytoplankton communities, although we do not explore that feedback here.

We use species distribution models (SDMs) to identify the relationship between patterns of biogeography for each species and the local environmental conditions (Elith et al., 2006; Elith & Leathwick, 2009). SDMs have revealed taxonomic structure in phytoplankton realized niches (Brun et al., 2015; Irwin et al., 2012) and trait-based differences in the realized niches of zooplankton (McGinty et al., 2018). SDMs have been used to project potential changes future climatic change may have on the biogeographical distribution and movement of species using projected oceanic conditions as the environmental predictors of the future habitat. Individual species projections have shown that poleward movements of up to 23 km year⁻¹ over may occur for *C. finmarchicus* (Beaugrand et al., 2008). A mean poleward shift of 8.7 km decade⁻¹ was detected for 14 of the most abundant zooplankton species of the North Atlantic (Villarino et al., 2015) using SDM techniques. Climate projections based on copepod niches have largely been investigated using small collections of species and generally do not consider the potential community responses (e.g., changes in species richness) or trait structure (but see Benedetti et al., 2018 for the Mediterranean).

We quantify projected changes to copepod communities in the North Atlantic over 100 years between the late 20th and late 21st centuries and categorize these changes using copepod functional traits of body size, dietary mode, and diapause strategy. We develop SDMs for a set of 62 copepod species using observations from the Continuous Plankton Recorder (CPR) collected between 1958 and 2000. Insights into the potential future changes of zooplankton dynamics in the pelagic ecosystem are developed by combining coupled ocean-climate model projections of future ocean conditions with statistical analysis of historical biogeography of zooplankton. Environmental variables used for developing the SDMs are derived from the Geophysical Fluid Dynamics Laboratory's Earth System Model GOLD (ESM2G) under a "business as usual" approach to greenhouse gas emissions (RCP8.5). Environmental change is not expected to be uniform across the North Atlantic, with areas of warming and cooling expected (Bopp et al., 2013). As a consequence, we anticipate hotspots where the greatest changes in copepod community structure are likely to occur and seek to identify the key traits

associated with these changes. By focusing on functional traits rather than species we aim to provide a unifying view of the consequences of climate change across all copepods in the North Atlantic linking body size, dietary strategy, and diapause to key ecological and biochemical consequences of food quality, food web structure, and carbon trophic transfer and export efficiency.

2 | METHODS

2.1 | Study area and biotic and abiotic data

Our study region comprised the North Atlantic and shelf sea regions between 35° and 70° N. Species were selected from the CPR survey spanning more than 60 years (Richardson et al., 2006). The CPR survey is unrivalled in temporal and spatial coverage, but depth sampling is restricted as the CPR device is towed at ~7 m depth behind ships of opportunity (Richardson et al., 2006). Most copepod species undergo large diel vertical migrations with larger near-surface abundances found at night than during the day (Hays, 2003). Our study aggregates samples across large swathes of space and time (1° and 1 month) combining nearby samples throughout the day ameliorating the problem of surface sampling. The process of diel vertical migration aids in providing a picture of depth-integrated zooplankton communities (Hosie et al., 2003) with surface CPR samples found to correlate with abundance estimates of *C. finmarchicus* down to 100 m (Helaouët & Beaugrand, 2009).

While the use of abundance estimates have been advocated for distribution modeling, we chose to reduce the data into aggregated 1° monthly grids and convert the species into a presence-only dataset. Abundance data can provide further information on changes within a community, however, the processes that govern abundance operate at finer resolutions than those investigated here (Boulangéat et al., 2012). Our interest was in modeling the realized niches of species and identifying the biogeographical distributions a species could maintain given its physiological constraints which can be identified using a presence-absence dataset (Chase & Leibold, 2003). Our approach allowed us to compare the changes of both common and rare species on a similar scale as we focus on logistic probabilities (0–1) of occurrence and biogeographies as opposed to biomass or abundance (Barton et al., 2016). Taxa found in at least 30 of these monthly grids were retained for modeling, resulting in a set of 62 copepod species or genera (Table S1). For our analysis, we used seven environmental parameters known to directly indirectly zooplankton biogeography. These variables were (1) sea surface temperature (SST), (2) sea surface salinity, (3) mixed layer depth (MLD), (4) Chlorophyll-*a* (Chl-*a*), (5, 6) *u* and *v* current vectors from the (ESM2G) model (Dunne et al., 2012), and (7) Bathymetric Depth which was taken from the GEBCO 1 arc-second resolution dataset (Hall, 2006). Temperature affects the physiological and metabolic processes of the individual such that sustained changes to the ocean temperature will lead to changes at the population level. While others can alter the vertical and horizontal transport of an individual (MLD—water column stability; *u*

and *v* vectors—eddy mediated transport; Keister et al., 2011). These data were aggregated into the same 1° monthly grids as the CPR to allow for direct matching of the environmental variables according to the location (grids) and time (month) when applicable. We used environmental variables from the GFDL ESM2G model averaged into monthly grid values for both historical (1951–2000) and future time periods (2051–2100) for training on historical values and for spatial projection of species biogeographies in the future. Full details on data aggregation and model selection can be found in McGinty et al. (2018).

2.2 | Species distribution models and validation

Species distribution models were developed for each of the 62 species using multiple model techniques to create an ensemble forecast of species distributions. For this effort we used BIOMOD which offers a framework to combine the various statistical techniques used in species distribution modeling using the 'biomod2' package in R (Thuiller et al., 2009). We chose two machine learning algorithms (random forest—RF and maximum entropy) and two linear regression (generalized linear models—GLM, generalized additive models) approaches which cover a large range of model flexibility from linear model relationships (GLM) to highly non-linear (RF). All modeling parameters remained fixed across species to maintain consistency and to prevent model overfitting. Model accuracy was evaluated using the area under the curve (AUC) and the true skill statistic (TSS). A weighted average of the models were generated using BIOMOD for each species where models with the highest AUC and TSS were given the greatest weighting to produce an ensemble model projection for the historical and future periods across the spatial domain of the North Atlantic. We used the ensemble model to generate an estimate of the logistic probability for each species in each 1° cell of the North Atlantic for the historical (1951–2000) and future (2051–2100) periods.

2.3 | Projected changes in species movement and community organization

Our analysis of species biogeography and total community characteristics between the historical and future periods followed a similar procedure outlined by Barton et al. (2016) for phytoplankton across the same spatial domain. The species' core biogeographical range was defined using the procedure outlined within BIOMOD, where a cell is considered to be part of a species' core range when the logistic probability of the species being present is above a threshold defined by the TSS for each model. The number of 1° cells above the specified TSS was considered the core range of the species and was converted to an area (km²) by calculating the grid cell areas as they vary with latitude.

Core range movement was calculated for each species by measuring the changes in the central position for each month between the historical and future periods. The central position was calculated by

finding the average location of all grid cells defined within the core range, weighted by the grid cell areas. The central position of each species was calculated for each month of the year and the change in the core position was calculated by finding the difference in the central position for the historical and future periods. An annual measure of median range shift was calculated with the total distance travelled (km), rate of change (km decade^{-1}) and the bearing (-180° to 180°) reported.

The Bray–Curtis similarity index was used to estimate the similarity of the copepod community within each 1° grid cell between the future and historical periods. The estimated logistic probability of a species being present was used to compare the changes within the community. The smaller the Bray–Curtis index the less similar the community is between the two periods indicating a potential change to the copepod community through the gain and loss of the biogeographical range of the constituent species due to the changing environment.

We explored these patterns in more detail by assessing the changes to each species' habitat area and species turnover within a community. We converted the logistic probabilities for each species to a projected presence or absence using probability thresholds defined by maximizing the TSS from each model. The total habitat area for each species was calculated by summing the area associated with each projected presence location in both the historical and future periods. For each grid square we also calculated the species richness, species loss due to local extinction (*A*), retained species (*B*) and species gain due to local colonization (*C*) between the future and historical periods with the percentage turnover defined as $100(A + C)/(A + B + C)$.

We estimated the timing of the seasonal peak for each species using the monthly logistic probability for each species within each 1° grid. The seasonal peak was calculated as the weighted mean of the month (Jan = 1, Feb = 2, etc.) and the logistic probability as the weights (Edwards & Richardson, 2004). For each 1° grid, the median seasonal peak for all species was calculated for both the historical and future periods with the difference providing a spatial reference for how timing of the community changes across the region.

2.4 | Projected changes in trait structuring

Species were classified into trait categories for (1) total body length (0–2.4 and >2.5 mm), (2) diapause behavior (diapause, non-diapause), and (3) dietary strategy (Carnivore, Herbivore) which were derived from the comprehensive copepod trait database compiled by Brun et al. (2017). These traits were found to structure present day copepod niches in both the Atlantic and Southern Oceans (McGinty et al., 2018). The mean niche values across each environmental gradient were found by calculating the weighted mean, using the logistic probability as the weight function. We assessed the changes in the logistic probability from historic to future periods within each of the four size categories by calculating the difference in the historical and future median logistic probability of each size class within each 1° grid.

Changes in the distribution of the three trait strategies were examined by calculating the changes in the ratio of trait categories between the historical and future periods. Species were defined as

present or absent in each grid cell based on the TSS thresholds of the logistic probabilities derived from the BIOMOD model. Ratios of diapause–non-diapause, small sized (<2 mm)–large sized (>2.5 mm), and carnivore–herbivore species were calculated for both periods. Differences in the ratios between both periods indicate how the spatial trait structure is expected to change over time.

3 | RESULTS

3.1 | Changes to environment

Mean temperature increases of 1.25°C are expected across the North Atlantic, with peak temperature increases of almost 4°C found on the NW Atlantic Shelf in a region ~ 500 km east of Newfoundland with cooling of similar magnitude expected in the subpolar area south of Greenland. This results in almost 8°C increase in the temperature differential between these regions of the North Atlantic (Figure 1a). Salinities show a strengthening of the latitudinal salinity gradient with a freshening of the ocean occurring in the subpolar and Arctic regions and increase in surface salinity occurring in the subtropical and tropical regions (Figure S1b). MLD decreases throughout much of the North Atlantic (Figure S1c). Chl-*a* concentration decreases most in the lower latitudes and increases most significantly in upwelling and subpolar regions (Figure S1d). The *u* and *v* velocity vectors (that is, East–West and North–South, respectively) show bordering areas of increases and decreases in the mid-Atlantic oriented along the longitudinal and latitudinal gradients (Figure S1e,f).

3.2 | Model performance and niche characteristics

Area under the curve values varied between 0.67 and 0.97 with a mean of 0.86 while TSS values varied between 0.24 and 0.87 with a mean of 0.67 (Figure S2a,b). There were no significant differences in the overall performance of each of the four SDM methods averaged across all species. For all species we were able to find at least one model that satisfied our lower limit criteria of an AUC > 0.7 and TSS > 0.5 .

Mean niche values for the historic period varied according to trait groups (Table 1). For example, mean SST niches differed between the three trait category groups with herbivorous, diapausing, and larger body sized copepods occupying colder niches than their carnivorous, non-diapausing, and smaller bodied counterparts. The historical distribution showed differences in the mean historical latitude of the trait groups with diapausing, herbivorous and larger (>2.5 mm) body sized copepods appearing between 4° and 6° of latitude further north than their opposing counterparts.

3.3 | Species movements and changes to habitat

The majority of species displayed a net northward movement in their core range with 66% of species moving an average distance

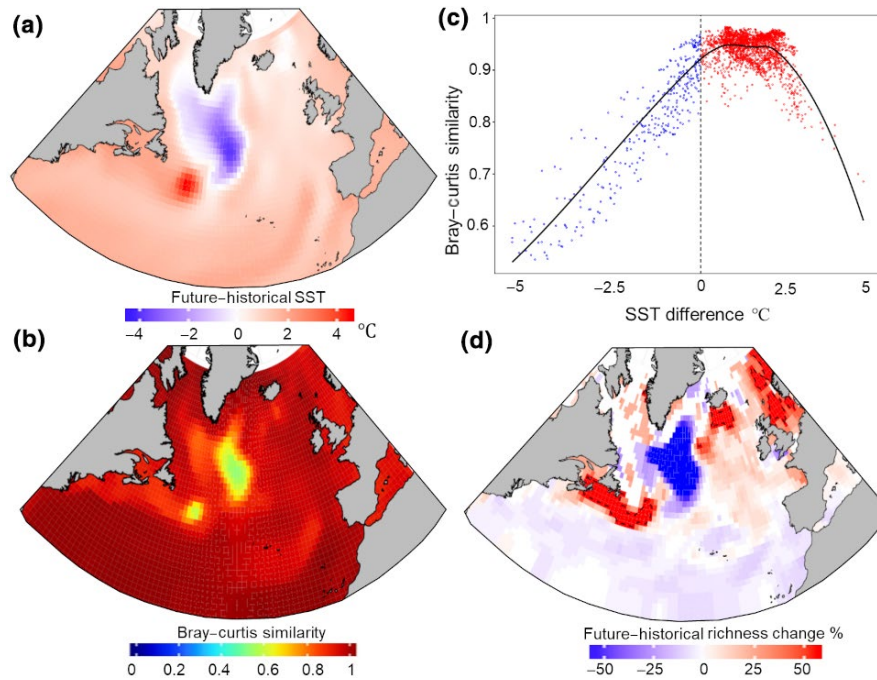


FIGURE 1 (a) The projected change in sea-surface temperature (SST, °C) between the future and historical period, (b) the Bray-Curtis similarity between the projected future and historical communities at each grid box, (c) the relationship between Bray-Curtis similarity and the corresponding difference in the projected future and historical annual mean ocean temperature, and (d) the projected change in the species richness of the copepod communities between the future and historical period. Warmer colors indicate areas with the largest increases in SST (a), areas with the highest Bray-Curtis similarity (b) and the largest increases in species richness (d). A vertical dashed line on panel (c) corresponds to locations with no mean temperature change between the historical and future periods. Dashed lines on panel (d) indicate the 50% contour for species richness change. Projected changes in additional environmental conditions are shown in Figure S1 [Colour figure can be viewed at wileyonlinelibrary.com]

TABLE 1 The mean niche values (mean^{SE}) of the five most important environmental parameters for each biological trait (1) Diapause behavior—Yes/No, (2) Dietary strategy—Carn (Carnivore), Herb (Herbivore), and (3) Body size—<2.5 and >2.5 mm for historical (1951–2000) data. Also shown are the mean biogeographical parameters for each trait group. Estimates of the total habitat area (Area km²) and the central position of the core range (Hist lat) are shown for the historical period (1951–2000). The projected changes to the total habitat area expressed as a % of the historical area (Fut/Hist %), and the rate of species movement per decade (Movement, km decade⁻¹) between the future and historical period is also shown. For bearing see Figure 2b

	Niche values					Species range			
	SST	SSS	Chl- <i>a</i>	MLD	Bathymetry	Area km ²	Hist lat	Fut/Hist %	km decade ⁻¹
Diapause									
Yes	11.15 ^{1.9}	32.48 ^{1.6}	0.58 ^{<0.1}	9.17 ^{2.6}	105.2 ^{18.1}	6.2 × 10 ⁻³	50.25	-4.97	6.96
No	15.45 ^{1.2}	34.52 ^{1.3}	0.41 ^{<0.1}	15.29 ^{2.1}	92.92 ^{14.4}	8.7 × 10 ⁻³	42.17	2.16	4.71
Dietary strategy									
Carnivore	16.12 ^{1.1}	35.5 ^{0.8}	0.32 ^{<0.1}	16.24 ^{2.8}	93.51 ^{17.8}	8.6 × 10 ⁻³	40.85	4.86	6.06
Herbivore	13.25 ^{1.7}	32.88 ^{1.8}	0.45 ^{<0.1}	12.08 ^{2.1}	94.43 ^{12.6}	7.6 × 10 ⁻³	46.48	-4.93	5.43
Body size									
<2.5 mm	15.41 ^{1.2}	34.11 ^{1.7}	0.42 ^{<0.1}	15.14 ^{2.2}	87.42 ^{15.7}	8.6 × 10 ⁻³	42.06	0.82	5.07
>2.5 mm	13.62 ^{1.8}	34.28 ^{1.7}	0.41 ^{<0.1}	12.95 ^{2.6}	104.6 ^{15.1}	7.8 × 10 ⁻³	46.06	0.73	5.24

of 18.9 km decade⁻¹ northward while the southward moving species travelled a distance of 9.1 km decade⁻¹. The greatest movement occurred in species with historical core ranges in the mid-latitudes >42°N, moving on average 7.2 km decade⁻¹ more than species in the tropical and subtropical region (Figure 2a).

Almost 75% of species were projected to move in an eastward trajectory regardless of their movement latitudinally (Figure 2b). The central position of carnivore habitats moved 0.49 km decade⁻¹ faster than herbivores. Carnivores showed an average of ~5% increase in core habitat area compared with a ~5% decrease

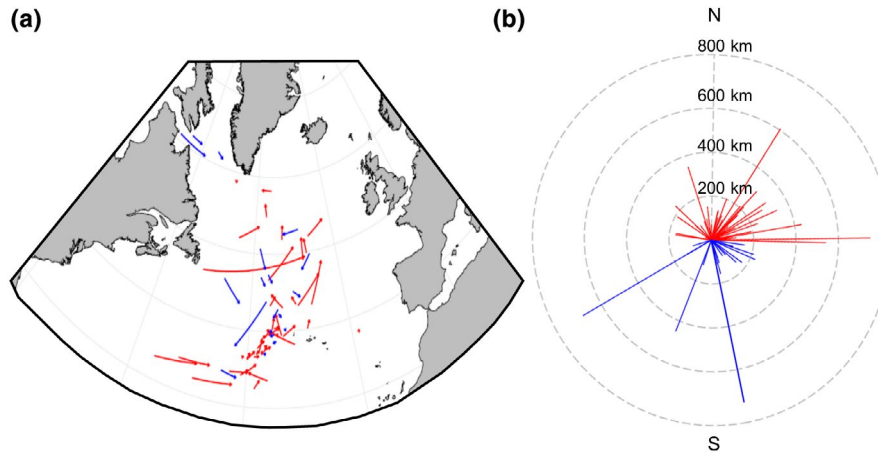


FIGURE 2 (a) The change in the central position of the biogeographical range of each species between the present (1951–2000) and future (2051–2100) periods. The arrow origin is the position in the historic period and the end the position in the future period. (b) The same changes, but with all vectors starting at the same location to highlight the relative distance (km) and direction of the change in the central position of each species' biogeographical range between the historical and future periods. The direction of movement are colored based on the net northward (red lines) or net southward (blue lines) movement of each species to aid visualization [Colour figure can be viewed at wileyonlinelibrary.com]

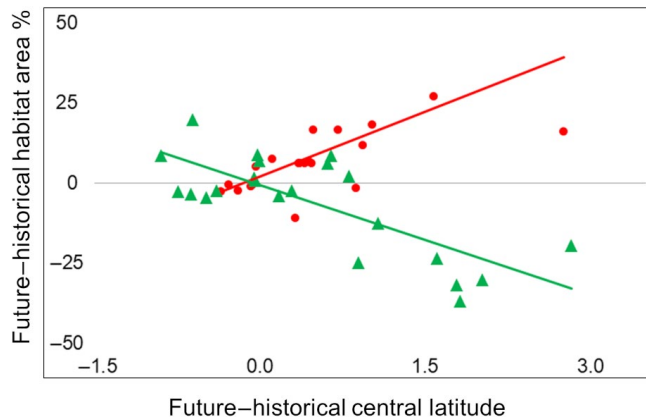


FIGURE 3 The changes in the central latitude position (CL, °) and the percentage change in total habitat area (HA) are calculated for each herbivorous ($n = 21$ —green triangle) and carnivorous ($n = 22$ —red circle) species. Linear regressions are: $HA = 13.48 \cdot CL + 2.1$ ($R^2 = 0.38$) for carnivores (solid red line) and $HA = -10.3 \cdot CL + 0.75$ ($R^2 = 0.49$) for herbivores (solid green line). The dashed gray lines show the zero x and y intercept [Colour figure can be viewed at wileyonlinelibrary.com]

for herbivores. Diapausing copepods moved $2.2 \text{ km decade}^{-1}$ faster than non-diapausing copepods with a $\sim 5\%$ decrease in core habitat area. Differences in the core range movement and changes in core habitat area were minimal for both body size categories. Differences in species movement between the two groups were less than $0.2 \text{ km decade}^{-1}$ while both size categories showed $<1\%$ increase in core habitat area (Table 1). Examining the species-specific changes in habitat for both trait groups we found that 75% of all carnivorous species showed a net positive increase in habitat area in contrast to 44% of herbivorous copepods. There was a significant positive relationship between the change in habitat and the change of the central latitude position for carnivores while a contrasting significant negative relationship was found for herbivores (Figure 3a).

3.4 | Phenology

The mean time of peak prevalence (phenology) of the copepod community varied between May and July across the North Atlantic (Figure 4).

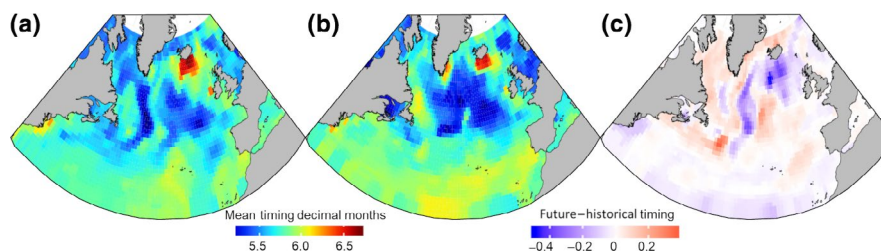


FIGURE 4 The mean time of peak prevalence in decimal months (e.g., June 15th = 6.5 as June is the 6 month and $15/30 = 0.5$) for each species in the copepod community is averaged to quantify the peak of the copepod community throughout the North Atlantic. The panels show the timing of peak prevalence during the (a) historical (1951–2000) and (b) future periods (2051–2100) and the (c) difference in mean timing between the two periods. Warmer (cooler) colors in panel (c) correspond to regions where the peak prevalence occurs later (earlier) in the year in the future period [Colour figure can be viewed at wileyonlinelibrary.com]

Historically, the earliest timing occurred in the North Sea and mid-Atlantic with the latest peak time occurring in an area off Iceland's south coast. South of 40°N we found that peak timing was expected to occur marginally earlier in the future. North of 40°N we found an east-west pattern with peak time occurring later along the coast and in the Labrador Sea by an average of 0.2 months (~6 days) and in the mid-Atlantic peak time occurs earlier by an average of 0.35 months (~10 days).

3.5 | Changes in community similarity

Overall, community similarity between the historical and future periods was high, implying that for many regions the change in community structure was not dramatic (Figure 1b). However, for the NW Atlantic shelf and Atlantic subpolar regions, large changes in community structure were projected. The projected changes in Bray–Curtis similarity were linearly related to the projected changes in the environment, particularly SST. The greater the magnitude in temperature change expected the less similar two communities become (Figure 1c). While there was an immediate decline in Bray–Curtis similarity for temperature differences <0°C, there was a plateau in Bray–Curtis similarity for temperature increases up to 1.7°C. The patterns in Bray–Curtis similarity were reflected in the patterns of species richness change with significant loss (~48%) experienced in the subpolar region and increases >50% in species richness of the NW Atlantic Shelf (Figure 1d). While much of the tropical and subtropical areas showed widespread loss of species richness ~10%, areas south of Iceland and in the North Sea showed further areas of significant species richness increase that was not apparent with the Bray–Curtis similarity distribution. Similar patterns were observed for species turnover, with turnover rates of up to 80% found in the same areas with the greatest change in Bray–Curtis similarity (Figure S3).

3.6 | Changes in trait distribution

When comparing between historic and future conditions, the percentage of diapause species increased by almost 20% in the “cold spot” location to the south of Greenland while decreases of 5%–10% are found on both sides of the cold spot increase and centered along the Scotian shelf and off the coast of Norway (Figure 5a,b). Carnivorous copepods showed a basin-wide increase in species number of 8.6% and increased by up to 20% in the subtropical latitudes. Herbivorous copepods showed restricted, regional increases in species numbers with the largest increases shown to occur between Labrador and Greenland (Figure 5c,d). The change in the ratio of the small and large (>2.5 mm) individuals display a similar pattern shown for diapause species with >20% increase in large bodied individuals in the “cold spot” (Figure 5e,f). In the Arctic region while diapause species percentage decreased, the number of large bodied species remained unchanged.

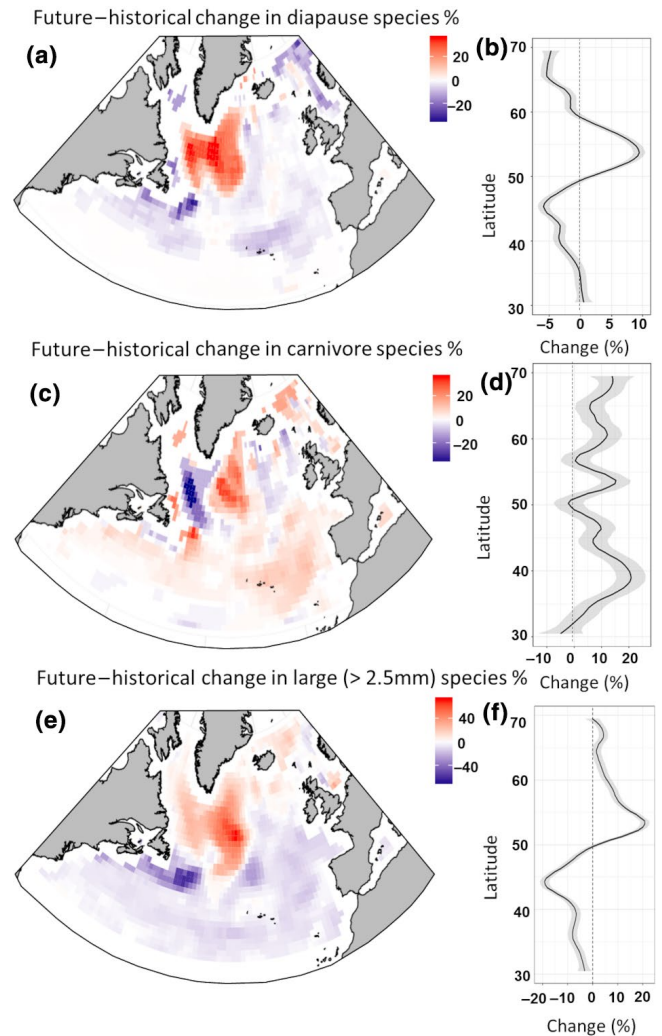


FIGURE 5 The percentage change at each $1 \times 1^\circ$ cell (left column) and the latitudinal average (mean \pm 95% CI) in percent change (right column) for: (a, b) Diapausers, (c, d) Carnivores, and (e, f) Large copepods (>2.5 mm) between the future and historical period. Negative percentage values (blue on the maps) indicate areas that show an increase in the number of non-diapausers (a, b), herbivores (c, d), and smaller sized species (e, f) in the future period [Colour figure can be viewed at wileyonlinelibrary.com]

4 | DISCUSSION

Our analysis demonstrated considerable changes to the North Atlantic copepod community due to projected climate change stemming from a business as usual approach to carbon emissions. Individual species trajectories show predominantly north-eastward movement in their central habitat location with the fastest trajectories displayed by species occupying the midlatitude areas. These changes manifest themselves at the community level with basin-wide shifts in community composition and changes in species diversity and turnover. The implications of the changing biogeographic patterns for ecosystem functioning were explored by combining information on each species functional trait. Diapausing copepods and larger bodied copepods may tend to increase in the Arctic and

sub-Arctic while smaller bodied species will increase across the subtropics. One of the most notable findings is the contrasting responses of carnivorous and herbivorous copepods to the projected poleward shifts in species habitat. We find basin-wide increases in the number of carnivore species within a community, with carnivores increasing in overall habitat area as they move northward while herbivores will notably decrease. The anticipated changes to the oceanic conditions within the next century are expected benefit carnivorous copepods at the expense of herbivores which has the potential to alter trophic links and ecosystem functioning for the North Atlantic.

4.1 | Shifts in species distribution

The rates of zooplankton species shift observed here are broadly similar to the historical poleward shifts observed by Villarino et al. (2015) for 14 copepod species in the North Atlantic (Villarino—8.7 km decade⁻¹; this study—10.8 km decade⁻¹). A comparison between the rates of change in central position measured across both studies shows strong correlation ($r = 0.66$, $p < 0.001$) when the two Arctic species *C. glacialis* and *C. hyperboreus* are removed. The discrepancy is likely in response to a significant cooling in the subpolar gyre region, which is thought to be due to a decline in the overturning circulation of the subpolar gyre (Yang et al., 2016). As a result, we propose that Arctic species may counterintuitively shift southward in response to a potential thermal refuge instead of continuing tracking conditions northward. The historical rate of change for the subarctic species *C. finmarchicus* was found to be moving northward at a rate of up to ~111 km decade⁻¹ (Helouet & Beaugrand, 2009). With the projected cooling expected, our study finds a much less dramatic rate of direction change of -0.37 km decade⁻¹.

Historical changes in zooplankton biogeographies over the last 50–75 years often show much faster rates of change than our results that compare the average historical distribution with a projected distribution derived from the anticipated changes to the marine environment. Collective estimates of marine range shifts observed rates varying between 1.4 and 28 km decade⁻¹ for fish and invertebrates (Cheung et al., 2009) while a meta-analysis of 129 marine species show an average rate of 19 km year⁻¹ (Sorte et al., 2010). Copepods are expected to move northward at a similar rate as phytoplankton. A study of the future changes on the North Atlantic phytoplankton community showed that species move northward at a rate of 12.9 km decade⁻¹ (Barton et al., 2016) which is similar to the 10.8 km decade⁻¹ demonstrated in our study for copepods. However, phytoplankton may move eastward at a faster rate (phytoplankton—42.7 km decade⁻¹; copepods -21.3 km decade⁻¹), possibly leading to increasing mismatches in the distribution of the two groups (Asch et al., 2019). Even the presence of small mismatches between phytoplankton-copepods, in terms of abundance, distribution, or timing can have large effects on ecosystem functioning (Thackeray, 2012). The expected cooling of the subpolar region during this time rapidly slows and in some cases reverses the predictions of rapid poleward movement that has been observed historically.

Other metrics of species movement have been reported for species, such as the distributional ranges of a species distribution known as the leading (or trailing) edge (Poloczanska et al., 2013). These are usually seen as more dynamic with species movements tending to move much faster than the distributional center due to an increased adaptability of individuals at the environmental extremes (Robinson et al., 2015). Several plankton species have shown that individuals at the extreme thermal ranges undergo local adaptation to the environment which may not be representative of the whole population (Sasaki & Dam, 2019) The choice of the distributional center as a metric for species distribution is expected to give a more conservative and robust estimate of any changes to a species biogeography. Nevertheless it is important to acknowledge the broader definitions of a species range as several meta-analytical studies that focused on edge changes are influential and frequently cited (Poloczanska et al., 2013). For example, Poloczanska et al. (2013) found that zooplankton had some of the fastest leading edge expansions of 142.1 km decade⁻¹ which is an order of magnitude larger than any measured changes of the distributional center.

4.2 | Phenology

Regional studies of copepod phenology have demonstrated a consistent shift toward earlier bloom times in response to warming ocean temperatures (Greve et al., 2004; Mackas & Beaugrand, 2010). The change in the distribution and prevalence of diapausing copepods may have an effect on the changes observed in the phenological landscape of the North Atlantic. In our projections, the mean timing of copepod seasonal peaks changes by up to ±0.5 months, appearing later in the higher latitudes and earlier in the subtropics suggesting that it may be too simple to state that copepod phenology shifts earlier in a warming climate. Based on the geographical patterns, the phenological changes appear to integrate elements of the effects based on diapause strategy, diet preference, and body size. Some of the largest temperature increases coincide with species occurring both earlier and later in the season. At ocean basin scales, we find that the link between phenology and the changing environment is obscured due to the regional variability of individual species responses to environmental conditions (McGinty et al., 2011). Modeling studies have shown the importance of diapause timing to the phenology of several species (Maps et al., 2011) which can produce knock-on ecological effects to non-diapause species in the ecosystem such as introducing competition with species that traditionally did not overlap in their timing (Zhang et al., 2007). Temperature niches vary according to dietary preference, so we anticipate temperature changes will have differential effects on the phenology of herbivores and carnivores (McGinty et al., 2018). Phenological changes will likely cascade through trophic levels and create timing mismatches between copepods and developmental stages of several commercially important fish species (Mollman et al., 2005; Staudinger et al., 2019). Our findings suggest that climate-mediated changes in zooplankton phenology may be more complicated than previously imagined

and involved interactions across multiple traits that future research should be investigated further.

4.3 | Changes in community similarity and trait distribution

We identify several key areas where the greatest change in the communities is likely to occur. As the results are not sensitive to changes to abundance, the results emphasize areas where a high number of species have gained or lost their fundamental habitat niche. The greatest change in Bray–Curtis similarity tends to occur in areas with the greatest environmental change, however, changes in species diversity reveal a more varied pattern of change across the whole North Atlantic. When viewed in the context of the underlying environment conditions we find that these changes occur when mean ocean temperatures vary around 9°C–12°C. This has been identified a critical thermal boundary for copepods in the North Atlantic and is identified as transitional region between temperate and sub-Arctic biomes (Beaugrand et al., 2008; Beaugrand & Kirby, 2018).

Model projections anticipate that body sizes will shrink among lower trophic level groups (Cheung et al., 2013), particularly in the mid-latitude regions, but with little change in the Arctic (Lefort et al., 2015). Similarly, this phenomenon has also been detected in field studies (Daufresne et al., 2009). Our results suggest that larger species will be lost at the expense of the smaller sized species, particularly in the tropical and subtropical areas. However, between 50° and 60°N there is an increase in the presence of large-sized species in the subpolar region where significant cooling is expected. Increasing temperatures impose greater metabolic demands on an individual with greater pressure placed on larger individuals to increase energy intake to maintain a suitable basal or active metabolic rate (Claireaux & Lefrancois, 2007). The community response to increasing temperatures appears to be either a reduction in the overall length (Garzke et al., 2016) or an overall reduction in the larger species from an area. As a result of the warmer temperatures and decreases in the larger species, there is the potential to alter the food web structure and the potential of less energy and carbon transfer between trophic levels (Lewandowska & Sommer, 2010).

We project that as a result of climate-induced changes, the North Atlantic ecosystem will become more favorable to carnivorous copepods in the next century while in contrast the prevalence of herbivorous copepods will diminish. In general we find that the probability of presence of carnivore species will tend to increase among copepod communities throughout much of the North Atlantic with the exception of the cooling region which shows a shift toward further herbivore dominance. Most significantly, we find that the poleward movement in a species biogeographical distribution will lead to increases in the overall habitat area for carnivores and decreases for herbivores. Over larger scales, it has been demonstrated that on average carnivorous copepods tend to have niches that in areas with higher temperatures and lower Chl-*a* biomass in contrast to herbivorous copepods (McGinty et al., 2018). Recent evidence has also shown that despite a decline in

overall copepod abundance in UK shelf waters due to phytoplankton community changes, several carnivorous copepods have been shown to be increasing (Schmidt et al., 2020). Herbivore-dominated copepod communities are typically simpler with more efficient carbon flow between primary productivity to the higher trophic levels (Castellani et al., 2008). Carnivore dominated systems often occur in tropical and oligotrophic regions where trophic interactions are more complex and tend to be dominated by top-down as opposed to bottom-up processes (Hébert et al., 2017). The projected increases in ocean temperature point to a decrease in the appearance of the largest-sized copepod species and an overall shift in the community to copepods with a preferred carnivorous dietary strategy. Together with the shifts in phenology and distribution of diapausing species, there will be significant changes to the functional biogeography of the copepod community within the next century. Combined with a loss in accessible energy through a reduction in the larger lipid-rich species and effective phytoplankton–copepod food web links, the effects of the copepod community restructuring will undoubtedly reverberate throughout the ecosystem with significant knock-on effects to the upper trophic levels.

Marine management policy has been shifting from a sectoral-based to ecosystem-based management system in recent decades and for the Northeast Atlantic, this has been driven largely by initiatives outlined by the Marine Strategy Framework Directive. Plankton have been outlined as important indicators for pelagic ecosystem health due to their rapid responses to changes in climate change and water quality (Garmendia et al., 2013). Indices built on changing ratios of plankton functional types have been implemented for the North Atlantic region that provide simple measures of ecosystem resilience to anthropogenic pressures (McQuatters-Gollop et al., 2019). Our trait based ratios are designed on a similar framework that can be used as indicators of changes in energy flow (dietary strategy) and food web structure (body size) within the pelagic ecosystem.

4.4 | Caveats

We must note that there are limitations and uncertainties with any projection model. We included many potential environmental predictors that will change in the next century while others were omitted. Ocean acidification is likely to be a major threat for several calcifying planktonic organisms (e.g., pelagic gastropods; *Limacina* spp.). Studies on copepods have demonstrated that ocean acidification is expected to be of minor effect relative to temperature change (Garzke et al., 2016) and as a result was not included here.

Studies have repeatedly shown that the prevailing response of copepod communities to changing environmental conditions is to alter their distribution or timing of life-history events in line with these changes. However, some evidence has pointed to the potential for some species to adapt to localized conditions with a rapid genetic response (Dam, 2013). Adaptations of life history traits in response to changing temperatures and thermal extremes have been found for estuarine and coastal copepod species across their geographical ranges (Lonsdale & Levinton, 1985; Willett, 2010).

With regard to more widely distributed species, adaptation to local conditions have been found for isolated populations of *C. helgolandicus* in the Mediterranean (Yebra et al., 2011), however, no variation was found for its congener *C. finmarchicus* across the North Atlantic. Comparing both species in the open ocean, Hinder et al. (2014) found no evidence of thermal adaptation of either species. We assume that while thermal adaptation is possible the more likely results are for zooplankton species to track their thermal niche.

With the changes expected in the distribution of copepod species among the trait groups, it is likely that changing species interactions (i.e., competition, predator–prey relationships) will occur in the future (Pearson & Dawson, 2003). Future studies should attempt to disentangle the effects of competitive interactions in the copepod community. Finally, we note that the CPR survey, while extraordinary in its spatial and temporal extent, takes all its samples from surface waters. As a result, we have only explored the responses in the surface of the ocean and did not consider the potential changes in the vertical distribution or migration behavior of each species in response to changing climate (Pinsky et al., 2013).

5 | CONCLUSIONS

Our results demonstrate that the projected environmental changes in the North Atlantic may lead to profound changes to the copepod community in the latter half of this century with significant geographic shifts expected for most species. We use traits to describe the effects of environmental change across many variables to provide descriptions of the effects of climate change for many species. The analysis of whole communities of copepods and analysis of the response according to three key traits (diapause, dietary strategy, and body size) enable robust estimates about the likely changes in copepod biogeography grounded in known physiological mechanisms. The emphasis on traits enables us to average over many species to gain insights for likely changes in phenology and community composition that form the basis for inferences of the consequences to food webs and biogeochemistry over the next century.

ACKNOWLEDGEMENTS

We thank Charles Stock and Jessica Luo from the National Oceanic and Atmospheric Administration's (NOAA) Geophysical Fluid Dynamics Laboratory for the ESM2G data. We also thank David Johns of the Sir Alister Hardy Foundation for Ocean Science (SAHFOS) for initially providing Continuous Plankton Recorder data and also for his personal contribution to the manuscript. N.M.G., A.J.I., and Z.V.F. were supported by the Simons Collaboration on Computational Biogeochemical Modeling of Marine Ecosystems (CBIOMES; grant ID: 549935 Irwin/Dal). N.R.R. was supported by NASA grant no. NNX16AG59G. A.D.B. was supported by the Simons Foundation.

DATA AVAILABILITY STATEMENT

The data that support the findings of this study are available from the corresponding author upon reasonable request.

ORCID

Niall McGinty  <https://orcid.org/0000-0002-2505-2531>

REFERENCES

- Asch, R. G., Stock, C. A., & Sarmiento, J. L. (2019). Climate change impacts on mismatches between phytoplankton blooms and fish spawning phenology. *Global Change Biology*, 25(8), 2544–2559. <https://doi.org/10.1111/gcb.14650>
- Barton, A. D., Irwin, A. J., Finkel, Z. V., & Stock, C. A. (2016). Anthropogenic climate change drives shift and shuffle in North Atlantic phytoplankton communities. *Proceedings of the National Academy of Sciences of the United States of America*, 113(11), 2964–2969. <https://doi.org/10.1073/pnas.1519080113>
- Barton, A. D., Pershing, A. J., Litchman, E., Record, N. R., Edwards, K. F., Finkel, Z. V., Kiørboe, T., & Ward, B. A. (2013). The biogeography of marine plankton traits. *Ecology Letters*, 16(4), 522–534.
- Beaugrand, G., Brander, K. M., Lindley, J. A., Souissi, S., & Reid, P. C. (2003). Plankton effect on cod recruitment in the North Sea. *Nature*, 426, 661–664. <https://doi.org/10.1038/nature02164>
- Beaugrand, G., Edwards, M., Brander, K., Luczak, C., & Ibanez, F. (2008). Causes and projections of abrupt climate-driven ecosystem shifts in the North Atlantic. *Ecology Letters*, 11(11), 1157–1168. <https://doi.org/10.1111/j.1461-0248.2008.01218.x>
- Beaugrand, G., & Kirby, R. R. (2010). Climate, plankton and cod. *Global Change Biology*, 16, 1268–1280. <https://doi.org/10.1111/j.1365-2486.2009.02063.x>
- Beaugrand, G., & Kirby, R. R. (2018). How do marine pelagic species respond to climate change? Theories and observations. *Annual Review of Marine Science*, 10, 169–197. <https://doi.org/10.1146/annurev-marine-121916-063304>
- Bedford, J., Ostle, C., Johns, D. G., Atkinson, A., Best, M., Bresnan, E., Machairopoulou, M., Graves, C. A., Devlin, M., Milligan, A., Pitois, S., Mellor, A., Tett, P., & McQuatters-Gollop, A. (2020). Lifelong indicators reveal large-scale shifts in plankton across the North-West European shelf. *Global Change Biology*, 26(6), 3482–3497. <https://doi.org/10.1111/gcb.15066>
- Benedetti, F., Gasparini, S., & Ayata, S. D. (2016). Identifying copepod functional groups from species functional traits. *Journal of Plankton Research*, 38(1), 159–166. <https://doi.org/10.1093/plankt/fbv096>
- Benedetti, F., Vogt, M., Righetti, D., Guilhaumon, F., & Ayata, S. D. (2018). Do functional groups of planktonic copepods differ in their ecological niches? *Journal of Biogeography*, 45(3), 604–616. <https://doi.org/10.1111/jbi.13166>
- Bopp, L., Resplandy, L., Orr, J. C., Doney, S. C., Dunne, J. P., Gehlen, M., Halloran, P., Heinze, C., Ilyina, T., Séférian, R., Tjiputra, J., & Vichi, M. (2013). Multiple stressors of ocean ecosystems in the 21st century: Projections with CMIP5 models. *Biogeosciences*, 10, 6225–6245. <https://doi.org/10.5194/bg-10-6225-2013>
- Boulangeat, I., Gravel, D., & Thuiller, W. (2012). Accounting for dispersal and biotic interactions to disentangle the drivers of species distributions and their abundances. *Ecology Letters*, 15(6), 584–593. <https://doi.org/10.1111/j.1461-0248.2012.01772.x>
- Brun, P., Payne, M. R., & Kiørboe, T. (2016). Trait biogeography of marine copepods – An analysis across scales. *Ecology Letters*, 19(12), 1403–1413. <https://doi.org/10.1111/ele.12688>
- Brun, P. G., Payne, M., & Kiørboe, T. (2017). A trait database for marine copepods. *Earth System Science Data*, 9(1), 99–113. <https://doi.org/10.5194/essd-9-99-2017>
- Brun, P., Vogt, M., Payne, M. R., Gruber, N., O'Brien, C. J., Buitenhuis, E. T., Le Quééré, C., Leblanc, K., & Luo, Y.-W. (2015). Ecological niches of open ocean phytoplankton taxa. *Limnology and Oceanography*, 60(3), 1020–1038. <https://doi.org/10.1002/lno.10074>
- Castellani, C., Irigoien, X., Mayor, D. J., Harris, R. P., & Wilson, D. (2008). Feeding of *Calanus finmarchicus* and *Oithona similis* on microplankton

- assemblage in the Irminger Sea, North Atlantic. *Journal of Plankton Research*, 30, 1095–1116. <https://doi.org/10.1093/plankt/fbn074>
- Chase, J. M., & Leibold, M. A. (2003). *Ecological niches: Linking classical and contemporary approaches*. University of Chicago Press.
- Cheung, W. W. L., Lam, V. W. Y., Sarmiento, J. L., Kearney, K., Watson, R., & Pauly, D. (2009). Projecting global marine biodiversity impacts under climate change scenarios. *Fish and Fisheries*, 10, 235–251. <https://doi.org/10.1111/j.1467-2979.2008.00315.x>
- Cheung, W. W., Sarmiento, J. L., Dunne, J., Frölicher, T. L., Lam, V. W., Palomares, M. D., Watson, R., & Pauly, D. (2013). Shrinking of fishes exacerbates impacts of global ocean changes on marine ecosystems. *Nature Climate Change*, 3(3), 254–258. <https://doi.org/10.1038/nclimate1691>
- Claireaux, G., & Lefrançois, C. (2007). Linking environmental variability and fish performance: Integration through the concept of scope for activity. *Philosophical Transactions of the Royal Society B: Biological Sciences*, 362(1487), 2031–2041.
- Curry, R., Dickson, B., & Yashayaev, I. (2003). A change in the freshwater balance of the Atlantic Ocean over the past four decades. *Nature*, 426(6968), 826–829. <https://doi.org/10.1038/nature02206>
- Dam, H. G. (2013). Evolutionary adaptation of marine zooplankton to global change. *Annual Review of Marine Science*, 5, 349–370. <https://doi.org/10.1146/annurev-marine-121211-172229>
- Daufresne, M., Lengfellner, K., & Sommer, U. (2009). Global warming benefits the small in aquatic ecosystems. *Proceedings of the National Academy of Science of the United State of America*, 106, 12788–12793. <https://doi.org/10.1073/pnas.0902080106>
- Dunne, J. P., John, J. G., Adcroft, A. J., Griffies, S. M., Hallberg, R. W., Shevliakova, E., Stouffer, R. J., Cooke, W., Dunne, K. A., Harrison, M. J., & Krasting, J. P. (2012). GFDL's ESM2 global coupled climate-carbon earth system models. Part I: Physical formulation and baseline simulation characteristics. *Journal of Climate*, 25(19), 6646–6665. <https://doi.org/10.1175/jcli-d-11-00560.1>
- Edwards, M., & Richardson, A. J. (2004). Impact of climate change on marine pelagic phenology and trophic mismatch. *Nature*, 430(7002), 881–884. <https://doi.org/10.1038/nature02808>
- Elith, J., H. Graham, C., P. Anderson, R., Dudík, M., Ferrier, S., Guisan, A., J. Hijmans, R., Huettmann, F., R. Leathwick, J., Lehmann, A., Li, J., G. Lohmann, L., A. Loiselle, B., Manion, G., Moritz, C., Nakamura, M., Nakazawa, Y., McC. M. Overton, J., Townsend Peterson, A., ... E. Zimmermann, N. (2006). Novel methods improve prediction of species' distributions from occurrence data. *Ecography*, 29(2), 129–151. <https://doi.org/10.1111/j.2006.0906-7590.04596.x>
- Elith, J., & Leathwick, J. R. (2009). Species distribution models: Ecological explanation and prediction across space and time. *Annual Review of Ecology, Evolution, and Systematics*, 40, 677–697. <https://doi.org/10.1146/annurev.ecolsys.110308.120159>
- Evans, L. E., Hirst, A. G., Kratina, P., & Beaugrand, G. (2020). Temperature-mediated changes in zooplankton body size: Large scale temporal and spatial analysis. *Ecography*, 43(4), 581–590.
- Garmendia, M., Borja, Á., Franco, J., & Revilla, M. (2013). Phytoplankton composition indicators for the assessment of eutrophication in marine waters: Present state and challenges within the European directives. *Marine Pollution Bulletin*, 66(1–2), 7–16. <https://doi.org/10.1016/j.marpolbul.2012.10.005>
- Garzke, J., Hansen, T., Ismar, S. M., & Sommer, U. (2016). Combined effects of ocean warming and acidification on copepod abundance, body size and fatty acid content. *PLoS One*, 11(5), e0155952. <https://doi.org/10.1371/journal.pone.0155952>
- Greve, W., Reinert, F., Nast, J., & Hoffmann, S. (2004). Helgoland Roads meso- and macrozooplankton time-series 1974 to 2004: Lessons from 30 years of single spot, high frequency sampling at the only off-shore island of the North Sea. *Helgoland Marine Research*, 58(4), 274–288. <https://doi.org/10.1007/s10152-004-0191-5>
- Hall, J. K. (2006). GEBCO centennial special issue – Charting the secret world of the ocean floor: The GEBCO Project 1903–2003. *Marine Geophysical Researches*, 27(1), 1–5. <https://doi.org/10.1007/s11001-006-8181-4>
- Hays, G. C. (2003). A review of the adaptive significance and ecosystem consequences of zooplankton diel vertical migrations. *Migrations and dispersal of marine organisms* (pp. 163–170). Springer.
- Hazen, E. L., Jorgensen, S., Rykaczewski, R. R., Bograd, S. J., Foley, D. G., Jonsen, I. D., Shaffer, S. A., Dunne, J. P., Costa, D. P., Crowder, L. B., & Block, B. A. (2013). Predicted habitat shifts of Pacific top predators in a changing climate. *Nature Climate Change*, 3(3), 234–238. <https://doi.org/10.1038/nclimate1686>
- Hébert, M. P., Beisner, B. E., & Maranger, R. (2017). Linking zooplankton communities to ecosystem functioning: Toward an effect-trait framework. *Journal of Plankton Research*, 39, 3–12. <https://doi.org/10.1093/plankt/fbw068>
- Helaouët, P., & Beaugrand, G. (2009). Physiology, ecological niches and species distribution. *Ecosystems*, 12(8), 1235–1245. <https://doi.org/10.1007/s10021-009-9261-5>
- Hinder, S. L., Gravenor, M. B., Edwards, M., Ostle, C., Bodger, O. G., Lee, P. L., Walne, A. W., & Hays, G. C. (2014). Multi-decadal range changes vs. thermal adaptation for north east Atlantic oceanic copepods in the face of climate change. *Global Change Biology*, 20(1), 140–146. <https://doi.org/10.1111/gcb.12387>
- Hosie, G. W., Fukuchi, M., & Kawaguchi, S. (2003). Development of the Southern Ocean continuous plankton recorder survey. *Progress in Oceanography*, 58(2–4), 263–283. <https://doi.org/10.1016/j.pcean.2003.08.007>
- Irwin, A. J., Nelles, A. M., & Finkel, Z. V. (2012). Phytoplankton niches estimated from field data. *Limnology and Oceanography*, 57(3), 787–797. <https://doi.org/10.4319/lo.2012.57.3.0787>
- Jónasdóttir, S. H., Wilson, R. J., Gislason, A., & Heath, M. R. (2019). Lipid content in overwintering *Calanus finmarchicus* across the subpolar eastern North Atlantic Ocean. *Limnology and Oceanography*, 64(5), 2029–2043. <https://doi.org/10.1002/lno.11167>
- Keister, J. E., Di Lorenzo, E., Morgan, C. A., Combes, V., & Peterson, W. T. (2011). Zooplankton species composition is linked to ocean transport in the Northern California Current. *Global Change Biology*, 17(7), 2498–2511. <https://doi.org/10.1111/j.1365-2486.2010.02383.x>
- Lefort, S., Aumont, O., Bopp, L., Arsouze, T., Gehlen, M., & Maury, O. (2015). Spatial and body-size dependent response of marine pelagic communities to projected global climate change. *Global Change Biology*, 21(1), 154–164. <https://doi.org/10.1111/gcb.12679>
- Lewandowska, A., & Sommer, U. (2010). Climate change and the spring bloom: A mesocosm study on the influence of light and temperature on phytoplankton and mesozooplankton. *Marine Ecology Progress Series*, 405, 101–111.
- Litchman, E., Ohman, M. D., & Kiørboe, T. (2013). Trait-based approaches to zooplankton communities. *Journal of Plankton Research*, 35(3), 473–484.
- Lonsdale, D. J., & Levinton, J. S. (1985). Latitudinal differentiation in copepod growth: An adaptation to temperature. *Ecology*, 66(5), 1397–1407. <https://doi.org/10.2307/1938002>
- Mackas, D. L., & Beaugrand, G. (2010). Comparisons of zooplankton time series. *Journal of Marine Systems*, 79(3–4), 286–304. <https://doi.org/10.1016/j.jmarsys.2008.11.030>
- Maps, F., Runge, J. A., Leising, A., Pershing, A. J., Record, N. R., Plourde, S., & Pierson, J. J. (2011). Modelling the timing and duration of dormancy in populations of *Calanus finmarchicus* from the Northwest Atlantic shelf. *Journal of Plankton Research*, 34(1), 36–54. <https://doi.org/10.1093/plankt/fbr088>
- McGinty, N., Barton, A. D., Record, N. R., Finkel, Z. V., & Irwin, A. J. (2018). Traits structure copepod niches in the North Atlantic and Southern Ocean. *Marine Ecology Progress Series*, 601, 109–126. <https://doi.org/10.3354/meps12660>
- McGinty, N., Power, A. M., & Johnson, M. P. (2011). Variation among northeast Atlantic regions in the responses of zooplankton to

- climate change: Not all areas follow the same path. *Journal of Experimental Marine Biology and Ecology*, 400(1–2), 120–131. <https://doi.org/10.1016/j.jembe.2011.02.013>
- McQuatters-Gollop, A., Atkinson, A., Aubert, A., Bedford, J., Best, M., Bresnan, E., Cook, K., Devlin, M., Gowen, R., Johns, D. G., Machairopoulou, M., McKinney, A., Mellor, A., Ostle, C., Scherer, C., & Tett, P. (2019). Plankton lifeforms as a biodiversity indicator for regional-scale assessment of pelagic habitats for policy. *Ecological Indicators*, 101, 913–925. <https://doi.org/10.1016/j.ecolind.2019.02.010>
- McQuatters-Gollop, A., Edwards, M., Helaouët, P., Johns, D. G., Owens, N. J., Raitos, D. E., Schroeder, D., Skinner, J., & Stern, R. F. (2015). The Continuous Plankton Recorder survey: How can long-term phytoplankton datasets contribute to the assessment of Good Environmental Status?. *Estuarine, Coastal and Shelf Science*, 162, 88–97.
- Möllmann, C., Kornilovs, G., Fetter, M., & Köster, F. W. (2005). Climate, zooplankton, and pelagic fish growth in the central Baltic Sea. *ICES Journal of Marine Science*, 62(7), 1270–1280. <https://doi.org/10.1016/j.icesjms.2005.04.021>
- Olsen, E. M., Ottersen, G., Llope, M., Chan, K. S., Beaugrand, G., & Stenseth, N. C. (2011). Spawning stock and recruitment in North Sea cod shaped by food and climate. *Proceedings of the Royal Society B: Biological Sciences*, 278(1705), 504–510. <https://doi.org/10.1098/rspb.2010.1465>
- Pearson, R. G., & Dawson, T. P. (2003). Predicting the impacts of climate change on the distribution of species: Are bioclimate envelope models useful? *Global Ecology and Biogeography*, 12(5), 361–371. <https://doi.org/10.1046/j.1466-822X.2003.00042.x>
- Pinsky, M. L., Worm, B., Fogarty, M. J., Sarmiento, J. L., & Levin, S. A. (2013). Marine taxa track local climate velocities. *Science*, 341(6151), 1239–1242. <https://doi.org/10.1126/science.1239352>
- Poloczanska, E. S., Brown, C. J., Sydeman, W. J., Kiessling, W., Schoeman, D. S., Moore, P. J., Brander, K., Bruno, J. F., Buckley, L. B., Burrows, M. T., Duarte, C. M., Halpern, B. S., Holding, J., Kappel, C. V., O'Connor, M. I., Pandolfi, J. M., Parmesan, C., Schwing, F., Thompson, S. A., & Richardson, A. J. (2013). Global imprint of climate change on marine life. *Nature Climate Change*, 3(10), 919–925. <https://doi.org/10.1038/nclimate1958>
- Prowe, A. F., Visser, A. W., Andersen, K. H., Chiba, S., & Kiørboe, T. (2019). Biogeography of zooplankton feeding strategy. *Limnology and Oceanography*, 64(2), 661–678. <https://doi.org/10.1002/lno.11067>
- Record, N. R., Ji, R., Maps, F., Varpe, Ø., Runge, J. A., Petrik, C. M., & Johns, D. (2018). Copepod diapause and the biogeography of the marine lipid landscape. *Journal of Biogeography*, 45(10), 2238–2251. <https://doi.org/10.1111/jbi.13414>
- Record, N., Runge, J., Pendleton, D., Balch, W., Davies, K., Pershing, A., Johnson, C., Stamieszkin, K., Ji, R., Feng, Z., Kraus, S., Kenney, R., Hudak, C., Mayo, C., Chen, C., Salisbury, J., & Thompson, C. (2019). Rapid climate-driven circulation changes threaten conservation of endangered North Atlantic right whales. *Oceanography*, 32(2), 162–169. <https://doi.org/10.5670/oceanog.2019.201>
- Richardson, A. J. (2008). In hot water: Zooplankton and climate change. *ICES Journal of Marine Science*, 65(3), 279–295.
- Richardson, A. J., Walne, A. W., John, A. W. G., Jonas, T. D., Lindley, J. A., Sims, D. W., Stevens, D., & Witt, M. (2006). Using continuous plankton recorder data. *Progress in Oceanography*, 68(1), 27–74. <https://doi.org/10.1016/j.pocean.2005.09.011>
- Robinson, L. M., Hobday, A. J., Possingham, H. P., & Richardson, A. J. (2015). Trailing edges projected to move faster than leading edges for large pelagic fish habitats under climate change. *Deep Sea Research Part II: Topical Studies in Oceanography*, 113, 225–234. <https://doi.org/10.1016/j.dsr2.2014.04.007>
- Sasaki, M. C., & Dam, H. G. (2019). Integrating patterns of thermal tolerance and phenotypic plasticity with population genetics to improve understanding of vulnerability to warming in a widespread copepod. *Global Change Biology*, 25(12), 4147–4164.
- Schmidt, K., Birchill, A. J., Atkinson, A., Brewin, R. J. W., Clark, J. R., Hickman, A. E., Johns, D. G., Lohan, M. C., Milne, A., Pardo, S., Polimene, L., Smyth, T. J., Tarran, G. A., Widdicombe, C. E., Woodward, E. M. S., & Ussher, S. J. (2020). Increasing picocyanobacteria success in shelf waters contributes to long-term food web degradation. *Global Change Biology*, 26(10), 5574–5587. <https://doi.org/10.1111/gcb.15161>
- Sorte, C. J. B., Williams, S. L., & Carlton, J. T. (2010). Marine range shifts and species introductions: Comparative spread rates and community impacts. *Global Ecology and Biogeography*, 19, 303–316. <https://doi.org/10.1111/j.1466-8238.2009.00519.x>
- Staudinger, M. D., Mills, K. E., Stamieszkin, K., Record, N. R., Hudak, C. A., Allyn, A., Diamond, A., Friedland, K. D., Golet, W., Henderson, M. E., Hernandez, C. M., Huntington, T. G., Ji, R., Johnson, C. L., Johnson, D. S., Jordaan, A., Kocik, J., Li, Y., Liebman, M., ... Yakola, K. (2019). It's about time: A synthesis of changing phenology in the Gulf of Maine ecosystem. *Fisheries Oceanography*, 28(5), 532–566. <https://doi.org/10.1111/fog.12429>
- Steinberg, D. K., & Landry, M. R. (2017). Zooplankton and the ocean carbon cycle. *Annual Review of Marine Science*, 9, 413–444.
- Thackeray, S. J. (2012). Mismatch revisited: What is trophic mismatching from the perspective of the plankton? *Journal of Plankton Research*, 34(12), 1001–1010. <https://doi.org/10.1093/plankt/fbs066>
- Thomas, M. K., Kremer, C. T., Klausmeier, C. A., & Litchman, E. (2012). A global pattern of thermal adaptation in marine phytoplankton. *Science*, 338, 1085–1089. <https://doi.org/10.1126/science.1224836>
- Thuiller, W., Lafourcade, B., Engler, R., & Araújo, M. B. (2009). BIOMOD – A platform for ensemble forecasting of species distributions. *Ecography*, 32(3), 369–373. <https://doi.org/10.1111/j.1600-0587.2008.05742.x>
- Villarino, E., Chust, G., Licandro, P., Butenschön, M., Ibaibarriaga, L., Larrañaga, A., & Irigoien, X. (2015). Modelling the future biogeography of North Atlantic zooplankton communities in response to climate change. *Marine Ecology Progress Series*, 531, 121–142. <https://doi.org/10.3354/meps11299>
- Willett, C. S. (2010). Potential fitness trade-offs for thermal tolerance in the intertidal copepod *Tigriopus californicus*. *Evolution*, 64(9), 2521–2534. <https://doi.org/10.1111/j.1558-5646.2010.01008.x>
- Yang, Q., Dixon, T. H., Myers, P. G., Bonin, J., Chambers, D., Van Den Broeke, M. R., Ribergaard, M. H., & Mortensen, J. (2016). Recent increases in Arctic freshwater flux affects Labrador Sea convection and Atlantic overturning circulation. *Nature Communications*, 7, 10525. <https://doi.org/10.1038/ncomms10525>
- Yebra, L., Bonnet, D., Harris, R. P., Lindeque, P. K., & Peijnenburg, K. T. (2011). Barriers in the pelagic: Population structuring of *Calanus helgolandicus* and *C. euxinus* in European waters. *Marine Ecology Progress Series*, 428, 135–149. <https://doi.org/10.3354/meps09056>
- Zhang, X., Tarpley, D., & Sullivan, J. T. (2007). Diverse responses of vegetation phenology to a warming climate. *Geophysical Research Letters*, 34(19), L19405.

SUPPORTING INFORMATION

Additional supporting information may be found online in the Supporting Information section.

How to cite this article: McGinty N, Barton AD, Record NR, et al. Anthropogenic climate change impacts on copepod trait biogeography. *Glob Change Biol*. 2021;27:1431–1442. <https://doi.org/10.1111/gcb.15499>