

# Kansas Agricultural Experiment Station Research Reports

---

Volume 7  
Issue 5 *Kansas Field Research*

Article 12

---

2021

## On-Farm Assessment of AquaSpy Soil Moisture Sensors for Irrigation Scheduling

P. Rossini  
*Kansas State University*, [prossini@ksu.edu](mailto:prossini@ksu.edu)

A. Patrignani  
*Kansas State University*, [andrespatrignani@ksu.edu](mailto:andrespatrignani@ksu.edu)

Follow this and additional works at: <https://newprairiepress.org/kaesrr>

 Part of the [Agronomy and Crop Sciences Commons](#)

---

### Recommended Citation

Rossini, P. and Patrignani, A. (2021) "On-Farm Assessment of AquaSpy Soil Moisture Sensors for Irrigation Scheduling," *Kansas Agricultural Experiment Station Research Reports*: Vol. 7: Iss. 5. <https://doi.org/10.4148/2378-5977.8082>

This report is brought to you for free and open access by New Prairie Press. It has been accepted for inclusion in Kansas Agricultural Experiment Station Research Reports by an authorized administrator of New Prairie Press. Copyright 2021 Kansas State University Agricultural Experiment Station and Cooperative Extension Service. Contents of this publication may be freely reproduced for educational purposes. All other rights reserved. Brand names appearing in this publication are for product identification purposes only. No endorsement is intended, nor is criticism implied of similar products not mentioned. K-State Research and Extension is an equal opportunity provider and employer.



---

# On-Farm Assessment of AquaSpy Soil Moisture Sensors for Irrigation Scheduling

## Abstract

The aim of this study was to compare a commercially-available radio-frequency (RF) spectroscopy soil moisture sensor with an array of calibrated research-grade soil water reflectometers in a no-till irrigated corn field from June to September 2020. The RF probe consisted of 12 sensors spaced at 4-inch intervals across 48 inches in length, while the array of soil water reflectometers consisted of four sensors deployed along the soil profile at 4, 12, 20, and 28 in. depth. Soil moisture sensors were installed at approximately 30-ft apart in two different regions within the same field characterized by contrasting soil textural classes. Hourly soil moisture and soil temperature were collected by both sensors and compared across the study period. The RF probe closely followed the soil moisture dynamics captured by the research-grade sensors. Preliminary results reveal that the tested RF sensor is useful for irrigation scheduling based on relative soil moisture values. Field-specific calibrations are required to translate the relative soil moisture measurements of the RF sensor into soil water storage in terms of volumetric water content or inches of water in the soil profile.

## Keywords

Soil moisture sensor, irrigation scheduling, on-farm research

## Creative Commons License



This work is licensed under a [Creative Commons Attribution 4.0 License](https://creativecommons.org/licenses/by/4.0/).

# On-Farm Assessment of AquaSpy Soil Moisture Sensors for Irrigation Scheduling

*P. Rossini and A. Patrignani*

## Summary

The aim of this study was to compare a commercially-available radio-frequency (RF) spectroscopy soil moisture sensor with an array of calibrated research-grade soil water reflectometers in a no-till irrigated corn field from June to September 2020. The RF probe consisted of 12 sensors spaced at 4-inch intervals across 48 inches in length, while the array of soil water reflectometers consisted of four sensors deployed along the soil profile at 4, 12, 20, and 28 in. depth. Soil moisture sensors were installed at approximately 30-ft apart in two different regions within the same field characterized by contrasting soil textural classes. Hourly soil moisture and soil temperature were collected by both sensors and compared across the study period. The RF probe closely followed the soil moisture dynamics captured by the research-grade sensors. Preliminary results reveal that the tested RF sensor is useful for irrigation scheduling based on relative soil moisture values. Field-specific calibrations are required to translate the relative soil moisture measurements of the RF sensor into soil water storage in terms of volumetric water content or inches of water in the soil profile.

## Introduction

In-situ soil moisture sensors provide farmers and water managers with field-specific and timely information to guide irrigation scheduling. Accurate observations of rootzone soil water are essential to quantify the amount of plant available water in the soil profile and determine the amount of irrigation needed to prevent plant water stress and the consequent decline in crop yield and/or quality (Evetts et al., 2011). Previous research studies have shown that point-level soil moisture sensors can result in up to 50% irrigation water savings compared to fields without sensors (Hassanli et al., 2009), while still maintaining crop yield and profitability (Evans et al., 2013; Kukul et al., 2020). Several commercially-available point-level soil moisture sensors work based on the principles of time domain reflectometry (TDR), frequency domain reflectometry (FDR), and capacitance. All these methods rely on the radically different dielectric permittivity of water (approximately 80) compared to that of the dry mineral soil (about 2–3). Among these three technologies, capacitance is well-known for being affected by bulk electrical conductivity and soil temperature, to the extent that capacitance sensors may not provide the accuracy required for irrigation scheduling (Evetts et al., 2011). In this study we investigated a new sensor based on radio-frequency spectroscopy widely used by producers in Kansas called AquaSpy (AquaSpy Inc., San Diego, CA) that has the potential to accurately measure rootzone soil moisture. The goal of this study was to compare the AquaSpy profile-level soil moisture sensor against an array of calibrated research-grade soil water reflectometers.

## Procedures

The study was conducted in an irrigated no-till corn field of 54 acres located within the Flickner Innovation Farm near Moundridge, KS, from June to September 2020. Co-located sensors were installed in two different portions of the field. A set of CS655 and AquaSpy sensors were installed in a region characterized by well-drained silt clay loam soils mapped as Crete soil series with <1% slopes, and the second pair of co-located sensors was installed in a region of the field characterized by sandy loam soils (sand 46% with fine gravel) mapped as Farnum soil series with slopes ranging from 1 to 3% (Figure 1A).

In this on-farm study we conducted a preliminary study of AquaSpy probes featuring 12 sensors spaced at 4-inch intervals across 48 inches in length that were specifically designed to cover the rootzone of common agricultural crops (Figure 1B). This sensor works based on radio-frequency spectroscopy attenuation to measure soil moisture. The AquaSpy sensor also provides soil temperature and bulk electrical conductivity measurements every 15 minutes. To test the ability of the AquaSpy sensor to capture the soil moisture dynamics in the irrigated field, observations obtained with the AquaSpy probe were compared with an array of four calibrated soil moisture sensors (CS655, Campbell Scientific, Logan, UT) deployed along the soil profile at 4, 12, 20, and 28 in. depth (Figure 1B). AquaSpy sensing depths beyond this point were not considered in the study. The CS655 sensors were deployed at about 30 ft from the capacitance sensor, and recorded hourly soil moisture, soil temperature, and bulk soil electrical conductivity. Because the AquaSpy probe provides relative soil moisture measurements following proprietary algorithms, the comparison of soil moisture dynamics between these two sensors was only performed in relative terms by scaling the average soil moisture in the top 28 inches of the soil profile by the minimum and maximum reading of each sensor during the period of study.

## Results

The AquaSpy probes effectively captured changes in profile soil moisture as a consequence of irrigation and precipitation events, and rootzone soil moisture readings were comparable to those of the array of research-grade soil moisture sensors (Figure 2). In relative terms, the time series of profile-level soil moisture between the sensors was relatively good ( $r^2 = 0.53$ ) for the management zone characterized by fine-textured soil and excellent ( $r^2 = 0.83$ ) in the management zone dominated by coarse-textured soils (Figure 2). In both field management zones, the relative soil moisture dynamics exhibited little bias between sensing technologies. Minor discrepancies in the time series could be attributed to errors in either sensing technology, sensing volume, soil spatial variability, and even slight differences in sensor depths introduced during the installation process. A more rigorous analysis in controlled and standardized conditions would be required to accurately test the actual discrepancy between sensors.

To verify that the sensors were deployed at comparable depths we examined the soil temperature observations for both sensing technologies. As expected, soil temperature observations were not greatly affected by the type of sensor, with an average discrepancy of only 1.6°F in both fine- and coarse-textured soils (Figure 3). Further investigation across the different sensors along the soil profile showed an increased discrepancy in soil temperature at deeper layers in the coarse-textured soil, with differences as large as 4.2°F at 28-inch depth (Table 1). This difference in temperature at depth could be attributed

to small offsets during the installation of either sensor, and to normal variations in the spatial distribution of soil temperature.

Our preliminary analysis suggests that the AquaSpy sensors closely followed the soil moisture dynamics of an array of research-grade soil moisture sensors in terms of relative soil moisture. Relative soil moisture trends can be useful for irrigation scheduling when supported by field observations of crop stress conditions and expert guidance from the manufacturing company to better interpret sensor readings. Producers who make in-season irrigation decisions based on the actual amount of soil water storage expressed in terms of volumetric water content or inches of water in the soil profile would require a site-specific calibration to translate relative soil moisture readings into actual soil water storage.

## References

- Evans, R. G., LaRue, J., Stone, K. C., & King, B. A. (2013). Adoption of site-specific variable rate sprinkler irrigation systems. In *Irrigation Science* (Vol. 31, Issue 4, pp. 871–887). <https://doi.org/10.1007/s00271-012-0365-x>.
- Evetts, S. R., Schwartz, R. C., Mazahreh, N. T., Jitan, M. A., & Shaqir, I. M. (2011). Soil water sensors for irrigation scheduling: Can they deliver a management allowed depletion? *Acta Horticulturae*, 888, 231–238.
- Hassanli, A. M., Ebrahimzadeh, M. A., & Beecham, S. (2009). The effects of irrigation methods with effluent and irrigation scheduling on water use efficiency and corn yields in an arid region. *Agricultural Water Management*, 96(1), 93–99. <https://doi.org/10.1016/j.agwat.2008.07.004>.
- Kukal, M. S., Irmak, S., & Sharma, K. (2020). Development and application of a performance and operational feasibility guide to facilitate adoption of soil moisture sensors. *Sustainability (Switzerland)*, 12(1). <https://doi.org/10.3390/su12010321>.

*Brand names appearing in this publication are for product identification purposes only. No endorsement is intended, nor is criticism implied of similar products not mentioned. Persons using such products assume responsibility for their use in accordance with current label directions of the manufacturer.*

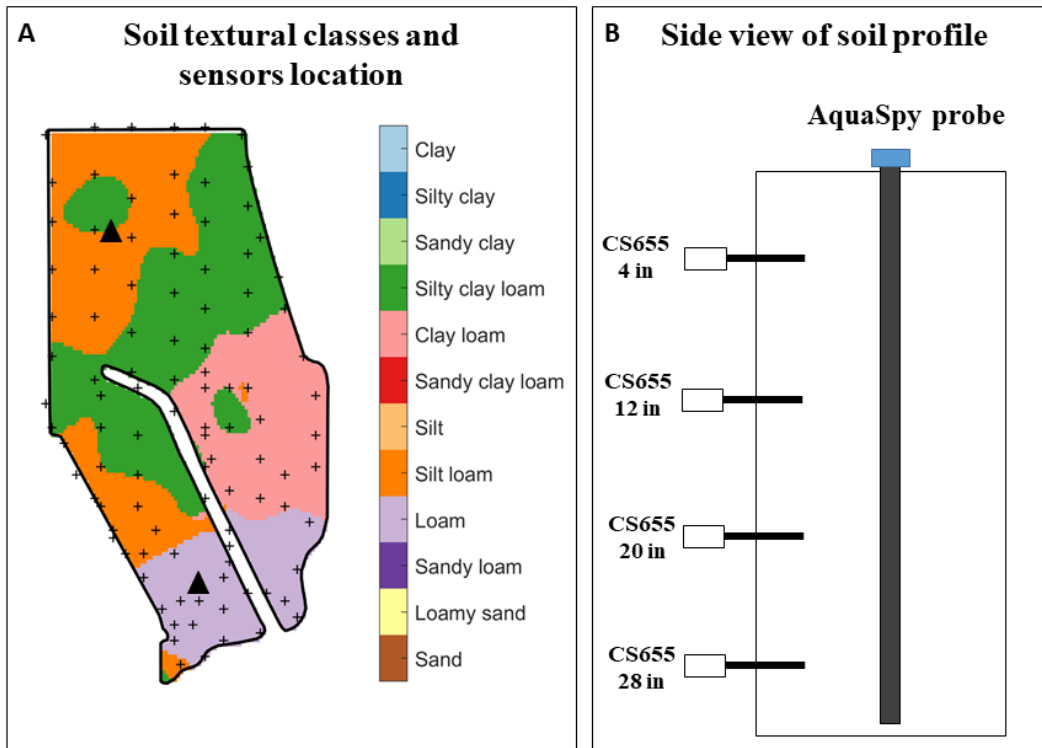
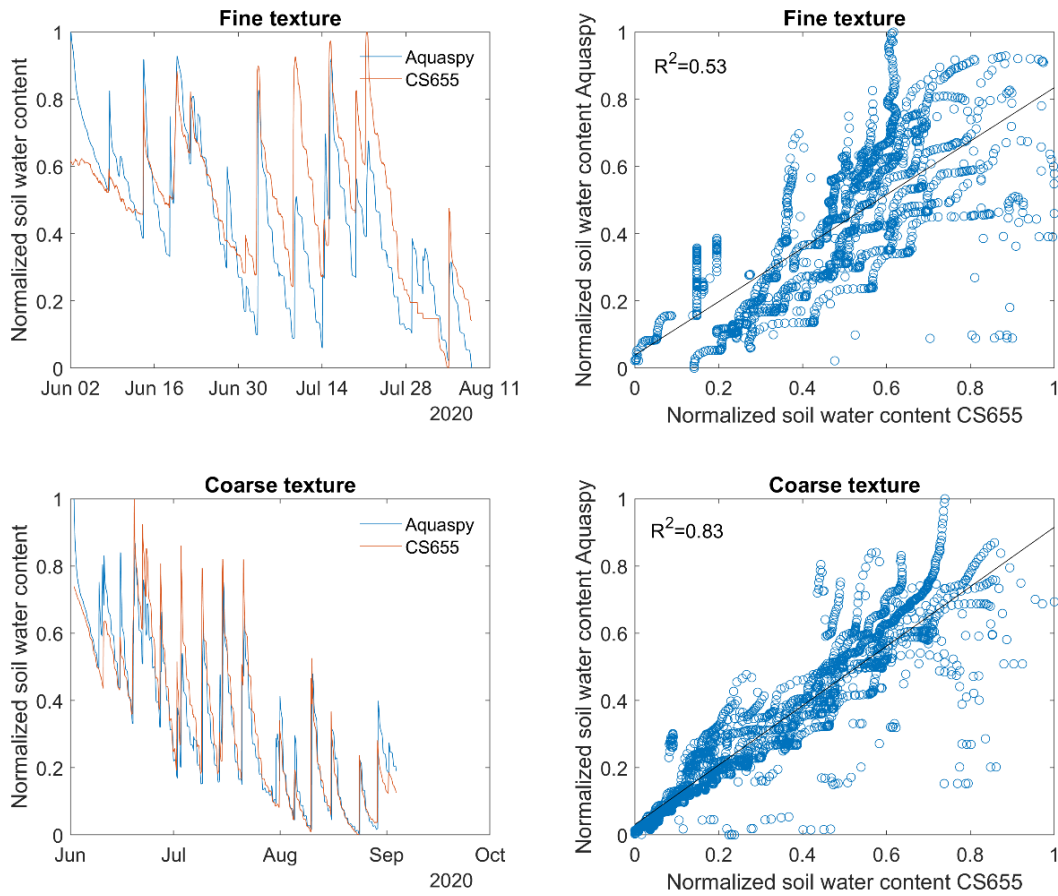
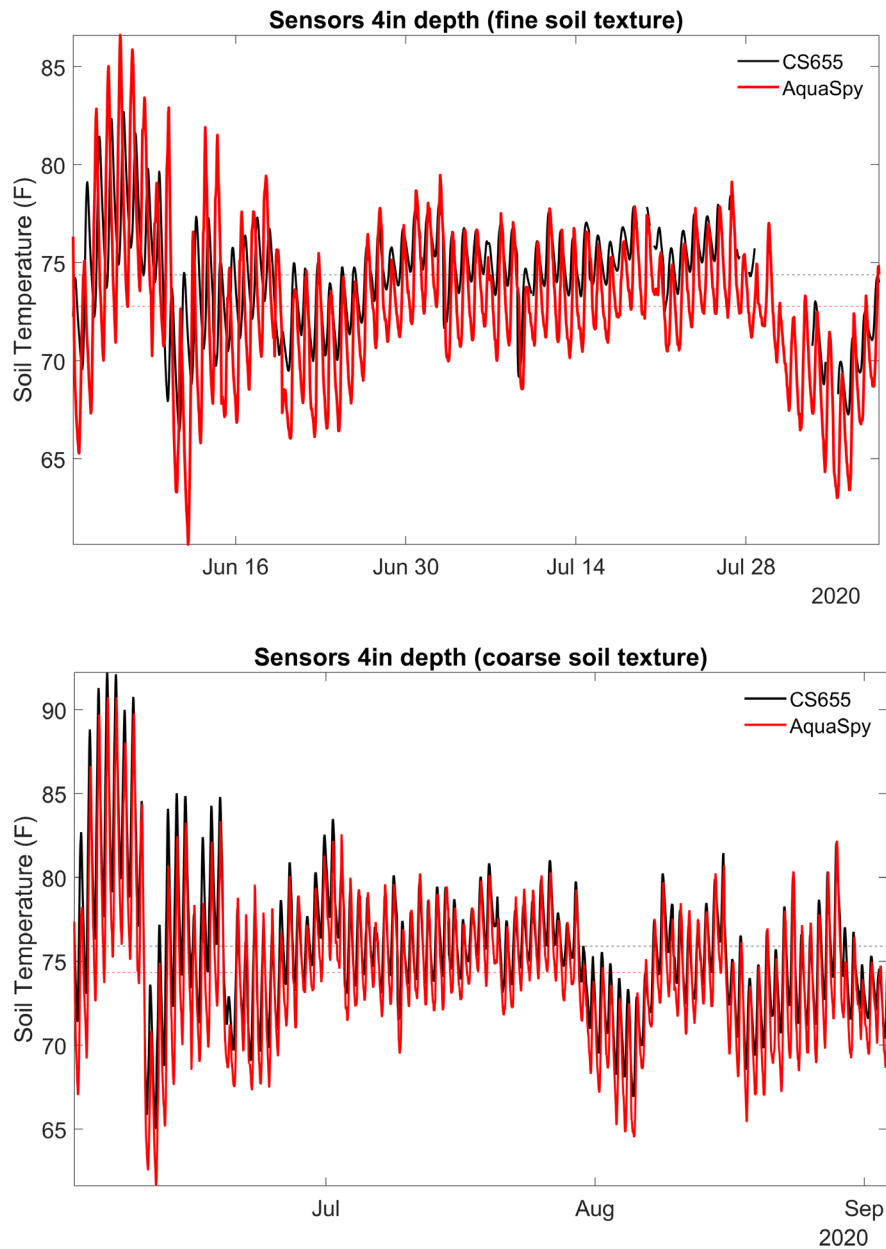


Figure 1. A) Soil textural class of the top 4 inches of the soil profile. Black crosses (+) represent soil sampling locations in which soil texture was determined in the laboratory using the hydrometer method. Solid black triangles represent the locations of the two co-located installations of the AquaSpy and soil water reflectometer sensors. B) Layout of the soil moisture sensors' location across the soil profile. At each location the two different sensors were deployed about 30 ft from each other.



**Figure 2. Comparison of profile (0 to 28 inches) soil water storage determined using the AquaSpy probe (blue line) and an array of four calibrated CS655 soil water reflectometers (red line) in a fine-textured soil (silty clay loam) and a coarse-textured soil (loam, 46% sand).**



**Figure 3. Surface soil temperature at 4-inch depth determined using the AquaSpy probe (red line) and an array of four calibrated CS655 soil water reflectometers (black line) for a fine-textured soil (top) and a coarse-textured soil (bottom). Dashed horizontal lines represent the average profile soil temperature for each sensor over the entire time series.**