


## RESEARCH ARTICLE

## Open Access



# Importance of patient bed pathways and length of stay differences in predicting COVID-19 hospital bed occupancy in England

Quentin J. Leclerc<sup>1\*</sup> , Naomi M. Fuller<sup>1</sup>, Ruth H. Keogh<sup>2</sup>, Karla Diaz-Ordaz<sup>2</sup>, Richard Sekula<sup>3</sup>, Malcolm G. Semple<sup>4</sup>, ISARIC4C Investigators, CMMID COVID-19 Working Group, Katherine E. Atkins<sup>1,5</sup>, Simon R. Procter<sup>1</sup> and Gwenan M. Knight<sup>1</sup>

## Abstract

**Background:** Predicting bed occupancy for hospitalised patients with COVID-19 requires understanding of length of stay (LoS) in particular bed types. LoS can vary depending on the patient's "bed pathway" - the sequence of transfers of individual patients between bed types during a hospital stay. In this study, we characterise these pathways, and their impact on predicted hospital bed occupancy.

**Methods:** We obtained data from University College Hospital (UCH) and the ISARIC4C COVID-19 Clinical Information Network (CO-CIN) on hospitalised patients with COVID-19 who required care in general ward or critical care (CC) beds to determine possible bed pathways and LoS. We developed a discrete-time model to examine the implications of using either bed pathways or only average LoS by bed type to forecast bed occupancy. We compared model-predicted bed occupancy to publicly available bed occupancy data on COVID-19 in England between March and August 2020.

**Results:** In both the UCH and CO-CIN datasets, 82% of hospitalised patients with COVID-19 only received care in general ward beds. We identified four other bed pathways, present in both datasets: "Ward, CC, Ward", "Ward, CC", "CC" and "CC, Ward". Mean LoS varied by bed type, pathway, and dataset, between 1.78 and 13.53 days.

For UCH, we found that using bed pathways improved the accuracy of bed occupancy predictions, while only using an average LoS for each bed type underestimated true bed occupancy. However, using the CO-CIN LoS dataset we were not able to replicate past data on bed occupancy in England, suggesting regional LoS heterogeneities.

**Conclusions:** We identified five bed pathways, with substantial variation in LoS by bed type, pathway, and geography. This might be caused by local differences in patient characteristics, clinical care strategies, or resource availability, and suggests that national LoS averages may not be appropriate for local forecasts of bed occupancy for COVID-19.

\* Correspondence: [quentin.leclerc@lshtm.ac.uk](mailto:quentin.leclerc@lshtm.ac.uk)

<sup>1</sup>Centre for Mathematical Modelling of Infectious Diseases, Department of Infectious Disease Epidemiology, Faculty of Epidemiology & Population Health, London School of Hygiene & Tropical Medicine, London, UK  
Full list of author information is available at the end of the article



© The Author(s). 2021 **Open Access** This article is licensed under a Creative Commons Attribution 4.0 International License, which permits use, sharing, adaptation, distribution and reproduction in any medium or format, as long as you give appropriate credit to the original author(s) and the source, provide a link to the Creative Commons licence, and indicate if changes were made. The images or other third party material in this article are included in the article's Creative Commons licence, unless indicated otherwise in a credit line to the material. If material is not included in the article's Creative Commons licence and your intended use is not permitted by statutory regulation or exceeds the permitted use, you will need to obtain permission directly from the copyright holder. To view a copy of this licence, visit <http://creativecommons.org/licenses/by/4.0/>. The Creative Commons Public Domain Dedication waiver (<http://creativecommons.org/publicdomain/zero/1.0/>) applies to the data made available in this article, unless otherwise stated in a credit line to the data.

**Trial registration:** The ISARIC WHO CCP-UK study [ISRCTN66726260](https://www.isaric.org/clinical-trials/ISRCTN66726260) was retrospectively registered on 21/04/2020 and designated an Urgent Public Health Research Study by NIHR.

**Keywords:** COVID-19, SARS-CoV-2, Hospitalisation, Length of stay, Bed occupancy, Bed pathway

## Background

Patients with Coronavirus disease 2019 (COVID-19) can display a range of symptoms which vary in severity [1], with up to one in five infections requiring hospitalisation, and up to 16% of hospitalised patients requiring intensive care [2, 3]. However, hospital bed capacity is limited; for example, there was only approximately 1 critical care bed per 10,000 inhabitants in England as of February 2020 [4]. If demand for beds exceeds hospital capacity, this would severely decrease the quality of healthcare provided. This would lead to worse outcomes for all patients who require hospitalisation, not only those with COVID-19. Consequently, it is essential to be able to accurately predict demand for hospital beds, both to allow a pre-emptive scale up of capacity and to act as a barometer for the effectiveness of upstream public health measures [5, 6].

To prioritise resource allocation, models that can project bed occupancy are used at the hospital, regional and national level [7–12]. For COVID-19, these models typically use predicted numbers of hospital admissions, and two simplifying assumptions. First, that a patient's hospital stay occurs in only one bed type (e.g. general ward bed or critical care bed), and second, that the stay of each patient lasts for a fixed period. However, these assumptions are now inconsistent with publicly available data showing that many patients occupy different bed types for varying durations of stay [13].

Here, we use both hospital and national level COVID-19 inpatient data to identify the range of “bed pathways”, the sequence of transfers of individual patients between bed types, for a single hospital stay. We then estimate the length of stay (LoS) by bed type for each stage in these pathways. Finally, we develop and apply a model to examine the importance of using these bed pathways for bed occupancy predictions, notably for key indicators such as peak bed and capacity requirements over time.

## Methods

All of the analyses below were conducted in R [14], using the following packages: `openxlsx` [15], `here` [16], `dplyr` [17], `reshape2` [18], `linelist` [19], `ggplot2` [20], `cowplot` [21], `knitr` [22], `rlist` [23] and `mstate` [24]. The code for the bed occupancy model and bed pathways data are available in a GitHub repository ([https://github.com/qlleclerc/COVID\\_bed\\_occupancy](https://github.com/qlleclerc/COVID_bed_occupancy)).

## Patient bed pathways

A bed pathway is the sequence of transfers of individual patients between bed types during a hospital stay. We considered two bed types used in acute care hospitals in England: general ward and critical care (CC) beds. Note that in England, CC beds include both intensive care unit (ICU) beds and high dependency unit (HDU) beds [13], but in other countries “CC beds” and “ICU beds” can be equivalent terms [25]. An example of a pathway in our analysis would be “Ward, CC”, where a patient is admitted first to a ward bed, then transferred to a CC bed, before being discharged or dying.

## UCH

We derived patient bed pathways from two datasets. Our first dataset was provided by University College Hospital (UCH), a teaching hospital that is part of the University College London Hospitals National Health Service (NHS) Foundation Trust, and one of the designated hospitals in London for admission of patients with COVID-19. This first dataset contains date of admission, type of bed used and date of discharge information on 168 inpatients with COVID-19 admitted to UCH between 6th March 2020 and 17th April 2020. All of these patients are now discharged or dead, therefore the LoS from this dataset were uncensored. The patients are not identifiable in this dataset, and are only associated with a number between 1 and 168. If a patient stayed in more than one bed type during their hospitalisation, the dataset includes an admission date, bed type, and discharge date for each stage.

To identify all possible bed pathways, we gathered all recorded stages by patient, and ordered them in chronological order. For each patient, the LoS for each stage was then estimated by taking the difference between the admission date and discharge date, and adding 1 day (such that a patient admitted and discharged on the same day would have an LoS of 1). The data was regrouped by bed pathway, and for each pathway we calculated the number of stages and the proportion of total patients following the pathway. Finally, for each stage in each bed pathway we calculated the mean LoS and standard deviation (s.d.) To compare these estimates with those typically used in bed occupancy models [7–12], we also calculated an “average LoS by bed type”, which is the mean LoS of all stages of that bed type recorded across all pathways. For sensitivity, we also

estimated median LoS and interquartile range for each stage and pathway.

**CO-CIN**

The second dataset was from the ISARIC WHO CCP-UK study (National Institute for Health Research Clinical Research Network Central Portfolio Management System ID: 14152) an ongoing prospective cohort study in England, Scotland, Wales and Northern Ireland [13]. The dataset we used contains information from 208 acute care hospitals. We used a subset of this data, restricted to patients in the COVID-19 Clinical Information Network (CO-CIN). These were patients with proven or high likelihood of SARS-CoV-2 infection admitted to hospital between 11th March 2020 (the date when hospital admission policy in England changed from admitting all known COVID-19 infected to “when necessary”) and 19th July 2020: a total of 42,980 individuals. This dataset covers 80% of all patients with COVID-19 hospitalised in England during this period.

For the CO-CIN dataset, multi-state modelling analyses were used to estimate the time patients spent in each bed type, before transitioning to a different type, as well as time to discharge or in-hospital death [26, 27]. Using this, we estimate LoS for each stage in each possible bed pathway. These models account for competing risks and censoring, as not all patients had complete follow-up, notably because some patients were still hospitalised at the end of the data collection. The number of stages in each bed pathway, and the number of patients following each pathway were also recorded.

This resulted in a set of empiric LoS distributions, one for each stage in each bed pathway. We drew 100,000 samples from each empiric distribution to estimate mean LoS and s.d. for each stage. As with the dataset from UCH, we again calculated an “average LoS by bed type”, which is the mean LoS of all stages of that bed type recorded across all pathways. For sensitivity, we also estimated median LoS and interquartile range for each stage and pathway.

**International**

To obtain an international comparison of the possible types of bed pathways and the proportions of patients going through each, we used studies collated in a systematic literature review of LoS values for patients with COVID-19 [28]. From these studies, mostly from China, we attempted to extract possible pathways and patient proportions (see [Supplementary Material](#)).

**Model outline**

To examine the impact of using patient bed pathways on bed occupancy forecasts, we developed a flexible discrete-time model. This model takes as input a time

series of the number and date of observed (or forecast) daily hospital admissions over any given period of time, and, for each bed pathway  $i$ , the following characteristics:

- the probability that any patient will go down this pathway ( $p_i$ , where  $\sum_i p_i = 1$ )
- the number of stages for each pathway  $i$  ( $N_i$ )
- an average LoS in each stage  $j$  for each pathway  $i$  ( $d_{i,j}$ )
- a standard deviation for each LoS ( $s_{i,j}$ )

For example, the pathway “Ward, CC” contains two stages ( $N_{W,CC} = 2$ ) with a first stage where the patient stays in a ward bed for an average of  $d_{\{W,CC\},1}$  days and s.d. of  $s_{\{W,CC\},1}$  days, followed by a second stage in a CC bed for an average of  $d_{\{W,CC\},2}$  days, s.d.  $s_{\{W,CC\},2}$ .

The model then proceeds as follows: on the first day ( $t_0$ ) of the admission data time series, we assign a pathway,  $k$ , to each admitted patient by sampling from all of the possible pathways, weighted by the probabilities,  $p$ . Then, for each patient, we randomly assign a LoS for each of the  $N_k$  stages by sampling from a Weibull distribution (commonly used to represent LoS distributions [28]) with mean  $d_{k,j}$  (with  $j$  in  $N_k$ ) and standard deviation  $s_{k,j}$ , and record that a bed of the corresponding type will be needed for that duration and for the specific time window determined by the order of the stages. Note that if a bed is needed for a fraction of a day, we conservatively assume that it is needed for that entire day (effectively rounding up the LoS to the next day). For sensitivity, we explored the impact of using a Lognormal instead of a Weibull distribution, and of rounding the LoS to the nearest day instead of rounding up.

Alternatively, instead of the mean and s.d., we can specify an empirical distribution for the LoS in each stage of the bed pathway (which we use with CO-CIN bed pathways data - see below). In that case, for each pathway  $i$  and stage  $j$ , the model takes as input a vector of values for the distribution ( $a_{i,j}$ ) and a vector of the corresponding probabilities for each value in the distribution ( $r_{i,j}$ ). For a patient assigned to a pathway,  $k$ , the LoS at each stage,  $j$ , is then sampled from the values provided in  $a_{kj}$ , weighted by the probabilities provided in  $r_{kj}$ .

For all results, 100 simulations of the model are performed, for which we report the daily mean overall bed requirements and 95% confidence intervals (mean  $\pm 1.96 * \text{standard error}$ ). For each bed type, we also calculate across these 100 simulations the median time and mean size of peak bed occupancy during the period over which admissions are generated, alongside the interquartile range (IQR) and standard deviation for peak time and peak size respectively.

## Bed occupancy predictions

### UCH

To obtain a time-series of daily hospital admissions and bed occupancy for UCH between 6th March 2020 to 17th April 2020, we re-used the same UCH dataset on COVID-19 inpatients described above. To generate the admissions time-series, we counted the earliest recorded admission date for each patient as one hospital admission on that date, regardless of bed type and bed pathway. Our time-series of admissions therefore represents admissions to hospital, rather than admissions to a specific bed type. To generate a time-series of general ward and CC bed occupancy, we looked at each bed pathway recorded for each patient. For each stage in each pathway, we noted the hospital bed type that was occupied by the patient during that stage (general ward or CC), and recorded that one hospital bed of that type was occupied between the beginning and end dates for that stage.

We then compared the time-series of UCH bed occupancy to model-predicted occupancy for the same period. This serves both as a model validation step, and an opportunity to explore the impact of patient bed pathways as a service evaluation for which model to use for UCH. Model-predicted occupancy for UCH was generated using the UCH hospital admissions time-series, and either the UCH bed pathways characteristics, or the UCH average LoS by bed type values. The UCH bed pathways characteristics used to parameterise the model (number of pathways, number of stages for each pathway, bed type at each stage, and mean LoS and standard deviation for each stage) were derived from our analysis above (see “Methods - Patient bed pathways”). This also applies to the average LoS by bed type estimates.

As a sensitivity analysis, we repeated this, keeping the UCH hospital admissions time-series, but using CO-CIN bed pathways characteristics and average LoS by bed type, instead of the UCH equivalents.

### CO-CIN

As CO-CIN covers patients across the UK, we use the LoS estimates to predict bed occupancy at a national level. To support this analysis, we used publicly available data from the UK Government COVID-19 dashboard on daily hospital admissions in England (total admissions, not separated by bed type) between 19th March 2020 and 19th August 2020 [29]. This dashboard also provides data on bed occupancy by bed type, from 20th March 2020 to 19th August 2020 for total occupancy (general ward plus CC), and from 2nd April 2020 to 19th August 2020 for CC occupancy only [29]. We derive the number of patients in general ward beds by subtracting the CC occupancy from the total occupancy.

We then compared the time-series of England bed occupancy to model-predicted occupancy for the same

period. Model-predicted occupancy for England was generated using the England hospital admissions time-series, and either the CO-CIN bed pathways characteristics, or the CO-CIN average LoS by bed type values. The CO-CIN bed pathways characteristics were derived from our analysis above (see “Methods - Patient bed pathways”), and provide empirical distributions from which to sample LoS at each stage in each pathway. On the other hand, the CO-CIN average LoS by bed type values only rely on mean LoS and standard deviation.

As a sensitivity analysis, we repeated this, keeping the England hospital admissions time-series, but using UCH bed pathways characteristics and average LoS by bed type, instead of the CO-CIN equivalents.

### Regional analysis

The UK Government COVID-19 dashboard also provides daily hospital admissions and bed occupancy for each of the seven NHS Regions in England, and for 208 NHS Trusts [29, 30]. We repeated the above analysis for each NHS Region, using either the CO-CIN bed pathways characteristics, or average LoS by bed type values. As this highlighted potential heterogeneity in LoS between Regions (see “Results”), we then searched for the best-fitting LoS values for each Region. We used the average LoS by bed type values, and allowed these to vary between NHS Regions, while maintaining the original CO-CIN proportions of patients going into either a general ward or CC bed. We identified the best-fitting values for LoS by minimising the sum of squared differences between model-predicted bed occupancy and publicly available bed occupancy data by bed type, calculated for each day available. Similarly, we found Trust level variation and hence searched for the best-fitting LoS values for each NHS Trust, to determine within-NHS Region heterogeneity.

As a sensitivity analysis, we also fit the model-predicted bed occupancy at the NHS Regions level by adjusting the proportion of patients going to a CC bed in each Region, while maintaining the original CO-CIN average LoS by bed type values.

## Results

### Patient bed pathways

#### UCH

We identified five possible bed pathways for the 168 patients with COVID-19 admitted to UCH between 6th March 2020 and 11th April 2020 (Table 1). Most patients followed the “Ward” pathway ( $n = 137$ , 81.5%), only staying in a ward bed during their hospitalisation at UCH. The other patient pathways, ranked from most to least common, were: “Ward, CC, Ward” (6.0%), “Ward, CC” (5.3%), “CC” (4.8%) and “CC, Ward” (2.4%).

The mean LoS in a ward bed across all pathways and all stages was 3.98 days (standard deviation (s.d.) 3.60

days), while the mean LoS in a CC bed was 4.67 days (s.d. 3.24). However, LoS in each bed type varied between different pathways (Table 1 and Fig. 1). The shortest mean length of stay in a ward bed was recorded in the “Ward, CC” pathway (1.78 days, s.d. 1.46), and the longest was recorded in the “Ward” pathway (4.37 days, s.d. 3.79). For CC beds, the shortest mean LoS was recorded in the “Ward, CC, Ward” pathway (3.54 days, s.d. 1.31), and the longest was recorded in the “Ward, CC” pathway (6.10 days, s.d. 5.17). Median LoS and IQR values are presented in Supplementary Table 2.

**CO-CIN**

We found the same five bed pathways using the CO-CIN dataset (Table 1). Most patients followed the “Ward” pathway (*n* = 29,975, 82.1%); however, the proportion of patients going through the other bed pathways differ slightly compared to UCH: “Ward, CC, Ward” (9.9%), “CC, Ward” (6.9%), “CC” (0.6%) and “Ward, CC” (0.5%).

LoS estimates and standard deviations are higher for all stages and all bed pathways in CO-CIN compared to UCH (Table 1 and Fig. 1). Across pathways, the mean LoS in a ward bed was 8.36 days (s.d. 10.53), and 12.31 days in a CC bed (s.d. 12.47). Again, we see variation in LoS by bed type between pathways (Fig. 1). The shortest mean length of stay in a ward bed was recorded in the “Ward, CC” pathway (3.27 days, s.d. 4.32), and the

longest was recorded in the “Ward” pathway (9.08 days, s.d. 10.19). For CC beds, the shortest mean LoS was recorded in the “Ward, CC” pathway (8.28 days, s.d. 12.49), and the longest was recorded in the “CC, Ward” pathway (13.53 days, s.d. 13.22). The complete empirical and multistate-modelled distributions for these LoS obtained from the CO-CIN dataset can be seen in Supplementary Figure 1. Median LoS and IQR values are presented in Supplementary Table 2.

**International**

In our analysis of studies reporting length of stay, none gave bed pathway information but 21 did give information on the “proportion of patients ever requiring an ICU bed” (see Supplementary Material). The weighted mean by patient number over these was 14% (s.d. 8%) (Supplementary Table 1). This is consistent with the aggregate “proportions of patients ever requiring a CC bed” we found in UCH (18.5%) and CO-CIN (17.9%).

**Impact of patient bed pathways on predicted bed occupancy**

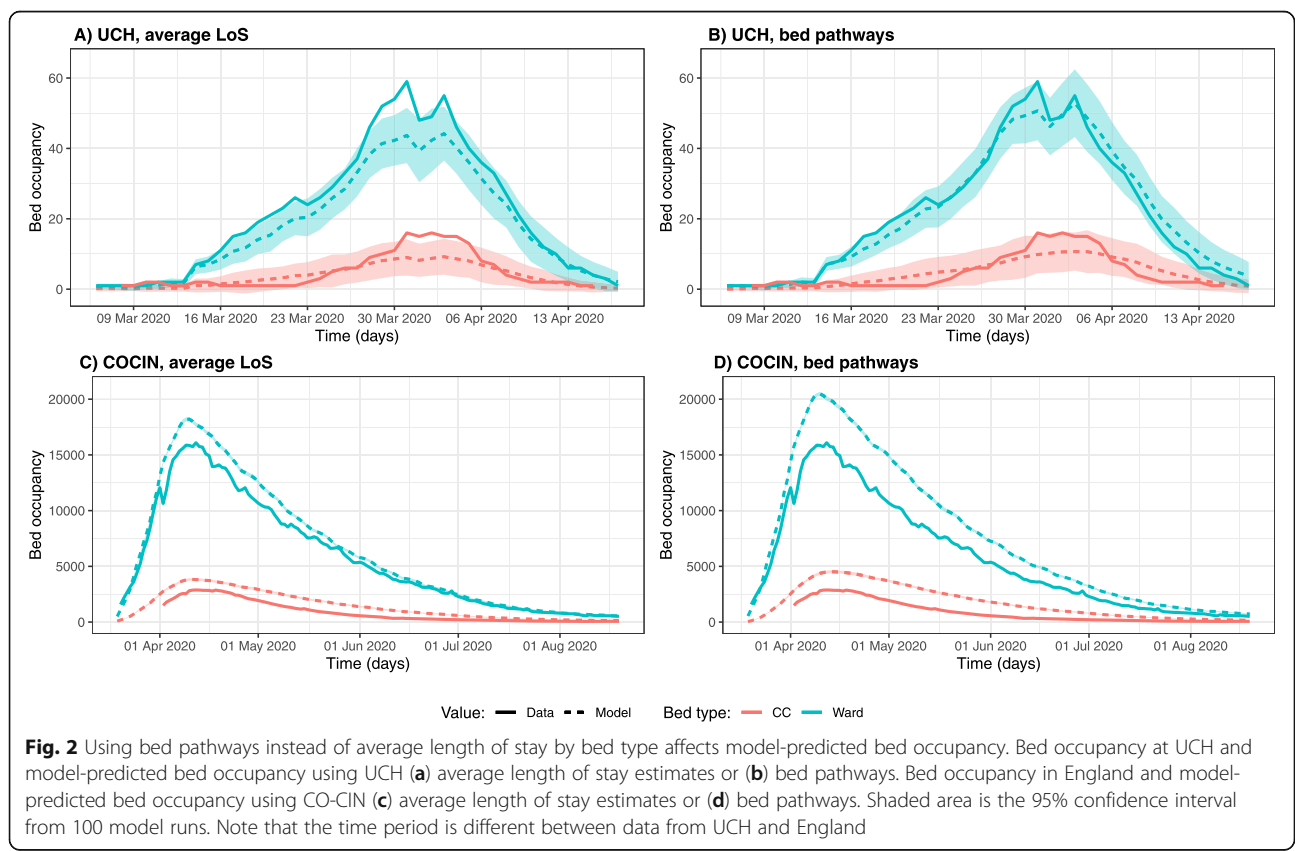
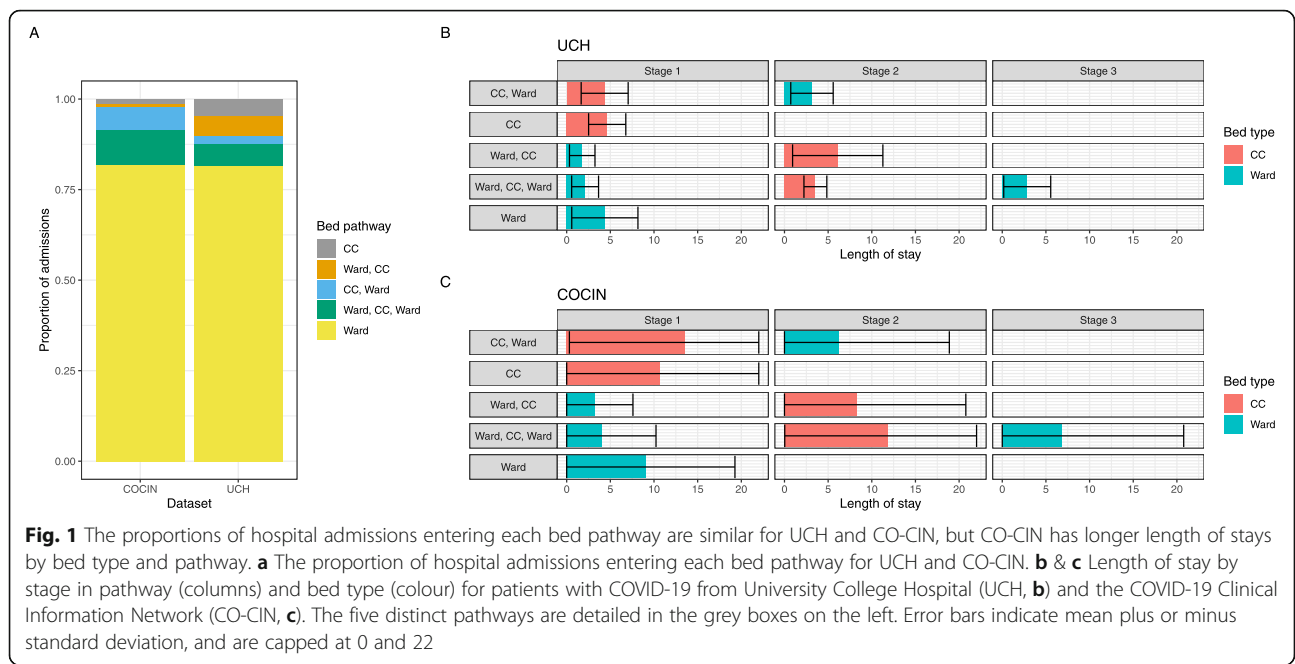
**UCH**

Model-predicted bed occupancy for UCH is similar to, but underestimates, true occupancy (Fig. 2a-b). Using bed pathways, compared to average LoS by bed type, resulted in values closer to the data (Fig. 2a-b and Supplementary Table 3). Predicted peak bed demand values

**Table 1** Patient pathways and length of stay for patients with COVID-19 from University College Hospital (UCH) and the COVID-19 Clinical Information Network (CO-CIN)

Dataset	Beds	n	Proportion	Stage 1		Stage 2		Stage 3		Total		
				Mean	s.d.	Mean	s.d.	Mean	s.d.	Mean	s.d.	
UCH	Bed pathways	CC	8	0.048	4.64	2.13	/	/	/	/	4.64	2.13
		CC, Ward	4	0.024	4.35	2.69	3.15	2.43	/	/	7.50	2.88
		Ward	137	0.815	4.37	3.79	/	/	/	/	4.37	3.79
		Ward, CC	9	0.053	1.78	1.46	6.10	5.17	/	/	7.88	5.56
		Ward, CC, Ward	10	0.060	2.11	1.54	3.54	1.31	2.86	2.69	8.51	3.90
	Averages by bed type	CC	31	0.154	4.67	3.24	/	/	/	/	4.67	3.24
		Ward	170	0.846	3.98	3.60	/	/	/	/	3.98	3.60
Total	All	168	1	/	/	/	/	/	/	4.89	4.00	
CO-CIN	Bed pathways	CC	232	0.006	10.91	12.31	/	/	/	/	10.91	12.31
		CC, Ward	2521	0.069	13.53	13.19	7.07	12.09	/	/	20.75	18.00
		Ward	29,975	0.821	9.60	10.83	/	/	/	/	9.60	10.83
		Ward, CC	183	0.005	3.39	4.53	8.77	13.41	/	/	12.18	14.16
		Ward, CC, Ward	3603	0.099	4.10	6.44	12.25	12.15	6.90	12.07	23.32	18.27
	Averages by bed type	CC	6539	0.141	12.58	12.78	/	/	/	/	12.58	12.78
		Ward	39,885	0.859	8.78	10.78	/	/	/	/	8.78	10.78
Total	All	36,514	1	/	/	/	/	/	/	11.69	13.23	

CC critical care, *n* number of occurrences of that pathway (for Bed pathways), or bed type (for Averages by bed type). Note that the sum of *n* for the bed pathways differs from the sum for the averages, since two stages of the same bed type in one pathway correspond to two occurrences of that bed type in the averages. s.d.: standard deviation



were higher when using bed pathways compared to average LoS by bed type, and hence more accurate, by approximately 17 and 18%, for ward and CC beds respectively (Table 2).

For ward beds, 95% of data points lie within the 95% confidence interval of the model-predicted bed occupancy using bed pathways, while for CC beds this value is 89%. The median peak time in ward bed occupancy estimated by the model is 3rd April 2020 (IQR 31st March - 3rd April) and 31st March 2020 (IQR 30th March - 3rd April), when using bed pathways or average LoS respectively, while the true peak occurred on 31st March 2020 (Table 2). For the CC bed occupancy peak, these dates were 2nd April 2020 (IQR 31st March - 4th April) and 31st March 2020 (IQR 30th March - 3rd April), when using bed pathways or average LoS respectively, and 31st March 2020 according to the data (Table 2).

**CO-CIN**

On the other hand, model-predicted bed occupancy for England using average LoS values from CO-CIN clearly overestimated ward and CC bed occupancy, compared to publicly available England hospitalisation data (Fig. 2c-d). Using bed pathways from CO-CIN instead of average LoS by bed type again led to higher estimates of bed occupancy, by approximately 12 and 18%, for ward and CC beds respectively (Table 2). The median estimated peak time for ward bed occupancy was 10th April 2020 when using either average LoS by bed type or bed pathways, compared to 12th April in the data. The number of beds needed at that time predicted by the model was approximately 27% higher than the data when using bed pathways, or 13% when using average LoS estimates. As for peak CC bed occupancy, the data indicated this occurred on 12th April 2020, while the median peak times predicted by the model were 14th April (IQR 13th April - 15th April) and 11th April (IQR 10th April -

12th April), when using bed pathways or average LoS respectively. Mean peak CC bed occupancy was approximately 57 and 33% higher compared to the data when using bed pathways or average LoS respectively.

**Heterogeneity in length of stay when predicting bed occupancy at a regional level**

To further investigate discrepancies between model-predicted bed occupancy and data in England, we apply the model at the NHS Regions level using the values from CO-CIN. As at the national level, our model consistently overestimates ward and CC bed occupancy across all Regions, when using either average LoS or bed pathways, although the extent of this overestimate varies between NHS Regions (Fig. 3 & Supplementary Figure 2).

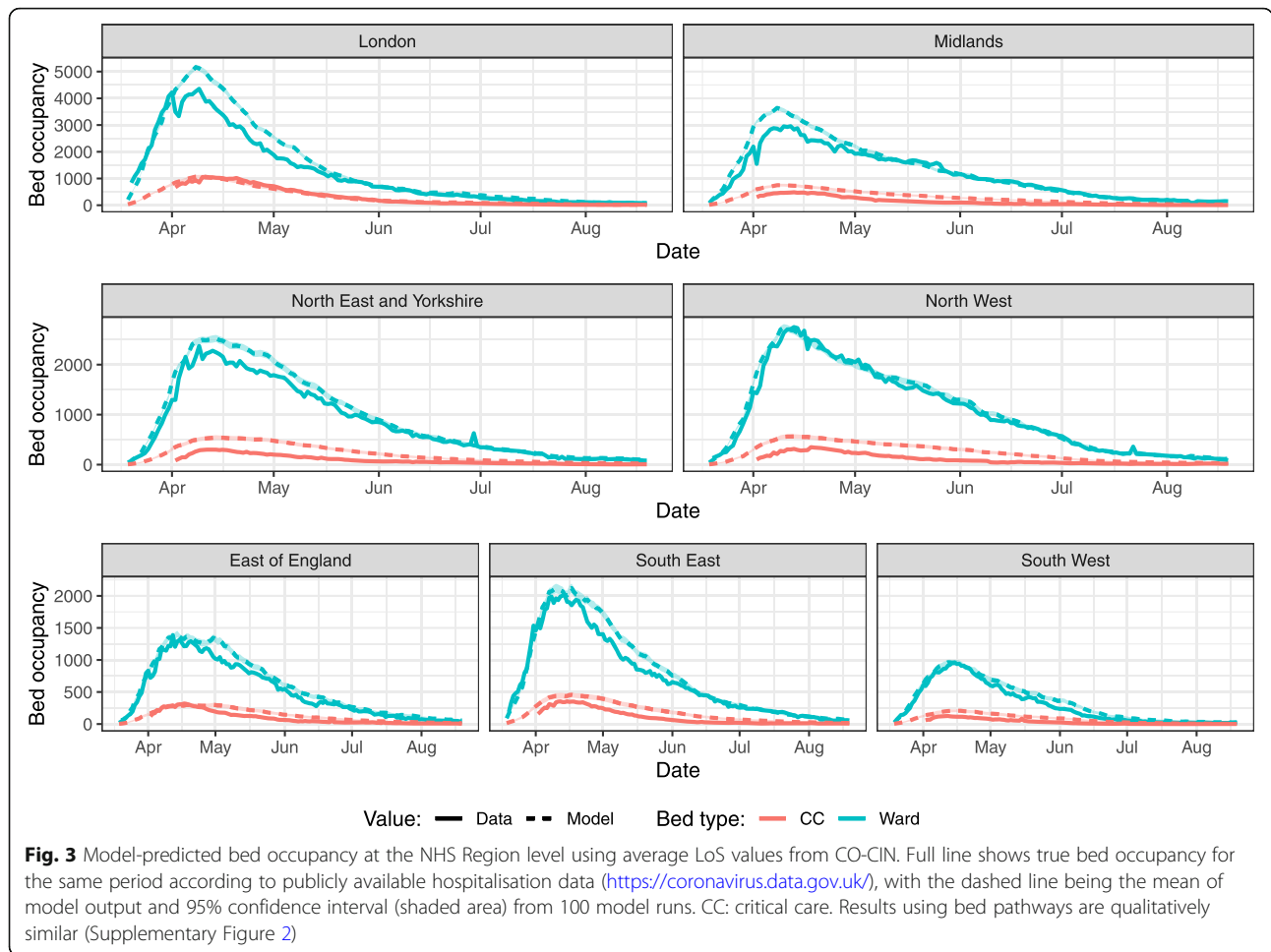
Generating model estimates for average LoS for both bed types by fixing proportions of patients admitted to each bed type to those in CO-CIN and fitting bed occupancy for each Region separately brings the model-predicted bed occupancy much closer to the data (Fig. 4, Supplementary Table 4). The resulting best-fit LoS values for ward beds are smaller in all Regions compared to the default CO-CIN value (though still higher than UCH values) (Table 3). Similarly, best-fit LoS values are smaller for CC beds in all Regions compared to the CO-CIN value, except for London. Recalculating averages for England using these regional LoS estimates weighted by the number of hospitalisations in each Region gives a similar pattern: LoS of 7.62 days for ward beds and 9.31 days for CC beds, while CO-CIN values for these are respectively 8.78 days and 12.58 days.

Figure 5 shows the distribution of best-fitting LoS values for 208 NHS Trusts, grouped by NHS Region. These boxplots indicate variations in LoS between NHS Trusts, and therefore within NHS Regions. The best-fitting LoS values for all the Trusts are available in the associated GitHub repository: <https://github.com/>

**Table 2** Peak bed occupancy predicted using bed pathways data for patients with COVID-19 from UCH and CO-CIN

Dataset	LoS used	Ward peak bed occupancy				CC peak bed occupancy			
		Median peak time	IQR peak time	Mean peak occ.	s.d. peak occ.	Median peak time	IQR peak time	Mean peak occ.	s.d. peak occ.
UCH	Bed pathways	03/04/20	31/03/20–03/04/20	54	4.06	02/04/20	31/03/20–04/04/20	13	2.51
	Averages	31/03/20	30/03/20–03/04/20	46	3.51	31/03/20	30/04/20–03/04/20	11	2.12
	Data	31/03/20	N/A	59	N/A	31/03/20	N/A	16	N/A
CO-CIN	Bed pathways	10/04/20	09/04/20–10/04/20	20,469	89.89	14/04/20	13/04/20–15/04/20	4530	65.05
	Averages	10/04/20	10/04/20–10/04/20	18,209	99.07	11/04/20	10/04/20–12/04/20	3835	56.26
	Data	12/04/20	N/A	16,093	N/A	12/04/20	N/A	2881	N/A

Daily hospital admissions are taken from UCH or UK Government data at the England level. Peak is defined as the earliest time at which maximum bed occupancy is reached. Results are from 100 model runs. Date format is dd/mm/yy. CC critical care, Occ. occupancy, s.d. standard deviation



[qlleclerc/COVID\\_bed\\_occupancy/blob/master/outputs/tables/best\\_fit\\_LoS\\_nhstrusts.csv](https://github.com/leclerc/COVID_bed_occupancy/blob/master/outputs/tables/best_fit_LoS_nhstrusts.csv).

**Sensitivity analysis**

Our bed occupancy predictions were less accurate when using a Lognormal instead of a Weibull distribution for LoS sampling (Supplementary Figure 3, Supplementary Table 3).

We note that using UCH LoS estimates instead of CO-CIN to predict England bed occupancy does not improve the results, as this leads to an underestimate in bed occupancy (Supplementary Figure 4). Similarly, using CO-CIN LoS estimates to predict UCH bed occupancy leads to an overestimate in ward bed occupancy, and an underestimate in CC bed occupancy (Supplementary Figure 4).

Varying the proportion of patients requiring CC beds instead of the LoS estimates led to a worse fit of bed occupancy, although the resulting proportions were consistent with the data (Supplementary Figure 5, Supplementary Table 4, Supplementary Table 5).

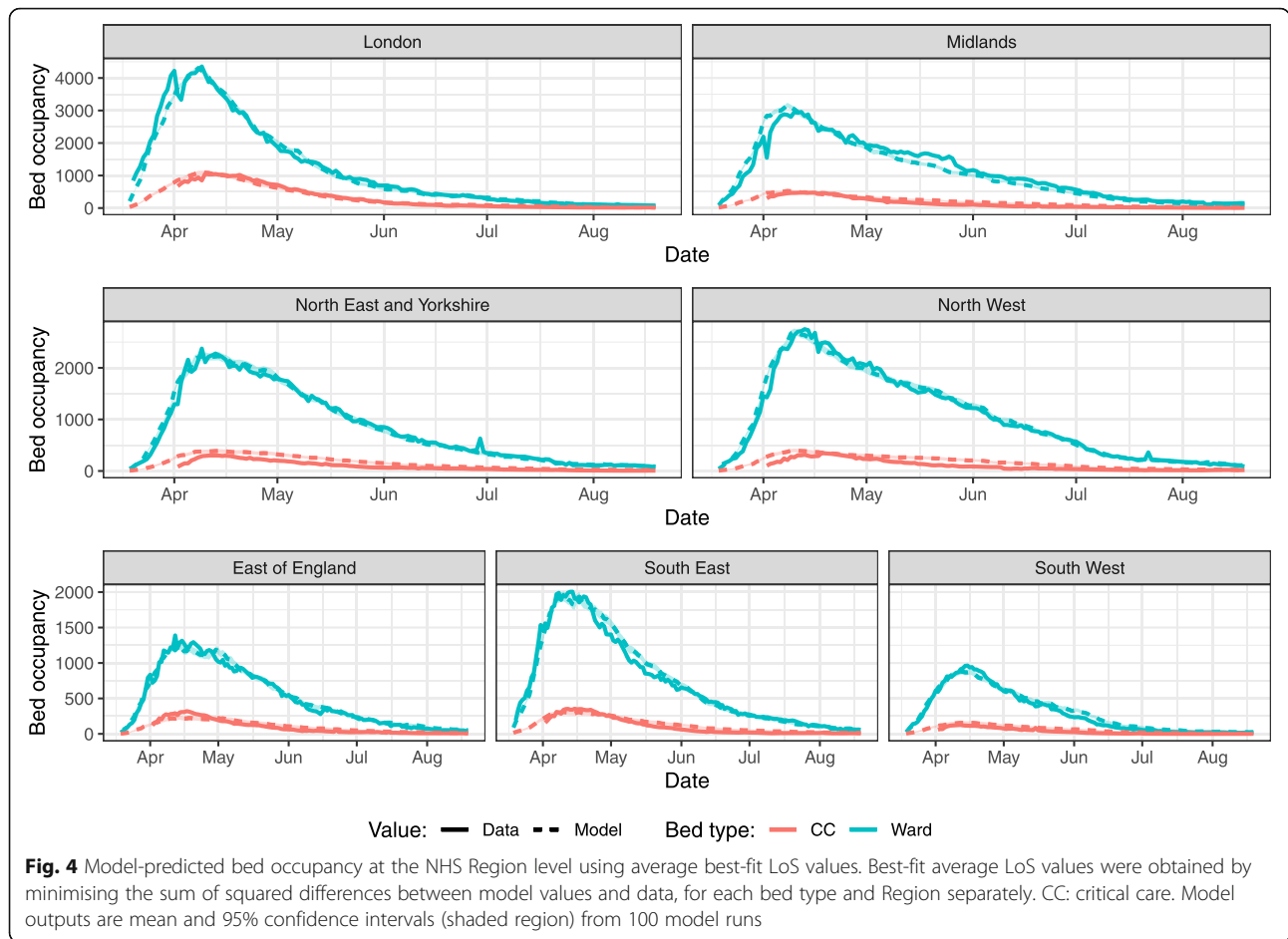
Discretizing our LoS samples by rounding to the nearest day instead of rounding up to the next day (i.e. ceiling) naturally led to reduced bed occupancy predictions. In the case of UCH, ceiling instead of rounding improved the match to data (Supplementary Table 3).

**Discussion**

**Summary of findings**

Accurate predictions of bed capacity, staff and associated equipment requirements in hospitals require an understanding of patient bed pathways and length of hospital stay. In this work we determined that, between March and August 2020 in England, most patients with COVID-19 (82%) required only a ward bed, for an average of 9.08 days. The remaining patients followed one of four other bed pathways, with lengths of stay (LoS) that varied by pathway and bed type. Incorporating bed pathways improved model-predicted bed occupancy at a local hospital level, compared to only using average LoS values by bed type. However, analyses at the England, NHS Regions and Trust level indicate that simply using national LoS values, even taking into account the bed





pathways, did not generate reported regional or national bed occupancy.

**Limitations**

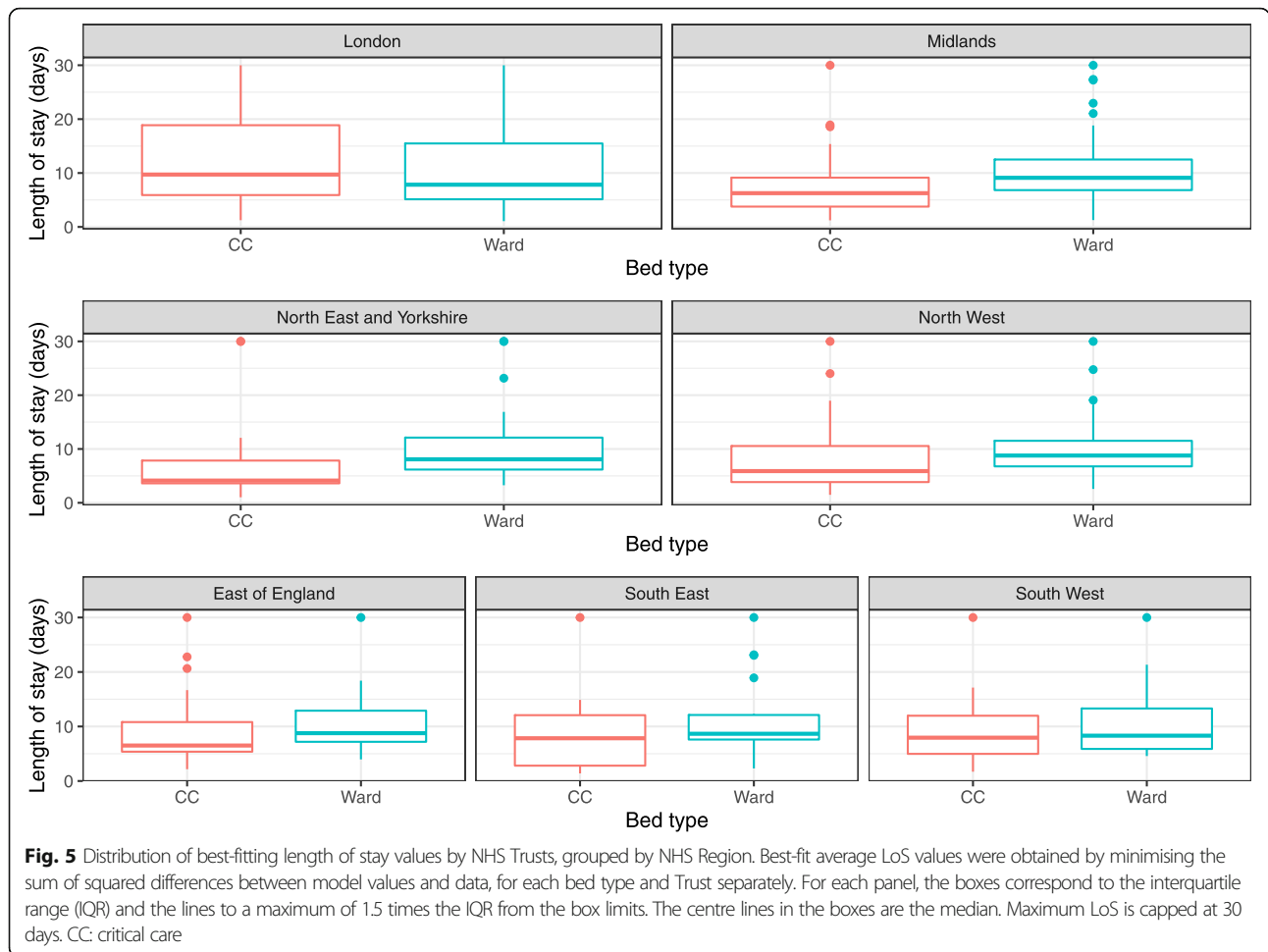
Our results are subject to limitations, notably linked to our model assumptions. Firstly, we chose to round-up sampled LoS estimates to the next day instead of rounding to the closest. In the case of UCH, this improved the fit of

the model-predicted bed occupancy to the data (Supplementary Table 3), however in other settings this assumption could lead to overestimating bed occupancy. Nevertheless, we consider this to be a “safer” approach, as it implies that a bed needed for a fraction of a day is needed for that entire day. For capacity planning, slightly overestimating bed occupancy will likely be preferred to underestimating it, which could have severe consequences

**Table 3** Best-fitting length of stay values by NHS Regions

Source of LoS values	Geography	Ward bed LoS (mean)	CC bed LoS (mean)
CO-CIN	England average	8.78	12.58
Best fit by Region	East of England	7.55	9.18
	London	6.97	12.64
	Midlands	7.36	8.08
	North East and Yorkshire	7.58	8.54
	North West	8.57	8.09
	South East	7.87	8.07
	South West	7.85	9.22
	England weighted average	7.62	9.31

The England weighted average is the average of fitted LoS values in NHS Regions weighted by the proportion of cumulative England hospitalisations that occurred in each Region. CC critical care



on clinical care. Secondly, we did not include a maximum bed capacity - this could improve accuracy if reaching limits frequently prevents patients from moving between bed types.

Thirdly, we assume that behaviours remain constant through time, which means that the average LoS estimates and proportion of patients going through each bed pathway do not change with time. This may not be realistic, as hospital discharge rates could vary with time, depending on capacity and changes in organisation. Similarly, the proportions of patients requiring critical care could change over time, depending on the public health measures in place which may affect the demographics of people most likely to be infected.

Finally, we assume independence within bed pathways, meaning that the LoS for each stage is drawn randomly, regardless of the LoS in previous stages. In reality, there could be a correlation between stages, where for example patients who stay in a CC bed for longer then need a longer recovery time in a ward bed, or vice versa.

On the data side, we are limited to making conclusions linked to the period of data collection: many things may

now have changed for patients with COVID-19 such as differences in discharge, clinical care and admission status, and they may have changed during data collection. For a single hospital, estimating this time variance with small numbers is difficult, and we would expect stochasticity to have a greater impact, which would also explain why the model and data do not perfectly align for UCH. Nosocomial cases could also affect length of stay estimates and bed occupancy. However, we were interested in total bed occupancy for COVID-19 patients and hence did not exclude them from our data.

**Results in context**

We currently have limited published evidence on the length of hospital stay for patients with COVID-19, and even less on patient bed pathways: two reviews estimate the median LoS in a CC bed for patients with COVID-19 to be approximately 8 days [28, 31] and median total hospital LoS to be 14 days (IQR 10–19) in China [28]. Our estimates were shorter for UCH, but similar in CO-CIN. This could be due to right-censoring in the UCH dataset (which only included those patients no longer in

the hospital) or due to the fact that few studies with similar conditions and healthcare settings (i.e. outside China) were included in the above mentioned reviews. For comparison, average LoS in a CC bed for patients needing advanced respiratory support in England during 2018–19 is 4.9 days [32]. The conclusion that most patients received care only in a general ward bed appears robust to international comparisons.

In the early months of the pandemic, the simplifying assumptions made by many capacity planning tools were necessary, as detailed data were not available on bed pathways. The next generation of bed capacity predictions tools should use patient bed pathways with local information on length of stay. To the best of our knowledge, there are only three other published models available which used patient bed pathways [33–35]. The first one used the pathways “Ward”, “Ward, ICU (not ventilated)”, “Ward, ICU (ventilated)”, “Ward, ICU (not ventilated), Ward”, “Ward, ICU (ventilated), Ward” [33]. However, the sources of the parameter values for these pathways are unclear, and seem to partly rely on a consensus of clinical experts, therefore comparisons with our results are difficult. On the other hand, the advantage of our analysis is that our code and length of stay data are both publicly available ([https://github.com/qlleclerc/COVID\\_bed\\_occupancy](https://github.com/qlleclerc/COVID_bed_occupancy)). As for the second model, it focused on machine-learning methods to estimate transition probabilities between the clinical states moderate/severe and critical, and is hence not comparable [34]. The third model is closely aligned to our own work here, as it uses multi-state methods to estimate length of stay using a local hospital and a national dataset from the UK [35]. Notably, this study investigates length of stay variations depending on when a patient was admitted to ICU during their hospitalisation, and also concludes that national estimates can differ from local ones.

### Possible explanations

We found that our initial hypothesis, that the LoS distribution for patients with COVID-19 should be the same everywhere in England, was unlikely to hold true. Instead, we observed regional variation, of up to 2 days differences for ward LoS and 4 days for CC LoS in the best fitting model estimates, as well as variation by NHS Trusts, and therefore within-NHS Regions. This could be explained in several ways. LoS for other diseases has been shown to vary between countries [36], and between hospitals, even after accounting for differences in local risk factors and demography [37].

However, the regional differences could also be due to true differences between NHS Regions in the COVID-19 care pathway and clinical practice. They could also reflect variation in risk factors for COVID-19

hospitalisation and disease severity, which would affect the proportion of patients in CC [38]. While we can indeed get a better fit by adjusting this (Supplementary Figure 5), leading to a range of values (8.9–21.0%, mean 14.2%) which are consistent with our meta-analysis on proportion of patients going to CC (mean 14.01%, s.d. 7.73%) (Supplementary Table 5), this is overall not as successful compared to adjusting LoS (Supplementary Table 4). These proportions are likely to be strongly age-dependent, but variation in age distribution between Regions (except London) are unlikely to be substantial enough to drive the observed differences. On the other hand, hospital resource availability does vary by Region: COVID-19 case prevalence alongside case management and bed availability may have affected bed pathways and hence LoS. For context, there were approximately 5900 critical care beds available in England as of February 2020 [4], and 92,500 ward beds as of June 2020 [39], but these were not evenly distributed between Regions, nor was the COVID-19 case burden [40].

At the NHS Trust level, estimated differences in LoS are harder to interpret. In a single region, Trusts may form a network where each Trust fulfills a specific role, such as specialising in the care of critically ill patients, leading to patient flows between hospitals [41]. This could cause the proportion of patients in CC to vary heavily between Trusts, whilst for simplicity this value is kept constant during our fitting process. Therefore, our estimated LoS for each Trust obtained by fitting should not be considered as truly representative. Instead, they serve to show that there is likely substantial variation not only between NHS Regions, but also within. The exact nature of this heterogeneity must then be clarified directly using Trust data on patients LoS.

A greater issue is likely to be inconsistency between data definitions (such as “critical care”) and sources of data (e.g. which Trusts are included) [29]. In the UK Government COVID-19 dashboard, CC beds are defined as “beds which are capable of delivering mechanical ventilation” [29]. This may be more restrictive, as beds delivering mechanical ventilation would be ICU beds only [42], while the CO-CIN definition of CC beds includes both ICU and HDU beds [13]. However, as the definition uses the word “capable”, it could include HDU beds. Altering the definition of CC beds to account for them being potentially too restrictive would not improve our national model estimates, as it would only further increase the model-predicted ward occupancy, which is already over-estimated.

### Organisational implications

Our findings indicate that the majority (82%) of hospitalised patients with COVID-19 in England only stayed in a general ward bed. Hospitals should plan infection

control measures accordingly to prevent nosocomial transmission of SARS-CoV-2.

In addition, the regional heterogeneities in length of stay we have identified imply that, whenever possible, hospitals should monitor local patient bed pathways and adapt their organisation based on these, instead of relying on data at the national level. In the work presented in this manuscript, the identification of patient pathways and their use to improve bed occupancy predictions for audit were greatly facilitated thanks to interdisciplinary collaboration. We therefore recommend that other hospitals should consider such collaborations to address organisational questions, especially in the context of public health crises such as COVID-19.

Moreover, in predicting bed occupancy it is not just the physical number of beds that needs to be measured but also the additional resources in terms of equipment and personnel. This organisation may vary between hospitals. For example, different hospitals may have different numbers of staff per bed [43, 44]. This again highlights the importance of adapting hospital organisation at a local level, since national guidelines may not be equally applicable to all hospitals.

#### Future work

Bed occupancy predictions crucially rely on predictions of hospital admissions, which are difficult to produce, especially at lower levels, such as the hospital. Using local past estimates of LoS can help narrow down uncertainty, though a key driver will be admission prediction variability. For example, the timing of the UCH & England peak bed occupancy were quite different. Our model would rely on good bed admission predictions to forecast bed occupancy, alongside accurate LoS values. Without these, errors in timing of peak can result in long tails of errors in levels of bed occupancy.

Understanding the reasons for the regional and sub-regional heterogeneity is a key next step. Matching this to known risk factor variation (e.g. in socio-economic status and comorbidities) could improve our understanding of clinical care impact. Future work clarifying the structure of patient bed pathways could be used to better understand the factors that contribute to patient outcomes, such as whether a patient is likely to die or be discharged at the end of their hospitalisation [45].

Our model could be expanded to consider additional resource complexity (such as staffing needs) and spare capacity requirements, alongside exploring trigger times for the need of future beds. This could be explored with simple adaptations to this model. Similarly, an exploration of time varying elements, such as admission & discharge procedures, alongside COVID-19 prevalence would be important.

This model structure is not linked specifically to the English situation and hence could be adapted to any setting. We found that patient bed pathways are likely to be similar globally but further data is required on length of stay to parameterise the bed pathways.

#### Conclusions

Our results emphasise the importance of local knowledge in predicting bed occupancy and hence capacity planning. We found that using only average LoS by bed types could underestimate bed occupancy at the hospital level. There may be important underlying heterogeneities in LoS, which should be further investigated as they may provide insight into the prevalence of risk factors for COVID-19 or clinical care disparities. As cases of COVID-19 are currently increasing again in England, and for future epidemic preparedness, it is essential to develop the best possible understanding of the bed pathways of patients with COVID-19 now, to avoid local under- or overestimates of forecasted bed occupancy.

#### Abbreviations

LoS: Length of stay; CC: Critical care; ICU: Intensive care unit; HDU: High-dependency unit; UCH: University College Hospital; NHS: National Health Service; CO-CIN: COVID-19 Clinical Information Network; s.d.: standard deviation; IQR: Interquartile range

#### Supplementary Information

The online version contains supplementary material available at <https://doi.org/10.1186/s12913-021-06509-x>.

#### Additional file 1.

#### Acknowledgments

We would like to thank University College Hospitals NHS Foundation Trust for their provision of data. Initially this was made available to us to support UCH bed occupancy prediction modelling in the early COVID-19 phase of 2020.

This work uses COCIN data provided by patients and collected by the NHS as part of their care and support #DataSavesLives. We are extremely grateful to the 2,648 frontline NHS clinical and research staff and volunteer medical students, who collected this data in challenging circumstances; and the generosity of the participants and their families for their individual contributions in these difficult times. We also acknowledge the support of Jeremy J Farrar and Nahoko Shindo.

The following authors were part of the Centre for Mathematical Modelling of Infectious Disease COVID-19 working group. Each contributed in processing, cleaning and interpretation of data, interpreted findings, contributed to the manuscript, and approved the work for publication: Matthew Quaife, Christopher I Jarvis, Sophie R Meakin, Billy J Quilty, Kiesha Prem, C Julian Villabona-Arenas, Fiona Yueqian Sun, Kaja Abbas, Megan Auzenbergs, Amy Gimma, Damien C Tully, Katharine Sherratt, Alicia Rosello, Nicholas G. Davies, Yang Liu, Rachel Lowe, Hamish P Gibbs, Naomi R Waterlow, W John Edmunds, David Simons, Graham Medley, James D Munday, Stefan Flasche, Frank G Sandmann, Alicia Showering, Rosalind M Eggo, Yung-Wai Desmond Chan, Carl A B Pearson, Adam J Kucharski, Anna M Foss, Timothy W Russell, Nikos I Bosse, Mark Jit, Sam Abbott, Jack Williams, Akira Endo, Samuel Clifford, Georgia R Gore-Langton, Petra Klepac, Oliver Brady, Joel Hellewell, Sebastian Funk, Kevin van Zandvoort, Rosanna C Barnard, Emily S Nightingale, Thibaut Jombart.

ISARIC4C Investigators:

Consortium Lead Investigator: J Kenneth Baillie, Chief Investigator: Malcolm G Semple, Co-Lead Investigator: Peter JM Openshaw. ISARIC Clinical Coordinator: Gail Carson.

Co-Investigators: Beatrice Alex, Benjamin Bach, Wendy S Barclay, Debby Bogaert, Meera Chand, Graham S Cooke, Annemarie B Docherty, Jake Dunning, Ana da Silva Filipe, Tom Fletcher, Christopher A Green, Ewen M Harrison, Julian A Hiscox, Antonia Ying Wai Ho, Peter W Horby, Samreen Ijaz, Saye Khoo, Paul Klenerman, Andrew Law, Wei Shen Lim, Alexander J Mentzer, Laura Merson, Alison M Meynert, Mahdad Noursadeghi, Shona C Moore, Massimo Palmarini, William A Paxton, Georgios Pollakis, Nicholas Price, Andrew Rambaut, David L Robertson, Clark D Russell, Vanessa Sancho-Shimizu, Janet T Scott, Thushan de Silva, Louise Sigfrid, Tom Solomon, Shiranee Srisakandan, David Stuart, Charlotte Summers, Richard S Tedder, Emma C Thomson, AA Roger Thompson, Ryan S Thwaites, Lance CW Turtle, Maria Zambon.

Project Managers: Hayley Hardwick, Chloe Donohue, Ruth Lyons, Fiona Griffiths, Wilna Oosthuizen.

Data Analysts: Lisa Norman, Riinu Pius, Tom M Drake, Cameron J Fairfield, Stephen Knight, Kenneth A Mclean, Derek Murphy, Catherine A Shaw.

Data and Information System Managers: Jo Dalton, James Lee, Daniel Plotkin, Michelle Girvan, Egle Saviuciute, Stephanie Roberts, Janet Harrison, Laura Marsh, Marie Connor, Sophie Halpin, Clare Jackson, Carrol Gamble, Claire Petersen, Scott Mullaney.

Data integration and presentation: Gary Leeming, Andrew Law, Murray Wham, Sara Clohisey, Ross Hendry, James Scott-Brown.

Material Management: William Greenhalf, Victoria Shaw, Sarah McDonald.

Patient engagement: Seán Keating.

Outbreak Laboratory Staff and Volunteers: Katie A. Ahmed, Jane A Armstrong, Milton Ashworth, Innocent G Asimwe, Siddharth Bakshi, Samantha L Barlow, Laura Booth, Benjamin Brennan, Katie Bullock, Benjamin WA Catterall, Jordan J Clark, Emily A Clarke, Sarah Cole, Louise Cooper, Helen Cox, Christopher Davis, Oslem Dincarslan, Chris Dunn, Philip Dyer, Angela Elliott, Anthony Evans, Lorna Finch, Lewis WS Fisher, Terry Foster, Isabel Garcia-Dorival, William Greenhalf, Philip Gunning, Catherine Hartley, Antonia Ho, Rebecca L Jensen, Christopher B Jones, Trevor R Jones, Shadia Khandaker, Katharine King, Robyn T. Kiy, Chrysa Koukorava, Annette Lake, Suzannah Lant, Diane Latawiec, L Lavelle-Langham, Daniella Lefteri, Lauren Lett, Lucia A Livoti, Maria Mancini, Sarah McDonald, Laurence McEvoy, John McLaughlan, Soeren Metelmann, Nahida S Miah, Joanna Middleton, Joyce Mitchell, Shona C Moore, Ellen G Murphy, Rebekah Penrice-Randal, Jack Pilgrim, Tessa Prince, Will Reynolds, P. Matthew Ridley, Debby Sales, Victoria E Shaw, Rebecca K Shears, Benjamin Small, Krishanthi S Subramaniam, Agnieszka Szemiel, Aislynn Taggart, Jolanta Tanianis-Hughes, Jordan Thomas, Erwan Trochu, Libby van Tonder, Eve Wilcock, J. Eunice Zhang.

Local Principal Investigators: Kayode Adeniji, Daniel Agranoff, Ken Agwuh, Dhiraj Ail, Ana Alegria, Brian Angus, Abdul Ashish, Dougal Atkinson, Shahedal Bari, Gavin Barlow, Stella Barnass, Nicholas Barrett, Christopher Bassford, David Baxter, Michael Beadsworth, Jolanta Bernatoniene, John Berridge, Nicola Best, Pieter Bothma, David Brealey, Robin Brittain-Long, Naomi Bulteel, Tom Burden, Andrew Burtenshaw, Vikki Caruth, David Chadwick, Duncan Chambler, Nigel Chee, Jenny Child, Srikanth Chukkambotla, Tom Clark, Paul Collini, Catherine Cosgrove, Jason Cupitt, Maria-Teresa Cutino-Moguel, Paul Dark, Chris Dawson, Samir Dervisevic, Phil Donnison, Sam Douthwaite, Ingrid DuRand, Ahilanadan Dushianthan, Tristan Dyer, Cariad Evans, Chi Eziefula, Christopher Fegan, Adam Finn, Duncan Fullerton, Sanjeev Garg, Sanjeev Garg, Atul Garg, Effrossyni Gkrania-Klotsas, Jo Godden, Arthur Goldsmith, Clive Graham, Elaine Hardy, Stuart Hartshorn, Daniel Harvey, Peter Havalda, Daniel B Hawcutt, Maria Hobrok, Luke Hodgson, Anil Hormis, Michael Jacobs, Susan Jain, Paul Jennings, Agilan Kaliappan, Vidya Kasipandian, Stephen Kegg, Michael Kelsey, Jason Kendall, Caroline Kerrison, Ian Kerslake, Oliver Koch, Gouri Koduri, George Koshy, Shondipon Laha, Steven Laird, Susan Larkin, Tamas Leiner, Patrick Lillie, James Limb, Vanessa Linnett, Jeff Little, Michael MacMahon, Emily MacNaughton, Ravish Mankregod, Huw Masson, Elijah Matovu, Katherine McCullough, Ruth McEwen, Manjula Meda, Gary Mills, Jane Minton, Mariyam Mirfenderesky, Kavya Mohandas, Quen Mok, James Moon, Elinoor Moore, Patrick Morgan, Craig Morris, Katherine Mortimore, Samuel Moses, Mbiye Mpenge, Rohinton Mulla, Michael Murphy, Megan Nagel, Thapas Nagarajan, Mark Nelson, Igor Otahal, Mark Pais, Selva Panchatsharam, Hassan Paraiso, Brij Patel, Natalie Pattison, Justin Pepperell, Mark Peters, Mandeep Phull, Stefania Pintus, Jagtur Singh Pooni, Frank Post, David Price, Rachel Prout, Nikolas Rae, Henrik Reschreiter, Tim Reynolds, Neil Richardson, Mark

Roberts, Devender Roberts, Alistair Rose, Guy Rousseau, Brendan Ryan, Taranprit Saluja, Aarti Shah, Prad Shanmuga, Anil Sharma, Anna Shawcross, Jeremy Sizer, Manu Shankar-Hari, Richard Smith, Catherine Snelson, Nick Spittle, Nikki Staines, Tom Stambach, Richard Stewart, Pradeep Subudhi, Tamas Szakmany, Kate Tatham, Jo Thomas, Chris Thompson, Robert Thompson, Ascanio Tridente, Darell Tupper-Carey, Mary Twagira, Andrew Ustianowski, Nick Vallotton, Lisa Vincent-Smith, Shico Visuvanathan, Alan Vuylsteke, Sam Waddy, Rachel Wake, Andrew Walden, Ingeborg Welters, Tony Whitehouse, Paul Whittaker, Ashley Whittington, Meme Wijesinghe, Martin Williams, Lawrence Wilson, Sarah Wilson, Stephen Winchester, Martin Wiselka, Adam Wolverson, Daniel G Wootton, Andrew Workman, Bryan Yates, and Peter Young.

#### Authors' contributions

Conceptualization: QJL, SRP, GMK; Data Curation: QJL, NMF, RHK, KDO, GMK; Formal Analysis: QJL, NMF, RHK, KDO, GMK; Investigation: QJL, NMF, RHK, KDO, GMK; Methodology: QJL, RHK, KDO, SRP, GMK; Software: QJL, GMK; Supervision: RS, MGS, KEA, SRP, GMK; Visualisation: QJL, GMK; Writing (Original Draft Preparation): QJL, NMF, GMK; Writing (Review & Editing): QJL, NMF, RHK, KDO, RS, MGS, KEA, SRP, GMK. All authors read and approved the final manuscript.

#### Funding

The authors declare the following funding sources. QJL: MRC London Interdisciplinary Doctoral Programme (MR/N013638/1), NMF: BBSRC London Interdisciplinary Doctoral Programme (BB/M009513/1), RHK: UK Research and Innovation Future Leaders Fellowship (MR/S017968/1), KDO: Wellcome Trust - Royal Society Sir Henry Dale Fellowship (218554/Z/19/Z), SRP: Bill & Melinda Gates Foundation (OPP1180644, INV-016832), GMK: MRC (MR/P014658/1). The ISARIC4C Investigators were supported by grants from the National Institute for Health Research (NIHR; award CO-CIN-01), the Medical Research Council (MRC; grant MC\_PC\_19059), and by the NIHR Health Protection Research Unit (HPRU) in Emerging and Zoonotic Infections at University of Liverpool in partnership with Public Health England (PHE), NIHR HPRU in Respiratory Infections at Imperial College London with PHE (award 200927). The following funding sources are acknowledged as providing funding for the CMMID COVID-19 Working Group authors. Alan Turing Institute (AE). BBSRC LIDP (BB/M009513/1: DS). This research was partly funded by the Bill & Melinda Gates Foundation (INV-001754: MQ; INV-003174: KP, MJ, YL; NTD Modelling Consortium OPP1184344: CABP, GFM; OPP1183986: ESN; OPP1191821: MA). BMGF (OPP1157270: KA). DFID/Wellcome Trust (Epidemic Preparedness Coronavirus research programme 221303/Z/20/Z: CABP, KvZ). Eirha R2HC/UK DFID/Wellcome Trust/This research was partly funded by the National Institute for Health Research (NIHR) using UK aid from the UK Government to support global health research. The views expressed in this publication are those of the author(s) and not necessarily those of the NIHR or the UK Department of Health and Social Care (KvZ). ERC Starting Grant (#757699: MQ; 757688: CJVA). This project has received funding from the European Union's Horizon 2020 research and innovation programme - project EpiPose (101003688: KP, MJ, PK, RCB, WJE, YL). This research was partly funded by the Global Challenges Research Fund (GCRF) project 'RECAP' managed through RCUK and ESRC (ES/P010873/1: AG, CJ, TJ). HDR UK (MR/S003975/1: RME). MRC (MR/N013638/1: NRW). Nakajima Foundation (AE). NIHR (16/136/46: BJQ; 16/137/109: BJQ, FYS, MJ, YL; Health Protection Research Unit for Immunisation NIHR200929: NGD; Health Protection Research Unit for Modelling Methodology HPRU-2012-10096: TJ; NIHR200908: RME; NIHR200929: FGS, MJ; PR-OD-1017-20002: AR, WJE). Royal Society (Dorothy Hodgkin Fellowship: RL; RP/EA180004: PK). UK DHSC/UK Aid/NIHR (ITCRZ 03010: HPG). UK MRC (LID DTP MR/N013638/1: GRGL; MC\_PC\_190665: AG, NGD, RME, SC, TJ, WJE, YL). Authors of this research receive funding from UK Public Health Rapid Support Team funded by the United Kingdom Department of Health and Social Care (TJ). Wellcome Trust (206250/Z/17/Z: AJK, TWR; 206471/Z/17/Z: OJB; 208812/Z/17/Z: SC, SFlasche; 210758/Z/18/Z: JDM, JH, KS, NIB, SA, SFunk, SRM). No funding (AMF, AS, DCT, JW, YWDC). The views expressed are those of the authors and not necessarily those of any of the funders named above. Funders were not involved in the study and collection, analysis, and interpretation of data and in writing the manuscript.

Open access funding provided by Karolinska Institute.

### Availability of data and materials

This work uses data provided by patients and collected by the NHS as part of their care and support #DataSavesLives. The CO-CIN data was collated by ISARIC4C Investigators. ISARIC4C welcomes applications for data and material access through our Independent Data and Material Access Committee (<https://isaric4c.net>).

The code and datasets generated and/or analysed during the current study are available in the GitHub repository, [https://github.com/qlleclerc/COVID\\_bed\\_occupancy](https://github.com/qlleclerc/COVID_bed_occupancy).

### Declarations

#### Ethics approval and consent to participate

Ethical approval for ISARIC was given by the South Central - Oxford C Research Ethics Committee in England (Ref 13/SC/0149), the Scotland A Research Ethics Committee (Ref 20/SS/0028) and the WHO Ethics Review Committee (RPC571 and RPC572, 25 April 2013). Local ethical approval for the use of the UCH data was provided by the London School of Hygiene and Tropical Medicine Ethics Committee (Ref 21907) for data analysis to provide a service evaluation.

#### Consent for publication

Not applicable.

#### Competing interests

MGS reports grants from DHSC NIHR UK, MRC UK, and HPRU in Emerging and Zoonotic Infections during the conduct of the study; minority ownership of Integrum Scientific LLC (Greensboro, NC, USA) outside the submitted work.

QJL, NMF, RHK, KDO, RS, KEA, SRP, GMK declare that they have no competing interests to disclose.

#### Author details

<sup>1</sup>Centre for Mathematical Modelling of Infectious Diseases, Department of Infectious Disease Epidemiology, Faculty of Epidemiology & Population Health, London School of Hygiene & Tropical Medicine, London, UK.

<sup>2</sup>Department of Medical Statistics, Faculty of Epidemiology & Population Health, Centre for Statistical Methodology, London School of Hygiene & Tropical Medicine, London, UK. <sup>3</sup>University College London Hospitals NHS Foundation Trust, London, UK. <sup>4</sup>NIHR Health Protection Research Unit, Institute of Infection, Veterinary and Ecological Sciences, Faculty of Health and Life Sciences, University of Liverpool, Liverpool, UK. <sup>5</sup>Centre for Global Health Research, Usher Institute of Population Health Sciences and Informatics, The University of Edinburgh, Edinburgh, UK.

Received: 16 February 2021 Accepted: 11 May 2021

Published online: 09 June 2021

### References

- Liu X, Zhou H, Zhou Y, Wu X, Zhao Y, Lu Y, et al. Risk factors associated with disease severity and length of hospital stay in COVID-19 patients. *J Inf Secur*. 2020;81(1):e95–7.
- Verity R, Okell LC, Dorigatti I, Winskill P, Whittaker C, Imai N, et al. Estimates of the severity of coronavirus disease 2019: a model-based analysis. *Lancet Infect Dis*. 2020;20(6):669–77. [https://doi.org/10.1016/S1473-3099\(20\)30243-7](https://doi.org/10.1016/S1473-3099(20)30243-7).
- Grasselli G, Pesenti A, Cecconi M. Critical care utilization for the COVID-19 outbreak in Lombardy, Italy: early experience and forecast during an emergency response. *JAMA*. 2020;323(16):1545–6. <https://doi.org/10.1001/jama.2020.4031>.
- Statistics » Critical Care Bed Capacity and Urgent Operations Cancelled 2019-20 Data. [cited 2020 Sep 8]. Available from: <https://www.england.nhs.uk/statistics/statistical-work-areas/critical-care-capacity/critical-care-bed-capacity-and-urgent-operations-cancelled-2019-20-data/>
- Phua J, Weng L, Ling L, Egi M, Lim C-M, Divatia JV, et al. Intensive care management of coronavirus disease 2019 (COVID-19): challenges and recommendations. *Lancet Respir Med*. 2020;8(5):506–17. [https://doi.org/10.1016/S2213-2600\(20\)30161-2](https://doi.org/10.1016/S2213-2600(20)30161-2).
- Remuzzi A, Remuzzi G. COVID-19 and Italy: what next? *Lancet*. 2020; 395(10231):1225–8. [https://doi.org/10.1016/S0140-6736\(20\)30627-9](https://doi.org/10.1016/S0140-6736(20)30627-9).
- The Trustees of the University of Pennsylvania. COVID-19 Hospital Impact Model for Epidemics (CHIME). [cited 2020 Sep 7]. Available from: <https://penn-chime.phl.io/>
- World Health Organization. Surge planning tools. [cited 2020 Sep 7]. Available from: <https://www.euro.who.int/en/health-topics/health-emergencies/coronavirus-covid-19/technical-guidance/strengthening-the-health-system-response-to-covid-19/surge-planning-tools>
- CDC. COVID-19Surge. 2020 [cited 2020 Sep 7]. Available from: <https://www.cdc.gov/coronavirus/2019-ncov/hcp/COVIDSurge.html>.
- Jombart T, Nightingale ES, Jit M, le Polain de Waroux O, Knight GM, Flasche S, et al. Forecasting critical care bed requirements for COVID-19 patients in England. *CMMID Reposit*. 2020; [cited 2020 Aug 27]. Available from: <https://cmmid.github.io/visualisations/hospital-bed-forecast>.
- MRC Centre for Global Infectious Disease Analysis, Imperial College London. Covid-19 Scenario Analysis Tool. [cited 2020 Sep 7]. Available from: <https://covidsim.org>
- Davies NG, Kucharski AJ, Eggo RM, Gimma A, Edmunds WJ, Jombart T, et al. Effects of non-pharmaceutical interventions on COVID-19 cases, deaths, and demand for hospital services in the UK: a modelling study. *Lancet Public Health*. 2020;5(7):e375–85. [https://doi.org/10.1016/S2468-2667\(20\)30133-X](https://doi.org/10.1016/S2468-2667(20)30133-X).
- Docherty AB, Harrison EM, Green CA, Hardwick HE, Pius R, Norman L, et al. Features of 20 133 UK patients in hospital with covid-19 using the ISARIC WHO Clinical Characterisation Protocol: prospective observational cohort study. *BMJ*. 2020;369 [cited 2020 Aug 25]; Available from: <https://www.bmj.com/content/369/bmj.m1985>.
- R Core Team. R: a language and environment for statistical computing. Vienna: R Foundation for statistical Computing; 2020. Available from: <https://www.R-project.org/>
- Schauberger P, Walker A. openxlsx: Read, Write and Edit xlsx Files. 2020. Available from: <https://CRAN.R-project.org/package=openxlsx>
- Müller K. here: a simpler way to find your files. 2017. Available from: <https://CRAN.R-project.org/package=here>
- Wickham H, François R, Henry L, Müller K. dplyr: A Grammar of Data Manipulation. 2020. Available from: <https://CRAN.R-project.org/package=dplyr>
- Wickham H. Reshaping data with the reshape package. *J Stat Softw*. 2007; 21(12):1–20.
- Jombart T, Kamvar ZN. lineist: Tools to Import and Tidy Case Lineist Data. 2020. Available from: <https://github.com/reconhub/lineist>
- Wickham H. ggplot2: Elegant Graphics for Data Analysis. New York: Springer-Verlag; 2016. Available from: <https://ggplot2.tidyverse.org>
- Wilke CO. cowplot: Streamlined Plot Theme and Plot Annotations for 'ggplot2'. 2019. Available from: <https://CRAN.R-project.org/package=cowplot>
- Xie Y. knitr: A General-Purpose Package for Dynamic Report Generation in R. 2020. Available from: <https://yihui.org/knitr/>
- Ren K. rlist: A Toolbox for Non-Tabular Data Manipulation. 2016. Available from: <https://CRAN.R-project.org/package=rlist>
- Wreede LC, de Fiocco M, Putter H. mstate: An R package for the analysis of competing risks and multi-state models. *J Stat Softw*. 2011;38(7):1–30.
- Prin M, Wunsch H. International comparisons of intensive care: informing outcomes and improving standards. *Curr Opin Crit Care*. 2012;18(6):700–6. <https://doi.org/10.1097/MCC.0b013e32835914d5>.
- Putter H, Fiocco M, Geskus RB. Tutorial in biostatistics: competing risks and multi-state models. *Stat Med*. 2007;26(11):2389–430. <https://doi.org/10.1002/sim.2712>.
- Beyersmann J, Putter H. A note on computing average state occupation times. *Demogr Res*. 2014;30:1681–96. <https://doi.org/10.4054/DemRes.2014.30.62>.
- Rees EM, Nightingale ES, Jafari Y, Waterlow NR, Clifford SB, Pearson CA, et al. COVID-19 length of hospital stay: a systematic review and data synthesis. *BMC Med*. 2020;18(1):270.
- Coronavirus (COVID-19) in the UK: UK Summary. [cited 2020 Sep 7]. Available from: <https://coronavirus.data.gov.uk/>
- NHS England » Regional teams. [cited 2020 Nov 3]. Available from: <https://www.england.nhs.uk/about/regional-area-teams/>
- Health Information and Quality Authority. Evidence summary for average length of stay in the intensive care unit for COVID-19. [cited 2020 Sep 8]. Available from: <https://www.hiqa.ie/reports-and-publications/health-technology-assessment/evidence-summary-average-length-stay>
- Statistics » A&E Attendances and Emergency Admissions 2019-20 [Internet]. [cited 2020 Sep 8]. Available from: <https://www.england.nhs.uk/statistics/statistical-work-areas/ae-waiting-times-and-activity/ae-attendances-and-emergency-admissions-2019-20/>

33. MASHA, HE2RO, SACEMA. Estimating cases for COVID-19 in South Africa - Short term Projections: 2020. 2020 Jun 12; Available from: [https://www.nicd.ac.za/wp-content/uploads/2020/06/SACovidModellingReport\\_ShortTermProjections\\_12062020\\_Final2.pdf](https://www.nicd.ac.za/wp-content/uploads/2020/06/SACovidModellingReport_ShortTermProjections_12062020_Final2.pdf).
34. Roimi M, Gutman R, Somer J, Ben Arie A, Calman I, Bar-Lavie Y, et al. Development and validation of a machine learning model predicting illness trajectory and hospital utilization of COVID-19 patients: A nationwide study. *JAMIA*. 2021;28(1);104–12. <https://doi.org/10.1093/jamia/ocab005>.
35. Vekaria B, Overton C, Wisniowski A, Ahmad S, Aparicio-Castro A, Curran-Sebastian J, et al. Hospital length of stay for COVID-19 patients: data-driven methods for forward planning. *Res Sq*. 2020. <https://doi.org/10.21203/rs.3.rs-56855/v1>.
36. Menéndez R, Cremades MJ, Martínez-Moragón E, Soler JJ, Reyes S, Perpiñá M. Duration of length of stay in pneumonia: influence of clinical factors and hospital type. *Eur Respir J*. 2003;22(4):643–8. <https://doi.org/10.1183/09031936.03.00026103>.
37. Rosenthal GE, Harper DL, Quinn LM, Cooper GS. Severity-adjusted mortality and length of stay in teaching and nonteaching hospitals. Results of a regional study. *JAMA*. 1997;278(6):485–90. <https://doi.org/10.1001/jama.1997.03550060061037>.
38. Clark A, Jit M, Warren-Gash C, Guthrie B, Wang HXH, Mercer SW, et al. Global, regional, and national estimates of the population at increased risk of severe COVID-19 due to underlying health conditions in 2020: a modelling study. *Lancet Glob Health*. 2020;8(8):e1003–17. [https://doi.org/10.1016/S2214-109X\(20\)30264-3](https://doi.org/10.1016/S2214-109X(20)30264-3).
39. Statistics » Bed Availability and Occupancy Data – Overnight. [cited 2020 Sep 8]. Available from: <https://www.england.nhs.uk/statistics/statistical-work-areas/bed-availability-and-occupancy/bed-data-overnight/>
40. Public Health England. National COVID-19 surveillance report: 2 October 2020 (week 40). GOV.UK. 2020 [cited 2020 Nov 25]. Available from: [https://assets.publishing.service.gov.uk/government/uploads/system/uploads/attachment\\_data/file/923668/Weekly\\_COVID19\\_Surveillance\\_Report\\_week\\_40.pdf](https://assets.publishing.service.gov.uk/government/uploads/system/uploads/attachment_data/file/923668/Weekly_COVID19_Surveillance_Report_week_40.pdf).
41. Donker T, Wallinga J, Slack R, Grundmann H. Hospital Networks and the Dispersal of Hospital-Acquired Pathogens by Patient Transfer. *PLOS ONE*. 2012;7(4):e35002.
42. Shirley P. Would you explain what the level 3 or level 2/3 ICU is? What is the difference between ICU and HDU? *BMJ*. 2005;330(7499):s184.
43. Making the most of NHS frontline staff.pdf. [cited 2021 May 4]. Available from: <http://www.wales.nhs.uk/sitesplus/documents/829/Making%20the%20most%20of%20NHS%20frontline%20staff.pdf>
44. Guidance on safe nurse staffing levels in the UK | Royal College of Nursing. The Royal College of Nursing. [cited 2021 May 4]. Available from: <https://www.rcn.org.uk/professional-development/publications/pub-003860>
45. Vincent J-L, Taccone FS. Understanding pathways to death in patients with COVID-19. *Lancet Respir Med*. 2020;8(5):430–2. [https://doi.org/10.1016/S2213-2600\(20\)30165-X](https://doi.org/10.1016/S2213-2600(20)30165-X).

## Publisher's Note

Springer Nature remains neutral with regard to jurisdictional claims in published maps and institutional affiliations.

**Ready to submit your research? Choose BMC and benefit from:**

- fast, convenient online submission
- thorough peer review by experienced researchers in your field
- rapid publication on acceptance
- support for research data, including large and complex data types
- gold Open Access which fosters wider collaboration and increased citations
- maximum visibility for your research: over 100M website views per year

**At BMC, research is always in progress.**

Learn more [biomedcentral.com/submissions](https://biomedcentral.com/submissions)

