



7-7-2020

A Mechanistic Model and Therapeutic Interventions for COVID-19 Involving a RAS-Mediated Bradykinin Storm

Michael R. Garvin
Oak Ridge National Laboratory

Christiane Alvarez
Oak Ridge National Laboratory

J. Izaak Miller
Oak Ridge National Laboratory

Erica T. Prates
Oak Ridge National Laboratory

Angelica M. Walker
Oak Ridge National Laboratory

See next page for additional authors

Follow this and additional works at: https://uknowledge.uky.edu/horticulture_gradpub



Part of the [Horticulture Commons](#), and the [Medicine and Health Sciences Commons](#)

[Right click to open a feedback form in a new tab to let us know how this document benefits you.](#)

Repository Citation

Garvin, Michael R.; Alvarez, Christiane; Miller, J. Izaak; Prates, Erica T.; Walker, Angelica M.; Amos, B. Kirtley; Mast, Alan E.; Justice, Amy; Aronow, Bruce; and Jacobson, Daniel, "A Mechanistic Model and Therapeutic Interventions for COVID-19 Involving a RAS-Mediated Bradykinin Storm" (2020). *Horticulture Graduate Research*. 1.

https://uknowledge.uky.edu/horticulture_gradpub/1

This Article is brought to you for free and open access by the Horticulture at UKnowledge. It has been accepted for inclusion in Horticulture Graduate Research by an authorized administrator of UKnowledge. For more information, please contact UKnowledge@lsv.uky.edu.

A Mechanistic Model and Therapeutic Interventions for COVID-19 Involving a RAS-Mediated Bradykinin Storm

Digital Object Identifier (DOI)

<https://doi.org/10.7554/eLife.59177>

Notes/Citation Information

Published in *eLife*, v. 9, e59177.

This is an open-access article, free of all copyright, and may be freely reproduced, distributed, transmitted, modified, built upon, or otherwise used by anyone for any lawful purpose. The work is made available under the [Creative Commons CC0 public domain dedication](#).

Authors

Michael R. Garvin, Christiane Alvarez, J. Izaak Miller, Erica T. Prates, Angelica M. Walker, B. Kirtley Amos, Alan E. Mast, Amy Justice, Bruce Aronow, and Daniel Jacobson

A mechanistic model and therapeutic interventions for COVID-19 involving a RAS-mediated bradykinin storm

Michael R Garvin¹, Christiane Alvarez¹, J Izaak Miller¹, Erica T Prates¹, Angelica M Walker^{1,2}, B Kirtley Amos³, Alan E Mast⁴, Amy Justice⁵, Bruce Aronow^{6,7}, Daniel Jacobson^{1,2,8*}

¹Oak Ridge National Laboratory, Biosciences Division, Oak Ridge, United States; ²University of Tennessee Knoxville, The Bredesen Center for Interdisciplinary Research and Graduate Education, Knoxville, United States; ³University of Kentucky, Department of Horticulture, Lexington, United States; ⁴Versiti Blood Research Institute, Medical College of Wisconsin, Milwaukee, United States; ⁵VA Connecticut Healthcare/General Internal Medicine, Yale University School of Medicine, West Haven, United States; ⁶University of Cincinnati, Cincinnati, United States; ⁷Biomedical Informatics, Cincinnati Children's Hospital Research Foundation, Cincinnati, United States; ⁸University of Tennessee Knoxville, Department of Psychology, Austin Peay Building, Knoxville, United States

Abstract Neither the disease mechanism nor treatments for COVID-19 are currently known. Here, we present a novel molecular mechanism for COVID-19 that provides therapeutic intervention points that can be addressed with existing FDA-approved pharmaceuticals. The entry point for the virus is ACE2, which is a component of the counteracting hypotensive axis of RAS. Bradykinin is a potent part of the vasopressor system that induces hypotension and vasodilation and is degraded by ACE and enhanced by the angiotensin₁₋₉ produced by ACE2. Here, we perform a new analysis on gene expression data from cells in bronchoalveolar lavage fluid (BALF) from COVID-19 patients that were used to sequence the virus. Comparison with BALF from controls identifies a critical imbalance in RAS represented by decreased expression of ACE in combination with increases in ACE2, renin, angiotensin, key RAS receptors, kinogen and many kallikrein enzymes that activate it, and both bradykinin receptors. This very atypical pattern of the RAS is predicted to elevate bradykinin levels in multiple tissues and systems that will likely cause increases in vascular dilation, vascular permeability and hypotension. These bradykinin-driven outcomes explain many of the symptoms being observed in COVID-19.

*For correspondence: jacobsonda@ornl.gov

Competing interests: The authors declare that no competing interests exist.

Funding: See page 11

Received: 21 May 2020

Accepted: 06 July 2020

Published: 07 July 2020

Reviewing editor: Frank L van de Veerdonk, Radboud University Medical Center, Netherlands

© This is an open-access article, free of all copyright, and may be freely reproduced, distributed, transmitted, modified, built upon, or otherwise used by anyone for any lawful purpose. The work is made available under the [Creative Commons CC0 public domain dedication](https://creativecommons.org/licenses/by/4.0/).

Introduction

The COVID-19 beta-coronavirus epidemic that originated in Wuhan, China in December of 2019 is now a global pandemic and is having devastating societal and economic impacts. The increasing frequency of the emergence of zoonotic viruses such as Ebola, Severe Acute Respiratory Syndrome (SARS), and Middle East Respiratory Syndrome (MERS) (among others) are of grave concern because of their high mortality rate (10%–90%). Fortunately, successful containment of those pathogens prevented global-scale deaths. In contrast, the current estimates of mortality for COVID-19 are much lower (~4%), but the virus has now infected more than nine million people and caused nearly a half a million deaths. The cause of mortality appears to be heterogeneous and although it typically targets

eLife digest In late 2019, a new virus named SARS-CoV-2, which causes a disease in humans called COVID-19, emerged in China and quickly spread around the world. Many individuals infected with the virus develop only mild, symptoms including a cough, high temperature and loss of sense of smell; while others may develop no symptoms at all. However, some individuals develop much more severe, life-threatening symptoms affecting the lungs and other parts of the body including the heart and brain.

SARS-CoV-2 uses a human enzyme called ACE2 like a 'Trojan Horse' to sneak into the cells of its host. ACE2 lowers blood pressure in the human body and works against another enzyme known as ACE (which has the opposite effect). Therefore, the body has to balance the levels of ACE and ACE2 to maintain a normal blood pressure. It remains unclear whether SARS-CoV-2 affects how ACE2 and ACE work.

When COVID-19 first emerged, a team of researchers in China studied fluid and cells collected from the lungs of patients to help them identify the SARS-CoV-2 virus. Here, Garvin et al. analyzed the data collected in the previous work to investigate whether changes in how the body regulates blood pressure may contribute to the life-threatening symptoms of COVID-19.

The analyses found that SARS-CoV-2 caused the levels of ACE in the lung cells to decrease, while the levels of ACE2 increased. This in turn increased the levels of a molecule known as bradykinin in the cells (referred to as a 'Bradykinin Storm'). Previous studies have shown that bradykinin induces pain and causes blood vessels to expand and become leaky which will lead to swelling and inflammation of the surrounding tissue. In addition, the analyses found that production of a substance called hyaluronic acid was increased and the enzymes that could degrade it greatly decreased. Hyaluronic acid can absorb more than 1,000 times its own weight in water to form a hydrogel. The Bradykinin-Storm-induced leakage of fluid into the lungs combined with the excess hyaluronic acid would likely result in a Jello-like substance that is preventing oxygen uptake and carbon dioxide release in the lungs of severely affected COVID-19 patients. Therefore, the findings of Garvin et al. suggest that the Bradykinin Storm may be responsible for the more severe symptoms of COVID-19.

Further experiments identified several existing medicinal drugs that have the potential to be repurposed to treat the Bradykinin Storm. A possible next step would be to carry out clinical trials to assess how effective these drugs are in treating patients with COVID-19. In addition, understanding how SARS-Cov-2 affects the body will help researchers and clinicians identify individuals who are most at risk of developing life-threatening symptoms.

older individuals, younger individuals are also at risk. A key to combating the pandemic is to understand the molecular basis of COVID-19 that may lead to effective treatments.

Paradoxically, an opportunity that was unavailable with SARS, MERS or Ebola has arisen because of the intense, globally distributed focus of medical and scientific professionals on COVID-19 that is providing a wealth of highly diverse information and data types. Nine bronchoalveolar lavage (BAL) samples were originally collected from patients in Wuhan China for RNA sequencing in order to determine the etiological agent for COVID-19 and resulted in the sequence of the first SARS-CoV-2 viral genome. However, the human reads from these samples were discarded. Here, we analyze the human RNA-seq data from these BAL samples alongside 40 controls.

Results and discussion

The Renin Angiotensin System (RAS)

Although pre-existing hypertension is a reported comorbidity for COVID-19, recent reports indicate hypotension is highly associated with COVID-19 patients once in the hospital (*Rentsch, 2020*). The RAS is an important pathway linked to these conditions because it maintains a balance of fluid volume and pressure using several cleavage products of the peptide angiotensin (AGT) and their receptors (*Arendse et al., 2019, Flores-Muñoz et al., 2011, Carey, 2017*). The most well-studied peptide is angiotensin II (Ang II), which typically generates vasoconstriction and sodium retention via

the AGTR1 receptor and vasodilation and natriuresis when binding to the AGTR2 receptor. The RAS also includes several other lesser known peptides that are highly important; Ang₁₋₇ binds to the MAS1 receptor, generating anti-inflammatory and vasodilatory effects, and Ang₁₋₉ binds to the AGTR2 receptor. Ang II is produced by the enzyme ACE whereas Ang₁₋₇ is generated by the combination of ACE and ACE2 activity and Ang₁₋₉ by ACE2 alone. It is important, therefore, to consider all of these components in the context of the others and not any one in isolation.

ACE2 is also the main receptor for the SARS-CoV-2 virus and is not highly expressed in normal lung tissue based on the Genotype-Tissue Expression (GTEx, gtexportal.org) six population. However, results from our differential gene expression analysis of RAS genes in cells taken from BAL samples from individuals presenting with severe symptoms of COVID-19 (Zhou *et al.*, 2020) demonstrates upregulation of ACE2 (199 fold) and disruption of this system compared to controls. In the COVID-19 samples, AGT (34 fold) and the enzyme that activates it (REN, 380 fold) are increased compared to controls whereas the enzymes that produce most of the cleavage products, including ACE (−8 fold), are downregulated, which will likely result in a shift of the entire RAS to produce Ang₁₋₉. In addition, the AGTR1 (430 fold) and AGTR2 (177 fold) receptors are upregulated in BAL COVID-19 samples.

Given the central role that the angiotensin and bradykinin (BK) peptides play in COVID-19 based on our gene expression analysis from BAL samples, we next focused on the RAS- and BK-related gene pathways in lung tissue from the GTEx population; specifically, the networks of genes that are correlated and anti-correlated with the expression of the angiotensin receptors AGTR2 and AGTR1. This subset of genes was annotated with functional information and cell type involvement which resulted in a network (Figure 1) that, as would be expected, demonstrates their extensive involvement in arterial and vascular resistance and blood flow via microvascular dilation, flow, and fluid balance. The genes on the left side of the network are extensively involved in vasoconstriction and contain, among others, ACE, AGTR1, BDKR2, Nitric Oxide Synthase-1, and −2 (NOS1 and NOS2). The right side of the network is extensively involved in decreased arteriolar resistance (vasodilation), increased vascular permeabilization, and altered fluid balance and includes, among other genes, ACE2, AGTR2, and the Vitamin D Receptor (VDR). Surprisingly, we find that both sides of the network are also clearly involved in immune system modulation.

The bradykinin system

Although not as widely discussed as angiotensin, BK is another potent regulator of blood pressure and can be considered essentially an extension of the RAS (Schmaier, 2002). Briefly, similar to the angiotensin peptides, BK is produced from an inactive pre-protein kininogen (either circulating - HMWK or tissue - LWMK) through activation by the serine protease kallikrein (Figure 2A). Kallikrein is represented by a cluster of serine proteases (KLK1-KLK15) on chromosome 19 with different tissue distributions; KLKB1 (on chromosome 4) is normally expressed in the pancreas and is responsible for circulating (plasma) kallikrein. These proteases are inactivated by zinc and several are known co-receptors for viruses including influenza (Kalinska *et al.*, 2016). KLKB1 is activated by FXII of the intrinsic coagulation pathway, which is normally kept in check by the C1-Inhibitor encoded by SERPING1 (Figure 2A). This has the vital ancillary effect of inhibiting the feedback loop of FXII activation by kallikrein (Kaplan and Ghebrehiwet, 2010).

Similar to AGTR2 stimulation, BK induces vasodilation, natriuresis, and hypotension upon activation of the BDKRB2 receptor. BK is tightly integrated with the RAS as BK receptor signaling is augmented by Ang₁₋₉, likely by resensitization of the BDKRB2 receptor (Chen *et al.*, 2005; Marcic *et al.*, 1999; Erdős *et al.*, 2002) and also because ACE degrades and inactivates BK. Interestingly, ACE has a higher affinity for BK than it does for AGT (Cyr *et al.*, 2001) and therefore under conditions where ACE is low, the vasopressor system is tilted toward a BK-directed hypotensive axis (Figure 2A). In addition to its role in pressure and fluid homeostasis, BK is a normal part of the inflammatory response after injury and acts to induce pain via stimulation of the BDKRB1 receptor by BK₁₋₈ (Jacox *et al.*, 2014), which also causes neutrophil recruitment and increases in vascular permeability (Stuardo *et al.*, 2004; Araújo *et al.*, 2001; Hofman *et al.*, 2016; Figure 2B). BK₁₋₈ is produced by the enzyme carboxypeptidase N (CPN1 671 fold) acting on BK.

As with the RAS, the BK system is also severely affected in the COVID-19 BAL samples. The expression of the BK precursor kininogen and nearly all of the kallikreins are undetected in controls but expressed in COVID-19 BAL (Figure 2A). Most of the enzymes that degrade BK, including ACE,

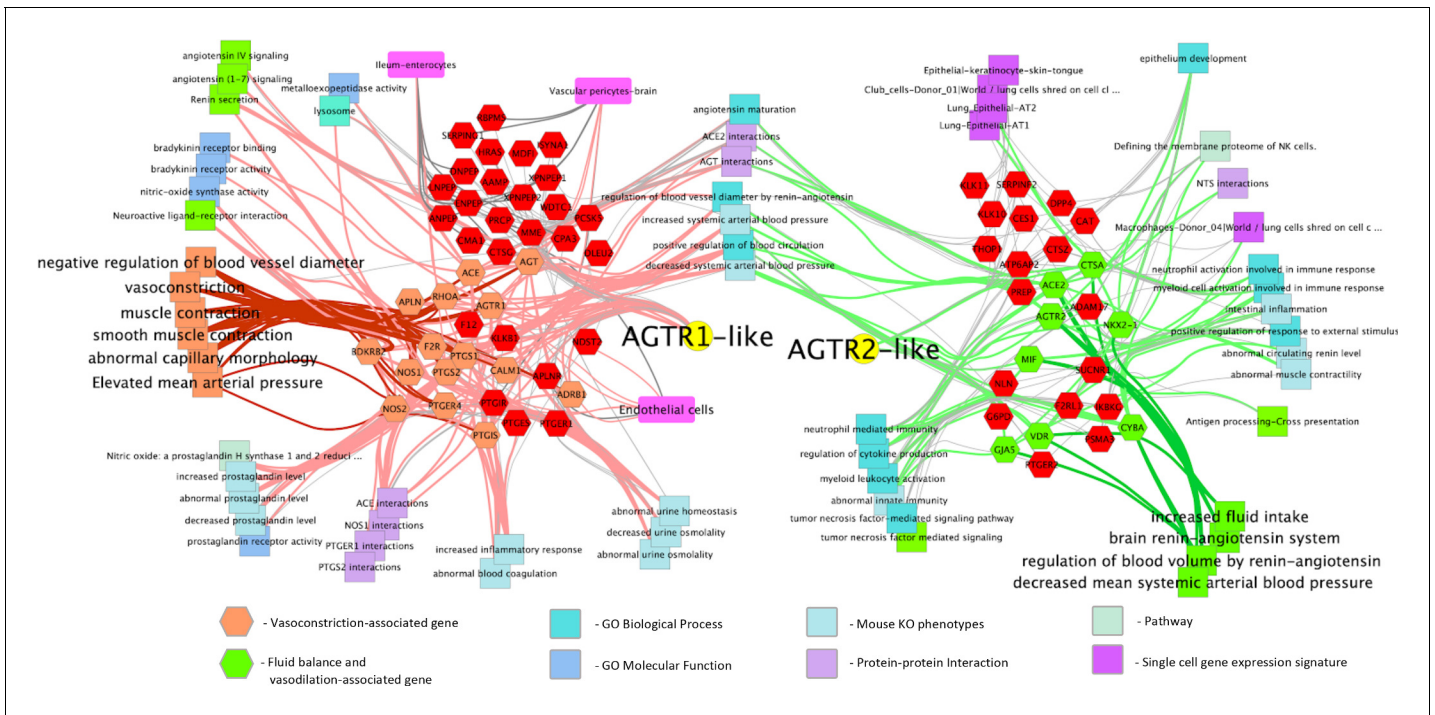


Figure 1. Functionally annotated network of genes involved in the hypertension-hypotension axis whose expression across the GTEx population is correlated and anticorrelated with the AGTR1 and AGTR2 receptors. When ACE is downregulated and ACE2 and the BK pathway is upregulated in the lungs of COVID-19 patients it leads to the hypotension, vascular permeability, and the Bradykinin Storm that explains much of COVID-19 symptomatology. As can be seen broadly across the figure, the resulting dysfunction caused by this imbalance will likely have a significant impact on the immune response by increasing processes on the right and decreasing those on the left. Genes are hexagons, highlighted colored genes of the AGTR1 cluster are associated with vasoconstriction and their connections to other enriched features are via pink edges; green highlighted genes in the AGTR2 cluster are those associated with fluid balance and vasodilation and their connections to enriched features are shown as light green edges. Figure is made from two gene cluster input to <http://toppcluster.cchmc.org> using FDR cutoff of 0.05 for network output and xgmml output to Cytoscape.

are downregulated (−8 fold) in COVID-19 BAL compared to controls, directing BK₁₋₉ and BK₁₋₈ to the upregulated receptors BKB2R (207 fold) and BKB1R (2945 fold), respectively. Of note, the pain-receptor BKB1R is normally tightly controlled and expressed only at very low levels in nearly all tissues in GTEx, but in the case of COVID-19 BAL, both BK receptors are expressed whereas they are virtually undetected in controls. Finally, F12 is unchanged but the SERPING1 (−33 fold) gene that encodes the C1-Inhibitor that inhibits FXII is highly down-regulated, which would result in even further increases in BK in COVID-19 patients given its role in KLKB1 activation (*Schmaier, 2016*). As described below, the resulting Bradykinin Storm is likely responsible for most of the observed COVID-19 symptoms.

Hyaluronic Acid synthesis and degradation

Hyaluronic acid (HA) is a polysaccharide found in most connective tissues. HA can trap roughly 1000 times its weight in water (*Cowman and Matsuoka, 2005*) and when bound to water the resulting hydrogel obtains a stiff viscous quality similar to ‘Jello’ (*Necas et al., 2008*). HAS1, HAS2 and HAS3 are genes that encode hyaluronan synthases which are integral membrane proteins responsible for HA production (*Necas et al., 2008*). HA is degraded by hyaluronidases encoded by HYAL1 and HYAL2. Proteins encoded by other genes in this family (HYAL3 and HYAL4) do not appear to have a hyaluronidase activity (*Harada and Takahashi, 2007; Kaneiwa et al., 2010*). HYAL1 encodes a lysosomal hyaluronidase (Hyal-1) active at low pH and is responsible for intracellular degradation of HA (*Harada and Takahashi, 2007*). HYAL2 encodes a membrane-bound hyaluronidase (Hyal-2) responsible for extracellular degradation of HA (*Harada and Takahashi, 2007*). Both Hyal-1 and Hyal-2 are dependent on CD44 (an HA receptor) for activity (*Harada and Takahashi, 2007*).

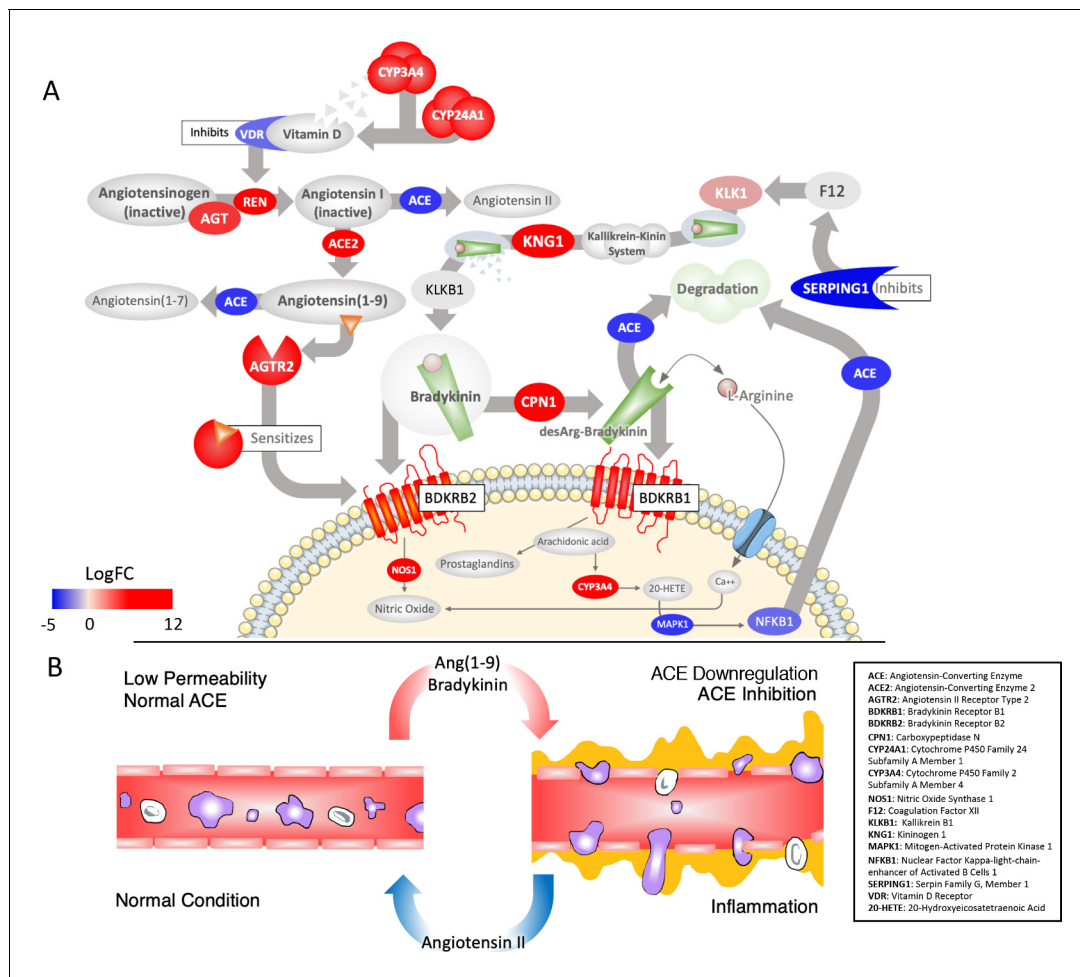


Figure 2. Critically disrupted RAS and Bradykinin pathways in COVID-19 BAL samples. **(A)** Significantly differentially expressed genes: red ovals indicate genes upregulated in COVID-19, blue are downregulated, colors are scaled to the \log_2 -fold-change values for COVID-19. The overall effect is to shift the system to production of Ang₁₋₉ and AGTR2-driven sensitization of BK receptors involved in pain (BDKRB1) and NO-dependent vasodilation (BDKRB2). Several points of inhibition maintain this imbalance. The suppression of NFKB1 by the virus decreases its binding to the ACE promoter and subsequent transcription (lower left). Decrease in the activation of Vitamin D and its receptor (VDR), which normally inhibits REN production, in combination with the upregulation of ACE2, increases flux of angiotensin to Ang₁₋₉ (top left). Decrease in the expression of the SERPING1 gene, lifts suppression of FXII of the intrinsic coagulation cascade, resulting in further production of BK from kallikrein and KNG (both upregulated) (top right). BK levels are further increased because ACE, which normally degrades it, is decreased. A surge in Ang₁₋₉ further sensitizes the effects of bradykinin at BDKRB2. Other enzymes that degrade BK are also downregulated such as MME, which is meant to degrade Ang₁₋₉, BK, and another important peptide Apelin (APLN). **(B)** The result of a hyperactive bradykinin system is vasodilation to the point of vascular leakage and infiltration of inflammatory cells.

As with the RAS and BK systems, the genes encoding HA synthesis and degradation are also severely affected in the COVID-19 BAL samples. There is significant upregulation of the genes involved in HA synthesis: HAS1 (9113 fold), HAS2 (493 fold), and HAS3 (32 fold). The CD44 gene that encodes the HA receptor required for HA degradation and the gene encoding extracellular hyaluronidase HYAL2 are both downregulated (-11 and -5 fold respectively) in the BAL fluid of COVID-19 patients. HYAL1 is not expressed in the BAL fluid of controls or the COVID-19 patients. The result of these shifts in expression would be likely to cause an increase in the amount of HA in the bronchoalveolar space of the lungs which, combined with the vascular hyperpermeability caused by BK, could form a viscous hydrogel that would negatively impact gas exchange (**Figure 3**). In fact, HA in BAL fluid has previously been associated with acute respiratory distress syndrome (ARDS) where there was a significant anticorrelation between the concentration of HA and the pulmonary oxygenation index (**Modig and Hällgren, 1989; Hällgren et al., 1989**). HA has also been associated

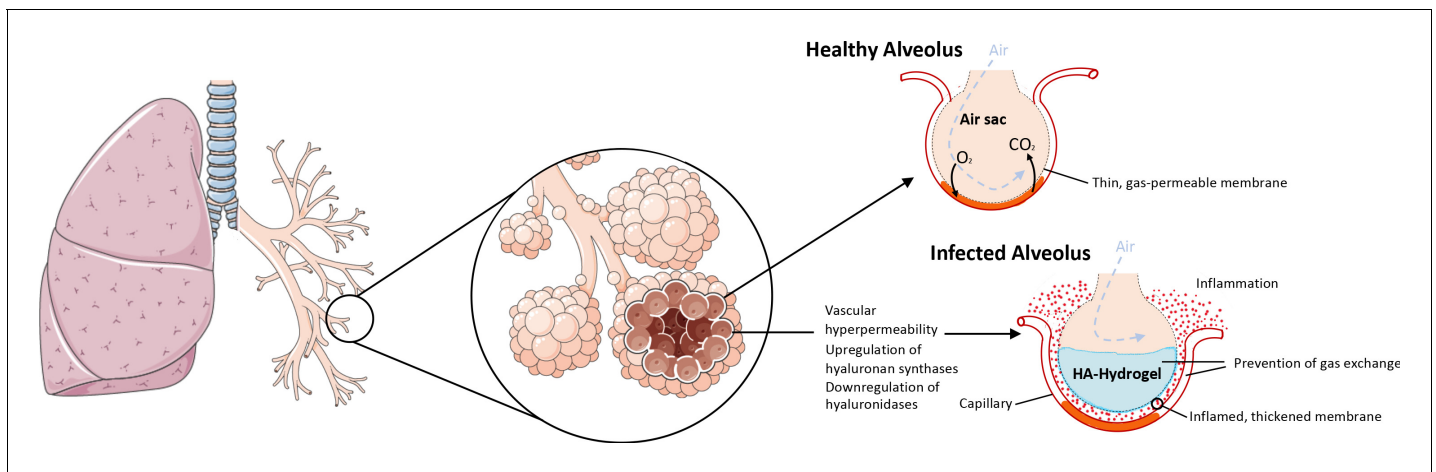


Figure 3. The upregulation of hyaluronan synthases and downregulation of hyaluronidases combined with the BK-induced hyperpermeability of the lung microvasculature leads to the formation of a HA-hydrogel that inhibits gas exchange in the alveoli of COVID-19 patients.

with pulmonary thrombosis and/or ground glass opacities in radiological findings (Bhagat et al., 2012; Han et al., 2019; Jang et al., 2014).

Although not the focus of the present study, coagulopathy is commonly reported in cases of COVID-19 (The Lancet Haematology, 2020), and there are suggestions in the literature of links between RAS and coagulopathy. The Ang1-9 peptide that is increased in COVID-19 BAL stimulates thrombosis by inhibiting fibrinolysis (Mogielnicki et al., 2014). In addition to BK, ACE also degrades the antifibrotic peptide N-acetyl-seryl-aspartyl-lysyl-proline (AcSDKP), which is produced from thymosin beta-4 (TMSB4X, –130 fold) (Kanasaki, 2020). Increased fibrinolysis could therefore be achieved by increasing ACE, or by administering thymosin beta-4, which is currently in clinical trials for the treatment of cardiovascular disorders (Timbetasin). If TMSB4X is, in fact, protective, it could explain the lower incidence of COVID-19 induced mortality in women (Jin et al., 2020) because it is found on the X chromosome and escapes X-inactivation. Women therefore would have twice the levels of this protein than men, which is supported by our BAL analysis (–207 fold in males, –131 fold in females).

In addition, both the RAS and BK pathways have previously been tied to HA. It was found that Angiotensin II increased CD44 expression and hyaluronidase activity (Bai et al., 2016). As discussed above, COVID-19 likely significantly downregulates the production of Angiotensin II which is consistent with the decrease in CD44 expression that is seen in the BAL fluid of SARS-CoV-2 infected patients. Furthermore, IL2 was recently reported to be highly upregulated in symptomatic but not asymptomatic COVID-19 patients (Long et al., 2020; Paegelow et al., 1995; Mustafa et al., 2002) and is upregulated (21 fold) in the BAL samples compared to controls. This cytokine is induced by BK in the lung, and causes vascular leakage syndrome (VLS), which appears to be mediated through CD44. Interestingly, CD44 knockout mice displayed reduced IL2-induced VLS, suggesting this may be a valuable target for COVID-19 intervention.

Clinical description of COVID-19

According to the CDC, the majority of SARS-CoV-2 infections are asymptomatic or mild. Those that proceed to more severe forms present with fever, a non-productive cough that may result in hemoptysis and shortness of breath. Other common symptoms are myalgia, fatigue, sore throat, nausea, vomiting, diarrhea, conjunctivitis, anorexia, and headache (cdc.gov/coronavirus/2019-ncov/hcp/clinical-guidance-management-patients.html). Reports from blood studies include leukopenia, eosinopenia, neutrophilia, elevated liver enzymes, C-reactive protein, and ferritin (Fan et al., 2020; Huang et al., 2020; Goyal et al., 2020). Furthermore, autopsies have reported extensive hyaline membrane formation in the lungs of COVID-19 patients (Barton et al., 2020; Xu et al., 2020; Adachi et al., 2020; Mong et al., 2020). Specifically, histological analysis of the lungs of a deceased

COVID-19 patient showed organizing hyaline membranes in the early stages of alveolar lesions and prominent hyaline membranes in the exudative phase of diffuse alveolar damage ([Adachi et al., 2020](#)). In a separate post mortem study of lung tissue from COVID-19 patients, microscopic examination found 'numerous hyaline membranes without evidence of interstitial organization' ([Barton et al., 2020](#)). Furthermore, in another autopsy study of a COVID-19 patient, histological analysis found extensive hyaline membranes, which the authors interpreted as indicative of ARDS ([Xu et al., 2020](#)). Finally, a meta-analysis showed that there was a statistically significant 4.6 fold difference in lung weight of COVID-19 patients versus controls, which they conclude is consistent with the HA-hydrogel formation known to occur in ARDS ([Mong et al., 2020](#)).

Although much focus has been on the lung due to the need for ventilator support of end-stage disease, COVID-19 also affects the intestine, liver, kidney, heart, brain, and eyes ([Wadman, 2020](#)). Nearly one-fifth of hospitalized patients experience cardiac injury ([Shi et al., 2020](#)), many of whom have had no history of cardiovascular problems prior to infection. Responses include acute myocardial injury, myocarditis, and arrhythmias ([Driggin et al., 2020](#)) that may be due to viral infection directly, which is consistent with high expression of the SARS-CoV-2 receptor ACE2 in cardiac tissue ([gtexpорта.org](#)). An important extension of the RAS in controlling cardiac contraction and blood pressure is the potent inotrope apelin (APLN), which acts as an NO-dependent vasodilator when its receptor (APLNR) heterodimerizes with BDKRB1 ([Bai et al., 2014](#)). APLN (98 fold), APLNR (3190 fold) and BDKRB1 (2945 fold) are all upregulated in COVID-19 BAL. As with BK and ANG derived peptides, APLN is inactivated by Neprilysin (MME), which is significantly downregulated in the BAL samples from COVID-19 individuals (−16 fold). Therefore, increased APLN-signaling can be added to the imbalanced RAS.

In addition to cardiac dysfunction, neurological involvement in COVID-19 was revealed after an MRI assessment of COVID-19-positive patients with encephalopathy symptoms in France identified enhancement in leptomeningeal spaces and bilateral frontotemporal hypoperfusion ([Helms et al., 2020](#)) which are consistent with increased vascular permeabilization in the brain. Furthermore, earlier reports from China indicate high frequencies of dizziness, headache, as well as taste and smell impairment ([Mao et al., 2020](#)). The most recent reports from the United States and China indicate that 30–50% of COVID-19 patients experience adverse gastrointestinal symptoms ([Cholankeril, 2020](#); [Pan et al., 2020](#)). Direct infection by the virus and damage to the kidney was also observed, specifically in the proximal tubules ([Su et al., 2020](#)). These latter two findings are not surprising given the higher expression of ACE2 in these tissues compared to tissues overall ([gtexportal.org](#)), which would facilitate infection by the virus. Finally, COVID-19 patients also frequently display skin rashes including 'covid-toe' that appear to be related to dysfunction of the underlying vasculature.

Bradykinin Storms: A model of SARS-CoV-2, COVID-19, and BK-driven Vascular Permeabilization

Based on previous work in SARS-CoV-1 and SARS-CoV-2, it is likely that this new coronavirus enters host cells in nasal passages where the receptor ACE2 is moderately expressed. Migration to throat tissues and passage through the stomach is then possible given that SARS-CoV-2 can survive the extreme pH of the gastric tissues ([Chin et al., 2020](#)) and infection could then expand into the intestines where ACE2 levels are high ([GTEx Consortium, 2013](#)). Initial infection might not occur in the lung epithelium given that ACE2 is undetectable or expressed at extremely low levels there ([GTEx Consortium, 2013](#)). Following infection, the single polypeptide that is translated from the virus' positive-strand RNA genome is cleaved into active proteins by the non-structural protein 3CL^{pro} protease. This protein is then repurposed by the virus to inactivate the host cells' first line of defense, interferon, most likely by degrading the NFkappaB activating factor IKK-gamma as has been shown to happen in the porcine coronavirus PEDV ([Wang et al., 2016](#)).

Aside from self-protection, the suppression of NFkappaB (−9 fold reduced in BAL samples) directly affects the RAS as NFkappaB normally induces the expression of ACE by binding to its promoter and increasing transcription ([Garcia et al., 2016](#); [Figure 2A](#)). This likely relates to the role of ACE in the innate immune response that is independent of its actions on the vascular system ([Bernstein et al., 2018](#)). The virus therefore acts pharmacologically as an ACE inhibitor by reducing its RNA expression more than 10-fold, which is supported by our BAL RNA-seq analysis. Additionally, ACE2 expression is normally downregulated in-part by Ang II ([Patel et al., 2016](#)). As Ang II is

the catalytic product of ACE, it would seem that the virus's ability to decrease ACE expression would have the effect of upregulating ACE2 (199 fold in our BAL analysis). In some patients, severe pulmonary involvement could occur when the virus is introduced into the intestinal lymph vessels and moves up the lymphatic system ([Chen, 2020](#)), enters the bloodstream at the thoracic duct and moves through the heart and into the lung microvasculature where it could attack cells in the lungs that now express ACE2 due to virus-induced upregulation.

Given that the high levels of ACE in the vascular bed of the lung are the major producer for circulating angiotensin-derived peptides ([Studdy et al., 1983](#)), establishment of SARS-CoV-2 in the lung will have profound effects. Downregulation of ACE here (confirmed in BAL samples from COVID-19 patients) will result in the diversion of the RAS to produce the BK-augmenting peptide Ang₁₋₉, exacerbating BK-effects, such as pain sensitization and increased vascular permeability on a system-wide level. Expansion of this imbalance as described above ([Figure 2](#)), increases levels of BK and will result in increased vascular permeability in tissues that have been infected by SARS-CoV-2 and be most severe in those that are normally regulated by ACE. ACE may also provide a key diagnostic point as half of the variation amongst individuals can be explained by an insertion/deletion polymorphism of the gene ([Rigat et al., 1990](#)).

As mentioned above, the combination of vascular permeability and HA build up in the lungs could produce a hydrogel that significantly inhibits gas exchange in bronchoalveolar spaces. This is consistent with the autopsy reports of hyaline membranes in the lungs of deceased COVID-19 patients as well as other acute respiratory distress conditions (e.g., SARS, MERS, ARDS) ([Barton et al., 2020](#); [Xu et al., 2020](#); [Adachi et al., 2020](#)) Although this likely represents a late-stage event in severe cases of COVID-19, if the cause is overproduction of HA as a result of disruption of the RAS, it is also a potentially valuable intervention point because the condition is easily identified, and treatment could have rapid and significant beneficial effects.

In addition, increased levels of the vasodilating peptide APLN that are produced in COVID-19 patients could have spillover effects on cardiac function. APLN upregulates the expression of ACE2 ([Sato et al., 2013](#)) and directly affects cardiac contraction and vasodilation. Increased levels of APLN are known to be associated with cardiac arrhythmia ([Salska et al., 2018](#)) and in the case of hyper-stimulated BK output, could be causing cardiac events in COVID-19 patients. In addition, increased levels of APLN could lead to more ACE2 receptors for SARS-CoV-2 in the heart and thus stimulate further infection.

Furthermore, excess BK can lead to hypokalemia ([Zhang et al., 2018](#)), which is associated with arrhythmia and sudden cardiac death ([Kjeldsen, 2010](#)), ([Bielecka-Dabrowa et al., 2012](#); [Skogestad and Aronsen, 2018](#)), both of which have been reported in COVID-19 patients ([Huang et al., 2020](#); [Guo et al., 2020](#)), ([Wang et al., 2020](#)); a recent report confirms that hypokalemia is occurring in severe cases of COVID-19 ([Lippi et al., 2020](#)). It is also notable that many of the other symptoms being reported for COVID-19 (myalgia, fatigue, nausea, vomiting, diarrhea, anorexia, headaches, decreased cognitive function) are remarkably similar to other hyper-BK-conditions that lead to vascular hyper-permeabilization such as angioedema as was recently noted ([van de Veerdonk et al., 2020](#)). In agreement with that report, our results indicate that the pathology of COVID-19 is likely the result of Bradykinin Storms rather than cytokine storms (although given the induction of IL2 by BK, the two may be intricately linked). This model predicted that a loss of ACE2 would exacerbate the BK-induced pathogenesis ([van de Veerdonk et al., 2020](#)). However, the BAL fluid expression data indicate that the Bradykinin Storm is instead caused by upregulation of ACE2 and reduced degradation of BK by ACE. Based on this data-driven model, an individual's symptomatology is likely directly related to the specific tissue distribution of viral infection around the body ([Figure 4](#)) and should be viewed in the context of an overactive bradykinin response. The majority of circulating BK is degraded in the lungs by ACE and therefore heterogeneous symptoms of COVID-19 could also be the result of systemic effects of increased levels of circulating bradykinin and the eight-fold reduction of ACE in the lung microvasculature that would normally degrade it.

Given this model, factors that affect RAS balance should be further investigated in the framework of diagnosis and treatment. For example, another well-documented regulator of RAS is Vitamin D ([Vaidya and Williams, 2012](#)) as the liganded Vitamin D receptor (VDR) suppresses REN expression. Patients who are deficient in Vitamin D are at-risk for ARDS in general ([Dancer et al., 2015](#)) and Vitamin D deficiencies have recently been associated with severity of illness in COVID-19 patients ([Alipio, 2020](#)). Our BAL gene expression analysis shows that VDR is 2-fold down-regulated and

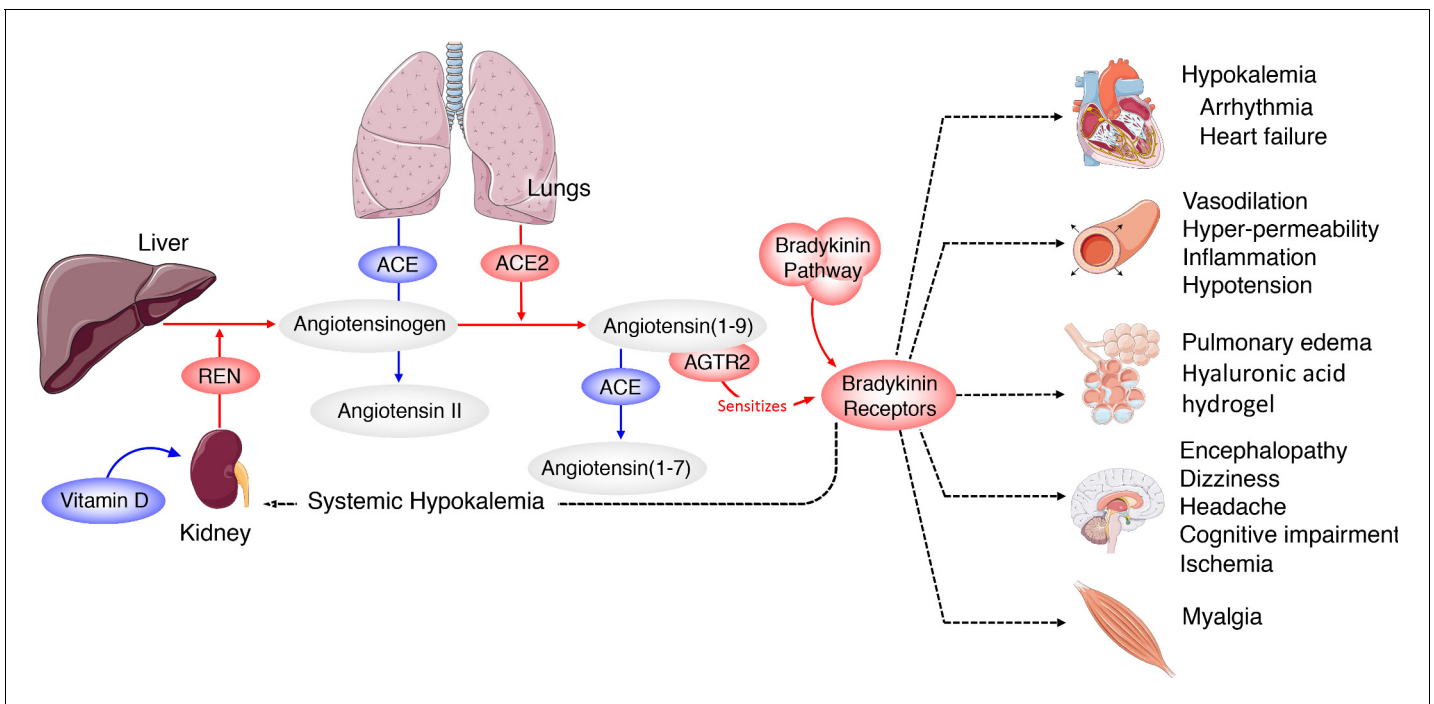


Figure 4. Systemic-level effects of critically imbalanced RAS and BK pathways. The gene expression patterns from COVID BAL samples reveal a RAS that is skewed toward low levels of ACE that result in higher levels of Ang₁₋₉ and BK. High levels of ACE normally present in the lungs are responsible for generating system-wide angiotensin-derived peptides. As detailed in **Figure 2**, the Bradykinin-Storm is likely to affect major organs that are regulated by angiotensin derivatives. These include altered electrolyte balance from affected kidney and heart tissue, arrhythmia in dysregulated cardiac tissue, neurological disruptions in the brain, myalgia in muscles and severe alterations in oxygen uptake in the lung itself. Red colors indicate upregulation and blue downregulation.

enzymes [CYP24A1 (465 fold), CYP3A4 (208 fold)] that catabolize Vitamin D (1,25(OH)₂D) and its precursor (25OHD) (**Bikle, 2014**) are up-regulated in COVID-19 patients compared to controls, which will likely result in further increases in REN. Furthermore, our analysis of ChipSeq experiments from a VDR study **Tuoresmäki et al., 2014** have determined that, in addition to REN, the following genes in the RAS-Bradykinin system have a VDR binding site within 20 kilobases: BDKRB1, BDKRB2, CYP24A1, DPP4, IKBKG (regulates NFκB), KLK1, KLK2, KLK4, KLK6, KLK7, KLK9, KLK10, and MME. Six of these binding sites can be tied to the following genes via chromatin structure with the use of H-MAGMA and Hi-C data (see Materials and methods): DPP4, BDKRB2, KLK6, KLK7, KLK10, and IKBKG. VDR binds to many sites in the genome with tissue-specific binding patterns so these putative associations to other genes in the RAS and BK pathways will require further investigation.

Potential interventions

Several interventional points (most of them already FDA-approved pharmaceuticals) could be explored with the goal of increasing ACE, decreasing BK, or blocking BK2 receptors (**Table 1**). Icatibant is a BKB2R antagonist (**Dubois and Cohen, 2010**) whereas Ecallantide acts to inhibit KLKB1, reducing levels of BK production (**Farkas and Varga, 2011**). Androgens (danazol and stanosolol) increase SERPING1, although the side effects likely make these undesirable (**Wilkerson, 2012**), but recombinant forms of SERPING1 (Berinert/Cinryze/Haegarda) could be administered to reduce BK levels. It should be noted that any intervention may need to be timed correctly given that REN levels rise on a diurnal cycle (**Gordon et al., 1966**), peaking at 4AM which corresponds with the commonly reported worsening of COVID-19 symptoms at night. Another approach would be the modulation of REN levels via Vitamin D supplementation when warranted. 4-methylumbelliferone (Hymecromone) is a potent inhibitor of HAS1, HAS2, and HAS3 gene expression and results in the suppression of the production of hyaluronan in an ARDS model (**McKallip et al., 2003; McKallip et al., 2013**). Hymecromone (4-methylumbelliferone) is approved for use in Asia and Europe for the treatment of biliary

Table 1. Potential therapeutic interventions, their targets, and predicted effect.

Drug	Target	Predicted Effect
Danazol, Stanozolol	SERPING1	Reduce Bradykinin production
Icatibant	BKB2R	Reduce Bradykinin signaling
Ecallantide	KLKB1	Reduce Bradykinin production
Beriner, Cinryze, Haegarda	SERPING1	Reduce Bradykinin production
Vitamin D	REN	Reduce Renin production
Hymecromone	HAS1, HAS2, HAS3	Reduce hyaluronan
Timbetasin	TMSB4X	Increase fibrinolysis

spasm. However, it can cause diarrhea with subsequent hypokalemia, so considerable caution should be used if this were to be tried with COVID-19 patients (*NCATS Inxight, 2020*). As mentioned above, Timbetasin may reduce COVID-19 related coagulopathies by increasing fibrinolysis.

The testing of any of these pharmaceutical interventions should be done in well-designed clinical trials. Given the likely future outbreaks of zoonotic viruses with a similar outcome, it would be in the best interest long-term to invest in the development of small molecules that can inhibit the virus from replicating or suppressing the host immune system such as a 3CL^{Pro} inhibitor. However, to date, no large multi-centered, randomized, placebo controlled, blinded clinical trials have been done with 3CL^{Pro} inhibitors (*Sisay, 2020*). In the meantime, our analyses suggest that prevention and treatment centered on vascular hyper-permeability and the suppression of hyaluronan may prove beneficial in fighting the pathogenesis of COVID-19. Given the fact that two recent studies have validated our model's predictions of hypokalemia (*Lippi et al., 2020*) and Vitamin D deficiency (*Alipio, 2020*) in COVID-19 patients, we suggest that rapid testing of the pharmaceutical interventions discussed above is warranted.

Materials and methods

Gene expression analysis

FASTQ files were downloaded from the Sequence Read Archive (PRJNA605983 and PRJNA434133, metadata: *Supplementary file 1*) at the NCBI and trimmed using the default parameters in CLC Genomics Workbench (20.0.3). RNA-Seq analysis was performed using the latest version of the human transcriptome (GRCh38_latest_rna.fna, 160,062 transcripts to which we appended the SARS-CoV-2 reference genome, MN908947). Mapping parameters were set with a mismatch cost of two, insertion and deletion cost of three, and both length and similarity fraction were set to 0.985. TPMs were generated for all 160,063 transcripts for the nine COVID-19 samples and the 40 controls (*Supplementary file 2*). The resulting transcript mappings for genes of interest were manually inspected to account for any expression artifacts, such as reads mapping solely to repetitive elements such as the *Alu* transposable element or all reads mapping to a UTR or pseudogene therein. Transcripts whose counts came solely from (or were dominated by) reads at repetitive elements were removed from the analysis. For the controls cases we ran an outlier analysis using the *prcomp* function in the R package *factoextra*. Input data were TPM for transcripts that averaged greater than one across all samples (30,102, *Supplementary file 2*).

To test the hypothesis that gene transcripts were differentially expressed in the COVID-19 patients vs controls, the edgeR package was used (*Robinson et al., 2010; McCarthy et al., 2012*). Briefly, normalization factors were determined and the count data were scaled to account for library size according to the package instructions. Then, dispersion was estimated and a negative binomial model was fit to the read counts for each gene. Genewise tests were then performed to test for differential expression. As described below, manual inspection of isoforms determined when there was isoform switching and differential isoform or gene expression was calculated as described above. The *p*-values were adjusted for multiple comparisons using the Benjamini-Hochberg method.

Transcript- vs. Gene-level Analysis

For each of the differentially expressed genes, we plotted transcript-level TPMs across COVID-19 and control individuals for visual inspection and annotation. We collapsed transcripts to the gene-level if (1) all but one of the transcripts had low TPM, (2) different transcripts coded for the same protein, (3) and none of the transcripts were substantially truncated or otherwise altered in any functional domains. Fold change ratios were calculated with mean TPM values.

Annotation network generation

A geneset from the RAS and BK pathways was extracted from log₂ transformed GTEx expression lung data. Pearson correlation values were calculated among these genes and the resulting values clustered using hierarchical and *k*-means clustering of both genes and samples to identify patterns. Four *k*-means was sufficient to partition all of the genes. Two of the four clusters were highly anti-correlated: AGTR1 identified one pattern and AGTR2 identified an anti-correlated cluster. One of the two remaining intermediate clusters was partially correlated to and was subsequently merged with the AGTR1 cluster and the other remaining cluster was partially correlated to and therefore was merged with AGTR2 cluster. The resulting two clusters were annotated with functional terms and cell types in order to create the annotation network seen in *Figure 1*.

H-MAGMA analysis

The chromosomal coordinate for SNPs for each VDR binding site were used to test for chromatin contact with RAS-BK genes of interest in a synthetic GWAS study using H-MAGMA, which allows integration of chromatin interaction data for gene-set analysis (*Sey et al., 2020*). Each coordinate SNP within a VDR binding site was assigned a large population size of 500,000 and a large *p*-value of $1 \times 10^{3-35}$. The gene annotation file mapped all coordinate SNPs to genes that were either in the exonic or promoter region of said gene, or within a related chromatin region in intronic and intergenic regions using Hi-C data from lung tissue (*Schmitt et al., 2016*). With these two data sets, H-MAGMA returned a list of genes in contact with the coordinates of VDR binding sites related to the synthetic GWAS SNPs. H-MAGMA identified six RAS-BK genes of interest, namely in particular: DPP4, BDKRB2, KLK6, KLK7, KLK10, and IKBKG.

Acknowledgements

This research used resources of the Oak Ridge Leadership Computing Facility, which is a DOE Office of Science User Facility supported under Contract DE-AC05-00OR22725. This research used resources of the Compute and Data Environment for Science (CADES) at the Oak Ridge National Laboratory. Funding for systems biology approaches was provided by the Laboratory Directed Research and Development Program of Oak Ridge National Laboratory, managed by UT-Battelle, LLC for the US Department of Energy (LOIS:10074). Funding for diagnostics and therapeutics work was provided by the DOE Office of Science through the National Virtual Biotechnology Laboratory, a consortium of DOE national laboratories focused on response to COVID-19 (which supported the work for potential points of diagnostic and therapeutic intervention), with funding provided by the Coronavirus CARES Act.

Additional information

Funding

Funder	Grant reference number	Author
Oak Ridge National Laboratory	Laboratory Directed Research and Development Program	Michael R Garvin J Izaak Miller Erica T Prates Daniel Jacobson

U.S. Department of Energy	National Virtual Biotechnology Laboratory	Michael R Garvin Christiane Alvarez J Izaak Miller Erica T Prates Angelica M Walker Daniel Jacobson
National Institutes of Health	U24 HL148865	Bruce Aronow

The funders had no role in study design, data collection and interpretation, or the decision to submit the work for publication.

Author contributions

Michael R Garvin, Conceptualization, Data curation, Formal analysis, Investigation, Writing - original draft, Writing - review and editing; Christiane Alvarez, Investigation, Visualization; J Izaak Miller, Data curation, Formal analysis, Investigation, Visualization; Erica T Prates, Conceptualization, Investigation, Writing - original draft, Writing - review and editing; Angelica M Walker, B Kirtley Amos, Formal analysis, Investigation; Alan E Mast, Amy Justice, Investigation, Writing - review and editing; Bruce Aronow, Formal analysis, Investigation, Visualization, Methodology, Writing - original draft, Writing - review and editing; Daniel Jacobson, Conceptualization, Resources, Data curation, Formal analysis, Supervision, Funding acquisition, Investigation, Visualization, Methodology, Writing - original draft, Project administration, Writing - review and editing

Author ORCIDs

Daniel Jacobson  <https://orcid.org/0000-0002-9822-8251>

Decision letter and Author response

Decision letter <https://doi.org/10.7554/eLife.59177.sa1>

Author response <https://doi.org/10.7554/eLife.59177.sa2>

Additional files

Supplementary files

- Supplementary file 1. Patient metadata.
- Supplementary file 2. Sample PCA, TPM and Differential Gene Expression Values for genes in this paper.
- Transparent reporting form

Data availability

FASTQ files are available from the NCBI Sequence Read Archive (PRJNA605983 and PRJNA434133) <https://www.ncbi.nlm.nih.gov/sra> Leinonen, R., Sugawara, H., Shumway, M. and International Nucleotide Sequence Database Collaboration, 2010. The sequence read archive. Nucleic acids research, 39(suppl_1), pp.D19-D21.

The following datasets were generated:

Author(s)	Year	Dataset title	Dataset URL	Database and Identifier
Zhou P	2020	Discovery and characterization of a novel human coronavirus from five patients at the early stage of the Wuhan seafood market pneumonia virus outbreak.	https://www.ncbi.nlm.nih.gov/sra/?term=PRJNA605983	NCBI Sequence Read Archive, PRJNA605983
Mayhew D	2018	Microbiome and Inflammatory Interactions in Obese and Severe Asthmatic Adults	https://www.ncbi.nlm.nih.gov/bioproject/?term=PRJNA434133	NCBI BioProject, PRJNA434133

References

- Adachi T**, Chong J-M, Nakajima N, Sano M, Yamazaki J, Miyamoto I, Nishioka H, Akita H, Sato Y, Kataoka M, Katano H, Tobiume M, Sekizuka T, Itokawa K, Kuroda M, Suzuki T. 2020. Clinicopathologic and immunohistochemical findings from autopsy of patient with COVID-19, Japan. *Emerging Infectious Diseases* **26**:201353. DOI: <https://doi.org/10.3201/eid2609.201353>
- Alipio M**. 2020. Vitamin D supplementation could possibly improve clinical outcomes of patients infected with Coronavirus-2019 (COVID-2019). *SSRN Electronic Journal* **2**:100051. DOI: <https://doi.org/10.2139/ssrn.3571484>
- Araújo RC**, Kettritz R, Fichtner I, Paiva AC, Pesquero JB, Bader M. 2001. Altered neutrophil homeostasis in Kinin B1 receptor-deficient mice. *Biological Chemistry* **382**:91–95. DOI: <https://doi.org/10.1515/BC.2001.014>, PMID: 11258678
- Arendse LB**, Danser AHJ, Poglitsch M, Touyz RM, Burnett JC, Llorens-Cortes C, Ehlers MR, Sturrock ED. 2019. Novel therapeutic approaches targeting the Renin-Angiotensin system and associated peptides in hypertension and heart failure. *Pharmacological Reviews* **71**:539–570. DOI: <https://doi.org/10.1124/pr.118.017129>, PMID: 31537750
- Bai B**, Liu L, Zhang N, Wang C, Jiang Y, Chen J. 2014. Heterodimerization of human apelin and bradykinin 1 receptors: novel signal transduction characteristics. *Cellular Signalling* **26**:1549–1559. DOI: <https://doi.org/10.1016/j.cellsig.2014.03.022>, PMID: 24686079
- Bai F**, Pang XF, Zhang LH, Wang NP, McKallip RJ, Garner RE, Zhao ZQ. 2016. Angiotensin II AT1 receptor alters ACE2 activity, eNOS expression and CD44-hyaluronan interaction in rats with hypertension and myocardial fibrosis. *Life Sciences* **153**:141–152. DOI: <https://doi.org/10.1016/j.lfs.2016.04.013>, PMID: 27085217
- Barton LM**, Duval EJ, Stroberg E, Ghosh S, Mukhopadhyay S. 2020. COVID-19 autopsies, Oklahoma, USA. *American Journal of Clinical Pathology* **153**:725–733. DOI: <https://doi.org/10.1093/ajcp/aqaa062>, PMID: 32275742
- Bernstein KE**, Khan Z, Gianì JF, Cao DY, Bernstein EA, Shen XZ. 2018. Angiotensin-converting enzyme in innate and adaptive immunity. *Nature Reviews Nephrology* **14**:325–336. DOI: <https://doi.org/10.1038/nrneph.2018.15>, PMID: 29578208
- Bhagat R**, Forteza RM, Calcote CB, Williams WT, Bigler SA, Dwyer TM. 2012. Pulmonary emboli from therapeutic sodium hyaluronate. *Respiratory Care* **57**:1670–1673. DOI: <https://doi.org/10.4187/respcare.01666>, PMID: 22417476
- Bielecka-Dabrowa A**, Mikhailidis DP, Jones L, Rysz J, Aronow WS, Banach M. 2012. The meaning of hypokalemia in heart failure. *International Journal of Cardiology* **158**:12–17. DOI: <https://doi.org/10.1016/j.ijcard.2011.06.121>, PMID: 21775000
- Bikle DD**. 2014. Vitamin D metabolism, mechanism of action, and clinical applications. *Chemistry & Biology* **21**:319–329. DOI: <https://doi.org/10.1016/j.chembiol.2013.12.016>, PMID: 24529992
- Carey RM**. 2017. Blood pressure and the renal actions of AT2 receptors. *Current Hypertension Reports* **19**:21. DOI: <https://doi.org/10.1007/s11906-017-0720-7>
- Chen Z**, Tan F, Erdős EG, Deddish PA. 2005. Hydrolysis of angiotensin peptides by human angiotensin I-converting enzyme and the resensitization of B2 kinin receptors. *Hypertension* **46**:1368–1373. DOI: <https://doi.org/10.1161/01.HYP.0000188905.20884.63>, PMID: 16246972
- Chen Y**. 2020. The novel severe acute respiratory syndrome coronavirus 2 (SARS-CoV-2) Directly decimates human spleens and lymph nodes.. *medRxiv*. DOI: <https://doi.org/10.1101/2020.03.27.20045427>
- Chin AWH**, Chu JTS, Perera MRA, Hui KPY, Yen H-L, Chan MCW, Peiris M, Poon LLM. 2020. Stability of SARS-CoV-2 in different environmental conditions. *The Lancet Microbe* **1**:e10. DOI: [https://doi.org/10.1016/S2666-5247\(20\)30003-3](https://doi.org/10.1016/S2666-5247(20)30003-3)
- Cholankeril G**. 2020. High prevalence of concurrent gastrointestinal manifestations in patients with SARS-CoV-2: early experience from California. *Gastroenterology* **5085**:30471–30476. DOI: <https://doi.org/10.1053/j.gastro.2020.04.008>
- Cowman MK**, Matsuoka S. 2005. Experimental approaches to hyaluronan structure. *Carbohydrate Research* **340**:791–809. DOI: <https://doi.org/10.1016/j.carres.2005.01.022>, PMID: 15780246
- Cyr M**, Lepage Y, Blais C, Gervais N, Cugno M, Rouleau JL, Adam A. 2001. Bradykinin and des-Arg(9)-bradykinin metabolic pathways and kinetics of activation of human plasma. *American Journal of Physiology. Heart and Circulatory Physiology* **281**:H275–H283. DOI: <https://doi.org/10.1152/ajpheart.2001.281.1.H275>, PMID: 11406494
- Dancer RC**, Parekh D, Lax S, D'Souza V, Zheng S, Bassford CR, Park D, Bartis DG, Mahida R, Turner AM, Sapey E, Wei W, Naidu B, Stewart PM, Fraser WD, Christopher KB, Cooper MS, Gao F, Sansom DM, Martineau AR, et al. 2015. Vitamin D deficiency contributes directly to the acute respiratory distress syndrome (ARDS). *Thorax* **70**:617–624. DOI: <https://doi.org/10.1136/thoraxjnl-2014-206680>, PMID: 25903964
- Driggin E**, Madhavan MV, Bikdeli B, Chuich T, Laracy J, Biondi-Zoccai G, Brown TS, Der Nigoghossian C, Zidar DA, Haythe J, Brodie D, Beckman JA, Kirtane AJ, Stone GW, Krumholz HM, Parikh SA. 2020. Cardiovascular considerations for patients, health care workers, and health systems during the COVID-19 pandemic. *Journal of the American College of Cardiology* **75**:2352–2371. DOI: <https://doi.org/10.1016/j.jacc.2020.03.031>, PMID: 32201335
- Dubois EA**, Cohen AF. 2010. Icatibant. *British Journal of Clinical Pharmacology* **69**:425–426. DOI: <https://doi.org/10.1111/j.1365-2125.2010.03642.x>, PMID: 20573077

- Erdős EG**, Jackman HL, Brovkovich V, Tan F, Deddish PA. 2002. Products of angiotensin I hydrolysis by human cardiac enzymes potentiate bradykinin. *Journal of Molecular and Cellular Cardiology* **34**:1569–1576. DOI: <https://doi.org/10.1006/jmcc.2002.2080>, PMID: 12505055
- Fan BE**, Chong VCL, Chan SSW, Lim GH, Lim KGE, Tan GB, Mucheli SS, Kuperan P, Ong KH. 2020. Hematologic parameters in patients with COVID-19 infection. *American Journal of Hematology* **95**:E131–E134. DOI: <https://doi.org/10.1002/ajh.25774>, PMID: 32129508
- Farkas H**, Varga L. 2011. Ecallantide is a novel treatment for attacks of hereditary angioedema due to C1 inhibitor deficiency. *Clinical, Cosmetic and Investigational Dermatology* **4**:61–68. DOI: <https://doi.org/10.2147/CCID.S10322>, PMID: 21760740
- Flores-Muñoz M**, Smith NJ, Haggerty C, Milligan G, Nicklin SA. 2011. Angiotensin1-9 antagonises pro-hypertrophic signalling in cardiomyocytes via the angiotensin type 2 receptor. *The Journal of Physiology* **589**:939–951. DOI: <https://doi.org/10.1113/jphysiol.2010.203075>, PMID: 21173078
- Garcia V**, Shkolnik B, Milhau L, Falck JR, Schwartzman ML. 2016. 20-HETE activates the transcription of Angiotensin-Converting enzyme via nuclear Factor-κB translocation and promoter binding. *Journal of Pharmacology and Experimental Therapeutics* **356**:525–533. DOI: <https://doi.org/10.1124/jpet.115.229377>, PMID: 26699146
- Gordon RD**, Wolfe LK, Island DP, Liddle GW. 1966. A diurnal rhythm in plasma renin activity in man. *Journal of Clinical Investigation* **45**:1587–1592. DOI: <https://doi.org/10.1172/JCI105464>, PMID: 4288714
- Goyal P**, Choi JJ, Pinheiro LC, Schenck EJ, Chen R, Jabri A, Satlin MJ, Campion TR, Nahid M, Ringel JB, Hoffman KL, Alshak MN, Li HA, Wehmeyer GT, Rajan M, Reshetnyak E, Hupert N, Horn EM, Martinez FJ, Gulick RM, et al. 2020. Clinical characteristics of Covid-19 in New York city. *New England Journal of Medicine* **382**:2372–2374. DOI: <https://doi.org/10.1056/NEJMc2010419>, PMID: 32302078
- GTE Consortium**. 2013. The Genotype-Tissue expression (GTEx) project. *Nature Genetics* **45**:580–585. DOI: <https://doi.org/10.1038/ng.2653>, PMID: 23715323
- Guo T**, Fan Y, Chen M, Wu X, Zhang L, He T, Wang H, Wan J, Wang X, Lu Z. 2020. Cardiovascular implications of fatal outcomes of patients with coronavirus disease 2019 (COVID-19). *JAMA Cardiology* **27**:e201017. DOI: <https://doi.org/10.1001/jamacardio.2020.1017>
- Hällgren R**, Samuelsson T, Laurent TC, Modig J. 1989. Accumulation of hyaluronan (hyaluronic acid) in the lung in adult respiratory distress syndrome. *American Review of Respiratory Disease* **139**:682–687. DOI: <https://doi.org/10.1164/ajrccm/139.3.682>, PMID: 2923370
- Han SW**, Park MJ, Lee SH. 2019. Hyaluronic acid-induced diffuse alveolar hemorrhage: unknown complication induced by a well-known injectable agent. *Annals of Translational Medicine* **7**:13. DOI: <https://doi.org/10.21037/atm.2018.11.51>, PMID: 30788360
- Harada H**, Takahashi M. 2007. CD44-dependent intracellular and extracellular catabolism of hyaluronic acid by hyaluronidase-1 and -2. *Journal of Biological Chemistry* **282**:5597–5607. DOI: <https://doi.org/10.1074/jbc.M608358200>, PMID: 17170110
- Helms J**, Kremer S, Merdji H, Clere-Jehl R, Schenck M, Kummerlen C, Collange O, Boulay C, Fafi-Kremer S, Ohana M, Anheim M, Meziani F. 2020. Neurologic features in severe SARS-CoV-2 infection. *New England Journal of Medicine* **382**:2268–2270. DOI: <https://doi.org/10.1056/NEJMc2008597>, PMID: 32294339
- Hofman Z**, de Maat S, Hack CE, Maas C. 2016. Bradykinin: inflammatory product of the coagulation system. *Clinical Reviews in Allergy & Immunology* **51**:152–161. DOI: <https://doi.org/10.1007/s12016-016-8540-0>, PMID: 27122021
- Huang C**, Wang Y, Li X, Ren L, Zhao J, Hu Y, Zhang L, Fan G, Xu J, Gu X, Cheng Z, Yu T, Xia J, Wei Y, Wu W, Xie X, Yin W, Li H, Liu M, Xiao Y, et al. 2020. Clinical features of patients infected with 2019 novel coronavirus in Wuhan, China. *The Lancet* **395**:497–506. DOI: [https://doi.org/10.1016/S0140-6736\(20\)30183-5](https://doi.org/10.1016/S0140-6736(20)30183-5), PMID: 31986264
- Jacox L**, Sindelka R, Chen J, Rothman A, Dickinson A, Sive H. 2014. The extreme anterior domain is an essential craniofacial organizer acting through Kinin-Kallikrein signaling. *Cell Reports* **8**:596–609. DOI: <https://doi.org/10.1016/j.celrep.2014.06.026>, PMID: 25043181
- Jang JG**, Hong KS, Choi EY. 2014. A case of nonthrombotic pulmonary embolism after facial injection of hyaluronic acid in an illegal cosmetic procedure. *Tuberculosis and Respiratory Diseases* **77**:90. DOI: <https://doi.org/10.4046/trd.2014.77.2.90>, PMID: 25237381
- Jin JM**, Bai P, He W, Wu F, Liu XF, Han DM, Liu S, Yang JK. 2020. Gender differences in patients with COVID-19: focus on severity and mortality. *Frontiers in Public Health* **8**:152. DOI: <https://doi.org/10.3389/fpubh.2020.00152>, PMID: 32411652
- Kalinska M**, Meyer-Hoffert U, Kantyka T, Potempa J. 2016. Kallikreins - The melting pot of activity and function. *Biochimie* **122**:270–282. DOI: <https://doi.org/10.1016/j.biochi.2015.09.023>, PMID: 26408415
- Kanasaki K**. 2020. N-acetyl-seryl-aspartyl-lysyl-proline is a valuable endogenous antifibrotic peptide for kidney fibrosis in diabetes: an update and translational aspects. *Journal of Diabetes Investigation* **11**:516–526. DOI: <https://doi.org/10.1111/jdi.13219>, PMID: 31997585
- Kaneiwa T**, Mizumoto S, Sugahara K, Yamada S. 2010. Identification of human hyaluronidase-4 as a novel chondroitin sulfate hydrolase that preferentially cleaves the galactosaminidic linkage in the trisulfated tetrasaccharide sequence. *Glycobiology* **20**:300–309. DOI: <https://doi.org/10.1093/glycob/cwp174>, PMID: 19889881
- Kaplan AP**, Ghebrehwet B. 2010. The plasma bradykinin-forming pathways and its interrelationships with complement. *Molecular Immunology* **47**:2161–2169. DOI: <https://doi.org/10.1016/j.molimm.2010.05.010>, PMID: 20580091

- Kjeldsen K.** 2010. Hypokalemia and sudden cardiac death. *Experimental and Clinical Cardiology* **15**:e96–e99. PMID: 21264075
- Lippi G**, South AM, Henry BM. 2020. Electrolyte imbalances in patients with severe coronavirus disease 2019 (COVID-19). *Annals of Clinical Biochemistry: International Journal of Laboratory Medicine* **57**:262–265. DOI: <https://doi.org/10.1177/0004563220922255>, PMID: 32266828
- Long Q-X**, Tang X-J, Shi Q-L, Li Q, Deng H-J, Yuan J, Hu J-L, Xu W, Zhang Y, Lv F-J, Su K, Zhang F, Gong J, Wu B, Liu X-M, Li J-J, Qiu J-F, Chen J, Huang A-L. 2020. Clinical and immunological assessment of asymptomatic SARS-CoV-2 infections. *Nature Medicine* **63**:6. DOI: <https://doi.org/10.1038/s41591-020-0965-6>
- Mao L**, Jin H, Wang M, Hu Y, Chen S, He Q, Chang J, Hong C, Zhou Y, Wang D, Miao X, Li Y, Hu B. 2020. Neurologic manifestations of hospitalized patients with coronavirus disease 2019 in Wuhan, China. *JAMA Neurology* **77**:683–689. DOI: <https://doi.org/10.1001/jamaneurol.2020.1127>
- Marcic B**, Deddish PA, Jackman HL, Erdös EG. 1999. Enhancement of bradykinin and resensitization of its B2 receptor. *Hypertension* **33**:835–843. DOI: <https://doi.org/10.1161/01.hyp.33.3.835>, PMID: 10082496
- McCarthy DJ**, Chen Y, Smyth GK. 2012. Differential expression analysis of multifactor RNA-Seq experiments with respect to biological variation. *Nucleic Acids Research* **40**:4288–4297. DOI: <https://doi.org/10.1093/nar/gks042>, PMID: 22287627
- McKallip RJ**, Fisher M, Do Y, Szakal AK, Gunthert U, Nagarkatti PS, Nagarkatti M. 2003. Targeted deletion of CD44v7 exon leads to decreased endothelial cell injury but not tumor cell killing mediated by interleukin-2-activated cytolytic lymphocytes. *Journal of Biological Chemistry* **278**:43818–43830. DOI: <https://doi.org/10.1074/jbc.M304467200>, PMID: 12904302
- McKallip RJ**, Hagele HF, Uchakina ON. 2013. Treatment with the hyaluronic acid synthesis inhibitor 4-methylumbelliferone suppresses SEB-induced lung inflammation. *Toxins* **5**:1814–1826. DOI: <https://doi.org/10.3390/toxins5101814>, PMID: 24141285
- Modig J**, Hällgren R. 1989. Increased hyaluronic acid production in lung—a possible important factor in interstitial and alveolar edema during general anesthesia and in adult respiratory distress syndrome. *Resuscitation* **17**:223–231. DOI: [https://doi.org/10.1016/0300-9572\(89\)90038-5](https://doi.org/10.1016/0300-9572(89)90038-5), PMID: 2548268
- Mogielnicki A**, Kramkowski K, Hermanowicz JM, Leszczynska A, Przyborowski K, Buczko W. 2014. Angiotensin-(1-9) enhances stasis-induced venous thrombosis in the rat because of the impairment of fibrinolysis. *Journal of the Renin-Angiotensin-Aldosterone System* **15**:13–21. DOI: <https://doi.org/10.1177/1470320313498631>, PMID: 23884911
- Mong MA**, Awkal JA, Marik PE. 2020. Accelerated hyaluronan concentration as the primary driver of morbidity and mortality in high-risk COVID-19 patients: with therapeutic introduction of an oral hyaluronan inhibitor in the prevention of ‘Induced Hyaluronan Storm’ Syndrome. *medRxiv*. DOI: <https://doi.org/10.1101/2020.04.19.20071647>
- Mustafa A**, McKallip RJ, Fisher M, Duncan R, Nagarkatti PS, Nagarkatti M. 2002. Regulation of interleukin-2-induced vascular leak syndrome by targeting CD44 using hyaluronic acid and anti-CD44 antibodies. *Journal of Immunotherapy* **25**:476–488. DOI: <https://doi.org/10.1097/00002371-200211000-00004>, PMID: 12439345
- NCATS Inxight.** 2020. *Drugs — HYMECROMONE*. <https://drugs.ncats.io/substance/3T5NG4Q468>
- Necas J**, Bartosikova L, Brauner P, Kolar J. 2008. Hyaluronic acid (hyaluronan): a review. *Veterinární Medicína* **53**:397–411. DOI: <https://doi.org/10.17221/1930-VETMED>
- Paegelow I**, Werner H, Vietinghoff G, Wartner U. 1995. Release of cytokines from isolated lung strips by bradykinin. *Inflammation Research* **44**:306–311. DOI: <https://doi.org/10.1007/BF02032574>, PMID: 8564529
- Pan L**, Mu M, Yang P, Sun Y, Wang R, Yan J, Li P, Hu B, Wang J, Hu C, Jin Y, Niu X, Ping R, Du Y, Li T, Xu G, Hu Q, Tu L. 2020. Clinical characteristics of COVID-19 patients with digestive symptoms in Hubei, China: a descriptive, Cross-Sectional, multicenter study. *The American Journal of Gastroenterology* **115**:766–773. DOI: <https://doi.org/10.14309/ajg.0000000000000620>, PMID: 32287140
- Patel VB**, Zhong JC, Grant MB, Oudit GY. 2016. Role of the ACE2/Angiotensin 1-7 Axis of the Renin-Angiotensin system in heart failure. *Circulation Research* **118**:1313–1326. DOI: <https://doi.org/10.1161/CIRCRESAHA.116.307708>, PMID: 27081112
- Rentsch CT.** 2020. Covid-19 testing, hospital admission, and intensive care among 2,026,227 united states veterans aged 54-75 years. *medRxiv*. DOI: <https://doi.org/10.1101/2020.04.09.20059964>
- Rigat B**, Hubert C, Alhenc-Gelas F, Cambien F, Corvol P, Soubrier F. 1990. An insertion/deletion polymorphism in the angiotensin I-converting enzyme gene accounting for half the variance of serum enzyme levels. *Journal of Clinical Investigation* **86**:1343–1346. DOI: <https://doi.org/10.1172/JCI114844>, PMID: 1976655
- Robinson MD**, McCarthy DJ, Smyth GK. 2010. edgeR: a bioconductor package for differential expression analysis of digital gene expression data. *Bioinformatics* **26**:139–140. DOI: <https://doi.org/10.1093/bioinformatics/btp616>, PMID: 19910308
- Salska A**, Dziuba M, Salski W, Chizynski K, Zielinska M. 2018. Apelin and atrial fibrillation: the role in the arrhythmia recurrence prognosis. *Disease Markers* **2018**:1–8. DOI: <https://doi.org/10.1155/2018/5285392>, PMID: 29721104
- Sato T**, Suzuki T, Watanabe H, Kadowaki A, Fukamizu A, Liu PP, Kimura A, Ito H, Penninger JM, Imai Y, Kuba K. 2013. Apelin is a positive regulator of ACE2 in failing hearts. *Journal of Clinical Investigation* **123**:5203–5211. DOI: <https://doi.org/10.1172/JCI69608>, PMID: 24177423
- Schmaier AH.** 2002. The plasma kallikrein-kinin system counterbalances the renin-angiotensin system. *Journal of Clinical Investigation* **109**:1007–1009. DOI: <https://doi.org/10.1172/JCI0215490>, PMID: 11956236

- Schmaier AH.** 2016. The contact activation and kallikrein/kinin systems: pathophysiologic and physiologic activities. *Journal of Thrombosis and Haemostasis* **14**:28–39. DOI: <https://doi.org/10.1111/jth.13194>, PMID: 26565070
- Schmitt AD,** Hu M, Jung I, Xu Z, Qiu Y, Tan CL, Li Y, Lin S, Lin Y, Barr CL, Ren B. 2016. A compendium of chromatin contact maps reveals spatially active regions in the human genome. *Cell Reports* **17**:2042–2059. DOI: <https://doi.org/10.1016/j.celrep.2016.10.061>, PMID: 27851967
- Sey NYA,** Hu B, Mah W, Fauni H, McAfee JC, Rajarajan P, Brennand KJ, Akbarian S, Won H. 2020. A computational tool (H-MAGMA) for improved prediction of brain-disorder risk genes by incorporating brain chromatin interaction profiles. *Nature Neuroscience* **23**:583–593. DOI: <https://doi.org/10.1038/s41593-020-0603-0>, PMID: 32152537
- Shi S,** Qin M, Shen B, Cai Y, Liu T, Yang F, Gong W, Liu X, Liang J, Zhao Q, Huang H, Yang B, Huang C. 2020. Association of cardiac injury with mortality in hospitalized patients with COVID-19 in Wuhan, China. *JAMA Cardiology* **25**:e200950. DOI: <https://doi.org/10.1001/jamacardio.2020.0950>
- Sisay M.** 2020. 3CL^{pro} inhibitors as a potential therapeutic option for COVID-19: available evidence and ongoing clinical trials. *Pharmacological Research* **156**:104779. DOI: <https://doi.org/10.1016/j.phrs.2020.104779>, PMID: 32247821
- Skogestad J,** Aronsen JM. 2018. Hypokalemia-Induced arrhythmias and heart failure: new insights and implications for therapy. *Frontiers in Physiology* **9**:1500. DOI: <https://doi.org/10.3389/fphys.2018.01500>, PMID: 30464746
- Stuardo M,** Gonzalez CB, Nualart F, Boric M, Corthorn J, Bhoola KD, Figueroa CD. 2004. Stimulated human neutrophils form biologically active kinin peptides from high and low molecular weight kininogens. *Journal of Leukocyte Biology* **75**:631–640. DOI: <https://doi.org/10.1189/jlb.1103546>, PMID: 14742641
- Studdy PR,** Lapworth R, Bird R. 1983. Angiotensin-converting enzyme and its clinical significance—a review. *Journal of Clinical Pathology* **36**:938–947. DOI: <https://doi.org/10.1136/jcp.36.8.938>, PMID: 6308066
- Su H,** Yang M, Wan C, Yi LX, Tang F, Zhu HY, Yi F, Yang HC, Fogo AB, Nie X, Zhang C. 2020. Renal histopathological analysis of 26 postmortem findings of patients with COVID-19 in China. *Kidney International* **98**:219–227. DOI: <https://doi.org/10.1016/j.kint.2020.04.003>, PMID: 32327202
- The Lancet Haematology.** 2020. COVID-19 coagulopathy: an evolving story. *The Lancet Haematology* **7**:e425. DOI: [https://doi.org/10.1016/S2352-3026\(20\)30151-4](https://doi.org/10.1016/S2352-3026(20)30151-4), PMID: 32470428
- Tuoresmäki P,** Väisänen S, Neme A, Heikkinen S, Carlberg C. 2014. Patterns of genome-wide VDR locations. *PLOS ONE* **9**:e96105. DOI: <https://doi.org/10.1371/journal.pone.0096105>, PMID: 24787735
- Vaidya A,** Williams JS. 2012. The relationship between vitamin D and the renin-angiotensin system in the pathophysiology of hypertension, kidney disease, and diabetes. *Metabolism* **61**:450–458. DOI: <https://doi.org/10.1016/j.metabol.2011.09.007>, PMID: 22075270
- van de Veerdonk FL,** Netea MG, van Deuren M, van der Meer JW, de Mast Q, Brüggemann RJ, van der Hoeven H. 2020. Kallikrein-kinin blockade in patients with COVID-19 to prevent acute respiratory distress syndrome. *eLife* **9**:e57555. DOI: <https://doi.org/10.7554/eLife.57555>, PMID: 32338605
- Wadman M.** 2020. How does coronavirus kill? clinicians trace a ferocious rampage through the body, from brain to toes. *Science* **2**:abc3208. DOI: <https://doi.org/10.1126/science.abc3208>
- Wang D,** Fang L, Shi Y, Zhang H, Gao L, Peng G, Chen H, Li K, Xiao S. 2016. Porcine epidemic diarrhea virus 3C-Like protease regulates its interferon antagonism by cleaving NEMO. *Journal of Virology* **90**:2090–2101. DOI: <https://doi.org/10.1128/JVI.02514-15>, PMID: 26656704
- Wang D,** Hu B, Hu C, Zhu F, Liu X, Zhang J, Wang B, Xiang H, Cheng Z, Xiong Y, Zhao Y, Li Y, Wang X, Peng Z. 2020. Clinical characteristics of 138 hospitalized patients with 2019 novel Coronavirus-Infected Pneumonia in Wuhan, China. *JAMA* **323**:1061–1069. DOI: <https://doi.org/10.1001/jama.2020.1585>
- Wilkerson RG.** 2012. Angioedema in the emergency department: an evidence-based review. *Emergency Medicine Practice* **14**:1–21. PMID: 23137438
- Xu Z,** Shi L, Wang Y, Zhang J, Huang L, Zhang C, Liu S, Zhao P, Liu H, Zhu L, Tai Y, Bai C, Gao T, Song J, Xia P, Dong J, Zhao J, Wang FS. 2020. Pathological findings of COVID-19 associated with acute respiratory distress syndrome. *The Lancet Respiratory Medicine* **8**:420–422. DOI: [https://doi.org/10.1016/S2213-2600\(20\)30076-X](https://doi.org/10.1016/S2213-2600(20)30076-X), PMID: 32085846
- Zhang DD,** Gao ZX, Vio CP, Xiao Y, Wu P, Zhang H, Guo XW, Meng XX, Gu L, Wang JL, Duan XP, Lin DH, Wang WH, Gu R. 2018. Bradykinin stimulates renal Na^+ and K^+ Excretion by Inhibiting the K^+ Channel (Kir4.1) in the Distal Convolute Tubule. *Hypertension* **72**:361–369. DOI: <https://doi.org/10.1161/HYPERTENSIONAHA.118.11070>, PMID: 29915013
- Zhou P,** Yang XL, Wang XG, Hu B, Zhang L, Zhang W, Si HR, Zhu Y, Li B, Huang CL, Chen HD, Chen J, Luo Y, Guo H, Jiang RD, Liu MQ, Chen Y, Shen XR, Wang X, Zheng XS, et al. 2020. A pneumonia outbreak associated with a new coronavirus of probable bat origin. *Nature* **579**:270–273. DOI: <https://doi.org/10.1038/s41586-020-2012-7>, PMID: 32015507