

Trinity University

Digital Commons @ Trinity

Geosciences Faculty Research

Geosciences Department

6-1-2021

Arsenic in Petroleum-Contaminated Groundwater Near Bemidji, Minnesota is Predicted to Persist for Centuries

Brady A. Ziegler

Trinity University, bziegler@trinity.edu

G. H. Crystal Ng

I. M. Cozzarelli

A. J. Dunshee

M. E. Schreiber

Follow this and additional works at: https://digitalcommons.trinity.edu/geo_faculty



Part of the [Earth Sciences Commons](#)



Repository Citation

Ziegler, B. A., Crystal Ng, G.-H., Cozzarelli, I. M., Dunshee, A. J., & Schreiber, M. E. (2021). Arsenic in petroleum-contaminated groundwater near Bemidji, Minnesota is predicted to persist for centuries. *Water*, 13(11), Article 1485. <http://doi.org/10.3390/w13111485>

This Article is brought to you for free and open access by the Geosciences Department at Digital Commons @ Trinity. It has been accepted for inclusion in Geosciences Faculty Research by an authorized administrator of Digital Commons @ Trinity. For more information, please contact jcostanz@trinity.edu.

Article

Arsenic in Petroleum-Contaminated Groundwater near Bemidji, Minnesota Is Predicted to Persist for Centuries

Brady A. Ziegler^{1,2}, G.-H. Crystal Ng^{3,4}, Isabelle M. Cozzarelli⁵ , Aubrey J. Dunshee³ and Madeline E. Schreiber^{2,*} 

¹ Department of Geosciences, Trinity University, San Antonio, TX 78212, USA; bziegler@trinity.edu

² Department of Geosciences, Virginia Tech, Blacksburg, VA 24061, USA

³ Department of Earth & Environmental Sciences, University of Minnesota, Minneapolis, MN 55455, USA; gcng@umn.edu (G.-H.C.N.); duns0034@umn.edu (A.J.D.)

⁴ Saint Anthony Falls Laboratory, University of Minnesota, Minneapolis, MN 55455, USA

⁵ U.S. Geological Survey, Reston, VA 20192, USA; icozzare@usgs.gov

* Correspondence: mschreib@vt.edu; Tel.: +1-540-231-6521

Abstract: We used a reactive transport model to investigate the cycling of geogenic arsenic (As) in a petroleum-contaminated aquifer. We simulated As mobilization and sequestration using surface complexation reactions with Fe(OH)₃ during petroleum biodegradation coupled with Fe-reduction. Model results predict that dissolved As in the plume will exceed the U.S. and EU 10 µg/L drinking water standard for ~400 years. Non-volatile dissolved organic carbon (NVDOC) in the model promotes As mobilization by exerting oxygen demand, which maintains anoxic conditions in the aquifer. After NVDOC degrades, As re-associates with Fe(OH)₃ as oxygenated conditions are re-established. Over the 400-year simulation, As transport resembles a “roll front” in which: (1) arsenic sorbed to Fe(OH)₃ is released during Fe-reduction coupled to petroleum biodegradation; (2) dissolved As resorbs to Fe(OH)₃ at the plume’s leading edge; and (3) over time, the plume expands, and resorbed As is re-released into groundwater. This “roll front” behavior underscores the transience of sorption as an As attenuation mechanism. Over the plume’s lifespan, simulations suggest that As will contaminate more groundwater than benzene from the oil spill. At its maximum, the model simulates that ~5.7× more groundwater will be contaminated by As than benzene, suggesting that As could pose a greater long-term water quality threat than benzene in this petroleum-contaminated aquifer.



Citation: Ziegler, B.A.; Ng, G.-H.C.; Cozzarelli, I.M.; Dunshee, A.J.; Schreiber, M.E. Arsenic in Petroleum-Contaminated Groundwater near Bemidji, Minnesota Is Predicted to Persist for Centuries. *Water* **2021**, *13*, 1485. <https://doi.org/10.3390/w13111485>

Academic Editors: Lucila Candela and Iñaki Vadillo

Received: 6 April 2021

Accepted: 22 May 2021

Published: 26 May 2021

Publisher’s Note: MDPI stays neutral with regard to jurisdictional claims in published maps and institutional affiliations.



Copyright: © 2021 by the authors. Licensee MDPI, Basel, Switzerland. This article is an open access article distributed under the terms and conditions of the Creative Commons Attribution (CC BY) license (<https://creativecommons.org/licenses/by/4.0/>).

Keywords: arsenic; surface complexation; oil; biodegradation; iron reduction; sorption; reactive transport modeling

1. Introduction

Arsenic (As) is a common geogenic groundwater contaminant that originates in the sediments and rocks that comprise aquifer matrices. It is a known toxin and carcinogen associated with development of skin, bladder, and lung cancer [1]. Arsenic is regulated in drinking water at 10 µg/L in the United States [2] and in the European Union.

Although geogenic As can be released from sediments and rocks to groundwater through several mechanisms, the dominant process attributed to widespread groundwater contamination by As is a reductive dissolution of As-bearing ferric (Fe(III))-oxides coupled with microbial oxidation (i.e., biodegradation) of organic carbon (C) [3–5]. Recent work has highlighted four factors that are critical for accurate long-term assessments of groundwater contaminated by As via this mechanism [6]: (1) the source and biodegradability of organic C that drive Fe-reduction and subsequent As mobilization [7–11]; (2) the mineralogy, reactivity, and As content of Fe-oxide minerals [12–15]; (3) the retention of mobilized As by incorporation in secondary mineral phases and/or resorption of As to sediment mineral surfaces [7,16,17]; and (4) the groundwater flow rate [4,17–19].

Reactive transport models have been used over the past decade to simulate As mobilization due to biodegradation of natural [20–25] and anthropogenic [26,27] organic C. One challenge for modeling studies is obtaining sufficient spatial and temporal data from a single site to accurately characterize hydrologic and geochemical processes. This study aims to overcome these challenges by creating a model to simulate As cycling at an intensively studied oil spill site near Bemidji, Minnesota (MN), where detailed hydrogeology and decades of spatially dense data describing sediment and groundwater chemistry are used to constrain the model.

In this study, we built upon a previously published reactive transport model of the Bemidji oil spill site [28] to examine the release of geogenic As that occurs during Fe-reduction coupled with the biodegradation of petroleum hydrocarbons. The reactive transport model took a comprehensive approach to describe biodegradation of benzene, ethylbenzene, xylenes (B, E, X), toluene, non-volatile dissolved organic C, short-chain *n*-alkanes, and long-chain *n*-alkanes, coupled with different terminal electron accepting processes (TEAPs) (e.g., aerobic respiration, manganese reduction, Fe-reduction, and methanogenesis) and was informed by decades of field observations for organic and inorganic constituents from the contaminated aquifer [28]. Arsenic was not included in the original model because the release of As to groundwater at the Bemidji site was not documented until later [29]. Thus, we saw an opportunity to expand on the original model to include surface complexation reactions of As adsorption/desorption to Fe(OH)₃ to simulate the observed phenomenon of As cycling in the petroleum-contaminated aquifer. We used chemical extraction data from previous work [30,31] that characterized Fe mineral phases and reactivity in background sediment and the petroleum-contaminated aquifer. We also incorporated chemical extraction data to characterize the spatial and temporal distribution of As associated with Fe-oxides in the aquifer.

Through building the reactive transport model of As in the Bemidji aquifer, we address the four factors described above [6] for making accurate long-term assessments of As released to groundwater through Fe reduction. First, extensive research has characterized the composition, distribution, and biodegradation of organic C in the Bemidji petroleum hydrocarbon plume [28,32–36]. Second, as described above, Fe mineral reactivity in background sediment and in the contaminant plume in the Bemidji aquifer has been assessed [30,37,38] and studies of Fe mineralogy have quantified the spatiotemporal magnitude and limits of Fe-reduction [39,40]. Third, chemical extractions have been conducted to quasi-mechanistically describe the spatiotemporal distribution of As associated with Fe-oxides during plume evolution [30,31]. Last, groundwater flow rates and hydraulic conductivity have been spatially characterized using particle size analysis, tracer tests, and slug tests [41–44].

After calibrating the model based on ~30 years of field observations, we then conducted long-term simulations to predict future As cycling in the petroleum hydrocarbon plume. These simulations provide critical new knowledge about the long-term effects of As mobilization triggered by petroleum biodegradation, a water quality impact from oil spills that was not documented until recently [29]. This is especially important given the frequency of oil spills. From 2010 through April 2020, ~4100 petroleum pipeline spills were reported in the U.S., resulting in the release of 42 million gallons of petroleum hydrocarbons [45]. In addition, since 2008, the rail transport of oil has increased more than 5100%, leading to more frequent, though smaller magnitude spills. While previous studies [29–31] have identified As mobilization as a potential health and water quality impact at oil spill sites, the long-term consequences of As mobilization at oil spill sites have not yet been evaluated.

Study Site

The study site (Figure 1) located near Bemidji, MN, is a glacially derived surficial alluvial aquifer consisting mostly of sand and gravel with discontinuous low permeability

silt layers and lenses [42]. Groundwater velocity estimates range from 0.05 m/d in low conductivity sediments to 0.5 m/d in coarser units [44].

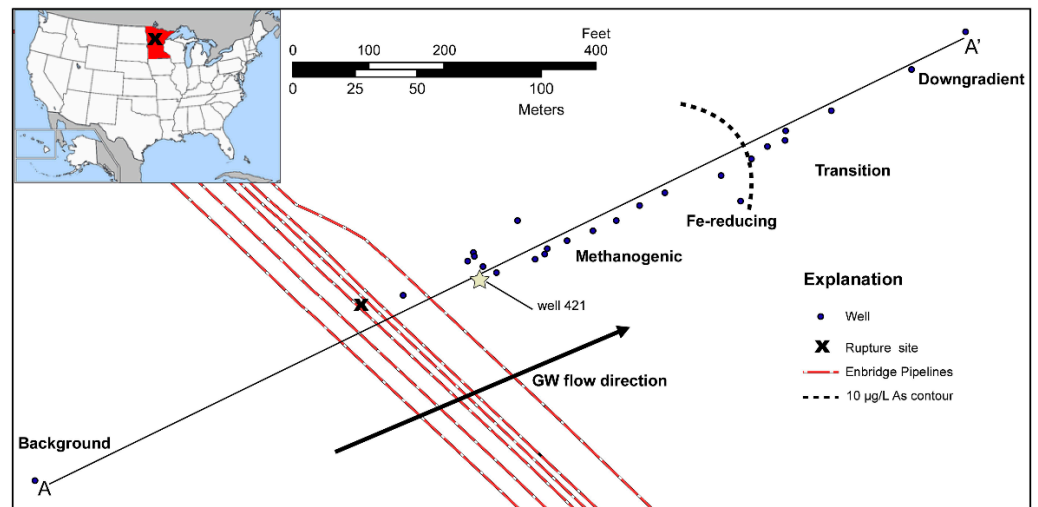


Figure 1. Map of the Bemidji crude oil spill site along the center-line transect of the contaminant plume (A-A'). Blue circles are wells sampled between 2011 and 2015. Well 421 (denoted by a star) is the approximate center of the oil body and is the zero-reference point for this study. Values for background aqueous phases used for initial conditions and constant concentration fluxes are determined from the upgradient well labeled “Background”. The 10 µg/L As contour is from Cozzarelli et al. [29].

In 1979, a pipeline rupture released 10,700 barrels of crude oil to the land surface of the study site [46]. After initial clean-up efforts, approximately 25% of the spilled oil infiltrated into the subsurface and settled on the water table. This oil body remains a source of dissolved organic C in groundwater. Biodegradation of the dissolved organic C is coupled with anaerobic TEAPs including Fe-reduction and methanogenesis [47,48]. Since 1984, the site has been studied extensively to monitor the long-term evolution of the petroleum hydrocarbon plume, the natural attenuation capacity of the aquifer, and secondary water quality impacts such as depleted dissolved oxygen (DO), elevated Fe²⁺, and pH changes triggered by biodegradation of organic C (for a review of research at the Bemidji oil spill site, see [36]).

Recent work from our group documented the mobilization of geogenic As (primarily As(III)) caused by biodegradation coupled with Fe-reduction at the oil spill site [29]. Results from groundwater sampling showed a secondary plume of dissolved As that overlapped with plumes of benzene, dissolved Fe²⁺, and depleted DO. Sediment and groundwater surveys showed Fe and As depletion in sediment near the oil, corresponding to elevated dissolved Fe²⁺ and As in groundwater. Dissolved Fe²⁺ and As decreased along the groundwater flowpath to the leading edge of the petroleum hydrocarbon plume (i.e., transition zone), where As accumulated in sediment by association with Fe(III) in a Fe-rich “curtain” [30,31]. Comparisons of data from 1993 [38], 2008 [49], and 2013–2015 [30] have suggested that Fe(III) in the curtain is reduced as the plume expands, releasing Fe²⁺ and As from the curtain into groundwater [30].

2. Methods

The model presented in this study adds to previous modeling studies of the Bemidji oil spill site that have investigated secondary processes affecting water quality [28,41,50–53]. Here, we use a surface complexation model with As sorption and desorption from Fe(OH)₃ during biodegradation to simulate As cycling in a two-dimensional cross-section along the plume transect (Figure 1). Model simulations were performed using PHT3D (v2.10) [54],

which combines groundwater flow from MODFLOW-2005 (v1.12.00) [55], solute transport from MT3DMS (v5.3) [56], and geochemical reactions from PHREEQC-2 (v2.17) [57].

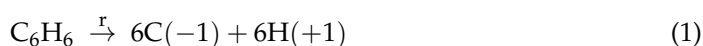
2.1. Model Domain and Hydrogeologic Parameters

The model domain and hydrogeologic parameters are identical to those in the original model [28]. The model simulation covers a 400-year period starting from the occurrence of the spill in August 1979. The model analysis domain is a cross-section of the groundwater plume that extends horizontally from 45 m upgradient from the center of the oil body to 215 m downgradient. The vertical dimension of the domain covers an elevation range of 417 to 424 m above mean sea level, with the upper boundary being the water table. In order to avoid boundary effects during model simulations, the computational grid was further extended to 475 m downgradient and lowered to an elevation of 410 m. Individual cells in the computational grid have dimensions of 4.3 m (horizontal) by 0.47 m (vertical).

Hydrogeologic parameters were informed using grain-size analyses from 269 sediment samples from the aquifer. The arithmetic mean for porosity from these samples was 0.38 (± 0.04) [42]. Given the narrow range in variability, a homogeneous porosity of 0.38 was applied uniformly to the model grid. Hydraulic conductivity (K) in the aquifer is spatially heterogeneous, ranging from 10^{-3} to 10 m/d, with a median of 6.3 m/d based on 58 slug tests [43]. K was applied heterogeneously to the model grid based on geostatistical interpolation of the grain size analyses previously performed on Bemidji sediments [42], with geometric and arithmetic means for K of 5.1 m/d and 6.3 m/d, respectively. Longitudinal and transverse dispersivities were applied uniformly at values of 1 m and 0.04 m, respectively, based on a field tracer test [41]. A steady-state flow field was imposed with a constant head boundary of 424 m above sea level at the left boundary to produce the observed average hydraulic gradient of 0.0035. A constant recharge rate of 4.88×10^{-4} m/d was applied uniformly to the upper water table boundary.

2.2. Geochemical Formulation

The geochemical model uses a partial equilibrium approach, which assumes that organic C oxidation is the rate-limiting step, and the associated reduction reaction proceeds as an equilibrium reaction [58]. Using this approach, an organic molecule is irreversibly broken down into its constitutive elements and oxidation states (in parentheses) at a specified rate, r . An example for benzene is shown in Equation (1):



In this example, one mole of benzene is transformed into six moles of C(−1) and H(+1), which are then reintroduced into the equilibrium solution. C(−1) is converted into HCO_3^- by equilibrium reactions using the most thermodynamically favorable TEAP. All subsequent geochemical reactions then proceed by thermodynamic equilibrium.

The original reactive transport model [28] described in detail the model formulation for biodegradable organic molecules. The chemical composition of the non-aqueous phase liquid (NAPL) is reported in Table S1. Benzene, ethylbenzene, and xylenes were modeled as one component (BEX); toluene, non-volatile dissolved organic C (NVDOC), short-chain *n*-alkanes, and long-chain *n*-alkanes were the other modeled organic constituents. Each constituent had its unique dissolution rate from the NAPL into groundwater and first-order biodegradation rate under different terminal electron accepting processes. These rate parameters were calibrated to match field data from 1987, 1993, and 2008. For a detailed description of the organic biodegradation formulation in the model, we refer the reader to [28].

In addition to simulating reactive transport of organic C, the model also simulates reactions involving inorganic constituents and dissolved gases. A comprehensive list of the modeled inorganic constituents includes aqueous phases (carbonate species, As(V), As(III), Mg^{2+} , Mn^{2+} , Fe^{2+} , Ca^{2+} , Cl^- , Na^+ , and H^+), mineral phases including electron acceptors (MnO_2 and $\text{Fe}(\text{OH})_3$) and carbonate precipitates (CaCO_3 , MnCO_3 , and FeCO_3), dissolved

gases (CO_2 , CH_4 , O_2 , and inert N_2), species sorbed via cation exchange (HX , FeX_2 , and MnX_2), and surface complexes for As(V) (arsenate), As(III) (arsenite), and HCO_3^- . The default PHREEQC database is used for equilibrium reactions and constants for aqueous phases, dissolved gas phases, and most mineral phases. The equilibrium constants for $\text{Fe}(\text{OH})_3$ dissolution and cation exchange were set to the calibrated values from [28].

Surface complexation was modeled using the generalized two-layer model and database described in [59] for As complexed to hydrous ferric oxide (HFO). The two-layer model defines “Type 1” and “Type 2” sites, alternatively termed strong and weak sites, respectively. Type 1 sites, defined in the PHREEQC database as Hfo_s (“_s” denotes “strong”), correspond to a smaller subset of surface sites with a high affinity for cation sorption. Type 2 sites, defined as Hfo_w in the PHREEQC database (“_w” denotes “weak”), are the total reactive sites available for sorption of protons, cations, and anions as determined by observed sorption maxima [59]. To simplify the model, Type 1 sites were excluded because they do not sorb As oxyanions. In our model, HFO was user-defined as $\text{Fe}(\text{OH})_3$. The specific surface area ($600 \text{ m}^2/\text{g}$) and surface site density for Hfo_w (0.2 mol/mol Fe) were from the same database [59].

Complexation of As(V) and As(III) to $\text{Fe}(\text{OH})_3$ is described thermodynamically by empirically derived intrinsic surface complexation constants and acid dissociation constants (Table 1). All complexes are represented as monodentate complexes. Using Reaction 7 in Table 1 as an example, Hfo_wOH represents a single Type 2 sorption site on HFO, and the formation of Hfo_wH₂AsO₄ represents the formation of a monodentate complex of a single arsenate molecule to one Type 2 site on HFO. The best-estimate logK values for surface complexation reactions, as determined by previous studies (see references in Table 1), were used in the model. Upper and lower 95% confidence intervals from those previous studies were used in sensitivity tests (see Section 2.5).

Table 1. Acid dissociation and surface complexation constants and reactions for arsenate, arsenite, and bicarbonate.

	logK	logK −95% C.I. ^b	logK +95% C.I. ^c	Ref.	
Acid dissociation reactions ^a					
1	$H_3AsO_4 = H_2AsO_4^- + H^+$	2.24		[60]	
2	$H_2AsO_4^- = HAsO_4^{2-} + H^+$	6.96		[60]	
3	$HAsO_4^{2-} = AsO_4^{3-} + H^+$	11.5		[60]	
4	$H_3AsO_3 = H_2AsO_3^- + H^+$	9.29			
Surface (de)protonation reactions					
5	$Hfo_wOH + H^+ = Hfo_wOH_2^+$	7.29			
6	$Hfo_wOH = Hfo_wO^- + H^+$	−8.93		[59]	
Arsenate (As(V)) reaction					
7	$Hfo_wOH + AsO_4^{3-} + 3H^+ = Hfo_wH_2AsO_4 + H_2O$	29.31	28.29	30.34	[59]
8	$Hfo_wOH + AsO_4^{3-} + 2H^+ = Hfo_wHAsO_4^- + H_2O$	23.51	23.33	23.7	[59]
9	$Hfo_wOH + AsO_4^{3-} + H^+ = Hfo_wAsO_4^{2-} + H_2O$	18.1			[61]
10	$Hfo_wOH + AsO_4^{3-} = Hfo_wOHAsO_4^{3-}$	10.58	10.01	11.15	[59]
Arsenite (As(III)) reactions					
11	$Hfo_wOH + H_3AsO_3 = Hfo_wH_2AsO_3 + H_2O$	5.41	5.11	5.71	[59]
Bicarbonate reaction					
12	$Hfo_wOH + CO_3^{2-} + 2H^+ = Hfo_wHCO_3 + H_2O$	20.37	19.39	21.35	[62]
	$Hfo_wOH + CO_3^{2-} + H^+ = Hfo_wCO_3^- + H_2O$	12.78	12.58	12.98	[62]

^a Acidity constants correspond to T = 20–25 °C and I = 0. ^b Lower 95% confidence interval for logK value. ^c Upper 95% confidence interval for logK value.

Carbonate complexation is also considered in the surface complexation model (Table 1) because carbonate has been shown to outcompete As for sorption sites and to displace sorbed As [62]. Sulfate and phosphate, which are other potential sorption competitors, are not included because sulfate is only present sporadically at low concentrations (generally 0.5–5 mg/L) and phosphate is below detection (<0.02 mg/L) in the Bemidji aquifer.

Spatiotemporal model output was constrained by multiple dissolved and sediment chemical constituents. Arsenic concentrations were constrained by measured groundwater and sediment concentrations collected along the plume transect from 2011–2015 [29,30,63]. Other parameters (pH, DO, Fe, NVDOC, BEX) were constrained by groundwater and sediment chemistry data collected in 1987, 1993, and 2008 (data reported in [64]). Additional concentration data for pH, DO, and Fe from 2011–2015 were used to constrain the model (data reported in [29,30,63]).

2.3. Initial Conditions

Initial parameters for organic C constituents, including the NAPL density, initial total C mass, and mass fractions of BEX, toluene, NVDOC, short-chain *n*-alkanes, and long-chain *n*-alkanes, are presented in Table S1. For additional details and references for these parameters, we refer the reader to [28].

Initial concentrations for dissolved constituents (total carbonates, CH_4 , Ca^{2+} , Cl^- , Fe^{2+} , Mg^{2+} , Na^+ , DO, Mn^{2+} , N_2 , pH) were determined using measurements from an uncontaminated background well upgradient from the oil spill site (see Figure 1 for the background well location). Concentrations from the background well from six sampling periods between 1986–1995 were averaged and then equilibrated with calcite and charge-balanced using PHREEQC-2 before application in the model. The average background concentrations for these constituents have remained relatively constant; background concentrations measured in the 2010s were similar to those measured in the 1980s and 1990s. Initial model input concentrations and concentrations after equilibration are found in Table 2. Constant concentration flux boundaries with the initial solution chemistry (excluding As) were imposed at the left boundary and water table boundary of the model domain.

Table 2. Initial conditions and background concentrations of inorganic aqueous species. The second column shows average concentrations from an uncontaminated background well, 310e (see Figure 1), located upgradient; the third column shows PHREEQC-2 batch simulation results after equilibrating with calcite, Fe(OH)₃(a), and MnO₂ and establishing charge balance. The equilibrated concentrations were used for constant concentration fluxes at the left and top model boundary. Arsenic was removed from the constant concentration flux boundaries because it was non-detectable (<1 µg/L; <1.35 × 10⁻⁸ M).

Aqueous Phase	Input Background	Equilibrated
As(III) (mol/L; mg/L)	3 × 10 ⁻¹⁰ ; 2.25 × 10 ⁻⁵	0.00; 0.00
As(V) (mol/L; mg/L)	0.00; 0.00	3 × 10 ⁻¹⁰ ; 2.25 × 10 ⁻⁵
Total carbonates (mol/L; mg/L)	3.69 × 10 ⁻³ ; 225	3.65 × 10 ⁻³ ; 222
CH ₄ (mol/L; mg/L)	6.23 × 10 ⁻⁷ ; 9.99 × 10 ⁻³	0.00; 0.00
Ca ²⁺ (mol/L; mg/L)	1.28 × 10 ⁻³ ; 51.7	1.25 × 10 ⁻³ ; 50.1
Cl ⁻ (mol/L; mg/L)	3.10 × 10 ⁻⁴ ; 11.0	3.10 × 10 ⁻⁴ ; 11.0
Fe ²⁺ (mol/L; mg/L)	0.00; 0.00	5.05 × 10 ⁻²⁴ ; 2.8 × 10 ⁻¹⁹
Mg ²⁺ (mol/L; mg/L)	5.95 × 10 ⁻⁴ ; 14.5	5.95 × 10 ⁻⁴ ; 14.5
Na ⁺ (mol/L; mg/L)	7.70 × 10 ⁻⁵ ; 1.77	7.70 × 10 ⁻⁵ ; 1.77
O ₂ (mol/L; mg/L)	4.94 × 10 ⁻⁴ ; 15.8	4.92 × 10 ⁻⁴ ; 15.7
Mn ²⁺ (mol/L; mg/L)	0.00; 0.00	0.00; 0.00
N ₂ (mol/L; mg/L)	4.49 × 10 ⁻⁴ ; 12.6	4.49 × 10 ⁻⁴ ; 12.6
pH (standard units)	7.72	7.63
pe (standard units)	14.47	14.30

The initial Fe(OH)₃ concentration was constrained by digesting uncontaminated background sediments using 0.5 M HCl, an extraction method that targets operationally defined “easily reducible” Fe(III) from aquifer sediments [30,38,65]. In this study, we characterize this extractable phase as Fe(OH)₃. Extraction data are available in [30] and are summarized below.

Extracted background Fe(III) ranged from 0.0228 to 0.0657 mol/L_v (775–2224 mg/kg), with a mean concentration of 0.0412 mol/L_v (1394 mg/kg), where L_v is the bulk aquifer volume (sediment plus pore space). To determine how much Fe(III) was reducible, we compared HCl-extractable Fe(III) from uncontaminated background sediment with Fe(III) in highly contaminated sediment near the oil body [30]. Low, but measurable, amounts of HCl-extractable Fe(III) remain near the oil body, where the predominant TEAP is methanogenesis, suggesting that some residual HCl-extractable Fe(III) may not be easily reducible by microbes. Thus, for the model, the difference between the average background concentration and the residual Fe(III) near the oil (0.0370 mol/L_v, or 1254 mg/kg) was applied homogeneously to the model domain as the initial reducible Fe(OH)₃. This is an adjustment from the original model, which used an initial concentration of 0.0288 mol/L_v based on higher measured residual Fe(III) near the oil body observed in 1993 [38] compared to residual Fe(III) measured near the oil in 2015, the basis for the current study.

The surface complexation model used to describe As cycling was equilibrated with the dissolved As in the initial solution (Table 2) to approximate observed concentrations of As sorbed to Fe(OH)₃. The initial complexed As concentration was calibrated to the range of sorbed As concentrations determined from a phosphate extraction of background sediment [30], which quantifies operationally defined sorbed As. Based on preliminary model simulations, the initial sorbed As concentration was set to 1.62 × 10⁻² mmol/L_v in the model, which was 60% of the mean phosphate-extractable concentration from background sediment. We determined this was a reasonable initial concentration because the phosphate extraction is not specific to As sorbed to Fe(OH)₃; it will also extract As sorbed to more recalcitrant minerals that would likely not be reduced during biodegradation. Thus, the total measured average phosphate-extractable As would likely be an overestimate of As mobilizable due to biodegradation reactions. After equilibration, two As(V) forms were the predominant complexes: Hfo_wAsO₄²⁻ and Hfo_wOHAsO₄³⁻, due to the circumneutral

pH, with concentrations of 6.43×10^{-3} mmol/L_v and 9.76×10^{-3} mmol/L_v, respectively. These two forms accounted for 99.8% of the initial sorbed As. The forms Hfo_wH₂AsO₄⁻, Hfo_wHAsO₄⁻ and Hfo_wH₂AsO₃ were negligible.

2.4. Calibration Approach

Initial concentrations of sorbed As and Fe(OH)₃ were calibrated so that their concentrations (1) were reasonably similar to observed measurements in background sediments (see description in Section 2.3), and (2) allowed the model to match three key characteristics of the As plume to field measurements: the maximum concentration of dissolved As, the total dissolved As mass, and the location of the 10 µg/L dissolved As front. The first two calibration characteristics were chosen to reflect the overall magnitude of As mobilization. The 10 µg/L front was chosen because it is the regulated maximum contaminant level (MCL) for As in the United States and the European Union. Because of its relevance for groundwater regulation and safety of drinking water, our highest priority for calibration was to accurately simulate the location of the leading edge of the 10 µg/L front.

While we also attempt to accurately simulate spatially distributed As concentrations measured in the As plume, we chose to prioritize the three coarser-scale metrics listed above because As concentrations can fluctuate in individual wells for a variety of reasons that are not related to aquifer processes, including sampling practices [66] and well construction [67–69]. Thus, comparing point-to-point As concentrations is less effective in providing insight into the biogeochemical reactions that influence As than examining these larger-scale plume characteristics.

2.5. Model Sensitivity

We examined the sensitivity of the model output to the three parameters that were modified from, or added to, the original model. They were the initial concentration of Fe(OH)₃ in aquifer sediments, the initial concentration of sorbed As, and intrinsic surface complexation constants for As sorption onto Fe(OH)₃. For the sensitivity tests, the initial concentration of Fe(OH)₃ was adjusted to the minimum and maximum measured values in background sediment. The concentration of sorbed As used in the model was halved and doubled, which was within the range of measured background sorbed As [30]. The intrinsic surface complexation constants for As sorption were adjusted to the upper and lower 95% confidence intervals reported by Dzombak and Morel [59]. Parameter values described in previous sections were used as the “base case” to assess model sensitivity.

We evaluated the model’s sensitivity using the sensitivity coefficient approach [70], which calculates the sensitivity of a dependent variable to a model parameter as the partial derivative of the dependent variable with respect to the model parameter. For easier comparison of different model parameters, the sensitivity coefficient can be normalized to a dimensionless form (Equation (2)):

$$X_{i,k} = \frac{\frac{\partial y_i}{\partial \alpha_k}}{a_k} = \frac{\frac{y_{i,2} - y_{i,1}}{y_{i,1}}}{\frac{\alpha_{k,2} - \alpha_{k,1}}{a_{k,1}}} \quad (2)$$

where $X_{i,k}$ is the sensitivity coefficient of the dependent variable y with respect to the k th independent variable (or parameter) at the i th time point, which in this case is 37 years. $y_{i,1}$ is the base case dependent variable and $y_{i,2}$ is the altered dependent variable; $\alpha_{k,1}$ is the base case independent variable; $\alpha_{k,2}$ is the manipulated independent variable.

3. Results and Discussion

3.1. Calibrated Model Results

3.1.1. Aqueous Species

Simulated aqueous species that are important for As cycling at the Bemidji site (pH, DO, Fe²⁺) are shown for 2016, 37 years after the oil spill (Figure 2). pH is important because the predominant dissolved and sorbed As species are pH-dependent, as is the charge on

$\text{Fe}(\text{OH})_3$ surface sites. Over time, pH decreases in the model, which is attributed to the production of H^+ from methanogenic biodegradation and cation exchange of dissolved cations with surficial H^+ [28] (Figure 2A). For an in-depth discussion of reactions affecting pH in the Bemidji aquifer, see [44]. DO is depleted from groundwater near the oil due to the onset of aerobic biodegradation shortly after the spill occurred (Figure 2B). Fe^{2+} is a byproduct of biodegradation coupled with reductive dissolution of $\text{Fe}(\text{OH})_3$. The Fe^{2+} plume in the 2016 simulation (Figure 2C) has extended 30 m farther downgradient than the previously simulated Fe^{2+} plume for 2007 [28] and is consistent with the observed Fe^{2+} plume shape determined from groundwater sampling in 2013 [29].

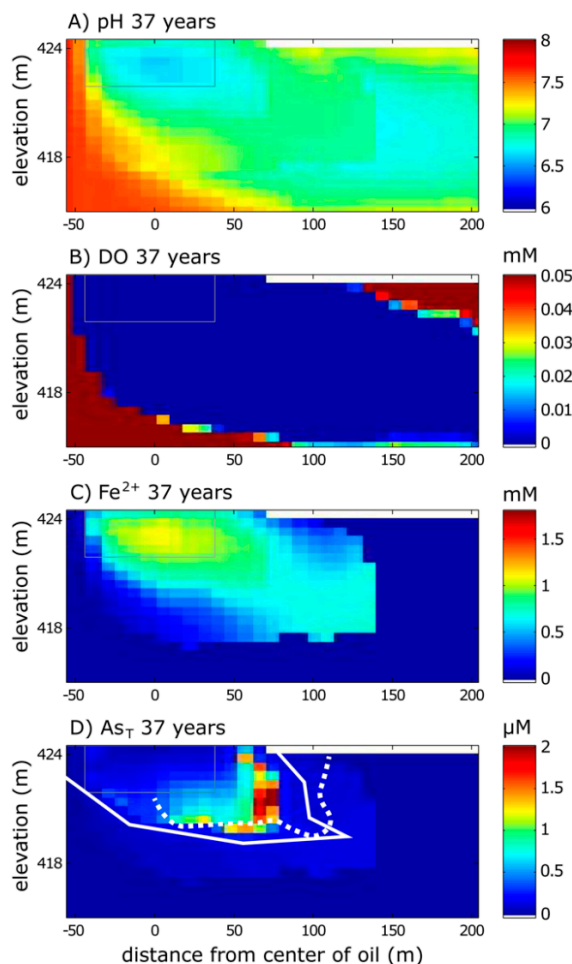


Figure 2. Model simulation results from the calibrated model for (A) pH, (B) DO, (C) dissolved Fe^{2+} , and (D) total dissolved As (As_T) for 37 years after the oil spill (2016). The solid white line for dissolved As_T represents the simulated 10 $\mu\text{g}/\text{L}$ front. The dashed white line for As_T represents the approximate extent of the 10 $\mu\text{g}/\text{L}$ front based on field sampling (data available in [29]). The gray box is the reference for the oil body extent. Top boundary is the water table.

Simulated concentrations of dissolved As are shown as total dissolved As ($\text{As}(\text{III}) + \text{As}(\text{V})$) (Figure 2D). In the model, nearly all dissolved As is $\text{As}(\text{III})$; $\text{As}(\text{V})$ does not exceed 1 $\mu\text{g}/\text{L}$ anywhere in the model domain in 2016, in general agreement with field measurements from 2013 that showed that most As in groundwater (>80%) is $\text{As}(\text{III})$ [29]. The simulated 10 $\mu\text{g}/\text{L}$ front, which was prioritized during calibration, matches the location of the front observed from field sampling within two meters. The total dissolved As mass from the model (0.14 moles) is within the range estimated from groundwater sampling (0.11 to 0.15 moles) [31]. The center of As mass occurs slightly further downgradient (65 m) in the model simulation (Figure 2) compared to the estimated center of mass determined from field sampling (~40 m) [29].

We compared the calibrated model output for As to field samples in two ways. The first was a broad approach, in which we generated cumulative distribution functions comparing the model output concentrations in each cell in the As plume and actual As concentrations measured in the field [63]. This comparison shows that the model reasonably simulates measured As concentrations in groundwater, with nearly all concentrations less than 175 $\mu\text{g/L}$ (Figure 3A). One difference is that the model output has a larger proportion of lower (but non-zero) concentrations compared to field measurements. We attribute this to targeted field sampling aimed at capturing higher concentrations of As in groundwater (i.e., the sampling was not random), causing a shift in the cumulative distribution of field concentrations to higher values. We also note that the simulated maximum concentration of As is nearly twice as high as the observed maximum (428 vs. 230 $\mu\text{g/L}$). However, it is likely that field sampling did not capture the true dissolved As maximum in groundwater. The model results show that this high As concentration is very localized; only a single grid cell showed a concentration greater than 175 $\mu\text{g/L}$ (Figure 3A).

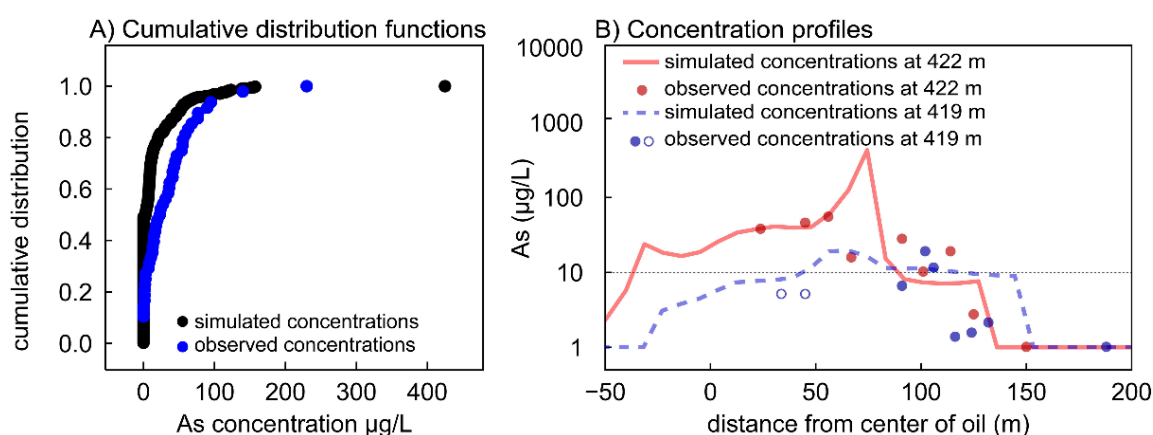


Figure 3. Comparisons of observed As concentrations from well sampling (data in [29,31]) and simulated concentrations from the calibrated model. (A) Cumulative distribution functions for dissolved As concentrations 37 years after the spill. Model simulation data ($n = 480$) are shown in black; observed concentrations from well sampling ($n = 48$) are shown in blue. (B) Arsenic concentration profiles at elevations of 422 m (red), and 419 m (blue) for 37 years after the spill. Simulated concentrations are shown in lines and observed concentrations from well sampling are shown in circles. Open circles designate samples that were reported as $<10 \mu\text{g/L}$, and thus are plotted at half the detection limit. The dashed horizontal line shows the 10 $\mu\text{g/L}$ MCL for As.

Our second approach for comparing modeled vs. measured As concentrations was point-specific. Measured field concentrations along the plume transect were compared to simulated As concentration profiles at two elevations in the plume: 422 m and 419 m above mean sea level. These elevations approximate the vertical center and the bottom of the plume, respectively. The modeled concentration profiles show a reasonably close fit to measured concentrations (Figure 3B) [29,31], with the exception of the simulated As maximum at 422 m elevation, which was not observed during field sampling. Concentrations from other field samples were within $\sim 5 \mu\text{g/L}$ of the simulated concentration.

3.1.2. Solid Phase Species

Model results show that the simulated depletion of $\text{Fe}(\text{OH})_3$ in the aquifer occurs in two distinct zones, which we term a “dual zone effect” (Figure 4). Close to the oil, $\text{Fe}(\text{OH})_3$ is almost entirely depleted from aquifer sediments. Surrounding this area is another zone where $\text{Fe}(\text{OH})_3$ has been only partially depleted. This dual zone effect corresponds almost exactly to the pattern of elevated Fe^{2+} in groundwater (Figure 2C). These patterns are influenced by groundwater pH, which is, in turn, controlled by the predominant TEAP. Near the oil, methanogenic conditions produce H^+ that lower pH (Figure 2A), which thermodynamically promotes Fe-reduction. Immediately downgradient from this zone

of $\text{Fe}(\text{OH})_3$ depletion, only partial depletion of $\text{Fe}(\text{OH})_3$ occurs because the process of Fe-reduction raises pH, which thermodynamically disfavors Fe-reduction.

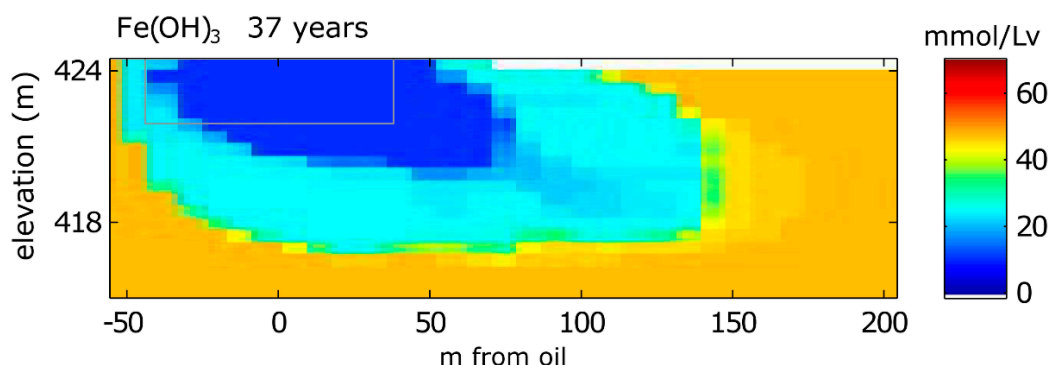


Figure 4. Model simulation results for solid phase concentrations of $\text{Fe}(\text{OH})_3$ in 2016 (37 years after the oil spill). The gray box is the reference for the extent of the oil body. The top boundary is the water table.

The effect of the “dual-zone” of Fe-reduction has confounding effects for As cycling. In the zone closest to the oil, As(V) initially complexed to $\text{Fe}(\text{OH})_3$ (as Hfo_wAsO_4^{2-} , and Hfo_wOHAsO_4^{3-}) is entirely stripped from sediment due to extensive Fe-reduction (Figure 5), creating a plume of dissolved As (Figure 2D). This modeled depletion of As has been observed by chemical extractions of sediments collected from this zone [30]. However, in the zone of partial Fe-depletion, sediments actually appear to be enriched in As via sorption of As(III) as $\text{Hfo_wH}_2\text{AsO}_3$ (Figure 5C), despite the fact that Fe(III) is actively being reductively dissolved. We attribute this As(III) enrichment to the fact that enough residual $\text{Fe}(\text{OH})_3$ remains in this region of the “dual-zone” to sorb As(III) that was stripped from the upgradient part of the “dual-zone”. Sediment samples from cores collected in this part of the plume ($n = 55$) similarly showed spatially heterogeneous sediment-bound As concentrations, ranging from 8.9×10^{-3} to 0.13 mmol/L_v , with a mean of 0.045 mmol/L_v (range = 0.4 to 5.8 mg/kg; mean = 2.05 mg/kg [30]). A subset of these samples ($n = 25$) showed that ~75% of As was sorbed ($\sim 0.033 \text{ mmol/L}_v$; 1.5 mg/kg), slightly higher than the modeled values (up to 0.025 mmol/L_v), though in general agreement (Figure 5).

In the model, some dissolved As breaks through the zone of elevated $\text{Hfo_wH}_2\text{AsO}_3$ and is transported further downgradient, where it is oxidized to form As(V) complexes as Hfo_wAsO_4^{2-} (Figure 5). Interestingly, the modeled DO in this region is ~ 0 (Figure 2B), indicating that the oxidation of As(III) perhaps contributes to DO depletion, or some other unidentified oxidant is responsible for As(III) oxidation. In this zone, the concentration of Hfo_wAsO_4^{2-} is two times greater than background concentration due to resorption (Figure 5). Other As(V) complexes do not contribute to As retention.

3.2. Long-Term Cycling of As in the Petroleum Hydrocarbon Plume

After calibrating the model to field data collected 37 years after the spill, a simulation was run for 400 years to provide insight into the long-term cycling of As. The 400-year simulation results are presented as cross-sectional concentration maps for pH, DO, benzene, ethylbenzene, and xylenes (BEX), non-volatile dissolved organic carbon (NVDOC), Fe^{2+} , $\text{Fe}(\text{OH})_3$, sorbed Fe(II), and siderite (FeCO_3) (Figure 6). Four time periods after the spill are shown: 50 years (2029), 100 years (2079), 150 years (2129), and 200 years (2179). Results after 200 years are not shown because the position of the As plume stabilizes 300 m from the oil, where it attenuates in place for the remainder of the simulation.

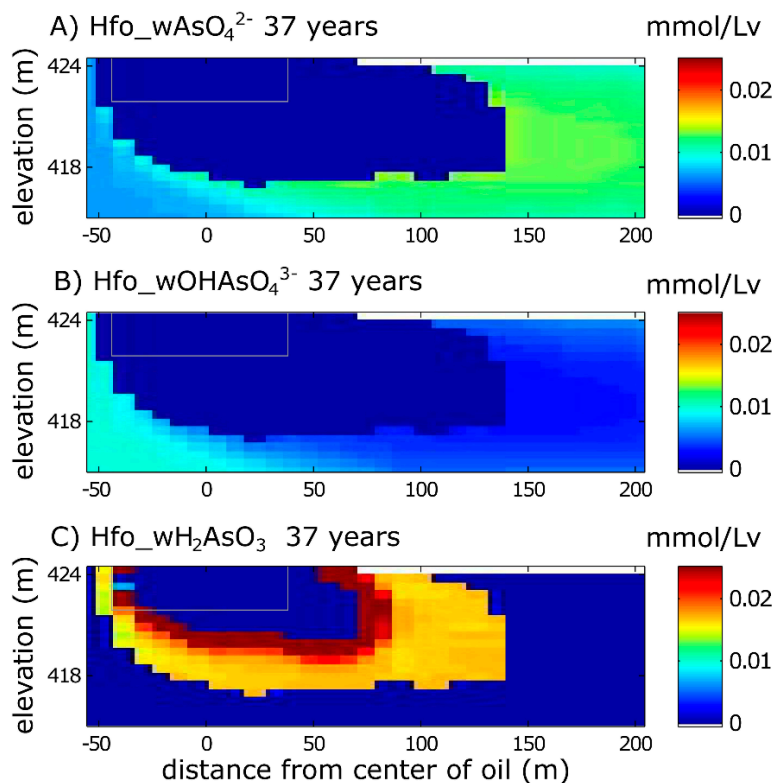


Figure 5. Model simulation results for As(V) and As(III) species sorbed to Fe(OH)₃ in 2016 (37 years after the oil spill). (A) Hfo_wAsO₄²⁻ and (B) Hfo_wOHAsO₄³⁻ are As(V) species; (C) Hfo_wH₂AsO₃ is an As(III) species. Hfo_wH₂AsO₄, Hfo_wHAsO₄⁻ are not shown because they do not participate in As cycling under the conditions of this site. The gray box is the reference for the extent of the oil body. The top boundary is the water table.

Long-term simulation results show that H⁺ produced from methanogenic biodegradation lowers the groundwater pH for 100 years, at which point a pH minimum of ~6.5 occurs near the oil body (Figure 6). Between 100 and 150 years, pH begins to revert to its background condition after NVDOC biodegradation is complete. Without the added acidity from methanogenic NVDOC biodegradation, recharging groundwater from the constant flux boundary at the left model boundary and the water table recharge boundary allows pH to return to near-background conditions.

The plume of depleted DO also expands downgradient as the petroleum hydrocarbon plume evolves over time (Figure 6). DO does not return to background conditions as quickly as pH. In fact, DO remains below background concentrations through the 400-year simulation (data not shown), and the depleted DO plume extends well past the 400 m model domain beyond 200 years. The slower return to background DO is likely due to DO consumption via multiple processes, including aerobic respiration of residual BEX and NVDOC near the oil body. A more important consideration for DO consumption is that the reducing conditions in the plume have created substantial chemical oxygen demand in the aquifer by building up a repository of electron donors in groundwater and sediments. For example, recharging DO from the top and left boundaries oxidizes aqueous Fe²⁺, sorbed Fe(II), and FeCO₃ to Fe(OH)₃. This can be observed by a “halo” of a relative increase in Fe(OH)₃ (note the halo of light blue in the zone of dark blue at 150 years in Figure 6W). This halo region corresponds to a decrease in concentrations of aqueous Fe²⁺ (compare concentrations from 0 to ~75 m in Figure 6R,S), sorbed Fe(II) (compare concentrations from 0 to ~75 m in Figure 6Z,AA), and FeCO₃ (compare concentrations from 0 to ~75 m in Figure 6DD,EE). By 200 years, the halo of increased Fe(OH)₃ extends to greater depths and further downgradient in the model domain. By 200 years, sorbed Fe(II) and FeCO₃ substantially decrease in concentration due to oxidation. Based on these simulations, we

suspect that background DO concentrations will not be reestablished until both biologic and chemical oxygen demand in the aquifer have been satisfied by oxidizing remaining organic and inorganic electron donors in the plume. Model simulations suggest this will take more than 400 years.

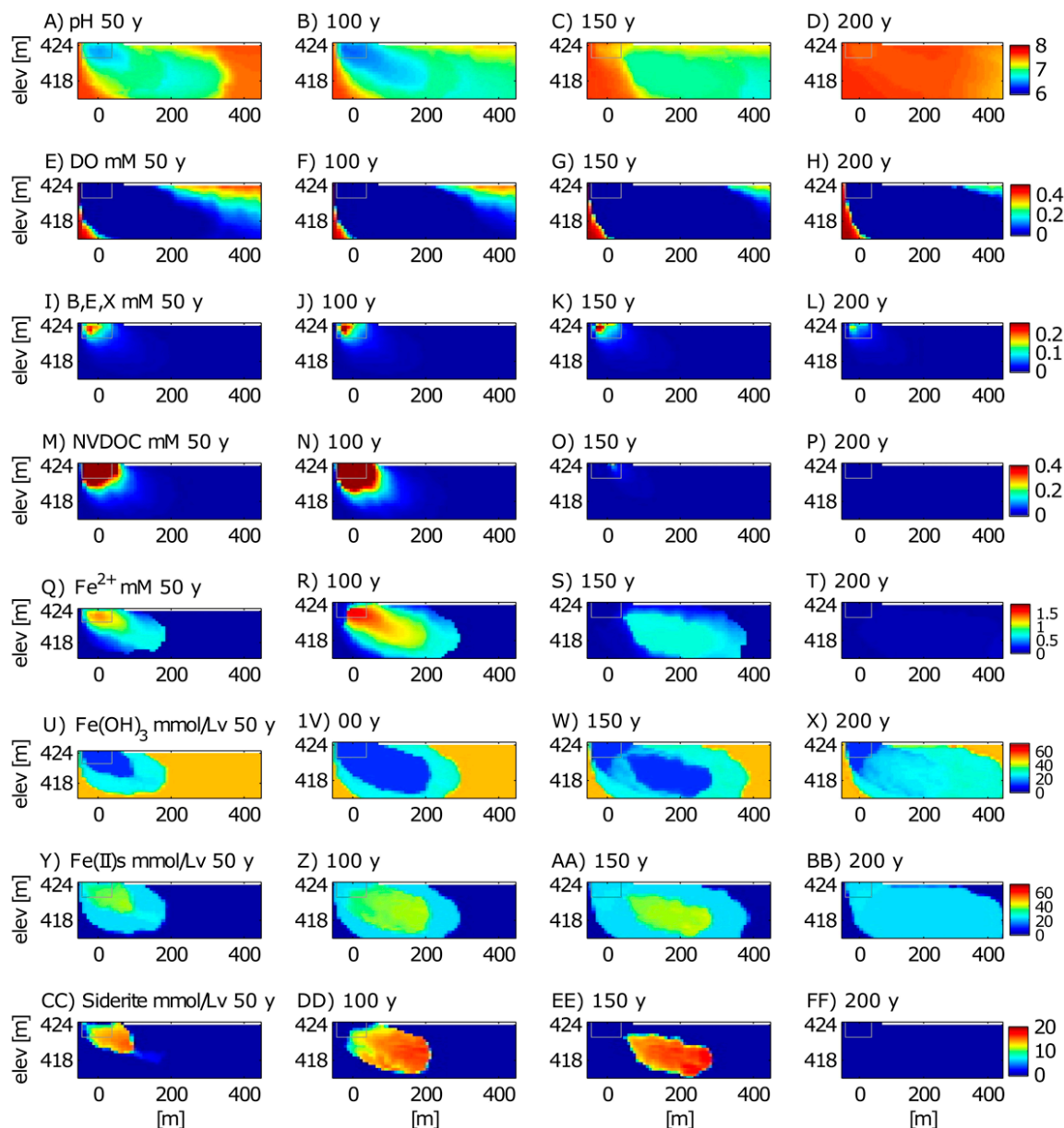


Figure 6. Model simulation results for selected species for the time periods of 50 years (2029), 100 years (2079), 150 years (2129), and 200 years (2179) after the spill. Modeled species include pH (A–D), DO (E–H), cumulative benzene, ethylbenzene, and xylene (BEX) (I–L), non-volatile dissolved organic carbon (NVDOC) (M–P), Fe^{2+} (Q–T), $\text{Fe}(\text{OH})_3$ (U–X), sorbed Fe(II) (Y–BB), and siderite (FeCO_3) (CC–FF). The gray box is the reference for the extent of the oil body. The top boundary is the water table.

In the long-term simulations, As transport displays a “roll front” behavior, in which As is reductively dissolved, released into groundwater, and transported to the plume’s leading edge, where it then sorbs to $\text{Fe}(\text{OH})_3$ (Figure 7). Over time, the plume expands and As is remobilized as As-bearing $\text{Fe}(\text{OH})_3$ reductively dissolves. Then dissolved As is re-attenuated at the plume’s new leading edge further downgradient. This can be seen in the model output by observing changes in the location of the center of As mass, the

10 $\mu\text{g/L}$ front, and the zone of accumulated sorbed As over time. For example, between 50 and 100 years, the center of As mass migrates from ~ 80 m downgradient from the oil body to 200 m, the 10 $\mu\text{g/L}$ front migrates from 128 m to 225 m downgradient, and the zone of accumulated sorbed As migrated from 100–200 m to 200–300 m downgradient (Figure 7). These simulations suggest that the center of As mass migrates faster (average rate of 2.4 m/y) than the 10 $\mu\text{g/L}$ front (average rate of 1.9 m/y) over this timeframe.

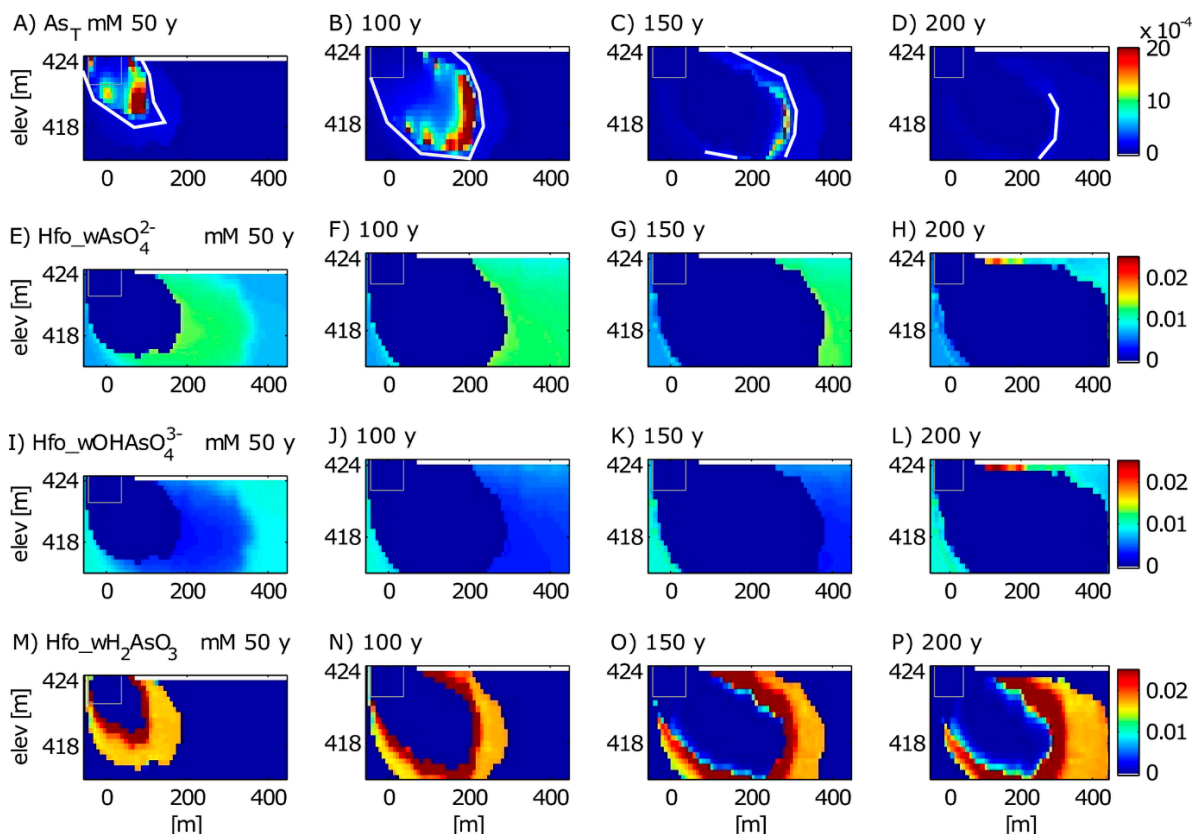


Figure 7. Model simulation results for several As species for the time periods of 50 years (2029), 100 years (2079), 150 years (2129), and 200 years (2179) after the spill. Modeled species include dissolved As (A–D) and sorbed species Hfo_wAsO₄²⁻ (E–H), Hfo_wOHAsO₄³⁻ (I–L), and Hfo_wH₂AsO₃ (M–P). Hfo_wH₂AsO₄, Hfo_wHAsO₄⁻ are omitted because they had negligible concentrations throughout the model. The white line in the dissolved As plots represents the simulated 10 $\mu\text{g/L}$ front. The gray rectangle is the reference for the extent of the oil body. Top boundary is the water table.

By 100 years, the dissolved As mass reaches its simulated maximum of 0.4 moles (Figure 8). From 100 to 150 years, the advancement of the center of mass and the 10 $\mu\text{g/L}$ front slows, corresponding to a substantial loss of dissolved As mass; by 150 years, the total dissolved As mass decreases to 0.08 moles, 20% of the maximum (Figure 8), though concentrations in the center of mass still remain >100 $\mu\text{g/L}$ in some cells. After 150 years, the dissolved As plume begins to stabilize, and the 10 $\mu\text{g/L}$ front reaches 300 m downgradient, where it remains fixed until 387 years, at which time dissolved As in all cells finally reaches concentrations of <10 $\mu\text{g/L}$. During this period, the total mass of dissolved As also stabilizes at 0.02 moles, a 95% decrease from the simulated maximum.

Similar to the 37-year simulation, the long-term model results suggest that the primary mechanism responsible for As retention is sorption of As(III) to Fe(OH)₃ as Hfo_wH₂AsO₃, which forms a ring around the plume fringes (Figure 7M–P). Beyond the ring of sorbed As(III), some oxidized As(V) is also sorbed to Fe(OH)₃ (Figure 7E–H); the predominant sorbed As(V) species is Hfo_wAsO₄²⁻. Close examination of the time series evolution of As surface species provides hints that the As(III) complex is not thermodynamically stable with recharging background groundwater and will not persist indefinitely. Rather, As(III)

complexes will eventually be oxidized to As(V) complexes, serving as another example of chemical oxygen demand. From 50 to 200 years, there is a loss of $\text{Hfo_wH}_2\text{AsO}_3$ and a corresponding increase in Hfo_wAsO_4^{2-} and Hfo_wOHAsO_4^{3-} complexes at the water table boundary, suggesting that DO in recharging groundwater transforms the reduced As(III) complexes to oxidized As(V) complexes. Eventually, we suspect that all As(III) will be transformed back to As(V) complexes, with the predominant complex determined by the groundwater pH. From these simulations, we conclude that the final step in As cycling in the aquifer will be the return of As to As(V) sorbed to $\text{Fe}(\text{OH})_3$, though this process is not yet complete by the end of the 400-year simulation.

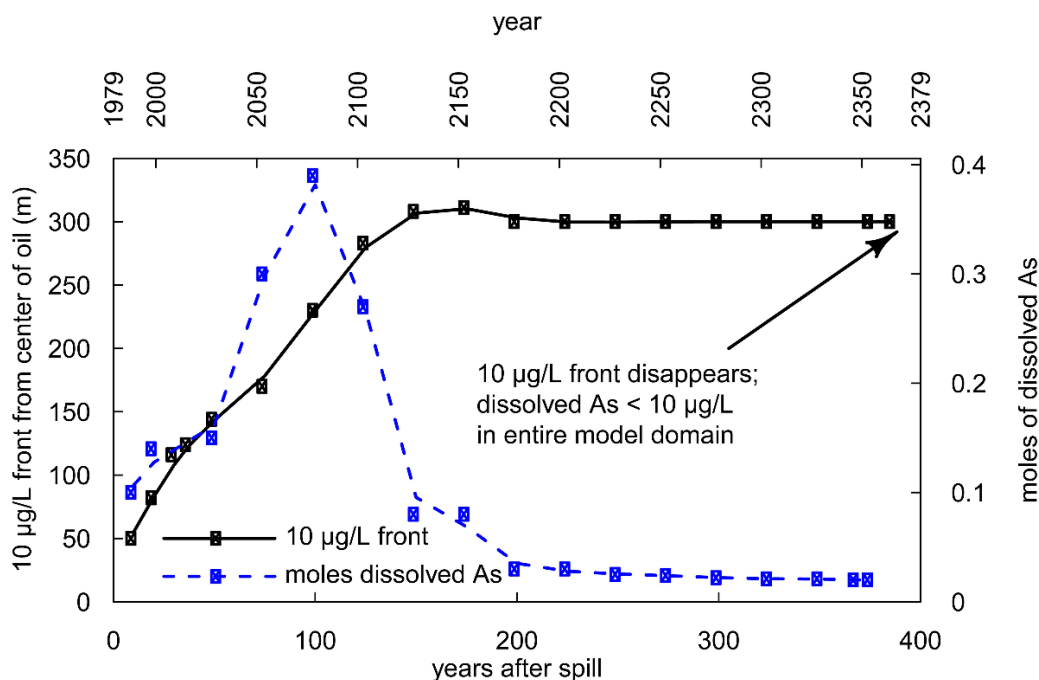


Figure 8. Simulation results for the location of the 10 µg/L front (black) and the total mass of dissolved As (blue) in the model domain over time.

Simulations suggest that the presence of NVDOC is the dominant cause of the persistence of As in groundwater for the first 100 years (Figure 8). While NVDOC is present in groundwater (0–100 years), As remains in groundwater at high concentrations, and the plume migrates downgradient at a steady rate. However, once NVDOC has been biodegraded completely (between 100 and 150 years; Figure 6N,O), the amount of dissolved As decreases (Figure 7B,C and Figure 8). From these observations, we propose that the biodegradation of NVDOC sustains the reducing conditions needed to promote Fe-reduction and As mobilization, resulting in continued release of Fe^{2+} and As into groundwater. However, after NVDOC becomes (nearly) completely biodegraded after 100 years, the dissolved As mass rapidly declines, most likely because $\text{Fe}(\text{OH})_3$ is no longer reductively dissolved due to NVDOC biodegradation. Therefore, more As is being removed from groundwater by sorption at the plume fringes than is being introduced into groundwater via Fe-reduction, causing a net removal of As from groundwater.

3.3. Model Sensitivity

Of the three dependent plume characteristics considered in the sensitivity analysis, the location of the 10 µg/L front was relatively insensitive to any of the independent variables assessed (Table 3). Doubling and halving the initial sorbed As concentration moderately influenced the total dissolved mass and the maximum dissolved As, but they had little effect on the location of the 10 µg/L front. By far, the model was most sensitive to the initial $\text{Fe}(\text{OH})_3$ concentration. In particular, the model is sensitive to underestimations of initial

Fe(OH)₃. Because sorption to Fe(OH)₃ is the main retention mechanism for As, a poorly quantified initial concentration for Fe(OH)₃ can cause substantial errors in simulating As transport by either over- or underestimating sorption sites for As, which then either incorrectly enhances or lessens As retention, respectively. Collecting a robust background dataset will minimize errors that could result from natural heterogeneity and a small sample size.

Table 3. Sensitivity coefficients for model independent variables (logK for surface complexation reactions, initial Fe(OH)₃ concentration, and initial sorbed As concentration) on the model dependent variables (location of the 10 µg/L As front, the total dissolved As mass, and the maximum dissolved As concentration) 37 years after the spill. Sensitivity coefficients were calculated relative to the base case using Equation (2).

Sensitivity of:	logK		Initial Fe(OH) ₃ (mol/L _v)		Initial Sorbed As (mmol/L _v)	
	Base: Mean		Base: 0.0370		Base: 1.62 × 10 ⁻²	
	Decrease	Increase	Decrease	Increase	Decrease	Increase
	log(K) −95% C.I.	log(K) +95% C.I.	Lowest Measured Background: 0.0228	Greatest Measured Background: 0.0657	Half: 3.7 × 10 ⁻²	Double: 3.24 × 10 ⁻²
Location of 10 µg/L As front	−0.46	−0.09	−0.43	−1.05	0.08	0.79
Total dissolved As mass	−0.06	−0.12	−14.36	−0.12	1.01	1.00
Maximum dissolved As	0.08	−0.09	−11.75	2.27	1.02	1.05

Concentration profiles of dissolved As for elevations of 422 m and 419 m above mean sea level (Figure 9) show the sensitivity of our model to alterations in intrinsic surface complexation logK values, initial Fe(OH)₃, initial sorbed As, and two binary scenarios (i.e., “on” vs. “off”): (1) formation of HCO₃[−] surface complexes, and (2) the incorporation of a commonly disregarded As(V) surface complexation reaction (Reaction 9 in Table 1).

The As concentration profiles show that doubling and halving the initial sorbed As and increasing and decreasing complexation logK values had a minimal effect on the distribution of As at 422 m and 419 m elevations (Figure 9), whereas changing the initial concentration of Fe(OH)₃ substantially impacts As concentrations. When the initial concentration is overestimated, the As plume becomes over-attenuated, and the dissolved As maximum at 422 m elevation occurs upgradient from the center of the oil compared to the base model, where the maximum occurs 65 m downgradient. Additionally, the maximum As concentration is an order of magnitude less than the base model and barely exceeds the 10 µg/L threshold. At 419 m elevation, dissolved As never exceeds the 10 µg/L threshold. This under-representation of dissolved As occurs because there is an excess of Fe(OH)₃, and thus, an excess of surface sites to sorb As, which amplifies As attenuation. Underestimating initial Fe(OH)₃ has the opposite effect. At 422 m, the dissolved As maximum occurs at 145 m, 23 m further than the base model, though the As maximum concentration is roughly similar. At a depth of 419 m, the magnitude of As in groundwater is grossly overestimated (note log-scale). These trends occur because there is less Fe(OH)₃, and thus fewer surface sites to sorb As, which allows for more persistent As in groundwater and further As transport. These two scenarios illustrate the critical importance of accurate background sediment chemistry, as an overestimation or underestimation of initial Fe(OH)₃ can cause substantial errors in predicting As mobility.

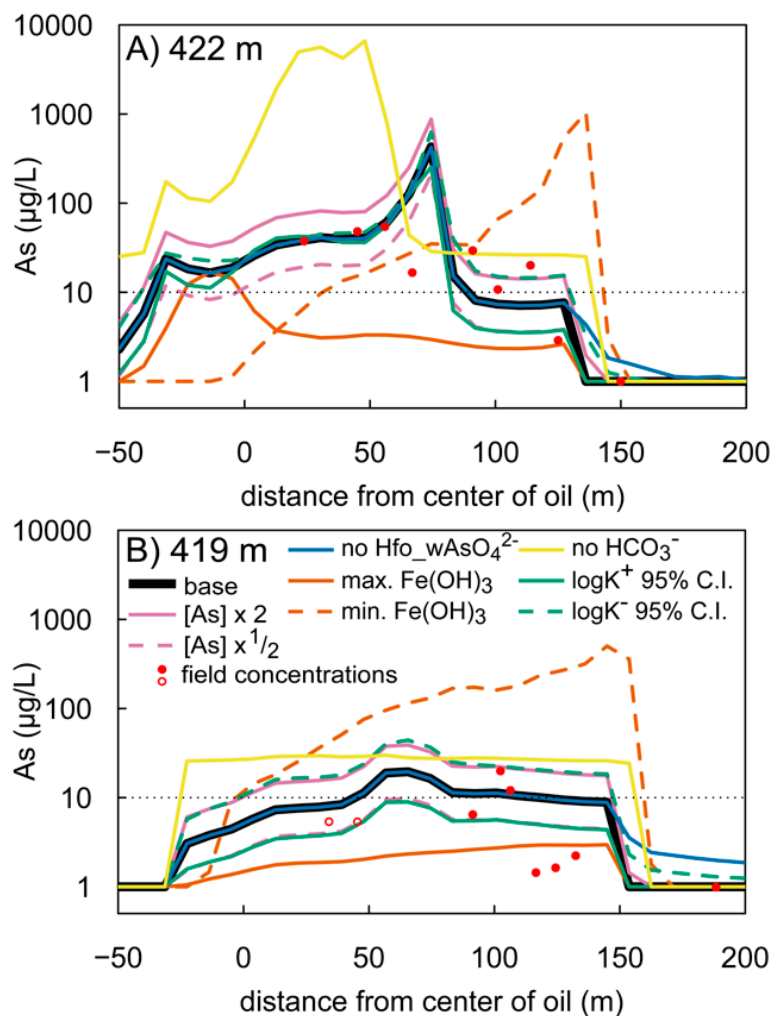


Figure 9. Concentration profiles for dissolved As at elevations of 422 m (**A**), and 419 m (**B**) for 37 years after the spill. Sensitivity scenarios shown include the model base case (black), doubled initial sorbed As (pink, solid), halved initial sorbed As (pink, dashed), upper 95% confidence interval (C.I.) for intrinsic As surface complexation constants (green, solid), lower 95% C.I. for intrinsic As surface complexation constants (green, dashed), maximum measured (orange, solid) and minimum measured (orange, dashed) background $\text{Fe}(\text{OH})_3$ concentration, no complexation of HCO_3^- (gold), and omission of an As(V) surface complexation reaction (Reaction 9 in Table 1) (blue). Field measured As concentrations shown in red circles are from [29]. Open circles designate samples $< 10 \mu\text{g/L}$ and are plotted at half the detection limit. Note that the y-axes are on the logarithmic scale.

The omission of HCO_3^- as a sorption competitor for As can lead to incorrect surface complexation modeling results for As sorption on HFO [62]. In our model, omission of HCO_3^- complexation increases dissolved As at 422 m and 419 m elevation (Figure 9); the effect is particularly pronounced at 422 m, where maximum As concentrations are approximately 80 times greater than the base case. At both elevations, the location of the $10 \mu\text{g/L}$ front is approximately 45 m further downgradient compared to the base model. These results corroborate the findings of other studies that have identified sorption of HCO_3^- as a critical factor to accurately simulate As cycling in groundwater [20,61,62,71].

Some reactive transport models in the published literature that simulate As surface complexation on $\text{Fe}(\text{OH})_3$ do not include the formation of the $\text{Hfo}_w\text{AsO}_4^{2-}$ complex (Reaction 9 in Table 1), likely because a $\log K$ for this reaction does not exist in the Dzombak and Morel surface complexation database [59], which is the standard database for surface complexation modeling on HFO. However, based on thermodynamic data (Table 1), the dominant dissolved and sorbed As(V) species at the pH range of groundwater are HAsO_4^{2-}

and Hfo_wAsO_4^{2-} , respectively (see Figure S1 for relative abundances of As aqueous phases and surface complexes vs. pH). This suggests that the addition of the logK value for this reaction may improve the simulation of As surface complexation in aquifers. For this reason, we included Reaction 9 and its corresponding logK reported in [61].

When Reaction 9 is omitted, there is no deviation in the modeled concentration profiles up to 140–150 m downgradient (Figure 9), likely because As(III) is the dominant sorbed form of As up to this distance. However, downgradient from 140–150 m, As is fully removed from groundwater in the base model due to formation of the Hfo_wAsO_4^{2-} complex. When Reaction 9 is omitted, As is pervasive in groundwater beyond 200 m at both 422 m and 419 m elevations. Because As(III) sorption is the dominant attenuation mechanism in these geochemical conditions, omission of this reaction caused only slight deviations from the base model. However, we suspect model inaccuracies would be amplified if this reaction was omitted from model formulations for scenarios in which As(V) sorption was the main attenuation mechanism.

3.4. Model Limitations

While the model used in this study accounts for biodegradation and secondary reactions that affect water quality, there are multiple limitations that could have confounding effects on As cycling.

The fate of dissolved Fe^{2+} in the transition zone (~125–135 m downgradient from the oil at 37 years), remains unclear in the Bemidji aquifer. Sediment samples collected in the transition zone show spatially heterogeneous Fe(III) concentrations that generally correlate with particle size; sand-and-gravel-sized sediments have similar Fe(III) concentrations as uncontaminated background bulk sediments, whereas silt-sized sediments from heterogeneous lenses were substantially elevated in Fe(III) relative to uncontaminated bulk sediments [30]. Two different interpretations have been proposed to explain this phenomenon. The first is that the fine-grained sediments have low permeability and may be diffusion-controlled. If this is true, groundwater from the plume likely flows around these lenses, and they retain their initial geochemistry, which, compared to coarse sediments, tends to be more abundant in secondary mineral phases like iron oxides due to the larger surface area-to-volume ratio. This interpretation is supported by the observation of persistent Fe(III) in highly contaminated, fine-grained sediment near the oil [72], which suggests that these fine-grained materials may be recalcitrant to plume reactions. A second interpretation is that Fe^{2+} oxidation and precipitation of $\text{Fe}(\text{OH})_3$ occur heterogeneously in the transition zone, with the bulk of reactivity occurring in or adjacent to the fine-grained lenses, catalyzed by the more reactive surface area of fine-grained minerals. This interpretation is supported by the observation of low but detectable DO in the transition zone, generally from 100–1000 $\mu\text{g}/\text{L}$ [29], which spans the range that can oxidize dissolved Fe^{2+} and precipitate $\text{Fe}(\text{OH})_3$.

In its current formulation, the model does not produce the heterogeneous zones of elevated $\text{Fe}(\text{OH})_3$ observed in sediments collected from the transition zone [30]. The postulated higher Fe(III) background signature of fine-grained sediments from the first interpretation was not incorporated into the model because there are insufficient data to constrain background Fe(III) concentrations in fine-grained sediments. Additionally, the model was not able to simulate the low DO concentrations observed in the transition zone, and therefore it does not precipitate $\text{Fe}(\text{OH})_3$ in the transition zone as would be suggested from the second interpretation. Regardless of the mechanism that causes elevated Fe(III) in the transition zone, the mass of $\text{Fe}(\text{OH})_3$ in the model's transition zone is likely an underestimation of the true mass in the aquifer, which would result in an underrepresentation of the aquifer's overall attenuation capacity for As.

The implementation of a homogeneous initial concentration of $\text{Fe}(\text{OH})_3$ in the model is a simplification, as there is natural heterogeneity not just with respect to sediment grain size, but also with respect to the $\text{Fe}(\text{OH})_3$ concentrations within the coarse fraction of sediments themselves. Based on sampling of background bulk sediment, $\text{Fe}(\text{OH})_3$ concentrations can

span a wide range (e.g., 775–2224 mg/kg in one background core [30]), though average background Fe(III) concentrations from two different locations were in close agreement, 1330 mg/kg [38] and 1390 mg/kg [30]. By invoking a homogeneous distribution of Fe(OH)₃ as an initial condition, the model likely neglects some of the finer-scaled nuances in Fe cycling caused by natural heterogeneity, which could affect As cycling.

Given the modeling result that the prevalence of As in groundwater is controlled by the presence of NVDOC, a discussion of the constraints of NVDOC biodegradation is warranted. NVDOC is a complex mixture of organic C of varying chemical structure and bioavailability. Ng et al. [28] and this study generically represent NVDOC as C₁₉H₂₄O₆ and characterize its biodegradation by a first-order rate constant calibrated to measurements from two observation periods. However, given the actual complexity of NVDOC, its biodegradation may follow a different kinetic rate model than that used in the model, which may influence how long As remains in groundwater.

3.5. Human Health Consequences

To assess the relative threats of benzene and As in groundwater over time, we compared changes in their respective plume volumes over the model simulation period (Figure 10). Because benzene, ethylbenzene, and xylene are modeled under a common parameter (BEX), we assumed that 90% of the BEX mixture was benzene based on previous groundwater saturation experiments [73]. In 2013, field observations showed that the plume of benzene exceeding its MCL (5 µg/L) extended ~15 m further downgradient than the plume of As exceeding its MCL (10 µg/L). Otherwise, the plumes were roughly similar in shape and size [29]. Long-term model simulations show that the benzene plume remains relatively stable and eventually retracts toward the oil source. Meanwhile, the As plume continues to migrate downgradient. Generally, the volume of aquifer exceeding the As MCL is greater than the aquifer volume exceeding the benzene MCL (Figure 10). At its maximum (100 years), ~5.7× more groundwater volume exceeds the As MCL than the benzene MCL. Based on these model results, it is possible that As could contaminate more groundwater over a longer period of time than benzene in the Bemidji aquifer.

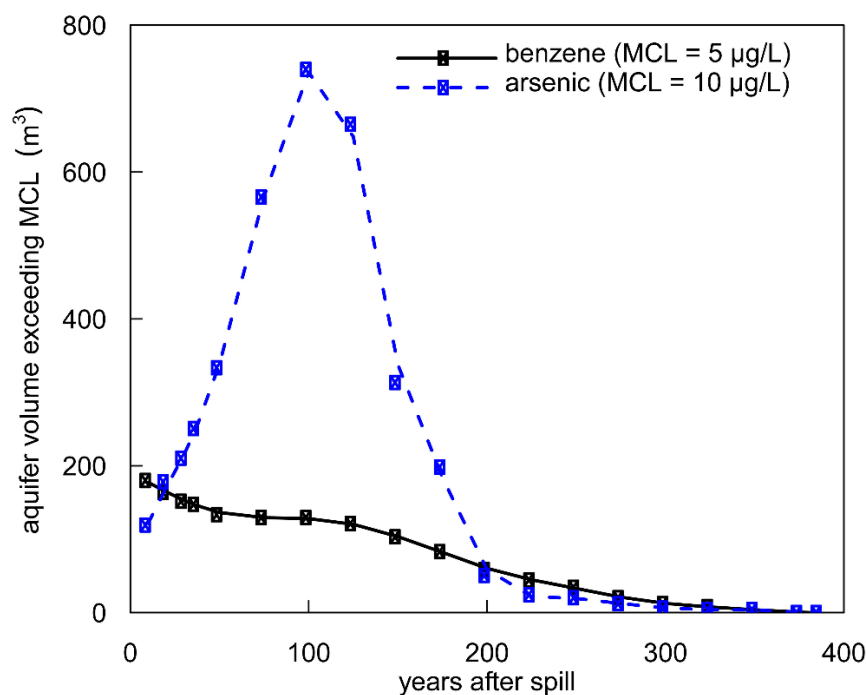


Figure 10. Model simulations for the total aquifer volume, assuming 1 m aquifer thickness, exceeding the maximum contaminant level for benzene (5 µg/L; black) and arsenic (10 µg/L; blue) over time.

This modeling study suggests that over the long-term, the legacy of As in groundwater may become a greater threat than petroleum hydrocarbons from a human health perspective for three reasons: (1) simulated As is transported further downgradient and contaminates groundwater further from the oil source than petroleum hydrocarbons, which biodegrade and retract to the oil source; (2) the aquifer volume that exceeds the As MCL is greater than the aquifer volume that exceeds the benzene MCL over the 400-year simulation period; and (3) after biodegradation, petroleum hydrocarbons are fully removed from the aquifer, whereas sorbed As can be remobilized if a new source of biodegradable organic carbon is introduced. Regulatory agencies are charged with monitoring petroleum hydrocarbons, including benzene, in groundwater near oil spill sites, but As is not generally considered as a contaminant of concern at these sites, and therefore, agencies may not monitor for geogenic As mobilization as a consequence of petroleum hydrocarbon biodegradation. In effect, this might allow As to routinely go undetected at oil spill sites.

Arsenic is widespread in aquifer sediments throughout the U.S. and worldwide [5,74]. Recent calculations show that essentially any aquifer has enough natural As to cause unsafe concentrations in drinking water if geochemical conditions promote As release from aquifer sediments to groundwater [31]. Although few other studies have quantitatively examined As fate in petroleum hydrocarbon plumes, several studies have found that As is released from aquifers under enhanced bioremediation conditions where organic carbon, such as whey, is added to stimulate reduction of chlorinated hydrocarbons [75–78]. These results, combined with our modeling results, underscore the importance of examining the long-term water quality and health consequences of As at sites with biodegradable organic carbon, including, but not limited to, sites with oil spills, injections of carbon for enhanced bioremediation, landfills, sewage plumes.

4. Conclusions and Opportunities for Future Research

Using a reactive transport model, we simulated the release of geogenic As that occurs during Fe-reduction coupled with the biodegradation of petroleum hydrocarbons resulting from a crude-oil spill near Bemidji, Minnesota (USA). The reactive transport model was informed by decades of field observations for organic and inorganic constituents from the petroleum-contaminated aquifer. Our modeling results suggest that As concentrations in groundwater within the plume will exceed 10 µg/L for ~400 years. Anoxic conditions are maintained due to oxygen demand exerted by biodegradable organic carbon in the plume. However, after the organic carbon degrades and oxygenated conditions are re-established, As will re-associate with Fe(OH)₃. Our simulations show that As will contaminate more groundwater than benzene from the oil spill, suggesting that As should be closely monitored in petroleum-contaminated aquifers. Investigations into the toxicological effects of combined As and benzene exposure are warranted, as this study suggests the two can co-occur in petroleum-contaminated aquifers for centuries. Such a study would provide crucial knowledge of the human health risks at oil spill sites.

Supplementary Materials: The following are available online at <https://www.mdpi.com/article/10.3390/w13111485/s1>, Figure S1: Relative abundances of aqueous As(V) species and As(V) surface complexes, Table S1: Physical and chemical properties of bulk oil.

Author Contributions: Conceptualization, B.A.Z., G.-H.C.N. and M.E.S.; methodology, B.A.Z., G.-H.C.N. and M.E.S.; software, B.A.Z., G.-H.C.N. and A.J.D.; formal analysis, B.A.Z. and G.-H.C.N.; investigation, B.A.Z., I.M.C. and M.E.S.; resources, I.M.C. and M.E.S.; data curation, B.A.Z.; writing—original draft preparation, B.A.Z. and M.E.S.; writing—review and editing, B.A.Z., G.-H.C.N., I.M.C. and M.E.S.; visualization, B.A.Z.; funding acquisition, B.A.Z., I.M.C. and M.E.S. All authors have read and agreed to the published version of the manuscript.

Funding: This project was supported by the U.S. Geological Survey (USGS) Toxic Substances Hydrology Program and the National Research Program. Additional funding was provided by a collaborative venture of the USGS, Enbridge Energy Limited Partnership, the Minnesota Pollution Control Agency, and Beltrami County, MN.

Institutional Review Board Statement: Not applicable.

Informed Consent Statement: Not applicable.

Data Availability Statement: Data are contained within the article, supplementary material and Ng et al., 2015 [28].

Acknowledgments: We would like to thank Jeanne Jaeschke for her help collecting and analyzing samples. The scientists at the U.S. Geological Survey Minnesota Water Science Center, including Jared Trost, Andrew Berg, and Brent Mason were incredibly helpful planning and executing field sample collection. We also thank Jennifer McGuire, Erica Henderson, Hannah Link, and Zach Mader from the University of St. Thomas for help collecting and processing samples in the field. We thank Barbara Bekins for reviewing a draft of the manuscript and providing insightful suggestions and also thank five anonymous reviewers for their helpful comments. Any use of trade, firm, or product names is for descriptive purposes only and does not imply endorsement by the U.S. Government.

Conflicts of Interest: The authors declare no conflict of interest.

References

1. National Research Council. *Critical Aspects of EPA's IRIS Assessment of Inorganic Arsenic: Interm Report*; National Academy Press: Washington, DC, USA, 2014.
2. United States Environmental Protection Agency. *Drinking Water Standard for Arsenic*; EPA 815-F-00-016; United States Environmental Protection Agency: Washington, DC, USA, 2001.
3. Nordstrom, D.K. Worldwide occurrences of arsenic in ground water. *Science* **2002**, *296*, 2143LP–2145LP. [[CrossRef](#)] [[PubMed](#)]
4. Smedley, P.L.; Kinniburgh, D.G. A review of the source, behaviour and distribution of arsenic in natural waters. *Appl. Geochem.* **2002**, *17*, 517–568. [[CrossRef](#)]
5. Welch, A.H.; Westjohn, D.B.; Helsel, D.R.; Wanty, R.B. Arsenic in ground water of the united states: Occurrence and geochemistry. *Groundwater* **2000**, *38*, 589–604. [[CrossRef](#)]
6. Sørensen, H.U.; Postma, D.; Vi, M.L.; Pham, T.K.T.; Kazmierczak, J.; Dao, V.N.; Pi, K.; Koch, C.B.; Pham, H.V.; Jakobsen, R. Arsenic in holocene aquifers of the Red River Floodplain, Vietnam: Effects of sediment-water interactions, sediment burial age and groundwater residence time. *Geochim. Cosmochim. Acta* **2018**, *225*, 192–209. [[CrossRef](#)]
7. Harvey, C.F.; Swartz, C.H.; Badruzzaman, A.B.M.; Keon-Blute, N.; Yu, W.; Ali, M.A.; Jay, J.; Beckie, R.; Niedan, V.; Brabander, D.; et al. Arsenic mobility and groundwater extraction in Bangladesh. *Science* **2002**, *298*, 1602LP–1606LP. [[CrossRef](#)]
8. Neumann, R.B.; Pracht, L.E.; Polizzotto, M.L.; Badruzzaman, A.B.M.; Ali, M.A. Biodegradable organic carbon in sediments of an arsenic-contaminated aquifer in Bangladesh. *Environ. Sci. Technol. Lett.* **2014**, *1*, 221–225. [[CrossRef](#)]
9. Neumann, R.B.; Ashfaq, K.N.; Badruzzaman, A.B.M.; Ashraf Ali, M.; Shoemaker, J.K.; Harvey, C.F. Anthropogenic influences on groundwater arsenic concentrations in Bangladesh. *Nat. Geosci.* **2010**, *3*, 46–52. [[CrossRef](#)]
10. Polizzotto, M.L.; Kocar, B.D.; Benner, S.G.; Sampson, M.; Fendorf, S. Near-surface wetland sediments as a source of arsenic release to ground water in Asia. *Nature* **2008**, *454*, 505–508. [[CrossRef](#)]
11. Whaley-Martin, K.J.; Mailloux, B.J.; van Geen, A.; Bostick, B.C.; Ahmed, K.M.; Choudhury, I.; Slater, G.F. Human and livestock waste as a reduced carbon source contributing to the release of arsenic to shallow Bangladesh groundwater. *Sci. Total Environ.* **2017**, *595*, 63–71. [[CrossRef](#)]
12. Kocar, B.D.; Fendorf, S. Thermodynamic constraints on reductive reactions influencing the biogeochemistry of arsenic in soils and sediments. *Environ. Sci. Technol.* **2009**, *43*, 4871–4877. [[CrossRef](#)]
13. Postma, D.; Larsen, F.; Thai, N.T.; Trang, P.T.K.; Jakobsen, R.; Nhan, P.Q.; Long, T.V.; Viet, P.H.; Murray, A.S. Groundwater arsenic concentrations in Vietnam controlled by sediment age. *Nat. Geosci.* **2012**, *5*, 656–661. [[CrossRef](#)]
14. Stuckey, J.W.; Sparks, D.L.; Fendorf, S. *Delineating the Convergence of Biogeochemical Factors Responsible for Arsenic Release to Groundwater in South and Southeast Asia*; Sparks, D.L., Ed.; Academic Press: Cambridge, MA, USA, 2016; Volume 140, pp. 43–74. [[CrossRef](#)]
15. Stuckey, J.W.; Schaefer, M.V.; Benner, S.G.; Fendorf, S. Reactivity and speciation of mineral-associated arsenic in seasonal and permanent wetlands of the Mekong Delta. *Geochim. Cosmochim. Acta* **2015**, *171*, 143–155. [[CrossRef](#)]
16. Radloff, K.A.; Zheng, Y.; Michael, H.A.; Stute, M.; Bostick, B.C.; Mihajlov, I.; Bounds, M.; Huq, M.R.; Choudhury, I.; Rahman, M.W.; et al. Arsenic migration to deep groundwater in Bangladesh influenced by adsorption and water demand. *Nat. Geosci.* **2011**, *4*, 793–798. [[CrossRef](#)]
17. van Geen, A.; Zheng, Y.; Goodbred, S.; Horneman, A.; Aziz, Z.; Cheng, Z.; Stute, M.; Mailloux, B.; Weinman, B.; Hoque, M.A.; et al. Flushing history as a hydrogeological control on the regional distribution of arsenic in shallow groundwater of the Bengal Basin. *Environ. Sci. Technol.* **2008**, *42*, 2283–2288. [[CrossRef](#)]
18. Postma, D.; Mai, N.T.H.; Lan, V.M.; Trang, P.T.K.; Sørensen, H.U.; Nhan, P.Q.; Larsen, F.; Viet, P.H.; Jakobsen, R. Fate of Arsenic during red river water infiltration into aquifers beneath Hanoi, Vietnam. *Environ. Sci. Technol.* **2017**, *51*, 838–845. [[CrossRef](#)] [[PubMed](#)]
19. Stute, M.; Zheng, Y.; Schlosser, P.; Horneman, A.; Dhar, R.K.; Datta, S.; Hoque, M.A.; Seddique, A.A.; Shamsudduha, M.; Ahmed, K.M.; et al. Hydrological control of as concentrations in Bangladesh groundwater. *Water Resour. Res.* **2007**, *43*. [[CrossRef](#)]

20. Charlet, L.; Chakraborty, S.; Appelo, C.A.J.; Roman-Ross, G.; Nath, B.; Ansari, A.A.; Lanson, M.; Chatterjee, D.; Mallik, S.B. Chemodynamics of an arsenic hotspot in a West Bengal aquifer: A field and reactive transport modeling study. *Appl. Geochem.* **2007**, *22*, 1273–1292. [[CrossRef](#)]
21. Jung, H.B.; Bostick, B.C.; Zheng, Y. Field, experimental, and modeling study of arsenic partitioning across a redox transition in a Bangladesh aquifer. *Environ. Sci. Technol.* **2012**, *46*, 1388–1395. [[CrossRef](#)]
22. Postma, D.; Larsen, F.; Minh Hue, N.T.; Duc, M.T.; Viet, P.H.; Nhan, P.Q.; Jessen, S. Arsenic in groundwater of the red river floodplain, Vietnam: Controlling geochemical processes and reactive transport modeling. *Geochim. Cosmochim. Acta* **2007**, *71*, 5054–5071. [[CrossRef](#)]
23. Rotiroti, M.; Jakobsen, R.; Fumagalli, L.; Bonomi, T. Arsenic release and attenuation in a multilayer aquifer in the po plain (Northern Italy): Reactive transport modeling. *Appl. Geochem.* **2015**, *63*, 599–609. [[CrossRef](#)]
24. Wallis, I.; Prommer, H.; Berg, M.; Siade, A.J.; Sun, J.; Kipfer, R. The river–groundwater interface as a hotspot for arsenic release. *Nat. Geosci.* **2020**, *13*, 288–295. [[CrossRef](#)]
25. Johannesson, K.H.; Yang, N.; Trahan, A.S.; Telfeyan, K.; Jade Mohajerin, T.; Adebayo, S.B.; Akintomide, O.A.; Chevis, D.A.; Datta, S.; White, C.D. Biogeochemical and reactive transport modeling of arsenic in groundwaters from the Mississippi River Delta plain: An analog for the As-affected aquifers of South and Southeast Asia. *Geochim. Cosmochim. Acta* **2019**, *264*, 245–272. [[CrossRef](#)]
26. Jung, H.B.; Charette, M.A.; Zheng, Y. Field, Laboratory, and modeling study of reactive transport of groundwater arsenic in a coastal aquifer. *Environ. Sci. Technol.* **2009**, *43*, 5333–5338. [[CrossRef](#)]
27. Rawson, J.; Siade, A.; Sun, J.; Neidhardt, H.; Berg, M.; Prommer, H. Quantifying reactive transport processes governing arsenic mobility after injection of reactive organic carbon into a Bengal Delta aquifer. *Environ. Sci. Technol.* **2017**, *51*, 8471–8480. [[CrossRef](#)] [[PubMed](#)]
28. Ng, G.-H.C.; Bekins, B.A.; Cozzarelli, I.M.; Baedecker, M.J.; Bennett, P.C.; Amos, R.T.; Herkelrath, W.N. Reactive transport modeling of geochemical controls on secondary water quality impacts at a crude oil spill site near Bemidji, MN. *Water Resour. Res.* **2015**, *51*, 4156–4183. [[CrossRef](#)]
29. Cozzarelli, I.M.; Schreiber, M.E.; Erickson, M.L.; Ziegler, B.A. Arsenic cycling in hydrocarbon plumes: Secondary effects of natural attenuation. *Groundwater* **2016**, *54*, 35–45. [[CrossRef](#)]
30. Ziegler, B.A.; Schreiber, M.E.; Cozzarelli, I.M. The role of alluvial aquifer sediments in attenuating a dissolved arsenic plume. *J. Contam. Hydrol.* **2017**, *204*, 90–101. [[CrossRef](#)] [[PubMed](#)]
31. Ziegler, B.A.; Schreiber, M.E.; Cozzarelli, I.M.; Crystal Ng, G.-H. A mass balance approach to investigate arsenic cycling in a petroleum plume. *Environ. Pollut.* **2017**, *231*, 1351–1361. [[CrossRef](#)] [[PubMed](#)]
32. Bekins, B.A.; Cozzarelli, I.M.; Curtis, G.P. A simple method for calculating growth rates of petroleum hydrocarbon plumes. *Groundwater* **2005**, *43*, 817–826. [[CrossRef](#)] [[PubMed](#)]
33. Cozzarelli, I.M.; Bekins, B.A.; Eganhouse, R.P.; Warren, E.; Essaid, H.I. In situ measurements of volatile aromatic hydrocarbon biodegradation rates in groundwater. *J. Contam. Hydrol.* **2010**, *111*, 48–64. [[CrossRef](#)]
34. Cozzarelli, I.M.; Baedecker, M.J.; Eganhouse, R.P.; Goerlitz, D.F. The geochemical evolution of low-molecular-weight organic acids derived from the degradation of petroleum contaminants in groundwater. *Geochim. Cosmochim. Acta* **1994**, *58*, 863–877. [[CrossRef](#)]
35. Eganhouse, R.P.; Baedecker, M.J.; Cozzarelli, I.M.; Aiken, G.R.; Thorn, K.A.; Dorsey, T.F. Crude oil in a shallow sand and gravel aquifer—II. Organic geochemistry. *Appl. Geochem.* **1993**, *8*, 551–567. [[CrossRef](#)]
36. Essaid, H.I.; Bekins, B.A.; Herkelrath, W.N.; Delin, G.N. Crude oil at the Bemidji site: 25 years of monitoring, modeling, and understanding. *Groundwater* **2011**, *49*, 706–726. [[CrossRef](#)] [[PubMed](#)]
37. Lovley, D.R.; Baedecker, M.J.; Lonergan, D.J.; Cozzarelli, I.M.; Phillips, E.J.P.; Siegel, D.I. Oxidation of aromatic contaminants coupled to microbial iron reduction. *Nature* **1989**, *339*, 297–300. [[CrossRef](#)]
38. Tuccillo, M.E.; Cozzarelli, I.M.; Herman, J.S. Iron reduction in the sediments of a hydrocarbon-contaminated aquifer. *Appl. Geochem.* **1999**, *14*, 655–667. [[CrossRef](#)]
39. Baedecker, M.J. Authigenic Mineral Formation in Aquifer Rich in Organic Material. In *Water-Rock Interaction-7*; Karkaka, Y.K., Maest, A.S., Eds.; International Association of Geochemistry and Cosmochemistry: Rotterdam, The Netherlands, 1992; pp. 257–263.
40. Zachara, J.M.; Kukkadapu, R.K.; Gassman, P.L.; Dohnalkova, A.; Fredrickson, J.K.; Anderson, T. Biogeochemical transformation of Fe minerals in a petroleum-contaminated aquifer. *Geochim. Cosmochim. Acta* **2004**, *68*, 1791–1805. [[CrossRef](#)]
41. Essaid, H.I.; Cozzarelli, I.M.; Eganhouse, R.P.; Herkelrath, W.N.; Bekins, B.A.; Delin, G.N. Inverse modeling of BTEX dissolution and biodegradation at the Bemidji, MN crude-oil spill site. *J. Contam. Hydrol.* **2003**, *67*, 269–299. [[CrossRef](#)]
42. Dillard, L.A.; Essaid, H.I.; Herkelrath, W.N. Multiphase flow modeling of a crude-oil spill site with a bimodal permeability distribution. *Water Resour. Res.* **1997**, *33*, 1617–1632. [[CrossRef](#)]
43. Strobel, M.L.; Delin, G.N.; Munson, C.J. *Spatial Variation in Saturated Hydraulic Conductivity of Sediments at a Crude-Oil Spill Site near Bemidji, Minnesota*; Water-Resources Investigations Report 98-4503; U.S. Geological Survey: Mounds View, MN, USA, 1998.
44. Bennett, P.C.; Siegel, D.E.; Baedecker, M.J.; Hult, M.F. Crude oil in a shallow sand and gravel aquifer—I. Hydrogeology and inorganic geochemistry. *Appl. Geochem.* **1993**, *8*, 529–549. [[CrossRef](#)]
45. Pipeline and Hazardous Materials Safety Administration. *Hazardous Liquid Pipeline Accident Reports for 2010–Present*; Updated 30 April 2020; U.S. Department of Transportation: Washington, DC, USA, 2020.

46. Pfannkuch, H.O. *Interim Report and Recommendations on Monitoring Program for Site M.P. 926.5*; Unpublished Consultant Report; Lakehead Pipe Line Company, Inc.: Calgary, AB, Canada, 1979.
47. Baedecker, M.J.; Cozzarelli, I.M.; Eganhouse, R.P.; Siegel, D.I.; Bennett, P.C. Crude oil in a shallow sand and gravel aquifer—III. Biogeochemical reactions and mass balance modeling in anoxic groundwater. *Appl. Geochem.* **1993**, *8*, 569–586. [[CrossRef](#)]
48. Cozzarelli, I.M.; Bekins, B.A.; Baedecker, M.J.; Aiken, G.R.; Eganhouse, R.P.; Tuccillo, M.E. Progression of natural attenuation processes at a crude-oil spill site: I. Geochemical evolution of the plume. *J. Contam. Hydrol.* **2001**, *53*, 369–385. [[CrossRef](#)]
49. Amos, R.T.; Bekins, B.A.; Cozzarelli, I.M.; Voytek, M.A.; Kirshtein, J.D.; Jones, E.J.P.; Blowes, D.W. Evidence for iron-mediated anaerobic methane oxidation in a crude oil-contaminated aquifer. *Geobiology* **2012**, *10*, 506–517. [[CrossRef](#)]
50. McNab, W.W., Jr.; Narasimhan, T.N. Modeling reactive transport of organic compounds in groundwater using a partial redox disequilibrium approach. *Water Resour. Res.* **1994**, *30*, 2619–2635. [[CrossRef](#)]
51. Essaid, H.I.; Bekins, B.A.; Godsy, E.M.; Warren, E.; Baedecker, M.J.; Cozzarelli, I.M. Simulation of aerobic and anaerobic biodegradation processes at a crude oil spill site. *Water Resour. Res.* **1995**, *31*, 3309–3327. [[CrossRef](#)]
52. Curtis, G.P. Comparison of approaches for simulating reactive solute transport involving organic degradation reactions by multiple terminal electron acceptors. *Comput. Geosci.* **2003**, *29*, 319–329. [[CrossRef](#)]
53. Amos, R.T.; Mayer, U.K. Investigating the role of gas bubble formation and entrapment in contaminated aquifers: Reactive transport modelling. *J. Contam. Hydrol.* **2006**, *87*, 123–154. [[CrossRef](#)]
54. Prommer, H.; Barry, D.A.; Zheng, C. MODFLOW/MT3DMS-based reactive multicomponent transport modeling. *Groundwater* **2003**, *41*, 247–257. [[CrossRef](#)] [[PubMed](#)]
55. Harbaugh, A.W. MODFLOW-2005: The U.S. Geological Survey Modular Ground-Water Model—the Ground-Water Flow Process; U.S. Geological Survey: Reston, VA, USA, 2005. [[CrossRef](#)]
56. Zheng, C.; Wang, P.P. *MT3DMS: A Modular Three-Dimensional Multispecies Model for Simulation of Advection, Dispersion and Chemical Reactions of Contaminants in Groundwater Systems: Documentation and User's Guide*; Development Center Contract Report SERDP-99-1; U.S. Army Engineer Research: Vicksburg, MI, USA, 1999.
57. Parkhurst, D.L.; Appelo, C.A.J. *User's Guide to PHREEQC (Version 2)—A Computer Program for Speciation, Batch-Reaction, One-Dimensional Transport, and Inverse Geochemical Calculations*; Water-Resources Investigations Report 99-4259; U.S. Geological Survey: Denver, CO, USA, 1999.
58. Jakobsen, R.; Postma, D. Redox zoning, rates of sulfate reduction and interactions with Fe-reduction and methanogenesis in a shallow sandy aquifer, Rømø, Denmark. *Geochim. Cosmochim. Acta* **1999**, *63*, 137–151. [[CrossRef](#)]
59. Dzombak, D.A.; Morel, F.M. *Surface Complexation Modeling: Hydrous Ferric Oxide*; John Wiley & Sons: Hoboken, NJ, USA, 1990.
60. Smith, R.M.; Martell, A.E. *Critical Stability Constants, Inorganic Complexes*; Plenum Press: New York, NY, USA, 1976; Volume 4.
61. Dixit, S.; Hering, J.G. Comparison of arsenic(V) and arsenic(III) sorption onto iron oxide minerals: Implications for arsenic mobility. *Environ. Sci. Technol.* **2003**, *37*, 4182–4189. [[CrossRef](#)]
62. Appelo, C.A.J.; Van Der Weiden, M.J.J.; Tournassat, C.; Charlet, L. Surface complexation of ferrous iron and carbonate on ferrihydrite and the mobilization of arsenic. *Environ. Sci. Technol.* **2002**, *36*, 3096–3103. [[CrossRef](#)]
63. Ziegler, B.A.; Schreiber, M.E.; Cozzarelli, I.M.; Ng, G.-H.C. *Arsenic and Iron Data (2010–2015) for Petroleum Plume Mass Balance*; U.S. Geological Survey: Bemidji, MN, USA, 2017. [[CrossRef](#)]
64. Ng, G.-H.C.; Bekins, B.A.; Cozzarelli, I.M.; Baedecker, M.J.; Bennett, P.C.; Amos, R.T. A mass balance approach to investigating geochemical controls on secondary water quality impacts at a crude oil spill site near Bemidji, MN. *J. Contam. Hydrol.* **2014**, *164*, 1–15. [[CrossRef](#)]
65. Heron, G.; Crouzet, C.; Bourq, A.C.M.; Christensen, T.H. Speciation of Fe(II) and Fe(III) in contaminated aquifer sediments using chemical extraction techniques. *Environ. Sci. Technol.* **1994**, *28*, 1698–1705. [[CrossRef](#)] [[PubMed](#)]
66. Barcelona, M.J.; Varljen, M.D.; Puls, R.W.; Kaminski, D. Ground water purging and sampling methods: History vs. hysteria. *Groundw. Monit. Remediat.* **2005**, *25*, 52–62. [[CrossRef](#)]
67. Erickson, M.L.; Malenda, H.F.; Berquist, E.C.; Ayotte, J.D. Arsenic concentrations after drinking water well installation: Time-varying effects on arsenic mobilization. *Sci. Total Environ.* **2019**, *678*, 681–691. [[CrossRef](#)] [[PubMed](#)]
68. Erickson, M.L.; Barnes, R.J. Arsenic concentration variability in public water system wells in Minnesota, USA. *Appl. Geochem.* **2006**, *21*, 305–317. [[CrossRef](#)]
69. Schreiber, M.E.; Simo, J.A.; Freiberg, P.G. Stratigraphic and geochemical controls on naturally occurring arsenic in groundwater, Eastern Wisconsin, USA. *Hydrogeol. J.* **2000**, *8*, 161–176. [[CrossRef](#)]
70. Zheng, C.; Bennett, G.D. *Applied Contaminant Transport Modeling*; Wiley-Interscience: New York, NY, USA, 2002.
71. Anawar, H.M.; Akai, J.; Sakugawa, H. Mobilization of arsenic from subsurface sediments by effect of bicarbonate ions in groundwater. *Chemosphere* **2004**, *54*, 753–762. [[CrossRef](#)] [[PubMed](#)]
72. Bekins, B.A.; Cozzarelli, I.M.; Godsy, E.M.; Warren, E.; Essaid, H.I.; Tuccillo, M.E. Progression of natural attenuation processes at a crude oil spill site: II. Controls on spatial distribution of microbial populations. *J. Contam. Hydrol.* **2001**, *53*, 387–406. [[CrossRef](#)]
73. Eganhouse, R.P.; Dorsey, T.F.; Phinney, C.S.; Westcott, A.M. Processes affecting the fate of monoaromatic hydrocarbons in an aquifer contaminated by crude oil. *Environ. Sci. Technol.* **1996**, *30*, 3304–3312. [[CrossRef](#)]
74. Podgorski, J.; Berg, M. Global threat of arsenic in groundwater. *Science* **2020**, *368*, 845LP–850LP. [[CrossRef](#)] [[PubMed](#)]
75. Lee, J.-U.; Lee, S.-W.; Kim, K.-W.; Yoon, C.-H. The effects of different carbon sources on microbial mediation of arsenic in arsenic-contaminated sediment. *Environ. Geochem. Health* **2005**, *27*, 159–168. [[CrossRef](#)] [[PubMed](#)]

-
76. McLean, J.E.; Dupont, R.R.; Sorensen, D.L. Iron and arsenic release from aquifer solids in response to biostimulation. *J. Environ. Qual.* **2006**, *35*, 1193–1203. [[CrossRef](#)] [[PubMed](#)]
 77. Smith, S.; Dupont, R.R.; McLean, J.E. Arsenic release and attenuation processes in a groundwater aquifer during anaerobic remediation of TCE with biostimulation. *Groundw. Monit. Remediat.* **2019**, *39*, 61–70. [[CrossRef](#)]
 78. Tillotson, J.M.; Borden, R.C. Statistical analysis of secondary water quality impacts from enhanced reductive bioremediation. *Groundw. Monit. Remediat.* **2015**, *35*, 67–77. [[CrossRef](#)]