



This is a repository copy of *Automatic methods of hoof-on and -off detection in horses using wearable inertial sensors during walk and trot on asphalt, sand and grass.*

White Rose Research Online URL for this paper:
<https://eprints.whiterose.ac.uk/176590/>

Version: Published Version

Article:

Briggs, E.V. orcid.org/0000-0002-7665-2115 and Mazzà, C. orcid.org/0000-0002-5215-1746 (2021) Automatic methods of hoof-on and -off detection in horses using wearable inertial sensors during walk and trot on asphalt, sand and grass. PLoS ONE, 16 (7). e0254813.

<https://doi.org/10.1371/journal.pone.0254813>

Reuse

This article is distributed under the terms of the Creative Commons Attribution (CC BY) licence. This licence allows you to distribute, remix, tweak, and build upon the work, even commercially, as long as you credit the authors for the original work. More information and the full terms of the licence here:
<https://creativecommons.org/licenses/>

Takedown

If you consider content in White Rose Research Online to be in breach of UK law, please notify us by emailing eprints@whiterose.ac.uk including the URL of the record and the reason for the withdrawal request.



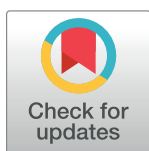
eprints@whiterose.ac.uk
<https://eprints.whiterose.ac.uk/>

RESEARCH ARTICLE

Automatic methods of hoof-on and -off detection in horses using wearable inertial sensors during walk and trot on asphalt, sand and grass

Eloise V. Briggs^{1,2*}, Claudia Mazzà^{1,2}

1 Department of Mechanical Engineering, University of Sheffield, Sheffield, United Kingdom, **2** INSIGNEO Institute for in silico Medicine, University of Sheffield, Sheffield, United Kingdom

* evbriggs1@sheffield.ac.uk**OPEN ACCESS**

Citation: Briggs EV, Mazzà C (2021) Automatic methods of hoof-on and -off detection in horses using wearable inertial sensors during walk and trot on asphalt, sand and grass. PLoS ONE 16(7): e0254813. <https://doi.org/10.1371/journal.pone.0254813>

Editor: Chris Rogers, Massey University, NEW ZEALAND

Received: March 8, 2021

Accepted: July 4, 2021

Published: July 26, 2021

Peer Review History: PLOS recognizes the benefits of transparency in the peer review process; therefore, we enable the publication of all of the content of peer review and author responses alongside final, published articles. The editorial history of this article is available here: <https://doi.org/10.1371/journal.pone.0254813>

Copyright: © 2021 Briggs, Mazzà. This is an open access article distributed under the terms of the [Creative Commons Attribution License](https://creativecommons.org/licenses/by/4.0/), which permits unrestricted use, distribution, and reproduction in any medium, provided the original author and source are credited.

Data Availability Statement: The data underlying this study are available on Figshare ([10.15131/shef.data.14945844](https://doi.org/10.15131/shef.data.14945844)).

Abstract

Detection of hoof-on and -off events are essential to gait classification in horses. Wearable sensors have been endorsed as a convenient alternative to the traditional force plate-based method. The aim of this study was to propose and validate inertial sensor-based methods of gait event detection, reviewing different sensor locations and their performance on different gaits and exercise surfaces. Eleven horses of various breeds and ages were recruited to wear inertial sensors attached to the hooves, pasterns and cannons. Gait events detected by pastern and cannon methods were compared to the reference, hoof-detected events. Walk and trot strides were recorded on asphalt, grass and sand. Pastern-based methods were found to be the most accurate and precise for detecting gait events, incurring mean errors of between 1 and 6ms, depending on the limb and gait, on asphalt. These methods incurred consistent errors when used to measure stance durations on all surfaces, with mean errors of 0.1 to 1.16% of a stride cycle. In conclusion, the methods developed and validated here will enable future studies to reliably detect equine gait events using inertial sensors, under a wide variety of field conditions.

1 Introduction

In both equine sport and medicine, there is increasing demand for quantitative analysis of gait under field conditions [1]. Many techniques are predicated on the reliable detection of gait cycle events: *hoof-on* and *-off* [2]. These *gait events* are the instants in a gait cycle when the hoof first comes into contact with the ground (*hoof-on*) and that when it is first lifted fully from the ground (*hoof-off*) [3].

Methods to accurately detect gait events are valuable in various applications including performance analysis and lameness quantification. For instance, an increase in positive diagonal advanced placement (in which the hoof-on of the hindlimb precedes that of the contralateral forelimb) has been found to be an indicator of superior gait quality in advanced dressage horses [4] and approved Warmblood stallions [5]. Furthermore, the timing of gait events can be used to calculate the suspension of flying gaits, in which all four hooves are off the ground simultaneously.

Funding: The research of EVB is funded by Worldbase Ltd. and this study was also supported by the UK EPSRC (EP/K03877X/1, EP/S032940/1, <https://epsrc.ukri.org>). The funders had no role in study design, data collection and analysis, decision to publish, or preparation of the manuscript.

Competing interests: The research of EVB is funded by Worldbase Ltd. and this study was also supported by the UK EPSRC (EP/K03877X/1, EP/S032940/1, <https://epsrc.ukri.org>). The funders had no role in study design, data collection and analysis, decision to publish, or preparation of the manuscript. The commercial funder Worldbase Ltd. is a manufacturing company, specialising in agricultural machinery and currently has no products or services, existing or in design, related to the content of this research. This does not alter our adherence to PLOS ONE policies on sharing data and materials.

Studies into lameness detection have consistently found there to be a link between a statistically significant reduction in suspension phase and the presence of lameness [6–8].

The gold standard of gait event detection remains the force plate [9], which can directly measure ground reactions to differentiate between the load-bearing stance phase of a limb and swing phase. However, force plates not only come with extremely high costs but limit the number of strides which can be analysed, requiring a single foot to be placed fully on the plate for reliable analysis. Instrumented treadmills [10] have been used to overcome the latter point but these are often unsuitable for simulating real-world scenarios. Although a very limited number of studies have now used force plates in field conditions [11,12], the obvious complexities of integrating them into surfaces limit wider adoption of such methods. These factors make force plates unsuitable for collecting data under field conditions.

As such, efforts have been made to develop methods which use portable devices. Particularly, wearable inertial measurement units (IMUs) have been heralded as a potential solution to the problem of gait event detection in the field, being relatively inexpensive and highly convenient, (compared to the alternative force plate or optical motion capture systems). They enable data collection over any range of distance and conditions, are comparatively easy to attach to subjects, reducing set-up times, and are less cumbersome than some alternatives, minimising effect on the horse's movement.

Tijssen et al. [13] reported that IMUs attached to the lateral hoof wall were capable of successfully identifying gait events, using linear accelerations and angular velocities. Distinctive peaks in the resultants of acceleration and angular velocity were found to coincide with instances of hoof-on and -off recorded simultaneously by a force plate. Whilst this method might offer the most accurate and precise detection of gait events, securing sensors to the hooves is not always practicable- attachment being time consuming and there being a high risk of damage to sensors during data collection. Conversely, most horses very quickly become acclimatised to boots and wraps worn on the cannons or pasterns; hence, this paper sought to develop methods of gait event detection which used sensors mounted in these locations. Several previous studies have used inertial devices attached at the level of the pasterns to identify strides [14–16], and there is a commercial system which uses these methods (Lameness Locator™, Equinosis, Columbia). However, to the authors' best knowledge, there are no published methods for specific gait event detection which are publicly available.

Current state of the art methods use IMUs attached at the level of the cannon bone [9] or upper body locations [17] but validation of these have been limited in terms of subject cohorts and surface conditions. Different breeds of horse have inherently different conformation [18] which can have a significant effect on gait kinematics [19]. Age can also affect kinematics, with older horses showing signs of stiffened gait, for example due to osteoarthritis [20]. Whether the horse is shod or not can also affect gait [21]. Furthermore, extensive research has found that surface type has a significant effect on the horse's kinematics [22]. Despite these reported variations, previous studies have commonly included only one breed of horse and considered only one hard, concrete-like flooring.

The aim of this research was to propose and validate IMU based methods of gait event detection, including different sensor locations and different exercise surfaces. This will facilitate future studies under a variety of field conditions.

2 Materials and methods

2.1 Subjects

Eleven horses (eight geldings and three mares; of mean and standard deviation (SD) heights and ages of 154(21)cm and 12(8)years, respectively) of various breeds and levels of training

Table 1. Details of subject population.

Horse	Breed/type	Height (cm)	Age (years)	Shod (y/n)	Usual use
1	Selle français	158	11	y	Low level eventing
2	ISH	166	13	y	5 th eventing
3	ISH	147	20	y	Low level eventing
4	Friesian	158	4	y	Hacking
5	Westfalian	168	7	y	Low level eventing
6	ISH	168	14	y	2 nd eventing
7	Shetland	91	30	n	Retired
8	ISH	168	6	y	Low level eventing
9	Cob	150	12	n	Hacking
10	Welsh C	149	16	n	Low level dressage
11	ISH	166	5	y	Low level eventing
Mean(SD)	-	154(21)	12(8)	-	-

Details include whether each horse was shod or not (reported y or n, respectively) and the usual use of the horse; ISH indicates Irish Sports Horse.

<https://doi.org/10.1371/journal.pone.0254813.t001>

and fitness, from retired ponies to top level event horses, were included in the study (Table 1). Eight horses were shod and three were not.

2.2 Data acquisition

Six IMUs (Shimmer3 IMU, Shimmer Sensing, Dublin) were used to record data at 200Hz. Sensors were attached laterally to the hooves and the regions of the pasterns (proximal phalanges) and cannon bones (third meta-carpal and -tarsal bones) (Fig 1) of the left fore- and hindlimbs. Gyroscopes and magnetometers recorded data ranges of $\pm 2000\text{deg/s}$ and $\pm 49\text{Ga}$, respectively, and the triaxial accelerometers of $\pm 16\text{g}$ at the cannons and $\pm 200\text{g}$ at the pasterns and hooves. Cannon sensors were attached using commercially available pockets (Estride™, Bognor Regis), pastern IMUs using Velcro wraps and tape, and hoof IMUs using tape and elasticated bandages.

The horse was led by an experienced handler in a straight line of 25m at walk and trot, three passes per gait, on a hard control surface (asphalt). Trials were repeated on a grass field (grass) and sand and rubber chip surface (sand). Efforts were made to ensure data was

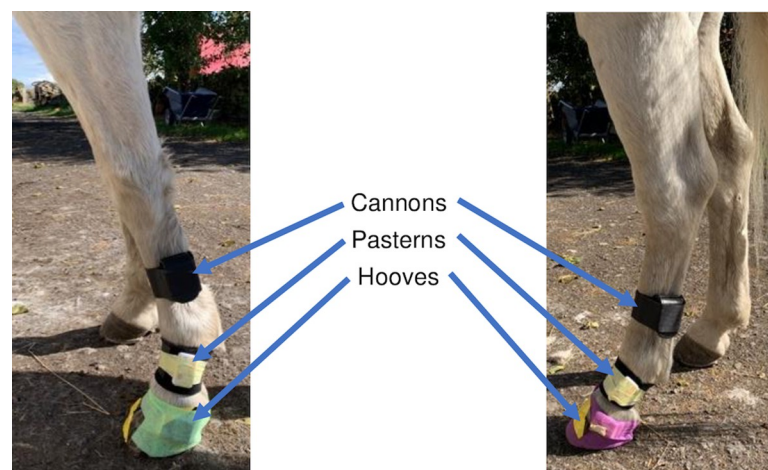


Fig 1. IMU placement. Sensors were attached to the cannons, pasterns and hooves of the left fore- and hindlimbs using custom-made pockets, Velcro wraps and elasticated bandages, respectively, and secured with tape.

<https://doi.org/10.1371/journal.pone.0254813.g001>

recorded under similar conditions for all horses. All the surfaces were level and datasets were collected during periods of dry weather when the grass field would be firm and the sand soft. Horses were verbally encouraged to maintain the correct gait (walk or trot) but were allowed to move at self-selected speeds. The methods were reviewed and approved by The University of Sheffield, Ethics Department (Reference Number 033398), and horse owners gave signed consent for their animal's involvement.

2.3 Gait events detection

The gait events (Fig 2) were defined as the instants in the stride cycles when the hoof first comes into contact with the ground at the onset of the stance phase (hoof-on) and when it is lifted from the ground, following break-over (hoof-off) [3]. A stride cycle refers to one full cycle of gait, from one hoof-on to the subsequent hoof-on.

In the data processing stages, the timings of gait events were estimated using various processing methods and data from different sensor locations. Algorithms were developed in MATLAB (version 2020R, The MathWorks Inc., Natick, Massachusetts, USA).

2.3.1 Reference method. Data from hoof mounted IMUs were processed as per Tijssen et al. [13] and gait event timings determined using this method (M_{ref}) were used as the reference values against which to compare those obtained using other methods. M_{ref} was previously robustly validated against a gold standard, (i.e. a force plate) for fore- and hindlimb gait events at walk and trot. Accuracies in the range of 2.4ms to 12.2ms for hoof-on and 3.2ms for hoof-off were reported [13].

Briefly, M_{ref} assumes that a prominent peak in the resultant of angular velocity ($AngVel_R$) measured at the hoof signifies a hoof-on (Fig 3C, down triangles). A prominent peak in the resultant acceleration (Acc_R) arises at instances of hoof-off (Fig 3F, up triangles).

2.3.2 Alternative methods. The first novel method estimated hoof-on and -off using Acc_R of either the pastern ($M1_p$) or cannon ($M1_c$). At the level of the hoof, peaks in Acc_R are created by the hoof-surface impact (hoof-on) and subsequent hoof lift-off (hoof-off) [13]. Here, it is hypothesised that these peaks in acceleration, which correspond to the gait events, would be detectable at the more proximal locations of the pasterns and cannons.

Both $M1_p$ and $M1_c$ were applied for fore- and hindlimbs at walk and trot. To assist in the subsequent peak detection, Acc_R was first segmented into rough periods of midstance to midstance (Fig 3A and 3D, blue windows). To achieve this for walk, a 1D median filter [23] with

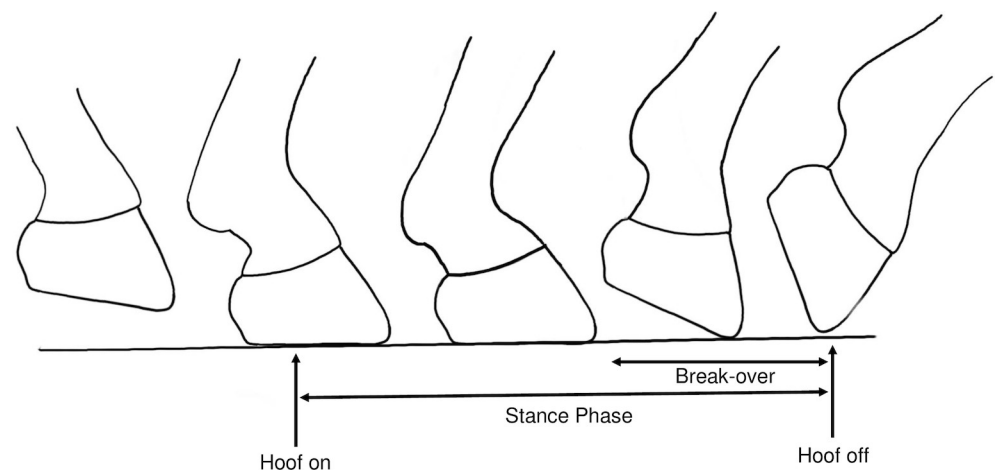


Fig 2. Illustration of the gait events. Position of the hoof at the instants of hoof-on and -off and how these gait events relate to the stance phase and break-over of the gait cycle.

<https://doi.org/10.1371/journal.pone.0254813.g002>

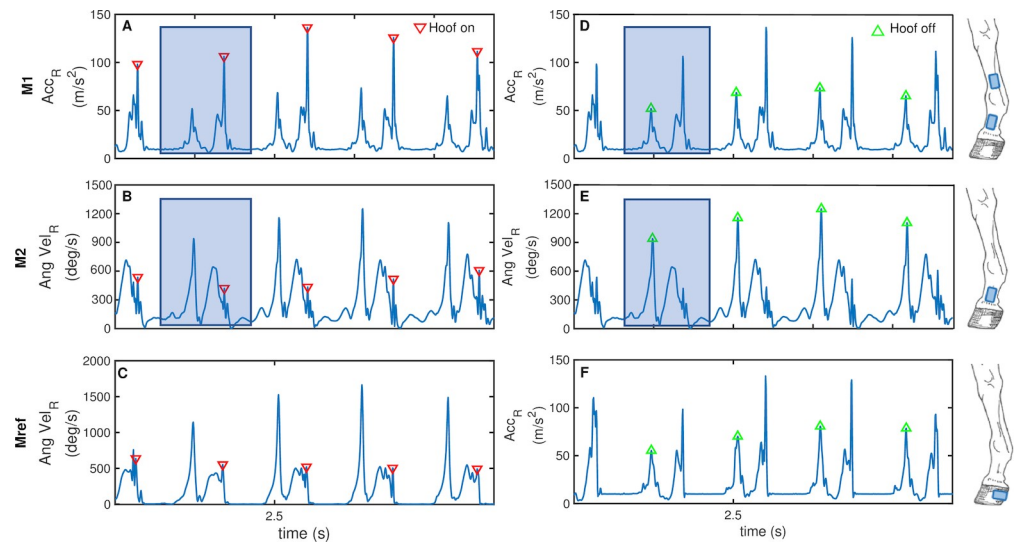


Fig 3. Illustration of the novel methods. Novel methods M1 (A and D) and M2 (B and E), and reference method M_{ref} (C and F) are illustrated; blue windows are examples of the frames in which relevant peaks were sought; down triangles (A-C) indicate hoof-on and up triangles (D-F) hoof-off; the sensor locations (hooves, pasterns and/or canons) for which each method is applicable are shown in illustrations on the right.

<https://doi.org/10.1371/journal.pone.0254813.g003>

window length of half the sampling frequency followed by a 2nd order Butterworth filter with cut off frequency of 5Hz was used to identify rough locations of the swing and stance periods. For trot, the same median filter followed by a 2nd order Butterworth filter with 20Hz cut off frequency was applied to the hindlimb cannon data, whereas a Butterworth filter with 5Hz cut off frequency, alone, was used for all other trot cases. The raw Acc_R was then filtered with a 2nd order Butterworth filter, cut off frequency 40Hz and one prominent peak near the beginning (Fig 3D, up triangles) and one near the end of each window (Fig 3A, down triangles) were labelled as hoof-off and hoof-on, respectively.

The second novel method estimated hoof-on and -off using $AngVel_R$ recorded at the pastern ($M2_p$) mounted sensors. Tijssen et al. [13] reported that spikes in $AngVel_R$ recorded at the hoof coincide with hoof-on and -off. Here, the hoof wall can be considered a rigid structure meaning there would be no angular movement of the hoof relative to the solid ground during stance phases. Hence, peaks in $AngVel_R$ before and after the stance duration, where the signal is quite flat, coincide with hoof-on and -off. On this premise, it was hypothesised that a peak corresponding to the gait events would also be detectable in $AngVel_R$ at the level of the pasterns.

$M2_p$ was applied for the fore- and hindlimbs at walk and trot. After applying the same windowing method described for M1 to the $AngVel_R$ signal, but with median filter window length of quarter the sampling frequency (Fig 3B and 3E, blue windows), the raw $AngVel_R$ was filtered using a second order Butterworth filter, cut off frequency 40Hz. A prominent peak near the beginning (hoof-off, Fig 3E, up triangles) and one near the end (hoof-on, Fig 3B, down triangles) of each window were detected.

Two additional methods, taken from the literature, were also investigated. Method $M3_c$ estimates hoof-on and -off using the angular velocity measured at the cannon [24]. The raw component of angular velocity about the sensor axis aligned with the mediolateral direction of the horse ($AngVel_{ML}$) recorded from a cannon mounted sensor is used. In this method, previously validated against a motion capture system for forelimb gait events at trot (Fig 4B), the deepest trough following the large peak of the signal is used to identify the hoof-on (down triangles) and the first peak to occur after the relatively flat (stance) portion to identify the

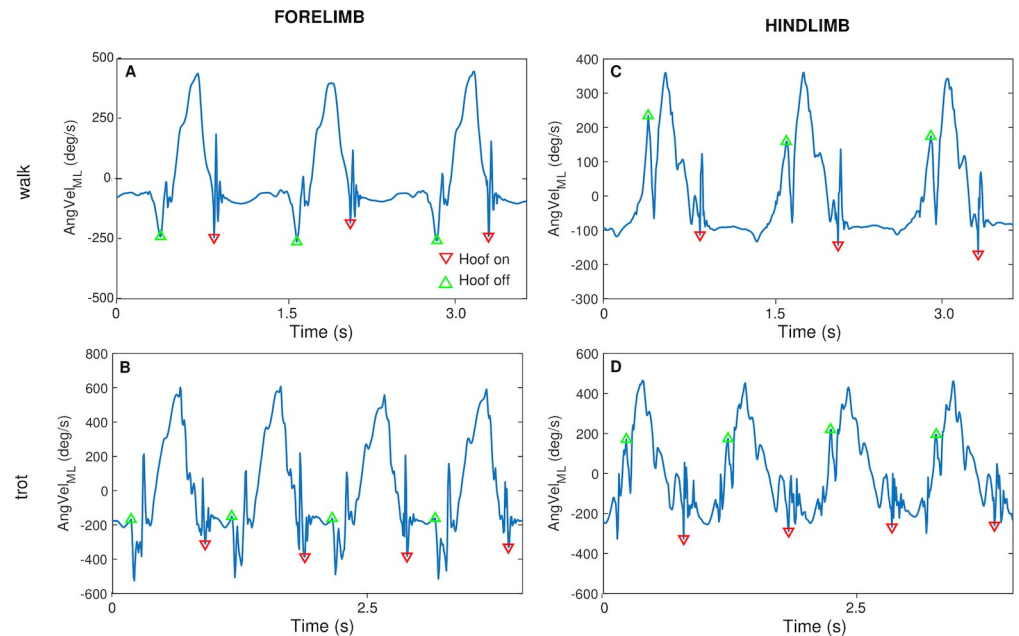


Fig 4. Illustration of M3_c. The implementation of M3_c for each limb and gait is illustrated; hoof-on events are indicated by down triangles and hoof-off by up triangles.

<https://doi.org/10.1371/journal.pone.0254813.g004>

hoof-off (up triangles). In this paper, the method was also applied to the data from the hindlimbs and walk, with adjustments made owing to the different AngVel_{ML} signal profiles produced by the different limb and gaits. For each limb and gait, the biggest peak in the signal was observed during the swing. For the hindlimbs at trot (Fig 4D), the deepest trough following this large peak was again detected as the moment of hoof-on and the last peak before it was used as the hoof-off. For the forelimb at walk (Fig 4A), the deepest troughs before and after the large peak, respectively, were detected as instances of hoof-off and on. For the hindlimbs at walk (Fig 4C), the deepest trough after the large peak was taken as the time of hoof-on and the last peak before it as the time of hoof-off.

Method M4_c, taken from [9], was applied to estimate hoof-on and -off from orientation and acceleration cannon data at walk and trot for fore- and hindlimbs, for which it was previously validated against force plate methods. First, the sensor angles were calculated using the IMUs' proprietary software (ConsensysPRO, Shimmer Sensing, Dublin). The timings of mid-swing and -stance points were estimated from these angles and these were then used to assist in detection of peaks corresponding to hoof-on and -off events in the Acc_R.

2.4 Data analysis

2.4.1 Quantification of errors in event detection. Descriptive statistics and agreement were calculated in Matlab. The initial analysis was conducted only on events recorded on the control surface- asphalt, considered the reference surface. Errors (E_{on} and E_{off}) were calculated (Eqs 2.1 and 2.2) by comparing hoof-on and -off events detected by the reference method (Hon_{ref} and $Hoff_{ref}$) to those detected by the alternative method (Hon_{alt} and $Hoff_{alt}$).

$$E_{on} = Hon_{ref} - Hon_{alt} \quad (2.1)$$

$$E_{off} = Hoff_{ref} - Hoff_{alt} \quad (2.2)$$

For individual gait events, the errors were expressed in ms. The performance of each method was assessed in terms of both accuracy and precision. Accuracy was defined as the means of the errors, E_{on} and E_{off} , incurred by the method and precision as the standard deviation of these errors. Methods were considered superior if the values of accuracy and precision were low, indicating a low mean error and small distribution of the error.

Gait events detected by each method were used to calculate stride durations. The agreement of each with the reference method was quantified by the limits of agreement (LoA), with upper and lower limits of agreement (ULoA and LLoA) calculated as per Bland and Altman [25] (Eqs 2.3 and 2.4), and the intraclass correlation coefficient for interrater reliability, ICC{3,1} [26]. Incurrences of false positive (FP), false negative (FN) and true positive (TP) events were detected and used to calculate sensitivity (Eq 2.5) and positive predictive value (PPV) (Eq 2.6) [27].

$$ULoA = E_{mean} + 1.96 \cdot SD \quad (2.3)$$

$$LLoA = E_{mean} - 1.96 \cdot SD \quad (2.4)$$

$$sensitivity = \frac{TP}{TP + FN} \cdot 100 \quad (2.5)$$

$$PPV = \frac{TP}{TP + FP} \cdot 100 \quad (2.6)$$

Statistical analysis was carried out in IBM SPSS Statistics V27.0 (Armonk, NY), with p-values <0.01 indicating significance. Differences between mean errors (E_{mean}) for $M1_p$, $M2_p$ and $M1_c$ were tested for significance. Normality of the error data was evaluated using Shapiro-Wilks test and by checking the Q-Q plots. Where normality was upheld, a one-way repeated measures ANOVA, controlled for the covariate *individual horse*, was conducted and Bonferroni post hoc test used to identify the source of significance, if any were found. For datasets which violated the assumption of homogeneity of variance, the Games-Howell post hoc test was used. Data which violated the assumption of normality was compared for significance using a Friedman test and Wilcoxon Signed Rank post hoc test if significant differences were identified.

2.4.2 Comparison between different surfaces. After the most accurate and precise methods were identified for each gait event, they were used to calculate stance durations (T) for the fore- and hindlimbs at walk and trot on all surfaces (Eq 2.7, where n is the number of the current stride):

$$T = Hoff_n - Hon_n \quad (2.7)$$

Each stance calculated from the novel method (T_{alt}) was compared to that obtained by the reference method (T_{ref}) by Eq 2.8 to obtain a value of error (E_{stance}).

$$E_{stance} = T_{ref} - T_{alt} \quad (2.8)$$

Bland-Altman methods were used to investigate the effect of different surfaces on the error incurred in stance calculation. Errors were expressed as percentages of the total stride duration and analysed as Bland-Altman figures, with E_{stance} plotted against T_{mean} (Eq 2.9).

$$T_{mean} = \frac{T_{ref} + T_{alt}}{2} \quad (2.9)$$

The difference in mean E_{stance} incurred, for each limb and gait, on each of the three surfaces were compared using a repeated measures one-way ANOVA or Friedman test, depending on the result of a Shapiro-Wilks test for normality and consideration of the Q-Q plots. Again, Bonferroni and Wilcoxon signed rank post hoc tests were used in each case. The effect of the individual horse covariate was controlled.

3 Results

A total of 1465 walk and 1255 trot strides were analysed. These were 500, 535 and 430 walk strides and 438, 399 and 418 trot strides on asphalt, grass and sand, respectively.

3.1 Event detection

The accuracies and precisions (mean and SD, as per previous definition) of the methods to detect gait events (Fig 5) and agreement (LoA and ICC) with the reference method are given in ms (Table 2).

For the cannon data, $M1_c$ performed better than $M3_c$ and $M4_c$, in all cases (Fig 5E–5H and 5M–5P). The values of ICC (Table 2) showed excellent agreement for all uses of $M1_p$, $M2_p$, $M1_c$ and $M3_c$ with M_{ref} to calculate stride durations (ICC > 0.90). Agreement for $M4_c$ was not consistently excellent, with the poorest value (ICC < 0.55) occurring for hindlimb hoof-on events at trot. The poor agreements seen for $M4_c$, along with the high mean errors and SD, led to exclusion of the method from further analysis.

For the pastern data, $M1_p$ and $M2_p$ both performed well for detecting all gait events (Fig 5A–5D and 5I–5L). $M1_p$ generally outperformed $M2_p$, except in the case of the forelimb events at trot, where $M2_p$ incurred a significantly smaller mean error ($p = 0.005$, hoof-on, Fig 5C; and $p < 0.001$, hoof-off, Fig 5D). For hindlimb hoof-on events (Fig 5K), the two methods were equally successful with $M1_p$ detecting events slightly late by a mean(SD) delay of 2(10)ms, and $M2_p$ slightly early, -1(10)ms. $M1_p$ was generally more successful than $M1_c$ except in the case of hoof-off events at walk ($p = 0.130$, forelimb, Fig 5B and 5F; and $p < 0.001$, hindlimb, Fig 5J and 5N). For the novel methods, no significant between-horses effects were found ($p > 0.9$).

Overall, the pasterns appear to be a superior location for sensor attachment than the canons. In terms of reliability, pastern methods consistently achieved sensitivity and PPV values of 99 or 100%. $M1_p$ was identified as the better method for detecting all gait events except forelimb events at trot, for which $M2_p$ demonstrated better accuracy. These were the methods chosen to detect the gait events for calculation of stance durations on the control surface and the two additional surfaces for the next level of analysis.

3.2 Comparison between surfaces

The errors incurred in stance durations for asphalt, sand and grass are summarised in Table 3 as percentages of total stride duration.

Reliability of the pastern methods remained high when applied to the additional surfaces, maintaining sensitivity and PPV values of 97% and above. $M1_p$ performed equally well when applied to the additional surfaces as well as asphalt and small variations in mean were not statistically significant. At trot $M2_p$ performed slightly better on grass and sand compared to the control surface and with smaller SD in both cases. Forelimb stance durations at trot were the least precise except for the hindlimbs at walk on grass.

Results of the Bland-Altman analysis are shown in Fig 6. The mean error, LLoA and ULoA were calculated after pooling together stance durations on all three surfaces. Although the LoA, calculated in this way, were wider than for each of the three surfaces considered individually, the mean error remained close to 0% and LoA only exceeded 10% for the forelimbs at trot

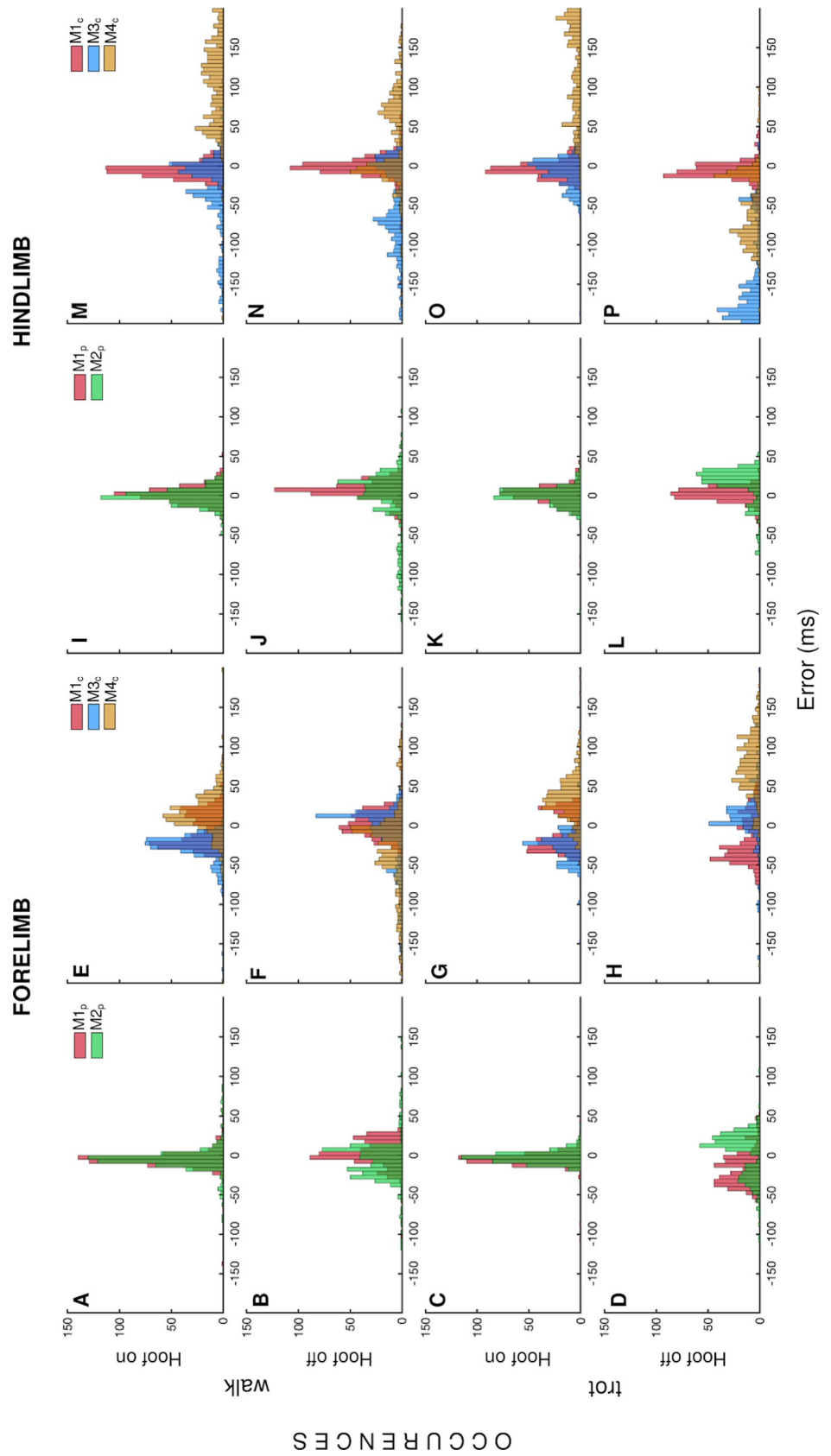


Fig 5. Distribution of errors incurred by methods to detect gait events. Histograms of the errors (E_{on} and E_{off}) in ms incurred by each method in detecting each of the eight types of gait events.

<https://doi.org/10.1371/journal.pone.0254813.g005>

(Fig 6B). The higher LoA in the latter case are reflective of the higher values of SD (Table 3). As with event detection on asphalt, no significant between-horses effects were seen ($p > 0.8$), suggesting methods had the same performance for all individuals.

4 Discussion

The aim of this research was to propose and validate different methods of gait event detection using IMUs, exploring both different sensor attachment locations and signal processing techniques. Overall, the best results were obtained from the pastern sensor using an algorithm based on the analysis of the resultant acceleration ($M1_p$), with the only exception being the forelimbs at trot, where angular velocity ($M2_p$) was shown to be preferable. These methods proved superior to those cannon-based ones previously introduced in the literature ($M3_c$ and $M4_c$). Next, the study proved that the validity of these two methods held on different surface types.

4.1 Event detection

Cannon-based methods, as previously proposed in the literature, proved to be accurate but not precise at walk and less accurate at trot, despite having previously been validated under this condition. $M3_c$ errors in detecting forelimb hoof-on and -off events, were -30ms and -15ms, respectively, at walk and -26ms and 62ms at trot. Similar errors were found for the hindlimb hoof-on events at walk (-31ms) and smaller errors for the hindlimb hoof-on at trot (-4ms). However, larger errors were observed for hoof-off events for the hindlimb at both walk (-31ms) and trot (-144ms). These high inaccuracies are likely due to using $AngVel_{ML}$ signal alone, which may be heavily dependent on the exact orientation of the sensor. Hence, the method may not be as robust, compared to other methods, under field conditions where some degree of sensor movement relative to the horse is inevitable. Indeed, $M1_c$, which uses only resultant acceleration data and is as such more robust to changes in sensor orientation, was more accurate and precise than either, $M3_c$ or $M4_c$. Furthermore, it also outperformed them in terms of sensitivity and PPV, consistently achieving values of 96% and higher compared to 93% for $M3_c$ and 81% for $M4_c$.

The errors incurred by $M3_c$ and $M4_c$ in this study were substantially larger than those reported in the literature. In the source paper, $M3_c$ was reported to incur a bias of 0.6% and 0.1% of a stride cycle for forelimb hoof-on and -off events at trot [24]. In the present application, for hoof-on and -off, the method incurred errors of -26ms and 62ms, respectively, equivalent to -3% and 7% of a stride cycle. These errors are some 5 and 70 times greater than in the original source. $M4_c$ was reported to incur mean errors ranging from -5.4ms to 14.2ms [9], far lower than those observed here (-72ms to 161ms). Several reasons for these substantial differences could be suggested. Firstly, in the present study, a highly varied cohort of horses was recruited and both fore- and hindlimbs tested. In comparison, $M3_c$ had only previously been validated for the forelimbs of trotters at trot and $M4_c$ only for Warmblood horses. The different gait styles adopted by different horses may be partly responsible for the difference in accuracies [19]. Last but not least, different gold standard methods used in the various studies may have also contributed to the difference in errors. Further studies, based on the same gold standard, would be needed to verify this hypothesis. Overall, according to the above considerations, the novel method $M1$ is recommended when using data collected at the cannon.

Table 2. Descriptive statistics of errors incurred by each method to detect gait events.

(ms)		Method	Mean	SD	LLoA	ULoA	ICC	Sensitivity (%)	PPV (%)		
FORELIMB											
WALK	Hoof-on	Pastern	M1	-5	11	-26	16	0.9981	100	99	
			M2	-4	14	-33	24	0.9953	99	99	
		Cannon	M1	-5	21	-47	37	0.9905	100	97	
			M3	-30	40	-109	49	0.9679	100	93	
			M4	14	72	-127	155	0.9254	90	100	
			M1	3	16	-28	34	0.9957	100	99	
	Hoof-off	Pastern	M2	-7	27	-61	46	0.9881	99	99	
			M1	1	19	-36	38	0.9939	100	97	
		Cannon	M3	-15	65	-142	112	0.9287	100	93	
			M4	-35	117	-265	194	0.8456	90	100	
			M1	-4 [*] , [^]	10	-24	15	0.9912	99	99	
			M2	-2[*],[†]	9	-19	15	0.9938	99	99	
TROT	Hoof-on	Cannon	M1	-9 [^] , [†]	23	-55	37	0.9515	99	100	
			M3	-26	21	-67	16	0.9567	100	94	
		M4	M1	43	67	-89	175	0.8336	81	100	
			M2	4[*],[†]	34	-63	71	0.9373	99	99	
	Hoof-off	Pastern	M1	-18 [*]	23	-62	27	0.9581	99	99	
			M2	4[*],[†]	34	-63	71	0.9373	99	99	
		Cannon	M1	-15 [†]	33	-80	50	0.9341	99	100	
			M3	62	114	-231	218	0.9559	100	94	
M4	77	102	-123	277	0.7366	81	100				
HINDLIMB											
WALK	Hoof-on	Pastern	M1	2^{*,^}	10	-19	22	0.9974	100	100	
			M2	-1^{*,[†]}	10	-22	19	0.9979	99	100	
		Cannon	M1	-5 [^] , [†]	11	-26	17	0.9977	100	99	
			M3	-31	55	-139	77	0.9456	100	97	
			M4	161	412	-652	974	0.7013	90	100	
			M1	6[^]	14	-22	34	0.9934	100	100	
		Hoof-off	Pastern	M2	-3 [†]	38	-77	72	0.9603	99	100
				M1	-1[^],[†]	15	-29	28	0.9940	100	99
	Cannon		M3	-57	69	-292	77	0.9284	100	97	
			M4	-15	180	-368	338	0.6999	90	100	
	TROT	Hoof-on	Pastern	M1	1^{*,^}	12	-23	26	0.9947	99	100
				M2	-1 ^{*,[†]}	19	-37	36	0.9880	99	100
Cannon			M1	-3 [^] , [†]	16	-34	29	0.9858	96	100	
			M3	-4	27	-56	48	0.9630	100	97	
			M4	98	147	-190	387	0.5439	90	100	
			M1	2^{*,^}	9	-16	20	0.9967	99	100	
Hoof-off			Pastern	M2	15 ^{*,[†]}	21	-26	57	0.9773	99	100
				M1	-7[^],[†]	14	-35	22	0.9881	96	100
		Cannon	M3	-144	62	-264	-23	0.9128	100	97	
			M4	-72	100	-267	124	0.6402	90	100	

Descriptive statistics of the errors (ms) incurred by each method in detecting gait events and agreement with M_{ref} for calculating stride durations; superscripts ^{*}, [^] and [†] indicate where the difference between two mean errors was statistically significant (p<0.01), as revealed by post hoc tests; sensitivity and positive predictive values (PPV) are given as percentages of the total number of events detected; for each gait event, the best performing method(s) is emboldened.

<https://doi.org/10.1371/journal.pone.0254813.t002>

Table 3. Descriptive statistics of errors incurred by best methods to calculate stance duration on each surface.

(%)	Surface	Method	Mean	SD	LLoA	ULoA	Sensitivity (%)	PPV (%)
FORELIMB								
WALK	Asphalt	M1 _p	0.92	2.98	-2.06	3.90	100	99
	Grass	M1 _p	0.52	2.14	-1.61	2.66	98	99
	Sand	M1 _p	1.19	5.29	-4.10	6.49	100	97
TROT	Asphalt	M2 _p	1.09 ^{**} , ^{***}	8.68	-7.59	9.77	99	100
	Grass	M2 _p	-0.57 ^{**}	6.67	-7.24	6.10	100	100
	Sand	M2 _p	-1.09 ^{***}	7.68	-8.77	6.58	99	100
HINDLIMB								
WALK	Asphalt	M1 _p	0.10	3.42	-3.31	3.52	100	100
	Grass	M1 _p	-0.33	7.42	-7.75	7.09	99	100
	Sand	M1 _p	0.22	3.60	-3.38	3.82	99	98
TROT	Asphalt	M1 _p	0.50	2.38	-1.87	2.88	99	99
	Grass	M1 _p	0.92	2.26	-1.34	3.18	97	100
	Sand	M1 _p	1.16	4.28	-3.12	5.44	98	100

Descriptive statistics of the errors (as % of stride duration) incurred by the best methods to calculate stance duration; superscripts ^{**}p<0.01 and ^{***}p<0.001 indicate where two mean errors differed significantly, as revealed by post hoc tests.

<https://doi.org/10.1371/journal.pone.0254813.t003>

Applications of the novel methods M1 and M2 to the pastern data led to even better results than those found for the cannon. For most events, although the average errors were similar in many cases, the distribution of the error was usually smaller for M1_p than M1_c. In fact, M1_c performed better than M1_p in only one case- hindlimb hoof-off at walk- where the SDs were similar but magnitude of the mean error was 5ms bigger for the pastern data than cannon.

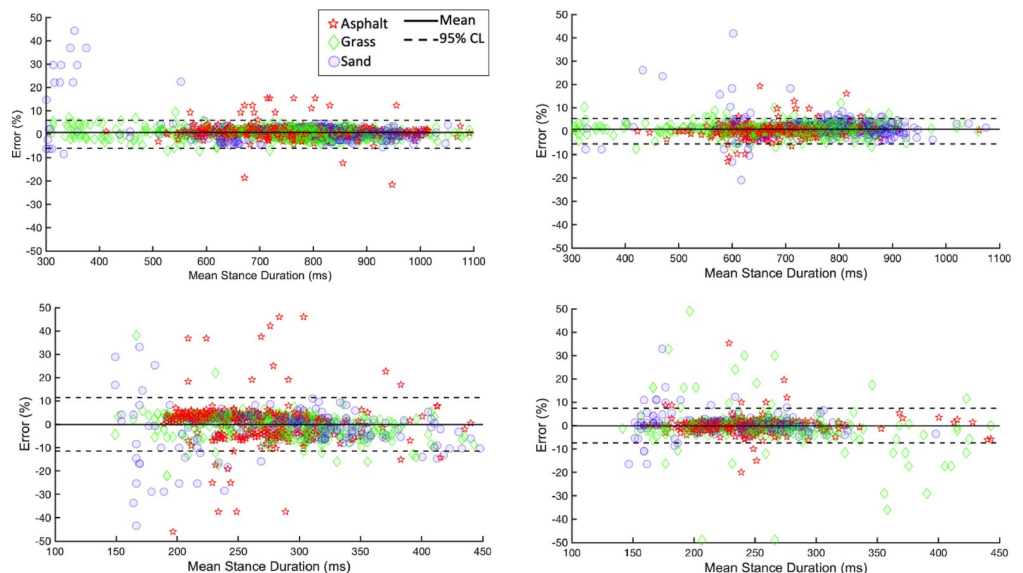


Fig 6. Bland-Altman plots of novel methods compared to reference method to calculate stance duration on each surface. The difference between stance durations calculated using reference method and best novel method for each event (shown as a percentage of stride duration) as a function of the mean of the two. Stance durations from control surface are shown as red stars, from grass as green diamonds and from sand as blue circles. The solid horizontal lines (-) indicate the mean error and dashed horizontal lines (- -) the ULoA and LLoA.

<https://doi.org/10.1371/journal.pone.0254813.g006>

This difference was statistically significant but a 5ms (<0.5% of a stride duration) difference is only marginal. In light of this difference being very small and the convenience of having only one site of sensor placement for all events, the pastern was deemed the best location at which to record data for gait event detection.

The higher precision of $M1_p$ is likely due to the pasterns being closer to the site of the hoof impact and lift-off than the cannons, where accelerations associated with the gait event at the hoof might be more attenuated [28] and there is less chance that the peaks of interest could become lost in the noise of the signal. Indeed, it was previously reported that 21% of the initial impact vibration of the forelimb hoof-on remains after the junction of the middle and proximal phalanx, where the pastern sensor is mounted, compared to only 13% after the junction of the proximal phalanx and third metacarpal, where the cannon sensor is mounted [28].

The superiority of acceleration-based methods was confirmed by the comparison between $M1$ and $M2$, with the latter performing slightly worse for most events even if still having overall good accuracy (-7 to 15ms) and precision (9 to 38ms). The only cases in which $M2_p$ was more accurate than $M1_p$ was at trot for both forelimb hoof-on (-2ms compared to -4ms) and hoof-off (4ms compared to -18ms).

Considering the results obtained for the event detections, $M2_p$ is recommended to calculate forelimb stance durations at trot and $M1_p$ for all other cases.

It has previously been reported that mild and moderate forelimb lameness can cause reductions in trot stride duration of 11ms and 31ms, respectively [8]. The mean errors incurred by the described pastern-based methods to detect hoof-on events at trot (-2ms for forelimbs and 1ms for hindlimbs) are small enough that the methods would be reliable for measuring such changes.

4.2 Comparison between surfaces

When using $M1_p$ and $M2_p$ as recommended, stance durations could be calculated with very high accuracy, with mean errors <1.5% of a stride cycle for all limbs and gaits on all surfaces. The errors on asphalt were lower than those reported in the literature on an equivalently hard surface (laboratory), which ranged from -0.8% of a stride duration for the hindlimbs at walk to 9.1% for the hindlimbs at trot [9].

In the literature, it was reported that unilateral forelimb lameness increased the stance phase of the ipsilateral hindlimb by 1.3% and that of both forelimbs by 2.3% in horses trotting on a treadmill [7]. The mean error in trotting stance durations calculated using the described methods range from 0.1 to 1.16% of a stride duration, suggesting that the methods are sufficiently accurate to detect these lameness-dependent changes.

Small differences between the surfaces were observed for the mean errors and SD of the errors, but none of these differences were of noteworthy magnitude, and they were only statistically significant for the forelimbs at trot. Therefore, it is concluded that the chosen methods had an equivalent performance on all surfaces when used to calculate stance durations.

In the case of the hindlimbs at trot, the Bland-Altman plots appear to show that the method tended to underestimate the stance duration for mean stance durations of over 300ms. However, the points above 300ms which fell below the LLoA (10 points) are very few compared to the points which fell within the LoA. Conversely, the Bland-Altman plot for the hindlimbs at trot suggest that the method tended more frequently to overestimate the stance duration for mean stance durations of below 300ms. However, the points here falling above the ULoA, compared to those falling within the LoA, are again only a small minority. These two observations could warrant further testing to determine whether there is a trend between the duration of the stance phase and whether the methods tend to more frequently under- or overestimate the stance duration.

No significant effects due to the individual horse were seen and the Bland-Altman plots suggest that the errors incurred were consistent for different durations of stance for both limbs and gaits. This indicates that the method can be used for different horses and also in different surface conditions.

4.3 Limitations

The most significant limitations to this research relate to the use of the hoof-based method [13] as reference values. This method has only been validated for data collected in the lab, on one hard surface, with results compared to a force plate. However, a previous study which used a hoof-mounted accelerometer to record accelerations [3], found that gait events could be manually selected from signals recorded on both hard and soft surfaces. Furthermore, visual inspection of Acc_R and $AngVel_R$ recorded from the hooves on the softer surfaces in the present study, revealed that they were comparable to those recorded on asphalt, with similar peaks prominent. Therefore, it was assumed that the hoof-based method held for all surfaces. Although a varied group was selected in the interests of yielding widely applicable results, the cohort size, while larger than in many similar studies, was still somewhat limited and it would be beneficial to validate the methods for more individuals. In the future, use of pastern mounted sensors should also be investigated for other gaits.

5 Conclusions

In conclusion, this paper has compared gait event detection using different processing methods applied to data collected by IMUs attached to the fore- and hindlimb pasterns and cannons. The performance of these methods was consistent across the entire, varied cohort. Pastern-based methods have proven to be superior to the current state of the art cannon-based alternatives. Stance durations calculated using events detected by a method of peak detection applied to the resultant angular velocity (for forelimbs at trot) and resultant linear acceleration (for all other events) recorded at the pastern level, incurred consistent errors for data recorded on asphalt, grass and sand. The methods developed here enable gait event detection under a range of surface conditions and for a varied cohort of subjects. This can certainly be extremely beneficial for future studies undertaken in a variety of field conditions.

Acknowledgments

The authors wish to thank Marij Tijssen, for her assistance in implementing her published methods of gait event detection and Dr Filipe Serra Bragança for advice regarding application of his methods. Further thanks go to Dr Caroline Clarke for the loan of her horses and her assistance in data collection.

Author Contributions

Conceptualization: Eloise V. Briggs, Claudia Mazzà.

Formal analysis: Eloise V. Briggs.

Investigation: Eloise V. Briggs.

Writing – review & editing: Eloise V. Briggs, Claudia Mazzà.

References

1. Egan S, Brama P, McGrath D. Research trends in equine movement analysis, future opportunities and potential barriers in the digital age: A scoping review from 1978 to 2018. *Equine Vet J*. 2019; 813–24. <https://doi.org/10.1111/evj.13076> PMID: 30659639
2. Robilliard JJ, Pfau T, Wilson AM. Gait characterisation and classification in horses. *J Exp Biol*. 2007; p. 187–97. <https://doi.org/10.1242/jeb.02611> PMID: 17210956
3. Witte TH, Knill K, Wilson AM. Determination of peak vertical ground reaction force from duty factor in the horse (*Equus caballus*). *J of Exp Biol*. 2004; 207: 3639–48.
4. Clayton H. Classification of collected trot, passage and piaffe based on temporal variables. *Equine Vet J Suppl*. 1997; 23: 54–7. <https://doi.org/10.1111/j.2042-3306.1997.tb05054.x> PMID: 9354290
5. Holström M, Fredricson I, Drevemo S. Biokinematic differences between riding horses judged as good and poor at the trot. *Equine Vet J Suppl*. 1994; 17: 51–6.
6. Clayton H. Cinematographic analysis of the gait of lame horses. *J Equine Vet Sci*. 1986; 6: 70–8.
7. Buchner HHF, Savelberg HHCM, Schamhardt HC, Barneveld A. Temporal stride patterns in horses with experimentally induced fore- or hindlimb lameness. *Equine Vet J*. 1995; 18: 161–5.
8. Weishaupt MA, Wiestner T, Hogg HP, Jordan P, Auer JA. Compensatory load redistribution of horses with induced weight-bearing forelimb lameness trotting on a treadmill. *Vet J*. 2006; 171(1): 135–46. <https://doi.org/10.1016/j.tvjl.2004.09.004> PMID: 15974567
9. Bragança FM, Bosch S, Voskamp JP, Marin-Perianu M, Van der Zwaag BJ, Vernooij JCM, et al. Validation of distal limb mounted inertial measurement unit sensors for stride detection in Warmblood horses at walk and trot. *Equine Vet J*. 2017; p. 545–51. <https://doi.org/10.1111/evj.12651> PMID: 27862238
10. Serra Bragança FM, Hernlund E, Thomsen MH, Waldern NM, Rhodin M, Byström A, et al. Adaptation strategies of horses with induced forelimb lameness walking on a treadmill. *Equine Vet J*. 2020; 00: 1–12. <https://doi.org/10.1111/evj.13344> PMID: 32888199
11. Self Davies ZT, Spence AJ, Wilson AM. External mechanical work in the galloping racehorse. *Biol Lett*. 2019; 15: 20180709. <https://doi.org/10.1098/rsbl.2018.0709> PMID: 30958128
12. Self Davies ZT, Spence AJ, Wilson AM. Ground reaction forces of overground galloping in ridden Thoroughbred racehorses. *J of Exp Biol*. 2019; 222(16): 204107. <https://doi.org/10.1242/jeb.204107> PMID: 31444280
13. Tijssen M, Hernlund E, Rhodin M, Bosch S, Voskamp JP, Nielen M, et al. Automatic hoof-on and -off detection in horses using hoof-mounted inertial measurement unit sensors. *PLoS ONE*. 2020 June; 15(6): e0233266.
14. McCracken MJ, Kramer J, Keegan KG, Lopes M, Wilson DA, Reed SK, et al. Comparison of an inertial sensor system of lameness quantification with subjective lameness evaluation. *Equine Vet J*. 2012; 44: 652–6. <https://doi.org/10.1111/j.2042-3306.2012.00571.x> PMID: 22563674
15. Keegan KG, Wilson DA, Kramer J, Reed SK, Yonezawa Y, Maki H, et al. Comparison of a body-mounted inertial sensor system-based method with subjective evaluation for detection of lameness in horses. *Am J Vet Res*. 2013; 74(1): 17–24. <https://doi.org/10.2460/ajvr.74.1.17> PMID: 23270341
16. Rhodin M, Roepstorff L, French A, Keegan KG, Pfau T, Egenvall A. Head and pelvic movement asymmetry during lungeing in horses with symmetrical movement on the straight. *Equine Vet J*. 2016; 48: 315–20. <https://doi.org/10.1111/evj.12446> PMID: 25808700
17. Olsen E, Anderson PH, Pfau T. Accuracy and precision of equine gait event detection during walking with limb and trunk mounted inertial sensors. *Sensors*. 2012; 12(6): 8145–56. <https://doi.org/10.3390/s120608145> PMID: 22969392
18. Holström M, Magnusson LE, Philipsson J. Variation in conformation of Swedish warmblood horses and conformational characteristics of elite sport horses. *Equine Vet J*. 1990; 22(3): 186–93. <https://doi.org/10.1111/j.2042-3306.1990.tb04245.x> PMID: 2361507
19. Sánchez MJ, Gómez MD, Peña F, Monterde JG, Morales JL, Molina A, et al. Relationship between conformation traits and gait characteristics in Pura Raza Español horses. *Archiv Tierzucht*. 2013; 56(13): 137–48.
20. Higler MH, Brommer H, L'Ami JJ, De Grauw JC, Nielen M, van Weeren PR, et al. The effects of three-month oral supplementation with a nutraceutical and exercise on the locomotor pattern of aged horses. *Equine Vet J*. 2014; 46(5): 611–17. <https://doi.org/10.1111/evj.12182> PMID: 24011144
21. Willemen MA, Savelberg HHCM, Barneveld A. The improvement of gait quality of sound Warmblood horses by normal shoeing and its effect on the load on the lower forelimb. *Livestock Production Science*. 1997; 52(2): 145–53.

22. Barstow A, Bailey J, Campbell J, Harris C, Weller R, Pfau T. Does 'hacking' surface type affect equine forelimb foot placement, movement symmetry or hoof deceleration during ridden walk and trot exercise? *Equine Vet J*. 2019; 51(1): 108–14. <https://doi.org/10.1111/evj.12952> PMID: [29665054](https://pubmed.ncbi.nlm.nih.gov/29665054/)
23. Pratt WK. Chapter 10: Image Enhancement. In Gonzalez RC, Woods E. *Digital Image Processing* 4th Ed.: Pearson; 2007. p. 277–83.
24. Sapone M, Martin P, Mansour KB, Château H, Marin F. Comparison of trotting stance detection methods from an inertial measurement unit mounted on the horse's limb. *Sensors*. 2020; 20(10): 2983. <https://doi.org/10.3390/s20102983> PMID: [32466104](https://pubmed.ncbi.nlm.nih.gov/32466104/)
25. Bland JM, Altman DG. Statistical methods for assessing agreement between two methods of clinical measurement. *Int J Nurs Stud*. 2010 Aug; 47(8): 931–6.
26. Koo TK, Li MY. A guideline of selecting and reporting intraclass correlation coefficients for reliability research. *J Chiropr Med*. 2016; 5(12): 155–63. <https://doi.org/10.1016/j.jcm.2016.02.012> PMID: [27330520](https://pubmed.ncbi.nlm.nih.gov/27330520/)
27. Parikh R, Mathai A, Parikh S, Sekhar GC, Thomas R. Understanding and using sensitivity, specificity and predictive values. *Indian J Ophthalmol*. 2008; 56(1): 45–50. <https://doi.org/10.4103/0301-4738.37595> PMID: [18158403](https://pubmed.ncbi.nlm.nih.gov/18158403/)
28. Willemen MA, Jacobs MW, Schamhardt HC. In vitro transmissions and attenuation of impact vibrations in the distal forelimb. *Equine Vet J Suppl*. 1999; 30: 245–8.