



## LJMU Research Online

Shahzad, MN, Ali, H, Saba, T, Rehman, A, Kolivand, H and Ali Bahaj, S

**Identifying patients with PTSD utilizing resting-state fMRI data and neural network approach**

<http://researchonline.ljmu.ac.uk/id/eprint/15310/>

### Article

**Citation** (please note it is advisable to refer to the publisher's version if you intend to cite from this work)

**Shahzad, MN, Ali, H, Saba, T, Rehman, A, Kolivand, H and Ali Bahaj, S  
Identifying patients with PTSD utilizing resting-state fMRI data and neural network approach. IEEE Access. ISSN 2169-3536 (Accepted)**

LJMU has developed **LJMU Research Online** for users to access the research output of the University more effectively. Copyright © and Moral Rights for the papers on this site are retained by the individual authors and/or other copyright owners. Users may download and/or print one copy of any article(s) in LJMU Research Online to facilitate their private study or for non-commercial research. You may not engage in further distribution of the material or use it for any profit-making activities or any commercial gain.

The version presented here may differ from the published version or from the version of the record. Please see the repository URL above for details on accessing the published version and note that access may require a subscription.

For more information please contact [researchonline@ljmu.ac.uk](mailto:researchonline@ljmu.ac.uk)

<http://researchonline.ljmu.ac.uk/>

Date of publication xxxx 00, 0000, date of current version xxxx 00, 0000.

Digital Object Identifier 10.1109/ACCESS.2017.DOI

# Identifying patients with PTSD utilizing resting-state fMRI data and neural network approach

MIRZA NAVEED SHAHZAD<sup>1</sup>, HAIDER ALI<sup>1</sup>, TANZILA SABA<sup>2</sup> (Senior Member, IEEE), AMJAD REHMAN<sup>2</sup> (Senior Member, IEEE), HOSHANG KOLIVAND<sup>3,4</sup> and SAEED ALI BAHAJ<sup>5</sup>.

<sup>1</sup>Department of Statistics, University of Gujrat, Gujrat, Pakistan (e-mail: nvd.shzd@uog.edu.pk)

<sup>2</sup>Artificial Intelligence and Data Analytics (AIDA), CCIS Prince Sultan University Riyadh Saudi Arabia (e-mail: drstanzila@gmail.com, rkamjad@gmail.com)

<sup>3</sup>Department of Computer Science, Liverpool John Moores University, Liverpool, UK, L3 3AF (e-mail: H.Kolivand@ieee.org)

<sup>4</sup>School of Computing and Digital Technologies, Staffordshire University, Staffordshire, UK

<sup>5</sup>MIS Department College of Business Administration, Prince Sattam bin Abdulaziz University, Alkharj Saudi Arabia (e-mail: s.bahaj@psau.edu.sa)

Corresponding author: Mirza Naveed Shahzad (e-mail: nvd.shzd@uog.edu.pk).

This work was supported by University of Gujrat, Gujrat, Pakistan and Artificial Intelligence and Data Analytics (AIDA), CCIS Prince Sultan University Riyadh Saudi Arabia. Authors are thankful for support. Data used in preparation of this article were obtained from the Alzheimer's Disease Neuroimaging Initiative (ADNI) database (adni.loni.usc.edu). As such, the investigators within the ADNI contributed to the design and implementation of ADNI and/or provided data but did not participate in analysis or writing of this report. A complete listing of ADNI investigators can be found at: [http://adni.loni.usc.edu/wp-content/uploads/how\\_to\\_apply/ADNI\\_Acknowledgement\\_List.pdf](http://adni.loni.usc.edu/wp-content/uploads/how_to_apply/ADNI_Acknowledgement_List.pdf)

## ABSTRACT

**Purpose:** The primary aim of the study is to identify the existence of the post-traumatic stress disorder (PTSD) in an individual and to detect the dominance level of each affected brain region in PTSD using rs-fMRI data. This will assist the psychiatrists and neurologists to distinguish impartially between PTSD individuals and healthy controls for the brain-based treatment of PTSD.

**Methods:** Twenty-eight individuals (14 with PTSD, 14 healthy controls) were assessed to obtain rs-fMRI data of their six brain regions-of-interest. The rs-fMRI data analyzed by the Artificial Neural Network (ANN), adopting the training-validation-testing approach to classify PTSD and to identify the most affected brain region due to PTSD. The classification accuracy is justified by a variety of different methods and metrics.

**Results:** Three ANN models were established to attain the study's purpose using the susceptible regions in the right, left, and both hemispheres, and the classification accuracy of ANN models achieved 79%, 93.5%, and 94.5%, respectively. The prediction accuracy even increased in the independent holdout sample using trained models. The developed models are reliable, intellectually attractive and generalize. Additionally, the most dominant region in the PTSD individuals was the left hippocampus and the least was the right hippocampus.

**Conclusion:** The present investigation achieved high classification accuracy and identified the brain regions those contributed most to differentiating PTSD individuals from healthy controls. The results indicated that the left hippocampus is the most affected brain region in PTSD individuals. Therefore, our findings are helpful for practitioners for diagnostic, medication, and therapy of the affected brain regions by knowing the strength of infected regions.

**INDEX TERMS** artificial neural network, amygdala, calibration plot, health-care, hippocampus, medial prefrontal cortex, PTSD, psychological harm, rs-fMRI

## I. INTRODUCTION

POST-traumatic stress disorder (PTSD) is an anxiety disorder, it develops after a serious and extremely ter-

rifying experience like domestic, school or community violence, medical trauma, disaster, war, terrorist attacks, refugee trauma, abuse, or sexual assaults [1]– [4], which may re-

experience in the variety of traumatic events [5]. PTSD patients always try to avoid such circumstances and thinking those may lead to the traumatic event, in this way they may suffer from guilt, irritability, quarantine, dysphoria, alienation and sleep, and concentration disorder [1], [6]. In the general population, at least 7% of people fulfill the PTSD occurrence criteria at some time in their lives [7]. PTSD due to sexual assault or rape is more likely to develop than any other traumatic event [8]. Many studies also revealed the high rate of PTSD in war soldiers and war victimized [9]–[11]. At any reason for its occurrence, PTSD is a serious incapacitating health condition in itself. This disorder finally leads to disturbing the sociability, personal or family life, and become the reason for domestic violence, marital conflicts, occupational instability, and difficulties in parenting [12]. The patients with PTSD have a high association with negative thoughts that severely impair their daily lives and, intend to increase suicidal tendencies [12]–[13].

PTSD prevalence is mostly observed subjectively in cross-sectional psychophysiological studies through self-reporting of symptoms, skin conductance, facial reactivity, heart rate, and such other tools [14]. Only limited studies have investigated this disorder neurologically, even the potential risk factor of PTSD development is the structural brain abnormalities [15], [16]. About the neural substrates of PTSD, most of the neuroimaging studies have revealed many significant findings and examined the structural changes in the brain associated with PTSD symptomatology [17]. Such vulnerable factors are supportive as accurate therapeutic and diagnosis intervention in the timely aftershock of the traumatic event to decrease the possibility of escalating chronic PTSD [18]. In recent years the imaging techniques like Positron Emission Tomography, Single Photon Emission Computed Tomography and functional Magnetic Resonance Image (fMRI) are used to examine or visualize the activation in the brain for specific regions by measuring regional Cerebral Blood Flow (rCBF), blood oxygen levels and neuroreceptor density. These activations are retrieved from the various brain regions of the PTSD patient or healthy control [19].

PTSD affects the different brain regions including the hippocampus, insula, prefrontal cortex, amygdala, medial prefrontal cortex, ventromedial prefrontal cortex, thalamus, para-hippocampus, orbitofrontal cortex, and among other brain regions [19], [20] and each region is affected with a different rate of tendency. In the pathophysiology studies of PTSD, commonly three main regions, hippocampus, medial prefrontal cortex, and amygdala are identified by substantial researches in neuroimaging. These regions involve in memory as well as in the stress response [21]. Hippocampus is presupposed in memory processes and responsible for producing context during fear conditioning [22], [23]. Hippocampus and the amygdala interact with each other during emotional memories and in the study of trauma like PTSD, the interaction between both is exceedingly relevant [24]. In the process of extinction of fear conditioning, the medial prefrontal cortex is involved and PTSD patients exhibit such fear

responses in daily life [25], [26]. The third region of interest is the amygdala, which involves in the response of depression and emotional information [27], fear learning processes [28], and supportive for PTSD detection [29]. The severity of PTSD and the amygdala responses have a significant positive correlation with each other [30].

The fMRI is one of the most excellent techniques to collect brain activation data [31], even of PTSD individuals and healthy controls, it is a great source to find the activation in the regions of the brain while resting or performing a different visual, sensory and cognitive task. The resting-state fMRI (rs-fMRI) recordings are adequate to treat PTSD patients, even useful to observe the treatment response [32]. The rs-fMRI is useful for the clinical, memory, mental status investigation of the population and it provides the functional relationship between the areas of the brain [33]. Therefore, this paper only focused on the amygdala, hippocampus, and medial prefrontal cortex (brain regions) to classification of PTSD individuals from healthy control individuals using the rs-fMRI data. The present study also diagnosed the dominance level of each affected brain region in classification among the left and right regions of the hippocampus, medial prefrontal cortex and, the amygdala. The classification was achieved through the Artificial Neural Network (ANN). The accurate classification between PTSD individuals and healthy controls will helpful for both neurologists and psychiatrists.

The ANN applications are enormous, ranging from voice recognition to cancer detection. Its pros outweigh the cons and make the ANN a favored modeling technique for classification, machine learning, regression, and predictions [34]. As it is flexible, reliable, fast, parametric, adaptive, multitasking, easily handle complexity in data, can handle non-linearity of the data, can deal with a large number of inputs, no higher-level background statistics require, has the ability to decide by commenting on the similar event to learn the event, has the ability to split the problem of classification into a layered network [34]. In limited cases have been reported as time-consuming, expensive, require a lot of data for training, leads to over-fitting, hard to know how much each independent variable is influence on dependent variables [34]. However, the pros are more appealing than cons and cons are not much serious in this advance computing era.

ANN plays a notable role in fMRI studies for the classification and detection of the affected brain regions. Recently, Anagnostopoulou *et al.* [35] took an assessment of Autism by ANN and obtained improved results in the early diagnostic process. He *et al.* [36] used the ANN and support vector machine for the early detection of cognitive deficits in preterm infants using rs-fMRI and more robust results drawn by ANN and justified the ANN potentiality. Thomas and Chandran [37] classified the autistic and healthy control using ANN by the fMRI dataset. The classification and identification of decision-making voxels of the fMRI dataset were achieved via ANN by Ahmad, Ahmad, and Dar [38], and obtained very improved results.

Previous work on the classification of the PTSD patients and healthy controls using the rs-fMRI is limited but numerous studies worked on the same objective based on the survey data. In the present study, our interest is on the classification of PTSD patients and healthy controls by identifying affected brain regions using the rs-fMRI data, as neuroimaging data is more appropriate to accurate diagnoses of the brain disorder. This contribution will lead to the most relevant and efficient treatment by neurobiologists, neurologists, and psychiatrists. This was the main motivation behind considering and developing the ANN models for this study. In previous work, Christova et al. [39] identified the PTSD patients using neural correlation and prewhitened rs-fMRI data and found sensitivity and specificity 93.3% and 95.2%, respectively. Yuan et al. [40] classified the PTSD individuals with the pretreatment and posttreatment scans and obtained 72.5% accuracy by Support Vector Machine (SVM). Banerjee et al. [41] developed a deep belief network model and transfer learning strategy to compare with SVM, and achieved PTSD identification accuracies 61.53%, 74.99%, and 57.68%, respectively. The 42 PTSD and 39 control subjects with resting-state electroencephalogram data used in classification using linear discriminant analysis, SVM, random forest, and Fisher geodesic minimum distance to the mean approaches by Kim et al. [42], and 66.54%, 61.11%, 60.99%, and 75% accuracies were obtained, respectively. Similarly, Zhu et al. [43] investigated the multivariate pattern analysis with a relevance vector machine to classify PTSD and 89.2% accuracy was achieved to classify the PTSD. The present work expands on this previous literature, and our purposed approach will more accurately classify the PTSD subject than previous studies and additionally will reveal which region is playing the most dominant role to classify the PTSD subjects from healthy control subjects by obtaining rs-fMRI data.

The structure of this paper is as follows: Second section introduces the methodology that is used to achieve the objectives. The third section discusses the rs-fMRI data acquisition from PTSD individuals and controls in details. The fourth section presents the pre-processing of the rs-fMRI data. The data analysis and the empirical results with goodness-of-fit criteria are discussed in section fifth. The sixth section justified classification accuracy by holdout sample set, and the seventh section is for the discussion of the study. Finally, the study is concluded in the last section to make a conclusion and gives a prospect.

## II. METHODOLOGY

The study aimed to develop a prediction model to classify PTSD and control individuals using rs-fMRI data. Only by observing the activation pattern in the scans of the brain visually, not leads to proper detection and classification of an individual with PTSD or a healthy control. Therefore, an advanced analysis is required to take an accurate decision, for this purpose ANN technique is considered in this study to classify the PTSD individual from the healthy control. In this way, the concerns can diagnose the disorder and treat it

properly.

An artificial intelligence method that was motivated by nervous system protocol, ANN was considered and used, as sketched in Figure 1. As it is considered the best technique due to its flexibility, power, cost-effectiveness, and convenience of usage. ANNs are efficiently used in neurophysiology and robotics for solving tasks of classification [44]. The ability of ANN to model complex nonlinear relationships potentially is an attractive property for the researchers. It is typically used for classification or prediction purposes in many fields, including medical and engineering as well. The formation of ANN involves one input, one or more hidden, and one output layer. The activation function and number of units (neurons) in the hidden and output layer determines to minimize the error value using the back-propagation algorithm trial.

The training-validation-testing approach was adopted and it was implemented by splitting datasets into two groups, one group referred to the analysis group and the other as testing group. The analysis group was further divided into training and validation sample to develop the best fitted ANN models. The training sample was used to train the ANN classifier and the validation sample was used to estimate the prediction error rate of the trained ANN models. The ANN network establishes by training sample using various weights in the hidden layer and observes the output accuracy of the trained network by comparing it with the validation sample. The testing group sample, referred as the hold-out sample that was used to test the validity of the finalized ANN models for the classification in between PTSD and healthy control, and this sample set was not involved in in-sample fitting [45]. To observe the predictive accuracy of the models, 5-fold cross-validation was employed, in order to minimize the bias associated with the random sampling of the training, validation and holdout data samples. The methodology is presented by the flowchart as in Figure 2. The sensitivity, specificity, false-positive-rate, false-negatives-rate were calculated to observe the in-depth results of the models. The receiver operating characteristic (ROC) curve was also sketched to evaluate the classification accuracy, as this curve is a plot of the sensitivity and specificity. The second goal was to rank the affected brain regions associated with PTSD and contributed most to the classification; such results were obtained by the ANN model using the normalized importance graph. Finally, the activated voxels values of one PTSD and one healthy control's brain were used to evaluate the suggested model in the holdout sample as real-time analysis.

In literature, some researchers concluded that the regions in the left hemisphere affected more than the regions in the right hemisphere, due to PTSD. Therefore, this study obtained the rs-fMRI data of the hippocampus, amygdala, and medial prefrontal cortex brain regions from both left and right hemispheres to justify the most disturbing hemisphere and the brain region. Additionally, the data of both hemispheres were combined to get the data of six brain regions to observe the classification accuracy with the tendency level of each

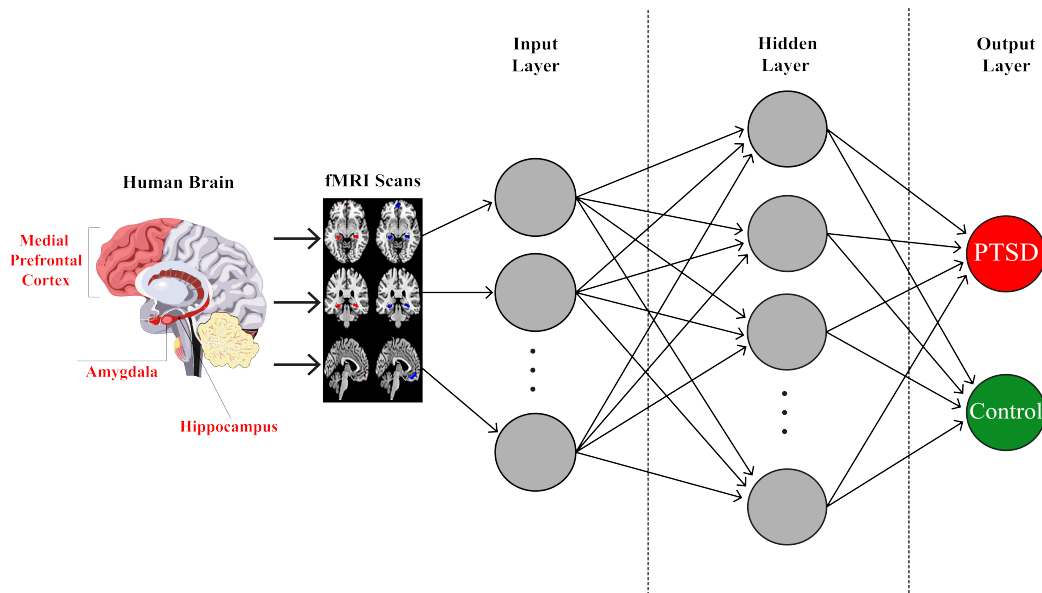


FIGURE 1. A conceptual figure to describe ANN for the present study

affected brain region. In this way, three datasets were in hand for the correct identification and classification of the PTSD individual and healthy control by applying three times ANN analysis. In the first ANN model, three regions-of-interest (right amygdala, right hippocampus, and right medial prefrontal cortex) of the right hemisphere were taken as input variables and named as  $ANN_{RH}$ , in the second ANN three regions (left amygdala, left hippocampus, and left medial prefrontal cortex) of the left hemisphere were taken as input variables and named as  $ANN_{LH}$  and in the third ANN, the mentioned six regions of both hemispheres were considered as independent variables and denoted by the model  $ANN_{BHS}$ . In all three models, the binary variable (PTSD individual or healthy control) is considered as a dependent variable. In this study, 14 PTSD and 14 healthy controls were selected for the analysis. A total of 28 subjects were distributed into three groups for the training, validation, and testing sample. The scans of randomly selected 9 PTSD and 9 healthy controls, 1260 (almost 64% of the total scans) used as a training sample. The activated scans of randomly selected 4 PTSD and 4 healthy controls, 560 (almost 29% of the total scans) were taken as validation sample without omitting any data unit. And remaining 2 subjects (1 PTSD and 1 healthy control) were in the testing group and their 140, 70 scans of PTSD and 70 scans of healthy (almost 8% of the total scans) holdout for the evaluation of the prediction accuracy of the models.

### III. DATA ACQUISITION

A recent large study conducted by the Department of Defense and Alzheimer's Disease Neuroimaging Initiative (DoDADNI) on elder Veterans and healthy controls those were served in Vietnam. The data was obtained from the Do-

DADNI [46] and the detailed description of the participants is given in Table 1. To get the access to the DoDADNI datasets, we applied for that and on the acceptance of the request, the access was granted on the well-defined protocols. Then for the present study, only the PTSD individuals and healthy controls were targeted from that database. A sample of PTSD individuals and healthy controls has been sampled according to the reliability criteria. Therefore, rs-fMRI (open eyes) scans were retrieved from 14 PTSD and 14 control males with the average age of 70.00 and 73.40 years, respectively. Other characteristics of the individuals are explained in Table 1. Moreover, the PTSD brain scans had the properties like, field strength = 3.0 tesla, flip angle = 90.0 degree, manufacturer = GE medical systems, matrix X = 64.0 pixels, matrix Y = 64.0 pixels, mfg Model = discovery mr750, pixel spacing X = 3.2813mm, pixel spacing Y = 3.2813mm, pulse sequence = EP/GR, slices = 5952.0, slice thickness = 3.2999mm, TE = 30.0ms and TR = 2900.0ms. The rs-fMRI scans of controls had the same properties as mentioned above for the PTSD individuals. Each PTSD and each healthy control individual have 140 scans and every scan has 48 slices with axial view slices. The rs-fMRI data were retrieved for six regions, three from each hemisphere of the brain named the hippocampus, medial prefrontal cortex, and amygdala.

### IV. DATA PRE-PROCESSING

The standard way was adopted to pre-process and analyze the rs-fMRI data by MATLAB (2018) and SPM-12 packages. In pre-processing the rs-fMRI scans was reorientation, smoothed, realigned, normalized, and slice-timing corrected, before the statistical analysis. To remove the respiratory frequency noise, the 0-0.2 Hz cutoff frequency of the filter was used. The pre-processed scans were analyzed to detect the

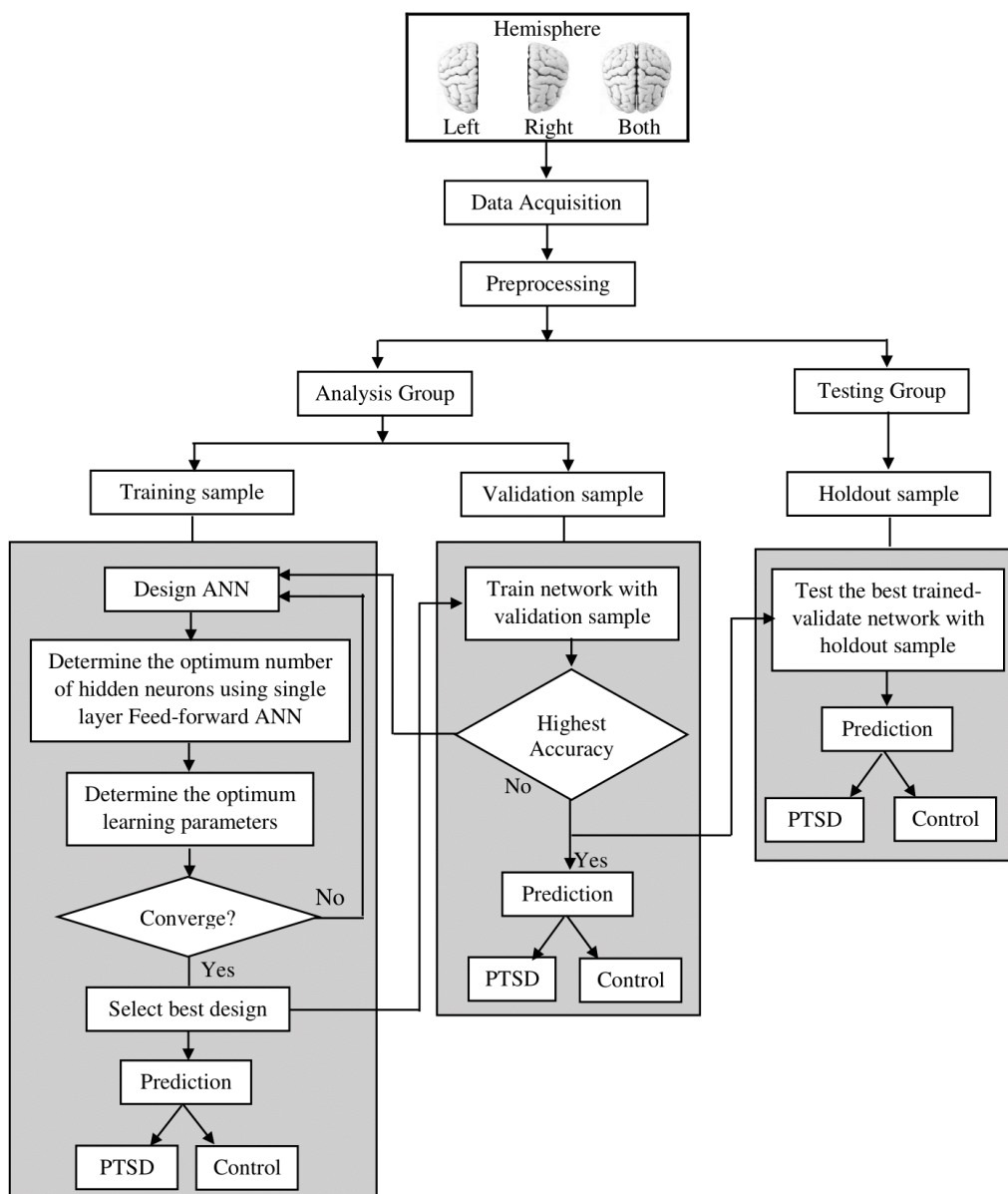


FIGURE 2. Flow-chart outline for the ANN model by considering training-validation-testing analysis approach.

TABLE 1. General characteristics of patients and healthy controls

Participants	PTSD	Control
Gender	Male	Male
Subjects	14	14
Average age	70	73.40
Participants Detection	Veteran of the Vietnam War Identified by records and verified by assessment CAPS with atleast 50 score	Veteran of the Vietnam War No such record existed
rs-fMRI scans	Open eyes	Open eyes
Pre-processing scans slices	Axial (X)=64, Sagittal(Y)=64 and Coronal (Z)=48	Axial (X)=64, Sagittal (Y)=64 and Coronal (Z)=48
Post-processing scans slices	Axial (X)=75, Sagittal(Y)=95 and Coronal (Z)=79	Axial (X)=75, Sagittal(Y)=95 and Coronal (Z)=79
Inclusion Criteria	History of head trauma associated with injury, cognitive complaints, or loss of consciousness for more than 5 minutes	Comparable in age, gender, and education with PTSD groups
Exclusion Criteria	Mild cognitive dementia, history of bipolar, psychosis, stroke, hypersensitivity, alcohol, Aneurysm clips, metal implants and/or claustrophobia. Unstable major medical condition	And any illness affecting brain function

activation in the selected brain regions by taking the model specification, estimation, and results steps. The block design and all 140 scans were used in the step of the *model specification* to specify the visual conditions of PTSD individual and healthy control. Initially, the total rs-fMRI scans were  $(14 + 14) \times 140 = 3920$  and after applying block design on 140 rs-fMRI scans, the activated scans  $(14+14) \times 70 = 1960$  were obtained. The next step after the completion of the *model specification* was the *estimation*, in this step, the SPM.mat file used to estimate the betas of every condition. In the third step *results*; contracts were used for the comparison of the beta scans with the t-test. As usual, only the contrasts with a sum to zero were considered.

Next, the activation of the voxels in the brains' regions-of-interest of the PTSD individuals and healthy controls were highlighted by specifying the threshold value as shown in Figure 3 with the different colors. Where the Sub-figure 3a presents activation in the right hemisphere, Sub-figure 3b shows activation in the both hemispheres and Sub-figure 3c presents activation in the left hemisphere. In these sub-figures, the blue color indicates the activation in the brain of PTSD individuals, the red color shows activation in the brain of healthy controls and pink specifies the activation in the brain of both PTSD individuals and healthy control. Sub-figure 3d highlights the activation in the amygdala, hippocampus, and medial prefrontal cortex regions of healthy control, and similarly in Sub-figure 3e highlights the activation in brain of PTSD individuals. The activation in the brain of both PTSD and control is presented in Sub-figure 3f for comparison.

To compare the activation of the regions-of-interest (Amygdala, Hippocampus, and Medial prefrontal cortex), we made the multislice view for healthy control and PTSD individual as given in Figure 4.

## V. ANALYSIS AND RESULTS

In this study, ANN with 5-fold cross-validation approach has been employed to compare the performance of the developed models using the rs-fMRI data of the selected brain regions. After the bifurcation of the data in three samples, the ANN was applied by following the steps given in Figure 2. The cross-validation classification accuracy of all the models for training and validation sample, for every fold and the average accuracy of all 5-folds are given in Table 2. Only the average results of the 5-folds cross-validation have been used for interpretation and comparison purpose in the next text. It is clear from the average results in Table 2 that the ANN<sub>BH<sub>s</sub></sub> provided the best accuracy, while ANN<sub>RH</sub> gives the lowest accuracy percentage, and the accuracy results of ANN<sub>LH</sub> are very close to the ANN<sub>BH<sub>s</sub></sub>.

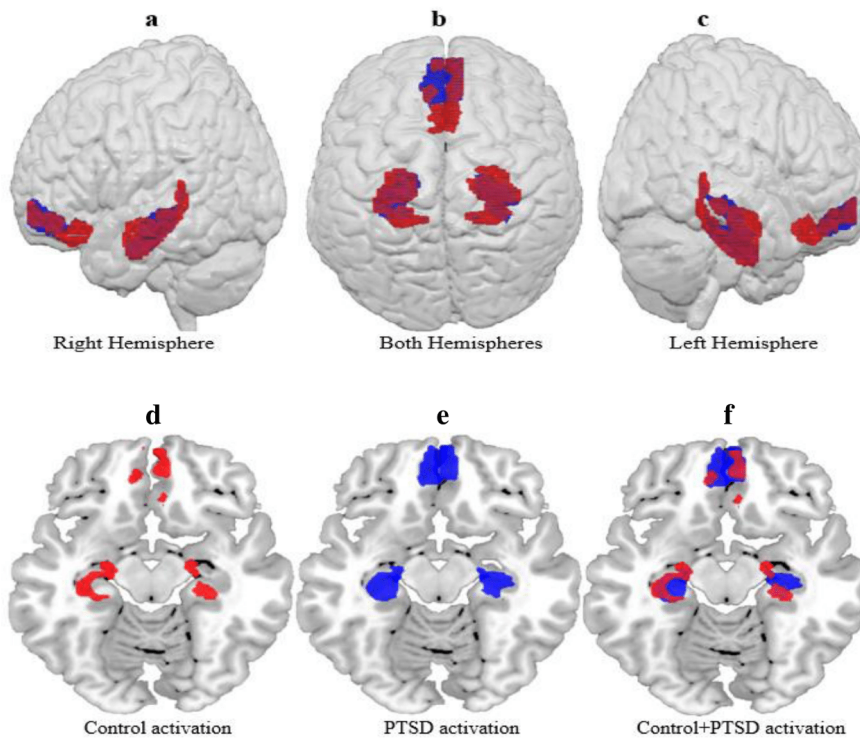
Graphically, the detailed classification results are presented in Figure 5. As the final selected ANN models efficiently classifying the PTSD individuals and healthy controls by taking rs-fMRI data of the activations in brain regions as input and produce results of the classification as output. In Figure 5, the correctly classified the numbers and percent-

ages of the scans of the region-of-interest have been appeared as the diagonal values and opposite (incorrect) classified scans are the off-diagonal values for both the training and validation samples. The overall accuracy with the regions in the right, left, and both hemispheres of the training and validation model of ANN is also shown in Figure 5. The accuracy of ANN<sub>RH</sub> with the training and validation sample was 78.0% and 80%, in this way, ANN<sub>RH</sub> predicted seventy-eight and eighty correct decisions out of 100, respectively. The total accuracy of ANN<sub>LH</sub> with the regions in the left hemisphere by the training and validation sample was 94% and 93%, which means that our model predicted ninety-four and ninety-three correct decisions out of 100, respectively. Similarly, the correct predictions by the ANN<sub>BH<sub>s</sub></sub> with the training and validation sample were 95% and 94%, comparatively, this model provided almost the same prediction accuracy as the model with the regions in the left hemisphere and it predicted ninety-four and ninety-five correct decisions out of 100 in training and validation sample.

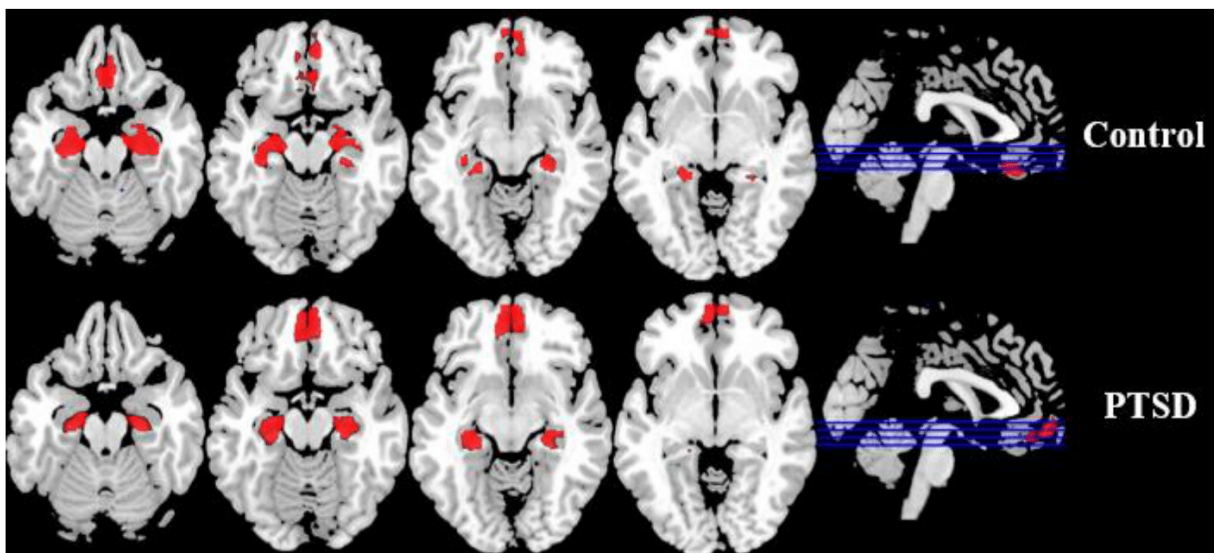
The training and validation loss and accuracy were measured and plotted against the first 30 epochs for ANN<sub>BH<sub>s</sub></sub>, ANN<sub>LH</sub>, and ANN<sub>RH</sub> model in Figure 6 with three plots, respectively. These three exemplary plots depicting the changes in training and validation loss were large initially but over the epochs, the loss decreasing gradually during the first 25 epochs and become stable after around 25 epochs for all ANN models, when the maximum 200 epochs had been executed. The ANN<sub>BH<sub>s</sub></sub> have less loss and greater accuracy as compare to the ANN<sub>LH</sub> and ANN<sub>RH</sub> models, similarly, ANN<sub>LH</sub> have less loss and greater accuracy than ANN<sub>RH</sub>. The loss for training and validation group data decayed after each epoch but ANN<sub>RH</sub> has more and fluctuated loss which means that its parameters of the network did not converges to better ones model this is also reflected from the accuracy curve. The final classification accuracy on the training and validation group data were obtained as mentioned above. The best models which achieved the highest accuracy and minimum loss on the training and validation group data were reserved for testing group data.

### A. HOSMER-LEMESHOW TEST

It is better to evaluate the model fitness as far as possible before rely upon it to draw a conclusion or prediction. In this regard, the popular the Hosmer-Lemeshow test for binary outcomes was considered. Hosmer-Lemeshow test suggests the goodness-of-fit of the model using the observed and predicted values and it depends on the chi-square goodness-of-fit test. The insignificance of the test indicates that the model is good-fitted [47]. The results of Hosmer-Lemeshow test in Table 3 indicate the ANN<sub>RH</sub>, ANN<sub>LH</sub>, and ANN<sub>BH<sub>s</sub></sub> are well-fitted models to the data as all the p-values are very close to one. Therefore, these ANN models can predict PTSD and Control subjects accurately. Comparatively, ANN<sub>LH</sub> and ANN<sub>BH<sub>s</sub></sub> are the better choices for the prediction and classification.



**FIGURE 3.** Subfigure 3a, 3b, and 3c are showing the activation in the right, both and left hemispheres, respectively. Subfigure 3d, 3e, and 3f are indicating the activation of the healthy control, PTSD individual and both, respectively, in the regions-of-interest (amygdala, hippocampus, and medial prefrontal cortex) in axial view; whereas the activation with blue color for the PTSD individuals, red color for healthy control and pink color for both individuals.



**FIGURE 4.** Red color shows the activation of the brain regions (amygdala, hippocampus, and medial prefrontal cortex) in a multi-slice view of PTSD individual and healthy control.



TABLE 2. The classification accuracy in percentage of 5-fold cross-validation for training and validation sample

Model	Sample	Accuracy (%)					Average
		1-fold	2-fold	3-fold	4-fold	5-fold	
ANN <sub>RH</sub>	Training	0.776	0.764	0.792	0.803	0.771	78.12
	Validation	0.75	0.714	0.786	0.788	0.964	80.04
ANN <sub>LH</sub>	Training	0.941	0.965	0.954	0.912	0.935	94.14
	Validation	0.926	0.923	0.934	0.941	0.927	93.02
ANN <sub>BHs</sub>	Training	0.952	0.967	0.952	0.949	0.929	94.98
	Validation	0.917	0.915	0.964	0.939	0.971	94.12

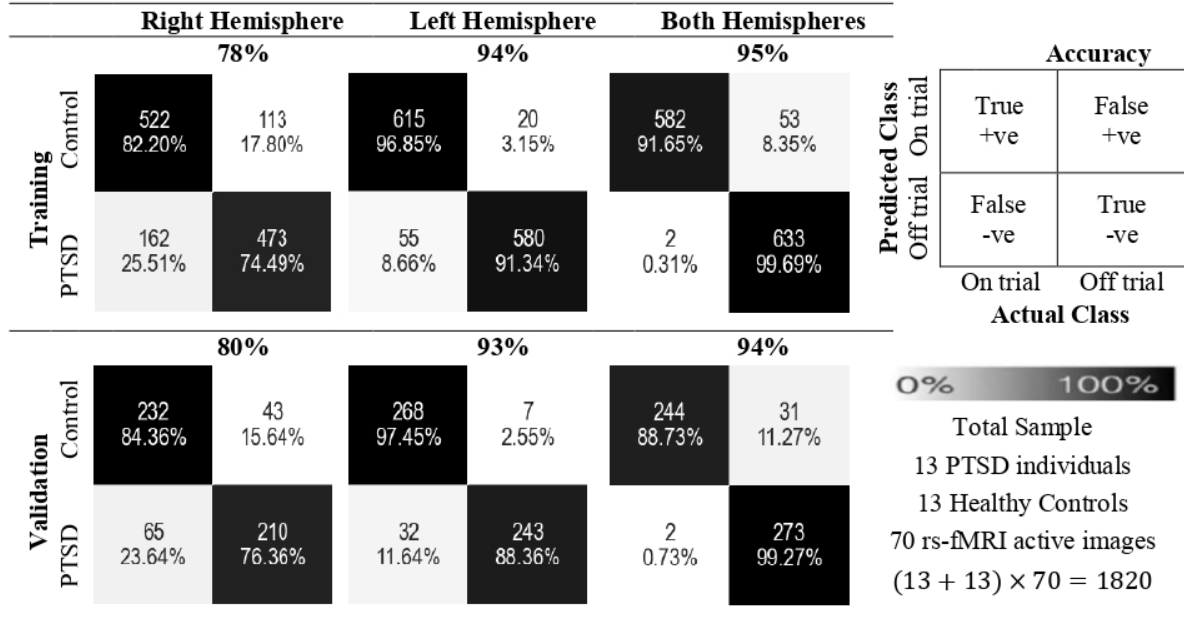


FIGURE 5. ANN classification accuracy for both training and validation sample settled during the classification of the PTSD and healthy control by the rs-fMRI scans of the brain regions in right, left, and both hemispheres. In each 2×2 confusion matrix, the diagonal values indicate the right decision and off-diagonal indicates wrong decisions of predictions for both the training and validation samples. The darkness of the cells of the confusion matrix increases as classification accuracy increases.

TABLE 3. Hosmer-Lemeshow test results for the three models

Model	Chi-square	df	Sig.
ANN <sub>RH</sub>	2.6538	8	0.9542
ANN <sub>LH</sub>	1.2395	8	0.9962
ANN <sub>BHs</sub>	0.3596	8	1.0000

### B. CALIBRATION PLOT

The performance of the proposed ANN model can further be quantified in terms of calibration plots. Calibration indicates the contract between observed outcomes and predicted probabilities and assess graphically how accurate the models predict [48]–[49]. In the case of ideal calibration, predictions appear exactly on the diagonal line with the zero value of intercept and the value of the slope close to 1.22 along with the p-value less than 0.05 for the statistical significance. The calibration plots for the ANN<sub>RH</sub>, ANN<sub>LH</sub> and ANN<sub>BHs</sub> models were plotted as given in Figure 7. The diagonal line refers to the perfect calibration and it is used to compare our calibrated ANN<sub>RH</sub>, ANN<sub>LH</sub>, and ANN<sub>BHs</sub> models with dotted lines. The lines of ANN<sub>RH</sub>, ANN<sub>LH</sub>,

and ANN<sub>BHs</sub> models are close to the diagonal line. The calibration intercept for the ANN<sub>RH</sub> model is 0.10 (p-value 0.012) and the calibration slope is 0.81 (p-value 0.000). The ANN<sub>LH</sub> have -0.08 (p-value 0.026) value of intercept and slope is the 1.16 (p-value 0.000). The calibration intercept and slope of the ANN<sub>BHs</sub> model is -0.07 (p-value 0.014) and 1.13 (p-value 0.000), respectively. The calibration curve of ANN<sub>RH</sub> model deviates more from the ideal calibration line than ANN<sub>LH</sub> and ANN<sub>BHs</sub> models. As the calibration curve of the ANN<sub>LH</sub> and ANN<sub>BHs</sub> models are approximately close to the perfectly calibrated line. Therefore, the intercepts and slopes are statistically significant and very close to the benchmark values.

### C. SENSITIVITY ANALYSIS

To assess more about the accuracy of the ANN models for the classification of PTSD and healthy control, we have calculated sensitivity, specificity, false-positive-rate, false-negatives-rate, and area under the ROC curve with confidence intervals. Here, sensitivity is the ability to correctly identify the PTSD individual when the individual has truly PTSD

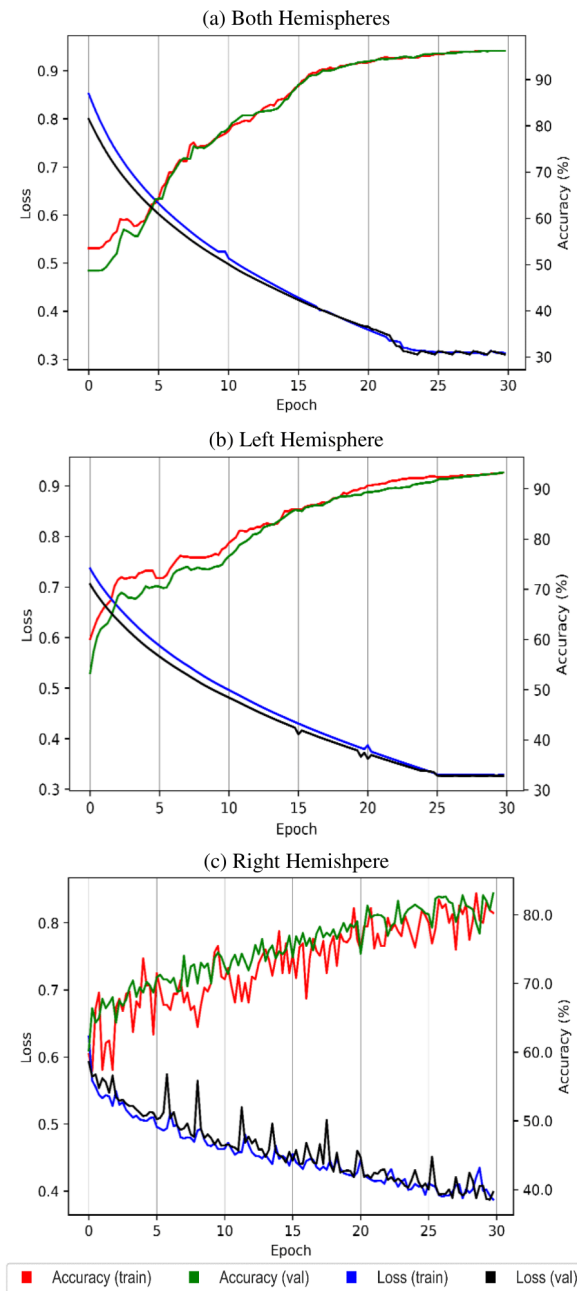


FIGURE 6. Training and validation loss and accuracy curves over epochs for ANN<sub>BHs</sub>, ANN<sub>LH</sub>, and ANN<sub>RH</sub>.

and specificity is the ability to correctly identify the healthy control individual when the individual truly healthy. The false-positive-rate is the probability that an individual is a healthy control and the model declares it PTSD individual. The false-negative-rate is the probability that an individual has PTSD and the model identifies it as healthy control. These measures are computed for training and validation sample sets separately as reported in Table 4 and overall the results are also obtained for ANN<sub>RH</sub>, ANN<sub>LH</sub>, and ANN<sub>BHs</sub> models. Comparatively, the ability of sensitivity of ANN<sub>LH</sub> model is the highest as 96.94%. It can correctly

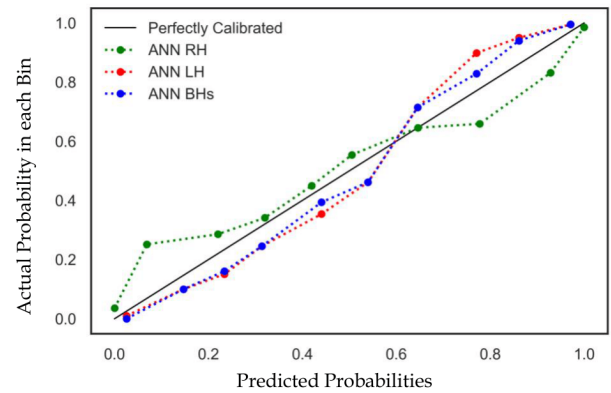


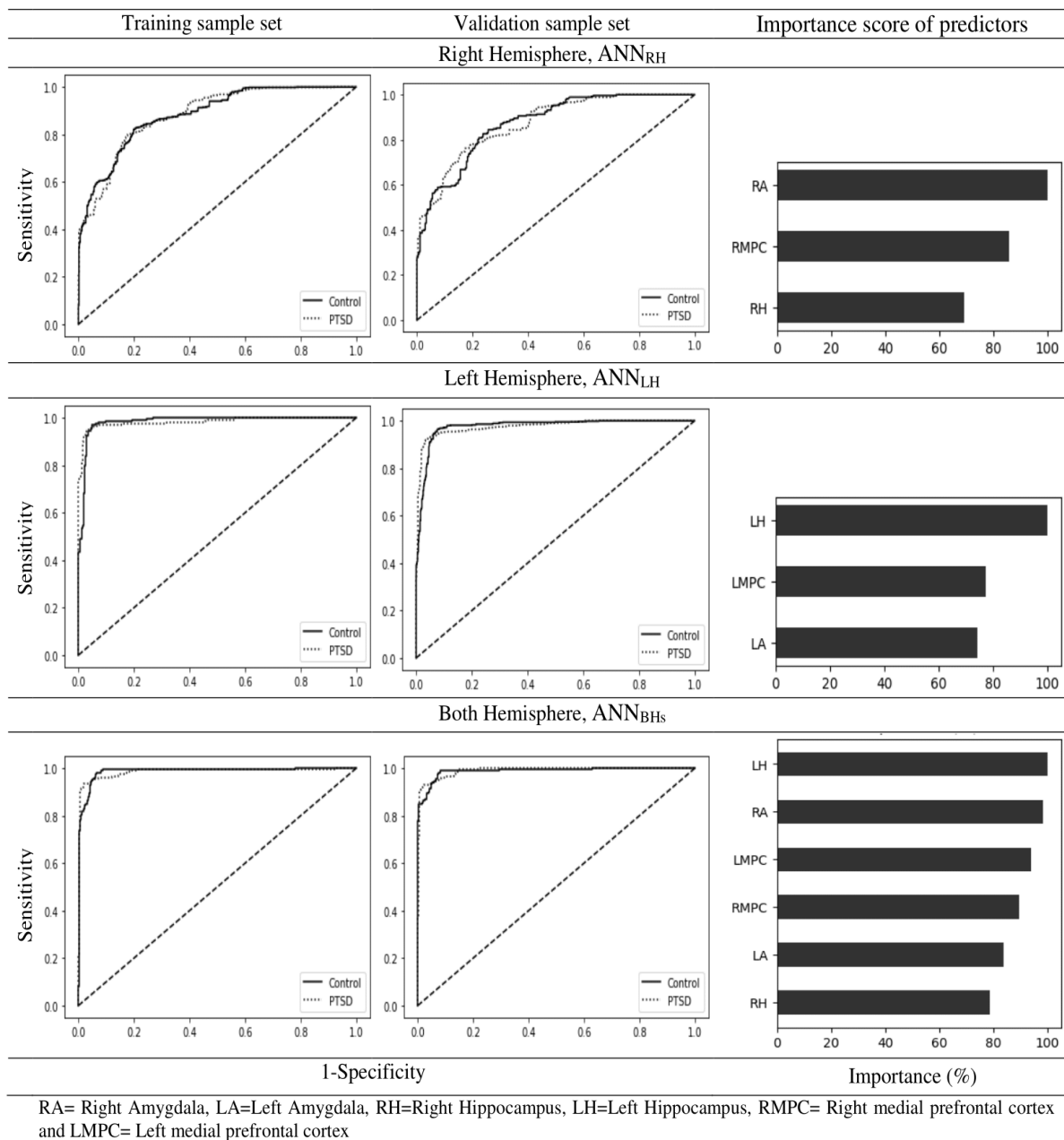
FIGURE 7. Calibration plot of the ANN models

identify 96.94% of the individual who possesses PTSD. The ANN<sub>BHs</sub> model has top specificity and able to correctly identify 98.42% of individual those are healthy control. The least false-positive-rate and false-negative-rate possess by the ANN<sub>LH</sub> and ANN<sub>BHs</sub>, respectively, the least value of these two measures are most demanding. Since concerning the sensitivity and false-positive-rate, and whereas specificity and false-negative-rate the ANN<sub>LH</sub> and ANN<sub>BHs</sub> are useful and valid, respectively.

#### D. ROC CURVE ANALYSIS

To observe the precision of the ANN models and to display the discriminatory ability to correctly pick up PTSD and healthy controls the ROC curve analysis was performed. ROC curve is also used to provide a high degree of specificity, sensitivity, and high test-retest stability [50]. The area under the ROC curve is an effective measure to diagnose the classification accuracy. According to DeSalvo et al. [51], ROC curve values between 0.70 and 0.80 are acceptable, ones greater than 0.80 are excellent, and ones higher than 0.90 are rarely observed. The ROC curves of the ANN models based on the regions of the right hemisphere, left hemisphere and both hemispheres are presented in Figure 8. The two lines in each the ROC curve denoted the two different classes; wherein the solid line represents the PTSD individuals and the dotted line for the healthy controls. In the training and validation sample set, the area under the ROC curves for ANN<sub>RH</sub> model are obtained 0.871 and 0.883; for ANN<sub>LH</sub> model 0.977 and 0.984; and for ANN<sub>BHs</sub> model 0.984 and 0.984, respectively. Overall, the area under the ROC curve for the ANN<sub>RH</sub>, ANN<sub>LH</sub>, and ANN<sub>BHs</sub> is 0.877, 0.980, and 0.984, respectively, as reported in Table 4 The comparison shows regions in the left hemisphere can clearly distinguish between PTSD individual and healthy control and even the scanning of the left hemisphere is enough to diagnose PTSD in a person. Overall, the area under the ROC (AUROC) curve of ANN<sub>LH</sub> and ANN<sub>BHs</sub> is very close and high.

The dominance level of each region in classification is also presented graphically in Figure 8, corresponding to the ROC curves with their respective model. In the ANN<sub>RH</sub> the most



**FIGURE 8.** ROC curves representing sensitivity analysis of ANN models and the bar display the dominance level (in %) of affected regions in the classification of PTSD and healthy control.

important region is the right amygdala and the least important is the right hippocampus in the classification. The ANN<sub>LH</sub> model that is based on the regions in the left hemisphere highlighted the left hippocampus as the most important and left amygdala as the least important. The third model ANN<sub>BHs</sub> was performed with all considered six regions then the left hippocampus is the region that has the most dominant role in classification and the least is the right hippocampus. The importance of each region in classification is attained by the normalized importance graph of ANN, more the importance of a region means that the region contributes much to identify

the PTSD patient.

### E. COMPUTATIONAL TIME

The computational time of our developed ANN models was measured in Python language with “time” package using personal computer which had specifications of Intel(R) Core(TM) i5-4300M CPU @ 2.60GHz 2.60 GHz with 8 GB RAM. The computational time which was consumed in development of the ANN<sub>LH</sub>, ANN<sub>RH</sub> and ANN<sub>BHs</sub> models with 30 epochs were 2.91, 1.88 and 2.56 seconds, respectively.

**TABLE 4.** Sensitivity, Specificity, false-positive rate (FPR), false-negative rate (FNR) and AUROC with 95% confidence Interval

ANN Model	Sample Set	Specificity (%)	Sensitivity (%)	FPR (%)	FNR (%)	AUROC (95% CI)
ANN <sub>RH</sub>	Training	79.45	77.31	20.55	22.69	0.871(0.858-0.895)
	Validation	83.00	78.11	17.00	21.89	0.883(0.878-0.903)
	Overall	81.22	77.71	18.77	22.29	0.877(0.868-0.899)
ANN <sub>LH</sub>	Training	96.67	91.79	3.333	8.21	0.977(0.970-0.981)
	Validation	97.20	89.33	2.800	10.67	0.984(0.980-0.991)
	Overall	96.94	89.33	3.07	9.44	0.980(0.975-0.986)
ANN <sub>BHs</sub>	Training	92.27	99.66	7.726	0.34	0.984(0.980-0.994)
	Validation	89.80	99.19	10.20	0.81	0.984(0.980-0.993)
	Overall	91.03	99.42	8.963	0.575	0.984(0.980-0.994)

## VI. ANN CLASSIFICATION PERFORMANCE ON THE HOLDOUT SAMPLE

The classification performance efficiency was also tested by applying the trained and validated model on the independent holdout sample. In the holdout sample, the already recruited rs-fMRI 70 scans of a PTSD individual and 70 scans of healthy control were obtained for the experimentation to get the trust of the practitioners on the results of this study. The actual number of scans of the activated voxels of PTSD individuals in the holdout sample was 70, however, 60, 67, and 69 scans were correctly classified by ANN<sub>RH</sub>, ANN<sub>LH</sub>, and ANN<sub>BHs</sub> model, respectively. And the actual number of scans of the activated voxels of healthy control in the holdout sample was also 70, however, 57, 66, and 67 scans were correctly classified by ANN<sub>RH</sub>, ANN<sub>LH</sub>, and ANN<sub>BHs</sub> model, respectively. The prediction accuracy of the developed ANN<sub>RH</sub>, ANN<sub>LH</sub> and ANN<sub>BHs</sub> model using holdout sample was achieved 83.57%, 95%, and 97.14%, respectively. The overall and individual classification accuracy of the PTSD or healthy control for all models presented in Figure 9 using the holdout sample. Comparatively, the prediction accuracy on the holdout sample increased and more accurately predicted PTSD individual and healthy control for all the models. The performance of the proposed approach validates that the rs-fMRI scans of selected brain regions have the potential to identify persons with PTSD.

## VII. DISCUSSION

The practitioners required an easy and reliable method for diagnosing PTSD in an individual with full of confidence, and this study tried and achieved the desired results. As the numerous fMRI studies only studied and observed the intensity of changes in the brain of PTSD rather than focused on the classification of PTSD and healthy control. It is also observed, the neuroimaging studies investigated changing activities in only one or more than one region among left hippocampus, right hippocampus, left amygdala, right amygdala, left medial prefrontal cortex and right medial prefrontal cortex. In our study, all these six susceptible regions of the brain were considered while analyzing rs-fMRI scans to classify the PTSD individual from a healthy control. After extracting the data of the affected brain regions by SPM12 software, the ANN used for classification and prediction of the person with or without the disorder, and the

identification of the regions which played the most dominant role in classifying the PTSD patient and healthy control. As the biological neural networks formation based ANN has become an efficient problem solver in medical science and extensively used for classification and prediction of medical diseases [52].

The ANN has applied separately on left, right, and both hemispheres, using the data of regions of interest as independent variables. The findings of ANN<sub>LH</sub> that is based on three regions in the left hemisphere efficiently able to diagnose the PTSD patient as compared to the model ANN<sub>RH</sub> with the rs-fMRI data of the three regions in the right hemisphere. As the results of the ANN<sub>LH</sub> model showed more classification accuracy that the ANN<sub>RH</sub>. The involvement of left hemisphere in PTSD is also justified by Baldacara et al. [53]. In left-hemisphere, 2.25-fold more increased abnormalities were found than right-hemisphere in PTSD by Ito et al. [54]. Durkee et al. [55] also suggesting right-hemisphere dysfunction is less than the left-hemisphere in PTSD. If only concentrate on the regions of right hemisphere, then the normalized importance graph of ANN indicated that the right amygdala is the most dominant region in classification. The most dominant region means that the region affected much due to PTSD and contributes significantly to identify the PTSD patient. It is also observed that the right medial prefrontal cortex less and the right hippocampus is the least affected region. Similarly, the normalized importance graph of ANN for left hemisphere indicated that the most prominently involved region is the left hippocampus and the least affected region is the left amygdala in the brain of PTSD patients.

The results of the third ANN model based on the six regions have the highest accuracy (94.5%) and the normalized importance graph demonstrated that the left hippocampus is the most affected region in PTSD patients. The second most affected region is the right amygdala. Respectively, the left medial prefrontal cortex, right medial prefrontal cortex, and left amygdala has decreasing effective strength. The least affected region among the affected regions is the right hippocampus. Therefore, left hippocampus is a core region that affected much in PTSD, as it is also concluded in the case-control fMRI study of Thomaes et al. [56], and also justified in the meta-analysis of 37 studies by Nelson and Tumpap [57]. The right hippocampus is the least affected

		Right Hemisphere		Left Hemisphere		Both Hemispheres		Legend	
		83.6%		95.0%		97.2%		Accuracy	
		Control	PTSD	Control	PTSD	Control	PTSD	Control	PTSD
Control	Control	57 81.43%	13 18.57%	66 94.29%	4 5.71%	67 95.71%	3 4.29%	True +ve	False +ve
	PTSD	10 14.29%	60 85.71%	3 4.29%	67 95.71%	1 1.43%	69 98.57%	False -ve	True -ve
		0%		100%		Total Sample			
						One PTSD Subject			
						One Healthy Control			
						70 rs-fMRI scans of each			

FIGURE 9. Classification matrix with accuracy in holdout sample using validated models sing affected brain regions

region in PTSD individuals, it is also discussed by Nelson and Tumpap [57].

Finally, in our approach, we have used brain regions as independent variables in ANN and the target variable was to identify the individual with or without PTSD. According to the sensitivity, specificity, false-positive-rate, false-negatives-rate, area under the ROC curves and accuracy percentages the finalized ANN models justified and achieved the objective of the study. The ANN was also used to identify of regions that played the most dominant role while classification between PTSD individual and healthy control. Additionally, this approach found out the affected regions in the brain with their strength of being infected. Ultimately, our findings are helpful for neurobiologists, neurologists, and psychiatrists for the diagnostic and treatment of PTSD individuals, even doctors can do the therapy of the affected regions by knowing the strength of infected regions.

In summary, this study is an important step toward the clinical diagnosis of PTSD with the help of ANN. However, this study does have some limitations. First, as the data of our study was related to only army personals and the general public with trauma is not the part, we urge caution when generalizing these results to other traumatic events, this study can be extended and conduct the research on the particular traumatic event fMRI data. Second, we used resting-state fMRI data to extract classification features, it may be possible to explore the results on activity-based fMRI data. Third, our study took the recommended affected brain regions in PTSD, and in the future, more regions can take which may improve the classification accuracy. Fourth, the present study is appropriate for the small and moderate sample sizes and it is need to test this methodology for very large sample size to generalize the results for every sample size. At last, our research only compared PTSD with healthy controls, other related psychiatric disorders are not considered, and it is possible to take the data of different psychiatric disorders at once to diagnose PTSD.

### VIII. CONCLUSION

In this case-control rs-fMRI study the ANN training-validation-testing approach was applied by taking six most susceptible brain regions to classify and predict the PTSD

individual and to identify the dominance level of each affected brain region in the development of PTSD. As it is important to accurately diagnose PTSD individuals for the most relevant treatment in this complex stress-related psychiatric disorder. In this regard, ANN is a simple and efficient way of identification and classification. Consequently, the findings of the ANN significantly identify the affected regions and classify PTSD from healthy control with 79%, 93.5%, and 94.5%, using the regions in the right hemisphere, left hemisphere, and both hemispheres, respectively. Furthermore, the most affected region of the brain in PTSD is the left hippocampus and the least involved region is the right hippocampus, particularly, these results are consistent with many fMRI studies. The performance validation results clearly validated the appropriateness of the ANN model and selected brain regions. Our all findings will helpful for classifying the PTSD individual from healthy control with confidence and identify the affected region for most relevant intervention and treatment, such as psychotherapy or pharmacological interventions aiming to get the normal activation of the disturbed regions.

### REFERENCES

- [1] O. B. Yonis, Y. Khader, A. Jarboua, M. M. Al-bsoul, N. Al-akour, M. A. Alfaqih, M. M. Khatatbeh, and B. Amarnah, "Post-traumatic stress disorder among Syrian adolescent refugees in Jordan," *J. Public Health (Bangkok)*, vol. 42, no. 2, pp. 319–324, May. 2020.
- [2] G. C. Davis, N. Breslau, "Post-traumatic stress disorder in victims of civilian trauma and criminal violence," *Psychiatr. Clin.*, vol. 17, no. 2, pp. 289–299, Jun. 1994.
- [3] H. Kienzler, "Debating war-trauma and post-traumatic stress disorder (PTSD) in an interdisciplinary arena," *Soc. Sci. Med.*, vol. 67, no. 2, pp. 218–227, Jul. 2008.
- [4] J. A. Cohen, "Practice Parameter for the Assessment and Treatment of Children and Adolescents With Posttraumatic Stress Disorder," *J. Am. Acad. Child Adolesc. Psychiatry*, vol. 49, no. 4, pp. 414–430, Apr. 2010.
- [5] Lemogne and Cédric, "Post-traumatic stress disorder and comorbid physical conditions," *J. Psychosom. Res.*, vol. 126, pp. 109818, Nov. 2019.
- [6] J. A. Sumner, L. D. Kubzansky, A. L. Roberts, Q. Chen, E. B. Rimm and K. C. Koenen, "Not all posttraumatic stress disorder symptoms are equal: fear, dysphoria, and risk of developing hypertension in trauma-exposed women," *Psychol. Med.*, vol. 50, no. 1, pp. 38–47, 2020.
- [7] R. C. Kessler, P. Berglund, O. Demler, R. Jin, K. R. Merikangas and E. E. Walters, "Lifetime prevalence and age-of-onset distributions of DSM-IV disorders in the National Comorbidity Survey Replication," *Arch. Gen. Psychiatry*, vol. 62, no. 6, pp. 593–602, Jun. 2005.
- [8] D. J. Snipes, J. M. Calton, B. A. Green, P. B. Perrin and E. G. Benetsch, "Rape and Posttraumatic Stress Disorder (PTSD): Examining the Mediating

- Role of Explicit Sex–Power Beliefs for Men Versus Women,” *J. Interpers. Violence* ., vol. 32, no. 16, pp. 2453–2470, Aug. 2017.
- [9] A. M. Thabet, S. S. Thabet and P. Vostanis, “The relationship between Trauma due to war, post traumatic stress disorder and fear,” *EC Paediatr* ., vol. 7, pp. 171–178, 2018.
- [10] M. G. Pereira, J. C. Machado, M. Pereira, C. Lopes and S. Pedras, “Quality of life in elderly Portuguese war veterans with post-traumatic stress symptoms,” *Patient Relat. Outcome Meas.* ., vol. 10, pp. 49–58, 2019.
- [11] T. L. Hafemeister and N. A. Stockey, “Last stand -The criminal responsibility of war veterans returning from Iraq and Afghanistan with posttraumatic stress disorder,” *Ind. L. J.* ., vol. 85, pp. 88–141, 2010.
- [12] J. Iribarren, P. Prolo, N. Neagos and F. Chiappelli, “Post-traumatic stress disorder: Evidence-based research for the third millennium,” *Evidence-Based Complement. Altern. Med.* ., vol. 2, pp. 503–512, Dec. 2005.
- [13] Q. Wang, L. Ren, W. Wang, W. Xu and Y. Wang, “The relationship between post-traumatic stress disorder and suicidal ideation among shidu parents: the role of stigma and social support,” *BMC psychiatry*, vol. 19, no. 1, pp. 1–9, Dec. 2019.
- [14] R. K. Pitman, A. M. Rasmusson, K. C. Koenen, L. M. Shin, S. P. Orr, M. W. Gilbertson, M. R. Milad and I. Liberzon, “Biological studies of post-traumatic stress disorder,” *Nat. Rev. Neurosci.* ., vol. 13, no. 11, pp. 769–787, Nov. 2012.
- [15] A. Shalev, I. Liberzon and C. Marmar, “Post-traumatic stress disorder,” *N. Engl. J. Med.* ., vol. 376, no. 25, pp. 2459–2469, Jun. 2017.
- [16] L. Helpman, M. F. Marin, S. Papini, X. Zhu, G. M. Sullivan, F. Schneier, M. Neria, E. Shvil, M. J. Malaga Aragon, J. C. Markowitz, M. A. Lindquist, T. Wager, M. Milad and Y. Neria, “Neural changes in extinction recall following prolonged exposure treatment for PTSD: A longitudinal fMRI study,” *NeuroImage Clin.* ., vol. 12, pp. 715–723, Feb. 2016.
- [17] M. Boccia, S. D’Amico, F. Bianchini, A. Marano, A. M. Giannini and L. Piccardi, “Different neural modifications underpin PTSD after different traumatic events: an fMRI meta-analytic study,” *Brain Imaging Behav.* ., vol. 10, no. 1, pp. 226–237, Mar. 2016.
- [18] A.Y. Shalev, Y. Anki, Y. Israeli-Shalev, T. Peleg, R. Adesky and S. Freedman, “Prevention of posttraumatic stress disorder by early treatment: results from the Jerusalem Trauma Outreach And Prevention study,” *Arch. Gen. Psychiatry* ., vol. 69, no. 2, pp. 166–176, Feb. 2012.
- [19] Q. Parsad, A. Chaichi, D. P. Kelley, J. Francis and M. R. Gartia, “Current and future functional imaging techniques for post-traumatic stress disorder,” *RSC advances*, vol. 9, no. 42, pp. 24568–24594, 2019.
- [20] L. D. Selemon, K. A. Young, D. A. Cruz and D. E. Williamson, “Frontal lobe circuitry in posttraumatic stress disorder,” *Chronic Stress*, vol. 3, pp. 1–17, May. 2019.
- [21] J. D. Bremner, “Imaging in CNS disease states: PTSD,” in *Imaging in CNS Drug Discovery and Development: Implications for Disease and Therapy*. New York, USA: Springer, 2010, pp. 339–360.
- [22] D.T. Acheson, J. E. Gresack and V. B. Risbrough, “Hippocampal dysfunction effects on context memory: possible etiology for posttraumatic stress disorder,” *Neuropharmacology* ., vol. 62, no. 2, pp. 674–685, Feb. 2012.
- [23] R. Admon, D. Leykin, G. Lubin, V. Engert, J. Andrews, J. Pruessner and T. Hendler, “Stress-induced reduction in hippocampal volume and connectivity with the ventromedial prefrontal cortex are related to maladaptive responses to stressful military service,” *Hum. Brain Mapp.* ., vol. 34, no. 11, pp. 2808–2816, Nov. 2013.
- [24] E. Levy-Gigiab, C. Szabó, O. Kelemen and S. Kéri, “Association among clinical response, hippocampal volume, and FKBP5 gene expression in individuals with posttraumatic stress disorder receiving cognitive behavioral therapy,” *Biol. Psychiatry* ., vol. 74, no. 11, pp. 793–800, Dec. 2013.
- [25] A. Karl, M. Schaefer, L. S. Malta, D. Dörfel, N. Rohleder and A. Werner, “A meta-analysis of structural brain abnormalities in PTSD,” *Neurosci. Biobehav. Rev.* ., vol. 30, no. 10, pp. 1004–1031, Jan. 2006.
- [26] T. Kataoka, M. Fuchikami, S. Nojima, N. Nagashima, M. Araki, J. Omura and S. Morinobu, “Combined brain-derived neurotrophic factor with extinction training alleviate impaired fear extinction in an animal model of post-traumatic stress disorder,” *Genes, Brain and Behavior*, vol. 18, no. 7, pp. e12520, Sep. 2019.
- [27] K. D. Young, V. Zotev, R. Philips, M. Misaki, W. C. Drevets and J. Bodurka, “Amygdala real-time functional magnetic resonance imaging neurofeedback for major depressive disorder: A review,” *Psychiatry and clinical neurosciences*, vol. 72, no. 7, pp. 466–481, Jul. 2018.
- [28] R. A. Morey, E. K. Clarke, C. C. Haswell, R. D. Phillips, A. N. Clausen, M. S. Mufford, Z. Saygin, M. Brancu, J. C. Beckham, P. S. Calhoun, E. Dedert, E. B. Elbogen, J. A. Fairbank, R. A. Hurley, J. D. Kiltz, N. A. Kimbrel, A. Kirby, C. E. Marx, S. D. McDonald, S. D. Moore, J. C. Naylor, J. Rowland, C. Swinkels, S. T. Szabo, K. H. Taber, L. A. Tupler, E. E. van Voorhees, R. E. Yoash-Gantz, H. R. Wagner and K. S. LaBar, “Amygdala Nuclei Volume and Shape in Military Veterans With Posttraumatic Stress Disorder,” *Biol. Psychiatry Cogn. Neurosci. Neuroimaging* ., vol. 5, no. 3, pp. 281–290, Mar. 2020.
- [29] A. A. Nicholson, D. Rabellino, M. Densmore, P. A. Frewen, C. Paret, R. Kluitsch, C. Schmahl, J. Théberge, R. W. J. Neufeld, M. C. McKinnon, J. Reiss, R. Jetly and R. A. Lanius, “The neurobiology of emotion regulation in posttraumatic stress disorder: Amygdala downregulation via real-time fMRI neurofeedback,” *Hum. Brain Mapp.* ., vol. 38, no. 1, pp. 541–560, Jan. 2017.
- [30] Y. J. Kim, S. J. Van Rooij, T. D. Ely, N. Fani, K. J. Ressler, T. Jovanovic and J. S. Stevens, “Association between posttraumatic stress disorder severity and amygdala habituation to fearful stimuli,” *Depression and anxiety*, vol. 36, no. 7, pp. 647–658, Jul. 2019.
- [31] K. A. Norman, S. M. Polyn, G. J. Detre and J. V. Haxby, “Beyond mind-reading: multi-voxel pattern analysis of fMRI data,” *Trends Cogn. Sci.* ., vol. 10, no. 9, pp. 424–430, Sep. 2006.
- [32] P. Zhutovsky, R. Thomas, T. Varkevisser, M. Olf, S. J. H. van Rooij, M. Kennis, G. van Wingen and E. Geuze, “Predicting Trauma-Focused Therapy Outcome From Resting-State Functional Magnetic Resonance Imaging in Veterans With Posttraumatic Stress Disorder,” *Biol. Psychiatry* ., vol. 83, no. 9, pp. S357, May. 2018.
- [33] A. S. Heinsfeld, A. R. Franco, R. C. Craddock, A. Buchweitz and F. Meneguzzi, “Identification of autism spectrum disorder using deep learning and the ABIDE dataset,” *NeuroImage Clin.* ., vol. 17, pp. 16–23, Jan. 2018.
- [34] G. Ciaburro and B. Venkateswaran, “Neural Networks with R: Smart models using CNN, RNN, deep learning, and artificial intelligence principles,” *Packt Publishing Ltd.* ., Sep. 2017.
- [35] P. Anagnostopoulou, V. Alexandropoulou, G. Lorentzou, A. Lykothanasi, P. Ntaountaki and A. Drigas, “Artificial intelligence in autism assessment,” *Int. J. Emerg. Technol. Learn.* ., vol. 15, no. 6, pp. 95–107, Mar. 2020.
- [36] L. He, H. Li, S. K. Holland, W. Yuan, M. Altaye, N. A. Parikh, “Early prediction of cognitive deficits in very preterm infants using functional connectome data in an artificial neural network framework,” *NeuroImage Clin.* ., vol. 18, pp. 290–297, Jan. 2018.
- [37] M. Thomas and A. Chandran, “Artificial Neural Network for Diagnosing Autism Spectrum Disorder,” *Proc. 2nd Int. Conf. Trends Electron. Informatics, ICOEI* ., pp. 930–933, May. 2018.
- [38] F. Ahmad, I. Ahmad and W. M. Dar, “Identification and classification of voxels of human brain for reward-related decision making using ANN technique,” *Neural Comput. Appl.* ., vol. 28, no. 1, pp. 1035–1041, Dec. 2017.
- [39] P. Christova, L. M. James, B.E. Engdahl, S.M. Lewis and A. P. Georgopoulos, “Diagnosis of posttraumatic stress disorder (PTSD) based on correlations of prewhitened fMRI data: outcomes and areas involved,” *Exp. Brain Res.* ., vol. 233, no. 9, pp. 2695–2705, Sep. 2015.
- [40] M. Yuan, C. Qiu, Y. Meng, Z. Ren, C. Yuan, Y. Li, M. Gao, S. Lui, H. Zhu, Q. Gong and W. Zhang, “Pre-treatment resting-state functional MR imaging predicts the long-term clinical outcome after short-term paroxetine treatment in post-traumatic stress disorder,” *Front. psychiatry* ., vol. 9, pp. 532, Oct. 2018.
- [41] D. Banerjee, K. Islam, K. Xue, G. Mei, L. Xiao, G. Zhang, R. Xu, C. Lei, S. Ji and J. Li, “A deep transfer learning approach for improved post-traumatic stress disorder diagnosis,” *Knowledge and Information Systems* ., vol. 60, no. 3, pp. 1693–1724, Sep. 2019.
- [42] Y. W. Kim, S. Kim, M. Shim, M. J. Jin, H. Jeon, S. H. Lee and C. H. Im, “Riemannian classifier enhances the accuracy of machine-learning-based diagnosis of PTSD using resting EEG,” *Prog. Neuro-Psychopharmacol. Biol. Psychiatry* ., vol. 102, pp. 109960, Aug. 2020.
- [43] H. Zhu, M. Yuan, C. Qiu, Z. Ren, Y. Li, J. Wang, X. Huang, S. Lui, Q. Gong, W. Zhang and Y. Zhang, “Multivariate classification of earthquake survivors with post-traumatic stress disorder based on large-scale brain networks,” *Acta Psychiatr. Scand.* ., vol. 141, no. 3, pp. 285–298, Mar. 2020.
- [44] A. E. Hramov, N. S. Frolov, V. A. Maksimenko, V. V. Makarov, A. A. Koronovskii, J. Garcia-Prieto, L. F. Antón-Toro, F. Maestú and A. N. Pisarchik, “Artificial neural network detects human uncertainty,” *Chaos An Interdiscip. J. Nonlinear Sci.* ., vol. 28, no. 3, pp. 033607, Mar. 2018.
- [45] D. M. Hawkins, “The Problem of Overfitting,” *J. Chem. Inf. Comput. Sci.* ., vol. 44, no. 1, pp. 1–12, Jan. 2004.

- [46] Department of Defense (DOD) ADNI [Online]. Available: <https://ida.loni.usc.edu/pages/access/search.jsp>. Accessed on: February 19, 2021.
- [47] T. Ayer, O. Alagoz, J. Chhatwal, J.W. Shavlik, C.E. Kahn Jr, and E.S. Burnside, "Breast cancer risk estimation with artificial neural networks revisited: discrimination and calibration," *Cancer.*, vol. 116, no. 14, pp. 3310–3321, Jul. 2010.
- [48] E.W. Steyerberg, A.J. Vickers, N.R. Cook, T. Gerds, M. Gonen, N. Obuchowski, M.J. Pencina, M.W. Kattan, "Assessing the performance of prediction models: a framework for some traditional and novel measures," *Epidemiology.*, vol. 21, no. 1, pp. 128–138, Jan. 2010.
- [49] Z.H. Tang, J. Liu, F. Zeng, Z. Li, X. Yu, L. Zhou, "Comparison of prediction model for cardiovascular autonomic dysfunction using artificial neural network and logistic regression analysis," *PloS one.*, vol. 8, no. 8, pp. e705710, Aug. 2013.
- [50] M. W. Xu, H. M. Liu, G. Tan, T. Su, C. Q. Xiang, W. Wu, B. Li, Q. Lin, X. W. Xu, Y. L. Min, W. F. Liu, G. P. Gao and Y. Shao, "Altered regional homogeneity in patients with corneal ulcer: A resting-state functional MRI study," *Front. Neurosci.* , vol. 13, pp. 1–8, 2019.
- [51] K. B. DeSalvo, V. S. Fan, M. B. McDonell, S. D. Fihn, "Predicting mortality and healthcare utilization with a single question," *Health Serv. Res.* , vol. 40, no. 4, pp. 1234–1246, Aug. 2005.
- [52] R. Parveen, M. Nabi, F. A. Memon, S. Zaman and M. Ali, "A Review and Survey of Artificial Neural Network in Medical Science," *J. Adv. Res. Comput. Appl.* , vol. 3, no. 1, pp. 7–16, 2016.
- [53] L. Baldaçara, A. P. Jackowski, A. Schoedl, M. Pupo, S.B. Andreoli, M. F. Mello, A. L. T. Lacerda, J. J. Mari and R. A. Bressan, "Reduced cerebellar left hemisphere and vermal volume in adults with PTSD from a community sample," *J. Psychiatr. Res.* , vol. 45, no. 12, pp. 1627–1633, Dec. 2011.
- [54] Y. Ito, M. H. Teicher, C. A. Glod, D. Harper, E. Magnus and H. A. Gelbard, "Increased prevalence of electrophysiological abnormalities in children with psychological, physical, and sexual abuse," *J. Neuropsychiatry Clin. Neurosci.*, vol. 5, pp. 401–408 1993.
- [55] C. A. Durkee, J. E. Sarlls, D. M. Hommer and R. Momenan, "White matter microstructure alterations: a study of alcoholics with and without post-traumatic stress disorder," *PloS one.*, vol. 8, no. 11, pp. e80952, Nov. 2013.
- [56] K. Thomaes, E. Dorrepaal, N. P. J. Draijer, M. B. de Ruitter, B. M. Elzinga, A. J. van Balkom, P. L. M. Smoor, J. Smit and D. J. Veltman, "Increased activation of the left hippocampus region in Complex PTSD during encoding and recognition of emotional words: A pilot study," *Psychiatry Res. - Neuroimaging* ., vol. 171, no. 1, pp. 44–53, Jan. 2009.
- [57] M. D. Nelson and A. M. Tumpap, "Posttraumatic stress disorder symptom severity is associated with left hippocampal volume reduction: A meta-analytic study," *CNS Spectr.* , vol. 22, no. 4, pp. 363–372, Aug. 2017.

• • •