

2020-07-01

Non-linearity in stock–recruitment relationships of Atlantic cod: insights from a multi-mo...

This work was made openly accessible by BU Faculty. Please [share](#) how this access benefits you. Your story matters.

Version	
Citation (published version):	Camilla Sguotti, Saskia A Otto, Xochitl Cormon, Karl M Werner, Ethan Deyle, George Sugihara, Christian Möllmann. 2020. "Non-linearity in stock–recruitment relationships of Atlantic cod: insights from a multi-model approach." ICES Journal of Marine Science, Volume 77, Issue 4, pp. 1492 - 1502. https://doi.org/10.1093/icesjms/fsz113

<https://hdl.handle.net/2144/42935>

Boston University



Contribution to the Themed Section: 'Science in support of a nonlinear non-equilibrium world'

Original Article

Non-linearity in stock–recruitment relationships of Atlantic cod: insights from a multi-model approach

Camilla Sguotti ^{1*}, Saskia A. Otto¹, Xochitl Cormon¹, Karl M. Werner², Ethan Deyle ³, George Sugihara³, and Christian Möllmann¹

¹Institute for Marine Ecosystem and Fisheries Science, Center for Earth System Research and Sustainability (CEN), University of Hamburg, Grosse Elbstrasse 133, 22767 Hamburg, Germany

²Thuenen Institute for Sea Fisheries, Herwigstraße 31, 27572 Bremerhaven, Germany

³Scripps Institution of Oceanography, UC San Diego, 9500 Gilman Drive #0202, La Jolla, CA 92093-0202, USA

*Corresponding author: tel: +49 40 42838 6648; fax: +49 40 42838 6618; e-mail: camilla.sguotti@uni-hamburg.de.

Sguotti, C., Otto, S. A., Cormon, X., Werner, K. M., Deyle, E., Sugihara, G., and Möllmann, C. Non-linearity in stock–recruitment relationships of Atlantic cod: insights from a multi-model approach. – ICES Journal of Marine Science, 77: 1492–1502.

Received 12 November 2018; revised 14 March 2019; accepted 17 May 2019; advance access publication 24 June 2019.

The stock–recruitment relationship is the basis of any stock prediction and thus fundamental for fishery management. Traditional parametric stock–recruitment models often poorly fit empirical data, nevertheless they are still the rule in fish stock assessment procedures. We here apply a multi-model approach to predict recruitment of 20 Atlantic cod (*Gadus morhua*) stocks as a function of adult biomass and environmental variables. We compare the traditional *Ricker model* with two non-parametric approaches: (i) the *stochastic cusp model* from catastrophe theory and (ii) *multivariate simplex projections*, based on attractor state-space reconstruction. We show that the performance of each model is contingent on the historical dynamics of individual stocks, and that stocks which experienced abrupt and state-dependent dynamics are best modelled using non-parametric approaches. These dynamics are pervasive in Western stocks highlighting a geographical distinction between cod stocks, which have implications for their recovery potential. Furthermore, the addition of environmental variables always improved the models' predictive power indicating that they should be considered in stock assessment and management routines. Using our multi-model approach, we demonstrate that we should be more flexible when modelling recruitment and tailor our approaches to the dynamical properties of each individual stock.

Keywords: Atlantic cod, empirical dynamic modelling, non-linear dynamics, Ricker model, stochastic cusp model, stock–recruitment models

Introduction

Forecasting complex trajectories of marine resources is essential to fishery management and one of the major challenges of our time (Schindler and Hilborn, 2015; Ye *et al.*, 2015). An important factor to be considered in fishery management is the stock–recruitment relationship (SRR), which serves as a basis for any stock assessment procedure to ultimately calculate reference points (Hilborn, 2002; ICES, 2017, 2018). SRRs are based on the

assumption that recruitment (the number of fish that enter the adult population) is directly related to adult stock size (Kraus *et al.*, 2000; Jennings *et al.*, 2001). Parametric approaches, such as the Ricker model, were developed around the 1950s (Ricker, 1954) and in some cases still represent the method of choice in stock assessments (ICES, 2017). These models are very specific in the type of functional response curve to describe the SRR, and are linear, in the sense that, the relationship between recruitment and

biomass can be linearized through log-transformation (Ye *et al.*, 2015). However, they often fail to capture the high variability in recruitment data and this has led to questioning the existence of the relationship itself (Szuwalski *et al.*, 2015; Britten *et al.*, 2016; Perlala *et al.*, 2017). The fit of the SRR is sometimes so poor, that short-term predictions of spawning-stock biomass (SSB) are conducted using an average of recruitment over a particular number of years, instead of a SRR model (Deyle *et al.*, 2018). Both approaches, using average recruitment or a parametric model, assume that natural systems behave in a linear way, which may lead to biased fishery management decisions when stocks show complex dynamics such as aperiodic chaos, non-linearity, or non-stationarity (Ye and Sugihara, 2016; Perlala *et al.*, 2017; Deyle *et al.*, 2018).

Chaos and non-stationary dynamics are pervasive in natural systems and characterize many marine ecosystems and populations (May and Oster, 1976; Scheffer *et al.*, 2001; Möllmann *et al.*, 2015). These dynamics emerge from the inherent complexity of nature, governed by a multitude of factors (Ye *et al.*, 2015; Deyle *et al.*, 2016; Tu *et al.*, 2018). Assuming linearity and stability in recruitment models can, thus, result in wrong stock predictions (Glaser *et al.*, 2014; Ye *et al.*, 2015). As a consequence, new non-parametric modelling frameworks were developed to predict stock trajectories accounting for state-dependent and chaotic behaviour, such as the empirical dynamic modelling (EDM) framework (Sugihara *et al.*, 2012; Ye *et al.*, 2015; Deyle *et al.*, 2018). EDM is a minimal assumptive approach based on time-series observations, which reconstructs the temporal dynamics of a system by constructing a so-called attractor manifold (Sugihara *et al.*, 2012; Ye *et al.*, 2015). EDM is able to predict the future system trajectory based on its past dynamics (Ye *et al.*, 2015; Deyle *et al.*, 2018), thus accounting for state-dependent dynamics (Sugihara, 1994). This approach, and in particular multivariate simplex projection (MSP) has been applied to predict non-linear fish recruitment dynamics in a range of studies, and has also been applied directly to management, e.g. for the menhaden stocks along the East Coast of the United States (Perretti *et al.*, 2015; Ye *et al.*, 2015; Deyle *et al.*, 2018).

Another non-parametric approach suitable for modelling state-dependent and discontinuous recruitment dynamics is the stochastic cusp model (SCM), which is based on catastrophe theory (Zeeman, 1976; Thom, 1977; Grasman *et al.*, 2009; Petraitis and Dudgeon, 2016; Sguotti *et al.*, 2019). Here, a state variable z (for instance recruitment), depends on two control variables α and β . The model allows z to move from a state A (e.g. high recruitment) to a state B (e.g. low recruitment) following either a continuous or discontinuous path (Diks and Wang, 2016). SCM has been widely applied to economic and behavioural studies (van der Maas *et al.*, 2003; Diks and Wang, 2016), but to a lesser degree to marine ecological studies (Jones and Walters, 1976; Jones, 1977; Petraitis and Dudgeon, 2015; Sguotti *et al.*, 2019).

Another point often neglected in recruitment prediction is the effect of multiple external drivers and potential interactions such as predation, competition, and environmental variables (Myers *et al.*, 1995; Brander, 2005; Ottersen *et al.*, 2006; Stiasny *et al.*, 2016). However, in multiple cases the relationship between recruitment and environment can be spurious, non-linear, or non-stationary, and therefore is often not considered in stock assessments (Myers, 1998; Perlala *et al.*, 2017). Traditional stock–recruitment models, which often are parametric models,

assuming fixed parameters, usually fail to correctly incorporate the environmental information, because they often just consider additive effects of SSB and climate variables. Instead, non-parametric models such as MSP and SCM, can model interactions between the different drivers (i.e. biomass and climate variables) and thus may be able to integrate the climate information correctly (Ye *et al.*, 2015; Deyle *et al.*, 2018; Sguotti *et al.*, 2019). This is important because for effectively predicting the status of living marine resources the integration of environmental variables is becoming crucial given the widespread impacts of climate change on ecosystems and marine resources such as commercially important fish (Britten *et al.*, 2016; Gaines *et al.*, 2018).

Atlantic cod (*Gadus morhua*) is an iconic species from ecological, cultural, and economic points of view (Myers *et al.*, 1996). In recent decades, most North Atlantic cod stocks have collapsed, followed by prolonged periods of no recovery even after the application of strict management measures (e.g. fishing moratoria; Myers *et al.*, 1996; Hutchings, 2000; Hutchings and Rangeley, 2011; Frank *et al.*, 2016; Sguotti *et al.*, 2019). This failed recovery of Atlantic cod stocks suggests the presence of discontinuous dynamics and hysteresis (Frank *et al.*, 2011; Steneck *et al.*, 2011; Sguotti *et al.*, 2019). Eastern and western Atlantic stocks differ in life-history traits, exploitation trajectories and recovery potential (Pörtner *et al.*, 2008; Wang *et al.*, 2014; Frank *et al.*, 2016). Indeed, stocks in the West collapsed more abruptly compared to stocks in the East, which on average show more gradual declines (Frank *et al.*, 2016). Cod recruitment is highly state-dependent, depending on the dimension of the stock and environment conditions. Recruitment is fundamental to Atlantic cod recovery (Myers and Barrowman, 1996; Brander, 2005) and influenced by climate change (Myers and Drinkwater, 1989; Planque and Frédou, 1999; Stige *et al.*, 2006; Pörtner *et al.*, 2008; Pershing *et al.*, 2015). We here used stock assessment data from 20 Atlantic cod stocks to (i) investigate whether cod recruitment can be best described by the parametric Ricker model, by the non-parametric, “discontinuous” SCM, or by the non-parametric, state-dependent MSP approach, and (ii) test whether the model’s predictive power can be improved when including environmental variables. We show that the adoption of a multi-model approach should be considered when modelling stocks presenting different dynamics.

Material and methods

Data

We used recruitment (i.e. number of fish for a particular age and stock that recruit to the adult biomass in thousands, R) and SSB (i.e. biomass of mature fish in tonnes) data derived from stock assessments of 20 Atlantic cod stocks (Figure 1, Supplementary Figure S1). Data were provided by the International Council for the Exploration of the Sea (ICES), the National Oceanic and Atmospheric Administration of the United States (NOAA), the northwest Atlantic Fisheries Organization (NAFO), the Department of Fisheries and Ocean in Canada (DFO), and by personal communication (Supplementary Table S1). Recent assessments for cod stocks in the Kattegat, the western Baltic as well as the Norwegian coast have been conducted only for reduced periods. Therefore, we combined recent and older stock assessments after consistency checks of SSB and R time-series, by simply replacing the newer part of the time-series of the older

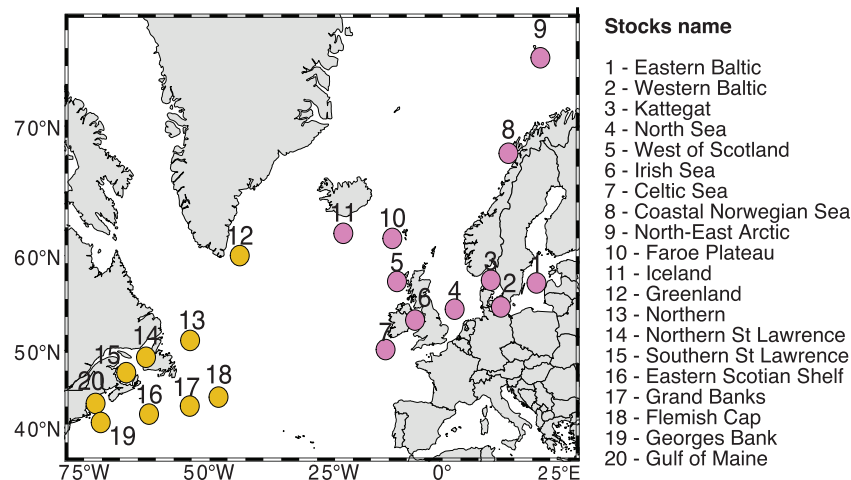


Figure 1. Map of cod stocks in the North Atlantic. Each circle corresponds to the centre of distribution of an Atlantic cod stock. The colour code corresponds to the division between western (orange, 12–20) and eastern stocks (pink, 1–11).

assessments with the newer time-series assessment (see [Supplementary Figure S2](#)).

We selected sea surface temperature (SST) and the indices of the North Atlantic oscillation (NAO) and Atlantic multidecadal oscillation (AMO) as climate predictors in our models. SST data were collected from the NOAA Extended Reconstructed Sea Surface Temperature dataset (ERSST, www.ncdc.noaa.gov) version 4. The dataset represents a reconstruction of SST from 1854 to the present and comprises monthly anomalies computed with respect to the period 1971–2000, resolved in a $2^\circ \times 2^\circ$ grid of spatial resolution. The data were averaged per year and per management unit. SST was chosen because of its importance for recruitment of Atlantic cod and is also a proxy for climate change at a local scale ([Planque and Frédou, 1999](#)). NAO and AMO were used as indices of climate variability at the supraregional scale. In particular NAO has been shown to highly correlate with Atlantic cod recruitment ([Stige et al., 2006](#)), whereas AMO is a good proxy for climate change at longer timescales in this area. The NAO is a large-scale, high frequency (7–25 years) climatic index depending on the different atmospheric pressure at sea level between Iceland and Azores. The AMO is instead a large-scale, low frequency (60 years) multidecadal index representing climate-related SST changes in the Atlantic Ocean. The data for both indices were collected from the Earth System Research Laboratory of NOAA (www.esrl.noaa.gov), and the AMO was averaged to annual values, whereas the NAO was averaged annually but just between December and March.

Modelling strategy

We compared multiple stock–recruitment models, the traditional *Ricker* model, the SCM, and MSPs (from the EDM framework). Recruitment models include either SSB alone or SSB in combination with one of the climate variables (i.e. SST, NAO, and AMO) as predictors. Because recruitment can be influenced by climatic factors at different life-stages (i.e. eggs, larvae, and juveniles), we applied multiple lags on the climate variables depending on recruitment age ([Supplementary Table S1](#)). We assessed the predictive power of the different models (three modelling approaches and explanatory variables and corresponding lags selection) on the test

data using fivefold cross-validation, which randomly splits the time-series in five parts, fitting the model on four (training data), and using the results to predict the last one (test data). In each of the five iterations, we compared the predicted with the observed test values using Pearson correlation coefficients (ρ ; [Ye et al., 2015](#); [Deyle et al., 2018](#)). We repeated this procedure 100 times to increase the robustness and eventually used the median of the 500 values of ρ for model comparison ([Figure 2](#)).

The recruitment models

The *Ricker* Model fits a curve between recruitment and SSB depending on parameters a and b ([Ricker, 1954](#)). These parameters allow the curve to bend in the middle, so that at very high SSB values recruitment will be low because of density-dependent effects. However, this model is log-linear, i.e. the relationship between recruitment and biomass can be linearized through log-transformation, thus, we will refer to it as a linear model throughout the text. Climate effects can be added through a new parameter (c ; [Figure 2](#), box1):

$$R_t = SSB_t \exp(a - b * SSB_{t-ageR}) \quad (1a)$$

$$R_t = SSB_t \exp(a - b * SSB_{t-ageR} + c * climate_{t-lags}), \quad (1b)$$

where $ageR$ is the age at recruitment, and $lags$ the offset between the effect of a *climate* variable and R depending on the age of recruitment [i.e. for each stocks the climate variables were lagged from R_t to R_{t-ageR} depending on the age at recruitment ([Supplementary Table S1](#))].

The starting values for the parameters were estimated from the linearized version of the function using the *FSA* ([Ogle, 2016](#)) package [[Equation \(2\)](#)]:

$$\log\left(\frac{R_t}{SSB_t}\right) = \log(SSB_t) \exp(a - b * SSB_{t-ageR} + c * climate_{t-lags}). \quad (2)$$

Subsequently the Stock–Recruitment function was fitted to the data using a non-linear model with as response variable the log-transformed recruitment.

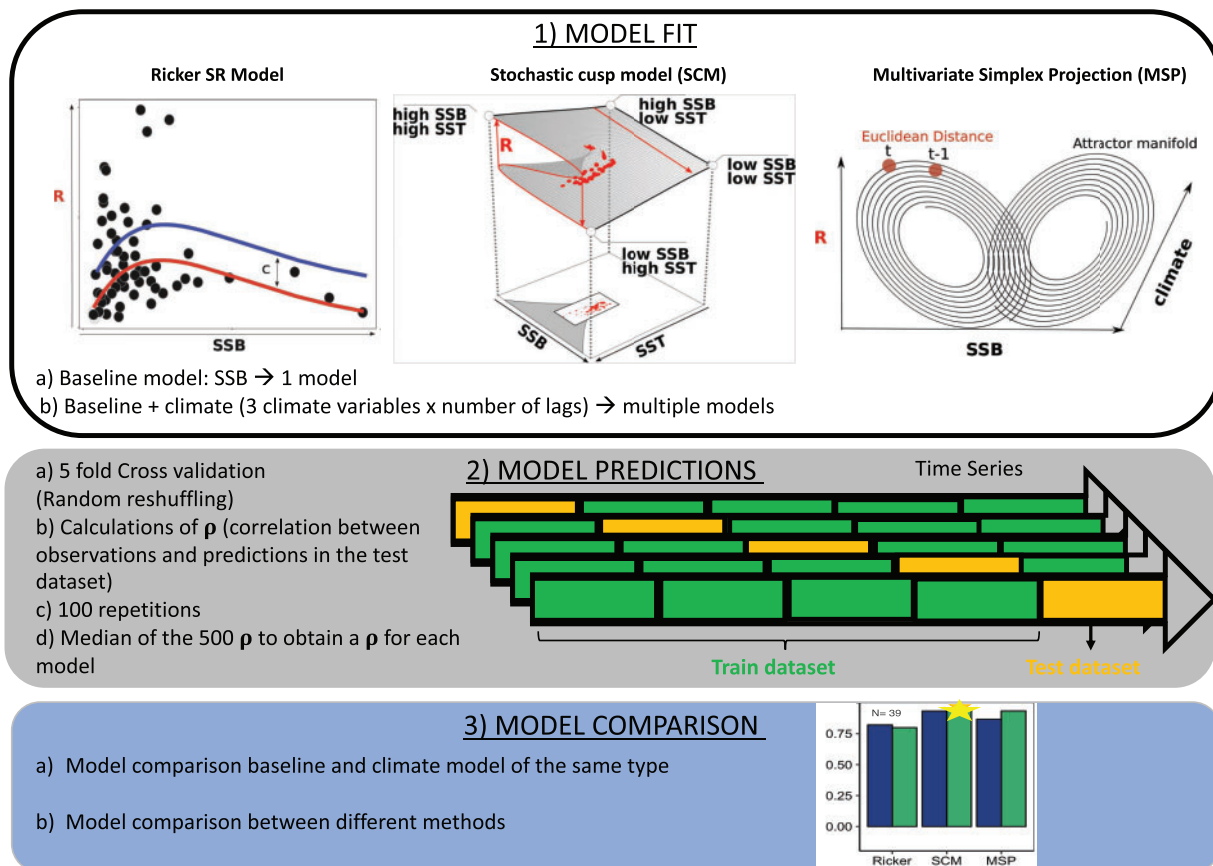


Figure 2. Schematic summary of the modelling approach. Box 1 shows the three model types applied. In the Ricker model (left) a curve depending on parameters (a) and (b) is fitted to show the relationship between recruitment (R) and SSB. A third parameter (c), allows the introduction of a climate variable and thus allows the curve to change between different climate states (i.e. above the mean in red, below the mean in blue). The stochastic cusp model (SCM; center) is shown both in a three-dimensional landscape and its projection in two-dimensional. In SCM the state variable R depends on two control variables (i.e. SSB and temperature). Although SSB controls the dimension of R, i.e. if R is found at the upper or lower shield, temperature controls the type of path that R will follow, either linear or discontinuous (s-shaped, i.e. the two red paths). The three-dimensional landscape can be projected on the two-dimensional plane in which the folded area, i.e. the area of discontinuous dynamics, is shown in grey. In the attractor reconstruction of R depending on SSB and climate made with multivariate simplex projection (MSP; right) every point in the attractor correspond to a time-step of the system. MSP allows for the prediction of the future step of the system based on Euclidean Distance Calculations and thus is a state-dependent approach. All methods were fit as baseline models using just SSB as control variable then adding the environmental variable. Box 2 shows the model evaluation procedure using fivefold cross-validation. From this procedure, the predictive power of all the models was calculated and finally compared (Box 3) to assess performance among models of the same type and between the three different methods.

SCM is based on the cusp, one of the seven canonical forms of catastrophe theory that describe sudden changes in a system because of small changes of external drivers (Thom, 1977; van der Maas *et al.*, 2003; Petraitis and Dudgeon, 2016; Sguotti *et al.*, 2019). The cusp model is based on a cubic differential Equation (3) and describes discontinuous transitions in a state variable z_t , controlled by two control variables α and β , and thus can be used to describe discontinuous dynamics in recruitment (Figure 2, box 1).

$$-V(z_t; \alpha, \beta) = -\frac{1}{4}z_t^4 + \frac{1}{2}\beta z_t^2 + \alpha z_t, \quad (3)$$

where $V(z_t; \alpha, \beta)$ is a potential function representing the rate of change of the system (z_t), depending on the two control variables (α, β).

Because natural processes and empirical data often include stochasticity, Equation (3) was reformulated as a stochastic

differential equation, adding the Wiener process ($\sigma_z dW_t$) with variance σ^2 :

$$-\frac{\partial V(z; \alpha, \beta)}{\partial z} = (-z_t^3 + \beta z_t + \alpha)dt + \sigma_z dW_t = 0, \quad (4)$$

where the first part of the equation is the drift term, σ_z is the diffusion parameter, and W_t represents the Wiener process.

The state variable, z_t , and the parameters, α and β [Equations (3) and (4)] are estimated as a linear function of one or more exogenous variables using a likelihood approach [Equations (5a)–(5c)].

$$z = w_0 + w_1 y_1 + w_2 y_2 + \dots + w_y y_y, \quad (5a)$$

$$\alpha = \alpha_0 + \alpha_1 x_1 + \alpha_2 x_2 + \dots + \alpha_y x_y, \quad (5b)$$

$$\beta = \beta_0 + \beta_1 x_1 + \beta_2 x_2 + \dots + \beta_y x_y \tag{5c}$$

where α_0, β_0 , and z_0 are the intercepts and α_1, β_1 , and z_1 the slopes of the models.

In our study z_t , the state variable, is a linear function of recruitment. α is the so-called asymmetry parameter and controls the size of z_t , thus in our study is a function of SSB. β is called the bifurcation parameter because it controls whether the state variable follows a continuous or discontinuous path (Petraitis and Dudgeon, 2015; Diks and Wang, 2016; Sguotti et al., 2019), and in our study is a function of the environmental variables [climate, see below Equations (7a)–(7c)].

The system presents multiple equilibria if it follows a discontinuous path (i.e. two stable and one unstable) and just one if it follows a continuous path. The number of equilibria of the system depends on the solution of Equation (4), from which the Cardan’s discriminant (δ) is derived:

$$\delta = 27\alpha^2 - 4\beta^3. \tag{6}$$

If $\delta > 0$, the system has one equilibrium, indicating a continuous path. Whereas if $\delta \leq 0$ the system has three equilibria, indicating a discontinuous path (Diks and Wang, 2016). Therefore, SCM allows the detection of interactive effects of the two control variables on the state variable. Any changes in the bifurcation parameter β , will lead to changes in the relationship between α and z_t and consequently dramatic changes of the state variable (Figure 2, box1, Supplementary Figure S3).

The model is represented by:

$$z_t = w_0 + w_1 R_t \tag{7a}$$

$$\alpha = \alpha_0 + \alpha_1 SSB_{t-ageR} \tag{7b}$$

$$\beta = \beta_0 + \beta_1 SSB_{t-ageR} \text{ or } \beta = \beta_0 + \beta_1 climate_{t-lags} \tag{7c}$$

In order to test the predictive power of the model, we first produced the linear predictors of the parameters and the state variable. These were then fit into Equation (8) to predict the new points on the surface.

$$V(\hat{z}) = \alpha + \beta \hat{z} - \hat{z}^3 = 0. \tag{8}$$

MSP is based on the EDM framework. The cornerstone of this framework is the Simplex Projection method. The principle of EDM is to reconstruct the dynamics of one or multiple time-series in a multidimensional space, i.e. an attractor manifold, and predict the future trajectory of the system based on these past dynamics (Figure 2, box1; Sugihara et al., 2012; Ye et al., 2015; Chang et al., 2017). Reconstructing the past dynamics of a system (in our case recruitment) is possible either using multiple variables (i.e. SSB or climate indices) or just time-lags of the system itself (i.e. recruitment; Sugihara et al., 2012). We here used differentiated recruitment time-series to build the attractor for each cod stock, and Simplex Projection [Equations (9) and (10)] to approximate the attractor dynamics of the system (Sugihara et al., 2012; Ye et al., 2015; Deyle et al., 2018). The time-series is transformed in a set of time-delayed coordinate vectors:

$$x = \{x_t, x_{t-\tau}, x_{t-2\tau}, x_{t-3\tau}, \dots, x_{t-(E-1)\tau}\}, \tag{9}$$

where x is the system, in our study recruitment, t is time, τ is the time-lag, and E the embedding dimension. E represents the dimensionality of the attractor (Ye et al., 2015). E is selected by predicting the attractor manifold one step ahead into the future (using leave-one-out cross-validation) then comparing the predictive power of models with a varying E . In order to predict the system into the future, \hat{x}_{t+1} , Euclidean distance is used and the system is predicted using nearest neighbourhood estimations

$$\hat{x}_{t+1} = \frac{\sum_{i=1}^{E+1} w_{i,t} x_{i,t+1}}{\sum_{i=1}^{E+1} w_{i,t}}, \tag{10}$$

where w_i represents the weights [Equation (11)], which are the Euclidean distance to the neighbour vector i relative to the nearest neighbour \bar{d} .

$$w_i = \exp\left(-\frac{d(x_t, x_i)}{\bar{d}}\right). \tag{11}$$

MSP uses Equation (9) but with multiple variables. In our study, the attractor reconstruction of recruitment was based on SSB alone or together with climate variables [climate; Equations (12a) and (12b)]:

$$R_t = \{SSB_{t-ageR}\} \tag{12a}$$

$$R_t = \{SSB_{t-ageR}, climate_{t-lags}\} \tag{12b}$$

Performing MSP requires two preliminary tests, the S-Map and the convergent cross mapping (CCM), to unravel recruitment dynamics and the relationship between recruitment and explanatory variables, respectively.

EDM-specific preliminary tests S-Map and CCM

The S-Map, was performed after the attractor reconstruction with Simplex Projection. This test includes a tuning parameter θ that controls the weights w_i from Equation (10), and, if bigger than 0 indicates non-linearity (Sugihara, 1994; Klein et al., 2016; Dakos et al., 2017). Significance of non-linearity was assessed using a null distribution generated from 500 surrogate time-series for each S-Map model. The surrogate time-series were created following Deyle et al. (2018) and were phase-randomized, which preserves the basic statistical properties of the original time-series (Ebisuzaki, 1997). We averaged the S-Map results for all Atlantic cod recruitment time-series to understand the overall dynamics.

We performed CCM between R and SSB and the climate variables (SST, NAO, and AMO), a technique to understand causality between time-series without assuming any distribution (Sugihara et al., 2012; Deyle et al., 2016; Pierre et al., 2018). CCM is based on the principle that, if SSB or climate variables have an influence, then the R time-series will contain information about the past state of these variables. CCM is performed using Equation (10; see Deyle et al., 2018):-

Software

All analyses were performed in the programming environment R (R Core Team, 2016, version 3.3.1) using the packages *FSA* (Ogle, 2016), *cusp* (Grasman *et al.*, 2009), *rEDM* (Ye *et al.*, 2016).

Results

In our multi-model approach, we compared the parametric, linear Ricker model with two non-parametric, state-dependent approaches, i.e. the SCM and the state-dependent MSP, with or without environmental variables as predictors (Figure 2). The two preliminary tests of the EDM, necessary to perform the MSP, revealed on average significantly non-linear dynamics in recruitment of Atlantic cod stocks, and an appropriate choice of explanatory variables (Supplementary Figures S4 and S5), thus allowing us to proceed with the analyses. For most of the Atlantic cod stocks, the best performing models produced high correlations between observed and predicted values ($0.7 < \rho < 0.8$). An exception were northeast Arctic, Iceland, and Gulf of Maine cod stocks where the predictive power was lower compared to the other stocks (about $\rho = 0.4$). Differences between the three model types were in general low (Figure 3). The Ricker model performed best for seven stocks, the SCM for eight stocks, and the MSP for five stocks (Figure 3, Supplementary Table S2). For stocks where SCM was the best, the MSP generally showed also a high predictive power, indicating that both models can well describe abrupt dynamics [e.g. Figure 3 (12, 13, 14, 17)]. The addition of climate variables as explanatory variables to the baseline SSB models generally increased the predictive power, independently of the model type, although SSB was often the most correlated explanatory variable (Figure 3, Supplementary Table S2 and as shown in CCM, Supplementary Figure S5). SST and AMO were selected, based on the predictive power of the model, in respectively eight stocks and NAO in the remaining four stocks, generally agreeing with CCM results (Figure 4, Supplementary Figure S5). However, adding a climate variable had only a weak or even no additional effect when the baseline SSB model performed already poorly [e.g. Figure 3 (8), Ricker model].

The Ricker model best represented more gradual declines in recruitment, typical for cod stocks around the British Isles (i.e. North Sea, West of Scotland, and Irish Sea), those closer to the Arctic (i.e. Faroe Plateau, northeast Arctic, and Iceland cod) and Georges Bank cod [Figure 4 (4, 5, 6, 10, 9, 11, 19), Supplementary Table S3], as illustrated by their individual time-series (Supplementary Figure S1). All of these stocks, except Georges Bank, displayed strong density-dependence in recruitment (Supplementary Table S3), which is characteristic for the Ricker model. Furthermore, Ricker models clearly revealed that recruitment in warmer years is usually lower for the same level of SSB when compared to colder conditions (as indicated by low SST, NAO, or AMO in Figure 4 (4, 5, 6)). The only exception with the reverse pattern of higher recruitment values at warmer conditions was northeast Arctic, hence the only cod stock that really profited from climate warming [Figure 4 (9)].

SCM instead is an approach from catastrophe theory, which models best discontinuous dynamics characterized by abrupt sudden shifts and hysteresis (i.e. in this case delayed recovery). The recruitment and SSB time-series of Canadian stocks on the western Atlantic side, but also Greenland and eastern Baltic cod (Supplementary Figure S1) show this type of dynamics, and hence SCM was the best approach for these stocks. SCM identified

discontinuous stock–recruitment dynamics caused by the interaction of SSB and the climate variable. Moreover, SCM can identify catastrophic collapse, which occurs when SSB is found in the “folded” area, or area of instability (see blue shaded areas in Figure 4 (12, 13, 14, 15, 16, 17, 18, 1), Supplementary Figure S3). Recruitment collapsed in these stocks, when in the instability area, in response to only small reductions in stock size [Figure 4 (12–18, 1)]. Consequently, SSB was a significant predictor in all SCMs, controlling the stocks dimension, while the climate variables modified the relationship between recruitment and SSB rendering it discontinuous, and thus inducing hysteresis (Supplementary Table S4). These two factors lead to the presence of stable low recruitment levels towards the end of the time-series. Low SSB coupled with warming (as indicated by climate variables SST, NAO, and AMO, Supplementary Table S4) had the potential to stabilize low recruitment. This is indicated by values outside the bifurcation area as best demonstrated by northern and Grand Banks cod [Figure 4 (13, 17)]. Other cod stocks such as those from the Gulf of St Lawrence, on the eastern Scotian Shelf and off Greenland were at the boarder of stable low recruitment levels [Figure 4 (12, 14–16)].

Eventually, we found MSP to be the best model for recruitment of stocks that did not show collapses, but mostly fluctuating dynamics such as cod in the western Baltic, the Kattegat (because, even if the SCM was the best the model, the fit was invalid), the Celtic Sea, the Norwegian coast and in the Gulf of Maine [Figure 4 (3, 2, 7, 8, 20), Supplementary Figure S1]. The MSP however, seemed also appropriate to model catastrophic dynamics, but less effectively than the SCM. In contrast to the stocks best modelled with SCM and Ricker, stocks best modelled with MSP showed a mixed response to recent warming with a clear negative effect on recruitment in the western Baltic only [Figure 3 (2)].

Discussion

Short-term predictions of the size of an incoming year-class is essential to modern assessments of commercial fish species, but often suffers from the accuracy of available models predicting recruitment based on continuous, linear relationship with SSB. In our study, we investigated (i) whether recruitment dynamics in Atlantic cod stocks are better predicted by non-parametric, state-dependent, or catastrophic statistical methodology compared to traditional parametric, linear approaches such as the Ricker stock–recruitment model and (ii) whether using climate variables as predictors in addition to SSB improves the predictive performance of such models.

The main result of our study is that predicting fish stock–recruitment can be improved by tailoring the modelling approach to the dynamical properties of each individual stock. We found cod stocks with more gradual and mostly linear dynamics to be best predicted by the traditional linear Ricker model, whereas stocks that experienced sudden abrupt changes in recruitment and stock size are best described by the SCM. SCM, based on catastrophe theory, is well suited to represent such discontinuous regime shift dynamics (Thom, 1972; Grasman *et al.*, 2009; Diks and Wang, 2016; Sguotti *et al.*, 2019). SCM allows for the identification of drivers and how their interactions result in unstable recruitment dynamics and hence provides a form of vulnerability assessment that can be instrumental in management (Petraitis and Dudgeon, 2015; Diks and Wang, 2016; Sguotti *et al.*, 2019). Eventually, MSP was most appropriate for stocks that displayed

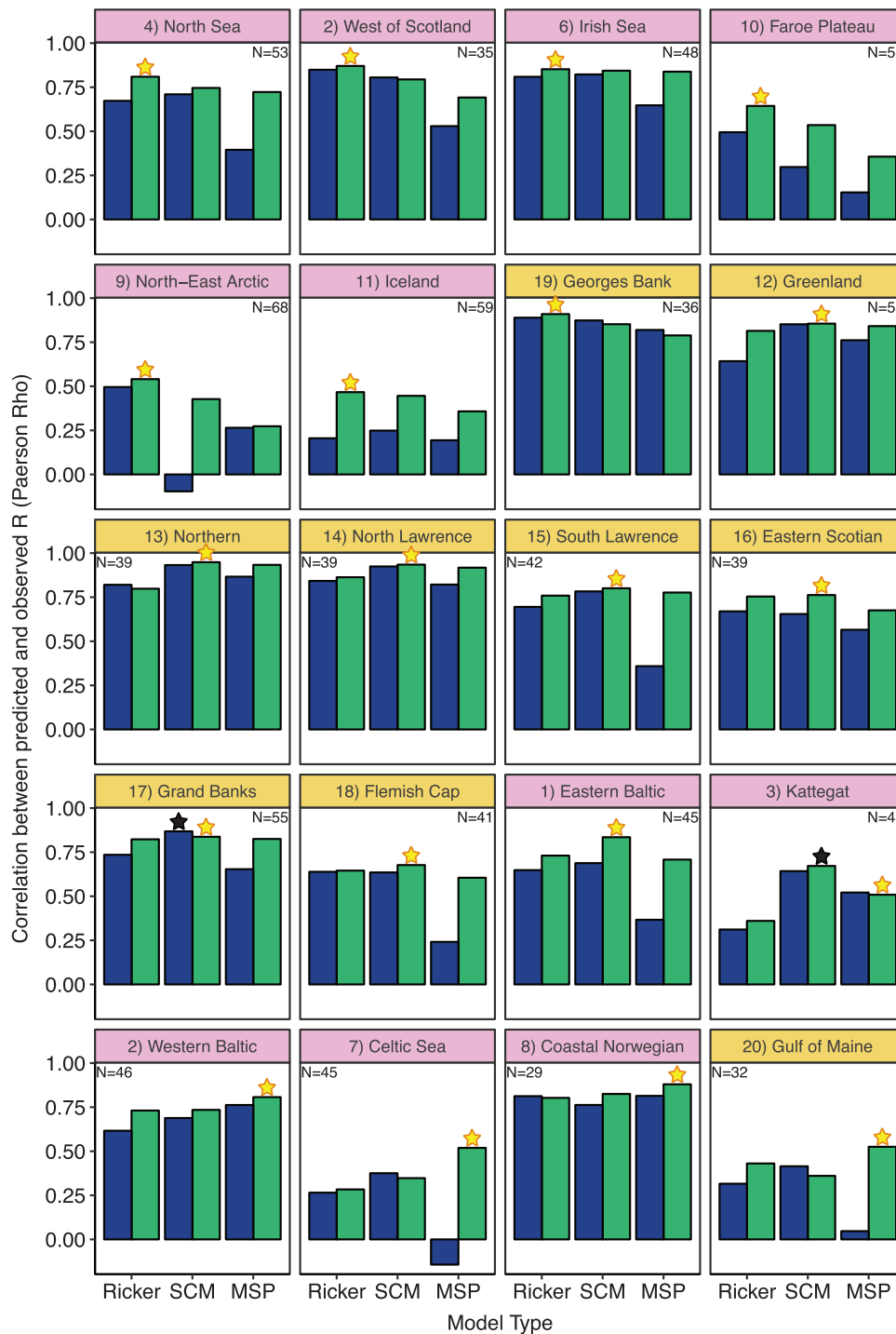


Figure 3. Stock–recruitment model comparison. The comparison between the predictive power of the best models resulting from the model selection between the Ricker, stochastic cusp model (SCM), and multivariate simplex projection (MSP) models. The median of the predictive power, derived from the cross-validation is shown for the three models without (blue, darker) and with (green, lighter) the inclusion of climate variables. The best model among the three, i.e. the model presenting the highest Pearson ρ between observed and predicted values of the test dataset, is indicated by a yellow (lighter) star for each stock. Black stars indicate the best models which however had a poor fit to recruitment and thus were substituted by the second-best model. The environmental variable that resulted in the best predictions can be found in [Figure 4](#) and [Supplementary Table S2](#). The number of years in the time-series is indicated for each stock. The colours underlying the names of the stocks correspond to the geographical location of the stock in pink (or from 1 to 11) in the East Atlantic, and orange (from 12 to 20) in the West. The numbers correspond to the stocks number in [Figure 1](#).

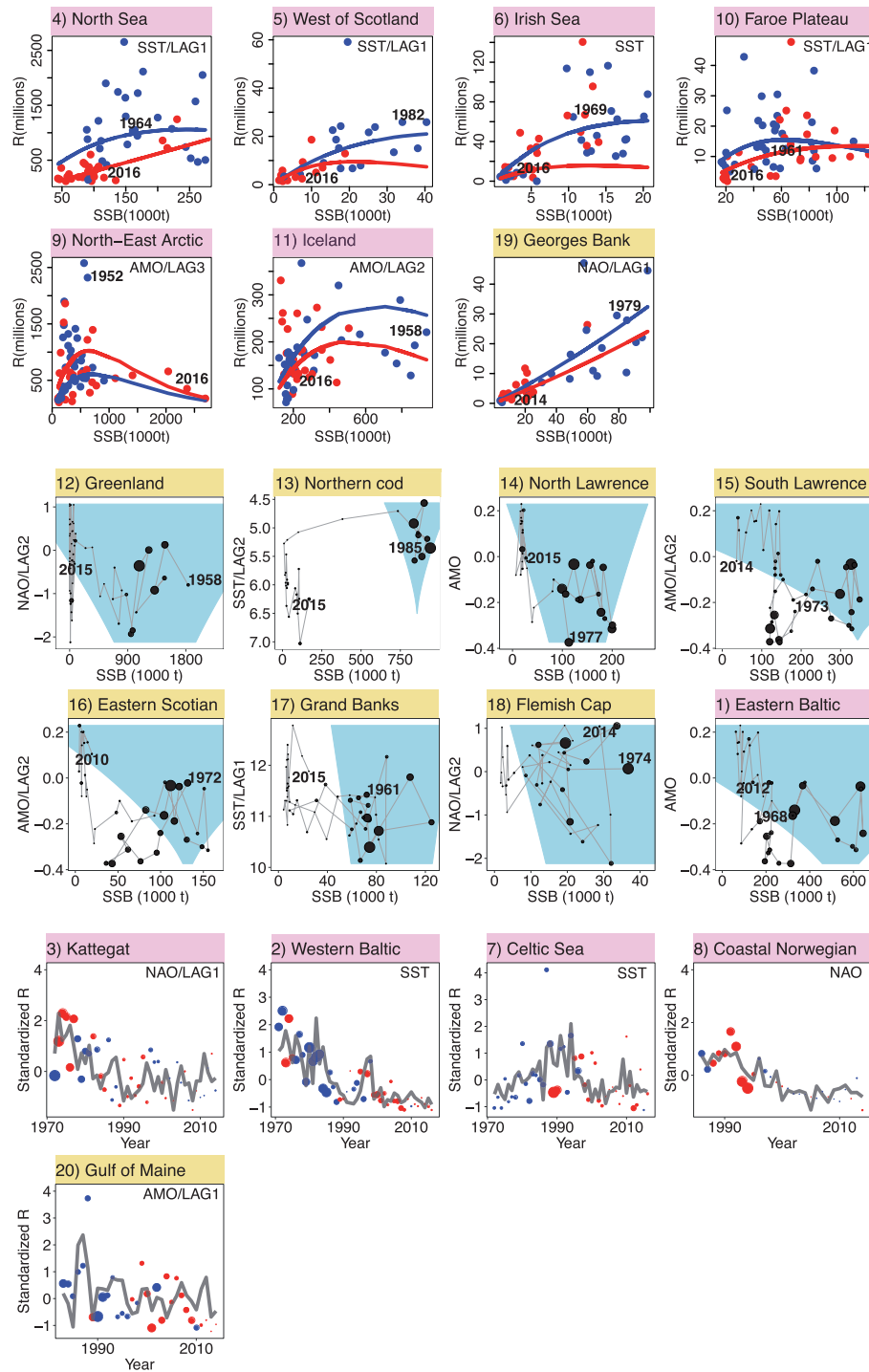


Figure 4. Visualization of stock–recruitment relationships (SRR) for Atlantic cod stocks. Every panel contains a representation of the best model for each of the stocks. Abbreviations used: spawning-stock biomass (SSB), recruitment (R), sea surface temperature (SST), North Atlantic oscillation (NAO), and Atlantic multidecadal oscillation (AMO). (4, 5, 6, 10, 9, 11, 19). Results for cod stocks best represented by the Ricker model. The colour of the dots corresponds to the state of the climate variable, red (lighter) above the mean, blue (darker) below the mean. The two lines indicate separate SRRs for the two climate states (above and below the mean). (12–18, 1). Results for cod stocks best represented by the stochastic cusp model (SCM), dots are scaled to the size of R. The blue area (or grey in black and white) corresponds to the instability area, thus the fold in the three-dimensional visualization (Figure 2, Supplementary Figure S3) where three equilibria are possible. (3, 2, 7, 8, 20). Results for cod stocks best represented by multivariate simplex projection (MSP); dots are scaled to the size of SSB. Colours correspond to the state of the climate variable indicated, red (lighter) above the mean, blue below the mean. The lines show the predicted trends of R over time. The colours in the boxes correspond to the geographical location of the stock in pink (or from 1 to 11) in the East Atlantic, and orange (from 12 to 20) in the West. The numbers correspond to stock numbers in Figure 1. The comparison between observed and predicted values for each model can be seen in Supplementary Figure S6.

more chaotic and fluctuating behaviours (Sugihara *et al.*, 2012; Ye *et al.*, 2015). Indeed, being a minimally assumptive model the most complex dynamics are better captured by it. MSP as part of the EDM suite of methods is based on attractor reconstruction and accounts for state-dependent dynamics (Ye *et al.*, 2015), which makes it a suitable approach to model also discontinuous dynamics (Ye *et al.*, 2015; Deyle *et al.*, 2018). Mostly, both SCM and MSP models performed similarly in our analysis and their relatively high predictive power indicated the importance of using state-dependent and/or discontinuous approaches to model recruitment (Ye *et al.*, 2015; Deyle *et al.*, 2018; Munch *et al.*, 2018).

Our study highlights that important differences exist between cod stocks in the eastern and western areas of the North Atlantic (Frank *et al.*, 2016). Stocks from the western Atlantic and in particular off Canada and Greenland often experienced pronounced catastrophic dynamics, i.e. abrupt and sudden changes in stock size and recruitment. Eastern Atlantic stocks instead showed more continuous dynamics and thus a higher degree of stability. In general western Atlantic cod stocks seemed to be less resilient to abrupt collapses because of more fragile life-history traits, an overall more extreme and difficult environment, and different exploitation histories (Rätz and Lloret, 2003; Pörtner *et al.*, 2008; Wang *et al.*, 2014; Frank *et al.*, 2016). Moreover, SST was selected in eastern Atlantic cod stocks models, whereas for Western stocks the climate indices explained better the recruitment variability. This difference might indicate that the eastern cod stocks are more influenced by local processes, whereas in the western Atlantic large-scale climatic fluctuations are more important. Nevertheless, the addition of the climate factors in the best stock–recruitment models almost always increased its predictive power and thus highlights the importance of using environmental information also in stock assessment and management considerations to consider broader ecosystem dynamics (Punt *et al.*, 2013; Skern-Mauritzen *et al.*, 2016).

These results highlight the presence of multiple dynamics in cod stocks, which are also supported by the results of the preliminary S-Maps tests revealing a significant level of non-linearity in recruitment time-series of Atlantic cod stock. However, the non-linearity signal is lower than expected, which we assume is because of the nature of the stock assessment data we used, and thus could be an underestimation (Brooks and Deroba, 2015). Such model output tends to be smoother and more linear than survey data (Storch *et al.*, 2017), which are unfortunately not available for all cod stocks and longer periods needed for our study.

Finally, the different models allow us to draw conclusions about the recovery potential for collapsed Atlantic cod stocks. Most of the stocks are negatively influenced by warming and climate variability, because the lowest recruitment and SSB coincide with the highest temperature (Brander, 2005; Drinkwater, 2005; Pörtner *et al.*, 2008). The only exception is northeast Arctic cod where a warming environment positively influences recruitment, because this stocks resides at the northern distribution limit of the species (Pörtner *et al.*, 2008). Apart from northeast Arctic and Iceland cod where SSB has recently reached high levels, the stocks for which the traditional Ricker model performed best, such as the ones from the North Sea and around the British Isles, show continuously low recruitment and SSB in recent years and a continuous relationship between these parameters. These imply that, with low exploitation pressure these stocks have a higher recovery potential, but with climate change the productivity will likely

remain low (Drinkwater, 2005). The situation is even worse for stocks that are best described by the SCM such as the western Atlantic stocks where the relationship between recruitment and SSB is discontinuous and thus the stocks display a strong hysteresis effect. Most of them are at present in a stable low state, suggesting that recovery might be even further delayed and productivity will remain low.

Conclusions

We demonstrated that discontinuous, state-dependent dynamics are pervasive in at least half of Atlantic cod stocks and need to be considered when predicting year-class strength. Indeed, even if our study does not necessarily reflect the goodness of the models to predict future recruitment, because the cross-validation included years after those predicted, we highlight the presence of different dynamics between stocks. Furthermore, we show the importance of accounting for environmental factors in recruitment predictions. Our findings indicate the need for more flexibility in the stock assessment process and highlight the importance for an adaptive multi-model approach that accounts for the inherent dynamics of living marine resource populations (Punt *et al.*, 2016). Flexible models and adaptive management are fundamental to move towards an ecosystem-based management approach, especially in the face of climate change. To achieve this, we need to move away from fixed and established model procedures and explore other options, to be ready to adapt to the new challenges that climate change will pose (King *et al.*, 2015).

Supplementary data

Supplementary material is available at the *ICESJMS* online version of the manuscript.

Acknowledgements

CS was supported through MARmaED (MARine Management and Ecosystem Dynamics under climate change). The MARmaED project has received funding from the European Union's Horizon 2020 research and innovation programme under the Marie Skłodowska-Curie grant agreement No. 675997. The results of this publication reflect only the author's view and the commission is not responsible for any use that may be made of the information it contains. Further financial support was received (to CM, SAO, and XC) by the Federal Ministry of Education and Research of Germany in the framework of marEEshift (project No. 01LC17058). K-MW was supported by the CLIMA project, reference RER 15/0008, Ministry of Foreign Affairs Norway. GS was supported by the Department of Defence SERDP 15 RC-2509, National Science Foundation NSF-DEB-1020372, and NSF-ABI-Innovation DBI-1667584, McQuown Chair, UCSD.

References

- Brander, K. M. 2005. Cod recruitment is strongly affected by climate when stock biomass is low. *ICES Journal of Marine Science*, 62: 339–343.
- Britten, G. L., Dowd, M., and Worm, B. 2016. Changing recruitment capacity in global fish stocks. *Proceedings of the National Academy of Sciences of the United States of America*, 113: 134–139.
- Brooks, E. N., and Deroba, J. J. 2015. When “data” are not data: the pitfalls of post hoc analyses that use stock assessment model output. *Canadian Journal of Fisheries and Aquatic Sciences*, 72: 634–641.

- Chang, C-W., Ushio, M., and Hsieh, C. 2017. Empirical dynamic modeling for beginners. *Ecological Research*, 32: 785.
- Dakos, V., Glaser, S. M., Hsieh, C-H., and Sugihara, G. 2017. Elevated nonlinearity as an indicator of shifts in the dynamics of populations under stress. *Journal of Royal Society Interface*, 14: 20160845.
- Deyle, E., Schueller, A. M., Ye, H., Pao, G. M., and Sugihara, G. 2018. Ecosystem-based forecasts of recruitment in two menhaden species. *Fish and Fisheries*, 19: 769–781.
- Deyle, E. R., May, R. M., Munch, S. B., and Sugihara, G. 2016. Tracking and forecasting ecosystem interactions in real time. *Proceedings of the Royal Society B: Biological Sciences*, 283: 20152258.
- Diks, C., and Wang, J. 2016. Can a stochastic cusp catastrophe model explain housing market crashes? *Journal of Economic Dynamics and Control*, 69: 68–88.
- Drinkwater, K. F. 2005. The response of Atlantic cod (*Gadus morhua*) to future climate change. *ICES Journal of Marine Science*, 62: 1327–1337.
- Ebisuzaki, W. 1997. A method to estimate the statistical significance of a correlation when the data are serially correlated. *Journal of Climate*, 10: 2147–2153.
- Frank, K. T., Petrie, B., Fisher, J. A. D., and Leggett, W. C. 2011. Transient dynamics of an altered large marine ecosystem. *Nature*, 477: 86–89.
- Frank, K. T., Petrie, B., Leggett, W. C., and Boyce, D. G. 2016. Large scale, synchronous variability of marine fish populations driven by commercial exploitation. *Proceedings of the National Academy of Sciences*, 113: 8248–8253.
- Gaines, S. D., Costello, C., Owashi, B., Mangin, T., Bone, J., García Molinos, J., and Burden, M. 2018. Improved fisheries management could offset many negative effects of climate change. *Science Advances*, 4: eaao1378.
- Glaser, S. M., Fogarty, M. J., Liu, H., Altman, I., Hsieh, C. H., Kaufman, L., Maccall, A. D., *et al.* 2014. Complex dynamics may limit prediction in marine fisheries. *Fish and Fisheries*, 15: 616–633.
- Grasman, R. P. P., Van Der Maas, H. L. J., and Wagenmakers, E-J. 2009. Fitting the cusp catastrophe in R: a cusp package primer. *Journal of Statistical Software*, 32: 1–27.
- Hilborn, R. 2002. The dark side of reference points. *Bulletin of Marine Science*, 70: 403–408.
- Hutchings, J. A. 2000. Collapse and recovery of marine fishes. *Nature*, 406: 882–885.
- Hutchings, J. A., and Rangeley, R. W. 2011. Correlates of recovery for Canadian Atlantic cod (*Gadus morhua*). *Canadian Journal of Zoology*, 89: 386–400.
- ICES. 2017. ICES Advice Technical Guidelines. http://ices.dk/sites/pub/PublicationReports/Advice/2017/2017/12.04.03.01_Reference_points_for_category_1_and_2.pdf (last accessed 6 March 2019).
- ICES. 2018. Advice Basis. http://www.ices.dk/explore-us/Documents/ICES_and_EBM.pdf (last accessed 6 March 2019).
- Jennings, S., Kaiser, M. J., and Reynolds, J. D. 2001. *Marine Fisheries Ecology*. Blackwell Science, Oxford, England.
- Jones, D. D. 1977. Catastrophe theory applied to ecological systems. *Simulation*, 29: 1–15.
- Jones, D. D., and Walters, C. J. 1976. Catastrophe theory and fisheries regulation. *Journal of the Fisheries Research Board of Canada*, 33: 2829–2833.
- King, J. R., Mcfarlane, G. A., and Punt, A. E. 2015. Shifts in fisheries management: adapting to regime shifts. *Philosophical Transactions B*, 370: 20130277.
- Klein, E., Glaser, S., Jordaan, A., Kaufman, L., and Rosenberg, A. 2016. A complex past: historical and contemporary fisheries demonstrate nonlinear dynamics and a loss of determinism. *Marine Ecology Progress Series*, 557: 237–246.
- Kraus, G., Muller, A., Trella, K., and Kouster, F. W. 2000. Fecundity of Baltic cod: temporal and spatial variation. *Journal of Fish Biology*, 56: 1327–1341.
- May, R. M., and Oster, G. F. 1976. Bifurcations and dynamic complexity in simple ecological models. *Source: The American Naturalist*, 110: 573–599.
- Möllmann, C., Folke, C., Edwards, M., Conversi, A., Möllmann, C., Folke, C., and Edwards, M. 2015. Marine regime shifts around the globe: theory, drivers and impacts. *Philosophical Transactions of the Royal Society B*, 370: 20130260.
- Munch, S. B., Giron-Nava, A., and Sugihara, G. 2018. Nonlinear dynamics and noise in fisheries recruitment: a global meta-analysis. *Fish and Fisheries*, 19: 964–973.
- Myers, R., Hutchings, J., and Barrowman, N. 1996. Hypotheses for the decline of cod in the North Atlantic. *Marine Ecology Progress Series*, 138: 293–308.
- Myers, R. A. 1998. When do environment-recruitment correlations work? *Reviews in Fish Biology and Fisheries*, 8: 285–305.
- Myers, R. A., and Barrowman, N. J. 1996. Is fish recruitment related to spawner abundance? *Fishery Bulletin*, 94: 707–724.
- Myers, R. A., Barrowman, N. J., Hutchings, J. A., and Rosenberg, A. A. 1995. Population dynamics of exploited fish stocks at low population levels. *Science*, 269: 1106–1108.
- Myers, R. A., and Drinkwater, K. 1989. The influence of Gulf Stream warm core rings on recruitment of fish in the northwest Atlantic. *Journal of Marine Research*, 47: 635–656.
- Ogle, D. H. 2016. FSA: Simple Fisheries Stock Assessment Methods. <https://cran.r-project.org/web/packages/FSA/FSA.pdf> (last accessed 4 September 2018).
- Ottersen, G., Hjermmann, D. O., and Stenseth, N. C. 2006. Changes in spawning stock structure strengthen the link between climate and recruitment in a heavily fished cod (*Gadus morhua*) stock. *Fisheries Oceanography*, 15: 230–243.
- Perlala, T. A., Swain, D. P., and Kuparinen, A. 2017. Examining non-stationarity in the recruitment dynamics of fishes using Bayesian change point analysis. *Canadian Journal of Fisheries and Aquatic Sciences*, 74: 751–765.
- Perretti, C. T., Munch, S. B., Fogarty, M. J., and Sugihara, G. 2015. Global evidence for non-random dynamics in fish recruitment. 1–22. [arXiv:1509.01434v1](https://arxiv.org/abs/1509.01434v1).
- Pershing, A. J., Alexander, M. A., Hernandez, C. M., Kerr, L. A., Le Bris, A., Mills, K. E., Nye, J. A., *et al.* 2015. Slow adaptation in the face of rapid warming leads to collapse of the Gulf of Maine cod fishery. *Science*, 350: 809–812.
- Petraitis, P. S., and Dudgeon, S. R. 2015. Variation in recruitment and the establishment of alternative community states. *Ecology*, 96: 3186–3196.
- Petraitis, P. S., and Dudgeon, S. R. 2016. Cusps and butterflies: multiple stable states in marine systems as catastrophes. *Marine and Freshwater Research*, 67: 37–46.
- Pierre, M., Rouyer, T., Bonhommeau, S., and Fromentin, J. M. 2018. Assessing causal links in fish stock–recruitment relationships. *ICES Journal of Marine Science*, 75: 903–911.
- Planque, B., and Frédou, T. 1999. Temperature and the recruitment of Atlantic cod (*Gadus morhua*). *Canadian Journal of Fisheries and Aquatic Sciences*, 56: 2069–2077.
- Pörtner, H. O., Bock, C., Knust, R., Lannig, G., Lucassen, M., Mark, F. C., and Sartoris, F. J. 2008. Cod and climate in a latitudinal cline: physiological analyses of climate effects in marine fishes. *Climate Research*, 37: 253–270.
- Punt, A. E., A'mar, T., Bond, N. A., Butterworth, D. S., de Moor, C. L., De Oliveira, J. A. A., Haltuch, M. A., *et al.* 2013. Fisheries management under climate and environmental uncertainty: control rules and performance simulation. *ICES Journal of Marine Science*, 71: 2208–2220.

- Punt, A. E., Butterworth, D. S., de Moor, C. L., De Oliveira, J. A. A., and Haddon, M. 2016. Management strategy evaluation: best practices. *Fish and Fisheries*, 17: 303–334.
- Rätz, H. J., and Lloret, J. 2003. Variation in fish condition between Atlantic cod (*Gadus morhua*) stocks, the effect on their productivity and management implications. *Fisheries Research*, 60: 369–380.
- R Core Team. 2016. R: a language and environment for statistical computing. R Foundation for Statistical Computing, Vienna, Austria.
- Ricker, W. E. 1954. Stock and recruitment. *Journal of the Fisheries Research Board of Canada*, 11: 559–623.
- Scheffer, M., Carpenter, S. R., Foley, J. A., Folke, C., and Walker, B. 2001. Catastrophic shifts in ecosystems. *Nature*, 413: 591–596.
- Schindler, D. E., and Hilborn, R. 2015. Sustainability. Prediction, precaution, and policy under global change. *Science (New York, N.Y.)*, 347: 953–954.
- Sguotti, C., Otto, S. A., Frelat, R., Langbehn, T. J., Ryberg, M. P., Lindegren, M., Durant, J. M., et al. 2019. Catastrophic dynamics limit Atlantic cod recovery. *Proceedings of the Royal Society B*, 286: 20182877.
- Skern-Mauritzen, M., Ottersen, G., Handegard, N. O., Huse, G., Dingsør, G. E., Stenseth, N. C., and Kjesbu, O. S. 2016. Ecosystem processes are rarely included in tactical fisheries management. *Fish and Fisheries*, 17: 165–175.
- Steneck, R. S., Hughes, T. P., Cinner, J. E., Adger, W. N., Arnold, S. N., Berkes, F., Boudreau, S. A., et al. 2011. Creation of a gilded trap by the high economic value of the Maine lobster fishery. *Conservation Biology*, 25: 904–912.
- Stiasny, M. H., Mittermayer, F. H., Sswat, M., Voss, R., Jutfelt, F., Chierici, M., Puvanendran, V., et al. 2016. Ocean acidification effects on Atlantic cod larval survival and recruitment to the fished population. *PLoS One*, 11: 1–11.
- Stige, L. C., Ottersen, G., Brander, K., Chan, K. S., and Stenseth, N. C. 2006. Cod and climate: effect of the North Atlantic oscillation on recruitment in the North Atlantic. *Marine Ecology Progress Series*, 325: 227–241.
- Storch, L. S., Glaser, S. M., Ye, H., and Rosenberg, A. A. 2017. Stock assessment and end-to-end ecosystem models alter dynamics of fisheries data. *PLoS One*, 12: e0171644.
- Sugihara, G. 1994. Nonlinear forecasting for the classification of natural time series. *Philosophical transactions of the Royal Society of London. Series A Biological Sciences*, 348: 477–495.
- Sugihara, G., May, R., Ye, H., Hsieh, C., Deyle, E., Fogarty, M., and Munch, S. 2012. Detecting causality in complex ecosystems. *Science*, 338: 496–500.
- Szuwalski, C. S., Vert-Pre, K. A., Punt, A. E., Branch, T. A., and Hilborn, R. 2015. Examining common assumptions about recruitment: a meta-analysis of recruitment dynamics for worldwide marine fisheries. *Fish and Fisheries*, 16: 633–648.
- Thom, R. 1972. *Structural Stability and Morphogenesis: An Outline of a Theory of Models*. Benjamin, New York.
- Thom, R. 1977. Structural stability, catastrophe theory and applied mathematics. *SIAM Review*, 19: 189–201.
- Tu, C.-Y., Chen, K.-T., and Hsieh, C.-H. 2018. Fishing and temperature effects on the size structure of exploited fish stocks. *Scientific Reports*, 8: 7132.
- van der Maas, H. L. J., Kolstein, R., and van der Pligt, J. 2003. Sudden transitions in attitudes. *Sociological Methods & Research*, 32: 125–152.
- Wang, H. Y., Botsford, L. W., White, J. W., Fogarty, M. J., Juanes, F., Hastings, A., Holland, M. D., et al. 2014. Effects of temperature on life history set the sensitivity to fishing in Atlantic cod *Gadus morhua*. *Marine Ecology Progress Series*, 514: 217–229.
- Ye, H., Beamish, R. J., Glaser, S. M., Grant, S. C. H., Hsieh, C., Richards, L. J., Schnute, J. T., et al. 2015. Equation-free mechanistic ecosystem forecasting using empirical dynamic modeling. *Proceedings of the National Academy of Sciences*, 112: E1569–E1576.
- Ye, H., Clark, A., Deyle, E. R., and Sugihara, G. 2016. rEDM: an R package for empirical dynamic modelling and convergent cross-mapping.
- Ye, H., and Sugihara, G. 2016. Information leverage in interconnected ecosystems: overcoming the curse of dimensionality. *Science*, 353: 922–925.
- Zeeman, E. 1976. Catastrophe theory. *Scientific American*, 234: 65–83.

Handling editor: Gary Griffith