



## Research Article

Majed Alshamaileh, Issam Hussain, Mark Baron, Ruth Croxton, Marleen Vetter, Jose Gonzalez-Rodriguez\*

# A study of *in vitro* metabolism and cytotoxicity of mephedrone and methoxetamine in human and pig liver models using GC/MS and LC/MS analyses

<https://doi.org/10.1515/chem-2020-0184>

received August 2, 2019; accepted November 16, 2020

**Abstract:** In the current study, the metabolism of two novel psychoactive substances (NPSs), mephedrone and methoxetamine (MXE), was studied *in vitro* in pig liver microsomes to determine potential metabolites by liquid chromatography-mass spectrometry (LC-MS). Later, *in vitro* studies were performed using HepaRG™ cells to determine the human metabolites of these drugs using gas chromatography-mass spectrometry (GC-MS). The aim of the study was to detect metabolites from the metabolic mixture in the human cell lines using GC-MS, since this is a more readily available technique within forensic laboratories. Microsomes were prepared through a conventional ultracentrifugation method and incubated under optimized conditions with the drugs for 3 h. Subsequently, the samples were investigated using LC-MS. A similar methodology was then applied in the HepaRG™ cells, and the GC-MS conditions were optimized using *N,O*-bis(trimethylsilyl)trifluoroacetamide as a derivatization agent. The analysis showed two molecules from a successful *in vitro* metabolism, namely, hydroxytolyl-mephedrone and nor-dihydro mephedrone. For MXE, two metabolites are presented produced by the *O*-demethylation and reduction of the ketone moiety to the corresponding alcohol, respectively. Using the human HepaRG™ cells, only nor-dihydro mephedrone could be identified by GC-MS. Since hydroxytolyl-mephedrone and the MXE metabolites are more polar, it is suggested that GC-MS even with derivatization may not be suitable. In addition, cytotoxicity was studied utilizing HepaRG™ cell lines. The drugs show cytotoxic effects

causing *in vitro* cell death, within the specified range of  $EC_{50}$  0.3211 mM (79  $\mu$ g/mL) and 0.6297 mM (111  $\mu$ g/mL) for mephedrone and MXE, respectively. These drugs were able to cause 73–84% cell death.

**Keywords:** *in vitro* metabolism, mephedrone, methoxetamine, cytotoxicity, mass spectrometry,  $EC_{50}$

## 1 Introduction

In recent years, many designer drugs have appeared on the recreational drug market, where most of them are sold as “legal highs” by street suppliers or via the Internet [1]. “Designer drugs” are those produced by performing minor alterations to one or more functional groups of a known chemical with specific pharmacological activity to avoid the legal regulations and to produce more effective substances [2].

The therapeutic and toxicological profiles of the designer drugs are not systemically studied by pharmaceutical companies and regulatory authorities as in the case of pharmaceutical drugs. Therefore, the analysis of designer drugs and their metabolites has recently received increasing interest from academic and governmental researchers [3]. Metabolic studies with regard to the toxicological profiles of designer drugs are one of the most important research areas. The limited opportunities to obtain reference standards for the metabolites of novel psychoactive substances (NPSs) make *in vitro* production of these metabolites a valuable tool to develop analytical methods for the detection of NPS and their metabolites. However, caution needs to be added as the conclusions from these studies might not be directly applicable to humans. As Tice et al. suggested [4] the following reasons to observe caution: (i) problems to include xenobiotic metabolism into *in vitro* assays, (ii) problems to follow interactions between different cell types, (iii) difficulties in extrapolating the results from *in vivo* doses to *in vitro* concentrations, and (iv) problems to track long-term exposures *in vitro*.

\* Corresponding author: Jose Gonzalez-Rodriguez, School of Chemistry, University of Lincoln, Brayford Pool, Lincoln LN6 7TS, United Kingdom, e-mail: [jgonzalezrodriguez@lincoln.ac.uk](mailto:jgonzalezrodriguez@lincoln.ac.uk), tel: +44-1522-886878; fax: +44-1522-201109

Majed Alshamaileh, Mark Baron, Ruth Croxton, Marleen Vetter: School of Chemistry, University of Lincoln, Brayford Pool, Lincoln LN6 7TS, United Kingdom

Issam Hussain: School of Life Sciences, University of Lincoln, Brayford Pool, Lincoln LN6 7TS, United Kingdom

Since mephedrone was described as one of the first legal highs in 2007, it has been detected in many toxicological samples [5–8]. Due to the fatalities reported after the consumption of mephedrone, it was added to the UK Misuse of Drugs Act 1971 in 2010 before the Psychoactive Substance Bill was passed in the UK in 2015 [9]. No much data are available about the clinical or toxic effects of mephedrone, and it has never been licensed as a medicine since its first appearance in the illicit drug market in 2007. Other countries have followed a similar approach; and it is now banned, but in others it still remains as a legal substance. Although being a popular drug, limited data are still found on the metabolism of mephedrone in the literature [10–12]. More recent work from M. Farré *et al.* has opened the door to a greater understanding of the pharmacokinetics [13,14], *in vivo* human metabolism [15], pharmacology [16,17] and clinical studies [18].

Methoxetamine (MXE) 2-(ethylamino)-2-(3-methoxyphenyl)cyclohexanone is a newer, synthetic, psychoactive drug derived from ketamine [12,19]. It is believed that MXE is being used as a ketamine substitute, owing to its ability to produce comparable hallucinogenic and dissociative effects [20]. Initially, MXE was designed in part to prevent the urotoxicity associated with ketamine and to be tested as an antidepressant [19,20]. However, since its debut on the Internet in 2010, it has become a popular recreational drug especially among adolescents. Indeed, there has been an increase in the number of reports regarding the abuse of MXE by humans, which resulted in serious or even fatal outcomes [21,22]. Accordingly, MXE was included in the list of new psychoactive substances of the European Monitoring Centre for Drugs and Drug Addiction (EMCDDA), which was categorized as a ketamine derivative [20]. In April 2012, MXE was placed under temporary class drug control in the UK and is now banned through the Psychoactive Substance Bill (2015). Some information regarding the toxicological and clinical data can be found in literature for MXE, with limited metabolic studies being available [19,23,24].

Even though these compounds are now banned in the UK and other countries, the limited information on their metabolism may still make it hard for investigations and emergency services in the UK or other countries without a blanket ban. The increasing reported abuse of NPSs including mephedrone and MXE, combined with restricted information about their toxicological profile, has created a requirement for the production and identification of their metabolites.

Therefore, this research will focus on the initial screening of the metabolites. Considering the limitations, *in vitro* approaches are preferred methods for studying

the metabolism of designer drugs when ethical considerations are in place. Additionally, *in vitro* drug metabolism methods are generally easier and more rapid to apply compared to *in vivo* approaches. *In vitro* metabolism using microsomes, an approach to study the metabolic profile of new emerging drugs, is widely used in the pharmaceutical industry. Microsomes are vesicle-like artefacts that are made from portions of endoplasmic reticulum after disintegrating eukaryotic cells; they can be concentrated and separated from other cellular debris by differential centrifugation [25]. The pig liver has been used as an animal model for drug metabolic studies because of its similarity in size and physiology with that of humans and the similar distribution of different families of CYP450 enzymes between pigs and humans [26]. It is therefore a good screening tool to identify potential metabolites.

Also, the use of *in vitro* human cell lines, such as HepaRG™ cells, to identify any metabolites needs to be considered in studies as animal models may not predict the exact human metabolism. The aim of the study was to detect metabolites from the metabolic mixture in the human cell lines using a gas chromatography–mass spectrometry (GC-MS), since this is a more readily available technique within forensic laboratories. Also, a comparison with an animal model using liquid chromatography–mass spectrometry (LC-MS) is included. Consequently, this study tries to identify potential metabolites of MXE and mephedrone, which could be easily analysed in commercial laboratories. To the authors' knowledge, human HepaRG™ cells have not been used to identify any metabolites for MXE or mephedrone.

## 2 Materials and methods

Mephedrone and MXE were purchased legally from web-based companies before they were declared illegal and stored under the appropriate drug license after the ban. The structure and purity of the purchased drugs were confirmed by Fourier transform infrared spectroscopy (FTIR) and MS.

Tris–Cl 1 M stock solution, sodium pyrophosphate and EDTA, nicotinamide adenine dinucleotide phosphate (NADP), glucose-6-phosphate dehydrogenase enzyme (G6PD) and glucose-6-phosphate (G6P), trypan blue, and phosphate buffer (pH = 7) solution were all of analytical grade (Sigma, UK). Potassium chloride, monobasic sodium phosphate, dibasic sodium phosphate, magnesium chloride, methanol, and formic acid (99%) were

all of analytical grade (Fisher, UK). Deionized water (resistance = 15 M $\Omega$ ) was used in all preparations and, where needed, filtered, and degassed prior to use. For derivatization, *N,O*-bis(trimethylsilyl)trifluoroacetamide (BSTFA was purchased from Supelco (UK).

Select NPS were studied using pooled human suspension hepatocytes, namely, primary human hepatocytes, cryopreserved hepatocytes recovery medium (catalogue number: CM7000), and primary human hepatocytes maintenance supplement pack (catalogue number: CM4000) containing dexamethasone and COCKTAIL-B solution were all from Gibco (UK).

For the study of selected NPS using HepaRG™: HepaRG™ cryopreserved cell line (catalogue number: HPRGC10), William's E Medium-no phenol red (catalogue number: A12176-01), HepaRG™ Thaw, Plate, & General Purpose Medium Supplement (catalogue number: HPRG770), HepaRG Tox Medium Supplement (catalogue number: HPRG730), HepaRG Maintenance/Metabolism Medium Supplement (catalogue number: HPRG720), and GlutaMAX™-I Supplement (catalogue number: A12860-01) were all from Gibco (UK).

Fresh pig liver was obtained from a local abattoir.

## 2.1 Preparation of buffers and solutions

The NADPH-regenerating system (30 mM G6P, 5 U/mL G6PD, 10 mM NADP, and 30 mM MgCl<sub>2</sub>) was freshly prepared every day before incubation. The homogenizing buffer consisted of 0.1 M Tris HCl, 10 mM EDTA, and 150 mM KCl; the microsome-preservation buffer of 0.05 M Tris HCl, 10 mM EDTA and 20% (v/v) glycerol, and the pyrophosphate buffer of 0.1 M Na-pyrophosphate and 10 mM EDTA, with the final pH values adjusted to 7.4 using sodium chloride or hydrochloric acid.

HepaRG™ Thaw, Plate, & General Purpose Medium and HepaRG Tox Medium were freshly and aseptically prepared by adding 1 mL of GlutaMAX and 14 mL of HepaRG™ Thaw, Plate, & General Purpose Medium or HepaRG™ Tox Medium Supplement to 100 mL of William's Medium E.

HepaRG™ Maintenance/Metabolism Medium was freshly and aseptically prepared by adding 1 mL of GlutaMAX and 16 mL of HepaRG™ Maintenance/Metabolism Medium Supplement to 100 mL of William's Medium E.

Master stock solutions of mephedrone and MXE were prepared in HepaRG™ Thaw, Plate, & General Purpose Working Medium and were at least 10 times more concentrated than the highest concentration tested (i.e.

$1.6 \times 10^2$  mM). All stock solutions were preserved at  $-20^\circ\text{C}$  for later use.

Pooled human hepatocyte stocks were stored and maintained under liquid nitrogen ( $-196^\circ\text{C}$ ) until needed. The cryopreserved pooled hepatocyte vial was thawed and re-suspended into 10 mL media to a final concentration of  $1 \times 10^6$  cells/mL ( $10 \times 10^6$  total cells count). Cell viability was estimated to be greater than 85% using trypan blue exclusion test. Trypan blue test solution test was prepared at 0.4% in phosphate-buffered solution and 0.1 mL added to 1 mL cell solution and examined under microscope.

## 2.2 Isolation and incubation of liver microsomes

Liver microsomes were isolated following previously published protocols with minor modifications [23,27,28]. Briefly, liver was freshly obtained, washed with homogenizing buffer at pH 7, and sliced into 4 g portions. The sliced portions were further cut into small pieces using a surgical blade, broken apart with 3 volumes of ice-cold homogenizing buffer using a handheld bio-homogenizer, and homogenized using Teflon mortar and pestle. The homogenate was centrifuged for 15 min at  $12,500 \times g$  at  $4^\circ\text{C}$ , in an Allegra X-22 from Beckman Coulter™ (UK), and the supernatant was divided into two portions, of which one was stored as S9 fraction and the other was further ultracentrifuged for 45 min at  $76,800 \times g$  at  $4^\circ\text{C}$  in a Mikro 20 Hettich Zentrifugen Microcentrifuge (USA). The pellet was re-suspended with 2 volumes of ice-cold pyrophosphate buffer, further homogenized, and ultracentrifuged for 70 min at  $76,800 \times g$  at  $4^\circ\text{C}$ ; the supernatant was discarded and the formed pellet was suspended with 3 volumes of microsome-preservation buffer, further homogenized, and stored at  $-80^\circ\text{C}$  in a Binder UF V 500 ULT Freezer until needed.

Five 1.5-mL microcentrifuge tubes for each test compound were prepared; five 1.5-mL microcentrifuge tubes included duplicate tubes for both 0 time and 3 h, and one tube for the negative control. Each tube contained 375  $\mu\text{L}$  0.1 M phosphate buffer (pH 7.4), pre-warmed to  $37^\circ\text{C}$ , 50  $\mu\text{L}$  NADPH-regeneration system, and 50  $\mu\text{L}$  of 10-fold test compound stock solution (100  $\mu\text{g}/\text{mL}$ ). The mixture was then incubated in a water bath for 5 min at  $37^\circ\text{C}$ . For the negative control, 50  $\mu\text{L}$  NADPH-regeneration systems were replaced by 50  $\mu\text{L}$  0.1 M phosphate buffer. Prepared microsomes or S9 fractions were thawed and diluted to 10  $\text{mg}/\text{L}$  and 25  $\mu\text{L}$  added to each tube. Samples were

mixed and incubated at 37°C in a shaking water bath. The process was terminated by adding 250 µL ice-cold methanol at 0 time for two of the positive test tubes and at 3 h for the other two positive tubes and the negative tube sample. Sample tubes were centrifuged for 10 min at 13,000 × *g*. The supernatant was then filtered through 0.45 µm filters (Sartorius, Germany) and 5 µL injected onto the LC-MS system (Agilent, US).

LC-MS analyses were performed with an Agilent 6310 LC-MS ion trap system equipped with electrospray ionization. Data acquisition was performed using DataAnalysis for 6300 Series Ion Trap LC-MS version 4.0 © software, and the scans were performed at a scan range between 40 and 500 amu. The analytes were detected in positive ionization mode (MS+). The instrument was tuned and calibrated according to manufacturer's specifications. Chromatographic separations were carried out at room temperature on Agilent Eclipse plus C18, 3.5 µm, 4.6 × 150 mm. The mobile phase consisted of methanol/water/formic acid (50/50/0.1, v/v/v), isocratic flow rate of 0.30 mL/min for 10 min. The MS detector was tuned according to the following conditions: capillary voltage: 3,500 V, capillary intensity: 1 nA, maximum acquisition time: 200 ms, nebulizer pressure: 30 psi, dry gas flow: 11 L/min, and dry gas temperature: 325°C.

### 2.3 Preparation and culture of pooled human hepatocytes

Pooled human hepatocyte stocks were stored and maintained under liquid nitrogen (−196°C) until needed. The cryopreserved pooled hepatocyte vial was thawed and re-suspended in 10 mL media to a final concentration of 1 × 10<sup>6</sup> cells/mL (10 × 10<sup>6</sup> total cells count). Cell viability was estimated to be greater than 85% using trypan blue exclusion test. Trypan blue test solution test was prepared at 0.4% in phosphate-buffered solution and 0.1 mL added to 1 mL cell solution and examined under microscope.

The final concentration of 10, 20, 40, 60, 80, and 100 µM of mephedrone and MXE was used for metabolism studies using pooled human hepatocytes. For each concentration, the metabolic profile was studied at 0, 30, 60, 90, and 120 min. The metabolic reaction was initiated by adding 60 µL of the prepared cell suspension and 15 µL of the 10× stock drug onto 1.5 mL Eppendorf tube and topped up with media into 150 µL (final drug concentration = 1×, final cell count > 50 × 10<sup>3</sup> viable cells). At the

specified time, the reaction was terminated by adding 50 µL 10% DMSO.

### 2.4 Preparation and culture of cryopreserved HepaRG™ cells

HepaRG™ cell stocks were stored and maintained under liquid nitrogen (−196°C) until needed. HepaRG™ vial was semi-thawed in a water bath at 37°C and the cell suspension was aseptically transferred into pre-warmed 9 mL of HepaRG™ Thaw, Plate, & General Purpose Working Medium. After centrifugation of cells at room temperature (20°C) at 357 *g* for 2 min, the supernatant was aspirated and the pellet re-suspended in 5 mL of the HepaRG™ Thaw, Plate, & General Purpose Working Medium. The viability of the HepaRG™ was estimated to be greater than 85% using trypan blue exclusion test.

Concentrations of 10, 20, 40, 60, 80, and 100 µM of mephedrone and MXE were used for metabolism studies using HepaRG™. For each concentration, the metabolic profile was studied at 0 time, 90 min and 24 h. Previously prepared HepaRG™ cells were seeded onto central wells of collagen-coated 96-well plates at a density of 50 × 10<sup>3</sup> cells/well in HepaRG™ Thaw, Plate, & General Purpose Working Medium (50 µL cell solution topped up to 200 µL media). After 6 h, the media were renewed with 20 µL 10× master solution of each drug concentration and topped up to 200 µL HepaRG™ Tox Medium Supplement. Two wells were spared as blank which were topped up to 200 µL HepaRG™ Tox Medium Supplement media; and for zero times sample, 20 µL of each drug concentration was topped up to 200 µL HepaRG™ Tox Medium Supplement media.

The final 200 µL resultant aqueous mixture was extracted using 400 µL ethyl acetate and then centrifuged at 3,500 rpm for 10 min. Organic layer was moved into a clean glass vial via a pipette and then evaporated to dryness using a sample concentrator under streaming N<sub>2</sub>, reconstituted with 50 µL acetonitrile, and BSTFA was added in excess to the mixture warmed in water bath at 50°C for 10 min to enhance the derivatization reaction before the samples were then injected into GC-MS (Perkin Elmer, USA).

The GC-MS components were from Perkin Elmer (USA). GC model Clarus 600 equipped with an auto sampler and MS model Clarus 600 operated with TurboMass 6.4.2 (Perkin Elmer, USA, 2008). Standards and samples were run on an Agilent Technologies DB-1 MS column (30 m × 0.25 mm × 0.25 µm). Oven temperature programme

was as following: 150°C for 4 min increasing at 25°C/min to a final temperature of 350°C. Injector port temperature was held at 250°C. The carrier gas was helium at 1 mL/min and the injection volume was 1 µL. The transfer line temperature was held at 280°C. Positive ionization was achieved using an electron impact source at 200°C with electron energy of 70 eV and the multiplier was set to 300 V. The peaks were observed in total ion count after a 3-min solvent delay. The scan range was 45–320 *m/z* with a scan time of 0.5 s and an inter-scan delay of 0.01 s.

Electronic balance was from Sartorius (Germany), GPE-scientific Teflon mortar & pestle (UK), ultrasonic bath was from Kerry (UK). Shaking water bath was from Grant Instruments (UK), and a sample concentrator model was DRI-BLOCK<sup>®</sup>, DB.3A from TECHNE (UK), which were used for sample preparation.

## 2.5 Using HepaRG<sup>™</sup> for MTT reduction studies – Cytotoxicity

Previously prepared HepaRG<sup>™</sup> cells were seeded into central wells of collagen-coated 96-well plates at a density of  $100 \times 10^3$  cells/well in HepaRG<sup>™</sup> Thaw, Plate, & General Purpose Working Medium (50 µL cell solution topped up to 200 µL media). Two wells were spared as blank control, and the peripheral wells were filled with sterile water to prevent media evaporation. The 96-well plate was incubated at 37°C in a humidified atmosphere with 5%/95% CO<sub>2</sub>/ambient atmosphere and 100% relative humidity for cell adhesion. After 6 h, the medium was renewed; and on day 1 and day 4, the medium was replaced with HepaRG<sup>™</sup> Tox medium and incubated under the same conditions, while observing the cell morphology at the time of replacing the media, the methylthiazolyldiphenyl-tetrazolium bromide test (MTT) reduction assay experiments were carried on day 7 with freshly prepared test drugs. On day 7 after cell seeding, the HepaRG<sup>™</sup> Tox medium was renewed and the cells were incubated for 48 h with different concentrations of mephedrone and MXE at 37°C, in a humidified atmosphere with 5%/95% CO<sub>2</sub>/ambient atmosphere and 100% relative humidity. Those drug concentrations were freshly prepared from the master stock concentration in HepaRG<sup>™</sup> Tox medium. Each individual plate included two replicates of blank controls (just media) and two replicates of negative control (full cell and media with no test agents). After the 48-h incubation period, the incubation medium was aspirated, and the attached cells were washed one time, followed by the addition of fresh

HepaRG<sup>™</sup> Tox medium containing 0.5 mg/L MTT. The cells were re-incubated at 37°C in a humidified atmosphere with 5%/95% CO<sub>2</sub>/ambient atmosphere and 100% relative humidity for 3 h. After aspirating the medium, the formed insoluble crystals were dissolved in 100% dimethyl sulfoxide (DMSO). A multiwell plate reader was used to run the spectrophotometric analysis at 570 nm wavelength.

For each drug, a range of concentrations from  $4 \times 10^{-2}$  to 16 mM was tested, each in three independent experiments. The mean absorbance of the triplicate experiments for each drug concentration on each occasion was expressed as a percentage of the mean absorbance of the control wells.

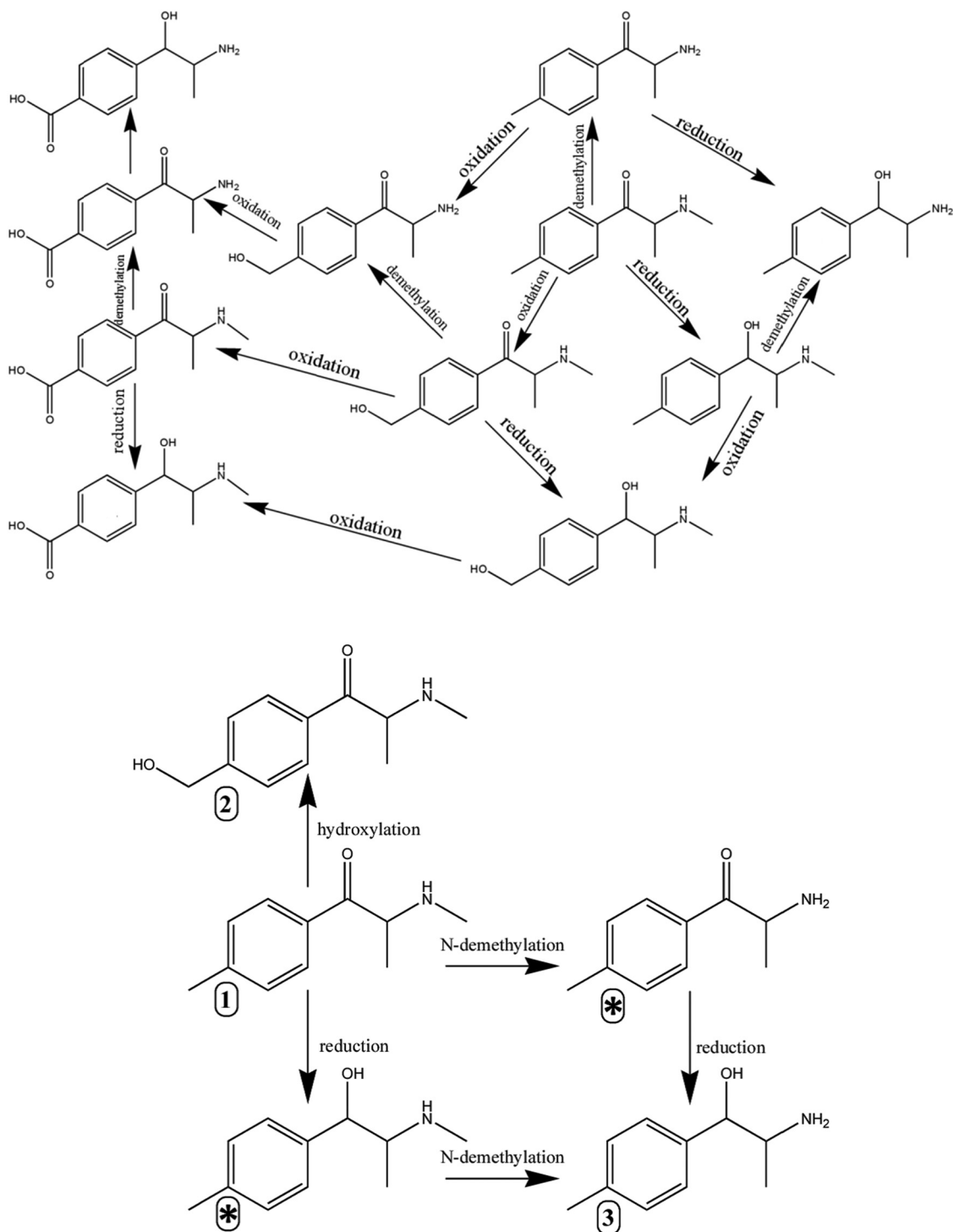
## 2.6 Ethical standards

We declare that the presented work complies with the current British law and ethical standards. This article does not contain any studies with human participants or live animals performed by any of the authors. The pigs were slaughtered in the abattoir and sold for food consumption. Consequently, the results presented in this work are not linked to animal testing. All procedures were ethically approved and risks assessed by the ethics committee of the University of Lincoln.

## 3 Results

### 3.1 Study with pig liver microsomes using LC-MS

Initially, LC-MS was used for all studies of pig liver microsomes to determine the possible metabolites. Mephedrone was incubated with an in-house prepared pig liver microsomes under the specified conditions and after termination of the metabolic process samples were centrifuged, filtered, and injected onto the LC-MS system. In this study, two metabolites, namely, hydroxytolymephedrone produced by hydroxylation of the methyl group attached to the aromatic ring, and nor-dihydro mephedrone produced by a two-step *N*-demethylation and reduction of the ketone moiety were monitored as illustrated in Figure 1. The proposed structures of the detected metabolites were determined from the fragments present in the respective mass spectra and according



**Figure 1:** Suggested phase I metabolic pathway of mephedrone adapted from published data for the metabolism of mephedrone and similar drugs (top). A proposed present metabolic pathway through the identified metabolites of mephedrone utilizing LC-MS (bottom): (1) mephedrone, (2) hydroxytolyl-mephedrone, (3) nor-dihydro mephedrone, and (\*) undetected intermediates.

to the general known routes (shown in Figure 1 top). Negative controls were used to verify the absence of these metabolites in the absence of these drugs. As seen in Figure 1 (bottom), the suggested metabolic pathway

provides different routes to detoxification by making the molecules more soluble: using hydroxylation to produce hydroxytolyl-mephedrone, by reducing the carbonyl group to an alcohol and *N*-demethylation to modify or

reduce the hydrophobicity by eliminating methyl groups from the molecule.

Spectra of the identified metabolites of mephedrone are illustrated in Figure 2. Figure 2a shows the characteristic masses for mephedrone ( $m/z$  177, 160) confirming the presence in the metabolic pool. As seen in Figure 1, one suggested metabolite is hydroxytolyl-mephedrone, in which two characteristic ions ( $m/z$  160, 177) can be seen in the mass spectra of Figure 2b, confirming its presence. Figure 2c also shows the characteristic mass ( $m/z$  166) for the *N*-demethylation to produce nor-dihydro mephedrone. Many of the masses and processes imply a loss of water as seen in Figure 2.

In a similar way to that performed for mephedrone, two metabolites were identified for MXE using the animal model: one metabolite formed by *O*-demethylation and the other metabolite formed by the reduction of the ketone moiety to the corresponding alcohol, confirming the metabolic routes for MXE already found in the literature for some of the metabolites (Figure 3a). The reported metabolic pathway of ketamine (for comparison and reference) and the proposed one for MXE are illustrated in Figure 3a and b, respectively. Apart from the differences in chemical structure because of the presence of Cl and a shorter alkyl group in the amine group in ketamine, the rest of the molecule is very similar. A metabolic pathway can be expected with similar processes (but not identical) for both drugs. In our study, dihydro-MXE (Figure 3c, compound 2) and nor-MXE (Figure 3c, compound 3) confirmed our hypothesis (note the loss of the methyl group occurs differently through *O*-demethylation and *N*-demethylation).

The mass spectra of MXE and the produced metabolites are illustrated in Figure 4. Figure 4a shows the characteristic masses for MXE ( $m/z$  247, 203 and 175) with some typical fragmentation indicated in the figure. As for Figure 3, one of the suggested metabolites was nor-MXE, produced by *O*-methylation, which had three characteristic ions ( $m/z$  233, 189 and 161) in the metabolic pool as shown in Figure 4b. Figure 4c also shows the characteristic masses ( $m/z$  249, 205) for the reduction of MXE to produce dihydro-MXE as suggested in Figure 3c.

### 3.2 Study of HepaRG™ human cell line using GC-MS

It is necessary to compare the metabolism obtained through animal studies with *in vitro* human studies to confirm whether the metabolic routes are similar. A new peak was identified by studying the chromatograms

of mephedrone after incubation with human HepaRG™ cell lines (Figure 5). The fragmentation pattern may suggest that the new peak is related to the parent drug and related to methcathinones, with structural change affecting the amine group. *N*-demethylation is a likely pathway for metabolism of mephedrone to produce this metabolite, which was found to be nor-dihydro mephedrone in the previous pig liver microsome study using LC-MS (Figure 2). The fragmentation pattern is shown in Figure 5b and shows the fragments from the peak observed at 6.24 min are compatible with a cathinone. However, due to the higher fragmentation achieved in the GC-MS it was not possible to identify either the molecular mass ( $m/z$  165) or the MH+ for nor-dihydro mephedrone. However, given the fact that the mephedrone molecule was identified at a different retention time, as shown in Figure 5a, we need to speculate this new peak is one of the expected metabolites.

In comparison, MXE showed no reliable peaks corresponding to the reported metabolites after incubation with HepaRG™ and GC-MS analysis.

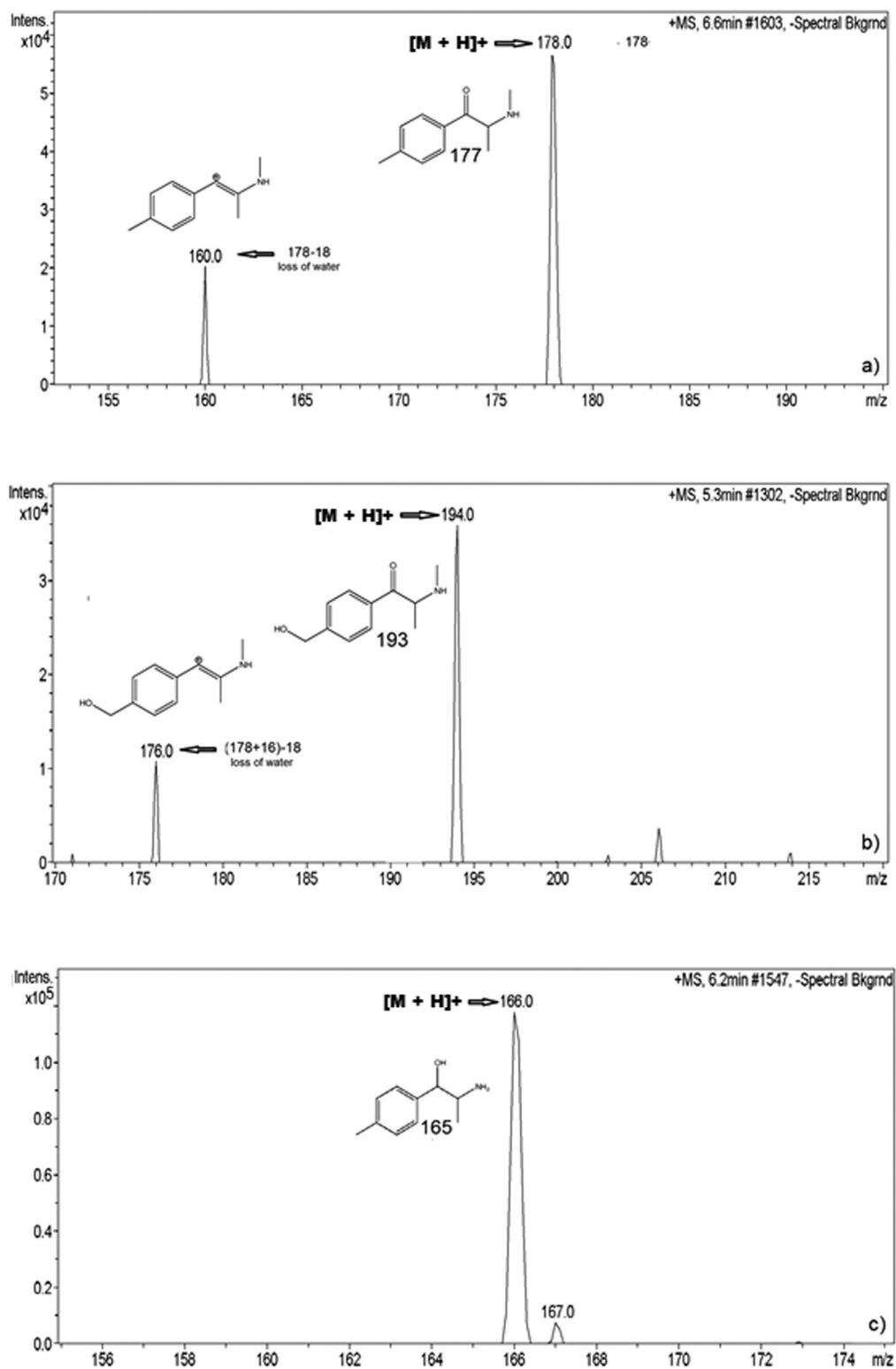
### 3.3 Study with pooled human hepatocytes

In another study, mephedrone showed a continuous decrease in drug concentration with HepaRG™ cell lines over time, while MXE showed a sharp decrease in drug concentration followed by an increase.

For mephedrone, the drug concentrations relative to the primary drug concentration dropped to an average of 37% (32–44%) after 90 min of incubation with HepaRG™ and then there was another decrease down to an average of 12% (9–18%) after 24 h. In comparison, drug concentrations relative to the primary drug concentration for MXE dropped to an average of 52% (45–58%) after 90 min of incubation, but then it increased to an average of 74% (64–84%) after 24 h (Figure 6). This sudden increase might be related to cellular apoptosis and the breaking of the cellular membrane releasing all the internal contents of unchanged drug.

### 3.4 Cell death studies for mephedrone and MXE

For cytotoxicity study using HepaRG™ cells, the data were collected from three independent experiments using 11 different concentrations of each drug in the range of

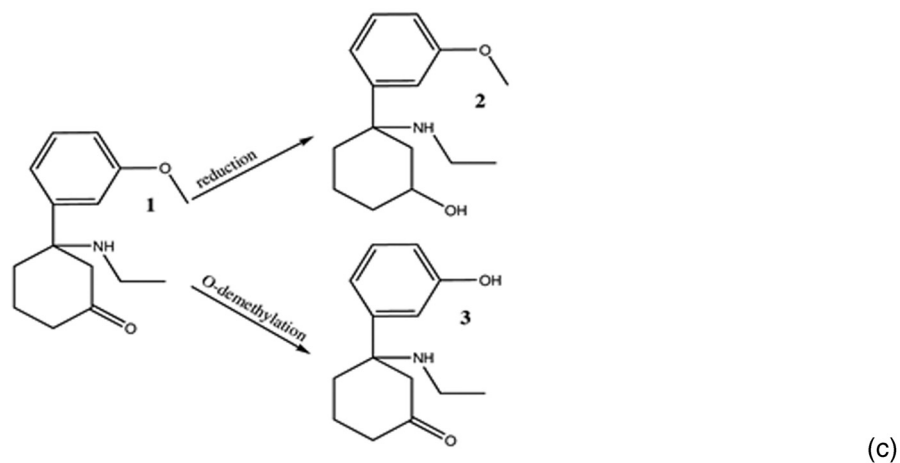
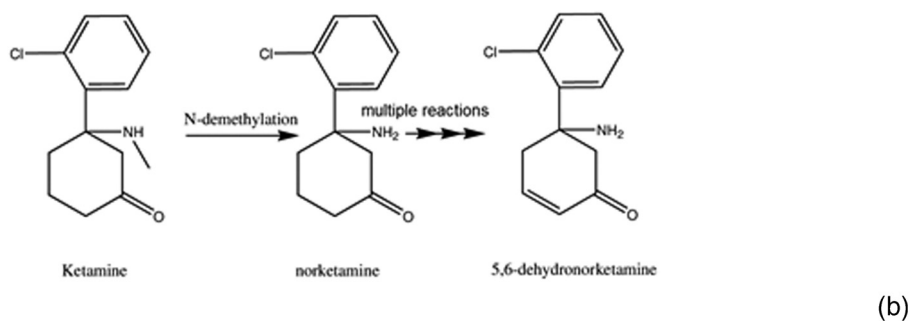
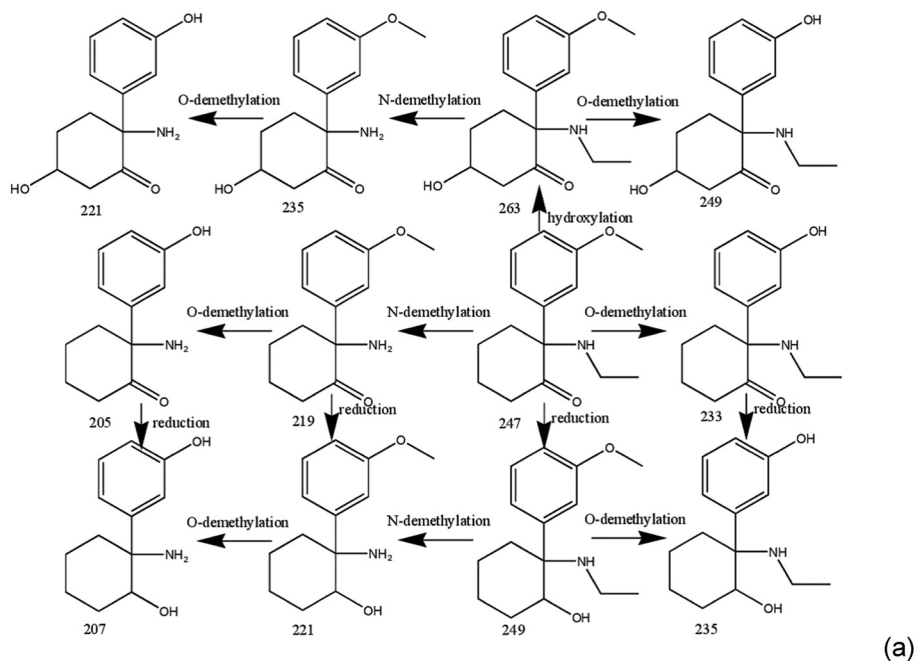


**Figure 2:** LC-MS data of (a) mephedrone and (b) a metabolite produced by *in vitro* metabolism of mephedrone, in the hydroxylation step: hydroxytolyl-mephedrone. It also presents (c) a metabolite produced by a two-step process of reduction and demethylation: nor-dihydromephedrone.

$4 \times 10^{-2}$  to 16 mM. The collected data, i.e. about the percentage of cell death, were normalized, where the blanks

were considered as having zero percentage cell death. The potency of the drug to cause the effect is evaluated

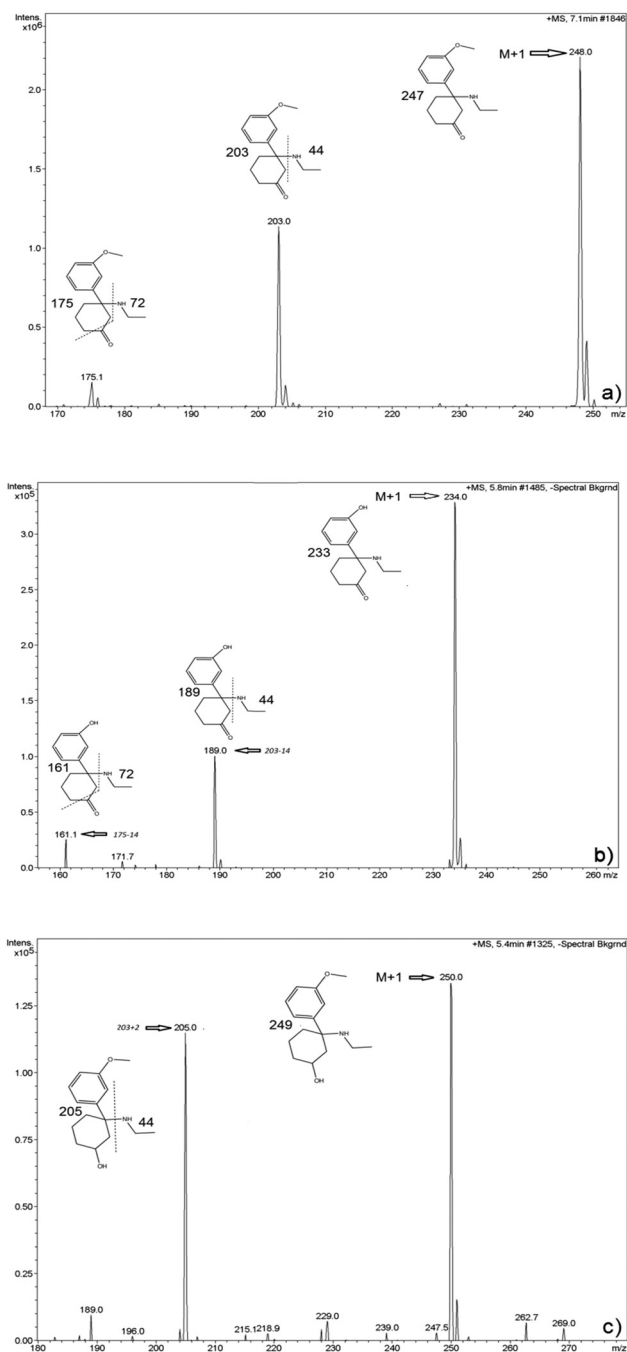




**Figure 3:** (a) Suggested phase I metabolic pathway for MXE (extrapolated from published data), (b) metabolic pathway of ketamine, and (c) the present proposed metabolic pathway of MXE, where (1) represents MXE, (2) dihydro-MXE, and (3) nor-MXE.

by  $EC_{50}$  value, which is defined as “the concentration of the agonist required to provoke a response halfway

between the baseline and maximal response” [29]. In the current part of the work, the agonist is one of the



**Figure 4:** LC-MS data. (a) Mass spectra information for MXE with characteristic  $m/z$  ratios for the molecule at 247, 203, and 175; (b) mass spectra information for nor-MXE produced by *O*-demethylation with characteristic  $m/z$  ratios at 161, 189, and 233; and (c) dihydro-MXE produced by reduction of the ketone moiety with characteristic  $m/z$  ratios at 205 and 249.

selected NPSs and the provoked response is the percentage of cell death.

The collected data were plotted as percentage of cell death normalized to maximum response versus concentration, and the resultant normalized data were analysed

using curve fitting with non-linear regression best-fit approach using GraphPad Prism version 6.00 for Windows, GraphPad Software, La Jolla California USA. The graph for all drugs showed increase in the response with increasing concentration (Figure 6).

All tested and selected NPSs showed reproducible response that is dependent on concentration, where increasing the concentration increases the percentage of cell death. Within the concentration range used, mephedrone and MXE showed nearly similar average maximal percentage cell death of about 84% and 78%, respectively. Under the specified condition (see materials and methods) and within the specified concentration range ( $4 \times 10^{-2}$  to 16 mM), MXE showed the most potent effect with an  $EC_{50}$  value of 0.3211 mM (79  $\mu$ g/mL). For 4-methyl methcathinone, the  $EC_{50}$  value was 0.6297 mM (111  $\mu$ g/mL; Figure 7).

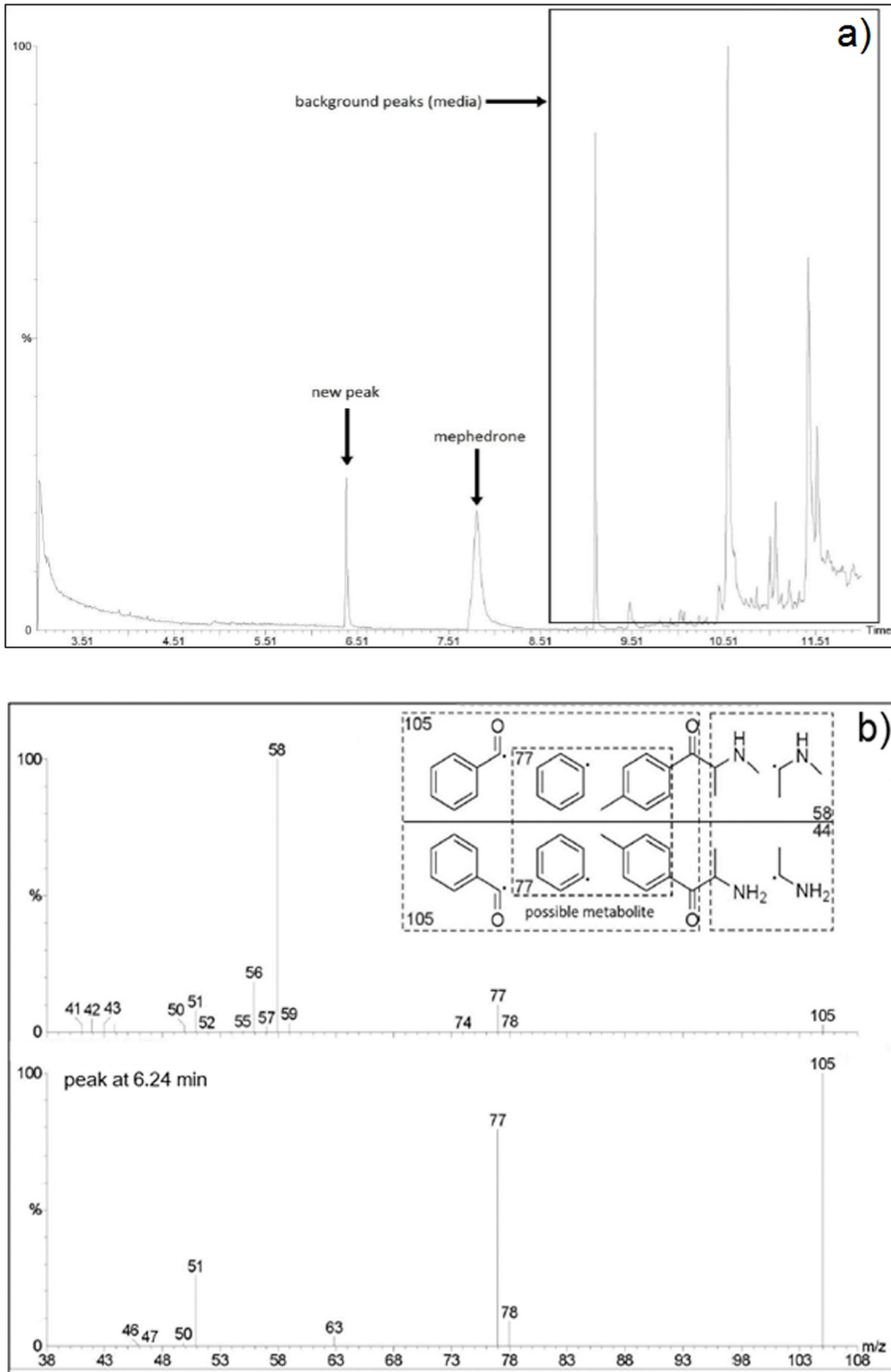
The calculated molarity values were converted into the equivalent SI to compare with the available reported toxic values through *in vitro*, post-mortem, or clinical samples. Equivalent concentrations were 111  $\mu$ g/mL and 79  $\mu$ g/mL for mephedrone and MXE, respectively (Table 1).

## 4 Discussion

### 4.1 Study of pig liver microsomes

For mephedrone, a previous study of the *in vivo* metabolism suggested a phase I metabolic pathway, whereby the drug is metabolized by one or more steps of hydroxylation, demethylation, and reduction [12]. This study identified two main metabolites, hydroxytolyl-mephedrone and nor-dihydro mephedrone, being consistent with the previously identified metabolites for mephedrone in urine [10], and the general metabolic pathways of cathinone derivatives [30]. Meyer *et al.* [12] concluded that phase II metabolic pathways are also involved in the metabolism of mephedrone through sulphonation or glucuronidation of the hydroxytolyl-mephedrone and its demethylated form. The results presented in Figure 1 confirmed these findings and reaffirmed the previously reported metabolic pathway but also confirmed the validity of our metabolic system for the production of metabolites.

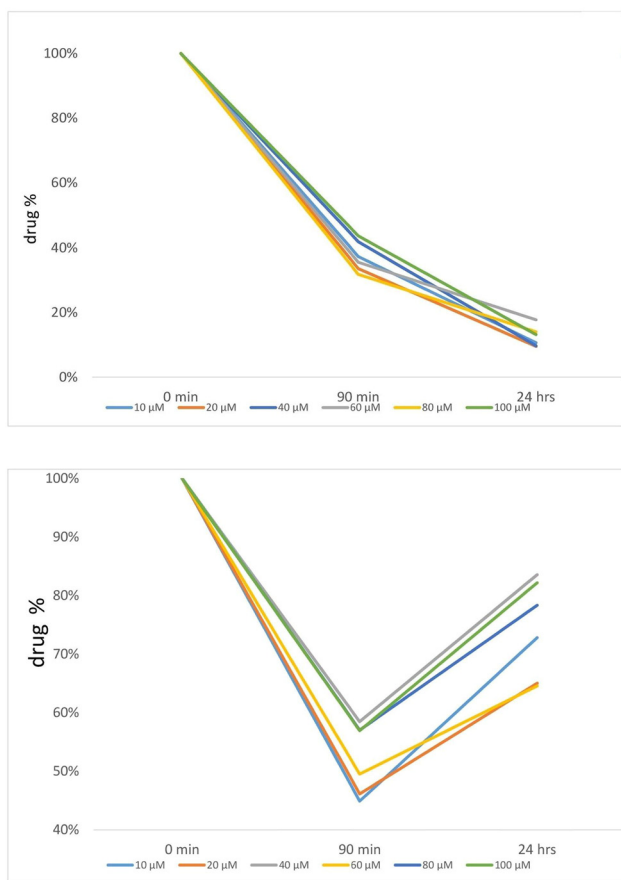
Similarly, the metabolites observed for MXE in our study is similar to other published data and metabolic studies previously published for ketamine [24]. As MXE can be structurally related to ketamine, a similar



**Figure 5:** Sample chromatogram (a) and mass spectra (b) peak appearing at 6.24 min from samples of mephedrone after incubation with HepaRG™ compared to mephedrone.

metabolic strategy for demethylation can be suggested to explain the way the body may eliminate these drugs.

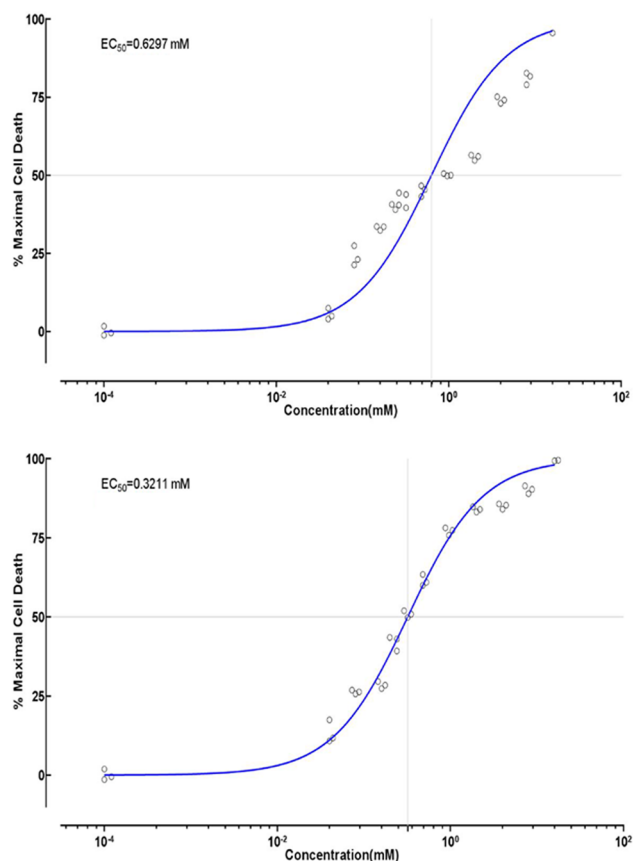
Ketamine is metabolized through *N*-dealkylation to norketamine followed by the hydroxylation of norketamine



**Figure 6:** Relative drug concentrations of selected NPS to the primary drug concentration after 90 min and 24 h of incubation with HepaRG™. Top: mephedrone. Bottom: methoxetamine.

at different locations and the formation of 5,6-dehydronorketamine. In the case of ketamine, the same metabolites are observed *in vitro* as well as *in vivo* in humans and animals [31,32]. This highly suggests that chemically related drugs might use the same enzymatic systems in humans and animals. Meyer *et al.* [12] utilized GC-MS for *in vivo* studies and detection of MXE metabolites in human and rat urine. They concluded that MXE may be metabolized through phase I and phase II enzymatic systems. Phase I enzymatic reactions involve *N*-demethylation, *O*-demethylation, and hydroxylation or a combination of these metabolic steps. It was concluded through their study also that phase II metabolic pathways are involved in the metabolism of MXE through sulphonation or glucuronidation of most of these metabolites [19]. In Menzies *et al.* [24], different phase I and II metabolites were identified, including the *O*-demethylation of MXE described here. However, in this study, not all metabolites could be detected *in vitro* and the metabolite formed by reduction, dihydro-MXE, was not described.

Top: mephedrone, Bottom: methoxetamine



**Figure 7:** Normalized cell death percentage of HepaRG cells induced by selected NPS 48 h after incubation under specified conditions. Top: mephedrone. Bottom: methoxetamine.

This metabolite, to our knowledge, has not yet been described in the literature.

In our study, LC-MS analysis was used to determine which metabolite may be present in the metabolic studies and to determine whether any of these could be identified using GC-MS analysis. For both drugs, metabolites of the demethylation pathway were identified by LC-MS; and due to their chemical nature, they are more likely to be also identified by GC-MS. As for the hydroxylation pathway, these metabolites are likely to be not too volatile and polar and less likely to be identified by GC-MS analysis, even with the aid of derivatization. Therefore, the HepaRG™ cell study focused on the demethylation pathway for GC-MS analysis.

## 4.2 Study with HepaRG™ human cell line

Since the previous study of mephedrone using LC-MS showed the presence of both hydroxytolyl-mephedrone

**Table 1:** MTT of selected NPS summary: mephedrone and MXE

Drug	Max cell death <sup>a</sup> (%)	EC <sub>50</sub> <sup>b</sup> (mM)	Equivalent (µg/mL)	Reported toxic (µg/mL) <sup>c</sup>
Mephedrone	84	0.6297	111.0	0.5–22
MXE	78	0.3211	79.00	NA

<sup>a</sup> Max death cell induced under the specified condition and within the specified range ( $4 \times 10^{-2}$  to  $1.6 \times 10^1$  mM). <sup>b</sup> EC<sub>50</sub> is the concentration required to cause cell death a halfway between the baseline and maximal response. <sup>c</sup> Reported toxic values through *in vivo*, post-mortem, or clinical samples.

and nor-dihydro mephedrone as metabolites, it was logical to assume that only nor-dihydro mephedrone or other metabolites produced by demethylation is likely to be detected in the HepaRG™ study using GC-MS, as these compounds are the result of at least one step of *N*-demethylation and may therefore be volatile enough with the help of derivatization to be visible in GC-MS. Hydroxytolyl-mephedrone is the result of hydroxylation and therefore is too polar to be analysed in a GC-MS even with the aid of derivatization. GC-MS was chosen as the analytical technique as it is more common in forensic laboratories, and we aimed to demonstrate the potential versatility of this technique for the identification of novel metabolites in human cell lines. The demethylated metabolite was detected for mephedrone using HepaRG™ human cell line and GC-MS after derivatization as shown in Figure 5.

The absence of these demethylated compounds, not detected for MXE in GC-MS, should not be interpreted as they were not produced in the metabolic system. Instead, it should be interpreted that these metabolites were not volatile enough for detection using GC-MS even with BSTFA derivatization as MXE is already a fairly polar compound, even before metabolism takes place. This may be of interest to forensic laboratories, where sometimes the presence of metabolites is used to confirm the intake of a specific drug. For MXE, this information may not be applicable when using only GC-MS of biological samples, whereas mephedrone's metabolite is detectable.

### 4.3 Pooled human hepatocytes

The structural difference in mephedrone and MXE may explain their differences in physicochemical properties, which explains why these drugs behaved differently in biological systems in terms of, for example, transcellular transport, protein affinity, and metabolism. Protein binding is one of the major components that may affect drug's efficacy, as it is only the free unbound fraction of

the drug that is available to be transported to the intracellular space for further biological action, e.g. metabolism.

For both drugs, mephedrone and MXE, a decrease in the concentration of the parent drug in the incubation media is observed with time. This can be associated with the intake by the cell. In both cases, the intake after 90 min is around 70% for mephedrone (leaving 30% in the media) and 55% for MXE (leaving 45% in the media). In the case of mephedrone, this intake continues up to 24 h and later with an absorption of nearly 90%. However, the observed increase in MXE concentration after 24 h of incubation following the sharp decrease after 90 min could be due to cell death and some lysis, which may cause some of the intracellular content of MXE to pool into the extracellular space. This general trend of lower available extracellular drug concentration is a strong evidence that drugs are being used or consumed by the cells, most likely through metabolism. Nearly 60–80% (depending on the concentration) is found back in the media, which approximates well to the percentage of cell death produced by MXE. This would suggest that most of the cells dying suffered a process of lyses when treated with MXE in contrast with the behaviour observed in mephedrone where the cellular wall remained intact after death (in the period of our study: 24 h).

### 4.4 Cell death

Mephedrone is an amphetamine-related drug with little data available about its cytotoxic effects. However, amphetamines, cathinones, and related drugs have been studied, both *in vitro* and *in vivo*. Cytotoxicity caused by amphetamines mainly affects the liver, the organ most at risk in general for drug-related toxicity and specifically amphetamines [33]. No similar data are available for MXE, the ketamine analogue belonging to the arylcyclohexylamine, or other drugs of the same class, for comparison.

Compared to the published data about cell death cytotoxic effect and other cytotoxic effects, the reported  $EC_{50}$  values in our study for mephedrone, 0.3211 mM, are lower than the reported  $EC_{50}$  for amphetamines, cathinones, and related drugs in *in vitro* studies, where the  $EC_{50}$  values ranged between 0.74 and 5.26 mM [28]. The values for  $EC_{50}$  obtained in the case of mexothetamine were calculated as 0.6297 mM. In this case, no literature data on MXE or related drugs for *in vitro*  $EC_{50}$  values are available for comparison.

The obtained  $EC_{50}$  values in this part of the work are many folds higher than the reported toxic peak concentration in either clinical-intoxicated patients' samples or post-mortem samples. The reported concentration of mephedrone, as an example, in post-mortem biological samples in four fatalities in Scotland, ranged between 0.50 and 22  $\mu\text{g/mL}$  [29]. The obtained  $EC_{50}$  value of 0.6297 mM for mephedrone, which is equivalent to 111  $\mu\text{g/mL}$ , is about 5–22 times more than the reported values in biological samples. In fact, it has been reported that the tissue levels of amphetamine-related drugs can be up to 18–30 times higher than the blood concentrations. This discrepancy between *in vitro* and *in vivo* data, in case of amphetamines and related drugs, is partially due to their low protein-binding affinity, which makes their diffusion from plasma into tissues more favourable. In addition, post-mortem samples are often from victims who have received emergency care in their pre-mortem intoxicated interval [34].

None of the selected NPS yielded 100% cell death. However, mephedrone and MXE caused at least the death of 73–84% of the cells. The limitations to this study are based on the response of the cells under these specific stress conditions. Other cytotoxic effects need to be explored to elaborate about the toxic effects of NPS in general.

## 5 Conclusion

The laboratory prepared pig liver microsomes were used as the animal model, and the results of the metabolism were tracked using an LC-MS as separation and identification technique. In the case of mephedrone and MXE, it would suggest that these drugs have similar (not identical) metabolic pathways to transfer them to more soluble compounds. Two metabolites, namely, dihydro-MXE and nor-MXE, for MXE are presented in this study, produced by *O*-demethylation and by the reduction of the ketone moiety, where, to the best of our knowledge, the

presence of none of these metabolites has been previously suggested in literature.

When looking at *in vitro* studies using the human HepaRG™ cells, only the demethylation pathway for mephedrone could be confirmed using GC-MS. GC-MS was employed to illustrate the facilities that may be available at commercial laboratories. However, due to this, it should be noted that the other metabolites previously described may not be detectable. Yet, GC-MS was able to identify a metabolite for mephedrone, which could in turn help law enforcement and emergency services with the identification of suspected ingestion of this NPS. This point has also been proven by other authors as commented in the introduction.

In terms of cytotoxicity *in vitro*  $EC_{50}$  values for mephedrone and MXE were reported for the first time. These values for mephedrone and MXE were 0.3211 and 0.6297 mM, respectively.

Considering the limitations, the *in vitro* study of the metabolism of the designer drugs is a promising approach for the prediction of the toxicological and clinical profile of the newly emerging drugs in the early stages of their appearance in the market and could be used as a preliminary step before developing analytical methods for the study of designer drugs and their metabolites.

**Funding:** The authors appreciate the financial support to the main author by Mutah University (Jordan) for the current research work as a part of a funded PhD scholarship.

**Authors' contribution:** M. S. was involved in data curation, formal analysis, funding acquisition, investigation, methodology, software, validation, visualization, and writing original draft; I. M. contributed to conceptualization, data curation, formal analysis, investigation, methodology, resources, software, validation, visualization, writing review, and editing; M. B. was in charge of project administration, supervision, writing review, and editing; R. C. was involved in project administration, supervision, writing review, and editing; M. V. contributed to formal analysis, software, visualization, writing original draft, writing review, and editing; and J. G. R. was in charge of conceptualization, data curation, formal analysis, funding acquisition, methodology, project administration, resources, software, supervision, visualization, writing original draft, writing review, and editing.

**Conflict of interest:** Authors declare no conflict of interest.

**Data availability statement:** All data generated or analysed during this study are included in this published article.

## References

- [1] Gibbons S, Zloh M. An analysis of the “legal high” mephedrone. *Bioorg Med Chem Lett*. 2010;20(14):4135–9.
- [2] Camilleri A, Johnston MR, Brennan M, Davis S, Caldicott DGE. Chemical analysis of four capsules containing the controlled substance analogues 4-methylmethcathinone, 2-fluoro-methamphetamine, alpha-phthalimidopropiophenone and *N*-ethylcathinone. *Forensic Sci Int*. 2010;197(1–3):59–66.
- [3] Peters FT, Meyer MR. *In vitro* approaches to studying the metabolism of new psychoactive compounds. *Drug Test Anal*. 2011;3(7–8):483–95.
- [4] Tice RR, Austin CP, Kavlock RJ, Bucher JR. Improving the human hazard characterization of chemicals: A Tox21 update. *Env Health Perspect*. 2013;121:756–65.
- [5] Ammann D, McLaren JM, Gerostamoulos D, Beyer J. Detection and quantification of new designer drugs in human blood: Part 2 – designer cathinones. *J Anal Toxicol*. 2012;36(6):381–9;Cosbey SH, Peters KL, Quinn A, Bentley A. Mephedrone (methylmethcathinone) in toxicology casework: A northern Ireland perspective. *J Anal Toxicol*. 2013;37(2):74–82.
- [6] Lusthof KJ, Oosting R, Maes A, Verschraagen M, Dijkhuizen A, Sprong AGA. A case of extreme agitation and death after the use of mephedrone in The Netherlands. *Forensic Sci Int*. 2011;206(1–3):e93–5.
- [7] Maskell PD, De Paoli G, Seneviratne C, Pounder DJ. Mephedrone (4-methylmethcathinone)-related deaths. *J Anal Toxicol*. 2011;35(3):188–91.
- [8] Home Office. The psychoactive substances bill; 2015.
- [9] Meyer MR, Wilhelm J, Peters FT, Maurer HH. Beta-keto amphetamines: Studies on the metabolism of the designer drug mephedrone and toxicological detection of mephedrone, butylone, and methylone in urine using gas chromatography – Mass spectrometry. *Anal Bioanal Chem*. 2010;397(3):1225–33.
- [10] Pedersen AJ, Reitzel LA, Johansen SS, Linnet K. *In vitro* metabolism studies on mephedrone and analysis of forensic cases. *Drug Test Anal*. 2013;5(6):430–8.
- [11] Corazza O, Schifano F, Simonato P, Fergus S, Assi S, Stair J, et al. Phenomenon of new drugs on the Internet: the case of ketamine derivative methoxetamine. *Hum Psychopharmacol*. 2012;27:145–9.
- [12] Meyer MR, Bach M, Welter J, Bovens M, Turcant A, Maurer HH. Ketamine-derived designer drug methoxetamine: Metabolism including isoenzyme kinetics and toxicological detectability using GC-MS and LC-(HR-)MSn. *Anal Bioanal Chem*. 2013;405(19):6307–21.
- [13] Olesti E, Farré M, Papaseit E, Krotonoulas A, Pujadas M, de la Torre R, et al. Pharmacokinetics of mephedrone and its metabolites in human by LC-MS/MS. *AAPS J*. 2017;19(6):1767–78.
- [14] Olesti E, Pujadas M, Papaseit E, Pérez-Mañá C, Pozo ÓJ, Farré M, et al. GC-MS quantification method for mephedrone in plasma and urine: Application to human pharmacokinetics. *J Anal Toxicol*. 2017;41(2):100–6.
- [15] Pozo OJ, Ibáñez M, Sancho JV, Lahoz-Beneytez J, Farré M, Papaseit E, et al. Mass spectrometric evaluation of mephedrone *in vivo* human metabolism: Identification of phase I and phase II metabolites, including a novel succinyl conjugate. *Drug Metab Dispos*. 2015;43(2):248–57.
- [16] Olesti E, Farré M, Carbó ML, Papaseit E, Perez-Mañá C, Torrens M, et al. Dose-response pharmacological study of mephedrone and its metabolites: Pharmacokinetics, serotonergic effects, and impact of CYP2D6 genetic variation. *Clin Pharmacol Ther*. 2019;106(3):596–604.
- [17] Papaseit E, Pérez-Mañá C, Mateus JA, Pujadas M, Fonseca F, Torrens M, et al. Human pharmacology of mephedrone in comparison with MDMA. *Neuropsychopharmacology*. 2016;41(11):2704–13.
- [18] Papaseit E, Olesti E, de la Torre R, Torrens M, Farré M. Mephedrone concentrations in cases of clinical intoxication. *Curr Pharm Des*. 2017;23(36):5511–22.
- [19] EMCDDA. Report on the risk assessment of MT-45 in the framework of the council decision on new psychoactive substances; 2014. Available from <http://emcdda.europa.eu/system/files/publications/1865/TDAK14006ENN.pdf>
- [20] Zawilska JB. Methoxetamine – A novel recreational drug with potent hallucinogenic properties. *Toxicol Lett*. 2014;230(3):402–7.
- [21] Morris H, Wallach J. From PCP to MXE: A comprehensive review of the non-medical use of dissociative drugs. *Drug Test Anal*. 2014;6(7–8):614–32.
- [22] Hofer KE, Grager B, Müller DM, Rauber-Lüthy C, Kupferschmidt H, Rentsch KM, et al. Ketamine-like effects after recreational use of methoxetamine. *Ann Emerg Med*. 2012;60(1):97–9.
- [23] Menzies EL, Hudson SC, Dargan PI, Parkin MC, Wood DM, Kicman AT. Characterizing metabolites and potential metabolic pathways for the novel psychoactive substance methoxetamine. *Drug Test Anal*. 2014;6(6):506–15.
- [24] Nakamura Y, Sugihara K, Sone T, Isohe M, Ohta S, Kitamura S. The *in vitro* metabolism of a pyrethroid insecticide, permethrin, and its hydrolysis products in rats. *Toxicology*. 2007;235(3):176–84.
- [25] Achour B, Barber J, Rostami-Hodjegan A. Cytochrome P450 pig liver pie: Determination of individual cytochrome P450 isoform contents in microsomes from two pig livers using liquid chromatography in conjunction with mass spectroscopy. *Drug Metab Dispos*. 2011;39(11):2130–4.
- [26] Pigatto MC, Alves De Lima MDC, Galdino SL, Pitta IDR, Vessecchi R, Assis MDD, et al. Metabolism evaluation of the anticancer candidate AC04 by biomimetic oxidative model and rat liver microsomes. *Eur J Med Chem*. 2011;46(9):4245–51.
- [27] Hill JR. *In vitro* drug metabolism using liver microsomes. *Curr Protoc Pharmacol* [Internet]. 2003 Dec [cited 2004 February 15];23(1):7.8.1–11. Available from <http://www.ncbi.nlm.nih.gov/pubmed/24687737>
- [28] Motulsky, H, Christopoulos, A. Fitting dose-response curves. Fitting models to biological data using linear and nonlinear regression: A practical guide to curve fitting. Oxford: Oxford University Press; 2004. p. 256–95

- [29] Kelly JP. Cathinone derivatives: A review of their chemistry, pharmacology and toxicology. *Drug Test Anal.* 2011;3(7–8):439–53.
- [30] Portmann S, Kwan HY, Theurillat R, Schmitz A, Mevissen M, Thormann W. Enantioselective capillary electrophoresis for identification and characterization of human cytochrome P450 enzymes which metabolize ketamine and norketamine *in vitro*. *J Chromatogr A.* 2010;1217(51):7942–8.
- [31] Schmitz A, Thormann W, Moessner L, Theurillat R, Helmja K, Mevissen M. Enantioselective CE analysis of hepatic ketamine metabolism in different species *in vitro*. *Electrophoresis.* 2010;31(9):1506–16.
- [32] Da Silva DD, Carmo H, Lynch A, Silva E. An insight into the hepatocellular death induced by amphetamines, individually and in combination: The involvement of necrosis and apoptosis. *Arch Toxicol.* 2013;87(12):2165–85.
- [33] Da Silva DD, Carmo H, Silva E. The risky cocktail: What combination effects can we expect between ecstasy and other amphetamines? *Arch Toxicol.* 2013;87(1):111–22.
- [34] Torrance H, Cooper G. The detection of mephedrone (4-methylmethcathinone) in 4 fatalities in Scotland. *Forensic Sci Int.* 2010;202(1–3):e62–3.