

Chapman University

## Chapman University Digital Commons

---

George L. Sillman First World War  
correspondence

CAWL Archives: First World War

---

6-25-1917

### 1917-06-25, George to Grace

George L. Sillman

Grace E. Sillman

Follow this and additional works at: [https://digitalcommons.chapman.edu/glsillman\\_correspondence](https://digitalcommons.chapman.edu/glsillman_correspondence)

---

#### Recommended Citation

Sillman, George L. and Sillman, Grace E., "1917-06-25, George to Grace" (1917). *George L. Sillman First World War correspondence*. 2.

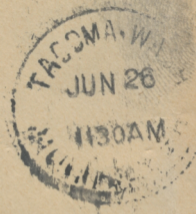
[https://digitalcommons.chapman.edu/glsillman\\_correspondence/2](https://digitalcommons.chapman.edu/glsillman_correspondence/2)

This Letter is brought to you for free and open access by the CAWL Archives: First World War at Chapman University Digital Commons. It has been accepted for inclusion in George L. Sillman First World War correspondence by an authorized administrator of Chapman University Digital Commons. For more information, please contact [laughtin@chapman.edu](mailto:laughtin@chapman.edu).



SERGT. GEORGE L. SILLMAN  
MACHINE GUN CO. 2ND WASH. INF.

American  
Lake  
Wash.



Miss Grace E. Sillman  
Spokane  
Wash.  
c/o Sillman Hotel.



SERGT. GEORGE L. SILLMAN  
MACHINE GUN Co. 2ND WASH. INF.

June 25

Dear Grace,

I guess you have  
begun to ~~think~~ think I was  
never going to answer  
your letters - Well I  
am.

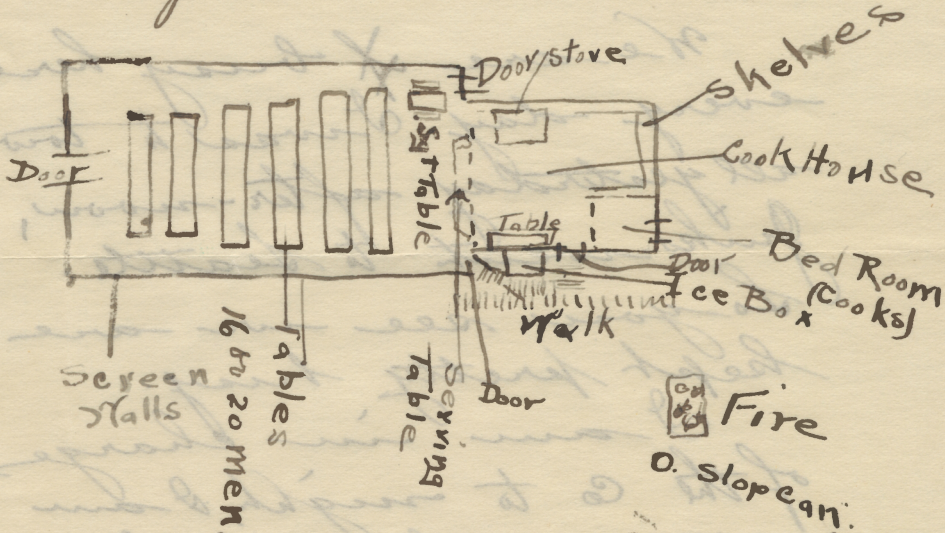
We are ~~so~~ busy here  
every day. I was to town  
all yesterday after-noon,  
Jinks went to Seattle.

So you see we are  
kept pretty busy.

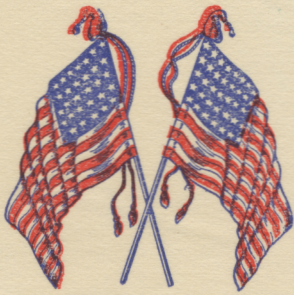
I am in charge  
of the Co to night, I am  
setting up here he hired  
a desk - getting complaints  
etc and telling that fellows

what to do. One man just came up and asked why he was K. P. Fitcher police to-morrow and I told him he ought to know why and to take his medicine and shut up.

We have a new mess house now with six big tables for squads and one small one for the sqts.



Maybe you can make out this drawing. It is late and I can



SERG. GEORGE L. SILLMAN  
MACHINE GUN CO. 2ND WASH. INF.

<sup>3</sup>  
Hardly hold my  
eyes open.

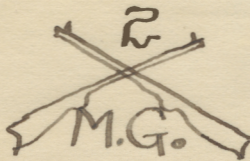
I will have to go  
out side and  
walk around a  
little I guess.

We had school to-night on  
map making and reading.  
It is quite interesting. School  
every-other night.

Well I guess I close for  
I went to sleep over this  
letter once.

Your Loving Brother

George



What does this  
mean?



And this?