

South Dakota State University

**Open PRAIRIE: Open Public Research Access Institutional  
Repository and Information Exchange**

---

South Dakota Art Museum Newsletters and Publications

---

Fall 2006

**South Dakota Art Museum, Fall/Winter 2006**

South Dakota State University

Follow this and additional works at: [https://openprairie.sdstate.edu/sdam\\_news](https://openprairie.sdstate.edu/sdam_news)

---

Fall/Winter 2006

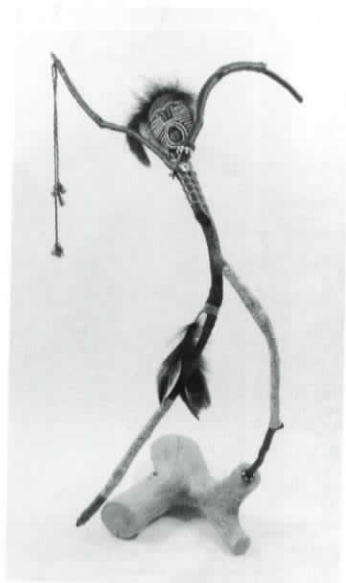
# SOUTH DAKOTA *Art* MUSEUM

Medary Avenue at Harvey Dunn Street • Brookings, South Dakota 57007-0899

## J. "SAM" MCGINNIS AND MARK W. MCGINNIS

July 24, 2006 – November 5, 2006

Mark and J. "Sam" McGinnis live and work in the Black Hills of South Dakota, creating distinctive works of art that reflect decades of stylistic and technical development. More than twenty of Sam's hand-embroidered and embellished mixed-media sculptures and ninety acrylic-on-paper paintings from Mark's *The Cloud Messenger* series are currently featured in this unique joint exhibition.



J. "Sam" McGinnis,  
*Raven Woman Dancer*

J. "Sam" McGinnis' work features hand embroidery of three-strand cotton thread on linen or satin using cottonwood, shells, stones, quills, feathers, beads, and other materials as embellishment. "For twenty-five years, various forms of embroidered objects have manifested in my studio," Sam explains. "They began with two-dimensional framed images of abstract

South Dakota landscapes. Then came

embroidered jewelry using many techniques and a variety of materials--stones, beads, feathers, shells, porcupine quills, and horsehair. Assembling small sculptures evolved next." Sam's exhibited work

skillfully combines the materials and techniques she has utilized in the past with sticks, rocks, and other materials to create three-dimensional assemblages that evoke an immediate sense of the natural environment from which the artist's work arises. Her pieces have been exhibited in museums and galleries in California, Colorado, Minnesota, Nebraska, and New Mexico.

Mark McGinnis, professor emeritus of art at Northern State University in Aberdeen, South Dakota, is renowned for his collections of paintings and accompanying spiritually themed essays.

The paintings in *The Cloud*



Mark W. McGinnis,  
*Cloud Messenger 9*

*Messenger* series were inspired by the ancient Sanskrit poem *Meghaduta*, composed by India's greatest Sanskrit poet, Kalidasa. "What drew me to the poem so strongly was its sumptuous description of the natural world," writes the artist. "Its vivid narrative of the land, sky, trees, plants, flowers, animals, and birds created paintings in my mind on the first reading." A fusion of Mark's study of 18th- and 19th-century Kangra painting in India and his own stylistic development, the ninety paintings exhibited bring to life Kalidasa's classic verse and inspire interest in the literature and culture of India.

# Featured Exhibitions

## Mick Sheldon And Steve Schrepferman

November 14, 2006 - April 15, 2007

Artist Reception on April 13, 2007, 4:30pm - 7:00pm

Gallery Talk at 5:30pm



Mick Sheldon,  
*Man's Best Friend Helps Me,  
In Disguise, Destroy the  
One-Eyed God From Hell*

MICK SHELDON is an artist, humorist, satirist, and teacher. Born in the 1950s in Reno, Nevada, Sheldon received a Bachelor of Fine Arts degree from the University of Nevada in 1979. He later earned a Master of Arts in Fine Arts from California State University, Sacramento, and a Master of Fine Arts from the University of California, Davis. Though he has worked with all of the traditional media, he primarily makes hand-colored woodblock prints from birch ply, rag paper, oil-based ink, and watercolors. He has carved and printed over 275 wood, linoleum, and plastic block prints.

Each image Sheldon creates is hand carved into Birch plywood, printed black on white rag paper, and run over with a van rather than a press. "I run over them with a van because I don't have a press and I don't want to borrow a key to go to any art department," he clarifies. The prints are left to dry, then painted with various watercolor media. The blocks are carved with small hand gouges that require constant sharpening, and carving requires forty to sixty hours to complete. The most time consuming part of Sheldon's process, however, is thinking out the stories and drawing them onto the blocks. "I spend most of my studio time working on the composition of each piece and on the cramming of the six-foot human figure into the three-foot space," he comments. "I go to great lengths to include lots of happenstance stuff into the picture plane." His woodblock prints incorporate highly dramatic color, cascading

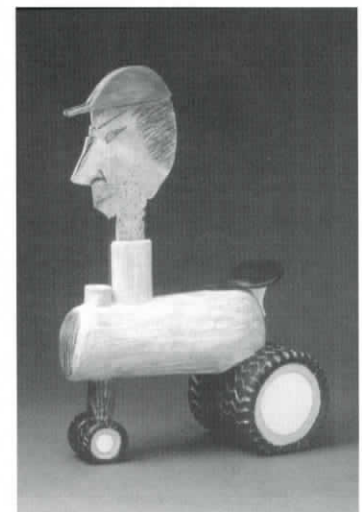
diagonals, swirling black outlines, and dark humor to activate, provoke, and draw in viewers. "The humor serves as a hook and an access point for anyone who sees them. Few can understand the reasons for making pictures, but everyone understands humor."

Sheldon currently makes his home in Yolo, Colorado, and teaches art at Sierra College and American River College. His vibrant, edgy art has been exhibited nationwide.

STEVE SCHREPFERMAN was born and raised in Denver, Colorado, where his visual perception was influenced by the region's contrasting landscape of mountains and plains. In 1976 he received a Bachelor of Arts degree in Art and History from Lewis and Clark College in Portland, Oregon, and later a Master of Fine Arts in Ceramics from the State University of New York. While attending graduate classes in New York, he was able to work with a number of nationally and internationally known ceramic artists.

The challenge of working with ceramic materials has always fascinated Schrepferman. Learning to throw forms on the potter's wheel was his first challenge; what to do with the symmetrical vessels that emerged from the wheel became his second. Preferring to shape the vessels into more interesting asymmetrical forms, Steve developed a unique construction technique that combines secondary materials with clay forms. In his work, he strives to reveal the physical and spiritual energy trapped within the vessels and sculptures he creates. "This is the same energy that we see working in the forces of nature," Schrepferman asserts. "The same energy that contributed to the origins of the universe, that holds us in place on the planet, and that sparks the beginning of a human life."

Steve makes his home in Cody, Wyoming with his wife, RaeLene, and their two sons, Paul and Doug. His work has been featured in exhibitions in New Jersey, Pennsylvania, and throughout the western United States.



Steve Schrepferman,  
*Tracteur*



## Yan Zhou Xu: The Situation Of Life

October 17, 2006 - April 16, 2007

Artist Reception on October 20, 2006, 4:30pm - 7:00pm

Gallery Talk at 5:30pm

The paintings of Yan Zhou Xu, a native of China who now resides in Colorado, reveal the complex influences of his own rich Chinese heritage and the radical mix of cultures he finds in the United States. His paintings push the boundaries of traditional realism and delve into the surreal. His ability to portray ordinary life with vibrant colors and provocative insight has attracted worldwide recognition. Yan Zhou Xu's objective is to depict subject matter that creates its own reasonable balances between the rational and the irrational, between reality and fantasy. He combines normally disparate objects to illustrate his views of the generation gap and the disharmony and dissolution that occur among evolving and differing political, economic, cultural, and natural systems.

Born in Qingdao, China, Yan Zhou Xu received a Master of Fine Art degree from Tulane University in New Orleans, Louisiana. He has taught in the Shandong Institute of Art and the Central Institute of Fine Arts in China, Luther College at the University of Regina in Canada, and Newcomb College in the United States. A major figure in the school of rural realistic painting in China and a master of contemporary realism, his work is exhibited in museums and galleries around the world.



Yan Zhou Xu, *The Drought*



Martin John Garhart, *Voices, Voices, Voices*

## Martin John Garhart: Matters Of The Heart

January 12, 2007 - April 15, 2007

Artist Reception on April 13, 2007, 4:30pm - 7:00pm

Gallery Talk at 5:30pm

Martin John Garhart's *Matters of the Heart* is an ongoing series of paintings that explores the people, places, things, and events that bring purpose and meaning to our lives. It is an exhibition about human existence, revealed in fragments with pictures and words. Each painting is a collection of separate parts—mental landscapes, physical environments, and verbal expressions, which are assembled by the frame—and meaning is left to each viewer to establish in their own terms. "At the most basic level," Garhart explains, "I am simply trying to make interesting and beautiful things that both give and ask for a response."

Garhart received a Bachelor of Arts degree from South Dakota State University in 1969. He also holds a Master of Arts degree from West Virginia University and a Master of Fine Art from Southern Illinois University. In 2003, he received an Honorary Doctorate of Fine Art from Kenyon College in Gambier, Ohio. His paintings have been featured in many exhibitions and galleries throughout the United States.

# Current and Upcoming Exhibitions

## PERMANENT COLLECTIONS

**February 21, 2006 – February 4, 2007**

**Harvey Dunn: The Original Donation**

To commemorate South Dakota State University's 125th anniversary, this exhibition features the forty-two paintings that comprise Harvey Dunn's original donation to the University.

**August 15, 2006 – April 8, 2007**

**Shunk, Evenson, and Dudeck Collections of Native American Art**

This exhibition of Native American art brings together many outstanding pieces from three of the South Dakota Art Museum's major collections. On display are many exquisite clothing items, jewelry pieces, tools, and traditional objects crafted by Sioux, Ojibwa, Iroquois, Navajo, Crow, Menomini, and Hopi artisans.

**November 10, 2005 – October 29, 2006**

**Marghab Linen Collection**

Eighty linens representing thirty-two designs from the Museum's Marghab Linen Collection are currently on display in this exhibit. Designed by Emile and Vera Way Marghab on the Island of Madeira from 1933-1980, each linen was meticulously hand embroidered on the finest fabrics from Ireland and Switzerland.



Paul Goble, *The Girl Who Loved Wild Horses*

**March 1, 2006 – March 4, 2007**

**Paul Goble: Original Illustrations from *The Girl Who Loved Wild Horses***

Featured in this exhibition are a series of stunning watercolor-and-ink illustrations from Goble's book for children, *The Girl Who Loved Wild Horses*, which won the 1979 Caldecott Medal for most distinguished American picture book.

**November 7, 2006 – September 9, 2007**

**Marghab Linen Collection: Flora and Fauna**

Displayed in this installation of linens from the Museum's Marghab Linen Collection are many motifs depicting realistic or stylized flora and fauna. Designs on view include Butterfly, Rose Arbor, Wild Duck, Morning Glory, Peonies, Under the Sea, and Calla Lily.

## SPECIAL EXHIBITIONS

**June 14, 2006 – September 30, 2006**

**Oscar Howe**

Fusing traditional Dakota and modern Euro-American artistic techniques, Howe established himself as one of the most significant modernist painters in the United States. Nineteen of his unique paintings are currently on exhibit in the Museum's South Dakota Artist gallery, including *Horses*, *Dakota Medicine Man*, and *Blanket Dancer*.

**July 24, 2006 – November 5, 2006**

**J. "Sam" McGinnis and Mark W. McGinnis**

Mark and J. "Sam" McGinnis live and work in the Black Hills of South Dakota, creating distinctive works of art that reflect decades of stylistic and technical development. Exhibited in this joint installation are ninety acrylic-on-paper paintings from Mark's *The Cloud Messenger* series and more than twenty of Sam's hand-embroidered and embellished mixed-media sculptures. *Exhibit sponsored by Marilyn and Max DeLong.*



**August 1, 2006 – September 30, 2006**

***Through the Needle's Eye*, 18th National Exhibit of the Embroiderer's Guild of America**

*Through the Needle's Eye* embodies the primary principle of the Embroiderers' Guild of America, which is to foster the art of needlework and to encourage a high standard of design and technique in embroidery. On exhibit are fifty-four distinguished and outstanding examples of this benchmark.

**October 6, 2006 – January 7, 2007**

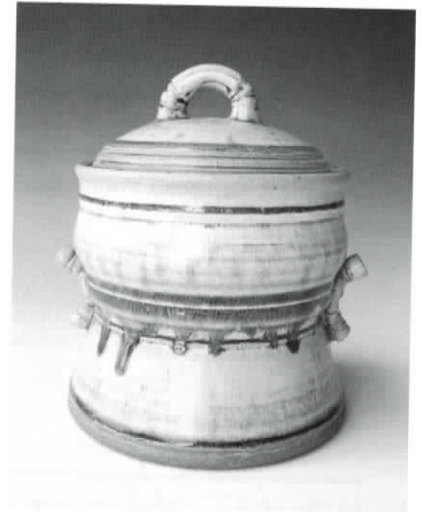
**South Dakota Artist Series: Tim Vogl and Mark Shekore**

Artist Reception

October 20, 2006, 4:30pm – 7:00pm

Gallery Talk at 5:30pm

The South Dakota Artist Series exhibits contemporary visual art by artists living and working in South Dakota. The intent of the Artist Series is to promote current trends in the visual arts, and the Museum takes great pleasure in exhibiting some of the state's and the region's most creative artists. This exhibition features pottery by ceramic artist Mark Shekore and a selection of paintings from Tim Vogl's *The Farmer* series. *Artist reception sponsored by Slumberland, Brookings.*



Mark Shekore, *Stoneware Jar #1*

**October 17, 2006 – April 16, 2007**

**Yan Zhou Xu: *The Situation of Life***

Artist Reception

October 20, 2006, 4:30pm – 7:00pm

Gallery Talk at 5:30pm

The paintings of Yan Zhou Xu, a native of China who now resides in Colorado, reveal the complex influences of his own rich Chinese heritage and the radical mix of cultures he finds in the United States. His paintings push the boundaries of traditional realism, delving into the surreal, and his ability to portray ordinary life with vibrant colors and thought-provoking insight has attracted worldwide attention. *Artist reception sponsored by Slumberland, Brookings.*

**November 14, 2006 – April 15, 2007**

**Mick Sheldon and Steve Schrepferman**

Artist Reception

April 13, 2007, 4:30pm-7:00pm

Gallery Talk at 5:30 pm

The works of artist Mick Sheldon and ceramicist Steve Schrepferman share a vibrant, bold quality that is readily observed. Featured in this exhibit are the quirky abstract pottery of Steve Schrepferman and the keenly humorous hand-colored woodblock prints and oil-on-canvas paintings of Mick Sheldon.

**January 12, 2007 – April 15, 2007**

**South Dakota Artist Series: Martin John Garhart**

Artist Reception

April 13, 2007, 4:30pm – 7:00pm

Gallery Talk at 5:30pm

Showcased in this installation of the South Dakota Artist Series are works from Martin John Garhart's *Matters of the Heart*, a series of multiple-picture paintings that reflect the experience of life and explore the phenomena that bring us purpose and meaning.

# Calendar of Events

## October 2006

### 6 Beaded Bangle Workshop

**Instructor:** Ann Rohlf

*Create a bracelet using a wide variety of glass, bone, and wooden beads. All skill levels.*

**Time:** 6:00pm – 8:00pm

**Location:** Museum Multipurpose Room

**Cost:** \$20 members, \$25 non-members

**Supplies:** Class fee includes all materials, instruction, and tool use.

### 7 Twilled Wall Pouch Basket Workshop

**Instructor:** Ann Rohlf

*Learn the craft of Japanese twill weaving and create a hanging wall pouch using space-dyed reeds. All skill levels.*

**Time:** 10:00am – 5:00pm

**Location:** Museum Multipurpose Room

**Cost:** \$32 members, \$40 non-members

**Supplies:** Class fee includes all materials, instruction, and tool use. Please bring a sack lunch.

### 16-20 Midwest World Fest Residency Featuring Mexican Musical and Dance Ensemble Chuchumbé

Chuchumbé will be conducting a week-long residency in the Brookings area that focuses on musicality, the creation of instruments, and conversations between students and artists about culture. Outreach activities will include a community reception, master classes with local school and university students, community workshops, and a public performance.

### 19 Public Performance by Mexican Musical and Dance Ensemble Chuchumbe

Join Chuchumbe for a thoroughly entertaining evening of music and dance from the *son jarocho* tradition.

**Time:** Performance begins at 7:00 pm.

Box Office opens at 6:15 pm.

**Location:** Performing Arts Center, SDSU Campus

**Cost:** \$3 children under 18, \$8 adults, Free for SDSU students. Sorry, no advanced ticket sales.

### 20 Artist Reception and Gallery Talk

**Yan Zhou, Tim Vogl, and Mark Shekore Exhibits**

**Artist Reception:** 4:30pm - 7:00pm

**Gallery Talk:** 5:30pm

**Cost:** Free and Open to the Public

*Artist reception sponsored by Slumberland, Brookings*



Stained Glass Workshop, 2005

### 21 Hemp Jewelry Workshop

**Instructor:** Nina Rohlf

*Weave your own hemp necklace or choker and adorn it with Czech-glass pony beads and glass pendants. All skill levels.*

**Time:** 12:00pm - 4:00pm

**Location:** Museum Multipurpose Room

**Cost:** \$20 members, \$25 non-members

**Supplies:** Class fee includes all materials, instruction, and tool use.

### 24 SDAM Guild Meeting

**Time:** 9:30am

**Location:** Museum Multipurpose Room

**Program:** "The Beauty of Korean Bojagi" - Mary Haug, Associate Professor, SDSU English Department

### 28 Stained Glass Workshop

**Instructors:** Jerry and Judie DeWald

*Craft a lovely Tiffany-style art panel (8"×10") with stained-glass artists Jerry and Judie DeWald. All skill levels.*

**Time:** 10:00am - 4:30pm

**Location:** Museum Multipurpose Room

**Cost:** \$85 members, \$92 non-members

**Supplies:** Class fee includes all materials, instruction, and tool use. Please bring a sack lunch.

It is important that participants wear long-sleeved shirts, closed-toed shoes, and long pants or skirts.



Lynn Verschoor,  
Stained Glass Workshop, 2005





## November 2006

- 8-9 **South Dakota Agri-Cultural Tourism Conference**  
**Location:** Sioux Falls Holiday Inn City Center, Sioux Falls, SD  
*Please contact Lynn Verschoor at 605-688-4279 for more information regarding conference schedule and session topics.*

- 28 **SDAM Guild Meeting**  
**Time:** 9:30am  
**Location:** Museum Multipurpose Room  
**Program:** "Art of the West" – Mac Harris, Director, South Dakota Agricultural Heritage Museum



Torleiv Kampen, Spinning, Traditional Textiles Program

## December 2006

- 5 **SDAM Guild Festival of Trees Christmas Tea**  
**Time:** 9:30am  
**Location:** Community Cultural Center, 524 4th St., Brookings

## January 2007

- 23 **SDAM Guild Meeting**  
**Time:** 9:30am  
**Location:** Museum Multipurpose Room  
**Program:** "Conserving Photographs" - Stephen VanBuren, Archivist, H.M. Briggs Library  
**Supplies:** Members, please bring several old photographs to this meeting.

## March 2007

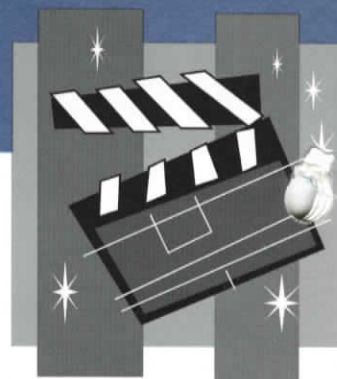
- 27 **SDAM Guild Meeting**  
**Time:** 9:30am  
**Location:** Museum Multipurpose Room  
**Program:** "Pop Art" - Fatih Benzer, Assistant Professor, SDSU Visual Arts Department

## April 2007

- 13 **Artist Reception and Gallery Talk**  
**Martin John Garhart, Mick Sheldon, and Steve Schrepferman Exhibits**  
**Artist Reception:** 4:30pm - 7:00pm  
**Gallery Talk:** 5:30pm  
**Cost:** Free and Open to the Public  
*Join us in the Museum's galleries to meet print artist Mick Sheldon, painter Martin John Garhart, and ceramic artist Steve Schrepferman.*
- 
- 12 **Printmaking Workshop**  
**Instructor:** Mick Sheldon  
*Please contact Sherry Korthals at 605-688-4313 for more information regarding workshop location, schedule, and fees.*



# Documentary Film Series



## Clarence Denton Documentary Film Series, 2006-2007

**Location:** All films will be shown in the South Dakota Art Museum's Alumni Auditorium.

**Time:** All films begin at 7:00pm. Alumni Auditorium opens for seating at 6:30pm.

**Cost:** Free and open to the public.

### **Tuesday, October 3, 2006**

#### ***Breaking the Silence: Truth and Lies in the War on Terror (2003)***

Award-winning journalist John Pilger investigates the discrepancies between American and British claims for the "War on Terror." A compelling documentary that provides an important foundation for understanding how the wars in Afghanistan and Iraq began. 52 minutes. Directed by Steve Connelly and John Pilger.

### **Thursday, October 12, 2006**

#### ***Unconquering the Last Frontier (2002)***

Chronicles the ninety-year-long struggle of Washington State's Elwha Klallam tribal community to restore the Elwha River's ecosystem and salmon fisheries, which were destroyed when Olympic Power and Development erected a dam on the Elwha River in 1910. Portrays the dignity and wisdom of the Lower Elwha Klallam in the face of long-standing racism and political ill-will. 57 minutes. Produced by Robert Lundahl.

### **Wednesday, October 18, 2006**

#### ***Busting Out (2005)***

Explores the history and politics of breast obsession in America, including such topics as breast cancer, breastfeeding, and body image. A humorous and insightful film capturing multigenerational and multicultural viewpoints that will challenge both women and men to develop healthier perspectives. 57 minutes. Directed by Francine Strickwerda and Laurel Spellman Smith.

### **Wednesday, November 1, 2006**

#### ***And the Dish Ran Away with the Spoon (1994)***

Documents the domination of Caribbean television by French and U.S. programs, illuminating how this programming propagates a distorted worldview that alienates Caribbean viewers from their own cultural heritage. An intense and fascinating investigation into the power of television. 49 minutes. Directed by Christopher Laird and Anthony Hall.

### **Wednesday, January 31, 2007**

#### ***The Forest for the Trees (2006)***

Follows environmental activist Judi Bari's twelve-year struggle to

clear her name after she was falsely arrested as a terrorist in 1990. An inspiring and thought-provoking film that provides unparalleled insight into environmental politics. 57 minutes. Directed by Bernadine Mellis.

### **Wednesday, February 7, 2007**

#### ***The Good War and Those Who Refused to Fight It (2002)***

Recounts the story of the 40,000 American conscientious objectors who, in World War II, challenged the limits of democracy by refusing to shoulder weapons. A compelling account of the heroism and patriotism of American pacifists. 57 minutes. Produced by Judith Ehrlich and Rick Tejada-Flores.

### **Wednesday, February 21, 2007**

#### ***Another World is Possible (2002)***

Introduces viewers to the dialogue that took place among the 51,000 attendees of the 2002 World Social Forum in Porto Alegre, Brazil. An inspirational documentary providing a glimpse into the transnational movement that is uniting global advocates for democracy, human rights, and environmental protection. 24 minutes. Directed by Mark Dworkin and Melissa Young.

### **Wednesday, February 28, 2007**

#### ***McLibel (2005)***

Divulges the inside story of how two ordinary British citizens took on the McDonald's Corporation . . . and won. An engrossing and often hilarious David-and-Goliath tale. 85 minutes. Directed by Franny Armstrong.

### **Wednesday, March 14, 2007**

#### ***Who Shot My Brother? (2006)***

Filmmaker German Gutierrez details his quest to find the gunman who attempted to assassinate his brother, exposing the root of violence in his native Columbia. A beautifully filmed political documentary that takes a courageous look at what Colombia has become. 52 minutes. Directed by German Gutierrez.

### **Wednesday, March 21, 2007**

#### ***30 Frames a Second: The WTO in Seattle (2000)***

Details photojournalist Rustin Thompson's personal odyssey through the streets of Seattle during the controversial protests triggered by the 1999 WTO Ministerial Conference. A polished and provocative film providing a raw, on-the-spot record of the WTO demonstrations. 72 minutes. Directed by Rustin Thompson.

**For more information on specific film titles, please visit the Bullfrog Films website at <http://www.bullfrogfilms.com>.**

**Sponsored in memory of Clarence Denton, the South Dakota Art Museum, the SDSU Communication Studies and Theatre Department, and the SDSU Student Film Society.**



## Chuchumbé, Mexican Music And Dance Ensemble

Midwest World Fest, a program of the regional arts agency Arts Midwest, is a global arts, education, and outreach performing arts program designed to provide inspiring arts enrichment while instilling appreciation for diversity and encouraging acceptance of others and their cultures. In a two-year cycle initiated in the fall of 2005, four ensembles representing four unique cultures began touring selected communities throughout the nine-state region served by Arts Midwest. As part of this tour, Chuchumbé, a traditional music and dance ensemble from Veracruz, Mexico, will arrive in Brookings on Sunday, October 15, to conduct a week-long community and schools residency.

Since 1991, Chuchumbé has been entertaining and educating audiences across the globe with their unique performances of music and dance. The ensemble has an established reputation for exploring the roots of *son jarocho*, a musical tradition influenced by Spanish, African, and indigenous styles. Their concerts feature a variety of traditional instruments, and performances showcase a traditional form of percussive dance known as *zapateado*, which is executed upon a wooden platform.

Lynn Verschoor, Director of the South Dakota Art Museum, is excited to take part in this celebration of art and culture. "The caliber of talent Chuchumbé brings to Brookings is amazing," she says. "These expressive, powerful performers capture their diverse Mexican culture through festive songs and dance." While Brookings typically does not have the resources to draw and host international talent like Chuchumbé, Arts Midwest offsets the cost and handles the coordination of the Midwest World Fest tour in order to offer communities throughout the Midwest this rich global arts experience.

"Our goal is to make lasting impressions on the communities that host the Midwest World Fest," says David Fraher, Executive Director of Arts Midwest, "therefore, our musicians do not simply perform one evening and leave. Our ensembles conduct week-long residencies, in which they perform at schools and at community venues." As part of that commitment, Chuchumbé is scheduled to conduct school workshops in the Brookings public schools during the week of October 16 – 20. Arts Midwest has created comprehensive curriculum materials for various grade levels, and classroom learning experiences will focus on musicality, the creation of instruments, and conversations between students and artists about Mexican culture, language, and history. Additional outreach activities will include a community reception, master classes with local public school and university students, community workshops, and an evening public performance on Thursday, October 19, 2006.



Next Spring, Midwest World Fest will bring the Israeli ensemble Esta to Brookings. Esta embraces the traditional and contemporary sounds of Israel and the Balkan area, and they will be performing on the campus of South Dakota State University on May 3, 2007.

Midwest World Fest is made possible with leadership support from the National Endowment for the Arts, the William Randolph Hearst Foundation, and the 3M Foundation. Major support is generously provided by The Japan Foundation, Amstore Corporation, Hanon McKendry, Verizon, the Consulate General of Israel to the Midwest in concert with the Ministry for Foreign Affairs of Israel, and the *Muskegon Chronicle*. Additional support is offered through the WKK Fund of Dorothy A. Johnson, the Muskegon Jewish Community, the Muskegon Rotary Club, the SDSU Student Association, and the Brookings Performing Arts Center. Midwest World Fest is a program of Arts Midwest in partnership with its nine member state arts agencies.

## Chuchumbé in Concert

**Thursday, October 19, 2006**

PERFORMING ARTS CENTER, SDSU CAMPUS

**Performance begins at 7:00pm.**

Box Office opens at 6:15pm.

Sorry, no advanced ticket sales.

Tickets: \$3 children under 18, \$8 adults

Free for SDSU students

**Call 605-688-5423 for more information.**



## 35th Anniversary Celebration

The South Dakota Art Museum Guild recently celebrated its 35th anniversary with a dynamic presentation given by members Mary Fiedler and Naomi Gilkerson. The event included lively conversation and a PowerPoint presentation that highlighted Guild programs and incorporated images of past and present members. Throughout the program, Guild members reminisced and shared anecdotes of their most memorable experiences from the past thirty-five years. Diane Anderson recalled the Art in the Schools program that was in place for nearly twenty years, and long-time Guild member and former president Phyllis Bartling shared her memories of working with the Museum's first director. Phyllis also spoke of her experiences serving on the Museum's Board of Trustees.

The anniversary celebration not only recapped the ambitious history of the Guild's existence but also was a reminder of the vital role Guild members have played in the success of the South Dakota Art Museum over the past thirty-five years. Looking forward to a long and equally successful future, Mary concluded the presentation with the question, "Where do I sign-up?" **Those interested in Guild membership should contact Mary Fiedler at 605-692-6943.**



SDAM Guild Members Mary Fiedler and Naomi Gilkerson



## Volunteer Spotlight: Dee Kirkbride

Dee Kirkbride has been a dedicated volunteer at the South Dakota Art Museum since the early 1980s. During her years of service to the Museum, she has been Guild President twice, first in 1991 and again in 2001. As a volunteer, Dee works at the reception desk, has been involved in the Art in the Schools program, and serves as a docent for

school groups. Dee enjoys her work at the Museum. "It is a very clean, motivating environment in which to work," she says. "The Museum is such an active, growing place. There is always something going on."

Dee studied art while attending college and received a Bachelors degree in Art from Drury College in Springfield, Missouri. In addition to her Museum Guild affiliation, Dee is an active member of the Brookings Fine Arts Club and the Brookings Fiberworks Guild. In her spare time, she enjoys gardening and fishing, as well as spinning, weaving, and working with wool.

## UPCOMING GUILD MEETINGS AND EVENTS.

All Guild meetings and events will begin at 9:30 a.m. in the Museum's Multipurpose Room, unless otherwise noted.

**Tuesday, October 24**

**SDAM Guild Meeting**

"The Beauty of Korean Bojagi" – Mary Haug, Associate Professor, SDSU English Department

**Tuesday, November 28**

**SDAM Guild Meeting**

"Art of the West" – Mac Harris, Director, South Dakota Agricultural Heritage Museum

**Tuesday, December 5**

**SDAM Guild "Festival of Trees" Tea**

Time: 9:30am

Location: Community Cultural Center, 524 4th St., Brookings

**Tuesday, January 23**

**SDAM Guild Meeting**

"Conserving Photographs" – Stephen VanBuren, Archivist, Hilton M. Briggs Library  
*Members, please bring several old photographs to this meeting.*

**Tuesday, March 27**

**SDAM Guild Meeting**

"Pop Art" – Fatih Benzer, Assistant Professor, SDSU Visual Arts Department

**Tuesday, May 8**

**SDAM Guild Spring Brunch and Annual Meeting**

Program by Dorothy Morgan, Brookings artist

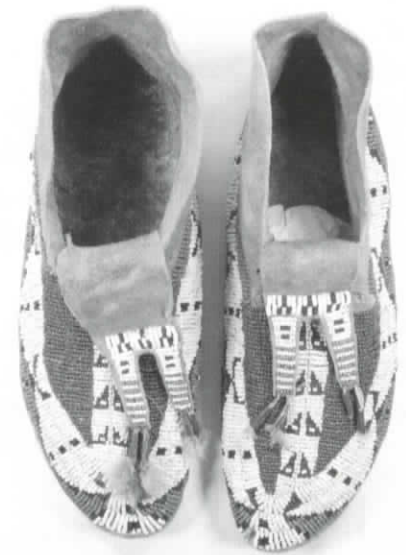
## Native American Collection Stewardship Project

As an integral part of its mission as a steward of South Dakota's art treasures, the South Dakota Art Museum collects, preserves, and exhibits art in order to increase access to—and appreciation of—the visual arts. A focus of that stewardship is the Museum's commitment to the preservation and conservation of the objects in its collections. In 2005, the Museum received a mentorship grant from the National Endowment for the Humanities and the Midwest Art Conservation Center to secure guidance for the preservation of its Native American Collection. The Museum has since implemented the Native American Collection stewardship project to address the historical, cultural, educational, and conservation concerns that have been identified within the Collection.

There are nearly 1,000 objects in the thirteen individual collections that comprise the Museum's Native American Collection. These artifacts embody the creative spirit and culture of Native Americans from several different geographical regions. The majority of these objects, which date from the late 19th century, represent tribes from South Dakota, North Dakota, Nebraska, and Minnesota, including the Eastern Sioux, Ojibwa, Dakota, Lakota, Nakota, and Sioux tribes. The Collection also includes objects representing the Navajo, Hopi, Pueblo, and Chippewa tribes.

A major goal of the stewardship project is to construct individually designed storage mounts that will provide adequate support and protection for the objects in the Native American Collection. To achieve this objective, the Museum has formed the Treasure Tuesday group. The work of this volunteer group commenced with a day-long training workshop, which included sessions on the proper handling of artifacts, construction of supportive storage mounts, measuring and recording of object information, and special handling of Native American objects. Since October 2005, Treasure Tuesday volunteers have dedicated nearly 300 hours to the project, and they have constructed over 100 individual storage mounts for the pottery in the Collection. The work of this group has recently expanded to include a research branch, the Thursday Thinkers, whose goal is to document all of the objects in the Museum's Native American Collection.

For more information on joining the Treasure Tuesday or Thursday Thinkers groups, please contact Lisa Scholten, Curator of Collections, at 605-688-6702.



Moccasins, Sioux, circa 1925.



### Intern Spotlight: Susan Thompson

Susan Thompson was selected to serve as this summer's Museum intern. Her ten-week internship involved the creation of a long-range plan for the Ben Reifel Native American Collection and extensive research on its sixteen objects. Susan's project focused on properly documenting the objects in the Ben Reifel Collection and researching the personal history of South Dakota native Ben Reifel, the first Plains Native American to serve in the United States Congress. Her work was documented in a PowerPoint presentation given at the Museum on August 31, 2006.

Susan, a non-traditional student majoring in history at SDSU, is from the Colman/ Flandreau area. She is married and has four children and two grandchildren. She enjoys traveling, gardening, visiting museums, and participating in politics. The

Museum staff would like to thank Susan for her dedicated and outstanding work during this internship.

The Ben Reifel Collection will be featured along with Oscar Howe's works in the Museum's next Native American collection exhibition, which opens in April 2007.



# Museum Store

The South Dakota Art Museum Store offers an array of unique, beautifully crafted products from numerous regional artists. The Store has one of the area's largest regional book selections, as well as music from regional musicians. Among our distinctive products are Marghab linens, Harvey Dunn Gicleé reproductions, Native American crafts, original paintings, pottery, jewelry, and accessories.

Our international section now offers original products from twelve countries.

## HOLIDAY SALE

Watch for our  
upcoming special  
membership holiday  
discount!

## JUST ARRIVED

Gicleé reproductions of  
Harvey Dunn's  
painting *I Am the  
Resurrection and the  
Life.*

## NEW AT THE MUSEUM STORE

- Expanded bead assortment
- Expanded children's and adult book sections
- Artwork by Betty Beer
- Crocheted jewelry by Kathy Deuschle
- Pottery by Tom Eastburn and Jerry Deuschle
- Recycled Technology jewelry by Carolyn Kettler Juvland
- New items from artists such as Greta Bodogaard and John Offutt

## South Dakota Art Museum Store

Medary Avenue at Harvey Dunn Street | Box 2250, SDSU | Brookings, SD 57007-0899

Telephone: (605) 688-5423 | Toll Free: (866) 805-7590

Online: [www.southdakotaartmuseum.com](http://www.southdakotaartmuseum.com) | Email: [sdsu.sd@sdstate.edu](mailto:sdsu.sd@sdstate.edu)



# Membership

## South Dakota Art Museum Membership Application/Renewal

### Basic Membership:

Individual	\$30
Family	\$40

### Contributing Membership:

Contributor	\$100-499
Donor	\$500-999
Supporter	\$1000-4,999
Sustainer	\$5000-9,999
Benefactor	\$10,000 & above

### Basic membership Benefits:

- 10% discount on Museum Store purchases
- 20% discount on Museum Workshops
- Subscription to SDAM newsletter and other Museum mailings
- Name recognition in newsletter

### Contributing Membership Benefits:

- All basic benefits apply
- \$100 or more - Harvey Dunn mini gicleé reproduction of *Woman at the Pump*
- \$500 or more - two bricks with inscriptions to be placed on the Museum plaza

To join, simply fill out the form below and mail it (with your check or credit card information) to the South Dakota Art Museum. Please telephone the Museum at (605) 688-5423 if you have any questions regarding membership or wish to pursue alternate ways of giving.

Volunteer opportunities are available.  
Call (605) 688-5423 for more information.

## Different ways of "giving" to the South Dakota Art Museum.

There are many ways in which supporters of the arts may give to the South Dakota Art Museum. By providing funds for public and educational programs, exhibitions, conservation, artist receptions, new acquisitions, and operational endowments, contributors can assist the Museum in fulfilling its mission. Museum Guild member Dee Kirkbride and her husband Clyde have established a fiduciary trust benefiting the Museum. This generous gift, which is deeply appreciated, is one of the many ways donors can make contributions to the Museum.

Full Name (s) \_\_\_\_\_

Address \_\_\_\_\_

City \_\_\_\_\_ State \_\_\_\_\_ Zip \_\_\_\_\_

Telephone (\_\_\_\_\_) \_\_\_\_\_

### Basic Memberships

SDSU Student	FREE
Individual	\$30.00
Family	\$40.00

(Up to two adults in one household, and their children through age eighteen.)

### Contributing Memberships

All contributing memberships include up to two adults in one household, and their children through the age of eighteen. Discounts are available for all those persons listed on the membership.

Contributor	\$100-499
Donor	\$500-999
Supporter	\$1,000-4,999
Sustainer	\$5,000-9,999
Benefactor	\$10,000 and above

**E-mail** \_\_\_\_\_

To receive e-mail updates on events, please provide your e-mail address.

Check enclosed       Charge, I wish to use:

Mastercard/Visa # \_\_\_\_\_

Expiration Date \_\_\_\_\_

Signature \_\_\_\_\_

TOTAL MEMBERSHIP \$ \_\_\_\_\_

Send application with check or credit card information to the following address:

**Membership**  
South Dakota Art Museum  
Box 2250, South Dakota State University  
Brookings, SD 57007-0899



# Thank You

## CURRENT MUSEUM MEMBERSHIPS

June 1, 2005 – July 21, 2006

### BENEFACTOR

Stan Adelstein, Rapid City, SD  
Anonymous  
Anonymous

### SUSTAINER

Phyllis and Robert Bell, De Smet, SD  
Rita and Bill Larson, Fowler, CO  
Larry and Diane Ness, Yankton, SD  
Jack and Linda Stengel, Sioux Falls, SD

### SUPPORTER

Lynn and Diane Anderson, Sioux Falls, SD  
Marilyn and Max DeLong, St. Paul, MN  
Margaret Denton, Brookings, SD  
Tim Dougherty, Sioux Falls, SD  
Friends of the Arts, Brookings, SD  
Christine Hamilton, Kimball, SD  
Virginia Harrington, Sioux Falls, SD  
George and Roberta Lohr, Littleton, CO  
David and Patricia Meyer, Brookings, SD  
Sue and Curt Wischmeier, Aberdeen, SD

### DONOR

Ruth Brennan, Rapid City, SD  
Robert Butterbrodt, St. Paul, MN  
John and Veronica Capone, Brookings, SD  
Richard and Sharon Cutler, Sioux Falls, SD  
Elmen Family Foundation, Sioux Falls, SD  
Donald and Ann Pier, Milwaukee, WI  
Mike and Pat Reger, Brookings, SD  
Duane and Phyllis Sander, Brookings, SD  
Sioux Empire Staters, Sioux Falls, SD  
Lynn Verschoor, Brookings, SD  
Linda and Larry Youngren, Brookings, SD

### CONTRIBUTOR

Ruth Alexander, Brookings, SD  
Robert and Rebecca Baer, Brookings, SD  
Judith Bailey, Mission, TX  
Marian Barnes, Reno, NV  
Duane and Norma Benton, Manhattan, KS  
Sherwood and Elizabeth Berg,  
Brookings, SD  
Joye Ann Billow, Brookings, SD  
Jill Braaten, Chicago, IL  
Bradford Brinton Memorial and Museum,  
Big Horn, WY  
Brookings Altrusa, Brookings, SD  
Vernon and Marilyn Brose,  
Selingsgrove, PA  
Avalon Byemers, Brookings, SD  
Sharon and Terry Casey, Chamberlain, SD  
Gene and Margaret Chamberlin, Ames, IA  
Walt and Marjorie Conahan,  
Sioux Falls, SD  
Margaret Denton, Brookings, SD

Jon Anne Einspahr, Brookings, SD  
Audrey Estebo and John Eaton,  
St. Paul, MN  
Merle Gunsalus, Brookings, SD  
Hannah Taylor, Harcourt, Inc.,  
Orlando, FL  
Dale and Mary Harpstead,  
East Lansing, MI  
Seham and Nadim Hassoun, Brookings, SD  
Mildred Hedrick, Kalamazoo, MI  
Arlene Hendrickson, Brookings, SD  
Esther Hunsaker, Port Orchard, WA  
Carter and Janet Johnson, Brookings, SD  
David and JoAnn Johnson, Amery, WI  
Julie and David Kappenman,  
Rapid City, SD  
Dee and Clyde Kirkbride, Brookings, SD  
Gregory and Sara Klug, Brookings, SD  
Kirk and Jane Landman, Alexandria, MN  
Lanniko Lee, Java, SD  
David and Mary Leonard, Boulder, CO  
Charles K. Lingren, Brookings, SD  
David and Linda Marquardt,  
Sioux Falls, SD  
Norm Martin, Brookings, SD  
Scott McMacken, Brookings, SD  
Bob and Peggy Miller, Brookings, SD  
James and Dorothy Morgan, Brookings, SD  
Denton Morrison, Sarasota, FL  
Josie and Stewart Moyer, Brookings, SD  
Phyllis Nelson, Valparaiso, IN  
Larry and Diane Ness, Yankton, SD  
Ella Ollenburg, Brookings, SD  
Elaine M. Olson, Brookings, SD  
Lynn Osika, Brookings, SD  
Katherine Peterson, Los Banos, CA  
Jane E. and Johnny Rasmussen,  
Sisseton, SD  
Debbie Renaas, Nunda, SD  
Liz Rezek, Sioux Falls, SD  
Donna Ritter, Brookings, SD  
Stephanie Russo, Paris, KY  
Jerry and Gail Simmons, Sioux Falls, SD  
Robert and Sharon Struble, Milwaukee, WI  
Joseph and Signe Stuart, Santa Fe, NM  
John and Maria Tapia, San Bernadino, CA  
Craig and Della Tschetter, Brookings, SD  
Gary and Sharon Van Riper, Brookings, SD  
Calvin Vaudrey, Litchfield Park, AZ  
William and Nancy Wadsworth,  
Brookings, SD  
Mason and Janie Wheeler, Brookings, SD  
Zeno Wicks III and Rozanne Savaryn  
Wicks, Brookings, SD  
Louis and Elizabeth Williams,  
Brookings, SD

### FAMILY MEMBERSHIPS

Rick and Pam Adler, Volga, SD  
Helen Lewis Aldridge, Schaumburg, IL  
David and Sheryl Arlt, Aberdeen, SD  
Patty Bacon and Richard Larson,  
Volga, SD  
Glynn and Keith Bartels, Mitchell, SD  
Lawrence and Phyllis Bartling,  
Brookings, SD  
Tom and Kay Becker, Brookings, SD  
Lisa and Peter Bergmann, Brookings, SD  
Delores Brage, Brookings, SD  
Shane and Leah Brink, Brookings, SD  
Elaine and Mike Brown, Volga, SD  
Jeff and Barbara Buettner, Sinai, SD  
Donna Campbell and Lee Frantz,  
Brookings, SD  
Robert and Jeanette Carey, Rockport, TX  
Herbert and Sydna Cheever,  
Minneapolis, MN  
Winifred Cheever, Brookings, SD  
Craig and Diane Corson, Ames, IA  
David and Pat Dartt, Omaha, NE  
Rebecca and William Daugherty,  
Brookings, SD  
Tom and Sherry DeBoer, Brookings, SD  
Sharon Distad, Brookings, SD  
Jan and David Evans, Brookings, SD  
Jerry and Mary Fiedler, Brookings, SD  
Jessie and Robert Finch, Rochester, MN  
Barbara and Van Fishback, Brookings, SD  
Jay and Bonnie Gilbertson, Brookings, SD  
B.J. and Helen Gottsleben, Brookings, SD  
Patrick Griffin, Rochester, MN  
Kevin and Amanda Hansen, Brookings, SD  
Patrick and Joanne Hart, Mankato, MN  
Jane Hegland and Steve Will,  
Brookings, SD  
Chaille Hofland, Brookings, SD  
Dennis Hopfinger, Brookings, SD  
Ernest and Mildred Huggins,  
Brookings, SD  
Gary and Joan Isenberg, Brookings, SD  
Marylka Jakubczak and Evert Van der Sluis,  
Brookings, SD  
Al and Carole Johnson, Brookings, SD  
Stephanie Johnson and Paul Rekow,  
Scottsbluff, NE  
Bob and Jean Jostad, Brookings, SD  
Robert and Phyllis Karolevitz,  
Yankton, SD  
Dan and Michele Kemp, Brookings, SD  
Al and Irene Kurtenbach, Brookings, SD  
Jay and Kathy Larson, Brookings, SD  
Harriet Lievan, Minneapolis, MN  
Ruth Manson, Brookings, SD  
Don and Nancy Marshall, Brookings, SD

Eug and Sandy McFarland,  
 Brookings, SD  
 Dan and Pam Merchant, Brookings, SD  
 David and Vanessa Merhib, Brookings, SD  
 Rick and Carolyn Merhib, Sherburn, NY  
 Harvey and Midge Mills, Brookings, SD  
 Paul and Doris Moriarty, Brookings, SD  
 Tim and Laurie Nichols, Brookings, SD  
 Boyd Obermeyer, Carmel, IN  
 Ronald and Anna-Lisa Peterson,  
 Brookings, SD  
 James and Gerda Phoenix, Rapid City, SD  
 Larry and Cathy Piersol, Sioux Falls, SD  
 Stephen and Eunice Randall,  
 Sioux Falls, SD  
 Dale and Jo Anne Reeves, Brookings, SD  
 David and Rina Reynolds, Aurora, SD  
 Fred and Ardyne Rittershaus,  
 Brookings, SD  
 Karl and Nadine Schmidt, Estelline, SD  
 Col. James T. Schnitzer, Tucson, AZ  
 Bill and Lisa Scholten, Brookings, SD  
 C.J. and L.R. Schumacher, Volga, SD  
 Mark and Peggy Shlanta, Sioux Falls, SD  
 Richard and Judy Smith, Brookings, SD  
 Marjorie Stephenson, Brookings, SD  
 Rose Steve, Oklahoma City, OK  
 John and Maria Tapia, San Bernardino, CA  
 Gene Thompson, Sioux Falls, SD  
 Robert and Mary Thompson,  
 Lindstrom, MN  
 Nancy Van Dyke, St. Louis, MO  
 Ginny and Woody Weeks, Brookings, SD  
 West Polk City Homemakers Tour,  
 Crookston, MN  
 Michael and Carol Wilson,  
 Fountain Hills, AZ

#### INDIVIDUAL MEMBERSHIPS

Mary Ellen Aamot, Brookings, SD  
 Jill Adkins, Monticello, MN  
 Loy Allen, Hermosa, SD  
 William Anderson, Lapeer, MI  
 Sharon Arnold, Brookings, SD  
 Anne E. Bartling, Brookings, SD  
 Harry Birath, Brookings, SD  
 Mary Bjerke, Volga, SD  
 Cyndi Boltjes, Brookings, SD  
 Delores Brage, Brookings, SD  
 Nancy Burgess, Yankton, SD  
 Rhoda Burrows, Brookings, SD  
 Viola Callesen, Estelline, SD  
 Paula Carney, Wauwatusa, WI  
 Rebecca Converse, Arlington, SD  
 Beverly Craddock, Brookings, SD  
 Miriam Dailey, Sioux Falls, SD  
 Maxine Darnall, Brookings, SD  
 Emma Dimit, Brookings, SD  
 Thelma Dittman, Brookings, SD  
 Jan Ebersdorfer, Mitchell, SD  
 Dick Edie, Brookings, SD  
 Priscilla Eitel, Brookings, SD

Farmers and Merchant Bank, Huron, SD  
 Lucia Forman, Brookings, SD  
 Susan Fredrickson, Brookings, SD  
 Ginny Freitag, Madison, SD  
 Henry and Alice Gehrke, Brookings, SD  
 Joan Getz, Brookings, SD  
 Mayla Ghazi, Fargo, ND  
 Carol Glantz, Volga, SD  
 Mary Louise Gorman, Louisville, KY  
 Kathleen Grady, Brookings, SD  
 Rachael Groethe, Brookings, SD  
 Louise Guild, Brookings, SD  
 Karen Hageman-Snow, Flandreau, SD  
 Barbara Hartinger, Aurora, SD  
 Mary Kay Helling, Brookings, SD  
 Valerie Hladky, Pearl River, NY  
 Arlene Hodges, Marshall, MN  
 Joyce Hodges, Brookings, SD  
 Kay Cee Hodson, Pierre, SD  
 Denise Hofer, San Mateo, CA  
 Steve Hoffman, Sioux Falls, SD  
 Miriam Iverson, Astoria, SD  
 Gladys Jackson, Bison, SD  
 John Janssen, Emery, SD  
 Sidney Johnson, Brookings, SD  
 Cheryl Jorenby, Brookings, SD  
 Kendra Kattelmann, Brookings, SD  
 Robert Kruger, Mayville, ND  
 Robert Kruger, Lidsborg, KS  
 Marietta Lakness, Hayti, SD  
 Jay and Kathy Larsen, Brookings, SD  
 Orpha Leibel, Brookings, SD  
 John Lellelid, Colman, SD  
 Norma Linn, Brookings, SD  
 Doug Malo, Brookings, SD  
 Darlene Martin, Greensboro, NC  
 Harvey Melstad, Bismarck, ND  
 Kenneth Meyer, Madison, SD  
 Barb Monson, Brookings, SD  
 John Moore, Edina, MN  
 Sandra Moore, Brookings, SD  
 Helen Naden Morgan, Hayward, WI  
 Nancy Neiber, Brookings, SD  
 Jeff Nelson, Sioux Falls, SD  
 L. Bruce Nelson, Smyrna, GA  
 Janet Odden, Bartlesville, OK  
 H. Lynette Olson, Brookings, SD  
 Delores Ostroot, Brookings, SD  
 Jason Owens, Brookings, SD  
 Mary Perpich, Brookings, SD  
 Carol J. Peterson, Brookings, SD  
 Nancy Gronna Peterson, Minneapolis, MN  
 Ruth Royer, Brookings, SD  
 Ellen Schaub-Wethington,  
 Minneapolis, MN  
 Trudy Schmieding, Brookings, SD  
 Ken and Lyn Sheldon, Watertown, SD  
 John B. Shultz, Harrisburg, IL  
 Lynne Stark, Brookings, SD  
 Phyllis Stotz, Brookings, SD  
 Verna Sturdevant, Brookings, SD  
 Adele Sudlow, Brookings, SD

Harriet Svec, White, SD  
 Kelley Tilmon, Brookings, SD  
 Kathy Tolrud, Brookings, SD  
 E. Joan Tonseth-Davis, St. Peter, MN  
 Susan Turner, Newcastle, WY  
 JoAnn Ullery, Brookings, SD  
 Sharon Van Schoiack, Denver, CO  
 Susan Voss, Paynesville, MN  
 Susan Walker, Sierra Vista, AZ  
 William Ward, Brookings, SD  
 Ann Willette, Enumclaw, WA  
 Charles Woodard, Brookings, SD

#### GIFTS TO SOUTH DAKOTA ARTIST SERIES

Marilyn and Max DeLong, St. Paul, MN  
 Virginia Harrington, Sioux Falls, SD  
 Zeno Wicks III and Roxanne Savaryn  
 Wicks, Brookings, SD

#### GIFTS/PLEDGES TO PRESERVATION OF HARVEY DUNN PAINTINGS

Stan Adelstein, Rapid City, SD  
 Phyllis and Robert Bell, De Smet, SD  
 Ruth Brennan, Rapid City, SD  
 Dale and Pat Larson, Brookings, SD  
 Larry and Diane Ness, Yankton, SD  
 Gregory Ochs, Minneapolis, MN  
 Rose Osika Estate, Brookings, SD  
 Donald and Ann Pier, Milwaukee, WI  
 Elaine Rossow, Rapid City, SD  
 Sioux Empire Staters, Sioux Falls, SD  
 Jack and Linda Stengel, Sioux Falls, SD  
 Robert and Sharon Struble, Milwaukee, WI  
 Sue and Curt Wischmeier, Aberdeen, SD

#### GIFTS TO OPERATIONAL ENDOWMENT

Marce Larson, Brookings, SD  
 David and Patricia Meyer, Brookings, SD  
 Jack and Linda Stengel, Sioux Falls, SD

#### IN-KIND GIFTS TO MUSEUM SHOP

Chris and Mary Chase, Brookings, SD  
 Matt and Ndonga Hansen, Brookings, SD  
 Zeno Wicks III and Roxanne Savaryn Wicks,  
 Brookings, SD  
 Dennis and Darla Bielfeldt, Old Sanctuary  
 Association, Brookings, SD

#### OTHER GIFTS

Paula Carney, Wauwatusa, WI  
 Miriam Dailey, Sioux Falls, SD  
 Thelma Dittman, Brookings, SD  
 Farmers and Merchant Bank, Huron, SD  
 Mahogany Ridge Antiques, Germansville, PA  
 Kenneth and Casualene Meyer, Madison, SD  
 Scott Miller, Brookings, SD  
 Laura Wight, Brookings, SD

#### DEFERRED OR ESTATE GIFTS

Dee and Clyde Kirkbride, Brookings, SD  
 Irwin G. Manley, Santa Maria, CA



## BOARD OF TRUSTEES

Ruth Brennan, Rapid City, President  
Marilyn DeLong, St. Paul, MN, Vice President  
Jack Stengel, Sioux Falls, Treasurer  
Maree Larson, Brookings, Secretary  
Diane Anderson, Sioux Falls  
Phyllis Bell, DeSmet  
Sharon Casey, Chamberlain  
Tim Dougherty, Sioux Falls  
Christine Hamilton, Kimball  
Rolland Johnson, Larkspur, CO  
Jerry Jorgensen, Brookings  
Rita Larson, Fowler, CO  
Lanniko Lee, Java  
RaVae Luckhart, Rapid City  
Pat Meyer, Brookings  
Peggy Gordon Miller, Brookings  
Dorothy Morgan, Brookings  
Larry Ness, Yankton  
Jane Rasmussen, Sisseton  
Susan Wischmeier, Aberdeen

## Guild Officers

Doris Moriarity, President  
Dee Granholm, Vice President  
Kathy Tolrud, Secretary  
Mary Fiedler, Treasurer  
Liz Williams, Historian  
Joan Janes, Member at Large  
Donna Ritter, Member at Large

## Staff

Lynn Verschoor, Director  
Sherry Korthals, Curator of Education  
Lisa Scholten, Curator of Collections  
John Rychtarik, Curator of Exhibitions  
Pam Adler, Museum Store Manager/Program Asst.

## Student Staff

Lisa Atkinson, Austin Buskohl, Jen Deitman, Leslie Farnham, Abbe Guest, Jason Hepler, Randy Mentele, Ryan Schlieman, Amber Tuttle, Shayla Waugh, Cassie Bailey, Adrienne Kendall

This newsletter is sponsored by: Brookings Friends of the Arts and the South Dakota Arts Council with funds from the State of South Dakota, through the Department of Tourism and State Development, and the National Endowment for the Arts.

8,000 copies of these documents were printed by the South Dakota Art Museum at a cost of \$5.56 each.



## Board Member Spotlight: Christine Hamilton

Kimball native Christine Hamilton is a vital member of the South Dakota Art Museum's Board of Trustees, her tenure marked by dedicated and ambitious service. In addition to her contributions as an SDAM board member, Christine co-owns and manages a fourth-generation farming and ranching business in central South Dakota, participating in a family foundation dedicated to promoting vitality in rural economies. She also serves on the boards of several civic organizations, HF Financial, Home Federal Bank, and the SDSU Foundation. An active entrepreneur in the agricultural industry, Christine has been involved in several start-up projects as an investor, board member, and management-team member.

Christine earned her Bachelor's degree in Philosophy from Smith College in Northampton, Massachusetts, and her MBA in Entrepreneurship from the University of Arizona. She lives with her husband, Dr. Eddie Hamilton, an SDSU Veterinary Science professor, in Kimball and Sioux Falls. She has four stepdaughters who reside in Houston, Texas, and four grandchildren.



## Staff Spotlight: Sherry Korthals

The Museum welcomes Sherry Korthals as its new Curator of Education. Sherry has already ambitiously delved into her job, working enthusiastically on production of the Museum's fall newsletter. "My time at the Museum is going great so far, I have never felt so comfortable in a job so soon," she says. "The people here are very friendly and helpful." Sherry is excited about her new position and plans to work closely with schools in the region to expand the Museum's Art in the Schools program. She is also looking forward to meeting the Museum's many Guild members and collaborating with them on several new training and gallery programs.

Sherry received a Master of Arts degree in Museum Administration from Eastern Illinois University in 1993 and an MA in Secondary Education from the University of South Dakota in 2001. Originally from northwestern Iowa, she has worked at The Children's Museum of Indianapolis and the Brooklyn Children's Museum in New York and has taught language arts and drama in the states of California and South Dakota. When she is not working at the Museum, Sherry expresses her love for technical theatre serving as Stage Manager for the South Dakota Symphony Orchestra, and her love for literature writing young-adult book reviews for the national library journal *Voice of Youth Advocates* (VOYA).



Medary Avenue at Harvey Dunn Street  
Box 2250, SDSU

Brookings, South Dakota 57007-0899  
(605) 688-5423

Toll Free 1-866-805-7590

E-mail: [sdsu.sdam@sdstate.edu](mailto:sdsu.sdam@sdstate.edu)

Web: [www.SouthDakotaArtMuseum.com](http://www.SouthDakotaArtMuseum.com)

Free public hours are:

Monday - Friday 10:00 am - 5:00 pm

Saturday 10:00 am - 4:00 pm

Sunday and holiday 12:00 pm - 4:00 pm

Closed on State holidays

Parking available

Directions: Take Exit 132 off I-29 at Brookings. Travel 1.5 miles west from I-29 on Highway 14. Turn right on Medary Avenue. Travel 4 blocks north on Medary Avenue to the intersection of Harvey Dunn Street. Museum is on the right.