



AALBORG UNIVERSITY
DENMARK

Aalborg Universitet

Hazards of wind turbines on avifauna - A preliminary appraisal within the Indian context

Deb, Himika; Sanyal, Tanmay; Kaviraj, Anilava; Saha, Subrata

Published in:
Journal of Threatened Taxa

DOI (link to publication from Publisher):
[10.11609/JOTT.5165.12.4.15414-15425](https://doi.org/10.11609/JOTT.5165.12.4.15414-15425)

Creative Commons License
CC BY 4.0

Publication date:
2020

Document Version
Publisher's PDF, also known as Version of record

[Link to publication from Aalborg University](#)

Citation for published version (APA):
Deb, H., Sanyal, T., Kaviraj, A., & Saha, S. (2020). Hazards of wind turbines on avifauna - A preliminary appraisal within the Indian context. *Journal of Threatened Taxa*, 12(4), 15414-15425.
<https://doi.org/10.11609/JOTT.5165.12.4.15414-15425>

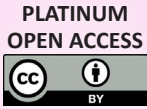
General rights

Copyright and moral rights for the publications made accessible in the public portal are retained by the authors and/or other copyright owners and it is a condition of accessing publications that users recognise and abide by the legal requirements associated with these rights.

- Users may download and print one copy of any publication from the public portal for the purpose of private study or research.
- You may not further distribute the material or use it for any profit-making activity or commercial gain
- You may freely distribute the URL identifying the publication in the public portal -

Take down policy

If you believe that this document breaches copyright please contact us at vbn@aub.aau.dk providing details, and we will remove access to the work immediately and investigate your claim.



The Journal of Threatened Taxa (JoTT) is dedicated to building evidence for conservation globally by publishing peer-reviewed articles online every month at a reasonably rapid rate at www.threatenedtaxa.org. All articles published in JoTT are registered under [Creative Commons Attribution 4.0 International License](https://creativecommons.org/licenses/by/4.0/) unless otherwise mentioned. JoTT allows unrestricted use, reproduction, and distribution of articles in any medium by providing adequate credit to the author(s) and the source of publication.

Journal of Threatened Taxa

Building evidence for conservation globally

www.threatenedtaxa.org

ISSN 0974-7907 (Online) | ISSN 0974-7893 (Print)

REVIEW

HAZARDS OF WIND TURBINES ON AVIFAUNA - A PRELIMINARY APPRAISAL WITHIN THE INDIAN CONTEXT

Himika Deb, Tanmay Sanyal, Anilava Kaviraj & Subrata Saha

26 March 2020 | Vol. 12 | No. 4 | Pages: 15414–15425

DOI: 10.11609/jott.5165.12.4.15414–15425



For Focus, Scope, Aims, Policies, and Guidelines visit <https://threatenedtaxa.org/index.php/JoTT/about/editorialPolicies#custom-0>

For Article Submission Guidelines, visit <https://threatenedtaxa.org/index.php/JoTT/about/submissions#onlineSubmissions>

For Policies against Scientific Misconduct, visit <https://threatenedtaxa.org/index.php/JoTT/about/editorialPolicies#custom-2>

For reprints, contact <ravi@threatenedtaxa.org>

The opinions expressed by the authors do not reflect the views of the Journal of Threatened Taxa, Wildlife Information Liaison Development Society, Zoo Outreach Organization, or any of the partners. The journal, the publisher, the host, and the partners are not responsible for the accuracy of the political boundaries shown in the maps by the authors.

Member



Publisher & Host





Hazards of wind turbines on avifauna - a preliminary appraisal within the Indian context

Himika Deb¹ , Tanmay Sanyal² , Anilava Kaviraj³ & Subrata Saha⁴

¹ Lalgola S.M. Girls High School (H.S.), Lalgola, Murshidabad, West Bengal 742148, India.

² Krishnagar Govt. College, Krishnagar, Nadia, West Bengal 741101, India.

³ Department of Zoology, University of Kalyani, Kalyani, West Bengal 741235, India.

⁴ Department of Materials and Production, Aalborg University, DK 9220, Denmark .

¹himika.msc@gmail.com, ²tanmaysanyal@gmail.com, ³akaviraj@gmail.com, ⁴subrata.scm@gmail.com (corresponding author)

Abstract: Wind farms are substantial sources of renewable energy in India; however, their spread across the country potentially present new hazards to local and migratory birds. This study explored the risk of electrocution and collision of birds with wind turbines close to eco-sensitive zones in India, including Bakkhali, a UNESCO World Heritage site. Geographic information system and remote sensing technology were used. The results indicate vulnerability of local bird species such as barn owl, Indian Scops Owl, Blue Rock Pigeon, Asian Koel, House Crow, Common Sandpiper, Common Snipe, Ruddy Shelduck, Lesser Whistling Duck, Cattle Egret, Great Egret, and Pond Herons, as well as migratory species such as Bar-headed Goose, Red-crested Pochard, and American Black Duck. Modification of wind turbine design and location were considered determinant factors to reduce risk of bird collisions.

Keywords: Biodiversity, birds, geographic information system, remote sensing, transect chart.

Editor: Mário G. Santiago dos Santos, Universidade de Trás-os-Montes e Alto Douro, Vila Real, Portugal. **Date of publication:** 26 March 2020 (online & print)

Citation: Deb, Himika, T. Sanyal, A. Kaviraj & S. Saha (2020). Hazards of wind turbines on avifauna - a preliminary appraisal within the Indian context. *Journal of Threatened Taxa* 12(4): 15414–15425. <https://doi.org/10.11609/jott.5165.12.4.15414-15425>

Copyright: © Deb et al 2020. Creative Commons Attribution 4.0 International License. JoTT allows unrestricted use, reproduction, and distribution of this article in any medium by providing adequate credit to the author(s) and the source of publication.

Funding: This research received no external funding.

Competing interests: The authors declare no competing interests.

Author details: HIMIKA DEB received the BSc degree in Geography from the University of Kalyani, India, and the MSc degree in Geography from C.S.J.M. University, India. She is currently an Assistant Teacher with the Lalgola S.M. Girls' High School. Her research interests include fluvial and soil erosion risk assessment, GIS, environmental degradation. TANMAY SANYAL did his PhD in Zoology under the supervision of Prof. Anilava Kaviraj. He is now Assistant Professor of Zoology in the Krishnagar Government College. He has six research publications in peer reviewed journals to his credit. ANILAVA KAVIRAJ PhD, is a Professor (retired) in the Department of Zoology, University of Kalyani, India. He served this department for 33 years as teacher and researcher. He supervised 23 students for PhD degree and published more than 108 research papers in peer reviewed international journals. SUBRATA SAHA received PhD degree in mathematics from the University of Kalyani. He was a post-doctoral researcher in the Seoul National University, South Korea, and served as faculty in the Institute of Engineering and Management, Kolkata. Currently he is a post-doctoral researcher in the Aalborg University, Denmark. He published 60 articles in internationally reputed journals.

Author contribution: TS collected the data and has full access to all data used in this study. HD and SS are responsible for data analyses. All authors equally contributed in manuscript writing. AK and SS provided critical inputs on results interpretation, modification, and approved it for submission.

Acknowledgements: This study benefitted from comments on earlier versions by anonymous reviewers. The authors sincerely thank Mr Shekhar Mandal for his help during the study.



INTRODUCTION

Wind energy is touted as an eco-friendly and sustainable alternative to fossil fuel (Nazir et al. 2019). As fossil fuel sources are more and more limited, increase in wind energy production has been growing over the last decade (Morinha et al. 2014). The global wind energy council (GWEC) has predicted a 17-fold increase in generation of wind energy by 2030 (Lu et al. 2009). Such expansion in wind energy production poses serious threats to flying vertebrates (Peron et al. 2013; Singh et al. 2015). Birds and bats often collide with rotor blades of wind turbines (WTs) and associated structures such as meteorological towers and power lines (Barclay et al. 2007; Zimmerling et al. 2013; Korner-Nievergelt et al. 2013; Ferreira et al. 2015; Beston et al. 2016; Anoop et al. 2018). Mortality of birds and bats due to such collisions has been frequently reported from the USA, Canada (Johnson 2005; Arnett et al. 2008; Loss et al. 2013, Smales et al. 2013; Erickson et al. 2014; Marques et al. 2014), Europe (Bach & Rahmel 2004; Dürr & Bach 2004; Welling et al. 2018), Australia (Hull et al. 2013), New Zealand (Powlesland 2009), India (Pande et al. 2013; Kumar et al. 2019), and many other countries. WTs were initially installed in coastal areas (Larsen & Guillemette 2007; Larsen & Guillemette 2007), then subsequently extended to inland agricultural areas (Rydell et al. 2010) and ecologically sensitive areas such as hills and mountains (Aschwanden et al. 2018).

Several factors have been identified as contributing to collision of birds and bats with WTs. These include morphology of birds, sensorial perception, phonology, behavior, habit richness or abundance, landscape, flight path, food availability, weather, turbine type, lightning, among others (Marques et al. 2014). Hull et al. (2013) identified key morphological, behavioural, and ecological features that make birds prone to collision. These include the ability of birds to detect and avoid moving turbine blades, mode of flight and foraging strategies. Pescador et al. (2019) observed that abundance of potential prey makes predator birds prone to collision with WTs. In an offshore wind park in Denmark, Larsen & Guillemette (2007) observed visibility conditions as a major factor for collision of birds with WTs. Plonczkier & Simms (2012) also pointed out visibility conditions as the major factor for collision and associated mortality of birds at offshore wind farms in England. As a result, nocturnal migrants face a high risk of collision with WTs (Aschwanden et al. 2018). De Lucas et al. (2012) indicated a link between wind conditions, topography, and flight behaviour as factors associated with mortality

of griffon vultures within and between wind farms. In Hokkaido, Japan, Kitano et al. (2013) observed highest fatality of birds at the turbines on a coastal cliff where the rotor zones of wind turbines overlapped the frequent flight paths of large birds. Pande et al. (2013) used collision index (CI) to measure avian seasonal collision rate due to WT and noted that maximum collision risk with raptors occurred predominantly during monsoon periods. In Germany, Lehnert et al. (2014) observed that both local and migratory bats were vulnerable to WTs, and fatalities varied with age and sex. Studying *Alauda arvensis* in northern Portugal, Morinha et al. (2014) found a sex biased mortality. Mortality of birds and bats was also found to vary with turbine hub height (Everaert et al. 2006; Rothery et al. 2009). Also, the modern wind turbine towers are much taller than in the past, putting more risks to birds and bats (Welling et al. 2018).

In recent articles, wetland birds have been reported as most susceptible to collision with WT in Turkey and Netherlands (Graff et al. 2016; Arikan & Turan 2017). Similar susceptibility of collision of wetland birds with WT near freshwater bodies have been found in Taiwan (Lin 2017). The Black Shag *Phalacrocorax carbo* and Cattle Egret *Bubulcus ibis* are the only species of water birds of New Zealand that often face fatal injury after collision with WT (Powlesland 2009). There is possibility that other species of water birds may also be affected. The IUCN Red List reveals a steady and continuing deterioration; according to the World's birds report 2018, one in eight bird species are threatened with extinction (www.birdlife.org). Therefore, it is necessary to prevent fatalities of birds from WTs.

Risk of collision of birds from WTs have not been explored in India aside from sporadic attempts in Gujarat (Kumar et al. 2019) and the Western Ghats (Pande et al. 2013). India is the fourth largest producer of wind energy, with an installed capacity of 32.85GW at the end of 2017. Tamil Nadu, Maharashtra, Gujarat, Rajasthan, Karnataka, and Andhra Pradesh are the leading states in the generation of wind energy in India (Chaurasiya et al. 2019). India has four biodiversity hotspots, namely: (1) the Western Ghats, (2) the eastern Himalaya, (3) the Indo-Burma region, and (4) the Sunda Islands. India is also the home to 12.6% of all avian species found in the world. Huge amount of anthropogenic activities including collision of avifauna with WT, however, have put many birds in India at a high risk of extinction (Chitale et al. 2014). This has forced the necessity to explore risk of collision of avifauna from WT in India. The main objective of this study was to investigate the collision risk of avian species, and loss of habitat due to

allocation of WT in India.

METHODS

Study Area

This study considered three geographically distinct locations, namely: (i) Gujarat and its adjoining areas (68.245–75.061°E and 23.770–17.093°N) in the western part of India; (ii) Tamil Nadu and its adjoining areas (76.018–81.967°E and 9.358–17.461°N) in the southern part of India, and (iii) Bakkhali, South 24-Parganas, West Bengal (88.231–88.288°E and 21.511–21.563°N) located in the eastern part of India (location 3). For the first two locations we used secondary data however, we used GIS technique to identify nearby ecologically sensitive areas in these two locations and attempted to explain the collision of birds in these areas. In the third location (Bakkhali), which is situated 125km south of Kolkata in Sunderban Biosphere Reserve (Figure 1), extensive fieldwork was conducted to collect primary data on death and injuries of birds due to collision with WT of Frezerganj Wind Farm, near Bakkhali during the period February 2017 to January 2018. We interacted with local people living around WTs through printed questionnaires, and collected carcasses of 15 bird species from this location. These species included Barn Owl, Indian Scops Owl, Blue Rock Pigeon, Asian Koel, House Crow, Common Sandpiper, Common Snipe,

Ruddy Shelduck, Lesser Whistling Duck, Cattle Egret, Great Egret, Indian Pond Heron, Bar-headed Goose, Red-crested Pochard, American Black Duck from this location. WTs present in Bakkhali have been presented in Figure 2.

Remote Sensing and Geographical Information System Techniques

Remote sensing (RS) and geographic information system (GIS) technology were used to identify whether actual positions of WTs caused any obstacle to bird’s movement. With the help of RS and GIS technique, it is easy to prepare the map without coming into physical contact with the object under study (Effat 2014). Satellite image of the Indian subcontinent was downloaded from Google Earth Pro followed by georeferencing by GIS (TNTmips) Software. WT locations were identified and digitized on raster map (Wald and Ranchin 1995). GIS map was drawn to establish relationship between WT areas and the bird species of various ecologically sensitive areas such as national park, biosphere reserve, and biodiversity hotspot region. Seasonal wind direction was taken into consideration to assessing the bird migration direction because wind direction sometime influenced their path (Kemp et al. 2010). The map of these ecologically sensitive areas and location of WTs were downloaded and digitized on raster maps of the Indian subcontinent to generate a complete vector map

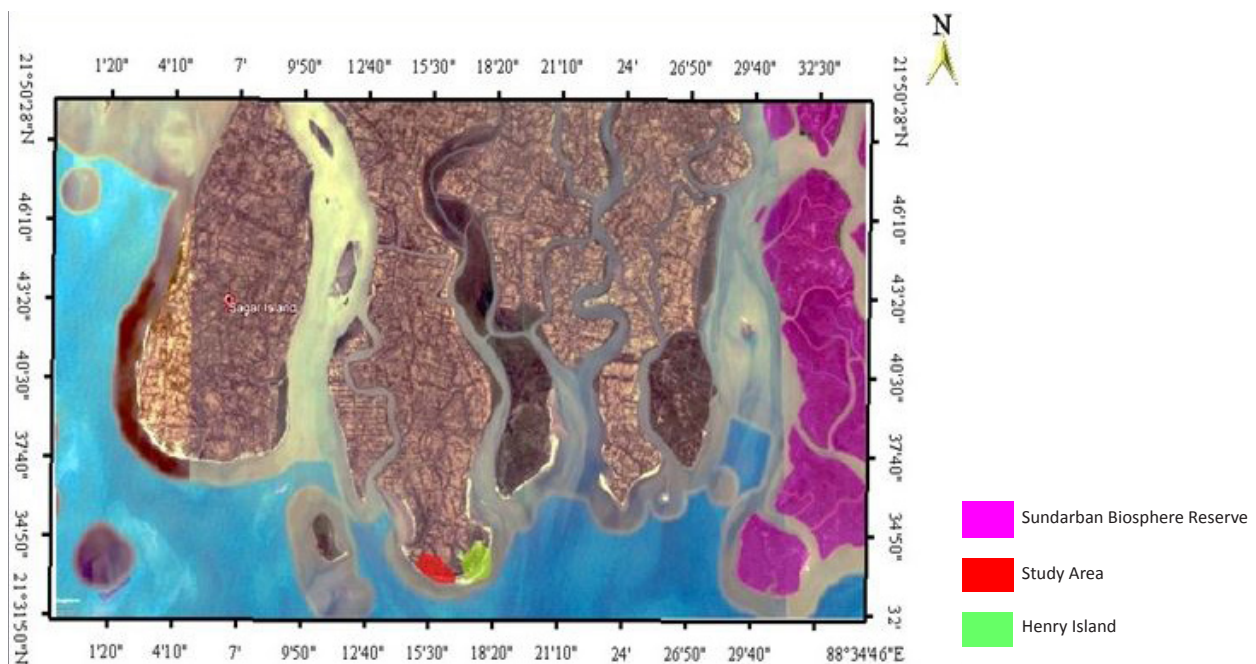


Figure 1. Geographic information system for field study area at Frezerganj Wind Farm, Bakkhali (South 24-Parganas; West Bengal; 87.916–94.051°E and 21.552–25.533°N)

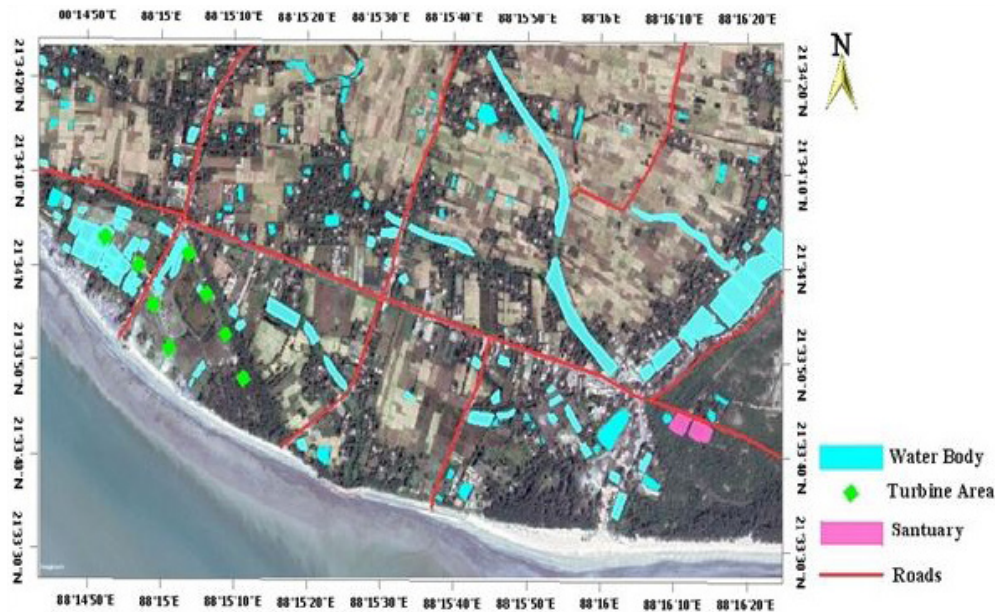


Figure 2. Exact location of wind farms in the study area at Location-3 near Bakkhali (www.google.com/earth/)

of intersection between bird habitat area and location of WTs. B-spline curve (Origin Lab), the natural way to represent a continuous curve from a set of discrete points, was used to represent collision data collected from the Bakkhali (Eilers & Marx 1996; Cao & Wang 2008).

Transect Chart

Transect charts were used to assess collision of bird with WT (Xie et al. 2015; Roeleke et al. 2016; Sivakumar & Ghosh 2017; Tucker et al. 2018). A transect represents a line following a route along which observations are considered. Transect chart is a geographic tool which demonstrates the changes and interdependency of human characteristics on physical object from one place to another (Jcnsgma et al. 1989). In this study, we used the line transect method to illustrate a particular gradient or linear pattern along which birds' location and WTs are intersected based on the latitude and longitude of that location. This tool can potentially illustrate collision risk of birds with WTs location (Saha et al. 2019). At first, a GIS map was made for three study areas by incorporating WTs location in that area (TNTmips). Then, latitude, longitude, and altitude were measured of those areas. Altitude was identified from Google Earth Pro. Then horizontal transect lines were drawn between those latitudes and longitudes. From the GIS map location of WTs, national park, biosphere reserve, biodiversity hotspot, and habitat of 15 bird species were transferred to the edge of the screen

from one end of transect line to the other. The x-axis represented horizontal distance covered by transects. In this way, we tried to demonstrate whether biosphere reserve, biodiversity hotspots or any national parks are in the area of influence of installed WTs.

RESULTS

Figure 3 represents GIS and RS mapping of seasonal wind movement, WTs locations and key biodiversity areas. It demonstrates that WTs are installed near national parks, biosphere reserves & biodiversity hotspots, and thus can potentially interrupt the natural movement of birds. This figure also identifies the direction of monsoon winds in summer and winter, which fall along the path of movements of some local and migratory birds. Distributions of 15 bird species found in location-3 have been presented in Figure 4. Figures 5a–c present data of collision of birds with WT generated from location 3. These figures reflect seasonal variation in collision. The dead and wounded birds included Barn Owl, Indian Scops Owl, Rock Pigeon, Asian Koel, House Crow, Common Sandpiper, Common Snipe, Great Egret, Ruddy Shelduck, Lesser Whistling Duck, Cattle Egret, Indian Pond Heron, and migratory bird species such as Bar-headed Goose, Red-crested Pochard, and American Black Duck (Table 1). The transect charts were used to visualize the location of WTs along a transect line to inspect whether their loci intersected birds' movement

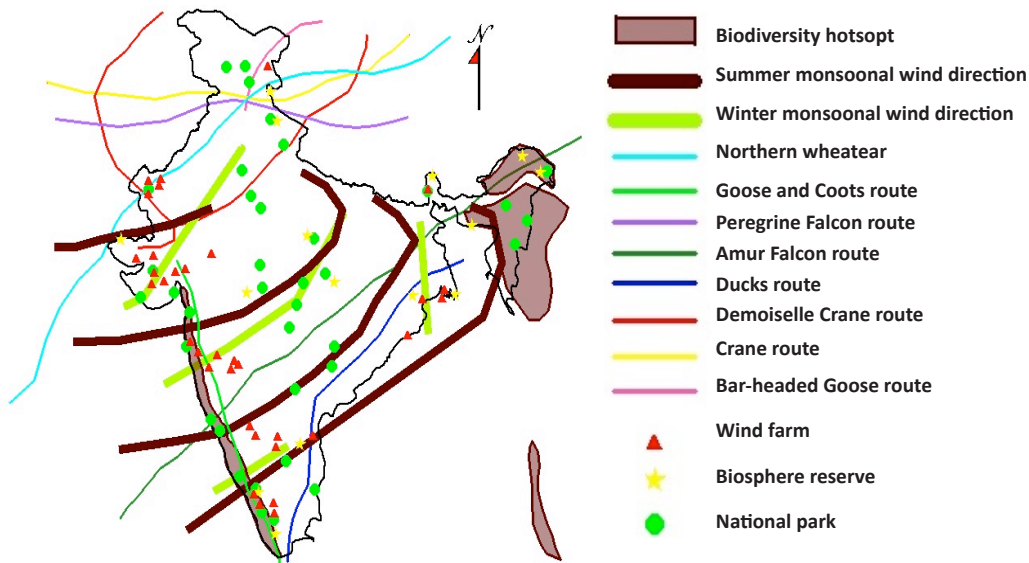


Figure 3. Remote sensing and geographical information system mapping showing the location of biodiversity hotspots, national parks, biosphere reserves, seasonal wind directions, wind farms, and migration route of some bird species in India (www.microimages.com/products/tntmips.html).

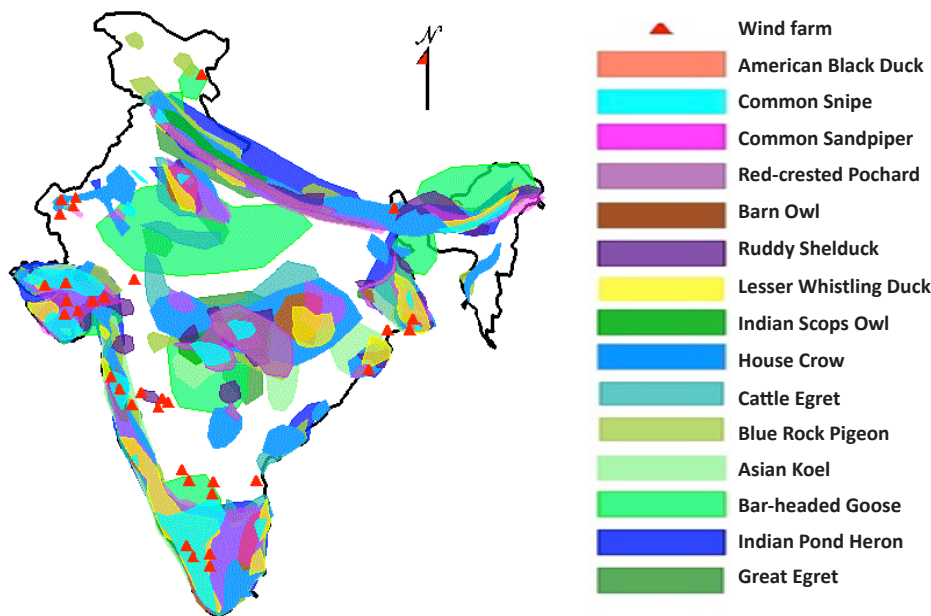


Figure 4. Remote sensing and geographical information system mapping showing the distribution mapping of fifteen bird species considered in this study (<https://ebird.org/>).

directly in Gujarat (Figure 6a), Tamil Nadu (Figure 6b), and Bakkhali (Figure 6c).

DISCUSSION

The IUCN Red List status of the birds sampled from location-3 (Bakkhali) is listed in Table 1. All these birds belong to IUCN category 'Least Concern'. Bakkhali is also home to Spoon-billed Sandpiper, a 'Critically Endangered' species. Further observations are required to assess if this bird species is vulnerable to WTs installed

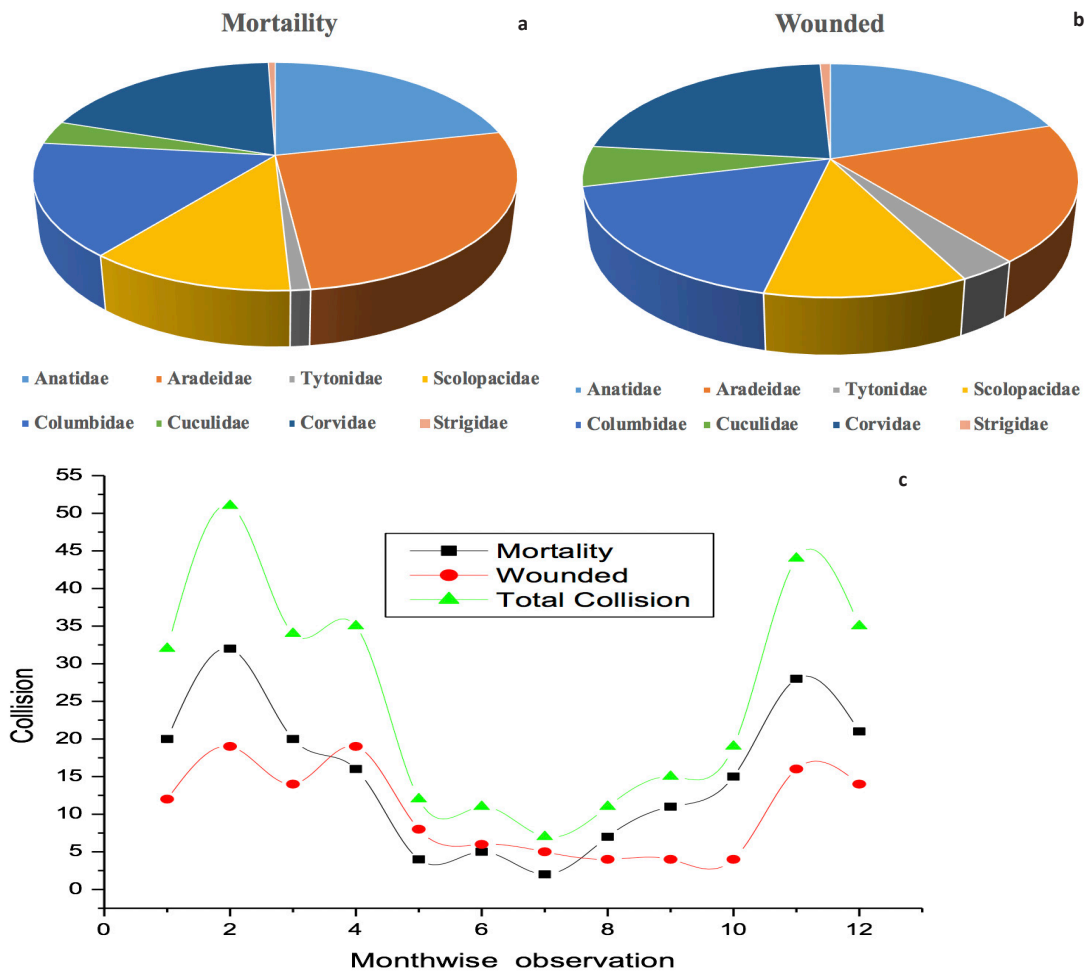


Figure 5. Records of collision of birds near Bakkhali (South 24-Parganas; West Bengal): a—family wise wounded | b—family wise mortality | c—monthly observation between February 2017 and January 2018.

in this area.

The casualty of birds found in location-3 may be attributed to seasonal variation in concentration of migratory birds as well as seasonal variation in food habits of local birds. The probability of collision of birds with WT, however, cannot be concluded from the raster map alone. This study reveals maximum mortality of Cattle Egret, Indian Pond Heron, and Great Egret (Ardeidae) in location-3 followed by Common Sandpiper, Common Snipe (Scolopacidae), Bar-headed Goose, Red-crested Pochard, Lesser Whistling Duck, American Black Duck, Ruddy Shelduck (Anatidae), Rock Pigeon (Columbidae), and House Crow (Corvidae). Barn Owl, Asian Koel, and Indian Scops Owl were the least affected species of birds. Maximum number of species killed or wounded by WT belonged to the family Anatidae with five species, followed by the family Ardeidae with three species, Scolopacidae with two species, and Tytonidae, Columbidae, Cuculidae, Strigidae & Corvidae with one

species each (Table 1, Figure 5a,b).

The birds belonging to the families Ardeidae and Anatidae are mostly water birds (such as Indian Pond Heron) and are abundant in this location. Wetlands of southern part of West Bengal are the preferred habitats for many birds, including the Bar-headed Goose and Red-crested Pochard that migrate annually from trans Himalayan region during December–January (Majumder et al. 2007). There are sporadic evidences from Turkey and Netherlands also that wetland birds are susceptible to collision with WTs (Krigsveld et al. 2009; Arikan et al. 2017), probably because of affinity of the migratory birds to wetlands. Habitat association (Thaxter et al. 2017) and abundance appeared to be key factors behind collision of the birds of the family Ardeidae and Anatidae in Bakkhali.

Kumar et al. (2019) observed several bird species around Kutch District (part of Location-1, Gujarat) between October 2011 and July 2014, and found

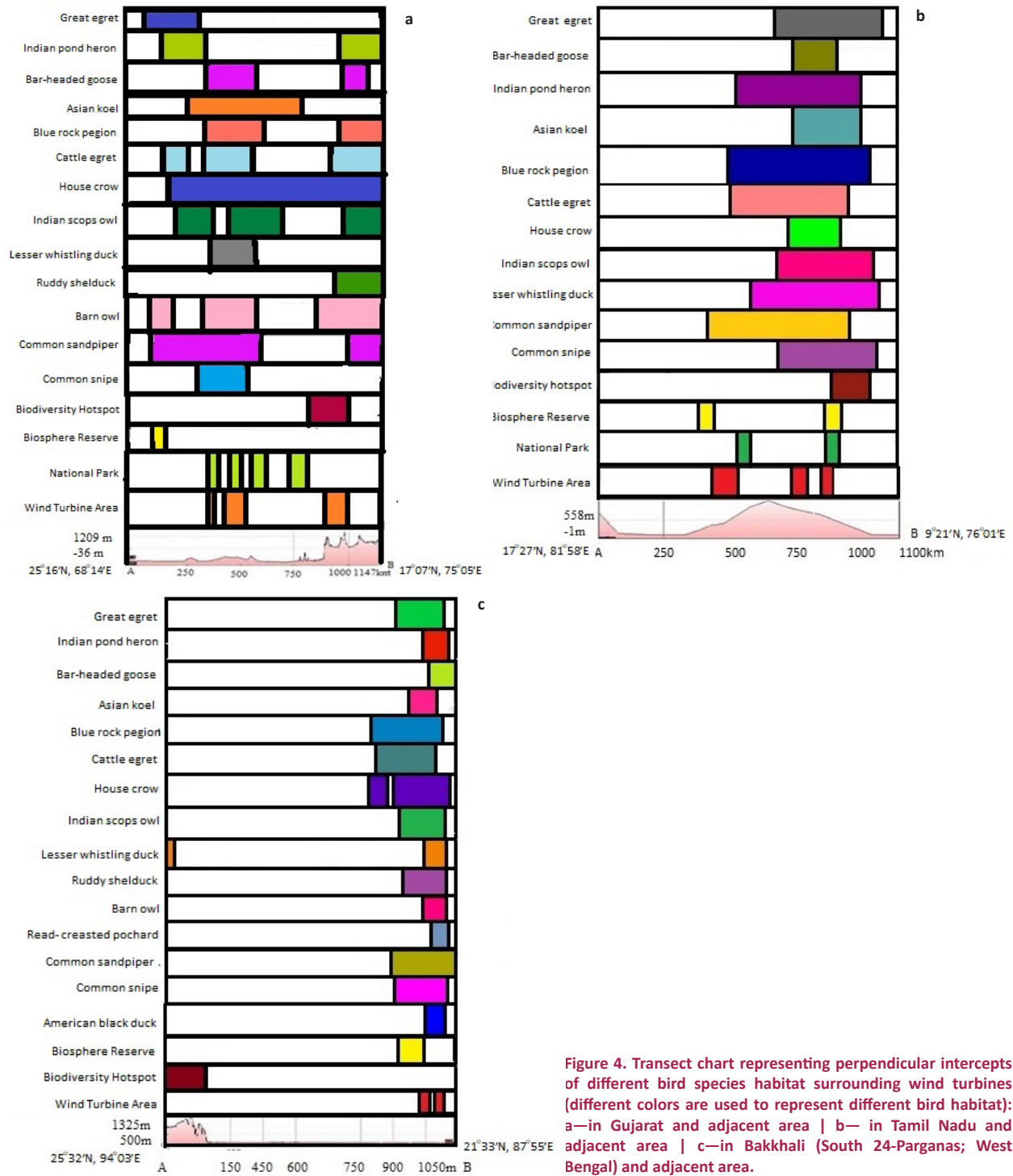


Figure 4. Transect chart representing perpendicular intercepts of different bird species habitat surrounding wind turbines (different colors are used to represent different bird habitat): a—in Gujarat and adjacent area | b— in Tamil Nadu and adjacent area | c—in Bakkhali (South 24-Parganas; West Bengal) and adjacent area.

carcasses of 47 birds belonging to 11 species. Since a few national parks are situated in this area (Figure 3), many more species are at risk from the WTs. Pande et al. (2013) observed 89 species of birds, from July 2008 to June 2010 in Bhambarwadi Wind Farm Plateau in northern Western Ghats, out of which 27 birds were under risk by rotor blades. During this period, the

authors found 12 dead birds belonging to seven different species, viz., Black Kite *Milvus migrans*, Bonelli's Eagle *Aquila fasciata*, Changeable Hawk Eagle *Nisaetus cirrhatus*, Red-rumped Swallow *Cecropis daurica*, Dusky Crag-martin *Ptyonoprogne concolor*, Slaty-legged Crake *Rallin aurizonoides*, and Common Crow. These birds, however, are not depicted in Figures 6a–6c, which

Table 1. IUCN status of the bird species collision found in location -3 (www.iucnredlist.org)

Family	Name	Scientific name	IUCN status
Anatidae	Bar-headed Goose	<i>Anser indicus</i>	Least Concern
	Red-crested Pochard	<i>Netta rufina</i>	Least Concern
	Lesser Whistling Duck	<i>Dendrocygna javanica</i>	Least Concern
	American Black Duck	<i>Anas rubripes</i>	Least Concern
	Ruddy Shelduck	<i>Tadoma ferruginea</i>	Least Concern
Ardeidae	Cattle Egret	<i>Bubulcus ibis</i>	Least Concern
	Indian Pond Heron	<i>Ardeola grayii</i>	Least Concern
	Great Egret	<i>Ardea alba</i>	Least Concern
Tytonidae	Barn Owl	<i>Tyto alba</i>	Least Concern
Strigidae	Indian Scops Owl	<i>Otus bakkamoena</i>	Least Concern
Scolopacidae	Common Sandpiper	<i>Actitis hypoleucos</i>	Least Concern
	Common Snipe	<i>Gallinago gallinago</i>	Least Concern
Columbidae	Rock Pigeon	<i>Columba livia</i>	Least Concern
Cuculidae	Asian Koel	<i>Eudynamis scolopaceus</i>	Least Concern
Corvidae	House Crow	<i>Corvus splendens</i>	Least Concern

consider only 15 birds whose carcasses are recorded from location-3. Western Ghats is a biodiversity hotspot region and is home to many birds, which are vulnerable to collision with WTs installed in this region. Another 'Critically Endangered' species of bird, the Great Indian Bustard (Dasgupta 2017) is found mostly in Rajasthan, a state with high wind energy installations.

In India, more than 95% of the wind power capacity is installed in the two southern states, Tamil Nadu & Karnataka and three western states, Gujarat, Rajasthan & Maharashtra (Chaurasiya et al. 2019). Since many wildlife protected areas are situated in these states, there is possibility of overlap of home range of the local and migratory birds and the WT installations.

4.1 Mitigation Measures

Bose et al. (2018) used ecological niche factor analysis (ENFA) to identify overlaps collision niche between species of birds, which are susceptible to injuries from WTs. Wind energy is a dominant renewable energy source in India, and there is possibility of expansion of the WT installation capacities in many other states including within ecologically sensitive areas. Therefore,

it is necessary to develop environmentally sustainable planning at wind turbine installations to prevent collision of birds with WTs. Since birds that migrate during the day have a lower risk of colliding with WTs (Nichols et al. 2018), restriction of WTs during daytime may be an effective measure to reduce collision probabilities. Temporary shutdown during high risk period has also been recommended by a few authors (Marques et al. 2014; May 2015). Visual approaches to alert birds by painting wind turbine blades with conspicuous and contrast colors or using ultraviolet reflective paint on rotor blades for UV-sensitive species and using pulsating lights or other wavelengths may also reduce fatalities (Arnet & May 2016). Although use of bio-acoustic sound and electromagnetic signals have been found effective for some species of birds and bats (Marques et al. 2014; May et al. 2015), effectiveness of radar as a potential measure to deter birds and bats is questionable (Arnett et al. 2008).

CONCLUSIONS

We examined distribution of bird species across India and possibility of their collision with WTs. From digitization on raster maps, this study demonstrates that wind farms in India are located along the ecologically sensitive zones like national parks, biosphere reserves, biodiversity hotspots, and coastal areas. Transect charts ensure the possibility of collision of birds with WTs in these areas. Bakkhali is located in Sundarban Biosphere Reserve, an ecologically sensitive zone and a UNESCO World Heritage site. This study reveals that 12 local and three migratory species of birds in Bakkhali are vulnerable to collision with wind turbines. There is utmost urgency to modify design of wind turbines to save these birds from collision. Further studies are required to assess accurate causes of bird fatalities near wind farms in India, detailed assessment of the most affected local and migratory species of birds, their dependency with other species, and implementation of additional & complementary measures to protect birds from wind turbines. As a future extension, one needs to conduct risk analysis through robust statistical analysis.

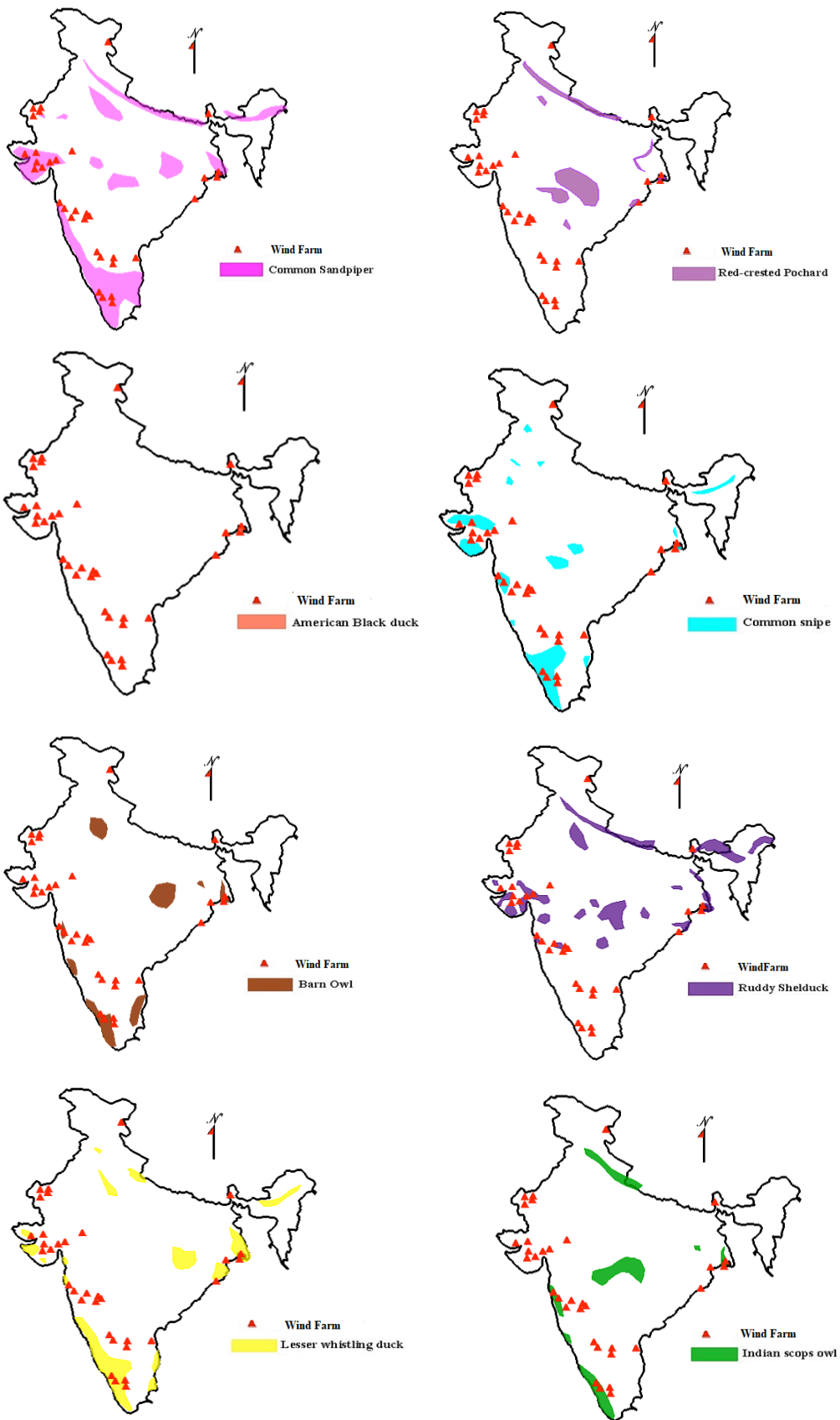
REFERENCES

- Arnett, E.B. & R. F. May (2016). Mitigating wind energy impacts on wildlife: approaches for multiple taxa. *Human Wildlife Interactions* 10(1):28–41. <https://doi.org/10.26077/1jeg-7r13>
- Aschwanden, J., H. Stark, D. Peter, T. Steuri, B. Schmid & F. Liechti

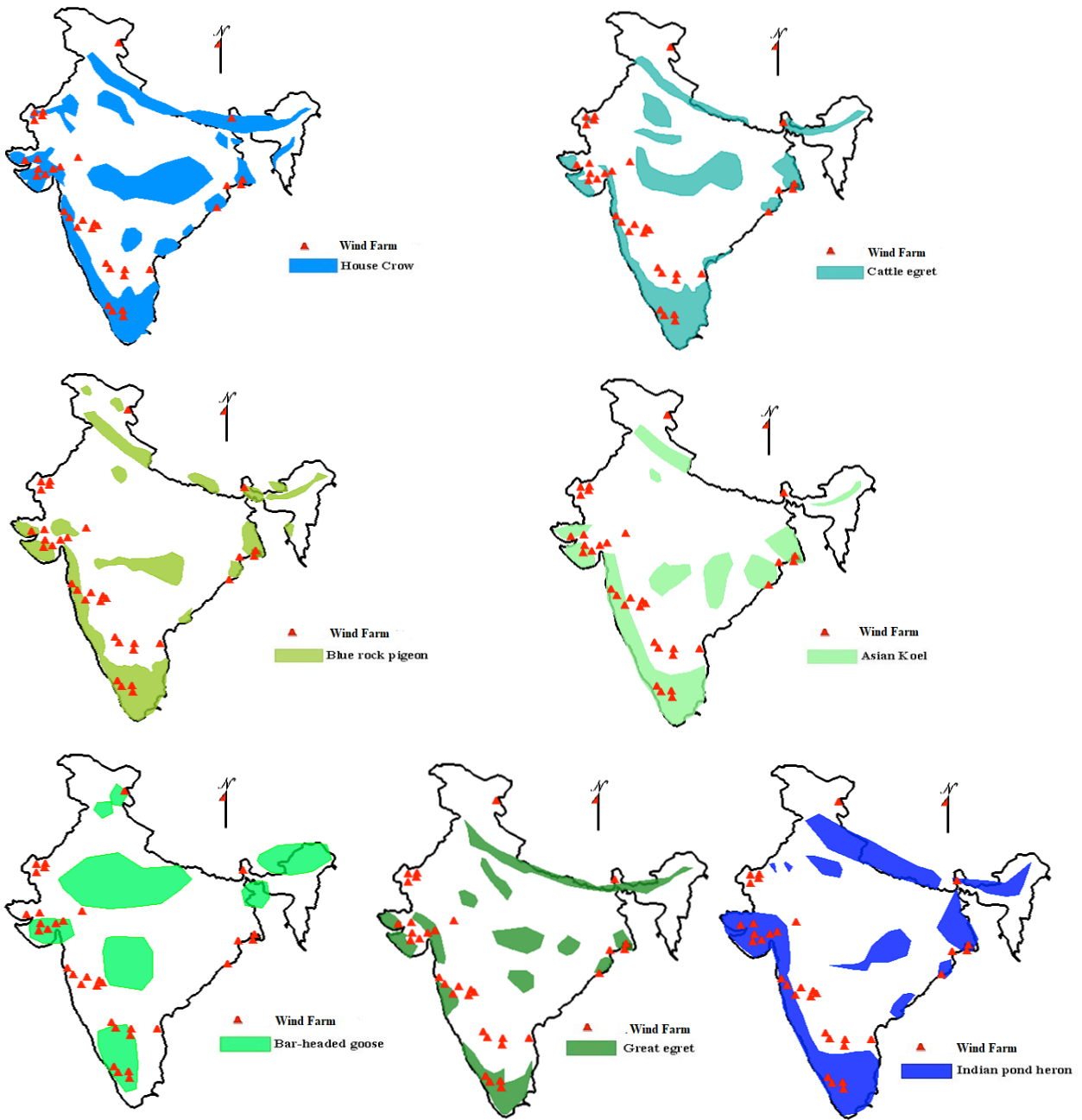
- (2018). Bird collisions at wind turbines in a mountainous area related to bird movement intensities measured by radar. *Biological Conservation* 220: 228–236. <https://doi.org/10.1016/j.biocon.2018.01.005>
- Arikan, K. & S.L. Turan (2017). Estimation of bird fatalities caused by wind turbines in Turkey. *Fresenius Environmental Bulletin* 26(11): 6543–6550.
- Arnett, E.B., W.K. Brown, W.P. Erickson, J.K. Fiedler, B.L. Hamilton, T.H. Henry, A. Jain, G.D. Johnson, J. Kerns, R.R. Koford, C.P. Nicholson, T.J. O'Connell, M.D. Piorkowski & R.D. Tankersley (2008). Patterns of bat fatalities at wind energy facilities in North America. *Journal of Wildlife Management* 72: 61–78. <https://doi.org/10.2193/2007-221>
- Anoop, V., P.R. Arun & R. Jayapal (2018). Do Black-naped Hares *Lepus nigricollis* (Mammalia: Lagomorpha: Leporidae) have synanthropic association with wind farms? *Journal of Threatened Taxa* 10(7): 11925–11927. <http://doi.org/10.11609/jott.3411.10.7.11925-11927>
- Bach, L. & U. Rahmel (2004). Summary of wind turbine impacts on bats—assessment of a conflict. *Bremer Beiträge für Naturkunde und Naturschutz* 7: 245–252.
- Barclay, R.M., E.F. Baerwald & J.C. Gruver (2007). Variation in bat and bird fatalities at wind energy facilities: assessing the effects of rotor size and tower height. *Canadian Journal of Zoology* 85(3): 381–387. <https://doi.org/10.1139/Z07-011>
- Bose, A., T. Dürr, R.A. Klenke & K. Henle (2018). Collision sensitive niche profile of the worst affected bird-groups at wind turbine structures in the Federal State of Brandenburg, Germany. *Scientific Reports* 8(1): 3777. <https://doi.org/10.1038/s41598-018-22178-z>
- Beston, J.A., J.E. Diffendorfer, S.R. Loss & D.H. Johnson (2016). Prioritizing avian species for their risk of population-level consequences from wind energy development. *PLoS One* 11(3): e0150813. <https://doi.org/10.1371/journal.pone.0150813>
- Cao, J. & G. Wang (2008). The structure of uniform B-spline curves with parameters. *Progress in Natural Science* 18(3): 303–308. <https://doi.org/10.1016/j.pnsc.2007.09.005>
- Chitale, V.S., M.D. Behera & P.S. Roy (2014). Future of endemic flora of biodiversity hotspots in India. *PLoS One* 9(12): e115264. <https://doi.org/10.1371/journal.pone.0115264>
- Chaurasiya, P.K., V. Warudkar & S. Ahmed (2019). Wind energy development and policy in India: A review. *Energy Strategy Reviews* 24: 342–357. <https://doi.org/10.1016/j.esr.2019.04.010>
- Dasgupta, S. (2017). Critically Endangered Great Indian Bustards burn up on power lines. Date of download 17-05-2018. <https://india.mongabay.com/2017/12/27/video-critically-endangered-great-indian-bustards-burn-up-on-power-lines/>
- De Lucas, M., M. Ferrer & G.F. Janss (2012). Using wind tunnels to predict bird mortality in wind farms: the case of griffon vultures. *PLoS One* 7(11): e48092. <https://doi.org/10.1371/journal.pone.0048092>
- Dürr, T. & L. Bach (2004). Bat deaths and wind turbines: a review of current knowledge, and of the information available in the database for Germany. *Bremer Beiträge für Naturkunde und Naturschutz* 7: 253–264.
- Eilers, P.H. & B.D. Marx (1996). Flexible smoothing with B-splines and penalties. *Statistical Science* 1: 89–102. <https://doi.org/10.1214/ss/1038425655>
- Effat, H.A. (2014). Spatial modeling of optimum zones for wind farms using remote sensing and geographic information system, application in the Red Sea, Egypt. *Journal of Geographic Information System* 6: 358–374. <https://doi.org/10.4236/jgis.2014.64032>
- Erickson, W.P., M.M. Wolfe, K.J. Bay, D.H. Johnson & J.L. Gehring (2014). A comprehensive analysis of small-passerine fatalities from collision with turbines at wind energy facilities. *PLoS One* 9(9): e107491. <https://doi.org/10.1371/journal.pone.0107491>
- Everaert, J. & E.W. Stienen (2006). Impact of wind turbines on birds in Zeebrugge (Belgium). *Biodiversity and Conservation* 16: 3345–3359. <https://doi.org/10.1007/s10531-006-9082-1>
- Ferreira, D., C. Freixo, J. Cabral, R. Santos & M. Santos (2015). Do habitat characteristics determine mortality risk for bats at wind farms? Modelling susceptible species activity patterns and anticipating possible mortality events. *Ecological Informatics* 28: 7–18. <https://doi.org/10.1016/j.ecoinf.2015.04.001>
- Graff, B.J., J.A. Jenks, J.D. Stafford, K.C. Jensen & T.W. Grovenburg (2016). Assessing spring direct mortality to avifauna from wind energy facilities in the Dakotas. *Journal of Wildlife Management* 80(4): 736–745. <https://doi.org/10.1002/jwmg.1051>
- Hull, C.L., E.M. Stark, S. Peruzzo & C.C. Sims (2013). Avian collisions at two wind farms in Tasmania, Australia: taxonomic and ecological characteristics of colliders versus non colliders. *New Zealand Journal of Zoology* 40(1): 47–62. <https://doi.org/10.1080/03014223.2012.757243>
- Jongsma, D., J.M. Woodside, W. Huson, S. Suparka & D. Kadarisman (1989). Geophysics and tentative late cenozoic seismic stratigraphy of the Banda arc-Australian continent collision zone along three transects. *Netherlands Journal of Sea Research* 24(2/3): 205–229. [https://doi.org/10.1016/0077-7579\(89\)90150-6](https://doi.org/10.1016/0077-7579(89)90150-6)
- Johnson, G.D. (2005). A review of bat mortality at wind-energy developments in the United States. *Bat Research News* 46: 45–49.
- Kemp, M.U., J. Shamoun-Baranes, H. van Gasteren, W. Bouten & E.E. van Loon (2010). Can wind help explain seasonal differences in avian migration speed? *Journal of Avian Biology* 41: 672–677. <https://doi.org/10.1111/j.1600-048X.2010.05053.x>
- Kitano, M. & S. Shiraki (2013). Estimation of bird fatalities at wind farms with complex topography and vegetation in Hokkaido, Japan. *Wildlife Society Bulletin* 37(1): 41–48. <https://doi.org/10.1002/wsb.255>
- Korner-Nievergelt, F., R. Brinkmann, I. Niermann & O. Behr (2013). Estimating bat and bird mortality occurring at wind energy turbines from covariates and carcass searches using mixture models. *PLoS One* 8(7): p.e67997. <https://doi.org/10.1371/journal.pone.0067997>
- Krijgsveld, K.L., K. Akershoek, F. Schenk, F. Dijk & S. Dirksen (2009). Collision risk of birds with modern large wind turbines. *Ardea* 97(3): 357–366. <https://doi.org/10.5253/078.097.0311>
- Kumar, S.R., V.K. Anoop, P.R. Arun, R. Jayapal & A.M. Ali (2019). Avian mortalities from two wind farms at Kutch, Gujarat and Davangere, Karnataka, India. *Current Science* 116(9): 1587–1592. <https://doi.org/10.18520/cs/v116/i9/1587-1592>
- Larsen, J.K. & M. Guillemette (2017). Effects of wind turbines on flight behaviour of wintering common eiders: implications for habitat use and collision risk. *Journal of Applied Ecology* 44: 516–522. <https://doi.org/10.1111/j.1365-2664.2007.01303.x>
- Lehnert, L.S., S. Kramer-Schadt, S. Schönborn, O. Lindecke, I. Niermann & C.C. Voigt (2014). Wind farm facilities in Germany kill noctule bats from near and far. *PLoS One* 9(8): p.e103106. <https://doi.org/10.1371/journal.pone.0103106>
- Lin, S.C. (2017). A survey and study of tower kills and wind turbine kills. *Applied Ecology and Environmental Research* 15(1): 589–607. https://doi.org/10.15666/aeer/1501_589607
- Loss, S.R., T. Will & P.P. Marra (2013). Estimates of bird collision mortality at wind facilities in the contiguous United States. *Biological Conservation* 168: 201–209. <https://doi.org/10.1016/j.biocon.2013.10.007>
- Lu, X., M.B. McElroy & J. Kiviluoma (2009). Global potential for wind-generated electricity. *Proceedings of the National Academy of Sciences* 106(27): 10933–10938. <https://doi.org/10.1073/pnas.0904101106>
- Mazumdar, S., K. Mookherjee & G.K. Saha (2007). Migratory water birds of wetlands of southern West Bengal, India. *Indian Birds* 3(2): 42–45.
- Marques, A.T., H. Batalha, S. Rodrigues, H. Costa, M.J.R. Pereira, C. Fonseca, M. Mascarenhas & J. Bernardino (2014). Understanding bird collisions at wind farms: An updated review on the causes and possible mitigation strategies. *Biological Conservation* 179: 40–52. <https://doi.org/10.1016/j.biocon.2014.08.017>
- May, R.F. (2015). A unifying framework for the underlying mechanisms of avian avoidance of wind turbines. *Biological Conservation* 190: 179–187. <https://doi.org/10.1016/j.biocon.2015.06.004>
- Morinha, F., P. Travassos, F. Seixas, A. Martins, R. Bastos, D. Carvalho,



- P. Magalhães, M. Santos, E. Bastos & J.A. Cabral (2014). Differential mortality of birds killed at wind farms in Northern Portugal. *Bird Study* 61(2): 255–259. <https://doi.org/10.1080/00063657.2014.883357>
- Nazir, M.S., A.J. Mahdi, M. Bilal, H.M. Sohail, N. Ali & Iqbal (2019). Environmental impact and pollution-related challenges of renewable wind energy paradigm – A review. *Science of the Total Environment* 683: 436–444. <https://doi.org/10.1016/j.scitotenv.2019.05.274>
- Nichols, K.S., T. Homayoun, J. Eckles & R.B. Blair (2018). Bird-building collision risk: an assessment of the collision risk of birds with buildings by phylogeny and behavior using two citizen science datasets. *PLoS One* 13(8): e0201558. <https://doi.org/10.1371/journal.pone.0201558>
- Pande, S., A. Padhye, P. Deshpande, A. Ponskhe, P. Pandit, A. Pawashe, S. Pednekar & R. Pandit (2013). Avian collision threat assessment at Bhambarwadi Wind Farm Plateau in northern Western Ghats, India. *Journal of Threatened Taxa* 5(1): 3504–3515. <https://doi.org/10.11609/JoTT.o3096.210>
- Péron, G., J.E. Hines, J.D. Nichols, W.L. Kendall, K.A. Peters & D.S. Mizrahi (2013). Estimation of bird and bat mortality at wind-power farms with superpopulation models. *Journal of Applied Ecology* 50(4): 902–911. <https://doi.org/10.1111/1365-2664.12100>
- Pescador, M., J.I.G. Ramírez & S.J. Peris (2019). Effectiveness of a mitigation measure for the Lesser Kestrel (*Falco naumanni*) in wind farms in Spain. *Journal of Environmental Management* 231: 919–925. <https://doi.org/10.1016/j.jenvman.2018.10.094>
- Plonczkier, P. & I.C. Simms (2012). Radar monitoring of migrating Pink-footed Geese: behavioural responses to offshore wind farm development. *Journal of Applied Ecology* 49: 1187–1194. <https://doi.org/10.1111/j.1365-2664.2012.02181.x>
- Powlesland, R. (2009). Impact of wind farms on birds: a review. *Science for Conservation* 289: 5–41. Retrieved on 03/05/2018 from www.doc.govt.nz/Documents/science-and-technical/sfc289entire.pdf
- Roeleke, M., T. Blohm, S. Kramer-Schadt, Y. Yovel & C.C. Voigt (2016). Habitat use of bats in relation to wind turbines revealed by GPS tracking. *Scientific Reports* 6: 28961. <https://doi.org/10.1038/srep28961>
- Rothery, P., I. Newton & B. Little (2009). Observations of seabirds at offshore wind turbines near Blyth in northeast England. *Bird Study* 56(1): 1–14. <https://doi.org/10.1080/00063650802648093>
- Saha, S., G.C. Paul, & T.K. Hembram (2019). Classification of terrain based on geo-environmental parameters and their relationship with land use/land cover in Bansloi River basin, eastern India: RS-GIS approach. *Applied Geomatics* 12: 55–71: <https://doi.org/10.1007/s12518-019-00277-4>
- Singh, K., E.D. Baker & M.A. Lackner (2015). Curtailing wind turbine operations to reduce avian mortality. *Renewable Energy* 78: 351–356. <https://doi.org/10.1016/j.renene.2014.12.064>
- Rydell J., L. Bach, M. Dubourg-Savage, M. Green, L. Rodrigues & A. Hedenström (2010). Bat mortality at wind turbines in northwestern Europe. *Acta Chiropterologica* 12(2): 261–274. <https://doi.org/10.3161/150811010X537846>
- Sivakumar, R. & S. Ghosh (2017). Determination of threshold energy for the development of seismic energy anomaly model through integrated geotectonic and geoinformatics approach. *Natural Hazards* 86(2): 711–740. <https://doi.org/10.1007/s11069-016-2713-2>
- Smales, I., S. Muir, C. Meredith & R. Baird (2013). A description of the biosis model to assess risk of bird collisions with wind turbines. *Wildlife Society Bulletin* 37(1): 59–65 <https://doi.org/10.1002/wsb.257>
- Thaxter C.B., G.M. Buchanan, J. Carr, S.H. Butchart, T. Newbold, R.E. Green, J.A. Tobias, W.B. Foden, S. O'Brien, J.W. Pearce-Higgins (2017). Bird and bat species' global vulnerability to collision mortality at wind farms revealed through a trait-based assessment. *Proceedings of the Royal Society B: Biological Sciences* 284(1862): 20170829. <https://doi.org/10.1098/rspb.2017.0829>
- Tucker, M.A., K. Böhning-Gaese, W.F. Fagan, J. M. Fryxell, B. Van Moorter, S.C. Alberts, A.H. Ali, A.M. Allen, N. Attias, T. Avgar & H. Bartlam-Brooks (2018). Moving in the anthropocene: global reductions in terrestrial mammalian movements. *Science* 359(6374): 466–469. <https://doi.org/10.1126/science.aam9712>
- Xie, H., G. Yao & G. Liu (2015). Spatial evaluation of the ecological importance based on GIS for environmental management: a case study in Xingguo county of China. *Ecological Indicators* 51: 3–12. <https://doi.org/10.1016/j.ecolind.2014.08.042>
- Wald, L. & T. Ranchin (1995). Fusion of images and raster-maps of different spatial resolutions by encrustation: an improved approach. *Computers, Environment and Urban Systems* 19(2): 77–87. [https://doi.org/10.1016/0198-9715\(95\)00014-Y](https://doi.org/10.1016/0198-9715(95)00014-Y)
- Wellig, S.D., S. Nussle, D. Miltner, O. Kohle, O. Glaizot, V. Braunisch, M.K. Obrist & R. Arlettaz (2018). Mitigating the negative impacts of tall wind turbines on bats: vertical activity profiles and relationships to wind speed. *PLoS One* 13(3): e0192493. <https://doi.org/10.1371/journal.pone.0192493>
- Zimmerling, J.R., A. Pomeroy, M. d'Entremont & C.M. Francis (2013). Canadian estimate of bird mortality due to collisions and direct habitat loss associated with wind turbine developments. *Avian Conservation and Ecology* 8(2): 10. <https://doi.org/10.5751/ACE-00609-080210>



Appendix 1. Home ranges for fifteen birds considered in this study (continued on next page...)



Appendix 1. Home ranges for fifteen birds considered in this study (.... continued from previous page)





The Journal of Threatened Taxa (JoTT) is dedicated to building evidence for conservation globally by publishing peer-reviewed articles online every month at a reasonably rapid rate at www.threatenedtaxa.org. All articles published in JoTT are registered under [Creative Commons Attribution 4.0 International License](https://creativecommons.org/licenses/by/4.0/) unless otherwise mentioned. JoTT allows unrestricted use, reproduction, and distribution of articles in any medium by providing adequate credit to the author(s) and the source of publication.

ISSN 0974-7907 (Online) | ISSN 0974-7893 (Print)

March 2020 | Vol. 12 | No. 4 | Pages: 15407–15534
Date of Publication: 26 March 2020 (Online & Print)
DOI: 10.11609/jott.2020.12.4.15407-15534

www.threatenedtaxa.org

Conservation Application

Do wildlife crimes against less charismatic species go unnoticed? A case study of Golden Jackal *Canis aureus* Linnaeus, 1758 poaching and trade in India
– Malaika Mathew Chawla, Arjun Srivathsa, Priya Singh, Iravatee Majgaonkar, Sushma Sharma, Girish Punjabi & Aditya Banerjee, Pp. 15407–15413

Review

Hazards of wind turbines on avifauna - a preliminary appraisal within the Indian context
– Himika Deb, Tanmay Sanyal, Anilava Kaviraj & Subrata Saha, Pp. 15414–15425

Communications

Analysis of stereotypic behaviour and enhanced management in captive Northern Giraffe *Giraffa camelopardalis* housed at Zoological Garden Alipore, Kolkata
– Tushar Pramod Kulkarni, Pp. 15426–15435

A new species of shieldtail snake (Reptilia: Squamata: Uropeltidae) from Kolli Hill complex, southern Eastern Ghats, peninsular India
– S.R. Ganesh & N.S. Achyuthan, Pp. 15436–15442

The insect fauna of Tenompok Forest Reserve in Sabah, Malaysia
– Arthur Y.C. Chung, Vivianny Paul & Steven Bosuang, Pp. 15443–15459

Tiger beetles (Coleoptera: Cicindelinae) of Davao Region, Mindanao, Philippines
– Milton Norman Medina, Analyn Cabras, Harlene Ramillano & Reagan Joseph Villanueva, Pp. 15460–15467

An assessment of the conservation status of a presumed extinct tree species *Wendlandia angustifolia* Wight ex. Hook.f. in southern Western Ghats, India
– Chellam Muthumperumal, Paramasivam Balasubramanian & Ladan Rasingam, Pp. 15468–15474

Short Communications

Additional morphological notes on the male of *Icius alboterminus* (Caleb, 2014) (Aranei: Salticidae) with new distribution records from India
– Dhruv A. Prajapati & R.D. Kamboj, Pp. 15475–15480

Three moss families (Bryopsida: Calymperaceae, Hyopterygiaceae, & Pterobryaceae): new distribution records to bryoflora of Andhra Pradesh, India
– Ananthaneni Sreenath, Midigesi Anil Kumar, Paradesi Anjaneyulu & Boyina Ravi Prasad Rao, Pp. 15481–15488

Notes

Mating behavior of the Yellow-throated Marten *Martes flavigula* (Mammalia: Carnivora: Mustelidae)
– Abinash Parida, Meesala Krishna Murthy & G.S. Solanki, Pp. 15489–15492

New to Myanmar: the Rosy Starling *Pastor roseus* (Aves: Passeriformes: Sturnidae) in the Hkakabo Razi Landscape
– Sai Sein Lin Oo, Myint Kyaw, Nay Myo Hlaing & Swen C. Renner, Pp. 15493–15494

New records of *Heloderma alvarezii* (Wiegmann, 1829) (Sauria: Helodermatidae) on the coast of Oaxaca and increases to its distribution in Mexico
– Jesús García-Grajales, Rodrigo Arrazola Bohórquez, María Arely Penguilly Macías & Alejandra Buenrostro Silva, Pp. 15495–15498

Description of a new subspecies of the genus *Microcerotermes* Silvestri, 1901 (Amitermitinae: Termitidae: Isoptera) and the first record of another termite species from Meghalaya, India
– Khirod Sankar Das & Sudipta Choudhury, Pp. 15499–15502

A new record of the hoverfly genus *Dasysyrphus* Enderlein, 1938 (Insecta: Diptera: Syrphidae) from India
– Jayita Sengupta, Atanu Naskar, Aniruddha Maity, Panchanan Parui, Sumit Homchaudhuri & Dhriti Banerjee, Pp. 15503–15506

First record of Banded Lineblue *Prosotas aluta* Druce, 1873 (Insecta: Lepidoptera: Lycaenidae) from Bangladesh
– Rajib Dey, Ibrahim Khalil Al Haidar, Sajib Rudra & M. Rafiqul Islam, Pp. 15507–15509

Notes on *Ptilomera agriodes* (Hemiptera: Heteroptera: Gerridae) from Eastern Ghats, India
– J. Deepa, A. Narahari, M. Karuthapandi, S. Jadhav & C. Shiva Shankar, Pp. 15510–15513

***Didymocarpus bhutanicus* W.T. Wang (Gesneriaceae): a new addition to the herbs of India**
– Subhajit Lahiri, Sudhansu Sekhar Dash, Monalisa Das & Bipin Kumar Sinha, Pp. 15514–15517

Rediscovery of *Epilobium trichophyllum* Hausskn.: a rare and endemic plant from Sikkim Himalaya, India
– David L. Biate & Dinesh K. Agrawala, Pp. 15518–15521

Additions of woody climbers (Lianas) to the flora of Manipur, India
– Longjam Malemnganbee Chanu & Debjyoti Bhattacharyya, Pp. 15522–15529

Molecular characterization of stinkhorn fungus *Aseroë coccinea* Imazeki et Yoshimi ex Kasuya 2007 (Basidiomycota: Agaricomycetes: Phallales) from India
– Vivek Bobade & Neelesh Dahanukar, Pp. 15530–15534

Member



Publisher & Host

