



**AALBORG UNIVERSITY**  
DENMARK

**Aalborg Universitet**

## **Over-The-Air Evaluation of User Body Loss for Popular In-Ear Bluetooth Earbuds**

Zhekov, Stanislav Stefanov; Mikkelsen, Jan H.; Pedersen, Gert Frølund

*Published in:*  
International Journal of Antennas and Propagation

*DOI (link to publication from Publisher):*  
[10.1155/2021/5534119](https://doi.org/10.1155/2021/5534119)

*Creative Commons License*  
CC BY 4.0

*Publication date:*  
2021

*Document Version*  
Publisher's PDF, also known as Version of record

[Link to publication from Aalborg University](#)

*Citation for published version (APA):*  
Zhekov, S. S., Mikkelsen, J. H., & Pedersen, G. F. (2021). Over-The-Air Evaluation of User Body Loss for Popular In-Ear Bluetooth Earbuds. *International Journal of Antennas and Propagation*, 2021, [5534119].  
<https://doi.org/10.1155/2021/5534119>

### **General rights**

Copyright and moral rights for the publications made accessible in the public portal are retained by the authors and/or other copyright owners and it is a condition of accessing publications that users recognise and abide by the legal requirements associated with these rights.

- ? Users may download and print one copy of any publication from the public portal for the purpose of private study or research.
- ? You may not further distribute the material or use it for any profit-making activity or commercial gain
- ? You may freely distribute the URL identifying the publication in the public portal ?

### **Take down policy**

If you believe that this document breaches copyright please contact us at [vbn@aub.aau.dk](mailto:vbn@aub.aau.dk) providing details, and we will remove access to the work immediately and investigate your claim.

## Research Article

# Over-the-Air Evaluation of User Body Loss for Popular In-Ear Bluetooth Earbuds

Stanislav Stefanov Zhekov , Jan Hvolgaard Mikkelsen , and Gert Frølund Pedersen 

*Department of Electronic Systems, Technical Faculty of IT and Design, Aalborg University, Aalborg, Denmark*

Correspondence should be addressed to Stanislav Stefanov Zhekov; [stz@es.aau.dk](mailto:stz@es.aau.dk)

Received 19 February 2021; Revised 14 April 2021; Accepted 5 May 2021; Published 20 May 2021

Academic Editor: Giuseppina Monti

Copyright © 2021 Stanislav Stefanov Zhekov et al. This is an open access article distributed under the Creative Commons Attribution License, which permits unrestricted use, distribution, and reproduction in any medium, provided the original work is properly cited.

Wireless earbuds have become the preferred electronic device for listening to music and for hands-free talking. The combined radio performance of the earbud and the handset determines the quality of the established communication link and hence the quality of the user experience. This paper presents an extensive comparative study of five common Bluetooth earbuds, where the transmit performance, in terms of total radiated power (TRP), is investigated. The measurements are conducted for the right-side earbud and for the low and high ends of the Bluetooth frequency spectrum. Moreover, two scenarios are considered: (1) the earbud is placed in free space and (2) the earbud is placed in a person's ear. For the latter case, a total of 12 volunteers are involved in the measurement campaign. Measurements show that the mean performance deterioration, due to the placement of the earbud in the person's ear, ranges from 3 to 6 dB across the tested earbuds.

## 1. Introduction

Bluetooth in-the-ear headsets, also referred to as earbuds, have become hugely popular in recent years. This trend is only expected to continue as technology moves towards smart headphones or “hearables” [1]. The popularity of earbuds is mainly due to features, such as comfortable in-the-ear fit and compact size, meaning that they are easy to carry even when not in use and have reasonable battery life. However, because of the small size of the earbuds, all internal components, such as Bluetooth chip, amplifiers, antenna, battery, power management system, microphone, and speaker needed for the operation of the device, are tightly packed. One of the consequences of this compactness is that only a very limited volume is available for the deployment of the antenna. The restriction on the volume puts fundamental limits on the achievable performance of such an electrically small antenna [2, 3]. It has been shown that coupling between an electrically small antenna and loudspeaker coils can deteriorate the radiation efficiency of the antenna [4]. Also, the battery has an impact on the performance of antennas for wearable devices [5, 6].

Another inevitable performance issue arises from the fact that the antenna of the earbud is located in the direct vicinity of the human body and therefore interacts with the biological tissue. It is well known that the presence of lossy human tissue near the antenna can significantly degrade antenna performance [7–10]. Specifically, the presence of lossy human tissue in the near-field of the antenna leads to a shift in the resonant frequency and absorption of part of the transmitted power. Also, the proximity of the human body to the antenna distorts the radiation pattern. All these effects can be further compounded by the fact that the antenna is small, i.e., the antenna is more vulnerable [11]. It should be mentioned that the detrimental effect of the user presence depends on the actual design of the employed antenna [10–13].

Multiple studies of the user effect on mobile terminal antennas have been presented in the public literature, and some of them can be found in [7–10, 12, 14]. Investigations of the user impact on body-worn antennas have also been conducted [11, 15–17]. A few studies on headset performance as well as antenna design for applications, such as headsets and hearing-aids, have also been reported [5, 6, 13, 18–25].

To ensure a reliable connection between a mobile terminal and an earbud, link budgets for both up- and down-link must be satisfied. When designing an antenna intended for use in an earbud device, it is important to consider the user impact, just as for mobile terminal antennas. A poorly designed antenna can result in intermittent signal loss, leading to loss of audio packets, and therefore reduced audio quality. In severe cases, the Bluetooth link may even disconnect, with complete music or conversation interruption as a result. To prevent the occurrence of such malfunctions, the RF performance of each type of earbud needs to be tested in the most critical scenario, namely, when the device is placed in a person's ear, that is, in the vicinity of lossy biological tissue.

This paper provides a comprehensive comparative study of the impact that the human body has on the real-life radio performance of a set of commercially available earbuds. So far, to the authors' best knowledge, no such work has previously been presented in the open literature. The systematic investigation of the user effect, presented in this paper, provides information about the expected decrease, overall and in specific directions, of the signal strength due to user presence. This knowledge is valuable to antenna designers as it reveals how the user affects different earbud radiator implementations, thereby enabling the designer to consider their structures. The presented work is also important to the industry as the presented comparative study allows companies to see how their earbud performs in relation to other competing products. The experimental setup and the designed measurement system for the study are of interest to other researchers needing to conduct similar investigations.

From the public literature, it is clear that a lot of effort has gone into radio channel modeling for body-area-network (BAN) applications [26–29]. For the present study, the channel is static and body shadowing therefore does not vary over time. Evaluation of time-varying body shadowing is only possible if the earbuds are operating in test mode, which unfortunately is not available for commercial products. Further, the radiation performance is measured in terms of total radiated power (TRP), and no specific path loss ( $S_{21}$ ) performance is measured. No comparison to existing BAN path loss channel models is therefore possible. It should be mentioned that the earbuds are commercial devices and not prototypes, and therefore the available information about their internal structure, such as, e.g., antenna design is very limited. The variety of tests that can be conducted with such final products is limited in comparison to cases where a mock-up, which can be fully controlled, is used. Therefore, this paper solely focuses on the adverse effect that the body of a user has on the antenna performance of selected commercial earbuds.

This paper presents the results from a study of the radio performance of five popular and commercially available earbuds. The TRP of the earbuds is first measured in free space and subsequently in the presence of a person. A total of 12 volunteers were involved in the investigation. The change in the radiation pattern when the earbud is placed in the user's ear, compared with the free space case, is discussed.

Body loss is evaluated for each test case as this parameter combines and captures all effects of the user on the radio performance of the device. Therefore, body loss measurements can be used to compare the impact of the human body on the antennas of the different earbuds.

## 2. Performance Indicators

An earbud's ability to radiate power is, as mentioned, evaluated by the TRP metric. The TRP is a parameter adopted to evaluate the overall transmit performance of commercial wireless devices [12, 30]. The TRP is a gain-related parameter comprising the sum of all power radiated by a device, regardless of direction and polarization, averaged over the sphere, and it is calculated as follows [30]:

$$\text{TRP} = \frac{1}{4\pi} \int_{\theta=0}^{\pi} \int_{\phi=0}^{2\pi} \left( \text{EIRP}_{\theta}(\theta, \phi) + \text{EIRP}_{\phi}(\theta, \phi) \right) \sin(\theta) d\theta d\phi, \quad (1)$$

where EIRP is the effective isotropic radiated power. A higher TRP means that the earbud is capable of radiating more power.

In this paper, the TRP performance is evaluated for both free space and when the earbud is placed in the right ear of the volunteer. The two scenarios are illustrated in Figures 1(a) and 1(b), respectively. The right-side earbud is used since it usually serves as a master for coupled-pair earbuds. Free space is here defined as the case where the earbud is mounted with no close-by objects around. In free space, the antenna's ability to radiate and collect a radio signal is generally better than when the antenna is in the vicinity of a user. Having results for both free space and in a user's presence makes it possible to evaluate the impact of the user on the antenna operation. The difference between antenna performance in free space and when in presence of a user is referred to as body loss [10].

To enable a comparison of radiation patterns for free space and user presence cases, the free space orientation of the earbud is kept similar to the orientation the earbud has when placed in a person's ear. However, perfect alignment between the two cases is not possible due to difference in pinna size and shape of the different volunteers, i.e., the in-ear orientation of the earbud for each volunteer is slightly different. This means that different free space orientations would be needed for each volunteer, which has not been ensured in this work. Volunteers also differ in body size, which leads to differences in the propagation distance (loss) to the different measurement probes in the anechoic chamber. However, these effects are inevitable in such a study, and it is assessed that they have only a very limited impact on measurement results, and that they, therefore, do not influence the conclusions of the study.

As shown in Figure 1(b), the volunteers were sitting on a special chair during the test. In total, 12 volunteers were involved in the measurement campaign. The range of heights of the volunteers spans from 1.62 m to 1.91 m, while the weight of the volunteers ranges from 48 kg to 94 kg.

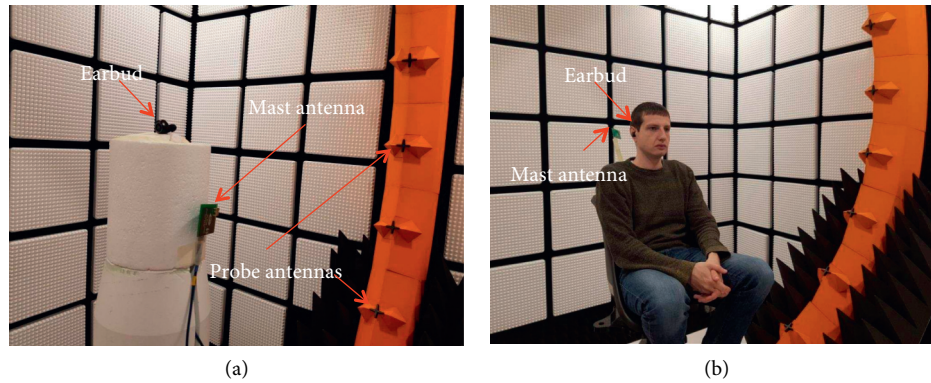


FIGURE 1: Setup for testing the transmit performance of the right-side earbud placed in (a) free space and (b) right ear of a volunteer.

Therefore, the group of volunteers introduces a large spread in terms of body sizes, which is beneficial for the investigation. The spread means that the findings of the presented study are representative in terms of user impact from a real customer population and therefore provides realistic estimations of earbud performance.

The earbuds used in the study are the Beoplay E8 2.0, Earin M2, Bose soundsport free, Apple Airpods 2, and Beoplay E8 3rd Gen as shown in Figure 2. Since the earbuds are all commercial products, the available information such as model of each earbud internal structure, antenna structure, and placement is very sparse. To qualify the reported measurement results, efforts were made to seek information about the different antennas and their location in the evaluated earbuds. All discussions below are based on information found in photos at the FCC website [31]. Looking at the photos of the internal structure of the earbuds, as provided at the FCC website, the following information about the used antennas was obtained: (1) Bose soundsport free uses an antenna resembling a planar Inverted-F Antenna (IFA), where the arm has a meander shape; (2) the antenna in the Earin M2 is a planar strip monopole but the precise structure cannot be determined from the photos; (3) both Beoplay E8 2.0 and Beoplay E8 3rd Gen have planar strip monopole antennas; and (4) for Apple Airpods 2, the photos do not show the type of antenna used. As already mentioned, no detailed performance information is available for the different antenna implementations. The approximate positions of the antennas inside the earbuds, as indicated in Figure 2, are again based on photos provided at the FCC website. For the different earbuds, clear differences in antenna positioning can be seen.

### 3. Test Methodology

The measurement system contains multiple modules, as shown in the overview in Figure 3. The over-the-air (OTA) measurement of the radiated power was conducted in a shielded anechoic chamber using a spectrum analyzer (Agilent E4440A) along with a multiprobe Satimo StarGate 24 system (SG24), produced by Microwave Vision Group (MVG). The SG24 system consists of 23 measurement probes distributed on a supporting ring. The power received

by each of the probes was measured using the spectrum analyzer operating in zero-span mode with a bandwidth of 8 MHz; this is the maximum bandwidth of the used spectrum analyzer in this mode. Measurements over two 8 MHz wide frequency bands, centered at 2.406 GHz and 2.476 GHz, were performed, i.e., over the bands from 2.402 GHz to 2.410 GHz and from 2.472 GHz to 2.480 GHz. The lowest Bluetooth channel starts at 2.402 GHz, while the highest one stops at 2.480 GHz. The guard bands are positioned at 2.400–2.402 GHz and 2.480–2.4835 GHz. That is, measurements were conducted at the lowest and highest ends of the Bluetooth spectrum. As the Bluetooth wireless technology standard supports 79 channels (1 MHz spacing), a total of eight channels (at each end of the spectrum) were measured simultaneously with this setup.

To counteract interference problems, the Bluetooth standard uses frequency-hopping spread spectrum technology based on a pseudo-random hopping pattern with 1600 hops per second. These 1600 hops per second are distributed across all 79 channels. As a direct consequence of this, it is to be expected that the signal occupies any given channel an average of approximately 20 times per second.

With the implemented measurement system, the spectrum analyzer records an 8 MHz band (eight channels) multiple times for a period of one second; one second is the time duration used to listen to one 8 MHz band per probe and polarization. From each recording, the peak value of the received signal is only kept. Due to the frequency hopping, an active Bluetooth signal is not always present within these 8 MHz during each recording. In such instances, only noise was recorded. However, the measurement setup guarantees that for the duration of the full one-second measurement period, multiple signals were caught, i.e., no completely blank measurement instances would result. Among all detected signals for the one-second duration, the strongest signal was only kept and used for the TRP evaluation.

Before testing, the system was calibrated using a reference antenna. Both the SG24 and the spectrum analyzer were connected to a PC with software (Satimo Multi Measurement developed by MVG) for controlling the measurement and for logging data. The mobile phone (iPhone X), connected to the earbud, was placed in an RF shielded chamber (Rohde & Schwarz CMU-Z11), as shown in Figure 4(a).

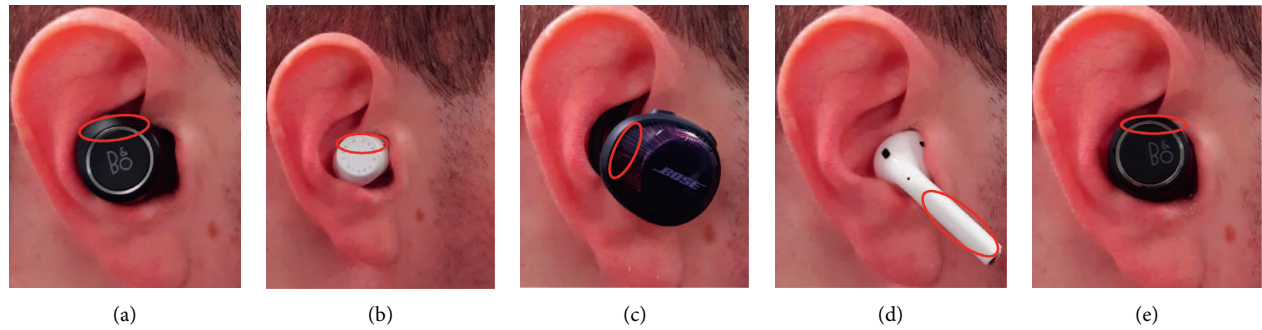


FIGURE 2: Positions of the earbud antennas marked with red ellipse: (a) Beoplay E8 2.0; (b) Earin M2; (c) Bose soundsport free; (d) Apple airpods 2; (e) Beoplay E8 3rd gen.

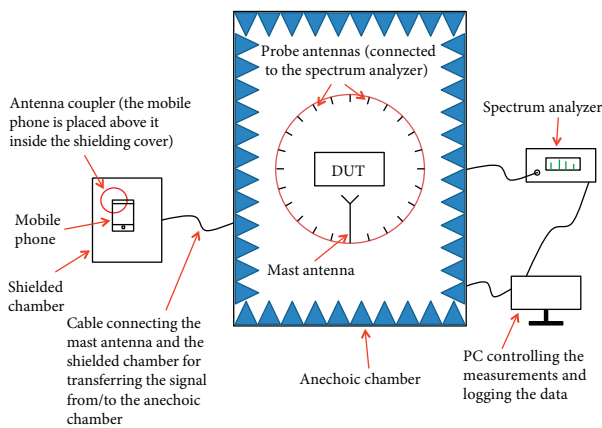


FIGURE 3: Overview diagram of the measurement system. DUT is acronym for the device under test.

More precisely, the handset was placed above an antenna coupler inside the RF shielding cover, which is located outside the anechoic chamber. The signal emitted by the handset is first received by the antenna coupler in the shielded chamber. Then, through a cable, this signal is passed to the mast antenna (see Figure 3), placed inside the anechoic chamber. From here, the signal is then finally wirelessly relayed to the earbud. In a reverse way, a signal is passed from the earbud to the mobile phone. During measurements, the shielding cover was closed (see Figure 4(b)) in order to significantly attenuate any interference signals. The latter is crucial because the presence of any strong interference signal from other transmitters might force the handset to stop, through adaptive frequency hopping, using the channels of interest (within the measured 8 MHz bands). If the latter happens, then—as mentioned—only noise would be measured. Further, all volunteers were asked to turn off the Bluetooth on their wireless devices, when sitting in the chamber, in order to remove any corruption of the measurement results. Uninterrupted communication between the earbud and handset was ensured by continuously playing music on the earbud. That is, the handset was sending sound data to the earbud, and the earbud was sending acknowledgment packets to the handset.

In both cases, free space and in the presence of a person, the mast antenna was located close to the earbud, as shown

in Figure 1, to establish and keep the communication link. This is needed since the received signal (depending on the direction of communication, it is received by the earbud or handset) is quite weak due to loss in the antenna coupler as well as propagation loss in both wired and wireless signaling. In addition, lower than 0 dB total efficiency of the handset, mast, and earbud antennas introduces extra attenuation to the signal between earbud and handset. That is, if the mast antenna is located further away from the earbud, no connection can be established.

It should be mentioned that the Bluetooth signal of the handset passed to the mast antenna and transmitted by the latter inside the anechoic chamber was measured and the TRP was approximately  $-25$  dBm. This signal is very weak and therefore does not affect the measurement results as the TRP of the earbud is significantly higher.

The power transmitted by the device under test was measured successively by each probe, distributed on the ring in the elevation plane (see Figure 1), for each polarization (as already mentioned, one measurement, per probe and polarization and for one 8 MHz band, takes one second). Then, the mast/chair was rotated along the azimuth, and the power was measured again. This process continued until the full sphere was covered, and then the resulting TRP value was finally evaluated using the measured EIRP values. Each measurement was done with  $15^\circ$  of resolution in elevation and with  $30^\circ$  of resolution in azimuth. These values were selected as a trade-off between measurement time and density of the measurement points, i.e., more points mean that the persons have to stay longer in the chamber. A full spherical measurement for one 8 MHz wide frequency band takes several minutes. Therefore, to reduce measurement time, only the low and the high ends of the Bluetooth spectrum were measured.

## 4. Results and Discussion

The central frequencies, 2.406 GHz and 2.476 GHz, are used below for designating the results from the measurements conducted over the bands 2.402–2.410 GHz and 2.472–2.480 GHz, respectively.

**4.1. Free Space Measurements.** Free space results for TRP measurements for each of the tested earbuds are shown in



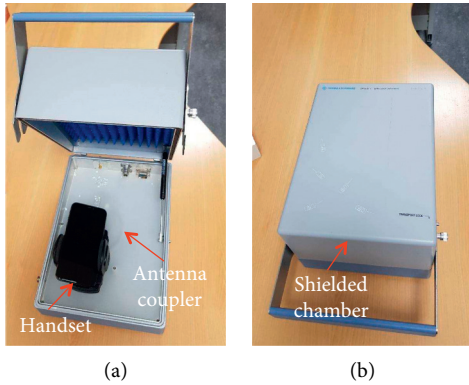


FIGURE 4: Shielded chamber with (a) open and (b) closed lid.

Table 1. Most of the earbuds show distinct differences in the transmit performance at the two ends of the spectrum.

Generally, the devices perform better at higher frequencies except for Earin M2, which is the only device showing higher TRP at the lower frequency. The differences in measured TRP values and low versus high frequency performance among the tested devices are due to different feeding power and design of the earbuds antennas.

An example of the test setup in the anechoic chamber is shown in Figure 1(a). As already mentioned, efforts were made to have the orientation of the earbud in free space similar to the in-ear orientation. For better visualization, the coordinate system used in the measurements in the anechoic chamber is presented with respect to a sitting person as shown in Figure 5. The normalized measured EIRP radiation patterns of the earbuds in free space, measured at 2.406 GHz, are shown in Figure 6. All presented results are obtained through measurement as follows: (1) the EIRP radiation patterns are measured in the anechoic chamber and (2) for each of the earbuds, the radiation patterns are normalized to the maximum value for that earbud. Presenting the measurement results in this way allows for an easy comparison of radiation patterns between the earbuds. The correlation between the earbud radiation patterns at 2.406 GHz and 2.476 GHz is quite high—the lowest value is found to be 0.93. Therefore, the shape of the radiation pattern changes insignificantly across the Bluetooth frequency band. However, a difference in the shape of the radiation patterns among the earbuds is observed. Here, out of all the tested devices, Apple AirPods 2 seems to have the most directional radiation pattern, pointing away from the direction where the user's head would be present.

**4.2. Measurements in the Presence of a User.** TRP measurement results when the earbud is placed in the volunteer's right ear are presented in Table 2. It is observed that the spread is larger for the smaller-sized earbuds (Beoplay and Earin). An explanation for this could be that their antennas experience a stronger impact from differences in the shape and size of volunteer's pinna. This larger impact could result from the smaller distance between antenna and pinna in comparison to the same distance for the larger

TABLE 1: Measured TRP of the right-side earbuds in free space.

Earbud	TRP (dBm)		$\Delta$ (dB)
	2.406 GHz	2.476 GHz	
Beoplay E8 2.0	-7.2	-6.5	0.7
Earin M2	-2.5	-5.6	2.9
Bose soundsport free	-1.2	2.3	1.1
Apple airpods 2	-1.0	2.3	1.3
Beoplay E8 3rd gen	-2.6	2.7	0.1

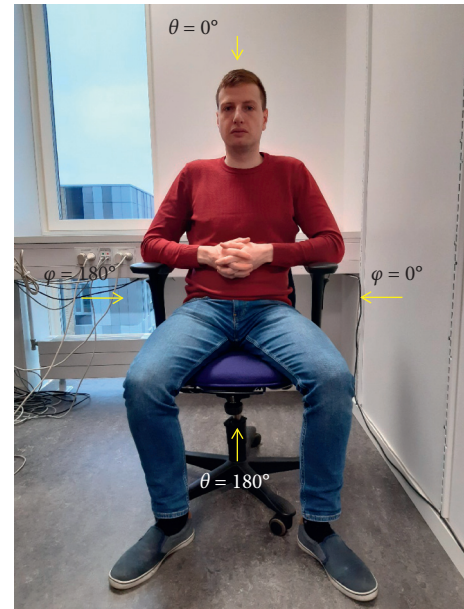


FIGURE 5: Coordinate system used in the measurements.

earbuds—Apple AirPods 2 and Bose soundsport free (see Figure 2). The differences in TRP between the earbuds are a result of a combination of different antenna designs, different degrees of user impact, which depends on antenna design and placement, and different levels of input power.

Figure 7 shows the normalized mean measured EIRP radiation pattern, as averaged across all volunteers, for each earbud at 2.406 GHz. As in free space, the correlation between the radiation patterns at 2.406 GHz and 2.476 GHz is quite high—the mean correlation is here 0.96 when averaged across volunteers and earbuds. It can be seen that the mean radiation patterns of the earbuds have similarities. More specifically, (1) the lowest correlation is 0.82 at 2.406 GHz and 0.84 at 2.476 GHz; (2) the mean correlation across all earbuds is 0.92 at both 2.406 GHz and 2.476 GHz; and (3) the highest correlation is 0.96 at 2.406 GHz and 0.95 at 2.476 GHz. These results show that user presence tends to uniform the shape of the radiation pattern of the earbud antennas even though they have different designs and placements. This uniforming is a result of the signal blockage from the user's body.

**4.3. Body Loss.** It is of great interest to study how much the antenna performance is affected by the presence of the user. To this end, the body loss parameter shows the performance

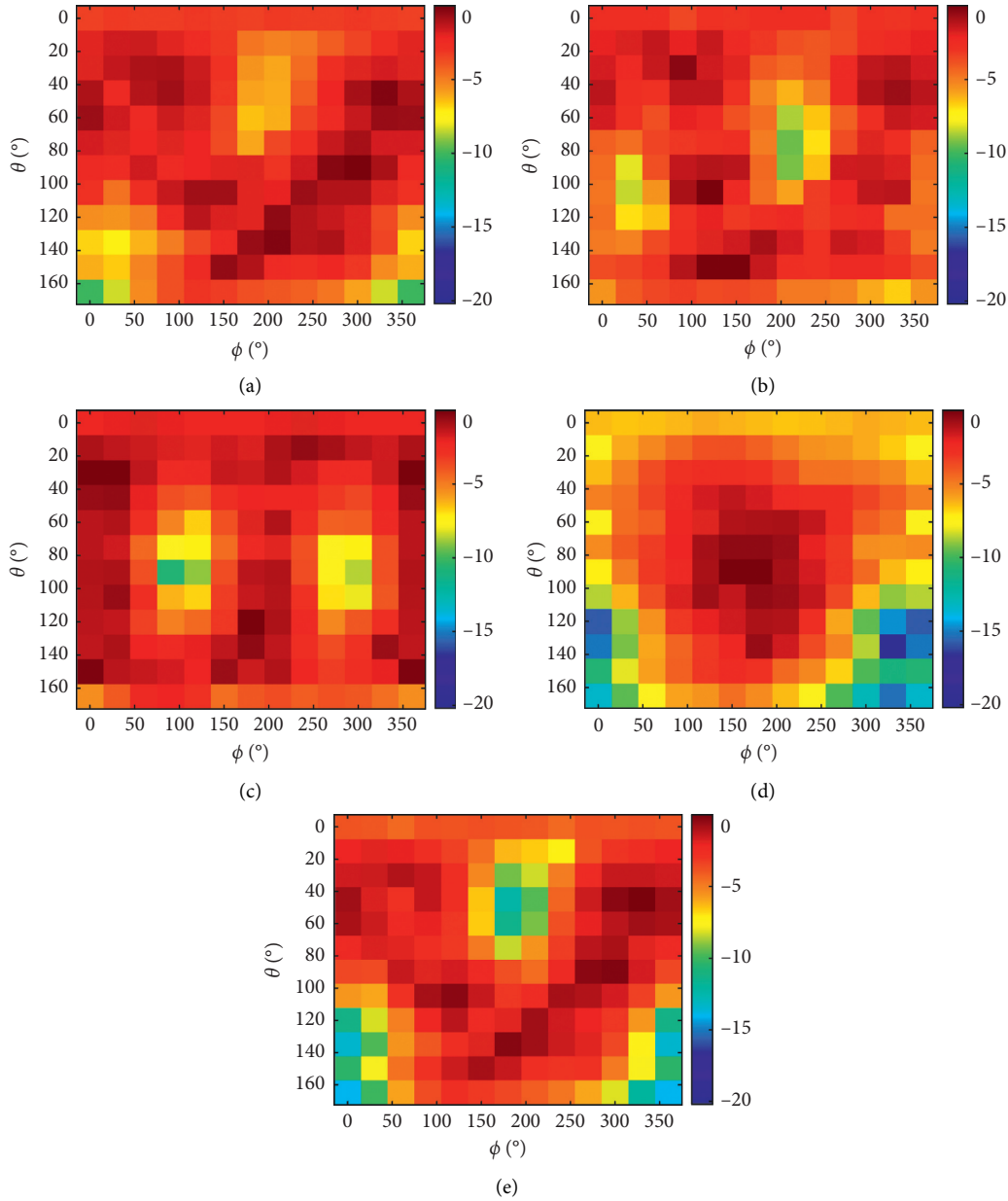


FIGURE 6: Normalized measured EIRP (in dB) radiation pattern of the right-side earbud in free space at 2.406 GHz: (a) Beoplay E8 2.0; (b) Earin M2; (c) Bose soundport free; (d) Apple airpods 2; (e) Beoplay E8 3rd gen.

deterioration of the system when it is placed in the vicinity of the human body. The body loss is independent of the direction of communication, meaning that it has the same value no matter if the device is tested in the transmit or receive mode. Since this parameter, in our case, is defined as the difference between the power transmitted by the antenna in free space and that in the presence of a user, the actual power level at the port antenna is not important since it is the same in both cases and therefore is subtracted. Hence, body loss is a very useful tool for comparing earbuds based on their susceptibility to user presence.

The distribution of the mean, averaged across all volunteers, body loss at 2.406 GHz over the measured angles is shown in Figure 8. A higher body loss value means that the

user has a stronger impact on the antenna performance. A negative body loss means that in a certain direction, the radiation is higher in the presence of a user than for free space. As one can see, large variations in the body loss among the earbuds are observed.

Table 3 shows the measured body loss for each earbud. The standard deviation is the same as for the TRP measurements in presence of a volunteer (see Table 2). In terms of mean value, Apple AirPods 2 shows the lowest body loss at both frequencies, while Earin M2 has the highest one at 2.406 GHz and Beoplay E8 3rd Gen at 2.476 GHz. The largest difference in the mean body loss across devices is 3 dB. At 2.406 GHz, (1) Bose soundport free has 3 dB minimum body loss while Apple AirPods 2 and Beoplay E8 3rd Gen

TABLE 2: Measured TRP when each earbud is placed in the right ear of the volunteer.

Earbud	TRP (dBm)					
	2.406 GHz			2.476 GHz		
	Min	Mean $\pm$ std	Max	Min	Mean $\pm$ std	Max
Beoplay E8 2.0	-16.7	-12.1 $\pm$ 2.5	-8.9	-16.5	-11.4 $\pm$ 2.4	-8.2
Earin M2	-14.2	-8.3 $\pm$ 2.2	-5.3	-14.7	-11.2 $\pm$ 1.6	-8.6
Bose soundsport free	-5.7	-5.0 $\pm$ 0.5	-4.3	-5.6	-2.8 $\pm$ 1.1	-1.3
Apple airpods 2	-5.6	-3.5 $\pm$ 1.2	-2.2	-3.9	-1.5 $\pm$ 1.1	-0.3
Beoplay E8 3rd gen	-9.0	-6.4 $\pm$ 1.7	-3.9	-6.0	-3.4 $\pm$ 1.9	0.0

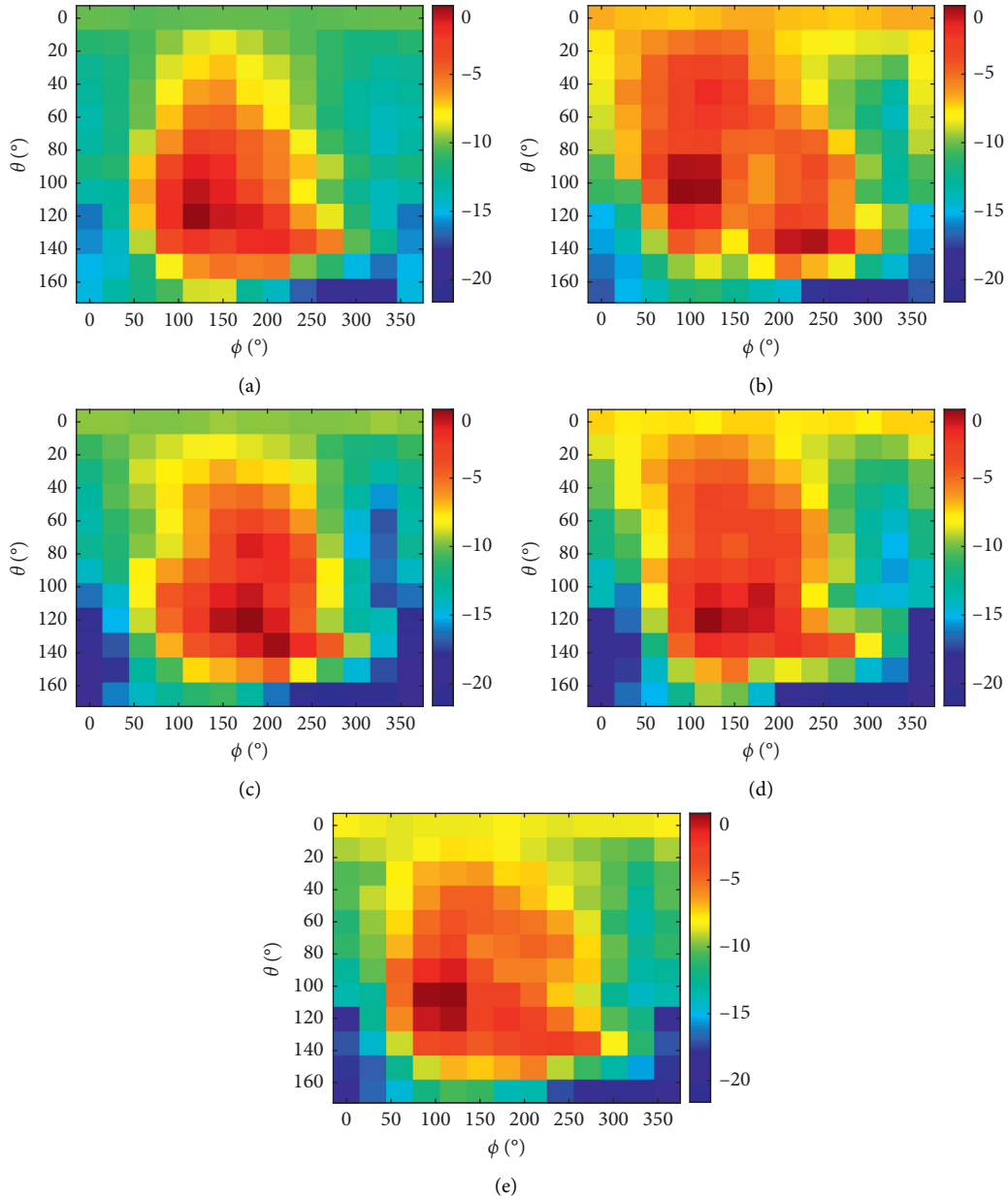


FIGURE 7: Normalized mean measured EIRP (in dB) radiation pattern of the right-side earbud, when placed in the right ear of the volunteer, measured at 2.406 GHz: (a) Beoplay E8 2.0; (b) Earin M2; (c) Bose soundsport free; (d) Apple airpods 2; (e) Beoplay E8 3rd gen.

have 1 dB and (2) Earin M2 has 12 dB maximum body loss compared with 5 dB for the Bose soundsport free and Apple Airpods 2. At 2.476 GHz, (1) Beoplay E8 2.0 has 2 dB

minimum body loss while Bose soundsport free has 4 dB and (2) Beoplay E8 2.0 has 10 dB maximum body loss compared with 6 dB for Apple Airpods 2. Differences between max



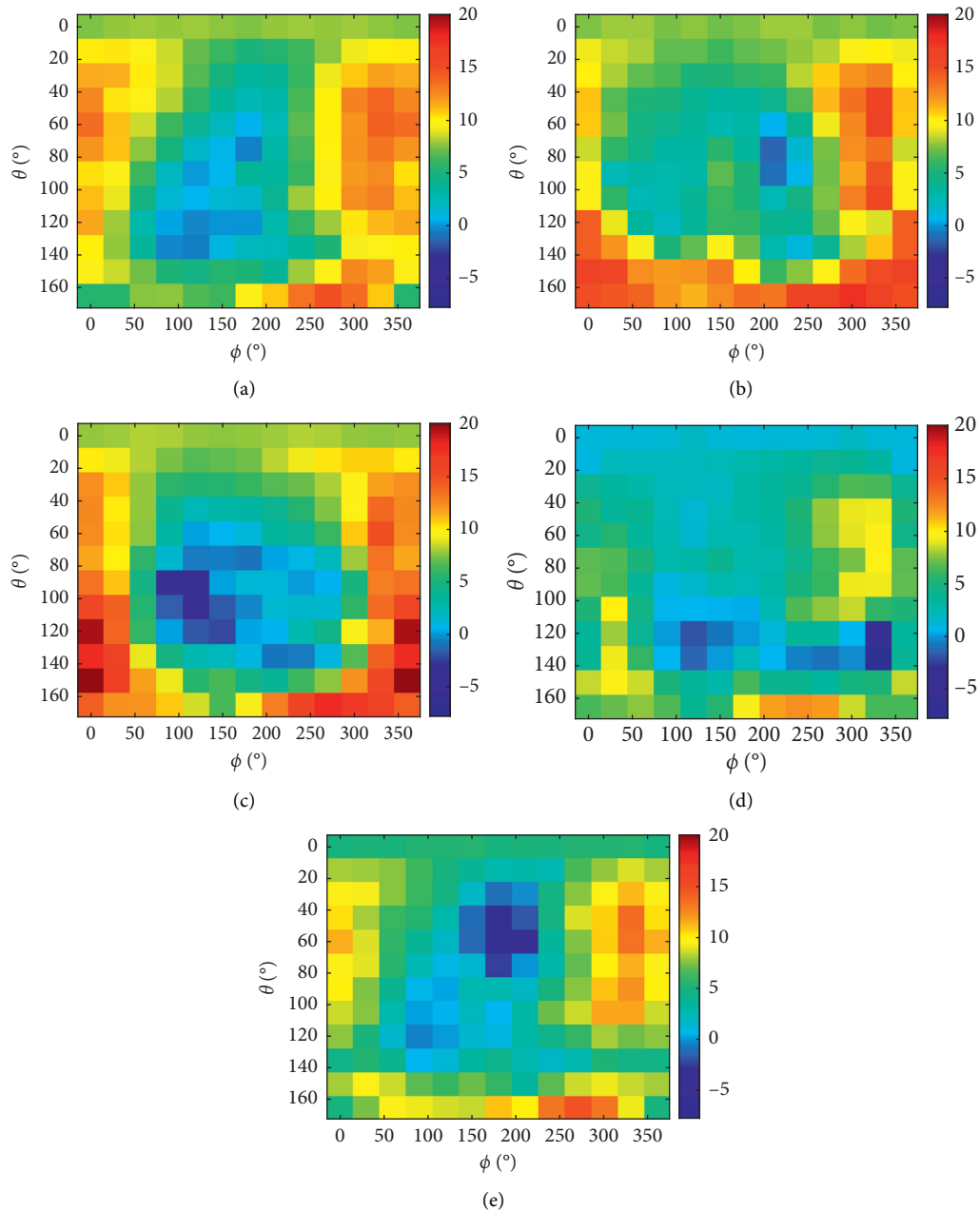


FIGURE 8: Mean body loss pattern (in dB) at 2.406 GHz: (a) Beoplay E8 2.0; (b) Earin M2; (c) Bose soundsport free; (d) Apple airpods 2; (e) Beoplay E8 3rd gen.

TABLE 3: Results for the evaluated body loss for the earbuds.

Earbud	Body loss (dB)					
	2.406 GHz			2.476 GHz		
	Min	Mean	Max	Min	Mean	Max
Beoplay E8 2.0	1.7	4.9	9.5	1.7	5.0	10.0
Earin M2	2.8	5.8	11.7	3.0	5.6	9.1
Bose soundsport free	3.1	3.8	4.5	3.6	5.1	7.9
Apple airpods 2	1.2	2.5	4.6	2.6	3.8	6.2
Beoplay E8 3rd gen	1.3	3.9	6.4	2.7	6.2	8.7

and min values of up to 9 dB at 2.406 GHz and up to 8 dB at 2.476 GHz are observed.

From Figure 6, it can be seen that the antenna design for the Apple Airpods 2 is more directional, when measured in free space, than the other devices tested. The direction of maximum radiation for the Apple Airpods 2 is away from the intended user, as shown in Figure 6(d). Looking at Figure 7, it is found that all tested devices show similar in shape radiation patterns when measured in the presence a volunteer. The directionality of the radiation can here be attributed to the body shadowing of the volunteers. Comparing Figures 6 and 7, it is evidently seen that the Apple Airpods 2 device is least affected by the user body when radiation characteristics are considered. This is also

supported by the results listed in Table 2, where the Apple AirPods 2 shows the lowest mean body loss value.

Taken all together, most of the earbuds show higher body loss at higher frequencies, i.e., the antenna performance is more affected at the high end of the Bluetooth spectrum.

## 5. Conclusion

In this paper, an extensive comparative study of the performance of five popular earbuds is presented. The measurements are based on the participation of 12 volunteers, which provides for a reasonably large data set, and therefore it is possible to present a representative finding of user body impact on the earbud's performance.

Measurements of the transmit capabilities of the earbuds in free space and when placed in a person's right ear, have been conducted over two 8 MHz bands centered at 2.406 GHz and 2.476 GHz. Most of the earbuds have a higher radiated power at the lower frequency. The biggest observed difference in the TRP between the low and high frequency band is 5 dB in free space and 3 dB (using the mean values) in the presence of a person. The larger-sized earbuds demonstrate a lower variation in TRP in the presence of a person. The user presence alters the radiation patterns and thereby significantly reduces the differences between the earbuds in that regard. In free space and in the presence of a user, each earbud demonstrates similar radiation patterns at the low and high ends of the Bluetooth spectrum.

In order to assess the user impact on antenna performance, the body loss parameter has been evaluated. The difference in the body loss among the earbuds is due to the different antenna designs and placements. The largest difference in mean body loss found between the two frequencies is less than 2.5 dB. The lowest body loss measured is 1 dB while the highest one is 12 dB.

## Data Availability

The data used to support the findings of this study can be obtained from Dr. Zhekov at e-mail: stz@es.aau.dk.

## Conflicts of Interest

The authors declare that they have no conflicts of interest.

## Acknowledgments

The authors would like to thank Mr. Kristian Bank for his great help with all the measurements. Also, the authors would like to thank all volunteers participating in the measurement campaign. This research was in part internally funded and in part funded by a Wireless Industrial Company.

## References

- [1] S. Higginbotham, "Now hear this," *IEEE Spectrum*, vol. 56, no. 4, p. 21, 2019.
- [2] L. J. Chu, "Physical limitations of omni-directional antennas," *Journal of Applied Physics*, vol. 19, no. 12, pp. 1163–1175, 1948.
- [3] A. D. Yaghjian and S. R. Best, "Impedance, bandwidth, and Q of antennas," *IEEE Transactions on Antennas and Propagation*, vol. 53, no. 4, pp. 1298–1324, 2005.
- [4] X. L. Chen, N. Chavannes, G. H. Ng, Y. S. Tay, and J. Mosig, "Analysis and design of mobile device antenna-speaker integration for optimum over-the-air performance," *IEEE Antennas and Propagation Magazine*, vol. 57, no. 1, pp. 97–109, 2015.
- [5] A. Ruaro, J. Thaysen, and K. B. Jakobsen, "Battery coupling impact on the antenna efficiency in a small wearable device," in *Proceedings of the 2015 Loughborough Antennas & Propagation Conference (LAPC)*, pp. 1–4, IEEE, Loughborough, UK, November 2015.
- [6] Z. Li, G. Shaker, M. Nezhad-Ahmadi, and S. Safavi-Naeini, "Design of a miniaturized antenna for bluetooth-enabled hearing aid devices," in *Proceedings of the 2015 IEEE International Symposium on Antennas and Propagation & USNC/URSI National Radio Science Meeting*, pp. 772–773, IEEE, Vancouver, Canada, July 2015.
- [7] J. Toftgard, S. N. Hornsleth, and J. B. Andersen, "Effects on portable antennas of the presence of a person," *IEEE Transactions on Antennas and Propagation*, vol. 41, no. 6, pp. 739–746, 1993.
- [8] M. Okoniewski and M. A. Stuchly, "A study of the handset antenna and human body interaction," *IEEE Transactions on Microwave Theory and Techniques*, vol. 44, no. 10, pp. 1855–1864, 1996.
- [9] M. A. Jensen and Y. Rahmat-Samii, "The electromagnetic interaction between biological tissue and antennas on a transceiver handset," in *Proceedings of IEEE Antennas and Propagation Society International Symposium and URSI National Radio Science Meeting*, vol. 1, pp. 367–370, IEEE, Seattle, WA, USA, June 1994.
- [10] G. F. Pedersen, K. Olesen, and S. L. Larsen, "Bodyloss for handheld phones," in *Proceedings of the 1999 IEEE 49th Vehicular Technology Conference*, vol. 1, pp. 1580–1584, IEEE, Houston, TX, USA, May 1999.
- [11] G. A. Conway, W. G. Scanlon, C. Orlenius, and C. Walker, "In situ measurement of UHF wearable antenna radiation efficiency using a reverberation chamber," *IEEE Antennas and Wireless Propagation Letters*, vol. 7, pp. 271–274, 2008.
- [12] S. S. Zhekov and G. F. Pedersen, "Over-the-air evaluation of the antenna performance of popular mobile phones," *IEEE Access*, vol. 7, pp. 123195–123201, 2019.
- [13] A. Ruaro, J. Thaysen, and K. B. Jakobsen, "Wearable shell antenna for 2.4 GHz hearing instruments," *IEEE Transactions on Antennas and Propagation*, vol. 64, no. 6, pp. 2127–2135, 2016.
- [14] S. S. Zhekov, A. Tatomirescu, O. Franek, and G. F. Pedersen, "Study of the interaction user head-ultrawideband mimo antenna array for mobile terminals," in *Proceedings of the 2016 International Conference on Electromagnetics in Advanced Applications (ICEAA)*, pp. 930–933, IEEE, Cairns, Australia, September 2016.
- [15] P. Salonen, Y. Rahmat-Samii, and M. Kivikoski, "Wearable antennas in the vicinity of human body," in *Proceedings of the IEEE Antennas and Propagation Society Symposium*, vol. 1, pp. 467–470, IEEE, Monterey, CA, USA, June 2004.
- [16] K.-L. Wong and C.-I. Lin, "Characteristics of a 2.4 GHz compact shorted patch antenna in close proximity to a lossy medium," *Microwave and Optical Technology Letters*, vol. 45, no. 6, pp. 480–483, 2005.
- [17] C. Mendes and C. Peixeiro, "A dual-mode single-band wearable microstrip antenna for body area networks," *IEEE*

- Antennas and Wireless Propagation Letters*, vol. 16, pp. 3055–3058, 2017.
- [18] K.-L. Wong, M.-R. Hsu, W.-Y. Li, S.-W. Su, and A. Chen, “Study of the bluetooth headset antenna with the user’s head,” *Microwave and Optical Technology Letters*, vol. 49, no. 1, pp. 19–23, 2007.
- [19] Z. Li, G. Shaker, M. Nezhad-Ahmadi, and S. Safavi-Naeini, “Antenna design methodology for ear-to-ear/ear-to-remote communications,” in *Proceedings of the 2017 IEEE International Symposium on Antennas and Propagation & USNC/URSI National Radio Science Meeting*, pp. 1165–1166, IEEE, San Diego, CA, USA, July 2017.
- [20] N. P. I. Kammersgaard, S. H. Kvist, J. Thaysen, and K. B. Jakobsen, “In-the-ear spiral monopole antenna for hearing instruments,” *Electronics Letters*, vol. 50, no. 21, pp. 1509–1511, 2014.
- [21] M. U. Rehman, Y. Gao, Z. Wang et al., “Investigation of on-body bluetooth transmission,” *IET Microwaves, Antennas & Propagation*, vol. 4, no. 7, pp. 871–880, 2010.
- [22] S. H. Kvist, S. Özden, J. Thaysen, and K. B. Jakobsen, “Improvement of the ear-to-ear path gain at 2.45 GHz using parasitic antenna element,” in *Proceedings of the 2012 6th European Conference on Antennas and Propagation (EUCAP)*, pp. 944–947, IEEE, Prague, Czech Republic, March 2012.
- [23] S. H. Kvist, J. Thaysen, and K. B. Jakobsen, “Polarization of unbalanced antennas for ear-to-ear on-body communications at 2.45 GHz,” in *Proceedings of the 2011 Loughborough Antennas & Propagation Conference*, pp. 1–4, IEEE, Loughborough, UK, November 2011.
- [24] W. H. Yatman, L. K. Larsen, S. H. Kvist, J. Thaysen, and K. B. Jakobsen, “In-the-ear hearing-instrument antenna for ism-band body-centric ear-to-ear communications,” in *Proceedings of the 2012 Loughborough Antennas & Propagation Conference (LAPC)*, pp. 1–4, IEEE, Loughborough, UK, November 2012.
- [25] Z. Zahid, H. Lee, M. Kim, H.-H. Kim, and H. Kim, “Antenna design using speaker wire for a bluetooth ear set,” *Microwave and Optical Technology Letters*, vol. 61, no. 3, pp. 747–752, 2019.
- [26] J. Ryckaert, P. De Doncker, R. Meys, A. de Le Hoye, and S. Donnay, “Channel model for wireless communication around human body,” *Electronics Letters*, vol. 40, no. 9, pp. 543–544, 2004.
- [27] B. Zhen, M. Kim, J. Takada, and R. Kohno, “Characterization and modeling of dynamic on-body propagation at 4.5 GHz,” *IEEE Antennas and Wireless Propagation Letters*, vol. 8, pp. 1263–1267, 2009.
- [28] D. B. Smith, L. W. Hanlen, J. Zhang, D. Miniutti, D. Rodda, and B. Gilbert, “First- and second-order statistical characterizations of the dynamic body area propagation channel of various bandwidths,” *Annals of Telecommunications—Annales Des Télécommunications*, vol. 66, no. 3–4, pp. 187–203, 2011.
- [29] S. L. Cotton, “A statistical model for shadowed body-centric communications channels: theory and validation,” *IEEE Transactions on Antennas and Propagation*, vol. 62, no. 3, pp. 1416–1424, 2014.
- [30] CTIA Version, *Test Plan for Wireless Device Over-the-air Performance*, CTIA Version 3.8.1, Washington, DC, USA, 2018.
- [31] Federal Communications Commission, “FCC ID database,” Washington, DC, USA, 2021, <https://fccid.io/>.