

Scattering of entropy waves into sound by isolated aerofoils

Juan Guzmán-Iñigo^{1,†}, Ignacio Durán² and A.S. Morgans¹

¹Dept. of Mechanical Engineering, Imperial College London, London SW7 2AZ, UK

²Reaction Engines Ltd, Building D5, Culham Science Centre, Abingdon OX14 3DB, UK

(Received 8 December 2020; revised 14 May 2021; accepted 21 June 2021)

This article presents a modelling approach to predict the low-frequency sound generated by entropy fluctuations interacting with isolated aerofoils. A model of the acoustic field is obtained based on a linearisation of the compressible Euler equations about a steady, potential, compressible mean flow. Mean flow variations of velocity and density are accounted for in the source term, but are neglected in the sound propagation. Using a Lorentz-type transformation, the problem is reduced to solving a Helmholtz equation. This equation is recast in integral form and a solution is obtained using a compact Green's function method. This approach places no restrictions on the entropy wavelength, while assuming that the acoustic wavelength is large compared to the profile chord and spacing. The source term is further simplified by assuming that the steady flow is a small perturbation to a uniform flow. The model is illustrated using a symmetric aerofoil and its performance is assessed against numerical simulations of the compressible Euler equations. Good agreement is found for all the frequencies of validity of the theory and for all the range of subsonic Mach numbers. The solution for a symmetric aerofoil interacting with plane entropy waves corresponds to the combination of a dipole along the horizontal axis and a monopole. The dipole originates from the unsteady drag experienced by the aerofoil owing to the fluctuations of density and the monopole from the strong local acceleration of the flow at the leading edge. The monopole term becomes negligible for low Mach numbers.

Key words: aeroacoustics

1. Introduction

Combustors in gas turbine engines present two sources of noise associated with the combustion process (Dowling & Mahmoudi 2015; Ihme 2017; Tam *et al.* 2019): (i) direct

† Email address for correspondence: j.guzman-inigo@imperial.ac.uk

© The Author(s), 2021. Published by Cambridge University Press. This is an Open Access article, distributed under the terms of the Creative Commons Attribution licence (<http://creativecommons.org/licenses/by/4.0/>), which permits unrestricted re-use, distribution, and reproduction in any medium, provided the original work is properly cited.

combustion noise and (ii) indirect combustion noise. The first component designates the generation of pressure fluctuations arising from unsteady heat released by the flame. Unsteady combustion also generates flow perturbations in the form of temperature, vorticity and mixture-composition inhomogeneities. These perturbations, which are silent while advected by a uniform flow (Chu & Kovásznyai 1958), generate further sound when accelerated/decelerated (Marble & Candel 1977; Bake *et al.* 2009). This second source of noise is termed indirect combustion noise and can be further classified into three subcomponents depending on the flow perturbation causing it: (i) entropy noise (Marble & Candel 1977; Bake *et al.* 2009), (ii) vortex noise (Kings & Bake 2010) and (iii) compositional noise (Strahle 1976; Magri, O'Brien & Ihme 2016; Ihme 2017). Entropy noise is believed to be the dominant component (Morgans & Duran 2016) and, consequently, has been the focus of most research on indirect combustion noise. The present paper deals with entropy noise as the main component of indirect combustion noise.

Indirect combustion noise contributes to the total exhaust noise of aeroengines, via the downstream propagating component (Leyko, Nicoud & Poinot 2009; Duran *et al.* 2014; Tam, Li & Schuster 2016). It also modifies the stability of the combustor, via the upstream propagating component (Goh & Morgans 2013; Morgans & Duran 2016). Thermoacoustic instabilities (Candel 2002; Lieuwen 2003) arise from the two-way coupling between acoustic disturbances and heat release within the combustion chamber. They lead to large amplitude self-excited oscillations which have the potential to cause severe structural damage to the combustion chamber and the turbine. Therefore, predicting and suppressing combustion instabilities at an early design stage is a priority. To correctly assess the stability of a combustor, indirect combustion noise generated by flow inhomogeneities going through the nozzle guide vanes (NGVs) at the exit of the combustion chamber must be accurately described.

The generation of entropy noise comprises three stages that can be studied and modelled separately. First, incompressible temperature fluctuations, the so-called entropy waves, are generated at the flame by an unsteady heat release rate (Bragg 1963; Strahle 1978; Dowling 1995). Karimi, Brear & Moase (2008) showed that one-dimensional, non-diffusive flows with heat communication behave as low-pass filters when excited by an unsteady heat release rate: an effective cutoff frequency exists, below which significant entropy generation occurs and above which entropy generation diminishes. Yoon (2020) found that the entropic cutoff frequency is inversely proportional to the flame residence time. Entropy generation has been the subject of recent investigations using low-order models (Chen, Bomberg & Polifke 2016), numerical simulations (Semlitsch *et al.* 2019) and experimental measurements (Wang *et al.* 2019; Weilenmann *et al.* 2020a).

Second, entropy waves advect towards the combustor exit and are dissipated and dispersed in the process (Sattelmayer 2003; Morgans, Goh & Dahan 2013). At low frequencies, diffusion was found to be negligible and shear dispersion arising from the velocity profile was found to be the main mechanism in the decay of entropy waves (Morgans *et al.* 2013; Giusti *et al.* 2017; Xia *et al.* 2018). Fattahi, Hosseinalipour & Karimi (2017) studied numerically the dissipation of entropy waves in a turbulent channel flow and showed that the high-frequency components are always strongly damped. This result was further supported by experimental results in a circular duct (Hosseinalipour *et al.* 2020). The latter study also showed that the components of the entropy wave with convective wavelengths longer than the duct-diameter remain highly coherent throughout the duct, which supports the use of one-dimensional entropy noise models. At higher frequencies, the spatial correlation of the waves was lost. Christodoulou *et al.* (2020) developed a

low-order model that accounts for variable shapes and amplitudes of entropy waves. The recent experimental work of Weilenmann, Xiong & Noiray (2020*b*) suggests the need for low-order models that also describe dispersion effects owing to turbulent coherent structures. This was shown numerically by Xia *et al.* (2018).

A common conclusion of the studies on both generation and transport is the low-frequency nature of the waves reaching the end of the combustor. In a recent experiment by Greifenstein *et al.* (2020), the combined effect of both phenomena in a realistic combustor was studied. The study revealed the strong influence of a central precessing vortex core on the entropy profiles measured at the exit of the combustor.

Finally, the entropy waves that reach the exit of the combustor are accelerated and generate noise in the process. In gas turbines and aeroengines, the acceleration occurs through the turbine blade rows, while in lab-scale experiments, the acceleration is often provided by a nozzle flow. The case of interest for this paper is the former, but for the sake of completeness we offer a brief review of the state-of-the-art of entropy noise generated by nozzle flows. The seminal theory of Marble & Candel (1977) presents analytical transfer functions for the entropy noise generated in the zero-frequency limit assuming a quasi-one-dimensional and isentropic flow. This model was extended to higher frequencies by Moase, Brear & Manzie (2007), Giauque, Huet & Clero (2012), Stow, Dowling & Hynes (2002) and Goh & Morgans (2011). Finally, the Magnus expansion of Duran & Moreau (2013) generalised the model to be valid at any frequency. This was later extended to circumferential waves by Duran & Morgans (2015). In the mid-frequencies, three-dimensional effects become apparent and must be described by the model (Emmanuelli *et al.* 2020; Huet, Emmanuelli & Le Garrec 2020). Further extensions of the quasi-one-dimensional theory include nonlinear effects (Huet & Giauque 2013), compositional inhomogeneities (Magri *et al.* 2016; Magri 2017) and non-isentropic effects (De Domenico, Rolland & Hochgreb 2019).

We now turn our attention to the entropy noise generated by blades. To solve this problem, Cumpsty & Marble (1977*b, a*) proposed an actuator disk method which considers flow fluctuations to be plane both upstream and downstream of the blade row undergoing a discontinuous jump of strength through it. This approach is based on the assumption that the entropy wavelength is large compared to the length of the blade and neglects the details of the mean flow (compact assumption). Mishra & Bodony (2013) and Leyko *et al.* (2014) compared the results of this theory with numerical simulations, which showed that disk actuator theory is only valid at low frequencies. Despite this limitation, disk actuator theory represents the current state-of-the-art for predicting the sound field generated by the interaction of entropy waves with blades. The theory was further extended to rotor cascades by Bauerheim *et al.* (2016).

In parallel to disk actuator models, a theory of entropy noise was developed using acoustic analogies combined with the Green's function method (Morfey 1973; Ffowcs Williams & Howe 1975; Howe 1975, 2010; Yang, Guzmán-Iñigo & Morgans unpublished observations). This approach however is intrinsically limited to low-Mach-number flows, with entropy noise being important in the high-Mach-number regime. As an alternative to acoustic analogies, Bodony (2009) proposed a model based on rapid distortion theory (Goldstein 1978) and the Green's function method. Rapid distortion theory, which recast the problem as an inhomogeneous wave equation with a source term, is an exact rearrangement of the linearised compressible Euler equations. It has been widely used to describe high-frequency vortical noise for isolated aerofoils (Kerschen & Myers 1987; Tsai 1992; Myers & Kerschen 1995, 1997) and cascades (Peake & Kerschen 1997, 2004). The aforementioned models account for entropy perturbations, but the low-frequency nature

of entropy noise renders them of no use in practice. Recently, Baddoo & Ayton (2020) developed a solution for cascades of blades valid at low-to-moderate frequencies. This approach was extended to account for compositional perturbations by Guzmán-Iñigo *et al.* (2019). The Baddoo and Ayton model assumes that the mean flow is a small perturbation to a uniform flow. This assumption, which is valid for compressor and fan cascades, is too restrictive for turbine cascades where the favourable pressure gradient allows for larger angles of attack, cambers and thickness of the aerofoils.

In this paper, we build on Bodony’s approach and combine rapid distortion theory with a compact Green’s function (Howe 1975). Bodony (2009) assumed the Mach number to be small and neglected the effect of the mean flow in the propagation of sound. The model was then used to propose a qualitative interpretation of the underlying physical mechanism, but no quantitative validation was provided. The contributions of this paper are twofold. First, we introduce the Born approximation (Snieder & Van Wijk 2015, Ch. 23) to simplify the governing equations. This simplification allows a Green’s function to be obtained that, using a Lorentz-type transformation, accounts for the effect of the mean flow even at subsonic Mach numbers close to unity. For thin aerofoils, this solution is valid for low-to-moderate frequencies and any subsonic Mach number. If the aerofoil is thicker or its camber or angle of attack is large, the proposed solution is still valid at the expense of the range of validity in frequency and Mach number. Second, we simplify the source term using thin-aerofoil theory and obtain a closed form solution by numerically integrating the different terms. This solution is compared with numerical simulations of the Euler equations, and show a very good agreement for a wide range of frequencies and Mach numbers.

This paper is organised as follows. In § 2, we introduce the governing equations of the problem. The acoustic propagation operator is simplified and an integral solution is proposed using the compact Green’s function method in § 3. In § 4, the source term is also simplified using thin-aerofoil theory and a solution is obtained for a symmetric Joukowski aerofoil in § 5. A summary of the results and conclusions are given in § 6.

2. Problem formulation

2.1. Configuration and governing equations

We consider the flow past a two-dimensional single aerofoil of semi-chord $b = c/2$, as sketched in figure 1. The flow is taken to be inviscid, non-heat-conducting and a compressible perfect gas. Neglecting volumetric forces, as well as thermal and mass diffusion the conservation of mass, momentum and energy can be written, respectively, as

$$\frac{\partial \rho}{\partial t} + \nabla \cdot (\rho \mathbf{U}) = 0, \quad \frac{\partial \mathbf{U}}{\partial t} + \mathbf{U} \cdot \nabla \mathbf{U} = -\frac{1}{\rho} \nabla p, \quad \frac{\partial s}{\partial t} + \mathbf{U} \cdot \nabla s = 0, \quad (2.1a-c)$$

where ρ is the density, p is the pressure, \mathbf{U} is the velocity, s is the specific entropy and t is the time.

We suppose that the flow upstream consists of a uniform component of velocity U_∞ , density ρ_∞ and speed of sound a_∞ , on which there is superimposed a small unsteady motion. Consequently, the flow can be decomposed into a steady mean, denoted by $(\cdot)_0$, and a perturbation component, denoted by $(\cdot)'$.

The equations governing the mean flow are

$$\nabla \cdot (\rho_0 \mathbf{U}_0) = 0, \quad \rho_0 \mathbf{U}_0 \cdot \nabla \mathbf{U}_0 = -\nabla p_0. \quad (2.2a,b)$$

Scattering of entropy waves into sound by aerofoils

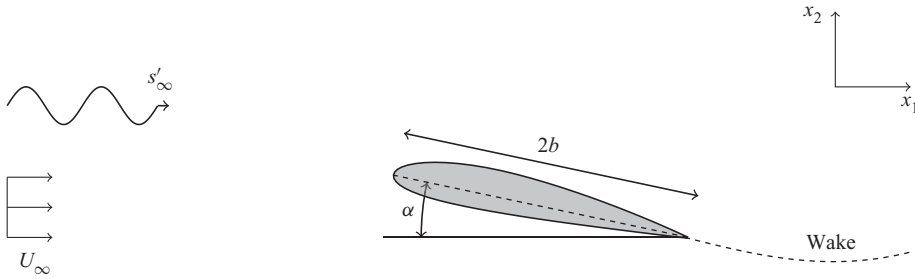


Figure 1. Aerofoil of semi-chord b at incidence angle α encountering a convected entropy disturbance.

The mean flow is also assumed homentropic, i.e. $s_0 = 0$, and irrotational, i.e. $\nabla \times \mathbf{U}_0 = 0$. Under the irrotational assumption, there exists a potential function such that $\mathbf{U}_0 = \nabla \Phi$. Furthermore, and because the flow is two-dimensional, we can define a compressible stream function Ψ as

$$\nabla \times (\rho_\infty \Psi \mathbf{e}_3) = \beta_\infty \rho_0 \mathbf{U}_0, \quad (2.3)$$

where the factor $\beta_\infty = \sqrt{1 - M_\infty^2}$ ($M_\infty = U_\infty/a_\infty$) corresponds to a Prandtl–Glauert transformation (Ashley & Landahl 1985) and \mathbf{e}_3 is the unit vector perpendicular to the x_1 – x_2 plane.

We assume that small-amplitude entropic disturbances are superimposed on the uniform flow (infinitely far upstream). These disturbances are convected downstream by the mean flow and interact with the aerofoil, which produces sound. Similar approaches have been employed (Myers 1987; Tsai 1992; Myers & Kerschen 1995, 1997) in modelling gust–blade interaction. Neglecting squares of small quantities and subtracting out the mean flow equations, we obtain that the dynamics of the perturbation part is governed by

$$\frac{D_0 \rho'}{Dt} + \rho' \nabla \cdot \mathbf{U}_0 + \nabla \cdot (\rho_0 \mathbf{u}') = 0, \quad (2.4a)$$

$$\frac{D_0 \mathbf{u}'}{Dt} + \mathbf{u}' \cdot \nabla \mathbf{U}_0 + \frac{\rho'}{\rho_0} \mathbf{U}_0 \cdot \nabla \mathbf{U}_0 = -\frac{1}{\rho_0} \nabla p', \quad (2.4b)$$

$$\frac{D_0 s'}{Dt} = 0, \quad (2.4c)$$

where $D_0/Dt = \partial/\partial t + \mathbf{U}_0 \cdot \nabla$ is the material derivative with respect to the local mean flow. The perturbation density, pressure and entropy are related by the Gibbs equation, which leads to

$$\frac{\rho'}{\rho_0} = \frac{p'}{\gamma p_0} - \frac{s'}{c_p}, \quad (2.5)$$

where γ is the ratio of the specific heat capacities of the gas at constant pressure c_p and constant volume c_v , i.e. $\gamma = c_p/c_v$.

2.2. Rapid distortion theory formulation

The generalisation of rapid distortion theory proposed by Goldstein (1978) provides a well-suited framework for solving (2.4). Goldstein (1978) showed that the analysis of the

perturbation dynamics can be reduced to solving a single inhomogeneous wave equation by introducing the following splitting of the perturbation velocity and pressure:

$$\mathbf{u}' = \nabla\phi + \mathbf{u}^{(H)} + \frac{s'}{2c_p} \mathbf{U}_0, \tag{2.6}$$

and

$$p' = -\rho_0 \frac{D_0\phi}{Dt}. \tag{2.7}$$

The perturbation velocity is represented as the sum of a component that is the gradient of an acoustic potential ϕ , a homogeneous component $\mathbf{u}^{(H)}$ and a term proportional to the perturbation entropy s' . The homogeneous component, $\mathbf{u}^{(H)}$, satisfies a modified form of the linearised momentum equation:

$$\frac{D_0\mathbf{u}^{(H)}}{Dt} + \mathbf{u}^{(H)} \cdot \nabla \mathbf{U}_0 = 0, \tag{2.8}$$

and s' satisfies the energy equation (2.4c). These equations can be integrated exactly using the method of characteristics if appropriate boundary conditions are provided (see § 2.3).

To determine the acoustic potential ϕ , (2.6), (2.7) and (2.5) are substituted into (2.4a) to obtain the following inhomogeneous, convective wave equation:

$$\frac{D_0}{Dt} \left(\frac{1}{a_0^2} \frac{D_0\phi}{Dt} \right) - \frac{1}{\rho_0} \nabla \cdot (\rho_0 \nabla \phi) = \frac{1}{\rho_0} \nabla \cdot (\rho_0 \mathbf{u}^{(H)}) - \frac{1}{2c_p} \frac{\partial s'}{\partial t}, \tag{2.9}$$

subject to boundary conditions

$$\nabla\phi \cdot \mathbf{n} = -\mathbf{u}^{(H)} \cdot \mathbf{n}, \quad \text{on } \Sigma, \tag{2.10a}$$

$$\phi \rightarrow 0, \quad \text{as } x_1 \rightarrow -\infty, \tag{2.10b}$$

where Σ is the surface of the aerofoil and a_0 is the local speed of sound of the mean flow.

The decomposition given by (2.6) and (2.7) greatly simplifies the problem: a coupled system of four partial differential equations (PDEs) is transformed into three fully decoupled PDEs ((2.8) and (2.4c)) together with a wave equation (2.9) coupled to the aforementioned ones only through the source term. The former equations can be integrated analytically, as explained in § 2.3, and an approximated solution to the latter is proposed in § 3.

2.3. Time-periodic entropy fluctuations

Equations (2.8) and (2.4c) can be integrated exactly using the method of characteristics if appropriate boundary conditions are provided. Here, we set a time-periodic entropic perturbation far upstream of the form:

$$s'_\infty/c_p = A_s \exp(i[k_1x_1 + k_2x_2 - \omega t]), \tag{2.11}$$

where k_1 and k_2 are the wavenumbers of the perturbation in x_1 and x_2 , respectively, and ω is the angular frequency. The relation $k_1 = \omega/U_\infty$ is satisfied. Equation (2.4c) can be

integrated to yield:

$$\frac{s'}{c_p} = A_s \exp(i(\mathbf{k} \cdot \mathbf{X} - \omega t)), \quad (2.12)$$

where $\mathbf{k} = (k_1, k_2)^\top$ and $\mathbf{X} = (X_\Phi, X_\Psi)^\top$ are vectors containing, respectively, the entropy wavenumbers and mean-flow Lagrangian coordinates:

$$X_\Phi = \frac{\Phi + g(\Phi, \Psi)}{U_\infty}, \quad X_\Psi = \frac{\Psi}{\beta_\infty U_\infty}, \quad (2.13a,b)$$

with

$$g(\Phi, \Psi) = \int_{-\infty}^{\Phi} \left[\frac{U_\infty^2}{U_0(\xi, \Psi)^2} - 1 \right] d\xi \quad (2.14)$$

as the drift function and U_0 is the magnitude of the velocity vector \mathbf{U}_0 . Note that the drift function g is singular along any streamline passing through a stagnation point.

Additionally, we assume that the disturbances of the mean flow far upstream of the body are purely entropic ($\mathbf{u}'_\infty = 0$). Using this assumption, the homogeneous components of the perturbation velocity, $\mathbf{u}^{(H)}$, are directly obtained in Lagrangian coordinates (Kerschen & Balsa 1981) as

$$\frac{u_t^{(H)}}{U_\infty} = -\frac{A_s}{2} \frac{U_\infty}{U_0} \exp(i(\mathbf{k} \cdot \mathbf{X} - \omega t)), \quad (2.15a)$$

$$\frac{u_n^{(H)}}{U_\infty} = -\beta_\infty \frac{A_s}{2} \frac{\rho_0 U_0}{\rho_\infty U_\infty} \frac{\partial g}{\partial \Psi} \exp(i(\mathbf{k} \cdot \mathbf{X} - \omega t)), \quad (2.15b)$$

with $u_t^{(H)}$ and $u_n^{(H)}$ denoting the velocity components parallel and normal to a streamline, respectively.

The source term of (2.9) can now be obtained as

$$\mathcal{S}(\mathbf{x}, t) = -\frac{1}{\rho_0} \nabla \cdot (\rho_0 \mathbf{u}^{(H)}) - \frac{i\omega}{2c_p} s' = \hat{\mathcal{S}}(\mathbf{x}; \omega) \exp(-i\omega t), \quad (2.16)$$

where

$$\begin{aligned} \hat{\mathcal{S}}(\Phi, \Psi; \omega) = & \frac{A_s}{2} \left[-2 \frac{U_\infty^2}{U_0} \frac{\partial U_0}{\partial \Phi} + 2\beta_\infty^2 \frac{\rho_0 U_0^2}{\rho_\infty^2} \frac{\partial \rho_0}{\partial \Psi} \frac{\partial g}{\partial \Psi} + \beta_\infty^2 \frac{\rho_0^2 U_0^2}{\rho_\infty^2} \frac{\partial^2 g}{\partial \Psi^2} + ik_1 U_\infty \right. \\ & \left. \times \left(\frac{U_\infty^2}{U_0^2} - 1 + \beta_\infty^2 \frac{\rho_0^2 U_0^2}{\rho_\infty^2 U_\infty^2} \frac{\partial g}{\partial \Psi} \frac{\partial g}{\partial \Psi} \right) + ik_2 \beta_\infty \frac{\rho_0^2 U_0^2}{\rho_\infty^2 U_\infty} \frac{\partial g}{\partial \Psi} \right] \exp(i\mathbf{k} \cdot \mathbf{X}). \end{aligned} \quad (2.17)$$

The time-harmonic dependence of the source term and boundary conditions of (2.9) allow us to write a solution in the form $\phi(\mathbf{x}, t) = \hat{\phi}(\mathbf{x}) \exp(-i\omega t)$. Introducing now the acoustic wavenumber $\kappa_0 = \omega/a_0$ and local Mach number $M_0 = U_0/a_0$, this equation can

be rewritten as

$$\left[\nabla^2 + (\kappa_0 + i\mathbf{M}_0 \cdot \nabla)^2 \right] \hat{\phi} + \mathcal{L}_0(\hat{\phi}) = \hat{S}, \tag{2.18}$$

with

$$\begin{aligned} \mathcal{L}_0(\hat{\phi}) = & \nabla \hat{\phi} \cdot (-\mathbf{M}_0 \cdot \nabla \mathbf{M}_0 + \nabla \ln \rho_0 + \mathbf{M}_0(\mathbf{M}_0 \cdot \nabla \ln a_0)) \\ & + i\hat{\phi}(\mathbf{M}_0 \cdot \nabla \kappa_0 - \kappa_0 \mathbf{M}_0 \cdot \nabla \ln a_0). \end{aligned} \tag{2.19}$$

Note that the sign of (2.9) has been reversed in (2.18), hence the definition of the source term in (2.16) as minus its right-hand side.

To set the context of the analysis, we now summarise the assumptions used up to this point. Viscous effects and, thus, the presence of boundary layers are neglected. Boundary layers are expected to enhance the shear of entropy waves close to the walls, especially in confined flows. Second, the magnitude of the entropic and acoustic waves is assumed to be small compared to the mean flow so that the governing equations can be linearised. The mean flow is assumed homentropic and irrotational. Finally, the mean flow is taken to be two-dimensional so that a streamfunction can be defined. This allows us to obtain the entropy distribution as in (2.12) and, thus, the source term given by (2.17).

3. Solution using the compact Green’s function

In this section, we obtain an approximate solution to (2.18) using the Green’s function method (Howe 1975, 2003). This equation has variable coefficients and further simplifications are required. In § 3.1, we simplify the acoustic propagation operator on the left-hand side using the Born approximation. An integral solution is then proposed in § 3.2.

3.1. Born approximation

Let us decompose the local Mach number and acoustic wavenumber on the left-hand side of (2.18) into an homogeneous and inhomogeneous part, such as

$$\mathbf{M}_0(\mathbf{x}) = M_\infty \mathbf{e}_1 + \mathbf{M}_\Delta(\mathbf{x}), \quad \kappa_0(\mathbf{x}) = \kappa_\infty + \kappa_\Delta(\mathbf{x}), \tag{3.1a,b}$$

where \mathbf{e}_1 denotes the unit vector in the x_1 -direction and $\kappa_\infty = \omega/a_\infty$ is the acoustic wavenumber in the far field. Equation (2.18) can now be recast as

$$\left[\nabla^2 + \left(\kappa_\infty + iM_\infty \frac{\partial}{\partial x_1} \right)^2 \right] \hat{\phi} + \mathcal{L}_\Delta(\hat{\phi}) = \hat{S}, \tag{3.2}$$

where the operator \mathcal{L}_Δ is given by

$$\mathcal{L}_\Delta(\cdot) = \left[(\kappa_\Delta + i\mathbf{M}_\Delta \cdot \nabla)^2 + 2(\kappa_\infty + iM_\infty \partial/\partial x_1)(\kappa_\Delta + i\mathbf{M}_\Delta \cdot \nabla) \right] (\cdot) + \mathcal{L}_0(\cdot). \tag{3.3}$$

This operator captures the effect of the mean-flow inhomogeneity on the acoustic propagation. If its effect is weak, we can neglect it and assume that the source term acts on the uniform portion of the mean flow, such that

$$\left[\nabla^2 + \left(\kappa_\infty + iM_\infty \frac{\partial}{\partial x_1} \right)^2 \right] \hat{\phi}_\infty = \hat{S}. \tag{3.4}$$

This approximation can be further improved by considering the effect of the inhomogeneity on the acoustic field as a second-order source term correction,

i.e. $\hat{\phi} = \hat{\phi}_\infty + \hat{\phi}_\Delta$, where $\hat{\phi}_\Delta$ satisfies

$$\left[\nabla^2 + \left(\kappa_\infty + iM_\infty \frac{\partial}{\partial x_1} \right)^2 \right] \hat{\phi}_\Delta = -\mathcal{L}_\Delta(\hat{\phi}_\infty). \quad (3.5)$$

The above is known as the first-order Born approximation (Snieder & Van Wijk 2015, Ch. 23). Chew (1995, Ch. 8) established the regime of validity of the Born approximation for the Helmholtz equation, and showed that it was especially pertinent at low frequencies. In Appendix A, we use a similar approach to show that the Born approximation limits of validity for (3.2) are given by

$$\begin{aligned} He^2 \delta\kappa^2 \ll 1, \quad He M_\infty \delta\kappa \delta M \ll 1, \quad M_\infty^2 \delta M^2 \ll 1, \quad He^2 \delta\kappa \ll 1, \\ He M_\infty \delta M \ll 1, \quad He M_\infty \delta\kappa \ll 1 \quad \text{and} \quad M_\infty^2 \delta M \ll 1, \end{aligned} \quad (3.6a-g)$$

where $\delta\kappa$ and δM represent the order of the normalised wavenumber and Mach number inhomogeneity, respectively, and $He = \omega b/a_\infty$ is the Helmholtz number. This shows that the Born approximation is perfectly suited to problems at low frequencies, low Mach numbers and with weak mean-flow inhomogeneities. In § 4, we simplify the source term by assuming that the mean flow is a small perturbation to a uniform flow. Equation (3.6a-g) shows that if this condition holds, the Born approximation is valid for any subsonic Mach number and for low-to-moderate frequencies. At high frequencies, the Born approximation is not suitable even for weak scatterers. This conclusion, which was obtained using simple dimensional analysis, was already postulated by Myers & Kerschen (1997) who showed the importance of accurately capturing the vortical-sound coupling between the leading and trailing edges to correctly predict the radiated far field at high frequencies. The present analysis also shows that this methodology can be used for aerofoils with larger thickness, camber or incoming angle of attack than those considered in the aforementioned studies, provided that the frequency and Mach number are sufficiently low.

To illustrate the solution method, we now consider the zeroth-order approximation, i.e. $\hat{\phi} = \hat{\phi}_\infty$. The first-order correction, $\hat{\phi}_\Delta$, can be obtained equivalently by accordingly replacing the source term in the following procedure. A Lorentz-type transformation of the form:

$$\left. \begin{aligned} \tilde{x}_1 = x_1/\beta_\infty, \quad \tilde{x}_2 = x_2, \quad \beta_\infty = \sqrt{1 - M_\infty^2}, \\ \tilde{\kappa}_\infty = \kappa_\infty/\beta_\infty, \quad \tilde{\phi} = \hat{\phi} \exp(i\tilde{\kappa}_\infty M_\infty \tilde{x}_1), \end{aligned} \right\} \quad (3.7)$$

is now used to transform (3.4) into the Helmholtz equation, that is

$$\left[\tilde{\nabla}^2 + \tilde{\kappa}_\infty^2 \right] \tilde{\phi} = \tilde{S}, \quad \tilde{S} = \hat{S} \exp(i\tilde{\kappa}_\infty M_\infty \tilde{x}_1). \quad (3.8a,b)$$

Equation (3.8a,b) has been widely studied and can be solved using techniques available in the literature. Here, we propose a solution using the compact Green's function approach (Howe 1975, 2003) as outlined in § 3.2.

3.2. Integral solution using the compact Green's function method

Consider the Green's function $G(\tilde{\mathbf{x}}, \tilde{\mathbf{y}})$ satisfying

$$\left[\tilde{\nabla}^2 + \tilde{\kappa}_\infty^2 \right] G(\tilde{\mathbf{x}}, \tilde{\mathbf{y}}) = \delta(\tilde{\mathbf{x}} - \tilde{\mathbf{y}}), \quad \frac{\partial G}{\partial \tilde{\mathbf{n}}} - i\tilde{\kappa}_\infty M_\infty \tilde{n}_1 G = 0, \quad \text{on } \Sigma, \quad (3.9a,b)$$

where δ is the Dirac delta function. The physical meaning of this Green's function is the solution owing to a point source of unit strength at a point $\tilde{\mathbf{y}}$, influenced by the surface Σ .

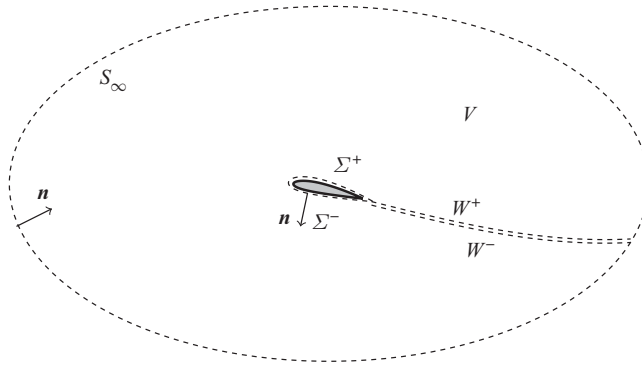


Figure 2. Schematic of the region V used in the derivation of the integral equation (3.10). Here, S is the surface bounding V : $S = \Sigma \cup S_\infty \cup W$.

In an unbounded fluid, this Green’s function must also satisfy the radiation condition that energy delivered to the fluid by the source radiates away from the source, i.e. the solution must exhibit outgoing wave behaviour.

Consider the closed surface S bounding the spatial domain V , as depicted in figure 2. This surface comprises three subsurfaces: $S = \Sigma \cup S_\infty \cup W$, where Σ and W are surfaces surrounding the aerofoil and the wake (the portion of the streamline that goes from the trailing edge to infinity downstream), respectively, and S_∞ is a surface very far from the aerofoil. We denote by \mathbf{n} the inward unit normal to S . Multiplying (3.8a,b) by the Green’s function defined by (3.9a,b) and integrating over the domain V , we obtain after some manipulations (see Appendix B) the following integral solution for the acoustic potential:

$$\begin{aligned} \tilde{\phi}(\tilde{\mathbf{x}}) = & \int_V G(\tilde{\mathbf{x}}, \tilde{\mathbf{y}}) \tilde{S}(\tilde{\mathbf{y}}) dV(\tilde{\mathbf{y}}) + \int_{\Sigma+W} G(\tilde{\mathbf{x}}, \tilde{\mathbf{y}}) \frac{\partial \hat{\phi}}{\partial \tilde{\mathbf{n}}}(\tilde{\mathbf{y}}) \exp(i\tilde{\kappa}_\infty M_\infty \tilde{y}_1) dS(\tilde{\mathbf{y}}) \\ & - \int_W \tilde{\phi}(\tilde{\mathbf{y}}) \left(\frac{\partial G}{\partial \tilde{\mathbf{n}}}(\tilde{\mathbf{x}}, \tilde{\mathbf{y}}) - i\tilde{\kappa}_\infty M_\infty \tilde{n}_1 G(\tilde{\mathbf{x}}, \tilde{\mathbf{y}}) \right) dS(\tilde{\mathbf{y}}). \end{aligned} \quad (3.10)$$

The integrals in S_∞ vanish (see Wu & Lee 1994). Along the wake, the source term can be singular, hence the acoustic potential can become discontinuous. The line integrals along the wake are retained to ensure the continuity of the pressure and normal velocity across it, as well as the Kutta condition at the trailing edge. In § 4, we show that in the thin-aerofoil limit this integral disappears. For simplicity’s sake, we neglect it hereafter. The integral term over Σ represents the contribution to the acoustic field generated to satisfy the slip boundary condition on the body. For convenience, the surface Σ is further decomposed into two surfaces: $\Sigma = \Sigma^+ \cup \Sigma^-$, where Σ^+ and Σ^- denote the upper and lower side of the aerofoil, respectively, going from the leading to the trailing edge.

An approximate solution to (3.9a,b) (to order $(\tilde{\kappa}_\infty b)^2$) is given by the compact Green’s function approach of Howe (1975, 2003) as

$$G(\tilde{\mathbf{x}}, \tilde{\mathbf{y}}; \omega) = -\frac{i}{4} \left[\mathcal{H}_0^{(1)}(\tilde{\kappa}_\infty |\tilde{\mathbf{x}}|) + \mathcal{H}_1^{(1)}(\tilde{\kappa}_\infty |\tilde{\mathbf{x}}|) \tilde{\kappa}_\infty \frac{\tilde{x}_j Y_j(\tilde{\mathbf{y}})}{|\tilde{\mathbf{x}}|} \right], \quad (3.11)$$

for an observer at $\tilde{\mathbf{x}}$ and source at $\tilde{\mathbf{y}}$. Here, $\mathcal{H}_0^{(1)}$ and $\mathcal{H}_1^{(1)}$ are the Hankel functions of the first kind for the zeroth and first order, respectively. The double index $j = 1, 2$

implies summation. The Kirchhoff vector $Y_j \equiv y_j - \varphi_j^*(\tilde{\mathbf{y}})$ satisfies

$$\tilde{\nabla}^2 Y_j = 0, \tag{3.12}$$

subject to

$$\frac{\partial Y_j}{\partial \tilde{\mathbf{n}}} - i\tilde{\kappa}_\infty M_\infty Y_j \tilde{n}_1 = 0, \quad \text{on } \Sigma. \tag{3.13}$$

The function $\varphi_j^*(\tilde{\mathbf{y}})$ represents the effect of the solid boundary on the acoustic response (see Howe 2003 for a detailed description). Any acoustic source placed far from the aerofoil will be virtually not affected by it. To reflect this, we require that $\varphi_j^*(\tilde{\mathbf{y}})$ decays with distance from Σ .

The acoustic potential field is then obtained by substituting the compact Green's function given by (3.11) into (3.10) to yield:

$$\begin{aligned} \hat{\phi}(\tilde{\mathbf{x}}) = & \frac{-i}{4} \left[\mathcal{H}_0^{(1)}(\tilde{\kappa}_\infty|\tilde{\mathbf{x}}|) \left(\int_V \tilde{S}(\tilde{\mathbf{y}}) dV(\tilde{\mathbf{y}}) + \int_\Sigma \frac{\partial \hat{\phi}}{\partial \tilde{\mathbf{n}}}(\tilde{\mathbf{y}}) \exp(i\tilde{\kappa}_\infty M_\infty \tilde{y}_1) dS(\tilde{\mathbf{y}}) \right) \right. \\ & \left. + \tilde{\kappa}_\infty \frac{\tilde{x}_j}{|\tilde{\mathbf{x}}|} \mathcal{H}_1^{(1)}(\tilde{\kappa}_\infty|\tilde{\mathbf{x}}|) \left(\int_V Y_j(\tilde{\mathbf{y}}) \tilde{S}(\tilde{\mathbf{y}}) dV(\tilde{\mathbf{y}}) + \int_\Sigma Y_j(\tilde{\mathbf{y}}) \frac{\partial \hat{\phi}}{\partial \tilde{\mathbf{n}}}(\tilde{\mathbf{y}}) \exp(i\tilde{\kappa}_\infty M_\infty \tilde{y}_1) dS(\tilde{\mathbf{y}}) \right) \right]. \end{aligned} \tag{3.14}$$

All the terms involving the observer position are moved outside of the integrals in (3.14) and, thus, the acoustic potential can be expressed as a linear combination of three basic components:

$$\hat{\phi}(\tilde{\mathbf{x}}) = \alpha_0 \phi_0(\tilde{\mathbf{x}}) + \alpha_1 \phi_1(\tilde{\mathbf{x}}) + \alpha_2 \phi_2(\tilde{\mathbf{x}}), \tag{3.15}$$

with

$$\alpha_0 = \int_V \tilde{S}(\tilde{\mathbf{y}}) dV(\tilde{\mathbf{y}}) + \int_\Sigma \frac{\partial \hat{\phi}}{\partial \tilde{\mathbf{n}}}(\tilde{\mathbf{y}}) \exp(i\tilde{\kappa}_\infty M_\infty \tilde{y}_1) dS(\tilde{\mathbf{y}}), \tag{3.16a}$$

$$\alpha_j = \tilde{\kappa}_\infty \left(\int_V Y_j(\tilde{\mathbf{y}}) \tilde{S}(\tilde{\mathbf{y}}) dV(\tilde{\mathbf{y}}) + \int_\Sigma Y_j(\tilde{\mathbf{y}}) \frac{\partial \hat{\phi}}{\partial \tilde{\mathbf{n}}}(\tilde{\mathbf{y}}) \exp(i\tilde{\kappa}_\infty M_\infty \tilde{y}_1) dS(\tilde{\mathbf{y}}) \right), \tag{3.16b}$$

and

$$\phi_0(\tilde{\mathbf{x}}) = -\frac{i}{4} \left[\mathcal{H}_0^{(1)}(\tilde{\kappa}_\infty|\tilde{\mathbf{x}}|) \right] \exp(-i\tilde{\kappa}_\infty M_\infty \tilde{x}_1), \tag{3.17a}$$

$$\phi_j(\tilde{\mathbf{x}}) = -\frac{i}{4} \left[\frac{\tilde{x}_j}{|\tilde{\mathbf{x}}|} \mathcal{H}_1^{(1)}(\tilde{\kappa}_\infty|\tilde{\mathbf{x}}|) \right] \exp(-i\tilde{\kappa}_\infty M_\infty \tilde{x}_1), \tag{3.17b}$$

with $j = 1, 2$.

Figure 3 shows these three components which are a monopole, a dipole in the horizontal axis and a dipole in the vertical axis. The velocity potential field, $\hat{\phi}(\mathbf{x})$, will then depend on the geometry of the field through the weighting terms α_0 , α_1 and α_2 in (3.15). The three components are affected by the Doppler factor $\exp(-i\tilde{\kappa}_\infty M_\infty \tilde{x}_1)$, which causes the wavelength of the potential propagating in the forward direction to be shortened by the motion whereas the wavelength of the potential propagating in the rear direction is lengthened.

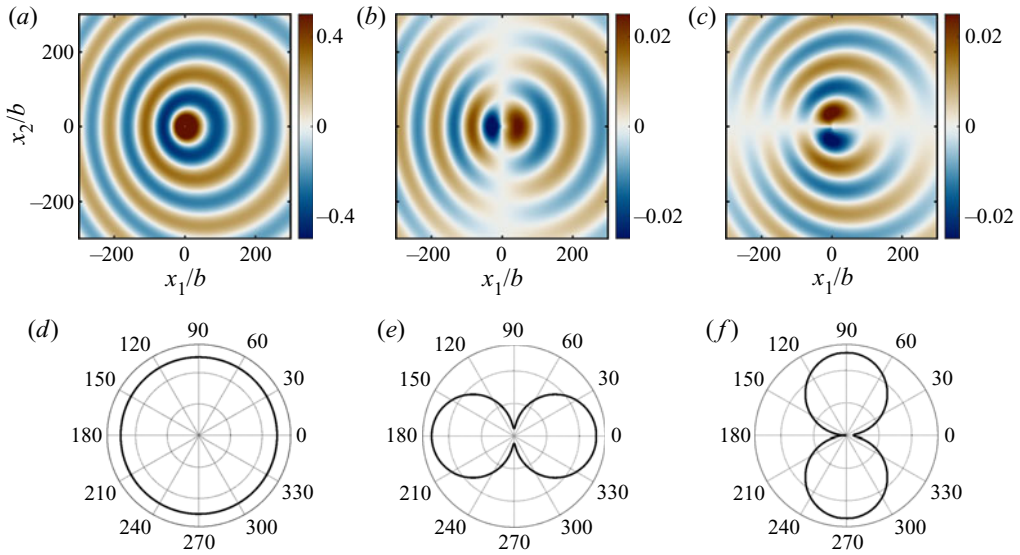


Figure 3. Components of the solution of the acoustic potential, $\hat{\phi}$, for a flow $M_\infty = 0.2$ and $He = 0.05$: (a,d) ϕ_0 ; (b,e) ϕ_1 ; and (c,f) ϕ_2 . (a–c) Real part and (d–f) directivity.

The pressure field is then obtained from these three components using (2.7). If the observer is sufficiently far from the aerofoil, the mean flow velocity and density can be assumed uniform and the pressure field simplifies to

$$p' = \rho_\infty \left[i\omega\hat{\phi} - U_\infty \frac{\partial \hat{\phi}}{\partial x_1} \right], \tag{3.18}$$

which shows that the pressure field is given as a combination of the acoustic potential and its derivative in the streamwise direction $\partial \hat{\phi} / \partial x_1$. The streamwise derivatives for the three potential components are given by

$$\frac{\partial \phi_0}{\partial x_1} = -\frac{\kappa_\infty}{\beta_\infty^2} [iM_\infty \phi_0 + \phi_1], \tag{3.19a}$$

$$\frac{\partial \phi_1}{\partial x_1} = -\frac{\kappa_\infty}{\beta_\infty^2} \left[iM_\infty \phi_1 - \frac{i}{4} \left(\frac{\tilde{x}_1^2}{|\tilde{\mathbf{x}}|^2} \mathcal{H}_2^{(1)}(\tilde{\kappa}_\infty |\tilde{\mathbf{x}}|) - \frac{1}{|\tilde{\mathbf{x}}|} \frac{\mathcal{H}_1^{(1)}(\tilde{\kappa}_\infty |\tilde{\mathbf{x}}|)}{\tilde{\kappa}_\infty} \right) \exp(-i\tilde{\kappa}_\infty M_\infty \tilde{x}_1) \right], \tag{3.19b}$$

$$\frac{\partial \phi_2}{\partial x_1} = -\frac{\kappa_\infty}{\beta_\infty^2} \left[iM_\infty \phi_2 - \frac{i}{4} \left(\frac{\tilde{x}_1 \tilde{x}_2}{|\tilde{\mathbf{x}}|^2} \mathcal{H}_2^{(1)}(\tilde{\kappa}_\infty |\tilde{\mathbf{x}}|) \right) \exp(-i\tilde{\kappa}_\infty M_\infty \tilde{x}_1) \right]. \tag{3.19c}$$

where $\mathcal{H}_2^{(1)}$ is the Hankel function of first kind and second order. These functions are depicted in figures 4 and 5 for two different Helmholtz numbers. The term iM_∞ arises from the Doppler factor and causes the sound radiated in the forward direction to be amplified whereas the sound propagating in the rear direction is attenuated. For the first component, the monopole ϕ_0 , its derivative additionally includes a dipole whose wavelength and amplitude are accordingly modulated by the Doppler effect. For the second component, the dipole along the horizontal axis ϕ_1 , its derivative additionally includes two terms: a flattened horizontal dipole and a term with a omnidirectional directivity, and

Scattering of entropy waves into sound by aerofoils

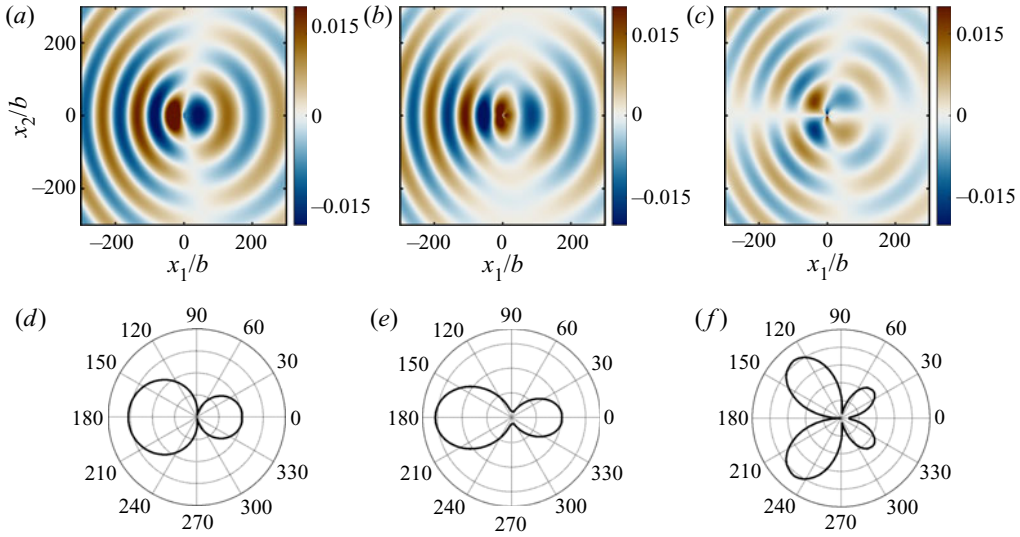


Figure 4. Streamwise derivative of the components of the acoustic potential, $\partial\hat{\phi}/\partial x_1$, for a flow $M_\infty = 0.2$ and $He = 0.05$: (a,d) $\partial\phi_0/\partial x_1$; (b,e) $\partial\phi_1/\partial x_1$; and (c,f) $\partial\phi_2/\partial x_1$. (a–c) Real part and (d–f) directivity.

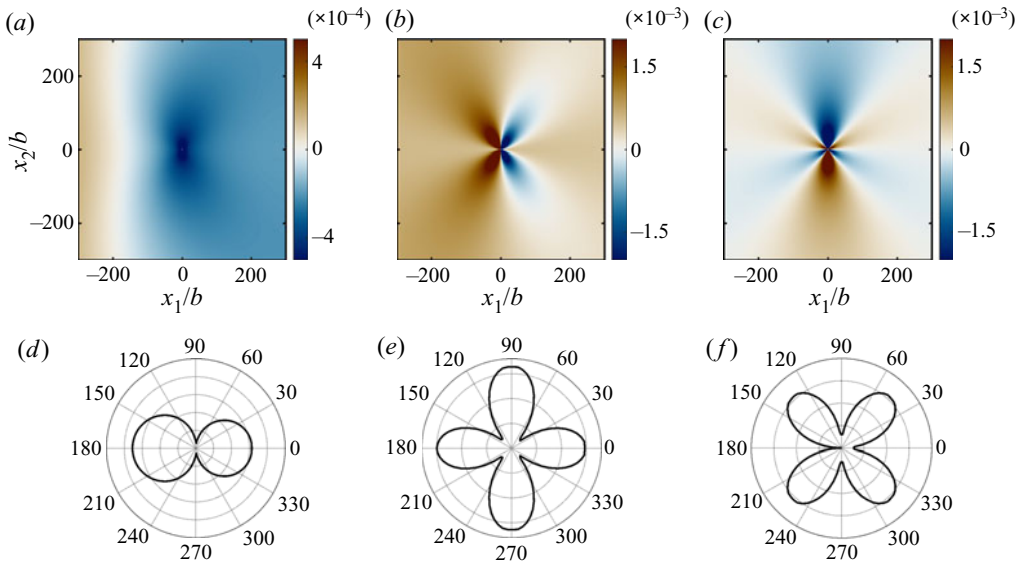


Figure 5. Streamwise derivative of the components of the acoustic potential, $\partial\hat{\phi}/\partial x_1$, for a flow $M_\infty = 0.2$ and $He = 0.001$: (a,d) $\partial\phi_0/\partial x_1$; (b,e) $\partial\phi_1/\partial x_1$; and (c,f) $\partial\phi_2/\partial x_1$. (a–c) Real part and (d–f) directivity.

that decays with distance and frequency faster than a monopole. Figure 4(b,e) and 5(b,e) show how at high frequencies the dominant contribution is the flattened dipole, while at lower frequencies both contributions are as important and combine to form a directivity pattern comprising four lobes along the two main axes. Finally, for the third component, the vertical dipole ϕ_2 , its derivative is a quadrupole also affected by the Doppler effect (stronger sound amplitude in the forward direction).

The results presented up to this point constitute a contribution of the present work. The combination of the Born approximation with (2.9) allows the integral solution given by

(3.10) to be obtained. This solution is valid within the limits summarised at the end of § 2 and those given by (3.6a–g). The solution expands the range of validity of analytical solutions beyond that available in the existing literature, because it allows aerofoils outside the scope of thin-aerofoil theory to be described. Finally, we restrict the analysis to low acoustic wavelengths ($He^2 \ll 1$) so that the computation of the Green’s functions is greatly simplified and (3.14) is obtained. This expression can be readily integrated numerically provided that the details of the mean flow are available.

4. Simplifications for thin aerofoils

To evaluate the source and boundary terms appearing in (3.14), the mean flow is required. This mean flow, given as the solution of the nonlinear compressible Euler equations, can be obtained either numerically or analytically. In the present work, we consider the latter so that explicit expressions for both the source and boundary terms are obtained. However, this requires further assumptions. Here, we restrict the aerofoil thickness, camber and angle of attack to be small, which allows one to assume that the mean flow is a small perturbation to a uniform flow (Ashley & Landahl 1985; Kerschen & Myers 1987), i.e.

$$U_0 = U_\infty(1 + \epsilon q), \tag{4.1}$$

where q is the normalised perturbation in flow speed and ϵ is a small parameter so that $\epsilon \ll 1$. Neglecting terms of second order and above, the source term simplifies to

$$\hat{S}(\Phi, \Psi) = -\epsilon A_s U_\infty \left[i(k_1 q + \beta_\infty k_2 \mu) + U_\infty M_\infty^2 \frac{\partial q}{\partial \Phi} \right] \exp(i\mathbf{k} \cdot \mathbf{X}), \tag{4.2}$$

and the boundary condition on the aerofoil becomes

$$\nabla \hat{\phi} \cdot \mathbf{n} = -\epsilon A_s U_\infty \beta_\infty \mu \exp(i\mathbf{k} \cdot \mathbf{X}), \quad \text{on } \Sigma^+, \tag{4.3a}$$

$$\nabla \hat{\phi} \cdot \mathbf{n} = \epsilon A_s U_\infty \beta_\infty \mu \exp(i\mathbf{k} \cdot \mathbf{X}), \quad \text{on } \Sigma^-, \tag{4.3b}$$

where Σ^+ and Σ^- denote the upper and lower side of the aerofoil, respectively. The function $\beta_\infty \mu$ is the mean-flow angle relative to the uniform flow at upstream infinity.

The computation of the mean-flow variables is also substantially simplified by the use of thin-aerofoil theory. The mean-flow potential Φ can be linearised as

$$\Phi = U_\infty \left[x_1 + \epsilon \Phi_1 + O(\epsilon^2) \right], \tag{4.4}$$

where the perturbation potential Φ_1 satisfies

$$\beta_\infty^2 \frac{\partial^2 \Phi_1}{\partial x_1^2} + \frac{\partial^2 \Phi_1}{\partial x_2^2} = 0 \tag{4.5}$$

and appropriate conditions on the body surface. Using the Prandtl–Glauert transformation:

$$\bar{x}_1 = x_1, \quad \bar{x}_2 = \beta_\infty x_2 \quad \text{and} \quad \bar{\Phi}_1 = \beta_\infty \Phi_1, \tag{4.6a–c}$$

this equation becomes the Laplace equation (Ashley & Landahl 1985). This transformation effectively recasts the compressible mean flow problem as an equivalent incompressible

flow in a scaled domain. The compressible perturbation velocity potential and stream function $F(z) = \Phi_1 + i\Psi_1$ are related to the incompressible complex potential $\bar{F}(z)$ by

$$F(z) = \frac{1}{\beta_\infty} \bar{F}(z), \tag{4.7}$$

where $z = \bar{x}_1 + i\bar{x}_2$ contains the coordinates of the incompressible domain. The potential and stream functions can also be written as a complex function $\zeta = \Phi + i\Psi$, which allows us to write

$$z = \frac{\zeta}{U_\infty} + O(\epsilon). \tag{4.8}$$

The perturbation velocity ($\mathcal{V} = q - i\mu$) and acceleration along a streamline are given, respectively, by

$$\mathcal{V} = \frac{dF}{dz} = \frac{1}{\beta_\infty} \frac{d\bar{F}}{dz}, \quad \frac{\partial q}{\partial \Phi} = \text{Re} \left(\frac{1}{U_\infty} \frac{d\mathcal{V}}{dz} \right). \tag{4.9a,b}$$

The drift function (2.14) simplifies to

$$g(\Phi, \Psi) = -2\epsilon \int_{-\infty}^{\Phi} q(\xi, \Psi) d\xi, \tag{4.10}$$

and using (4.9a,b) becomes

$$g(\Phi, \Psi) = -2\epsilon U_\infty \text{Re} [F(z) - F(-\infty)]. \tag{4.11}$$

To simplify the following calculations the integrals in (3.16) are split as follows:

$$\alpha_0 = -\epsilon A_s U_\infty \left[i \left(k_1 I_q^{(0)} + \beta_\infty k_2 I_\mu^{(0)} \right) + M_\infty^2 I_{\partial q}^{(0)} + \beta_\infty J_\mu^{(0)} \right], \tag{4.12}$$

$$\alpha_j = -\epsilon A_s U_\infty \frac{\kappa_\infty}{\beta_\infty} \left[i \left(k_1 I_q^{(j)} + \beta_\infty k_2 I_\mu^{(j)} \right) + M_\infty^2 I_{\partial q}^{(j)} + \beta_\infty J_\mu^{(j)} \right], \tag{4.13}$$

with

$$I_q^{(0)} = \frac{1}{\beta_\infty^2} \int_V q e^{i\sigma} d\bar{x}_1 d\bar{x}_2, \quad I_q^{(j)} = \frac{1}{\beta_\infty^2} \int_V q Y_j e^{i\sigma} d\bar{x}_1 d\bar{x}_2, \tag{4.14a}$$

$$I_\mu^{(0)} = \frac{1}{\beta_\infty^2} \int_V \mu e^{i\sigma} d\bar{x}_1 d\bar{x}_2, \quad I_\mu^{(j)} = \frac{1}{\beta_\infty^2} \int_V \mu Y_j e^{i\sigma} d\bar{x}_1 d\bar{x}_2, \tag{4.14b}$$

$$I_{\partial q}^{(0)} = \frac{U_\infty}{\beta_\infty^2} \int_V \frac{\partial q}{\partial \Phi} e^{i\sigma} d\bar{x}_1 d\bar{x}_2, \quad I_{\partial q}^{(j)} = \frac{U_\infty}{\beta_\infty^2} \int_V \frac{\partial q}{\partial \Phi} Y_j e^{i\sigma} d\bar{x}_1 d\bar{x}_2, \tag{4.14c}$$

$$J_\mu^{(0)} = \int_{\Sigma^\pm} \mp \mu e^{i\sigma} dS, \quad J_\mu^{(j)} = \int_{\Sigma^\pm} \mp \mu Y_j e^{i\sigma} dS, \tag{4.14d}$$

and $j = 1, 2$. The volume integrals have been transformed to the equivalent incompressible domain, with the factor $1/\beta_\infty^2$ being the Jacobian of the change of variables. The term $\sigma = \mathbf{k} \cdot \mathbf{X} + \tilde{\kappa}_\infty M_\infty \tilde{x}_1$ in the exponentials can be simplified as

$$\sigma = \frac{St}{\beta_\infty^2} \frac{\bar{x}_1}{b} + \frac{k_2 b}{\beta_\infty} \frac{\bar{x}_2}{b} + O(\epsilon), \tag{4.15}$$

where $St = \omega b / U_\infty$ is the Strouhal number based on the semi-chord of the aerofoil.

The thin-aerofoil approximation also leads to the first-order correction of the Born approximation (3.5) being negligible. The zero-order term is $\hat{\phi}_\infty = O(\epsilon)$ because the source term and boundary condition are of that order. Additionally, the operator \mathcal{L}_Δ becomes $O(\epsilon)$. The source term is $\mathcal{L}_\Delta(\hat{\phi}_\infty) = O(\epsilon^2)$, hence the potential is $\hat{\phi}_\Delta = O(\epsilon^2)$ and can be neglected.

Finally, the thin-aerofoil limit also allows the third integral in (3.10) to be neglected. This integral appears because the source term given by (2.16) is singular along the streamline going through the aerofoil (which contains the aerofoil and the wake) which means that the acoustic potential can become discontinuous across it. This integral is used to enforce continuity of pressure across the wake. Because the singularity is moved to higher-order terms, the continuity of both the potential and pressure field is guaranteed up to this order.

5. Sound generated by thin symmetric aerofoils

In this section, we particularise the theory previously outlined to a thin, symmetric aerofoil. Specifically, we consider a canonical Joukowski profile whose mean flow can be obtained analytically using conformal mapping. Such an aerofoil is parametrised by

$$x_1 = \text{Re} \left\{ \left(e^{i\theta} + \tau_0 \right) + \frac{a^2}{e^{i\theta} + \tau_0} \right\}, \quad x_2 = \frac{1}{\beta_\infty} \text{Im} \left\{ \left(e^{i\theta} + \tau_0 \right) + \frac{a^2}{e^{i\theta} + \tau_0} \right\}, \quad (5.1a,b)$$

with $\theta \in [0, 2\pi)$, $\tau_0 = -\epsilon/(1 + \epsilon)$ and $a = 1/(\epsilon + 1)$. Here, the expansion parameter ϵ corresponds to approximately half the maximum thickness of the aerofoil (normalised by its semi-chord). All the results are obtained for a case defined by $\epsilon = 0.05$.

5.1. Numerical results

We first compute a numerical solution of the two-dimensional compressible Euler equations as a benchmark for the model. Both the steady and linearised Euler equations are solved using the finite element method (Donea & Huerta 2003) implemented using the open-source computing platform FEniCS (Logg *et al.* 2012; Alnæs *et al.* 2015).

The mean flow is obtained as the solution of the steady compressible Euler equations in conservation variables. The equations are discretised in space using a continuous Galerkin formulation stabilised using the least-squares method (Donea & Huerta 2003). The discretised nonlinear problem is solved using a fully-implicit, pseudo-time-stepping algorithm (Crivellini, D'Alessandro & Bassi 2013). The algorithm adapts the local time step every iteration so that it is inversely proportional to the local residuals. When the residuals are small, the time step becomes large, the unsteady term negligible and the algorithm effectively behaves as the Newton method, exhibiting quadratic convergence. The global residuals (in norm-2) for all the results presented hereafter are lower than 10^{-9} . The results are typically obtained in less than 100 iterations. At the aerofoil boundary we require the fluid to satisfy the slip boundary condition. At the inlet we impose uniform velocity and density, and at the outlet we impose uniform pressure. The meshes used in this study are fully unstructured and contain approximately 200 000 triangular elements. The approximation polynomials are quadratic. The domain is a square with the length of a side being $26b$.

Figure 6 depicts the mean flow obtained numerically. At the leading edge of the aerofoil, the flow quickly decelerates from the upstream velocity to being stagnant. It then accelerates until the point of maximum thickness of the aerofoil and gently decelerates thereafter until the trailing edge. Note that for Joukowski aerofoils, a second stagnation

Scattering of entropy waves into sound by aerofoils

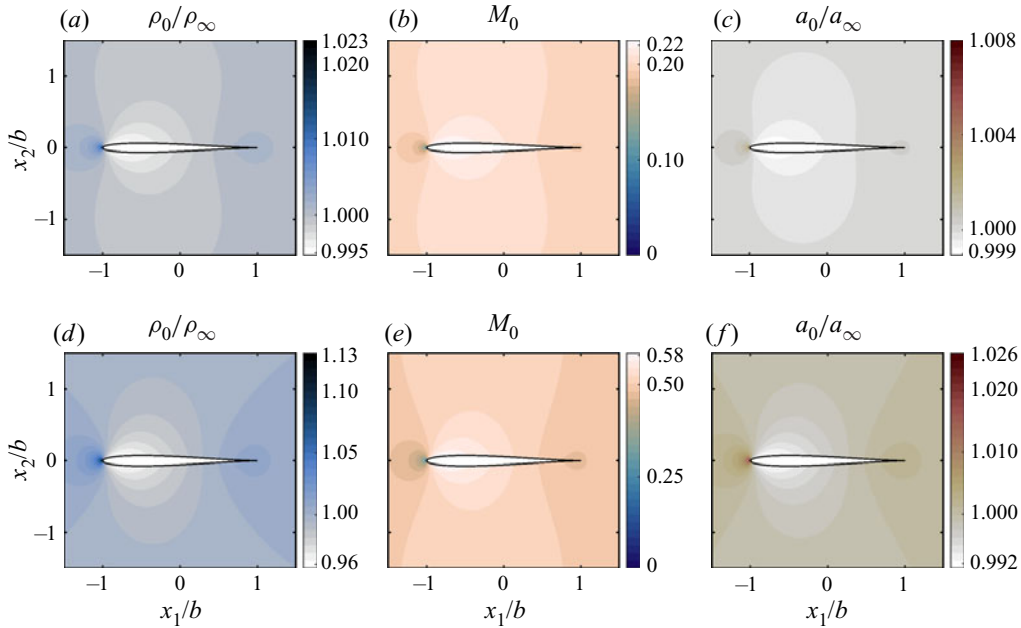


Figure 6. Normalised density ρ_0/ρ_∞ , local Mach number $M_0 = U_0/a_0$ and normalised speed of sound a_0/a_∞ for a symmetric aerofoil at (a–c) $M_\infty = 0.2$ and (d–f) $M_\infty = 0.5$.

point does not exist there (in contrast with realistic aerofoils). At the point of largest velocity, its increase never exceeds 20% of the unperturbed velocity. Therefore, the main acceleration occurs in the region around the stagnation point at the leading edge. This velocity variation translates to the density and speed of sound. The speed of sound does not exceed 2% of the unperturbed one in any case. The variation of density is larger, reaching variations of 4% at the leading edge for $M_\infty = 0.5$, but remains low enough to neglect them in the analytical model.

We now turn our attention to the acoustic problem. The linearised compressible Euler equations are formulated in primitive variables and recast in the frequency domain. Then, they are spatially discretised using the discontinuous Galerkin method (Bassi & Rebay 1997; Cockburn & Shu 2001). The discretisation leads to a linear problem that is solved using the sparse linear solver MUMPS (Amestoy *et al.* 2001, 2006). A perfectly matched layer (PML) (Hu 2001) was added to the domain to damp any incoming acoustic wave. To enforce the incoming entropy waves, an incident density fluctuation was superimposed to the reflected solution in the PML (Özyörük 2009). A slip boundary condition is used on the aerofoil.

The current implementation of the finite element method allows for approximation polynomials whose order range $p = 0$ – 5 . The bulk of the simulations are carried out using quadratic elements $p = 2$. However, to assess the accuracy of the results, simulations with cubic elements were performed for the highest frequencies showing the independence of the results to the order of the polynomials. Additionally, a mesh convergence study was performed showing that 20 points per entropy wavelength are sufficient to obtain mesh-independent results. The final mesh used for the study is unstructured and is composed approximately of 150 000 triangular elements. The domain is again a square. The length of the domain is varied from $20b$ to $40b$. All the domains are extended by a PML of length $5b$. The PML coefficients are $\sigma_m = 6$ and $\beta = 2$ (as defined by Hu 2001).

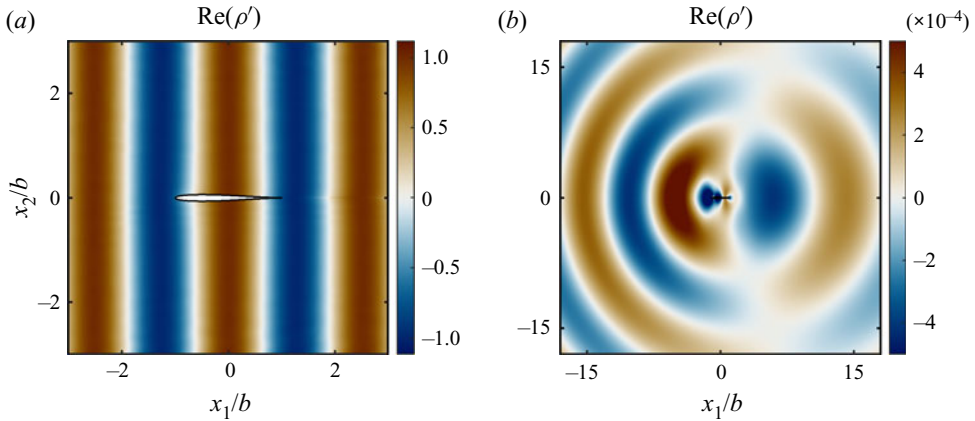


Figure 7. Numerical results: real parts of the (a) perturbation density, ρ'/ρ_∞ , and (b) pressure, $p'/\gamma p_\infty$, for a symmetric aerofoil at $M_\infty = 0.2$ and $He = 0.5$.

For the highest frequencies considered here, the simulations are independent of the size of the domain. However, for the lowest frequency (corresponding to $He = 0.001$), small variations are observed for different domains. This indicates that the simulation for this frequency is not fully converged in domain size (larger domains are beyond our current computational capabilities). The variations of the acoustic directivity with different sizes are small enough to assure that the results will not change dramatically for larger domains. Note that the effect of the PML layer was ruled out by running several simulations with different sets of PML parameters for every domain size. Figure 7 shows an example of the acoustic field obtained from the simulations, which shows that for a plane entropy wave the generated acoustic field resembles a dipole radiating along the horizontal axis.

5.2. Source term and Kirchhoff vectors

The incompressible mean-flow potential is obtained by mapping a cylinder of unit radius centred at the origin (τ -plane) into the aerofoil defined by (5.1a,b) (z -plane) as follows:

$$z = \left(\tau + \tau_0 + \frac{a^2}{\tau + \tau_0} \right). \tag{5.2}$$

The incompressible potential in the τ -plane is given by

$$f(\tau) = U_\infty \left(\tau + \frac{1}{\tau} \right) + U_\infty \tau_0. \tag{5.3}$$

The incompressible perturbation potential ($\epsilon \bar{F} = f/U_\infty - z$) is obtained as

$$\epsilon \bar{F} = \left[\frac{1}{\tau} - \frac{a^2}{(\tau + \tau_0)} \right] \simeq \epsilon \left[\frac{2}{\tau} - \frac{1}{\tau^2} \right]. \tag{5.4}$$

The perturbation velocity is

$$\epsilon \mathcal{V} = \epsilon \frac{dF}{dz} = \frac{\epsilon}{\beta_\infty} \left(\frac{d\bar{F}}{d\tau} / \frac{dz}{d\tau} \right) \simeq -\frac{2\epsilon}{\beta_\infty} \frac{1}{\tau(\tau + 1)}. \tag{5.5}$$

Scattering of entropy waves into sound by aerofoils

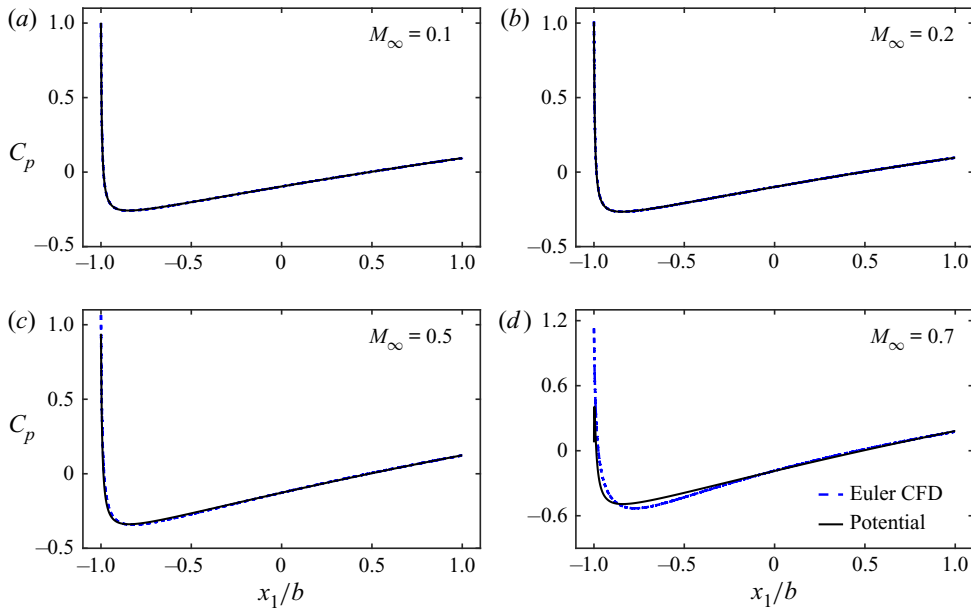


Figure 8. Mean-flow surface pressure coefficient for different Mach numbers obtained numerically (blue dashed) and using potential theory (black solid).

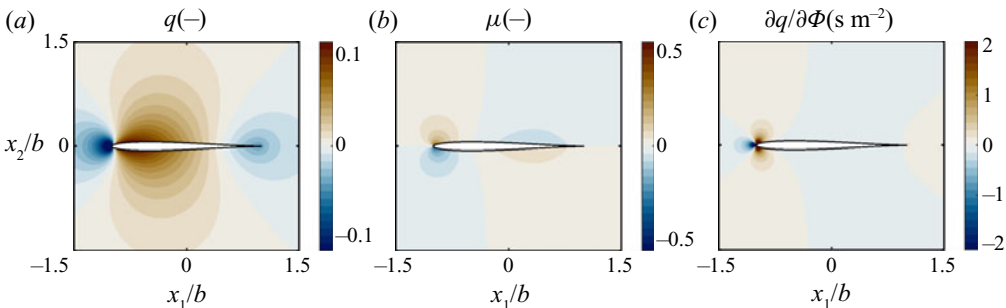


Figure 9. Components of the source term (4.2).

Figure 8 compares the normalised mean-flow pressure coefficient obtained using the numerical simulations with the predictions of linearised theory. Note that the compressible variables are obtained from the incompressible ones through the Prandtl–Glauert transformation (see §§ 2.1 and 4). At low Mach numbers, the analytical results closely match the simulations over the entire blade. For $M_\infty = 0.5$, the agreement is still good for most of the aerofoil, but some discrepancies appear close to the leading edge. This is because thin-aerofoil theory breaks down at that point. For $M_\infty = 0.7$, some mismatch between simulations and theory are noticeable over the whole surface and are more pronounced at the leading edge. Overall, the results suggest that potential theory is a good approximation for this problem.

The velocity and acceleration components involved in the calculation of the source term of (4.2) are shown in figure 9. It is apparent that the region that contributes most to the noise generation is the area around the leading edge. Both the perturbation velocity q and its acceleration $\partial q / \partial \Phi$ exhibit reflectional symmetry with respect to the horizontal

axis ($x_2 = 0$) whereas the perturbation to the mean-flow angle μ is antisymmetric. These considerations have important implications when integrating the source term.

The last necessary elements for the model are the Kirchhoff vectors $Y_j = y_j - \varphi^*(y_j)$. To obtain an analytical expression for them, we restrict the analysis to flows satisfying $\tilde{\kappa}_\infty M_\infty \ll 1$, so that the second term in (3.13) disappears. The problem then simplifies to solving a Laplace equation with slip boundary conditions on the aerofoil and conformal mapping can be used again to obtain

$$Y_1/b \simeq \frac{1}{2\beta_\infty} \operatorname{Re} \left\{ \left(\tau + \frac{1}{\tau} \right) + \epsilon \left(\tau + \frac{1}{\tau} - 1 \right) \right\}, \tag{5.6a}$$

$$Y_2/b \simeq \frac{1}{2\beta_\infty} \operatorname{Re} \left\{ \left(-i\tau + \frac{i}{\tau} \right) + \epsilon \left(-i\tau + \frac{i}{\tau} \right) \right\}. \tag{5.6b}$$

Note that when the term $\epsilon = 0$, the expressions correspond to the Kirchhoff vectors for a flat plate. When we multiply the source term ($O(\epsilon)$) by the Kirchhoff vectors, the second terms in both the Kirchhoff vectors become $O(\epsilon^2)$ and can be neglected. This means that, in the limit $\epsilon \ll 1$, the aerofoil can be approximated as a flat plate. In other words, the effect that the solid boundaries of the blade have in the acoustic response is equivalent to that of a flat plate.

Figure 10 shows the Kirchhoff vectors Y_1 and Y_2 that are symmetric and antisymmetric with respect to the horizontal axis, respectively. This has consequences when evaluating the acoustic integrals: any source term with horizontal symmetry will contribute to the integrals in α_0 and α_1 that weight a monopole and a horizontal dipole, respectively. Using symmetry considerations, the integrals in α_2 vanish and, thus, a symmetric source does not contribute to the vertical dipole solution. For an antisymmetric source, the conclusion is the inverse: the terms α_0 and α_1 are cancelled and the source only contributes to the potential as a dipole along the vertical axis.

Figure 10 also depicts the functions $\varphi_j^*(y_j)$ that represent the influence of the solid boundary on the acoustic potential. The physical meaning of these functions can be intuitively understood if a point source is considered. This source can be placed, for instance, on the horizontal axis close to the leading edge. The resulting acoustic potential is the sum of a monopole, as in free-space, together with a horizontal dipole owing to the shielding of the aerofoil. This is apparent from φ_j^* : φ_1^* is relatively large at that point whereas φ_2^* is close to zero. If the point source is now placed on the upper side of the aerofoil, close to the point of maximum thickness, the acoustic potential is given by the combination of a monopole and a vertical dipole (which arises again from the shielding of the blade). This is captured by φ_2^* being large at that point and φ_1^* being negligible.

5.3. Acoustic response

We now compute the integrals in (4.14) to obtain a closed form of the perturbation pressure p' . To evaluate the integrals, these are transformed to the cylindrical domain (τ -plane) and then expressed in cylindrical coordinates. An example is given below:

$$\begin{aligned} I_q^{(0)} &= \frac{1}{\beta_\infty^3} \int_V \operatorname{Re} \left\{ \frac{d\bar{F}}{dz} \right\} \frac{dz}{d\tau} \frac{\overline{dz}}{d\tau} e^{i\sigma} d\tau_1 d\tau_2 \\ &= \frac{1}{\beta_\infty^3} \int_1^\infty \int_0^{2\pi} \left[r \operatorname{Re} \left\{ \frac{d\bar{F}}{d\tau} \frac{\overline{dz}}{d\tau} \right\} e^{i\sigma} \right] d\theta dr. \end{aligned} \tag{5.7}$$

Scattering of entropy waves into sound by aerofoils

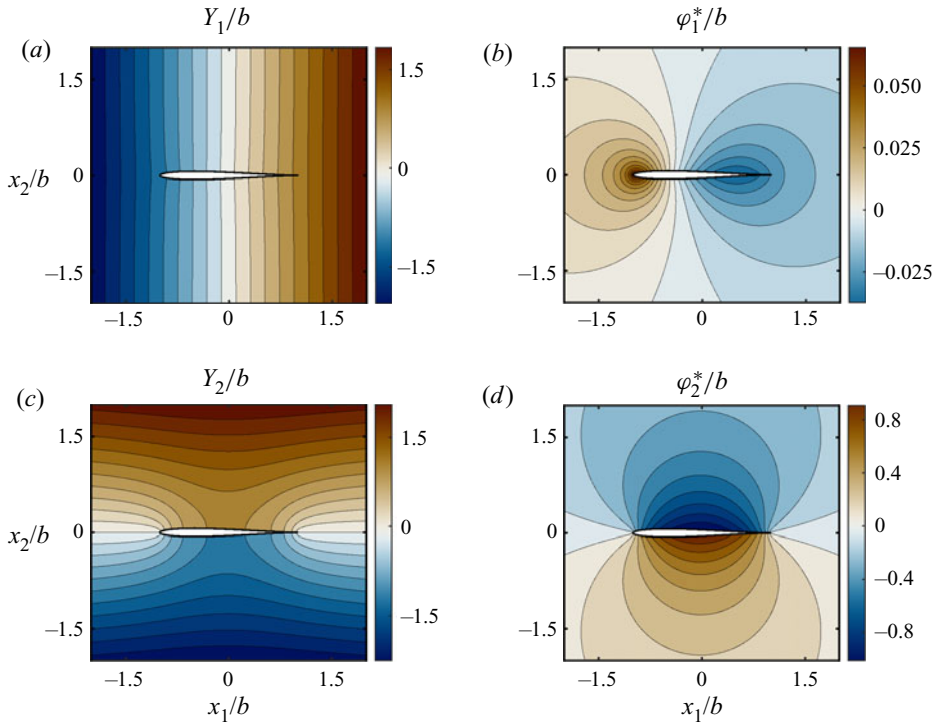


Figure 10. Kirchhoff vectors $Y_j = y_j - \varphi_j^*(y)$. The functions φ_j^* capture the influence of the aerofoil on the acoustic field.

Note that the term $(dz/d\tau)\overline{(d\bar{z}/d\bar{\tau})}$ corresponds to the Jacobian of the transformation from the z -plane to the τ -plane. The source terms and Kirchhoff vectors in the integrand are expressed as a sum of rational terms. However, to the best of the authors' knowledge, the integrals preclude an analytical solution owing to the exponential term $e^{i\sigma}$ and must be obtained numerically. To approximate the integrals, we truncate the infinite limit in the radius to a finite number. The convergence with respect to this value is assessed in [Appendix C](#).

The numerical values obtained for the integrals are depicted in [figure 11](#). The β_∞ -factor is removed from the integrals as

$$\left. \begin{aligned} I_q^{(0)} &= I_q^{(0)*} \left(b^2 / \beta_\infty^3 \right), & I_{\partial q}^{(0)} &= I_{\partial q}^{(0)*} \left(b / \beta_\infty^3 \right), & J_\mu^{(0)} &= J_\mu^{(0)*} \left(b / \beta_\infty^2 \right), \\ I_q^{(1)} &= I_q^{(1)*} \left(b^3 / \beta_\infty^4 \right), & I_{\partial q}^{(1)} &= I_{\partial q}^{(1)*} \left(b^2 / \beta_\infty^4 \right), & J_\mu^{(1)} &= J_\mu^{(1)*} \left(b^2 / \beta_\infty^3 \right), \end{aligned} \right\} \quad (5.8)$$

so that they can be expressed only as functions of $St^* = St / \beta_\infty^2$. For $St^* < 0.5$, clear trends arise from the results, which can be summarised as follows:

$$\left. \begin{aligned} I_q^{(0)*} &\simeq \pi - i\frac{\pi}{4}St^*, & I_q^{(1)*} &\simeq -\frac{\pi}{4} + i\frac{\pi}{4}St^*, & I_q^{(2)} &\simeq 0, \\ I_{\partial q}^{(0)*} &\simeq -\frac{\pi}{4}St^{*2} - i\pi St^*, & I_{\partial q}^{(1)*} &\simeq -\pi + i\frac{\pi}{2}St^*, & I_{\partial q}^{(2)} &\simeq 0, \\ J_\mu^{(0)*} &\simeq -\frac{\pi}{4}St^{*2} - i\pi St^*, & J_\mu^{(1)*} &\simeq -\pi + i\frac{\pi}{2}St^*, & J_\mu^{(2)} &\simeq 0. \end{aligned} \right\} \quad (5.9)$$

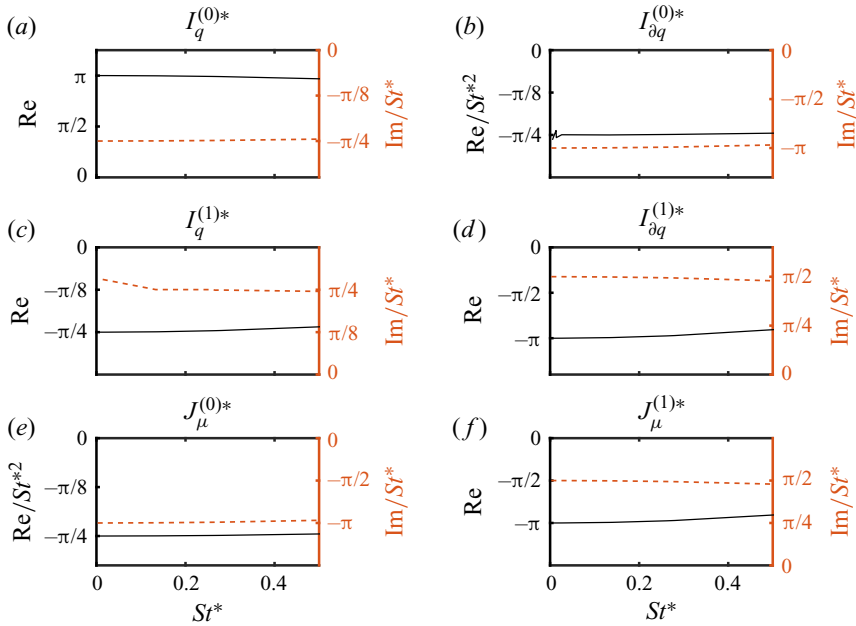


Figure 11. Real (black solid) and imaginary (red dashed) parts of the source and boundary integrals. The results are scaled by functions of $St^* = St/\beta_\infty^2$ to highlight their functional dependence on this parameter.

For simplicity, we consider only plane entropy waves ($k_2 = 0$) and, thus, the computation of the integrals $I_\mu^{(0)}$ and $I_\mu^{(j)}$ is not necessary. A simple analytical description of the acoustic potential can be given as

$$\frac{\hat{\phi}}{(U_\infty b)} \simeq \frac{\epsilon A_s \pi He}{\beta_\infty^5} \left[M_\infty \left(\frac{St}{4\beta_\infty^2} + i \right) \phi_0(x) + \left(1 + \frac{St^2}{4\beta_\infty^2} - iSt \left(\frac{1 + M_\infty^2}{4\beta_\infty^2} \right) \right) \phi_1(x) \right], \tag{5.10}$$

which shows that the acoustic potential is the combination of a monopole and a horizontal dipole solution. The monopole, which arises from the acceleration source term, is $O(M_\infty)$ the dipole. The main contribution for the dipole term comes from the boundary integral. Physically, the dipole can be interpreted in terms of the unsteady horizontal force experienced by the blade when interacting with density fluctuations. To counter this force, an acoustic field must be generated. The monopole term, on the other hand, has its origin in the strong local acceleration produced at the leading edge of the aerofoil. Note that for $St^* > 0.5$, the values of the integrals quickly deviate from the trends shown in figure 11 and (5.10) is no longer appropriate. For these frequencies, however, the general formalism is still fully valid and results are obtained for each individual frequency.

Figure 12 shows an example of the acoustic field predicted by the model. For $M_\infty = 0.1$, the acoustic field has the form of a horizontal dipole, with amplitude weakly modulated by the Doppler factor. When the Mach number is increased to $M_\infty = 0.5$, the main sound radiation still happens along the horizontal axis, but the field exhibits a strong directivity in the forward direction. This arises from a combination of the Doppler factor and the monopole contribution becoming significant.

The quality of the model is now assessed using the numerical results described in § 5.1. Figures 13, 14, 17 and 18 show a comparison of the predictions of the model with

Scattering of entropy waves into sound by aerofoils

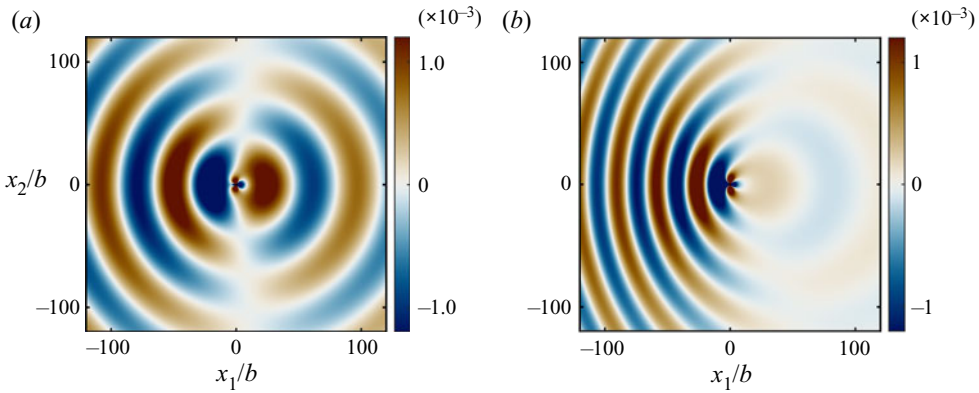


Figure 12. Normalised acoustic field, $p'/\rho_\infty U_\infty^2$, predicted by the model for a symmetric aerofoil at $He = 0.1$ and (a) $M_\infty = 0.1$ and (b) $M_\infty = 0.5$. See supplementary movies 1 and 2 available at <https://doi.org/10.1017/jfm.2021.569>.

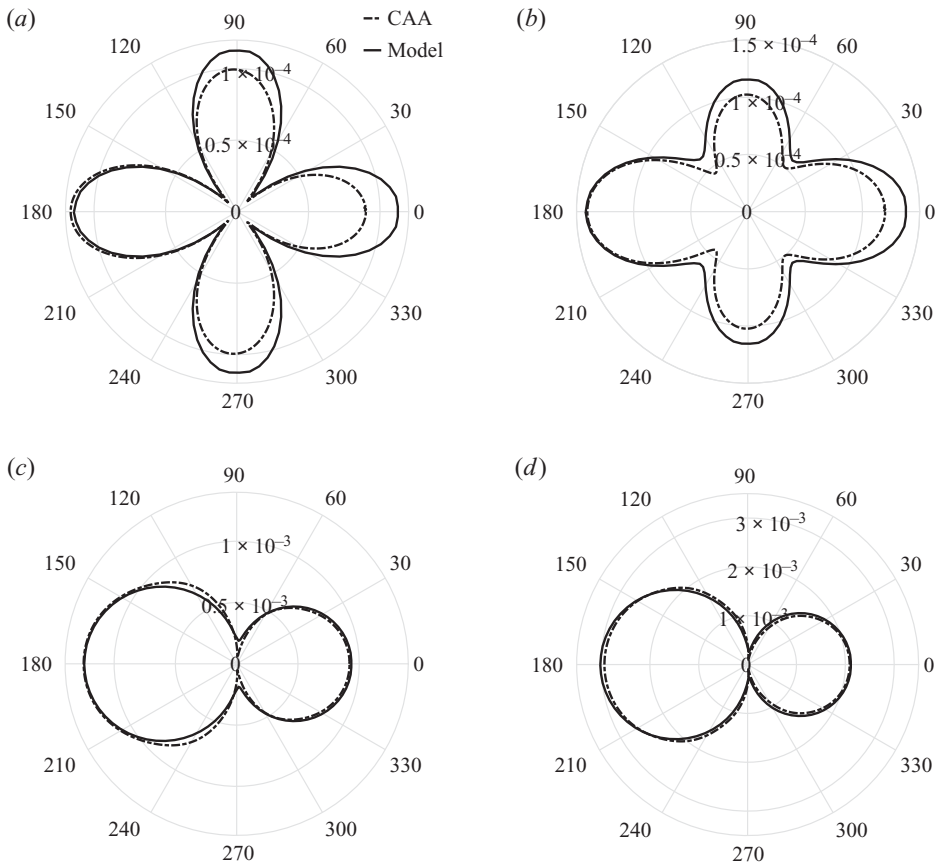


Figure 13. Model validation: far-field directivity pattern, $|p'|/\rho_\infty U_\infty^2$, of the analytical solution compared with numerical solutions of the Euler equations. Here, $M_\infty = 0.1$ and Helmholtz numbers (a) $He = 0.001$, (b) $He = 0.005$, (c) $He = 0.05$ and (d) $He = 0.1$. The observer is placed at $R_{obs}/b = 15$. Note that the axis amplitudes are different for each frequency.

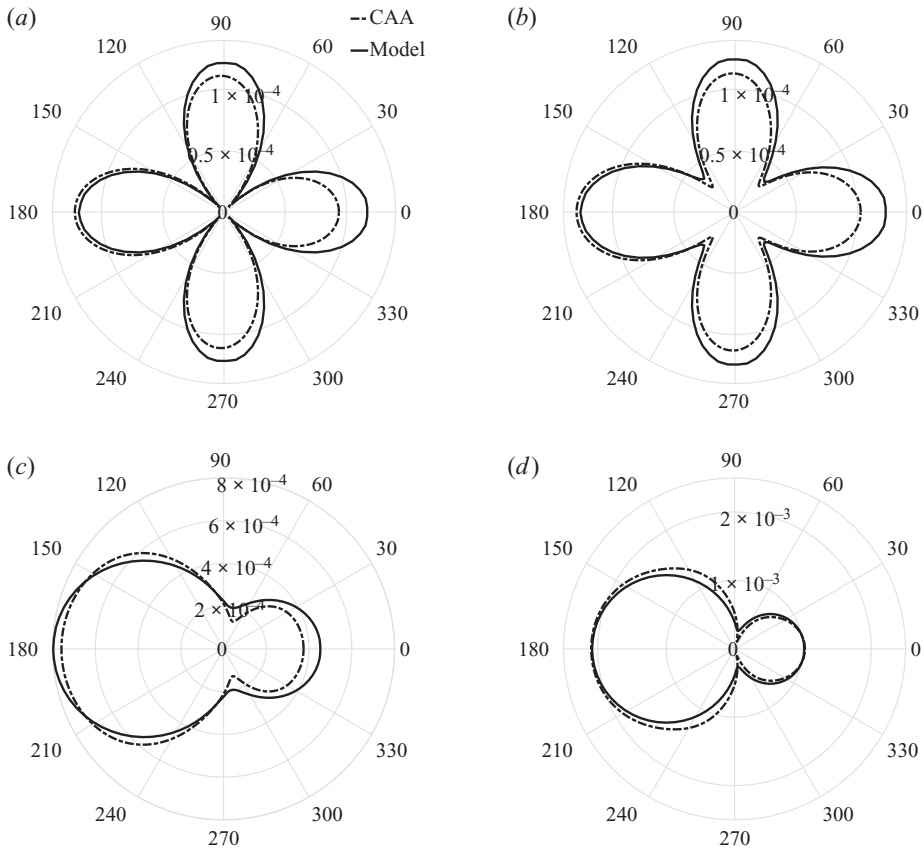


Figure 14. Far-field directivity pattern, $|p'|/\rho_\infty U_\infty^2$, for $M_\infty = 0.2$ and Helmholtz numbers (a) $He = 0.001$, (b) $He = 0.005$, (c) $He = 0.05$ and (d) $He = 0.1$. The observer is placed at $R_{obs}/b = 15$.

numerical simulations of the linearised compressible Euler equations for several Mach numbers and frequencies. The modulus of the pressure field $|p'|$ has been computed at a distance of 15 semi-chords from the profile for four different Helmholtz numbers. At low Mach numbers, figures 13 and 14 show that the agreement between computational aeroacoustics (CAA) and model predictions is excellent for all four frequencies. At low frequencies, the directivity exhibits four main lobes along the horizontal and vertical axes. This behaviour corresponds to that observed for the axial derivative of the horizontal dipole $\partial\phi_1/\partial x_1$ at low frequencies (figure 5(b,e) – second term of (3.19b)). Further from the source, the directivity pattern is similar to a dipole. At higher frequencies, the directivity clearly exhibits the behaviour of a horizontal dipole with a stronger directivity in the forward direction (accentuated with increased Mach number).

In figure 15, we explore the evolution of the acoustic pressure as a function of the frequency for a fixed observer. At low frequencies ($St < 0.5$), (5.10) shows that the acoustic potential increases linearly with the frequency. Combining this with (3.18), we obtain the quadratic growth of the acoustic pressure observed in figure 15. For $St > 0.5$, the pressure keeps increasing for increasing frequencies with a seemingly linear dependence. At $St \simeq 1.5$ this linear growth saturates and a maximum value of the pressure is obtained at around $St \simeq 2.5$. The pressure then drops reaching a local minimum at $St \simeq 4.25$. All these trends are qualitatively well-described by the model. Quantitatively, the predictions

Scattering of entropy waves into sound by aerofoils

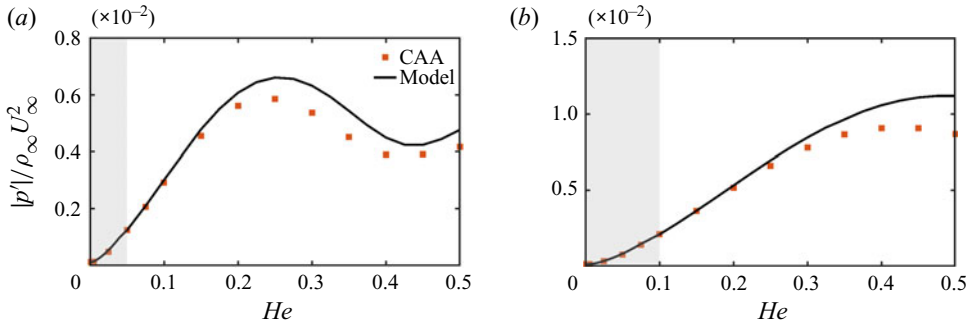


Figure 15. Limits of validity of the model: normalised acoustic pressure, $|p'|/\rho_\infty U_\infty^2$, for an observer placed at $(x_1, x_2) = (-15b, 0)$. The grey area corresponds to the domain of validity of (5.10). (a) $M_\infty = 0.1$ and (b) $M_\infty = 0.2$.

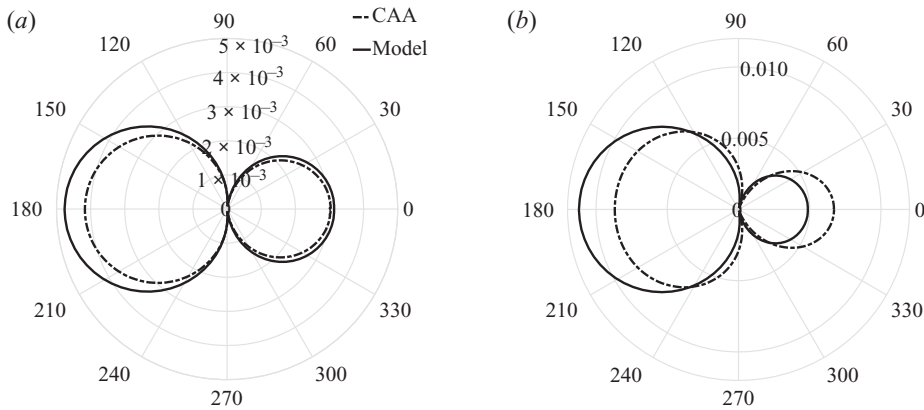


Figure 16. Limits of validity of the model: far-field directivity pattern, $|p'|/\rho_\infty U_\infty^2$, for $He = 0.5$, and (a) $M_\infty = 0.1$ and (b) $M_\infty = 0.2$.

of the model are in excellent agreement with the numerical results up to $He \approx 0.2$, after which the performance of the model slowly deteriorates. This is in agreement with the range of validity of the compact Green's function (valid for $He^2 \ll 1$). Figure 16 shows the directivity for a frequency which is beyond the range of validity of the analytical solution, namely $He = 0.5$. Although a certain mismatch is observed, the directivity pattern is generally well-described (especially for $M_\infty = 0.1$).

Figures 17 and 18 show directivity plots for $M_\infty = 0.5$ and 0.7 , respectively. At low frequencies, the four-lobes directivity pattern persists. At higher frequencies, the pressure presents a very strong directivity in the forward direction owing to a combination of the Doppler effect and the monopole source created at the leading edge. These figures also show that the performance of the model slowly degrades with increasing Mach number. For $M_\infty = 0.5$, the predictions for both directivity and amplitude are acceptable, even if not as good as for the previous cases. For $M_\infty = 0.7$, the directivity is still correctly predicted, but the model underestimates the pressure amplitude by a factor of approximately two. The disagreement most probably arises from errors in the mean flow model. As explained in § 5.2, we observe a mismatch between the numerical and the theoretical normalised pressure coefficient for $M_\infty = 0.7$, which becomes quite significant close to the stagnation point of the aerofoil, where the main source of noise resides.

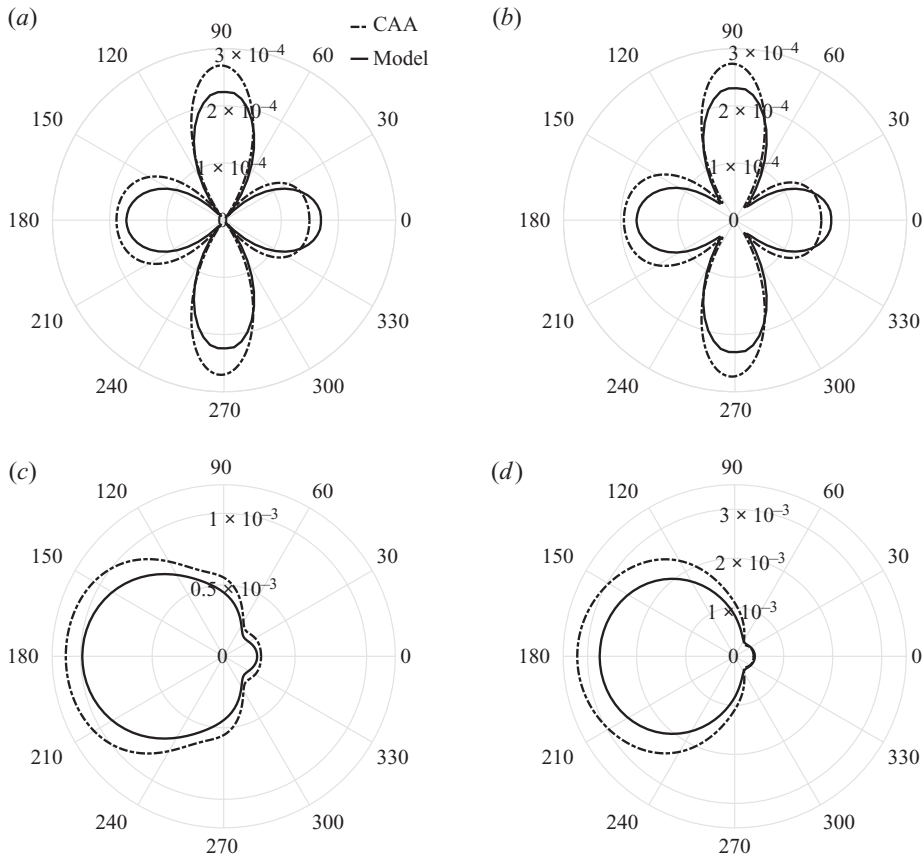


Figure 17. Far-field directivity pattern, $|p'|/\rho_\infty U_\infty^2$, for $M_\infty = 0.5$ and Helmholtz numbers (a) $He = 0.001$, (b) $He = 0.005$, (c) $He = 0.05$ and (d) $He = 0.1$. The observer is placed at $R_{obs}/b = 15$.

6. Summary and conclusions

A theoretical model for the sound generated by entropy perturbations interacting with blades has been introduced. The model is based on a linearisation of the compressible Euler equations about a steady, potential mean flow. Using the Born approximation, it has been shown that for thin aerofoils, the sound can be assumed to propagate in a uniform mean flow. This assumption is also valid for thick and strongly cambered aerofoils at the expense of the range of validity in frequency and Mach number. Using a Lorentz-type transformation, the governing equations have been reduced to the Helmholtz equation that has been solved using a low-frequency Green's function. The approach assumes that the acoustic wavelength is large compared to the chord of the profile, but it places no restriction on the entropy wavelength. The source term has been simplified using thin-aerofoil theory and results have been obtained for a symmetric aerofoil, showing good agreement between the model and numerical simulations of the linearised compressible Euler equations. The results show that the acoustic field generated when this aerofoil interacts with plane entropy waves corresponds to a dipole along the horizontal axis, in agreement with the conclusions of Bodony (2009), and an additional monopole term that becomes apparent only at high Mach numbers.

Scattering of entropy waves into sound by aerofoils

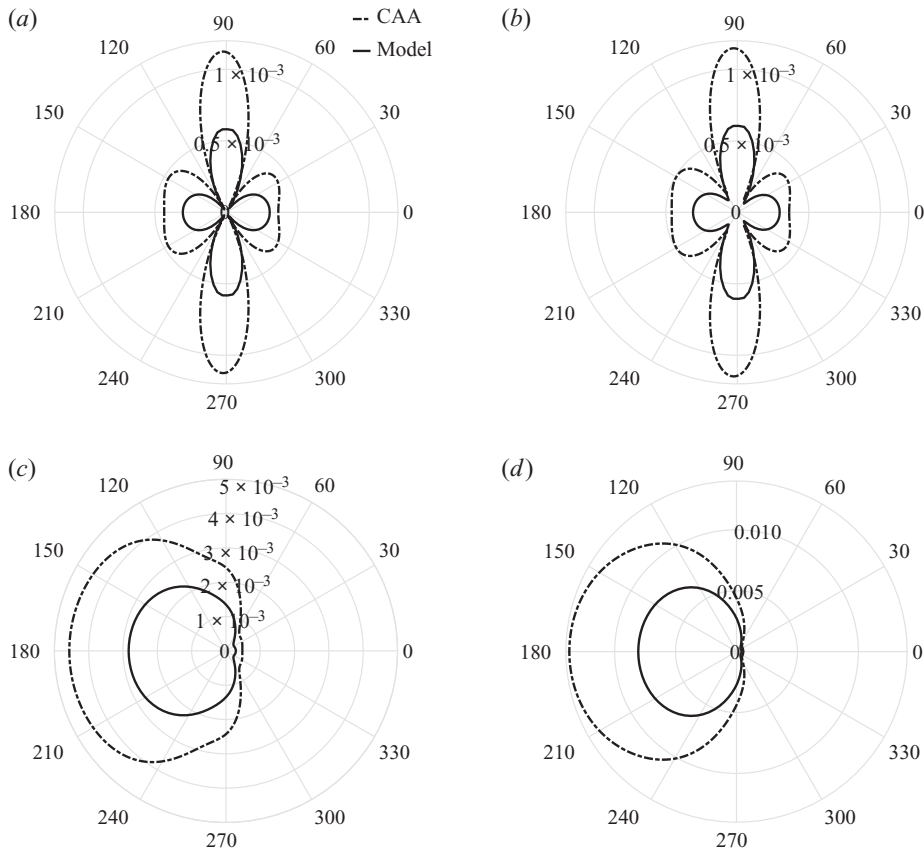


Figure 18. Far-field directivity pattern, $|p'|/\rho_\infty U_\infty^2$, for $M_\infty = 0.7$ and Helmholtz numbers (a) $He = 0.001$, (b) $He = 0.005$, (c) $He = 0.05$ and (d) $He = 0.1$. The observer is placed at $R_{obs}/b = 15$.

This work represents an extension to low frequencies of existing solutions using high-frequency asymptotics (Kerschen & Myers 1987; Tsai 1992; Myers & Kerschen 1995, 1997). Solutions in the thin-aerofoil limit are now available for all range of frequencies for symmetric aerofoils. An extension of the current theory to lifting aerofoils is currently under investigation and will be the subject of future publications.

An advantage of the approach proposed here is that it can be extended to aerofoils beyond the limits of thin-aerofoil theory. This is of practical interest for the modelling of blades in realistic turbine cascades, where the favourable pressure gradient allows for larger angles of attack, cambers and thickness of the aerofoils. This extension presents some difficulties, the most important being that the source term and boundary conditions become singular along the aerofoil and wake. This problem was addressed by Atassi & Grzedzinski (1989) who proposed an alternative splitting of the velocity field more suitable for numerical applications (Scott & Atassi 1995; Scott, Atassi & Susan-Resiga 2003). An extension of the model proposed here is actively being developed using Atassi's formulation together with a boundary element method (Zhong *et al.* 2019).

Entropy noise is relevant in the context of turbomachinery for which the current approach requires an extension to cascades with finite blockage ratio. This challenge will be addressed in a forthcoming study and involves the separation of the domain into

upstream, downstream and interblade regions and the use of periodic Green’s functions (Linton 1998).

Supplementary material. Supplementary movies are available at <https://doi.org/10.1017/jfm.2021.569>.

Acknowledgements. A preliminary version of this work was presented at *AIAA Aviation* as Guzmán-Iñigo, Duran & Morgans (2018). J.G. gratefully acknowledges Dong Yang for valuable advice.

Funding. The authors would like to gratefully acknowledge the European Research Council (ERC) Starting Grant ACOULOMODE (2013–2018) and the ERC Consolidator Grant AFIRMATIVE (2018–2023) for supporting the current research.

Declaration of interests. The authors report no conflict of interest.

Author ORCIDs.

 Juan Guzmán-Iñigo <https://orcid.org/0000-0002-1833-6034>.

Appendix A. Validity of the Born approximation

In this Appendix, we study the conditions of validity of the Born approximation for the ‘time-reduced’ convected wave equation (3.2). To this end, we start from the first-order approximation of the acoustic potential and we substitute the integral solution of (3.5), to obtain:

$$\hat{\phi}(\mathbf{x}) = \hat{\phi}_\infty + \hat{\phi}_\Delta = \hat{\phi}_\infty - \int_V \mathcal{L}_\Delta(\hat{\phi}_\infty) G \, dV. \quad (\text{A1})$$

Then, we normalise the wavenumber and Mach number inhomogeneities as $\kappa_\Delta = \kappa_\infty \delta\kappa$ and $M_\Delta = M_\infty \delta M$. Neglecting \mathcal{L}_0 , (A1) can be recast as

$$\begin{aligned} \hat{\phi}(\mathbf{x}) = \hat{\phi}_\infty - \int_V \left[(\kappa_\infty \delta\kappa)^2 + 2i\kappa_\infty M_\infty \delta\kappa \delta M \cdot \nabla - M_\infty^2 \delta M \cdot (\delta M \cdot \nabla \nabla) \right. \\ \left. + 2 \left(\kappa_\infty^2 \delta\kappa + i\kappa_\infty M_\infty \delta M \cdot \nabla + i\kappa_\infty M_\infty \delta\kappa \frac{\partial}{\partial x_1} - M_\infty^2 \delta M \frac{\partial}{\partial x_1} \nabla \right) \right] G \, dV. \end{aligned} \quad (\text{A2})$$

Let us now assume a three-dimensional domain for simplicity of the following discussions. If the size of the scatterer is of order L , then by dimensional analysis,

$$\int_V dV \sim L^3, \quad G \sim 1/L. \quad (\text{A3})$$

For the Born approximation to be valid it is required that $\hat{\phi}_\Delta \ll \hat{\phi}_\infty$ which, using (A2), leads to the following conditions:

$$\begin{aligned} (\kappa_\infty L)^2 \delta\kappa^2 \ll 1, \quad (\kappa_\infty L) M_\infty \delta\kappa \delta M \ll 1, \quad M_\infty^2 \delta M^2 \ll 1, \quad (\kappa_\infty L)^2 \delta\kappa \ll 1, \\ (\kappa_\infty L) M_\infty \delta M \ll 1, \quad (\kappa_\infty L) M_\infty \delta\kappa \ll 1 \quad \text{and} \quad M_\infty^2 \delta M \ll 1, \end{aligned} \quad (\text{A4a-g})$$

where δM is the modulus of δM .

Appendix B. Derivation of the integral formulation

An integral solution to (3.8a,b) is derived here. To this end, we first introduce the free-space Green’s function of (3.8a,b), that is,

$$\left[\tilde{\nabla}^2 + \tilde{k}_\infty^2 \right] G(\tilde{\mathbf{x}}, \tilde{\mathbf{y}}) = \delta(\tilde{\mathbf{x}} - \tilde{\mathbf{y}}). \tag{B1}$$

Next, we can form a weighted residual integral for (3.8a,b), by weighting it by this Green’s function and integrating over the volume of interest. After some manipulations, we obtain:

$$\tilde{\phi}(\mathbf{x}) = \int_V \tilde{S}G \, dV + \int_S \left(G \frac{\partial \tilde{\phi}}{\partial \tilde{\mathbf{n}}} - \tilde{\phi} \frac{\partial G}{\partial \tilde{\mathbf{n}}} \right) dS. \tag{B2}$$

We now introduce the potential $\hat{\phi}$ in the surface integrals to obtain:

$$\tilde{\phi}(\mathbf{x}) = \int_V \tilde{S}G \, dV + \int_S G \frac{\partial \hat{\phi}}{\partial \tilde{\mathbf{n}}} \exp(i\tilde{k}_\infty M_\infty \tilde{\mathbf{x}}_1) \, dS - \int_S \tilde{\phi} \left(\frac{\partial G}{\partial \tilde{\mathbf{n}}} - i\tilde{k}_\infty M_\infty \tilde{\mathbf{n}}_1 G \right) \, dS. \tag{B3}$$

To obtain a closed-form integral solution, a Green’s function that cancels the second surface integral on the aerofoil has to be obtained, hence the boundary condition that we impose on (3.9a,b).

Appendix C. Numerical convergence of the improper integrals

First, we prove analytically the convergence of $I_q^{(1)}$, i.e.

$$\begin{aligned} I_q^{(1)} &= \frac{1}{\beta_\infty^2} \int_V q Y_1 e^{i\sigma\tau} \, d\tilde{x}_1 d\tilde{x}_2 \\ &= \frac{b^3}{4\beta_\infty^4} \int_V \left[\operatorname{Re} \left(-\frac{1}{\tau^2} + \frac{1}{|\tau|^4} + \frac{1}{\tau^3} - \frac{1}{|\tau|^4 \tau} \right) \right. \\ &\quad \left. \times \operatorname{Re} \left(\tau + \frac{1}{\tau} \right) \exp \left(i \frac{St}{2\beta_\infty^2} \operatorname{Re} \left(\tau + \frac{1}{\tau} \right) \right) \right] \, d\tau_1 d\tau_2. \end{aligned} \tag{C1}$$

The integrand can be evaluated asymptotically yielding

$$I_q^{(1)} \simeq \frac{-b^3}{4\beta_\infty^4} \int_V \left[\operatorname{Re} \left(\frac{1}{\tau^2} \right) \operatorname{Re}(\tau) \exp \left(i \frac{St}{2\beta_\infty^2} \operatorname{Re}(\tau) \right) \right] \, d\tau_1 d\tau_2. \tag{C2}$$

Because $|\exp(i(St/2\beta_\infty^2)\tau)| < 1$, we can use the comparison test and the absolute convergence test to recast the convergence of the previous integral as the convergence of

$$\int_V \operatorname{Re} \left(\frac{1}{\tau^2} \right) \operatorname{Re}(\tau) \, d\tau_1 d\tau_2, \tag{C3}$$

which, using the cylindrical change of coordinates $\tau = r e^{i\theta}$, is integrated to yield

$$\int_1^\infty \int_0^{2\pi} \cos 2\theta \cos \theta \, d\theta \, dr = \lim_{R \rightarrow \infty} \int_1^R \left(\sin \theta - 8/3 \sin^3 \theta \right) \Big|_0^{2\pi} \, dr = 0, \tag{C4}$$

hence proving the convergence of (C1). This integral has the largest integrand among all the integrals arising in § 5, which proves through the comparison test that all of the integrals converge.

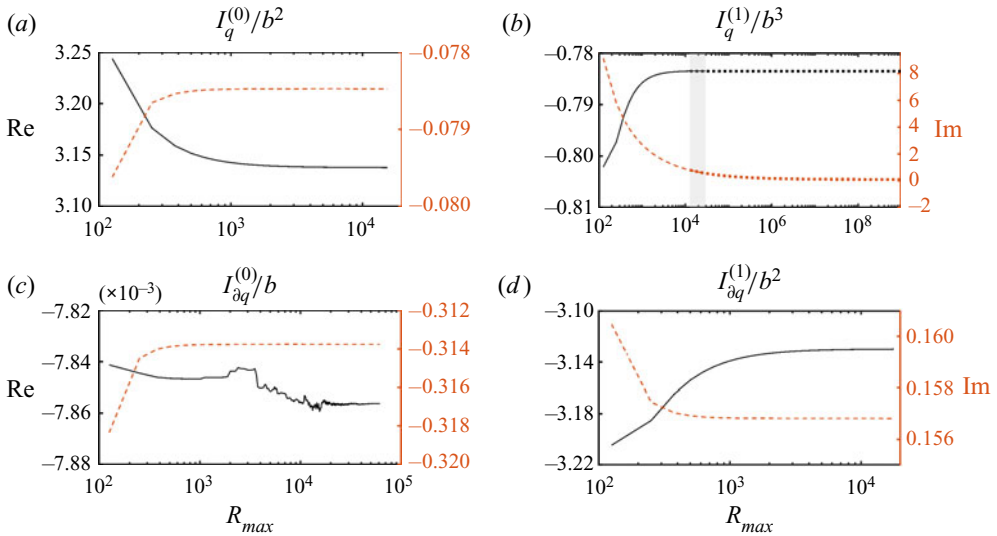


Figure 19. Convergence of the source integrals for $St = 0.1$. Real (black solid) and imaginary (red dashed) parts of the integrals (a) $I_q^{(0)}$, (b) $I_q^{(1)}$, (c) $I_{\partial q}^{(0)}$ and (d) $I_{\partial q}^{(1)}$. The dotted line in (b) corresponds to the asymptotic evaluation of the integral. Both the exact and asymptotic integrals are depicted in the grey area.

We now turn our attention to the numerical convergence of the integrals. To numerically approximate them, we truncate the limit $r \rightarrow \infty$ to a finite value R_{max} . For example, for (5.7), we compute

$$I_q^{(0)} \approx \frac{1}{\beta_\infty^3} \int_1^{R_{max}} \int_0^{2\pi} \left[r \operatorname{Re} \left\{ \frac{d\bar{F}}{d\tau} \overline{\frac{dz}{d\tau}} \right\} e^{i\sigma} \right] d\theta dr. \quad (C5)$$

Figure 19 shows that the integrals $I_q^{(0)}$, $I_{\partial q}^{(0)}$ and $I_{\partial q}^{(1)}$ can be considered converged when we integrate over a domain extending to $R_{max} \approx 10^4$. Despite the apparent large extension of the domain, these calculations can be obtained within minutes. The integral $I_q^{(1)}$, in contrast, requires a domain as large as $R_{max} \approx 10^8$ for its imaginary part to be converged. Because the area to be integrated is proportional to R_{max}^2 , the cost becomes prohibitive for this integral. To alleviate this problem, after a certain value of $r = R_0$, the integral was approximated using the asymptotic representation given by (C2), which in cylindrical coordinates reads

$$\frac{-b^3}{4\beta_\infty^4} \int_{R_0}^{R_{max}} \int_0^{2\pi} \left[\cos 2\theta \cos \theta \exp \left(i \frac{St}{2\beta_\infty^2} r \cos \theta \right) \right] d\theta dr. \quad (C6)$$

This expression can be integrated over r yielding

$$I_q^{(1)} \approx \frac{ib^3}{2\beta_\infty^2 St} \int_0^{2\pi} \cos 2\theta \left[\exp \left(i \frac{St}{2\beta_\infty^2} R_{max} \cos \theta \right) - \exp \left(i \frac{St}{2\beta_\infty^2} R_0 \cos \theta \right) \right] d\theta. \quad (C7)$$

REFERENCES

ALNÆS, M.S., BLECHTA, J., HAKE, J., JOHANSSON, A., KEHLET, B., LOGG, A., RICHARDSON, C., RING, J., ROGNES, M.E. & WELLS, G.N. 2015 The FEniCS project version 1.5. *Arch. Numer. Softw.* **3** (100), 9–23.

Downloaded from https://www.cambridge.org/core. Imperial College London Library, on 02 Aug 2021 at 09:19:55, subject to the Cambridge Core terms of use, available at https://www.cambridge.org/core/terms. https://doi.org/10.1017/jfm.2021.569

Scattering of entropy waves into sound by aerofoils

- AMESTOY, P.R., DUFF, I.S., KOSTER, J. & L'EXCELLENT, J.-Y. 2001 A fully asynchronous multifrontal solver using distributed dynamic scheduling. *SIAM J. Matrix Anal. Appl.* **23** (1), 15–41.
- AMESTOY, P.R., GUERMOUCHE, A., L'EXCELLENT, J.-Y. & PRALET, S. 2006 Hybrid scheduling for the parallel solution of linear systems. *Parallel Comput.* **32** (2), 136–156.
- ASHLEY, H. & LANDAHL, M. 1985 *Aerodynamics of Wings and Bodies*. Dover Publications.
- ATASSI, H.M. & GRZEDZINSKI, J. 1989 Unsteady disturbances of streaming motions around bodies. *J. Fluid Mech.* **209**, 385–403.
- BADDOO, P.J. & AYTON, L.J. 2020 An analytic solution for gust-cascade interaction noise including effects of realistic aerofoil geometry. *J. Fluid Mech.* **886**, A1.
- BAKE, F., RICHTER, C., MÜHLBAUER, B., KINGS, N., RÖHLE, I., THIELE, F. & NOLL, B. 2009 The entropy wave generator (EWG): a reference case on entropy noise. *J. Sound Vib.* **326** (3–5), 574–598.
- BASSI, F. & REBAY, S. 1997 High-order accurate discontinuous finite element solution of the 2D Euler equations. *J. Comput. Phys.* **138** (2), 251–285.
- BAUERHEIM, M., DURAN, I., LIVEBARDON, T., WANG, G., MOREAU, S. & POINSOT, T. 2016 Transmission and reflection of acoustic and entropy waves through a stator–rotor stage. *J. Sound Vib.* **374**, 260–278.
- BODONY, D.J. 2009 Scattering of an entropy disturbance into sound by a symmetric thin body. *Phys. Fluids* **21**, 96–101.
- BRAGG, S.L. 1963 Combustion noise. *J. Inst. Fuel* **36** (1), 12–16.
- CANDEL, S. 2002 Combustion dynamics and control: progress and challenges. *Proc. Combust. Inst.* **29**, 1–28.
- CHEN, L.S., BOMBERG, S. & POLIFKE, W. 2016 Propagation and generation of acoustic and entropy waves across a moving flame front. *Combust. Flame.* **166**, 170–180.
- CHEW, W.C. 1995 *Waves and Fields in Inhomogeneous Media*. IEEE.
- CHRISTODOULOU, L., KARIMI, N., CAMMARANO, A., PAUL, M. & NAVARRO-MARTINEZ, S. 2020 State prediction of an entropy wave advecting through a turbulent channel flow. *J. Fluid Mech.* **882**, A8.
- CHU, B.T. & KOVÁSZNAY, L.S.G. 1958 Non-linear interactions in a viscous heat-conducting compressible gas. *J. Fluid Mech.* **3**, 494–514.
- COCKBURN, B. & SHU, C.-W. 2001 Runge–Kutta discontinuous Galerkin methods for convection-dominated problems. *J. Sci. Comput.* **16** (3), 173–261.
- CRIVELLINI, A., D'ALESSANDRO, V. & BASSI, F. 2013 A Spalart–Allmaras turbulence model implementation in a discontinuous Galerkin solver for incompressible flows. *J. Comput. Phys.* **241**, 388–415.
- CUMPSTY, N.A. & MARBLE, F.E. 1977a Core noise from gas turbine exhausts. *J. Sound Vib.* **54** (2), 297–309.
- CUMPSTY, N.A. & MARBLE, F.E. 1977b The interaction of entropy fluctuations with turbine blade rows; a mechanism of turbojet engine noise. In *Proc. Roy. Soc. London Ser. A* (ed. W. Hawthorne), vol. 357, pp. 323–344. The Royal Society.
- DE DOMENICO, F., ROLLAND, E.O. & HOCHGREB, S. 2019 A generalised model for acoustic and entropic transfer function of nozzles with losses. *J. Sound Vib.* **440**, 212–230.
- DONEA, J. & HUERTA, A. 2003 *Finite Element Methods for Flow Problems*. John Wiley & Sons.
- DOWLING, A.P. 1995 The calculation of thermoacoustic oscillations. *J. Sound Vib.* **180** (4), 557–581.
- DOWLING, A.P. & MAHMOUDI, Y. 2015 Combustion noise. *Proc. Combust. Inst.* **35**, 65–100.
- DURAN, I. & MOREAU, S. 2013 Solution of the quasi-one-dimensional linearized Euler equations using flow invariants and the Magnus expansion. *J. Fluid Mech.* **723**, 190–231.
- DURAN, I., MOREAU, S., NICOU, F., LIVEBARDON, T., BOUTY, E. & POINSOT, T. 2014 Combustion noise in modern aero-engines. *Aerosp. Lab* **7**, 1–11.
- DURAN, I. & MORGANS, A.S. 2015 On the reflection and transmission of circumferential waves through nozzles. *J. Fluid Mech.* **773**, 137–153.
- EMMANUELLI, A., ZHENG, J., HUET, M., GIAUQUE, A., LE GARREC, T. & DUCRUIX, S. 2020 Description and application of a 2D-axisymmetric model for entropy noise in nozzle flows. *J. Sound Vib.* **472**, 115163.
- FATTAHI, A., HOSSEINALIPOUR, S.M. & KARIMI, N. 2017 On the dissipation and dispersion of entropy waves in heat transferring channel flows. *Phys. Fluids* **29** (8), 087104.
- FFOWCS WILLIAMS, J.E. & HOWE, M.S. 1975 The generation of sound by density inhomogeneities in low Mach number nozzle flows. *J. Fluid Mech.* **70** (3), 605–622.
- GIAUQUE, A., HUET, M. & CLERO, F. 2012 Analytical analysis of indirect combustion noise in subcritical nozzles. *Trans. ASME: J. Engng Gas Turbines Power* **134** (11), 111202.
- GIUSTI, A., WORTH, N.A., MASTORAKOS, E. & DOWLING, A.P. 2017 Experimental and numerical investigation into the propagation of entropy waves. *AIAA J.* **55** (2), 446–458.
- GOH, C.S. & MORGANS, A.S. 2011 Phase prediction of the response of choked nozzles to entropy and acoustic disturbances. *J. Sound Vib.* **330**, 5184–5198.

- GOH, C.S. & MORGANS, A.S. 2013 The influence of entropy waves on the thermoacoustic stability of a model combustor. *Combust. Sci. Technol.* **185**, 249–268.
- GOLDSTEIN, M.E. 1978 Unsteady vortical and entropic distortions of potential flows round arbitrary obstacles. *J. Fluid Mech.* **89**, 433–468.
- GREIFENSTEIN, M., HEINZE, J., WILLERT, C., VOIGT, L., ZEDDA, M., RICHTER, C. & DREIZLER, A. 2020 Time-resolved temperature profile measurements in the exhaust of a single sector gas turbine combustor at realistic operating conditions. *Exp. Fluids* **61** (8), 177.
- GUZMÁN-IÑIGO, J., BADDOO, P.J., AYTON, L.J. & MORGANS, A.S. 2019 Noise generated by entropic and compositional inhomogeneities interacting with a cascade of airfoils. In *25th AIAA/CEAS Aeroacoustics Conference*, p. 2526.
- GUZMÁN-IÑIGO, J., DURAN, I. & MORGANS, A.S. 2018 A model for the sound generated by entropy disturbances interacting with isolated blades. In *2018 AIAA/CEAS Aeroacoustics Conference*, p. 2958.
- HOSSEINALIPOUR, S.M., FATTAHI, A., KHALILI, H., TOOTOONCHIAN, F. & KARIMI, N. 2020 Experimental investigation of entropy waves' evolution for understanding of indirect combustion noise in gas turbine combustors. *Energy* **195**, 116978.
- HOWE, M.S. 1975 The generation of sound by aerodynamic sources in an inhomogeneous steady flow. *J. Fluid Mech.* **67**, 597–610.
- HOWE, M.S. 2003 *Theory of Vortex Sound*. Cambridge University Press.
- HOWE, M.S. 2010 Indirect combustion noise. *J. Fluid Mech.* **659**, 267–288.
- HU, F.Q. 2001 A stable, perfectly matched layer for linearized Euler equations in unsplit physical variables. *J. Comput. Phys.* **173** (2), 455–480.
- HUET, M., EMMANUELLI, A. & LE GARREC, T. 2020 Entropy noise modelling in 2D choked nozzle flows. *J. Sound Vib.* **488**, 115637.
- HUET, M. & GIAUQUE, A. 2013 A nonlinear model for indirect combustion noise through a compact nozzle. *J. Fluid Mech.* **733**, 268–301.
- IHME, M. 2017 Combustion and engine-core noise. *Annu. Rev. Fluid Mech.* **49**, 277–310.
- KARIMI, N., BREAR, M.J. & MOASE, W.H. 2008 Acoustic and disturbance energy analysis of a flow with heat communication. *J. Fluid Mech.* **597**, 67–89.
- KERSCHEN, E.J. & BALSAL, T.F. 1981 Transformation of the equation governing disturbances of a two-dimensional compressible. *AIAA J.* **19**, 1367–1370.
- KERSCHEN, E.J. & MYERS, M.R. 1987 Perfect gas effects in compressible rapid distortion theory. *AIAA J.* **25**, 504–507.
- KINGS, N. & BAKE, F. 2010 Indirect combustion noise: noise generation by accelerated vorticity in a nozzle flow. *Intl J. Spray Combust. Dyn.* **2** (3), 253–266.
- LEYKO, M., DURAN, I., MOREAU, S., NICOUD, F. & POINSOT, T. 2014 Simulation and modelling of the waves transmission and generation in a stator blade row in a combustion-noise framework. *J. Sound Vib.* **333** (23), 6090–6106.
- LEYKO, M., NICOUD, F. & POINSOT, T. 2009 Comparison of direct and indirect combustion noise mechanisms in a model combustor. *AIAA J.* **47** (11), 2709–2716.
- LIEUWEN, T. 2003 Modeling premixed combustion-acoustic wave interactions: A review. *J. Propul. Power* **19**, 765–781.
- LINTON, C.M. 1998 The Green's function for the two-dimensional Helmholtz equation in periodic domains. *J. Engng Maths* **33** (4), 377–401.
- LOGG, A., et al. 2012 *Automated Solution of Differential Equations by the Finite Element Method*. Springer.
- MAGRI, L. 2017 On indirect noise in multicomponent nozzle flows. *J. Fluid Mech.* **828**, R2.
- MAGRI, L., O'BRIEN, J. & IHME, M. 2016 Compositional inhomogeneities as a source of indirect combustion noise. *J. Fluid Mech.* **799**, R4.
- MARBLE, F.E. & CANDEL, S.M. 1977 Acoustic disturbance from gas non-uniformities convected through a nozzle. *J. Sound Vib.* **55**, 225–243.
- MISHRA, A. & BODONY, D.J. 2013 Evaluation of actuator disk theory for predicting indirect combustion noise. *J. Sound Vib.* **332**, 821–838.
- MOASE, W.H., BREAR, M.J. & MANZIE, C. 2007 The forced response of choked nozzles and supersonic diffusers. *J. Fluid Mech.* **585**, 281–304.
- MORFEY, C.L. 1973 Amplification of aerodynamic noise by convected flow inhomogeneities. *J. Sound Vib.* **31** (4), 391–397.
- MORGANS, A.S. & DURAN, I. 2016 Entropy noise: a review of theory, progress and challenges. *Intl J. Spray Combust.* **8** (4), 285–298.
- MORGANS, A.S., GOH, C.S. & DAHAN, J.A. 2013 The dissipation and shear dispersion of entropy waves in combustor thermoacoustics. *J. Fluid Mech.* **733**, R2.

Scattering of entropy waves into sound by aerofoils

- MYERS, M.R. 1987 Effect of airfoil mean loading on high-frequency gust interaction noise. PhD thesis. The University of Arizona.
- MYERS, M.R. & KERSCHEN, E.J. 1995 Influence of incidence angle on sound generation by airfoils interacting with high-frequency gusts. *J. Fluid Mech.* **292**, 271–304.
- MYERS, M.R. & KERSCHEN, E.J. 1997 Influence of camber on sound generation by airfoils interacting with high-frequency gusts. *J. Fluid Mech.* **353**, 221–259.
- ÖZYÖRÜK, Y. 2009 Numerical prediction of aft radiation of turbofan tones through exhaust jets. *J. Sound Vib.* **325** (1–2), 122–144.
- PEAKE, N. & KERSCHEN, E.J. 1997 Influence of mean loading on noise generated by the interaction of gusts with a flat-plate cascade: upstream radiation. *J. Fluid Mech.* **347**, 315–346.
- PEAKE, N. & KERSCHEN, E.J. 2004 Influence of mean loading on noise generated by the interaction of gusts with a cascade: downstream radiation. *J. Fluid Mech.* **515**, 99–133.
- SATTELMAYER, T. 2003 Influence of the combustor aerodynamics on combustion instabilities from equivalence ratio fluctuations. *Trans. ASME: J. Engng Gas Turbines Power* **125** (1), 11–19.
- SCOTT, J., ATASSI, H. & SUSAN-RESIGA, R. 2003 A new domain decomposition approach for the gust response problem. In *41st Aerospace Sciences Meeting and Exhibit*, p. 883.
- SCOTT, J.R. & ATASSI, H.M. 1995 A finite-difference, frequency-domain numerical scheme for the solution of the gust response problem. *J. Comput. Phys.* **119**, 75–93.
- SEMLITSCH, B., HYNES, T., LANGELLA, I., SWAMINATHAN, N. & DOWLING, A.P. 2019 Entropy and vorticity wave generation in realistic gas turbine combustors. *J. Propul. Power* **35** (4), 839–849.
- SNIEDER, R. & VAN WIJK, K. 2015 *A Guided Tour of Mathematical Methods for the Physical Sciences*. Cambridge University Press.
- STOW, S.R., DOWLING, A.P. & HYNES, T.P. 2002 Reflection of circumferential modes in a choked nozzle. *J. Fluid Mech.* **467**, 215–239.
- STRAHLE, W.C. 1976 Noise produced by fluid inhomogeneities. *AIAA J.* **14** (7), 985–987.
- STRAHLE, W.C. 1978 Combustion noise. *Prog. Energy Combust. Sci.* **4** (3), 157–176.
- TAM, C.K.W., BAKE, F., HULTGREN, L.S. & POINSOT, T. 2019 Combustion noise: modeling and prediction. *CEAS Aeronaut. J.* **10** (1), 101–122.
- TAM, C.K.W., LI, Z. & SCHUSTER, B. 2016 An investigation of the generation of indirect combustion noise in a turbo-engine. In *22nd AIAA/CEAS Aeroacoustics Conference*.
- TSAI, C.-T. 1992 Effect of airfoil thickness on high-frequency gust interaction noise. PhD thesis. The University of Arizona.
- WANG, G., LIU, X., WANG, S., LI, L. & QI, F. 2019 Experimental investigation of entropy waves generated from acoustically excited premixed swirling flame. *Combust. Flame* **204**, 85–102.
- WEILENMANN, M., DOLL, U., BOMBACH, R., BLONDÉ, A., EBI, D., XIONG, Y. & NOIRAY, N. 2020a Linear and nonlinear entropy-wave response of technically-premixed jet-flames-array and swirled flame to acoustic forcing. *Proc. Combust. Inst.* **38** (4), 6135–6143.
- WEILENMANN, M., XIONG, Y. & NOIRAY, N. 2020b On the dispersion of entropy waves in turbulent flows. *J. Fluid Mech.* **903**, R1.
- WU, T.W. & LEE, L. 1994 A direct boundary integral formulation for acoustic radiation in a subsonic uniform flow. *J. Sound Vib.* **175** (1), 51–63.
- XIA, Y., DURAN, I., MORGANS, A.S. & HAN, X. 2018 Dispersion of entropy perturbations transporting through an industrial gas turbine combustor. *Flow Turbul. Combust.* **100** (2), 481–502.
- YANG, D., GUZMÁN-IÑIGO, J. & MORGANS, A.S. 2020 Sound generation by entropy perturbations passing through a sudden flow expansion. *J. Fluid Mech.* **905**, R2.
- YOON, M. 2020 The entropy wave generation in a heated one-dimensional duct. *J. Fluid Mech.* **883**, A44.
- ZHONG, S., JIANG, H., YING, W., ZHANG, X. & HUANG, X. 2019 An efficient computation of cascade-gust interaction noise based on a hybrid analytical and boundary element method. *J. Sound Vib.* **461**, 114911.