



Monetary Policy and Dark Corners in a stylized Agent-Based Model

Stanislao Gualdi, Marco Tarzia, Francesco Zamponi, Jean-Philippe Bouchaud

► To cite this version:

Stanislao Gualdi, Marco Tarzia, Francesco Zamponi, Jean-Philippe Bouchaud. Monetary Policy and Dark Corners in a stylized Agent-Based Model. Journal of Economic Interaction and Coordination, Springer Verlag, 2016, <10.1007/s11403-016-0174-z>. <hal-01370217>

HAL Id: hal-01370217

<https://hal-centralesupelec.archives-ouvertes.fr/hal-01370217>

Submitted on 22 Sep 2016

HAL is a multi-disciplinary open access archive for the deposit and dissemination of scientific research documents, whether they are published or not. The documents may come from teaching and research institutions in France or abroad, or from public or private research centers.

L'archive ouverte pluridisciplinaire **HAL**, est destinée au dépôt et à la diffusion de documents scientifiques de niveau recherche, publiés ou non, émanant des établissements d'enseignement et de recherche français ou étrangers, des laboratoires publics ou privés.

Monetary Policy and Dark Corners in a stylized Agent-Based Model

Stanislao Gualdi,¹ Marco Tarzia,² Francesco Zamponi,³ and Jean-Philippe Bouchaud⁴

¹ *Laboratoire de Mathématiques Appliquées aux Systèmes,
École Centrale Paris, 92290 Châtenay-Malabry, France **

² *Université Pierre et Marie Curie - Paris 6, Laboratoire de Physique Théorique de la Matière Condensée,
4, Place Jussieu, Tour 12, 75252 Paris Cedex 05, France*

³ *Laboratoire de Physique Théorique, École Normale Supérieure,
UMR 8549 CNRS, 24 Rue Lhomond, 75231 Paris Cedex 05, France*

⁴ *CFM, 23 rue de l'Université, 75007 Paris, France,
and Ecole Polytechnique, 91120 Palaiseau, France.*

We generalise the stylised macroeconomic Agent-Based model introduced in our previous paper [1], with the aim of investigating the role and efficacy of monetary policy of a ‘Central Bank’, that sets the interest rate such as to steer the economy towards a prescribed inflation and employment level. Our major finding is that provided its policy is not too aggressive (in a sense detailed in the paper) the Central Bank is successful in achieving its goals. However, the existence of different equilibrium states of the economy, separated by phase boundaries (or “dark corners”), can cause the monetary policy itself to trigger instabilities and be counter-productive. In other words, the Central Bank must navigate in a narrow window: too little is not enough, too much leads to instabilities and wildly oscillating economies. This conclusion strongly contrasts with the prediction of DSGE models.

*Electronic address: stanislao.gualdi@gmail.com

Contents

| | |
|--|-----------|
| I. Introduction | 3 |
| II. Description of the model | 3 |
| A. Brief summary of the minimal “Mark-0” model | 3 |
| B. Introducing interest rates in Mark-0 | 5 |
| 1. The Central Bank policy | 5 |
| 2. The banking sector | 6 |
| 3. Households | 6 |
| 4. Firms | 7 |
| 5. Recovering Mark-0 | 8 |
| III. The “natural” behaviour of the economy (without monetary policy) | 8 |
| A. Coupling between interest rates and firms behaviour | 8 |
| B. Coupling between interest rates and household behaviour | 8 |
| IV. Monetary policy experiments | 9 |
| A. Mild vs aggressive monetary policy | 9 |
| B. The role of phase boundaries | 10 |
| C. The role of households and firms sensitivity to rates | 12 |
| D. Comparison with DSGE models | 13 |
| V. Summary, Conclusion | 13 |
| Acknowledgements | 14 |
| A. Price, production and wage updates | 14 |
| 1. The households timeline | 14 |
| 2. The firms timeline | 15 |
| B. Firms’ adaptive behaviour leads to a second order phase transition | 17 |
| C. Pseudo-code of Mark 0 | 18 |
| References | 21 |

I. INTRODUCTION

The Agent Based Model (ABM) studied in this paper is a generalisation of the baseline framework (dubbed “Mark-0”) recently introduced in [1], following previous work by the group of Delli Gatti et al. [2]. Mark-0 considers a stylised economy with firms and households, but no banks, no interest rates on loans and deposits, and therefore no direct concept of “monetary policy”. As discussed at length in [1], the original motivation of Mark-0 was mostly to illustrate the importance of phase diagrams and phase transitions in the context of ABMs, in particular the sensitivity of the state of the (artificial) economy on a subset of parameters. Small changes in the value of these parameters were indeed found to induce sharp variations in aggregate output, unemployment or inflation. In other words, endogenous crises can occur in such economies, as the result of insignificant or anecdotal changes in the environment. This possibility is quite interesting in itself, and must be contrasted with more traditional economic models, such as the popular DSGE framework [3, 4], where the dynamics is linear and only large exogenous shocks can cause havoc. As recently pointed out by O. Blanchard in a very inspiring piece [5]: *We in the field did think of the economy as roughly linear, constantly subject to different shocks, constantly fluctuating, but naturally returning to its steady state over time. [...]. The main lesson of the crisis is that we were much closer to “dark corners” – situations in which the economy could badly malfunction – than we thought.*

Because they can deal with non-linearities, heterogeneities and crises, ABM are often promoted as possible alternatives to the DSGE models used in central banks as guides for monetary policy [4, 6–8]. It is therefore clear that introducing interest rates monitored by a central bank in Mark-0 is mandatory for policy makers to develop any interest in the ABM research program. The aim of the present paper is to extend Mark-0 as to capture the effects of monetary policy on the course of the economy. We first identify and model several channels through which interest rates can feed into the behaviour of firms and households. We then study different policy experiments, whereby the “Central Bank” attempts to reach a target inflation and/or unemployment level using a Taylor rule to set the interest rate (see Eq. (3) below). We find that provided the economy is far from phase boundaries (or “dark corners” [5]) such policies can be successful, whereas too aggressive policies may in fact, unwillingly, drive the economy to an unstable state, where large swings of inflation and unemployment occur.

Our conclusions are of course based on a highly schematic model that is arguably unrealistic on several counts. However, we believe that the type of behaviour elicited by our study is in fact robust and generic. Our belief is backed by the idea – pervasive in many areas of science – that the aggregate properties of interacting entities can be classified in different phases, separated by phase boundaries across which radical changes of the emergent behaviour take place (see e.g. [9, 10, 12], and also [13–15]). Our Agent-Based framework, although simplified, contains plausible ingredients that are most probably present in reality as well, in particular the hiring/firing and wage policies of firms confronted with over- or under-production, or with a rising level of debt. Similarly, our model encodes in a schematic manner the consumption behaviour of households facing inflation and rising rates, that is in fact similar to the standard Euler equation for consumption in general equilibrium/DSGE models [3]. We have tested many variants of our baseline model and find that the overall behaviour of our artificial economy is remarkably robust. Following up on O. Blanchard’s lament [5], the existence of large swaths of the parameter space where the economy is unstable and prone to violent crises seems to be an unavoidable fact that we have to learn to confront with [9, 16].

II. DESCRIPTION OF THE MODEL

A. Brief summary of the minimal “Mark-0” model

The Mark-0 closed economy is made of firms and households. While the latter sector is represented at an aggregate level, firms are heterogeneous and treated individually. Each firm $i = 1, \dots, N_F$ at time t produces a quantity $Y_i(t)$ of perishable goods that it attempts to sell at price $p_i(t)$. It needs a number of $N_i(t) = Y_i(t)/\zeta_i$ of employees to produce $Y_i(t)$ ¹, and pays a wage $W_i(t)$. The demand D_i for good i depends on the global consumption budget of households $C_B(t)$, itself determined as a fraction of the household savings (that include the last wages), and is decreasing function of the asked price $p_i(t)$, with a price sensitivity parameter that can be tuned – see Appendix A.

To update their production, price and wage policy, firms use reasonable “rules of thumb” [1] that we detail in Appendix A. For example, production is decreased and employees are made redundant whenever $Y_i > D_i$, and vice-versa.² The adjustment speed can however be asymmetric, i.e. the ratio R of hiring to firing rates is not necessarily

¹ ζ_i is the productivity of firm i . We chose $\zeta_i = 1$ in [1] and we will stick to this choice throughout the present paper as well.

² As a consequence of these adaptive adjustments, the economy is on average always ‘close’ to the equilibrium values corresponding to

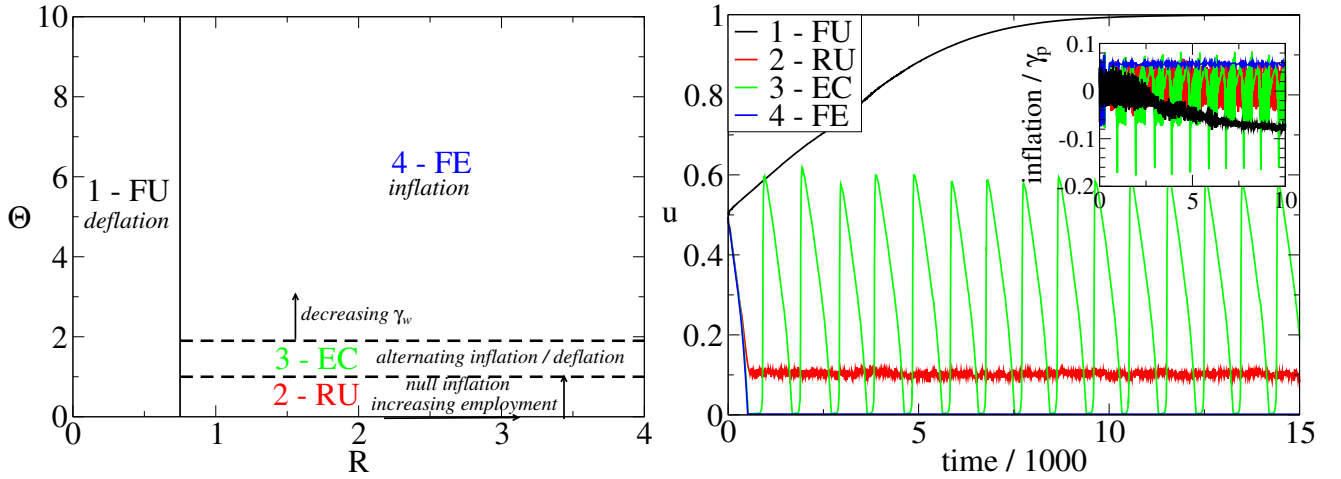


FIG. 1: (*Left*) Phase diagram in the $R - \Theta$ plane of the basic Mark-0 model as obtained in [1] with wage update. There are four distinct phases separated by critical lines. The Full Employment (FE) phase ($R > R_c$, Θ large) is characterised by positive average inflation, while there is deflation in the Full Unemployment (FU) phase ($R < R_c$). Endogenous Crises (EC) are characterised by alternating cycles of inflation and deflation, and occur for $R > R_c$, Θ intermediate. Finally, $R > R_c$, small Θ correspond to a region of small inflation and Residual Unemployment (RU). The location of phase boundaries is only weakly affected by the choice of the other parameters of Mark-0, see [1]. (*Right*) Typical trajectories of the unemployment rate $u(t)$ for each of the phases. In the inset, the price variations are shown, displaying either inflation (in the FE phase) or deflation (in the FU phase). γ_p^{-1} (resp. γ_w^{-1}) sets the characteristic time scale for price adjustments (resp. wages) in the model, see Appendix A. The surprising occurrence of endogenous oscillations in the EC phase can be fully understood analytically, see [17].

equal to one. This turns out to be one of the most important control parameter that determines the fate of the overall economy.

When the Mark-0 economy is set in motion, it soon becomes clear that some firms have to take up loans in order to stay in business. One therefore immediately has to add further rules for this to take place. In the zero-interest rate world of Mark-0, we let firms freely accumulate a total debt up to a threshold that is a multiple Θ of total payroll, beyond which the firm is declared bankrupt (its debt is then repaid partly by households and partly by surviving firms, such that there is no net creation of money). From this point of view the parameter Θ determines the maximum credit supply available to firms. Fixing the value of Θ plays the role of a primitive monetary policy, since the total amount of money circulating in the economy ('broad money') directly depends on Θ [1]. When $\Theta = 0$, no debt is allowed (zero leverage), while when $\Theta \rightarrow \infty$, firms have no limit on the loans they need to continue business (unbounded leverage).

While there are several other parameters needed to define completely Mark-0 (9 parameters in total, see Appendix A), the detailed investigation of [1] has established that R and Θ are the most relevant ones, that determine the phase-diagram of the model shown in Fig. 1, where we also plot typical trajectories of the economy in each phase. It is important to stress that this diagram is extremely robust against both details of the model specification and the value of the other parameters, which only affect the above phenomenology quantitatively, but leave the qualitative emergent behaviour essentially unchanged. Its salient features are [1]:

- When $\Theta = \infty$ the economy is characterised by two distinct phases separated by a first order (discontinuous) phase transition as a function of the parameter R . When $R < R_c$ (i.e. fast downward production adjustments), one finds at long times a collapse of the economy towards a deflationary/low demand/full unemployment state (FU). For $R > R_c$, on the other hand, the long run state of the economy is characterized by a positive inflation/high demand/full employment phase (FE).
- When $\Theta < \infty$ the above description holds but must be refined to allow for the appearance of three sub-phases for $R > R_c$:
 1. a full employment and inflationary phase for high values of Θ (the FE phase, similar to the $\Theta = \infty$ case);

the market clearing condition one would obtain in a fully representative agent framework. However, small fluctuations persists in the limit of large system sizes giving rise to a rich phenomenology.

2. a phase for intermediate values of Θ characterised by high employment and inflation on average, but that is intermittently disrupted by “endogenous crises” (EC), that temporarily bring deflation and high unemployment spikes;
3. a phase with zero inflation and residual unemployment for small Θ (the RU phase), where the impossibility to obtain loans creates a positive stationary level of bankruptcies.

Note that the surprising occurrence of endogenous oscillations in the EC phase can in fact be understood fully analytically [17] and is a robust feature that only relies on very mild assumptions about the feedback mechanisms present in the economy.

B. Introducing interest rates in Mark-0

We now introduce in the model a banking system made up of a Central Bank (CB) which sets the base interest rate $\rho_0(t)$ (and, as part of a prudential policy, the parameter Θ that controls the maximum credit supply available to firms), and a private banking system that will act as a transmission belt for the CB policy, by setting interest rates on deposits ($\rho^+(t)$) and on loans ($\rho^-(t)$). These interest rates will in turn impact the economy through three channels that we detail below: a) direct cost of loans and gains on deposits; b) behaviour of the firms; c) behaviour of households.

1. The Central Bank policy

The CB attempts to steer the economy towards a target inflation level π^* and employment level ε^* (equivalent to a target output, since the productivity ζ is set to unity in the present version of the model). The instantaneous inflation $\pi(t)$ and employment level $\varepsilon(t)$ are defined here as:

$$\pi(t) = \frac{\bar{p}(t) - \bar{p}(t-1)}{\bar{p}(t-1)}; \quad \bar{p}(t) = \frac{\sum_i p_i(t) Y_i(t)}{\sum_i Y_i(t)}, \quad (1)$$

where $\bar{p}(t)$ is the production-weighted average price, and:

$$\varepsilon(t) = \frac{1}{N} \sum_i Y_i(t), \quad u(t) = 1 - \varepsilon(t), \quad (2)$$

where N is the total workforce, and $\varepsilon(t), u(t)$ are respectively the employment and unemployment rate.

We will assume that the monetary policy followed by the CB for fixing the base interest rate is described by a standard Taylor rule of the form [3, 18]:³

$$\rho_0(t) = \rho^* + 10 \alpha_\pi [\tilde{\pi}(t) - \pi^*] + \alpha_\varepsilon \log [\tilde{\varepsilon}(t)/\varepsilon^*] \quad (3)$$

where ρ^* is the “natural” interest rate that would prevail if the target inflation π^* and target employment ε^* were reached, and $\alpha_{\pi, \varepsilon} > 0$ quantify the intensity of the policy (high values of the parameters correspond to aggressive policies). The factor 10 in front of α_π is there for convenience, such that interesting values of α_π and α_ε are of the same order of magnitude. The notation $\tilde{x}(t)$ corresponds to the exponential moving average of the variable $x(t)$, defined as:⁴

$$\tilde{x}(t+1) = \omega x(t) + (1 - \omega) \tilde{x}(t). \quad (4)$$

In order to avoid unnecessary excessive policy response when the target employment rate is too far from the actual employment rate, we actually define a one-time-step target employment rate $\hat{\varepsilon}^*$ as

$$\hat{\varepsilon}^* = \min \{1.025 \varepsilon(t), \varepsilon^*\} \quad (5)$$

meaning that if the employment rate is much lower than the policy target ε^* the CB will try to increase it by 2.5% at each time step until the target is reached. Such a regularisation was found not to be needed for inflation.

³ In Gali’s reference book [3], the quantities $\alpha_\pi, \alpha_\varepsilon$ are noted, respectively, ϕ_π and ϕ_y .

⁴ We chose $\omega = 0.2$, which corresponds to an averaging time of about $-1/\log(1 - \omega) \approx 4.5$ time steps, which roughly corresponds to 1 year in our setting.

2. The banking sector

Households in the Mark-0 economy cannot borrow and are thus characterised by their total savings $S(t) \geq 0$. Firms, on the other hand, can have either deposits ($\mathcal{E}_i > 0$) or liabilities ($\mathcal{E}_i < 0$). Defining $\mathcal{E}^+ = \sum_i \max(\mathcal{E}_i, 0)$ and $\mathcal{E}^- = -\sum_i \min(\mathcal{E}_i, 0)$, the balance sheet of the banking system reads:

$$M + \mathcal{E}^-(t) = S(t) + \mathcal{E}^+(t) \equiv \mathcal{X}(t), \quad (6)$$

where M is the amount of currency (or initial deposits) created by the central bank, which is kept fixed in time, and \mathcal{X} is the total amount of deposits, therefore to initial deposits M plus the money created by the banking system when issuing loans.

We now assume that the banking sector fixes the interest rates on deposits and loans ($\rho^+(t)$ and $\rho^-(t)$ respectively) uniformly for all lenders and borrowers according to the following rules:⁵

$$\begin{aligned} \rho^-(t) &= \rho_0(t) + f \frac{\mathcal{D}(t)}{\mathcal{E}^-(t)} \\ \rho^+(t) &= \frac{\rho_0(t)\mathcal{E}^-(t) - (1-f)\mathcal{D}(t)}{\mathcal{X}(t)}. \end{aligned} \quad (7)$$

where $\mathcal{D}(t)$ is the aggregate costs coming from all firms that just defaulted, bearing on the banking sector. The parameter $f \in [0, 1]$ reflects the impact of these defaults – either entirely on the cost of loans ($f = 1$) or on the revenue of deposits ($f = 0$). The logic behind rule Eq. (7) is that the interest rate on loan increases when defaults increase, in such a way that the profits of the banking sector are exactly zero at each time step. Indeed, one has, for any value of f :

$$\underbrace{\rho^-(t)\mathcal{E}^-(t)}_{\text{interest from loans}} - \underbrace{\rho^+(t)\mathcal{X}(t)}_{\text{interest paid on deposits loans}} - \underbrace{\mathcal{D}(t)}_{\text{cost of defaults}} \equiv 0. \quad (8)$$

Note that $\rho^+(t)$ can become negative for large enough $\mathcal{D}(t)$ when $f \neq 1$. This could be interpreted as a kind of “bail-in tax” to absorb debt in extreme cases. More realistically, one can assume that f can be dynamically tuned towards unity to avoid this situation. Finally, one could introduce an extra haircut in ρ^\pm if one wants to model a profit-seeking banking sector, but the resulting profits would somehow have to be re-injected in the economy – an extra modelling step that we avoid at this stage by assuming the above no-profit rule.

3. Households

As mentioned above, one major simplification of Mark-0 is to treat the whole household sector at the aggregate level, and is represented by only a few variables: total savings $S(t)$, total wages $W_T(t) = \sum_i W_i(t)Y_i(t)$, and total consumption budget $C_B(t)$ (which, as emphasized in [1], is in general larger than the actual consumption $C(t)$).

The effect of interest rates on households is two-fold. First, quite trivially, they receive some interest on their savings $S(t)$ that adds to the wages $W_T(t)$ and dividends as their total income. Second, the comparison between interest rates and inflation creates an incentive to consume or to save. This is in the spirit of the standard Euler equation of DSGE models where consumption is found to depend on the difference of rates on deposits $\rho^+(t)$ and inflation $\pi(t)$ (see e.g. [3, 18]). We therefore posit that the consumption budget of households $C_B(t)$ is given by:

$$C_B(t) = c(t) [S(t) + W_T(t) + \rho^+(t)S(t)] \quad \text{with} \quad c(t) = c_0 [1 + \alpha_c(\tilde{\pi}_t - \tilde{\rho}_t^+)], \quad (9)$$

where $c(t) \in [0, 1]$ is the consumption propensity (taken to be a constant in Mark-0) and $\alpha_c > 0$ is a coupling constant that determines the sensitivity of households to the (moving average of the) difference between inflation and the interest paid on their savings. The larger the difference between the two, the larger the propensity to consume, as in standard equilibrium models [18], but with undetermined phenomenological parameters c_0, α_c that should in principle be measured on micro-data (surveys, laboratory experiments, etc.).

Apart from these changes, the behaviour of households is exactly the same as in Mark-0, see [1] and Appendix A for details.

⁵ Note that the parameter f is similar to, but different from the parameter also called f in [1], which was used to share to cost of defaults on firms and households.

4. Firms

a. Financial fragility. Unlike households the N_F firms are heterogeneous and treated individually. Each firm is characterized by its production Y_i (equal to its workforce), demand for its goods D_i , price p_i , wage W_i and cash balance \mathcal{E}_i . The debt level of a firm is measured through the ratio

$$\Phi_i = -\mathcal{E}_i/(W_i Y_i), \quad (10)$$

which we interpret as an index of financial fragility. If $\Phi_i(t) < \Theta$, i.e. when the flux of credit needed from the bank is not too high compared to the size of the company (measured as the total payroll), the firm is allowed to continue its activity. If on the other hand $\Phi_i(t) \geq \Theta$, the firm defaults and contributes to total default costs $\mathcal{D}(t)$.

b. Production and wage update. If the firm is allowed to continue its business, it adapts its price, wages and productions according to reasonable “rules of thumb” – see Appendix A. In particular, the production update is chosen as:

$$\begin{aligned} \text{If } Y_i(t) < D_i(t) &\Rightarrow Y_i(t+1) = Y_i(t) + \min\{\eta_i^+(D_i(t) - Y_i(t)), u_i^*(t)\} \\ \text{If } Y_i(t) > D_i(t) &\Rightarrow Y_i(t+1) = Y_i(t) - \eta_i^-[Y_i(t) - D_i(t)] \end{aligned} \quad (11)$$

where $u_i^*(t)$ is the maximum number of unemployed workers available to the firm i at time t (see Appendix A). The coefficients $\eta^\pm \in [0, 1]$ express the sensitivity of the firm’s target production to excess demand/supply. We postulate that the production adjustment depends on the financial fragility Φ_i of the firm: firms that are close to bankruptcy are arguably faster to fire and slower to hire, and vice-versa for healthy firms. In order to model this tendency, we posit that the coefficients η_i^\pm for firm i are given by:

$$\begin{aligned} \eta_i^- &= \eta_0 \max(1 + \Gamma \Phi_i(t), 0) \\ \eta_i^+ &= R \eta_0 \max(1 - \Gamma \Phi_i(t), 0) \end{aligned} \quad (12)$$

where η_0 is a fixed coefficient, identical for all firms, and R is the propensity ratio discussed in the previous section. The factor $\Gamma > 0$ measures how the financial fragility of firms influences their hiring/firing policy, since a larger value of Φ_i then leads to a faster downward adjustment of the workforce when the firm is over-producing, and a slower (more cautious) upward adjustment when the firm is under-producing. The above definition however ensures that η^\pm always remain non-negative, i.e. the reaction of the firms is always in the intuitive direction.

It is plausible that the financial fragility of the firm also affects its wage policy: we give in Appendix A the wage update rules of Mark-0 and their modification to account for financial fragility, through the very same parameter Γ . In essence, deeply indebted firms seek to reduce wages more rapidly, whereas flourishing firms tend to increase wages quickly.

The baseline Mark-0 model corresponds to $\Gamma \equiv 0$, and leads to the phase diagram shown in Fig. 1 above. Interestingly, a non-zero value of $\Gamma = \Gamma_0$ (constant across firms and in time) changes substantially the nature of the phase transition between the full employment and full unemployment phase. The first order (discontinuous) transition for $\Gamma_0 = 0$, $\Theta = \infty$ found in [1] and shown in Fig. 1, is replaced by a second order (continuous) transition when the firms adapt their behaviour as a function of their financial fragility, i.e. when $\Gamma_0 > 0$. Moreover, the “bad” FU phase for $R < R_c$ becomes a partial unemployment phase with $u < 1$ that continuously varies with R : see Appendix B and Fig. 8 for full details. As firms become more careful, employment can be, to some extent, preserved.

The “good” phase of the economy, on the other hand, is only mildly affected by a non zero Γ_0 – for example the FE region of Fig. 1 expands downwards, which is expected since firms manage more carefully their balance sheet, reducing the occurrence of defaults.

c. The influence of interest rates on the strategy of firms. We now argue that Γ should in fact depend on the difference between the interest rate and the inflation: high cost of credit makes firms particularly wary of going into debt and their sensitivity to their financial fragility is increased. Therefore, we postulate that interest rates feedback into the behaviour of the firm primarily through the Γ parameter, that we model as:

$$\Gamma = \max\{\alpha_\Gamma(\tilde{\rho}^-(t) - \tilde{\pi}(t)), \Gamma_0\}, \quad (13)$$

where α_Γ (similarly to α_c above) captures the influence of the real interest rate on loans on the hiring/firing policy of the firms. Whenever the real interest rate stays below Γ_0/α_Γ , the response of firms to changes of interest rates is negligible (perhaps as reported in [19]), whereas larger rates lead to a substantial change in the firms policy. The case $\alpha_\Gamma = 0$ but $\Gamma_0 > 0$ corresponds to the above discussion and is interesting in itself (see Appendix B). However, since we will be mostly concerned with policy issues, we will concentrate below on the other extreme case, $\alpha_\Gamma > 0$ and $\Gamma_0 = 0$, keeping in mind that reality is probably in-between. Note that Γ as defined above is in this case zero when real interest rates are negative, and is positive otherwise.

All the above rules are to some extent arbitrary. However, they capture trends that certainly exist in the real world.

5. Recovering Mark-0

From the above discussion, we see that the core Mark-0 model of [1] is recovered whenever the baseline interest rate is zero $\rho^* = 0$, the CB is inactive ($\alpha_\pi = \alpha_\varepsilon = 0$), and households and firms are insensitive to interest rates and inflation (i.e. setting $\alpha_c = \alpha_\Gamma = 0$).

There is however a slight remaining difference with Mark-0 in the resolution of bankruptcies. The closest one can get is by setting $f = 0$, i.e. absorbing default costs only through savings. In this case the only non-zero interest rate remaining in the dynamics of the model is the one on deposits, which is negative: $\rho^+ = -\mathcal{D}(t)/\mathcal{X}(t) \leq 0$. This indeed roughly corresponds to the default resolution described in [1] where default costs are paid by households and firms savings.⁶ There are also minor differences in the time-line of the model (in particular bankruptcies are resolved before price, production and wages are updated). All these differences however have a negligible quantitative impact on the results below.

III. THE “NATURAL” BEHAVIOUR OF THE ECONOMY (WITHOUT MONETARY POLICY)

In this section we analyse the features of the model that arise from the introduction of interest rates in the Mark-0 economy, disregarding for a while any active monetary policy (i.e. setting $\alpha_\pi = \alpha_\varepsilon \equiv 0$ in Eq. (3) above). In other words, we study an economy where the baseline interest rate is equal to ρ^* , constant in time, and affects both the consumption propensity of households through the parameter α_c appearing in Eq. (9), and the firms hiring/firing propensity through the parameter α_Γ appearing in Eq. (13), with $\Gamma_0 = 0$ henceforth.

When interest rates do not feedback at all into agents’ behaviour (i.e. for $\alpha_\Gamma = \Gamma_0 = 0$ and $\alpha_c = 0$) the phenomenology of the Mark-0 model is basically unaffected; in particular the phase diagram Fig. 1 is unchanged.

A. Coupling between interest rates and firms behaviour

When $\alpha_\Gamma > 0$, on the other hand, the overall behaviour of the economy evolves as expected: as long as ρ^* is less than the inflation rate, nothing much happens, in particular because Eq. (13) gives $\Gamma = \Gamma_0 \equiv 0$ here. When ρ^* exceeds the inflation rate, one observes that the unemployment rate u starts increasing with ρ^* , while the demand for credit, and the inflation rate itself, nosedive as expected.

In Fig. 2 (left) we plot the phase diagram of the model in the $\rho^* - \Theta$ plane when $R = 2 > R_c$, and for $\alpha_\Gamma = 50$.⁷ For ρ^* smaller than a certain value $\rho^{**} \approx 1.3$, one observes the familiar three phases FE-EC-RU as Θ is decreased, as in Fig. 1. However, for a baseline rate larger than ρ^{**} , the FE and EC phase disappear entirely, and the Residual Employment phase (with $u \sim 30\%$) prevails for all values of Θ . To wit, allowing firms to accumulate more debt does not help stabilising the economy when interest rates are too high.

A look at Fig. 2 (right) allows one to understand the role of α_Γ : there we show the phase diagram in the $\rho^* - \alpha_\Gamma$ plane for a fixed value of $\Theta = 3$, such that the economy is in the Full Employment phase for $\alpha_\Gamma = 0$. A sudden phase transition between the FE and RU phases occurs for a critical value $\rho^{**}(\alpha_\Gamma)$; the larger the sensitivity to interest rates – i.e. the larger α_Γ – the smaller the critical value of ρ^{**} beyond which the economy is destabilised. It is interesting (and quite counterintuitive) that the *aggregate behaviour of the economy is not a smooth function of the interest rate*: the fact that firms are risk averse and fear going into debt leads to more unemployment that spirals into a destabilising feedback loop for large enough interest rates. This is one of the “dark corners” that ABMs can help uncovering.

B. Coupling between interest rates and household behaviour

The coupling between interest rate and consumption (captured by parameter α_c) appears to play a much smaller role, at least when α_c is chosen within a reasonable range. Its main influence is to increase the output fluctuations around the steady state, by amplifying price trends through the resulting reduction/increase in consumption. Interestingly, we find that for $\Theta \gg 1$ and independently of ρ^* , α_c has a stabilising effect on the economy: R_c shifts to lower values

⁶ To be more precise, in the default resolution described in [1] we introduce a bailout probability, called f there, which sets the relative impact of default costs on households and firms savings. In this sense, the present setting recovers the one in [1] with $f \approx 1/2$.

⁷ This value of α_Γ has the following interpretation: when the debt of a firm equals its payroll, i.e. when $\Phi_i = 1$, a real interest rate of 8% annual leads to a freezing of all hires and a doubling the firing rate, compared to a zero-debt situation.

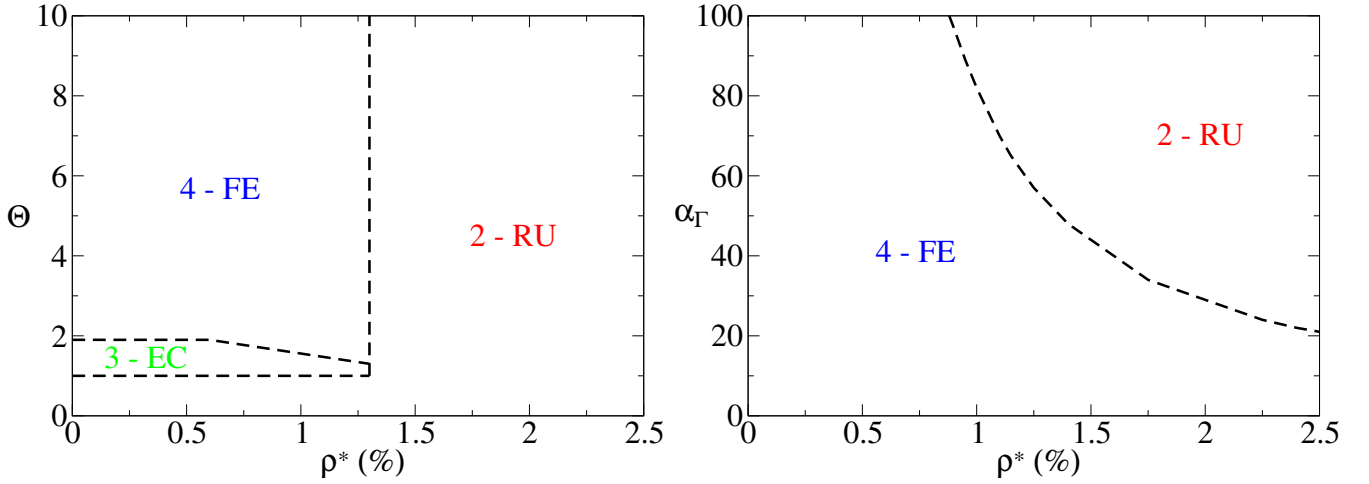


FIG. 2: *Left*: Phase diagram of the “natural” state of the economy in the $\rho^* - \Theta$ plane (i.e. with no monetary policy, $\alpha_\varepsilon = \alpha_\pi = 0$) when both firms’ and households’ decisions are sensitive to the rate level: $\alpha_\Gamma = 50$ and $\alpha_c = 4$. For small enough rates $\rho^* < \rho^{**}$, one recovers the FE-EC-RU phases as Θ is decreased. When $\rho^* > \rho^{**}$, however, the RU phase prevails for all values of Θ , which becomes irrelevant. *Right*: Phase diagram in the $\rho^* - \alpha_\Gamma$ plane for $\Theta = 3$, showing the dependence of the critical value ρ^{**} on α_Γ . The other parameters of the model are set to: $R = 2$ (with $\eta_-^0 = 0.1$), $c_0 = 0.5$, $\Gamma_0 = 0$, $\varphi = 0.1$, $\gamma_p = \gamma_w = 0.05$, $\beta = 2$, $\delta = 0.02$, $f = 0.5$, $N_F = 2000$.

as α_c increases. Clearly, micro-data is needed to estimate the value of α_c for realistic applications; below we will choose rather arbitrarily $\alpha_c = 4$, unless explicitly stated. This corresponds to a weak to moderate sensitivity to inflation/interest rates: a rise of the interest rate of 10%/year corresponds to a decrease of 10% of the consumption propensity (if one takes one time step of the model to correspond to a quarter).

IV. MONETARY POLICY EXPERIMENTS

We now consider a simple policy framework where the Central Bank adjusts the base interest rate $\rho_0(t)$ in order to achieve its inflation and employment targets. Given the simplicity of our model we are mainly interested here in gaining a qualitative understanding of the possible consequence of a Taylor-rule based monetary policy in a stylized Agent-Based framework. We defer parameter calibration, detailed comparison with simple DSGE models and more quantitative insights to future studies.

Our major finding is that provided its policy is not too aggressive and the economy not too close to a phase transition, the CB is successful in steering the economy towards its targets. However, the mere presence of different equilibrium states of the economy separated by phase boundaries (i.e. “dark corners”) may deeply alter the impact of monetary policy. Indeed, we will exhibit cases where the monetary policy *by itself* triggers large instabilities and is counter-productive.

As in the previous section, we will refer to the state obtained without any response of the CB, i.e. when $\alpha_\pi = \alpha_\varepsilon = 0$, as the “natural” state of the economy (for a given set of parameters). The corresponding “natural” value of a variable x will be denoted by x_{nat} . In order to simplify the analysis and since most of the parameters of our model play little role in the qualitative behaviour of the economy we set once and for all some of them to the values given in the caption of Fig. 2 and choose $\rho^* = 2\%$. We only focus on the four parameters defining the CB policy (i.e. α_π , α_ε , ε^* and π^*), the parameters of the transmission channels (i.e. α_c and α_Γ), and the two parameters locating the system in the phase diagram of Fig. 1 (i.e. the hiring/firing ratio R and the bankruptcy threshold Θ).

A. Mild vs aggressive monetary policy

In Fig. 3 for example, we show the result of the policy of the Central Bank that attempts to bring down the natural unemployment rate of $u_{\text{nat}} \approx 0.33$ (a rather large value corresponding to $\Theta = 2$, $R = 2$ and $\rho^* = 2\%$) to a low target of $1 - \varepsilon^* = u^* = 0.05$. The target inflation is $\pi^* = 0.2\%$ per time step (corresponding to 0.8% annual if the time step is a quarter), compared to a natural inflation that fluctuates around zero: $\pi_{\text{nat}} \approx 0$. The left graph corresponds to a

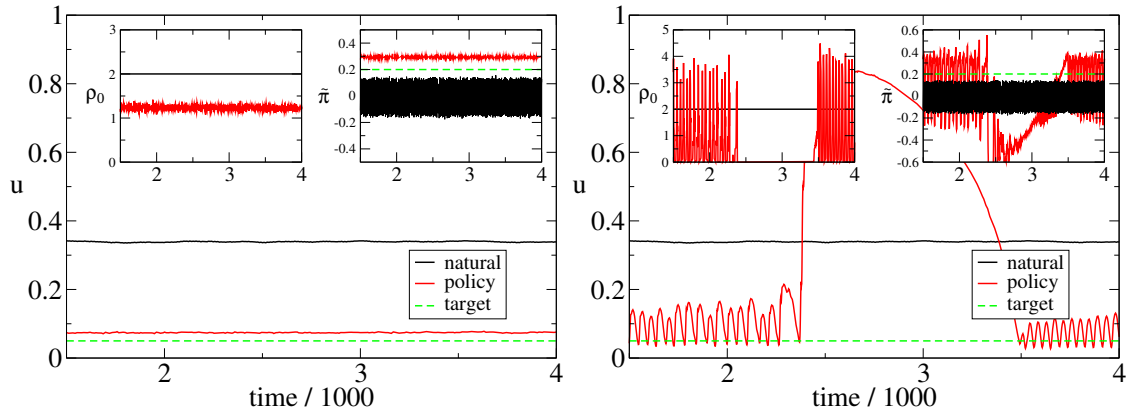


FIG. 3: In these plots we select the same natural state of the economy with $\Theta = 2$, $R = 2$, $\rho^* = 2\%$ and $\alpha_\Gamma = 50$, such $u_{\text{nat}} \approx 0.33$ and $\pi_{\text{nat}} \approx 0$ (but fluctuating). The CB sets a much lower unemployment target of $u^* = 0.05$ and an inflation target of $\pi^* = 0.2\%$. In the left plot the CB policy is moderate ($\alpha_\pi = \alpha_\varepsilon = 0.5$) and basically achieves its goals, while in the right plot the policy is aggressive ($\alpha_\pi = \alpha_\varepsilon = 1$) and destabilises the whole economy.

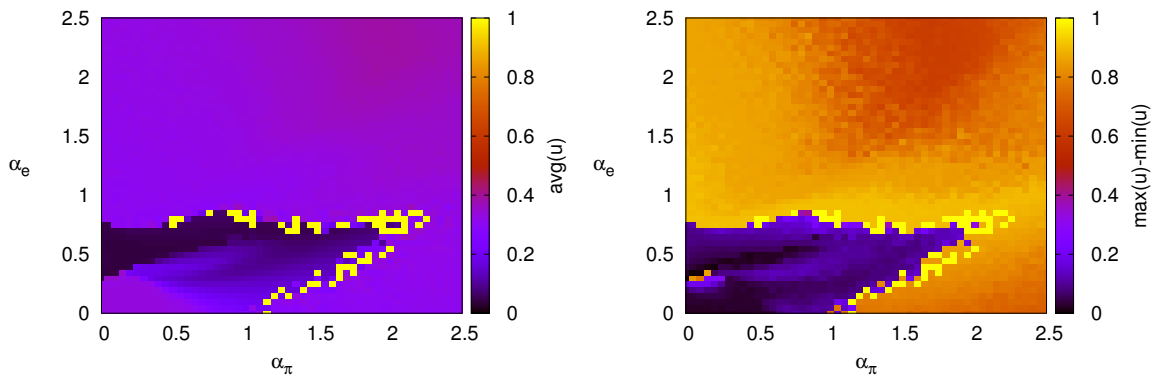


FIG. 4: Policy performance in the $(\alpha_\pi, \alpha_\varepsilon)$ plane (the origin corresponds to the natural state of the economy), for $\Theta = 2$, $R = 2$, $\rho^* = 2\%$, $\alpha_\Gamma = 50$ and $\alpha_c = 4$. The target inflation and unemployment are, respectively, $\pi^* = 0.2\%$ and $u^* = 0.05$. *Left*: Color map of the average unemployment; *Right*: Color map of the amplitude of the business cycle, measured as $\max_t(u) - \min_t(u)$. Yellow/orange regions correspond to unstable economies with crises of large amplitude. As one can see the policy is effective as long as it is not too aggressive, with a sharp transition to a regime where it become detrimental. The closer the natural economy to a phase boundary, the more destabilising the policy – see Fig. 5.

mild monetary policy, with Taylor-rule parameters set to $\alpha_\pi = \alpha_\varepsilon = 0.5$. The policy is seen to be rather successful: the inflation is on target, while unemployment goes down to $u \approx 0.07$, not far from the target of 0.05. But now look at the graph on the right, where the only difference is the aggressiveness of the CB that attempts to reach target too quickly, merely doubling the value of $\alpha_\pi = \alpha_\varepsilon \rightarrow 1$. In this case, the monetary policy has induced strong instabilities, with “business cycles” of large amplitude and inflation all over the place.

We show in Fig. 4 the result of an extensive exploration of the role of α_π and α_ε when $\Theta = 2$, $R = 2$ and $\rho^* = 2\%$. One sees that there is a wedge-like region around $\alpha_\pi = \alpha_\varepsilon = 0$ where the policy does not induce instabilities (signalled by a yellow/orange hue in Fig. 4-right). However, the region of parameters where the unemployment rate is significantly reduced is only a subset of this wedge, corresponding to the black region in Fig. 4-left, where $\alpha_\varepsilon \sim 0.5$, $\alpha_\pi \leq 0.5$. In other words, the Central Bank must navigate in a narrow window: too little is not enough, too aggressive is counterproductive and leads to instabilities and wildly oscillating economies.

B. The role of phase boundaries

The fragility of the economy is clearly due to the proximity of the phase boundary that appears in Fig. 2. As one moves away from the boundary, for example by increasing Θ , one finds that the region where the CB policy is

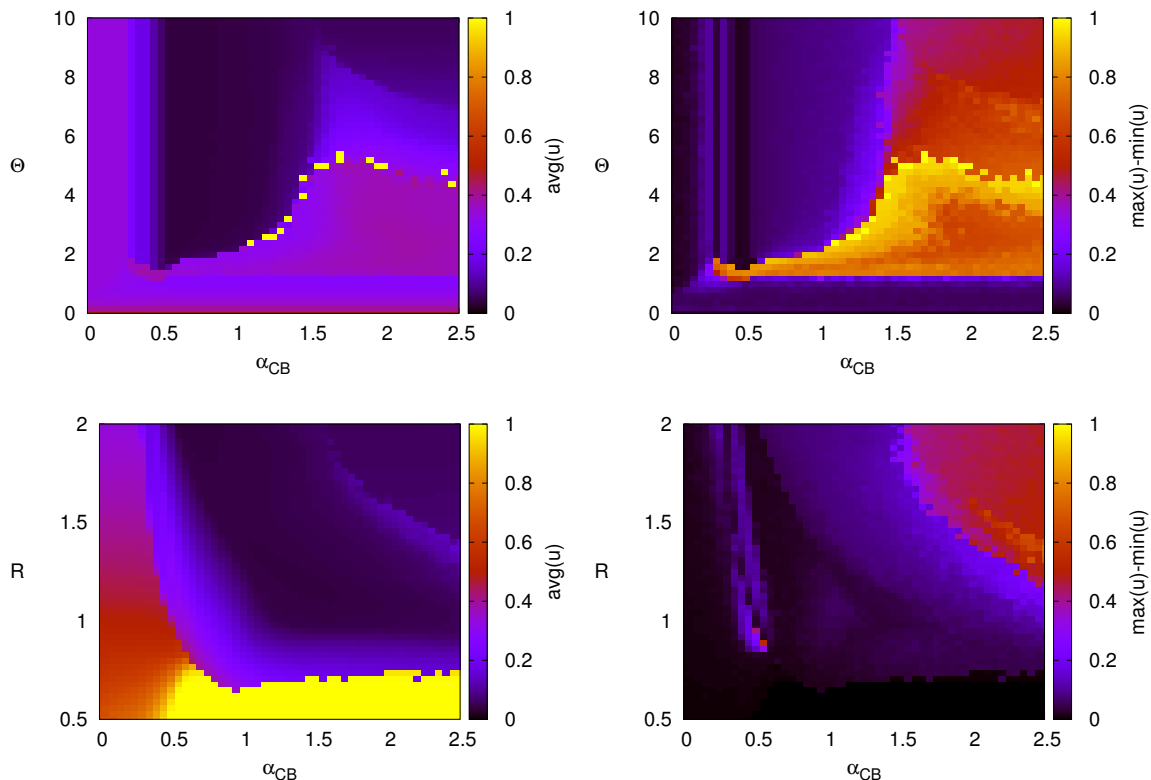


FIG. 5: A more systematic diagram of the effect observed in Fig. 4. Here we move on the diagonal of Fig. 4 on the x -axis and plot the average unemployment u and unemployment variations $\max_t(u) - \min_t(u)$ as a function of either Θ (top row, for $R = 2$) or as a function of R (bottom row, for $\Theta = 10$), still with $\alpha_\Gamma = 50$, $\alpha_c = 4$, $\pi^* = 0.2\%$ and $u^* = 0.05$. Note that since $\alpha_\Gamma > 0$, the transition at $R_c \approx 1$, $\alpha_{CB} = 0$ is second order (see Appendix B). As above, yellow/orange regions in the plots on the right, correspond to unstable economies with crises of large amplitude.

harmful shrinks. We illustrate this by moving along the line $\alpha_\pi = \alpha_\varepsilon \equiv \alpha_{CB}$ in parameter space. We display in Fig. 5 the phase diagram of the model in the α_{CB}, Θ plane and in the α_{CB}, R plane. One clearly sees from the left graph on the top row that the deep blue region (corresponding to low unemployment) expands for larger Θ , and that the yellow/orange region of the graph on the right (corresponding to strong oscillations) recedes.

The bottom graphs illustrate the role of R . One mostly observes that:

- (a) deep in the FU phase ($R < 0.75$), the monetary policy is helpless in restoring employment;
- (b) for intermediate values of R , large enough values of α_{CB} do lead to small unemployment rates;
- (c) when R and α_{CB} are simultaneously large, instabilities appear (see Fig. 5 bottom graph, right).

Point (a) above is interesting and can be understood as follows: when R is small, firms are so quick to adjust production downwards that they never need credit, and their financial fragility is low or even negative. The interest-rate impact parameter α_Γ then becomes completely ineffective in this case. This could be relevant to understand the aftermath of the 2008 crisis: if one interprets small R values as a result of a drop of confidence induced by the Lehman crisis, the above discussion suggests that a low interest rate policy might not be as effective as naively expected.

As a complement to the above analysis we also investigated the performance of the policy as a function of the distance between target and natural values. We find, not surprisingly, that when targets are not too far from the natural state of the economy the CB manages to achieve its targets without triggering any instability. When however targets are far from the natural state even a mild policy may become detrimental.

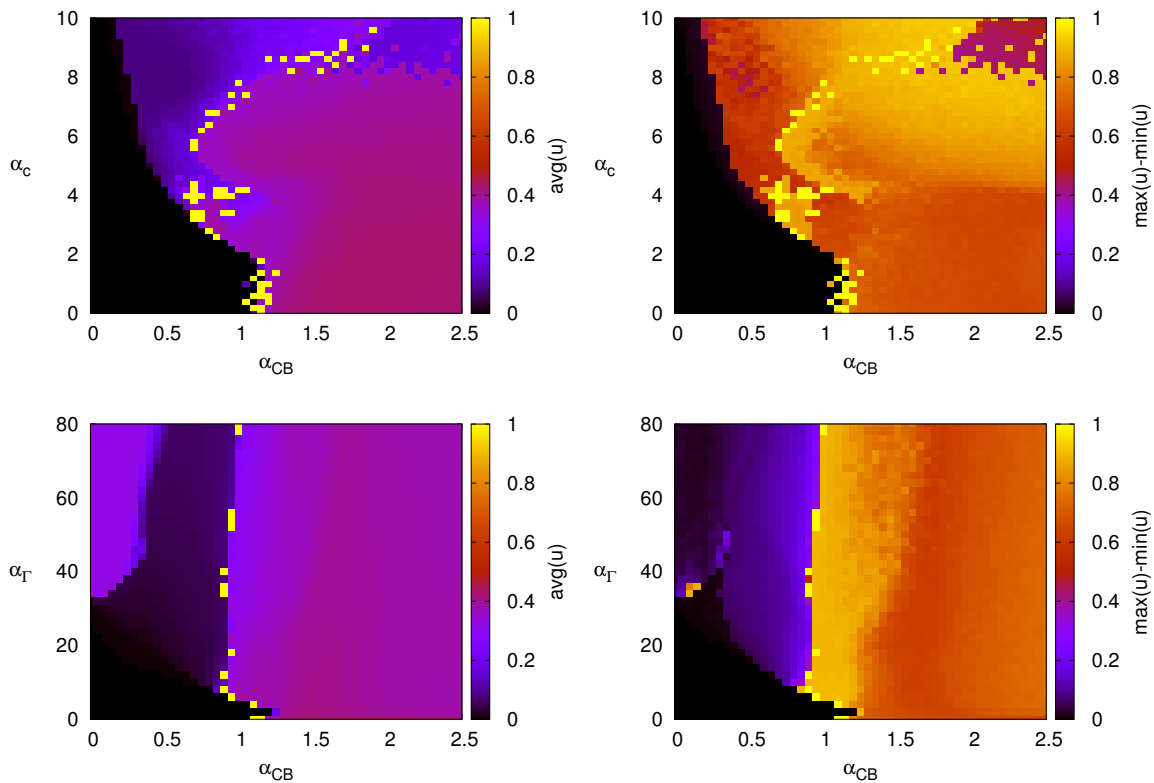


FIG. 6: Policy performance, as in the previous two plots, now separately as a function of the households sensitivity to rates α_c and the firms sensitivity to rates α_Γ . The x -axis is again $\alpha_\pi = \alpha_\varepsilon \equiv \alpha_{CB}$, whereas $\Theta = 3$, $R = 2$ and $\rho^* = 2\%$, with again $\pi^* = 0.2\%$ and $u^* = 0.05$. (*Top row*) Here $\alpha_\Gamma = 0$ and $\alpha_c > 0$. The FE (black) region prevailing for $\alpha_c = \alpha_{CB} = 0$ is destabilized beyond a certain α_{CB}^* that decreases as α_c increases. Note the constellation of yellow points that correspond to a completely broken economy. (*Bottom row*) We now set $\alpha_c = 0$ and vary $\alpha_\Gamma > 0$. When $\alpha_{CB} = 0$, one recovers the FE-RU transition for $\alpha_\Gamma \approx 30$ observed in Fig. 2. One sees that for larger α_Γ 's, the CB policy is at first successful in reinstalling the FE phase, before destabilising again the economy beyond $\alpha_{CB}^* \approx 0.9$.

C. The role of households and firms sensitivity to rates

We have also investigated the role of the two policy transmission channels (α_Γ , firms and α_c , households) separately, and found that both channels in isolation may trigger instabilities. In Fig. 6 we plot the policy performance in the (α_{CB}, α_c) plane and the $(\alpha_{CB}, \alpha_\Gamma)$ plane, with all other parameters fixed, in particular $R = 2$ and $\Theta = 3$. As expected, the top row shows that the larger the value of α_c , the more careful the monetary policy has to be in order to avoid instabilities. Note, interestingly, that there is a thin region in the (α_{CB}, α_c) plane (spot the yellow dots) where unemployment goes to $u \approx 1$, i.e. the economy is completely destabilized by the monetary policy!

The bottom row of Fig. 6 shows the interplay between policy aggressiveness α_{CB} and firms sensitivity to the real interest rate α_Γ . When $\alpha_{CB} = 0$, one recovers the FE-RU transition for $\alpha_\Gamma \approx 30$ already observed in Fig. 2. For larger α_Γ 's, the CB policy is at first successful in reinstalling the FE phase, before destabilising again the economy beyond $\alpha_{CB} \approx 0.9$. When α_Γ becomes small, a tongue of the FE region expands up to higher values of $\alpha_{CB} \approx 1.25$.

A detailed comparison between Fig. 5 (top row) and Fig. 6 (bottom row) reveals that the simultaneous presence of the two transmission channels has an overall *stabilizing* effect. Indeed, when only one channel is present (i.e. either α_c or α_Γ is zero) the value of α_{CB} beyond which the system is unstable is *smaller* than when both channels are active. For example, for $\Theta = 3$, $\alpha_c = 4$. and $\alpha_\Gamma = 50$. one sees from Fig. 5 (top row; left) that the economy is destabilized for $\alpha_{CB}^* = 1.3$, to be compared to $\alpha_{CB}^* = 0.9$ when $\alpha_c = 0$ and to $\alpha_{CB}^* = 0.5$ when $\alpha_\Gamma = 0$. We have no clear interpretation of this observation.

D. Comparison with DSGE models

It is quite interesting to compare the diagram of Fig. 4 with its DSGE counterpart (see e.g [3], section 4.3). Within the above framework, small values of $\alpha_\pi, \alpha_\varepsilon$ are at worst ineffective whereas large values of $\alpha_\pi, \alpha_\varepsilon$ lead to instabilities. This is at the opposite of what is observed in the fully rational world of DSGE models, where *small* values of $\alpha_\pi, \alpha_\varepsilon$ (called ϕ_π, ϕ_y in [3]) lead to instabilities, while large values of $\alpha_\pi, \alpha_\varepsilon$ allow the Central Bank to funnel the economy on a stability path. The intuition for this is made crystal clear by Galí in [3]: *The monetary authority should respond to deviations of inflation and the output gap from their target levels by adjusting the nominal rate with “sufficient strength”; [...] it is the presence of a “threat” of a strong response by the monetary authority to an eventual deviation of the output gap and inflation from target that suffices to rule out any such deviation in equilibrium.* In other words, fully rational, forward looking agents know that inflation will be tamed by the response of central authorities, and element that is indeed completely absent in the myopic forecast world of most ABM (including Mark-0), where agents only use their knowledge of the past and present situation and adapt their behaviour accordingly. The fact that the outcome of these two hypotheses on the stability of the economy are so radically different should be a strong caveat. Which of the two visions of the world is closest to reality is of course a matter of empirical investigation (on this point, see [11]).

V. SUMMARY, CONCLUSION

In this paper, we extended the stylized macroeconomic Agent-Based Mark-0 model introduced in [1], with the aim of investigating the role and efficacy of monetary policy. We focused on three effects induced by a non-zero interest rate in the model, that we believe to be the most important transmission channels of the Central Bank policy: i) change of the accounting rules to factor in the cost of debt and the extra revenue of deposits; ii) change of the consumption behaviour of household that depends negatively on the real interest rate and iii) change in the hiring/firing and wage policies of firms, that avoid running into debt when interest rates increase.

We first studied the model in the absence of monetary policy, i.e. without a “Taylor-rule” that creates a feedback between inflation, unemployment and interest rates. The introduction of a coupling between the financial fragility of firms and the hiring/firing and wage policies has two main effects: a) the first order (discontinuous) phase transition between a ‘good’ and a ‘bad’ phase of the economy, discussed in [1] is replaced by a second order (continuous) transition; b) a new first order transition to a phase with high residual unemployment (RU) appears as the interest rate becomes larger than some critical value, even in the region where Full Employment is achieved for zero-interest rate (i.e. $\Theta \gg 1$ in Fig. 1). The larger the sensitivity to interest rates, the smaller the value of the baseline rate beyond which the economy is destabilized. In that region, allowing firms to accumulate more debt does not help stabilising the economy.

We then allowed the Central Bank to adjust the baseline rate so as to steer the economy towards prescribed levels of inflation and employment. Our major finding is that provided its policy is not too aggressive (i.e. when the targets are not too far from the ‘natural’ state of the economy, and for a low enough adjustment speed) the Central Bank is successful in achieving its goals. However, the mere presence of different states of the economy separated by phase boundaries, besides being interesting *per se*, can cause the monetary policy itself to trigger instabilities and be counter-productive. The destabilizing influence of the Central Bank also depends on the firms/households sensitivities to rates. Perhaps ironically, too small sensitivities make the Central Bank policy inefficient, but too large sensitivities make the same policy dangerous. Seen differently, the Central Bank must navigate in a narrow window: too little is not enough, too much leads to instabilities and wildly oscillating economies [20]. As mentioned in the last paragraph, this conclusion strongly contrasts with the prediction of DSGE models.

As we emphasized in the introduction, the key message of both our previous paper [1] and the present one is that even over-simplified macroeconomic ABMs generically display a rich phenomenology with an economy characterised by different states separated by phase boundaries across which radical changes of the emergent behaviour take place. These are, we believe, the “dark corners” alluded to by O. Blanchard in [5], that both academics and policy maker should account for and wrestle with. We believe that the major advantage of ABMs over DSGE-like models is the very possibility of crises at the aggregate level, mediated by generic feedback mechanisms whose destabilising role may not be immediately obvious or intuitive. Rather than the precisely calibrated predictive tools that standard equilibrium models claim to provide [16], ABMs offer extremely valuable qualitative tools for generating scenarios, that can be used to foresee the unintended consequences of some policy decisions. Some of this outcomes, which would be “Black Swans” [21] in a DSGE framework, can in fact be fully anticipated by schematic ABMs. As expressed with remarkable insight by Mark Buchanan [22]: *Done properly, computer simulation represents a kind of “telescope for the mind,” multiplying human powers of analysis and insight just as a telescope does our powers of vision. With simulations, we can discover relationships that the unaided human mind, or even the human mind aided with the best mathematical*

analysis, would never grasp. We could not agree more.

Acknowledgements

This work was partially financed by the CRISIS project. We want to thank all the members of CRISIS for most useful discussions, in particular during the CRISIS meetings. The input and comments of T. Assenza, J. Batista, E. Beinhocker, D. Challet, D. Delli Gatti, D. Farmer, J. Grazzini, C. Hommes, F. Lillo, G. Tedeschi; S. Battiston, A. Kirman, A. Mandel, M. Marsili and A. Roventini are warmly acknowledged. JPB also wants to sincerely thank J.-C. Trichet and A. Haldane for very encouraging comments on this endeavor.

Appendix A: Price, production and wage updates

1. The households timeline

- At the beginning of the time step households are characterised by a certain amount of savings $S(t) \geq 0$.
- After each firm chose its production $Y_i(t)$, price $P_i(t)$ and wage $W_i(t)$ for the current time step (see later) wages are paid. Since firms use a one-to-one linear technology taking only labor as input and productivity is set to 1, the production equal the workforce of the firm. Hence, the total amount of wages paid is given by

$$W_T(t) = \sum_i W_i(t) Y_i(t) \quad (\text{A1})$$

- Once the total payroll of the economy is determined, interests on deposits are paid and households set a consumption budget as

$$C_B(t) = c(t)[S(t) + W_T(t) + \rho^+(t)S(t)] \quad \text{with} \quad (\text{A2})$$

where $c(t) \in [0, 1]$ is the propensity to consume and may depend on inflation/interests on deposits, see Eq. (9).

- The consumption budget is distributed among firms using an intensity of choice model [24]. The demand of goods for firm i is therefore:

$$D_i(t) = \frac{C_B(t)}{p_i(t)} \frac{e^{-\beta p_i(t)/\bar{p}(t)}}{\sum_i e^{-\beta p_i(t)/\bar{p}(t)}}, \quad (\text{A3})$$

where β is the price sensitivity parameter determining an exponential dependence of households demand in the price offered by the firm. Indeed, $\beta = 0$ corresponds to complete price insensitivity and $\beta \rightarrow \infty$ means that households select only the firm with the lowest price. In this sense, as long as $\beta > 0$ firms compete on prices.

- The *actual* consumption $C(t)$ (limited by production) is given by

$$C(t) := \sum_{i=1}^{N_F} p_i(t) \min \{Y_i(t), D_i(t)\} \leq C_B(t) = \sum_{i=1}^{N_F} p_i(t) D_i(t) \quad (\text{A4})$$

and households accounting therefore reads

$$S(t+1) = [1 + \rho^+(t)]S(t) + W_T(t) - \sum_i P_i(t) \min \{D_i, Y_i\} + \Delta(t) \quad (\text{A5})$$

where $\Delta(t)$ are dividends paid (see below for a definition of this last term).

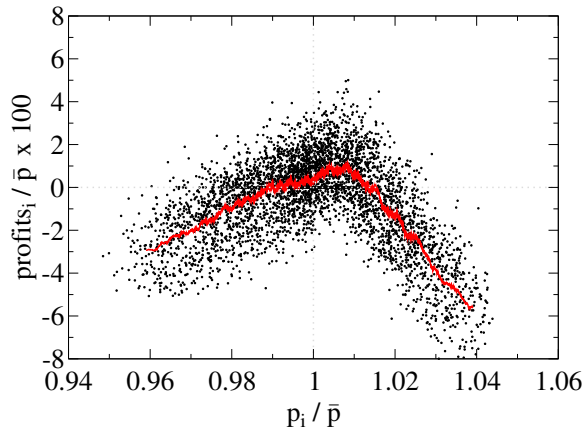


FIG. 7: Scatter plot in one time step of firm profits vs the price offered. The red line correspond to a moving flat average of 100 consecutive points. Parameters are: $R = 2$ (with $\eta_-^0 = 0.1$), $\Theta = 2$, $\gamma_p = \gamma_w = 0.05$, $\alpha_\Gamma = 50$, $\Gamma_0 = 0$, $\beta = 2$, $\alpha_c = 4.$, $N = 5000$ and $\rho^* = 0.5\%$.

2. The firms timeline

- At the beginning of the time step t firms with $\Phi_i(t) \geq \Theta$ become inactive and are removed from the simulation. Default costs are computed as

$$\mathcal{D}(t) = - \sum_{i \text{ bankrupt}} \mathcal{E}_i(t). \quad (\text{A6})$$

Firms with $\Phi_i(t) < \Theta$ are instead allowed to continue their activity and contribute to total loans $\mathcal{E}^-(t)$ and total firms savings $\mathcal{E}^+(t)$ as

$$\begin{aligned} \mathcal{E}^- &= - \sum_{i \text{ not bankrupt}} \min \{ \mathcal{E}_i(t), 0 \} \\ \mathcal{E}^+ &= \sum_{i \text{ not bankrupt}} \max \{ \mathcal{E}_i(t), 0 \}. \end{aligned} \quad (\text{A7})$$

- Active firms set production, price and wage for the current time step following simple adaptive rules which are meant to represent an heuristic adjustment. In particular:

- Price:

Prices are updated through a random multiplicative process which takes into account the production-demand gap experienced in the previous time step and if the price offered is competitive (with respect to the average price). The update rule for prices reads:

$$\begin{aligned} \text{If } Y_i(t) < D_i(t) &\Rightarrow \begin{cases} \text{If } p_i(t) < \bar{p}(t) &\Rightarrow p_i(t+1) = p_i(t)(1 + \gamma_p \xi_i(t)) \\ \text{If } p_i(t) \geq \bar{p}(t) &\Rightarrow p_i(t+1) = p_i(t) \end{cases} \\ \text{If } Y_i(t) > D_i(t) &\Rightarrow \begin{cases} \text{If } p_i(t) > \bar{p}(t) &\Rightarrow p_i(t+1) = p_i(t)(1 - \gamma_p \xi_i(t)) \\ \text{If } p_i(t) \leq \bar{p}(t) &\Rightarrow p_i(t+1) = p_i(t) \end{cases} \end{aligned} \quad (\text{A8})$$

where $\xi_i(t)$ are independent uniform $U[0, 1]$ random variables and γ_p is a parameter setting the relative magnitude of the price adjustment (we set it to 5% unless stated otherwise). That these rules lead to a reasonable emergent behaviour of firms can be checked in Fig. 7 where we show the average profit of firms as a function of the offered price. As expected, the profit reaches a maximum for prices slightly above the average price $\bar{p}(t)$. Higher prices are not competitive and firms lose clients, while lower prices do not cover production costs.

- Production:

Independently of their price level, firms try to adjust their production to the observed demand. When

firms want to hire, they open positions on the job market; we assume that the total number of unemployed workers, which is $N_F u(t)$, is distributed among firms according to an intensity of choice of model which depends on both the wage offered by the firm⁸ and on the same parameter β as it is for Eq. (A3); therefore the maximum number of available workers to each firm is:

$$u_i^*(t) = \frac{e^{\beta W_i(t)/\bar{w}(t)}}{\sum_i e^{\beta W_i(t)/\bar{w}(t)}} N_F u(t) . \quad (\text{A9})$$

The production update is then defined as:

$$\begin{aligned} \text{If } Y_i(t) < D_i(t) &\Rightarrow Y_i(t+1) = Y_i(t) + \min\{\eta_i^+(D_i(t) - Y_i(t)), u_i^*(t)\} \\ \text{If } Y_i(t) > D_i(t) &\Rightarrow Y_i(t+1) = Y_i(t) - \eta_i^-[Y_i(t) - D_i(t)] \end{aligned} \quad (\text{A10})$$

where $\eta^\pm \in [0, 1]$ are what we denote as the hiring/firing propensity of the firms. According to this mechanism, the change in output responds to excess demand (there is an increase in output if excess demand is positive, a decrease in output if excess demand is negative, i.e. if there is excess supply). The propensities to hire/fire η_\pm are the sensitivity of the output change to excess demand/supply.

- **Wage:**

The wage update rule we chose follows (in spirit) the choices made for price and production. We propose that at each time step firm i updates its wage as:

$$\begin{aligned} W_i^T(t+1) &= W_i(t)[1 + \gamma_w(1 - \Gamma\Phi_i)\varepsilon\xi'_i(t)] \quad \text{if} \quad \begin{cases} Y_i(t) < D_i(t) \\ \mathcal{P}_i(t) > 0 \end{cases} \\ W_i(t+1) &= W_i(t)[1 - \gamma_w(1 + \Gamma\Phi_i)u\xi'_i(t)] \quad \text{if} \quad \begin{cases} Y_i(t) > D_i(t) \\ \mathcal{P}_i(t) < 0 \end{cases} \end{aligned} \quad (\text{A11})$$

where γ_w is a certain parameter, $\mathcal{P}_i(t)$ is the profit of the firm at time t and $\xi'_i(t)$ an independent $U[0, 1]$ random variable. If $W_i^T(t+1)$ is such that the profit of firm i at time t with this amount of wages would have been negative, $W_i(t+1)$ is chosen to be exactly at the equilibrium point where $\mathcal{P}_i(t) = 0$ otherwise $W_i(t+1) = W_i^T(t+1)$.

The above rules are intuitive: if a firm makes a profit and it has a large demand for its good, it will increase the pay of its workers. The pay rise is expected to be large if the firm is financially healthy and/or if unemployment is low (i.e. if ε is large) because pressure on salaries is high. Conversely, if the firm makes a loss and has a low demand for its good, it will reduce the wages. This reduction is drastic if the company is close to bankruptcy, and/or if unemployment is high, because pressure on salaries is then low. In all other cases, wages are not updated.

The parameters $\gamma_{p,w}$ allow us to simulate different price/wage update timescales. In the following we set $\gamma_p = 0.05$ and $\gamma_w = z\gamma_p$ with $z \in [0, 1]$. The case $z = 0$ clearly corresponds to removing completely the wage update rule, such that the version of the model with constant wage is recovered.

- After prices, productions and wages are set and interests paid, consumption and accounting take place. Since each firm has total sales $p_i \min\{Y_i, D_i\}$ firms profits are

$$\mathcal{P}_i(t) = p_i(t) \min\{Y_i(t), D_i(t)\} - W_i(t)Y_i(t) + \rho^+ \max\{\mathcal{E}_i(t), 0\} + \rho^- \min\{\mathcal{E}_i(t), 0\} . \quad (\text{A12})$$

When firms have both positive \mathcal{E}_i and \mathcal{P}_i dividends are paid as a fraction δ of the firm cash balance \mathcal{E}_i . The update rule for firms cash balance is therefore

$$\mathcal{E}_i(t+1) = \mathcal{E}_i(t) + \mathcal{P}_i(t) - \delta\mathcal{E}_i(t)\theta(\mathcal{P}_i(t))\theta(\mathcal{E}_i(t)) \quad (\text{A13})$$

where $\theta(x) = 1$ if $x > 0$ and 0 otherwise. Correspondingly, households savings are updated as

$$S(t+1) = S(t) - \sum_i \mathcal{P}_i(t) + \delta \sum_i \mathcal{E}_i(t)\theta(\mathcal{P}_i(t))\theta(\mathcal{E}_i(t)). \quad (\text{A14})$$

⁸ A higher wage translates in the availability of a larger share of unemployed workers in the hiring process.

The dividends share δ is set to 2% unless stated otherwise and the $\Delta(t)$ term in Eq. A5 is given by

$$\Delta(t) = \delta \sum_i \mathcal{E}_i(t) \theta(\mathcal{P}_i(t)) \theta(\mathcal{E}_i(t)) \quad (\text{A15})$$

- Finally, an inactive firm has a finite probability φ (which we set to 0.1) per unit time to get revived; when it does so its price is fixed to $p_i(t) = \bar{p}(t)$, its wage to $w_i(t) = \bar{w}(t)$, its workforce is the available workforce $Y_i(t) = \mu u(t)$ and its cash-balance is the amount needed to pay the wage bill $\mathcal{E}_i(t) = W_i(t)Y_i(t)$. This small ‘liquidity’ is provided by firms with positive \mathcal{E}_i in shares proportional to their wealth \mathcal{E}_i .

Appendix B: Firms’ adaptive behaviour leads to a second order phase transition

We start by analysing the effect of adaptation of firms. In order to get a first insight it is useful to consider a simplified setting where $\Gamma = \Gamma_0$ (i.e. $\alpha_\Gamma = 0$), $\rho^-(t) = \rho_0(t) = 0$, $f = 1$, $c(t) = c_0 = 0.5$ (hence $\alpha_c = 0$) and wages are constant and equal to 1 ($\gamma_w = 0$). In this case the basic model described in [1] (with constant wages) is recovered.

Intuitively, the coupling between financial fragility and hiring/firing propensity should have a stabilising effect on the economy. Moreover, the full unemployment phase at $R < R_c$ is deeply affected by the presence of α_Γ : for $\alpha_\Gamma \neq 0$ the unemployment rate in this phase is no longer one, but becomes smaller than one and continuously changing with R . In order to derive an estimate of these continuous values we use an intuitive argument (at $\Theta = \infty$) which is justified a posteriori by the good match with numerical results. Given the critical ratio $R = \eta_+^0/\eta_-^0 = R_c$ separating the high/low unemployment phases when there is no adaptation (i.e. $\Gamma_0 = 0$) one can expect that equilibrium values of the unemployment rate different from 0 and 1 can only be stable if η_+^i/η_-^i remains around the critical value R_c at $\Gamma_0 = 0$. Near criticality therefore we enforce that:

$$\frac{\eta_+^i}{\eta_-^i} = \frac{\eta_+^0(1 - \Gamma_0\Phi_i)}{\eta_-^0(1 + \Gamma_0\Phi_i)} = R_c \quad \Rightarrow \quad -\Gamma_0\Phi \approx \frac{R_c\eta_-^0 - \eta_+^0}{R_c\eta_-^0 + \eta_+^0}. \quad (\text{B1})$$

An explicit form of Φ in terms of the employment rate $\varepsilon = \bar{Y}$ can be obtained with the additional assumption that the system is always close to equilibrium (i.e. $p \approx 1$ and $D \approx Y$, at least when $\eta_+^i/\eta_-^i \sim R_c$), which allows one to express households savings in terms of the firms’ production. Indeed (see the discussion in ??) at equilibrium $W = B = N_F Y = c(W + S)$, from which it follows that $N_F Y = W = Sc/(1 - c)$. For $c = 0.5$ as in our simulations one thus has $S = N_F Y$. Since the total amount of money is conserved (in our simulations $N_F \bar{\mathcal{L}} + S = N_F \bar{\mathcal{L}} + N_F Y = N_F$, see Appendix C) one finally obtains that $\bar{\mathcal{L}} = 1 - Y$ and $\Phi = (Y - 1)/Y = (\varepsilon - 1)/\varepsilon$ (recall that in our simulations $\mu = 1$), hence

$$\frac{\Gamma_0}{\varepsilon} = \frac{R_c\eta_-^0 - \eta_+^0}{R_c\eta_-^0 + \eta_+^0} + \Gamma_0 = \frac{R_c - R}{R_c + R} + \Gamma_0. \quad (\text{B2})$$

Note that according to this formula the employment goes to $\varepsilon = 1$ at the critical point $R = R_c$. Above this value, the economy is in the “good” state and employment sticks to $\varepsilon = 1$ (this is because in the argument the effect of Θ has been neglected). Moreover, when $R = R_c$, ε is proportional to Γ_0 and therefore in the limit $\Gamma_0 \rightarrow 0$ one has $\varepsilon = 0$ for all $R < R_c$. This is the “bad” phase of full unemployment at $\Gamma_0 = 0$, which becomes in this case a phase where employment grows steadily but remains of order Γ_0 except very close to the critical point.

Eq. (B2) is plotted in Fig. 8 together with numerical results. Note that in this case the representative firm approximation ($N_F = 1$) is in good agreement with numerical results also for $N_F = 10,000$, as it was for the discontinuous transition obtained for $\Gamma = 0$. In the inset of Fig. 8 one can see that the variance of the fluctuations of employment rate is diverging as long as the critical value of R is approached. This is confirmed by a spectral analysis of the unemployment time series (see Fig. 9). In order to obtain the power spectrum we apply the GSL Fast Fourier Transform algorithm to the time series $\varepsilon(t) - \langle \varepsilon \rangle$. As one can see in Fig. 9 the power spectrum is well approximated by an Ornstein-Uhlenbeck form:

$$I(\omega) = I_0 \frac{\omega_0^2}{\omega_0^2 + \omega^2} \quad (\text{B3})$$

with ω_0 going linearly to 0 when η_+^0 approaches its critical value, meaning that the relaxation time ω_0^{-1} diverges as one approaches the critical point. Note that this is not the case for the Mark 0 model with $\Gamma_0 = 0$ which instead has a white noise power spectrum even in proximity of the transition line. The first order (discontinuous) transition for

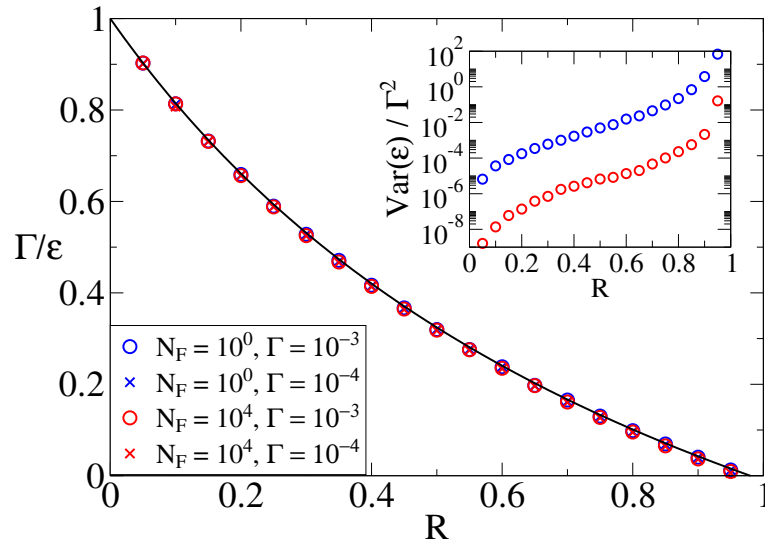


FIG. 8: Inverse of the average employment rate $\Gamma_0/\bar{\varepsilon}$ as a function of the ratio $R = \eta_+^0/\eta_-^0$ with $\eta_-^0 = 0.1$ and $\gamma = 0.01$ when $\Gamma_0 > 0$. When the employment rate is rescaled with the parameter Γ_0 (here $\Gamma_0 = 10^{-3}, 10^{-4}$) the different lines collapse and Eq. (B2) agrees with numerical simulations. In the inset we also plot the rescaled variance, still as a function of η_+^0 . Approaching the critical point the variance of the unemployment fluctuations diverges, together with their relaxation time going to infinity. The other parameters are: $\delta = 0.02$, $\Theta = 5$, $\gamma_w = 0$, $c = 0.5$, $\beta = 0$ and $\varphi = 0.1$

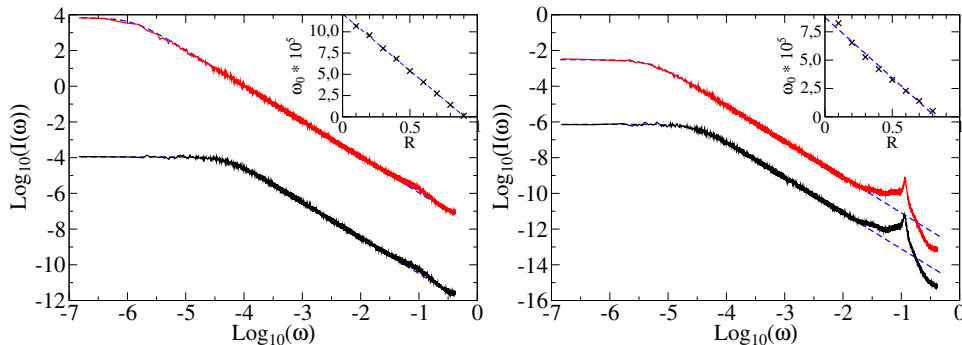


FIG. 9: Logarithm of the normalised power spectrum for Mark 0 with adaptive firms ($\Gamma_0 = 10^{-3}$), $\gamma_p = 0.05$ and $N_F = 1$ (left) and $N_F = 1000$ (right). The other parameters are set as in Fig. 8. The main plot show two examples of the spectrum for $\eta_-^0 = 0.1$ and $\eta_+^0 = 0.05$ (black line) and $\eta_+^0 = 0.09$ (red line) in the left plot, $\eta_+^0 = 0.05$ (black line) and $\eta_+^0 = 0.08$ (red line) in the right plot. The time series is made of 2^{28} time steps after $T_{eq} = 500\,000$ and the logarithm of the spectrum is averaged over a moving window of 100 points for a better visualisation. With both system sizes the fit with Eq. (B3) (blue dashed lines) is good with the only difference that when $N_F > 1$ a clear oscillatory patterns appear at high frequencies, that becomes sharper and sharper as N_F increases. In the inset of each figure we plot the value of ω_0 in Eq. (B3) obtained from the fit as a function of the ratio $R = \eta_+^0/\eta_-^0$. In both cases ω_0 goes linearly to 0 as the critical value is approached.

$\Gamma_0 = 0, \Theta = \infty$ is thus replaced by a second order (continuous) transition when the firms adapt their behaviour as a function of their financial fragility.

Finally, note that the presence of a continuum of states for the unemployment rate whenever $\Gamma_0 > 0$ and $R < R_c$ holds also with $\gamma_w > 0$ (when wages are not constant). It was however simpler to perform analytical computations with constant wages.

Appendix C: Pseudo-code of Mark 0

We present here the pseudo-code for the Mark 0 code described in Sec. IIB and Appendix A. The source code of the baseline Mark-0 is available on the site of the CRISIS project (www.crisis-economics.eu).

Algorithm 1 Mark 0

Require: N_F Number of firms; $c_0, \beta, \gamma_p, \gamma_w, \eta_+^0, \eta_-^0, \delta, \Theta, \varphi, f, \alpha_c, \alpha_\pi, \alpha_\varepsilon, \alpha_\Gamma, \Gamma_0$; T total evolution time;

▷ **Initialisation**

for ($i \leftarrow 0; i < N_F; i \leftarrow i + 1$) **do**

$W[i] \leftarrow 1$

$p[i] \leftarrow 1 + 0.2(\text{random} - 0.5)$

$Y[i] \leftarrow [1 + 0.2(\text{random} - 0.5)]/2$

$D[i] \leftarrow 0.5$

$\mathcal{E}[i] \leftarrow W[i]Y[i] 2 \text{ random}$

$a[i] \leftarrow 1$

▷ Initial employment is 0.5

end for

$S \leftarrow N_F - \sum_i \mathcal{E}[i]$

▷ **Main loop**

for ($t \leftarrow 1; t \leq T; t \leftarrow t + 1$) **do**

$u \leftarrow 1 - \frac{1}{N_F} \sum_i Y[i]$

$\varepsilon \leftarrow \frac{1 - u}{\sum_i p[i]Y[i]}$

$\bar{p} \leftarrow \frac{\sum_i Y[i]}{\sum_i Y[i]}$

$\bar{w} \leftarrow \frac{\sum_i W[i]Y[i]}{\sum_i Y[i]}$

$u^*[i] \leftarrow \frac{\exp(\beta W[i]/\bar{w})}{\sum_i \frac{\exp(\beta W[i]/\bar{w})}{a[i] \exp(\beta W[i]/\bar{w})}} N_F u$

$\tilde{x} \leftarrow \omega x + (1 - \omega)\tilde{x}$ where x are π, ρ^+, ρ^-, u

$\Gamma \leftarrow \max\{\alpha_\Gamma(\tilde{\rho}^- - \tilde{\pi}), \Gamma_0\}$

deficit $\leftarrow \mathcal{E}^- = \mathcal{E}^+ = 0$

▷ **Firms update prices, productions and wages**

for ($i \leftarrow 0; i < N_F; i \leftarrow i + 1$) **do**

if $a[i] == 1$ **then**

if $\mathcal{E}[i] > -\Theta W[i]Y[i]$ **then**

$x \leftarrow -\frac{\mathcal{E}[i]}{W[i]Y[i]}$

$x \leftarrow \min\{x, 1\}$

$x \leftarrow \max\{x, -1\}$

$\eta_+ \leftarrow \eta_+^0(1 - \Gamma x)$

$\eta_- \leftarrow \eta_-^0(1 + \Gamma x)$

if $Y[i] < D[i]$ **then**

if $\mathcal{P}[i] > 0$ **then**

$W[i] \leftarrow W[i][1 + \gamma_w(1 - \Gamma x)\varepsilon \text{ random}]$

$W[i] \leftarrow \min\{W[i], (P[i] \min\{D[i], Y[i]\} + \rho^+ \max\{\mathcal{E}[i], 0\} + \rho^- \min\{\mathcal{E}[i], 0\})/Y[i]\}$

end if

$Y[i] \leftarrow Y[i] + \min\{\eta_+(D[i] - Y[i]), u^*[i]\}$

if $p[i] < \bar{p}$ **then** $p[i] \leftarrow p[i](1 + \gamma_p \text{ random})$

end if

else if $Y[i] > D[i]$ **then**

if $\mathcal{P}[i] < 0$ **then**

$W[i] \leftarrow W[i][1 - \gamma_w(1 + \Gamma x)u \text{ random}]$

end if

$Y[i] \leftarrow \max\{0, Y[i] - \eta_-(D[i] - Y[i])\}$

if $p[i] < \bar{p}$ **then** $p[i] \leftarrow p[i](1 - \gamma_p \text{ random})$

end if

end if

else if $\mathcal{E}[i] \leq -\Theta W[i]Y[i]$ **then**

$a[i] \leftarrow 0$

deficit $\leftarrow \text{deficit} - \mathcal{E}[i]$

$\mathcal{B} \leftarrow i$

end if

end if

end for

Algorithm 2 Mark0 (continued)

```

 $u \leftarrow 1 - \frac{1}{N_F} \sum_i Y[i]$  ▷ Update  $u$  and  $\bar{p}$ 
 $\bar{p} \leftarrow \frac{\sum_i p[i] Y[i]}{\sum_i Y[i]}$ 

 $\rho^- = \rho_0 + (1 - f) \text{deficit} / \mathcal{E}^-$  ▷ Central Bank set interest rates
 $\rho^+ = \frac{\rho^- \mathcal{E}^- - \text{deficit}}{S + \mathcal{E}^+}$  ▷ Households decide the demand

 $S \leftarrow (1 + \rho^+) S$ 
 $c \leftarrow c_0 [1 + \alpha_c (\tilde{\pi} - \tilde{\rho}^+) / \gamma_\pi]$ 
 $C_B \leftarrow c (\max\{S, 0\} + \sum_i W[i] Y[i])$ 

for ( $i \leftarrow 0; i < N_F; i \leftarrow i + 1$ ) do
     $D[i] \leftarrow \frac{B a[i] \exp(-\beta p[i] / \bar{p})}{p[i] \sum_i a[i] \exp(-\beta p[i] / \bar{p})}$  ▷ Inactive firms have no demand
end for ▷ Accounting

 $\mathcal{E}^+ = 0$ 
for ( $i \leftarrow 0; i < N_F; i \leftarrow i + 1$ ) do
    if  $a[i] == 1$  then
         $\mathcal{P}[i] \leftarrow p[i] \min\{Y[i], D[i]\} - W[i] Y[i] + \rho^+ \max\{\mathcal{E}[i], 0\} + \rho^- \min\{\mathcal{E}[i], 0\}$ 
         $S \leftarrow S - \mathcal{P}[i]$ 
         $\mathcal{E}[i] \leftarrow \mathcal{E}[i] + \mathcal{P}[i]$ 
        if  $\mathcal{P}[i] > 0 \ \&\& \ \mathcal{E}[i] > 0$  then ▷ Pay dividends
             $S \leftarrow S + \delta \mathcal{E}[i]$ 
             $\mathcal{E}[i] \leftarrow \mathcal{E}[i] - \delta \mathcal{E}[i]$ 
        end if
         $\mathcal{E}^+ \leftarrow \mathcal{E}^+ + \max\{\mathcal{E}[i], 0\}$ 
    end if
end for ▷ Revivals

deficit = 0
for ( $i \in \mathcal{B}$ ) do
    if random <  $\varphi$  then
         $Y[i] \leftarrow u$  random
         $a[i] \leftarrow 1$ 
         $P[i] \leftarrow \bar{p}$ 
         $W[i] \leftarrow \bar{w}$ 
         $\mathcal{E}[i] \leftarrow W[i] Y[i]$ 
        deficit  $\leftarrow$  deficit +  $\mathcal{E}[i]$ 
         $\mathcal{E}^+ \leftarrow \mathcal{E}^+ + \mathcal{E}[i]$ 
         $\mathcal{B} \rightarrow i$ 
    end if
end for
for ( $i \notin \mathcal{B}$ ) do
    if  $\mathcal{E}[i] > 0$  then
         $\mathcal{E}[i] \leftarrow \mathcal{E}[i] - \text{deficit} \mathcal{E}[i] / \mathcal{E}^+$ 
    end if
end for
end for

```

-
- [1] S. Gualdi, M. Tarzia, F. Zamponi, J.-P. Bouchaud, *Journal of Economic Dynamics and Control* 50, 29-61 (2015).
 - [2] The Mark I family of models was elaborated in a series of papers and books, in particular: E. Gaffeo, D. Delli Gatti, S. Desiderio, and M. Gallegati, *Adaptive Microfoundations for Emergent Macroeconomics*, *Eastern Economic Journal*, 34: 441-463 (2008); D. Delli Gatti, E. Gaffeo, M. Gallegati, G. Giulioni, and A. Palestrini, *Emergent Macroeconomics: An Agent-Based Approach to Business Fluctuations*, Springer: Berlin, 2008; D. Delli Gatti, S. Desiderio, E. Gaffeo, P. Cirillo, M. Gallegati, *Macroeconomics from the Bottom-up*, Springer: Berlin (2011).
 - [3] see e.g. J. Galí, *Monetary Policy, Inflation and the Business Cycle*, Princeton University Press (2008).
 - [4] for a comparative review of DSGE and macroeconomic ABMs, see: G. Fagiolo, A. Roventini, *Macroeconomic Policy in DSGE and Agent-Based Models*, Working Paper (2012).
 - [5] O. Blanchard, *Where Danger Lurks*, *Finance & Development*, September 2014, Vol. 51, No. 3.
 - [6] C. Deissenberg, S. van der Hoog, H. Dawid, *Eurace: A massively parallel agent-based model of the european economy*, *Applied Mathematics and Computation*, 204: 541-552 (2008); H. Dawid, S. Gemkow, P. Harting, S. van der Hoog, M. Neugarty; *The Eurace@Unibi Model: An Agent-Based Macroeconomic Model for Economic Policy Analysis*, Working paper, Bielefeld University. 2011.
 - [7] G. Dosi, G. Fagiolo, A. Roventini, *An evolutionary model of endogenous business cycles*. *Computational Economics*, 27: 3-24 (2005); G. Dosi, G. Fagiolo, and A. Roventini, *Schumpeter meeting Keynes: A policyfriendly model of endogenous growth and business cycles*, *Journal of Economic Dynamics and Control*, 34, 1748-1767 (2010); and [4].
 - [8] A. Mandel, S. Furst, W. Lass, F. Meissner, C. Jaeger; *Lagom generiC: an agent-based model of growing economies*, ECF Working Paper 1 /2009.
 - [9] A. Kirman, *The Economic Crisis is a Crisis for Economic Theory*, *CESifo Economic Studies*, 56: 498-535 (2010).
 - [10] see e.g. C. Hommes, *Behavioral Rationality and Heterogeneous Expectations in Complex Economic Systems*, Cambridge University Press (2013) for a review on behavioral experiments, and [11] for experiments related to DSGE modelling.
 - [11] T. Assenza, P. Heemeijer, C. Hommes, D. Massaro, *Individual expectations and aggregate macro behavior*, Tinbergen Institute Discussion Paper 13-016/II
 - [12] for a recent review, see: J.-P. Bouchaud, *Crises and Collective Socio-Economic Phenomena: Simple Models and Challenges*, *J. Stat. Phys.* 151: 567-606 (2013), and refs. therein.
 - [13] G. Ehrhardt, M. Marsili, and F. Vega-Redondo, *Phenomenological models of socioeconomic network dynamics*, *Phys. Rev. E* 74, 036106 (2006); K. Anand, P. Gai, M. Marsili, *The rise and fall of trust networks*, *Progress in Artificial Economics. Lect. Notes Econ. Math. Syst.* 645: 77 (2010).
 - [14] P. Gai, A. Haldane, and S. Kapadia, *Complexity, concentration and contagion*, *Journal of Monetary Economics* 58, 453-470 (2011).
 - [15] J. Batista, J.-P. Bouchaud, D. Challet, *Sudden trust collapse in Networked societies*, arXiv:1409.8321.
 - [16] R. J. Caballero, *Macroeconomics after the Crisis: Time to Deal with the Pretense-of-Knowledge Syndrome*, *Journal of Economic Perspectives*, 24: 85-102 (2010).
 - [17] S. Gualdi, J.-P. Bouchaud, G. Cencetti, M. Tarzia and F. Zamponi, *"Endogenous crisis waves: a stochastic model with synchronized collective behavior"*, arXiv:1409.3296v1, *Phys. Rev. Lett.* 114, 088701 (2015)
 - [18] N. G. Mankiw. *Principles of macroeconomics*, Cengage Learning, 2014, see in particular Ch. 14.
 - [19] S.P. Kothari, J. Lewellen, J. B. Warner, *The behavior of aggregate corporate investment*, <http://ssrn.com/abstract=2511268>.
 - [20] in this spirit, see the very interesting paper of F. Patzelt and K. Pawelzik, *Criticality of Adaptive Control Dynamics*, *Phys. Rev. Lett.* 107: 238103 (2011).
 - [21] N. N. Taleb, *The Black Swan* (London: Random House, 2007).
 - [22] M. Buchanan, *This Economy does not compute*, *New York Times*, October 1, 2008. On this topic, see also [1, 9, 12, 23].
 - [23] D. Farmer, D. Foley, *The economy needs agent-based modelling*, *Nature* 460, 685-686 (2009).
 - [24] see e.g. S. P. Anderson, A. De Palma, J. F. Thisse, *Discrete Choice Theory of Product Differentiation*. MIT Press, New York (1992).