



THE AGA KHAN UNIVERSITY

eCommons@AKU

General Surgery, East Africa

Medical College, East Africa

January 2007

Biliary tract obstruction in chronic pancreatitis

Abdallah Abdulkarim

Aga Khan University, abdallah.abdulkarim@aku.edu

Jake E. J. Krige

University of Cape Town

Philippus C. Bornman

University of Cape Town

Follow this and additional works at: http://ecommons.aku.edu/eastafrica_fhs_mc_gen_surg



Part of the [Surgery Commons](#)

Recommended Citation

Abdulkarim, A., Krige, J., Bornman, P. (2007). Biliary tract obstruction in chronic pancreatitis. *HPB*, 9, 421-428.

Available at: http://ecommons.aku.edu/eastafrica_fhs_mc_gen_surg/3

REVIEW ARTICLE

Biliary tract obstruction in chronic pancreatitisABDUL A. ABDALLAH¹, JAKE E. J. KRIGE² & PHILIPPUS C. BORNMAN²¹*Department of Surgery, Aga Khan University Hospital, Nairobi, Kenya and* ²*Department of Surgery, University of Cape Town Health Sciences Faculty, and Surgical Gastroenterology Unit, Groote Schuur Hospital, Observatory 7925, Cape Town, South Africa***Abstract**

Bile duct strictures are a common complication in patients with advanced chronic pancreatitis and have a variable clinical presentation ranging from an incidental finding to overt jaundice and cholangitis. The diagnosis is mostly made during investigations for abdominal pain but jaundice may be the initial clinical presentation. The jaundice is typically transient but may be recurrent with a small risk of secondary biliary cirrhosis in longstanding cases. The management of a bile duct stricture is conservative in patients in whom it is an incidental finding as the risk of secondary biliary cirrhosis is negligible. Initial conservative treatment is advised in patients who present with jaundice as most will resolve once the acute on chronic attack has subsided. A surgical biliary drainage is indicated when there is persistent jaundice for more than one month or if complicated by secondary gallstones or cholangitis. The biliary drainage procedure of choice is a choledocho-jejunostomy which may be combined with a pancreaticojejunostomy in patients who have associated pain. Since many patients with chronic pancreatitis have an inflammatory mass in the head of the pancreas, a Frey procedure is indicated but a resection should be performed when there is concern about a malignancy. Temporary endoscopic stenting is reserved for cholangitis while an expandable metal stent may be indicated in patients with severe co-morbid disease.

Incidence

The incidence of common bile duct stricture (CBDS) in chronic pancreatitis (CP) varies widely depending on the precise definition, diagnostic vigor, and demographics of any given series. The wide variation in the reported incidence, which ranges from 3% to 46% [1–8] (Table I), occurs because not all patients with biliary obstruction in CP present with jaundice. The jaundice may frequently be transient [9], and in an appreciable number of patients the bile duct stricture is discovered incidentally [10–14].

Pathogenesis

The anatomical relationship of the common bile duct (CBD) with the head of the pancreas is an important factor influencing the nature of the stenosis in CP. In up to 85% of people, the CBD traverses the pancreatic head and is adjacent posteriorly in the remainder [15]. The intrapancreatic portion of the CBD varies in length from 1.5 to 6 cm, which accounts for the

variability of stricture lengths seen in clinical practice [16].

CBDS occurs as a consequence of recurrent acute inflammatory episodes which may ultimately result in a periductal fibrotic stricture [10]. This occurs more commonly in advanced CP, with the highest incidence in the calcific variant [9,17–21]. The development of a pseudocyst may also be a contributing factor, but is seldom the sole cause of a CBDS [22–24]. Resolution of the acute inflammatory process or a pseudocyst often results in relief of the jaundice, but a residual low-grade obstruction is common, as indicated by a persistently raised alkaline phosphatase (ALP) or a dilated CBD on ultrasonography. A pseudocyst, as the dominant cause of jaundice, is only implicated when this resolves with spontaneous resolution of the cyst or after cyst drainage [25].

Clinical presentation

The clinical course of a CBDS varies, and is characterized by exacerbations and remissions. Some

Table I. Incidence of bile duct obstruction in patients with chronic pancreatitis.

Author	Year	No. of patients	No. with obstruction	%
Yadegar et al. [1]	1980	651	21	3
Stabile et al. [2]	1987	910	40	4
Huizinga et al. [3]	1992	509	45	9
Petrozza & Dutta [4]	1985	151	15	10
Aranha et al. [5]	1984	1262	51	4
Afroudakis & Kaplowitz [6]	1981	300	24	8
Wisloff et al. [7]	1982	79	36	46
Sand & Nordback [8]	1995	77	18	23

patients with biliary obstruction may be asymptomatic and have only modestly deranged liver function tests. This "incidental" presentation occurs in up to 17% of patients [13]. Although pain is the predominant clinical feature in most patients [2,3,8,13,26], it is doubtful that a CBDS *per se* is a major contributing factor. Jaundice is present in 30% [10] to 50% [13] of patients, and may be transient, recurrent, or persistent [26]. Transient jaundice is typically seen during acute exacerbations and recedes with resolution of the inflammatory process. Other biochemical markers of biliary obstruction, such as ALP and GGT, are slower to return to normal levels or may persist. Recurrent jaundice occurs with repeated exacerbations and may become persistent when associated with severe fibrosis and calcification. Cholangitis occurs in 10% of patients [27,28] and varies from subclinical episodes to overt septicemia [12]. Life-threatening cholangitis is seldom the first indication of the diagnosis [12,29].

Although several studies have reported a significant risk of development of secondary biliary cirrhosis [1,2,6,30], other series have not confirmed this finding [5,31–33]. Frey et al. [28] found that the average incidence of biliary cirrhosis associated with CBDS was 7.3% (Table II) [1,2,5,6,9,14,30–34], and in four of the studies [5,31–33] in their collected series no patients had biliary cirrhosis.

Table II. Incidence of biliary cirrhosis in patients with common bile duct stenosis secondary to chronic pancreatitis (after Frey et al. [35]).

Author	Year	No. of patients	No. with biliary cirrhosis	No. with cholangitis
Warshaw et al. [30]	1976	6	3	3
Scott [9]	1977	11	1	4
Bradley & Salam [31]	1977	13	–	2
Yadegar et al. [1]	1980	21	2	3
Afroudakis & Kaplowitz [6]	1981	24	4	–
Creaghe et al. [34]	1983	10	2	1
DaCunha et al. [32]	1984	24	–	3
Aranha et al. [5]	1984	51	–	3
Sugerman et al. [33]	1986	16	–	1
Stabile et al. [2]	1987	40	6	6
Stahl et al. [14]	1988	38	3	1
Total		288	21 (7.3%)	27

Laboratory investigations

Elevation of the ALP is the most frequently encountered abnormal laboratory test [2] and a persistent increase greater than 2-fold for more than 1 month has been proposed as a specific marker of a CBDS [11], although ALP levels may exceed 1000 IU. Transient hyperbilirubinemia is typically seen in CP and is the result of edema of the pancreas during an acute exacerbation, but may become persistent when there is established cicatrization of the distal CBD in more severe forms of the disease [26,35].

Radiology

The demonstration of pancreatic calcification on a plain abdominal roentgenogram may be the first clue to the diagnosis. Ultrasonography will demonstrate extrahepatic bile duct obstruction in 80% of cases [36], but a CT scan (Figure 1) is usually required to provide accurate delineation of the parenchymal and

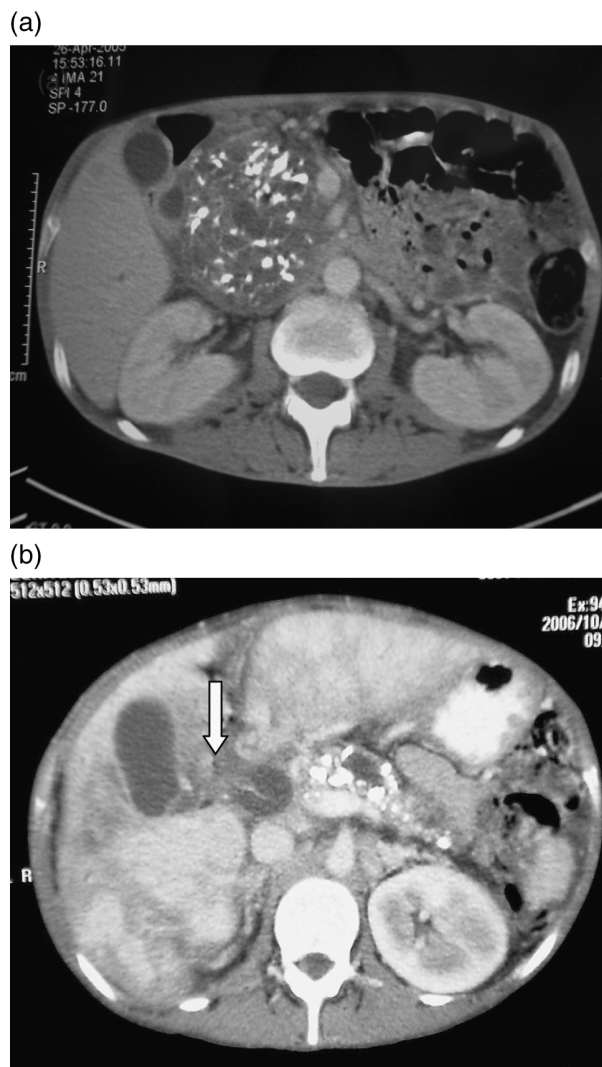


Figure 1. CT scan showing chronic calcific pancreatitis. 1b. CT scan showing pancreatic calcification and common bile duct dilatation (arrow).

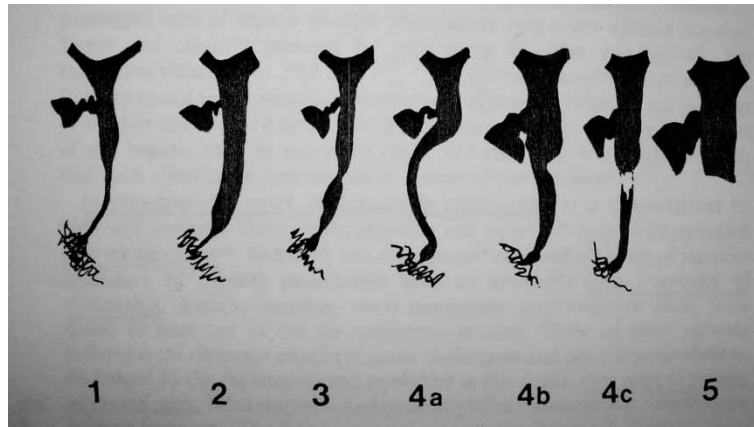


Figure 2. Cholangiographic appearance of bile duct strictures (as identified by Caroli & Nora) [38]. Type I: Long retropancreatic stenosis. Type II: Dilatation of the main bile duct, stricture of the sphincter of oddi. Type III: Hourglass stricture. Type IV: Symptomatic of either a cyst (a), or a cancer (b and c). Type V: Cancer of the pancreas.

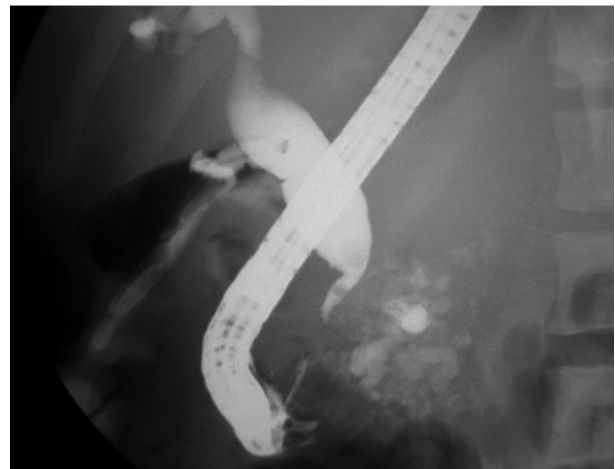
ductal morphological changes of the pancreas, including the presence of a pseudocyst [2,36]. Typically, a smooth and tapering distal CBDS is seen on biliary imaging [7,10–12,30,35,37]. Occasionally, other CBDS shapes, such as the “bent knee” and “hourglass” configurations have been described [7,10,12]. In an attempt to differentiate and characterize CBDS secondary to CP from those due to other causes, Caroli & Nora [38] classified the cholangiographic appearance of bile duct strictures into five types (Figure 2). Type I and type III are most commonly seen in CP [39,40]. In 100 CP patients, Sarles & Sahel [10] showed a 60% incidence of type I stricture; a similar observation was made by Petrozza & Dutta [4]. In the latter series of 15 cholangiograms, the length of the strictured segment varied from 16 to 57 mm (mean 40.7 mm), while the maximal diameter of the dilated portion of the CBD ranged from 13 to 28 mm (mean 18.9 mm). Snapes et al. noted a CBD diameter ranging from 16 to 25 mm [37], and postulated that even partial stenosis of the CBD may elevate the biliary pressures sufficiently to dilate the proximal biliary system over time. Petrozza & Dutta [4] showed that a particular radiographic configuration of the stricture was not helpful in determining the nature of the underlying process, and therefore predict its natural history. As diagnostic investigations, ERCP (Figure 3a) and PTC have been superseded to a large extent by multislice CT scan and MRI/MRCP, which, in most instances, will provide adequate imaging of the biliary and pancreatic anatomy [41,42] (Figure 3b).

Cholestatic jaundice – carcinoma or pancreatitis?

The differentiation from pancreatic cancer can be difficult, particularly in patients with pre-existing CP. Patients with alcohol-induced CP may be at higher risk of pancreatic malignancy, but the evidence is

inconclusive. Lowenfels et al. [43] reported a 16-fold increase in risk, while Karlson et al. [44] failed to show any association in a Swedish Cohort study. The

(a)



(b)

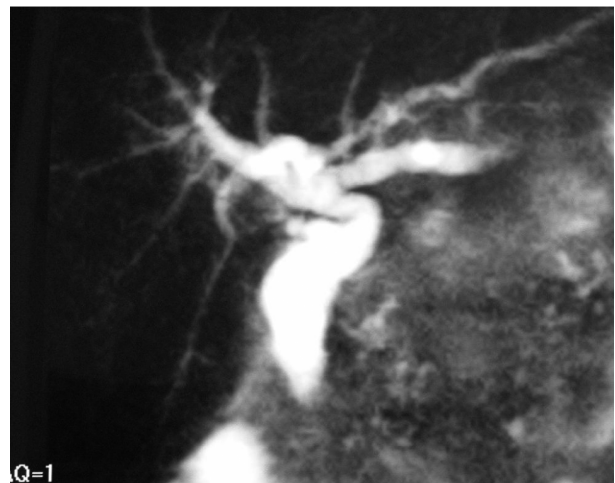


Figure 3. ERC demonstrating a smooth tapering biliary stricture in a patient with chronic calcific pancreatitis. 3b. MRCP showing dilated extrahepatic bile duct with smooth tapering stricture.

entity of focal or segmental pancreatitis, which can be associated with groove pancreatitis, may also mimic carcinoma of the pancreas [45].

Warpnick et al. [46] devised a point score system to differentiate CP from carcinoma which showed that older patients with a higher and progressive rise in the serum bilirubin were more likely to have a pancreatic malignancy. A similar observation was made by Frey et al. [28].

While CT scan provides good visualization of the pancreas, differentiation between a carcinoma and CP may be difficult in the absence of other findings, such as metastases [47]. Cholangiographic features may be unreliable because of a wide variability of the cholangiographic appearances of the stricture [14], but complete obstruction is rare in CP. ERCP is still more accurate than MRCP in delineating main pancreatic and side duct morphology [11], which may assist in the differential diagnosis.

CA 19-9 is useful in establishing the diagnosis of pancreatic cancer [48], with a sensitivity of 80% to 85% and specificity of 85% to 90% [49,50]. Markedly elevated levels greater than 1000 U/ml increase the specificity for pancreatic cancer to 99% [49]. However, in patients with obstructive jaundice, elevated biliary pressures result in an exaggerated leakage of CA 19-9 into serum [51], with the resultant high levels seen in the absence of malignancy. Thus, CA 19-9 may be elevated in CP with biliary obstruction, although levels seldom exceed 100–120 U/ml [51]. In 20 patients with CP, Gentiloni et al. [52] reported a median CA 19-9 level of 30.4 U/ml with a range of 3 to 6123 U/ml. Other authors [53,54] have also reported levels in excess of 2000 U/ml. Caution should thus be exercised in the interpretation of CA 19-9 as a marker of differentiating carcinoma from pancreatitis, especially in patients with biliary obstruction [54].

Other tumor markers, such as CA 494 [55], pancreatic juice 90K [52], and pancreatic ductal cell telomerase activity [56] have been investigated to distinguish benign from malignant pancreatic disease, but their applicability has so far been limited. Del Maschio and co-workers [47] prospectively performed CA 19-9 assays, CT scan, ultrasound, and CT-guided fine needle aspiration biopsy of the pancreas in 81 consecutive patients with suspected CP or pancreatic neoplasm. The CT-guided aspiration yielded superior results with an accuracy of 94%.

Management

Management decisions are dictated largely by the clinical presentation and the morphological changes in the pancreas. Clinical factors to consider include the presence and severity of associated pain, the occurrence and duration of jaundice, and concern about an underlying malignancy. Surgical strategy will depend on whether there is an inflammatory mass in

the head of the pancreas and the degree of bile duct and pancreatic duct dilatation.

The incidental finding of a CBDS with varying degrees of bile duct dilatation on imaging with or without a raised AP is well documented [10–12]. This particular group of patients may have either a normal or more typically a disproportionately elevated serum ALP level. The perceived risk of secondary biliary cirrhosis, especially if the ALP is markedly elevated, has prompted some authors to advocate prophylactic biliary drainage in these patients [11,12]. While Frey et al. [28] reported an overall incidence of 7.3% for secondary biliary cirrhosis, other authors have not noted this complication [5,13,31–33]. When adopting a conservative approach for asymptomatic or minimally symptomatic patients during a follow-up period of up to 4 years, Kalvaria et al. [13] found that no patients developed secondary biliary cirrhosis. A similar strategy and outcome has been reported by other authors [7,10,14,16,26]. These patients should therefore be treated conservatively and monitored with 6-monthly liver function tests and biliary ultrasound. As there is no reliable means of predicting progression to biliary cirrhosis, Yadegar and co-workers [1] have recommended serial liver biopsies at 6 and 12 months. However, the low risk of developing secondary cirrhosis in these patients does not justify routine or repeated liver biopsies, which may be difficult to interpret histologically. Similarly, the placement of stents is strongly discouraged, as this may cause secondary infections with clogging of the stents.

A CBDS is a common finding during investigations for pain in CP. Many authors concur that the pain is more likely to be pancreatic in origin [1,2,5,33,34] unless there are associated bile duct stones [13]. Although relief of pain after biliary diversion has been reported [30], a conservative approach should be adopted in the absence of associated jaundice [13]. In jaundiced patients, management will be determined whether jaundice is transient, recurrent, or persistent [32]. A conservative approach is warranted for transient jaundice, which is frequently self-limiting due to resolution of edema or a pseudocyst in the head [1,7,10–12,14,26,31,57]. Spontaneous resolution of jaundice occurs within 1 month in 20–50% of patients [4,7,9,11,31]. Early biliary drainage is indicated in the presence of choledocholithiasis and cholangitis.

Biliary decompression is recommended when jaundice persists for more than 1 month. The type of biliary drainage depends on the patient's fitness and willingness to undergo surgery, the morphological changes in the pancreatic head, the biliary and pancreatic ductal systems, and the suspicion of malignancy. Options for biliary drainage include stenting and operative bypass.

Endoscopic biliary stenting has a high technical success rate and provides short-term resolution of

Table III. Sustained clinical benefit of endoscopic plastic biliary stent drainage in biliary stenosis in chronic pancreatitis.

Author	Year	No. of patients	Initial technical success (%)	Patients (%) with improvement of cholestasis*	Mean follow-up months*
Huibregtse et al. [60]*	1984	52	–	33	32
Deviere et al. [61]	1990	25	100	12	14
Barthet et al. [62]	1994	19	100	10	12
Smits et al. [63]	1996	58	100	28	46
Born et al. [64]	1998	18	100	17	23
Kiehne et al. [65]	2000	14	100	16	52
Vitale et al. [66]	2000	25	100	80	32
Farnbacher et al. [58]	2003	31	94	32	28
Kahl et al. [59]	2003	61	100	26	40

* After stent extraction.

jaundice [58,59], but stent malfunctioning with clogging and septic complications is common (Table III) [58–66]. Farnbacher et al. [58] analyzed 31 patients following endoscopic plastic stent placement over a mean duration of 10 months and found that although the jaundice improved in all patients after insertion of the stent, complete regression of stenosis occurred in only 13%. Similar results were reported by Kahl et al. [59], who in addition found that their patients with pancreatic calcification did poorly with endoscopic biliary stenting. This finding was confirmed by Draganov et al. [67]. Deviere et al. [61] reported migration of the stent in 10 patients (40%) and blockage in 8 of 25 patients who were treated with a biliary endoprosthesis. Clogging of the stent occurred after a mean time of 6.5 months, and dislodgement 11 weeks after placement. Catalano and others [68], however, showed better long-term results with placement of multiple simultaneous biliary stents (4–5 stents per patient), even in the presence of calcification. They concluded that endoscopic intervention with multiple stents provided good long-term results and may obviate the need for surgical procedures. Nevertheless, close surveillance is important with judicious replacement of stents either at planned intervals or with early evidence of malfunctioning.

Although the role of self-expandable metal mesh stents for malignant biliary obstruction is well established [69–72], its use in benign strictures, including CP, is less clear and controversial. Deviere et al. [73] prospectively followed 20 patients with self-expanding metal stents for a mean period of 33 months. The stents remained patent and functional in all but two patients. They concluded that self-expanding metal stents could become an effective alternative to surgical biliary diversion. However, other smaller studies [74–77] have produced variable results, few of which could confirm the encouraging results of Deviere [73]. Currently, stenting is at best a temporizing procedure, particularly for cholangitis. As a definitive treatment, stenting should be reserved for patients with serious co-morbid disease or those unwilling to undergo

surgery. However, indications for stenting may expand with the emergence of removable expandable [78,79] and bio-absorbable stents [80–82].

In a major review, Frey et al. [28] listed seven indications for surgical intervention for a CBDS in CP (Table IV). The authors are in full agreement with these proposed indications, except for the group of patients with a persistently raised ALP 3 times normal for more than 1 months. The choice of surgical procedure depends on the clinical presentation (associated pain or suspicion of malignancy), the presence of an inflammatory mass in the head, and main pancreatic duct anatomy. Careful radiological imaging is required to plan surgical strategy [13,28]. In the absence of pain, either a choledochoduodenostomy or a Roux-en-Y choledochojejunostomy provides effective biliary drainage; these are the surgical procedures of choice [5,13,16,26–28,31,83]. While cholecystojejunostomy is easier to construct, it is a poor option, as the long-term failure rate is up to 23% [27] and compares unfavourably with choledochoduodenostomy and Roux-en-Y choledochojejunostomy, which have failure rates of 2.5% and 2.1%, respectively. While choledochoduodenostomy is a simpler procedure [1–3,5,16,26,31], the reported higher incidence of “sump syndrome” [3,84] favours Roux-en-Y choledochojejunostomy, particularly when an additional pancreatic duct or pseudocyst drainage is required.

In the presence of jaundice and an inflammatory mass, a modified Frey [85] operation is preferred.

Table IV. Indications for biliary drainage (Frey et al. [28])

1. Symptomatic cholangitis or infected bile.
2. Biliary cirrhosis (biopsy proven).
3. CBD stones in association with common bile duct stricture.
4. Inability to rule out cancer of the pancreas.
5. Progression of the common bile duct stricture based on radiological assessment of increased dilatation of the common and intrahepatic bile ducts.
6. Persistent jaundice for over a month.
7. Persistently elevated alkaline phosphatase ($>3 \times$ normal levels >1 month).

The coring out of the pancreatic head may decompress the intrapancreatic portion of the CBD [86], but if there is any doubt, and in particular when the bile duct is grossly dilated, it is advisable to add a side-to-side Roux-en-Y choledochojejunostomy. An alternative to the Frey operation is the Beger duodenal preserving resection of the head [87], but if there is concern about malignancy it is strongly recommended to proceed to standard or pylorus preserving pancreaticoduodenectomy, which will avoid the risk of tumor seeding.

Conclusion

CBDS associated with CP usually indicates advanced disease and is mostly found with chronic calcific pancreatitis. The natural history depends on the severity of the fibrosis and calcification and the frequency of the superimposed acute inflammatory

exacerbations. The clinical presentation varies from an incidental discovery to persistent jaundice and, more rarely, overt cholangitis. Minimally symptomatic patients should be treated conservatively with careful monitoring of liver functions at 6-month intervals (Figure 4). A conservative approach is also recommended for patients who present with jaundice, since this may resolve after resolution of an acute inflammatory episode. Biliary intervention is indicated when there is persistent jaundice for longer than a month or when frequent relapses occur, thus avoiding the risk of secondary biliary cirrhosis and cholangitis.

The preferred surgical biliary drainage is a choledochojejunostomy and in patients who also have pain and an inflammatory mass in the head, the authors prefer the addition of a Frey procedure. When there is concern about an underlying malignancy, the preferred operation is a pancreaticoduodenectomy.

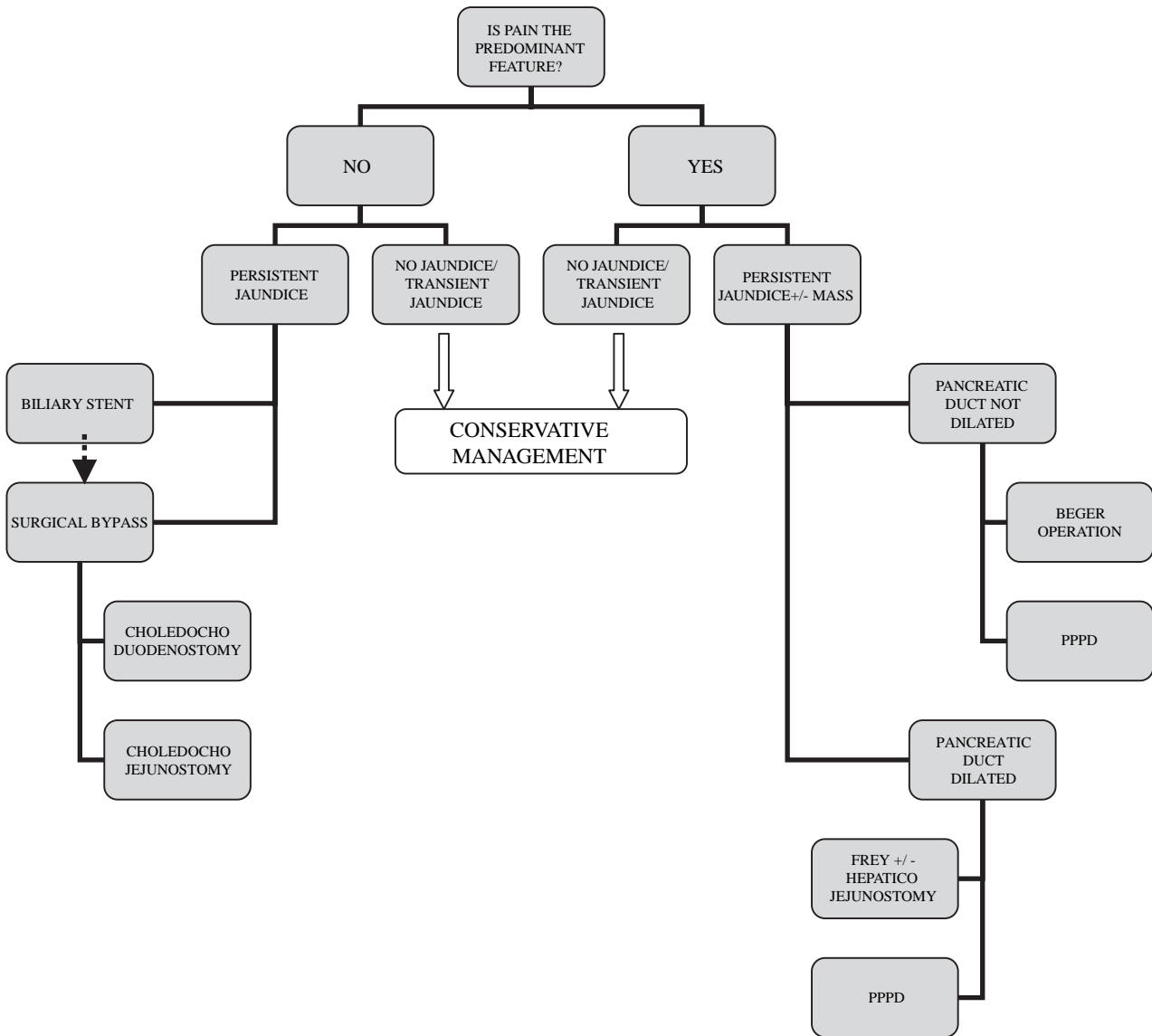


Figure 4. Management algorithm: biliary obstruction in chronic pancreatitis.

Biliary stenting should be restricted to patients who present with overt cholangitis or patients who are unfit for surgical intervention. In future, the role of stenting as definitive treatment may be extended with the development of removable expandable stents.

References

- [1] Yadegar J, Williams R, Passaro E, et al. Common duct stricture from chronic pancreatitis. *Arch Surg* 1980;115:582-6.
- [2] Stabile B, Wilson S, Passaro E. Stricture of the common bile duct from chronic pancreatitis. *Surg Gynaecol Obstet* 1987;165:121-6.
- [3] Huizinga W, Thompson SR, et al. Chronic pancreatitis with biliary obstruction. *Ann Roy Coll Surg Engl* 1992;74:119-25.
- [4] Petrozza J, Dutta S. The variable appearance of distal common bile duct stenosis in chronic pancreatitis. *J Clin Gastroenterol* 1985;7:447-50.
- [5] Aranha G, Prinz R, Freeark R, et al. The spectrum of biliary tract obstruction from chronic pancreatitis. *Arch Surg* 1984;119:595-600.
- [6] Afroudakis A, Kaplowitz N. Liver histopathology in chronic bile duct stenosis due to chronic alcohol pancreatitis. *Hepatology* 1981;1:65-72.
- [7] Wisloff F, Jakobsen J, Osnes M. Stenosis of the common bile duct in chronic pancreatitis. *Br J Surg* 1982;69:52-4.
- [8] Sand J, Nordbank I. Management of cholestasis in patients with pancreatitis: evaluation of a treatment protocol. *Eur J Surg* 1995;161:587-92.
- [9] Scott J, Summerfield JA, Elias E, et al. Chronic pancreatitis: a cause of cholestasis. *Gut* 1977;18:196-201.
- [10] Sarles H, Sahel J. Cholestasis and lesions of the biliary tract in chronic pancreatitis. *Gut* 1978;19:851-7.
- [11] Littenberg G, Afroudakis A, Kaplowitz N. Common bile duct stenosis from chronic pancreatitis: a clinical and pathologic spectrum. *Medicine* 1979;58:385-412.
- [12] Gregg J, Carr-Locke D, Gallagher M. Importance of common bile duct strictures associated with chronic pancreatitis. *Am J Surg* 1981;141:199-203.
- [13] Kalvaria I, Bornman P, Marks I, et al. The spectrum and natural history of common bile duct stenosis in chronic alcohol induced pancreatitis. *Ann Surg* 1989;210:608-13.
- [14] Stahl T, Allen M, Ansell H, et al. Partial biliary obstruction caused by chronic pancreatitis. *Ann Surg* 1988;207:26-32.
- [15] Hollinghead W. The lower part of the common bile duct, a review. *Surg Clin North Am* 1957;37:939-52.
- [16] Eckhauser F, Knol J, Strodel W, et al. Common bile duct strictures associated with chronic pancreatitis. *Am Surg* 1983;49:350-8.
- [17] Juttner H, Renner I, Richman R, et al. Evaluation of obstructive jaundice in chronic pancreatitis. *Gastroenterology* 1976;70:A-40/898.
- [18] Kasugai T, Kuno N, Kizu M. Endoscopic pancreaticholangiography with special reference to manometric method. *Med J Aust* 1973;2:717-25.
- [19] Kasugai T, Kuno N, Kizu M. Endoscopic pancreaticholangiography. *Gastroenterology* 1972;63:217-34.
- [20] Smanio T. Varying relations of the common bile duct with the posterior head of the pancreas. *J Int Coll Surg* 1954;22:150-73.
- [21] Wapnick S, Purow E, Grosberg S, et al. Obstructive jaundice due to pancreatitis. *Gastroenterology* 1977;72:A-122.
- [22] Gadacz T, Lillemore K, Zinner M, et al. Common bile duct complications of pancreatitis evaluation and treatment. *Surgery* 1988;93:235-42.
- [23] Singh S, Reber H. The pathology of chronic pancreatitis. *World J Surg* 1990;14:2-10.
- [24] Warshaw A, Rattner D. Facts and fallacies of common bile duct obstruction by pancreatic pseudocysts. *Ann Surg* 1980;192:33-7.
- [25] Sidel V, Wilson R, Shipp J. Pseudocyst formation in chronic pancreatitis: a cause of obstructive jaundice. *Arch Surg* 1958;77:933-7.
- [26] Segal I, Lawson H, Rabinowitz B, et al. Chronic pancreatitis and the hepatobiliary system. *Am J Gastroenterol* 1982;77:867-74.
- [27] Vijungco J, Prinz R. Management of biliary and duodenal complications of chronic pancreatitis. *World J Surg* 2003;27:1258-70.
- [28] Frey C, Suzuki M, Isaji S. Treatment of chronic pancreatitis by obstruction of the bile duct or duodenum. *World J Surg* 1990;14:59-69.
- [29] Lillemore K, Pitt H, Cameron J. Current management of benign bile duct strictures. *Adv Surg* 1992;25:119-74.
- [30] Warshaw A, Schapiro R, Ferruchi J, et al. Persistent obstructive jaundice, cholangitis, and biliary cirrhosis due to common bile duct stenosis in chronic pancreatitis. *Gastroenterology* 1976;70:562-7.
- [31] Bradley E, Salam A. Hyperbilirubinaemia in inflammatory pancreatic disease: natural history and management. *Ann Surg* 1978;188:626-9.
- [32] Da Cunha JE, Bacchella T, Mott CG, et al. Surgical treatment of biliary complications from chronic pancreatitis. *Int Surg* 1984;69:149-54.
- [33] Sugerma H, Barnhart G, Newsome H. Selective drainage for pancreatic, biliary, and duodenal obstruction secondary to chronic fibrosing pancreatitis. *Ann Surg* 1986;203:558-67.
- [34] Creaghe S, Roseman D, Saik R. Biliary obstruction in chronic pancreatitis: indications for surgical intervention. *Am Surg* 1981;47:243-6.
- [35] Gremillion D, Johnson L, Cammere R, et al. Biliary obstruction: a complication of chronic pancreatitis diagnosed by endoscopic retrograde cholangiopancreatography. *Dig Dis Sci* 1979;24:145-9.
- [36] Amouyal P, Amouyal G, Mompoin D, et al. Endosonography: promising method for the diagnosis of extrahepatic cholestasis. *Lancet* 1982;2:1195-7.
- [37] Snape W, Long W, Trotman B, et al. Marked alkaline phosphatase elevation with partial common bile duct obstruction due to calcific pancreatitis. *Gastroenterology* 1976;70:562-7.
- [38] Caroli J, Nora J. L'hépatocholédoque dans les pancreatitis. Ille Congres Europeen des Societes Nationales de Gastroenterologie. *Bologne* 1952.
- [39] Sachs M, Partington P. Cholangiographic diagnosis of pancreatitis. *Am J Roentgenol* 1956;76:32-8.
- [40] Sarles H, Sarles J, Guien C. Etude des voies biliaires et pancreatiques au cours des pancreatitis chroniques. *Archives des Maladies de l'Appareil Digestif et des Maladies de la Nutrition* 1958;47:664-83.
- [41] Lomanto D, Pavone P, Laghi A, et al. Magnetic resonance cholangiopancreatography in the diagnosis of biliopancreatic disease. *Am J Surg* 1997;174:33-8.
- [42] Hintze R, Adler A, Veltzke W, et al. Clinical significance of MRCP compared to ERCP. *Endoscopy* 1997;29:182-7.
- [43] Lowenfels A, Maisonneuve P, Cavallini G, et al. Pancreatitis and the risk of pancreatic cancer. *N Engl J Med* 1993;328:1433-7.
- [44] Karlson B, Ekbom A, Josselson S, et al. The risk of pancreatic cancer following pancreatitis: an association due to confounding? *Gastroenterology* 1997;587-92.
- [45] Stolte M, Weib W, Vokholz H, et al. A special form of segmental pancreatitis: "groove" pancreatitis. *Hepatogastroenterology* 1982;29:198-208.

- [46] Warpnick S, Hadas N, Purow E, et al. Mass in the head of the pancreas in cholestatic jaundice. Carcinoma or pancreatitis? *Ann Surg* 1979;190:587-91.
- [47] Del Maschio A, Vanzulli A, Sironi S, et al. Pancreatic cancer versus chronic pancreatitis: diagnosis with CA19-9 assessment, US, CT, and CT-guided fine-needle biopsy. *Radiology* 1991;178:95-9.
- [48] Malesci A, Tommasini M, Bonato C, et al. Determination of CA 19-9 antigen in serum and pancreatic juice for differential diagnosis of pancreatic adenocarcinoma from chronic pancreatitis. *Gastroenterology* 1987;92:61-7.
- [49] Steinberg W. The clinical utility of the CA 19-9 tumor associated antigen. *Am J Gastroenterol* 1990;84:350-5.
- [50] Paganuzzi M, Onetto M, Barone D, et al. CA 19-9 and CA 50 in benign and malignant pancreatic and biliary diseases. *Cancer* 1988;61:2100-8.
- [51] Minghini A, Weireter L, Perry R. Specificity of elevated CA 19-9 in chronic pancreatitis. *Surgery* 1998;124:103-5.
- [52] Gentiloni N, Caradonna P, Costamagna P, et al. Pancreatic juice 90K and serum CA 19-9 combined determination can discriminate between pancreatic cancer and chronic pancreatitis. *Am J Gastroenterol* 1995;90:1069-72.
- [53] Yoshida E, Scudamore C, Erb S, et al. Markedly elevated CA 19-9 levels in a case of chronic pancreatitis. *Can J Surg* 1995;38:83-6.
- [54] Pearce S, Thornes H, Carr T, et al. Diagnostic pitfall: interpretation of CA 19-9 in the presence of hepatic dysfunction. *Gut* 1994;35:707-8.
- [55] Freiss H, Buchler M, Auerbach B, et al. CA 494: a new tumor marker for the diagnosis of pancreatic cancer. *Int J Cancer* 1993;53:759-63.
- [56] Hiyama E, Kodama T, Shinbara K, et al. Telomerase activity distinguishes benign from malignant tumors in pancreas (Abstract). *Am Assoc Cancer Res Proc* 1997;38:637.
- [57] McCollum W, Jordan P. Obstructive jaundice in patients with pancreatitis without associated biliary tract disease. *Ann Surg* 1975;182:116-20.
- [58] Farnbacher M, Rabenstein T, Ell C, et al. Is endoscopic drainage of common bile duct stenosis in chronic pancreatitis up-to-date? *Am J Gastroenterol* 2000;95:1466-71.
- [59] Kahl S, Zimmermann MD, Genz I, et al. Risk factors for failure of endoscopic stenting of biliary strictures in chronic pancreatitis: a prospective follow-up study. *Am J Gastroenterol* 2003;98:2448-53.
- [60] Huijbregtse K, Tytgat G. Endoscopic placement of biliary prosthesis. In Salmon PR, editor. *Gastrointestinal endoscopy. Advances in diagnosis and therapy*. London: Chapman and Hall; 1984. p. 219-31.
- [61] Deviere J, Deviere S, Baize M, et al. Endoscopic biliary drainage in chronic pancreatitis. *Gastrointest Endosc* 1990;36:96-100.
- [62] Barthet M, Bernard J, Duval J, et al. Biliary stenting in benign biliary stenosis complicating chronic calcifying pancreatitis. *Endoscopy* 1994;26:569-72.
- [63] Smits M, Rauws E, van Gulik T, et al. Long-term results of endoscopic stenting and surgical drainage for biliary stricture due to chronic pancreatitis. *Br J Surg* 1996;83:764-8.
- [64] Born P, Rosch T, Bruhl K, et al. Long-term results of endoscopic treatment of biliary duct obstruction due to pancreatic disease. *Hepato-Gastroenterol* 1998;45:833-9.
- [65] Kiehne K, Folsch U, Nitsche R. High complication rate of bile duct stents in patients with chronic alcohol pancreatitis due to noncompliance. *Endoscopy* 2000;32:377-80.
- [66] Vitale G, Reed D, Nguyen C, et al. Endoscopic treatment of distal bile duct stricture from chronic pancreatitis. *Surg Endosc* 2000;14:227-31.
- [67] Draganov P, Hoffman B, Marsh W, et al. Long-term outcome in patients with benign biliary strictures treated endoscopically with multiple stents. *Gastrointest Endosc* 2002;55:680-6.
- [68] Catalano M, Linder J, George S, et al. Treatment of symptomatic common bile duct stenosis secondary to chronic pancreatitis: comparison of single vs. multiple simultaneous stents. *Gastrointest Endosc* 2004;60:945-52.
- [69] Gillams A, Dick R, Dooley J, et al. Self-expandable stainless steel braided endoprosthesis for biliary strictures. *Radiology* 1990;174:137-40.
- [70] Neuhaus H, Hagenmuller F, Griebel M, et al. Self-expanding metal stents versus conventional plastic endoprosthesis for malignant biliary obstruction (Abstract). *Gastrointest Endosc* 1991;37:253.
- [71] Cremer M, Deviere J, Sugai B, et al. Expandable biliary metal stent. For malignancies: endoscopic insertion and diathermic cleaning for tumor ingrowth. *Gastrointest Endosc* 1990;36:451-7.
- [72] Huijbregtse K, Cheng J, Coene P, Tytgat G. Endoscopic placement of expandable metal stents for biliary stricture. A preliminary report on experience with 33 patients. *Endoscopy* 1989;21:280-5.
- [73] Deviere J, Cremer M, Baize M, et al. Management of common bile duct stricture caused by chronic pancreatitis with metal mesh self expandable stents. *Gut* 1994;35:122-6.
- [74] Kahl S, Zimmermann S, Glasbrenner B, et al. Treatment of benign biliary strictures in chronic pancreatitis by self-expandable metal stents. *Dig Dis* 2002;20:199-203.
- [75] Eickhoff A, Jakobs R, Leonhardt A, et al. Self-expandable metal mesh stents for common bile duct stenosis in chronic pancreatitis: retrospective evaluation of long-term follow-up and clinical outcome pilot study. *Z Gastroenterol* 2003;41:649-54.
- [76] French J, Charnley R. Expandable metal stents in chronic pancreatitis. *HPB* 2003;5:58-61.
- [77] Cantu P, Hookey L, Morales A, et al. The treatment of patients with symptomatic common bile duct stenosis secondary to chronic pancreatitis using partially covered metal stents: a pilot study. *Endoscopy* 2005;37:735-9.
- [78] Kahaleh M, Tokar J, Le T, Yeaton P. Removal of self expandable metallic wall stents. *Gastrointest Endosc* 2004;60:640-4.
- [79] Ahmed A, Keffe E, Imperial J. A novel technique for endoscopic removal of expandable biliary Wallstent. *Gastrointest Endosc* 1999;50:279-81.
- [80] Matlock J, Freeman ML. Endoscopic therapy of benign biliary strictures. *Rev Gastroenterol Disord* 2005;5:206-14.
- [81] Ginsberg G, Cape C, Shah J, Matin T, Carty A, Habecker P, et al. In vivo evaluation of a new bioabsorbable self expanding biliary stent. *Gastrointest Endosc* 2003;58:777-84.
- [82] Freeman ML. Bioabsorbable stents for gastrointestinal endoscopy. *Tech Gastrointest Endosc* 2001;3:120-5.
- [83] Petrosza J, Dutta S, Latham P, et al. Prevalence and natural history of distal common bile duct stenosis in alcoholic pancreatitis. *Dig Dis Sci* 1984;29:890-5.
- [84] Weed T, Blalock J. "Sump syndrome" after choledochoduodenostomy. *South Med J* 1982;75:370-2.
- [85] Frey C, Smith G. Description and rationale for a new operation for chronic pancreatitis. *Pancreas* 1987;2:701-5.
- [86] Frey C, Mikura K. Local resection of the head of the pancreas combined with longitudinal pancreaticojejunostomy in the management of patients with chronic pancreatitis. *Ann Surg* 1994;220:492-507.
- [87] Beger H, Imaizumi T. Duodenum preserving head resection in chronic pancreatitis. *J Hepatobil Pancreat Surg* 1995;2:13-18.