



New highly sensitive rodent and human tests for soluble amyloid precursor protein alpha quantification: preclinical and clinical applications in Alzheimer's disease.

Christiane Rose, Katell Peoc'H, Stéphanie Chasseigneaux, Claire Paquet, Julien Dumurgier, Fanchon Bourasset, Frédéric Calon, Jean-Louis Laplanche, Jacques Hugon, Bernadette Allinquant

► To cite this version:

Christiane Rose, Katell Peoc'H, Stéphanie Chasseigneaux, Claire Paquet, Julien Dumurgier, et al.. New highly sensitive rodent and human tests for soluble amyloid precursor protein alpha quantification: preclinical and clinical applications in Alzheimer's disease.. BMC Neuroscience, BioMed Central, 2012, 13 (1), pp.84. <10.1186/1471-2202-13-84>. <inserm-00723764>

HAL Id: inserm-00723764

<http://www.hal.inserm.fr/inserm-00723764>

Submitted on 13 Aug 2012

HAL is a multi-disciplinary open access archive for the deposit and dissemination of scientific research documents, whether they are published or not. The documents may come from teaching and research institutions in France or abroad, or from public or private research centers.

L'archive ouverte pluridisciplinaire **HAL**, est destinée au dépôt et à la diffusion de documents scientifiques de niveau recherche, publiés ou non, émanant des établissements d'enseignement et de recherche français ou étrangers, des laboratoires publics ou privés.

METHODOLOGY ARTICLE

Open Access

New highly sensitive rodent and human tests for soluble amyloid precursor protein alpha quantification: preclinical and clinical applications in Alzheimer's disease

Christiane Rose¹, Katell Peoc'h², Stéphanie Chasseigneaux^{1,2}, Claire Paquet^{3,4,5}, Julien Dumurgier³, Fanchon Bourasset², Frédéric Calon⁶, Jean-Louis Laplanche², Jacques Hugon^{3,4,5} and Bernadette Allinquant^{1*}

Abstract

Background: Amyloid precursor protein (APP), a key molecule in Alzheimer's disease (AD), is metabolized in two alternative cleavages, generating either the amyloidogenic peptides involved in AD pathology or the soluble form of APP (sAPP α). The level of amyloidogenic peptides in human cerebrospinal fluid (CSF) is considered to be a biomarker of AD, whereas the level of sAPP α in CSF as a biomarker has not been clearly established. sAPP α has neurotrophic and neuroprotective properties. Stimulating its formation and secretion is a promising therapeutic target in AD research. To this end, very sensitive tests for preclinical and clinical research are required.

Methods: The tests are based on homogenous time-resolved fluorescence and require no washing steps.

Results: We describe two new rapid and sensitive tests for quantifying mouse and human sAPP α . These 20 μ l-volume tests quantify the levels of: i) endogenous mouse sAPP α in the conditioned medium of mouse neuron primary cultures, as well as in the CSF of wild-type mice, ii) human sAPP α in the CSF of AD mouse models, and iii) human sAPP α in the CSF of AD and non-AD patients. These tests require only 5 μ l of conditioned medium from 5×10^4 mouse primary neurons, 1 μ l of CSF from wild-type and transgenic mice, and 0.5 μ l of human CSF.

Conclusions: The high sensitivity of the mouse sAPP α test will allow high-throughput investigations of molecules capable of increasing the secretion of endogenous sAPP α in primary neurons, as well as the *in vivo* validation of molecules of interest through the quantification of sAPP α in the CSF of treated wild-type mice. Active molecules could then be tested in the AD mouse models by quantifying human sAPP α in the CSF through the progression of the disease. Finally, the human sAPP α test could strengthen the biological diagnosis of AD in large clinical investigations. Taken together, these new tests have a wide field of applications in preclinical and clinical studies.

Keywords: Alzheimer's disease, Soluble amyloid precursor protein alpha, Homogeneous time-resolved fluorescence, Rodent, Human, Cerebrospinal fluid, Primary neurons, Sensitivity

* Correspondence: bernadette.allinquant@inserm.fr

¹INSERM UMR 894, Université Paris Descartes, Sorbonne Paris Cité, Faculté de Médecine, Paris, France

Full list of author information is available at the end of the article

Background

Alzheimer's disease (AD) is a neurodegenerative disease characterized by cognitive deficits leading to a progressive loss of functional autonomy. The neuropathological hallmarks of the disease are extracellular amyloid deposits and intracellular neurofibrillar tangles containing phosphorylated Tau (pTau) [1]. According to recently proposed AD diagnostic criteria, diagnosis is based on clinical criteria, medical history, neuropsychological evaluation, morphological neuroimaging, cerebrospinal (CSF) biomarkers and/or molecular imaging (PET scan) [2]. AD is biologically characterized by the combination of low A β 1-42 peptide levels and high levels of total Tau and Tau phosphorylated on threonine 181 (pTau181) in the CSF [3-6]. However, new biomarkers are needed to better discriminate AD from non-AD patients and to improve the diagnosis of AD in patients with atypical CSF profiles.

Amyloid precursor protein (APP) is a key molecule in AD pathology. Proteolytic cleavages of APP by the sequential actions of β - and γ -secretases form the neurotoxic amyloid beta (A β) peptide, which typically consists of 40 or 42 amino acid residues (the amyloidogenic pathway). An alternative cleavage by α -secretase, which splits the APP sequence in the middle of the amyloid peptide sequence, prevents formation of the A β peptide and releases the resulting APP N-terminal ectodomain (sAPP α) [7-9]. The physiological regulation of β and α cleavages is poorly established. However, recent papers describe an α cleavage following the β cleavage, as the C-terminal fragment (C99) released after β -secretase cleavage can be processed in α -secretase to generate the C83 fragment [10]. In addition, truncated A β peptide of 14 to 16 residues generated from the sequential actions of β and α -secretases have been identified in the CSF [11]. Interestingly, an inhibitory domain for γ -secretase activity in the C83 fragment has been identified able to down regulate the production of A β peptide [12]. In addition to its regulation of A β peptide, α -secretase cleavage appears very important as sAPP α is involved in several functions [13,14]. sAPP α is known for its neurotrophic and neuroprotective properties [13,14]. In addition, it stimulates the proliferation of neuroblasts from the sub-ventricular zone and increases long-term potentiation [15,16].

Recent studies have investigated sAPP α as a putative biomarker of AD [17,18] and tested the hypothesis that dysregulation of the alternative cleavage of APP may contribute to the pathophysiology of the disease. In the past, human sAPP α has been evaluated by western blotting [19-22], ELISA [23,24], and multiplex technology [17,18,25]. However, some of the findings regarding sAPP α levels in human CSF have been contradictory. Such discordant results signal the need for an ideal

test that allows very sensitive and specific detection of sAPP α in small amounts of human CSF. Recently, a new technology (Alpha ScreenTM) [26] requiring no washing and using low sample volume has been applied to sAPP α (AlphaLISA) but no results have been published yet.

From a research perspective, sAPP α quantification in preclinical studies in rodents is also necessary to better understand AD pathophysiology and to develop new therapeutic targets. Different cell lines, which include neuroblastoma cells, are currently being used to study APP metabolism *in vitro*. Although rodent primary neurons produce low amounts of A β peptide [27], this model remains interesting to study the response of sAPP α to AD therapeutic drug candidates before their *in vivo* validation in mice or rats. To effectively evaluate these models, a sensitive, reproducible and rapid test is needed to accurately assess sAPP α levels in the conditioned medium of rodent neuron primary cultures and to create high-throughput drug screening assays. Tests are also needed for the *in vivo* evaluation of candidate drugs identified in *in vitro* screens, both in wild-type mice and in transgenic AD mouse models.

We describe two new rapid and sensitive sAPP α tests that are based on homogenous time-resolved fluorescence (HTRF) and can be used to quantify the levels of: i) endogenous rodent sAPP α in the conditioned medium of mouse primary neurons, as well as in the CSF of wild type mice; ii) human sAPP α in the CSF of AD mouse models; and iii) human sAPP α in the CSF of AD and non-AD patients. These tests require only 5 μ l of conditioned medium from 5×10^4 mouse primary neurons, 1 μ l of CSF from wild-type and transgenic AD mouse models or 0.5 μ l of human CSF.

Results and discussion

We developed two new sAPP α assays using an adaptation of the HTRF technology: one detects mouse/rodent-sAPP α (r-sAPP α) and the other human-sAPP α (h-sAPP α) through the application of two different APP antibodies (Figure 1). Both tests are single-step homogenous assays that require no washing unlike most ELISA procedures. This absence of multiple washing steps increases the speed and reproducibility of the assay. The final volume of the test is 20 μ l, which allows detection in a 384-well plate for high-throughput investigations. These tests are extremely easy to use and require few preanalytical preparations.

Analytical performance of the HTRF sAPP α assays

The purity of the standard recombinant proteins h-sAPP α and r-sAPP α was checked by SDS-PAGE (Figure 2A). We evaluated the specificity of the h-sAPP α assay using human-sAPP β (h-sAPP β) and r-sAPP α recombinant proteins, which both contain the MAB 348 epitope, and the

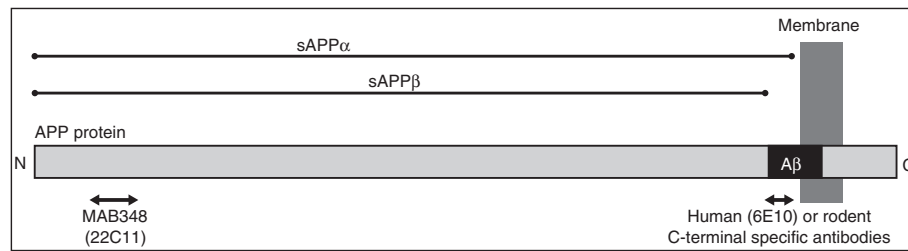


Figure 1 Antibodies used for human and rodent sAPP α tests. For the human assay, the antibody 6E10 (specific for h-A β 1-16) binds to a h-sAPP α epitope, which differs from the r-sAPP α by three amino acids. In the rodent assay, this antibody is substituted by a rodent A β 1-16-specific antibody. Furthermore, this epitope is absent from sAPP β , hence, these two C-terminal sAPP α antibodies determine the specificity of the assay whereas MAB 348 (22C11) detects both human and rodent N-terminal fragments.

human peptide A β 1-42 (h-A β 1-42), which contains the 6E10 epitope; both epitopes are necessary for h-sAPP α assay. The signal obtained with 3–200 ng/ml of h-sAPP β , r-sAPP α and h-A β 1-42 was similar to that obtained for the blank, demonstrating that the h-sAPP α does not cross-react with any of these negative controls (Figure 2B). We evaluated the specificity of the r-sAPP α assay using recombinant h-sAPP α , h-sAPP β and the h-A β 1-42 peptide. We detected a cross-reactivity level of 23% with h-sAPP α , indicating that the rodent C-terminal sAPP α antibody is less specific than the human sAPP α 6E10 antibody (slope for r-sAPP α : 0.73 ± 0.02 , slope for h-sAPP α : 0.17 ± 0.01). No cross-reactivity was observed with h-sAPP β or h-A β 1-42 (Figure 2C).

We obtained a linear response using 3–200 ng/ml of recombinant h-sAPP α or r-sAPP α , which indicated that the limit of detection was approximately 3 ng/ml (Figure 2B, C). We then evaluated the linearity of both assays with serial dilutions of human (h-) or mouse (r-) CSF. In both cases, the slopes obtained with h-CSF (1.39 ± 0.04) and r-CSF (0.90 ± 0.07) were parallel to the standard curves generated by recombinant human (1.49 ± 0.05) and rodent (0.88 ± 0.06) sAPP α , respectively. These results demonstrate that sAPP α levels in the CSF can be accurately evaluated in these assays with only 0.5 μ l (5 μ l diluted 1/10) of h-CSF or 1 μ l (5 μ l diluted 1/5) of r-CSF (Figure 3A, B).

To assess the intra- and inter-assay imprecision of the h-sAPP α assay, five h-CSF samples were each tested ten times on one plate in the same experiment and were tested three times in three independent experiments. The mean values for intra- and inter-assay imprecision were <5% with one exception in each experiment. Imprecision was 6.6% for one CSF sample in the intra-assay experiment and 8.3% for a different CSF sample in the inter-assay experiment (Table 1).

To assess the intra- and inter-assay imprecision of the r-sAPP α assay, three samples of conditioned media from mouse neuron primary cultures were each tested ten times on one plate in the same experiment and were

each tested three times in three independent experiments. The mean values for the intra- and inter-assay imprecision were below 6% and 7%, respectively, with one exception of 11.4% for one sample in the inter-assay experiment (Table 2).

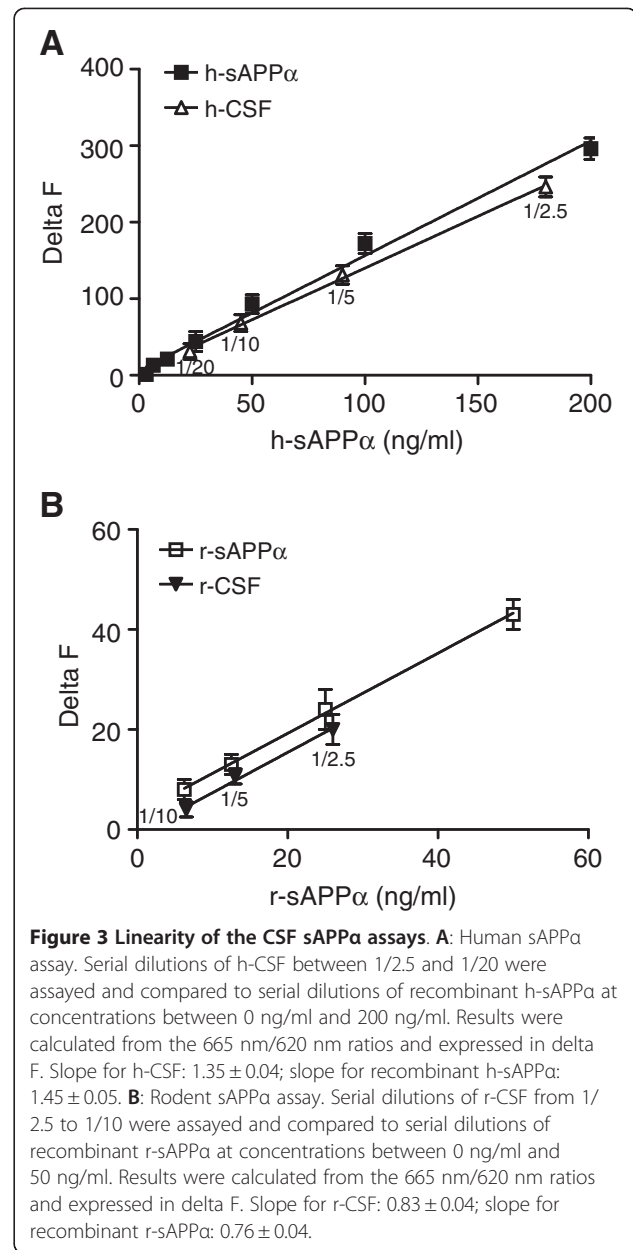
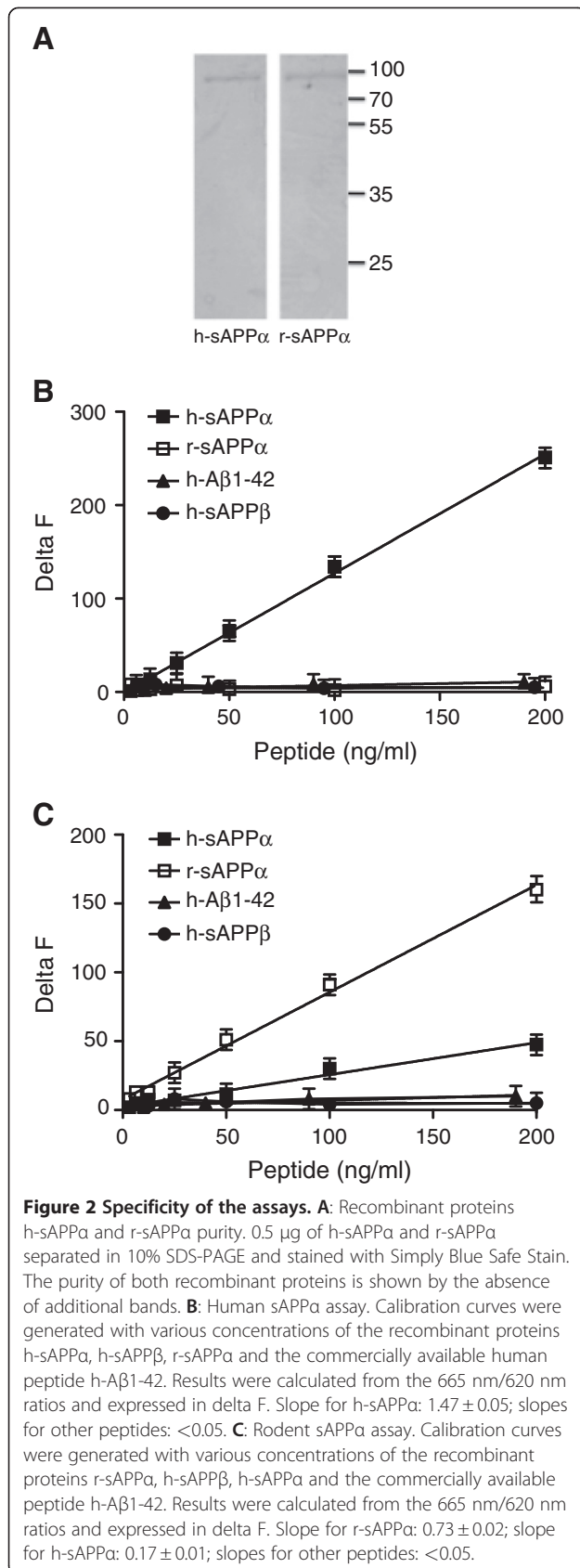
We then examined the stability of h-CSF sAPP α . First, we evaluated the effect of storage in polypropylene or polystyrene tubes. Five samples were divided into polypropylene or polystyrene tubes and stored for 24 hours at -80°C . The h-sAPP α values of samples stored in polystyrene tubes were not significantly different from those of samples stored in polypropylene tubes (mean recovery: $93 \pm 2\%$; Table 3), which is a real concern in a clinical practice [28-30].

Next, we evaluated whether storage temperature affected the stability of h-sAPP α . Five aliquots of h-CSF were stored for 24 hours at -80°C , -20°C , $+4^{\circ}\text{C}$ or room temperature, or were stored at -80°C and subjected to three freeze/thaw cycles during three days. No significant differences were detected for the different storage conditions or for the samples that underwent the three freeze/thaw cycles. Thus, sAPP α in CSF appears to be very stable (Table 4).

sAPP α assay development: *in vitro* applications

We used our sAPP α assays to measure the sAPP α levels in the conditioned media of human neuroblastoma cells and mouse neuron primary cultures.

Human neuroblastoma cells and mouse primary neurons were plated in 96-well plates. We first determined whether sAPP α secretion was proportional to the number of cells per well and to the time of incubation (Figure 4A, B). sAPP α secretion from cultured cells can be enhanced *in vitro* by the PKC-mediated stimulation of the metalloprotease ADAM17 [31-33]. The neuropeptide PACAP 27 [34] promotes the α -secretase-mediated cleavage of full-length APP through the constitutive ADAM10 metalloprotease. The green tea polyphenol EGCG stimulates either ADAM10 or ADAM17, depending on the cell type being treated [35,36]. We



treated 3×10^4 neuroblastoma cells with PDBu (a PKC activator) to evaluate its impact on the levels of sAPP α produced in conditioned media. We demonstrated that 0.01 to 0.3 μ M of PDBu treatment caused a dose-dependent increase in the level of h-sAPP α in the conditioned medium of neuroblastoma cells (Figure 4C). This increase was completely abolished by treatment with the PKC inhibitor GF-109203 or the α -secretase inhibitor TAPI 0 (Figure 4D).

To further validate the new r-sAPP α assay, we used mouse primary neurons, at six days *in vitro*. We first checked by western blotting the presence of r-sAPP α in the conditioned medium recognized by both 22C11 and rodent specific C-terminal antibodies (Figure 5A). This

Table 1 Intra- and inter-assay imprecision in the h-sAPPα

Intra-assay imprecision		
Human CSF sample	h-sAPPα (ng/ml)	CV (%)
1	705 ± 13	1.8
2	432 ± 18	4.1
3	434 ± 16	3.6
4	556 ± 21	3.7
5	270 ± 18	6.6
Inter-assay imprecision		
Human CSF sample	h-sAPPα (ng/ml)	CV (%)
1	703 ± 24	3.4
2	424 ± 21	4.9
3	503 ± 17	3.3
4	493 ± 41	8.3
5	338 ± 17	5.0

Intra-assay imprecision: five CSF samples were tested ten times on one plate. Inter-assay imprecision: the same samples were tested three times in three independent experiments. Mean ± SEM of h-sAPPα concentration (ng/ml). CV: coefficient of variation (%).

sAPPα band at 100 kDa is specific of the isoform 695 present in neurons [37].

Mouse primary neurons were plated in 96 well-plates at the density of 5×10^4 cells per well. We checked that r-sAPPα secreted was proportional to the number of neurons and to the time of incubation (Figure 5B,C). Treatment of primary neurons with 30 μM EGCG or with 1 μM PACAP-27 produced a strong increase in the level of endogenous r-sAPPα in the incubation medium (Figure 5D). These results from our rodent test validate previously reported western blotting data from treated neuroblastoma cells [34,35].

The rodent test detected sAPPα in only 5 μl of conditioned medium from 5×10^4 primary neurons cultured in 96-well plates, without concentration of the proteins. Five CSF samples were divided into polypropylene or

Table 2 Intra- and inter-assay imprecision in the r-sAPPα assay

Intra-assay imprecision		
Neuron conditioned medium	r-sAPPα (ng/ml)	CV (%)
1	23.4 ± 1.4	5.9
2	15.9 ± 0.7	4.4
3	17.4 ± 0.6	3.4
Inter-assay imprecision		
Neuron conditioned medium	r-sAPPα (ng/ml)	CV (%)
1	24.7 ± 1.5	6.0
2	14.8 ± 1.7	11.4
3	18.6 ± 1.2	6.4

Intra-assay imprecision: three conditioned media samples from three different experiments were tested ten times on one plate. Inter-assay imprecision: the same samples were tested three times in three independent assays. Mean ± SEM of r-sAPPα concentration (ng/ml). CV: coefficient of variation (%).

Table 3 Stability of h-sAPPα in CSF stored at different conditions

Effect of storing CSF in polypropylene and polystyrene tubes			
Samples	Polypropylene	Polystyrene	%
	h-sAPPα (ng/ml)	h-sAPPα (ng/ml)	
1	669 ± 20	659 ± 41	98 ± 6
2	399 ± 20	391 ± 24	98 ± 6
3	456 ± 2.5	412 ± 16	90 ± 3
4	535 ± 16	482 ± 18	90 ± 3
5	236 ± 2	212 ± 7	89 ± 3

Five CSF samples were divided into polypropylene or polystyrene tubes and stored for 24 hours at -80°C. Mean ± SEM of h-sAPPα in ng/ml and (%) compared to the aliquot stored in polypropylene tubes.

polystyrene tubes and stored for 24 hours at -80°C. Mean ± SEM of h-sAPPα in ng/ml and (%) compared to the aliquot stored in polypropylene tubes. In previously published reports, evaluating sAPPα in conditioned media required higher numbers of cells combined with trichloroacetic acid precipitation of proteins [34], media lyophilization [35] or protein concentration with centrifugal filters [36].

sAPPα assay development: *in vivo* applications in mice

To evaluate the feasibility of measuring sAPPα levels in the CSF of mice, we used 14-month-old wild-type mice and 12-month-old AD triple transgenic mice (3xTg AD) [38]. The maximum volume of CSF obtained from one mouse was 5 μl. sAPPα assays were performed on each CSF sample diluted 1/5 or 1/10. The mean r-sAPPα concentrations in the CSF were 137 ± 17 ng/ml for wild-type mice and 105 ± 8 ng/ml for 3xTg AD mice. In the 3xTg AD mice, the h-sAPPα concentration was 34 ± 6 ng/ml (Table 5). In the 3xTg AD mice, the h-sAPPα derived from the transgene was specifically and distinctly quantified in the CSF relative to the endogenous r-sAPPα, whereas the r-sAPPα may be contaminated by 23% h-sAPPα (Figure 2C). One μl of mouse CSF was sufficient to detect r-sAPPα as well as h-sAPPα and detection was linear for serially diluted samples. This level of sensitivity may allow the levels of the human transgenic

Table 4 Stability of h-sAPPα in CSF stored at different conditions

Effect of storage temperature					
Samples	-80°C	-20°C	+4°C	RT	F/T
1	100 ± 6	101 ± 5	100 ± 11	93 ± 1	103 ± 2
2	100 ± 7	93 ± 9	95 ± 15	85 ± 14	93 ± 6
3	100 ± 1	77 ± 1	82 ± 4	80 ± 4	76 ± 4
4	100 ± 5	113 ± 2	80 ± 4	109 ± 3	99 ± 5
5	100 ± 3	86 ± 5	81 ± 4	70 ± 5	83 ± 1

Five CSF samples were divided in five aliquots and stored for 24 hours at one of several different temperatures including room temperature (RT), or stored at -80°C and exposed to three freeze/thaw cycles (F/T) within a period of three days.

The results were normalized (%) for the results from the aliquot stored at -80°C.

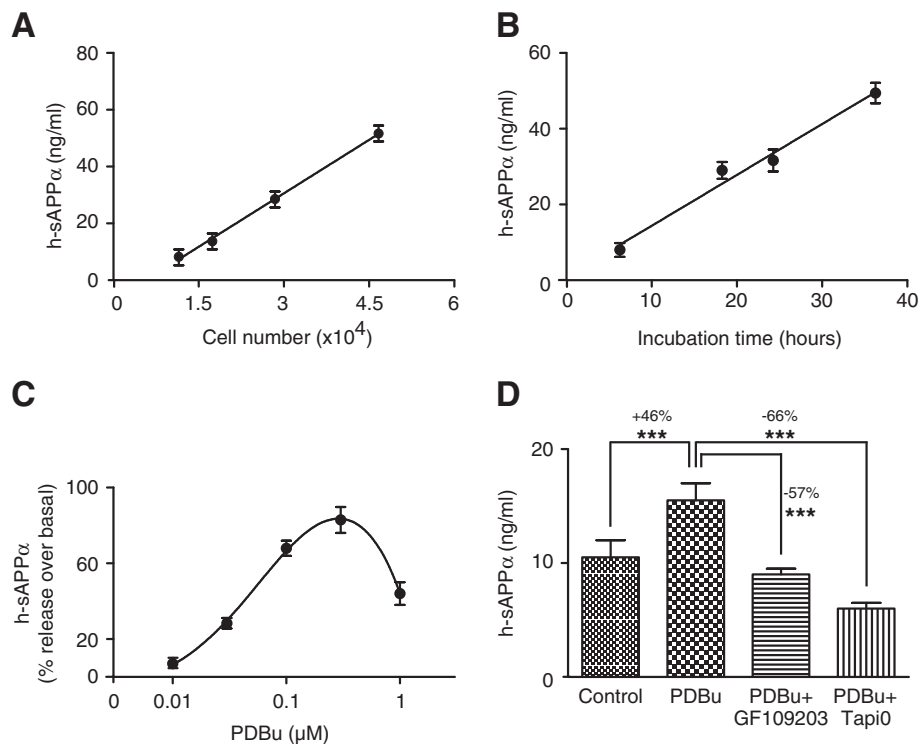


Figure 4 *In vitro* secretion of h-sAPP α by SH-SY5Y human neuroblastoma cells and its modulation by pharmacologic agents. **A:** Various numbers of SH-SY5Y human neuroblastoma cells (between 10^4 and 5×10^4) were plated in 96-well plates in 0.1 ml final volume. After a 24 hours incubation, medium was collected and 5 μl of each sample was tested in duplicate in the h-sAPP α assay. **B:** 3×10^4 SH-SY5Y cells were plated in 96-well plates in 0.1 ml final volume. Medium was collected after incubations of 6 hours, 18 hours, 24 hours or 36 hours, 5 μl of each sample was tested in duplicate in the h-sAPP α assay. **C:** 3×10^4 SH-SY5Y cells were plated in 96-well plates in 0.1 ml final volume. The next day, the conditioned medium was discarded and replaced by the same medium containing 1% N2 in place of FCS. Various concentrations of PDBu (0.01 – 1 μM) were then added. After an incubation of 24 hours, medium was collected and 5 μl of each sample was tested in duplicate in the h-sAPP α assay. **D:** 3×10^4 SH-SY5Y cells were plated in 96-well plates in 0.1 ml final volume. The next day, the conditioned medium was discarded and replaced by the same medium containing 1% N2 in place of FCS. Then, GF109203 (10 μM) and TAPI 0 (30 μM) were added and PDBu (0.3 μM) was added 1 hour later. After a 24 hour incubation, the medium was collected and 5 μl of each sample was tested in duplicate in the h-sAPP α assay. ***: $p < 0.001$.

sAPP α to be followed through the progression of the disease, which has never been reported previously.

sAPP α assay development: *in vivo* applications in human

We then assessed h-sAPP α levels in the CSF of AD and non-AD patients. High levels of h-sAPP α in the CSF determined using a multiplex technology were reported to be associated with AD [17,18,25]. In this study, we evaluated our h-sAPP α assay using CSF samples from patients who had been classified according to validated criteria as either non-AD or AD by a team specialized in the diagnosis of neurodegenerative disorders (CP, JD, JH). These patients were matched according to sex and age and significantly differ by the MMSE test (Table 6). We checked by western blotting in some CSF samples the presence of two sAPP α isoforms recognized by both 22C11 and 6E10 antibodies and the absence of specific detectable cleaved isoforms (Figure 6A). The two sAPP α isoforms of molecular weights (MW) 100 and 125 kDa

detected are similar to that observed in soluble fraction of mouse brains (data not shown) and correspond to mature glycosylated forms of sAPP α 695 [27,39]. However we cannot exclude that the higher isoform correspond to the sAPP α 751 containing KPI domain and present in glial cells [37,39]. The bands of lower MW and lower intensity detected were non specific as recognized by the anti-mouse secondary antibody (Figure 6A). In our population, A β 1-42 concentrations were lower (-51%; $p < 0.001$; Figure 6C) and Tau and pTau181 concentrations were higher (+200% and +123%, respectively; $p < 0.001$; Figure 6D, E) in the AD group than in the non-AD group. We found significantly higher sAPP α concentrations in AD CSF compared to non-AD CSF (+30%; $p < 0.01$; Figure 6B), which agrees with recent studies in which the sAPP α concentrations in CSF were determined by a multiplex technology [17,18,25].

Furthermore, our test detected h-sAPP α in as little as 0.5 μl of CSF, which is a vast improvement over ELISA

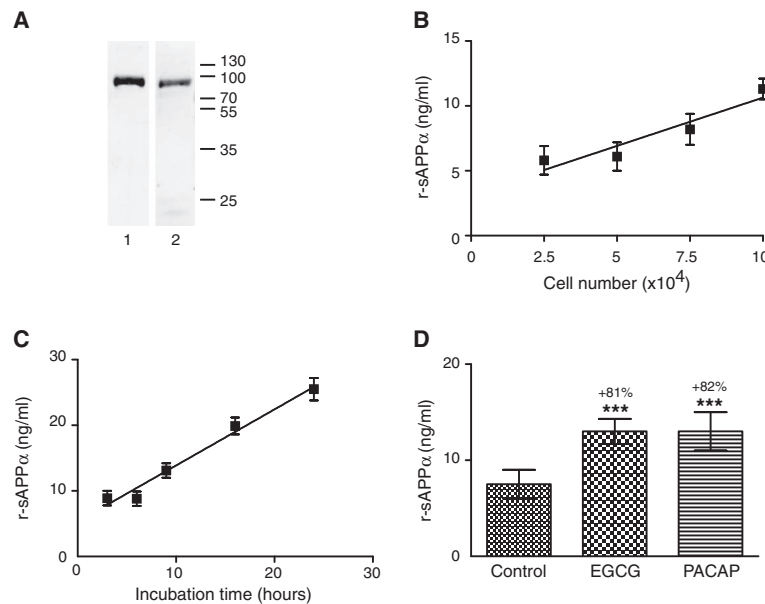


Figure 5 *In vitro* secretion of r-sAPPα by cortical neurons in primary culture and its modulation by pharmacologic agents. **A:** The conditioned medium of 4×10^5 neurons at six days *in vitro* was precipitated by a mixture of trichloroacetic acid/acetone and the pellet was resuspended in Laemmli buffer. An equal volume was loaded in two wells in 10% SDS-PAGE for western blotting. r-sAPPα at 100 kDa was recognized both by 22C11 (2) and by the rodent C-terminal sAPPα antibodies (1). **B:** Various numbers of cortical neurons (between 10^4 and 7×10^4) were plated in 96-well plates in 0.1 ml final volume. After six days in culture, 60% of the conditioned medium was discarded and replaced by fresh medium. 24 hours later, medium was collected and 5 μl of each sample was tested in duplicate in the r-sAPPα assay. **C:** 5×10^4 neurons were plated in 96-well plates in 0.1 ml final volume. After six days *in vitro*, 60% of the conditioned medium was discarded and replaced by fresh medium. Medium was collected after incubations of 3 hours, 6 hours, 9 hours or 24 hours and 5 μl of each sample was tested in duplicate in the r-sAPPα assay. **D:** 5×10^4 neurons were plated in 96-well plates in 0.1 ml final volume. After six days *in vitro*, 60% of the conditioned medium was discarded and replaced by fresh medium. EGCG (30 μM) and PACAP-27 (1 μM) were added and the medium was collected 24 hours later. 5 μl of each sample was tested in duplicate in the r-sAPPα assay. ***: $p < 0.001$.

tests and multiplex technology, which require sample volumes of 100 μl and 25 μl, respectively. The low amounts of CSF required by our test will allow large clinical and longitudinal investigations in patients to validate sAPPα as an AD biomarker.

Conclusions

This is the first description of two highly sensitive tests that can be used to detect sAPPα in a variety of samples. Samples include the conditioned media of human neuroblastoma cells and mouse primary neurons, as well as very small samples of biological fluids, such as mouse and human CSF.

These new tools will have very wide applications from pre-clinical to clinical studies. Together, their rapidity,

sensitivity and small incubation volumes will facilitate high-throughput investigations of drugs capable of increasing the secretion of endogenous sAPPα from primary neurons. The tests may be subsequently validated for *in vivo* analyses by using them to evaluate at different time points sAPPα levels in the CSF of wild-type mice or AD mouse models treated with molecules that exhibit activity in *in vitro* screening assays. Finally, the human sAPPα test will allow sAPPα levels to be measured in the CSF of patients participating in large clinical investigations.

Methods

sAPPα assays

The quantification of human and rodent sAPPα was achieved by adapting the HTRF technology developed by

Table 5 Measurement of sAPPα in mouse CSF

Mice	r-sAPPα (ng/ml)	h-sAPPα (ng/ml)
Wild-type (5)	137 ± 17	0
3xTg AD (7)	105 ± 8 [#]	34 ± 6

CSF samples (2–5 μl) were collected from wild type or 3xTg AD mice and 1/5 or 1/10 dilutions of the CSF were tested in the r-sAPPα and in the h-sAPPα assays.[#]: This value includes 23% of h-sAPPα (see Figure 2C).

Table 6 Patient characteristics

Group (n)	Age ± SEM	M + F	MMSE ± SEM
Non AD (28)	68.9 ± 2.0	14 + 14	23.5 ± 0.7
AD (32)	72.4 ± 1.6	12 + 19	19.3 ± 1.0 **

AD: patients with Alzheimer's disease; non-AD: patients with other dementias; M: male; F: female. MMSE: mini mental state examination. **: $p < 0.01$.

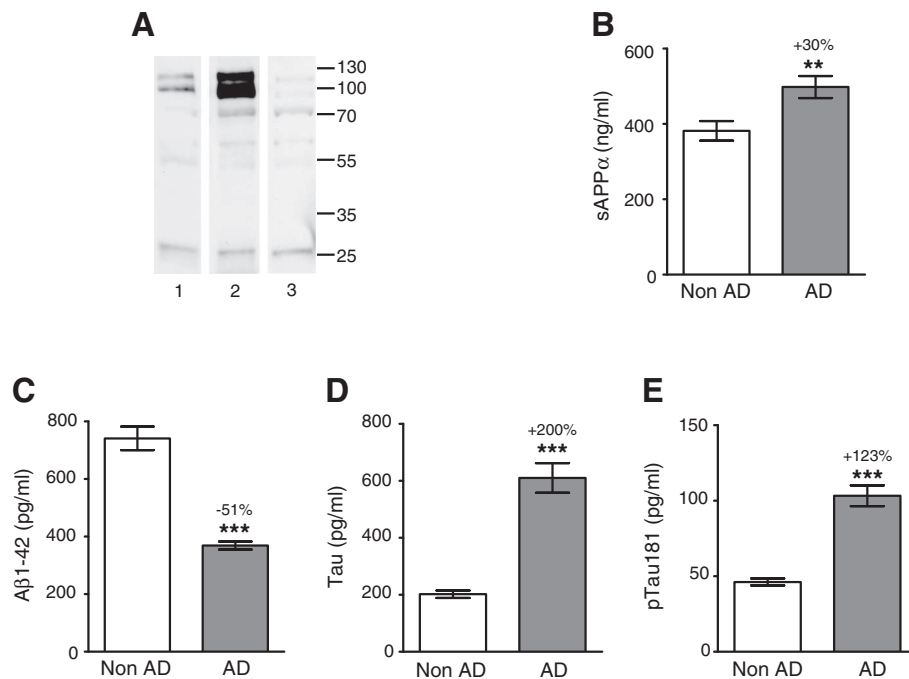


Figure 6 Concentrations of different biomarkers in the CSF of two groups of patients previously diagnosed as AD and non-AD. **A:** 4 μ g of CSF proteins were separated in 10% SDS-PAGE for western blotting. h-sAPP α (two isoforms) present in CSF are recognized by both the 6E10 (1) and the 22C11 (2) antibodies. The anti-mouse secondary antibody (3) recognized non specifically some bands. **B-E:** Concentrations of biomarkers in the CSF of AD patients group were compared to those in the CSF of non-AD patients. **: $p < 0.01$; ***: $p < 0.001$.

Cisbio international company (Bagnol sur Cèze, France). It is a single step immunoassay that employs two primary antibodies. The first antibody for both tests is directed to an epitope in the N-terminal domain of the APP protein, which is common to humans and rodents (22C11; MAB 348 from Chemicon, Billerica, MA, USA), and coupled to Europium cryptate, a donor fluorophore. The second antibody in each assay is specific for the C-terminal domain of either h-sAPP α (6E10) or r-sAPP α (SIG-39153; both antibodies are from Signet laboratories, and purchased from Covance, Dedham, MA, USA). Both of the secondaries antibodies were coupled to an acceptor fluorophore, such as D2 (Figure 1). When the donor and acceptor fluorophores are brought together by a biomolecular interaction, i.e., when sAPP α is present in the sample, a portion of the energy captured by the donor fluorophore during excitation is released through a fluorescence emission at 620 nm, while the remaining energy is transferred to the acceptor. This energy is then released by the acceptor as a specific fluorescence at 665 nm and is proportional to the concentration of sAPP α in the sample.

Recombinant h-sAPP α , r-sAPP α and h-sAPP β were produced in bacteria using a p-Gex vector and were purified from bacterial lysates using the glutathione-S-transferase system (GE Healthcare, Uppsala, Sweden), as previously described [40]. Their purity was checked by

10% SDS-PAGE (Bio-Rad, Hercules, CA, USA). The A β 1-42 peptide was purchased from Bachem (Weil am Rhein, Germany). Fluorophore labeling of antibodies was done by Cisbio.

The assay was performed in a final volume of 20 μ l in a 384-well white plate (Proxiplate; Perkin Elmer, Waltham, MA, USA). 5 μ l of conditioned medium from SH-SY5Y neuroblastoma cell cultures or from mouse neurons in primary culture, 5 μ l of rodent CSF dilutions (1/2.5, 1/5, 1/10), 5 μ l of human CSF dilutions (1/2.5, 1/5, 1/10, 1/20), or a calibration curve (human or rodent recombinants APP α , at concentrations of 3–200 ng/ml) in a 50 mM phosphate buffer pH 7.0 containing 0.2% BSA and 10 mM DTT, were added to 5 ng of the cryptate conjugate antibody and 20 ng of the D2 conjugate antibody. Both antibodies were diluted in 50 mM phosphate buffer pH 7.0 containing 0.4 M potassium fluoride. All measurements were performed in duplicate. For the negative control, phosphate buffer replaced the calibration curve. The plate covered with a plate sealer was centrifuged for 1 min at 1000 \times g and incubated overnight at room temperature. Then, the plate sealer was removed, and the plate was read on a compatible HTRF reader (Envision; Perkin Elmer, Waltham, MA, USA) at 620 and 665 nm. Results were calculated from the 665 nm/620 nm ratio and expressed in delta F: Delta F = ([test sample or calibration sample 665 nm/620 nm

ratio – negative control 665 nm/620 nm ratio)/[negative control 665 nm/620 nm ratio)] \times 100. Delta F is proportional to the sAPP α concentration.

Cell cultures

SH-SY5Y human neuroblastoma cells were obtained from the ATCC and maintained at 37°C under 5% carbon dioxide/95% humidified air incubator in a DMEM medium, supplemented with Glutamax, 10% fetal calf serum (FCS), 0.1% penicillin/streptomycin. Cells were plated (3×10^4 cells per well) in 96-well plates coated with 10 μ g/ml collagen. The next day, when cells were 60–80% confluent, the conditioned medium was discarded and replaced by the same medium containing 1% N2 (Gibco, Paisley, UK) in place of FCS. Then, 10 μ M GF-109203 (Sigma, St. Louis, MO, USA) and 30 μ M TAPI 0 (Calbiochem, San Diego, CA, USA) were added 1 hour before adding 0.3 μ M PDBu (Sigma, St. Louis, MO, USA) and the cells were incubated for 24 hours. After this period, conditioned media were collected, centrifuged at 800 \times g for 5 min at room temperature to remove any dead cells and the supernatant was immediately supplemented with 1X complete protease inhibitor cocktail (Roche, Bâle, Switzerland) and 5 μ l duplicate aliquots were tested in the h-sAPP α assay or were stored at –20°C until the h-sAPP α assay.

Cortical neuron primary cultures were obtained from E16 Swiss mouse embryos. Neurons were grown in a defined medium free of serum and supplemented with hormones, proteins, and salts as previously described [41]. Briefly, dissociated cells were plated (5×10^4 neurons per well) in 96-well plates coated with 1.5 μ g/ml polyornithin. After six days *in vitro*, 60% of the conditioned medium was discarded and replaced by fresh medium. Then, 30 μ M EGCG or 1 μ M PACAP-27 (Sigma, St. Louis, MO, USA) were added for a 24 hours incubation. At the end of this period, conditioned media were collected, centrifuged at 800 \times g for 5 min at room temperature and the supernatant was immediately supplemented with 1X complete protease inhibitor cocktail and 5 μ l duplicate aliquots were tested in the r-sAPP α assay or were stored at –20°C until the r-sAPP α assay.

Patients

60 patients were recruited from the Clinical and Research Memory Center (CMRR) in Paris Lariboisière Hospital, which is specialized in the care management of patients with cognitive disorders. We included in this study AD and non-AD patients for whom a lumbar puncture (LP) had been performed between November 1st, 2008 and November 1st, 2011 to investigate potential cognitive disorders. All patients had an extensive examination including clinical and neuropsychological evaluations, biological measurements and brain imaging. Based

on all available information, patients were classified into two groups (32 AD and 28 non-AD). Complex or unclear cases were discussed, and diagnoses were then set by a multidisciplinary team of neurologists, geriatricians and neuropsychologists. AD patients fit the criteria for probable AD, as defined by the NINCDS-ADRDA [42], and had biochemical CSF results associated with AD (low A β 1-42 levels, and high total Tau and pTau181 levels) [3-6].

Non-AD patients were diagnosed with other cognitive disorders, according to validated criteria, including: vascular dementia (n=7), frontotemporal degeneration (n=3), depression (n=2), anxiety (n=4), Lewy body disease (n=2), intoxication (n=1), supranuclear palsy (n=1), chronic hydrocephalus (n=2), alcoholism (n=5), and sleep apnea syndrome (n=1). Patients with unknown clinical diagnoses or who were not able to undergo testing or a magnetic resonance imaging were excluded. There was no Mild Cognitive Impairment patients in our study. LPs were performed on fasting patients in the month following their clinical diagnosis. CSF was collected in 12 ml polypropylene tubes (TC10PCS; CML, Nemours, France) in standardized conditions and transferred within 4 hours to the laboratory. It was then rapidly centrifuged at 1800 \times g for 10 min at 4°C. A small amount of CSF was used for routine analysis, including total cell count, bacteriologic exam, total protein and glucose concentration. CSF was aliquoted in polypropylene tubes of 1 ml and stored at –80°C until use for further analysis.

Measurements of A β 1-42, Tau and pTau181 levels in CSF were performed by sandwich ELISA according to the manufacturer's protocols (Innogenetics, Ghent, Belgium). A neurobiological AD profile was established for all the patients in this study.

SDS-PAGE and western blotting analysis

Human and rodent sAPP α recombinant proteins (0.5 μ g), were separated in 10% SDS-PAGE (Criterion; Bio-Rad, Hercules, CA, USA), and stained with SimplyBlueSafeStain (Invitrogen Life Technologies, Paisley, UK).

For western blotting analysis, 0.6 ml of conditioned medium at six days *in vitro* from 4×10^5 cortical neurons primary cultures were centrifuged at 800 \times g for 5 min at room temperature. The supernatant was precipitated overnight at –20°C with five volumes of a cold mixture 10% trichloroacetic acid/90% acetone. After centrifugation at 15,000 \times g for 20 min at 4°C, the pellet was washed with cold acetone and dried. Then, the pellet was resuspended in Laemmli buffer and an equal volume was loaded in two wells in 10% SDS-PAGE. After migration, the proteins were transferred onto polyvinylidene fluoride (PVDF) membranes (Immobilon; Millipore, Billerica, MA, USA) and blocked in 5% low fat milk in

Tris buffer saline, 0.02% Tween 20 (TBST). Membranes were incubated overnight with the appropriate primary antibody, 22C11 (1 µg/ml) or the rodent specific SIG-39153 (2 µg/ml) in TBST. Then after 5 washings in TBST, species-specific peroxidase-conjugated secondary antibodies were incubated 45 min at room temperature. After 5 washings the peroxidase signal was visualized using ECL (Western Blotting Detection Reagents; GE Healthcare, Uppsala, Sweden).

Human cerebrospinal fluid (4 µg protein) was diluted in Laemmli buffer and loaded in 10% SDS-PAGE. After migration, and transfer onto PVDF membranes, the membranes were processed as above with the appropriate primary antibody, 22C11 (1 µg/ml) or human specific 6E10 (2 µg/ml).

Ethics statement

All animal procedures followed the French and European Union regulations. The protocols of animal anesthesia and biological fluid punctures were performed according to French government ethical laws decree 86/109 and approved by the local Ethics Committee (Direction départementale des services vétérinaires de Paris, service de la protection et santé animales et de la protection de l'environnement), permit number: 75–354.

For the clinical study, the research project was approved by the Ethics Committee of Paris University Hospitals (CEERB Bichat University Hospital, Paris, France). All patients or caregivers gave their written informed consent for CSF assessment.

Mouse CSF sampling

We used seven triple transgenic mice (3xTg AD, 12-months-old) harboring three mutant genes: β -amyloid precursor protein (APP^{swE}), presenilin-1 (M146V) knock-in, and Tau (P301L) [38] and five non-transgenic controls (14-months-old). CSF from anesthetized mice was taken from the cisterna magna using a glass capillary, according to the method of Fisher et al. [43]. The procedure was performed to keep blood contamination to a minimum. Samples of 2 to 5 µl were transferred directly to a microvial, centrifuged, and the supernatant immediately frozen on dry ice, and then stored at -20°C until rodent and human sAPP α assays were performed.

Statistical analysis

Statistical differences between groups were analyzed using the unpaired Student's *t*-test. Differences were considered significant if $p < 0.05$ (GraphPad Prism software, La Jolla, CA, USA).

Abbreviations

A β 1-42: β -amyloid peptide 1–42; AD: Alzheimer's disease; BSA: bovine serum albumin; CMRR: Clinical and Research Memory Center; CSF: Cerebrospinal fluid; CV: Coefficient of variation; DTT: Dithiothreitol; EGCG: Epigallocatechin-

3-gallate; ELISA: Enzyme-linked immunosorbent assay; h-sAPP α : Human sAPP α ; h-sAPP β : Human sAPP β ; MMSE: Mini-mental state examination; PACAP-27: Pituitary adenylatecyclase-activating polypeptide (27aa); MW: Molecular weight; PDBu: Phorbol 12,13 dibutyrate; PKC: Protein kinase C; pTau 181: Tau phosphorylated on threonine 181; PVDF: Polyvinylidene fluoride; TBST: Tris buffer saline; r-sAPP α : Rodent sAPP α ; sAPP α : Soluble amyloid precursor protein alpha; sAPP β : Soluble amyloid precursor protein beta; SEM: Standard error of the mean.

Competing interests

The authors declare that the h-sAPP α test described in this publication has been patented (C. Rose and B. Allinquant, 2008; patent number EP 08 305 704.2). Otherwise, the authors declare that no competing interests exist.

Acknowledgements

This work was supported by Association Internationale pour la Recherche sur la Maladie d'Alzheimer and INSERM.

Author details

¹INSERM UMR 894, Université Paris Descartes, Sorbonne Paris Cité, Faculté de Médecine, Paris, France. ²Service de Biochimie et de Biologie moléculaire, Hôpital Lariboisière, AP-HP, Paris, France; Biologie cellulaire, Faculté de Pharmacie, Université Paris Descartes, Paris, France. ³Centre Mémoire de Ressources et de Recherche Paris Nord Ile de France, Groupe Hospitalier Lariboisière Fernand Widal Saint-Louis, Université Paris VII, Paris, France. ⁴Laboratoire d'Histologie et de Biologie du Vieillessement, Groupe Hospitalier Lariboisière Fernand Widal Saint-Louis, Université Paris VII, Paris, France. ⁵INSERM U839, Institut du Fer à Moulin, Paris, France. ⁶Faculty of Pharmacy, Laval University, Quebec, Canada.

Authors' contributions

CR, BA, SC and JLL conceived and designed experiments. CR performed the experiments. CR, BA, SC, KP and CP analyzed the data. FB and FC extended and genotyped 3xTg AD mice. JD, JH and CP selected patients and diagnosed them. KP and JLL evaluated the A β 1-42, Tau and pTau markers. CR, BA, SC, KP and CP wrote the paper. All authors read and approved the final manuscript.

Received: 16 May 2012 Accepted: 23 July 2012

Published: 23 July 2012

References

1. Duyckaerts C, Delatour B, Potier MC: Classification and basic pathology of Alzheimer disease. *Acta Neuropathol* 2009, **118**(1):5–36.
2. McKhann GM, Knopman DS, Chertkow H, Hyman BT, Jack CR Jr, Kawas CH, Klunk WE, Koroshetz WJ, Manly JJ, Mayeux R, et al: The diagnosis of dementia due to Alzheimer's disease: recommendations from the National Institute on Aging-Alzheimer's Association workgroups on diagnostic guidelines for Alzheimer's disease. *Alzheimer Dement* 2011, **7**(3):263–269.
3. Blennow K, Hampel H: CSF markers for incipient Alzheimer's disease. *Lancet Neurol* 2003, **2**(10):605–613.
4. Ibach B, Binder H, Dragon M, Poljansky S, Haen E, Schmitz E, Koch H, Putzhammer A, Klauenemann H, Wieland W, et al: Cerebrospinal fluid tau and beta-amyloid in Alzheimer patients, disease controls and an age-matched random sample. *Neurobiol Aging* 2006, **27**(9):1202–1211.
5. Blennow K, Hampel H, Weiner M, Zetterberg H: Cerebrospinal Fluid and Plasma Biomarkers in Alzheimer Disease. *Nat Rev Neurol* 2010, **6**:131–144.
6. Mattsson N, Rosen E, Hansson O, Andreassen N, Parnetti L, Jonsson M, Herukka SK, van der Flier WM, Blankenstein MA, Ewers M, et al: Age and diagnostic performance of Alzheimer disease CSF biomarkers. *Neurology* 2012, **78**(7):468–476.
7. Esch FS, Keim PS, Beattie EC, Blacher RW, Culwell AR, Olterstorf T, McClure D, Ward PJ: Cleavage of Amyloid beta peptide during constitutive processing of its precursor. *Science* 1992, **248**(4959):1122–1124.
8. Anderson JP, Esch DS, Keim PS, Sambamurti K, Lieberburg I, Robakis NK: Exact cleavage site of Alzheimer amyloid precursor in neuronal PC-12. *Neurosci Lett* 1991, **128**(1):126–128.
9. Wang R, Meschia JF, Cotter RJ, Sisodia SS: Secretion of the beta/A4 Amyloid Precursor Protein. *J Biol Chem* 1991, **266**(25):16960–16964.

10. Flammang B, Pardossi-Piquard R, Sevalle J, Debayle D, Dabert-Gay AS, Thevenet A, Lauritzen I, Checler F: Evidence that the amyloid-beta protein precursor intracellular domain, AICD, derives from beta-secretase-generated C-terminal fragment. *J Alzheimer Dis* 2012, **30**(1):145–153.
11. Portelius E, Price E, Brinkmalm G, Stiteler M, Olsson M, Persson R, Westman-Brinkmalm A, Zetterberg H, Simon AJ, Blennow K: A novel pathway for amyloid precursor protein processing. *Neurobiol Aging* 2011, **32**(6):1090–1098.
12. Tian Y, Crump CJ, Li YM: Dual role of alpha-secretase cleavage in the regulation of gamma-secretase activity for amyloid production. *J Biol Chem* 2010, **285**(42):32549–32556.
13. Mattson MP: Cellular actions of beta-amyloid precursor protein and its soluble and fibrillogenic derivatives. *Physiol Rev* 1997, **77**(4):1081–1132.
14. Chasseigneaux S, Allinquant B: Functions of Abeta, sAPPalpha and sAPPbeta: similarities and differences. *J Neurochem* 2012, **120**(Suppl 1):99–108.
15. Caille I, Allinquant B, Dupont E, Bouillot C, Langer A, Müller U, Prochiantz A: Soluble form of amyloid precursor protein regulates proliferation of progenitors in the adult subventricular zone. *Development* 2004, **131**(9):2173–2181.
16. Taylor CJ, Ireland DR, Ballagh I, Bourne K, Marechal NM, Turner PR, Bilkey DK, Tate WP, Abraham WC: Endogenous secreted amyloid precursor protein-alpha regulates hippocampal NMDA receptor function, long-term potentiation and spatial memory. *Neurobiol Dis* 2008, **31**(2):250–260.
17. Lewczuk P, Kamrowski-Kruck H, Peters O, Heuser I, Jessen F, Popp J, Burger K, Hampel H, Frolich L, Wolf S, et al: Soluble amyloid precursor proteins in the cerebrospinal fluid as novel potential biomarkers of Alzheimer's disease: a multicenter study. *Mol Psychiatr* 2010, **15**(2):138–145.
18. Lewczuk P, Popp J, Leleental N, Kolsch H, Maier W, Kornhuber J, Jessen F: Cerebrospinal fluid soluble amyloid-beta protein precursor as a potential novel biomarkers of Alzheimer's disease. *J Alzheimer Dis* 2012, **28**(1):119–125.
19. Lannfelt L, Basun H, Wahlund LO, Rowe BA, Wagner SL: Decreased alpha-secretase-cleaved amyloid precursor protein as a diagnostic marker for Alzheimer's disease. *Nat Med* 1995, **1**(8):829–832.
20. Almkvist O, Basun H, Wagner SL, Rowe BA, Wahlund LO, Lannfelt L: Cerebrospinal fluid levels of alpha-secretase-cleaved soluble amyloid precursor protein mirror cognition in a Swedish family with Alzheimer disease and a gene mutation. *Arch Neurol* 1997, **54**(5):641–644.
21. Sennvik K, Fastbom J, Blomberg M, Wahlund LO, Winblad B, Benediktz E: Levels of alpha- and beta-secretase cleaved amyloid precursor protein in the cerebrospinal fluid of Alzheimer's disease patients. *Neurosci Lett* 2000, **278**(3):169–172.
22. Colciaghi F, Borroni B, Pastorino L, Marcello E, Zimmermann M, Cattabeni F, Padovani A, Di Luca M: [alpha]-Secretase ADAM10 as well as [alpha]APPs is reduced in platelets and CSF of Alzheimer disease patients. *Mol Med* 2002, **8**(2):67–74.
23. Olsson A, Hoglund K, Sjogren M, Andreasen N, Minthon L, Lannfelt L, Buerger K, Moller HJ, Hampel H, Davidsson P, et al: Measurement of alpha- and beta-secretase cleaved amyloid precursor protein in cerebrospinal fluid from Alzheimer patients. *Exp Neurol* 2003, **183**(1):74–80.
24. Perneczky R, Tsolakidou A, Arnold A, Diehl-Schmid J, Grimmer T, Forstl H, Kurz A, Alexopoulos P: CSF soluble amyloid precursor proteins in the diagnosis of incipient Alzheimer disease. *Neurology* 2011, **77**(1):35–38.
25. Gabelle A, Roche S, Geny C, Bennis K, Labauge P, Tholance Y, Quadrio I, Tiers L, Gor B, Chaullet C, et al: Correlations between soluble alpha/beta forms of amyloid precursor protein and Abeta38, 40, and 42 in human cerebrospinal fluid. *Brain Res* 2010, **1357**:175–183.
26. Szekeres PG, Leong K, Day TA, Kingston AE, Karran EH: Development of homogeneous 384-well high-throughput screening assays for Abeta1-40 and Abeta1-42 using AlphaScreen technology. *J Biomol Screen* 2008, **13**(2):101–111.
27. De Strooper B, Simons M, Multhaup G, Van Leeuwen F, Beyreuther K, Dotti CG: Production of intracellular amyloid-containing fragments in hippocampal neurons expressing human amyloid precursor protein and protection against amyloidogenesis by subtle amino acid substitutions in the rodent sequence. *EMBO J* 1995, **14**(20):4932–4938.
28. Perret-Liaudet A, Pelpel M, Tholance Y, Dumont B, Vanderstichele H, Zorzi W, Elmoualij B, Schraen S, Moreaud O, Gabelle A, et al: Cerebrospinal Fluid Collection Tubes: A Critical Issue for Alzheimer Disease Diagnosis. *Clin Chem* 2012, **58**(4):787–789.
29. Pica-Mendez AM, Tanen M, Dallob A, Tanaka W, Laterza OF: Nonspecific binding of Abeta42 to polypropylene tubes and the effect of Tween-20. *Clin Chim Acta* 2010, **411**(21–22):1833.
30. Paquet C, Latour F, Saulnier I, Hanon O: [Multicenter study on lumbar puncture indication, clinical practice and feasibility]. *Rev Neurol Paris* 2012, **168**(1):28–32.
31. Hung AY, Haass C, Nitsch RM, Qiu WQ, Citron M, Wurtman RJ, Growdon JH, Selkoe DJ: Activation of protein kinase C inhibits cellular production of the amyloid beta-protein. *J Biol Chem* 1993, **268**(31):22959–22962.
32. Buxbaum JD, Liu KN, Luo Y, Slack JL, Stocking KL, Peschon JJ, Johnson RS, Castner BJ, Cerretti DP, Black RA: Evidence that tumor necrosis factor alpha converting enzyme is involved in regulated alpha-secretase cleavage of the Alzheimer amyloid protein precursor. *J Biol Chem* 1998, **273**(43):27765–27767.
33. Postina R: Activation of alpha-secretase cleavage. *J Neurochem* 2012, **120**(Suppl 1):46–54.
34. Kojro E, Postina R, Buro C, Meiringer C, Gehrig-Burger K, Fahrenholz F: The neuropeptide PACAP promotes the alpha-secretase pathway for processing the Alzheimer amyloid precursor protein. *FASEB J* 2006, **20**(3):512–514.
35. Levites Y, Amit T, Mandel S, Youdim MB: Neuroprotection and neurorescue against Abeta toxicity and PKC-dependent release of nonamyloidogenic soluble precursor protein by green tea polyphenol (–)-epigallocatechin-3-gallate. *FASEB J* 2003, **17**(8):952–954.
36. Obregon DF, Rezaei-Zadeh K, Bai Y, Sun N, Hou H, Ehrhart J, Zeng J, Mori T, Arendash GW, Shytle D, et al: ADAM10 activation is required for green tea (–)-epigallocatechin-3-gallate-induced alpha-secretase cleavage of amyloid precursor protein. *J Biol Chem* 2006, **281**(24):16419–16427.
37. Caporaso GL, Gandy SE, Buxbaum JD, Ramabhadran TV, Greengard P: Protein phosphorylation regulates secretion of Alzheimer beta/A4 amyloid precursor protein. *Proc Natl Acad Sci U S A* 1992, **89**(7):3055–3059.
38. Oddo S, Caccamo A, Shepherd JD, Murphy MP, Golde TE, Kaye R, Metherate R, Mattson MP, Akbari Y, LaFerla FM: Triple-transgenic model of Alzheimer's disease with plaques and tangles: intracellular Abeta and synaptic dysfunction. *Neuron* 2003, **39**(3):409–421.
39. Simons M, de Strooper B, Multhaup G, Tienari PJ, Dotti CG, Beyreuther K: Amyloidogenic processing of the human amyloid precursor protein in primary cultures of rat hippocampal neurons. *J Neurosci* 1996, **16**(3):899–908.
40. Chasseigneaux S, Dinc L, Rose C, Chabret C, Coulpier F, Topilko P, Mauder G, Allinquant B: Secreted amyloid precursor protein beta and secreted amyloid precursor protein alpha induce axon outgrowth in vitro through Egr1 signaling pathway. *PLoS One* 2011, **6**(1):e16301.
41. Lafont F, Rouget M, Rousselet A, Valenza C, Prochiantz A: Specific responses of axons and dendrites to cytoskeleton perturbations: an in vitro study. *J Cell Sci* 1993, **104**(Pt2):433–443.
42. McKhann G, Drachman D, Folstein M, Katzman R, Price D, Stadlan EM: Clinical diagnosis of Alzheimer's disease: report of the NINCDS-ADRDA Work Group under the auspices of Department of Health and Human Services Task Force on Alzheimer's Disease. *Neurology* 1984, **34**(7):939–944.
43. Fischer DF, Hol EM, Hobo B, Van Leeuwen FW: Alzheimer-associated APP +1 transgenic mice: Frameshift beta-amyloid precursor protein is secreted in cerebrospinal fluid without inducing neuropathology. *Neurobiol Aging* 2006, **27**(10):1445–1450.

doi:10.1186/1471-2202-13-84

Cite this article as: Rose et al.: New highly sensitive rodent and human tests for soluble amyloid precursor protein alpha quantification: preclinical and clinical applications in Alzheimer's disease. *BMC Neuroscience* 2012 **13**:84.