



## Noise in urban areas: How does the definition of "neighborhood" impact exposure assessment?

Frédéric Mauny, Quentin Tenailleau, Sophie Pujol, Anne-Laure Parmentier, Hélène Houot, Nadine Bernard

### ► To cite this version:

Frédéric Mauny, Quentin Tenailleau, Sophie Pujol, Anne-Laure Parmentier, Hélène Houot, et al.. Noise in urban areas: How does the definition of "neighborhood" impact exposure assessment?. 45th International Congress and Exposition on Noise Control Engineering (INTER-NOISE 2016), Aug 2016, Hambourg, Germany. 2016, 45th International Congress and Exposition on Noise Control Engineering (INTER-NOISE 2016). <<http://www.internoise2016.org/>>. <hal-01360418>

**HAL Id: hal-01360418**

**<https://hal.archives-ouvertes.fr/hal-01360418>**

Submitted on 7 Sep 2016

**HAL** is a multi-disciplinary open access archive for the deposit and dissemination of scientific research documents, whether they are published or not. The documents may come from teaching and research institutions in France or abroad, or from public or private research centers.

L'archive ouverte pluridisciplinaire **HAL**, est destinée au dépôt et à la diffusion de documents scientifiques de niveau recherche, publiés ou non, émanant des établissements d'enseignement et de recherche français ou étrangers, des laboratoires publics ou privés.



## Noise in urban areas: How does the definition of "neighborhood" impact exposure assessment?

Frédéric MAUNY <sup>1</sup> a,b ; Quentin TENAILLEAU <sup>2</sup> c ; Sophie PUJOL <sup>3</sup> a,b ; Anne-Laure  
PARMENTIER <sup>4</sup> a,b ; Hélène HOUOT <sup>5</sup> d ; Nadine BERNARD <sup>6</sup> a,d

a Laboratoire Chrono-environnement, UMR6249, Centre National de la Recherche Scientifique, Université de  
Bourgogne/Franche-Comté, France

b Centre de méthodologie clinique, Centre hospitalier régional universitaire de Besançon, France

c Laboratoire LADYSS, UMR7533, Université Paris Ouest Nanterre la Défense, France

d Laboratoire ThéMA, UMR6049, Centre National de la Recherche Scientifique, Université de  
Bourgogne/Franche-Comté, France

### ABSTRACT

Environmental epidemiological studies commonly quantify subjects' noise exposure level in their neighborhood. How this neighborhood is defined can vary across studies, leading to different approaches whose impacts on exposure levels remain unclear. This article examines the impact of the neighborhood's definition on environmental noise exposure estimates.  $L_{Aeq,24h}$  exposures in the vicinity of 10,825 residential buildings were estimated using a high-definition noise map, built on a middle-sized French city. Various definitions of neighborhood (address point, façade, buffers, and official zoning) were used to produce different exposure estimates. Influence of urban environmental factors was analyzed using multilevel modeling. The results showed a significant increase of the exposure estimates (+3.9 dB) and a significant decrease of the variability, when the sample size of the considered neighborhood increased ( $P < 0.01$ ). The difference between the estimates from the 50-m-radius buffers and the 400-m-radius buffers ranged across buildings between -9.4 and +22.3 dB. This variation was influenced by urban environmental characteristics ( $P < 0.01$ ). Furthermore, the same approach was conducted individually considering assessments of exposure to road traffic noise railway noise and two atmospheric pollutants ( $NO_2$  and  $PM_{10}$ ). The results highlight the need in further exposure and/or epidemiological studies to carefully consider neighborhood definition and environmental composition.

Keywords: Noise, environmental exposure model, air pollution, neighborhood, GIS, exposure assessment.

---

<sup>1</sup> frederic.mauny@univ-fcomte.fr

<sup>2</sup> quentin.tenailleau@u-paris10.fr

<sup>3</sup> Sophie.pujol@univ-fcomte.fr

<sup>4</sup> alparmentier@chu-besancon.fr

<sup>5</sup> helene.houot@univ-fcomte.fr

<sup>6</sup> nadine.bernard@univ-fcomte.fr

## 1. INTRODUCTION

Noise is a ubiquitous environmental pollutant with well-documented adverse effects on hearing. Exposure to noise can also cause non-auditory effects, including hypertension, cardiovascular disease, annoyance, or sleep disturbance, and can impair some cognitive processes (1-5). In urban areas, the density of traffic, common source of noise emissions and air pollutants, combined with a high number of residents, constitute optimal conditions for a multi environmental exposure. The few existing studies quantifying multi-exposure to noise and air pollution have indeed shown a moderate correlation, and results are influenced by the methods used to assess exposure (measurements, models, indirect proxy such as distance to main roads).

Several indicators can be used to describe noise exposure. The most commonly used is the equivalent continuous sound pressure level ( $L_{Aeq}$ , in dB). Most epidemiological studies that have focused on the effect of noise on health have been based on theoretical models that used traffic counts and patterns of sound propagation in the environment to assess outdoor long-term sound levels (6-9). Some studies considered noise measurement in front of residences to accurately reflect the outdoor noise level (1, 10).

How this neighborhood is defined can vary across studies, leading to different approaches whose impacts on exposure levels remain unclear. This article examines the impact of the neighborhood's definition on environmental noise exposure estimates, and compare these results with others ubiquitous air pollutants:  $NO_2$  and  $PM_{10}$ .

## 2. POPULATION AND METHODS

### 2.1 The study site: the city of Besançon

Besançon is the capital of the French administrative region Franche-Comté, located in eastern. It is a medium-sized city of approximately 118,000 inhabitants (11), with a 65 km<sup>2</sup> urban area fitting the city boundaries. Road traffic is the main source of environmental noise and air pollution, and no other infrastructures that produce significant amounts of pollution, such as airports or motorways, are present in the city.

### 2.2 Noise pollution model computation

The environmental noise prediction model used by Pujol *et al* (12) allowed to estimate environmental noise levels in accordance with the Environmental Noise Directive (END). Environmental inputs were integrated in the noise-modeling software MITHRA-SIG© (V2), developed by the French scientific and technical center for building (CSTB) and the Geomod society. These inputs were topography, road and building data from the French National Geographical Institute database (BD TOPO® 2006) and meteorological data from the French National Meteorological Service. Road traffic, rail traffic, pedestrian precinct, and water

fountains were included as noise sources. Road traffic data were obtained for three time periods: day (06:00 to 18:00), evening (18:00 to 22:00) and night (22:00 to 06:00).

### **2.3 Air pollution model computation**

The NO<sub>2</sub> levels were calculated using a two-step method (13). First, the daily averaged annual road-traffic emissions were calculated using Circul'Air, software developed on the basis of the COPERT4 European standard methodology (14). In the meantime, pollution from heating and industrial emissions and long-range sources were evaluated for each census block using the ATMO Franche-Comté databases. Second, all aforesaid inputs, including air pollutant emissions, were introduced in ADMS-Urban©, pollution diffusion software developed in accordance with the WHO guidelines by the Cambridge Environmental Research Consultants company (15).

### **2.4 Noise and NO<sub>2</sub> pollution maps**

Both pollution levels were displayed in ESRI arcGIS© (V9.3.1) following a common 4 m<sup>2</sup> (2 m x 2 m) raster grid with each pixel giving both the air and a noise pollution level at 2 m above ground for the entire city. NO<sub>2</sub> was expressed in microgram/m<sup>3</sup> (µg/m<sup>3</sup>) and noise in decibels (dB(A)) rounded to the nearest decibel unit. The daily equivalent A weighted sound level (L<sub>Aeq,24h</sub>) was used. The 10 825 residential buildings located at least 400 m inside the city border were chosen as a basis for exposure assessment. This 400-m exclusion zone corresponds to the largest buffer radius and aims to limit the potential boundary effect.

### **2.5 Model validation**

Modeled noise and air pollution levels were validated using measurement data obtained from past field-campaigns. The noise model validation was based on a noise measurement campaign conducted in front of 44 dwellings (12) (spearman rho=0.81, p<0.01). The NO<sub>2</sub> model validation was based on four, two-week-long pollution level field surveys conducted by ATMO Franche-Comté on 200 locations across the city during autumn and winter 2010 as well as spring and summer 2011 (spearman rho=0.80, p<0.01) (16).

### **2.6 Statistical analysis**

The exposure indicators were compared using Friedman's test followed by post-hoc Wilcoxon tests for pairwise comparison and the Siegel & Castellan adjustment was applied. The relationships between the mean and variance of the noise indicators and the surface of the sampled areas were tested using fixed and random parameters in a multilevel linear model. The relationship between urban environment characteristics and pollution assessments changes was then focused on only one exposure indicator difference: the difference was computed by subtracting the 50-m buffer exposure indicator value from the 400-m buffer noise one ( $\Delta_{400-50} = L_{Aeq24H-400m} - L_{Aeq24H-50m}$ ) for each building. The relationship between the  $\Delta_{400-50}$  and the urban environment characteristics was analyzed using multilevel linear modeling. Statistical analysis was

carried out using R-statistics software (V2.15.2) and MLwiN (V2.25). The significance level was set to 0.05.

### 3. RESULTS

Among the 10,875 study buildings, 38.5% were located at the vicinity of major road (roads with more than 5,000 vehicles per day), 4.7% were located at the vicinity of major rail transport infrastructures (railways with more than 50 trains per day). Only 1.8% of the buildings were located at the vicinity of both major roads and major railways (Figure 1).

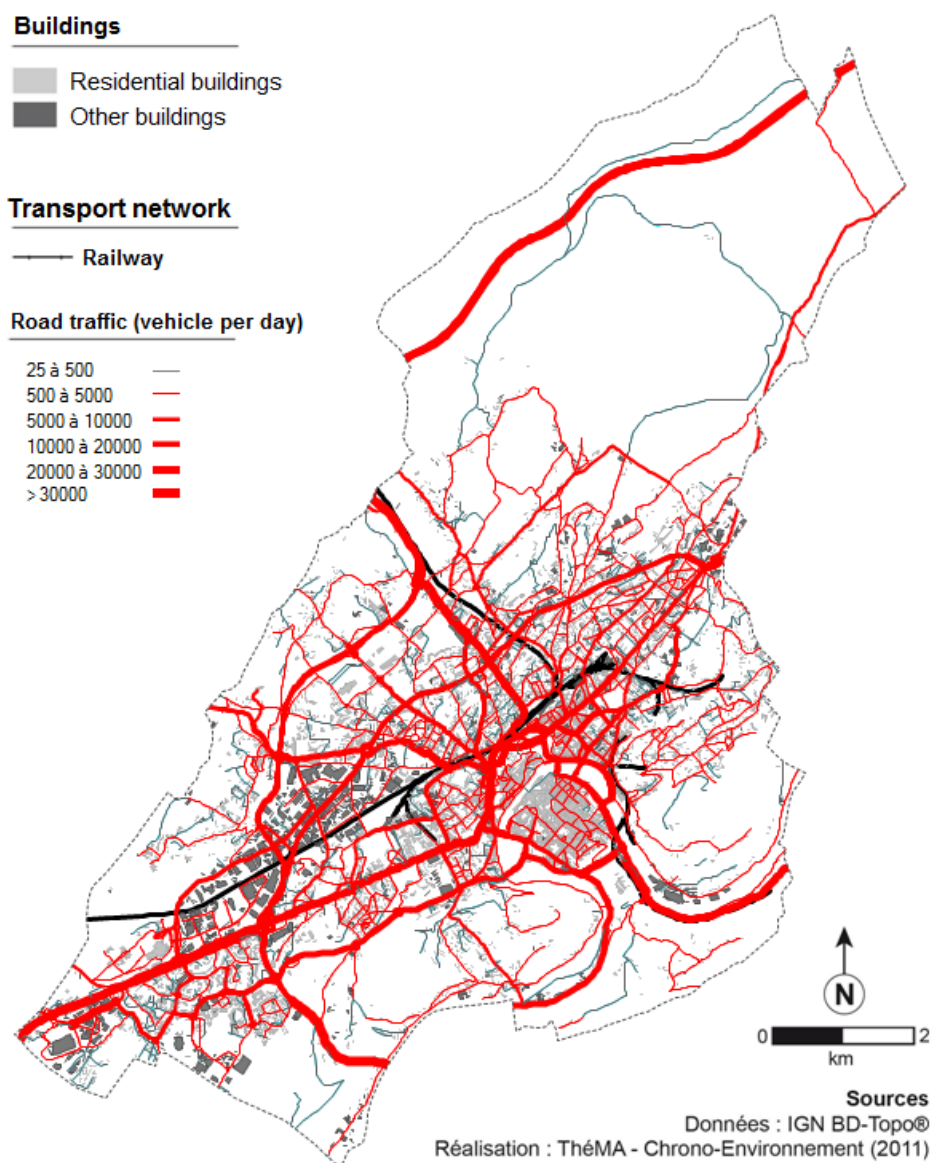


Figure 1 – The city of Besancon: buildings and transport networks.

### 3.1 Noise

The ten noise exposure assessment distributions are presented in Table 1 and Figure 2. The means range from 49.6 dB to 54.2 dB. They are significantly different from each other ( $P < 0.01$ ), except for the address points and the 100-m buffers samples ( $P = 0.46$ ). The standard deviations range from 7.1 to 4.9. For the façade and buffer techniques, the noise assessments significantly increase when the sampled surface increases, while the noise indicator variances significantly decrease (all  $P < 0.01$ ).

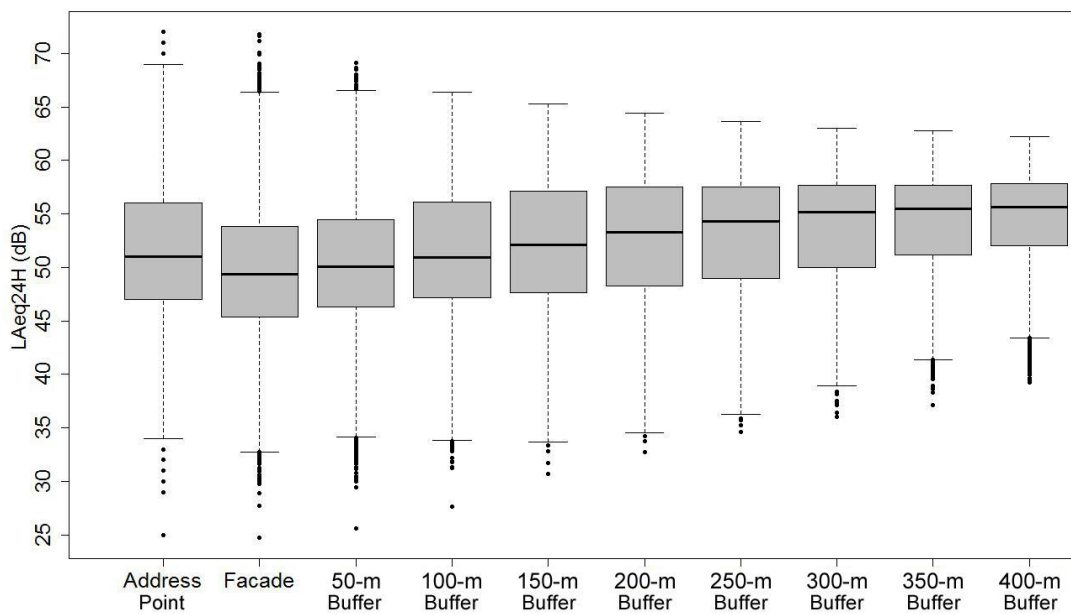


Figure 2 - The ten noise exposure assessment distributions  
(average  $L_{Aeq,24h}$ ) ( $n=10\ 825$ ), from (16)

The Euclidean distance between the address point and its corresponding building was 15.5 m in average, and ranged between 1.2 m and 368 m.

The histograms of the exposure assessments for the 50-m and the 400-m buffers, and the  $\Delta_{400-50}$  exposure assessments are presented in Figure 3. The  $\Delta_{400-50}$  ranges between -9.4 dB and +22.3 dB, with a mean variation of +3.9 dB. Two thirds of the buildings presented a  $\Delta_{400-50}$  higher than |3 dB|: 56.5% over +3 dB ( $n=5\ 873$ ) and 9.8% under -3 dB ( $n=1\ 019$ ).

Table 1 - Average of noise exposure assessments ( $L_{Aeq,24h}$  (in dB))  
according to the surface area of exposure techniques (n=10 825)

	Address Points	6-m Façade	50-m Buffer	100-m Buffer	150-m Buffer	200-m Buffer	250-m Buffer	300-m Buffer	350-m Buffer	400-m Buffer
<b>Sampled surface</b>										
Mean sampled surface (m <sup>2</sup> )	4	566	7, 833	31,375	70,624	125,581	196,247	282,618	384,700	502, 488
Mean noise modeled surface (m <sup>2</sup> )*	4	507	5,734	24,120	55,376	99,916	157,645	227,374	313,033	410,203
<b><math>L_{Aeq24H}</math></b>										
Mean	51.0	49.6	50.4	51.4	52.1	52.7	53.2	53.6	53.9	54.2
SD <sup>†</sup>	7.1	6.5	6.3	6.1	5.9	5.8	5.6	5.3	5.1	4.9
Min	25.0	24.7	25.6	27.6	30.7	32.7	34.6	36.0	37.1	39.2
Max	72.0	71.8	69.1	66.4	65.3	64.4	63.6	63.0	62.7	62.2
1 <sup>st</sup> quartile	47.0	45.4	46.3	47.1	47.7	48.3	49.0	50.0	51.2	52.0
Median	51.0	49.4	50.0	50.9	52.1	53.3	54.3	55.1	55.5	55.6
3 <sup>rd</sup> quartile	55.0	53.8	54.5	56.1	57.1	57.5	57.6	57.7	57.7	57.8

\* Mean noise modeled surface = mean sampled surface - built surface in the sampled area. †Standard Deviation.

(from (16))

Not surprisingly, the spatial distributions buildings associated with highest 50 m exposure values ( $\geq 55$  dB) were located along the main roadways. Conversely, when considering the 400-m indicator, this specific localization of buildings associated with the highest values along the main roadways is no longer observed, but spatial aggregates of medium noise exposition can be noted in the urban fringe. The spatial distributions of the  $\Delta_{400-50}$  are presented in Figure 4a. The buildings associated to a  $\Delta_{400-50}$  under -3 dB appeared to be localized very close to the main roadways.



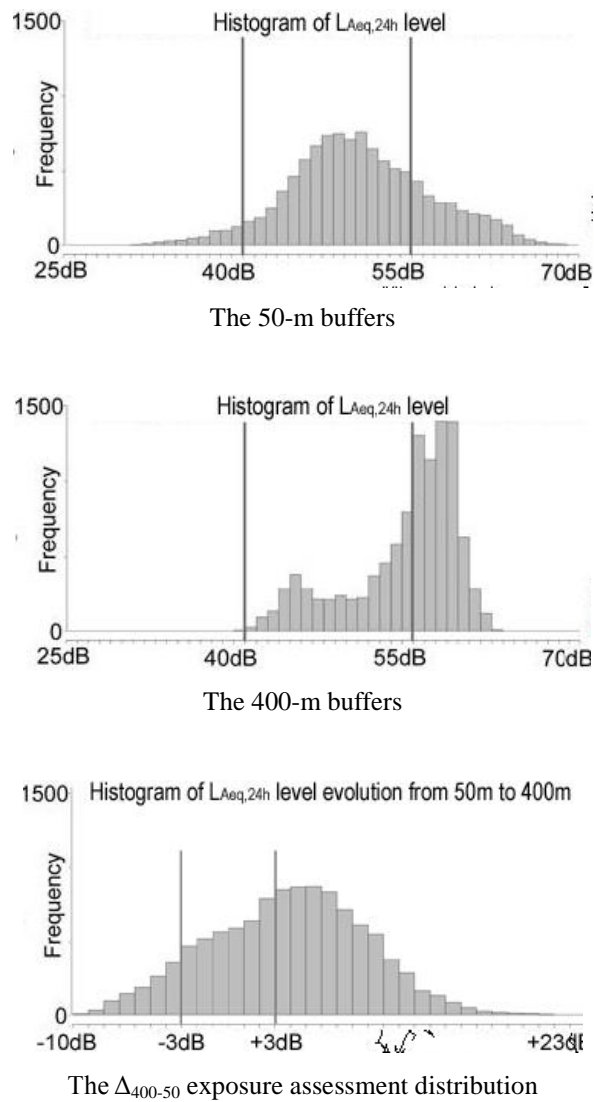
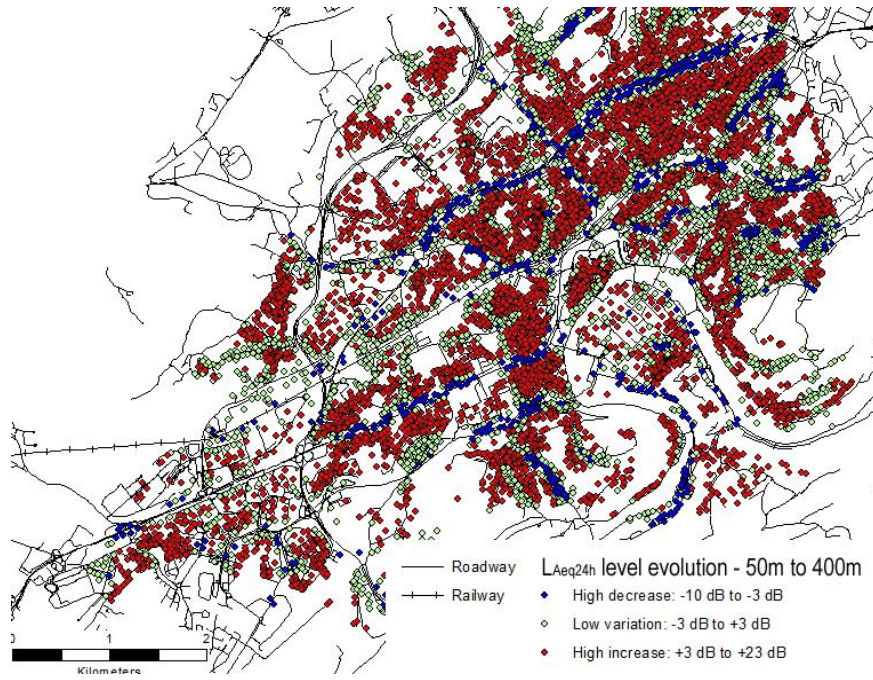


Figure 3 - The 50-m and the 400-m buffers, and the  $\Delta_{400-50}$  exposure assessment distribution.

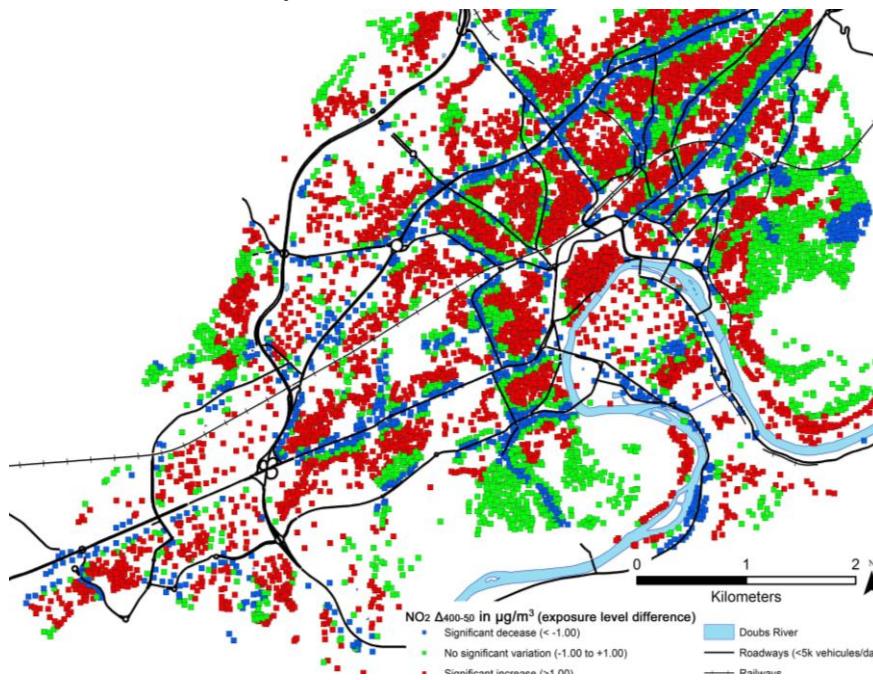
When the neighborhood surface increased, distance to the road, urban type and population density were significantly, positively and independently associated with the  $\Delta_{400-50}$  noise level observed.

### 3.2 Air pollution

The air pollution levels were low for all pollutants and showed low heterogeneity both within samples and between samples (Figure 4). The  $\text{NO}_2$  values presented the highest heterogeneity ( $p < 10^{-3}$ ). Pair wise comparisons of the ten means demonstrated the equivalency of the pollutant assessments. All of the 95% confidence intervals of the mean differences were totally included in the chosen zones of equivalence of  $[-1.0 \mu\text{g}/\text{m}^3; +1.0 \mu\text{g}/\text{m}^3]$ .



4a.  $L_{Aeq,24h} \Delta_{400-50}$  level evolution (from (16))



4b.  $NO_2 \Delta_{400-50}$  level evolution

Figure 4 - The  $L_{Aeq,24h}$  and  $NO_2 \Delta_{400-50}$  spatial distribution (from (13)).

Multivariate analysis conducted to the same results with the two air pollutants than with the noise exposure assessments. The spatial distributions of the  $\Delta_{400-50}$  air pollutants were also comparable to that of noise (Figure 4b), the buildings associated with a  $\Delta_{400-50}$  under  $-1 \mu g/m^3$  appeared to be localized very close to the main roadways.

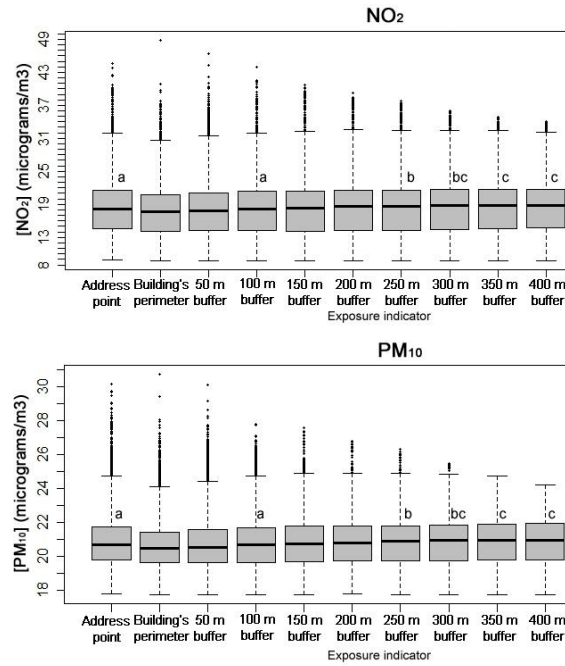


Figure 4 - The ten noise exposure assessment distributions  
(average NO<sub>2</sub> and PM<sub>10</sub>) (n=10 825) (from (13))

#### 4. DISCUSSION

The recent development of powerful noise mapping softwares allows assessing the exposure to environmental noise at the scale of an agglomeration. However, the results highlight the real influence of the definition of the neighbourhood on the noise exposure assessment. When considering an increasing size of the considered space, the noise exposure assessment is increasing and the variability is decreasing. The impact identified on noise level was also identified on two air pollutants: NO<sub>2</sub> and PM<sub>10</sub>.

Most studies of urban noise exposure attempt to highlight any impact on health and concentrate on high exposure levels (9, 17, 18), mainly near airports or roads with heavy traffic. However, our results demonstrate that a low proportion of facades were exposed to high noise levels. The city of Besançon did not contain an important airport or other particularly noisy infrastructure. The main noise source was ground transport, but no motorways crossed the inhabited districts. The results were observed in a medium-sized European city, which is defined by a population size between 100,000 and 500,000 inhabitants (19). Medium-sized cities are highly represented in terms of demography, accounting for more than 44 % of the European population (20). However, they tend to be less studied than the bigger cities (21, 22). Current efforts to consistently lower legal threshold limit values should lead major cities' air pollution levels to decline to the levels currently observed in medium-sized cities. This makes today's medium-sized cities of the highest importance for today and future public health studies.

## 5. CONCLUSIONS

Understanding the actual exposure of urban citizens is one of the biggest challenges of the next decade. Depending on the observation scale, the definition of the living neighborhood has a varying influence on the assessed exposure. These results applied to noise and air pollution environmental exposure assessment.

## ACKNOWLEDGEMENTS

The authors would like to thank the city services, the urban community of Besançon (CAGB), the Besançon Urban Development Agency (AUDAB) and the Departemental Public Works Directorate (DDE) for their technical support. Quentin Tenailleau was a Ph.D. student supported by a grant from the city of Besançon.

## REFERENCES

1. Belojevic G, Jakovljevic B, Stojanov V, Paunovic K, Ilic J. Urban road-traffic noise and blood pressure and heart rate in preschool children. *Environment International* 2008;34:226-231. doi:16/j.envint.2007.08.003
2. Miedema HM, Vos H. Exposure-response relationships for transportation noise. *J. Acoust. Soc. Am* 1998;104:3432-3445.
3. Muzet A. Environmental noise, sleep and health. *Sleep Medicine Reviews* 2007;11:135-142. doi:16/j.smr.2006.09.001
4. Passchier-Vermeer W, Passchier WF. Noise exposure and public health. *Environ Health Perspect* 2000;108:123-131.
5. Babisch W. Guest Editorial: Noise and Health. *Environ Health Perspect* 2005;113:A14-A15.
6. Clark C, Martin R, van Kempen E, Alfred T, Head J, Davies HW, et al. Exposure-effect relations between aircraft and road traffic noise exposure at school and reading comprehension: the RANCH project. *Am. J. Epidemiol* 2006;163:27-37. doi:10.1093/aje/kwj001
7. de Kluizenaar Y, Gansevoort RT, Miedema HME, de Jong PE. Hypertension and road traffic noise exposure. *J. Occup. Environ. Med* 2007;49:484-492. doi:10.1097/JOM.0b013e318058a9ff
8. Murphy E, King EA, Rice HJ. Estimating human exposure to transport noise in central Dublin, Ireland. *Environment International* 2009;35:298-302. doi:16/j.envint.2008.07.026
9. Matsui T, Stansfeld S, Haines M, Head J. Children's cognition and aircraft noise exposure at home--the West London Schools Study. *Noise Health* 2004;7:49-58.
10. Hong J, Kim J, Lim C, Kim K, Lee S. The effects of long-term exposure to railway and road traffic noise on subjective sleep disturbance. *J. Acoust. Soc. Am* 2010;128:2829-2835. doi:10.1121/1.3493437
11. National Institute of the Statistics and the Economic Studies, 2009. Results of the Population Census -

- 2009 [WWW Document]. URL <http://www.recensement.insee.fr/basesInfracommunales.action> (accessed 11.1.13).
12. Pujol, S., Houot, H., Antoni, J. P. & Mauny, F. Linking traffic and noise models to explore spatio-temporal distribution of noise pollution: an example in Besançon (France). in *Int. Inst. Acoust. Vib.* (2012)
  13. Tenailleau QM, Mauny F, Joly D, François S, Bernard N. Air pollution in moderately polluted urban areas: How does the definition of "neighborhood" impact exposure assessment? *Environ Pollut.* 2015 ;11;206:437-448.
  14. EMEP/EEA, 2009. EMEP/EEA air pollutant emission inventory guidebook 2009. Technical guidance to prepare national emission inventories. European Monitoring and Evaluation Programme & European Environment Agency, Luxemburg (Luxemburg).
  15. Cambridge Environmental Research Consultants, 2014. ADMS-Urban presentation [WWW Document]. ADMS-Urban Present. URL <http://www.cerc.co.uk/environmental-software/ADMS-Urban-model.html> (accessed 10.9.14).
  16. Tenailleau QM, Bernard N, Pujol S, Houot H, Joly D, Mauny F. Assessing residential exposure to urban noise using environmental models: does the size of the local living neighborhood matter? *J Expo Sci Environ Epidemiol.* 2015;25(1):89-96.
  17. Stansfeld S, Berglund B, Clark C, Lopez-Barrio I, Fischer P, Öhrström E, et al. Aircraft and road traffic noise and children's cognition and health: a cross-national study. *The Lancet* 2005;365:1942-1949. doi:16/S0140-6736(05)66660-3
  18. Babisch W, Neuhauser H, Thamm M, Seiwert M. Blood pressure of 8-14 year old children in relation to traffic noise at home--results of the German Environmental Survey for Children (GerES IV). *Sci. Total Environ* 2009;407:5839-5843.
  19. Bobby 1999 Boddy, M., 1999. Geographical economics and urban competitiveness: a critique. *Urban Stud.* 36, 811–842.
  20. Giffinger, R., Fertner, C., Kramar, H., Meijers, E., 2007. City-ranking of European medium-sized cities. *Cent. Reg. Sci. Vienna UT.*
  21. Ehrlich, P.R., Holdren, J.P., 1974. Human Population and the Global Environment: Population growth, rising per capita material consumption, and disruptive technologies have made civilization a global ecological force. *Am. Sci.* 62, 282–292.
  22. Selden, T.M., Song, D., 1994. Environmental Quality and Development: Is There a Kuznets Curve for Air Pollution Emissions? *J. Environ. Econ. Manag.* 27, 147 – 162.