

6-10-2016

# Using a SWIFT Score Guided Time Out to Reduce Medical ICU Readmission Rates

Justin Herman, MD

*Thomas Jefferson University Hospital, justin.herman@jefferson.edu*

Andrew Dargan, MD

*Department of Medicine, Thomas Jefferson University Hospital, andrew.dargan@jefferson.edu*

John Madara, MD

*Thomas Jefferson University Hospital, john.madara@jefferson.edu*

Michael Baram, MD

*Thomas Jefferson University Hospital, Michael.Baram@jefferson.edu*

Bharat K. Awsare, M.D., FCCP

*Thomas Jefferson University Hospital, Bharat.Awsare@jefferson.edu*Follow this and additional works at: <http://jdc.jefferson.edu/patientsafetyposters>Part of the [Medicine and Health Sciences Commons](#)

## Recommended Citation

Herman, MD, Justin; Dargan, MD, Andrew; Madara, MD, John; Baram, MD, Michael; and Awsare, M.D., FCCP, Bharat K., "Using a SWIFT Score Guided Time Out to Reduce Medical ICU Readmission Rates" (2016). *House Staff Quality Improvement and Patient Safety Posters*. Poster 17.

<http://jdc.jefferson.edu/patientsafetyposters/17>

This Article is brought to you for free and open access by the Jefferson Digital Commons. The Jefferson Digital Commons is a service of Thomas Jefferson University's [Center for Teaching and Learning \(CTL\)](#). The Commons is a showcase for Jefferson books and journals, peer-reviewed scholarly publications, unique historical collections from the University archives, and teaching tools. The Jefferson Digital Commons allows researchers and interested readers anywhere in the world to learn about and keep up to date with Jefferson scholarship. This article has been accepted for inclusion in House Staff Quality Improvement and Patient Safety Posters by an authorized administrator of the Jefferson Digital Commons. For more information, please contact: [JeffersonDigitalCommons@jefferson.edu](mailto:JeffersonDigitalCommons@jefferson.edu).





# Using a SWIFT Score Guided Time Out to Reduce Medical ICU Readmission Rates

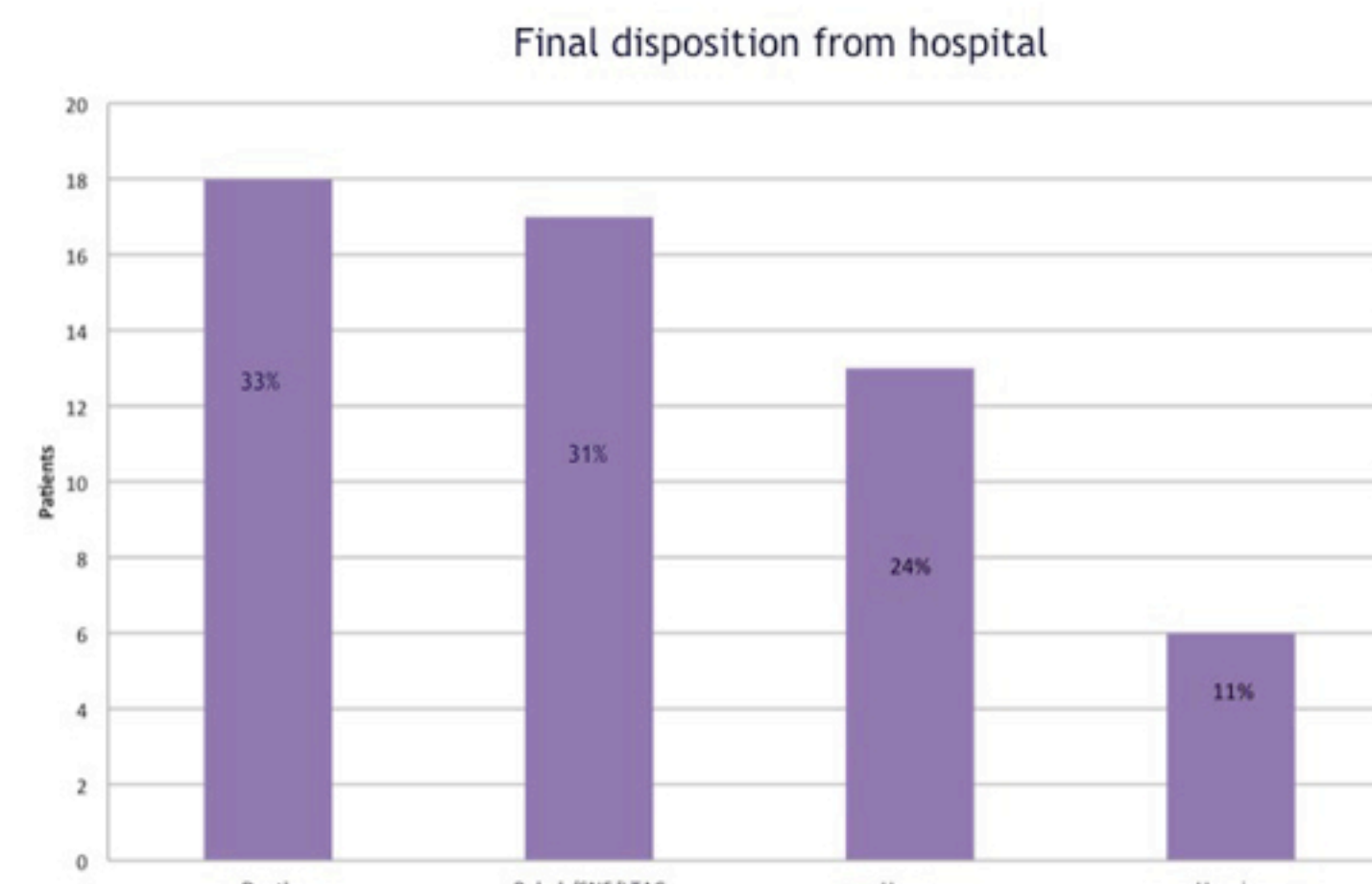
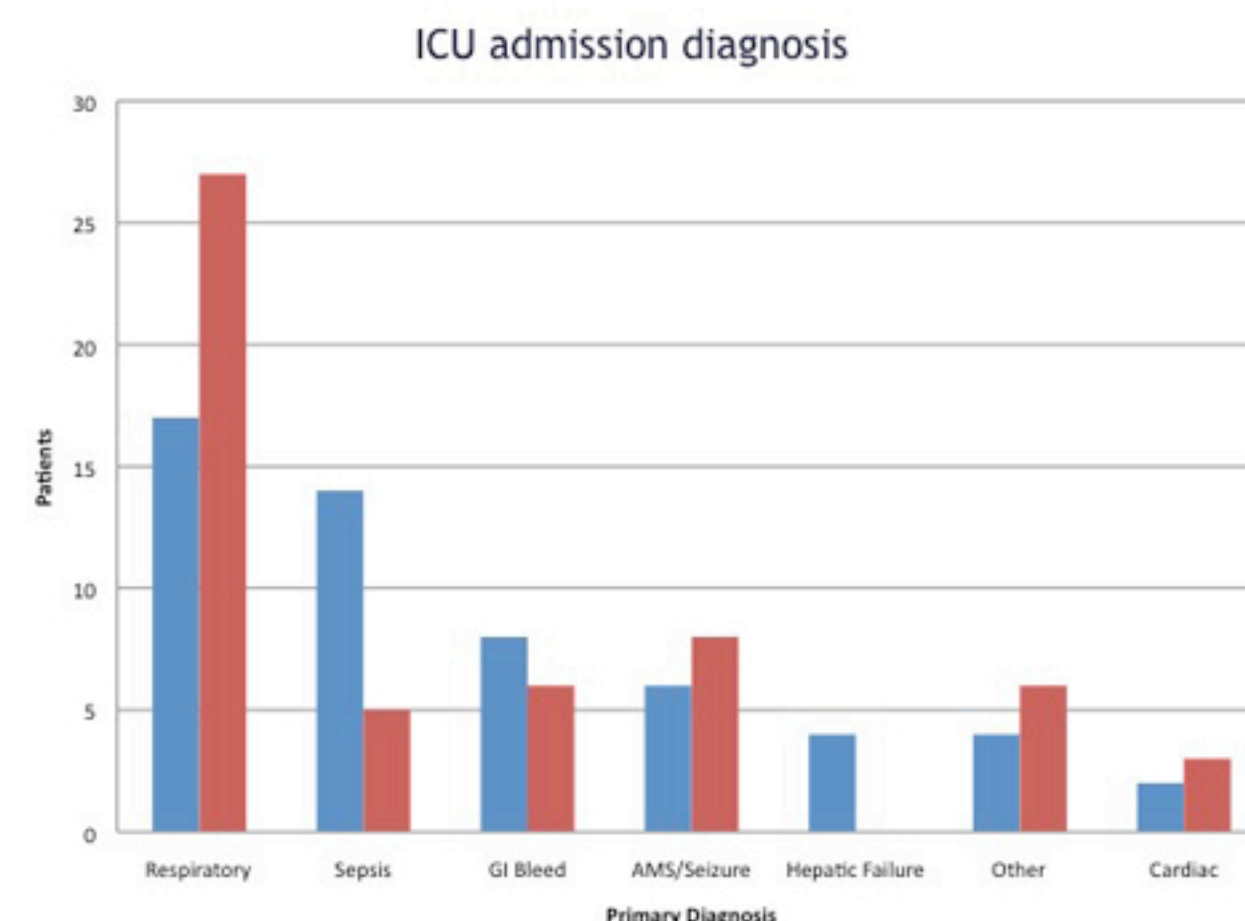
Team Members: Justin Herman MD, Andrew Dargan MD, and John Madara MD  
Faculty Mentors: Michael Baram MD and Bharat Awsare MD

## BACKGROUND

Readmissions to the ICU are associated with a significantly higher rate of mortality and hospital length of stay, resulting in a much higher cost of patient care. Previous studies have demonstrated length of stay twice as long for those readmitted to the ICU and a mortality rate up to 10x higher than those not readmitted.<sup>1</sup> Other studies demonstrated an ICU readmission rate between 2-10% of all patients transferred out of the ICU.<sup>2</sup> Our goal was to define, characterize, and analyze the patients that were readmitted into the medical ICU in hopes of identifying patients that may be high risk for readmission to the ICU during their hospital stay.

## CURRENT PERFORMANCE

Of the 2353 patients admitted to the MICU during a 17 month period, 55 patients (2.3%) were identified as being readmitted within 72 hours of transfer from the medical ICU.



## AIM

For patients admitted to the medical ICU over an additional period of 17 months, our goal is to reduce the rate of ICU readmissions within 72 hours of transfer out of the ICU to less than 2%. This will as a result reduce the costs of care, length of stay, and in-hospital mortality rates for these patients.

## PROPOSED INTERVENTION

The Stability and Workload Index for Transfer (SWIFT) Score is a validated model for predicting unplanned ICU readmissions. SWIFT Scores range from 0-65, and a score >15 indicates a high risk of ICU readmission (50% sens, 85% specif).<sup>3</sup> Communication and teamwork failures are the most frequently cited cause of adverse events in the clinical setting.<sup>4-5</sup> Pre-procedure time outs were developed to mitigate patient harm due to communication failures.<sup>6</sup> Similarly, it has been shown that non-procedural time outs at critical transition points (i.e. at admission, discharge, or change in condition) can reduce adverse events.<sup>7</sup> Transfer out of the ICU represents one of these critical transition points.

We propose a “Medical ICU Transfer Time Out” using the below form. This form is to be completed for each patient prior to transfer out of the ICU. If the SWIFT score is greater than 15, then the ICU team should reevaluate the decision to transfer the patient out of the ICU via a multidisciplinary discussion during clinical rounds prompted by the form.

**Medical ICU Transfer Timeout**

**The Stability and Workload Index for Transfer (SWIFT) Tool**

Variable	Swift Points
<b>Original source of ICU admission</b>	
Emergency department	8
Transfer from inpatient nursing unit or outside-hospital	0
<b>Total ICU length of stay (duration in days)</b>	
<2	0
2-10	1
>10	14
<b>Last measured PaO2/FiO2 ratio (during ICU admission)</b>	
>400	0
<400 and >= 150	5
<150 and >= 100	10
<100	15
<b>Glasgow Coma Scale at time of ICU discharge</b>	
>14	0
11-14	6
8-10	14
<8	24
<b>Last arterial blood gas PaCO2</b>	
<45 mm Hg	0
>45 mm Hg	5

Calculate Patient's SWIFT Score = \_\_\_\_\_

Is SWIFT Score > 15? YES or NO (circle one answer)

-If answered NO → Proceed to transfer out of medical ICU.

-If answered YES → Patient is at increased risk for readmission to medical ICU.

**STOP AND REEVALUATE PRIOR TO TRANSFER OUT OF ICU.**

Discuss appropriateness of transfer out of medical ICU with interdisciplinary team that includes patient's nurse, respiratory therapist, house staff officer, and ICU attending or fellow.

\_\_\_\_\_ After reevaluation → patient IS safe for transfer.  
 \_\_\_\_\_ Discussed with receiving floor team who agrees.  
 \_\_\_\_\_ Discussed with nursing floor manager who can manage this level of acuity.

\_\_\_\_\_ After reevaluation → patient IS NOT safe for transfer.  
 \*If not safe for transfer, please document reason why: \_\_\_\_\_

Signature of person assisting with timeout: x \_\_\_\_\_  
 Signature of attending physician of record: x \_\_\_\_\_

## Preliminary data for SWIFT Score calculations from cohort:

Of the 31 readmitted patients that had all of the SWIFT parameters, the mean SWIFT score was 21.1 (SD 12.6), which is well above the >15 score that predicts high risk of ICU readmission. Some of these readmissions, therefore, may have been preventable through the use of this SWIFT Score guided time out.

## IMPLEMENTATION PLAN

The “Medical ICU Transfer Time-Out” will be piloted on a small scale first, in the 3<sup>rd</sup> floor medical ICU, with the printed timeout form shown. Rates of ICU readmission, length of stay, cost of care, and mortality will be compared between a medical ICU using the time-out session and one not using it (3<sup>rd</sup> floor MICU vs. 5<sup>th</sup> floor MICU). If pilot study data is promising then the time out session will be expanded and utilized in all medical ICUs. Variables before and after implementation will be evaluated on a hospital wide scale.

## DISCUSSION

This time-out on high risk patients will provide a “stop and think” moment for members of the team that may lead to the discovery of preventable causes of decompensation following transfer. Challenges to implementation include that an ABG and GCS are not routinely done on all ICU patients, but are components of the SWIFT score. In our cohort, an ABG was not performed on 24 (44%) of the readmitted patients during their first ICU stay, making full SWIFT Score calculation impossible. Additionally, all members of the ICU team, including physicians, nurses, and respiratory therapists will need to buy in to the importance of completing this time-out in order to provide the best possible care for ICU patients. Discussion of this implementation plan will need to include attending physicians to mitigate any sense of lost autonomy surrounding the decision to transfer a patient out of the ICU.

## REFERENCES

- Rosenberg A, Watts, C. Patients readmitted to ICUs: a systematic review of risk factors and outcomes. *CHEST*. 2000; 118: 492-502.
- Durbin C Jr, Kopel R. A case-control study of patients readmitted to the intensive care unit. *Crit Care Med* 1993; 21:1547-1553
- Gajic et al. The Stability and Workload Index for Transfer score predicts unplanned intensive care unit patient readmission: initial development and validation. *Crit Care Med*. 2008 Mar;36(3):676-82.
- Aurora V, Johnson J, Lovinger D, Humphrey HJ, Meltzer DO. Communication failures in patient sign-out and suggestions for improvement: a critical incident analysis. *Qual Saf Health Care*. 2005;14(6):401-407.
- Sutcliffe KM, Lewton E, Rosenthal MM. Communication failures: an insidious contributor to medical mishaps. *Acad Med*. 2004;79(2):186-194.
- The Joint Commission Universal Protocol for Preventing Wrong Site, Wrong Procedure, Wrong Person Surgery. Available at: [http://www.jointcommission.org/NR/rdonlyres/E3C600EB-043B-4E86-B04E-CA4A89AD5433/0/universal\\_protocol.pdf](http://www.jointcommission.org/NR/rdonlyres/E3C600EB-043B-4E86-B04E-CA4A89AD5433/0/universal_protocol.pdf). Accessed April 1, 2016.
- Sehgal et al. Critical Conversations: A Call for a Nonprocedural “Time Out”. *J of Hospital Medicine*. 2011;6(4):225-230.