



3-2014

Single nucleotide polymorphism of SREBF-1 gene associated with an increased risk of endometrial cancer in Chinese women.

Chun-Ping Qiu

Department of Obstetrics and Gynecology, Qilu Hospital, Shandong University, Jinan, China

Qing-Tao Lv

Department of Pharmaceutical Chemistry, Shandong University of Traditional Chinese Medicine, Jinan, China

Samina Dongol

Department of Obstetrics and Gynecology, Qilu Hospital, Shandong University, Jinan, China

Chenguang Wang

Kimmel Cancer Center, Thomas Jefferson University, Chenguang.Wang@jefferson.edu

Jie Jiang

Department of Obstetrics and Gynecology, Qilu Hospital, Shandong University, Jinan, China

[Let us know how access to this document benefits you](#)

Follow this and additional works at: <http://jdc.jefferson.edu/cbfp>

 Part of the [Medical Cell Biology Commons](#)

Recommended Citation

Qiu, Chun-Ping; Lv, Qing-Tao; Dongol, Samina; Wang, Chenguang; and Jiang, Jie, "Single nucleotide polymorphism of SREBF-1 gene associated with an increased risk of endometrial cancer in Chinese women." (2014). *Department of Cancer Biology Faculty Papers*. Paper 63.
<http://jdc.jefferson.edu/cbfp/63>

This Article is brought to you for free and open access by the Jefferson Digital Commons. The Jefferson Digital Commons is a service of Thomas Jefferson University's [Center for Teaching and Learning \(CTL\)](#). The Commons is a showcase for Jefferson books and journals, peer-reviewed scholarly publications, unique historical collections from the University archives, and teaching tools. The Jefferson Digital Commons allows researchers and interested readers anywhere in the world to learn about and keep up to date with Jefferson scholarship. This article has been accepted for inclusion in Department of Cancer Biology Faculty Papers by an authorized administrator of the Jefferson Digital Commons. For more information, please contact: JeffersonDigitalCommons@jefferson.edu.

Single Nucleotide Polymorphism of SREBF-1 Gene Associated with an Increased Risk of Endometrial Cancer in Chinese Women

Chun-Ping Qiu¹*, Qing-Tao Lv²*, Samina Dongol¹, Chenguang Wang³, Jie Jiang¹*

1 Department of Obstetrics and Gynecology, Qilu Hospital, Shandong University, Jinan, P R China, **2** Department of Pharmaceutical Chemistry, Shandong University of Traditional Chinese Medicine, Jinan, P R China, **3** Departments of Cancer Biology, Stem Cell Biology and Regenerative Medicine, Kimmel Cancer Center, Thomas Jefferson University, Philadelphia, Pennsylvania, United States of America

Abstract

Aim: Elevated levels of sterol regulatory element-binding protein-1 (SREBP-1) have been found in endometrial cancer (EC), suggesting that it is essential to the development of EC. Obesity and diabetes have been established as known risk factors of EC, while SREBF-1 gene polymorphisms have also been found to be associated with obesity and type II diabetes. Therefore, we hypothesize that single nucleotide polymorphism (SNP) in SREBF-1 gene may be associated with increased risk of EC.

Method: We analyzed the sequence of SREBF-1 in tissue samples from 30 EC cases and 6 benign controls using high throughput method. Based on the primary results, we selected one SNP (rs2297508) as a genetic marker to conduct a hospital-based case-control study with 139 EC cases and 129 benign controls. The samples were examined under the microscope to determine their histopathology prior to the SNP analysis using RT-PCR.

Results: Through sequence analysis, we found 10 SNPs of SREBF-1 associated with EC, including 3 new SNPs. Fourteen percent of EC showed the rs2297508 SNP with C allele, while only 7% had the C allele was present in benign controls ($p = 0.027$, $OR = 1.983$). Additionally, the C allele was associated with cancer differentiation ($p < 0.05$) and the depth of myometrial invasion ($p < 0.05$).

Conclusion: Our study indicates that SNP (rs2297508) of SREBF-1 may serve as a genetic predisposition factor for the development of EC and screening of such genetic marker may be helpful in its early detection.

Citation: Qiu C-P, Lv Q-T, Dongol S, Wang C, Jiang J (2014) Single Nucleotide Polymorphism of SREBF-1 Gene Associated with an Increased Risk of Endometrial Cancer in Chinese Women. PLoS ONE 9(3): e90491. doi:10.1371/journal.pone.0090491

Editor: Kwang-Hyun Baik, CHA University, Republic of Korea

Received: August 24, 2013; **Accepted:** January 31, 2014; **Published:** March 10, 2014

Copyright: © 2014 Qiu et al. This is an open-access article distributed under the terms of the Creative Commons Attribution License, which permits unrestricted use, distribution, and reproduction in any medium, provided the original author and source are credited.

Funding: This study was accomplished in the cardiovascular laboratory of Qi Lu Hospital of Shandong University and was supported by grants from the National Natural Science Foundation of China (81072121, 81372808 [JJ] and 81173614 [QTL]) as well as the Science and Technology Development planning of Shandong (2011GSF12122 [XZ] and 2012G0021823 [JJ]). The funders had no role in study design, data collection and analysis, decision to publish, or preparation of the manuscript.

Competing Interests: The authors have declared that no competing interests exist.

* E-mail: qjjiangjie@sdu.edu.cn

† These authors contributed equally to this work.

Introduction

Endometrial cancer (EC) is the most common gynecological malignancy in the western world and the fourth most common cancer in women. The incidence of the EC has increased by 21% since 2008, and the mortality rate has increased significantly over the past two decades [1]. The American Cancer Society estimated 49,500 new cases and 8,200 mortalities in 2013 [2]. The etiology of EC is multifactorial and involves increased exposure to estrogen [3] and genetic risk factors. So far, it has been proven that several SNPs are associated with an increased risk of EC, such as nucleoside diphosphate kinase 1 (nm23-H1; rs16949649 and rs2302254), serpin peptidase inhibitor, clade E (PAI-1; rs1799889) and progesterone receptor (PGR; rs11224561) [4–6]. To understand the genetic risk factors comprehensively and find effective targets, it is necessary to identify the related SNPs.

Sterol regulatory element-binding proteins (SREBPs) are transcription factors of the helix-loop-helix-leucine zipper (HLH-LZ) family. Three isoforms of SREBP have been identified in mammalian cells: SREBP-1a, SREBP-1c and SREBP-2 [7]. Two genes (SREBF-1 and SREBF-2) are responsible for expressing these proteins of which SREBF-1 gene is located on chromosome 17 p11.2. There is an overlap in the pathways and functions among the individual SREBPs, but most studies suggest that SREBP-1 mainly regulates fatty acid metabolism and SREBP-2 is the main regulator of cholesterol metabolism [8]. SREBP-1 regulates lipid homeostasis by controlling the expression of the key rate-limiting enzymes required for cholesterol and fatty acid synthesis [9]. Aberrant lipogenesis is an important metabolic feature involved in rapid proliferation of the malignant tumor cells. Several studies have shown that tumor cells are capable of reactivating de novo lipid synthesis and expressing elevated levels

of fatty acid synthase (FASN) [10] which is regulated by SREBP-1 [11]. Consistent with these findings, SREBP-1 has been demonstrated to have an association with many other malignant tumors such as breast cancer, prostate cancer and colorectal cancer as well [12–15].

Through the mechanism of lipid biosynthesis, SREBP-1 has been proposed to be a causative factor of obesity [16]. Obesity on the other hand is considered responsible for various mechanisms that precipitate into carcinogenesis [7]. Through the mechanism of insulin resistance, obesity induces the secretion of insulin from the pancreatic cells. Insulin in turn has a stimulatory effect on SREBP1 [17]. Recently, higher level of SREBP-1 has been detected in EC cells compared to the normal endometrium, and which was more prominent in higher-grade EC. Additionally, knockdown of SREBP1 was found to effectively repress the proliferating capacity of EC cells and tumor growth in vitro, further indicating that SREBP-1 plays an important role in the progression of EC [18].

To our knowledge, no study to date has reported the potential association of SREBF-1 genetic polymorphism with the risk of EC. We hypothesize that SNPs in SREBF-1 might be associated with increased risk of EC, along with several clinical criteria like pathologic grade, clinical stage, pathologic type etc. The SNPs of SREBF-1 may serve as genetic predisposition factors for the development of EC and screening of such genetic markers could be of great value for an earlier detection of this disease.

Materials and Methods

Ethics statement

The endorsed written informed consents were acquired from all the participants and the samples were collected with the approval of the Ethics Committee at Qilu Hospital of Shandong University.

In our study, we conducted a case-control analysis with a total of 139 cases and 129 controls. We firstly screened the entire gene of SREBF-1 in 30 unrelated EC patients and 6 controls to identify the associated SNPs. Based on the results we obtained, we chose

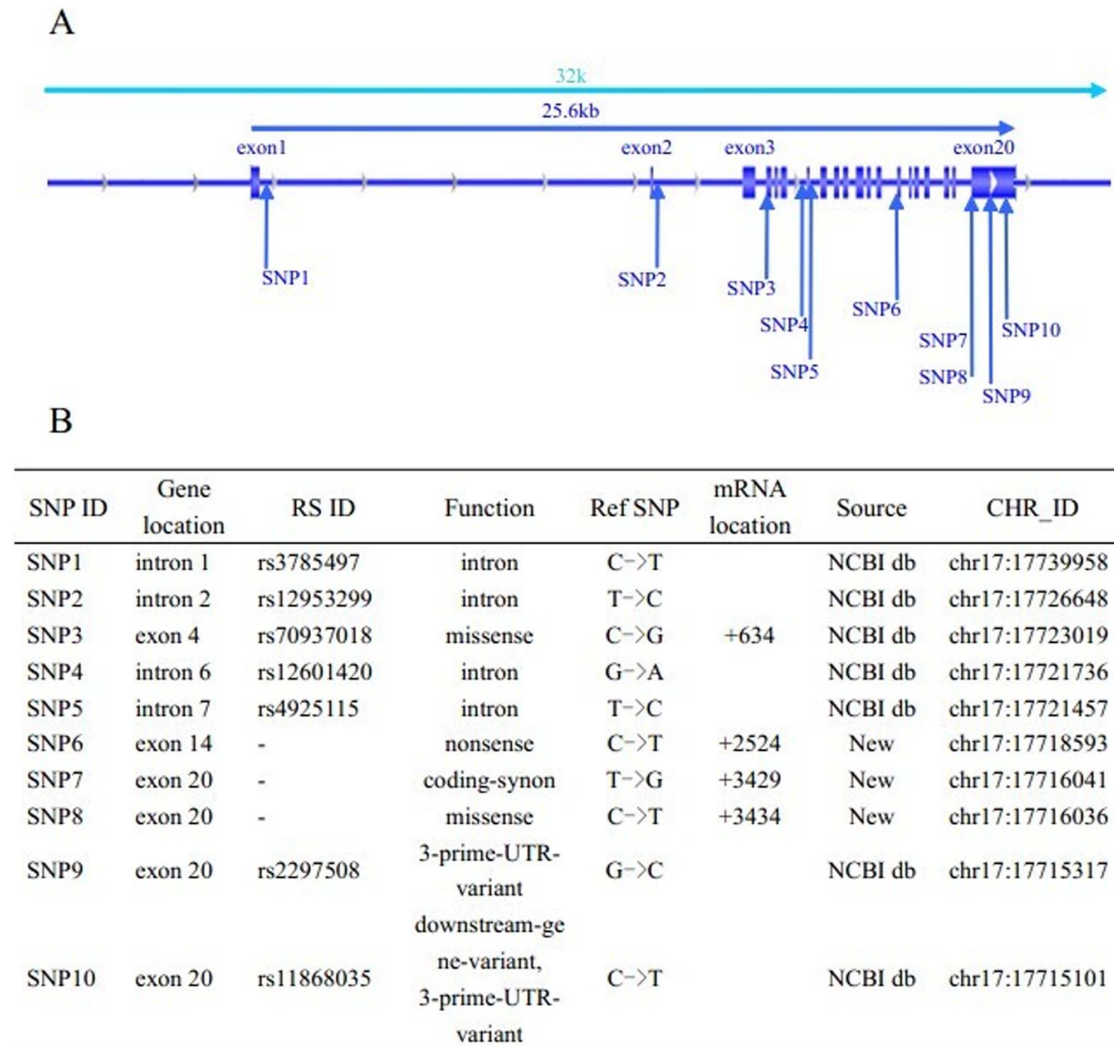


Figure 1. A: SNPs in SREBF-1 gene. The whole SREBF-1 gene includes 22 exons. Ten SNPs (SNP1 to SNP10) were identified within the SREBF-1 in our study. FIG. 1 B: SNP ID. SNP1 to SNP10 are listed from 5'-3' of the SREBF-1. "CHR-ID" shows chromosome ID of ten SNPs in SREBF-1. Listed "RS ID" has been reported in ucsc or NCBI website, "-" expresses newly detected SNP. "Function" column listed altered genetically coded function of the SNPs. "Ref SNP" shows SNP form in original reference sequence. In "mRNA location", corresponding mRNA positions are showed in consistent with each SNP. (For details: Sequence IDs included in CCDS 32583.1). NCBI db is available from <http://www.ncbi.nlm.nih.gov/SNP>. doi:10.1371/journal.pone.0090491.g001

one SNP (rs2297508) which was found in eight out of the thirty patients and none of the six controls and conducted a case-control study in order to verify its association with EC.

Study subjects

A total of 268 unbiased candidates were recruited stochastically. The samples of 139 EC specimen and 129 benign controls were collected based on their pathological reports. The endometrial samples from 139 cancer patients were obtained through surgical resection after hysterectomy performed at Qilu hospital Dept. of gynecology. The tissue samples for controls were collected from the patients with no fertility problems and with benign pathologies like leiomyomas, adenomyosis etc. The individual samples were examined under the microscope for pathological diagnosis for both groups. The EC patients were divided into two groups, 91 without diabetes and obesity and 48 with diabetes and/or obesity and this information was got from the hospital records. The normal controls with diabetes or obesity ($BMI \geq 28 \text{ Kg/m}^2$) were excluded due to the possible association of SNP (rs2297508) with both of the metabolic disorders as described in the study by Liu J. X. et al. [20]. Also, the controls had no known history of diabetes, obesity or any other malignancies in their family. The mean age of 48 patients with obesity and/or diabetes was 53.09 ± 6.7 and that of the 91 patients without diabetes or obesity was 54.36 ± 9.7 ($P = 0.196$). The mean age of the normal controls (52.46 ± 7.7) was comparable to that of the 91 patients ($P = 0.215$). The EC patients were treated surgically in Qilu Hospital from 2008 to 2012. They were categorized into endometrioid (type I) and non-endometrioid (type II) EC and the tumors were staged in accordance to the 2009 International Federation of Gynecology and Obstetrics (FIGO) classification.

DNA preparation

The fresh tissue specimen collected was stored at -80°C refrigeration. Genomic DNA was extracted from the tissues using a QIAamp DNA Mini kit (Qiagen, USA) following the manufacturer's protocol. The extracted DNA was dissolved in TE buffer [10 mM Tris (pH 7.8), 1 mM EDTA] and then the concentration was measured with a reference to OD value of 260 nm (BIO-RAD SmartSpec Plus). The final preparation was stored at -20°C for PCR amplification. Amplifications was conducted using a 5 min initial denaturation at 94°C , followed by 30 cycles each lasting

30 sec at 94°C , 30 sec at 60°C , 30 sec at 72°C and a 10-min final extension at 72°C . The forward and reverse primers were 5' GACCTGAGGCTCCTGTGCTAC 3' and 5' AAGTCAGTC-CATCCTCCCGT 3' respectively.

Selection of SREBF-1 polymorphism points

In order to access adequate information about the potential association of SNPs in SREBF-1 with endometrial cancer, we first screened the entire gene of SREBF-1 in 30 unrelated patients and 6 controls by high throughput sequencing technique using PSTAR-II plus (IDN01-M-P2). The 36 subjects were randomly chosen and matched on the basis of their ages. We were able to identify 10 SNPs, including three newly detected ones. All the findings were assayed by Pstar-II 6.0.4 build3 software. For the association study, we selected only one SNP (rs2297508) based on its allelic frequency which exhibited an obvious and significant relation to EC.

SREBF-1 genotyping

Real-time polymerase chain reaction analysis was used to genotype the SNP (rs2297508) in SREBF-1. The primer sequences for the SNP were as follows: gF 5' CTCCCCAGCACCTACGG 3', cF 5' CTCCCCAGCACCTACGC 3' as the forward primer and R 5' CTCCCCACTCCTCCCACTAAC 3' as the reverse primer. The reaction system (20 ul) for rt-PCR included 10 ul All-In-One qPCR Mix, 0.4 ul forward Primer F (2 μM), 0.4 ul reverse Primer R (2 μM), 2 ul genomic DNA and 7.2 ul ddH₂O. The reaction procedure was conducted on a real time PCR instrument (Step One Plus (ABI)) dividing into three stages: holding stage at 95°C for 20 s, cycling stage of 40 cycles each including 3 s at 95°C and then 30 s at 60°C , melting curve stage at 60°C for 60 s followed by 95°C for 15 s.

Statistical Analysis

Hardy-Weinberg equilibrium analyses were conducted to compare genotype frequencies using χ^2 test among controls ($\chi^2 = 1.24$, $p = 0.26$). Comparison of genotype frequencies between EC patients and controls were performed using Pearson χ^2 test. We also evaluated the relationship between genotype distribution of SREBF-1 SNPs and the clinical criteria of EC (divided on the basis of presence or absence of diabetes and obesity, age,

Table 1. Genotypic and allelic frequencies of the 10 SNPs in the 6 controls and 30 EC patients.

	Normal controls						EC patients				
		Genotype frequency(%)			Allele frequency(%)		Genotype frequency(%)			Allele frequency(%)	
		1/1	1/2	2/2	1	2	1/1	1/2	2/2	1	2
SNP1	C/T	83.3	16.7	0	91.7	8.3	93.3	6.7	0	96.7	3.3
SNP2	T/C	100	0	0	100	0	90.0	10.0	0	95.0	5.0
SNP3	C/G	100	0	0	100	0	96.7	3.3	0	98.3	1.7
SNP4	G/A	0	66.7	33.3	33.3	66.7	3.3	56.7	40.0	31.7	68.3
SNP5	T/C	100	0	0	100	0	93.4	3.3	3.3	90.0	10.0
SNP6	C/T	100	0	0	100	0	96.7	3.3	0	98.3	1.7
SNP7	T/G	100	0	0	100	0	96.7	3.3	0	98.3	1.7
SNP8	C/T	100	0	0	100	0	96.7	3.3	0	98.3	1.7
SNP9	G/C	100	0	0	100	0	73.3	20.0	6.7	83.3	16.7
SNP10	C/T	0	16.7	83.3	8.3	91.7	6.7	16.7	76.6	15.0	85.0

doi:10.1371/journal.pone.0090491.t001

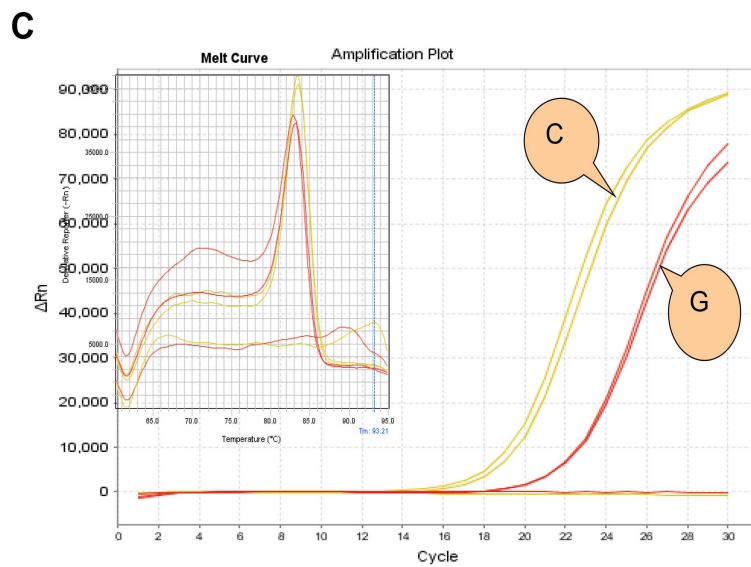
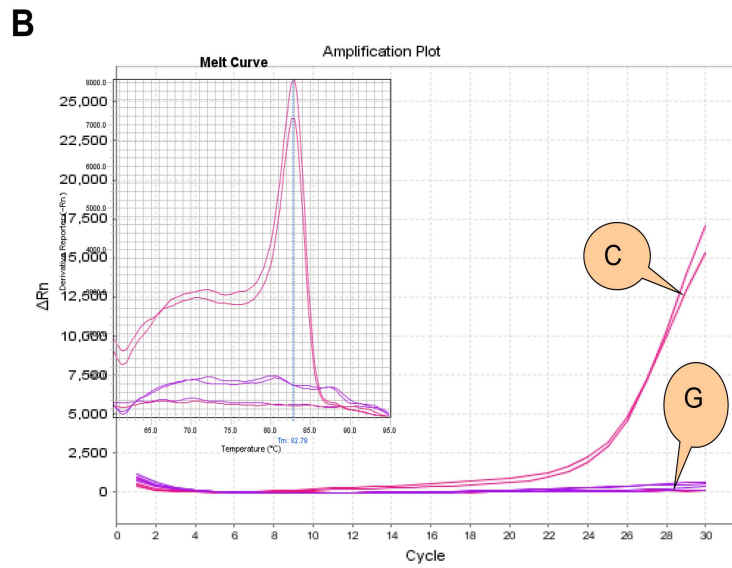
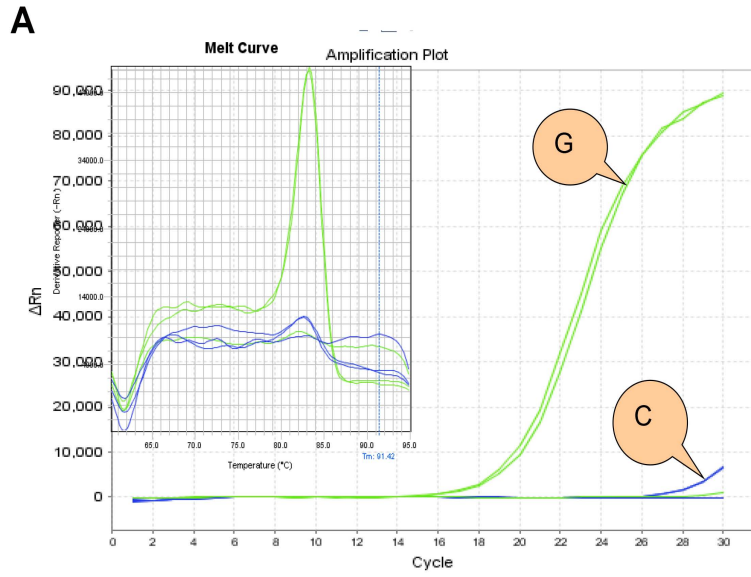


Figure 2. GG, CC and GC genotypes in the samples. Fig. 2 A, B and C show GG, CC and GC genotype respectively as shown by the results obtained by RT-PCR.

doi:10.1371/journal.pone.0090491.g002

histological type, pathological grading and clinical stages). Analyses were conducted by using the computer software SPSS (version 17.0). $P < 0.05$ was considered the level of statistical significance.

Results

SNP identification and genotyping

Our screening identified 10 polymorphisms (SNP1 to SNP10) including 3 newly detected sites (Fig. 1). The C allele in SNP9 (rs2297508) was detected in eight of thirty patients (26.7%), but in none of the controls. Other detected SNPs showed little difference between patients and controls. (Table 1) Then, we selected SNP9 (rs2297508) for further study and analyzed all experimental samples and controls using real-time polymerase chain reaction. The results (GG, GC or CC) were analyzed by Step One Software V2.1. Genotyping was conducted based on the differing amplification curves observed for different genotypes (Fig. 2).

Association between SNP rs2297508 and risk of EC

The allele distribution of SNP (rs2297508) on SREBF-1 genotypes in control groups is consistent with Hardy-Weinberg equilibrium as tested by χ^2 test ($\chi^2 = 2.27$, $P = 0.13$). The variation in the distribution of C allele between EC patients and normal controls was clearly shown ($P = 0.027$). The χ^2 test revealed that the GC/CC genotypes or C allele carriers had an increased risk of EC (OR = 1.966 and OR = 1.983 respectively) compared to GG or G carriers respectively. Confidence intervals of the odds ratio (OR) was used to describe the limitations within which the estimated calculations should be valid. The comparison of genotypic and allelic frequencies of the SNP between EC patients and normal controls is shown in Table 2. The results were consistent with our preliminary high throughput experiment.

Association between SNP rs2297508 and pathological grade and the depth of myometrial invasion of EC

We have attempted to explain the role of polymorphic locus rs2297508 on co-existing conditions like diabetes, obesity, as well as on different age groups, pathological types and pathological grades of the cancer, clinical stages and myometrial invasion in EC patients (Table 3). Since diabetes and obesity are two major risks known to be closely tied to EC, and the SNP being a crucial marker of the genetic predisposition of EC, it could be assumed that there was a potential effect of this particular polymorphism on the condition. We divided the EC patients into two groups (with diabetes or obesity and without). However, no significant difference in allele frequency was evident between the two. Other criteria for dividing the subjects into various groups were determined according to previous reports as well as clinical significance [4,5]. The results showed that the SNP C variant carriers had higher pathological grade and deeper myometrial invasion (OR = 2.042 and OR = 2.233 respectively) compared to G carriers. Furthermore, the GC/CC genotype and the C allele were significantly associated with pathological grade ($\chi^2 = 4.095$, $P = 0.043$ and $\chi^2 = 3.893$, $P = 0.048$ respectively) and myometrial invasion ($\chi^2 = 4.018$, $P = 0.045$ and $\chi^2 = 4.170$, $P = 0.041$ respectively). Other criteria such as age, pathological type and clinical stage did not show any significant association with the SNP.

Discussion

Lipid biosynthesis is essential for the maintenance of cellular homeostasis while increased de novo lipid synthesis is a common metabolic feature of carcinogenesis [19]. The increased expression of FASN and LDLR (Low Density Lipoprotein Receptor) in tumor cells attest to this statement [20]. SREBPs can regulate various enzymes involved in fatty-acid and cholesterol biosynthesis. Apart from influencing several enzymes involved in lipogenesis, SREBP also participates in the conversion of androgen into estrogen through the aromatization reaction thus raising the level of estrogen in the circulation. Obesity has also been found responsible for lowering the levels of progesterone which has a strong antagonizing effect on the carcinogenic function of estrogen [21]. Moreover, SREBP1 is also associated with modulating the transcription of the enzyme 17 β -Hydroxysteroid dehydrogenase type 12 (17 β -HSD12) which is responsible for the transformation of estrone (E1) to a more potent form, estradiol (E2) [22,23]. So, we can deduce that SREBP activity is required for tumor growth, implying that SREBP plays a significant role in oncogenesis. In addition, the aberrantly increased expression of SREBP-1 has been found in several cancers, including EC [18].

In this research we postulated that SNPs in SREBF-1 gene have potential role in genetic predisposition of EC. A previous study detected 19 polymorphisms in SREBF-1 and demonstrated the association between SREBF-1 polymorphisms and obesity as well as type II diabetes [19]. Furthermore, epidemiological studies have confirmed that obesity is one of the major risk factors of EC while SREBF-1 gene polymorphisms have associations with metabolic diseases (type2 diabetes and obesity) [24]. Another study concluded that the SNPs rs2297508 and rs11868035 in the SREBP-1c gene have relationships with increased risk of T2DM and dyslipidemia in the Chinese population. The same study also showed that the SNP (rs11868035) is significantly associated with insulin resistance (IR) in diabetic patients [25]. However, the studies, demonstrating the relationship between SREBF-1 genetic polymorphisms and cancers, are rare. Up till now, only Daniele Campa and his co-workers have investigated the relationship between SNPs in SREBF-1 and oncogenesis of breast cancer, but no statistically significant associations were found between the SNPs detected and the risk of breast cancer [26]. Thus we have also further assessed our hypothesis that the genetic polymorphisms are linked with diabetes and obesity along with few other clinical criteria associated with EC.

To our knowledge, this is the first report examining the role of SREBF-1 gene polymorphisms in EC. In our study, we found that the distribution of the SNP (rs2297508) had a distinct demarcation between EC patients and benign controls. The C allele in the SNP was associated with higher susceptibility to EC. Therefore, we predict the high possibility of C allele in the SNP having a crucial relationship with the risk of EC and we believe that further exploration would lead researchers towards developing a new therapeutic target for the treatment of EC.

We further analyzed the association of different clinical characteristics in EC patients with the SNP. First, we evaluated association between diabetes and/or obesity and genotypic or allelic frequency in EC patients. But no statistical significance was found between the two groups. That is to say, the SNP has the same distribution in EC patients irrespective of the presence or the absence of risk factors like diabetes and obesity. It suggested that

Table 2. Genotype/allele frequency of SREBF-1(rs2297508) in EC patients and normal controls.

SREBF-1 (rs2297508)	Benign Controls(129)	EC patients(91)	χ^2	P-value	OR	95%CI
GG	111(86.0%)	69(75.8%)			1	
GC/CC	18(14.0%)	22(24.2%)	3.748	0.053	1.966	0.985–3.926
G	238(92.25%)	156(85.7%)			1	
C	20(7.75%)	26(14.2%)	4.867	0.027	1.983	1.070–3.676

OR odds ratio CI confidence limit.
doi:10.1371/journal.pone.0090491.t002

there was abnormal lipid metabolism associated with the SNP in EC which is independent of diabetes and obesity. Then we compared age criteria, pathological types and clinical stages, but

no significant associations were obtained, thus providing evidence that there exists no association between the SNP and those clinical characteristics. Consistence with the report presented by Li W. et

Table 3. Genotype/allele distribution of SREBF-1(rs2297508) in EC patients with different characteristics.

Endometrial cancer(n = 139)		Rs2297508				Rs2297508			
		GG	GC/CC ^a	χ^2	P-value	G	C ^b	χ^2	P-value
Diabetes and obesity condition	None	69(75.8%)	22(24.2%)			156(85.7%)	26(14.3%)		
	With one of the two or both	36(75.0%)	12(25.0%)	0.012	0.914	81(84.4%)	15(15.6%)	0.765	0.090
	OR	1.045				1.111			
		95%CI				95%CI			
		0.465–2.352				0.557–2.215			
Age (year)	≤50	31(72.1%)	12(27.9%)			72(83.7%)	14(16.3%)		
	>50	74(77.1%)	22(22.9%)	0.400	0.527	165(85.9%)	27(14.1%)	0.232	0.630
	OR	0.768				0.842			
		95%CI				95%CI			
		0.339–1.742				0.417–1.699			
Pathologic types	Endometrioid	88(75.2%)	29(24.8%)			198(84.6%)	36(15.4%)		
	Non-endometrioid	17(77.3%)	5(22.7%)	0.042	0.837	39(88.6%)	5(11.4%)	0.476	0.490
	OR	0.892				0.705			
		95%CI				95%CI			
		0.303–2.633				0.260–1.910			
Pathological grade	Low grade	85(81.7%)	19(18.3%)			189(87.5%)	27(12.5%)		
	High grade	20(64.5%)	11(35.5%)	4.095	0.043	48(77.4%)	14(22.6%)	3.893	0.048
	OR	2.461				2.042			
		95%CI				95%CI			
		1.012–5.980				0.995–4.190			
Clinical Stages	I	75(72.8%)	28(27.2%)			173(84.0%)	33(16.0%)		
	II	14(87.5%)	2(12.5%)	1.584 ^c	0.208 ^c	29(90.6%)	3(9.4%)	0.319 ^c	0.572 ^c
	III–IV	16(80.0%)	4(20.0%)	0.449 ^d	0.503 ^d	35(87.5%)	5(12.5%)	0.007 ^d	0.935 ^d
		OR ^c				OR ^c			
		0.383				0.693			
		95%CI ^c				95%CI ^c			
		0.082–1.792				0.193–2.488			
		OR ^d				OR ^d			
		0.670				0.957			
		95%CI ^d				95%CI ^d			
		0.206–2.176				0.336–2.730			
myometrial invasion	<1/2	60(77.9%)	17(22.1%)			134(87.0%)	20(13.0%)		
	≥1/2	15(57.7%)	11(42.3%)	4.018	0.045	39(75.0%)	13(25.0%)	4.170	0.041
	OR	2.588				2.233			
		95%CI				95%CI			
		1.005–6.667				1.020–4.892			

Statistical analysis:Pearson χ^2 test.

Age ≤50 years old, endometrioid type, low grade, stage I and myometrial invasion <1/2 were considered as references for comparison.

^aOdds ratio(OR) of the GC/CC against the GG genotypes.

^bOdds ratio(OR) of the C against the G alleles.

^cComparison between stage I and II.

^dComparison between stage I and III–IV.

doi:10.1371/journal.pone.0090491.t003

al. [21], the C allele in the SNP exhibited a significant association with higher-grade tumor. Moreover, the patients with C allele showed a higher risk of developing a deeper myometrial invasion as compared to those with G allele at the SNP locus. This finding might result from late detection of the disease however we cannot exclude the possibility of the influence of SNP. There might be a potential relationship between pathological grade of tumor as well as depth of myometrial invasion. However further research is needed to clarify this concept. In summary, the C allele seems to be a marker for a higher grade tumor and deeper myometrial invasion in EC, and hence could act as an indispensable marker to be taken into account in clinical evaluation and treatment of EC in the near future.

In conclusion, our study mainly investigated the association between the SNP (rs2297508) in SREBF-1 and the risk of EC and found that C allele of the SNP is potentially a risk factor for EC. At the same time, we analyzed the association of the SNP with different clinical criteria of EC and the results showed that patients with higher C allelic frequency were more susceptible to develop high grade tumor and deep myometrial invasion. The results indicated that the SREBF-1 polymorphism might play an essential role in increasing the genetic susceptibility to EC. Therefore we assume that this could assist the physician in clinical diagnosis of the condition and would also guide towards a targeted clinical therapy.

In our study, we employed high throughput sequencing, a reliable technique with great accuracy and precision, to detect 10 SNPs associated with EC including three new ones which might be

of significance for other studies in the future. Furthermore, we confirmed that the SNP (rs2297508) in SREBF-1 has a significant influence on EC susceptibility and clinical criteria. However, our study has some limitations. At the subject level, we don't have lifestyle data such as dietary intake, physical activity, hormonal contraceptive use etc. that are likely to influence the susceptibility of the SNPs to EC risk. Further, it is unknown whether the SNP works in coordination with other SNPs in increasing the risk of EC. Future studies of larger sample size will be necessary to study the influence of these factors on the association between the SNP and risk of EC.

Supporting Information

Information S1.

(DOC)

Acknowledgments

We would like to thank Dr. Judith A. Strong, Department of Anesthesiology, University of Cincinnati College of Medicine for her comments/suggestion in preparing the manuscript.

Author Contributions

Conceived and designed the experiments: JJ CQ QL SD CW. Performed the experiments: CQ QL. Analyzed the data: CQ QL SD. Contributed reagents/materials/analysis tools: JJ CW. Wrote the paper: CQ QL SD. Article editing: SD.

References

- Sorosky JI (2008) Endometrial cancer. *Obstet Gynecol* 111: 436–47.
- Siegel R, Naishadham D, Jemal A (2013) Cancer statistics 2013. *CA Cancer J Clin* 63: 11–30.
- Weiss JM, Saltzman BS, Doherty JA, Voigt LF, Chen C, et al. (2006) Risk factors for the incidence of endometrial cancer according to the aggressiveness of disease. *Am J Epidemiol* 164: 56–62.
- Wang PH, Yi YC, Tsai HT, Tee YT, Ko JL, et al. (2010) Significant association of genetic polymorphism of human nonmetastatic clone 23 type 1 gene with an increased risk of endometrial cancer. *Gynecol Oncol* 119: 70–75.
- Su CK, Yeh KT, Yeh CB, Wang PH, Ho ES, et al. (2011) Genetic Polymorphism of the Plasminogen Activator Inhibitor-1 is Associated With an Increased Risk of Endometrial Cancer. *J Surg Oncol* 104: 755–759.
- O'Mara TA, Fahey P, Ferguson K, Marquart L, Lambrechts D, et al. (2011) Progesterone receptor gene variants and risk of endometrial cancer. *Carcinogenesis* 32: 331–335.
- Brown MS, Goldstein JL (1997) The SREBP pathway: regulation of cholesterol metabolism by proteolysis of a membrane-bound transcription factor. *Cell* 89: 331–340.
- Horton JD, Goldstein JL, Brown MS (2002) SREBPs: activators of the complete program of cholesterol and fatty acid synthesis in the liver. *J Clin Invest* 109: 1125–1131.
- Claudio R, Santos AS (2012) Lipid metabolism in cancer. *The Febs journal* 279: 2610–2623.
- Menendez JA, Lupu R (2007) Fatty acid synthase and the lipogenic phenotype in cancer pathogenesis. *Nat Rev Cancer* 7: 763–777.
- Horton JD (2002) Sterol regulatory element-binding proteins: transcriptional activators of lipid synthesis. *Biochem Soc Trans* 30: 1091–1095.
- Huang WC, Li X, Liu J, Lin J, Chung LW (2012) Activation of androgen receptor, lipogenesis, and oxidative stress converged by SREBP-1 is responsible for regulating growth and progression of prostate cancer cells. *Mol Cancer Res*, 10: 133–142.
- Yang Yu, Morin PJ, Han WF, Chen T, Bornman DM, et al. (2003) Regulation of fatty acid synthase expression in breast cancer by sterol regulatory element binding protein-1c. *Exp Cell Res* 282: 132–137.
- Rashid A, Pizer ES, Moga M, Milgram LZ, Zahurak M, et al. (1997) Elevated expression of fatty acid synthase and fatty acid synthetic activity in colorectal neoplasia. *Am J Pathol* 150: 201–208.
- Wang Q, Zhang WY, Ye LH, Zhang XD (2010) A mutant of HBx (HBxΔ127) promotes hepatoma cell growth via sterol regulatory element binding protein 1c involving 5-lipoxygenase. *Acta Pharmacologica Sin* 31: 367–374.
- Jeon TI, Osborne TF (2012) SREBPs: metabolic integrators in physiology and metabolism. *Trends Endocrinol Metab* 23: 65–72.
- Kaaks R, Lundin E, Rinaldi S, Manjer J, Biessy C, et al. (2002) Prospective study of IGF-I, IGF-binding proteins, and breast cancer risk, in northern and southern Sweden. *Cancer Causes Control* 13: 307–316.
- Li W, Tai Y, Zhou J, Gu W, Bai Z, et al. (2012) Repression of endometrial tumor growth by targeting SREBP1 and lipogenesis. *Cell Cycle* 11: 2348–58.
- Krycer JR, Sharpe IJ, Luu W, Brown AJ (2010) The Akt-SREBP nexus: cell signaling meets lipid metabolism. *Trends Endocrinol. Metab* 21: 268–276.
- Wei Shao, Peter J (2012) Espenshade. Expanding Roles for SREBP in Metabolism. *Cell Metabolism*. 16: 414–419.
- Modesitt SC, Geffel DL, Via J, Weltman A (2012) Morbidly obese women with and without endometrial cancer: are there differences in measured physical fitness, body composition, or hormones? *Gynecol Oncol* 124: 431–436.
- Nagasaki S, Miki Y, Akahira J, Suzuki T, Sasano H (2009) Transcriptional regulation of 17beta-hydroxysteroid dehydrogenase type 12 by SREBP-1. *Mol Cell Endocrinol* 307: 163–168.
- Luu-The V, Tremblay P, Labrie F (2006) Characterization of type 12 17beta-hydroxysteroid dehydrogenase, an isoform of type 3 17beta-hydroxysteroid dehydrogenase responsible for estradiol formation in women. *Mol Endocrinol* 20: 437–443.
- Eberlé D, Clément K, Meyre D, Sahbatou M, Vaxillaire M, et al. (2004) SREBF-1 Gene Polymorphisms Are Associated With Obesity and Type 2 Diabetes in French Obese and Diabetic Cohorts. *Diabetes*. 53: 2153–2157.
- Liu JX, Liu J, Li PQ, Xie XD, Guo Q, et al. (2008) Association of sterol regulatory element-binding protein-1c gene polymorphism with type 2 diabetes mellitus, insulin resistance and blood lipid levels in Chinese population. *Diabetes Res Clin Pract*. 82: 42–47.
- Campa D, McKay J, Similnikova O, Hüsing A, Vogel U, et al. (2009) Genetic variation in genes of the fatty acid synthesis pathway and breast cancer risk. *Breast Cancer Res Treat*. 118: 565–574.