

6-1970

## Nurses' Alumnae Association Bulletin, June 1970

Katherine Fleck Saunders

Mabel C. Prevost

Doris E. Bowman

Elizabeth J. Sweeney

Elizabeth Stone

*See next page for additional authors*

### Let us know how access to this document benefits you

Follow this and additional works at: [https://jdc.jefferson.edu/nursing\\_alumni\\_bulletin](https://jdc.jefferson.edu/nursing_alumni_bulletin)Part of the [Nursing Commons](#)

#### Recommended Citation

Saunders, Katherine Fleck; Prevost, Mabel C.; Bowman, Doris E.; Sweeney, Elizabeth J.; Stone, Elizabeth; Hindson, Janet; Schwartz, Lenora Weiner; Heckenberger, Dolores H.; McCracken, Julia T.; Frazier, Evelyn W.; Zamitis, Susane B.; Piersol, Betty; Summers, Margaret; Roche, Florence; Roberts, Jill A.; and Reed, Christine, "Nurses' Alumnae Association Bulletin, June 1970" (1970).

*Nursing Alumni Bulletins*. Paper 24.

[https://jdc.jefferson.edu/nursing\\_alumni\\_bulletin/24](https://jdc.jefferson.edu/nursing_alumni_bulletin/24)

---

**Authors**

Katherine Fleck Saunders, Mabel C. Prevost, Doris E. Bowman, Elizabeth J. Sweeney, Elizabeth Stone, Janet Hindson, Lenora Weiner Schwartz, Dolores H. Heckenberger, Julia T. McCracken, Evelyn W. Frazier, Susane B. Zamitis, Betty Piersol, Margaret Summers, Florence Roche, Jill A. Roberts, and Christine Reed

**NURSES' ALUMNAE ASSOCIATION  
BULLETIN**

1891



1970

**School of Nursing**  
*of the*  
**Jefferson Medical College Hospital**

JUNE 1970

# NURSES' ALUMNAE ASSOCIATION BULLETIN

JUNE 1970

## IN THIS ISSUE

Alumnae President's Message .....	1
Congratulations Alumni Association .....	2
Portrait of Samuel D. Gross .....	3
Officers and Chairmen of Committees .....	4
Financial Report .....	4
Progress of Jefferson 1969-70 .....	5
School of Nursing Annual Report .....	7
School of Practical Nursing Report .....	9
Emergency Department .....	10
Patient Services Department .....	14
Annual Luncheon Pictures .....	16
Committee Reports:	
Social .....	18
Membership .....	18
Scholarship .....	19
Program .....	19
Bulletin .....	20
Ways and Means .....	21
Progress of the Alumnae Association .....	25
Crossword Puzzle .....	26
"Missing Graduates" .....	28
Resume of Alumnae Meetings Minutes .....	29
Class News .....	35
Student Nurses Section .....	55
Crossword Puzzle Answers .....	60
Notices .....	Inside Back Cover



## A MESSAGE FROM THE PRESIDENT

Dear Alumnae:

The response that you have shown in support of the Adele Lewis Student Nurse Scholarship Fund has been most gratifying and generous. It is hoped that with this continued support the first scholarship may soon be awarded by your association to a deserving student nurse.

I, too, join the Membership Committee in urging all alumnae of Jefferson to join the association. Your attendance at the meetings and participation in the social affairs will help your association to grow.

May I extend my thanks and best wishes to all as we look forward to another great year!

*Katherine Fleck Saunders, 1928*



CONGRATULATIONS  
to  
THE ALUMNI ASSOCIATION  
of  
JEFFERSON MEDICAL COLLEGE  
on their  
CENTENNIAL

1870

1970

College minutes state that on March 19, 1870 Professor Samuel D. Gross, founder of the Alumni Association, was inaugurated as the first President.

The Jefferson Alumni purchased this portrait in 1879 for \$200.00 and gave it to the College. It is now valued at well over a million dollars and is on loan to the Metropolitan Museum of Art, New York.





**JEFFERSON NURSES' ALUMNAE  
ASSOCIATION BULLETIN**  
Published Annually

**OFFICERS**

President  
KATHERINE F. SAUNDERS, '28

First Vice-President  
PERMA E. DAVIS, '41

Second Vice-President  
MARY ANN STAUFFER, '54

Recording Secretary  
FLORENCE ROCHE, '56

Secretary-Treasurer  
CAROLINE MASUDA, '37

**BOARD OF DIRECTORS**

MALORIE O'DONNELL, '64  
BEVERLY RUPP, '56  
DOLORES HECKENBERGER, '55  
ELIZABETH PIERSOL, '34  
MARGARET SUMMERS, '41  
MARGARET COSSMAN, '47  
(ex officio)

**COMMITTEE CHAIRMEN**

Social  
JANET HINDSON, '50

Program  
DOLORES HECKENBERGER, '55

Membership  
LENORE SCHWARTZ, '66

Scholarships  
DORIS BOWMAN, '41

Ways & Means  
ELIZABETH PIERSOL, '34

Nominating  
SUSANE ZAMITIS, '66

Sick and Welfare  
JEANETTE PLASTERER, '50

By-Laws  
ELIZABETH STONE, '36

Bulletin  
JULIA McCracken, '34

**FINANCIAL REPORT**  
DECEMBER 31, 1969

**RECEIPTS:**

Dues and Reinstatement of Members .....	\$ 4,617.00
Sale of Bulletin .....	201.00
Annual Luncheon Reservations ..	1,796.75
Interest on Savings Accounts ..	953.30
Miscellaneous .....	352.47
Annual Giving Contributions	
General Fund .....	930.75
Relief Fund .....	1,430.96
Scholarship Fund .....	626.75
T. A. Shallow Memorial Fund	10.00
Adele Lewis Student	
Mem. Fund .....	2,373.75
Building Fund .....	46.00
<b>Total Receipts</b>	<b>\$13,338.73</b>

**DISBURSEMENTS:**

Annual Luncheon Expenses ...	1,819.35
Convention Expenses .....	1,345.50
Printing, Mailing, Stationary & Bulletins (2 years) .....	4,543.12
Sick Benefits for Members ....	1,568.15
Graduation Prizes .....	100.00
Contributions—United Fund,	
Career Research—T. B. Assoc.	200.00
Purchase of Office Equipment ..	906.52
Other Operating Expenses ....	1,807.12
<b>Total Disbursements</b>	<b>\$12,289.76</b>

**CASH BALANCE**  
December 31, 1968 .....\$29,201.98

**CASH BALANCE—December 31, 1969**

General Fund—	
Checking Account .....	\$ 1,622.64
Savings Account .....	4,642.14
Relief Fund .....	16,736.43
Scholarship Fund .....	1,498.10
T. A. Shallow Memorial Fund	2,188.74
Adele Lewis Student	
Scholarship Fund .....	2,741.96
Building Fund .....	1,009.45
	<b>\$30,439.46</b>

**PROGRESS OF JEFFERSON 1969-70**

The last year has sped by marked by some new "firsts" at Jefferson as well as planning for additional ones in the immediate and further distant future.

First of all, on July 1, 1969, the Jefferson Medical College and Medical Center became Thomas Jefferson University. Today, the University consists of Jefferson Medical College, Thomas Jefferson University Hospital, College of Allied Health Sciences and School of Graduate Studies. As you know, the School of Nursing is a school under the College of Allied Health Sciences.

Over the past fifteen years, we have been engaged in a giant checker game as new facilities have been constructed and old ones remodeled necessitating many moves to accommodate patients during construction. One such move which took place this past year was a preliminary one needed to clear space required for the Cardiac Care Unit.

When the Fourth Floor, Thompson Building, the former Bronchoscopic Floor was selected as the site for this new unit, major changes in the Pavilion operating rooms had to be made to accommodate the Bronchoscopic operating rooms. Operating Room floors were closed and rooms were rescheduled while business went on as usual. The operating rooms have been reopened and the Cardiac Care Unit will be ready for patients by the end of this year.

The Cardiac Care Unit will be a twelve bed unit, four beds being allocated to surgical and the remainder to the medical patients. Complete facilities, including physicians' offices, conference rooms, laboratories and other accommodations for patients with cardiac conditions will be located here.

Plans for the complete renovations of the nurseries, both term, and intensive care and premature, have been submitted to the Philadelphia Department of Health. This construction will involve several more moves since the areas involved will have to be closed and the babies relocated during construction. We are looking forward to approval of the plans after which, construction will be initiated.

For some time now, we have been caring for high risk infants transferred from other hospitals, not only in Philadelphia, but also from hospitals along the Eastern Seaboard in New Jersey. Under the supervision and care of Dr. Mary Louise Soentgen, Department of Pediatrics and an excellent staff of nurses, many tiny babies have been saved who otherwise may not have survived. Since time is so important in the transportation of these newborns, plans are underway for Jefferson to construct a heliport on top of the Foerderer Pavilion.

While heliport construction was proposed primarily for air transportation for infants, it will also be valuable in the transportation of patients in cardiac failure or those who are victims of accidents.

Another innovation frequently reported in the literature and already in operation in several midwestern hospitals has been initiated on a limited basis at Thomas Jefferson University Hospital. The unit dose pharmacy is a satellite pharmacy located on a patient unit, in which a pharmacist prepares medication in unit doses for patients in accordance with the physicians' orders. In some situations, the pharmacist administers the medication. A pilot program was initiated on the Sixth Floor, Main Building and has been so successful that this unit now covers Fifth Floor, as well. Plans for extending this program are underway. This is an expansion project, so that for economic reasons alone, such a pharmacy should serve roughly one hundred patients. It is reported that these units have a significant effect upon the reduction of medication errors.

The Code Blue is Jefferson's terminology to indicate a patient in need of cardiac or respiratory resuscitation. Our goal is the establishment of a life-saving



emergency team, equipped with the Max Cart (Mobile Emergency Life Support and Resuscitation Vehicle) to be at a patient's bedside within ninety seconds from anywhere in the hospital. We are well on the way to meet that goal with the Emergency Command system which is activated by a single telephone call to extension 1-2-3. Through a complicated electronic system, this call alerts pre-selected vital telephones with a special ring, activates the power supply of the Max Cart, the radio page transmitters and the pocket pagers of the emergency team; selects the fastest elevator, sends it to the proper floor and locks it until Max is aboard. Max has its own power, and all life supporting drugs and equipment so that the team has immediately available everything necessary to resuscitate a patient.

The Scott Library and Administration Building, located on Walnut Street between the Student Nurses' Residence and the Orlowitz Building is nearing completion. To the rear of the building is the statue of Dr. Samuel Gross who founded the Alumni Association of Jefferson Medical College. This statue is on permanent loan from the Armed Forces Institute of Pathology in Washington, D.C. The statue was rededicated as Jefferson Medical College celebrated its Centennial in May of this year.

In all of the planning, remodeling, and construction, one of the most exciting in the long range development of Thomas Jefferson University is the proposed plan for a new teaching hospital. A report submitted by the consultants and architects was the result of many hours of planning with the Senior Officers, members of the Board of Trustees, and the Planning Committee. The study took into consideration pertinent social issues, community needs, goals of the University and programs designed to meet these goals. The plans provide for a physical environment to support activities capable of adapting over time to changing patterns of patient care, teaching and research. As plans are crystallized and decisions are made, you will be hearing more about the new Thomas Jefferson University Hospital.

The Old Market Fair 1970, sponsored by the Women's Board and Thomas Jefferson University Hospital, was held for the first time this year on Jefferson's grounds, the parking lot opposite Jefferson Hall. During the last five years, this event was celebrated at Head House at Second and Pine Streets. Space for the Fair was rather limited this year because of the construction of the Scott Building. We hope that next year when you make plans to attend the Alumnae Luncheon you will include some extra time to go to a bigger, better and more colorful Fair while touring the newest building.

While this report mentions the highlights of the last year, many other on-going changes mark the progress which attests that our Alma Mater is keeping pace with the rapid advances in medical sciences. We've always been proud of Jefferson, but we can be even more so as the years go by. For so long Jefferson seemed not to move except in the old traditional patterns. This pattern has been changing over the past two decades with the pace accelerating in recent years, as Jefferson becomes more involved with community problems, new thinking, and an increase in research and educational programs.

The new University needs the support of all of us to continue its progress and we know that she can rely upon that of our School of Nursing Alumnae Association.

My very best wishes to all of you for a healthy, prosperous, and satisfying year to come.

Mabel C. Prevost  
Assistant Hospital Director

## SCHOOL OF NURSING ANNUAL REPORT TO THE ALUMNI ASSOCIATION

As some of you already know, we are now the School of Nursing of Thomas Jefferson University, College of Allied Health Sciences. The change in name from Jefferson Medical College and Medical Center to Thomas Jefferson University was effective July 1, 1969.

While our change in status has not as yet caused any great change in the Diploma Program, future planning includes the establishment of an Associate Degree Program as well as a Baccalaureate Program in Nursing. Plans are that the Diploma Program will continue as long as it can attract and retain sufficient students to make it viable. At the present time, some of our students participate in the Elective Program offered by the College of Allied Health Sciences and beginning in September 1969, Sociology and Psychology were given as credit courses. We hope that the number of credit courses we are able to give through the College of Allied Health Sciences will be increased.

There are currently 206 students in the School of Nursing, 85 of whom were admitted in September 1969. It has been necessary to step up recruitment activities considerably. The Counselor and Registrar work together in arranging visits and Future Nurse Club Programs. During the year, we visited 22 schools and had 27 school groups visiting with us.

The only major curriculum change during the year was in Psychiatric Nursing. The 12-week experience at Philadelphia State Hospital was reduced to a 6-week experience and a contract was negotiated with the Philadelphia Psychiatric Center for an additional 6-week experience.

In the development of the teaching program we have found that our closed circuit television and the videotape recorder are increasingly valuable to us. We have added to our library of videotapes and believe these tapes will be useful for many years in the student program as well as for faculty in-service. New tapes include a lecture series by Dr. Ciell on Ear Nursing, a lecture by Dr. Clark on Kidney Dialysis, Unit Management and the Administration of Medications. The instructors are currently working on a tape in relation to the decentralized pharmacy service.

Other new teaching tools include a projector for the use of single concept films, programs for single concept projection, and overhead projection transparencies. The film strip/record player, purchased last year by Miss Ada Zimmerman in memory of Dr. Louis Sheffey, continues to be used extensively. We presently have several programs for use with this machine and find them most helpful in enhancing the teaching-learning process. These include programs in — "The Stroke Patient", "I.P.P.B.", "E.K.G.", and "Care of the Patient in a Cast."

Programs purchased for the single concept film projector include approximately 40 cartridges pertaining mainly to specific nursing procedures and growth and development.

Some of our visual aids were purchased for us by the School of Nursing Department of the Women's Board. This committee lends very generous support to the School Program as well as to the Student Residence. In addition to assisting in the purchase of visual aid materials, this committee makes it possible for us to have an educationally oriented Faculty In-service Program each year. Our program this year was presented by Dr. Dennis Hauver, Temple University, on Test Construction.

In view of the trend for Diploma Schools of Nursing to shorten their programs, we have been reviewing our curriculum in an effort to determine



if we have any content which could be deleted from the program without affecting the quality of our graduates. Our Annual Evaluation Meeting will be devoted to this topic. Summaries of Student Course Evaluations, Graduate Questionnaire Studies, and Senior Interview Summaries will be used in conjunction with this evaluation.

Of the 478 Diploma Programs in the United States which are accredited by the National League for Nursing, there are only 55 which continue to have the traditional 36 month program. 24 of these are in Pennsylvania and Jefferson's program is one of the 24.

While we have completed several studies as a result of questionnaires sent to our graduates, we are planning a more current survey and plan to send a questionnaire to the graduates in the class of 1969. We hope that we will have their full support in giving us constructive answers and prompt returns.

We have 34 full time faculty members in addition to the Medical College faculty who teach the basic sciences. 18 of these members are graduates of the school. The committee structure of the faculty organization permits each member to participate in the development of the program.

The Scott Memorial Library of Thomas Jefferson University is expected to be moved to the Library-Administration Building for the opening of classes in the fall of 1970. With four times the present library space and with expanded facilities and staff it is planned to develop a unified medical university library collection. The present medical school and nursing school collections will be integrated.

Among the library's new facilities, readers will find several small study rooms, numerous carrels, a browsing room for recreational reading, a rare book room, and soundproof carrels for audiovisual materials in addition to several reading areas interspersed among stack areas.

Commencement exercises were held on Saturday, September 6, in the Ballroom of the Sheraton Hotel. Dr. William B. Walsh, President and Medical Director of Project Hope was guest speaker. His message to our 87 graduates was enthusiastically received. Linda Murray Croasdale was the recipient of the Nurses Alumnae Association Prize and Rosemarie Colleluori was the recipient of the Thomas A. Shallow Award.

Student activities are more fully described by the students: They include Dances, Teas, the Miss Jefferson Contest, Student-Faculty Christmas Party, Student-Faculty Picnic, etc. Since we have changed our policy in relation to SNAP membership, very little interest has been demonstrated in the organization. Only five students have maintained membership. The basketball team participated in the Southeastern Pennsylvania League for Nursing Basketball League and won 5 out of 7 games. They are planning for a Basketball Banquet in May. The School of Nursing Department provided magazine subscriptions; four subscriptions to the Theatre Guild, the Forum, the Academy of Music, Ballet, etc.

In the Student Residence, we have a staff of eight Housemothers who cover the building on a 24 hour basis. A Student-Faculty Committee has recently completed a second revision of rules and regulations since 1967 and we hope to have them printed for inclusion in a new student handbook in time for the incoming freshmen in September. While some of us do not fully agree with all of the recommendations we hope they will be workable.

As you know, we have been in the Residence since September 1959 and some of the original furnishings have needed replacement. We have recently purchased new carpeting for the Main Lounge and Lobby, new draperies for all student rooms and new bedspreads. By the end of the summer, we hope

to have all of the student rooms repainted.

As graduates, we hope that you continue to be interested in the progress of the school and feel free to stop by to visit if you are in the area. If you live nearby, we usually have available positions.

DORIS E. BOWMAN, *Director*  
*School of Nursing*

### SCHOOL OF PRACTICAL NURSING ANNUAL REPORT TO THE ALUMNAE ASSOCIATION

As this School began its sixth year in the Fall of 1969, the faculty was faced with many challenges. As reported last year, a decision concerning the reduction in number of classes to be admitted each year had been reached, but before the class could be fully recruited, several other changes in operation had been suggested. First, a division of the school year into four quarters to correspond with the general plan of the College of Allied Health Sciences was introduced. Then, because it was felt that the full time program of thirty-five to forty hours per week caused financial hardship for prospective students, a part-time or work-study program was suggested. Because no other practical nursing program in Pennsylvania had ever attempted to present the curriculum in this manner, State Board Approval was sought during the summer months and was received for a twenty-one month, twenty hour per week program. Maternal-Child Health will be the only clinical subjects taught on a full time basis during the last quarter to control the infection factor.

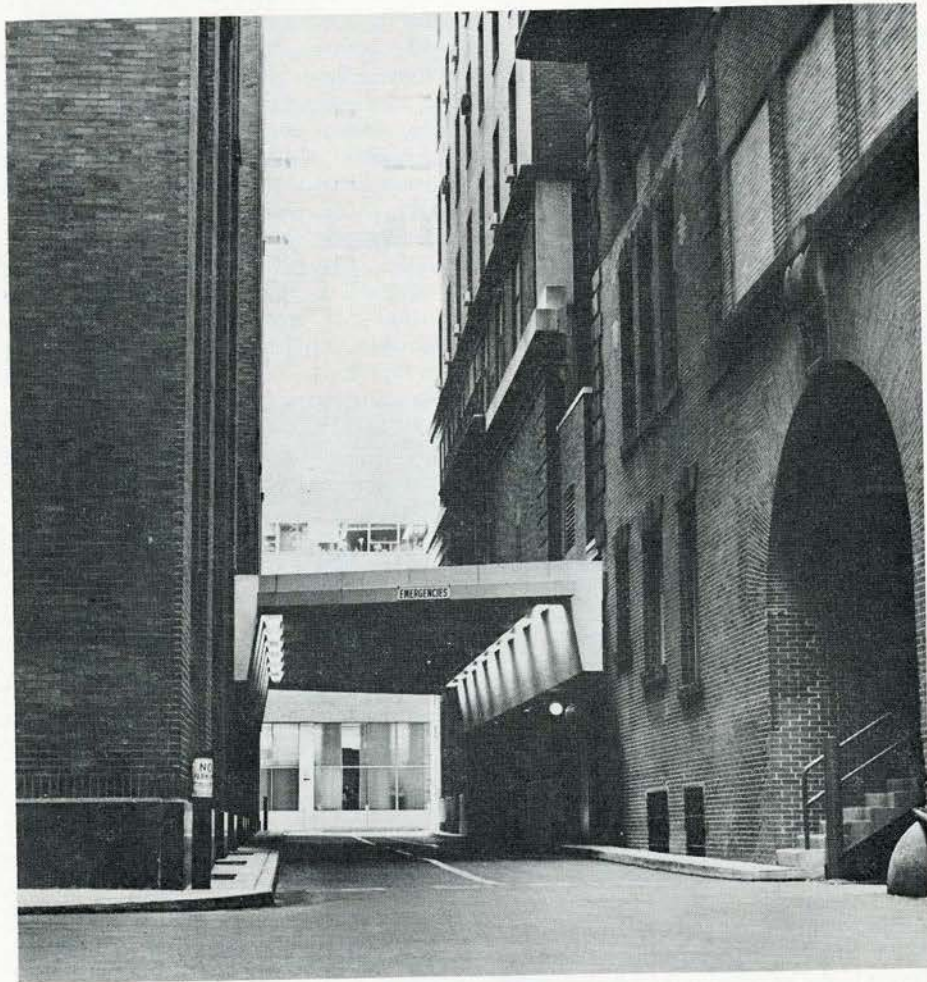


The faculty was also gratified during the past year by the performance of the twenty-six graduates on the State Board examination which resulted in 100% success in obtaining licensure both in Pennsylvania and New York. Several of the graduates of the July, 1968 class will be graduating from local community colleges this year and will become eligible to join the ranks of registered nurses in the State. The Alumnae Association of the School of Practical Nursing has elected officers recently at their first dinner meeting and this Association should soon begin to make its influence felt in much the same manner as the School of Nursing Alumnae.

ELIZABETH J. SWEENEY  
*Director*

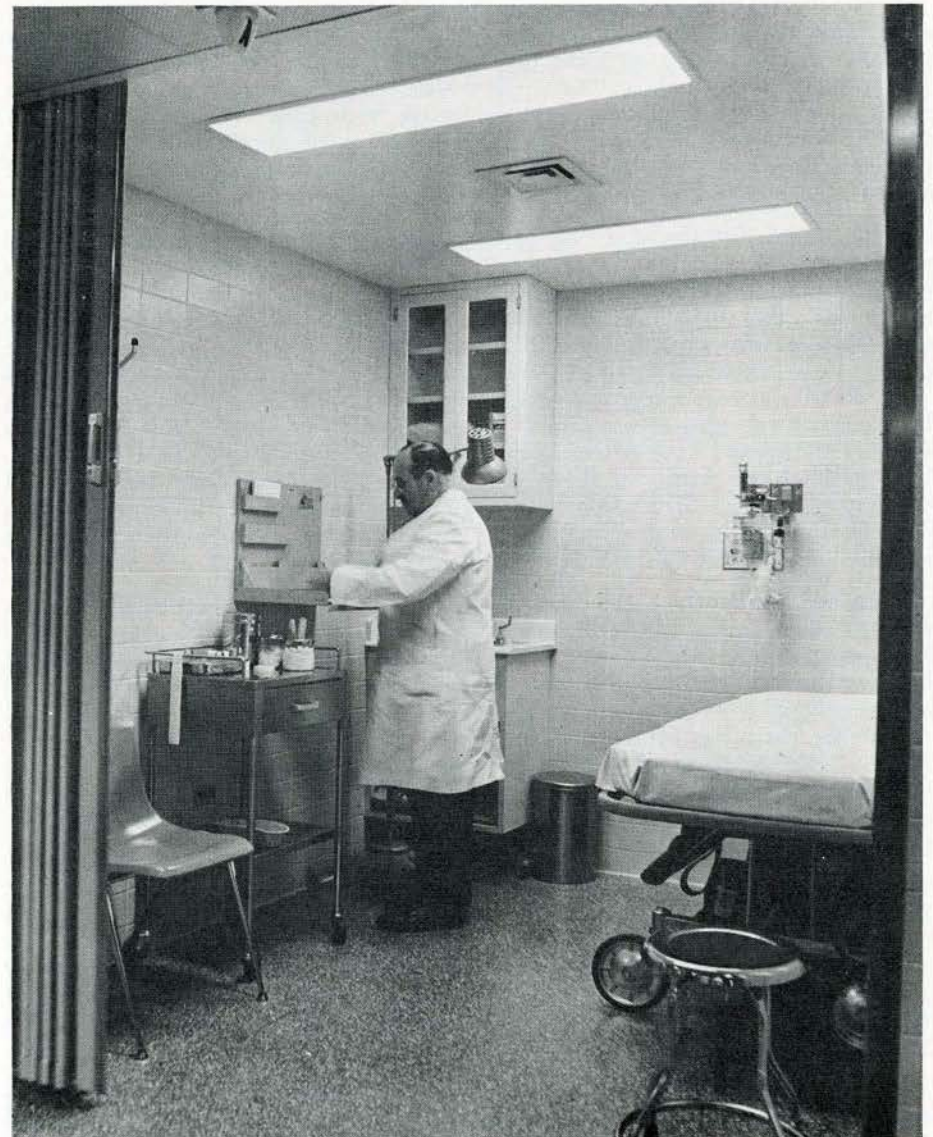


EMERGENCY DEPARTMENT



ENTRANCE

EMERGENCY DEPT.



JOSEPH KEISERMAN, M.D.



JOSEPH KEISERMAN, M.D.  
JEFFERSON MEDICAL COLLEGE HOSPITAL  
PHILADELPHIA, PENNA. 19107  
THE NEW EMERGENCY DEPARTMENT

The arrival of a cardiac arrest in the "old" Emergency Department presented a minor disaster to compound the emergency on the litter. It was necessary to call a slow elevator to raise the patient the eight feet to the Emergency Department level—and it was a slow elevator. Contrast that with today's approach via a covered driveway, protected from rain or snow, the patient delivered thru doors that slide open automatically admitting him right to the cardiac care area. Lost time is kept to an irreducible minimum. The next step is intensive therapy on the street or in the ambulance.

The need for the new Emergency Department was apparent for some years before the planning was even initiated. A firm of fine architects was engaged and members of Jefferson's staff and faculty made contributions as to the needs, flow patterns and planning. The old Pit, once an operating amphitheater, was chosen to be the site of the new department. Here, on the ground floor, were 7000 square feet for emergency service; in the basement (the old Pit) a magnificent auditorium was to be constructed without disturbing basic structural girders anchored into bed-rock and supporting Thompson Annex; the second floor was to be given over to Nursing Service Department. The needs of our times, the ingenuity of architects, engineers and builders, and the expenditure of \$1,600,000 have eliminated the old Pit full of the ghosts of Jefferson greats, and running over with the agonies of countless Jefferson students who like the martyrs of old, had been tested in the arena.

In addition to the cardiac area for two patients with its resuscitation unit, the new department has four pediatric beds, an Eye, Ear, Nose and Throat examining room, four examining rooms, a three bed trauma ward, six observation rooms, a total of nineteen beds. Each bed has total capabilities with a versatile wheeled examining table with a four inch rubber mattress, full examining and therapeutic equipment such as ophthalmoscope and otoscope, oxygen outlet and suction outlet; sphygmomanometers are available on wheeled stands at the bedside. There is a well equipped x-ray department available and staffed for 24 hour service to the emergency needs. A cast room is just across the hall from the x-ray unit.

Two double rooms are available for assigned professional personnel. Facilities are available for supplementary autoclaving purposes. Sterile solutions are kept in a warming cabinet; we have warm blankets constantly available. (Welcome into the 20th Century—the last half, at that). A simple family room is set aside for the use of distressed kin of seriously or fatally injured or diseased patients. Next to the Family Room is a pantry so that indeed we do have the capacity for tea and sympathy.

There is a full line of physiologically compatible fluids for intravenous therapy, dextran for intravascular volume expansion. Blood is quickly obtained from the blood bank. In addition to a small laboratory for urinalysis, hemotocrit determination, staining bacterial specimens, for rapid estimations of blood glucose, acetone, urea nitrogen, there is prompt response from the Curtis Clinic of the Pavilion Clinical Laboratory for immediate blood counts and chemistries; culture sets are available for bacterial studies of all body fluids and surfaces.

All the professional services in the hospital assign resident staff for consultation service, to assist in the solution of diagnostic problems, to determine the necessity for admission to the hospital, to contribute guidance to the therapeutic efforts of the interns. The attending surgical resident is responsible in the multiple injury case, though the anesthetist may be called on to intubate, inhalation therapy to ventilate, orthopedics to supervise the management of broken bones, x-ray to assist with lung or abdominal films and limb or skull studies, medicine to evaluate the heart clinically and its electrocardiographic expression. All of this service can be marshalled within a few minutes with our facilities of space and materials.

In the ambit of cardiac care, from the simple evaluation of chest pain to the complex application of resuscitative measures, the Emergency Department is prepared. The cardiac station has electrocardiography available, and the MAX cart. This is a sophisticated transport cart with a totally contained drug supply for cardiac resuscitation, oxygen tanks, a constantly charged 12 volt battery to power an oscilloscope, a read-out 3 speed electrocardiograph, a counter-shock module (to restore normal sinus rhythm to the dysrhythmic heart). The apparatus has the capacity to rhythmically compress the heart in the closed chest with a controlled force to produce a significant cardiac output of blood; at the same time synchronized co-ordinated ventilation of the lungs by oro-nasal mask or by intra-tracheal tube is effected.

Most of this discussion has stressed what we have at Jefferson. *Why* do we have this new department available? Essentially, because of the institution's commitment to the issue of Community Service, to provide an emergency facility for persons threatened with loss of life or limb. It is to provide professional services for the psychiatric emergency, for serving the traditionally needy poor in the community who depend on the hospital for its professional care, to deliver care to patients who have funds and a personal physician, but feel that their immediate condition cannot await location and arrival of their personal physician. None of this would be possible with the finest Emergency Department and equipment in the world without the interest and commitment of the physicians and nurses and ancillary persons who man the action stations.





### PATIENT SERVICES DEPARTMENT

The "personal touch" is sometimes a missing component of institution care, especially in a large, metropolitan hospital. Thomas Jefferson University Hospital recognized this need in its growing organization and in 1968 established the Patient Services Department under the direction of a Registered Nurse.

The Department philosophy requires of each of its 34 employees a genuine interest in and warmth towards the patients and visitors they come in contact with daily. Treating the patient as a guest, and looking at the hospital from the patient's point of view are consequently the prime directives of the staff of the Patient Services Department.

To implement these goals, the Department has created the position of Patient Relations Coordinator. The incumbent of this position visits all incoming patients on a daily basis, answers questions, listens to problems that may develop and tries to solve them. Sometimes hospital regulations are confusing or annoying to the incoming patient. The Patient Relations Coordinator has the job of explaining the technical reasons that make certain policies necessary and, in some cases, handles valid grievances that may have developed.

Often the Hospital learns from the patient, so the Patient Services Department is a willing sounding board for suggestions and complaints. All incidents are thoroughly investigated and handled to the satisfaction of all concerned. Thus, a patient with a complaint relating to Dietary, Housekeeping, Billing or other non-medical matters need only call the office to be reassured of prompt, tactful investigation and handling of his problem. Medical involvement is handled directly by the Department Director.

Other subdivisions of the department include:

The *Information Center* is staffed by a friendly group of men and women who are anxious to be of service to patients and visitors. They will direct visitors to patient rooms and give room telephone numbers to callers.

Sometimes a difficult public relations problem develops concerning visitors going to floors before regular visiting hours begin. It is the policy of the Hospital to regulate visiting hours for the benefit of the patient in order to give him utmost privacy for morning baths, medication and bed rest. Therefore, many out-of-town and early visitors must be advised and made aware of the patient's needs. Exceptions to the rule are occasionally made, of course, like overnight passes being permitted to the family of critically ill patients.

The *Patient Escort Service* provides friendly and sympathetic men and women to transport patients to and from treatment and therapy areas safely and efficiently.

The *Receptionists* screen all visitors who come into the hospital between 6 p.m. and 8 p.m. to insure the protection of the patients against vandalism and theft in the nighttime hours.

To eliminate miscellaneous calls to the Nursing Stations regarding the condition of patients, the *Patient Condition Reporters* will soon be in operation. This recently conceived Patient Services division will provide a central location with up-to-date, accurate information regarding all patients. This information will be made available to friends and relatives of patients, subject to approval by the physician and family.

To aid non-ambulatory patients to and from awaiting cars and to implement cab service, the Patient Services *Doorman* is on duty.

Other "personal touch" services emanating from the Patient Services Department include location of lost or misplaced articles (teeth, clothing, shoes, jewelry, etc.) and their safe return to their owners, the notification and return of items of value left in the hospital safe by discharged patients and the maintenance of a list of free interpreters to facilitate communications with non-English speaking patients and the staff. Hairdresser and barber services are also available to patients through the Patient Services Department. Are you from out-of-town or in need of a friend to go to the bank? Again, Patient Services will come to your assistance. Annually, on Mother's Day, Patient Services sees that all new mothers receive a complementary carnation.

A special project recently initiated by the Patient Services Department is to brighten different areas of the hospital with the "personal touch" of original oil paintings. Some paintings have been donated and some have been purchased for this purpose. These paintings have been hung on the floors of the more critically ill patients, but as the project grows paintings will be placed throughout the hospital.

In summary, almost every non-medical patient problem, and some medical problems are directed to the Patient Services Department for handling. Everything from a request for a chess board to tracking down the identity of an unknown patient in the Accident Ward or arranging for a Notary Public to visit a patient is taken care of by the Department. Patient Services is much more than a "Complaint Department," it is a unique group of people oriented towards caring for the patient and giving him a "somebody" to confide in, to move him about, and to care for personal needs and problems while from home so that he can feel assured that "somebody cares."

Respectfully submitted,  
ELIZABETH STONE  
Director, Patient Services Department



ANNUAL LUNCHEON



OFFICERS AND GUEST SPEAKERS

*Seated, left to right:* Caroline Masuda, Secretary-Treasurer; Perma E. Davis, First Vice-President; Elizabeth Sweeney, Director School of Practical Nursing; Elizabeth Jackson, Guest Speaker; Doris Bowman, Director of School of Nursing and Guest Speaker; Katherine F. Saunders, President. *Standing, left to right:* Janet Hindson, Social Committee Chairman; Mabel C. Prevost, Assistant Director Jefferson Medical College Hospital and Guest Speaker; Mamie Peace, Director Operating Rooms; Florence Roche, Recording Secretary; Mary Ann Stauffer, Second Vice-President.



Mrs. Saunders and Mrs. Mary R. Godfrey, Class of 1909



Mrs. Saunders with Miss Edith Cypher, Miss Ada Crouse, Mrs. Agnes Owl Madarano—50th Anniversary.



Mrs. Saunders presenting corsage to Miss Elizabeth Heaton, 55th Anniversary.



## SOCIAL EVENTS FOR 1970

On March 3, 1970, the Alumnae held a Buffet Supper and Auction Sale in Jefferson Hall. There were 37 in attendance.

The Auction Sale was a success and many thanks to our Auctioneer, Miss Mary Ann Stauffer. Chances were sold on a Jefferson doll donated by Mrs. Sally B. Baxter. The lucky winner was Mrs. Lenore Schwartz.

The Annual Luncheon was held May 2, 1970 in the Crystal Ballroom at the Benjamin Franklin Hotel. There were 356 in attendance. The highlight of the Luncheon was the dessert, "Flaming Baked Alaska," which was enjoyed by all.

The graduating class of 1970 were guests of the Association. There were 22 members present.

The guests at the head table were:

Miss Mabel Prevost, Assistant Director of the Hospital.  
Miss Doris Bowman, Director of the School of Nursing.  
Miss Elizabeth Sweeney, Director of the School of Practical Nursing.  
Mrs. Mamie Peace, Director of the Operating Rooms.  
Miss Margaret Jackson, Past Director of Nursing Service and Education.

Corsages were presented to the following alumnae.

Miss Elizabeth Heaton, 55th Anniversary.  
Miss Ada Crouse, 50th Anniversary  
Miss Edith Cypher, 50th Anniversary  
Mrs. Agnes Owl Madarano, 50th Anniversary  
Mrs. Mary R. Godfrey, Class of 1909, oldest graduate  
Miss Elizabeth Jones, Class of 1911  
Miss Elsie Tomlin, Class of 1918  
Mrs. Henrietta F. Spruance, Class of 1921, for her loyalty, devotion and active participation in the association.

The flowers at the head table were given to Mrs. Marion R. Barbour, Class of 1941, who was hospitalized on Alumnae Day.

Tours were made of the Emergency Department, Alumnae Room, and Jefferson Hall.

I wish to thank the committee members and alumnae for their assistance and continued support in helping to make the social events a success.

The Annual Luncheon for 1971 will be held May 1st at the Benjamin Franklin Hotel.

JANET HINDSON,  
*Social Chairman*

## MEMBERSHIP

The continuing support and participation in your alumnae association can be measured by more than the continuing high numbers of members.

Many of you took advantage of the benefits your association provides. These include very interesting meeting programs, the annual Auction Sale and dinner, the annual Christmas dinner party, and the funds and scholarships established by your association. Continuation of friendships and pride in your school are further incentives to continue or to resume your membership when your renewal note arrives.

A special welcome back to all new members and a special greeting to our recent graduates of the Class of 1969.

LENORA WEINER SCHWARTZ,  
*Chairman*

## SCHOLARSHIP REPORT

The Clara Melville Scholarship Fund awards two \$500 scholarships annually. All other things being equal, the applicant who has been most active in the Association and who has most nearly completed the degree requirements will be given preference.

Closing dates for applications are April 1 for those desiring to use the scholarship in the Fall or Winter semester, and September 1 for those desiring to use the scholarship in the Spring semester.

The committee did not receive any applications for awards to be granted in the Spring semester of 1970. Three applications were received prior to April 1 for use in the Fall or Winter semester. The award was granted to Lenora E. Schwartz, Class of 1966. Mrs. Schwartz is a student at Temple University and expects to complete credits toward her baccalaureate in the Spring of 1971. She has been a member of the faculty of the school of nursing, belongs to her professional organizations and has been active in the Alumnae Association.

The Scholarship Committee is currently working on the general requirements and procedure to be used in relation to the Adele Lewis Scholarship Fund. The purpose of this fund is to assist a student to pursue her course in the diploma program.

DORIS E. BOWMAN, '42  
*Chairman*

## PROGRAM

On November 4th, 1970, Mrs. Katherine Saunders, alumnae President and Miss Jeanette Plasterer gave an interesting account to the group of the Pennsylvania Nurses Association State Convention in Lancaster.

On October 6th, 1970, Dr. Nemker of Pennsylvania Hospital gave an interesting presentation on Planned Parenthood.

At the January meeting while ballots were being counted, Miss Dolores Heckenberger showed slides taken at the State Convention in Lancaster. Highlights of the Pennsylvania Dutch area were also included in the program.

At the February Meeting, Mr. Thomas Culkin, Assistant Director of the Jefferson Pharmacy Department gave a timely account on new drugs and their nursing implications.

We are looking forward to the October meeting which will be held at the Modern Living Center, Philadelphia Electric Company, 211 South Broad Street. The program will include slides, a tour, a lighting exhibit and possibly a cooking demonstration.

The Program Committee Chairman wishes to extend a sincere thank you to all members and guests who have participated in the monthly programs.

DOLORES H. HECKENBERGER  
*Chairman*



## BULLETIN

The Bulletin Committee has changed the format of the 1970 issue by the use of more individual pictures, wider variety of articles and better spacing.

Remember the "PIT"? Turn to page 12 and read Dr. Keiserman's article about the Emergency Department.

Do you wish to know what has happened at Jefferson during the past year? Read Miss Prevost's article carefully.

Miss Doris, Director of the School of Nursing, has given us valuable information and insight into this department.

Mrs. Elizabeth Stevens Stone, as Director of Patient Services Department and in charge of Escort Services, is to be congratulated for the work she is doing as Head of this new department. Her article describing this work may be found on page .

Mrs. Elizabeth Sweeney, Director of the School of Practical Nursing, tells in her article about the valuable work this department is doing in recruiting and training students.

The Student Nurses have been allotted a section of this issue for articles written by them about subjects which they feel worth while.

Since this is the Centennial of the Jefferson Alumni Association, congratulations are given in the front of this issue. The Department of Public Relations gave us a copy of the Samuel D. Gross portrait (Thomas Eakins) for publication.

The next time you are in Philadelphia and in the vicinity of Jefferson, take a look at the beautiful Scott Library-Administration Building which is nearing completion. At the same time see the statue of Samuel D. Gross, which is on permanent loan to the University.

Please glance through the "Missing" list and if you have any information about any of the graduates, send to Miss Martha Riland, Clerk-Typist.

Time on your hands—work the Crossword Puzzle submitted by Miss Peggy Summers through the courtesy of Miss Margaret C. McClean, Instructor School of Nursing.

There are approximately 350 items of news sent in by Jefferson graduates. We have published all of them and most in their entirety. It has made for delightful reading for the editors, and we appreciate the response. For instance: From the west "The Bulletin is very informative and I enjoy renewing old friendships. Many Thanks." From the Philippines "Am very happy the Alumnae Bulletin has such excellent coverage of Jefferson's progress and look forward to the next issue." And from a southern state "I love nursing and have come to love . . . . hospital almost as much as our beloved Jefferson. How often I think of Miss Josephine Messa's words"—"Remember, young ladies, where ever you go—you are Jefferson!"

On the other hand, occasionally a Bulletin does not reach its proper destination. If in the future you do not receive your copy by a reasonable length of time, do not hesitate to let your Alumnae Association know.

Bulletin Committee  
 JULIA T. McCracken '34  
 EVELYN W. FRAZIER '34  
 SUSANE B. ZAMITIS '66

## WAYS AND MEANS COMMITTEE REPORT

May 15, 1969 to May 15, 1970.

The response to Annual Giving was very good this year. The contributions to the Relief Fund, Building Fund, General Fund, Clara Melville Scholarship Fund and Adele Lewis Student Scholarship Fund, brought the total amount to \$4,275.00.

Thank you again for your continued support and generous giving at this time of the year.

All contributions received after May 15, 1970 will be acknowledged in the Bulletin for 1971.

Following is a list of contributions and contributors according to classes and the class totals.

BETTY PIERSOL, '34  
*Chairman*

MARGARET SUMMERS, '41  
*Co-Chairman*

Honorary Member—\$5.00	Florence Kauffman	Mary S. Malick
Katherine Childs	Sara H. Corson	Edna Scott
1909—\$10.00	1924—\$45.00	Laura C. Short
Mary Godfrey	Josephine Lucas	Ethel R. Groundwater
1911—\$50.00	Mildred F. Semler	Elizabeth S. Diamond
Elizabeth Jones	Kathryn Tash	1929—\$95.00
1914—\$5.00	Blanche S. McGuigan	Helen B. Andrews
Marguerite Barnett	Lillian H. Pratt	Frances Wildonger
1915—\$30.00	Beatrice O'Hara	Mabel Prevost
Mattie Allen Turner	Mary W. O'Connor	Jane M. Ezell
Elizabeth Heaton	1925—\$95.00	Blanche Henderson
1917—\$30.00	Clara Luchsinger	Charlotte M. Burt
Frances Grove	Mildred K. Okaniski	Zelda R. Mencer
Marian Smith Lauffer	Elizabeth H. Farmer	Ann W. Candler
1918—\$5.00	Nora S. Fry	Mabel Nutter
Effie Girton	Edith B. Ogden	1930—\$96.00
1919—\$15.00	Delilah H. Naugle	Ann Gambal
Nora B. Dwyer	S. Elizabeth Scotton	Emma M. Smeck
Hilda S. Cole	1926—\$42.00	Virginia Avery
Hattie W. Book	Mary G. Patterson	Minerva L. Welch
1920—\$35.00	Mary Bonenberger	Ruth F. Haisey
Ann H. Willson	Marjorie Workinger	Muriel S. Canis
Anna C. Trego	Josephine C. Dickerson	Gertrude G. Evans
Henrietta Bigney	1927—\$68.00	Edith Lane
Ada Crouse	Martha Riland	Virginia M. Bruner
1921—\$35.00	Anne Phillips	Minnie U. Humphrey
Jennie Kutz	Lorraine K. Mayers	Hazel Oberdorf
Henrietta Spruance	Pauline Mc. Gillen	Pauline P. Siegle
Jeanetta Wolf	Isabelle K. Heverly	Annette M. Whitehead
1923—\$25.00	1928—\$160.00	1931—\$93.00
Clara Brunner	Clara C. Boyles	Elizabeth Y. Gaul
C. Margaret Donaldson	Dorothy S. Bennett	Evelyn R. Arnold
	Katherine F. Saunders	Emma Bahner
	Edna S. Richards	Mary E. P. Kutz
	Margaret M. Lauchle	Irene R. Jones
	Phyllis Zeitler	Blanche Ford
		Madelyn R. Knapp
		Agnes K. Henry



Laura P. Matthews  
Sue E. Wells

1932—\$75.00

Elizabeth Ent  
Mildred B. Price  
Marie S. Maxwell  
Emma P. Kelly  
Dorothea B. Watson  
Mary K. Bistline  
Gail G. Willard  
Lucille S. Harpel  
Thelma S. Morris

1933—\$65.00

Catherine G. Paine  
Kathryn Rhule  
Margaret D. Moscarella  
Ruth B. Fennell

1934—\$151.00

Elizabeth Z. Sedway  
Ruth D. Wolfe  
Evelyn W. Frazier  
Julia T. McCracken  
Kathleen W. Armitage  
Laura K. Williams  
Mildred M. Smith  
Anna J. Gehrke  
Mildred D. Estrada  
Betty Piersol

1935—\$90.00

Mary R. Evans  
Blanche Rushin  
Mary C. Moore  
Marian B. Howe  
Mildred Crone  
Priscilla V. Margerum  
Evelyn Curran  
Margaret A. Tunnard  
Ruth B. Judd  
Ellen C. Teague  
Edna S. McAvoy  
Esther P. Benner  
Agnes S. Picone  
Jane S. Ryan

1936—\$153.00

Evelyn Dute  
Lydia K. Yerkes  
Margaret Mc. Semisch  
Elizabeth S. Stone  
Margaret P. Ransom  
Marian E. Smith  
Mary F. Wiley  
Elinor F. Brosious  
Mary R. Menedez

1937—\$105.00

Caroline Masuda  
Areta M. Rule  
Laura Z. Johnson  
Harriet S. Zeller  
Pauline D. Leager  
Florence S. Keffer  
Margaret C. Taylor

Kathryn Rorabaugh  
Alice I. Fulmer

1938—\$40.00

Anita B. Eisner  
Mary R. Copeland  
Madeline Ullam  
Elinor M. Wentzell

1939—\$130.00

Dorothy P. Lepley  
Virginia Foor  
Johanna L. Wagner  
Irene W. Anslow  
Harriet O'Connor  
Ruth S. Stickle  
Olga D. Mitchell  
Charlotte S. Stacey  
Lorraine P. Phillips  
Mildred G. Durham  
Dorothy Ranck

1940—\$200.00

Hope K. Mood  
Helen J. Enterline  
Bernice G. Sprecher  
Alice M. Moore  
Elizabeth P. Fuhse  
Sara L. Werstler  
Marian Tracey  
Dorothy C. Rosenberg  
Norma Z. Smith  
Mary E. Fleming  
Sara V. Gotternoll  
Esther A. Musselman  
Catherine C. Lambert  
Ruth P. Frazer  
Averene S. Murphy  
Viola G. Hyman  
Margaret F. Reed  
Ellora E. Meyer  
Ellen R. Carlton  
Alda N. Knodel

1941—\$75.00

Perma E. Davis  
Kathryn D. Quackenbush  
Harriet Werley  
Frances Rumberger  
Ruth Shaner  
Margaret Summers  
Margaret E. Wallett  
Gene R. Jerabek

1942—\$160.00

Grace J. Dunkleberger  
Anna T. Reganis  
Dorothy Cloud  
Doris Bowman  
Rhoda B. Weisz  
Anna A. Krall  
Ellen McC. Steward  
Alice C. Boehret  
Myrtle V. Berman  
Sally McH. Luscombe  
Mary Jane L. Braid  
Gladys R. White

Dorothy R. Nifong  
Dorothy E. Burns  
Beatrice R. Snyder  
1943—\$50.00

Jean F. Kehm  
Vivian Moyer  
Margaret B. Scull  
Kathryn R. Combs  
Betty M. Shaw  
Esther M. Kahn  
Mary K. Cupp  
Ruth G. Painter  
1944—\$17.00  
Charlotte S. Ellenbogen  
Betty Lee Elliott  
Maureen S. McCool

1945—\$248.00

Betty M. Greenwood  
Eleanor W. King  
Elizabeth Louise Snyder  
Evelyn S. Sell  
Florence S. Howanitz  
Caroline R. King  
June M. Jacobs  
Jane B. Mack  
Helen D. Anderson  
Elaine A. Barrick  
Anna Kuba  
Patricia Crawford  
Marjorie J. Wilson  
Martha B. Tomassetti  
Betty D. Heuston  
Carolyn M. Longsderff  
Helen M. Raphaelson  
Lenore B. Strigari  
Betty R. Laggner  
Louise K. Carver  
Betty U. Attanasio  
Dorothy E. Novak

1946—\$145.00

Freida Mosser  
Jeanne Burkins  
Betty K. Frommelt  
Nelmah F. Shaffer  
Jeanne Supplee

1947—\$150.00

Margaret Cossman  
Barbara H. Marks  
Dorothy M. Sturr  
Grace H. Mease  
Arlean Miller  
Virginia S. Lawrence  
Wahnetta T. Carosi  
Sandy S. Schwab  
Maria B. Hunter  
Betty S. McConnell  
Elizabeth Prismoek  
Ruth G. McCormick  
Catherine Prendergast

1948—\$70.00

Phyllis G. Courtney  
Sara N. Boswell  
Virginia S. McCrone

Joanne H. DeRose  
Jean S. Wighamman  
Mildred F. Hines  
Betty L. McDonald  
Rachel I. Herbert  
Betty T. Daughenbaugh  
Mary L. Haupt

1949—\$90.00

Theresa B. Poli  
Priscilla K. Nicholson  
Lorraine Roche  
Lorraine M. McCall  
Helen E. Barrett  
Esther H. May  
Louise D. Strayer  
Hazel S. Kogler  
Lois Pennypacker

1950—\$169.00

Ellen B. Stahl  
Nancy H. Orsini  
Rita K. Bolinsky  
Ann W. Breach  
Mary M. Brumbaugh  
Joan C. Clauss  
Clara C. Flynn  
Mary O. Foy  
Nancy D. Konstanzer  
Miriam S. Bower  
Barbara F. Ackerman  
June M. Fujita  
Helen S. Righter  
Sara Y. Konstanzer  
Jean H. Larkin  
Shirley M. Hoffert  
Lois K. Jernstrom  
Twila A. Sanborn  
Janet Hindson  
Rose G. Mulligan

1951—\$55.00

Marian T. Williams  
Dolores P. Gorham  
Jane H. Aires  
Jeanne S. Verbinski  
Lorraine A. Jeitner  
Nancy Thompson  
Dorothy D. LoSasso  
Jeanette Plasterer

1952—\$88.00

Eloise Hippensteel  
Jane B. Maxwell  
Margaret F. Keates  
Ann S. Stout  
Nancy Stoicovy  
Nancy G. Wilhelm  
Ann S. Nesbella  
Albina V. Stackhouse  
Alice D. Chase

1953—\$135.00

Madelyn D. Hanratty  
Cathleen Keating  
Jane R. Lemmon  
Joyce W. Mest

Susann O. Carney  
Janet E. Meredith  
Gertrude L. Amend

1954—\$71.00

Betty R. Stone  
Joan McCusker  
Doris H. Schramm  
Mary Lee S. Adams  
Jean T. Dempsey  
Mary Ann Stauffer  
Patricia N. Yurick  
Sarah H. Wagner  
Louisa M. Hoch

1955—\$55.00

Mildred M. Kline  
Barbara G. Smith  
Audrey T. Priga  
Charlotte H. Orvis  
Dawn D. John

1956—\$75.00

Wilhelmina F. Crawley  
Norma Dawson  
Patricia S. Brown  
Ann Kneidel  
Florence Roche  
Joyce W. Hagopian  
Shirley O. Doernte  
Marlene A. Mika  
Helen W. Hervada  
Betty D. Miller

1957—\$30.00

Carol H. Gray  
Rose Marie Tomasello  
Jeanne S. Abbott  
Ann K. Snyder

1958—\$107.00

Annunciate S. Doneman  
Darlene S. Bleile  
Christina L. Rodgers  
Mulveena K. Baldauf  
Doris G. Stephens  
Rosemary E. Moore  
Barbara W. Kelso  
Joan R. Randles  
Marie S. Keenan  
Barbara J. B. Garzon  
Sylvia T. Hause  
Shirley H. Walker  
Lois B. Toomey

1959—\$101.00

Arlene B. Baumann  
Virginia K. Fritz  
Joanne S. D'Alonzo  
Jane A. Hudson  
Bettyann H. Kosko  
Elizabeth Ossman  
Anne M. Jones  
Judith W. Bloes  
Nancy D. Crawford  
Joanne L. Peterson  
Jacquelin W. Long  
Carol Staas

Joan Hirschkind  
Nancy R. Butler  
Marlene S. Ascolese

1960—\$42.00

Madeline H. Glass  
Barbara Z. Umbenhauer  
Carolyn S. Fezzi  
Judith H. Stauffer  
Loretta O. Dempsey  
Judith Romack  
Bette R. Light  
Carolyn M. Goepfert  
Barbara E. Nevara

1961—\$102.00

Mary Parrish  
Marion H. Garrey  
Elizabeth McQ. Larkin  
Beatrice Rhoda  
Patricia M. Calhoun  
Arlethia L. Wright  
Marjorie R. Berrier  
Barbara Fullerton  
Susanne W. Jacobson  
Loretta D. Cuminghame  
Roberta E. Brown  
Edrie W. Brennan  
Minnie W. Wright

1962—\$50.00

Susan E. Leake  
Janet Blumberg  
Joyce McH. Kormanis  
Marian K. Hammond  
Janice B. Billick  
Phyllis S. Johnson  
Patricia T. Goetz  
Carolyn W. Bewsher

1963—\$89.00

Joan L. Murray  
Margaret Mackenzie  
Joann Brosious  
Lucille Scriber  
Shirley M. Weller  
Nancy G. Goodson  
Suzanne V. Blackburn  
Maureen Maguire  
Ann C. Musitano  
Margaret H. Bethanis  
Dorothy F. Brown  
Maryanne D. Vernallis  
Alessande M. Barnes  
Theresa R. Cooke  
Beatrice S. Ambuso  
Frances T. McGill  
Loretta S. Kurland  
Myla Einwechter  
Mary L. Keim

1964—\$75.00

Virginia Best  
Patricia Lee Gardner  
Mary Lou W. Schubel  
Jeraldine M. Kohut  
Carol P. Teplich



Barbara L. Tredick  
Lynn McM. Nagatani  
Elizabeth Reed  
Phyllis S. DeJesse  
Jane Cox Gay  
Carol B. Miller  
Barbara N. Anderson  
Kathleen L. Jones

1965—\$87.00

Cheryl K. Weber  
Rita M. Mendel  
Dorthea C. Hamilton  
Barbara J. Keller  
Elisabeth M. Zentner  
Marilyn K. Costello  
Judith A. Getz  
Judy C. Flynn  
Ellen M. Whitehorne  
Carolyn J. Walchak  
Janet C. Walker  
Judith L. Moyse  
Barbara D. Schnaeder  
Karen L. Boyers  
Adrienne L. Daughenbaugh

1966—\$110.00

Judith H. Endriss

Judith N. Horton  
Joan S. Cupic  
Judith H. Hoefle  
Mary Lou Smith  
Barbara S. Ruehl  
Judith K. Tracy  
Donna M. Kocher  
Susane B. Zamitis  
Edna DuC. Moan  
Brenda M. Hethcate  
Jean Lashinski  
Nancy S. Brainard  
Tracy V. Booth  
Mary K. Kearney

1967—\$69.00

Karen Neubeck  
Ellen B. Freeze  
Gail Lee McK. Ford  
Paula J. Laros  
Karen L. Bedell  
Carol J. Shaeffer  
Elizabeth O. Robleto  
Linda Stregre  
Jill L. Simpson  
Joan R. Darden  
Sharon J. Rood

Jane K. Kriebel

1968—\$100.00

Jeanne M. Kane  
Shirely Crum  
Nancy V. Jones  
Bonnie I. Siegrist  
Shirley D. Poling  
Karen B. Del Compo  
Regina R. Friedman  
Carol C. Leventhal  
Patricia Moffitt  
Mary E. Squires  
Ann Vogel

1969—\$77.00

Marie Armstrong  
Annie Eldridge  
Jean Hellerstrom  
Eleanor R. Suback  
Linda Barbour  
Daveen Jones  
Roberta Farrell  
Irene Harris  
Elvira Paolette  
Mary K. Hancock  
Alberta Davis  
Linda Lake

#### In memory of:

Janet Overdorf Nackerud, class of 1944—\$25.00 to the Clara Melville Scholarship Fund by Katherine Naugle Painter, class of 1944.

Florence Hawke, class of 1927—\$25.00 to the Adele Lewis Student Scholarship Fund by her sister, May Hawke.

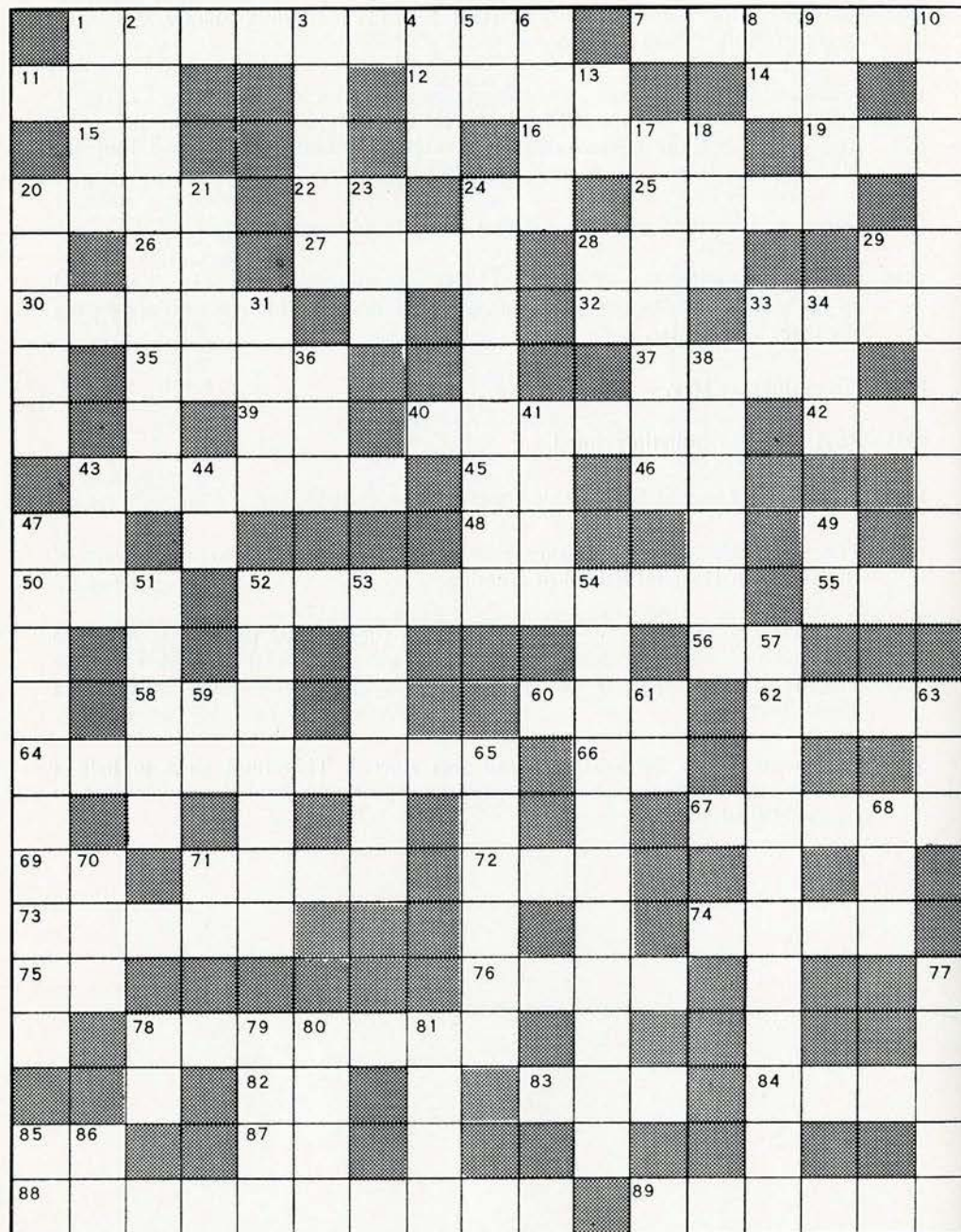
#### PROGRESS OF THE ALUMNAE ASSOCIATION

- 1891—Founding of the School of Nursing (with a two year training course), organized by Chief Nurse; Miss Ella Benson.
- 1895—Jefferson Nurses' Alumnae Association was organized by Miss Susan C. Hearle, a graduate of the Training School of The Philadelphia General Hospital. Miss Hearle was an English woman and had received her first training under Florence Nightingale.
- 1912—Jefferson Nurses' Alumnae Association Relief Fund was established.
- 1932—The first Jefferson Nurses' Alumnae prize was awarded. This prize is awarded to the member of the graduating class who attains the highest average during the three year course.
- 1933—First Alumnae Day.
- 1935—First Alumnae Bulletin printed.
- 1936—The Nurses Alumnae Scholarship Loan Fund was established.
- 1942—The Clara Melville Scholarship Fund was made available to a graduate of the Jefferson Hospital School of Nursing.
- 1956—The first Thomas A. Shallow Memorial prize (donated by the Nurses Alumnae Association) was awarded. This prize is awarded to the member of the graduating class who has demonstrated the greatest proficiency at Operating Room Technique.
- 1969—The Adele Lewis Scholarship Fund was started. This fund aims to help a worthy student nurse pursue her course; purpose and general requirements to be established later.



Crossword Puzzle by Margaret C. McClain

Instructor School of Nursing



ACROSS

1. Jefferson's founder
7. Current President of Jefferson
11. A government agency
12. Above
14. A means of transportation in Philadelphia—abbr.
15. A paved road—abbr.
16. Gift to each new graduate from the Alumnae Association
19. Medical abbreviation for a cold
20. Dean Goldschmidt's first name
22. Conjunction
24. Slang for Mother
25. At one time he supported proposed merger of Jefferson and the University of Pennsylvania
26. Degree from a Junior College
27. One of the Great Lakes
28. To soil
29. Where patients learn to walk again—abbr.
30. First name of current Director, School of Nursing
32. Suffix meaning alcohol
33. Branch of Armed Services in which Jefferson had its hospital
35. Relating to the ilium
37. Nurses hope all patients will do this
39. High peak—abbr.
40. Inventor of Heart-Lung Machine
42. Where medical students study anatomy—abbr.
43. First directress of the School of Nursing
45. Lupus Erythematosus—abbr.
46. Density—abbr.
47. A prefix meaning together
48. A California city—abbr.
50. Professional nurses' organization—abbr.
52. Alma Mater
55. Of age
56. Transit time of the blood through the heart—abbr.
58. Incorporated—abbr.
60. The first woman
62. Half
64. School of Nursing Yearbook
66. Abbreviation for Julie McCracken's responsibility
67. Subject of Thomas Eakin's famous canvas
69. Chemical symbol for Beryllium
71. A Christmas greeting
72. Opposite of cold
73. Group most professionals do not join
74. What the James R. Martin Residence is to students
75. Person responsible for diet instruction
76. A sound
78. Alumna who became Assistant Director of the Hospital
82. Nickname for Violet
83. A resting and eating place
84. Pertaining to tendon
85. Where surgery is performed—abbr.
87. Prefix meaning into
88. Alumnus who recently was named Secretary of Health and Welfare for Pennsylvania
89. Hospital division for diseases of the chest

DOWN

1. Combining form denoting aversion
2. First name of Alumnae Association President
3. Miss Darling's first name
4. Milk
5. Preposition
6. Miss Shoemaker's first name
8. Prefix meaning back
9. One of Jefferson's colors
10. Number of Jefferson's Base Hospital during two World Wars
13. By mouth—abbr.
17. A famous Jefferson surgeon
18. The organ of hearing
20. Trustee Higginbotham's Federal appointment
21. Horny cell structure of the epidermis
23. From
24. Directress of Nurses 1915-1937
28. Chemical symbol for molybdenum
29. Afternoon—abbr.
31. Father of modern Obstetrics and Gynecology
33. Department responsible for projectors, tape recorders, etc.—abbr.
34. Color of cross symbolic of aid
36. Combining form meaning the ear
38. Purpose
41. To carry
44. Corner on which the Pavilion is located—abbr.
47. Town in which Jefferson was founded
49. A college degree
51. A seed used to flavor food
52. Inventor of the Brochoscope
53. The Black and Blue Ball
54. Anniversary year of the School of Nursing
57. A Jefferson publication in cooperation with Blue Cross and Blue Shield
59. A negative response
61. Effective dose—abbr.
63. Who gets your money before you do—abbr.
64. Editor of AJN
67. What you do through the eye
69. Opposite of beginning
70. Opposite of yes
76. Director of Nursing Service
77. Measure of hydrogen ion concentration
78. Opposite of odd
79. A street north of Market Street
80. Everyone has one
84. Prefix signifying in front of
85. Where old charts are kept—abbr.



## "MISSING GRADUATES"

Help us locate these graduates. If you have information about any of the following, please send to the Alumnae Association.

MARTHA RILAND, *Clerk-Typist*

1913—Helen C. Gibb	1955—Margaret Deming Schleyer
1929—Mary Bauder Beard	1956—Virginia Handy Putney
1931—Ruth Menicon	1956—Mary Hennigan Sherman
1931—Pauline Mebane	1957—Benedetta DeGenove Ucciferri
1933—Isa King Ewing	1958—Geraldine Roulston
1934—Nellie Clapsaddle	1958—Josephine McNamara
1934—Jessie Duff Mulcohy	1959—Betty Colleen Mooney
1934—Wanda Harrison Sachs	1959—Ellen King
1934—Helen Corson Smith	1959—Nancy Reinhart Butler
1934—Elizabeth Jackson	1959—Janet Klinestiver Mosley
1934—Ann Sherman Bryan	1960—Sara Lipan Callanen
1934—Louise Stahle Adams	1961—Janet Lutz Hogan
1934—Grace Thomason Mitchell	1961—Anna Jones Bookter
1934—Harriet Zeigler Mertz	1961—Ann Barron McBeth
1942—Georgianna Wonder Green	1961—Betty Smigelski Bready
1944—Janet Beyer	1961—Julie Miller Wren
1944—Mary Myhlertz Baback	1962—Joan Campbell Moselle
1946—Betty Noble Gurewich	1962—Elizabeth Liebel Stewart
1947—Frances M. Saltzer Shaub	1962—Pamela Smith
1947—Claire Murphy Boylan	1962—Carol Frame Green
1948—Lillian Casavay Bagemery	1963—Judith Frizell Wood
1948—Kathryn McDonald	1963—Beatrice Stabile Ambruso
1949—Marjorie Ball Hoeck	1963—Mary Greenwood School
1949—June Sassman Trout	1963—Phyllis Shuey
1949—Frances Dowiak	1965—Claudia Bennett Penders
1950—Audrey Schersching Atkinson	1965—Diana Lahti Hodges
1951—Audrey Roberts Reynolds	1966—Mary Jo Webb
1952—Filomena DeLuca	1966—Leslia Rogers Wagner
1952—Ada Miller Mathews	1966—Marilyn Paynter Sharkey
1955—Susan Simoneau	1967—Ledjia Baird

## RESUME OF MINUTES OF ALUMNAE ASSOCIATE MEETINGS

SEPTEMBER 9, 1969  
24 members present.

All furniture has finally arrived for the Alumni Room. All are welcome to stop in to see it. It was suggested that we put the Alumni Room on the tour list for next year's luncheon day.

As of last week, we are known as the Thomas Jefferson University School of Nursing. There was much discussion as to the type of banner that would be appropriate. Mrs. Spruance will look into the matter.

Graduation ceremonies were held last Saturday. Our 87 girls looked lovely. Dr. Walsh, the Head of HOPE, delivered a beautiful address and certainly backed the 3-year diploma program.

A check for \$325.20 was returned to the Association from the two students who attended the N.S.N.A. convention in Detroit in mid-May. The girls, Lois Garforth and Anita Gilbert, also sent a lovely thank you and will give a resume of their experience at our next meeting.

A thank you was received from Alice Henry, class of '31, for help with her hospital bill.

A thank you was received from Lenore Schwartz for the many kindnesses during her hospitalization.

A letter was received from Judith Lawrence, '66, declining the scholarship. She is now attending the University of Pennsylvania on a government traineeship for a full year of nursing studies.

It was suggested that we get our donation to the United Fund in early this year. Motion was made and approved to give \$150 again this year.

Delegates for the state convention to be held at Host Farm, Lancaster, Pa., the 27th through 31st of October, were: Mrs. Saunders, Valeria O'Donnell, Erma O'Donnell. Four alternates were also selected.

The 50-50 was won by Miss Smeck.

OCTOBER 7, 1969  
23 members present.

Miss Dute reported the following hospitalized: Mrs. Moffitt Whitehead, '20, and Pattie O'Connor, '39.

It was announced that the Christmas Party would be held December 9, 1969, at the Jefferson Hall.

Motion was made and approved to give each delegate to the P.N.A. Convention \$250 for expenses.

A letter was received from Marjorie Workinger in reference to Viletta Emig, who is recovering nicely from a nephrectomy.

Thank you's for the memorial cards were received from the families of Ethel Artman and Viola Comsick.



A thank you note was received from Kay May Silver for the many kindnesses shown her during her hospitalization.

A thank you note was received from Doris Bowman for the checks for the T.A. Shallow Award and the Nurses Alumnae Association Prize.

Motion was made and approved to allot \$250 for student representation at the P.N.A. convention.

By-laws—When the last change was affected, one important matter was overlooked, the deadline of 8:15 P.M. for closure of the ballot box. There was much discussion as our meetings are now an hour earlier. Motion was made and carried that notices be sent with the ballot stating the deadline of 7:15 due to the new meeting time.

Lois Garforth and Anita Gilbert, the students who attended the N.S.N.A. in Detroit in May, gave interesting and informative reports of their experiences.

The 50-50 was won by Evelyn Frazier.

NOVEMBER 3, 1969

20 members present.

The following Alumnae were reported hospitalized: Hattie O'Connor, '39, Mattie Turner, '15, Marion Ramp, '51, Anne Vogel, '68, Martha Riland is in Fitzgerald Mercy Hospital and Evelyn Dute has just returned home from Wills Eye Hospital.

A representative of Planned Parenthood, Dr. Nembser of the Pennsylvania Hospital, gave a very informative talk on contraception in its present day aspects.

Mrs. Stone announced the date for the Christmas Party as December 9, 1969, at 6 P.M., in Jefferson Hall. There are a few surprises in store and of course Santa will distribute gifts. The invitations will be mailed this week. You and your friends are most welcome to attend. The buffet supper will be \$3.50, and there will be a cash bar.

Miss Summers reported that just today the sum of \$25 was received from May Hauck in memory of Florence Hauck. Said amount was placed into the A.M. Lewis Scholarship Fund.

Miss Bowman presented a draft compiled by the Committee of the A.M. Lewis Scholarship Fund. A copy of the draft was given to all members present. As it was read, there was some discussion and comments. The award itself was not given too much attention and it was thought best to hold the report over till the February meeting. This will allow time for the members to study the draft and give appropriate suggestions or criticisms.

The following ballot was presented for the January election:

Board of Directors: 3 of the following to be elected:

Miss Oberdorf	Miss Piersol
Miss Skvir	Miss Heckenberger
Miss Summers	Mrs. Barbour

2nd Vice-president:  
Mrs. Stone

Miss Stauffer

President:

Mrs. Zamitis

Miss Hippensteel

Miss Hughes

After an overwhelming response from the floor, Mrs. Kathryn Saunders agreed to accept the nomination for president also. The members as a group moved to accept, as presented, the nominees for the ballot.

The 50-50 was won by Gail Willard.

DECEMBER 9, 1969

Christmas Party held at Jefferson Hall.

JANUARY 6, 1970

18 members present.

Miss Dute reported that Miss McGarvey, '69, was hospitalized at the present time.

Since ballot counting can be a rather long and tedious procedure, Miss Heckenberger was kind enough to show her slides of the Lancaster area which she had taken at the P.N.A. convention. They were quite charming, especially interesting were those of the Amish.

Mrs. Stone offered her gratitude to all who attended, and especially to those who helped with, the lovely Christmas Party. A special thanks went to our "Santa", Miss Stauffer.

Of 47 reservations, 46 attended. A cash gift of \$5 was received. Lovely door prizes were donated by Gail Gonder Willard, Mary Ann Stauffer and Betty Stone. A total of \$212.06 was turned over to the Treasurer, Mrs. Masuda.

Mrs. Summers reported that a memorial gift of \$25 was added to the Clara Melville Scholarship Fund and \$15 added to the General Fund.

Thank you notes, for the planters received at Christmas, were received from Mary Godgried and Jeannette Wolf.

An acknowledgement and thank you was received from the Cancer Research Institute for our contribution.

Thank you notes, for Relief Fund Assistance, were received from Ann Vogel, '68, and Hattie O'Connor, '39.

A thank you note was received from Emma Smeck for the cards and sympathy during her recent bereavement.

The question arose as to why the Alumnae mail is delivered across the street to the Nurses Residence. Since the Alumnae room is in the hospital proper, it was suggested that we look into the matter of procuring a box in the hospital. It was made a motion, seconded, and approved for the Recording Secretary to write a letter to Mr. Braden, the Supervisor of Building Services, on this matter.

The votes are in!!! Elected were:

President	.....Mrs. Saunders
2nd Vice-President	.....Miss Stauffer
3 Board Members	.....Miss Summers, Miss Piersol and Miss Heckenberger

The 50-50 was won by Mrs. Schwartz.

FEBRUARY 3, 1970

18 members present.

Miss Heckenberger made a request for suggestions on the Program. Should the program be medical, surgical oriented, or should there be a variety?



Would the group enjoy films? Should we open the program to non-members? To all these questions there was an affirmative answer and motion was made and approved to invite any non-members to come. It was also recommended that the October, January, February and/or April program begin at 8:00 P.M.

Miss Plasterer reported that Ann Vogel, '68, was hospitalized at the present time.

Miss Hindson, Social Chairman, announced that plans are under way for the March 3rd buffet and auction. Please bring a donation for the sale. Guests are welcome.

It is also time to start thinking of the annual luncheon. The graduation class will again be invited as guests of the Alumnae.

Miss Piersol, Chairman of the Ways & Means Committee, announced the addition of \$58 to our funds from January 6 through February 3, 1969.

Banner—A lot of time and searching has turned up three companies who do this particular job. The prices vary, as do the workmanship. Mrs. Spruance gave the specifics of all three companies and then motion was made for her to discuss the matter with Miss Bowman and student council to get their ideas and suggestions.

Mail Delivery—The letters of correspondence between Miss Roche and Mr. Braden were read. Starting this week, mail will be held in the hospital where it will be picked up at the mail room window, instead of the Nurses Residence.

A thank you note was read from Linda Croasdale for the Scholarship Award at graduation in September '69.

Thank you notes were read from Mabel Miller, Emma Knock and Violetta Emig for the various Christmas gifts they received.

Dr. Prince died this past week. A memorial has been started in his name for delivery room equipment. Motion was made and approved that we donate \$50 to this memorial.

The A.N.A. Convention is the first week in May in Miami. The Association usually sends two members to attend. Nominees and alternates were:

- A. The President—as a duty ..... Kathryn Saunders
- Alternate—1st Vice-president ..... Perma Davis
- B. 2nd Delegate ..... Florence Roche
- Alternate ..... Miss Watkins

It was recommended that \$500 be allotted the delegates, and \$250 be given to the School of Nursing for student representatives.

The 50-50 was won by Mrs. Curran.

MARCH 3, 1970

Dinner and auction sale held at Jefferson Hall. 37 attended.

APRIL 7, 1970

25 members present.

The guest speaker for the evening was Mr. Thomas Culkin, Pharmacist at Jefferson. An enlightening lecture about the new drugs on the market in 1969 and their nursing implications was the topic.

Miss Plasterer, Sick & Welfare Chairman, reports Elsie Skvir, '48, and Miss Grajzeco, '64, hospitalized at present.

Miss Piersol, Ways & Means Chairman, reported that 2,697 Annual Giving letters were sent out. Of these, 48 have been returned with wrong addresses. Response from 255 has brought:

Relief Fund .....	\$195.00
Scholarship Fund .....	125.00
General Fund .....	129.00
A. M. Lewis Fund .....	879.00
Bulletin .....	62.00

Total .....\$1,390.00

Miss Hippensteel, member of the Scholarship Committee, addressed the group in Miss Bowman's absence. First, there are three applicants for the Scholarship so far—recommendations to be made at the May meeting. Secondly, the general content format was again presented for the student scholarship fund. Questions arose as to the deadline for the scholarship, reimbursement if course not completed, and receiving a second year if given the previous year. Motion was made from the floor for the above changes to be considered by the committee and represented in the September meeting.

At the February meeting, motion was made and approved to allot \$250 to the students for S.N.A.P. Since only one student belongs from each class (a total of 3), it was decided to recind the motion of giving this money to attend the convention due to the general lack of interest.

A note of thanks was received from Betty Presnock, '47, for the kindness shown her during her recent hospital stay.

Thank you's were received from Rose Diseroad, Sarah Bergey (who is 91) for their Christmas remembrances.

A letter thanking the Alumnae for their generous contribution to the Dr. Prince Fund was received from Dr. Roy G. Holly, Professor and Chairman, Department of O.B. & Gyn.

MAY 5, 1970

16 members present.

Plans on the program for the October meeting are to be made by Miss Stauffer at the Philadelphia Electric Co., Modern Living Center, 211 South Broad Street.

Miss Heckenberger reported for Mrs. Schwartz that contact with Senior Class has been made. The members of the Class, with exception of three, have made application for Alumnae Association membership.

Miss Stauffer reported on the Luncheon of May 2, 1970. Out of the 376 reservations, 356 attended. There were 22 members of the Senior Class present as guests of the Alumnae. Many thanks to all who helped make Alumnae Day a success. Flowers from the head table were taken to Mrs. Barbour, '41, who is hospitalized.

On March 5, 1970, Miss Piersol sent out 2,657 letters. So far, 828 have been returned:



Relief Fund .....	\$ 563.00
General Fund .....	351.00
Melville Scholarship Fund .....	358.00
A. M. Lewis Scholarship Fund .....	2,859.00

Total .....\$4,131.00

Miss Bowman, Scholarship Committee Chairman, reports that three applications have been received for the Fall C. Melville Scholarship. These applicants are Lenora E. Schwartz, '66, Betty Lon Simonson Woods, '61, and Linda Reine Lake, '69. Since Mrs. Schwartz has more credits toward her degree than the other two applicants and has been active in the Association, the Committee unanimously recommends that she be granted the scholarship for the Fall semester. Motion was made and approved to accept Mrs. Schwartz for the Fall scholarship.

A note of thanks for the contribution made in memory of Vera Shontz, '30, was received from her sister, Hannah Steinhart.

A thank you was received from Elsie Skvir, '49, for the many cards received and visits made during her recent hospitalization.

Miss Piersol will look into the idea of a charm in the form of a Jefferson Cap to be sold to the Alumnae members. Miss Summers will be on her committee.

Miss Stauffer proposed the possibility of giving the older Alumnae members a pin instead of flowers on Alumnae Day. This will be discussed again at a later date.

Mrs. Massuda reported that she received a call from Mr. Steinberg, Pastor of Trinity Baptist Church in reference to Elsie Hauch, '25, a retired Jefferson Nurse who is crippled with arthritis and presently a patient in the Cobbs Creek Nursing Home. Her cousin, Wm. Hauch, inquired as to what we could do for her. His address is 101 Myrtle Ave., Havertown, Pa. (HI 9-2822). After much discussion, Miss Prevost recommended that we find out Miss Hauch's needs and follow through immediately with action. A motion was made and approved that the Board and President handle this matter.

Miss Prevost recommended a possible change of time for the Alumnae meetings, particularly during the winter months, to approximately 4:30 or 5:00 P.M. This is to be discussed by the group at a later date.

The 50-50 was won by Evelyn Dute.

A motion was made and approved that the President and her Board of Directors conduct any emergency business which may arise between May and September.

All the regular meetings of the Alumnae Association were held in the Recreation Room of the James R. Martin Student Nurses' Residence. Coffee and tea were served during the meetings.

FLORENCE ROCHE, *Recording Secretary*

## CLASS NEWS

1915—Carrie Cassel Coffman, 2705 Mountain View Drive, Box 14, LaVerne, Calif. 91750. My wife, former Carrie N. Cassel and now Carrie C. Coffman, is a permanent invalid in the infirmary of Brethren Hillcrest Homes. Light stroke and brain damage is the diagnosis. Our income will go to the Home for her care. Thank you for your interest. We wish you everything good.

Sincerely, A. R. Coffman.

Minerva Peters Bilger, 259 N. Union St., Middletown, Pa. 17057. My aunt, Minerva Peters Bilger, suffered a stroke on Feb. 29, 1968. She is presently a patient in the Geriatric Unit of the Polyclinic Hospital in Harrisburg. She has made great progress and is doing very well with her handicap. Has learned to write left handed and is now walking with the aid of a walker, which they said a year ago she would never be able to do. There is a further possibility that she will go ahead, very soon, to have cataracts removed, which her doctor says will be of value to her, since her sight is failing. So, going into her 90th year, she is remarkable and tries to do whatever she can to pass the time — has also learned to type and loves her colored T.V. I should add that we've been able to bring her home most weekends, except when the weather is bad; usually from Friday to Sunday.

She has asked me to send the dollar for the Bulletin. Dorothy A. M. Peters.

1917—Marion Elizabeth Smith Lauffer, 200 Eicher Ave., Greensburg, Pa. 15601. My daughter, Florence Lauffer Marsh and her husband are both college graduates. Florence is a teacher and her husband, Thomas Marsh, is successful in Photo Finishing Business.

1919—Hattie Williams Book, 7241 N. 20th St., Philadelphia, Pa. 19138. Great grandmother second time.

1921—Jennetta Wolf, 220 W. Woodland Ave., Springfield, Pa. 19064. I am now in the Harlee Manor Nursing Home, 463 W. Sproul Rd., Springfield, Pa., with cancer of the pelvic bones and hip joints plus Parkinson's disease.

1923—Mary Esther Bowser Benton, 202 N. Spring Garden Ave., DeLand, Fla. 32720. Retired — inactive.

1924—Mary Welker O'Connor, 124 Market Street, Sunbury, Pa. 17801. I am retired, am a widow, live with my sister in Sunbury, Pa. I have one daughter and three grandsons. My son-in-law teaches at West Chester Teachers College.

Mildred Felter Semler, 708 - 13th Street N., St. Petersburg, Fla. 33705. Recently presented a pin representing 28 years of service in St. Petersburg, Florida, Chapter of American Red Cross.

Blanche Shumayer McGuigan, 924 S. Conestoga St., Philadelphia, Pa. 19143. I have 8 beautiful grandchildren. My youngest graduated from St. Joseph's College in June. My husband, Bill, died at Lankenau Hospital May 1968 in cardiac arrest.

Kathryn Tash, 313 Clearbrook Ave., Lansdowne, Pa. 19050. Enjoying my retirement.

1925—Edith Bashore Odgen, 11829 Greenwood Ave., Trenton, N. J. 08609. Retired as of 1969.

Mary Catherine Greenlee Patterson, P.O. Box 1307, Albermarle, N. C. 28001. Son, Robert Jr., married Miami girl — have 2 beautiful sons — Edward Arthur



7, Robert Lee 5. Robert is a salesman with Colgate-Palmolive out of Raleigh. Edward Leonard married a Houston girl. They have a son, 22 months. Edward is a chemist with Shell Oil, Houston, Texas.

1926—Josephine Miles Dickerson, 540 E. Prospect Ave., State College, Pa. 16801. We have just returned to our State College Home from our two years in India.

1927—Pauline McElwee Gillen, 4581 Kings Highway, Brooklyn, N. Y. 11234. My biography is listed in the recent Sixth Volume — 1969 "Who's Who of American Women" (Jefferson Hospital mentioned, of course). Also received a First Award for oil painting in New Hope Phillips Mill Exhibit.

1928—Ethel Roth Groundwater, 3623 Vacation Lane, Arlington, Va. 22207. Supervisor Medical Office — Washington Post newspaper.

Laura Carleton Short, West & Oakwood Ave., Ocean View, Del. 19970. My grandson is President of the 10th grade in his school and has been made a member of the National Honor Society.

Edna Shearer Richards, R.D. #9, Box 596A, Tucson, Ariz. 85704. Am doing general duty at Tucson Medical Center, but plan on retiring by the end of 1970.

1929—Zelda Rowe Mencer, 910 S. 30th St., Camp Hill, Pa. 17011. Retired from Nursing 1946. Retired from business 1965.

1930—Ruth Frankenfielder Heisey, 245 E. Orange St., Elizabethtown, Pa. 17022. I am now Supervisor and "In-Service" Instructor! — at the Masonic Home Hospital.

1931—Blance Ford, 11017 Stevens Rd., Philadelphia, Pa. 19116. (Permanent Address). Retired from Friends Hospital after 34½ years as Director of Nurses. Now doing Private Duty Nursing — Sanibel Island, Florida.

Elizabeth Youngblood Gaul, 2148 Cherry St., Phila., Pa. 19103. Still working for ENT man. Twin granddaughters are in kindergarten — grandson in 3rd grade.

Evelyn Reeser Arnold, 1301 S. Scott St., Arlington, Va. 22204. Husband, W. M. Arnold, named President of a consultant firm of American Vocational Research.

Emma Bahner, 206 S. 13th St., Phila., Pa. 19107. Took a refresher course in Nursing at Methodist Hospital and am now doing full time night duty. It is a challenge — but most interesting and rewarding.

40th Anniversary coming up in 1971!

Dorothy Peterson, Betty Youngblood Gaul and Emma Bahner attended the 1970 Alumnae Luncheon and are to contact other class members of 1931 regarding their 40th Anniversary. PLAN TO BE IN PHILADELPHIA AND ATTEND THE ALUMNAE LUNCHEON MAY 1st, 1971!

1932—Mildred Bucher Price, 534 Mill St., Catawissa, Pa. 17820. Widowed Dec. 31, 1967. Doing Private Duty Nursing at Geisinger and Bloomsburg Hospitals. Both my children are married; two wonderful grandchildren and a baseball team of step grandchildren. So thankful to have my profession!

1933—Margaret Duncan Moscarella, New City, N. Y. 10956. Our son, Dr. A. A. Moscarella is now member of Thoracic Surgeons, has his boards in chest surgery.

Kathryn C. Rhule, 5913 Springfield Ave., Phila., Pa. 19143. Almira M. Kutz —nee Almira M. Rhule—deceased Jan. 22, 1970, Class 1921.

Vivian Passmore Murray, 3026 Old Freeport Rd., Natrona Hts., Pa. 15065.

Son, Billy, age 22, is at Beaufort, S. C. He joined the Marines and was in Vietnam for a year, returning to the States last March. Daughter, Nancy, almost 21, is a Senior at Indiana U. of Pa. She will graduate in Jan. 1971. Is majoring in Sociology — minor — Art.

1934—Mildred Myers Smith, 31 Stanford Place, Montclair, N. J. 07042. My husband was elected first lay Chairman of Montclair Chaplaincy Committee. I am going to Japan April 23rd for a 7 week tour of Homes for the Aged, Hospitals, Clinics, and Orphanages.

Mildred Dore Estrada, 1801 J. F. Kennedy Blvd., Philadelphia, Pa. 19103. My husband will be retiring at the end of this year and we will move to Ocean City, N. J.

Laura Klink Williams, 28 Cromwell Parkway, Summit, N. J. 07901. Head Nurse — Orthopedics — Overbrook Hospital, Summit, N. J.

Mildred Dunkle Bowman, Route #1, Box 250, Longwood, Fla. 32750. I will not be able to attend the luncheon this year. My husband is ill and feels that he can't stand the trip.

Betty Piersol, 1002 Spruce St., Phila., Pa. 19107. Received a RING for 35 years of service at the recognition dinner.

1935—Martha Willing King, 102 Park St., Gloversville, N. Y. 12078. Director Nursing Service, Nathan Littauer Hospital, since 1961.

Blanche T. Rushin, 55 A. Locust Ct. Apts., New Rochelle, N. Y. 10801. Promoted — Clinical Supervisor — Intensive and Coronary Care Units and program.

1937—Areta Matlack Rule, 383 Second St., Atlantic Beach, Fla. 32233. Son Christopher, elected to National Honor Society for year 1969-70, Fletcher Senior High, Neptune Beach, Fla.

Laura Zukowski Johnson, 121 Union St., Mt. Holly, N. J. 08060. Son serving at Tuy Hoa AFB Vietnam — Sgt. James H. Johnson, Jr.

1939—Isabel Martinelli Jackson, 2717 Guyton St., Easton, Pa. 18042. Our daughter, Marjorie, who attended Jefferson School of Nursing, was married on Sept. 6, 1969 to Mr. George Finlayson, from Dundee, Scotland. Our son, Leo, graduates from Johns Hopkins University, May 27, 1970.

Mildred Greenlee Durham, Greenbriar Farms, Marmora, N. J. 08223. Married last June to Dr. Robert B. Durham, a cardiologist in Atlantic City.

Johanna Katherine Laise Wagner, Star Route, Doylestown, Pa. 18901. Believe you know I have been practicing medicine for the past 20 years — M.D. from Temple.

Lorraine Pensinger Phillips, 101 Clark Court, Travis Air Force Base, Calif. 94535. Retired from the U.S. Air Force Nurse Corps, July 31st, 1969 at Travis AFB — rank of Colonel. 1964-1966 — Ass't Chief Nurse U.S.A.F. Hospital at Clark AFB, Phillipines. 1966-1969 — Ass't Chief Nurse at Travis AFB. I have enjoyed the Air Force, but happy to retire. My husband, Carl, retires in 1970 so we are looking forward to having our own home. The Bulletin is very informative and I enjoy renewing old friends. Many thanks!

1940—Arline Yost Conn, 1070 S. Coldsbrook Ave., Chambersburg, Pa. 17201. My daughter, Gretchen, will graduate from A.E. M.C. Hospital School of Nursing, Philadelphia, May 28, 1970.

Virginia McRae Avitable, 4136 Baychester Ave., New York, N. Y. 10466. John Avitable, Jr., graduated in 1969 from City College, Magna Cum Laude, and



Phi Beta Kapa. He is now working for his Doctorate in Physics at University of Maryland.

Helen Job Enterline, 8 Church St., Matawan, N. J. 07747. Newly married older son, Mark, Lehigh graduate 1969, and wife, Julie, are serving in VISTA in Wichita, Kansas. Junior son, Jamie, after 2 years at Wilkes College, Wilkes-Barre, Pa., is off to California to seek his fortune and to continue his education — presumably.

Norma Zeigler Smith, 1821 Glen Ridge Rd., Baltimore, Md. 21234. I'm a Sr. P.H.N. working in school for handicapped children. Son, Roger, at University of Alaska; daughter, Barbara, in graduate school S.W. at University of Md.; daughter, Judith, works for P.H. Association.

Doris M. Packer Engelbrecht, Apt. B-5 Kings' House West, 500 W. Rose-dale Ave., West Chester, Pa. 19380. Oldest son, William R., initiated into National Honor Historical Society recently. Junior—West Chester State College.

1941—Margaret Evans Koehler, 15 Old Park Lane Rd., New Milford, Conn. 06776. I am now the Director of Volunteer Services at the New Milford Hospital.

Margaret Elliott Wallett, 10746 Avenue H, Chicago, Ill. 60617. Daughter, Elizabeth, graduates from Nursing School, June 1970. Me — now doing Supv. work — 10 years too late.

Harriet H. Werley, 1447 Hollywood Ave., Grosse Point Woods, Michigan 48236. Completed Ph.D (Psychology) at Un. of Utah; took new position at Wayne State University — am Director, Center for Nursing Research.

Geraldine Chamberlain Topping, 1422 Bloomingrove Rd., Williamsport, Pa. 17701. Three of my four children are married. Have a wonderful time with my five grandchildren.

Frances Louise Huston Rumberger, 2111 Yale Ave., Camp Hill, Pa. 17011. Enjoying third grandchild, a daughter, born on Jan. 21, 1970 to daughter F. Suzanne Rumberger Carter — class of 1962.

1942—Rhoda Burg Weisz, 3 Delaware Rim Drive, Yardley, Pa. 19067. At the time of the Luncheon, Paul and I will be in Italy as guests of the Italian Petroleum Corporation. Greetings to my class mates!

Gladys Reed White, 301 S. 6th St., North Wales, Pa. 19454. Borough of North Wales Health Officer.

Alice C. Boehret, 1230 Amsterdam Ave., N. Y., N. Y., 10027. I am dissertation away from an Ed D and I work 2 days a week as consultant in ADN dept. NLN.

Mary Jane Lardin Braid, McLean, Ill. 61754. I am back at work 3 nights a week on the Surgical Floor; my good Jefferson training "Came back" amazingly well.

Elizabeth Simpkins Mayhew, 7 N. 12th St., Millville, N. J. 08332. Our son, Charles F., graduates from Albright College, Reading, Pa., in May 1970 with AB degree.

Beatrice Raymann Snyder, Olivebridge, N. Y. 12361. Excerpts from "The Daily Freeman", Kingston newspaper which Mrs. Snyder sent in.

"John R. Snyder, a Junior at State Un. College of Forestry, Syracuse Un., will be participating in a foreign study program in Central America during the spring semester. He, along with 39 other students majoring in landscape architecture, and the 2 faculty members who will accompany them, will be associated

with San Carlos Un. and will be housed at a branch of the Un. in Attigua." "Marie Snyder, age 17, a Junior at Oteora High School, is an American Field Service Exchange Student, living in Valdese Colonia, Uruguay, S.A., as a member of the Alberto Schussein family. She will attend the local school and participate in community activities for a year." "Robert Snyder, recently featured on Teen Page for his achievements at West Point, is a consistent dean's list student at the U.S. Military Academy."

Sally McHugh Luscombe, 600 Old Gulph Rd., Penn Valley, Pa. 19072. Husband, Dr. Herbert A. — President-Elect Alumni Association of Jefferson Medical College. Son, Dr. Herbert J. Luscombe, Class of 1968, now Resident Orthopedics at Thomas Jefferson Un. Hosp. Daughter, Susan, candidate for Ph.D. in Microbiology, Thomas Jefferson Un.

1943—Ann Louise Trostle Miller, 750 East Pike, Indiana, Pa. 15701. I am doing Psychiatric Nursing at Torrance State Hospital.

1945—Roberta Faith Morgan Vogel, Oakura, Pluckemin, N. J. 17978. Two daughters: Carol age 7 and Kristin age 5. Husband: Carl H. — Chemical Engineer. Myself: B.S. degree — Graduate Study. Past teaching — Public School. Present — Volunteer teaching and educational interests.

Frances Knife Gracey, 2107 Park Ave., Parkersburg, W. Va. 26101. Presently Director of Nursing at Camden Clark Memorial Hospital; 2nd Vice President of West Virginia League for Nursing.

Marjorie J. Wilson, 16 S. Van Dorn St., Alexandria, Va. 22304. I was promoted to the grade of Colonel in the Army Nurse Corps on Feb. 11, 1970. Am currently assigned in the Army Nurse Corps Career Planning and Assignment Branch, Office of the Surgeon General, Washington, D. C.

Helge Zundt Michael, 211 W. Seminary Ave., Lutherville, Md. 21093. Have left nursing for a while and am now a real estate salesman. The hours are more flexible and I have more time to spend with the children.

Patricia Crawford, 2213 Allen St., Allentown, Pa. 18104. Am a Major in USAF Nurse Corps; presently stationed in Bermuda (Kindly AFB) reporting to Hamilton AFB California in July 1970.

Betty Moyer Greenwood, 6704 Berkshire Dr., Camp Springs, Md. 20031. Husband — overseas — he's the Dental Surgeon at Eilson AFB, Alaska. Family in Washington awaiting his return.

#### 25th ANNIVERSARY FOLLOW-UP DATA—

Attendance of Spring 1945 Class:—Annual Luncheon—May 2, 1970. Mrs. Martha Jane Baird Tomassetti, Mrs. Lenore Brady Strigari, Mrs. Betty Jane Deitzler Heuston, Mrs. M. Louise Kelly Carver, Mrs. Carolyn Miller Longsderff, Mrs. Helen Moore Raphelson, Mrs. Betty Riggan Laggner, and Mrs. Evelyn Sherick Sell.

Cash contribution to Adele Lewis Student Scholarship Fund: \$37.00.

#### Class Notes — 25th Anniversary:

Mrs. Martha Jane Baird Tomassetti—Husband: Bernard Tomassetti, M.D., Internist, Chief of Medicine at St. Joseph's Hospital, Philadelphia; also, President of St. Joseph's Hospital Medical Staff. Number of Children: 11—Ruthanne, 24 yrs., graduate of Cabrini College and attending Villanova University (candidate for Masters Degree in Library Science); Kathleen, 23 yrs., Aug. 1970 graduate of St. Joseph's School of Nursing; Martha Jane, 22 yrs. (married); Nancy, 21 yrs. (married); Bernard, Jr., 20 yrs., in the Armed Forces; Edward,



19 yrs., student at Penn State University; Yvonne, 13 yrs., Anita, 12 yrs., Donna Maria, 11 yrs., John, 9 yrs., and Richard, 6 yrs. One (1) granddaughter.

Mrs. Ruth Barr Siciliano—Husband: Richard Siciliano, Presbyterian minister, Director of Presbyterian Metropolitan Mission, Texas. Ruth has been active as a school nurse/teacher. Number of children: 1 — Richard, Jr., 16 yrs., managing editor of high school paper.

Mrs. Lenore Brady Strigari—Husband: S. J. Strigari, School teacher, Philadelphia Board of Education. Lenore is presently employed as the Executive Secretary of the American Society of Cytology. Number of children: 3 — Ann Marie, 18 yrs., freshman at Temple University of Philadelphia, majoring in foreign languages; Vicki, 17 yrs., June graduate of The Philadelphia High School for Girls and will begin her pre-medical studies at the University of Pennsylvania in September 1970; Donna, 15 yrs., sophomore, The Philadelphia High School for Girls.

Mrs. Regina Chudzinski White—Husband: Craig White. Regina is a private duty nurse at Abington Memorial Hospital. Number of children: 5 — Four boys, 17, 15, 13, and 10 yrs; one girl, 6 yrs. All the boys play instruments in the school band and are active in baseball. Regina's oldest son will be a freshman at Indiana University of Pennsylvania in September 1970 and will major in chemistry.

Mrs. Jacqueline Dickinson Moore—Husband: Howard G. Moore, Civil engineer and consultant to Greene County Planning and Zoning Commission (Springfield, Missouri). Number of children: 2 — Laurie, 8 yrs., and Douglas, 5 yrs.

Mrs. M. Louise Kelly Carver—Husband: C. E. Carver, retired, U.S. Army Air Force. Louise is employed by a Jacksonville Insurance agency, processing department for medical-surgical claims. Number of children: 1 daughter and 1 granddaughter.

Mrs. Frances Knipe Gracey—Husband: William Gracey, Attorney-at-law. Number of children: 2 — Susan, 16 yrs., and Karen, 14 yrs.; both girls are interested in music — voice, flute, piano, and organ. Frances is Director of Nursing at Camden Clark Memorial Hospital, Parkersburg, West Virginia.

Lieutenant Colonel Alta Kressler is an instructor at the Valley Forge General Hospital, Phoenixville, Pennsylvania. Alta has served as an Officer in the Armed Forces for the past nineteen years.

Mrs. Carolyn Miller Longsderff—Husband: Donald Longsderff, high school mathematics teacher. Number of children: 4 — Carolyn Lea, 22 yrs., received her Bachelor of Science degree in Nursing; Craig, 17 yrs., high school senior, Donnie, 14 yrs., and Annie, 10 yrs. Carolyn is employed as an industrial nurse at Quaker Oats, near Harrisburg.

Mrs. Helen Moore Raphelson—Husband: Morton Raphelson, electrical engineer. Number of children: 4 — Nancy, 20 yrs., attending University of Maine; Mark, 19 yrs., attending University of West Virginia; Jean, 15 yrs.; and Bruce, 6 yrs.

Mrs. Betty Jane Riggin Laggner—Husband: Harold J. Laggner, M.D., Family physician. Number of children: 3 — Rosanne, 21 yrs., will graduate from the University of Delaware in June, 1970 with a major in biology; Brooke, 17 yrs., will graduate from La Salle Military Academy, Oakdale, New York, in June 1970; and Dave, 12 yrs. Betty Jane served as President of the Women's Auxiliary to the Medical Society of the State of Delaware during 1969.

Mrs. Evelyn Sherick Sell—Husband: William Sell, Chief engineer of the U.S.N.S. Greenville Victory (presently on a trip to Viet Nam). Number of children: 3 — Suzanne, 20 yrs., attended one year of college and married — has a nine month old daughter, Debbra; Jeanne, 18 yrs., freshman student at Drexel University, and Joyce Ann, 5 yrs.

Colonel Marjorie J. Wilson is presently assigned to the office of The Surgeon General in Career Planning for Army Nurse Corps Officers. Marjorie has served in the Army Nurse Corps for the past nineteen years.

Betty Jane Deitzler Heuston has been a public school nurse for the past ten years in the Palmyra, Pennsylvania area schools. Number of children: 2 — daughter, age 20, junior student at the University of Virginia, and a daughter, age 18, who is a freshman student at Ursinus College.

1946—Jeanne Supplee, 200 S. Market St., Shamokin, Pa. 17872. LTC in the Army Nurse Corps. I am on active duty stationed at Elizabethtown College, studying for my B.S. degree.

1947—Anne Daphine Miller Sphon, Willowbrook Apts. C-10, Greensburg, Pa. 15601. Married to Frank E. Sphon on November 28, 1969.

Betty E. Steward McConnell, Holiday Inn, Box 3366, Charleston, S. C. 29402. My husband, David, and I are living at the Holiday Inn, Hwy. 17 South, in Charleston, S. C., where my husband is Innkeeper. Our welcome mat is out to any passing thru. Would especially enjoy visiting with members of my class of September '47.

Dorothy Mertz Sturr, 9041 Charloma Drive, Downey, Calif. 90240. Husband, Dr. Robert Sturr, Director of X-ray in a new hospital in Downey. Daughter, Judy, begins dental school, USC, in the fall.

Janet Edwards Maurer, 7752 Carrleigh Parkway, Springfield, Va. 22152. Returned from Okinawa in August 1969. Husband working at the Pentagon, has been promoted to full Colonel.

"Sandy" Maude Sanders Schwab, 1401 S. Flagler Drive, West Palm Beach, Fla. 33401. Sure enjoyed seeing y'all last June when Steve was a patient on the 8th Annex. Back in line — but he went through the windshield of car in January — 18 inches of stitches across forehead and bridge of nose.

"Sandy" Schwab submitted the following article from the Palm Beach Post-Times, April 4, 1970. "John F. Wymer Jr., administrator of Good Samaritan Hospital, has announced the appointment of Mrs. Noreen Poole as inservice education director of the hospital.

She has served as assistant director of the program since January.

Mrs. Poole received a BSN degree from Wayne State University, Detroit, Mich., and was graduated from the Jefferson Medical College Hospital School of Nursing in Philadelphia, Pa.

Prior to coming to Florida, Mrs. Poole served at Henry Ford Hospital, Detroit and at Jefferson and Frankford Hospitals, both in Philadelphia."

1948—Margaret Bartner, Becker, #2, Coatesville, Pa. 19320. Husband, Dale, receiving his Ed.D. from Un. of Pennsylvania, this May.

Sara Elizabeth Newkirk Boswell, 6535 Yost St., N.W., Canton, Ohio 44718. Return to nursing after 15 years. I am teaching prenatal classes (Prenatal care, infant care and nutrition) to pregnant school girls through the Massillon City School Systems — part time.



Mildred Franks Hines, 491 Whittier Ave., Glen Ellyn, Ill. 60137. I still do part time work at Rancocas Valley Hospital — besides taking care of my family. Rob is now 17 years old and in 11th grade at J.F.K. High School. Debbie is 15 years old and in 9th grade at Alewitt Jr. High in Willingboro, N. J. My husband, Floyd, is now Sales Manager of Private ----- for Waters Conley Corp. of Chicago. We moved to Glen Ellyn May 30th.

Ella Priscilla Kresge Nicholson, 602 N. 25th St., Corsicana, Texas 75110. Son, Charles, was Valedictorian of his H.S. class last June and will win several academic awards at Navarro Jr. College this spring. He plans to attend Rice Un. this fall.

Rose M. Kershbaumer, 8400 Pine Rd., Philadelphia, 19111 (permanent address) 4334 Larchwood Ave., Phila., Pa. 19103 (temporary address). Currently a candidate for Masters' degree at Un. of Pa. Class of '71.

1949—Louise Dietz Strayer, 362 S. Charles St., Dallastown, Pa. 17313. Family was honored in September by being invited to the WHITE HOUSE for church services and a reception in the STATE DINING ROOM. Had a lovely chat with Julie Eisenhower. Was a memorable day!

Hazel Sheekler Kogler, 802 Rugby Rd., Phillipsburg, N. J. 08865. Will finish my B.S. in School Nursing and Health Education this coming fall. It took four years, but it's worth it.

1950—Mary Louise Osborne Foy, 249 Aikahi Loop, Kailua, Hawaii, 96734. We now have our own sheet metal and air conditioning business located in Honolulu. Official name is Foy-Sowell, Inc.

Miriam Schorn Bower, 121 Hickory Hill Rd., Kensington, Conn. 06037. Russell (husband) became a member in Nov. 1969 of the National Board of Neurological Surgeons. We moved to Kensington in July 1969. Eldest son at prep school (The Gunnery).

Barbara Fisher Ackerman, Apple Brook Farm, Linfield, Pa. 19468. I will graduate from West Chester State College, May 24, 1970, with a degree in Nursing Education.

Twila Andersen Sanborn, 8111 Greenwood Ave., Tampa, Fla. 33604. I am now Head Nurse of the New University Community Hospital here in Tampa — 3 to 11 shift.

Sara Young Konstanzer, 132 Delview Drive, Wilmington, Del. 19803. Widowed since July 8, 1966. Have four wonderful children.

Audrey Koch Wolfberg, 98 N. Broad St., Selinsgrove, Pa. 17870. My husband is serving as President of the American Optometric Association.

Helen Louise Sheriff Rightor, 210 Beechwood Dr., Oil City, Pa. 16301. Great year for skiing — but broke my leg on a tiny patch of ice in the grocery store parking lot! What a blow! Moved into our beautiful new home. Five little ones are still a handful. My husband is a G.P. and very busy.

1951—Nancy Thompson, 220 Dennison St., Little Rock, Ark. 72205. Assumed charge of Medical Intensive Care and Coronary Care Unit — Little Rock VA Hospital, November 1, 1970.

1952—Ann Summers Nesbella, 533 Stewart St., Bellwood, Pa. 16617. I am now employed as House Supervisor 11 to 7 shift — Altoona Hospital, Altoona, Pa.

Nancy Lee Greising Wilhelm, 258 MacDill Court, San Antonio, Texas 78236. George A., husband, a SmSgt. in USAF. Received the Second Oak Leaf Cluster

to the AF Outstanding Unit Award while assigned to the 370th Security Police Squadron at Lockland AFB. He has been reassigned as Ass't. Course Chief of Security Police Combat Preparedness Course at that base.

1953—Trudy Lange Amend, 320 Moreland Rd., Huntingdon Valley, Pa. 19006. Daughter, Carol, age 10, second of 4 children, made stage debut in "Mame" in March at Abbey Stage Door in Phila. Carol is often seen on local T.V. shows and hopes to be a model and ballerina some day. Oldest daughter, Debbie, is hoping to be a doctor — is a candy striper now. Husband has new architectural office in Rockledge, Pa., handling all phases of architectural work. I am working in coronary care unit of Jeanes Hospital in Fox Chase.

1954—Doris Henry Schramm, 1655 Jupiter Rd., Venice, Fla. 33595. Married Jack Schramm May 17, 1969.

1955—Audrey Titlow Priga, 1532 Fairview St., Reading, Pa. 19606. Baby girl born Nov. 1969.

Dawn Deitman John, 3830 Maule Rd., Pensacola, Fla. 32503. Son born January 26, 1970.

1956—Shirley Orndorff Doernte, R.D. #1, Box 56, Ruffsedale, Pa. 15679. Husband, Harry, promoted to Freight Agent at McKeesport, on the B & O RR.

1957—Rose Marie Yuhus Dudas, 281 Polifly Rd., Hackensack, N. J. 07601. Daughter born last June 1st, 1969 — Debra Ann. Husband — lawyer for Bergen County Legal Services — Hackensack, N. J.

Anne Kepping Snyder, 121 Clayton Rd., Hatboro, Pa. 19040. My husband, Harry D. Snyder, M.D. (Jefferson 1958) has just resigned from the USN after 12 years and is opening an office to practice Ophthalmology in Willow Grove, Pa.

Carol Hyland Gray, 6601 Pleasants Drive, Charlotte, N. C. 28211. For the last year my husband has practiced law with the firm of Carpenter, Golding, Crews and Meekins here in Charlotte. Our 12 year old son and 8 year old daughter are looking forward to my pending "retirement" from nursing, after 6 years of being Head Nurse in Urology at Presbyterian Hospital. I love nursing and have come to love Presbyterian almost as much as our beloved Jefferson. How often I think of Miss Josephine Messa's words: "Remember, young ladies, wherever you go — you are Jefferson". It is interesting to hope that some of Jefferson is stamped indelibly on Presbyterian. Certainly, much of Presbyterian and Jefferson are indelibly stamped on me!

Margaret L. Milotich Martin, 510 E. Leamy Ave., Springfield, Pa. 19064. No time left for boredom with 5 active youngsters. Husband, Jack, doing graduate studies at P. M. College and employed as Personnel Manager at Sun Shipbuilding and Drydock Co., Chester, Pa.

Audrey Taylor Meunier, 300 Elaine Ave., Taylors, S. C. 29687. Husband, Paul (Class of '63 at Jeff) completing Orthopedic Residency at Shriners Hospital, Greenville, S. C. Children number four now. Twins, Anne and Andrew, arrived July 30, 1969; also Peter age 3, and Paul, Jr., age 6. Keeping up with Pediatrics at home!

1958—Marie Sarappa Keenan, 8 Clement Drive, Woodbury, N. J. 08096. Husband, Gerald R. Keenan, M.D. (Jefferson Alumnus) became Board Certified Radiologist recently. Practicing at Underwood-Memorial Hospital, Woodbury, N. J. We have three children.

Elizabeth Dailey Husain, 4421 Granada Blvd., Suite 123, Warrensville Heights, Ohio 44128. Husband practicing medicine in Cleveland.



Lois M. Boeckel Toomey, R.D. #1, Box 192, York Haven, Pa. 17370. A son, named Kevin Andrew, was born on Nov. 28, 1969. My husband is a partner and Vice-President of Conewago Machine Products, Inc., a machine shop at this address.

Doris Gademan Stephens, One Blount Circle, Barrington, R. I. 02806. Husband now in practice in Providence, R. I. Last year we spent three months in St. Lucia, W. I. Karl ran an eye clinic, and I taught Pediatric Nursing at St. Jude Hospital, Vieux Fort, St. Lucia.

Sylvia Tanner House, R.D. 31, Muncy, Pa. 17756. I am working part time as General Staff Nurse at Divine Providence Hospital, Williamsport, Pa. I have a Brownie Troop now.

Barbare Beard Garzon, 901 Haines Rd., York, Pa. 17402. My husband has taken new position as Manager of Plastics Dept., of Berg Electronics, New Cumberland, Pa.

Joan Ravicini Randles, 61 Evergreen Drive, Willingboro, N. J. 08046. Since we have 6 children, I have been inactive although I have kept by N. J. and Pa. licenses current. I just began working 3 or 4 nights per month at our local hospital (Rancocas Valley) to reacquaint myself with nursing (psychiatry is my special interest). My husband is a registered professional engineer in N. J. and Penna.

Mabel Rennebaum Hollender, 7204 Huron Ave., Lexington, Mi. 48450. My husband, David, accepted a call to St. Matthew Lutheran Church, Lexington, Mi. 7-69. Lexington is a lovely resort town on Lake Huron and in the center of fruit orchards. Baby girl, Miriam Carol, born Feb. 19, 1970, weight 8 lb. 8 oz. Our twins, Paula and Priscilla, age 3½ years, think she is adorable and so do we.

1959—Betty Ann Hughes Kosko, 32 Lewallen Drive, Newport News, Va. 23602. Since we are a military family, we have done extensive traveling in our 9 years of marriage. Spent 3 years in Germany, 3 years in Okla. plus visited Hawaii. Husband is a helicopter pilot (U.S. Army) and has 4 years until retirement. We have 2 children: Wayne — 6 years and 4 years. Present doing some part time nursing at Riverside Hospital.

Judith Wright Bloes, Woodland Acres, Old Mill Rd., Jermyn, Pa. 18433. Working part time for husband, a busy G.P., as Office Nurse — doing EKGs — love it and good to be back in a white uniform. One son in 4th grade and one daughter in 2nd grade, also one daughter in Kindergarten. It was good seeing everyone at our 10th Anniversary last year.

Betty Rockefeller Laird, R.D. #1, Route 33, Freehold, N. J. 07728. Last May 16th, 1969, our 4th daughter was born — Ann Elizabeth. Our other children are: Pamela — 8 years, Susan — 6½ years, Diana — 5 years. I've been active in a hospital auxiliary for the past 6 years which as of now does not have a working hospital. This has been a great challenge in our area. There are 6 auxiliaries in the Greater Freehold Area working to raise their pledge of \$150,000.00, of which part \$100,000.00 was pledged in the 1st campaign and an additional \$50,000.00 was just pledged in the 2nd campaign which has just gotten under way.

Arlene Bachers Bawmann, 522 Charmont Ave., Folcroft, Pa. 19032. Husband, Donald, works for Emergency Care Research Institute. We have four children, last one born Jan. 7, 1969 — Boy — David.

M. Patricia Sankey Brown, 2020 Brandywine St., Philadelphia, Pa. 19130. My husband, Mark, received his Ph.D in Experimental Pathology this past

June from Jeff and was appointed as Instructor in Orthopedic Surgery at Jeff. I will begin new position as Supervisor of O.R. at Graduate Hospital on April 20th of this year.

Ann Major Jones, 163 Ruland Rd., Selden, N. Y. 11784. Third child — Thomas Edward — 10 lb., 13 oz., March 16, 1970.

1960—Madeline Henly Glass, R.D. #1, Box 200A, Pine Bush, N. Y. 12566. I am presently enrolled as a part time student at Russell Sage College, Troy, N. Y., hoping to receive a B.S. degree in Health Education, "eventually".

Jean Dutton Strong, 136 W. Water St., Painted Post, N. Y. 14870. My husband and I are Missionaries in Philippine Islands. We are houseparents in a boarding school for missionary children. We will be returning in June 1970 to Philippine Islands. We have three children: Stephen 7½ yrs., Ruth 5½ yrs., David 2½ yrs.

Judith Romack, 617 S. 48th St., Philadelphia, Pa. 19143. Well it's back to Washington, D. C., Maryland area for me. I will start to work at Georgetown University Hospital Sept. 1, 1970. I will always have fondest memories of Jefferson and the friends I made here!!!!

Dorothy Cale Van Derripe, 24101 Archwood St., Canoga Park, Calif. 91304. Daughter, Linda Annette, Born April 8, 1969. Would love to hear from classmates in the Los Angeles area.

Judith Haas Stauffer, 3729 Mayer Lane, Hatboro, Pa. 19040. I am presently employed at the Phila. State Hosp. (Byberry) as Evening Supv. of the West Unit. Have 2 little boys — Todd age 4 — Tim — age 1.

Carolyn Ressler Goepfert, 139 Westfield Rd., Holyoke, Mass. 01040. I was appointed Assistant Head Nurse on the OBS-Gyne Floor, where I work. Our daughter is 14 months old and a joy!

May Evonne Farris Taylor, 5 Hanley Rd., Liverpool, N. Y. 13088. Husband — regional manager — Ocean Spray Co.

1961—Loretta Davis Cunninghame, 914 Third Place, Plainfield, N. J. 07060. Progress! Susanne Williams Jacobson, 229 Hendrickson Ave., Edgewater Park, N. J. 08010. We have a daughter born May 4, 1969 — Kristine Ann.

Arlethia Lewis Wright, 10635 S. Lowe Ave., Chicago, Ill. 60628. My husband, Benj. C., is Supervisor of Personnel for Western Region, Penn Central R.R. Co., covering over 5 states, a psychologist in industry! I have my B.S. degree from Un. of Penna., am taking courses toward Master's at Northwestern and am part time Administrative Supervisor. Have three children who model and have appeared in issues of "Look" magazine, "McCalls", "Sears", and "Marshall Fields" advertisements in fashions.

Beatrice Ruth Rhoda, 106th General Hospital, APO San Francisco, 96503. Am awaiting orders at present for possible return to states by July. Will send new address.

Patricia Anne Michaels Calhoun, 1026 Corn Crib Drive, Huntingdon Valley, Pa. 19006. Husband, Richard Joseph, Vice President, Binswanger Corp., Industrial Relations. New baby last year, Christophen Michael, 2/11/69. Other child, Richard Joseph, Jr., 4 years old. Both children born at Jeff.

1962—Janet Powell Wolf, 309 E. Southey Ave., Altoona, Pa. 16602. Baby Boy — born Nov. 11, 1969.



Carolee Swalm Mitchell, Rt. #1, Box 193, I-7, Germantown, Md. 20767. Husband promoted to HM1 — U.S.N.

Phyllis Sutthill Johnson, 13 Smith Ave., Lexington, Mass. 02173. My husband is now working with A. O. Little as a Chemical Engineering Consultant. Our third son, Neil, was born at Christmas.

Janice Ann Panick Billick, 39 Rose Loop, Ft. Leavenworth, Kansas 66027. Husband, Bernard, gets out of Army Jan. 1971. We plan to return to East Coast to practice law.

Susanne Vache Blackburn, Skytop 24 - 20, Parlin, N. J. 08859. We are now living in North Jersey as my husband, Bob, who is a U.S. Postal Inspector, was transferred to N.Y.C. in April 1969. We have a year old son, Keith, who is our pride and joy.

Carole Rees Slonaker, 29 Kevin Drive, York, Pa. 17404. Son — Gregory Scott — Born January 8, 1969.

Nancy Ann Smith Hamme, 232 Woodgate Rd., Tonawanda, N. Y. 14150. My husband is back in school working on his Masters in Business Administration. We have 3 children, Debra — age 4, Karen — age 3, and David Richard — born Oct. 21, 1969.

Theresa A. Lefchick Lamberth, Husband, LCDR B. C. Lamberth, HC-7 Det. Cubi Point, U.S. N.A. APO San Francisco 96654. My husband and I are presently residing in the Philippines, in a small town called Alongapo. This life is sure an experience and an adventure down here. My husband has been promoted to Commander and is enjoying his very busy job. This is the first time that I have not been employed and I sure do miss it — never thought I would say it but it is true. Am very happy the Alumnae Bulletin has such excellent coverage of Jefferson progress and look forward to the next issue.

Susan Eckerd Leake, 1239 Harrow St., Charleston, S. C. 29407. My husband, Milt, is executive officer of USS Lafayette SSAN-616 Gold crew. We've been in Charleston since October and are enjoying living in another part of the U.S.

Frances Suzanne Rumberger Carter, 248 N. 21st St., Camp Hill, Pa. 17011. New Baby girl — Lisa Anne — Jan. 21, 1970. Husband in Vietnam in USMC — received the Air Medal Jan. 1970.

Jessie Reck Keith, 2034 Cornell Rd., Cleveland, Ohio 44106. I am presently finishing my 2nd and last year of nurse anesthesia at the Cleveland Clinic Hospital. Graduation is Dec. 31st, and I am enjoying it immensely.

Joyce Ann McHugh Kormanis, 14113 Ellen Drive, Livonia, Mich. 48154. New addition to family — Todd Dennis — Born Jan. 16, 1970. (weighing 9 lbs., 8 oz.) Husband, George, promoted to Senior Design Engineer — Ford Motor Co., light truck — brake division.

Sue Lehman Rice, 5503 Bryn Mawr, Dallas, Texas 75209. 2 daughters — Sabrina born Feb. 1968 — Sarah — born Oct. 1969.

Marian Louise Krahling Hammond, 1415 Barrett Rd., Baltimore, Md. 21207. 3 Children, Phillip Jr. — age 6, Leslie — age 4, Christine — age 3. Husband, Phillip, promoted to Assistant Mgr. of International Harvester Construction & Industrial Equip. Store in Baltimore.

1963—Katherine Marie Kingsley Kinsey, Apt. F 206, York Hills Apts., York, Pa. 17403. June 1, 1968 married M. Dean Kinsey, M.D., alumnus Jefferson Medical College, Class of 1969. He has completed internship at York Hospital, York, Pa.;

will stay for 2 years Internal Medicine Residency; third year at University Center. Plan to attend Millersville State College June 1969 — goal — degree in Public School Nursing.

Loretta Rich Kurland, 10 Dogwood Lane, Turnersville, New Jersey 08012. My husband, Bob, and I are the proud parents of two sons, Bobby 3½ and David 2½.

Maureen Maguire, 322 Windsor Ave., Haddonfield, N. J. 08033. Last year I was invited to join Sigma Theta Tau, the National Nursing Honor Society. I am presently a Graduate Student at the University of Pennsylvania.

Ann Camilli Musitano, 12736 Soule St., Poway, Cal. 9264. I have been Head Nurse of the Hemodialysis Unit at Scripps Clinic and Research Foundation, La Jolla, Cal.

Dorothy Fanelle Brown, 9 Sunset Lane, Ft. Madison, Iowa 52627. My husband, Doug, was made Project Engineer at the DuPont Plant in Fort Madison, Iowa, in June 1969. We have two children, Kim 3 years and Kevin 1 year.

Theresa Robson Cooke, 3525 Bartram Rd., Willow Grove, Pa. 19090. Daughter, Eileen, Born Nov. 28, 1969. Mary Therese is now 3 years old.

Shirley Marat Weller, 937 Victory Blvd., Staten Island, N. Y. 10301. As of July 1970, my husband, Michael, (Jeff '63) completes his military duty. He has accepted a position as Assistant Professor of Pediatric Radiology at the Johns Hopkins Hospital for the coming year — so we are off to Baltimore.

Mary Anne Dutt Vernallis, 13541 Calais Drive, Del Mar, Calif. 92014. My husband, Sam, an F-4 Phantom pilot for the U.S. Navy, has just been promoted to Lt. Commander. I have been Head Nurse of the ICU-CCU at Scripps Clinic and Research Foundation since Oct. 1969.

1964—Linda Wang Pincus, 19 Northland Lane, Matawan, N. J. 07747. My husband, Marty, is Director of Sales at McGraw-Hill. I will soon be teaching Lamaze Method of Prepared Childbirth. Our son, Allan, was 2 years in April. We are expecting our second child in November — and very excited about it.

Jane Cox Gay, 1910 Spring Garden St., Philadelphia, Pa. 19130. I am specializing in pediatrics at home now. Our twin girls are 18 months old and we are expecting another child in October.

Carol Bailey Miller, Box 85, Columbia Cross Rds., Penna. 16914. Last summer I completed a course at Mansfield College of Psychology. I am still working at the Robert Packer Psyc. Unit. We have a new addition — Kara Lyn — born Sept. 22, 1969 — 4 lbs. 6 oz.

Virginia Magee Best, 36 Koger Rd., Trumbull, Conn. 06611. Daughter, Megan, 3 years old. Working three evenings a week in Pediatrics.

Kathleen Langan Jones, 20538 Wood Ave., Torrance, Calif. 90503. We're planning a vacation back East in April — so anxious to see the changes at Jefferson! Kim is now 3½ years old; Heather is 1½ years. Ward finishes his residency in August 1970!

Barbara Nase Anderson, 1139 Tilghman, Allentown, Pa. 18102. Bob is presently serving his second tour in Viet Nam; he returns in Dec. I am spending the year completing work on my Masters Degree in Medical Surgical Nursing at the University of Maryland.



Phyllis Sbrolla DeJesse, 3202 Wells Drive, Parlin, N. J. 08859. Husband, Paul, works in N. Y. City as an account executive with Frohlich Advertising Agency. I am kept busy as a full time mother taking care of 2½ year old Paul Jr. We are looking forward to the birth of our second child in October.

Fay Shaffer Butzbach, 2603 Abington Rd., Wilmington, Del. 19803. I am presently working part time but still running the Dialysis Unit at St. Francis Hospital. My husband, Bob, a DuPont Engineer, promoted to Captain in the U.S. Army Reserve.

Marilyn Miller Long, 163 Cheyenne Trail, Medford Lakes, N. J. 08055. We have two daughters — Amy Michelle 1½ years and Susan Marie — born January 13, 1970.

Jeraldine Marasco Kohut, 608 Allenway, State College, Pa. 16801. Married June 21, 1969; husband Ph.D. candidate Penn State Univ., University Park, Pa. Current employment at the Penn State University Hospital and I am a part time student at the University.

Carol Parzniewski Teplick, 25 Mt. Hood Rd., Boston, Mass. 02146. I will graduate from Boston University in May 1970, with my B.S. in Nursing; planning to attend Graduate School.

Penelope Jones McAlees, 4502 S. 31st St., #201, Arlington, Va. 22206. I resigned my Head Nurse position at George Washington Un. Hospital in Dec. 1969. I am not working at present. My husband, David, a Lt. USN is resigning his commission and in Sept. will begin graduate studies in Nuclear Engineering at the Un. of Wisconsin.

Barbara Lenker Tredick, 8603 Cottage St., Vienna, Va. 22180. Received B.S. in Nursing 1966; recently returned from Honolulu, Hawaii, after living there for 2 years, to Virginia. My husband received a promotion to Lieutenant Commander, U.S. Navy. First born, Willia, III on Feb. 28, 1969, in Hawaii.

Lynn McMaster Nagatani, P.O. Box 811, Delano, Calif. 93215. Currently unemployed. Kelly Elyse, our second daughter, arrived April 3rd, much to the delight of Mother and Daddy and Sister Seana.

Patricia Insley Orr, 447 Walnut Ave., Trevoise, Pa. 19047. I retired from working to await the birth of our second child in August.

1965—Adrienne Lowe Doughenbaugh, 11 Forest Drive, Northfield, N. J. 08225. I am still working full time in Post Anesthesia Room at Shore Memorial Hospital, Somers Point, N. J.

Barbara Davis Schraeder, 5523 Gettle Ave., Madison, Wisc. 53705. We are now living in Madison, Wisc. My husband, Paul, is a Resident in Neurology. We have a daughter, Maria, born July 23, 1968. I am temporarily retired from nursing but plan to return to college this fall.

Dorothy Kessler Rosencrance, 44 Holly Drive, Hatboro, Pa. 19040. We have moved into our own home and have a little girl born Dec. 8, 1969.

Barbara Jean Ott Keller, 1000 Walnut St., Philadelphia, Pa. 19107. Our second child is due in late May. My husband completes his Neurological Residency at Jefferson on July 1st, 1970. In October we will be moving to San Antonio, Texas, for 2 years in the Air Force.

Dianna Scheinard Ketterer, R.D. #2, Kempton, Pa. 19529. We have been living on our 115 acres dairy farm for 1½ years now. It is 25 miles West of Allentown; really like the area. Have been working part time in OB at Allentown Hospital. Chris is now 2½ years old. We welcome visitors at all times!

Karen Lynch Bayers, 14 E. Madison Ave., Collingswood, N. J. 08108. My husband, William, was admitted to the New Jersey Bar and sworn in as a Deputy Attorney General in November 1969.

Bonnie Sandt, 2430 Fillmore St., #204, San Francisco, Calif. 94115. Position — Staff Nurse Children's Hospital and Adult Medical Center (surgery).

Ellen May Whitehorne, 185 E. Beaver St., Bellefonte, Pa. 16823. The Army is sending Joe to Penn State for his Masters. I guess we are in for the full 20 years. Two children—Nell age 3 and Frances I. They keep me busy but I still manage to work part time.

Judith Larson Moyses, 200 59th St., Virginia Beach, Va. 23451. My husband, Bill, is now a Lt. J.G. in the Naval Reserves. He recently returned from a cruise in the Mediterranean area and I was lucky enough to be able to join him for a few months. He is Training Officer here at Va. Beach and I am doing office nursing for four internists.

Judy Connelly Flynn, 243 Sweetbriar Cr., King of Prussia, Pa. 19406. Our only child, Anne Marie, will be three in May, but we are expecting another in Sept. We moved into our new house last Sept. and just love the space. I am still working at Sacred Heart Hospital in the O.R. My husband, Jack, is in the sales field — traveling.

Elizabeth Ann (Betsy) Maule Zentner, 9745 S. Karlou St., Oak Lawn, Ill. 60453. Transferred to Illinois because of my husband's promotion to Director of Economics, Manufacturing Technical Service, Atlantic-Richfield Oil Co. I work as a Staff Nurse in the Operating Room of Little Company of Mary Hospital, Chicago.

Carolyn Jones Walchak, 1426 Hooli Circle, Pearl City, Hawaii 96782. We are doing a two year tour of duty for the Navy in Hawaii where my husband is a doctor in the submarine service.

Gail Elizabeth Wright Schutz, 321 Bellance Rd., Bricktown, N. J. 08723. My husband, Chuck, finished his first semester at College on the Honor List. I am working full time in the O.R. at Jersey Shore Medical Center and our daughter, Kristine, is 2½ years old and very active.

Dorthea Hamilton, 3229 Santa Cruz Lane, Alameda, Calif. 94501. Just returned from a year of duty at the Naval Hospital in Da Nang, Vietnam. Am presently stationed at Naval Hospital, Oakland, Calif.

Cheryl A. Knauer Weber, 39 Wexford Rd., North Wales, Pa. 19454. I am now head nurse on 10th Floor, CYN, at Jefferson. Husband, Charles, received Ph.D. in June 1969 from Un. of Pa. and is now teaching at Delaware Valley College, near Doylestown.

Carol Shockley Sowder, 740 N.W. 74 Terrace, Plantation, Fla. 33313. Plantation is where we are making our home. We hope to move into our new house in June. Plantation is on the outskirts of Ft. Lauderdale where my husband works in a public mental health clinic. I am enjoying my new experience of working as an office nurse. I am working for one of Tom's medical school classmates.

Judith Abbott Getz, U.S. Naval Hospital, Taipei, Rep. of China, Box 4, APO SF 96263. Don recently made Lt. Cor. We just returned from a 30 day trip to H. K., Thailand, Malaysia, Nepal and India. Will return to Phila. in Sept. Don will start Ortho. Res. with Dr. DePalma.



1966—Karen Shearer Hughes, 3421 West 109th St., Inglewood, Calif. 90303. Birth of second child, a girl, Kelly Lynne, April 4, 1970.

Judith Ellen Neis Horton, 19 Spruce Run Rd., Clinton, N. J. 08809. Moved to a new home in Clinton, N. J.

Judith Hagelgans Hoefle, 1615 S. 14th Ave., Apt. 27, Hollywood, Fla. 33020. Expecting our first child early in June.

Barbara Lynne Shermer Ruchl, 5792 A Erne Ave., Ewa Beach, Hawaii 96706. Expect to return to Bucks Co. area in October — resume full time job in that area by December.

Judith Hartman Emdriss, 1009 Anna Rd., West Chester, Pa. 19390. My husband, Carl, and I have been living in West Chester for three years now. He is an engineer with the Philadelphia Electric Co. We have a daughter, Laura, born September 1967 and a son, Peter, born March 1970. I'm kept busy being a full time housewife and mother.

Nancy Ruth Scull Brainard, 31 Yeoman Drive, Upper Saddle River, N. J. 07458. Stephanie Allen born May 11, 1969. Husband, Don, new assignment flying C-123 transport in Viet Nam — up grading to Captain in August. I am returning to college for Bachelor's degree.

Susane Berkowitz Zamitis, 2011 Ferry Ave., Camden, N. J. 08104. Married Robert Zamitis August 23, 1969. Presently teaching Gynecology at Jefferson School of Nursing.

Brenda Lee Mentzer Hethcake, 19 Jacqueline Drive, Paoli, Pa. My husband is in Viet Nam. He was promoted to Captain a year ago. We had our first child, Karen Louisa, was born Dec. 1968 in Vicenza, Italy.

Edna Carol DuCoin Moan, 1111 Linwood Ave., Collingswood, N. J. 08108. On February 12, 1970, I gave birth to my first child, James Michael Moan.

Jean Frances Lashinski, R.D. #1, Kingsley, Pa. 18826. Currently a junior at U. of Pittsburgh, Pittsburgh, Pa. — major: psychology — minor: biology.

Mona Kadushin, 125 Atkins Ave., Lancaster, Pa. 17603. To be married June 21st, 1970, to Mark Lewis Berch, a fourth year doctoral student in inorganic chemistry at Massachusetts Institute of Technology. I will, also, graduate with a B.A. in Anthropology from the Univ. of Pittsburgh in April 1970. Future plans: psychiatric nursing in Boston.

Joan Sampson Cupic, 1000 Walnut St., Philadelphia, Pa. 19107. Head Nurse — Emergency Dept., Jefferson Hospital. Baby girl born March 1970.

Judith Kennett Tracy, Tracy & Sons Farms, Inc., Jamesville, Wisc. 53545. This year will find John and I hanging up our Captain bars of the U.S. Army. We look forward to our civilian lives as farmers in the corn country of Southern Wisconsin.

Carol Formisano, 4106 Baltimore Ave., Philadelphia, Pa. 19104. Student, University of Pennsylvania — working on B.S. degree.

Marilyn Steadman Alley, 10841 Meadow Lane, Philadelphia, Pa. 19154. I am now in Graduate School at the University of Pennsylvania for my M.S.N. in Psychiatric Nursing. Married to John P. Alley of Philadelphia.

Mary Korosec Kearney, 6787 Ballinger Ave., San Diego, Calif. 92119. I am presently working two nights a week as a Staff Nurse (Medical-Surgical) in a small community hospital in San Diego. The past two summers I have been

involved as an instructor in the JANGOS (a volunteer nurses aide course for teenage daughters of officers in the services). My husband, Don, is Senior Resident in Internal Medicine at Balboa Naval Hospital and in August starts a fellowship in Cardiology here. We have two children: Susan, 2½ years, and Michael, 1 year.

Donna Kocher, Box 9122 USNH, Guam. APO SF 96630. LtJG, Nurse Corps, US Navy; just completed post Grad. course O.R. technique and management at Naval Hospital, Chelsea, Mass.

Mary Ann Bealer Harvey, 5562 Bear Rd., Apt. P-6, N. Syracuse, N. Y. 13212. After being in hospital work for 3½ years, I am leaving that aspect of nursing to be a dormitory director for Upstate Medical Center. I will be working primarily with Freshmen and Soph. Nursing Students.

Linda Valentine Russell, 2936 Rawle St., Phila., Pa. 19149. Husband in service. We're living in Augusta, Georgia, until mid May, then ?? Am working in Pediatrics.

Karen Neubeck, 222 East 19th St., N. Y., N. Y. 10003. My brother, James M. Neubeck, will graduate from Jeff Medical School June 5, 1970.

Gail Lee McKenney Ford, 241 Erial Rd., Sicklerville, N. J. 08081. Staff Nurse — JFK Hospital, Stratford, N. J. Husband — History Teacher and Student Government Advisor, Edgewood High School, Atco, N. J.

1967—Karen Lawer Bedell, 2nd General Hospital, APO New York 09180. Married O. J. Bedell, of Hollister, Calif., in Basel, Switzerland, April 22, 1969. Working in operating room, Landstuhl Army Hospital, Germany — Captain — Army Nurse Corps. John is working on his Masters in Business Administration. We will be returning to California in Sept. 1970.

Diane (Jakabcin) Perkins, 1466 Mt. Diablo Ave., Milpitas, Calif. 91304. My husband, Tom, and I are proud parents of a son, Steven, born Nov. 1969. In May 1970, I will be visiting my parents at 425 Lawrence Rd., Huntingdon Valley, Pa., and would love to see or hear from members of '67 during my visit.

Sharon Rood, 1024 Pine St., Philadelphia, Pa. 19107. Head Nurse — Medical-Surgical — Metropolitan Hospital.

Joan Darden Reed, 1777 Shoreline, Alameda, Calif. 94501. I retired from my position of Head Nurse on Post-Partum at Merritt Hospital in Oakland, Calif., and have a baby girl named Christy, born on Feb. 19, 1970.

Jill L. Simpson, 1024 Pine St., Philadelphia, Pa. 19107. Promoted from Staff Nurse in OB-Gyne to Head Nurse on 6th Floor Gyne Ward.

Dolores (Oaster) Lingo, 4376 Deer Path Lane, Phila., Pa. 19154. Moved into our new home in September 1969. Gave birth to a 8 lb. 3 oz. baby girl on Dec. 13, 1969 — name —Kathleen Marie.

Elizabeth Ortlip Robleto, 3228 B Butternut Drive, Hampton, Va. 23366. Our first child and son born Feb. 12, 1970 — Robert Aurelius, Jr.

Linda L. Strege, 2765 Clayton St., Philadelphia, Pa. 19152. I will be married June 6, 1970 to Michael D. Lauria, M.D., presently a Senior Medical Student at Jefferson.

Linda Zerbe George, 1440 Prospect Drive, Wilmington, Del. 19809. Presently working as Charge Nurse part time at Riverside Hospital, Wilmington.

Denise Fitzsimmons McKee, 246 Kent Rd., Springfield, Pa. 19064. Married Sept. 27, 1969.



Anita Gabriel, 227 Winchester St., Brookline, Mass. 02146. I have been Head Nurse since June 1969 of a male medical ward at Mass. General Hospital.

Virginia Buehler Taylor, Brandywine Drive, R.D. #2, Coatesville, Pa. 19320. We are having a new house being built at this address and hope to move in by May. My husband, Robert, attends the Un. of Del. for his Masters in Business Administration. When he finishes, I plan to return to school for my degree. My daughter, Kelly, is almost 10 months old and is a delight to us. In December, I was a member of Jane Parks' bridal party along with Alice Jean Rennwanz Munson (1967) and Cheryl Peters Markle (1967). Poor Cherie never made the wedding because of the dreadful weather. Jane is now living in Mississippi while her husband works toward his law degree. I look forward to reading the Bulletin soon.

1968—Katherine Lee Hannah Haywood, 27 Center St., Elmer, N. J. 08318. Birth of 5½ lb. daughter, named — Donna Lee, January 11, 1970.

Nancy Jones, 30 Sussex Drive, Willingboro, N. J. 08046. Promoted to Head Nurse — Medical-Surgical Unit.

Shirley Dubis Poling, 5045 Prescott Ave., Dayton, Ohio 45406. New member, Michael David, born Oct. 4, 1969.

Ruth Montgomery Penta, 4859 Sheboygan, Madison, Wisc. 53705. Married Dr. John Penta, also a Jeff graduate, June 4, 1969.

Carol Cohen Leventhal, 1026 Clay Ave., Scranton, Pa. Have been living at Ft. Sill, Okla. while husband is stationed here for Army. Husband leaves for Vietnam in Sept. as 1st Lt., and I will return home to Scranton to work.

Regina Rosenfeld Friedman, 1410 72nd Ave., Phila., Pa. 19126. Husband, Irwin, is graduating in May from Temple Un. Med. School. Will intern at Abington Hosp. Birth of first child, Elisa Beth, March 24, 1970.

Eileen Cannon, P.O. Box 157, Eloise, Mich. 48132. Coronary Care Unit, Staff Nurse at Wayne County General Hospital, Eloise Mich., my present employment.

1969—Eleanor Rae Clawson Suback, 7800 Fairfield St., Phila., Pa. 19152. My husband, Ronald, has been promoted and became Assistant Controller of Parkview Hospital, Inc.

Linda Barbour, 102 C Haddon Hills, Haddonfield, N. J. 08033. After working at Jeff for 2 months, went to NYC to work in Memorial Cancer Hospital. Have traveled to the West Coast two times and to Jamaica and the Bahamas.

## MARRIAGES

Mildred (Greenlee) Durham, 1939  
Elaine (Schappert) Haines, 1946  
Anne Daphine (Miller) Sphon, 1947  
Shirley (Hill) Walker, 1958  
Judith (Lingenbrink) Linker, 1964  
Jeraldine (Marasco) Kohut, 1964  
Susane (Berkowitz) Zamitis, 1966  
Marilyn (Steadman) Alley, 1966  
Mona (Kadushin) Berch, 1966  
Jane (Kazelis) Kriebel, 1967  
Karen (Lawer) Bedell, 1967  
Linda (Strege) Lauria, 1967

Denise (Fitzsimmons) McKee, 1967  
Amber (Phillips) Smith, 1967  
Ellen (Buechley) Freeze, 1967  
Linda (Mayse) Peterson, 1968  
Carolyn (Kinna) Smith, 1968  
Katherine (Hannah) Haywood, 1968  
Sandra (Payne) Kenton, 1968  
Jill (Reichard) Tropaia, 1968  
Halina (Piekarska) Warmbrod, 1968  
Elizabeth (Masten) Cahall, 1968  
Ruth (Montgomery) Penta, 1968  
Eleanor Rae (Clawson) Suback, 1969

## BIRTHS

Audrey (Titlow) Priga, 1955  
Baby Girl  
Dawn (Deitman) John, 1955  
Baby Boy  
Rose Marie (Yuhas) Dudas, 1957  
Baby Girl  
Audrey (Taylor) Meunier, 1957  
Twins—Boy and Girl  
Lois (Boeckel) Toomey, 1958  
Baby Boy  
Mabel (Rennebaum) Hollender, 1958  
Baby Girl  
Betty (Rockefeller) Laird, 1959  
Baby Girl  
Anne (Major) Jones, 1959  
Baby Boy  
Susanne (Williams) Jacobson, 1961  
Baby Girl  
Patricia Anne (Michaels) Calhoun,  
1961 Baby Boy (2/11/69)  
Sue (Lehman) Rice, 1962  
Baby Girl

Frances Suzanne (Rumberger) Carter,  
1962, Baby Boy  
Joyce Ann (McHugh) Kormannis,  
1962, Baby Boy  
Janet (Powell) Wolf, 1962  
Baby Boy  
Phyllis (Sutthill) Johnson, 1962  
Baby Boy  
Louise (Baxter) Fox, 1962  
Baby Boy  
Ellen (Geaspey) Willard, 1962  
Baby Girl  
Carole (Rees) Slonaker, 1963  
Baby Boy (1/8/69)  
Nancy Ann (Smith) Hamme, 1963  
Baby Boy  
Theresa (Robson) Cooke, 1963  
Baby Girl  
Carol (Bailey) Miller, 1964  
Baby Girl  
Joan (Munz) Manno, 1964  
Baby Boy



Marilyn (Miller) Long, 1964 Baby Girl	Mary (Koeosec) Kearney, 1966 Baby Boy (1969)
Lynn (McMaster) Magani, 1964 Baby Girl	Joan (Reed) Darden, 1967 Baby Girl
Barbara (Lenker) Tredick, 1964 Bay Boy (2/28/69)	Diane (Jakabcin) Perkins, 1967 Baby Boy
Dorothy (Kessler) Rosecrance, 1965 Baby Girl	Dolores (Oaster) Lengo, 1967 Baby Girl
Karen (Shearer) Hughes, 1966 Baby Boy	Elizabeth (Ortlip) Robleto, 1967 Baby Boy
Judith (Hartman) Endriss, 1966 Baby Boy	Virginia (Buehler) Taylor, 1967 Baby Girl
Edna Carol (DuCoin) Moan, 1966 Baby Boy	Katherine Lee (Hannah) Haywood, 1968, Baby Girl
Joan (Sampson) Cupic, 1966 Baby Girl	Shirley (Dubis) Poling, 1968 Baby Boy
Nancy Ruth (Scull) Brainard, 1966 Baby Girl	

---

#### DEATHS

Rachel (Bland) Campbell, 1902	Maude (Gantz) Busch, 1925
Florence Carnahan, 1906	Dorothy (Engle) Daniels, 1926
Martha (Brook) Watkins, 1909	Margaret (McKinney) Cassaday, 1926
Ruth Bray, 1910	Alma (Roush) Ross, 1928
Grace Boller, 1914	Vera Shantz, 1930
Myrtle (Brewer) Thrasher, 1916	Olga (Chomezak) Weiss, WH 1933
Almira (Rhule) Kutz, 1921	Elizabeth (Koegel) Wardell, 1936
Rena White, 1923	Lillian Saunders, 1937

THOMAS JEFFERSON UNIVERSITY

COLLEGE OF ALLIED HEALTH SCIENCES

SCHOOL OF NURSING



## STUDENT ACTIVITIES

Student Council began the year 1969-70 by holding the Annual Student-Faculty Picnic on September 29th in Fairmont Park. In the traditional picnic style, students and faculty roasted hotdogs and marshmallows and participated in the games that followed. The picnic also served as a welcome to the new freshman class.

The school newspaper, *Caps and Capes*, was reorganized this year under the capable direction of Miss Jane Lease, a junior.

Fund raising was a small part of the council's agenda this year. Donut sales were held on the first floor of the Forderer Pavilion every third Thursday of the month. A bargain sale of sweatshirts, school supplies etc., left over from the school store was held at the beginning of the year. The school store was phased out due to the supply store available in the Commons.

A student Halloween party was held on October 30th. Prizes were given to the students with the best costumes. We were pleased to see a few of the instructors and housemothers participating in the fun, in costume.

The student body of the School of Nursing unanimously opposed the proposal to grant free use of all the Commons facilities to the entire staff at Jefferson. Student utilization of the facilities was encouraged. Advertising was brought to the residence by the student members of the Commons Social Committee to make the students more aware of the social events available at the University Commons.

Christmas activities included a caroling party in the residence lounge with refreshments and a semi-formal held in the Commons on December 19th. The theme for the affair was "Winter Wonderland" carried through with blue and silver decorations. The School of Nursing Department of the Women's Board did a beautiful job of decorating our residence in true holiday style. The students added a touch of festivity by painting their windows with the various scenes of Christmas. Miss Prevost, Miss Bowman, and Mrs. Stoddard had the difficult job of selecting the three best windows.

Our Valentine's party was "Cupid's Capers" brought back by popular demand. Names are drawn secretly. Each girl leaves gifts and clues of identity to her caper through the week. A party is held at the end of these activities to guess who the "cupid's" are.

Twenty of our students helped with the Amblyopia Screening Tests for children at Gimbels on February 14th. The tests were sponsored by the Philadelphia Chamber of Commerce.

The Council has been busy all year investigating the possibilities of establishing a new official school ring. The group unanimously agreed on a medium sized 10K gold ring with a black onyx stone. Initials and the year of graduation are engraved on the inside of the band.

The Spring Formal will be held June 20th in the Commons. This will be the final activity which the present council will sponsor this year.

Our pet project this year is the sponsorship of an Indian child through the Luthern Social Services in Sioux Falls, South Dakota. Curt is our project. He is a cute, vivacious little Indian boy who has just turned three. He is stockily built and can be described as being "solid as a rock". His dark hair and sparkling eyes bespeak his Indian Heritage. He was born on a reservation in South Dakota and presently lives with a foster family until a permanent home can be established for him. Our job as sponsors is to send him any articles that he will be able to use (clothes, toys etc.), and provide financial assistance. The Luthern Social Services keeps us up to date on their planning for the little fellow through quarterly progress reports.

The Ad Hoc Committee on rules and regulations has finished their business of the year. The new rules and regulations passed last year were evaluated on their effectiveness and permanently approved. Minor changes and a few major changes were proposed and approved. An official booklet is in the planning to be completed before the class of 1973 arrives in September.

Council members represented the student body on the Commons Board again this year. The Student's Rights, Freedom and Discipline Committee finished its work early in the year and the document was approved by all the schools in the University. Several of our students were members of this committee.

An official student nurses chorus is being organized for all interested students. Rudolph A. Lucente, Chairman of Clinical Instrument Services of Thomas Jefferson University Hospital and his wife are the sponsors. Both have an experienced background in music. Mr. Lucente hopes the chorus will be available to make extended guest appearances.

As the President, I believe that Student Council is taking an efficient and active role in the governing of the student body. Adequate social activities are being provided for the students by the council and the University Commons is doing a fine job enriching our experience with cultural, educational and social events. The possibilities for the success of our organization is greater than ever due to the growing interest and enthusiasm of the student body, faculty and administration. We look now to closer ties with the alumnae with hopes that they may want to take a more active interest in their alma mater.

JILL A. ROBERTS,

*President, Student Council*

## CLASS NEWS

The Senior Class, '70, under the direction of Miss Gail Johnston will begin terminal vacation August 13th. Graduation is September 12th at the Sheraton Hotel. Sixty-three seniors will be graduating. The class, this year, sponsored pizza and hoagie sales, a hot dog and bean dinner, and the Senior Spaghetti dinner. The class instituted a Freshman-Senior "Get-acquainted Party" at the beginning of the year to promote closer ties with the underclassmen. The yearbook will be available after July 22nd. Miss Moyer and Miss Blake are the co-editors. Miss Roberts, Student Council President, Miss Johnston, Senior Class President, Miss Kelly, House President and Miss Moyer, Yearbook Editor, represented the school as hostesses at the convocation program of the American College of Physicians at the Spectrum in April. This was a convention of over 3000 physicians from all 50 states and many countries all over the world. The seniors will be representing their school in many hospitals all over the country following graduation. Many girls plan to stay and work at Jefferson. Others will be traveling to New York, New Jersey, Washington, D.C., Virginia, Florida, Massachusetts, etc. Many students plan to attend college full time to work for a degree in nursing.

Miss Mary Feeney is the President of the Junior Class. They have had a busy year sponsoring french fry sales, cake, milk and candy sales in preparation for their yearbook next year.

The Freshmen Class is under the direction of Miss Karen Swartz. They have been busy with various money making projects and their Continental held in the recreation room was a big success. They are busy now collecting many items to send the American Armed Forces in Vietnam. A Freshman Mother-Daughter Dinner will be held in the Commons in May.



## BASKETBALL TEAM

Under the outstanding coaching abilities of our new coach, Mr. Sol Binik, the Jefferson Student Nurses basketball team displayed the type of teamwork deserving of championship team. Yet, due to an upset by Einstein and another loss to Presbyterian Hospital, our fine team ranked third in their league of eight teams.

A new and special attraction highlighted this year's season. Jefferson was the host of the First Annual Invitational Basketball Tournament for Student Nurses at the Jefferson Hall Commons gymnasium. Four teams: Presbyterian, P. G. H., Pennsylvania, and Jefferson were invited in an elimination tournament held on two nights at our gym. The outcome: P. G. H. - first place, while Jefferson received the second place trophy.

To end a very successful season, we also participated in an All-Star Game which included 2 girls from our team as well as 15 other area hospitals. Our opponent was a team comprised of all the coaches. Needless to say, the girls were defeated, but much enjoyment was had by all as was true the entire season.

CHRISTINE REED

## "THAT AWKWARD FIRST YEAR"

If this is what nursing is all about — a lot of freshman are learning the clinical areas with that zealous light in their eyes somewhat dimmed. After a quiet, impressive capping ceremony, the trepidation of trying on a brand new uniform and the practice lab sessions, many are finding their clinical experience a bitter letdown. Many feel they have made a grave mistake, that nursing is not what they expected it to be.

I'm sure you'll agree that the first clinical rotation (or two) is about the most unnatural nursing experience you will ever suffer through. You perform a few rudimentary tasks under constant guarded supervision. Somehow the tasks you performed in nursing lab so easily are next to impossible with an Instructor watching your every step. You feel awkward, tongue-tied and so upset about getting that corner right that you can't talk to your patient.

You may even feel ill at ease in your new role as a student nurse. How do you tell someone it took you an hour to make one bed? Or that you counted 18 breaths and your Instructor counted 20? It may get so bad that when a patient calls out "NURSE" that you look for someone in a cap and white uniform.

I wish I could think of a better system — I can't. You DO know relatively few procedures and need supervision at this point. The only thing you can do now is to do your procedures well to get signed off. Supervision will lessen in time and with it comes independence and confidence in your abilities as a nurse.

## HIGHLIGHTS OF STUDENT ACTIVITIES

Marshmallow on the rocks was the typical scene at our student-faculty picnic in Fairmount Park last September. The picnic tables were loaded high with food which rapidly diminished — we all know the insatiable appetite of student nurses. After gorging ourselves we divided into teams for the various games, and even managed to find room for the pie-eating contest. It really was a nice change after working all day in the hospital, and we came home tired but happy.

By the efforts of the Class of 1971 and their advisors a new tradition "The Mother-Daughter Banquet" was initiated. It has been a large success both years,

and our Moms had a chance to see how talented we really are with our terrific entertainment. It was held in the new Jefferson Commons, which added just the right touch.

Also in the Commons has been our semi-formal Christmas dance with everyone in beautiful shades of velvet, a flickering silver strobe light hung from the ceiling casting a wintry atmosphere around us. On June 20th, the Spring Formal with a buffet supper at midnight should also prove to be a good time for all those that attend.

Perhaps the most well known event of the year is our own "Miss Jefferson Contest" which is sponsored by the school newspaper "Cape and Capes". Dr. Karden from EENT Clinic was the Master of Ceremonies, and did a great job putting the contestants at ease. All of the girls' tension and anticipation reached a climax as the winner was announced and a gorgeous bouquet of red roses was placed in her arms. The two runnersup received perky pink and white corsages, and smiles were abundant everywhere.

There are many other interesting things throughout this year that will be cherished long after graduation to be remembered and shared only by those who have experienced them — for we all know that wherever you find a student nurse, action and fun are sure to follow.





	1	2	3	4	5	6	7	8	9	10													
	M	C	C	L	E	L	A	N	H	E	R	B	U	T									
11	C	I	A			F		12	A	T	O	P		14	E	L	H						
	15	S	T			F		C		16	R	O	S	E		19	U	R	I				
20	J	O	H	21	N		22	23	I	T		24	M	A		25	H	A	R	E	R		
U		26	A	A		27	E	R	I	E		28	M	A	R					29	D	T	
30	B	O	R	I	31	S		O		L		32	O	L		33	34	A	R	M	Y		
G		35	I	L	I	O				V		37	38	L	I	V	E				E		
E				39	M	T			40	G	I	B	B	O	N				42	D	B	I	
	43	B	E	N	S	O	N		45	L	E		46	W	T							G	
47	C	O		E					48	L	A								49	B		H	
50	A	Z	51	A		52	J	E	T	F	E	R	54	S	O	N			55	A	E	T	
N		N		A		O									56	57							
O		58	59	I	Z	C		R			60	E	V	E		62	H	E	M	63	I		
64	Z	O	S	O	K	O	M	O	65	S		66	E	D								R	
S															67	G	R	O	68	S	S		
69	70		71	N	O	E	L		72	H	O	T											
73	U	N	I	O	N										74	H	O	M	E				
75	R	V								76	T	O	N	E								77	B
G		78	P	R	E	V	O	80	S	T													R
				82	V	I				83	I	N	N			84	T	E	N	O			
85	86			87	E	N																	E
88	B	R	O	E	N	E	L	L	E	P			89	B	A	R	T	O	N				Z

## JOIN YOUR ALUMNAE ASSOCIATION

### MAIDEN NAME—YEAR OF GRADUATION

Whenever you have occasion to write your Alumnae Association, PLEASE use your first name, maiden name, married name, and the year you graduated.

Example: Jean Smith Doe, 1940.

"Mrs. John Doe" makes it very difficult for us to locate your card in the files. Every effort has been made to obtain correct names and addresses for all alumnae. You are urged to notify the Secretary of the Alumnae Association of any corrections, marriages, deaths, and changes of address.

### ALUMNAE BULLETIN

The Alumnae Bulletin will be sent to members only. Non-members may obtain a copy upon request. The price of the Bulletin will be increased with the 1971 issue. A request card will be mailed to all graduates in the Spring of 1971.

### CAPS

Jefferson caps may be purchased at C. D. Williams and Company, 246 S. 11th St., Philadelphia, Pa. 19107. Cost per cap is 70c plus postage.

Identification may be obtained by directing correspondence to the Director, School of Nursing, Thomas Jefferson University, 11th and Walnut Streets, Philadelphia, Pa. 19107.

### PINS

Jefferson pins may be purchased at J. E. Caldwell and Company, Chestnut and Juniper Streets, Philadelphia, Pa. 19107. Cost per pin is \$15.75 plus tax and postage.

Identification may be obtained by directing correspondence to the Director, School of Nursing, Thomas Jefferson University, 11th and Walnut Streets, Philadelphia, Pa. 19107.

### TRANSCRIPTS

All requests for transcripts should be submitted in writing to the Director, School of Nursing, Thomas Jefferson University, 11th and Walnut Streets, Philadelphia, Pa. 19107. Requests should be submitted at least a month prior to the date needed. There is no charge for the first transcript which is done but there is a \$2.00 fee for each additional transcript. Checks should be made out payable to School of Nursing, Thomas Jefferson University.

## ALUMNAE DAY—FIRST SATURDAY IN MAY



