

1972

Alumnae Association Bulletin of the School of Nursing, 1972

Margaret Summers

Doris E. Bowman

Elizabeth J. Sweeney

Mary Louise Soentgen

Elizabeth Stone Miller

See next page for additional authors

Let us know how access to this document benefits you

Follow this and additional works at: http://jdc.jefferson.edu/nursing_alumni_bulletin Part of the [Nursing Commons](#)

Recommended Citation

Summers, Margaret; Bowman, Doris E.; Sweeney, Elizabeth J.; Soentgen, Mary Louise; Miller, Elizabeth Stone; Hughes, Dolores; Prevost, Mabel C.; Riland, Martha E.; Piersol, Betty; Burt, Charlotte Moore; Voss, Charlotte; and Diseroad, Rose, "Alumnae Association Bulletin of the School of Nursing, 1972" (1972). *Nursing Alumni Bulletins*. Paper 42.

http://jdc.jefferson.edu/nursing_alumni_bulletin/42

Authors

Margaret Summers, Doris E. Bowman, Elizabeth J. Sweeney, Mary Louise Soentgen, Elizabeth Stone Miller, Dolores Hughes, Mabel C. Prevost, Martha E. Riland, Betty Piersol, Charlotte Moore Burt, Charlotte Voss, and Rose Diseroad

ALUMNAE ASSOCIATION BULLETIN
of the
SCHOOL OF NURSING

1891



1972

COLLEGE OF ALLIED HEALTH SCIENCES
THOMAS JEFFERSON UNIVERSITY
PHILADELPHIA, PA.

ALUMNAE ASSOCIATION BULLETIN
of the
SCHOOL OF NURSING
COLLEGE OF ALLIED HEALTH SCIENCES
THOMAS JEFFERSON UNIVERSITY

TABLE OF CONTENTS

	Page
PUBLICATION COMMITTEE	
Alumnae Calendar	2
The President's Message	3
Officers and Chairmen of Committees	4
Financial Report	4
Address by President Herbut	5
School of Nursing Report	6
School of Practical Nursing Report	7
Report by Dr. Mary Louise Soentgen, M.D., F.A.A.P.	8
Report of Patient Services Department	9
Report of Staff Nurses' Association	9
Progress Report of Hospital Activities	10
Scholarship Committee	11
Report — Clerk-Typist	11
Annual Luncheon — Head Table	12
Social Events for 1971-1972	13
Missing Alumnae Members	13
Jefferson Today	14
Ways and Means Committee Report	15
Constitution and By-Laws Report	17
Sick and Welfare Committee	17
Women's Board Report	17
Baccalaureate Degree Program	17
Luncheon Pictures	18
Resume of Minutes of Alumnae Association Meeting	20
Class News	23
Poem by Rosa Diseroad — 1923	30
Marriages	31
Births — "Hello World"	31
In Memoriam	32
Notices	Inside Back Cover
MAILING	
Martha Riland '27	
CREDITS	
Department of Public Relations Thomas Jefferson University	
PUBLISHED ANNUALLY BY	
Alumnae Association of the School of Nursing College of Allied Health Sciences Thomas Jefferson University 11th & Walnut Streets Philadelphia, Pa. 19107	

ALUMNAE CALENDAR 1972 - 1973

- September 12
Regular meeting — Jefferson Hall, 10th and Locust — 7:00 P.M.
- October 10
Regular meeting — Jefferson Hall, 10th and Locust — 7:00 P.M.
- November 14
Regular meeting — Jefferson Hall, 10th and Locust — 7:00 P.M.
- December
Christmas dinner (time and place to be announced later)
- January 9
Regular meeting — Jefferson Hall, 10th and Locust — 7:00 P.M.
ELECTION OF OFFICERS
- February 13
Regular meeting — Jefferson Hall, 10th and Locust — 7:00 P.M.
- March 13
Regular meeting — Jefferson Hall, 10th and Locust — 7:00 P.M.
(Dinner meeting may be held — time and place to be announced later.)
- April 10
Regular meeting — Jefferson Hall, 10th and Locust — 7:00 P.M.
- May 5
ANNUAL LUNCHEON
- May 8
Regular meeting — Jefferson Hall, 10th and Locust — 7:00 P.M.



A MESSAGE FROM THE PRESIDENT

It is my privilege and honor to be elected to serve as your President, which office I accept with humility and pride.

It gives me great pleasure to announce that President, Peter A. Herbut has generously provided a suite of rooms to be used as our Alumnae Offices, located in Jefferson Hall.

The ensuing years give promise of being exciting ones at Jefferson and the Nurses' Alumnae Association is justly proud to be included in the growth and development of Thomas Jefferson University. In spite of the rapid growth and the many changes at Jefferson — the spirit of friendliness and concern has not changed. This was evidenced when the Alumnae Offices were moved from Thompson Building to Jefferson Hall.

The success of our Association depends upon the continued support and cooperation of each one of us. Can we count on you!

Sincerely yours,

Margaret Summers

Margaret Summers, Class of 1941

ALUMNAE ASSOCIATION
OF THE
SCHOOL OF NURSING
COLLEGE OF ALLIED HEALTH SCIENCES
THOMAS JEFFERSON UNIVERSITY

OFFICERS

President
MARGARET SUMMERS, '41
First Vice President
MARY ANN STAUFFER, '54
Second Vice President
DOLORES HECKENBERGER, '55
Recording Secretary
LENORA W. SCHWARTZ, '66
Secretary-Treasurer
CAROLYN MASUDA, '37

BOARD OF DIRECTORS

ELOISE HIPPENSTEEL, '52
JUDITH JOHNSON, '65
EVELYN R. CURRAN, '35
JANET HINDSON, '50
JANET OSTERHUS, '67
FLORENCE ROCHE, '56
(ex-officio)

COMMITTEE CHAIRMEN

By-Laws
ELIZABETH S. MILLER, '36
Bulletin
MARGARET COSSMAN, '47
Co-Chairman
FLORENCE ROCHE, '56
Membership
DEIDRE WATKINS, '67
Nominating
EVELYN W. FRAZIER, '34
Social
JANET HINDSON, '50
Scholarship
DORIS BOWMAN, '42
Sick & Welfare
JEANETTE PLASTERER, '51
Ways & Means
BETTY PIERSOL, '34

FINANCIAL REPORT

December 31, 1971

Receipts:

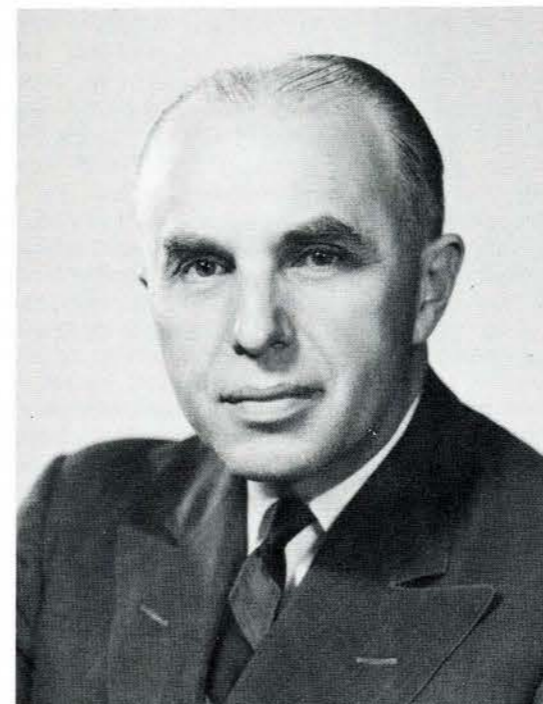
Dues and Re-instatement of Members	\$ 4,589.40
Sale of Bulletins	296.00
Annual Luncheon Reservations	1,688.10
Interest on Savings Accounts	1,580.98
Miscellaneous	1,654.50
Annual Giving Contributions	
General Fund	1,682.00
Relief Fund	410.00
Scholarship Fund	697.00
Adele Lewis Memorial Fund	3,112.00
Total Receipts	\$15,709.98

Disbursements:

Annual Luncheon Expense	\$ 2,001.15
Printing, Mailing, Stationery & Bulletin	4,633.39
Sick Benefits for Members	1,813.38
Graduation Prizes	125.00
Contributions, United Fund and Christmas Seals	175.00
Other Operating Expenses	2,473.09
Gifts for Shut-Ins	130.00
Charms	2,695.20
Total Disbursements	\$14,046.21

Cash Balance as of December 31, 1971

General Fund:	
Checking Account	\$ 1,513.34
Savings Account	1,070.21
Relief Fund	16,459.15
Building Fund	1,108.04
Adele Lewis Memorial Fund	9,382.34
Thomas A. Shallow Fund	2,354.62
Scholarship Fund	2,261.23
	\$34,148.93



EXCERPTS FROM THE ADDRESS
BY PRESIDENT HERBUT TO THE MEMBERS
OF THE ALUMNAE ASSOCIATION AT THE
ANNUAL LUNCHEON ON MAY 6, 1972

Madam Chairman and ladies of the Alumnae Association, I am delighted to be here and to say a few words. Some of you undoubtedly know that I would never pass up the opportunity to expound on the new Jefferson. Much has happened since some of you graduated, and certainly, since our School of Nursing was launched in 1891.

Ours is a dynamic society, change is the order of the day, and we at Jefferson eat, sleep, and dream of change. However, we espouse change — not for the sake of change, but because we must alter our attitudes; raise our sights; keep up with the times, and even lead the way. Thus, we at Jefferson have been working, literally, day and night, not only to keep our Institution afloat, but also to make it the best anywhere. This afternoon I wish to tell you some of the changes that have transpired, and others that are on the drawing board.

Land Acquisitions — We now have 1) the entire block — Walnut and Sansom, Tenth and Eleventh, 2) the entire block — Locust and Walnut, Tenth and Eleventh, 3) one half block — Locust and Spruce, Tenth and Eleventh, 4) western two-thirds of the block — Locust and Walnut, Ninth and Tenth, 5) most of the properties — Sansom and Chestnut, Tenth and Eleventh.

Buildings — in addition to the Main Hospital, Thompson Annex, Curtis Clinic and Medical College; we now have — 1) Foerderer Pavilion, 1954, \$8,336,000.00, 2) James Martin Nurses Residence, 1959, \$1,956,000.00, 3) Jefferson Hall, 1968, \$17,543,000.00, 4) Orlovitz Residence, 1968, \$4,755,000.00, 5) Scott Building, 1970, \$4,693,000.00, 6) Junto Building, 1129 Walnut Street, 1968, \$190,000.00, 7) S.S. White Building, 211-217 South Twelfth Street, 1971, \$841,000.00.

On the Drawing Boards — 1) Residence Commercial Complex, East of Tenth Street, \$6,000,000.00, 2) Clinical Teaching Facility, Sansom to Chestnut, \$90,000,000.00, 3) Dental, Allied Health Science, Continuing Education (currently Parking Lot) Locust Street, \$24,000,000.00.

Programs — With them, we have everything. Without them we have nothing. At the present time we have three main programs, 1) Jefferson Medical College, 2) College of Graduate Studies, 3) College of Allied Health Sciences. We are contemplating a fourth main program, College of Dental Medicine. Jefferson Medical College remains the basis of Jefferson. Started in 1824, has University Charter since 1838, graduated 21,669 physicians, has almost 7,000 living Alumni who just celebrated the 100th Anniversary of the Alumni Association.

College of Graduate Studies started in 1949, has granted a total of 197 M.S. or Ph.D. degrees. It has as its main purpose, the training of medically oriented persons who serve as teachers in medical schools, para-medical schools, and other health related colleges and universities.

College of Allied Health Sciences started in 1967, encompasses all areas of medical education, including nursing, medical technologies, and physician's assistants. Of particular interest to you, is NURSING EDUCATION. This is now part of our College of Allied Health Sciences. 1) The Diploma School of Nursing has been in continuous existence since 1891. We are proud of this School, and we are exceedingly proud of you, its graduates, and its Alumnae. You will be glad to know that we have every intention, not only of continuing the Diploma School, but to make it better than it is. This program is under the capable hands of Doris E. Bowman.

A second nurse training program which we intend to continue is the SCHOOL OF PRACTICAL NURSING. This program is under the direction of Miss Elizabeth J. Sweeney since it started in 1964.

A third program, which we hope to inaugurate in September 1972, is BACCALAUREATE DEGREE NURSING. Dr. Charlotte E. Voss, Chairman, Department of Baccalaureate Degree Nursing Education, has the enormous task of planning a curriculum — hiring teachers — gaining accreditation — getting financing and keeping everyone smiling. That is quite a job, but we are all absolutely certain she can and will do it.

Finally, as far as College Credit Courses at Jefferson are concerned, we now give almost a sufficient number to grant an Associate Degree. These courses are available to, and taken by, students in our Diploma School of Nursing while they are in training. Thus, they get credits toward a degree while they are on campus.

Since your program was essentially in the Hospital, I want you to hear a few words about our Thomas Jefferson University Hospital. It started as an Infirmary in 1824, became a Hospital in 1877, consists of 770 beds, comprises three old buildings, all obsolete, and has as its purpose — care of patients, clinical investigation, and clinical teaching of all students at Jefferson. Because our hospital facilities are obsolete, and because it is the nerve center of all four clinical programs, we are contemplating building an entirely new structure which will be called our Clinical Teaching Facility. This building will cost about \$90,000,000, and it will be different from any hospital complex anywhere in the world.

Finally you may want to know why THOMAS JEFFERSON UNIVERSITY. This name came into being on July 1, 1969, because the old name, THE JEFFERSON MEDICAL COLLEGE OF PHILADELPHIA, no longer described accurately all the programs we were conducting. Contrarily, we thought the caption UNIVERSITY was appropriate, because we were in the business of offering courses of study leading to Diplomas and Certificates; Bachelor of Science; Master of Science; Doctor of Philosophy and Doctor of Medicine degrees. Since we were named after Thomas Jefferson, we selected the full name THOMAS JEFFERSON UNIVERSITY.

With all this, our avowed direction will continue to be health related — medically oriented.

I hope this will give you some idea of the dynamic state of affairs at your Alma Mater. This is your School — your University. I hope you continue to be as proud of it, as we are of you. I hope also, that you will become involved in our — in your affairs. We want you to exercise your prerogatives as part of THE JEFFERSON FAMILY.

SCHOOL OF NURSING

Annual Report to the Alumnae Association

Despite the recommendations of the Report of the National Commission on Nursing and Nursing Education and, especially, the recommendation that all programs preparing the professional nurse should be within institutions of higher learning, diploma programs in the Southeastern District of Pennsylvania, including our program, have experienced a great increase in the number of students seeking admission.

For the first time in many years, we have had our quota of applicants by March, and found it necessary to stop accepting additional applications. While we prefer to have a maximum class of 90 due to limited facilities, in view of present nursing needs, we plan to admit a maximum of 117 students in September 1972. The average enrollment during 1971-72 was 230 students. One hundred and two students were admitted in September 1971. Black admissions have been our only recruitment problem. In an effort to help black applicants qualify for admission, we planned a second remedial program for a group of 11 disadvantaged students, during the summer of 1971.

We, at present, have not only maintained enrollment, but believe we can safely say that we still maintain a quality program, at the diploma level. Scores for the State Board Examinations for graduates in the class of 1971 ranked above the State and National Means, except in the area of psychiatric nursing. Certain changes made in the course, we hope, will in another year remove this exception. Results of the Graduate Follow-up Study we initiated beginning with the graduating class of 1970 help to verify our feeling that our graduates rank very high in the ratings of employers as to their nursing abilities in beginning positions as compared with the graduates of other types of programs.

Commencement Exercises were held on Saturday, June 26, 1971, in the Ballroom of the Sheraton Hotel. Dr. Dorothy Novello, Chairman of the State Board of Nurses Examiners, and Chairman, Division of Nursing, Villa Maria College in Erie, was the guest speaker. Her message was of timely interest to the students as well as to parents and friends. Of the 57 members of the graduating class, 26 returned to Jefferson as members of the Nursing Service and/or Operating Room staff. Eileen Blum was the recipient of the Alumnae Association Prize for having attained the highest average and Kathryn VanDyke the Thomas A. Shallow Award for having demonstrated proficiency in operating room technique. The Carolyn B. Brown Award was given for the first time, in memory of the wife of our faithful Board member, Mr. Revelle W. Brown.

Student activities were many and varied, with the Basketball Team bringing home two trophies to add to our growing collection. Our winning streak began with a pre-season victory over PGH at the Spectrum. The big game marked the first time the two schools of nursing had been invited to play a "Pre-76'ers" game. Adding to the excitement of the evening was the arrival of the School of Nursing Department (Women's Board) gift of new uniforms — black and blue plaid kilts and light blue blouses — just an hour before the team left for the game. The hard work and conscientious endeavor of all members of the team, as well as the coach and faculty advisor, paid dividends — the Southeastern Pennsylvania Student Nurses' Basketball League Championship won over Bryn Mawr!

Post-season activity included victory for us in the Third Annual Jefferson Invitational Tournament. Tournament participants, as in the past, were Lankenau, Pennsylvania, HUP, PGH, Presbyterian and Jefferson. PGH won the title the first year but since then it has been exclusively Jefferson's.

Each season culminates in a banquet. This year was no exception. Through the generosity of the School of Nursing Department of the Women's Board, the banquet was held at the Three Three's Restaurant. To the delight of the entire team, senior Deborah Waters received the 1972 Thomas Jefferson Award for Athletic Achievement. Miss Waters received an engraved Revere Bowl and her name was inscribed on the award plaque which currently hangs beside the trophy case.

Other student activities include a Big-Sister/Little-Sister party on September 27; a Halloween party; a Christmas party with the traditional singing; a Valentine party on February 16 with traditional "Cupid Capers"; and many fund-raising projects.

The Student Nurses' Chorus, under the direction of Mr. Rudolph A. Lucente, Director of Clinical Instrument Services of Thomas Jefferson University Hospital, performed a concert in McClellan Hall. During the Christmas Season, the halls of Jefferson hospital were filled with the familiar sounds of Christmas music, with the chorus participating. The Chorus is anticipating singing at the Graduation Exercises to be held at the Sheraton Hotel, June 3, 1972.

The Jefferson Hall Commons continues to provide a varied recreational program for students. Besides the use of the swimming pool and basketball court, the students were invited to take part in the traditional T.G.I.F. parties; Movie Marathons; "Picnic Day" held on Saturday, May 13, etc. This year the nursing students were invited to the Annual Black and Blue Ball held in Jefferson Hall.

The refurbishing of the main lounge in the Martin Residence was completed through the generosity of the School of Nursing Department of the Women's Board, the focal point being a portrait of Miss Clara Melville, Director of the School from 1915 to 1937.

For the first time, the Martin Residence was used as a housing facility for other female students within the university. The entire second floor was used for this purpose.

We are most appreciative of the six paintings recently received from the class of 1963 to be hung in the student lounges of the six floors occupied by nursing students in memory of Ann Hart Preston, who died on March 16, 1971. The paintings were done by Harriet Myer of Dover, Delaware.

The academic years slip quickly by, and while there are natural similarities between them, each has its own facets of particular interest and, as this year, of relevance to contemporary trends. As graduates, we hope that you continue to be interested in the progress of your school and feel free to stop by to visit if you are in the area. If you live nearby, we usually have available positions!

Doris E. Bowman,
Director, School of Nursing

SCHOOL OF PRACTICAL NURSING ANNUAL REPORT

The Faculty of the School of Practical Nursing, which includes one member of the Alumnae Association of Thomas Jefferson University's School of Nursing, is currently concerned with curriculum revision and general upgrading of the program. Through a recent decision of the State Board of Nurse Examiners, approval of the pilot program established in September, 1969 to permit students to attend on a work-study basis has been withdrawn. The seven students who completed this (21 month) program in June, 1971 were all successful on the first attempt to become licensed and three are currently employed at Jefferson.

The action of the Board of Nursing should permit more time to be available for the faculty to initiate necessary changes in the full time (12 month) program of studies to insure that our graduates will be fully qualified to assume the increased responsibilities involved in the care of patients. In addition the role of the school in preparing graduates with potential to climb the "career ladder" in nursing becomes increasingly important as these graduates seek acceptance into a number of accelerated programs designed to make them eligible for licensure as professional/registered nurses.

As our graduates move about this great country we are pleased to hear that the basic education they received at Jefferson has more than adequately prepared them to meet the many challenges encountered by licensed vocational/practical nurses in nursing today.

Elizabeth J. Sweeney,
Director



REPORT BY DR. SOENTGEN

The completion and dedication of the Helipad atop the Foerderer Pavilion on October 19, 1971, was one of the most noteworthy events to occur at Jefferson.

We are a regional center for the care of the premature and high risk newborn. At the present, in addition to our own Jefferson born infants, we serve as a referral center for 29 hospitals — servicing Pennsylvania, New Jersey and Delaware.

The helipad provides the means to transport problem newborns from greater distances when time is of the essence and distance is too far to benefit from a long ambulance drive over crowded highways.

The first infant to benefit from helicopter transport was a newborn with congenital heart disease; flown in from Delaware.

The State Police of Pennsylvania and Delaware have been approved for landing on the Helipad — thereby increasing the area Jefferson may serve.

Realizing that prompt care of the high risk newborn increases the survival rate, many Obstetricians are bringing their high risk obstetrical patients to Jefferson for delivery. Delivering the mother at Jefferson obviates the necessity to transport the sick infant. Care can be given immediately upon birth.

The plans for renovating and expansion of the Premature — Intensive Care Nursery have been given both Institutional and City approval.

Once again the Women's Board, who have already made possible all of the modern advancements in the nurseries, deserve a great big vote of thanks. Their newest project is to support the reconstruction of the Premature-Intensive Care Nursery. Hopefully this construction will start before the end of the year.

Requests for the training of nurses in the intensive care of the newborn are beginning to come in from outside institutions. These requests have been given to the proper Graduate Schools for discussion.

A vote of appreciation should be given to the many nurses and nursing personnel who work in all the newborn areas at Jefferson for their help, cooperation, and assistance in making Jefferson a successful regional center for the care of the newborn.

Mary Louise Soentgen, M.D., F.A.A.P.
 Director Newborn Nurseries
 Associate Professor Pediatrics
 Associate Professor Obstetrics
 and Gynecology



REPORTS OF PATIENT SERVICES DEPARTMENT, THOMAS JEFFERSON UNIVERSITY HOSPITAL

The Department of Patient Services had a challenging and exciting year as a patient related, public oriented customer problem solving service.

More and more patients want to turn to someone with their problems, concerns and needs and thus the department continues to grow. These contacts do reveal the age old concerns of patients and families such as fears concerning an impending operation, series of specific treatments, visiting privileges, dietary likes and dislikes, general housekeeping services, etc. More sophisticated knowledge of scientific expansions in the medical world, as well as more information concerning hospital costs and insurances, has lead to broader questioning on the part of the hospital user, thus making the role of Patient Service Representative a continued challenge.

It was heart-warming to the entire staff of Patient Services to be able to help so many patients and their families bear a little easier the burdens of their hospital stay.

This past year has brought to focus the Patient Representative working in a new health care field. This became so challenging a position those hospitals already working with the Patient Representative in a Staff Position that every effort was made to bring to the attention of the American Hospital Association the value and need to have the newly formed Patient Representative Organization recognized by them. The Director along with two persons from New York, one from Chicago and one from California, met with officials at A.H.A. in January 1972.

Out of this meeting was launched the Society of Patient Representatives of the American Hospital Association. This is the thirteenth organization to be affiliated with the A.H.A.

This society's goals are:

1. To act as a medium for the interchange of methods and ideas among members.
2. To keep both members and health care institutions informed about patient representative programs.
3. To provide educational programs and activities.
4. To strengthen and develop patient representative programs.

In June candidates will be selected for the society's national organization. The first annual convention will be held in Chicago, October 12-13, 1972.

Launching this organization during the past year has been a culmination of a dream that started in 1968 when the Patient Services Department came into being at our Thomas Jefferson University Hospital.

Work continues in the Department much in the same fashion as reported last year but the variety of problems and scale of workload has grown excessively.

Building the confidence of the doctors, nurses, social workers and any others who spend their working hours caring for the whole patient continues to be a prime objective. Improvement of the Patient-Escorting Service to and from the Nursing and Treatment/Study areas continues. Continued development took place in the Information Service Center with emphasis on "Patient Condition Reporting."

Condition reporting gives more than just the routine answer of "fair", "satisfactory". It gives the warmth that goes with patient interest and in knowing all there is to know in layman language about that patient.

The Patient Services Department will continue its service to the patient in order to make him happier in knowing "there is someone who cares."

Elizabeth Stone Miller, '36
 Director, Patient Services

REPORT OF STAFF NURSES' ASSOCIATION 1971-1972

The Association Rules and Regulations were revised. Nurse delegates were established, they represent the staff nurses from all areas of the Hospital.

A cocktail party is held every two to three weeks at Jefferson Hall, for all the staff nurses and their guests. The Christmas Party was held the second week in December at the Mask and Wig Club, it was a big success. The Annual Strawberry Festival, despite the poor weather, enjoyed a big crowd and was a financial success.

The Staff Nurses Association sent two nurses to a convention at Lancaster. The topic was "Emergency Medicine," the nurses attending were JoAnn Zepp, from Intensive Care Unit and Chris McNamee from 6th Medical.

Respectfully submitted,
 Dolores Hughes

PROGRESS REPORT OF HOSPITAL ACTIVITIES

Thomas Jefferson University with its component parts, continues to forge ahead with new plans while completing earlier planned projects. The last year saw the completion of two major construction projects in the Hospital.

In May 1971, the renovation of the term nurseries on the 10th Floor, Foerderer Pavilion was completed. The Admission nursery and two of the peripheral nurseries in addition to two patient rooms, were gutted to create the space needed for the new nursery. Three nurseries and a treatment room opening into a central nurses' station provide facilities offering excellent visual control of the babies and ready communication among the staff. The bright, cheerful decor, a new nurses' dressing room and convenient utility areas make this a pleasant unit for the staff and students to work.

This project was totally funded by our Women's Board.

The year 1971 also marked the completion of the helipad which is located on the roof of the Foerderer Pavilion. Initiated primarily because of an increase in the number of hospitals in outlying areas who wished to transfer high-risk babies to our Intensive Care Nursery, the helipad is also being used for the reception of other patients with emergency conditions.

During the last city-wide Disaster Program, one of the "victims" of the port explosion was brought to Jefferson's helipad and then was taken to our Emergency Room for treatment. Code "H", the helicopter alert, brings members of the Medical Staff, Administration, Maintenance, Inhalation Therapy, Nursing Service, and Security to the Fourteenth Floor to prepare the helipad and equipment for the arrival of the patient. The alert is coordinated through the Telephone Operator.

The construction of this helipad was approved by the City of Philadelphia, Department of Licenses and Inspections, and the Commonwealth of Pennsylvania Transportation Port, Bureau of Aviation. Our license permits only emergency use of the pad by pilots of Copter, Incorporated, Philadelphia Airport, or pilots tested and approved by Copter, Incorporated. All pilots of the Delaware State Police and nearly all of the Pennsylvania State Police have been approved to date, and have landed on Jefferson's helipad. Since this is the only hospital roof top helipad in the Delaware Valley, we anticipate an increase in its use in the immediate future.

This project was also underwritten by the Women's Board.

The Women's Board has agreed to support the renovation of the Intensive Care Nursery. Plans for this project have been approved by the City of Phila-

delphia Department of Health, and we hope to see the work begin in the near future.

The members of the Women's Board who raise the funds for so many of our projects, participate in many functions for this purpose. Among the most profitable of these are the Charity Ball of Philadelphia, the annual Old Market Fair, and the Pennywise Shop. The Pennywise Shop is Jefferson's Thrift Shop, and is totally operated by the Women's Board. From the beginning, the Shop was so successful that it soon outgrew its quarters. Last year, another larger building was obtained in Ardmore, resulting in an increase in business, the profits of which ultimately benefit the Hospital.

A nation-wide trend in a decrease of hospital in-patients has been observed also at Jefferson. Consequently, some patient units have been closed. All on the Fourth Floor Main Building are out of service and these units are now combined with those on Sixth Floor Main Building. With the closure of other units, Jefferson's bed capacity is now six hundred and seventy.

The Exchange Visitor Program for Graduate Nurses, initiated in 1961, has continued to progress. Both the nurses and the Hospital have profited with the extension of the program from one to two years. This change, after much effort on the part of the hospitals sponsoring the Exchange Visitor Program, was finally approved by the Pennsylvania State Board of Nurse Examiners.

During the past year, we have seen a marked increase in the number of cardiac surgical procedures. Cardiac surgery is now being used as a preventive measure as well as a corrective one. Consequently, the cardiac surgical suite is scheduled five days a week with two and sometimes, in emergencies, three patients a day. A second operating room is being prepared for these services, to facilitate the cardiac schedule.

Other projects being considered are a Burn-Trauma Unit or Center, an Intermediate Care Unit for the first transfer of patients from the Intensive Care or Cardiac Care Units, a Dialysis Home Training Program, and the renovation and refurbishing of the private rooms and the Eighth Floor, Thompson Building.

Plans for the new hospital, the Clinical Teaching Facility, are moving ahead. Many persons, in many Departments have been involved in the Planning Committees so that the completed project will be the consensus of the thinking of these who will be using this facility.

A general trend indicates that, as the in-patient census is reduced, more attention is centering on the care of the patient in the community. Jefferson also, has been involved in this trend, starting with the Children and Youth Program and the Community

Mental Health Program. More recently, Jefferson has become closely involved with the South Philadelphia Health Action which is a community-oriented organization to bring about a more cohesive system for the delivery of health care.

Many other activities, changes, and plans too numerous to mention in this report have been, and are taking place. Thomas Jefferson University Hospital has kept pace with the trends in health programs and practices. However, while keeping pace with on-going trends, in health care Jefferson continues to initiate and to put into effect her own plans, designs and vision, we may be justly proud of the contributions made to society in the past by this great institution, and we look forward to the years to come when these contributions will be realized to an even greater degree.

Thomas Jefferson University needs the support of all of us to continue its progress and we know that she can always rely upon that of our School of Nursing Alumnae Association.

We hope that you will give us an opportunity to review with you some of the changes in the Hospital which have been made over the past year and to acquaint you with the new facilities which have grown in the adjacent neighborhoods.

You are welcome to visit us at any time or to return as members of the employed "Jefferson Family."

Mabel C. Prevost
Assistant Hospital Director

SCHOLARSHIP COMMITTEE

The Clara Melville Scholarship Fund awards two \$500 scholarships annually. All other things being equal, the applicant who has been most active in the Association and who has most nearly completed the degree requirements is given preference.

Closing dates for applications are April 1 for those desiring to use the scholarship in the Fall or Winter semester, and September 1 for those desiring to use the scholarship in the Spring semester.

No applications were received for 1971-72. Members wishing to be considered for a scholarship award are encouraged to write for an application.

REPORT—CLERK-TYPIST

The Nurses' Alumnae Association now has a beautiful office on the mezzanine floor of Jefferson Hall, located on Locust Street between 10th and 11th. There are two very well furnished rooms, light and airy with picture windows, and the most convenient thing of all, we have plenty of work space. The office is large enough to have committee and board meetings.

Betty Piersol and Peg Cossman represented the Nurses' Alumnae Association at a meeting with Dr. Peter Herbut and Dr. John Goldschmidt. At this meeting Miss Cossman mentioned that we had been promised a larger Alumnae Room, and this promise had never been fulfilled. Through the interest shown in our Organization by Dr. Herbut and Dr. Goldschmidt, the office was made available to us within six weeks.

The Alumnae members appreciate having this suite of offices and are proud to be in Jefferson Hall.

The Alumnae Offices have received two gifts—two lovely plants from Betty Priscock, and an electric clock from Betty Piersol and Peggy Summers. All of which make working in the Offices very pleasant.

In writing to the Alumnae Association for information, or change of name or address; please give name at time of graduation and the year. This is important for accuracy of the files and insures that you will be on the correct mailing list. Please send a self addressed envelope when writing for information pertaining to the Alumnae.

Martha E. Riland



HEAD TABLE

Seated, left to right: Caroline Masuda, Secretary-Treasurer; Dr. Charlotte Voss, Director, Baccalaureate Program Nursing; Doris E. Bowman, Director Diploma Program; Mabel C. Prevost, Assistant Director Hospital; Dr. Peter A. Herbut, President Thomas Jefferson University; Margaret L. Summers, President, Alumnae Association. Standing, left to right: Mary A. Stauffer, 1st Vice President; Dolores Heckenberger, 2nd Vice President; Lenore Schwartz, Recording Secretary; Mamie Peace, Director, Operating Rooms; Janet Hindson, Social Chairman.

SOCIAL EVENTS FOR 1971-72

On December 6, 1971, the Alumnae held a Dinner in Jefferson Hall. There were 40 members and guests in attendance. Following the dinner, Santa Claus (Mary Ann Stauffer) paid a visit and presented a gift to each member and guest.

On March 14, 1972, the Alumnae held a Dinner and Auction Sale in Jefferson Hall with 35 members and guests present. The Auction Sale was a success and many thanks to our auctioneer, Miss Margaret Cossman. Proceeds from the sale were placed in the General Fund.

The main social event of the year for the Alumnae Association was the Annual Spring Luncheon held May 6, 1972 in the Crystal Ballroom at the Benjamin Franklin Hotel. There were 362 in attendance.

The Graduating Class of 1972 were guests of the Alumnae Association. There were 16 members present. A corsage was presented to Miss Hancy, President of the class.

Flowers were presented to the following Alumnae:

- Miss Mary Godfrey, Class of 1909
- Miss Elizabeth Heaton, Class of 1915
- Mrs. Henrietta Spruance, Class of 1921
- Mrs. Annie Craver, Class of 1921
- Mrs. Mabel Miller, 50th Anniversary

The flowers at the head table were given to Mrs. Violet Orland, Class of 1937, who was hospitalized on Alumnae Day.

The guests at the head table were:

- Dr. Peter Herbut, President of Thomas Jefferson University
- Miss Mabel Prevost, Assistant Director of the Hospital
- Miss Doris Bowman, Director of the School of Nursing
- Dr. Charlotte E. Voss, R.N. Ed.D. Chairman, Department of Baccalaureate Degree Nursing
- Mrs. Mamie Peace, Director of the Operating Room

The largest anniversary class present was the class of 1947 with 58 members in attendance. Tours were made of the Scott Library, Helipad, Alumnae Rooms, and the Nurses Residence.

I wish to thank the committee members and Alumnae for their assistance and continued support in helping with the social events.

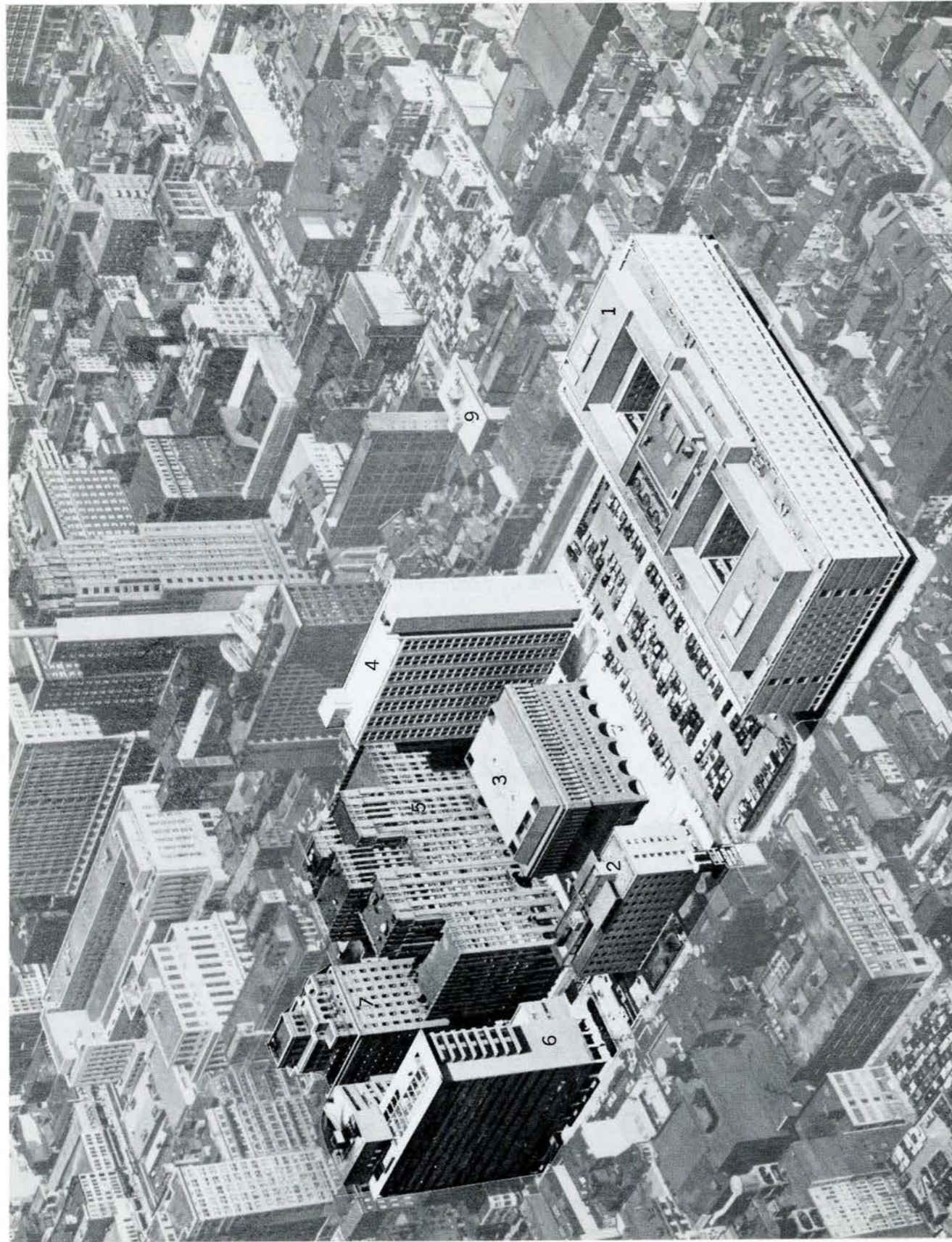
The Annual Luncheon for 1973 will be held May 5th at the Benjamin Franklin Hotel.

Janet Hindson, '50

MISSING ALUMNAE MEMBERS

Help us find the correct addresses for the following: The letters for the annual giving and luncheon invitations sent March 1972 were returned to the Alumnae Office — marked moved — no forwarding address.

- Emma Goucker Koontz '28
- Mary Scanlin Harrar '25
- Ellen Coulbourne Wise '32
- Eleanor Henry Porter '35
- Margaret Rakestraw Schmitt '35
- Inga Olafson Wheat '36
- Doris Wright Wolter '37
- Catherine Carfton Lambert '40
- Lucille Franch Cake '41
- Blanche Hill Wilson '39
- Betty Schultz Maier '44
- Shirley Snyder Bittner '49
- June Bareuther Graf '51
- Jean Mumper Seibert '51
- Anna Troxel Humphreys '51
- Janice Beck Pisano '52
- Madelyn DeLong Hanrathy '53
- Marcia Graham Bell '54
- Lois Haines McCuskey '54
- Carol A. Scott '60
- Jean Dutton Strong '60
- Georgia Noll '60
- Noreene Mostoller Schaffer '61
- Carol Becker Meister '62
- Linda Linner Neveling '62
- Carole Aufferman Ferree '62
- Jean Allen McConnell '63
- Dianne Keegan Murray '65
- Marianne Kopel '65
- Elizabeth Daily Husain '58
- Stella Whelan '59
- Mirian Mackes '59
- Rose Marie Sass '66
- Judith Allen Long '66
- Mary Oakley '66
- Patricia A. Milon '66
- Amelia Christie Lyons '67
- Phyllis Tooehen '67
- Alyce R. Munson '67
- Carol Senkowsky Casey '67
- Jane Park '67
- Sally Ann B. Gilbert '67
- Marcella A. O'Conner '68
- Virginia Bozarth '68
- Diana Troutman '69
- Karen Lee Lacy '70
- Constance R. Maycott '70



JEFFERSON TODAY

1. Jefferson Hall — 2. James R. Martin Student Nurses Residence — 3. Scott Library and Administration Building — 4. Orlowitz Residence Building — 5. Medical College and Curtis Clinic — 6. Foerderer Pavilion — 7. Thompson Building (Annex) — 8. Main Building (not visible) — 9. Stein Research Center

WAYS AND MEANS COMMITTEE REPORT

May 15, 1971 - May 15, 1972

The response to Annual Giving was excellent this year. The contributions to the Relief Fund, Clara Melville Scholarship Fund, General Fund and the Adele Lewis Student Scholarship Fund brought the total amount to \$5,228.00.

Thank you again for your continued support and generous giving at this time of this year.

All contributions received after May 15, 1972 will be acknowledged in the Bulletin for 1973.

Following is a list of contributions and contributors according to classes and the class totals.

Betty Piersol '34
Chairman

1909—\$15.00
Mary Godfrey

1914—\$30.00
Emma Knock
Effie Herring
Marguerite Barnett

1915—\$30.00
Elizabeth Heaton
Mattie Turner

1916—\$10.00
Lydia Cannon

1918—\$2.00
May Boyle

1919—\$5.00
Nora Dwyer

1920—\$30.00
Dorothy Fitzgerald
Anna Trego

1921—\$55.00
Frances Platt
Elizabeth Miller
Henrietta Spruance
Jennie Kutz
Ethyl Maull

1922—\$33.00
Hannah Buffington
Grace E. Miller
Claudia Wiedlund

1923—\$30.00
Marie Sanders
Clara Brunner
Clara Margaret Donaldson
Pearl C. Shappell

1924—\$35.00
Mary O'Connor
Estelle Taylor
Lillian Pratt
Josephine Lucas
Beatrice O'Hara

1925—\$68.00
Clara Luchsinger
Edith B. Ogden
Delilah Naugle
Marian Carey
Nora S. Fry
Marian Briggs
Mildred Okunishi

1926—\$55.00
Mary C. Bonenberger
Ruth S. Davis
Ernestine Rowe
Marjorie Workinger

Margaret Sokolowski
Josephine Dickerson
Mary C. Breth

1927—\$151.00
Anne Phillips
Lillian Mertz
Myrtle Clough
Pauline Gillen
Isabella Heverly
Lorraine Mayers
Clara Hardy
Martha Riland
Margaret Carey
Viola Hayes
Filomena Doherty

1928—\$60.00
Margaret M. Lauchle
Frances Currie
Laura Short
Beatrice N. Smith
Adalyne Starkey
Elizabeth Diamond
Dorothy Bennett

1929—\$130.00
Charlotte Burt
Ann Candler
Mabel C. Prevost
Phyllis Zeitler
Blanche Henderson
Zelda Mencer
Hazel Beach
Gladys Parsons
Mabel Nutter
Jane Ezell

1930—\$55.00
Ruth Heisey
Minerva Welch
Gertrude Evans
Virginia Avery
Mildred McGee
Ann Gambal
Emma Smeck
Elmina Hanges
Thelma Wolford

1931—\$145.00
Mildred Schoch
Laura Matthews
Blanche Ford
Elizabeth Gaul
Alyce Hammond
Madelyn Knapp
Sue Wells
Virginia Leo
Mary Bistline
Agnes M. Henry
Emma Bahner
Evelyn Arnold
Irene Jones

1932—\$205.00
Adeline Miller
Gladys Blue
Mildred Getz
Leonore Hammond
Gail Willard
Dorothea Watson
Mildred Breisacher
Thelma Morris
Theresa Wakeley
Betty Ent
Erma Painter
Alma Johnson
Evelyn Niece
Dora Reynolds
Mildred O'Connor
Rose Dodson
Sylvia Vlam
Ethel Taylor
Dorothy Williams
Katherine Wilson
Hazel Biddle
Sara Raymer
Emma Kelly
Lucille Harpel
Marie Maxwell
Mildred Jeffers
Virginia Fuller

1933—\$133.00
Leona Gehris
Sara Baxter
Vivian Murray
Kathryn Magin
Katherine Leach
Minnie Bartash
Anna Crofford
Dorothy Norris
Helen Kiraly
Pauline Kough
Florence Heist

1934—\$82.00
Evelyn Frazier
Julia McCracken
Kathleen Armitage
Anna Gehrke
Marie Lawton
Angela Cozza
Verna Diehm
Betty Piersol
Catherine Gair

1935—\$77.00
Ellen Teague
Arlene Walther
Pauline Thorp
Mary Moore
Evelyn Curran
Mary Evans
Frances Fisher
Priscilla Margerum

1936—\$135.00
Erma O'Donnell
Blanche Rushin

1936—\$135.00
Evelyn Dute
Louise Hafer
Mary Merendez
Margaret Ransom
Mary Dominick
Elinor Brosious
Margaret Semisch
Mary Wiley
Mildred Hawkesworth
Juanita Schettig
Lydia Yerkes
Marian Smith
Betty Stone

1937—\$155.00
Laura Johnson
Harriet Zeller
Mildred M. Smith
Alice Fulmer
Gertrude Sessions
Jean Arnold
Caroline Masuda
Pauline Leager
Margaret Taylor
Betty Mowday
Marion Wilson

1938—\$21.00
Lida Goodell
Elinor Wentzell
Marie TenEyck
Mary Copeland

1939—\$45.00
Dorothy Lepley
Charlotte Stacey
Olga Mitchell
Lorraine Phillips
Dorothy Ranck

1940—\$110.00
Hope Mood
Margaret Miller
Sara Westler
Alda Knodel
Norma Smith
Marion Tracey
Frances Wolicki
Helen Enterline
Mary Sue Banks

1941—\$105.00
Ruth Shaner
Frances Rumberger
Gene Jerabek
Alice Moore
Rhea Johns
Peggy Summers

Geraldine Waters
Marie DiMarco
Perma Davis
Kathryn Quackenbush

1942—\$317.00
Doris DeLong
Dorothy Burns
Ruth Tylden
Grace Dunkleberger
Virginia Spalding
Gladys White
Beatrice Snyder
Doris Schecter
Mary Jane Braid
Doris Bowman
Ruth Craven
Rose Nicastro
Madge R. Miller
Viola Brubaker
Myrtle Berman
Ellen Steward
Anne McCormick
Rhoda Weisz
Madaline Knight
Mildred DeKorte
Mary Wartenburg
Kathryn Beitel
Dorothy Cloud
Lois Kelly

1943—\$80.00
Betty McKim
Esther Kahn
Helen Reistle
Margaret Scull
Jean Kehm
Betty Shaw
Nellie Warshaw

1944—\$5.00
Rosie Jones

1945—\$170.00
Patricia Crawford
Florence Howanitz
Marjorie Wilson
Carole King
Irene Kessler
Catherine Betz
Mary Jane Troutman
Elaine Barrick
Christine Park
Helen Anderson
Elizabeth Snyder
Betty Braw
June Jacobs

1946—\$185.00
Betty Frommelt
Elaine Haines
Jeanne Supplee
Nelma Shaffer

1947—\$507.00
Margaret Cossman
Judith Hess
Betty McConnell
Arlean Miller
Dorothy Van Vrancken
Elizabeth Priscock
Julia Stout
Doris Moore
Hilda Lineweaver
Virginia Lawrence
Whanette Carosi
Carol Covert
Florence Mitchell
Ruth McCormick
H. Ann Boyer
Laura Tobia
Elaine Hampton
Irene Werner

Barbara Marks
Alberta Bouyer
Irma Heller
Eugenia Purcell
Mary Swan
Florence Checchia
Josephine Laird
Verna Andreas
Lois Custer
Mildred Ertwine
Muriel Rotherham
Doris Cavanaugh
Catherine Prendergast
Anna Olund
Elizabeth Cooper
Claire Boylan
LaDean Kramp
Betty P. Miller
Elizabeth Watkins
Sandy Schwab
Jane Guerin
Marie Baloga
Betty Mathers
Helen Corrigan

1948—\$56.00
Betty Daughenbaugh
Phyllis Courtney
Christina Blasius
Kathryn Eyrich
Rachel Herbert
Mercedes Christ
Betty McDonald
Dorothy Dickie
Jean Wigham

1949—\$30.00
Lucille Henkelmann
Hazel Kogler
Eleanor Robinson
Barbara Breen
Florence McAlpin

1950—\$98.00
Mary Brumbaugh
Helen Rightor
Twila Sanborn
Ellen Stahl
Lois Jernstrom
Rose Mulligan
Anne Breach
Janet Hindson
Joan Clauss
Jean Larkin
Shirley Hoffert

1951—\$75.00
Lorraine Jeitner
Joanne Verbinski
Louise S. O'Neill
Jane Aires
Dolores Gorham
Nancy Thompson
Jeanne Holzbaur
Jeanette Plasterer

1952—\$130.00
Eloise Hippensteel
Ann Nesbella
Jeanne Ryan
Ann S. Stout
Alice Chase
Margaret Keates
Catherine DeLucca
Albina Stackhouse
Jane Johnson
Mitzi Haerberlein
Nancy Lee Wilhelm
Jean Pachelbel
Phyllis Heim
Ann Andrews
Nina Hoehn

1953—\$235.00
Susann Carney
Claire Beisel
Cathleen Keating
Janet Meredith
Jane Lemmon
Emogene Oskin
Madelyn Hanratty

1954—\$90.00
Mary Lee Adams
Barbara Bachman
Margaret Riemer
Patricia Yurick
Sarah Wagner
Louise Hoch
Helen Besecker
Mary Ann Stauffer
Betty R. Stone
Rose Angelo

1955—\$70.00
Barbara Smith
Adrienne Rodgers
Mildred Kline
Naomi Wilson
Mary Pettinato
Nannette Smith
Dolores Heckenberger

1956—\$85.00
Florence Roche
Noreen Poole
Shirley Doernste
Norma Dawson
Jean Coughlin
Marlene Mika
Helen Hervada
Joyce Hagopian
Betty Miller

1957—\$75.00
Georgann Miller
Colleen Scussa
Carol Gray
June Dupnock
Mary Gallagher
Jeanne Abbott
Ruth Walsh

1958—\$70.00
Sylvia House
Doris Stephens
Louise Dunn
Annunciata Daneman
Barbara Kelso

1959—\$69.00
Elizabeth Ossman
Nancy Crawford
Joanne D'Alonzo
Joan Hirschkind
Judith Bloes
Carol Wenzel
Jane Hudson
Arlene Baumann
Carolyn Dales
Jacquelin Long

1960—\$63.00
Madeline Glass
Eunice Yakkel
Lorretta Dempsey
Joan Cupic
Barbara Umbenhauer
Judith Stauffer
Barbara Nevara
Sallie Callanen
Martina Mockaitis
Nancy W. Noe

1961—\$55.00
Emily Hogan

Loretta Cunninghame
Elaine Griffin
Marjorie Berrier
Robert Brown
Barbara Strong

1962—\$50.00
Sue Rice
Louise Fox
Patricia Goetz
Janice Billick
Arlene Hillig
Carolyn Bewsher
Carolee Mitchell
Terry F. Hohl

1963—\$82.00
Nancy Goodson
Margaret Turner
Theresa Cooke
Mary Louise McGinn
Dorothy Brown
Malinda Allen
Frances McGill
Ann Musitano
Lucille Scriber
Margaret Bethanis
Mary Gillen

1964—\$56.00
Judith Maloney
Patricia Gardner
Barbara Anderson
Eilee Disipio
Marilyn Long
Carol Teplick
Fay Butzbach
Kathleen Jones
Lynn Nagatani

1965—\$67.00
Judith Moyses
Janet Respass
Susan Smeltz
Adrienne Daughenbaugh
Carolyn Walchak
Barbara Schroeder
Dorothea Hamilton
Pauline Lupo
Elisabeth Zentner
Barbara Keller
Ellen May Whitehorne
Carolyn Bohn

1966—\$93.00
Christina Ford
Judith Tracey
Marion Goodwin
Jane McFalls
Lenora Schwartz
Susane Zamitis
Margaret Connell
Barbara Ruhl
Mary Lou Smith
Clare Karabasz
Karen Hughes
Bonnie Ann Crofford

1967—\$90.00
Rita Becchetti
Carol Woodruff
Joan Hampf
Cheryl Markle
Annette Bunting
Ellen Freeze
Jill Bower
Karen Neubeck
Linda Lauria
Karen Bedell

1968—\$62.00
Patricia Frank
Ruth Montgomery

Carol Leventhal
Shirley Poling
Eileen Fagnani
Bonnie Siegrist
Judith Backstrom
Halina Warmbrod
Sandra Kenton
Betty Jane Cahall

1969—\$107.00
Irene Harris
Melody Beatty
Alberta Davis
Dolores Hughes
Annie Kahn
Beth Jay Getz
Marilyn Bergner
Joan Munyon
Mary Hancock
Maria Longworth
Marianne Collins

Kay Jennings

1970—\$52.00
Cynthia Stroup
Kathleen Martin
Sandra Hall
Susan Lloyd
Janet Phillips
Maria Gratzik

1971—\$47.00
Peggy Furry
Lynn Streeper
Judith Jones
Beverly Hand
Kathryn Francis
Grace Spena
Joan Senderling
Carole Malek

In memory of:

Florence Hawke, class of 1927—\$25.00 to the Adele Lewis Student Scholarship Fund by her sister, May Hawke.

Alma Ross & Katherine Saunders, class of 1928—\$20.00 to the Relief Fund by Thomas D. Ross.

Clyde M. Spangler M.D.—\$10.00 to the Relief Fund by Ruth Smith Davis, class of 1926.

Doyle Heverly (husband of Isabel K. Heverly)—\$15.00 to the Relief Fund by Blanche Henderson, class of 1929.

CONSTITUTION AND BY-LAWS REPORT

During the past year the by-laws were completely re-edited with perhaps the most significant change being in the name of the Jefferson Nurses Alumnae Association. Our new name now being the Alumnae Association of the School of Nursing, College of Allied Health Sciences, Thomas Jefferson University.

In the fall of 1972 there are to be additional changes. One can look forward to seeing a review made of the present dues. There is to be an expected increase in the relief benefits.

Elizabeth S. Miller

SICK AND WELFARE COMMITTEE

This past year there were many Alumnae members hospitalized at Thomas Jefferson University Hospital. Cards were sent and visits made to all known members.

WOMEN'S BOARD REPORT

The Portrait of Miss Clara Melville, Supervisor of Nurses of Jefferson Hospital, from 1915 to 1937, was presented by the Alumnae Association to the Nurses' Home on May 4, 1935.

When the Lounge in the present Nurses' Residence was refurbished in 1971, it was thought fitting to have the Portrait removed from one of the classrooms in the School of Nursing to this room.

Due to many conditions this Portrait was in need of extensive repair.

The School of Nursing Committee of the Women's Board of Jefferson Medical College, took on the project which was restored by Newman Galleries for the sum of \$500.00.

The School of Nursing Committee considers it an honor to be able to contribute to the restoration of this historical work of art.

Charlotte Moore Burt '29
Chairman of the House Committee
of the School of Nursing

BACCALAUREATE DEGREE PROGRAM

The Department of Baccalaureate Degree Nursing, a Division of the College of Allied Health Sciences at Thomas Jefferson University will be admitting its first students in September, 1972. Applicants will be transfers from two- or four-year colleges having completed approximately 60 semester hours of arts and sciences courses.

Our program will include the junior and senior years leading to the Bachelor of Science Degree in Nursing. We expect about 35-50 men and women to enter this fall.

In order to prepare the students for responsibility in keeping with health care trends, the curriculum approach will cover nursing content and correlated experience not only in the care of the acutely and chronically ill, but in comparable emphasis on maintenance of health and prevention of illness. The role of the nurse as a colleague of other health professionals responsible for health care in the community will be stressed.

Students will have faculty-guided experience in hospitals, clinics and in other types of community health agencies to provide an opportunity to participate actively in the continuity of patients care and in general health care for individuals and families.

As the program develops, increasing opportunity for individualized learning and independent study will become an integral part of the curriculum. Students with varying backgrounds will thus be able to progress at their own pace.

The graduate should have the potential to be a self-directing, responsible practitioner and leader who will be able to have a continuing contribution toward the goals of the nursing profession and toward the improvement of health care.

Dr. Charlotte Voss



LUNCHEON
CLASS OF 1972



Margaret Summers, President
with "Youngest" Member Mary Godfrey, Class 1909



50 Years — Mabel Miller, Class 1922, and Margaret Summers, President.

**RESUME OF MINUTES OF
ALUMNAE ASSOCIATION MEETINGS**

September 14, 1971

17 members present.

Due to the vacancy created by the untimely death of the president, Mrs. Katherine Saunders, and in accordance with our By-Laws and Robert's Rule of Order, the First Vice President, Miss Florence Roche, took over the Presidency, and the Second Vice President, Miss Mary Ann Stauffer, took over the position of First Vice-President.

Miss Hindson reported that Mary Ellen McDonald and Rose Marie Drigan are in the hospital at this time.

The Alumnae Bulletin is ready for mailing, the new By-Laws will be sent with the Bulletin.

A donation has been received from Thomas D. Ross in memory of Alma Ross and Katherine Saunders.

Miss Bowman announced that Dr. Charlotte Voss has been named to head the Baccalaureate Program under the College of Allied Health Sciences.

Thank you notes were received from the following:

- Margaret Cossman—for remembrances during her illness
- A. Marcella Brown—for her invitation to the Annual luncheon
- Eileen Blum—for the Alumnae prize she received at graduation
- Elizabeth Lumen and the family of Mrs. Shallow—in appreciation for the donation to the Relief Fund in the memory of Mrs. Shallow
- Vaughn Garner—in appreciation for the donation to the Relief Fund in memory of his wife, Florence Cope Garner
- Family of Katherine Saunders—for all expressions of sympathy
- Blanche Henderson—for the luncheon flowers

Miss Bowman announced that there have been no applications for the Fall 1971 scholarship.

The 50-50 was won by Evelyn Frazier.

October 12, 1971

14 members present.

The 1972 ballot for the offices of President, Second Vice President and three members on the Board of Directors was presented and approved.

Miss Heckenberger reported that Mrs. Susane Zamitis was in the hospital and is the proud mother of a son.

Mrs. McCracken read a letter from Dr. Peter Herbut, President of the University, in the letter he was quite complimentary, citing the 1971 Bulletin as an excellent publication.

A donation by May Hawke in memory of Florence Hawke was reported by Miss Piersol.

It was voted on and approved to continue to send the Readers Digest to the following Alumnae members as a Christmas remembrance:

- | | |
|--------------|------------------|
| Emma Knock | Mary Godfrey |
| Sarah Bergey | Mabel Miller |
| Ethel Faust | Elizabeth Heaton |

It was voted on and approved to contribute \$150.00 to the United Fund.

The meeting was suspended while Dr. Culkin, Assistant Director of the Department of Pharmacy, presented a very interesting slide and lecture program about "abused drugs."

Thank you notes were received from the following:

- Miss Bowman—for the Thomas Shallow and Alumnae prizes awarded to the 1971 graduates
- Mrs. Smeck—for kindnesses during her hospitalization
- Mr. Ross—for the donation in his wife's memory to the Relief Fund

The 50-50 was won by Caroline Masuda.

November 9, 1971

16 members present.

Prior to the regular business meeting, Mrs. Mary Jane Troutman presented a paper on the history of nursing set in a perspective of current political events and emphasized the history of the Jefferson School of Nursing. The program was extremely interesting.

Miss Plasterer reported that Linda Hook was hospitalized.

The Annual Christmas party will be held in Jefferson Hall on December 4, 1971.

It was decided to send planters or candy again, to the following:

- | | |
|-----------------|---------------|
| Bernice Collins | Mary Albright |
| Annie Lynch | Viletta Emig |
| Nora Shoemaker | Rosa Diseroad |
| Jeanette Wolf | |

At Mr. Stanley Graham's request for nominees to represent the Alumnae on a Board of Trustees Committee on University Resources, the following names were submitted: Dolores Heckenberger, Betty Piersol and Betty Miller.

A letter of commendation about the Alumnae Bulletin from Betty Lou Simonson Woods was read.

The 50-50 was won by Martha Riland.

December 4, 1971

The Annual Christmas Party was held in Jefferson Hall and was enjoyed by all who attended.

January 11, 1972

25 members present.

The ballot box was officially closed at 7:15 P.M. Miss Stauffer expressed to Miss Bowman the gratitude of the Association for arranging to have student nurses count the ballots.

Miss Watkins reported that a meeting was held with the 63 members of the 1972 graduating class on December 9, 1971. Another meeting to encourage participation in the Association will be held during the spring.

A donation to the Relief Fund by Ruth Smith Davis, '26 in memory of Dr. Clyde Spangler was reported by Miss Piersol.

Thank you notes were read from the following:

- Ann C. Tiego—for her honorary life membership
- Rose Marie Drigan—for kindnesses during her hospitalization
- Mary Godfrey—for the Christmas Reader's Digest
- Elizabeth Heaton—for the Christmas Reader's Digest
- Rosa Diseroad—for the Christmas plant

An original poem, "Youth and Old Age Cannot Live Together," was sent by Rosa Diseroad and will be included in the next Bulletin.

Sister Rose M. Kershbaumer requested inactive membership in the Association for the time that she will be in Ghana, West Africa. A motion was made and accepted to transfer her membership to inactive status.

Mrs. Charlotte Moore Burt, '29 a member of the School of Nursing Committee of the Women's Board stated that the Women's Board is having the Clara Melville portrait restored by Newman Galleries. The painting will be hung in the newly redecorated Nurses' Residence Lounge.

Miss Betty Piersol has been selected by the University Board of Trustees Committee on Resources to represent the Alumnae on that committee.

At a meeting with Dr. Herbut, Dr. Goldschmidt and Mr. Unruh, Miss Piersol and Miss Cossman (representing the president Miss Roche) were told that the Alumnae Association could have office space on the Mezzanine of Jefferson Hall, rent free. An invitation was extended for all members to visit the suggested rooms after tonight's meeting.

A recommendation was made and accepted to give Mrs. Masuda permission to purchase an adding machine to be used by the Treasurer.

Election results:

- PresidentMargaret Summers
- Second Vice-PresidentDolores Heckenberger
- Board of DirectorsJanet Hindson
Evelyn Curran
Janice Osterhus

A motion was made and accepted to give the proceeds of the 50-50 to the student nurses in appreciation of their efforts in counting the ballots.

February 8, 1972

20 members present.

Before the regular business meeting the floor was given to Dr. John W. Goldschmidt, Dean of the College of Allied Health Sciences, representing Dr. Herbut, President of the University. He discussed the concept of the Jefferson family and the present and future impact the Alumnae Association can and should have on the affairs of the University.

Miss Hindson reported that the Annual Auction Sale and Dinner will be held on Tuesday, March 14.

A donation to the Relief Fund was made by Blanche Henderson in memory of Doyle Heverly, husband of Isabel Kevel Heverly.

The members present voted to accept President Herbut's offer of a suite of two rooms on the Mezzanine of Jefferson Hall to be used as Alumnae Office space. We also accepted the furnishings which were in the rooms.

A motion was made and accepted that Miss Dolores Heckenberger shall represent the Association at the ANA Convention in Detroit.

The 50-50 was won by Mary Ann Stauffer.

MARCH 14, 1972

Annual Auction Sale and Dinner in Jefferson Hall.

April 11, 1972

19 members present.

Miss Hindson reported that 35 persons attended the Auction and Dinner. She also stated that much interest is being displayed in this year's Annual Luncheon in May.

Kay May Silver is presently hospitalized.

Betty Piersol reported that the Resources Committee is trying to determine the direction of the future of the University over the next ten years and the means with which to achieve those goals. They are concentrating now on making the community better informed about Jefferson.

Thank you notes were received from the following:

Mary Ann Stauffer—for kindnesses during her illness

Jennie Kutz—for life membership in the Alumnae

Greencastle Presbyterian Church—for the donation in memory of Nora Shoemaker

Peg Summers then gave a delightful presentation of the slides taken on the trip she and Betty Piersol made to Nova Scotia in 1971.

The 50-50 was won by Margaret Cossman.

May 9, 1972

15 members present.

Miss Hindson reported that 362 persons attended the Annual Luncheon and that many favorable comments were received. The flowers from the head table were given to Violet Orland who was hospitalized.

Miss Piersol reported that the Resources Committee of the Board of Trustees was planning a series of luncheons to acquaint prominent Philadelphians with Jefferson's plans and accomplishments.

The following thank you notes were read:

Family of Nellie Crandall—for expressions of sympathy

Family of Jeanette Wolf—for expressions of sympathy

Upon recommendation from the Board of Directors, it was decided to not publish a new Blue Book at this time. (The Blue Book is a listing of all graduates by class and addresses).

Class address lists will be available from the Alumnae Office Clerk-Typist at a charge of \$2.00 per list. Enclose a long self-addressed, stamped envelope.

The Board of Directors also recommended that due to the increased operational costs the active alumnae dues be raised to \$10.00 yearly. This recommendation was voted on and accepted by the group present. This will be voted on at the annual meeting in January.

Miss Heckenberger then gave a very interesting report of the ANA convention in Detroit.

The 50-50 was won by Mary Ann Stauffer.

A motion was made and accepted that the President and her Board of Directors conduct any emergency business which may arise between May and September.

All the regular meetings of the Alumnae Association were held in the James R. Martin Student Residence. Coffee and tea were served during the meetings.

CLASS NEWS

1916—Lydia Ann Black Cannon, 208 Federal St., Milton, Del. 19968—Mrs. Cannon has purchased a Methodist Church and Social Hall building and has donated it to the Historical Society of Milton. It will be known as The Lydia Ann Black Cannon Historical Museum.

1920—Anna Campbell Trego, Maple Garden Apts. #3, Pottstown, Pa. 19464. I am retired for the past fifteen years. Thank you for making me an Honorary Member.

1923—Pearl C. Moser Shappell, 2144 Highland St., Allentown, Pa. 18104. Just taking life leisurely-winter in Florida or California, six months north, -cruised the Caribbean this past winter.

Clara Brunner, 8 East Broad St., Trumbauersville, Pa. 18970. Am spending much of my retirement in gardening and attending various organization meetings.

Mary Esther Bowser Benton, 202 N. Spring Garden Ave., DeLand, Florida 32720. I have been both Nursing Instructor and Director of Nurses, but am now retired.

1924—Blanche Schumayer McGuigan, 3 Maureen Court, Sicklerville, N.J. 08081. After years in Phila. we are moving to real country living at Winslow Crossing, Sicklerville, N.J. The air is so fresh—our Colonial Townhouse includes: grass cutting, snow removal, and outdoor painting—Ideal for retiring and best of all, only minutes away from the Jersey Sea shores.

1925—Elizabeth C. George Lewis, 21564 S. Military St., Dearborn, Mich. 48124. Husband deceased April, 1967.

Elizabeth Stewart Ewing, 202 Parkway, Elkton, Md. 21921. Widowed since 1953. No interesting information, just living and doing as I please.

1926—Ruth E. Smith Davis, RD 2 Box 270, Camden, Del. 19934. Still caring for my invalid blind sister after bringing her here from San Clemente, Calif., in October, '69. She is also a Jeff graduate of 1911, and was Chief Clinic Nurse 1911-1913.

Margaret M. Crowley Sokolowski, 140 Higby Rd., Utica, N.Y. 13501. Son, Dr. Joseph W. Sokolowski, Jr., Jeff, '62, has boards in Internal Medicine and Chest Diseases—is on staff at Jeff and Lourdes Hospital in Camden.

1927—Lillian Mertz, 65 Linden Ave., Haddonfield, N.J. 08033. Retired.

Viola Acheson Hayes, 73 Pine St., Oxford, Pa. 19363. I have a cardiac condition and am also a diabetic, so I am not very active. Have 3 lovely grandchildren.

Isabella R. Kevel Heverly, 250 S. 13th St., Phila., Pa. 19107. Husband deceased.

Frances Baker Crossan, #2 Box 16, Landenberg, Pa. 19350. My husband passed away suddenly on Feb. 9th, this year. I don't feel up to attending my 45th anniversary on May 6th.

Pauline McElwee Gillen, 247 N. Main St., New Hope, Pa. 18938. My biography was selected for the 7th Edition of Who's Who of American Women and speaks for itself of what I have been doing: Student, Art Student League, 1953-57, Brooklyn Museum, 1957-60. Exhibited in group show Norfolk Museum of Fine Arts 1968; N.J. recipient awards National Assoc. of Women Artists, 1959, 60, 67, 70. First award Phillips Mill Ann., New Hope, Pa. 1966, 69. Member Art Students League, Allied Artists of America, National Assn. of Women Artists.

1928—Adalyne Kinkead Starkey, 103 South Valley Rd., Paoli, Pa. 19301. Retired from Public School Nursing, June, 1971.

Frances Hess Currie, So. Locke Ave., Yeagertown, Pa. 17099. We both retired in 1968 and at present are enjoying life in suburbia.

Dorothy Smith Bennett, Rd. 2, Mifflintown, Pa. 17059. Widowed since 1968. Retired from nursing 1970.

Laura Carleton Short, West Oakwood Ave., Ocean View, Del. 19970. My grandson Mark, has been accepted at Franklin Marshall in Pre-med. Granddaughter, Marta, enrolled at Community College in Cumberland, Md. in Dental Hygiene course.

1929—Barbara Young Cornell, 1809 42nd Ave., Vero Beach, Florida 32960. Retired; enjoying the life of gardening and bridge, etc.

Gladys Elizabeth Higgins Parsons, RD #2, Box 305, Drums, Pa. 18222. Retired Jan. '69, after 40 years of nursing in several fields: Institutional, Private Nursing Home Admin. and Head Nurse, also Public Health and teaching with the Visiting Nurse Assoc. of Hazelton, Pa. I have one daughter, Betty Lou, a Jeff graduate of '48., and three grandchildren. Lu Ann graduated in '71 from Kutztown and is teaching Educational Art at Mont Alto, Pa. Peggy Jean is a 3rd year student at E. Stroudsburg and Alan is a High School Senior at West Hazleton, Pa.

Zelda R. Rowe Mencer, 910 So. 30th St., Camp Hill, Pa. 17011. Retired.

Hazel B. Besecker Beach, 3210 Overbrook N.W., Canton, Ohio 44709. Sorry I can't come to the luncheon, am just out of the hospital after an operation. My husband is retired and we travel quite a lot.

1930—Gertrude Geist Evans, 1808 Berlin Rd., Cherry Hill, N.J. 08003. I am promoting myself to retirement after thirty-one years of school nursing, in June, 1972.

Ruth Dorothy Frauenfelder Heisey, 700 E. Willow St., Elizabethtown, Pa. 17022. I am supervising at the Masonic Hospital here for the past 17 years. I also made In-Service Counselor, the past 3 years. I am sorry I will not be able to attend the Luncheon but will be with all of you in thought. Have a good time.

Thelma Pearl McArthur, 928 Church St., Indiana, Pa. 15701. Holding in '72. Nice to be remembered.

Muriel Stevens Canis, 98 Durland Ave., Elmira, N.Y. 14905. My husband and I are spending the month of May in Switzerland and Germany.

1931—Mildred S. Schock McGee, 205 Meadow Dr., Haddonfield, N.J. 08033. My husband Leonard died suddenly in May, 1971.

Elizabeth Youngblood Gaul, 2148 Cherry St., Phila., Pa. 19103. Still working for E.N.T. man.

Evelyn Reeser Arnold, 1301 So. Scott St., Arlington, Va. 22204. Husband has opened a new business—Walter M. Arnold Associates, Inc.

Blanche Ford, Rt. 1, Box 540, Sanibel Island, Fla. 33957. Still on the same case and enjoying the change from Director of Nurses to the private care of patients.

1932—Adeline Roth Miller, 6704 Glen Ave., Glenn Dale, Md. 20769. Please note change of address. NO! we have not moved but after many years now we have a street number and change of street name. Isn't progress wonderful?

Mary E. Herr Seibert, 309 W. Oak St., Palmyra, Pa. 17078. Both retired.

1933—Anna M. Woodring Crofford, 45 Sullivan Rd., Wayne, Pa. 19087. I was accepted as a "nominee" into the American College of Nursing Home Administrators in 1971, and as a full member in Jan., 1972. Attended the Convocation of A.C.N.H.A. & A.N.H.A. Convention for 10 days at Anaheim, Calif. Spent a day with Ruth Ohler Amos, '33, just great to see her. She is Supervisor of I.C.U., Cedars of Lebanon Hospital. I was one of the first group, on the first day, for the exam that was given to license N.H.A. in Pa. History in the making! Haven't heard the results as yet.

1934—Mildred Myers Smith, 31 Stanford Pl., Montclair, N.J. 07042. July 25th I leave for Japan for my 4th trip. I will be attending a Seminar on folkcraft, then I have been asked to teach conversational English to High School students and nurses.

1935—Blanche T. Rushin, 55(A) Locust Court Apts., New Rochelle, N.Y. 10801. Administrative Supervisor of Intensive, Coronary, and Progressive Care Units, New Rochelle Hospital.

Erma Louane McCullar O'Donnell, 11-8 Wilde Ave., Drexel Hill, Pa. 19026. Husband retired; two sons married; daughter engaged; six grandchildren. Still doing Private Duty part time. Like to hear from classmates.

Ruth McCabe Thomas, Riggin Ridge Rd., Ocean City, Md. 21842. Since the death of Dr. Thomas in '63, have been for the past five years doing Public Health Nursing in Worcester County Health Dept., Berlin, Md. Have one granddaughter Heather, daughter of Lynne, my youngest daughter and expecting a new grandchild in May who will be my oldest daughter, Natalie's, first child.

Pauline Latsha Tharp, 5498 So. Belmont Rd., Downers Grove, Illinois 60515. We have three grandchildren, ages six, one year, and four months. Husband, Floyd, retired as United Air Lines Area Operations Chief. We are part-time residents of Tennessee, mailing address: RFD # 2, Wolf River Dock, Albany, Kentucky 42602.

Ellen MacLean Crawford Teague, Oak Rd. via N.W. Ave., Phila., Pa. 19118. Have become "A Benjamin Franklin Fellow", member of the Royal Academy of Arts, London, England.

Mary Rotz Evans, 2505 Foulk Woods Rd., Wilmington, Del. 19810. My oldest son will graduate from Johns Hopkins University in May.

1936—Juanita Manier Schettig, 529 Keystone Ave., Cresson, Pa. 16630. Advisory Board of Mount Aloysius Junior College; Secretary of Admiral Peary Vocational Technical School Authority.

May Hyatt Dominick, 2826 Alpine Rd. N.E., Atlanta, Ga. 30305. My daughter, Robyn, graduated Wooster College, Ohio, in 1971—will enter Emory University in the fall for R.N. & B.S.

Lydia K. Yerkes, 2107 Winton Ave., Havertown, Pa. 19083. Coordinator of Nursing Services, Upper Darby School District.

1937—Laura Zukowski Johnson, 121 Union St., Mt. Holly, N.J. 08060. A granddaughter born to son Jim and his wife Irene—Ann Marie, at Lakenheath AFB, England.

Gertrude Nichols Sessions, 10210 Lorene Lane, San Antonio, Texas 78216. Only a couple of months before I complete 25 years with the Government!!

Charlotte Hardin Buxton, Reece Terrace Apts. #10-B, 102 Terrace Ct., Johnson City, Tenn. 37601. Husband died 12-30-70. Master at the Guntery School since 1937. Plan to return to nursing in Tennessee.

Rachel Dickinson Bingham, RD1, Bridgeton, N.J. 08302. I am not nursing at present but had been employed in nursing until a year and a half ago.

Alice Irene Leatherman, 323 North Oak Ave., Clifton Heights, Pa. 19018. I was a "stroke victim" a year ago. I can talk better and walk better in spite of the "prognosis negative"

1938—Elinor Miller Wentzell, 1502 Arrowhead Dr., Sun City Center, Fla. 33570. Nothing is new. We enjoy Florida living and are lucky enough to have our daughter and son living close by.

Mary K. Reeder Copeland, 3245 Walters Lane, Washington, D.C. 20028. My husband, Edward, has retired from the U.S. Air Force, having served 31 years active duty. Our daughter, Kathleen, a graduate of Penn State, is the mother of two delightful boys. Our son-in-law, Edward Connolly, will receive his Masters in Business Administration from Case Western Reserve this June. I do some Private duty nursing now and then. Best Regards to all. Enjoy the Annual Bulletin very much.

1939—Olga Dygan Mitchell, B1220 Park Drive Manor, Phila., Pa. 19144. Daughter, Susan, is married and teaching school in Pompano Beach, Fla.

1940—Mary Flyte Rosser, 69-60 108th St., Forrest Hills, N.Y. 11375. Our daughter's husband, Josue Harari, is Professor at Stanford University, Romance Language.

Norma Ziegler Smith, 1821 Glen Ridge Rd., Balt., Md. 21234. Daughter, Barbara Law, M.S.W., University of Md. in June, 1971. Have a granddaughter, Jessica, born in July, 1970. My son, Roger, will graduate from the U. of Alaska in May '72. He majored in Geology.

Mary Smith Stryker, 10 Masongate Dr., Rolling Hills Estates, Calif. 90274. My husband Dr. William S. Stryker, retired from the Navy (Capt. (M.C.) U.S.N.) He is now Medical Director, Los Angeles Orthopedic Hospital.

Margaret Foor Miller, 155 Mt. Vernon St., Dedham, Mass. 02026. Doing school nursing in the Dedham Schools. Became a grandmother in 1972.

Mary Banks Dale, 865 Orange Blossom Dr., Melbourne, Fla. 32935. Spent 15 yrs. with Dr. C.R. Crandall, M.D., as chief nurse, general practice. My daughter, Linda, is married to Capt. Peter Tkaco, and is teaching elementary education. Carolyn is married to Richard Hampton, Executive Secretary for D.B.A. Associates, here in Melbourne. I have three granddaughters—Tracie, Tina, and Tanya.

1941—W.H.—Marie Malinowski DiMarco, 1002 Cobbs St., Drexel Hill, Pa. 19026. This has been a great year for my son, Sal. In the National Press Photographers Assoc. his "Hospital Clown" took 2nd prize in Features. Then in the Pa. Press Photographers contest Sal received a 2nd in Features and a 3rd in Sports and was Runner-up for Photographer of the Year.

Gene Roush Jerabek, 914 McKinley Ct., Lockport, Ill. 60441. I have a wonderful husband and five healthy, happy children.

Geraldine Chamberlain Topping, 10225 Kensington Pkwy., Kensington, Md. 20795. I now have six grandchildren—What a Joy! I spend six months of the year traveling all over the states and islands with my husband. A most pleasant and educational experience.

Margaret Evans Koehler, 15 Old Park Lane, New Milford, Conn. 06776. I am now Director of Volunteer Services of the New Milford Hospital.

Margaret Elliott Walleit, 10746 Ave. H, Chicago, Ill. 60617. I have one daughter a High School Music teacher, one a Nurse, and a son who is also teaching in High School. My youngest daughter graduates in June. My husband passed away in May, 1971. I am still doing hospital nursing.

1942—Margaret Dickinson Indrika, R. #4 Oels Rd., Mtn. Home, Ark. 72653. We moved here last October. My husband is retired now, and I expect to work soon in a small hospital in the area.

Ellen McCurley Steward, 1841 Washington Blvd., Easton, Pa. 18042. My son, Robert, will graduate from Jefferson Medical College in June.

Myrtle Taylor Berman, 310 Colonial Ave., Moorestown, N.J. 08057. Our daughter, Anna Lee, graduated B.A. in International Studies from American University, Washington, D.C. in Dec., 1971. She was inducted into Phi Kappa Phi, National Honors Society. She is now doing Graduate Work. Our other daughter, Judy, will graduate 6th grade Moorestown Friends School this spring. Needless to say we are very proud of both.

Grace Jennings Dunkleberger, 201 Huston Ave., Stroudsburg, Pa. 18360. Same as last year—anticipating a trip to California. Bringing a "surprise" to our 30th!

Rose Pesci Nicastro, 3443 School House Lane, Phila., Pa. 19144. Our daughter Barbara, graduated from Georgetown University School of Foreign Service in Dec. 1970. She was married in Jan., '71. She will be entering Georgetown Law School in Sept., '72. Last year my husband was accepted into the Phila. College of Physicians.

Rhoda Burg Weisz, 3 Delaware Rim Dr., Yardley, Pa. 19067. The American Chemical Society's 1972 E.V. Murphee Award in Industrial and Engineering Chemistry was given to Paul B. Weisz in April, 1972 at the National Meeting in Boston.

Elsie Mae Moore Richardson, 507 Pollock St., New Bern, N.C. 28560. Our son, Ernie, will graduate from U.N.C. Law School in May.

Gladys Reed White, 301 So. 6th St., North Wales, Pa. 19454. Am still N.W. Boro Health Officer. My oldest, Mary Sue, will graduate and enter Wesley College.

1943—Jean Farrell Kehm, 107 S. Keeseey St., York, Pa. 17402. Our son, Robert, will begin Medical School at "Jeff" in September, 1972.

Helen Marie Thomas Reistle, RD #2, Box #104, Swedesboro, N.J. 08085. This is my 17th year as local school nurse and truant officer. I have four grandchildren. My son John, served six trips aboard the nuclear sub USS BN Francis Scott Key. He is now an instructor in navigation (electronic computers) at Dam Neck, Va.

1944—Rosie Mae Smith Jones, 1888 Delaware, Beaumont, Texas 77703. I am still doing Industrial nursing.

1945—Catherine Betz, 7416 Bath, Springfield, Va. 22150. About to be promoted to "Colonel" and will celebrate 20 years in the Army come July, '72. Still a great life—Thinking of retirement but not ready for it yet.

Marjorie J. Wilson, Colonel, ANC, has been assigned as Director of Nursing Activities, Walter Reed Medical Center, and Chief of the Dept. of Nursing. Her address: 9207 Three Oaks Dr., Silver Spring, Md. 20901.

Patricia Crawford, 12 Grande Paseo, San Rafael, Calif. 94903. USAF Nurse. Am now a Major and plan to retire in November, 1973.

Frances Knipe Gracey, 2107 Park Ave., Parkersburg, W. Va. 26101. Am Director of Nurses at Camden-Clark Memorial Hospital, President of the West Virginia Nurses Association, and a Member of the W. Va. Planning Commission for Nursing.

Christine Lindes Park, 30 King St., Cohasset, Mass. 02025. My husband is President of the Connecticut Bank and Trust Realty Corp. I have one son a

lawyer working International Law in Paris. Another, in the Peace Corps, and one still in high school. I have returned to hospital nursing and love it.

1946—Jeanne Supplee, 200 South Market St., Shamokin, Pa. 17872. LtC, Army Nurse Corps. Am stationed in Vietnam 18 July 1971 to 17 July 1972. Am Chief Nurse, 24th Evacuation Hospital on Long Binh Post.

Ruth Doris Fairweather Nemeth, 246 Bryn Mawr Ave., Lansdowne, Pa. 19050. I am Clinical Supervisor, 4-12, at Haverford State Hospital, Haverford, Pa.

E. Dorothy Gilardone Strachan, Box 351, Route #1, Fleetwood, Pa. 19522. In June, 1972 will graduate from Cedar Crest College, Allentown, with a B.S. in Nursing. Am presently employed by the Fleetwood Area School District as a School Nurse. My son, Douglas, will graduate from Muhlenberg in May. My daughter, Cathy, will be at Duke University in N.C. this September, majoring in the four year nursing program. She represented her school as their Jr. Miss. My son, Forrest, is commuting to Lehigh Community College, majoring in Business Management. My daughter, Betsy, completes elementary school this May. My husband, Jim, is a Realtor.

1947—Maude Reeves Sanders Schwab, 1401 South Flagler Dr., Apt. 112, West Palm Beach, Fla. 33401. Will be in Philly for our BIG "25" this May 6th. We're hoping for 100% (120) in attendance! See y'all soon!

Florence Bell Mitchell, 44 Delwood Rd., Cherry Hill, N.J. 08034. I am happily married to Bill, a former FBI agent, and am the mother of four children.

Hilda Crane Lineweaver, 1619 Clinton Ave., Chambersburg, Pa. 17201. Am Associate Professor at Shippensburg State College, listed in Who's Who in American Women and Who's Who in the East.

Joanne Hamm Koelle, 1726 Shelmire Ave., Phila., Pa. 19111. My daughter, Diane, graduated from Penn State University with a Degree in Nursing in Dec., '71. Sons, Fred and Kurt, in high school. My husband, Frank, is busy with his architectural business and I still devote 2 days a week to nursing at Rolling Hill Hospital.

1948—Mercedes Frances Breen Christ, 33 Louise Dr., Milltown, N.J. 08850. Our son, William, was graduated from Mercersburg Academy cum laude. He was also President of the graduating class. I have been employed as Clinic Director of all Planned Parenthood Clinics in Middlesex County, N.J.

Jean Shirey Wighamman, 5 Basehore Rd., Mechanicsburg, Pa. 17055. I am employed as Senior Claims Analyst with Pa. Blue Shield.

1949—Florence Servello McAlpin, 3036 Cartwright, Beaumont, Texas 77701. My son Bruce, is serving four years in the Navy, Submarine Section. He's 21.

Hazel Sheckler Kogler, 802 Rugby Rd., Phillipsburg, N.J. 08865. Our son, Paul, won the Scholar-Athlete Award in school this year. We were all so proud of him.

Lucille Flovell Henkelmann, 1434 Walker Ave. Baltimore, Md. 21239. My husband, Henry, was elected Vice President of Fidelity and Deposit Co. of Md.

Joanne Duffield O'Brien, 909 Brickell Rd., Huntsville, Ala. 35005. My husband, Richard, is a retired Army Major. My son, Ricky, will graduate high school this year and enter the University of Alabama in the fall. Suzanne is in the 9th grade. I am working part-time at Medical Center Hospital here in Huntsville.

1950—Mary Louise Moore Brunbaugh, 7337 Central Ave., Lemon Grove, Calif. 92045. My husband, Simon C., Jr., will be awarded a fellowship in Family Practice in New York, in September at the American Academy of Family Practice.

Joan Christman Clauss, RD #1, Olyphant, Pa. 18447. Our oldest son is finishing his 1st yr. at Yale and our oldest daughter, Pat, entering Clark Univ. in Worcester, Mass. in Sept., and the other nine (9) at home are keeping me hopping.

Twila Andersen Sanborn, 8111 Greenwood Ave., Tampa, Fla. 33604. Our son, Kenneth, was promoted to Petty Officer, 3rd Class in the U.S. Navy. At present he is stationed on an Aircraft Carrier in the Gulf of Tonkin, Vietnam.

1951—Joanne Shoemaker Verbinski, 1414 Old Mill Rd., Wyomissing, Pa. 19610. My husband, Ted, is still doing well on dialysis.

Barbara Edwards Beam, 350 Oakdale Pl., Springfield, Pa. 19064. Our oldest is a Biology major in college.

Jane Hawk Aires, 16653 Pineridge Dr., Granada Hills, Calif. 91344. Daughter, Vicki, has completed 1st yr. at U of C in San Barbara, and son, David, begins UCLA in September. All are well and happy.

Nancy Thompson, 220 Dennison St., Little Rock, Ark. 72205. I was promoted to Lt. Col. in the Air Force Reserves in July. I am currently working for V.A. in Hemodialysis Unit.

1952—Nancy Lee Greising Wilhelm, 993 Bellaire La., Rockledge, Fla. 32955. We are enjoying my husband's retirement from the Air Force and finally have a permanent home of our own. We can watch the Space Shots from Cape Kennedy from our front yard. Mark & Kurt are officers in DeMalay and Erik is busy with Scouts. I work at the local medical center and enjoy it. Best wishes to all my "Jeff" friends.

Ann Summers Nasbella, 518 Stewart St., Bellwood, Pa. 16617. In December '71, I accepted the position of Asst. Director of Nursing Service at Altoona Hosp.

1953—Susann Orr Carney, 510 Elknud La., Johnstown, Pa. 15905. My husband, Frank is practicing Urology here and we are kept quite busy with the activities of our five children, Frank, Dave, Molly, Billy and Judy.

1954—Betty Louise Richards Stone, 2019 S.E. 13th St., Ocala, Fla. 32670. We are kept quite busy with our three teenagers and two still in elementary school. I am currently president of the PTA and President-elect of the Medical Auxiliary.

Joan Sode Broshuis, Route 1, Box 181A, Rogers, Ark. 72756. We recently moved into our new home and I am President of the Rogers PTA Council.

1955—Adrienne Marasco Rodgers, 227 N. Lansdowne Ave., Lansdowne, Pa. 19050. My husband, Joseph F., is a M.D. at Jeff. We have 2 girls, ages 11 and 13, and 2 boys, ages 5 and 8.

1956—Margaret Caffrey Lehman, 245 Ridge St., Ashley, Pa. 18706. I am presently an Occupational Health Nurse for the Dept. of Health, Education & Welfare in Wilkes Barre, Pa.

Marlene Ambrose Mika, 118 S. White St., Shenandoah, Pa. 17976. Still living in Shenandoah and have 9 children now, 5 boys and 4 girls.

Marguerite Joyce Wyse Hagopian, 2142 Kimberwick Rd., Media, Pa. 19063. My husband, Ed, is in practice (general and thoracic surgical) in the Media-Chester area and also is on the thoracic surgical staff at the Wilmington Medical Center.

Noreen King Poole, 242 E. Kalmia Dr., Lake Park, Fla. 33403. I have been the Director of Inservice Education at Good Samaritan Hosp., West Palm Beach, Fla. since April of '70.

Norma Dawson, 230 River Rd., Gladwyn, Pa. 19035. Received M.S.N. from Univ. of Pa. in May of '72.

Jean Krasnisky Coughlin, 65 Sharon St., Providence, R. I. 02908. My husband, Dr. John Coughlin, and I participated on the Jefferson trip to Russia, Finland and Denmark. What a wonderful experience!

1957—June Reginak Dupnock, #2 Carmel Rd., Millville, N.J. 08332. I was very pleased when the Atlantic City Press newspaper honored me as a school nurse in a series called "Women at Work". An article with my picture appeared in March on this. I am also very proud of 2 of my 3 sons who belong to an excellent group called the Zoria Ukrainian dancers. They perform folk dances in Ukrainian costumes.

Georgann Jacobs Miller, 516 Centre Ave., Newtown, Pa. 18940. Our 4th child, a son finally!, named Christopher David was born November 19, 1971. I am now a Prepared Childbirth Instructor with CEA (Childbirth Education Association of Greater Phila.).

Carol Hyland Gray, 6601 Pleasants Dr., Charlotte, N.C. 28211. My husband, Marvin K., became a partner in the law firm of Carpenter, Golding, Crews and Meekius on 1 January 1972. We have two children, Ken, 14 yrs. old and Jane, 11 yrs. old.

Julia Fernandez Placendo, Box 71, Lake Rd., Newfield, N.J. 08344. I am back in college at Glassboro State for my B. A. in Health Education. My husband, John, is still farming. Our son, John, is in the Babe Ruth Baseball League and daughter, Carmen, age 12, came in 4th in the County Spelling Bee sponsored by the Bulletin for 12-16 yr. olds. Hello to all my classmates.

1958—Linda Doil Eppley, 98 Church St., Enosburg Falls, Vt. 05450. My husband was certified by American Board of Family Practice and will become a Fellow of A.A.F.P. in September '72.

1959—Joan J. Maiese Hirschkind, 3 Debbie Court, Setauket, N.Y. 11733. I have started back to college working toward my B.S. in Nursing and have been employed as a Nursing Supervisor at Smithtown Nursing Home, Smithtown, N.Y.

Judith Wright Bloes, 9 Old Mill Rd., Jermyn, Pa. 18433. My husband, Walter S., M. D., has made Chief of Staff of Mid-Valley Hosp., in Peckville, Pa.

Carolyn Wilson Dales, 1114 Churchville Rd., Southampton, Pa. 18966. I have been employed for the last 12½ yrs. at Holy Redeemer Hosp., and for the last 5 yrs. have been in Charge of Recovery Room.

Alice Bolig Gahan, 89 Glen Ridge Ave., Glen Ridge, N.J. 07028. I have been in charge of the Student Health Service at Newark College of Engineering in Newark since it was established in July of 1966. I was graduated from Jersey City State College with a B.A. in School Nursing and Health Education on June 6, 1971. I have two daughters, Kelly, age 11 and Elizabeth, age 9.

Jane A. Hudson, 8814 N. Three Chapt, Richmond, Va. 23229. No great changes to report. Work and life going well. I visited Jeff this Spring and became a bit sad seeing the closed wards.

1960—Nancy Washburn Noe, 1706 Arnold St., Laramie, Wyo. 82070. Married 3 yrs. to Dr. Lewis J. Noe, Asst. Prof. of Chemistry at Un. of Wyo. have one son, Christopher, 3 mos. old; work part-time at local hospital.

Eunice Brittan Yakkell, 2375 E. 290th St., Wickliff, Ohio 44092. Presently working 3 evenings a week in Richmond Hts. Coronary and intensive care unit. Enjoy it very much.

Dorothy Cale Van Derripe, 24101 Archwood St., Canoga Park, Calif. 91304. Has 3 children—Kenny, 8 yrs., Scott, 7 yrs., and Linda, 3 yrs. Husband, Bill, general manager Teledyne Business Communi-

cations Systems in L. A. Presently employed as part-time float nurse in Med-Surg at West Park Hosp. in Canoga Park.

Madeline Henly Glass, RD #1, Box 200A, Pine Bush, N.Y. 12566. Will be receiving B.S. in Education this summer from S.U.C., Oneonta, N.Y. Presently, I am a part-time Clinical Instructor in an Associate Degree Nursing Program.

Mary Evonne Farris Taylor, 1610 Sue St., Neptune, N.J. 07753. Returned to nursing this yr. On staff at Jersey Shore Medical Hospital.

Judith E. Haas Stauffer, 3729 Meyer La., Hatboro, Pa. 19040. Not working at present—just at home enjoying my boys Todd, age 6 and Tim, age 3.

Martina Mockaitis, 317 Iven Ave., St. Davids, Pa. 19087. Presently a Fellow in Rheumatology at Temple Un. Medical Center, Phila.

Sallie Lipan Callanen, 125 Casmar St., Vienna, Va. 22180. Early Oct. '71 found me in the Jacqueline Kennedy Rose Garden meeting Mrs. Nixon at a reception for Middle Atlantic Region of the National Council of State Garden Clubs. The reception followed a specially guided tour by the Secret Service agents of the White House. We found the First Lady to be charming—a real asset for the China Trip. May 19, 1971—our 3rd child, 1st son arrived. We named him Mark Liephan but refer to him as "Boy Wonder". May 19, 1971—My Dad, Arthur J. Lipan, had the good fortune of being admitted to the newly-opened Coronary Care Unit at Thomas Jefferson Un. Hospital with a diagnosis of dissecting aortic aneurysm. My "ungainly presence" at his bedside that night assured me that he was being very well cared for. I am profoundly grateful to Drs. Brest, Cameshan and Perucci for saving my dad's life, but am impressed and ever so thankful for the excellent nursing care he received in both CCU and ICU.

1961—Emily J. Lutz Hogan, 2925 Wacos Dr., San Antonio, Tex. 78238. Moved to San Antonio.

Elaine Marie Kunzman Griffin, 135 Ruth St., Feasterville, Pa. 19047. Baby girl born Feb. 9, 1972.

Barbara Jaszczalt Birney, 707 Windsor Pl., Wallingford, Pa. 19086. Had a baby boy in October '71. Working part time as Supervisor at Riddle Mem. Hosp. Attending Villanova for Masters in Education.

Clare Lynch, 618 N.W. 13th St., Apt. 32, Boca Raton, Fla. 33432. Worked with Drs. Clark and Soricelli at Crozer-Chester as their Dialysis Supervisor before moving South. Great here! Y'all come down!

1962—Patricia Ann Thomas Goetz, Box 4, Greencastle, Pa. 17225. Am off work since 1965 when my son was born. Helping on my husband's relatives farm—and being housewife and mother.

Marcie Grieshaber Moore, 22 Lexington Dr., Southern Farms, Shrewsbury, Pa. 17361. Moved to our new home in June 1971. Became a certified Astan Ski Instructor December 1970. Temporarily retired!

Teresa Fugueivedo Hohl, 7479 Glengrove Dr., Birmingham, Mich. 48010. My husband Joe (Jeff class of '63) is an Orthopedic Surgeon on the Staff at Henry Ford Hospital. We have four children—Joey, 6½, Jeff, 5½, Melissa, 3½ and Steven, 1½.

Janice Ann Panick Billick, 464 Youngwood Dr., E. Stroudsburg, Pa. 18301. 1971-72 lived in Stroudsburg where husband Bernard is practicing law with firm of Robinson & Hoffner. I am a housewife and mother of Christopher, age 1½. Active in community life but have hopes of returning to nursing when Chris gets older. We like Stroudsburg and the Poconos area. We took to skiing also this past winter.

Arlene Kania Hillig, 1006 Reading Blvd., Wyomissing, Pa. 19610.

Louise Baxter Fox, 615 Whitney St., Phila., Pa. 19116. New addition to family—Girl—born June 3, 1971—named Luanne.

F. Suzanne Rumberger Carter, 748 Naha Dr., Tarawa Terrace, N.C. 28543. Working two nights a wk. as relief Head Nurse in our local Intensive Care Unit. Plan to attend 10-year reunion in Sept.

Sue Lehman Rice, 5503 Bryn Mawr, Dallas, Tex. 75209. Plan to attend 10-year reunion in Sept.

Sandra McMinn Laudadio, 427 Marion Ave., Ambler, Pa. 19002. Husband, Jim, works for Rohm & Haas Chemical Co. Past President of Jaycees. One daughter, Amy, age 5 in kindergarten. Presently a housewife.

1963—Ann T. Camilli Musitano, 12736 Soule St., Poway, Calif. 92065. 1st child—son—born 28 Sept. 1971—named John R., Jr.

Margaret Anne Turner Cannon, 543 N. Main St. Ext., Meadville, Pa. 16335. Married Robert E. Cannon on May 6, 1972. Now working as Nurse Anesthetist at Meadville City Hosp.

Theresa Robson Cooke, 3525 Bartram Rd., Willow Grove, Pa. 19090. Third child, Kevin Joseph, was born Oct. 25, 1971.

Katherine Kingsley Kinsey, N. Church St., Moorestown, N.J. 08057. My husband, Dean, accepted at Thomas Jefferson Univ. for two-year G. I. fellowship beginning July 1972. I received B.S. degree from Millersville State College, August 1971. Currently employed by Mt. Laurel School District.

Mary Louise Keim McGinn, 20 Bishop Hollow Rd., Apt. H-12, Newtown Square, Pa. 19073. Was married March 18, 1972 to Howard McGinn. Currently employed at Childrens' Heart Hosp., Phila., Pa.

Sharon Bricker Sites, 734 Quince La., Secane, Pa. 19018. Expecting second child in May.

Malinda Jane Whipple Allen, 45221 Raysack Ave., Lancaster, Calif. 93534. No special recognition but am married to a high school science teacher; we're living on the Mojave Desert and have a son born January 13, 1972. Was working part-time 'til December 20, 1971.

Loretta Rich Kurland, 10 Dogwood La., Turnersville, N.J. 08012. My husband Bob has recently been elected President of the Washington Township Board of Education. We have 3 sons, Bobby, 5½, David, 4½ and Mark, 16 mos.

1964—Kathleen Langan Jones, 414 Bethany, Thousand Oaks, Calif. 91360. We're enjoying our new home in Thousand Oaks. Kim is now 5 and Heather is 3 yrs. old. We're expecting a new arrival in late May.

Lynn McMaster Nagatani, P.O. Box 811, Delano, Calif. 93215. I am still working part time as Charge Nurse. Completed a training course in Coronary Care Nursing recently. Daughter Seana is now a rowdy 4 year old; Kelly Elyse, age 2, is following closely in sister's footsteps. Ben and I are busy completing plans for our new home which, with luck, should be finished in the Fall.

Patricia Lee Gardner, 220 Locust St., Apt. 28H, Phila., Pa. 19106. Present position, Instructor of Rehabilitation Nursing at Thomas Jefferson University School of Nursing.

Barbara Nase Anderson, 1139 Tilghman St., Allentown, Pa. 18102. We are expecting a baby the end of May. My husband begins a 1-yr. residency in Hospital Administration this June at Fairfax Hospital in Virginia.

Linda Wang Pincus, 19 Northland La., Matawan, N.J. 07747. We have two wonderful sons, Allan, 4 and Kenneth, 1½. I am Chairman Teachers' Division of Monmouth-Ocean A.S.P.O. I am working part

time at a new hospital. My husband, Marty, is President of an Audio-Visual Production Company called Storyhouse. We are happy and busy.

Joanne L. Ronalds Miller, RD 1, Box 379, Saylorburg, Pa. 18353. First daughter, Kelly Ann, born 1 July 1971.

Carol Parzniewski Teplick, 9 Bryn Mawr Rd., Wellesley, Mass. 02181. We welcomed the birth of our first child, Jennifer Rebecca, on February 10, 1972. Steve is finishing residency at Boston City Hosp. and I have received my Master's Degree in Med-Surg from Boston College.

Judith Downing Maloney, 1004 Mitchell Ave., Morton, Pa. 19070. My husband, Don, is now a Sr. Field Engineer. We have 2 girls, Kelly Ann, 4½ yrs, and Carolyn, 3½ yrs, and one boy, Donald, Jr., 1 yr.

Fay Shaffer Butzbach, Moosehead Lodge, Greenville, Maine 04441. Bob, our daughter Deborah (age 2 in Nov) and I have purchased a resort on Moosehead Lake in Maine and are enjoying the outdoor life it offers. Would enjoy having visits from other Alumnae.

1965—Susan A. Wilhour Smeltz, 602-F Lake Dr., Douglassville, Pa. 19518. My husband, Jim was discharged from the Army last year and we are back in the Pottstown area.

Judith Jean Abbott Getz, 111 N. Pelham Rd., Vorhees, N.J. 08043. Keeping busy with family and hobbies, recent scuba diving trip with Don (Still resident at Jeff) and one 15 mo. old son, David.

Virginia Beyer Ives, 1809 Ridgeview Dr., Coatesville, Pa. 19320. I received a BS in Nursing from the Un. of Pa. in December 1971. Presently working with the Chester County Health Dept.

Dianna Scheingold Ketterer, RD #2, Kempton, Pa. 19529. Have one daughter, 4½ yrs. old and a son born October 30, 1971.

Janet Walker Respass, 2-3649A East Cliff Dr., Santa Cruz, Calif. 95060. Husband, Jim, will graduate this June with a B.A. in Biology from Univ. of Calif., Santa Cruz. I am a full-time student majoring in Biology at Cerrillo College and do part time book-keeping for a construction company.

Gail Wright Schutz, 321 Bellanca Rd., Bricktown, N.J. 08723. As of January 1, 1972, Chuck and I are in our own business, "Bricktown Electric", Electrical contracting. We added an addition to our family—Jennifer Anne, now 10 mos. old and Kristene is 4½ already. I'm still working part time in the O.R. at Jersey Shore Medical Center and busy also in church and community through the Junior Woman's Club. Love to hear from classmates.

Barbara Jean Ott Keller, 7322 Oak Manor Dr., Apt. 39, San Antonio, Tex. 78229. My husband completed his Neurosurgical residency at Jeff in July '70 and is now a Major, USAF in San Antonio for 2 yrs. Our 2nd child, Bridget Kelly, was born in March 1970.

Adrienne Lowe Daughenbaugh, 11 Forest Dr., Northfield, N.J. 08225. Our daughter, Lori, was 1 yr. old in March. Am presently inactive in nursing, but hope to return in the near future.

Elisabeth Ann (Betsy) Maule Zenter, 9745 S. Karlou St., Oak Lawn, Ill. 60453. Our first child, son Eric, was born December 9, 1971.

Carolyn Ruth Widman Bohn, 1240 Brennan Dr., Warminster, Pa. 18974. Our life has been enriched with the addition of a daughter, Caryn Marie, April 1971.

Jenny Jongenburger Adams, 1140 W. Farwell St., Chicago, Ill. 60626. First child, James Diederick, born May 20, 1971.

Judith Larson Moyse, 14 Edwards St., Apt. 1-D, Roslyn, N.Y. 11577. Bill and I are settled here on Long Island, at least temporarily. He's teaching Science and Oceanography to grades 4 through 7 and I'm working 4 days a wk. at a small hospital nearby.

Pauline Lupo, 2301 41st St., NW, Washington, D. C. 20007. Doing post graduate work; Head Nurse, Hemodialysis teaching Unit, Georgetown Univ. Hosp., Wash., D. C.

Dorothea Hamilton, 3229 Santa Cruz La., Alameda, Calif. 94501. I have been selected for the Navy's Program of full-time duty under instruction at the Univ. of Washington to study toward a B.S. in Nursing.

Ellen Elizabeth May Whitehorne, 1300 S. 9th St., TerreHaute, Ind. 47802. Joe is still in the Army—now teaching World Military History at Rose Hulman Institute of Technology. I'm working part time in the Emergency Room at St. Anthony's Hospital and love it. We have three children, Nell, age 5, Frances, age 3 and a son, B.J., age 1. It's a great life.

Barbara Davis Schraeder, 5523 Gettle Ave., Madison, Wis. 53818. In May 1972, I will graduate from the will receive my B.S. in December '72.

1966—Mary Ann Bealer Harvey, 105 Eliz. Blackwell St., Syracuse, N.Y. 13210. First child, John Lathrop II, born October 7, 1971. My husband received Ph.D. from Syracuse Univ. in May '72. I will be retiring from my Dormitory Director position this summer and we will be heading to Calif. in August. Tom has accepted a position at Claremont College.

Marion Carey Goodwin, 18 E. Ormond Ave., Cherry Hill, N.J. 08034. Second daughter, Deborah Lea, born Nov. '71. Took a trip to Mexico which we won on "Sale of the Century" TV Program.

Judith Kennett Tracy, PR #2, Box 30, Platteville, Wis. 53818. In May 1972, I will graduate from the Univ. of Wis. with my B.S. in General Science.

Judith Haffner Meinhart, 101 Mill Rd., Oreland, Pa. 19095. I am presently working for an oral surgeon in Abington; husband, Bob, and I recently build our first home.

Barbara Lynne Shermer Ruehl, 531 Linden Ave., Doylestown, Pa. 18901. Happy to announce the birth of Stephanie Elizabeth on Feb. 19, 1972.

Bonnie Ann Crofford, 45 Sullivan Rd., Wayne, Pa. 19087. Still 11-7 supervisor at Cathcart Home, Devon, Pa., Dept. of Presbyterian, Univ. of Penn Medical Center.

Karen Shearer Hughes, 818 N. Lois Ave., Newbury Park, Calif. 91320. We moved into our first home last August, acquired a cock-a-poo puppy and have settled into a suburban lifestyle.

Lenora Weiner Schwartz, Kennedy House, Apt. 2321, 1901 J. F. Kennedy Blvd., Phila., Pa. 19103. After the arrival of a bouncing baby boy, Gary, in June 1971, I became a full-time mother. My husband, Allen, is an Administrative Official with the Internal Revenue Service.

Martha Roe Russell, 315 S. School La., Lancaster, Pa. 17603. Our first child, Michael Clark, born July 28, 1971. Husband, Bob, is Estate Planner for National Central Bank in York. Will be moving to York, Pa. in late summer of '72.

Mona Kadushin Berch, 494 Mass. Ave., Apt. 2, Cambridge, Mass. 02139. I have set up a contraceptive information program at M.I.T.

Leslie Evelyn Rogers Wagner, 60 McGuffey Ave., Somerset, N.J. 08873. Now working private duty part time in an area servicing several hospitals, homes and nursing homes.

Christina Thompson Ford, CD#5 Tuckerton Rd., Medford, N.J. 08055. Husband, John has recently been nominated for the most outstanding Company Grade Officer in the N.J. National Guard. I am now Head Nurse on a Med/Surg Unit.

Susane Berkowitz Zmitis, 311 Market St., Camden, N.J. 08102. On Oct. 9, 1971, a 9 lb. 2¾ oz. son entered our world. His name is Robert Michael.

Joan Sampson Cupic, 4751 Motif Blvd., Lawton, Okl. 73501. My husband recently returned from Vietnam. He is completing his time in the service at Fort Sill, Okl. Our daughter, Sonya, is now 2 yrs. old.

Suzanne Barclay, 12495 Cedar Rd., Clev. Hts., Ohio 44106. Effective July 1, 1972, I have been promoted to Asst. Professor of Maternity Nursing at Case Western Reserve Univ.

Jane Murphy McFalls, 103 West Chester Pike, Havertown, Pa. 19083. I work as a Staff Nurse in the Accident Ward at Delaware County Hosp. in Upper Darby, Pa.

1967—Karen Lawer Bedell, 2036 Klamath Ave., #6, Santa Clara, Calif. 95051. John is working on his M.B.A. and I'm going to night school—working toward a degree.

Rita Haedel Becchetti, 42 Karen Dr., Maawaa, N.J. 07430. Husband Stan just made Senior Bond Trader at E.F. Hutton, N.Y.C. Our 2nd baby, a boy, J. Christian was born Nov. 20, 1971. Our daughter, Meridith, is now 2 yrs. old.

Karen Newbeck Brady, 180 Beach 117th St., Belle Harbor, N.Y. 11694. Resigned as Evening Supervisor, Columbus Hosp., N.Y.C., to marry Hugh T. Brady, June 10, 1972. Looking forward to being a housewife for a while.

Jill Simpson Bower, 1749 Westwood Rd., Reading, Pa. 19610. We have a son, John, born August 5, 1971, who's very active and lots of fun.

Carol Siegrist Woodruff, 4323-B Trenholm Rd., Columbia, S.C. 29206. After being a faculty member at Jefferson, I spent one yr. as a med-surg. Clinical Instructor at York Hosp. S of N in York, Pa. while my husband was an intern at York. We presently have a daughter, Leigh Anne, who was born in August 1971 and we are living in Columbia for 2 yrs. while my husband is serving as a Medical Officer at Fort Jackson, S.C. In July 1973, we plan to move to Pittsburgh, Pa., where my husband, Steve, will take a 3-yr. residency in OB-GYN.

Sheila Schwartz Rich, A-8 Chadwick Apts., Lindenwood, N.J. 08021. Birth of Sharon Iris on January 30, 1972—first child.

Dolores Oaster Lingo, 4376 Deerpath La., Phila., Pa. 19154. George and I have two daughters. I have returned to active nursing on a part-time basis at night. Would love to hear from fellow classmates.

Joan Heaton Hampf, 7891 Rio Silua, Apt. B, St. Louis, Mo. 63111. My husband, Fred, after completing a straight medical internship at Springfield Hosp. in Springfield, Mass. entered the Army and is now serving at the Armed Forces Examining and Entrance Station here in St. Louis.

Linda Valentine Russell, 6645 Algard St., Phila., Pa. 19149. Working 2 nights a wk. in OB at J. F. Kennedy Hosp. After 15 mos. in Europe, we are back in Phila. Just moved into a new home. Our son, William Jude, was born May 21, 1971, in Heidelberg, Germany.

Marcia Kurtz Favinger, 15 E. 4th St., Pottstown, Pa. 19464. I have 2 daughters, ages 16 mos. and 5 mos. Working private duty part time.

Rosemary Aubrey Gamborg, 621 Topsfield Rd., Hatboro, Pa. 19040. Presently Asst. Head Nurse, Cardiac Care Unit, Chestnut Hill Hosp. I have been invited to be a Teaching Asst. at the Advanced Cardio-Vascular Nursing Symposium sponsored by the American College of Cardiology at Nashville, Tenn. this fall. The conference is an annual three-day event.

Ellen Buechly Freeze, 9 E. Hastings Ave., Havertown, Pa. 19083. Our first child, a son, was born on March 7, 1972.

Annette Barbee Bunting, 657 S. Central Ave., Deptford, N.J. 08096. Completed 2 yrs. with my husband in the Navy at Gulfport, Miss. We have two children, Jennifer, 2 yrs. old and James, 4 mos. old.

Diane Jacobsin Perkins, 1466 Mt. Diablo Ave., Milpitas, Calif. 95035. We spent 6 mos. of 1971 in Okinawa and are back in Calif. In July we move to Monterey, Calif. where Tom enters the Navy Postgraduate School. Expecting our second child in October.

Cheryl Peters Markle, 431 Locust Grove Rd., York, Pa. 17402. Our first child, Julia Anissa was born on August 3, 1971.

1968—Betty Jane Masten Cahall, 308 Harrington Ave., Harrington, Del. 19952. Our daughter, Carol Elizabeth, will be 1 yr. old in May. We moved into a new home in April.

Patricia A. Moffitt Frank, RD 1, Waynesboro, Pa. 17268. Since my marriage in June of '71, I have been working part-time in Waynesboro Hosp.

Halina Piekarska Warmbrod, 809 Sylvia Dr., Homewood, Ala. 35209. We're expecting our second child in September. My husband is in his 2nd yr. Orthopedic residency at Univ. of Ala. Hosp.

Ruth E. Montgomery Penta, 1515 Locust St., Pittsburgh, Pa. 15219. Our first child, Jennifer Lauren, was born Nov. 28, 1971. My husband, John, is an Otolaryngology Resident. Planning to return to Emergency Room nursing soon.

Judith Lee McCullough Backstrom, 13097 Bustleton Ave., Phila., Pa. 19116. Married in November 1970. Stephen works for a Public Accounting firm in Phila., while I am working in the Delivery Room at Jeff.

Donna Buscher Libby, 118 Hemlock Dr., Friendly Village, RFD #3, Scarborough, Maine 04074. Presently a Head Nurse at Westbrook Community Hosp. Jim is continuing his studies at University of Maine.

Beth Korin Sherr, 5721 Gulfton #33, Houston, Tex. 77036. I am presently taking courses in counselling alcoholics and drug abusers. My husband is a senior at Bates College of Law and we are looking forward to his December graduation.

Sharon Elizabeth Paxton Treaster, 11902 E. Ohio Ave., Aurora, Colo. 80010. Married Eric B. Treaster April 15, 1972, a Data Processing Systems Engineer at Aerospace Data Facility in Denver, Colo. I am presently employed at St. Lukes Hosp., Denver, where I operate the Cardio-Pulmonary By-Pass.

Sandra Kay Payne Kenton, 22850A Hughes, Riverside, Cal. 92508. Our daughter, Adrienne Danielle, was born January 8, 1971. My husband is presently Chief of Neurology at March AFB and will be Chief of Neurology at Lankenau Hosp. in October 1972.

Linda Meachum Scheetz, 143 N. Union St., Lambertville, N.J. 08530. Daughter Kimberly Lynn born Oct. 2, 1971. Presently working in ICU/CCU at Mercer Hosp., Trenton, N.J.

Bonnie Inghram Siegrist, 4608 Carondelet St., New Orleans, La. 70115. Our son, Brett, was born Nov. 22, 1971.

1969—Joan Kuehner Munyon, 853B Brich Circle, Ft. Devens, Mass. 01433. Our first child, Mitchell Suzanne, was born Feb. 5, 1972.

Irene Harris, 602 Washington Sq., Phila., Pa. 19106. I was promoted to Head Nurse (Med/Surg Unit) in May of '72 at Albert Einstein Medical Center (Daroff Division).

Kay Kitchens Jennings, RD #1, Box 285B, Milton, Del. 19968. We now have a little boy, Robert, Jr., born July 8, 1971.

Dolores T. Hughes, 1525 E. Alcott St., Phila., Pa. 19149. I was promoted to Head Nurse of CCU at Jeff.

Marianne Gaspari Collins, 640 Taylor Ave., Linwood, Pa. 19061. Our son was born November 21, 1971.

Annie Eldredge Kahn, 2147 "O" St., N.W. #207, Washington, D. C. 20037. I married Joel R. Kahn of Silver Spring, Maryland, on Nov. 27, 1971. Joel is employed with the Internal Revenue Service. I am employed as a Staff Nurse at George Washington University.

Anne Smith Hennessey, 615 McAlpin Ave., 3A, Cincinnati, Ohio 45220. Our daughter, Lauren Kesting, was born May 22, 1971. Would you believe she weighed 9'9 1/2"! My husband, David H., graduated from Jefferson Medical College June 11, 1971 and is now interning at Good Samaritan Hosp., Cincinnati, in Pediatrics.

Marie Seebauer Panebianco, Coachman Manor Apt. P-15, Lindenwold, N. J. 08021. Received my BSN in May 1971; married husband, John, in July of '71. Am presently working as staff nurse in Rehabilitation Unit at Cooper Hosp.

Rose Marie Colleluori Malizia, 6412 Marsden St., Phila., Pa. 19135. My husband, John, received Pa. registration as a Pharmacist in January, 1971. Our son, John, Jr., was born May 30, 1970.

Beverly Jane Wallace, 905 Garden Rd., Zanesville, Ohio 43701. Presently Asst. Head Nurse in Orthopedics at Bethesda Hosp.

Rosalinda Menendez Heayn, 4642 "G" St., Phila., Pa. 19120. After 2 1/2 yrs. as Medical Asst. Head Nurse, at Einstein Medical Center, I am now Psychiatric Nurse at Friends Hosp.

Melody Beatty, P.O. Box 1424, Hershey Medical Center, Hershey, Pa. 17033. Working as a Staff Nurse in the Center's Operating Room.

Beth-Jay Greenfield Getz, 26 Township Line Rd., Elkins Park, Pa. 19117. Presently employed as Asst. Head Nurse in Pediatric Rehabilitation Unit, Moss Rehabilitation Hosp.

Aleta Sierer Beckerman, 104-4 Hampton Loop, Minot AFB, N.D. 58701. We returned after spending 2 yrs. in Thailand and now have a beautiful daughter.

1970—Maria Gratzik, 1821 Pacific Cst. Hghwy., Apt. 25, Hermosa Beach, Calif. 90254. Moved to Calif. in January and have been working as a Staff Nurse in the O.R. at Torrance Memorial Hosp.

Catherine Randazzo Schanz, 147 Ambler St., Westville, N.J. 08093. I married Douglas on June 5, 1971 and was recently promoted to Advanced Staff Nurse position.

Susan MacMilian Lloyd, 506 S. 42nd St., Phila., Pa. 19104. I plan to move to New Mexico in September and to go to the Univ. of New Mexico.

Sandra Clark Hall, 1107 "D" Charles View Way, Towson, Md. 21204. I am presently working as a Staff Nurse in the O.R. of the Greater Baltimore Medical Center, Towson.

Kathleen Ann Logan Martin, Apt. C-12, 491 Bethlehem Pike, Ft. Washington, Pa. 19034. Terry W. and I were Married January 29, 1972, honeymooned in the Virgin Islands, and I am presently a student at Ursinus College.

Janet Lynne Betz Phillips, 3417 Orion Rd., Phila., Pa. 19154. I am currently working in a doctor's office and am planning on going back to school in Sept.

Bonnie Schultz Pizzutillo, 1000 Walnut St., Phila., Pa. 19107. My husband, Peter, is a resident in Ortho. at Jeff and we have two children, Lara, 3 in May, and Peter, 2 in December.

1971—Pamela Jane Reitz Wolfe, 5342 Seaboard Ave., #15, Jacksonville, Fla. 32210. I am presently working in an intermediate CCU at St. Luke's Hospital in Jacksonville.

Carole Malek, 35 Gentry La., Willingboro, N.J. 08046. I am currently a Head Nurse on a Med/Surg floor at Rancocas Valley Hosp. in Willingboro.

Lynn Streeper, 2327 Haverford Rd., Apt. C, Ardmore, Pa. 19003. I am presently a Staff Nurse in a Med/Surg unit at Bryn Mawr Hosp.

Kathryn M. Francis Freeman, 1865 Welsh Rd., Phila., Pa. 19151. Married Jerry S. May 27, 1972. I am currently working as a Staff Nurse at Frankford Hosp. in Orthopedics.

YOUTH AND OLD AGE CANNOT LIVE TOGETHER by Rosa Diseroad — 1923

When I was twenty-one, oh! When I was twenty-one,
I never had much money but I had a lot of fun.
Now I am eighty, my shoes are black,
I walk to the corner and push myself back;
But I really don't care and I think with a grin,
What wonderful places my get up has been.
I get up each morning to sharpen my wits,
Pick up the paper and read the obits;
My name is not there,
I know I'm not dead,
So I eat a good breakfast and go back to bed!

MARRIAGES

- 1936 Elizabeth Stephan Stone married John Miller
1948 Sara Newkirk married Mr. Boyelatour
1957 Constance Sierant married John Vetter
1960 Nancy Lee Washburn married Mr. Noe
Alice Gahan married Mr. Rapp
Sandra Mathie married Mr. Manning
1963 Katherine Kingsley married M. Lean Kinsey
Mary Louise Keim married Howard McGinn
Mary Alice Mander married Mr. Serfoss
Margaret Turner married Mr. Cannon
1966 Catherine Shuck married Mr. Heller
Jean Lashinski married Mr. Strzelczyk

- 1967 Joan Carol Heaton married Fredrick Hampf, Jr., M.D.
Eleanor Hollister married Joseph Reinhardt
Karen Newback married Mr. Brady
1968 Patricia Moffett married Mr. Frank
Kathleen Lugowski married Thomas Welsh
Nancy L. Mohr married Mr. Sheetz
1969 Marie Armstrong married Robert Beckerman
Annie Eldredge married Joel R. Kahn
Jean Hillerstrom married Mr. Sloan
Marie Seebauer married Mr. Panebianco
1970 Catherine Ramdazzo married Douglas Schanz
Gail Johnson married Mr. Gallagher
1971 Loretta Suber married Mr. Heyduk

BIRTHS "HELLO WORLD"

- June Reginak Dupnock, 1957
Baby Boy
Nancy Washburn Noe, 1960
Baby Boy
Sallie Lipan Callanen, 1960
Baby Boy
Elaine Marie Griffin, 1961
Baby Girl
Barbara Jaszczalt Birney, 1961
Baby Boy
Louise Baxter Fox, 1962
Baby Girl
Ann Camilli Musitana, 1963
Baby Boy
Theresa Robson Cooke, 1963
Baby Boy
Malinda Jane Whipple Allen, 1963
Baby Boy
Joanne L. Ronalds Miller, 1964
Baby Girl
Carol Parzniewski Teplick, 1964
Baby Girl
Judith Downing Maloney, 1964
Baby Boy
Dianna Scheingold Ketterer, 1965
Baby Boy
Gail Wright Schutz, 1965
Baby Girl
Adrienne Lowe Daughenbaugh, 1965
Baby Girl
Elizabeth Ann Maule Zentner, 1965
Baby Boy
Carolyn Ruth Widman Bohn, 1965
Baby Girl
Jenny Jongenburger Adams, 1965
Baby Boy
Ellen Elizabeth May Whitehorne, 1965
Baby Boy
Mary Ann Bealer Harvey, 1966
Baby Boy
Marion Carey Goodwin, 1966
Baby Girl
Barbara Lynne Shermer Ruehl, 1966
Baby Girl
Lenora Weiner Schwartz, 1966
Baby Boy

- Martha Roe Russel, 1966
Baby Boy
Susane Berkowitz Zamitis, 1966
Baby Boy
Rita Haedel Becchetti, 1967
Baby Boy
Jill Simpson Bower, 1967
Baby Boy
Carol Siegrist Woodruff, 1967
Baby Girl
Sheila Schwartz Rich, 1967
Baby Girl
Linda Valentine Russel, 1967
Baby Boy
Marcia Kurtz Favinger, 1967
Baby Girl
Sharon Creamer Murphy, 1967
Baby Boy
Ellen Bueckly Freeze, 1967
Baby Boy
Annette Barbee Bunting, 1967
Baby Boy
Cheryl Peters Markle, 1967
Baby Girl
Betty Jane Masten Cahall, 1968
Baby Girl
Ruth Montgomery Penta, 1968
Baby Girl
Sandra Kay Payne Kenton, 1968
Baby Girl
Linda Meachum Scheetz, 1968
Baby Girl
Bonnie Inghram Siegrist, 1968
Baby Boy
Joan Kuehner Munyon, 1969
Baby Girl
Kay Kitchens Jennings, 1969
Baby Boy
Marianne Gaspari Collins, 1969
Baby Boy
Anne Smith Hennessey, 1969
Baby Girl
Rose Marie Colleluori Malizia, 1969
Baby Boy
Aleta Sierer Beckerman, 1969
Baby Girl

IN MEMORIAM

DEATHS

- 1908 Nora Shoemaker
1913 Mae Emmert Siebert
1915 Carrie Cassel Coffman
1917 Ada Young McNeal
1918 Anna Johnson Brumbaugh
1921 Effie Swarr Lehman
1921 Jeanette Wolfe
1921 Nellie Dienstal Crandall
1926 Isabel Fowler Diezel
1929 Helen Burkhalter Andrews
1931 Mary E. Kutz
1933 Julianna Nemshick Davoney
WH 1934 Pauline Minner
1935 Laura Burton McCabe
1944 Thelma Young Tojek
1953 Paully Jane Boerlin Krepa

BLUE BOOK

Upon recommendation from the Board of Directors, it was decided to not publish a new Blue Book at this time (The Blue Book is a listing of all graduates by class with addresses). Class address lists will be available from the Alumnae Office Clerk-Typist, at a charge of \$2.00 per list. Enclose a long self addressed, stamped envelope.

ALUMNAE BULLETIN

FOR THIS YEAR ONLY—a copy of the Bulletin is being sent to all Graduates, including Non-members. Hereafter, Non-members may obtain a copy only on request. The price of the Bulletin will be printed on a request card which is mailed to all Graduates each Spring. As in the past, all Alumnae members will continue to receive a copy of the Bulletin without extra cost.

MAIDEN NAME — YEAR OF GRADUATION

Whenever you have occasion to write to your Alumnae Association, PLEASE use your first name, maiden name, then married name and the year you graduated.

EXAMPLE: Janice Smith Green—1970

Mrs. John Green makes it very difficult for us to locate your card in our files. You are urged to notify the Secretary of the Alumnae Association of any corrections, marriages, deaths, and changes of address. Please help us keep errors at a minimum, and our files accurate.

CAP CHARMS

Available in sterling silver and 14 carat gold. For details write: Betty Piersol or Margaret Summers, 1002 Spruce Street, Philadelphia, Pa. 19107.

ALUMNAE DAY — FIRST SATURDAY IN MAY

CAPS

Jefferson caps may be purchased at C. D. Williams and Company, 246 S. 11th St., Philadelphia, Pa. 19107. Cost per cap is 90¢ plus postage. Identification may be obtained by directing correspondence to the Director, School of Nursing, Thomas Jefferson University, 11th and Walnut Streets, Philadelphia, Pa. 19107.

PINS

Jefferson pins may be purchased at J. E. Caldwell and Company, Chestnut and Juniper Streets, Philadelphia, Pa. 19107. Cost per pin is \$17.50 plus tax and postage. Identification may be obtained by directing correspondence to the Director, School of Nursing, Thomas Jefferson University, 11th and Walnut Streets, Philadelphia, Pa. 19107.

TRANSCRIPTS

All requests for transcripts should be submitted in writing to the Director, School of Nursing, Thomas Jefferson University, 11th and Walnut Streets, Philadelphia, Pa. 19107. Requests should be submitted at least a month prior to the date needed. There is a \$2.00 fee for each transcript. Checks should be made out payable to School of Nursing, Thomas Jefferson University.

