

1975

Alumnae Association Bulletin of the School of Nursing, 1975

Edwin L. Taylor

Doris E. Bowman

Charlotte E. Voss

Elizabeth J. Sweeney

Carol Hutelmyer

See next page for additional authors

Let us know how access to this document benefits you

Follow this and additional works at: http://jdc.jefferson.edu/nursing_alumni_bulletin Part of the [Nursing Commons](#)

Recommended Citation

Taylor, Edwin L.; Bowman, Doris E.; Voss, Charlotte E.; Sweeney, Elizabeth J.; Hutelmyer, Carol; Peace, Mamie Polite; Ranieri, Donna; Redfern, Nancy; Dougherty, Monica; Brucker, Paul C.; Blank, Deidre Watkins; O'Connor, Harriet K.; Hindson, Janet; Plasterer, Jeanette; Piersol, Betty; McCracken, Julia Tyler; Frazier, Evelyn Wilson; and Riland, Martha E., "Alumnae Association Bulletin of the School of Nursing, 1975" (1975). *Nursing Alumni Bulletins*. Paper 39.
http://jdc.jefferson.edu/nursing_alumni_bulletin/39

Authors

Edwin L. Taylor, Doris E. Bowman, Charlotte E. Voss, Elizabeth J. Sweeney, Carol Hutelmyer, Mamie Polite Peace, Donna Ranieri, Nancy Redfern, Monica Dougherty, Paul C. Brucker, Deidre Watkins Blank, Harriet K. O'Connor, Janet Hindson, Jeanette Plasterer, Betty Piersol, Julia Tyler McCracken, Evelyn Wilson Frazier, and Martha E. Riland

ALUMNAE ASSOCIATION BULLETIN
of the
SCHOOL OF NURSING

1891



1975

COLLEGE OF ALLIED HEALTH SCIENCES
THOMAS JEFFERSON UNIVERSITY
PHILADELPHIA, PA.

DUE TO THE BICENTENNIAL
1976 ALUMNAE LUNCHEON DATE
CHANGED TO
SECOND SATURDAY IN MAY
(MAY 8, 1976)

ALUMNAE ASSOCIATION BULLETIN
of the
SCHOOL OF NURSING
COLLEGE OF ALLIED HEALTH SCIENCES
THOMAS JEFFERSON UNIVERSITY

TABLE OF CONTENTS

	Page
PUBLICATION COMMITTEE	
Julia T. McCracken '34	
Evelyn W. Frazier '34	
Deidre W. Blank '67	
MAILING	
Martha Riland '27	
CREDITS	
Department of Public Relations	
Thomas Jefferson University	
PUBLISHED ANNUALLY BY	
Alumnae Association of the	
School of Nursing	
College of Allied Health Sciences	
Thomas Jefferson University	
11th & Walnut Streets	
Philadelphia, Pa. 19107	
Alumnae Calendar	2
The President's Message	3
Officers and Chairmen of Committees	4
Financial Report	4
Annual Reports	
"Progress" Thomas Jefferson University Hospital	5
School of Nursing	6
Department of Baccalaureate Nursing	6
School of Practical Nursing	6
Nursing Service Report	7
Operating Room Nursing	8
Alumnae Constitution and By-Law Changes	8
Student Programs	
Diploma	9
Baccalaureate	10
Poem entitled "A Nurse's Garden" Selected	10
Practical	11
Family Medicine — Paul C. Brucker, M.D.	11
Health Maintenance Program — I. L. Stoloff, M.D.	14
Poem entitled — "In Search of Nursing" by Deidre Watkins Blank, '67	13
Sesquicentennial Campaign	15
Demolition of Buildings on Chestnut St.	16
Bicentennial Exhibition	16
Committee Reports	
Scholarship	17
Social	17
Sick and Welfare	17
Membership	17
Resources	17
Bulletin	18
Administration	18
Life Members	19
Missing Alumnae	19
Resume of Alumnae Minutes	20
Annual Luncheon Pictures — Miss Elizabeth Heaton	21
Center Table	22
Ways and Means Committee Report	23
Class News	25
Names and Addresses of 1975 Diploma Graduates	33
In Retrospect — 50 Years Ago	
Graduation Exercises — Program May 14, 1925	36
"Class of 1925" — Then	37
"Class of 1925" — Now	38
Marriages	40
Births	40
In Memoriam	41
Notices	42

**ALUMNAE ASSOCIATION OF THE SCHOOL OF NURSING
COLLEGE OF ALLIED HEALTH SCIENCES
THOMAS JEFFERSON UNIVERSITY**

OFFICERS

President
MARGARET SUMMERS, '41

First Vice President
MABEL PREVOST, '29

Second Vice President
DOLORES HECKENBERGER, '55

Recording Secretary
BETTY PERSOL, '34

Secretary-Treasurer
CAROLINE H. MASUDA, '37

Board of Directors
DEIDRE W. BLANK, '67
DORIS BOWMAN, '42
PERMA E. DAVIS, '41
EVELYN DUTE, '36
JANET HINDSON, '50
FLORENCE ROCHE, '56
(ex-officio)

COMMITTEE CHAIRMEN

By-Laws
ELIZABETH S. MILLER, '36

Bulletin
JULIA T. McCRACKEN, '34

Nominating
ELOISE HIPPENSTEEL, '52

Membership
DEIDRE W. BLANK, '67

Program
DOLORES HECKENBERGER, '55

Scholarship
DORIS BOWMAN, '42

Social
JANET HINDSON, '50

Sick and Welfare
JEANETTE PLASTERER, '51

Sesquicentennial
HARRIET K. O'CONNOR, '39

Ways and Means — Resource
BETTY PERSOL, '34

**FINANCIAL REPORT
December 31, 1974**

Receipts:

Dues and Re-instatement of Members	\$ 7,823.50
Annual Luncheon Reservations	1,896.00
Interest on Savings Accounts	3,466.77
Miscellaneous	1,425.35
Annual Giving Contributions:	
General Fund	4,361.00
Relief Fund	386.00
Scholarship Fund	635.00
Total Receipts	\$19,993.62

Disbursements:

Annual Luncheon Expenses	2,412.15
*Printing, Mailing and Stationery	9,493.19
Sick Benefits for Members	506.50
Graduation Prizes	125.00
Contributions (United Fund, etc.)	375.00
Other Operating Expenses	3,889.98
Convention Expenses	800.00
Scholarships Granted	1,300.00
Gifts for Shut-Ins	267.45
Total Disbursements	\$19,169.27

*Bulletin Expenses for 1973 and 1974

Cash Balance as of December 31, 1974:

General Fund	
Checking Account	3,133.58
Savings Account	8,309.17
Relief Fund	20,598.48
Scholarship Fund	14,534.61
Total	\$46,575.84

"PROGRESS —

THOMAS JEFFERSON UNIVERSITY HOSPITAL"

Thomas Jefferson University Hospital continuously examines its programs and services to insure that each is delivered in the most efficient and effective manner, and consistent with the latest advances in technology. This past year was no exception. Our 664 bed hospital offered a variety of levels of patient care which ranged from primary through tertiary, and also a comprehensive scope of outpatient facilities and programs.

The primary goal of the Hospital is to render high quality health care while concurrently providing a setting that complements the University's education and research programs, all of which have a major impact on our capability to provide health services to the community. The health care field is constantly in a state of flux and it is incumbent upon hospitals to adjust in a positive fashion to change. Jefferson's programs reflect the positive attitude of the University.

The Curtis Clinic outpatient program is currently undergoing a major transformation. The final plans call for the relocation of all former clinic activities into the University's new Health Sciences Center, one city block to the east of the Hospital. This relocation will permit Jefferson to offer high quality, personalized, comprehensive outpatient health care services at the lowest possible cost. The broad-based ambulatory care center was planned to meet the comprehensive and preventive health care needs of the community we serve, to complement the educational function of the University, and, in appropriate instances, to provide a setting for clinical investigation.

The new Health Sciences Center will permit a focus on primary family medicine in the ambulatory setting, integrating laboratory, x-ray, pharmacy, and other ancillary services in order that patients may enjoy "one stop" medical care. Equally important is the fact that one level of care will be provided for all patients, regardless of the payment mechanism available to them.

A number of physical plant improvements in the Hospital were completed during recent months. Included among them were renovations to the 6th and 9th Thompson patient floors, the completion and dedication of the Radiation Therapy Center, the relocation of the Heart Station to completely remodeled modern and attractive facilities on 4th Main, and the addition of an ACTA Scanner to be used by the Radiology Department in computerized axial tomography. Each of these improvements took place while the planning for a new 400 bed Hospital (Clinical Teaching Facility) also proceeded at a rapid pace. During the past year, design drawings for the inpatient and outpatient areas were prepared as well as plans for a remodeled

Foerderer Pavilion. The plans for the Clinical Teaching Facility were also reviewed with groups both inside and outside of the Jefferson Family. More recently, demolition and a groundbreaking ceremony for the CTF have taken place.

Complementing these physical changes were the institution of a variety of new patient care programs. The Department of Rehabilitation Medicine has expanded its services to include an arthritis treatment program, rehabilitation for cardiac patients, and, in conjunction with the Departments of Neurosurgery and Orthopaedic Surgery, a spinal cord clinic. A rehabilitation workshop for graduate nurses was also conducted.

A Belzer Kidney Profusion Machine was acquired with a grant from the Foerderer Foundation, and expanded dialysis services are being planned.

Other services initiated include a federally supported Breast Diagnostic Center using thermography and mammography which should provide approximately 20,000 free examinations, and a new screening program for patients suspected of having emphysema.

Jefferson will continue to strive to be a leader in the health field by not only conforming to change, but also by seeking to initiate change in response to burgeoning technological and social demands. We invite you to return to see these exciting developments which have recently taken place in our Hospital.

Edwin L. Taylor,
Hospital Director



EDWIN L. TAYLOR

**SCHOOL OF NURSING
ANNUAL REPORT TO THE
ALUMNAE ASSOCIATION**

This time last year we had just breathed a sigh of relief ending our NLN accreditation visit. You will be pleased and proud to know that the school continues on the accredited list.

Last year three major changes took place within the school that reflect changing times and/or growth—

On July 1, 1975, the administrative responsibility for the Martin Student Residence building was transferred from the Director of the School of Nursing to the Director of Auxiliary Services of Thomas Jefferson University, Mr. Frank Dalla. Mr. Dalla has the responsibility for Orlowitz and all other housing facilities at the University as well as the Martin Building.

August marked the beginning of another new era—the School of Nursing moved its offices and classrooms into newly renovated facilities in the Health Sciences Center. This move offered updated office and classroom facilities, the major advantage being an increased number of offices and classrooms, better ventilation and lighting, and better communication within the school since more offices are together in the same building. We are still working on two major weaknesses in the new facility, one being too small a space for the classroom designated to hold the entire freshman class and the other being the lack of a lounge for students.

An organization change in September created two new positions: assistant director for administration and student affairs and assistant director for curriculum. This change permits delegation of responsibility for these areas and establishes new lines of communication with our thirty-seven faculty members, which to date seems to be most effective.

Currently we are engaged in curriculum revisions in relation to our courses in medical-surgical nursing in an effort to avoid repetition, and to develop content in a more meaningful manner under overall concepts of patient care. In addition to faculty, students are represented on our curriculum committee and have additional input into the program through clinical evaluations, course evaluations and senior interviews.

In recent years research in nursing has received much attention. In line with this we have about completed three rather extensive projects. The last to be completed is a five-year follow-up on our graduates. We are in the last year of the study. Results to date are gratifying and indicate that we must be doing something right because employers are still satisfied with our product.

The 82nd Commencement for the School of Nursing on June 21, 1975, with 85 students in the graduating class, will bring the total number of graduates to 4,572. As graduates, we hope that you continue to be interested in the progress of your school and that you will stop by to see us if you are in the area.

With many diploma programs phasing out or closing, you probably wonder about the status of our school. Current plans are to continue the diploma program for as long as we can attract qualified students. To date, this has not been a problem.

My best wishes to you for a happy, successful and healthy year ahead, I am,

Doris E. Bowman
Director
School of Nursing

DEPARTMENT OF BACCALAUREATE NURSING

A Continuing Education Conference for Registered Nurses was held on Friday, May 2, 1975. The theme for the day was "The Professional Nurse: Rights and Responsibilities." Dr. Clifford Jordan, President of the Pennsylvania Nurses' Association and Mrs. Miriam Lundgren, Board Member, Pennsylvania Nurses' Association spoke during the morning session. Faculty members in the baccalaureate nursing program and Thomas Jefferson University Hospital personnel participated in the afternoon session.

The Conference was very well received. We expect to schedule similar sessions more frequently after next year.

Charlotte E. Vass, Chairman
Department of
Baccalaureate Nursing

**ANNUAL REPORT OF THE
SCHOOL OF PRACTICAL NURSING**

The School of Practical Nursing has entered its second decade of existence after graduating its largest class of fifty-four women and three men on September 9, 1974. After the same period of time the school has also been removed from its quarters in the old Junto Building to the pleasant attractive and very adequate 10th floor of the Health Sciences Center. Student nurses from the School of Nursing and School of Practical Nursing have been sharing new classroom facilities on the 9th floor of the Center since last September which is certainly an improvement over the former areas available for instruction.

Increasing interest in vocational nursing education is quite evident from the large number of applications for admission to the school processed each year. Although the number of male applicants has been very small in the past there are indications that a substantial increase will be received and accepted this year. Female applicants have included a few daughters of School of Nursing alumnae who for personal reasons have chosen to be educated on this level rather than become part of a professional educational program in nursing. Classes are planned to provide instruction for between 60 and 70 students each September and it is anticipated that we will have no difficulty reaching our goal.

(Miss) Elizabeth J. Sweeney, R.N.
Director, School of Practical Nursing

**ANNUAL REPORT OF THE NURSING
SERVICE DEPARTMENT**

During the past year at Jefferson nursing has seen a period of much growth. Several decisions were made which will have long-range effects on the department.

In April 1974, we decided to phase out the Exchange Visitor Program and this was begun in October of 1974. At present we have only four Exchange Visitors remaining. This summer, when we employ the graduating classes, we will have a full complement of Registered Nurses. Because of the decision to phase out the Exchange Visitor Program, there were periods this year when staffing was a little bit tight. However, the staff nurses, head nurses and supervisors worked very well together to provide excellent patient care. We have received many letters of compliment concerning the type of care which we are giving at Jefferson.

In order to maintain a high quality of care, we implemented a Quality Assurance Program. The nurses involved with a specific type of illness are developing criteria by which they can measure the care they have given to their patients. An example of this is the criteria developed for the care of the patient with a total hip operation. In May, at the Annual Alumnae Day, the staff from the orthopedic unit presented their criteria and demonstrated the care which they give. We are very proud of the accomplishments of this group of people and of the others who have done criteria for measurement of care. It is our belief that it is only by continually evaluating what we are doing and determining the effectiveness of our actions that we will improve care.

Primary nursing has continued to develop at Jefferson. As with any new concept, there are various stages in its growth and development. One of the things we

find most difficult to teach is the idea that one nurse is responsible and accountable for the care of a group of patients from admission to discharge. Nurses really enjoy following the same patients from their admission to their discharge, but at times they find it difficult to accept the responsibility. Most of this is due to their youth and as they gain experience in caring for patients, they do seem to enjoy the responsibility.

The Cardiac Rehabilitation Program also continues. This year we received a grant from the United Fund to develop a teaching program for the patients in the Cardiac Rehab. This will begin in July of 1975. There will be one nurse responsible for interviewing patients to determine their needs for teaching, and for developing a teaching program which will meet those needs. Finally, she will interview them again eight to ten weeks post discharge to see if the teaching has been effective. We think this is a major step forward in patient care and we are very proud that Jefferson has received the opportunity to do this.

For the next year we plan to work on such areas as improving our discharge planning and doing some follow-up care, especially when patients will be coming back to the Health Sciences Center for their medical outpatient care. The move to Health Sciences Center from the outpatient area has also proved to be a very interesting one. Virginia Arcangelo, Clinical Supervisor in Medicine, at present goes over to the Health Sciences Center every Friday to teach diabetic classes for the patients who come there. We are also planning to do this in some of the other practice groups such as Pediatrics and Oncology. In this way we hope to provide more continuity of care between the inpatient and outpatient areas.

The Joint Commission visited Jefferson this year and in their accreditation of Nursing Service, had only one recommendation to make, and that was that we continue our retrospective audit and do a joint audit with the physician staff. It was most gratifying to us to know that these were the only areas in which they felt we needed to progress. They were very pleased with our documentation of care and our documentation of care planning. They felt that both patients and staff at Jefferson had "a very contented appearance."

All in all, I feel that much progress can be made at Jefferson and that we have many people who are very dedicated to patient care. It has been a very pleasant year, although a very hard one, for those of us who work at Jefferson, and we are very proud of our accomplishments.

Carol Hutelmyer
Director, Nursing Service

OPERATING ROOM NURSING

Our intensive orientating and rotating program has encouraged many nurses and graduating senior students to choose the operating room as their speciality.

During the first six to eight weeks the newest team member is under the direct supervision and guidance of the Clinical Specialist in charge of the staff development programs. The purpose during this period is not only to familiarize the nurse with the staff and general floor plan, but also to teach the basic methods of operation and to evaluate his or her technical capabilities.

One month rotation for each surgical service follows (exception — open heart — two months). Each service is supervised by a Unit Specialist for that particular area.

The final team placement is predicated upon capability, staffing needs and individual's selection.

Plans are now being formulated for an on-going pre and post operative visitation program. This type of patient involvement, we feel, should make for a more meaningful operating room experience.

Mamie Polite Peace, R.N.
Director Operating Room Nursing

CHANGES IN ALUMNAE CONSTITUTION AND BY LAWS

The following amendments were voted on and accepted at the Annual Alumnae Meeting on April 8, 1975.

Article I — Membership

(c) Life members shall be those who have been members of the Alumnae Association for forty (40) consecutive years. These members are exempt from the payment of dues, but shall enjoy all the privileges of active membership. Members eligible for Life Membership will be notified by the President.

Article VII — Relief Fund Benefits

Section 1 — Active and Life members are entitled up to five hundred dollars (\$500.00) annually toward their hospital bills and/or bills incurred due to an extended illness at home, greater than of thirty days duration and requiring services of a physician.

Associate members are entitled up to three hundred dollars (\$300.00) annually toward their hospital bills and/or bills incurred due to an extended illness at home, greater than of thirty days duration and requiring services of a physician.

Nursing homes will be given special consideration.

Section II — The said benefits are subject to the following rules and regulations:

1. Members are required to be in good standing with the Alumnae Association at the time of admission to a hospital, or an illness at home.

2. Any graduate must be a member of the Alumnae Association for one year before she is eligible to receive benefits.

3. Upon request to the Secretary-Treasurer a form will be submitted to the applicant member to be completed by the Medical Record Department to verify hospitalization. If at home the attending physician will complete the form.

4. Pregnancy and its complications are entirely excluded.

5. Cosmetic surgery entirely excluded.

6. Dental surgery and/or complications are entirely excluded.

7. If a member has not paid dues before April 1st she is not eligible for benefits from the Relief Fund.

8. Special cases due to adversities, must be referred to the President for investigation and subsequently to the Board of Directors for consideration.

Margaret Summers,
President

THE DIPLOMA NURSING PROGRAM

This has been a year of changes for the School of Nursing. In August, the administration offices in the Martin Building and instructor's offices and classrooms in the Curtis Clinic moved to the newly renovated offices and classrooms in the Health Sciences Center at 130 South 9th Street.

There has been some reorganization and additions to the curriculum. Operating Room Technique is now presented to the Junior students as part of surgical nursing. The Community Health Nursing course is being developed into an eleven week experience for the Senior year. This will include the emergency room, outpatient department plus an experience in geriatric nursing at the Lutheran Home in Germantown.

The Martin Residence is now under the supervision of the Director of Housing of the University. The director meets with a student elected Residence Hall Council periodically to develop residence rules and to discuss concerns of dormitory living. A few changes in rules have occurred this year; curfews have been extended, overnight female guests are permitted and open house is held monthly.

Since Student Council no longer had responsibility for enforcement of residence rules it underwent reorganization with its prime concern now being coordination of all school social activities. The name of the group was changed to Student Affairs Council.

The Council began the year in September by orienting the 112 incoming freshmen to the various activities available to them. The first Council social event, a Halloween Party, was held Thursday, October 30th, at Jefferson Alumni Hall. Many of the students attended and dressed appropriately for the theme, "A Fifties Night." Taped music of the fifties was provided by a disc jockey and refreshments were served; everyone seemed to have an enjoyable time. A Valentine's Day Party was held on February 13th.

Several Council projects helped to make holidays in the Pediatric Department a little more enjoyable. At Christmas new and used toys were collected and distributed in the department. The Council also sponsored an Easter Egg Decorating Party. Results of this party were fifteen beautifully decorated baskets which were greatly appreciated by the children.

Other functions of the Student Affairs Council included providing funds for the cheerleaders so they could make new uniforms for the squad, holding a stationery sale and planning an orientation booklet for the Freshmen entering in September 1975.

Fund raising activities continue to keep individual classes busy. An enthusiastic Freshman class has already started to build their bank account through sponsoring several candy sales. Junior events included a Valentine's Day Dance and a Continental Breakfast

in addition to candy and poster sales. The Senior class put forth their final effort in order to raise money for the purchase of their yearbook. Among some of their activities were sales of baked goods, white elephants, plants and popcorn. A very successful class project was the Senior Play. Written by a group of Seniors, it was a spoof of daytime T.V. shows. With some help from a local disc jockey and the many students who took an active part it was an evening of real fun. The Annual Senior Spaghetti Dinner was held at Jefferson Alumni Hall on April 9th. With this event the Seniors ended their fund raising as they reached their goal of three thousand dollars!

A most popular student activity still seems to be basketball. The team finished in third place this year in the Southeastern Pennsylvania League for Nursing, Student Nurse Basketball League. They also won their fourth consecutive exhibition game at the Spectrum. Donna Ranieri was this year's recipient of the Women's Board Award for Athletic Achievement.

Our cheerleaders are still quite active at all the games. Even though they did not bring home a trophy this year they were a valuable source of spirit not only to the team, but to the Student Body.

This year has seen a slight increase in student interest in SNAP. Junior student, Nancy Malloy, attended the SNAP Area No. 1 Convention, March 8th, at Philadelphia General Hospital. The National Student Nurses' Association Convention was held in Philadelphia from April 24 to 27th and Terry Mayne, Freshman, attended as the school SNAP representative. The convention theme was, "Rights with Responsibility."

A new group on campus, the University Forum, convened in November for the first time. It is composed of students from all of the schools of the university; there are four representatives from the diploma school. The Forum is concerned with matters, both social and academic, which affect all students of the university. The main objective of the group is to develop an atmosphere of a true university embodying ideals of free expression and exchange of ideas, education, research and social mixing.

While some things have continued as traditional activities at the school others have changed as the diploma program participates with other programs within the University.

Respectfully submitted,
Donna Ranieri
Student Affairs Council

THE BACCALAUREATE NURSING PROGRAM

The Baccalaureate Nursing program graduated its second class in June and awarded fifty-six students a Bachelor of Science in Nursing. This new program has experienced its share of growing pains and probably will keep on revamping certain aspects of the curriculum for some time to come. However, the basics such as core courses in nursing and several sciences (both social and natural) coupled with some fine team-teaching are there.

The emphasis in the Baccalaureate program seems often to be on "modern society." Do other nursing programs visit the CHOICE Abortion Counseling Agency or explore human sexuality by viewing films and discussing openly? The program deserves credit for making an effort to expose students to reality and previously taboo subjects.

The elective taken in the senior year is attractive to students who need to develop the confidence and expertise often sorely lacking in their chosen field. The fact that students spend no more than one hundred days (or parts of days) in the hospital or out-patient setting in two years sheds some light on the reason behind feelings of incompetence. But this is a deliberate and planned part of what being a baccalaureate-prepared nurse is all about. Those who thrive on three or more days on the floor per week (five in the summer) might want to investigate other programs available. Surprisingly enough to outsiders, many baccalaureate students do not mourn the loss of clinic time. They are here because the program appeals to them. A conservative estimate at best, 25% of the class of 1975 held weekends jobs in hospitals . . . in some cases more for the experience than the money.

The program, as any other, has its idiosyncrasies: some laughable and some not. Female students wearing navy polyester dresses with white collars (the standard uniform) have been mistaken for elevator operators and nuns in short habit. White shoes are not mandatory—a ghastly thought to some, and the wearing of pantsuits has been sanctioned for next year.

Not until the last quarter of the senior year did students in the class of 1975 spend eight-hour days in the hospital. Considering that a majority of students will work in hospitals soon after graduation, the invaluable experience of feeling part of the team and working a full shift was a bit delayed in some people's eyes. But again, the basic emphasis here is not on accumulating time on the floor. The Baccalaureate program has set its priorities; it is up to the student to set his or her own when deciding among A.D., R.N., or B.S.N. schools.

The instructors' backgrounds can only be advantageous to Jefferson's Baccalaureate students. Most of them are Diploma graduates who went back to school to get their Bachelor of Science in Nursing and later their Masters degrees. Needless to say, each has a special area of interest about which he or she is a fountain of information.

Although baccalaureate programs in general are not new, Jefferson has recently undertaken a big commitment to, as the pamphlet states, "prepare men and women to become effective professional nurses with the background necessary to be responsible, self-directed practitioners of nursing." With the high quality of integral components such as teachers and participating hospitals, it would seem that chances are good for the Baccalaureate program becoming successful.

Nancy Redfern

A NURSE'S GARDEN

1. First plant four rows of peas;
 - a. presence
 - b. preparedness
 - c. perseverance
 - d. promptness
2. Next plant three rows of squash;
 - a. squash gossip
 - b. squash criticism
 - c. squash indifference
3. Three rows of lettuce;
 - a. let us be faithful
 - b. let us obey rules and regulations
 - c. let us love one another
4. No garden is complete without turnips;
 - a. turn up for meetings
 - b. turn up with a smile
 - c. turn up with new ideas
 - d. turn up with determination to make everything count for something good and worthwhile
 - e. turn up on time

Selected

(Read at the Luncheon and published by request)

THE PRACTICAL NURSING PROGRAM

The practical nursing program at Jefferson, twelve months in length, includes various nursing disciplines. Accordingly, fundamentals are presented in body structure and function, pharmacology, nursing skills and techniques, nutrition with diet therapy practice, family living, emotional problems, community health and also communication skills. Along with these, general medical surgical nursing procedures are taught. Also, a topic of continued interest, maternal and child health nursing.

Through earnest attention to the course of studies the student will be prepared to provide for the physical and emotional comfort of the patient as well as his safety. She will also be knowledgeable in the reporting and recording of physical and mental conditions of her patients along with an awareness of signs and symptoms indicative of any undesirable change.

Contrary to what many believe, the academic instruction cannot be regarded lightly. Serious study is absolutely necessary to progress as quickly as the course demands.

The student practical nurse is able to carry out general bedside nursing care in a variety of hospital units both at Jefferson and an affiliate, Jeanes Hospital. Such units include: general medical-surgical, orthopedics, gynecology, maternity, nursery and pediatrics.

Along with routine tasks such as bed making, bathing, vital signs, and assisting with meals, the nurse has time to observe overt symptoms and emotional circumstances affecting the patients' progress.

She is also encouraged to assist the physician in routine examinations, and often observe and study the more technical diagnostic studies done. She is able to assist the team leader or registered nurse as investigator of situations, events and patients' response to therapy or treatment.

Because the hospital has three distinct schools of nursing, cooperation is learned early if efficient and harmonious operations are to continue. Much can be learned in a spirit of inter-dependence.

Time is allotted to the study of the patient care plan; therefore, problem solving becomes an essential component to patient progress. Not only the today of a patient is considered. Research into his past medical, psychological and social history becomes important as it has influenced his present state of health.

Utilized with benefit is the nursing kardex. Through this, continuity of care is clearly defined as each nurse may freely contribute.

Students, for the most part, feel that the clinical experience offered at Jefferson is equal to or surpassing courses provided by other similar schools.

The role of student demands study, investigation, listening, questioning and reasoning. The role of nurse compounds these with qualities of understanding, compassion, and practice of theory in precise action and maturity.

Whatever her given title today and tomorrow, there will invariably be need of a dedicated bedside nurse. With the attainment of further knowledge and experience will come greater competency in care.

Monica Dougherty

FAMILY MEDICINE AT JEFFERSON

Family Practice became a recognized specialty in 1969. With specialty status, Family Practice has become an attractive alternative for medical school graduates, but a more demanding one as well. For example, a three-year graduate residency program and recertification every six years are required of Family Practice specialists. This year, twenty percent of American medical school graduates will enter Family Practice residency programs.

Jefferson started its Family Practice program by establishing a Division of Family Medicine in 1971. Dr. Willard Krehl, Professor and Chairman of the Department of Community Health and Preventive Medicine, along with enthusiastic representatives from the Pennsylvania Academy of Family Physicians, organized the new Division by enrolling approximately twenty-five Board-certified family physicians who helped to establish an undergraduate curriculum in Family Medicine.

In January 1973, Dr. Paul C. Brucker, a faculty member in the Division of Family Medicine, was appointed to chair a new, separate Department of Family Medicine in the Medical College. The new Department has been responsible for developing programs in the undergraduate, graduate, and post-graduate areas.

Undergraduate Programs

With the development of the new Medical College curriculum in the Spring of 1974, the Department of Family Medicine, working with the Departments of Psychiatry and Human Behavior, Community Health and Preventive Medicine, Physical Medicine, Pediatrics, and the Office of Medical Education helped to design

the new "Medicine and Society" course offered weekly to freshmen and sophomores. In addition to helping plan the course that pays attention to such subjects as epidemiology, growth and development, human sexuality, ethics, medical jurisprudence, and psychopathology, members of the Family Medicine faculty helped to teach the course through both lectures and seminar discussions. In the Fall of 1974, the first mandatory six-week clerkship in Family Medicine was started. Every six weeks, approximately twenty-seven students were assigned to primarily an out-patient activity where they participated in the ambulatory care of patients and their families. Students were assigned to programs in Family Medicine at Jefferson and three of its affiliates—i.e., Wilmington Medical Center, Latrobe Area Hospital, and Chestnut Hill Hospital. In addition, some of the students were assigned to preceptorships with Family Medicine faculty members in Delaware, New Jersey, and Pennsylvania.

Beginning in September 1975, approximately forty senior students have elected to spend their senior year in a track in Family Medicine. During this year, the students will participate in twelve weeks of ambulatory care, where he or she will see unscreened and ill-defined problems involving any system of the body in a selected population. The students will learn to recognize problems and to initiate procedures for solving them. They will perform simple, but important laboratory studies, prescribe therapy under the supervision of a faculty member and counsel the patient and his family regarding illness and its long term significance. The second major section of the track will provide specialty contact both in- and out-patient wise. The student will have the opportunity to elect in-patient experience in Internal Medicine, Pediatrics, Obstetrics-Gynecology, or Psychiatry and Human Behavior. He or she will also have the chance to elect exposure to Emergency Medicine, Rehabilitation and Physical Medicine, Community Health, Ophthalmology, Otolaryngology, Diagnostic Radiology, Orthopedics, and Genetics and Counselling. Each student will be required to elect a six-week basic science experience in the fields of Anatomy, Biochemistry, Physiology, Pathology, Microbiology, or Pharmacology.

Residency Program

In December 1973, Jefferson was approved by the AMA Council on Graduate Education to start a three-year Family Practice residency training program. The first class of six residents started their training in July 1974.

The residency program hopes to train residents to serve as the physician of first contact who provides for the patient a means of entering into the health care system. It is estimated that a properly trained family physician can provide care for approximately

eighty percent of the patient's total health needs. In addition, he or she should recognize when it is necessary to refer the patient to appropriate sources of care while still preserving the continuity of care. Accepting the responsibility for the patient's comprehensive and continuous health care within the context of his environment including the community, the family and comparable social units, the family physician also will act a leader or coordinator of the team that provides the health services.

Upon completion of the three-year residency program, the resident will be expected to pass the Board examination for certification in Family Practice. It is hoped that the resident will then enter the field of Family Practice in one of the many areas where they are so desperately needed. In all cases, the resident's training is individualized in order to help the resident establish his or her own educational and professional goals, particularly with respect to the medical needs of the community in which he or she plans to practice. Jefferson's program encourages the concept of group practice.

Philosophically, the Department attempts to instill the desire in the learner to continue his or her medical education programs, by extension of and reinforcement of necessary professional skills, by participation in medical audit and by involvement in teaching health staff, preceptee students, and peers. It is anticipated the resident will feel comfortable and enjoy delivering quality, comprehensive care.

Family Practice Facilities

The primary training facilities for the residency program are on the Thomas Jefferson University campus. These include the Hospital and the Model Family Practice Unit, consisting of approximately 8,000 square feet, which is located in the newly renovated Thomas Jefferson University Health Science Building, a twenty-two-story building designed for ambulatory care. The Model Family Practice Unit's facilities include adult and children's waiting rooms, record room, insurance and clerical section, nurses' stations, laboratory, special procedures room for sigmoidoscopy, a paramedical work-up room for vision testing, hearing testing, tonometry, etc., doctors' offices, examining rooms, interviewing room, conference room, and an observation room with one-way mirror and close-circuit television equipment.

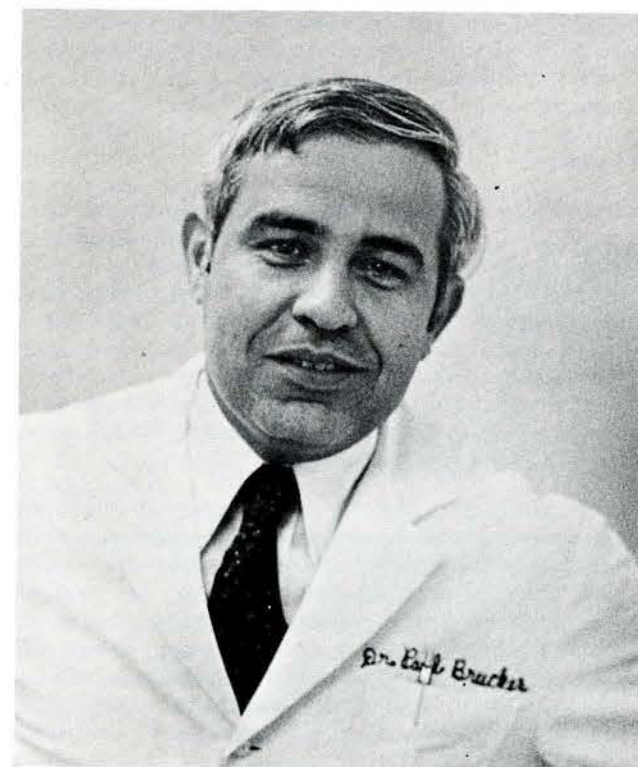
Jefferson is also affiliated with four additional approved residency programs which are located at Wilmington Medical Center, Bryn Mawr Hospital, Chestnut Hill Hospital, and the Latrobe Area Hospital. Approximately twenty-two residents are enrolled in the first-year class of these programs. This means that by July 1977, Jefferson will be intimately involved with the training of some forty-six residents.

Post-Graduate Programs

The Department of Family Medicine and the faculty at Jefferson have worked with the Pennsylvania Academy of Family Physicians to design annual, continuing education programs. Such programs are designed to meet defined deficiencies and/or interests of primary physicians. The programs allow practicing family physicians the opportunity to review current concepts in such traditional fields as Pediatrics, Obstetrics-Gynecology, Oncology, Psychiatry, Internal Medicine, and Surgery.

It is hoped that Jefferson's efforts in the field of Family Medicine will eventually ameliorate some of the health care delivery problems in the United States that are related to maldistribution of physicians and an undersupply of family physicians. Hopefully, as the program grows and matures, more and more individuals will consider going into Family Medicine and, in turn, become superbly trained individuals who will help to meet and resolve some of the general health requirements of the population. The unselfish support of the administration, faculty, and student body, the encouragement received from professional organizations, from legislatures, and from society in general should prove invaluable in assuring the success of the Department.

Paul C. Brucker, M.D.
Alumni Professor and Chairman

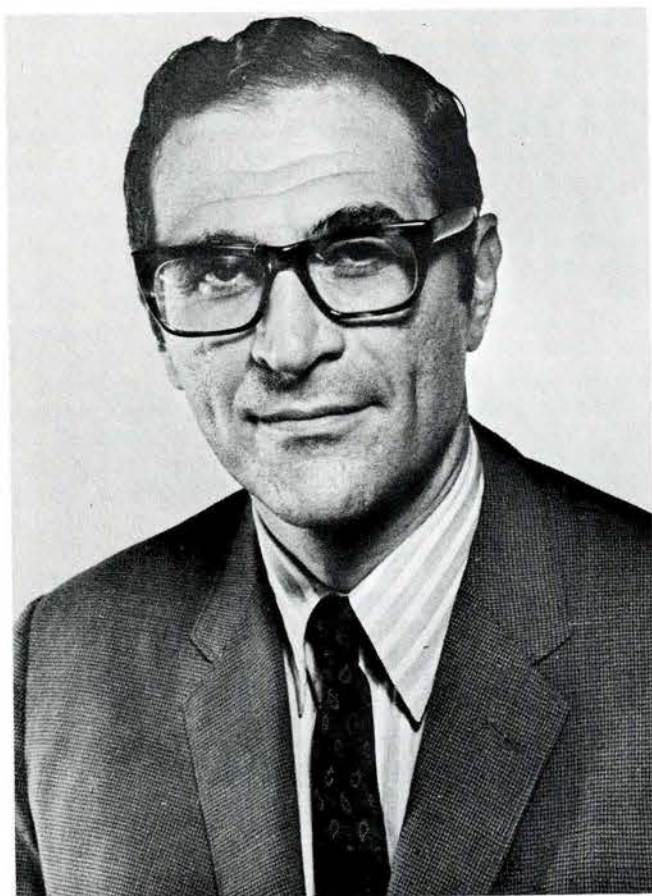


PAUL C. BRUCKER, M.D.

IN SEARCH OF NURSING

The nurse I knew
was so very young, so very shy.
She started her new life
beneath Philadelphia's cloudy gray sky.
Schooling taught her
care, coordinating and cure.
But somehow she knew
she still was unsure.
Advance she did up the ladder
despite the noise and the clatter.
She reached out, she grew;
the sky began to turn blue.
For history, language and science
were more than fun.
Now she knew
the preparation of a nurse had only begun.
Once again,
she took the plunge.
She improved her skills,
she added the necessary theory.
Believe it or not, by this time,
she wasn't even weary.
For now she knows
the nursing process includes learning.
Strength in teaching
is now her yearning.

Deidre Watkins Blank, '67



I. L. STOLOFF, M.D.

THE HEALTH MAINTENANCE PROGRAM AT JEFFERSON

by I.L. Stoloff, M.D.

Associate Professor of Community Health & Preventive Medicine, Associate Professor of Medicine, Thomas Jefferson Medical College

Jefferson's Health Maintenance Program has been in operation for approximately 28 years—one of the oldest of its kind in the area, devoted to preventive medicine. It started in 1947 with funds provided by two Jeffersonians, Drs. Fife and Hamill, and under the guiding wing of Dr. William Harvey Perkins, then Dean of the Medical College. It grew to be a large community program outside of the Jefferson complex of buildings at 6th near Delancey Street in Philadelphia. The program at that time included entire families encompassing pediatrics to geriatrics, with the only limitations being the available knowledge in preventive medicine.

There followed a gradual evolution of ideas in preventive medicine resulting in a more practical clinical specialty with techniques enabling the physician to assess health, screen out those at high risk for a variety of diseases, and where sufficient knowledge exists to apply preventive measures with a promise of improving life expectancy and delaying serious disability. In addition, automation in the laboratory has resulted in a reduction in costs for screening examinations. While the public has responded to the idea of preventive health care, funding for such a program, including government and private insurance, has been slow in responding. Currently, much of the cost must be assumed by the individual requesting the examination. This appears to be short-sighted, in view of the fairly strong evidence that at least with certain diseases, a dollar spent in prevention can save, in some instances, nearly ten times that amount necessary to treat later stages of the disease. These results have been established for carcinoma of the cervix, but may apply to other diseases as well.

The current health maintenance program at Jefferson has been designed as a comprehensive evaluation with emphasis on the primary prevention and early detection of disease, particularly as it relates to the more serious diseases encountered in our population, such as coronary artery, other premature vascular disease and certain cancers. Briefly, the process of screening in the health maintenance program involves the use of questionnaires which reduce physician time and enables a more complete assessment of the individual's history, measurements taken during the physical examination including such important ones as intraocular tension, and others, which emphasize early detection, and finally, laboratory tests directed at the same goals. Then follows a physician's evaluation of the individual's overall health, a period of health education and a follow-up of significant abnormalities.

Results:

We have found it informative and important in the updating of our program to constantly reassess the annual findings. Assessment is a continuous process if one is to obtain the most out of the comprehensive examination offered. It is important to record the yield from each of the maneuvers, including laboratory tests, physical measurements and assessment of historical findings. A cost benefit type of formula must be applied to determine the worth of each of these parts of the examination.

In terms of justification of the concept of preventive medicine—that is to say, does a comprehensive examination alter disability and life expectancy?—we have conflicting schools of thought. There are those who are opposed to comprehensive screening on the basis that it is too expensive, not rewarding, and too fear-provoking for the individual screened. A number of false positive findings are obtained, as well as false negative findings, in the experience of some practitioners. It is my own impression that the overall value

of a comprehensive examination justifies its use in our clinic population. In the first place, sufficient evidence exists on who is prone to coronary artery disease, premature stroke and other vascular diseases, and there are enough good early detection devices for cancer, particularly carcinoma of the cervix, to make it a reasonable certainty that primary prevention and early detection of these most important diseases is feasible. It is also my experience that the overall yield in detecting risk factors important in primary prevention and early detection of certain vascular diseases and cancers more than justifies the annual examination in the age group we are studying, who are mostly over 40. Multiple risks are often encountered. In a background of emotional distress, including marked anxiety and often depression, which makes compliance a difficult problem, we are beginning to recognize and attempt to delineate the causes of poor compliance in our health maintenance program. However, it is my impression that often enough patients heed advice and are able to reverse bad health habits.

With respect to the overall annual yield in our health maintenance program at Jefferson, I have only space enough for a few broad generalizations. Approximately 10-20% of persons have significant abnormalities in blood sugar, cholesterol and other serum lipids, and blood pressure, uncovered by the comprehensive examination. Nearly 20% of persons have significant obesity underlying the preceding metabolic problems and this overall yield constitutes almost 30% of the population in our program. In addition, another 20% of people continue to smoke heavily, which magnifies their risk. Five percent of persons have serious depressions hitherto masked and these require treatment, and finally, three percent of persons have elevated intraocular tension, which makes them prone to premature blindness.

The role of the nurse in the health maintenance program can be extremely important. We have experimented in a limited way with nurses as educators who sum up the patient's individual risks and demonstrate how these risks can be reduced. An example of this is an explanation of ulcerogenic drugs and the adverse effect of aspirin, caffeine, nicotine and alcohol in someone with a past history of a peptic ulcer. The nurse also has a role, I believe, in the follow-up examination, to aid in the compliance of recalcitrant individuals, and finally, I believe, the day will soon come when nurse practitioners will take over the role of the physician in performing the screening physical examination.

The future of Jefferson's Health Maintenance Program will depend upon institutional backing, the interest of professional personnel, such as nurses, medical students and physicians, and the monetary support for preventive medicine. When funds from the Fife-Hamill estates and United States Public Health Service were dissipated, Jefferson returned the program from the community to its own campus. The operation necessarily had to be curtailed and the cost of the

examination to the individual increased. With the closing of Curtis Clinics in June 1975, this program will be operated under the aegis of the Department of Community Health and Preventive Medicine at Jefferson, on a private basis. The overall tentative cost is \$65.00, including the laboratory tests. I have already alluded to the current reluctance of third party insurance programs to fund costs of health maintenance, but this reluctance can be overcome by careful collection of data which indicates the value of the health maintenance examination. Finally, we are constantly striving to improve health assessment by searching for new risk factors, new detection devices and new techniques to obtain compliance. When solid evidence exists attesting to the validity of newer procedures, these must be incorporated in the examination. A recent example involving the use of aerosol antiperspirants will serve to demonstrate this principle. In a comprehensive program attempting to assess the value of periodic chest x-ray, it became clear that certain persons using zirconium-containing antiperspirant aerosols, developed diffuse pulmonary findings consistent with sarcoidosis. Careful analysis suggests that granulomas of the lung in certain individuals may be associated with these sprays. It became important to determine how many persons attending the screening program utilize such sprays and currently, an educational program is being devised for those aerosol users, which clarifies for them the risk associated with the use of these products.

In summary, although the health maintenance program at Jefferson is somewhat confined, compared to the original program devised approximately 28 years ago, it is viable and valuable. The overall yield in our experience has been excellent, although third party support is currently lacking. Public interest continues to run very high in the area of health assessment. I can visualize a new role for the nurse in a health maintenance program.

YOUR SESQUICENTENNIAL CAMPAIGN ONE HUNDRED FIFTY PLUS ONE

It is with pleasure and pride that Jefferson congratulates its Alumnae.

The excellent support of all to the Sesquicentennial Campaign is deeply appreciated and has given a great lift to the future of the University as well as establishing rapport, developing unity and alliance with all the Colleges. We still welcome with open heart and hands any gifts to come our way. At present, our Nurses have contributed \$85,892.00 of our original target of \$100,000.00. It would indeed be wonderful to receive pledges to reach this total goal. The total campaign has now reached \$12,818,000.00 of the planned and expected \$15,000,000.00 goal.

Now that the Sesquicentennial is over, one may ask: Is it really over? What did we accomplish? The real answers will develop only as this money is translated into the education of our people in the last quarter of this century. The inter-disciplinary seminar, held in May 1974, provided a pattern for other continuing education programs that many nurse alumnae have requested. Many of you were there and know the success of this event. The first session following was conducted May 3, 1975 and was received with an enthusiasm that provides a basis for others in the months ahead.

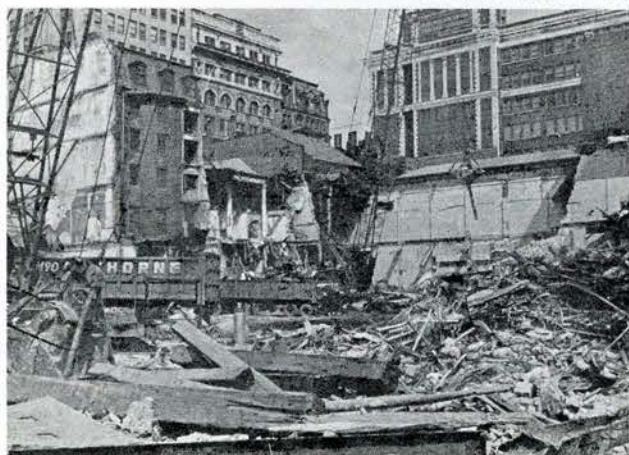
The 22 floors of the New Health Science Center at 9th & Sansom Sts. is already in use and houses Nursing Education. There is a new Primary Health Care Center named "Suzanne & Joseph L. Eastwich Community Health Center", at 29th & Reed Sts. operating with Philadelphia Health Care Plan.

The new building arising north of Locust St. between 10th & 11th St. is being financed by Penna. Higher Education Facilities Authority and not through the Campaign Funds. This building will house 400 cars and should eventually pay for itself. Of great note, this original foundation is constructed so that eight additional stories may be added at a later time for educational purposes.

The Clinical Teaching Facility (Hospital) to be built between 10th & 11th St. & Chestnut to Samson and connected by ramps to the Foederer Pavilion is in the land clearing demolition stage. Bids for this new building will be invited from contractors by the end of June. Tax free Bonds should go on the Market September of this year. The original floor plans have been modified to incorporate designs and plans made by the Nursing staff. Construction should begin before the end of this year.

As we work together toward the future medical care and needs of our University and Nation, I wish to thank everyone for the very great way this campaign was received and for the wonderful donations and good wishes sent to Jefferson.

Harriet K. O'Connor '39



DEMOLITION OF BUILDINGS

BICENTENNIAL CONSORTIUM EXHIBITION — PENN MUTUAL BUILDING (facing INDEPENDENCE SQUARE)

"Twelve Philadelphia area colleges and universities have announced plans for a bicentennial exhibition that will chronicle the contributions of higher education in the Delaware Valley from colonial times to the present.

The exhibition, to be housed in the new Penn Mutual Building facing Independence Square, will include documents, mementoes, artifacts, art work and antique scientific equipment. Among the diverse objects on display will be:

— The 1783 writ by which University of Pennsylvania trustees conferred an honorary degree on George Washington.

— "Jug books" from a century ago, in which are recorded the misdeeds of Villanova students and the punishments meted out to them.

— A ceremonial sword presented to Temple University founder Russell Conwell when he joined the Union Army in 1862.

— Letters from Bryn Mawr College's first president regarding the development of graduate education for women in America.

— An 1873 photograph of students arriving from Liberia to study at Lincoln University.

Participating in the unusual cooperative venture with the schools mentioned above are Drexel and Thomas Jefferson universities; Haverford, La Salle, St. Joseph's and Swarthmore colleges; and Medical College of Pennsylvania. The schools have banded together in a consortium group, coordinated by Dr. Vartan Gregorian, dean of the Faculty of Arts and Sciences at the University of Pennsylvania.

Entitled "Learning, Revolution and Democracy", the exhibition will tell the story of the role of learning in social, political and economic change over a two hundred year period."

The institutions' archival contributions will be displayed in four categories: "Learning in the Colonial Era" "Revolution in Education", "Democracy in Education", and "Contributions to Mankind"

(Excerpts have been taken from an article presented to us by the Director of Public Relations, Thomas Jefferson University)

SCHOLARSHIP REPORT

The Scholarship Committee met two times during the year and recommended the following for scholarships. All were approved.

Mary Ann Tareskas (1968) — Spring term of 1975
Suzanne Mary Tomlinson (1976) — Fall term of 1974
Peggy Eckart Hess (1957) — Fall term of 1974
Betty Bilbrough Alexi (1960) — Fall term of 1974

Respectfully submitted,
Doris E. Bowman, '42

SOCIAL

On December 10, 1974 the Alumnae held their Annual Christmas party in the Faculty Club of the Jefferson Alumni Hall.

On March 10, 1975 the Alumnae held a Dinner and Auction Sale in Jefferson Alumni Hall. Proceeds from the sale were placed in the General Fund.

The main event of the year for the Alumnae Association was the Annual Spring Luncheon held May 3, 1975 in the Crystal Ballroom at the Benjamin Franklin Hotel. There were 339 in attendance.

The Graduating Class of 1975 were guests of the Association. There were 46 members present. A corsage was presented to Ms. Catherine Glavey, Class President.

The 50th Anniversary Class were guests of the Association. Present were: Marian Briggs, Sara Conrad, Elizabeth Scotton, Elizabeth Ewing, Lillian Hartman, Clara Luchsinger, Alverta Kaufman, Helen Haas, Mildred Okiniski, Myrtle Frank, Edith Ogden, and Mafalda Ziegler. In behalf of her class, Marian Briggs presented to the Association to be placed in the Alumnae Room — a class year book, class pin and a picture of Clara Melville.

The guests at the head table were: Miss Doris Bowman — Director of the Diploma School of Nursing. Miss Elizabeth Sweeney — Director of the School of Practical Nursing. Miss Carol Hutelmyer — Director of Nursing Service.

Flowers were presented to the following alumnae: Miss Elizabeth Heaton — 60th Anniversary. Mrs. Ann Craver — Class of 1921. Mrs. Grace Troutman — Class of 1922. Miss Clara Brunner — Class of 1923. Mrs. Julia Ganster — Class of 1924. Mrs. Estelle Taylor — Class of 1924.

The largest Anniversary Class present was the Class of 1950 with 33 members present.

The flowers at the head table were given to Charles O'Donnell, husband of Erma O'Donnell — Class of 1935, who was hospitalized on the day of the luncheon.

The Social Committee extends their thanks to all members for their continued support.

The Annual Spring Luncheon for 1976 will be held the **SECOND** Saturday on **May 8, 1976**. Let us make every effort to make this a big year for all classes.

Janet Hindson '50
Chairman

SICK AND WELFARE

During the past year there were alumnae members hospitalized at Thomas Jefferson University Hospital. Cards were sent and visits made to all known members.

Jeanette Plasterer '51
Chairman

MEMBERSHIP

On January 29, 1975, the structure and functions of the Alumnae Association were outlined for the senior class. Copies of the Alumnae Association Bulletin and Constitution and By-Laws were distributed to the students. The senior class also completed membership forms for entry into the Alumnae Association.

The class was invited to the Annual Luncheon on May 3, 1975. Forty-six members accepted the invitation and were guests of the Association.

Deidre Watkins Blank '67
Chairman

RESOURCE COMMITTEE OF THE BOARD OF TRUSTEES

Regular monthly meetings are held to discuss and report on the Progress of the Campaign, including the amount pledged or received for the Sesquicentennial Campaign.

There is also discussions and reports on the Bequest and Deferred Giving Program and our foundation and corporate relations.

The Jefferson Medical College Alumni and Nurses Alumnae reports are also given at this time.

Betty Piersol '34
Chairman

BULLETIN COMMITTEE REPORT

In editing the 1975 issue of the Bulletin, your committee has endeavored to bring to the attention of Jefferson Alumnae the present day trends in nursing, programs pertaining to the diploma, baccalaureate and practical students; changes in offices and buildings; articles on Family and Preventive Medicine; an over-all picture of Jefferson as it works in 1975; an up-to-date report on the Sesquicentennial Campaign, and many other interesting articles, including an article about the Nursing School 50 years ago.

We especially appreciate the interest that the alumnae have shown by sending in information about themselves, their families and etc. The 220 items which are published under the heading "Class News" in this issue is very gratifying — may we have a larger number in 1976!

Julia Tyler McCracken '34
Evelyn Wilson Frazier '34
Deidre Watkins Blank '67

ADMINISTRATION

I wish to thank all Alumna for co-operating in sending me correct change of names and addresses for the Alumnae files. We like all Alumnae to receive the information of the activities of the University.

We have received from Mary R. Godfrey, Class 1909, the year book of the Class 1910, also the book written by W.M.L. Coplin, M.D. "American Red Cross Hospital 38". This book records the facts relative to the history and service of the American Red Cross Hospital No. 38, organized under the auspices of Jefferson Medical College and Hospital. Station at Nantes, France, 1918 - 1919.

Mrs. Godfrey gave two other books for the book collection.

Marian Robinson Briggs, Class 1925, gave us the year book of 1925, of the Jefferson Medical College, as it was the 100th anniversary of the Medical College, the nurses class pictures are in the year book. Mrs. Briggs also gave the Alumnae Room a photograph of Miss Clara Melville, Directress of Nurses from 1915 to 1937.

We thank these Alumnae Members for the valuable books and pictures they have given to the Alumnae Association.

For Memorabilia

We would like to complete the collection of "Graduating Exercises Programs" for the Alumnae files. The Programs missing from the collection — 1941 to 1947 and 1948 to 1964.

If any Alumna has in her possession one of these Programs and would like to give to the Alumnae Association, or if you want it returned we will make a copy and return the original to you.

A note of interest: From 1893 to 1975 there have been 4572 graduates from the School of Nursing, this includes the 85 members of the Graduating Class of 1975.

Our records show as of May 1975, we have Alumna living in the following countries:

Africa — 1.	England — 2.
China — 1.	Ireland — 1.
Canal Zone — 2.	Saipan Mariana
Canada — 3.	Island — 1.
Caracus — 1.	Brasil — 1.

I am in the Alumnae Room on Tuesdays, 10 to 4, of each week. The Alumnae Room is on the Mezzanine Floor of Jefferson Hall, 11th and Locust Streets, Room M-2. Telephone No. 829-8981.

Martha E. Riland,
Clerk-Typist

LIFE MEMBERS

We congratulate the following, who received life membership in 1975. They have been members of the Alumnae Association for fifty Consecutive years.

Edith Bashore Ogden, '25
1829 Greenwood Ave.
Trenton, N.J. 08009.

Lillian Dilliard Hartman, '25.
108 East 21st Street
Northampton, Pa. 18067.

Myrtle Goldberg Frank, '25.
2121 Faunce Street
Phila., Pa. 19152.

Mary Kimble, '25 Deceased.

Alverta Haines Kaufmann, '25
1114 - 20th Ave.
Altoona, Pa. 16601.

Clara Luchsinger, '25.
5712 North 5th Street
Phila., Pa. 19120.

Margaret MacDonald Staples, '25.
610 Berwick Street
White Haven, Pa. 18661.

Marian Robinson Briggs, '25.
C-104 Concord Arms.
215 W. Montgomery Ave.
Haverford, Pa. 19041.

Nora Smith Fry, '25.
621 University Street
Walla Walla, Wash. 99362.

Anna Malloy Craver, '21.
Walnut Park Plaza
63rd and Walnut Streets
Phila., Pa. 19139.

MISSING ALUMNAE

Please help us find the correct addresses for the following: The letters for the annual giving and luncheon invitations sent February 1975 were returned to the Alumnae Office — marked moved — no forwarding address.

Hattie Williams Book, '19
Nellie Clapsaddle Gillis, '34
Grace A. Roller Castner
Dorothy McComb Talbot, '40
Kathryn Rutt Combs, '43
Mary K. Cupp, '44
Mary Peck Brill, '44
Annie Hansen Rozyko, '49
Nancy Katherman Kohut, '51
Colleen Hysmith Winship, '51
Diane Deardorf Fischer, '54
Aleta Carpo Scott, '57
Mary McKee Blue, '58
Barbara Smith Prendergast, '59
Carolyn Cottringer Kong, '59
Eunice Brittan, '60
Rhoda Smeltzer Little, '60
Virginia Siddell Teitman, '63
Joan Yelen Kleiman, '64
Pauline Lupo, '63
Judy A. Baublitz Mitchell, '66
Amelia Christie Lyons, '67
Ann Gottshall Walker, '67
Kathleen Shannon Cook, '69
Alice Bardfeld, '69
Carolyn Carey, '69
Donna Preston Schmidt, '69
Judith E. Ziplow, '70
Kathryn C. Hudak, '71
Cheryl Baumgarter, '72
Constance E. Logue, '73

**RESUME OF MINUTES OF
ALUMNAE ASSOCIATION MEETINGS**

September 10, 1974

16 members present.

Recommendations of the Board were approved as follows:

1. By-Laws committee to write into the By-Laws for the Annual meeting approval, that Relief Fund benefits be increased from \$300.00 to \$500.00 for active members and from \$150.00 to \$300.00 for associate members. Consideration to be given to including Nursing Homes.
2. To send all Graduates who are in Nursing Homes a \$25.00 check at Christmas, money to be taken from Relief Fund.
3. To increase the Thomas A. Shallow award, given at graduation, to the sum of \$100.00.
4. A motion was made and carried to send to the By-Laws committee the question of increasing the scholarship to \$1000.00 and to give two per year.

Mrs. Lenora Schwartz presented a talk and slide show about the 1974 A.N. A. convention.

October 8, 1974

18 members present.

It was approved that a scholarship be granted to Miss Mary Ann Taraskas for the Spring Term of 1975.

Student Scholarship was granted to Suzanne Mary Tomlinson. We were happy to activate the Adele Lewis Student Scholarship Fund as this was our first recipient. Mrs. Harriet O'Connor reported that a total of \$84,962.00 has been pledged for the Sesquicentennial Campaign.

Slides from a trip to Hawaii were presented by Miss Summers and Miss Piersol.

November 12, 1974.

11 members present.

The Christmas Party was held Tuesday, December 10th, 1974 in Jefferson Alumni Hall.

Graduates who are in Nursing Homes will receive a \$25.00 gift check from the Alumnae Association. This will replace sending Readers Digest, flowers or candy. Revision of By-Laws were presented by Mrs. Betty Miller.

Miss Margaret Donohue from Philadelphia Electric presented a delightful Talk and Slides Show entitled "Seasons for Joy". A small cook book of favorite recipes was presented to everyone present.

January 14, 1975

16 members present.

Miss Hindson reported that the Christmas Party was enjoyed by everyone and the "highlight of the evening" was a visit from Santa.

Mrs. Harriet O'Connor reported that the total amount of the Nurses' Alumnae giving to date to the Sesquicentennial Campaign is \$85,412.00. All records

of the campaign were turned in, to be filed in the Alumnae offices.

Revised By-Laws were presented by Mrs. Betty Miller and approved.

Mildred Kraft gave a most interesting and informative demonstration on "Cover-up" for scars, birthmarks etc.

February 11, 1975

13 members present.

Miss Janet Hindson reported a Buffet Supper and Auction Sale to be held on March 10, 1975. Plans are being made for the Annual Luncheon on May 3, 1975.

The following ballot was approved:

- 1st Vice President—Evelyn Frazier
Mabel Prevost
Martha Riland
Recording Secretary—Betty Piersol
Harriet O'Connor
Board of Directors—Perma Davis
Mary Ellen McDonald
Doris Bowman
Charlotte Hoerst
Eileen Blum

April 8, 1975

17 members present.

A recommendation was made, seconded and carried that the Fall 1975 Scholarship be given to Miss Dolores T. Hughes, class 1969.

Janet Hindson reported that 37 attended the dinner and auction sale in March.

Proceeds were \$107.60. Saturday May 3rd, 1975 is the date for our Annual Luncheon.

Results of the election:

- 1st Vice President—Miss Mabel C. Prevost
Recording Secretary—Miss Betty Piersol
Board of Directors—Miss Doris Bowman
Mrs. Perma E. Davis

A delightful color film "Winter in New England" was presented by Dolores Heckenberger.

May 13, 1975

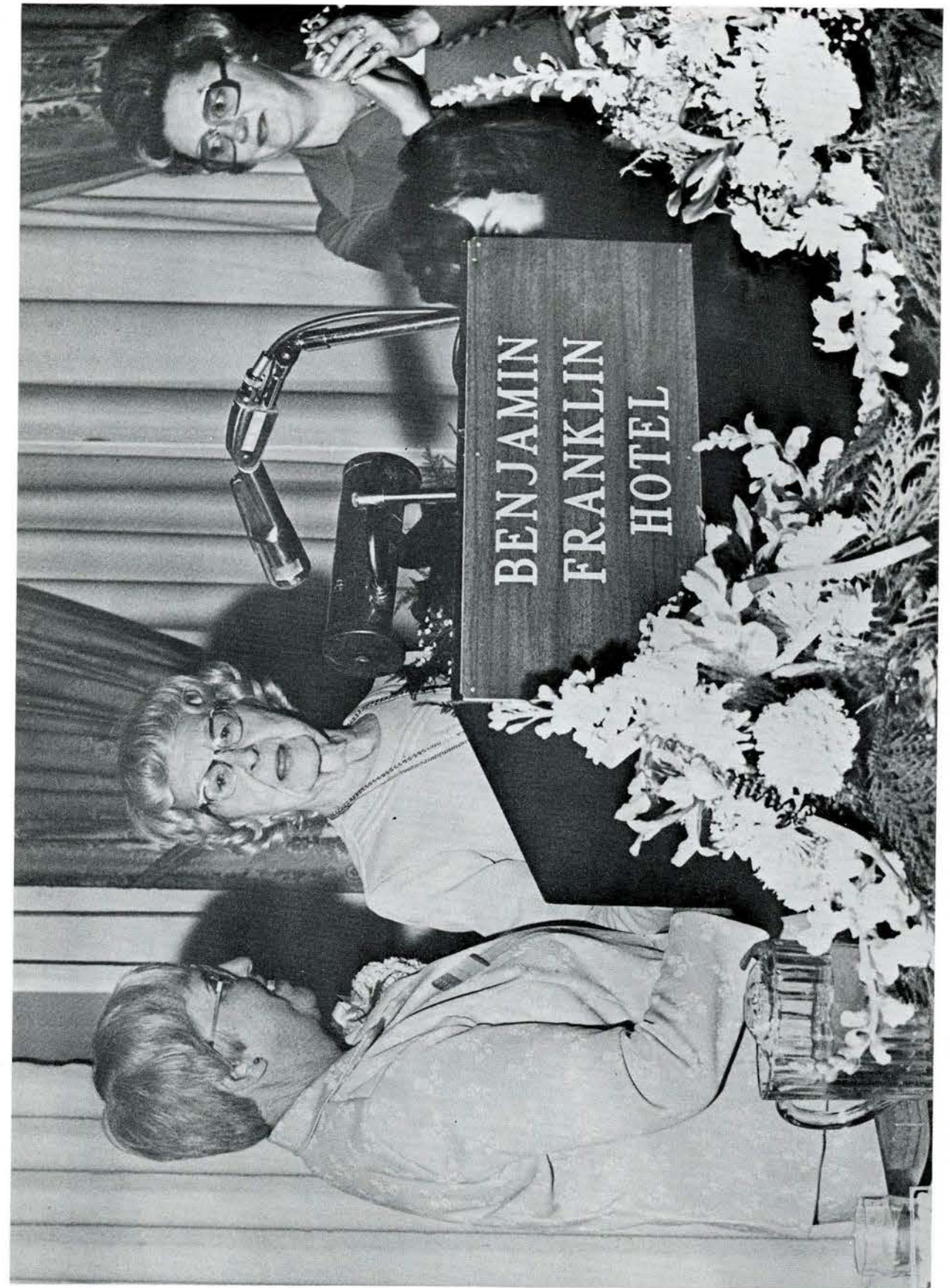
14 members present.

There were 376 reservations for the Alumnae Luncheon with 339 in attendance. The Alumnae Association is still short a little over \$14,000.00 of their goal for the Sesquicentennial Campaign. We have hopes of meeting this goal within the next three years.

We have made \$500.00 from the sale of charms, caps, mugs, paper weights etc. It was recommended and accepted that we give this \$500.00 to the Sesquicentennial Campaign.

A motion was made and approved that the President and Board of Directors conduct all business of an emergency nature until the regular business meeting in September 1975.

Respectfully submitted,
Betty Piersol,
Recording Secretary



MISS SUMMERS PRESENTS FLOWERS TO MISS ELIZABETH HEATON FOR HER 60th ANNIVERSARY, WHILE MISS STAUFFER LOOKS ON.

WAYS AND MEANS COMMITTEE REPORT

May 15, 1974 — May 15, 1975

Thank you once again for your continued support and your generous giving to your Alumnae Association. The contributions to the Relief Fund, Scholarship and General Fund brought the total amount to \$5,778.00. All contributions received after May 15, 1975 will be acknowledged in the Alumnae Bulletin for 1976. Following is a list of contributions according to classes:



HEAD TABLE

STANDING L. TO R.: MISS CAROL HUELMYER, MISS MARYANN STAUFFER, MRS. CAROLINE MASUDA, MISS BETTY PIERSOL.
SEATED L. TO R.: MISS ELIZABETH SWEENEY, MISS DELORES HECKENBERGER, MISS DORIS BOWMAN, MISS MARGARET SUMMERS.

- 1909—\$15.00**
Mary R. Godfrey
- 1914—\$70.00**
Emma Knock
Marguerite Barnett
Irene Hindle
Effie Herring
- 1915—\$30.00**
Elizabeth Heaton
Mattie Turner
- 1916—\$30.00**
Florence Browning
Frances Pangburn
- 1919—\$10.00**
Nora Dwyer
- 1920—\$35.00**
Anna Trego
Ann DeWitt
- 1921—\$40.00**
Henrietta Spruance
Frances Platt
Jennie Kutz
- 1923—\$40.00**
Pearl Shappell
Clara Brunner
Ruth Thompson
Mathilda Peterson
- 1924—\$40.00**
Julia Ganster
Beatrice O'Hara
Lillian Pratt
- 1925—\$116.25**
Mildred Okinishi
Clara Luchsinger
Helen Haas
Marian Briggs
Nora Fry
Edith Ogden
Elizabeth Scotton
Mafalda Ziegler
- 1926—\$50.00**
Grace Kuhns
Josephine Dickerson
Mary Bonenberger
Ernestine Rowe
- 1927—\$105.00**
Margaret Carey
Pauline Gillen
Martha Riland
Anne Phillips
Lillian Mertz
Filomena Doherty
Lorraine Mayers
Isabella Heverly
Pauline Crown
- 1928—\$113.00**
Marion Smith
Dorothy Bennett
Edna Scott
Anna Billie
Elizabeth Diamond
Laura Short
- 1929—\$105.00**
Mabel Prevost
Phyllis Zeitler
Jane Ezell
Ann Chandler
Mabel Nutter
Blanche Henderson
Zelda Mencer
Hazel Beach
- 1930—\$210.00**
Blanche Ford
Elmina Hanges
Annetta Whitehead
Ella Kelsh
Virginia Avery
Thelma Laird
Thelma Wolford
Ruth Heisey
Muriel Canis
Ruth Johnson
Nina Studebaker
Isabelle Widing
Pauline Siegle
Minnie Humphrey
Emma Smeck
Grace Schmidt
Betty Zechman
Hazel Oberdorf
- 1931—\$180.00**
Irene Jones
Mildred Hively
Mary Bistline
Mary Murtha
Elizabeth Gaul
Helen Rodewig
Emma Bahner
Virginia Leo
Bernice Cottrell
Dorothy Peterson
Sue Wells
Agnes Henry
Minnie Bartash
Madelyn Knapp
- 1932—\$65.00**
Ethel Taylor
Erma Painter
Mildred Smith
Mildred Jeffers
Vivian Murray
Dorothea Watson
Gail Willard
Mildred Getz
- 1933—\$125.00**
Katharine Leach
Leona Gehris
Anna Crofford
Sara Baxter
Carolyn Kaltenstein
Pauline Kough
- 1934—\$152.00**
Catherine Gair
Marian Miller
Verna Diehm
Anna Gehrke
Mildred Estrada
Evelyn Frazier
Betty Piersol
Julia McCracken
Mildred Smith
Angela Cozza
Elizabeth Sedway
Margaret Snear
- 1935—\$90.00**
Rita Roeder
Edna McAvoy
Lucille Hand
Esther Benner
Marian Howe
Ruth Judd
Evelyn Curran
Ellen Teague
Mary Moore
Arlene Walther
Mary Evans
Mildred Crone
- 1936—\$62.00**
Mary Menendez
Elizabeth Miller
Mary Wiley
Margaret Ransom
Lydia Yerkes
Evelyn Dute
- 1937—\$112.00**
Harriet Zeller
Virginia Miller
Alice Fulmer
Katherine Rorabaugh
Mildred Hawkesworth
Pauline Leager
Caroline Masuda
Laura Johnson
Florence Keffer
- 1938—\$71.25**
Kathryn Bastian
Isabelle Snedaker
Mary Copeland
Ruth McLean
Madeleine Ullam
Lida Goodell
Edith McCutcheon
Elinor Wentzell
- 1939—\$35.00**
Harriet O'Connor
Charlotte Stacey
Kathreen Martin
Barbara Schutt
Olga Mitchell
Lorraine Phillips
- 1940—\$400.00**
Bernice Sprecher
Stella Wawrynowic
Sara Westler
Ruth Shaner
Ruth Holbrook
Elizabeth Fuhse
Helen Enterline
Esther Musselman
Norma Smith
Hope Moode
Ruth Frazer
Catherine Lambert
Alda Knodel
Viola Hyman
Alma Shofstall
Goldie Pringle
Averne Murphy
Dorothy Rosenberg
Sue Dale
Ellen Carlton
Ellora Meyer
Thelma Taylor
Ida May Varga
Margaret Miller
Marion Tracey
- 1941—\$35.00**
Gene Jerabek
Kathryn Quackenbush
Peggy Summers
Frances Rumberger
- 1942—\$245.00**
Doris Bowman
Mary Jane Braid
Anna Krall
Gladys White
Myrtle Berman
Rhoda Weisz
Ruth MacAdam
Dorothy Cloud
Dorothy Templeton
Irene Polner
- 1943—\$135.00**
Mary Williams
Betty Jane Shaw
Vera Scoggin
Jean Kehm
Esther Kahn
Marion Lash
Marion Morris
Virginia Donohy
- 1944—\$20.00**
Charlotte Ellenbogen
Marjorie Searing

1945—\$85.00

Betty Breaw
 Carolina King
 Gloria Robertson
 Anna Kuba
 Elizabeth Snyder
 Christine Park

1946—\$210.00

Jane Fox
 Ruth Nemeth
 Dorothy Strachan
 Shirley Rush
 Betty Saunderlin
 Jean Collevchio
 Jeanne Supplee
 Elaine Kimbel
 Betty Frommelt

1947—\$192.00

Dorothy Sturr
 Sandy Schwab
 Paula Tyler
 Betty McKim
 Ruth McCormick
 Betty McConnell
 Arlean Miller
 Barbara Marks
 Elizabeth Prisnock
 Dorothy VanVranken
 Virginia Lawrence
 Irene Werner

1948—\$72.00

Inez Merendi
 Virginia McCrone
 Mary Ann Buzydowski
 Mercedes Christ
 Betty Daughenbaugh
 Betty McDonald
 Rachel Herbert
 Phyllis Courtney
 Lillian VanHoy

1949—\$80.00

Eleanor Robinson
 Nancy Ritzman
 Phyllis Huntzinger
 Barbara Breen
 Ruth Wettig
 Lorraine McCall
 Hazel Kogler

1950—\$220.00

Joan Yocum
 Shirley Hoffert
 Joan Clauss
 Janet Hindson
 Rose Mulligan
 Mary Brumbaugh
 Nancy Konstanzer
 Wealthy Shutt
 Geraldine Strye
 June Fujita
 Barbara Ackerman
 Anne Breach
 Donna Gearhart
 Jean Larkin
 Mary Calligan
 Rita Bolinsky
 Dorothy Brett
 Marilyn Gould
 Joan Hermann
 Sara Konstanzer
 Ellen Stahl

1951—\$37.00

Louise O'Neill
 Norma Murray
 Marian Williams
 Nancy Thompson
 Jeanette Plasterer

1952—\$53.00

Lillian Haeberlein
 Ann Nesbella
 Nancy Messick
 Margaret Keates
 Eloise Hippensteel
 Nancy Wilhelm
 Florence Fus

1953—\$125.00

Susann Carney
 Nancy Webster
 Cathleen Keating
 Janet Meredith
 Frances Balistreri

1954—\$65.00

Betty Stone
 Doris Schramm
 Jean Dempsey
 Louisa Hoch
 Mary Ann Stauffer

1955—\$130.00

Nannette Smith
 Carol Justice
 Patricia Magley
 Dolores Heckenberger
 Audrey Priga
 Dawn John
 Naomi Wilson
 Barbara Smith
 Mildred Kline
 Elizabeth Hubbs
 Marianne Shinkevich

1956—\$75.00

M. Faith Graham
 Noreen Poole
 Betty L. Miller
 Florence Roche
 Marlene Mika
 Ann Kniedel
 Shirley Doernte
 Joyce Hagopian

1957—\$75.00

Ann Snyder
 Carol Gray
 Jeanne Abbott
 Rose Marie Tomasello
 Shirley Johns

1958—\$140.00

Shirley Walker
 Annunciata Daneman
 Barbara Kelso
 Sylvia Hause
 Mulveena Baldauf
 Marie Keenan
 Doris Stephens
 Barbara Brodovsky
 Lois Toomey

1959—\$89.00

Nancy Crawford
 Jacqueline Long
 Judith Bloes
 Arlene Bauman
 Elizabeth Ossman
 Charlotte Hoerst
 Carol Wenzel

1960—\$23.00

Judith Stauffer
 Barbara Umbenhauer
 Carolyn Goepfert
 Joann Taylor
 Madeline Glass

1961—\$30.00

Betty Lou Woods
 Patricia Richardson
 Elaine Griffin
 Loretta Cunningham
 Mary Parrish

1962—\$70.00

Patricia Goetz
 Joyce Kormanis
 Terry Hohl
 Carol Green
 Louise Fox
 Carolee Mitchell
 Marcie Moore
 Susan Leake
 Carolyn Bewsher
 F. Suzanne Carter

1963—\$49.00

Shirley Weller
 Mary Gillen
 Frances McGill
 Margaret MacKenzie
 Maureen Maguire
 Sharon Sites
 Dorothy Brown
 Ann Fronduti

1964—\$65.00

Virginia Best
 Mary Lou Schubel
 Kathleen Jones
 Elizabeth Reed
 Barbara Anderson
 Carol Teplick
 Patricia Gardner
 Jeraldine Kohut

1965—\$322.00

Lois Foxen
 Diana Hodges
 Jenny Adams
 Dorthea Hamilton
 Pamela Drzik
 Janet Respass
 Barbara Keller
 Betsy Zenter
 Carolyn Bohn
 Judith Getz
 Rita Mendel
 Ellen Whitehorne
 Adrienne Daughenbaugh
 Susan Smeltz
 Margaret Frishmuth
 Barbara Schroeder
 Judith Moyse
 Catherine Dirr
 Bonnie Inglis

1966—\$105.00

Patricia Welsh
 Judith Tracy
 Lauralee Cunningham
 Suzanne Barclay
 Judith Hoefle
 Barbara Ruehl
 Catherine Karabasz
 Margaret Connell
 Edna Moan
 Bonnie Ann Crofford
 Agnes Kirschner

1967—\$145.00

Sally Fenlin
 Joan Hampf
 Karen Bedell
 Carol McClerkin

In Memory of:

Florence Hawke, class of 1927—\$25.00 to the General Fund by her sister, May E. Hawke.
 Lorraine Maciejewski Wallen, class of 1938—\$5.00 to the General Fund by Mary K. Copeland, class of 1938.

1968—\$105.00

Carol Woodruff
 Jill Bower
 Linda Goodman
 Linda Lauria
 Rita Bechetti
 Eileen Killough

1968—\$105.00

Anne Vogel
 Pat Frank
 Virginia Waldron
 Sandra Kenton
 Maryann Taraskis
 Halina Warmbrod
 Eileen Fagnani
 Lorie Brown
 Bonnie Siegrist
 Margaret Kern
 Carol Leventhal
 Karen Del Campo

1969—\$120.00

Kay Jennings
 Nancy Argonish
 Ruth Iuliano
 Marlyn Rourke
 Marie Panebianco
 Caroline Moriuchi
 Linda Barbour
 Annie Kahn
 Dolores Hughes
 Mary Reede

1970—\$62.00

Gail Gallagher
 Linda Galbrecht
 Sandra Hall
 Gini-Ann Scott
 Phyllis Randazzo
 Carol Phillips
 Suzanne McLean
 Susan Wolfe

1971—\$65.00

Carol Cleri
 Judy Jones
 Peggy Kuster
 Grace Spena
 Lynn Streepier
 Kathryn Hayes

1972—\$100.00

Christine Hodder
 Helen Eriksen
 Nancy Bodner
 Kathleen Konrad
 Donna Phelps
 Denise Wychowanec
 Bonnie Peffer
 Cheryl Neff

1973—\$45.00

Kate Felix
 Catherine Aukerman
 Shelah Luber
 Linda Quinn

1974—\$70.00

Denise Boyd
 Julie Jennings
 Margaret Birch
 Debora Boyle
 Michele Verdeur
 Judith Bisson
 Margaret Ott
 Nancy Hampton
 Patricia Moyer

CLASS NEWS

1909—Mary Robinson Godfrey, 303 N. Market St., Ligonier, Pa. 15658. My granddaughter, Mrs. Pandora Gerard Aleman, living in Panama, was made a "writer for the U.S. government, Canal Zone."

1914—Effie B. Herring, Fairfield, Pa. 17320. Since I have retired, my sister and I live in our home town. Senior Citizens meetings is my part time job.

Irene Lesser Hindle, 721 Orange Ave., Yuma, Arizona 85364. Happy to report my 85th birthday was Easter Sunday, March 30, 1975.

1915—Mattie Allen Turner, Haverford Villa C-306, Haverford, Pa. 19041. Daughter, Nancy Turner Reddy, died December 22, 1974.

1916—Florence June Browning, 29 East Oak, Oakland, Maryland 21550. All well and happy!

Frances E. Butler Pangburn, Lewisburg, Pa. 17837. Almost 86 years old. General health good — limited at present due to cataract operation. Have three daughters and seven grandchildren, also two great grandchildren. I live alone and like it!

1923—Ruth Louise Knoll Thompson, 233 Adams Ave., Pitman, N.J. 08071. My sister, Matilda Knoll Petersen, also graduated in the Class of 1923. We are making our home together in Pitman; we are both widows.

Pearl Moser Shappell, 2144 Highland, Allentown, Pa. 18104. Retirement — aging with aches and pains — living 6 months in Florida and 6 months in Pennsylvania — travel keeps me going. Hello to all!

1924—W. H.—Beatrice Foote O'Hara, 308 Elm Ave., Langhorne, Pa. 19047. My husband, John J. O'Hara, died August 13, 1972.

1925—Elizabeth Scotton, P.O. Box 36, Hartly, Del. 19953. My sister who was blind, died in August. So it is lonely living alone.

1926—Ernestine M. Grundkouski Rowe, 1035 Beach Rd., Cheekrowaga, N.Y. 14225. I hope to meet the members of the Class of 1926 at our 50th Anniversary in 1976.

Marjorie Workinger, 112 W. Broadway, Red Lion, Pa. 17356. The Program Agency of the United Presbyterian Church of the U.S.A., recognized Miss Workinger as an honorary member for service to the association and the church. She was also given a silver pin and a certificate.

Josephine C. Miles Dickerson, 540 E. Prospect Ave., State College, Pa. 16801. Russell B. Dickerson (husband) was elected District Governor of Rotary District 735 for 1974-75.

1927—Lorraine Knoll Mayers, 9614 Dittman St., Philadelphia, Pa. 19114. No news worth reporting.

1928—Edna W. Scott, 444 Old Lancaster Rd., Haverford, Pa. 19041. Retired.

Adalyne Kinkead Starkey, Apt. F6 - 55 S. Valley Rd., Paoli, Pa. 19301. Retired public school nurse.

1929—Hazel Besecker Beach, 3210 Overbrook N.W., Canton, Ohio 44709. Sorry to have missed the luncheon — was in Bermuda at that time. Grand to have my husband retired.

1930—Virginia Avery, 100 Roberts St., Bldg. 22, Apt. 2, Binghamton, N.Y. 13901. I have retired and am moving to Binghamton.

Emma Ruth Sellers Johnson, 100 B Sunrise Ct. Village, Whiting, N.J. 08759. Since my husband's retirement five years ago, we have been travelling throughout the United States, Eastern and Western Canada, also Nova Scotia, Mexico and Guatemala. Perhaps this summer we will go to Alaska while our health is still good. Thank you for sending me the 1974

Bulletin, this way I can read of what great strides our nursing school and hospital are involved in for better treatment and nursing care of mankind, also all about my classmates.

Blanche Ford, Box 13 Periwinkle Tr. Pk., Sanibel, Fla. 33957. Retired, but keeping busy with part time nursing (vol.) — church — Community and shell club work — just love it. Most of all have time to enjoy God's beauty and people.

1931—Emma H. Bahner, 206 S. 13th St., Phila., Pa. 19107. We celebrate our 45th Anniversary in 1976!

Irene Jones, 650 Pinellas Pt. Dr. South, St. Petersburg, Fla. 33705. Joined the A.A.U.W. St. Petersburg Chapter. Enjoy meeting women from all parts of the U.S.A.

Mildred English Hively, 10824 Caron Dr., Sun City, Ariz. 85351. Regent Aqua Tria D.A.R., Sec. Nurses R.N. Club, Membership Chairman Sun City A.A.U.W. Satellite Association, Chaplain State Huguenot Society.

(W.H.) Mary Crowe Murtha, 25 Grandview Ave., Pleasantville, N.Y. 10570. I lost my husband, Joseph, this past year. He died of carcinoma of the lung in October of 1974. I am working as a part time volunteer at the New York Hospital — Cornell Medical Center in White Plains, N.Y.

1932—Vivian Passmore Murray, 3026 Old Freeport Rd., Natroma Hts., Pa. 15065. Retired from private duty about 4 years ago—busy keeping house, gardening and sewing. Son, Billy, at home—works at the Allegheny Ludlum Steel mill. Daughter, Nancy, is a construction worker, a "Hard Hat". She qualified for the Joint Apprenticeship Program operated by the Carpenter's District of Western Pennsylvania and the Master Builders Association of Western Pennsylvania. She has degrees in sociology and art from Indiana University of Pa. She is said to be the only woman (age 25) apprentice in the 29 counties covered by the Carpenters District Council of Pennsylvania.

Thelma Showers Morris, 1406 Elmira St., Williamsport, Pa. 17701. Am retiring from Williamsport Area Community College June 30th to care for my roses and enjoy my granddaughter.

1933—Sara Blackburn Baxter, 1100 Curlew Rd. Lot 220, Dunedin, Fla. 33528. Retired and moved to Dunedin, Florida.

Anna M. Woodring Crofford, 45 Sullivan Rd., Wayne, Pa. 19087. Administrator of Cathart Home, Wayne, Pa. Attended the Convention of American College of Nursing Home Administrators in San Francisco where I was advanced from member to a Fellow in the College.

Marion Pollitt Carey, 321 Union St., Milton, Del. 19968. Second grandchild, Baby Boy, Derek Tull Dutton, born Oct. 12, 1974—mother, Marilyn Carey Dutton.

1934—Catherine Smulling Gair, Box 287, Douglas, Alaska 99824. Retired.

Eva Ingraham Grenoble, 206 N. Main St., Muncy, Pa. 17756. I have a daughter 38 years of age and three grandchildren. My son died at the age of 20. My past positions have been that of Night Supervisor, O.B. Supervisor, Medical-Surgical Supervisor, and now General Duty, part time only. I work at the Muncy Valley Hospital, Muncy, Pa. Mrs. Isabelle Diezel, R.N., a Jefferson Alumna, worked there many years while I was there. She has since died.

Anna Jacoby Gehrke, 3404 Romig Ave., Reading, Pa. 19606. Received Certification for Occupational Health Nurse.

(W. H.) Elizabeth Zajac Sedway, 1040 Neola St., Los Angeles, Calif. 90041. My husband, Frank J. Sedway, died May 2, 1974. Nothing good has happened to me since.

Betty Piersol, Tillie Wall Ghare, Mid Dunkle Bowman, Evelyn Wilson Frazier, Verna Hertzler Diehm, and Julie Tyler McCracken attended the 1975 luncheon. We are hoping for a larger '34 class attendance in '76!

1935—Esther Patton Benner, 1314 Blooming Glen Rd., Perkasie, Pa. 18944. Sorry to miss the luncheon, but my husband had heart surgery complicated by a left sided hemiplegia. We are both retired. This is our 40th Anniversary!

Mary Coles Moore, R.D. #5, Bridgeton, N.J. 08302. Retired as of Jan. 1, 1975.

Ellen Crawford Teague, Oak Rd. & Northwestern Ave., Phila., Pa. 19118. I have been made a "Benjamin Franklin Fellow".

(W.H.) Mildred Armstrong Crone, 30 Gillett St., Apt. 4F, Hartford, Conn. 06105. Retired since 1954; now 86 years old.

1936—Mary E. Tananis, 523 C Reno Ave., New Cumberland, Pa. 17070. Retired from the position of Nursing Services Consultant for the Penna. Dept. of Health on Dec. 10, 1974, after 35 years of consecutive service. Would very much like to hear from friends!

1937—Alice Irene Leatherman Fulmer, 323 N. Oak Ave., Clifton Heights, Pa. 19018. I am still my husband's wife. That position is favorable to myself.

Mildred Woodhead Hawkesworth, P.O. Box 166, Rockport, Mass. 01966. Well, I am involved in a community project being chairman of the Pigeon Cove Community Center Building Committee. (Pigeon Cove is the northern section of Rockport.) Also, am president of the Pigeon Cove Circle which is a woman's club that was established in 1835—the same age as the town of Rockport—135 years!

1938—Emma Winger Steerman, R.D. 4, Chambersburg, Pa. 17201. Retired 1974—was Night Supv. at Franklin County Nursing Home. Son—Charles E. Steerman—earned his Ph.D. in Physics and Math at Univ. of Maryland—married Dr. Ruth Lebo Steerman—Pediatrics—hematology—Hyattsville, Md.

Kathryn V. Bastian, 4208 Ford Rd., Lawton, Ok. 73501. Enjoying retirement in the Great Plains Area of Oklahoma—S.W.

1939—Barbara G. Shutt, R.D. 32, Noble Hill Rd., Norwich, Conn. 06350. Present position: Director, Mohegan Community College Nursing Program.

Charlotte Smith Stacey, 1889 Western Rd., Charlottesville, Va. 22903. My husband died May 4, 1973.

1940—Ruth Ritter Holbrook, 398 Penn Ave., W. Reading, Penna. 19611. Certified Occupational Health Nurse. Oldest son, J. Kimsey, is a School Board employee. Son, Douglas L., graduated from University of Houston, May 17, 1975 in the top ten most outstanding students of the Un. of Houston and most outstanding student in the College of Business Adm.

Marion Kustay Sobiesiak, Box 887, Cherryville, Pa. 18035. Son, Joseph, studying for Priesthood—received Deaconate May 24, 1975 (hopefully priesthood in 1976).

Margaret Mary Foor Miller, 155 Mt. Vernon St., Dedham, Mass. 02026. Kevin (son) graduate student Penn State University. Karin, physical educ. teacher, Hyde Park High School, Mass.

1941—Frances Louise Huston Rumberger, 2111 Yale Ave., Camp Hill, Pa. 17011. Husband promotion to Vice President of Marketing for Capital Blue Cross of Central Pennsylvania. CLASS MEMBERS NOTE: PLEASE MAKE A SPECIAL EFFORT TO COME TO OUR 35th REUNION IN MAY OF 1976. BRING YOUR OWN SPIRIT OF '76!

1942—Gladys R. Reed White, 301 S. 6th St., North Wales, Pa. 19454. Husband, Robert E., Vice Pres. of John F. Scanlon, Inc., Phila. Oldest—Mary Sue—graduated from Wesley College 1974; works for COPE, Ambler, Pa. Son—R. Jack, Freshman at Slippery Rock State College, Pa. Youngest—Bette Ann—Junior at North Penn High School; won sewing contest. ME—I am still Health Officer for Boro of North Wales.

Mary Jane Lardin Braid, Box 53, McLean, Ill. 61754. I retired from my part time work in April 1974. We now have 2 grandsons. Our youngest child was married in March 1974.

Anna Elizabeth Alexander Krall, 47 Elm St., Eldred, Pa. 16731. Youngest son, Robert, will be a Senior at Thomas Jefferson University in Sept.—presently a Junior there.

Gladys D. Keiper, 349 W. Main St., Ephrata, Pa. 17522. New position—Director, Division of Institutional Nursing, Harrisburg, Pa.

1943—Betty Hanes McKim, 3165 College, Baker, Oregon 97814. Have a son who is a second year surgical resident (1974) in Fresno, Calif. Daughter graduated from Un. of Colorado Music School in Boulder, Colorado.

Ann Louise Trostle Miller, 750 East Pike, Indiana, Pa. 15701. Son, Paul, graduating from Nyack College in May. He and his wife plan to go to foreign mission field after further study.

1945—Gloria Sheckler Robertson, R.F.D. #1, Valley View Heights, Ford City, Pa. 16226. Oldest daughter, Carol, graduates from Cornell Un. with a B.S. in Nursing. My husband just passed his Family Practice Boards. Daughter—Physical Education. My youngest, Scott, is 17 and still in high school.

1946—E. Dorothy Gilardone Strachan, Box 351, R.#1, Fleetwood, Pa. 19522. Oldest son, Douglas, graduated 5/17/74 from the Lutheran Theological Seminary with a degree of Masters of Arts in Religion.

Ruth Fairweather Nemeth, 246 Bryn Mawr Ave., Lansdowne, Pa. 19050. I was promoted to Psychiatric Nurse II in March 1974 at the Haverford State Hospital.

Betty Weldon Saunderson, Box 91, Quinton, N.J. 08072. Son, George, graduated from the Hospital of Univ. of Penna. April 17, 1975 as a male nurse. Married a class mate May 10, 1975. Will work in ICU at Penna. Hospital.

Jeanne L. Supplee, U.S. Kirk Army Hospital, Aberdeen Proving Ground, Md. 21005. Reassigned July 1974 to U.S. Kirk Army Hospital, Aberdeen Proving Ground, Md., as Chief, Dept. of Nursing. Living in Bel Air, Maryland.

Jeanne Null Collevichio, 17 Linda Drive, Allendale, N.J. 07401. Tom Collevichio Jr., will graduate from Illinois State Univ. in Dec. 1975. Joanne Collevichio graduated from Valparaiso Univ. in 1973 and currently is an officer in the army, Huntsville, Alabama. (The Redstone Missile Base) as a Social Worker for Army Personnel. Barbara will graduate in June from Northern Highland Regional High School in Allendale, N.J. and will be a freshman in September 1975 at Hood College, Frederick, Md. Tom, husband, is Vice President of Interstate United Corp., N.Y. City—in charge of N.Y. and N.J.—Business and Industry Development. I occasionally do private duty at Valley Hospital in Ridgewood, N.J.

1947—Dorothy Mertz Sturr, 9041 Charloma Drive, Downey, Calif. 90240. Appointment by Gov. Reagan in 1974 to Areawide, Mental Retardation Board for 3 years. Daughter, Judy Pabst, became a D.D.S. June 1974—U.S.C.

Maude S. (Sandy) Sanders Schwab, 985 Manor Dr., Apt. 36, Palm Springs, Fla. 33460. In October 1973 I attended the First International Congress of the World Federation of Neuro-surgical Nurses in Tokyo, Japan, as a guest. Wonderful experience! Jack graduated from College May 26th. Steve finished his Junior Year. "Schwaby" and I are both working hard.

Dorothy Harris Van Vranken, 1156 Hidden Springs, Glendora, Ca. 91740. Son—Bruce—will graduate from Medical College this June and will be coming back to California. I am teaching part time at Citrus Community College.

Arlean V. Miller, L.T.C., 115 W. Mifflin St., Orwinstown, Pa. 17961. Arlean's mother writes "Last April Arlean reported to Ft. Sheridan, Ill. as Chief Nurse of the U.S. Army Health Clinic stationed there. She was promoted to Lt. Col. as of August 1st, 1974."

1948—Betty L. Johns McDonald, 602 Harvey Rd., Claymont, Del. 19703. Sad news, Husband Bill, age 46 years died suddenly 12/14/74 of a coronary. Married son, David, will graduate this June with a B.S. from Thomas Jefferson Un. School of Allied Health Sciences as a Medical Technician. Mercedes Frances Breen Christ, 33 Louise Drive, Milltown, N.J. 08850. Son, William, elected to membership in Phi Beta Kappa.

Mildred Yohey Watkins, 620 Towanda St., White Haven, Pa. 18661. Returning to Miami, Fla., where my husband, George, has been named Ass't. General Manager at Lithgow Funeral Centers, Inc. Regret leaving Penna. after less than 3 years, but we are returning to our home of the previous 23 years.

Laurette Dutton Inge, 1214 S.W. 36 Ave., Miami, Fla. 33135. I am receiving my B.S. degree in nursing from Florida International University June 14, 1975.

1949—Ruth Lange Wettig, 6250 S.W. 88th St., Miami, Fla. 33156. Daughter, Nancy, is in Nurses Training at Jackson Memorial Hospital in Miami. She will graduate in March 1976.

Hazel Sheckler Kigler, 802 Rugby Rd., Phillipsburg, N.J. 08865. Our daughter, Anne, is attending St. Olaf College in Minnesota and Paul will begin at Rider in the fall. I was sorry to miss our 25th Reunion. I had really been looking forward to seeing everyone again. However, I got involved in playing the part of Mame in our school production of that musical.

1950—Mary Louise Moore Brumbaugh, 7337 Central Ave., Lemon Grove, Calif. 92045. Husband (Simon C. Jr., M.D. Jefferson 1951) Treas. of Calif. Acad. of Family Practice. Four of our seven girls are in college this year, also one son-in-law.

Barbara Fisher Ackerman, Apple Brook Farm, Kein Rd., Linfield, Pa. 19468. Our 16 year old daughter, Barbara Ann, won a first prize at the 1975 Philadelphia Flower and Garden Show. Barbara is a Junior at the Shipley School in Bryn Mawr. Her prize entry was Little Gem, miniature trumpet narcissus.

Donna Elaine Fleck Gearhart, R.D. 2, Box 83, Aldon Acres, Martinsburg, Pa. 16662. Our son, R. Alan, graduated from Penn State, Dec. 1973—B.S. in Agricultural Education. My husband, Don and I are kept busy with numerous Community service projects. All three of us are "incorporated" in our growing dairy business.

1951—Nina Davis Weller, 1227 Starling, Millville, N.J. 08332. Daughter, Karen—graduates May 11, 1975—Univ. of North Carolina—Fashion Designer. Son, Tom, is pre-med student at Muhlenberg College, Allentown, Pa.

Marian Thorp Williams, 5812 Saul St., Phila., Pa. 19149. For past year have been serving as Head Nurse on a 26 bed Coed Unit at Friends Psychiatric Hospital.

1952—Nancy Lee Greising Wilhelm, 993 Bellaire Lane, Rockledge, Fla. 32955. My husband retired from the Air Force in June 1971. Our three sons, my husband and I, are very active in church and community affairs. Best wishes to all!

1953—Frances Kazmierczak Kazmer Baltstrieri, 2455 W. 116th St., Milwaukee, Wis. 53226. Dr. Vincenez (James) Baltstrieri, Ph.D., M.D. Psychiatrist 1968-1975—successful special education program (Health Aid) Junior Academy Inc., City and State welfare financed and approved.

Nancy Albright Webster, 20 Longview Ave., Freehold, N.J. 07728. June 1974—received B.A. from Jersey City State College in Health Sciences. Also am teaching in a Vocational High School.

1954—Mary Ann Stauffer, 1020 Spruce St., Philadelphia, Pa. 19107. Chairman of Educational Conference on March 8, 1975 at the Bellevue-Stratford Hotel (1st Vice Pres. Phila. Association of Industrial Nurses). Elected President of Philadelphia Industrial Nurses Association for the next two years in May 1975.

Doris Henry Schramm, 1655 Jupiter Rd., Venice, Fla. 33595. I completed my course and am now employed as Family Planning Nurse Practitioner in addition to Public Health Nurse at our County Health Dept.

Betty Louise Richards Stone, 2019 S.E. 13th St., Ocala, Fla. 32670. 2 children in college at Vanderbilt.

1955—Barbara G. Smith, 2548 Prescott Rd., Havertown, Pa. 19083. Instructor—Outpatient—E.R.—Lankenau Hospital.

Dawn Deitman John, 2210 McCutchen Pl., Pensacola, Fla. 32503. I was elected President of the Women's Auxiliary to Escambia County Medical Society for 1975 and 76.

Elizabeth M. Jones Hubbs, 2051 A Green House Pl., Kirtland AFB, N. Mexico 87118. Presently a sophomore at Un. of New Mexico School of Nursing. Had planned on attending our 20th reunion, but sorry to say finals are the week after. See you all at our 25th! Have enjoyed the friendship of Sue Lloyd, another sophomore at Un. of N. Mexico and a more recent Jeff graduate. Both of us performing well due to our great "Jeff" background.

Charlotte Hoffman Orvis, 3270 Ember St. N.E., Marietta, Ga. 30062. My husband died in a plane crash on June 15, 1973.

1956—M. Faith Stewart Graham, 301 W. Margaret Ln., Hillsborough, N.C. 27278. I am employed at Watts Hospital in Durham as Nursing Instructor in their diploma school of nursing. Daughter, Lynn, graduates from high school this year.

Noreen King Poole, 242 E. Kalmia Drive, Lake Park, Fla. 33403. We have been living here on Florida's "Gold Coast" for almost six years and loving every minute of the warmth and sunshine. While in Detroit (1966-1969) I received my BSN from Wayne State University. I have just received (March 1975) an M Ed from Florida Atlantic University and have been teaching Human Growth and Development and Clinical Psychiatric Nursing at Palm Beach Junior College for the past two years. Our three boys are now ages 14, 12 and 10. Bill is an engineer at Pratt-Whitney, Florida Research and Development Center. To any and all our former friends and classmates coming to visit our sunshine state, please look us up—we would love to see you!

1957—Julia Fernandez Placendo, Box 71, Lake Rd., Newfield, N.J. 08344. October 1974—graduated from Glassboro State with a BA in School Nursing and Health Education. Working as School Nurse at Delsea Regional H.S., Franklinville, N.J.

Georgann Jacobs Miller, 37 N. 17th St., Allentown, Pa. 18104. Husband, Asst. Dir. Elem. Ed. Allentown School Dist.

Shirley Imler Johns, 1141 Fairmont Drive, Harrisburg, Pa. 17112. Now working as an Instructor in Staff Education Dept. at Harrisburg Hospital. Children — Matthew — 6 years; Luann — 2 years.

1958—Marie Sarappa Keinan, 8 Clement Drive, Woodbury, N.J. 08096. My 16 year old son, Jerry Jr., was recently inducted into the National Honor Society at West Deptford High School, Thorofare, N.J.

1959—Janet Beverly Morris Renn, R.D. 1, Edinboro, Pa. 16412. I was promoted to Relief Night Supv. at 170 bed Doctors Hospital in Erie, Pa. I am continuing to work part time. My husband, Jim, is Associate Professor of Chemistry at Edinboro State College. Our three daughters, Janet, Julie and Jennifer, are ages 13, 12 and 5 years respectively.

1960—Judith Haas Stauffer, 3729 Meyer Lane, Hatboro, Pa. 19040. Presently not working; enjoying our sons, Todd age 9 years and Tim age 6 years.

Carolyn Ressler Goepfert, 139 Westfield Rd., Holyoke, Mass. 01040. We had our third daughter Jan. 5, 1975—Joan Ellen. She joins Katie, age 6 and Betsy, age 4.

Joeann Guthrey Taylor, 113 Geneva Ave., Westmont, N.J. 08108. I am still working for Dr. Templeton, running heart lung machine at Lourdes Hospital in Camden, N.J.

1961—Betty Lou Simonson Woods, 700 Floret Ave., Reading, Pa. 19605. I graduated from Millersville State College in August 1974, with a B.S. in Education. I am now Director-Nursing Service, Community General Hospital, Reading.

Patricia Smith Richardson, 19 1st Ave., Atwater, Calif. 95301. Have 16 months old daughter—Tina Marie. Expect another child in August. Husband still in military—retires in 5 years.

Loretta Davis Cunninghame, 914 Third Place, Plainfield, N.J. 07060. "Progress".

Mary W. Parrish, 1209 Haworth St., Phila., Pa. 19124. Am working as a volunteer with retarded adults. Once in a while do private duty.

1962—Frances Suzanne Rumberger Carter, 901 Quail Ave., Pittsburgh, Pa. 15202. Presently working in a cardiac catheterization laboratory and enjoy this cardiology specialty very much.

Joyce Ann McHugh Kormanis, Ford Brazil, S.A., Caixa Postal 8610, Sao Paulo, Brazil 01000. George promoted to executive engineer in Ford at Brazil. In Dec. 1973 we traveled 7,000 miles with 4 children—ages 10½, 9, 4, and 2 to Sao Paulo. Our experiences have been fabulous and frustrating, enriching and depressing. Our greatest challenge—learning Portuguese, the spoken language; and we have! This is life at its fullest! Parabens a voces! (Written in May 1974)

Patricia Ann Thomas Goetz, Box 4, Greencastle, Pa. 17225. Have one child. Nursing family members and being housewife and farm helper.

Susan Eckerd Leake, 1239 Harrow St., Charleston, S.C. 29407. I am now A.S.P.O. provisionally certified and a childbirth educator. Childbirth education continues to grow in Charleston—a fun way to keep in touch with the world of medicine.

Louise Baxter Fox, 3236 Trevoise Ave., Trevoise, Pa. 19041. Husband received his Master's Degree in Education in August 1974.

Marcie Grieshaber Moore, South 67 West 13014 Larkspur Rd., Hales Corners, Wisconsin 53130. Finished #1 in the GLM (Graduated Length Method) Ski Instructors' Certification course at Alpine Valley in January. Elected Secretary of Fountainwood Pool Association. Mark, age 6, enjoying kindergarten and preparing for 1st grade. Mark won a first place medal in the kids fun race (skiing) at Alpine Valley in February. Bob still managing the midwest for Warren-Teed Pharmaceuticals, Inc.

Carol Frame Green, 615 W. South St., Carlisle, Pa. 17013. My husband just went into orthopedic practice in Carlisle, Pa. We just love the town and our new home.

Terry Figueiredo Hohl, 379 Veronica Ave., Upland, Calif. 91786. My husband, Joe, (Jeff '63) is an orthopedist with Kaiser Foundation Hospital here in Fontana, I am working part time in the E.R. of a local hospital. We are kept very busy with our 4 children and their many activities.

1963—Maureen C. Maguire, 6908 Lachlan Cr., Baltimore, Md. 21239. Life is very exciting around Hopkins these days. In addition to directing the Pediatrics Nurse Practitioner Program, I am part of the effort to launch the Baccalaureate Nursing Program—the first of many planned programs in Nursing Ed.

Sharon L. Bricker Sites, 522 C Cherry Tree Rd., Aston, Pa. 19014. Returned to work in an operating room on a part time basis after many years of retirement.

Shirley Marat Weller, 6075 Soledad Mt. Rd., La Jolla, Calif. 92037. Husband, Michael (Jeff '63) leaving Academic Medicine to join the Radiology group at Long Beach Memorial Hospital on August 1st. He will continue to practice Pediatric Radiology there. Jennifer (3) and Andrew (1½) continue to keep us busy, but happy.

Loretta Rich Kurland, 8822 Tidesebb St., Columbia, Md. 21045. My husband's district was part of the winning region that won the President's Award for Hershey Foods Corp. in

1974. I just spent a brief stay at Jefferson and was surprised to see all the changes being made. Our boys—Bobby age 8, David age 7, and Mark age 4, keep us busy with all their activities. All three are becoming quite good swimmers.

Mary Elizabeth Speicher Gillin, 26 E. Langhorne Ave., Haver-town, Pa. 19083. My husband, Jim, has just been accepted into the Doctoral Program in English at Indiana University of Penna. and has received an assistantship, so we will be moving there for a year.

Maureen Cassidy McKeever, 5050 Moultrie, Corpus Christi, Texas 78413. Settled in Corpus Christi, Texas; have 2 boys and 1 girl. John is practicing ortho-surg., enjoying the casual life of this city by the sea.

1964—Elizabeth Reed, 2038 Paradise Dr. #2, Tiburon, Calif. 94920. Have moved to California this year. I am working at Un. of California, San Francisco as head nurse of Clinical Perfusion in Cardiac Surgery. Also, I have been re-appointed as Chair person of the Editorial Committee for AORN Journal.

Barbara Nase Anderson, 204 E. School Lane, Prospect Heights, Ill. 60070. My husband is currently the Administrative Assistant to the Chief of Staff—V.A. Research Hospital, Chicago. Cheryl is 2½ and attending nursery school 2 days a week while I work in the ICU-CCU at Holy Family Hospital.

Penelope Ann Jones McAlees, 106 Neville Lane, Oak Ridge, Tn. 37830. Husband, David, received his Ph.D. in Nuclear Engineering from Un. of Wis., Madison. Presently employed by Exxon Nuclear Co. We will be settled in Oak Ridge for a while. I am working at the Oak Ridge Hospital relieving the night and day supervisors.

Carol Parzniewski Teplick, 18 Montvale Rd., Wellesley, Mass. 02181. We moved back to Wellesley after two lovely years in Hawaii. Steve is back at Boston City Hospital. I am unemployed for a while. Jenny is 3 years old and we are expecting our second child in July.

Jeraldine J. Marasco Kohut, 110 S. Bedford St., Carlisle, Pa. 17013. Currently Supv., Special Care Unit, Carlisle Hospital, Carlisle, Pa., and completing studies for B.S. degree in Nursing, Elizabethtown College. Husband, Sylvester Kohut, Jr., Ph.D., is an Assistant Professor of Education and Coordinator of Teacher Education at Dickinson College, Carlisle, Pa.

Carol Bailey Miller, Box 85, Columbia Cross Roads, Pa. 16914. We have lived in Columbia Cross Roads 5 years now and our old house which had been vacant for 22 years is finally looking like a home. Our children: Marty 8, Kara 4, Chris 3, love it here. (Written May 1974).

Joanne Ronalds Miller, 319 Lobb Ave., Pen Argyl, Pa. 18072. Daughter, Joyce Ann born 1/13/75; Kelly Ann now age 3½ years. We are very happy with our family!

Dorothy Nuttall Stelzner, 309 Stonecrest Drive, Dewitt, N.Y. 13214. My husband, Dennie, has recently been promoted to Assoc. Prof. in the Neuro-Anatomy Dept. of Upstate Medical Center and thoroughly enjoys teaching first year medical students. My children, Matthew 5 and Mark 3, keep me happy and busy as does my new home. I am also teaching Lamaze classes in Syracuse in preparation for a job in Obstetrics when my children are both in school. Hi to all!

Virginia Magee Best, 221 Filbert Ave., Wilmington, Del. 19805. Promoted to Supv. of the Donor Room, Blood Bank, Wilmington Medical Center.

1965—Diana Lahti Hodges, 328 Sunset Drive, La Vale, Md. 21502. Husband, Royce, on staff of local hospital. I am enjoying small town life. Have my own horse at last and ride every day. (Written May 1974).

Dorothea Hamilton, 9231 N.E. 132nd Pl. Kirdland, Wa. 98033. Will receive B.S.N. from U. of Wash. summer 1974, have been inducted into Sigma Theta Tau, am still in Navy Nurse Corps, will be stationed at Naval Hospital Whidbey Island, NAS, Washington, after Sept. 1974. (Written June 1974).

Lois Russell Foxen, 246 W. Brentwood Ave., Orange, Calif. 92665. Haven't heard from me in about 5 years. I have been a resident of Southern California since July 1969 and married since Nov. 1969. My husband, Gary, is Ass't. Traffic Engineer in the Highway Engineering Dept. of the Automobile Club of Southern Calif. I am still actively working in dialysis—my current position being Clinical Nurse Specialist of the Hemodialysis Center of St. Joseph Hospital here in Orange. (Written June 1974).

Mary Bennett Kendrick, 45 Bonnymede, Pueblo, Colo. 81001. Recently accepted head nurse position on surgical floor at St. Mary-Corwin Hospital. (Written Sept. 1974).

Adrienne Lowe Daughenbaugh, 11 Forest Drive, Northfield, N.J. 08225. Craig, our second child was born 4/17/74 (8 lbs. 6 oz.) Our daughter, Lori, will be 4 years old 3/31/75. I am working part time in Rec. Rm. at Shore Memorial Hosp. and also teaching in a Prepared Childbirth Class at the hospital.

Barbara Ott Keller, 2383 Brookside Way, Indialantic, Fla. 32903. Our 4th daughter, Megan Colleen, was born Jan. 1975. Her sisters at that time were 5, 4 and 15 months. My husband, Basil, is busy in his 3rd year of neurosurgical practice. In our spare time we go sailing.

Sandra Schmidt Kolodziej, 17 Revere Rd., Monterey, Calif. 93940. My husband, John, is on the staff of the Naval Post Graduate School as an Instructor in the Dept. of Oceanography. The children, Christopher (8 yrs. in July), Kelly (6 yrs. in July), and Karen (3 yrs. in Oct.) are really growing up and continue to enjoy California. Mom hopes to take a part time job in the fall as soon as all my volunteer projects are completed.

Judith Jean Abbott Getz, 5434 Widgeon Dr., Wilmington, N.C. 28401. Don finished his residency at Jeff and is now practicing Orthopedic Surgery here. We are in love with the area and live 2 miles from the beach. It is unpolluted and the population is low. Finally we have lots of time as a family with David (4 years) and Travis (20 months). I am into lots of activities but no nursing—getting my N.C. license.

Margaret Schofield Frishmuth, 604 Surfside Dr., Pittsburgh, Pa. 15239. My husband, Ron, graduated with his PhD in Engineering from the Un. of Ill. in May 1974. In July our 4 year old son, Rusty, was joined by a sister, Pamela. In December Don accepted a new job with Alcoa, so we are now back in Pennsylvania. 1974 was a busy year!

Barbara Davis Schraeder, 736 South St., Dalton, Mass. 01226. We have settled in Western Mass. Husband, Paul, now Board certified in Neurology. Children, Maria age 6½ yrs. and Ellen 4 yrs. I will get my Masters degree in Pediatric Nursing from Un. of Wisconsin in May 1975.

Judith Larson Moyses, 49-26 Douglaston Pkwy., Douglaston, N.Y. 11362. Our second child, David Christian, was born Dec. 1, 1974. Jennifer is 2 years old and growing fast. I am still temporarily retired.

Lore Miles Eichfeld, 164 Ardmore Ave., Haddonfield, N.J. 08033. Family presently living in Jakarta, Indonesia. Bob is still with First National City Bank and we keep moving about. Andrew, age 5 and Diana age 7 months lend some continuity to our lives. Life here is very interesting—medical services surprisingly adequate.

Rita M. Mickey Mendel, 121 Know Blvd., Marlton, N.J. 08053. If any one is interested in having 10 year anniversary celebration, I'd be glad to have it here, probably the month of August. Please get in touch — 1 - 609 - 983-7037.

Elizabeth Ann (Betsy) Maule Zentner, 22516 Calipatria Drive, Topanga, Calif. 90290. Karl received a promotion with Atlantic Richfield, so we are now packing up our house and children (Eric 3½ yrs. and Christopher 1½ yrs.) for our move to Los Angeles as of May 1st, 1975.

Nancy Schraga Taylor, 340 Roberts Ave., Glenside, Pa. 19038. Think of 1962—65 often and the people I shared it with. Bless you all. Our address is just outside of Philadelphia. Would love to hear from you or better yet see you. I am leading a very active life with 2 sons—ages 6 and 3, part time job in Pedi, counseling breast feeding mothers, V.P. of child abuse organization. Ron and I are also involved in the marriage encounter movement which has made our lives just super.

Gail Elizabeth Wright Schultz, 321 Bellanca Rd., Bricktown, N.J. 08723. I have joined the ranks of full time employees—working in the O.R. at Jersey Shore Medical Center. Chuck's business "Bricktown Electric" is still going strong. I am still Pres. of the Junior Woman's Club and also taking courses through the hospital in continuing education. Kristine is in 1st grade and Jennifer is almost 4. Time flies!

Janet Carolyn Walker Respass, 2-3649 A East Cliff Drive, Santa Cruz, Calif. 95062. I plan to return to nursing after receiving a B.A. in Biology from the Univ. of California, Santa Cruz, in June 1975.

Mary Bennett Kendrick, 167 Bonnymede, Pueblo, Colo. 81001. I continue to work full time and remain interested in Intensive Care. Ken has recently accepted the position of Co-Pastor of Washington Park Church in Denver.

1966—Mona Kadushin Berch, 1201 S. Scott St., Arlington, Va. 22204. I am working in a psychiatric therapeutic community in a private hospital.

Suzanne Barclay, 6202 N. 16th St., Phoenix, Arizona 85016. August 1974 was promoted to Director of Clinical Nursing for OB/Gyn and Peds. Enjoy living in Phoenix.

Edna Carol DuCoin Moan, 1116 Linwood Ave., Callingswood, N.J. 08108. Spend most of my time being a homemaker for my husband and 5 year old son. I presently work part time private duty.

Judith L. Kennett Tracy, Rt. #1, Box 85, Whitewater, Wis. 53190. We proudly announce the adoption of twin boys, Joshua Howard and Aaron Robert. (Written July 1974).

Bonnie Ann Crofford, 45 Sullivan Rd., Wayne, Pa. 19087. By May 16th I should have met all the requirements (by challenge and course credits) of the first 2 years of a B.S.N. course at Gwynedd Mercy College and be eligible for the upper division (the last 2 years) and receive my Associate Degree. I have been on the Dean's list this past semester and have a cumulative average of better than 3.4 as a full time student while also working full time as 11 - 7 Supervisor at Cathcart Home, a Dept. of the Presbyterian—Un. of Pennsylvania Medical Center, Devon, Pa.

Mary Lou Smith, 6600 Warner #147, Huntington Beach, Calif. 92647.

Judith Kennett Tracy, Rt. #1, Box 85, Whitewater, Wis. 53190. Our twin sons keep us very busy and they are soon to be joined by a sister 3½ months from Viet Nam. We started 1975 with a bang on a tremendous trip to East Africa. It was a marvelous experience. I continue to work part time in obstetrics in our brand new hospital.

Judith Hagelgans Hoefle, 1818 Ferndale Ave., Ames, Iowa 50010. Husband is now Assistant Professor of Veterinary Surgery (small animal Orthopedics) and is gaining nation wide recognition for his success with hip prosthesis in small animals.

Barbara Shermer Ruehl, 531 Linden Ave., Doylestown, Pa. 18901. Second daughter, Carrie Patricia, born Jan. 7, 1975.

Lenora Weiner Schwartz, 1 Brentwood Court, Newtown Crossing, Newtown, Pa. 18940. We are happy to announce the arrival of our second son, Eric Ross, on August 10, 1974. Our son Gary is now 3½ years. Also in August 1974, Allen and I graduated from Temple University. Allen received his doctor

of Jurisprudence from the Temple School of Law and was admitted to the Pennsylvania Bar and Federal Bar. I received a Master in Education from Temple's College of Education. On April 16, 1975 we are moving to a new home at the above address.

Anite Schlegel Hess, 252 Chester Ave., Hatboro, Pa. 19040. Our first baby, Darren, was born on Jan. 14, 1974—through CEA training, it was a most wonderful experience. I am now taking a course to become a nursing mother's counsellor.

Martha Roe Russell, 26 S. Vernon St., York, Pa. 17402. Third child, Laura Ellen, born in October 1974.

Laura Lee Gelston Cunningham, 117 Oakland Ave., Audubon, N.J. 08106. I am Nurse Epidemiologist at Cooper Hospital in Camden, N.J.

Agnes Halliwell Kirschner, #2 Stephen Ave., Berlin, N.J. 08009. I am with a private duty registry, working part time; also attending Glassboro State College. Son, Tom is 7 years old and daughter, Janet is 5 years old.

1967—Karen Lawer Bedell, 1698 Westhaven Dr., San Jose, Calif. 95132. New arrival—Matthew Sean on 11/27/74—now have two sons. Patrick is 2 years old. John has finished his MRA and I am back in school full time for a B.S.N.

Carol Siegrist Woodruff, 1426 Avon Place, Pittsburgh, Pa. 15221. 2 daughters—ages 3½ and 6 months. Husband is resident in Ob/Gyn at Univ. of Pittsburgh.

Sharon Creamer Murphy, 2850 Sandyford Ave., Phila., Pa. 19152. Kevin Joseph born at T.J.U.H. Dec. 2, 1974.

Jill L. Simpson Bower, 93 Wellington Blvd., Wyomissing, Pa. 19610. Two boys—Johnnie 3 years; Billy 1 yr.—keep us busy!

Rita Haedel Becchetti, 42 Karen Drive, Mahwah, N. J. 07430. Husband, Stan, made Assist. V. Pres. of Garvin Bartel Corp. in New York City. I am working at Neuro Inst. in N.Y.C. part time and attending college part time.

Eileen Hansen Killough, 17 Bouchard Ave., Brunswick, Maine 04011. Jim will be separating from the Navy in September. Our plans are uncertain, but we hope to return to Penna. to live.

Linda Goodman, 33 Argyle Rd., Arlington, Mass. 02174. I received my masters degree in nursing at Boston University and am a nursing supervisor at Childrens' Hospital in Boston. Linda L. Strega Lauria, 127 Center Ave., Terre Hill, Pa. 17581. Regretfully mention the death of my husband last June 1974—due to renal failure. We had been doing home dialysis for 3 months. I still work in my father-in-law's office—general practice—my husband had been a partner.

Catherine Prentice Reynolds, 3613 Bellaire Place, Phila., Pa. 19154. Tom and I have two sons, Tommy and Brian. I am working part time at Nazareth Hospital and attending college part time at Holy Family College.

Sally Higham Fenlin, 836 Bryn Bawr Ave., Narbeth, Pa. 19072. Brian Taylor 3 years. Kelly (girl) born Nov. 18, 1973.

Doris C. Labbe Silance, 6A Alma Ave., Madison, N.J. 07940. Married 5 years; daughter, Kristie is 4 years old. Husband is a carpenter. I work at Morristown Med.—assistant head nurse.

Dianne Jakabein Perkins, Dependents Mail—Section—Box 916, FPO, Seattle, 98762. I arrived in Japan with my family on Jan. 1, 1975, where we will be stationed for 2 years. My husband is the Assistant Navigator aboard an aircraft carrier—home ported in Yokosuka, Japan. We have enjoyed many fascinating experiences already and look forward to our travels in the orient!

Deidre M. Watkins Blank, 1016 Spruce St., Philadelphia, Pa. 19107. Mike will finish doctorate studies in physiology by December and begin his post doctoral fellowship. I am presently working on the faculty in the Department of Baccalaureate Nursing at Jeff.

1968—Mary E. Squires Getz, R.D. #2, Box 10 Q, Dushore, Pa. 18614. Bob (my husband) and I had our first child born 12/18/74, named Jesse Theodore: 5 lbs, 3 oz., 17¼ inches; born about 5 weeks early. Had breathing trouble at first; doing well now.

Eileen Gannon Fagani, 5 Kuhn St., Somerset, N.J. 08873. We moved to New Jersey recently and my husband is working for the Anaconda Company in N.Y. City as Manager of Capitol Expenditures. I am working at Somerset Hospital as Supv. of CCU and ICU.

Halina Piekarska Warmbrod, 280 Stonehaven Cove, Jackson, Tenn. 38301. Jim is practicing orthopedics here in Jackson. We are very happy and expecting our third child in June. Our girls are Stephanie, age 4 and Monica, age 2½.

Bonnie Inghram Siegrist, 4608 Carondezet, New Orleans, La. 70115. Husband practicing attorney. Have two sons—Brett 3 yrs. and Todd—1 year. I continue to work part time at local hospital.

Beth Korin Sherr, 23 Ridgway St., Mt. Holly, N.J. 08060. I am working as a public health nurse with pregnant addicts and their newborns. My husband and I recently purchased our first home—it's 113 years old with eight bedrooms and we are having fun filling it up with antiques.

Carol Cohen Leventhal, 225 Welsh Hill Rd., Clarks Summit, Pa. 18411. My husband, Jeff, and I have two children; Scott will be 2 years old and Cari is going to be a year shortly. We recently bought a home and enjoy it very much. I am not working at present since our babies keep me too busy.

Virginia Bozarth Waldron, 5245H Broadway, APO SEA, WA. 98737. Our daughter, Victoria Lynn, was born April 22, 1974. Bob will receive his MBA from the Univ. of Alaska this May. In June we will be leaving Alaska to return to civilian life.

Mary Ann Taraskas, 1020 Spruce St., Phila., Pa. 19107. Will receive B.S.N. from Univ. of Penna. 8/75 and start in Master's program at Univ. of Penna. 9/75.

Shirley Dubis Poling, 6826 Horrocks St., Phila., Pa. 19149 (Temporary address). Our family is growing, Michael is now 5 years old and our daughter, Amy, was born 5/5/74. Due to my husband's (Jim) job as a sales representative, we will be moving to Baltimore, Md., this spring. For the last 2 years I have been working as an operating room nurse.

Margaret Ann Browne Kern, 19 Ashlawn Rd., Malvern, Pa. 19355. We had our 3rd child, Peter Michael, on March 26, 1974 and #4 is due in Oct. of '75. My husband, George, has become board certified in Pediatrics and he expects to take his Allergy boards in October. He started his own practice in September of 1974, limited to pediatric allergy and clinical immunology.

Sandra Payne Kenton, 54 Lakeside Rd., Devon, Pa. 19333. Daughter, Adrienne Danielle, born 1/8/71; Son, Brian Michael, born 12/15/74. Husband, Dr. Edgar J. Kenton III, will be obtaining a partner in July. Busy working with Service League of Lankenau Hospital. Love to hear from Cathy Lucas and Carolyn Kenna, Ruth Montgomery, Cathy Lugonski, and everyone!

Catherine Mary Mat Dirr, 10 Virginia Ave., Palmyra, N.J. 08065. Retired from Jefferson—for baby. Working at present as a substitute school nurse for Delran, N.J. Township.

Patricia A. Moffitt Frank, R.D. 1, Waynesboro, Pa. 17268. I am working part time in Coronary Care Unit of our 100 bed local hospital.

1969—Marilyn Guidi Rouke, 924 Mill St., Phillipsburg, N.J. 08865. Have beautiful baby girl born Sept. 17, 1974—Catherine Marie.

Marie Seebauer Panebianco, 242 Tilford Rd., Somerdale, N.J. 08083. Unchanged since last year.

Mary Kristina Hancock Reede, 212 W. High St., Apt. #7, Bellefonte, Pa. 16823. I will be married on March 15, 1975 to Lannie L. Reede. Presently working for two cardiologists as office nurse. Do public speaking and am very active with the American Cancer Society.

Linda Barbour, 102 C Haddon Hills, Haddonfield, N.J. 08033. Living and working in Philadelphia; student at Penn as of this year, working on B.S.

Nancy Loury Argonish, 825 Raines St., Scranton, Pa. 18509. My husband, Michael, will be completing his electrical apprenticeship in June 1975.

Annie Eldredge Kahn, 2147 "O" St., N.W. #207, Washington, D.C. 20037. Joel has transferred from the Treasury Dept. to the U.S. Export Import Bank. I was promoted last August to Assistant Nurse Clinician at George Washington University Emergency Room.

Caroline Brunt Moriuchi, Fellowship Rd., Moorestown, N.J. 08057. I am helping my husband, Fred, with his first business. Lakoski, our son, is two and a very happy and good boy!

Kathleen Shanahan Huffman, 15 Euclid Ave., Merchantville, N.J. 08109. I am now employed part time as a staff nurse at West Jersey Hospital in Camden, N.J. My husband has 2 more years of evening school at Drexel then he will be an engineer.

Sandra Ramsey Bauer, 195 Belair Rd., Warminster, Pa. 18974. Had first child—Meridith Ann born July 13, 1974 and have been "retired" from nursing since.

Carolyn Ruth Brown Eberhart, 528 N. Muhlenberg St., Allentown, Pa. 18104. Allentown-Sacred Heart Hospital Center—Neurology-Neuro-surgical Unit.

Dolores T. Hughes, 1525 E. Alcott St., Phila., Pa. 19149. Awarded Clara Melville Scholarship for Fall '75 from the Alumnae Association.

Kay Hitchens Jennings, R.D. #1, Box 285B, Milton, Del. 19968. I am now working part time on a Medical Surgical area. Robbie and Krista are now 3 and 2 years old and growing up too fast.

Linda Murray Croasdale Eickhoff, 1190 Cambridge Rd., Warminster, Pa. 18974. Our daughter, Rebecca, was born in Oct. 1973 and is keeping us busy. I love every minute of my full time job as housewife and mother.

1970—Gail A. Johnston Gallagher, 529 E. Wadsworth Ave., Phila., Pa. 19119. Our first son, Colin William, was born on April 10th, 1974. He weighed in at 8 lbs. 15¼ oz. was born at Jeff. I am working nights part time at Roxborough Memorial Hospital, am still going to school. I should receive my B.A. in early 1976. My husband, Tom, will graduate from law school this June. Our son has become the high point of our lives and is a constant source of joy.

Sandra Clark Hall, 94 Ridgelawn Rd., Reisterstown, Md. 21136. Working part time in general operating room, but will be leaving shortly as we expect the birth of our first child in June.

Carol Ann Evans Phillips, 17 Summer St., Rochester, N.H. 03867. Our daughter, Haren Lynn, was born Feb. 7, 1975; Scott is now 15 months and gets cuter every day! We are enjoying parenthood! Dave will be finished with his PhD this summer—he is now job hunting. I am working ICU—CCU and otherwise keeping real busy.

Suzanne Peters McLean, P.O. Box 583, Havertown, Pa. 19083. Finally married Frank in June 1974 and have recently purchased a house in East Lansdowne. Still head nurse in the nursery at Pennsylvania Hospital.

Gini-Ann Moyer Scott, 437 State Street, Coopersburg, Pa. 18036. Now all settled in a house. Gregg enjoys architecture. Jenny is quite a character (2 yrs.) and we are all enjoying John who is 3 months old. Love to hear from class mates!

Linda Hook Garbrecht, 105 W. Cedar Ave., Oaklyn, N.J. 08107. Married Oct. 26, 1974. Fred became Supv. of County Fire and Ambulance Communications Center—very happy in our new home.

Bonnie Schultz Pizzutillo, 14 Barberry Place, Wilmington, Del. 19810. For one year, I have been managing a group of R.N.'s who perform insurance exams in Delaware. Beginning July 1975 we will be making our home in Lakenheath, England for three years as my husband completes his military duty. We have three children, Lara age 6, Peter age 4½ and Amy age 2. We all are excited about our up-coming adventure in Europe.

Phyllis Nice Anders, 725 Derstine Ave., Lansdale, Pa. 19446. I remain a head nurse of a medical-surgical unit at Montgomery Hospital, Norristown, Pa.

Cynthia Grabowski, 522 Blue School Rd., Perkasie, Pa. 18944. Currently a Political Science Major at St. Joseph's College and employed at P.G.H.

Phyllis Pasquini Randazzo, 35 Meadow Way, Red Bank, N.J. 07701. Hi to all my classmates! We have just finished two years in the Air Force in Alexandria, La. and will be moving to Red Bank, N.J. this July where Vince will be joining a medical group. We have a little girl, Paula, age 2½.

1971—Grace Ann Spena, 2551 S. Sartain St., Phila., Pa. 19148. I am presently head nurse on a 37 bed surgical unit at the Medical College of Pennsylvania Hospital.

Lynn Streeper, 2327 Haverford Rd., Ardmore, Pa. 19003. Staff Nurse at Phila. College of Osteopathic Medicine — ICU - CCU.

Kathryn Van Dyke Hayes, 271 S. Washington St., Wilkes-Barre, Pa. 18702. (Written August 1974). Awarded Bachelor of Science Degree in Nursing May 1974 from Temple University. Received the Temple University President's Scholar Award, Certificate of Merit, for Distinguished Scholarship, graduated magna cum laude. And at graduation exercises was awarded the Temple University College of Allied Health Professions, Academic Achievement Award for the highest academic average in the college. Promoted to assistant head nurse at Temple University Hospital in June, on the neurosensory unit. (Written March 1975) Along with information I sent last year for the Alumnae Association Bulletin—for example—my graduation from Temple University, my awards, etc., please note that this was May 1974. In addition to all of that, could add: I was married to Neal A. Hayes, Jr. in November 1974 and now I am an instructor in the Dept. of Nursing at Wilkes College, Wilkes Barre, Pa. I am also working toward my masters degree part-time.

1972—Nancy Shaffer Bodner, 1231 Penna Ave., Pine City, N.Y. 14871. There was a misprint in the Alumnae Bulletin last year when our marriage was announced—you printed I married Benjamin Bodner, M.D.—my husband is not a medical doctor, he has his Pharm D. in pharmacy (Doctor of Pharmacy).

Donna Monroe Phelps, 807 Eldridge Rd., Fairless Hills, Pa. 19030. I am a part time nurse; part time student; full time mother. Larry and I have a new daughter, who keeps us busy. I am also working on my degree in Nursing Administration.

Margaret Van Dyke Beattie, Box 193D Sunnyhill Ave., Williamstown, N.J. 08094. Still working 3-11:30 in Emergency Room at Jeff. We moved to our new home on 1 1/2 acres in Williamstown, N.J. on Nov. 1974. Husband, David, is staff pharmacist at Newcomb Hospital in Vineland, N.J.

Denise Auerbach Wychowanec, 216 W. Clements Br. Rd., Runnemede, N.J. 08078. Attending Pediatric Nurse Practitioner Program at Johns Hopkins Hospital. Working as a P.N.P. at Einstein (Daroff).

Kathleen Konrad Smith, 903 Manning, Phila., Pa. 19107. I am presently working as a Patient Care Coordinator at Pennsylvania Hospital. I will be marrying Mark Smith on May 4th of this year. Mark is a 3rd year medical student at Jefferson.

Mary Scott, 1223 Spruce St., Phila., Pa. 19107. Will graduate from Cedar Crest College, Allentown, May 25th, 1975, with B.S. in Cooperative Nursing.

1973—Catherine H. Aukerman, 17 Manor, Claymont, Delaware 19703. Returned to school full time to Univ. of Delaware College of Nursing to obtain B.S.N.—work part time.

Janet Welsh, 1817 Stanwood St., Phila., Pa. 19152. March 1, 1975 promoted to advanced staff nurse in Star-Thompson.

Shelar Hoberman Luber, Park Drive Manor B713, Phila., Pa. 19144. Married in Sept. 1974 to a 2nd year osteopathic medical student.

Kate Felix, 3962 Jewell St., San Diego, Calif. 92109. (Permanent address—371 E. Glewn Rd., Apt. 6, Hershey, Pa. 17033). I am now a Navy Nurse stationed at the largest military hospital in the world—Nav. Reg. Med. Cen.—San Diego, Calif.

1974—Denise Boyd, 1949 Split Rock Drive, Lancaster, Pa. 17601. Work as a staff nurse 3-11 P.M. at Lancaster General Hospital in Intermediate Care Unit.

SCHOOL OF NURSING (DIPLOMA PROGRAM) GRADUATES

CLASS OF 1975

Dale Ann Barraclough
4232 Disston Street
Philadelphia 19135

Maryanne Bartoszek
589 Port Indian Road
Norristown, Pa. 19401

Nancy Jane Bauer
5726 N. Marshall St.
Philadelphia 19120

Denise Eileen Bertram
5133 Arbor Street
Philadelphia 19120

Linda Susan Bingaman
606 Belmont Avenue
Laureldale, Pa. 19605

Diane Marie Blubaugh
3755 S. W. 319th St.
Federal Way
Washington, D. C. 98002

Mary Josephine Bowes
4344 Woodland Avenue
Drexel Hill, Pa. 19026

Elizabeth Boyle
1909 McKee Avenue
Deptford, N. J. 08096

Donna Byrne
878 Brill Street
Philadelphia 19124

Lynda Ann Carberry
3409 Wellington Street
Philadelphia 19149

Dava Smith Carlson
712 Broadway, Apt. C-4
Westfield, N. J. 08093

Marie Agnes Casper
6421 Paschall Ave.
Philadelphia 19142

Gloria Lynn Christopher
Strawberry Avenue
Vineland, N. J. 08360

Eleanor Costello
817 Gay St.
Phoenixville, Pa. 19460

Florence Louise Cox
813 Johns Road
Cherry Hill, N. J. 08034

Carol Jean Craven
Levittown, Pa. 19055
12 Spiral Lane

Dorothy Marie D'Angelo
806 Longshore St.
Philadelphia 19111

Helen Lee Davis
28 Creston Ave.
Audubon, N. J. 08106

Debra Elaine Deame
9 Hargrove Lane
Willingboro, N. J. 08046

Patricia Ann Dick
208 Park Avenue
Collingswood, N. J. 08108

Loretta Marie Di Nardo
315 N. Bobbin Mill Lane
Broomall, Pa. 19008

Carol Ann Dougherty
218 Swedes Run Drive
Delran, N. J. 08075

Jane Ann Dugan
521 W. Byberry Road
Philadelphia 19116

Patricia Ann Ellis
R. D. #1
Watsonstown, Pa. 17777

Joyce Lynn Ettenger
108 Highland Parkway
Levittown, Pa. 19056

Judith Ann Ferraro
404 Acorn Road
Rancocas Woods N. J. 08060

Mary Genevieve Fitzgerald
18 Chapel Avenue
Merchantville, N. J. 08109

Kathleen Ann Freiling
105 Harmony Road
Levittown, Pa. 19056

Debra Ann Friedman
10867 Academy Road
Philadelphia 19154

Bonnie Michele Gaymon
5216 Gainor Road
Philadelphia 19131

Kathleen Gaynor
1021 Cornell Avenue
Drexel Hill, Pa. 19026

Cynthia Ann George
3213 Sharon Lane
Norristown, Pa. 19403

Catherine Mary Glavey
239 Blythe Ave.
Drexel Hill, Pa. 19026

Carole Lynn Grimmie
393 Franklin Ave.
West Berlin, N. J. 08091

Barbara Jean Hamilton
770 W. Church Road
Elkins Park, Pa. 19117

Debra Mary Hamlett
11 LaGorce Blvd.
Burlington, N. J. 08016

Amy Irene Harrison
515 Falkirk Road
Wilmington, Del. 19803

Mary Veronica Howell
3619 Bandon Drive
Philadelphia 19154

Jane Elizabeth Husband
22 Galbraith Road
Norristown, Pa. 19401

Frances Ellen Johnston
103 South 21st St.
Philadelphia 19103

Ruth Anna Keers
861 Sycamore Drive
Lansdale, Pa. 19446

Cynthia Ann Kiersnowski
10 Berkshire Road
Old Bridge, N. J. 08857

Regina Ann King
3377 Holme Avenue
Philadelphia 19114

Nancy Klekotka
122 Washington Ave.
Milmont Park, Pa. 19033

Anne Marie Lenhardt
4121 Nottingham Way
Trenton, N. J. 08690

Susan McCullough
4 Stanley Avenue
Merchantville, N. J. 08109

Joanne McLaughlin
9041 Convent Ave.
Philadelphia 19136

Marian Maguire
3130 Memphis St.
Philadelphia 19134

Barbara Gail Margolin
871 W. Oak Road
Vineland, N. J. 08360

Deborah Anne Marple
12 E. Wissahickon Ave.
Flourtown, Pa. 19031

June Allyn Matthews
Buchert Road, R. D. #4
Pottstown, Pa. 19464

Janet Elizabeth Moore
Old Salem Road
Thorofare, N. J. 08086

Cheryl Ann Mueller
158 Blue Ridge Drive
Levittown, Pa. 19057

Lee Therese Nimmer
187 Chickahominy Trail
Medford Lakes, N. J. 08055

Theresa O'Brien
729 Earp Street
Philadelphia 19147

Sue Ellen Orr
501 Lexington Drive
Cinnaminson, N. J. 08077

Linda Jane Owens
4233 Markland St.
Philadelphia 19124

Joyce Palczewski
3145 Aramingo Ave.
Philadelphia 19134

Beth Ann Phillips
221 56th Street
Avalon, N. J. 08202

Judith Ellen Phillips
1721 West High St.
Haddon Heights, N. J. 08035

Sarah Helene Plumly
6 Garden Lane
Levittown, Pa. 19055

Donna Marianna Ranieri
601 College Ave.
Haverford, Pa. 19041

Mary Elizabeth Reustle
6647 Montague St.
Philadelphia 19135

Eileen Rice
8619 Bridle Road
Philadelphia 19115

Susan Patricia Riffin
1802 Arlene Drive

Wilmington, Del. 19804
Ethel Marie Roberts
5245 Sylvester St.
Philadelphia 19124

Therese Scanlon
1108 Concord Ave.
Drexel Hill, Pa. 19026

Anna Marie Schmidt
2421 Chestnut Hill Drive
Cinnaminson, N. J. 08077

Barbara Ann Scott
1728 No. Dover St.
Philadelphia 19121

Brenda Joy Scott
413 Edgeboro Drive
Newtown, Pa. 18940

Germaine Elsie Scott
17 Kilmer Drive
Trenton, N. J. 08638

Sherrie Lynn Seward
Paper Mill Apartments
3-A Wharton Drive, Apt. 8

Newark, Del. 19711
Eileen Skwarek
308 Wiltshire Road
Upper Darby, Pa. 19082

Deborah Ann Smith
5 Sherwood Lane
Aston, Pa. 19014

Shelley Snyderman
3170 So. Uber St.
Philadelphia 19145

Rebecca Myra Solomon
504 McClellan St.
Philadelphia 19148

Anne Bernadette Spohrer
4546 Shelmire Ave.
Philadelphia 19136

Nora Ann Stockmann
Pemaquid Point
Maine 04561

Sara Ellen Sumner
5516 Wheeler St.
Philadelphia 19143

Margaret Rita Timm
524 School St.
St. Marys, Pa. 15857

Maria Triolo
2314 South 21st St.
Philadelphia 19145

Patricia Ann Tuno
Sunset Road
Burlington, N. J. 08016

Honor Jardine Watters
Box 509-A, R. D. #1
Malvern, Pa. 19355

Barbara Jean Webb
309 Tee Road
Glenside, Pa. 19038

Jill Christine Worrall
859 Rathton Road
York, Pa. 17403

In Retrospect -- 50 Years Ago

JEFFERSON
 MEDICAL COLLEGE HOSPITAL
 TRAINING SCHOOL for NURSES

Graduation Exercises

May 14, 1925

8:00 P.M.

Program

Music

Presiding Officer

MR. VAN HORN ELY

Board of Trustees

PRAYER REV. ANDREW MUTCH, D.D.
 Bryn Mawr Presbyterian Church

ADDRESS DR. FIELDING O. LEWIS
 Professor of Laryngology, Jefferson Medical College

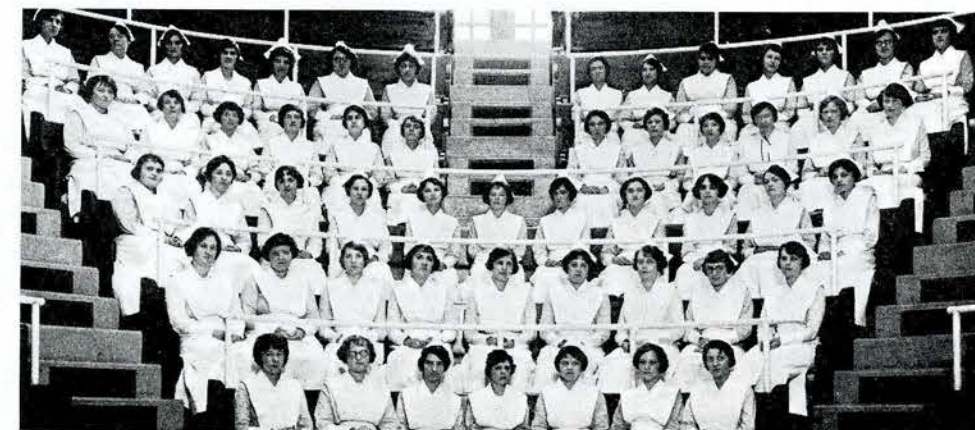
PRESENTATION OF DIPLOMAS..... HON. WILLIAM POTTER
 Board of Trustees

BENEDICTION

RECESSIONAL

Class of 1925

MARY E. ALBRIGHT	Pennsylvania
BERNICE MELBA BARNHART	Pennsylvania
EDITH MARGARET BASHORE	Pennsylvania
ANNA BERGNER	Pennsylvania
ANNA L. BRATTON	Pennsylvania
GLADYS ELIZABETH CALLANAN	Pennsylvania
ETHYLE G. CARPENTER	Pennsylvania
LILLIE ELLEN DILLIARD	Pennsylvania
HAZEL M. DUFFY	Pennsylvania
ELIZABETH H. FARQUHAR	Pennsylvania
MAUD W. GANTZ	Pennsylvania
ELIZABETH C. GEORGE	Pennsylvania
HELEN ELIZABETH GILBERT	Pennsylvania
SARA E. GILBERT	Pennsylvania
MYRTLE GOLDBERG	Pennsylvania
ALVERTA KATHLEEN HAINES	Pennsylvania
MILDRED GLADYS HAMMOND	Pennsylvania
ELSIE HAUCK	Pennsylvania
DELILAH T. HENDRICKS	Pennsylvania
ANNA C. HOWERTER	Pennsylvania
ALICE PEARL KELLY	Pennsylvania
MARY ANN KIMBLE	Pennsylvania
A. PAULINE KNAPP	Pennsylvania
MILDRED LETITIA KROUPA	Pennsylvania
ETHEL LLOYD	Pennsylvania
CLARA ISABEL LUCKSINGER	Pennsylvania
MAFALDA G. MARQUARDT	Pennsylvania
MARGARET MARY MacDONALD	Pennsylvania
MARGARET MacGREGOR	Quebec, Canada
BARBARA M. McCOY	Pennsylvania
MARY A. McKINSTRY	Pennsylvania
DELLA IRENE OWENS	Pennsylvania
MARIAN LIVINGSTON ROBINSON	Pennsylvania
MARY R. SCANLIN	Pennsylvania
E. ELIZABETH SCOTTON	Delaware
MARJORIE JEANNE SECOR	Pennsylvania
HONOR PLEASANT SHEARER	Pennsylvania
NORA IRENE SMITH	Pennsylvania
ELIZABETH STEWART	Pennsylvania
MARIAN H. STYVER	Pennsylvania
ROWENA EVELYN WETMORE	Pennsylvania
M. ELIZABETH YOCUM	Maryland
MABEL C. YODER	Pennsylvania



CLASS OF 1925 — THEN

Recently the "Hundredth Clinic 1925" — a year book of the Hundredth Class of the Jefferson Medical College was donated to the Alumnae Association by Mrs. Marian Robinson Briggs, a member of the 1925 Nurses Graduating Class. In this issue the contents are labeled Book One, Book Two, etc.; Book Six is titled "The Nurses" with a drawing of a striding angel holding a small child in her left arm and a partially filled urinal in her right hand — with the inscription "1 2 3 4 5 6 7 ALL GOOD NURSES GO TO HEAVEN".

Below is a copy of the introductory article.

THE JEFFERSON MEDICAL COLLEGE HOSPITAL
TRAINING SCHOOL FOR NURSES

The Training School for Nurses has concluded its thirty-third year. During this period the school has been successful and prosperous. The first Commencement Exercises were held in the Old Clinical Amphitheatre in November, 1891, with five nurses receiving diplomas.

At this time the nurses received a few lectures given by the teachers of the College, and for practical experience many of them were sent out into homes to care for the patient, the physician being responsible for the nursing care. If the young nurse proved satisfactory she was retained; if not, she was succeeded by another who usually was anxious to make good and tried to do so.

Having few private rooms in the hospital, the nurses had little opportunity for private duty work or to be retained by the hospital for institutional work until 1907, when the main hospital was opened. It paved a new road and afforded many opportunities for enlarging the growth and bettering the facilities of the school. More student nurses were added, a consider-

able increase was made in the nursing staff, and students were no longer permitted to be sent out of the institution on cases, but received practical work in the wards and private floors. At the same time many subjects were added to the didactic course.

At the entrance of the United States into the war, it became urgent to increase the enrollment of the student nurses in order to meet the demands of the public and properly care for the patients coming into the hospital. Again the hospital has the same problem with the opening of the Samuel Gustine Thompson Annex, to increase the enrollment of the student nurses until at present time the school has one hundred and eighty-five student nurses. With the existing conditions, the capacity of the Nurses' Home located at 1012-14-16-18 Spruce Street filled, and the necessity of having additional room to care for student nurses, the Board of Trustees of the Hospital are having erected the first wing of a six story structure, which when entirely completed will accommodate three hundred persons.

The student nurses have many opportunities, the various subjects being taught by the teachers of the College and an instructress for practical and class work. A College Laboratory has been added which affords laboratory training in Dietetics and Chemistry. The Student Nurse has the advantage of ward supervision and comes in contact with many varied types of cases.

Upon completion of the three years' course in training many avenues are open to the graduates. Some are retained for institutional work, others engage in private duty, or Public Health, or Child's Welfare, while others seek industrial nursing. Schools and Colleges have recognized and appreciate the value of the services of the nurse.



BOOK VI
THE NURSES



CLASS OF 1925 — NOW

MARRIAGES

- 1925 Deliah Hendricks Naugle, to Lawrence E. Lloyd
1935 Ruth McCabe Thomas, to George B. Cropper
1948 Anita Hawthorne, to Thomas C. Garrett, Jr.
1949 Elsie Skvir, to Richard M. Nierle, M.D.
1956 Dorothy Puskar, to Wayne Laylor
1960 Joeann Guthrey, to Mr. Taylor
1963 Shelva Rinehart, to Thomas Walsh
1966 Judith Haffner, to Dennis Gries
Edith Kreider, to Kevin O'Brien
1967 Janice L. Osterhus, to Leslie A. Shipley, D.O.
Jacqueline Simons, to Daniel Alvarez, M.D.
1968 Dolores Crumlish, to Earl Brown
1969 Mary K. Hancock, to Lannie L. Reede
1970 Linda Hook, to Fred Garbrecht
Suzanne M. Peters, to Frank McLean
Janice Valentin, to Mr. O'Neil
1971 Kathryn Van Dyke, to Neal A. Hayes, Jr.
1972 Carol DiNubile, to Michael Anderson
Kathleen Konrad, to Mark Smith
Donna Wunsch, to Dirk Stuurup
1973 Cheryl Breder, to Warren Wenger
Helene Canney, to Robert Burgoon
Eugenie Goldfarb, to Zahan Green
Linda Heydt, to Joseph Quinn
Shelah Beth Hoberman, to Robert M. Luber
Donna C. Kee, to Dwight Townsend
Catherine Mikota, to John Branton
Margaret Young, to Roy Silvester
Phyllis Heller, to Steven Richman
1974 Katherine Gray, to Thompson R. Pyle
Wendie Jo Hunt, to Dennis McCole
Eileen R. Rocheleau, to William Arsenault

BIRTHS

- 1960 Carlyn Ressler Goepfert, Baby Girl
1964 Joanne Ronalds Miller, Baby Girl
1965 Judith Larson Moyse, Baby Boy
Adrienne Lowe Daughenbaugh, Baby Boy
Margaret Schofield Frishmuth, Baby Girl
1966 Judith Kennett Tracy, Twin Boys
Martha Roe Russell, Baby Girl
Barbara Shermer Ruehl, Baby Girl
Lenora Weiner Schwartz, Baby Boy
1967 Sharon Creamer Murphy, Baby Boy
Karen Lawer Bedell, Baby Girl
Carol Sirgrist Woodruff, Baby Girl
1968 Virginia Bozarth Waldron, Baby Girl
Shirley Dubis Poling, Baby Girl
Kay Hitchens Jennings, Baby Girl
Mary Squires Getz, Baby Boy
1969 Marilyn Guidi Rourke, Baby Girl
Sandra Ramsey Bauer, Baby Girl
1970 Carol Evans Phillips, Baby Girl
Gail Johnston Gallagher, Baby Boy
Gini-Ann Moyer Scott, Baby Boy
1972 Donna Monroe Phelps, Baby Girl

IN MEMORIAM

- 1911 Eleanor Smith Spear
1917 Florence M. Jones
1918 Elva Schoen
1920 Agnes Owl Madrano
1923 Rosa Diseroad
1925 Mary Kimble
1928 Lydia Clarkson
1932 Veronica V. Welsko
1936 Binnie Manges
1938 Lorraine Maciejewski Wallen
1940 Dorothy Schanley Somerville
1945 Phyllis Hartzell Smith (W. H.)
1945 Irene Larson Kessler (W. H.)
1946 Ruth Henney Warnock
1954 Constance Esterline McSurdy

CLASS ADDRESS LISTS

Class address lists will be available from the Alumnae Office Clerk-Typist, at a charge of \$2.00 per list. Enclose a long, self addressed, stamped envelope.

ALUMNAE BULLETIN

The Alumnae Bulletin will be sent automatically to all Association members, individuals who are not Association members may obtain a copy of the Bulletin upon request, at a cost of \$3.00 per copy. An order form will be mailed to all graduates in the Spring of 1976.

MAIDEN NAME — YEAR OF GRADUATION

Whenever you have occasion to write to your Alumnae Association, please use your first name, maiden name, then married name, and the year you graduated.

EXAMPLE: JANICE SMITH GREEN — 1972

Mrs. John Green makes it very difficult for the Association to locate your card in the files. You are urged to notify the Secretary of the Alumnae Association of any corrections, marriages, deaths or changes of address. Please help us keep errors at a minimum, and our files accurate.

CAP CHARMS

Jefferson cap charms are available in sterling silver and 14 carat gold. For information please write Betty Piersol or Margaret Summers, 1002 Spruce Street, Philadelphia, Pa. 19107.

ALUMNAE DAY — SECOND SATURDAY IN MAY (May 8, 1976)

CAPS

Jefferson caps may be purchased from the Marvin-Neitzel Corporation, 2016 Fifth Avenue, Troy, New York 12181. The minimum order is for three caps at a cost of \$2.45 each, plus a one dollar postage and handling charge.

Identification may be obtained by directing correspondence to the Director, School of Nursing, Thomas Jefferson University, 130 South Ninth Street, Eighth Floor, Philadelphia, Pa. 19107.

PINS

Jefferson pins may be purchased at J. E. Caldwell and Company, Chestnut and Juniper Streets, Philadelphia, Pa. 19107.

Identification may be obtained by directing correspondence to the Director, School of Nursing, Thomas Jefferson University, 130 South Ninth Street, Eighth Floor, Philadelphia, Pa. 19107.

TRANSCRIPTS

All requests for transcripts should be submitted in writing to the Director, School of Nursing, Thomas Jefferson University, 130 South Ninth Street, Eighth Floor, Philadelphia, Pa. 19107. Transcripts are sent only to institutions of higher learning. Requests should be submitted at least a month prior to the date needed, giving the name of the institution to which you want them to be sent. There is a \$2.00 fee for each transcript. Checks should be made payable to School of Nursing, Thomas Jefferson University.

