



Thomas Jefferson University
Jefferson Digital Commons

Department of Biochemistry and Molecular Biology Faculty Papers Department of Biochemistry and Molecular Biology

4-20-2015

Crosstalk between Desmoglein 2 and Patched 1 accelerates chemical-induced skin tumorigenesis.

Donna M Brennan-Crispi

Department of Dermatology and Cutaneous Biology, Department of Biochemistry and Molecular Biology, Sidney Kimmel Cancer Center, Thomas Jefferson University

Claudia Hossain

Department of Dermatology and Cutaneous Biology, Thomas Jefferson University, claudia.hossain@jefferson.edu

Joya Sahu

Department of Dermatology and Cutaneous Biology, Thomas Jefferson University, Joya.Sahu@jefferson.edu

Mary Brady

Department of Dermatology and Cutaneous Biology, Thomas Jefferson University, Mary.Brady@jefferson.edu

Natalia A Riobo

Sidney Kimmel Cancer Center, Department of Biochemistry and Molecular Biology, Thomas Jefferson University

See next page for additional authors

[Let us know how access to this document benefits you](#)

Follow this and additional works at: <http://jdc.jefferson.edu/bmpfp>

 Part of the [Oncology Commons](#)

Recommended Citation

Brennan-Crispi, Donna M; Hossain, Claudia; Sahu, Joya; Brady, Mary; Riobo, Natalia A; and Mahoney, M G, "Crosstalk between Desmoglein 2 and Patched 1 accelerates chemical-induced skin tumorigenesis." (2015). *Department of Biochemistry and Molecular Biology Faculty Papers*. Paper 86. <http://jdc.jefferson.edu/bmpfp/86>

This Article is brought to you for free and open access by the Jefferson Digital Commons. The Jefferson Digital Commons is a service of Thomas Jefferson University's [Center for Teaching and Learning \(CTL\)](#). The Commons is a showcase for Jefferson books and journals, peer-reviewed scholarly publications, unique historical collections from the University archives, and teaching tools. The Jefferson Digital Commons allows researchers and interested readers anywhere in the world to learn about and keep up to date with Jefferson scholarship. This article has been accepted for inclusion in Department of Biochemistry and Molecular Biology Faculty Papers by an authorized administrator of the Jefferson Digital Commons. For more information, please contact: JeffersonDigitalCommons@jefferson.edu.

Authors

Donna M Brennan-Crispi, Claudia Hossain, Joya Sahu, Mary Brady, Natalia A Riobo, and M G Mahoney

Crosstalk between Desmoglein 2 and Patched 1 accelerates chemical-induced skin tumorigenesis

Donna M. Brennan-Crispi^{1,2,3}, Claudia Hossain¹, Joya Sahu¹, Mary Brady¹, Natalia A. Riobo^{2,3}, Mÿ G. Mahoney^{1,2,3}

¹Department of Dermatology and Cutaneous Biology, Thomas Jefferson University, Philadelphia, PA, USA

²Department of Biochemistry and Molecular Biology, Thomas Jefferson University, Philadelphia, PA, USA

³Sidney Kimmel Cancer Center, Thomas Jefferson University, Philadelphia, PA, USA

Correspondence to:

Mÿ G. Mahoney, e-mail: My.mahoney@jefferson.edu

Natalia A. Riobo, e-mail: natalia.riobo@jefferson.edu

Keywords: Desmoglein 2, hedgehog signaling, Patched 1, basal cell carcinoma, squamous cell carcinoma

Received: February 04, 2015

Accepted: February 08, 2015

Published: March 24, 2015

ABSTRACT

Aberrant activation of Hedgehog (Hh) signaling is causative of BCCs and has been associated with a fraction of SCCs. Desmoglein 2 (Dsg2) is an adhesion protein that is upregulated in many cancers and overexpression of Dsg2 in the epidermis renders mice more susceptible to squamous-derived neoplasia. Here we examined a potential crosstalk between Dsg2 and Hh signaling in skin tumorigenesis. Our findings show that Dsg2 modulates Gli1 expression, *in vitro* and *in vivo*. Ectopic expression of Dsg2 on Ptc1^{+/lacZ} background enhanced epidermal proliferation and interfollicular activation of the Hh pathway. Furthermore, in response to DMBA/TPA, the Dsg2/Ptc1^{+/lacZ} mice developed squamous lesions earlier than the WT, Ptc1^{+/lacZ}, and Inv-Dsg2 littermates. Additionally, DMBA/TPA induced BCC formation in all mice harboring the Ptc1^{+/lacZ} gene and the presence of Dsg2 in Dsg2/Ptc1^{+/lacZ} mice doubled the BCC tumor burden. Reporter analysis revealed activation of the Hh pathway in the BCC tumors. However, in the SCCs we observed Hh activity only in the underlying dermis of the tumors. Furthermore, Dsg2/Ptc1^{+/lacZ} mice demonstrated enhanced MEK/Erk1/2 activation within the tumors and expression of Shh in the dermis. In summary, our results demonstrate that Dsg2 modulates Hh signaling, and this synergy may accelerate skin tumor development by different mechanisms.

INTRODUCTION

Desmosomes are multi-protein, cell-cell adhesion complexes critical for tissue integrity and function [1, 2]. Desmoglein 2 (Dsg2), the most ubiquitously expressed desmosomal cadherin, is found in all simple epithelia and select non-epithelial cells such as cardiomyocytes [3–5]. In the skin, Dsg2 is highly expressed in the hair follicles but is found only at a low level in the basal layer of the interfollicular epidermis [6]. The role of Dsg2 in tumorigenesis emerged with the findings that Dsg2 expression is highly upregulated in several epithelial-derived malignancies including basal cell carcinomas (BCC) and squamous cell carcinomas (SCC) [6].

Furthermore, we recently reported that ectopic expression of Dsg2 in the superficial epidermis renders mice more susceptible to tumor development [7].

The role of desmogleins in cell-cell adhesion has been well established [9]. However, recent work has recognized additional functions of desmogleins beyond the desmosomes. We previously demonstrated that Dsg2 enhances keratinocyte proliferation and survival, and activates mitogenic signaling cascades, including the MEK/Erk, PI3K/Akt and JAK/Stat3 pathways [7]. Furthermore, we established that Dsg2 interacts with caveolin-1, a key regulator of cell signaling [8]. Additionally, knockdown of Dsg2 in colon cancer cells inhibits proliferation by suppressing EGFR signaling [9].

Taken together, these data support the notion that Dsg2 may influence cancer development and progression, in part by regulating key signaling pathways that maintain skin homeostasis.

The Hedgehog (Hh) signaling pathway is another crucial regulator of skin homeostasis. Aberrant activation of the pathway in the skin is the causative factor of BCC, both sporadic and familial [12]. The hallmark of canonical activity is the activation of the Gli family of transcription factors [13]. Gli activation is negatively regulated by the tumor suppressor Patched 1 (Ptc1). In the absence of the Hh ligands, Sonic (Shh), Indian (Ihh) or Desert (Dhh) Hh, Ptc1 inhibits Smoothed (Smo), leading to processing of Gli2 and Gli3 to their repressor forms, which blocks target gene transcription. The Hh pathway is activated upon binding of a Hh ligand to Ptc1, which leads to derepression of Smo and activation of the Gli transcription factors. Importantly, both Gli1 and Ptc1 are targets of Gli transcription and serve as readouts of the Hh pathway.

In the normal skin, Hh signaling is high during specific stages of the hair follicle cycle, but undetectable in the interfollicular epidermis [14]. However, the Hh pathway is upregulated in all BCCs, either by loss of function of Ptc1 (PTCH1 in humans) or gain of function mutations of Smo [12]. Gorlin's syndrome, a condition in which patients develop hundreds of BCCs, is caused by PTCH1 haploinsufficiency, typically followed by subsequent somatic loss of heterozygosity (LOH) due to insults like UV irradiation [15]. The role of Hh signaling in SCCs is not well-defined, with only certain subsets displaying markers of Hh activation [16], though the Ptc1^{+lacZ} mouse model has shown increased susceptibility to UV-induced SCC formation [10]. This pattern of widespread upregulation of Hh signaling markers in BCCs and heterogeneous activation in SCCs is reminiscent of Dsg2. Interestingly, a number of cell signaling pathways regulated by Dsg2, including PI3K/Akt, MEK/Erk1/2 and JAK/Stat3, can synergize with the Hh pathway to stimulate Gli transcriptional activity [11, 12]. Based on this evidence, we proposed to determine if Dsg2 and Hh signaling cooperate in skin tumor development.

To explore the interaction between Dsg2 and Hh signaling we crossed two established animal models: Ptc1^{+lacZ} and Inv-Dsg2 mice. Our Inv-Dsg2 transgenic animals, which overexpress Dsg2 in the suprabasal layers of the epidermis under control of the involucrin promoter [8], are an established model for Dsg2-mediated squamous tumor development. The Ptc1^{+lacZ} mice are heterozygous for Ptc1, with one copy replaced with a functional *lacZ* gene that serves as reporter of pathway activation, since Ptc1 is a Gli-target gene. Though generated as a mouse model for Gorlin syndrome; unlike humans, these mice only rarely develop spontaneous BCC [13] with advanced age, but require additional hits such as UV or γ -irradiation which can induce loss of p53 [14], or to be bred into a

p53 null background to develop significant skin tumors [10]. Thus, the Ptc1^{+lacZ} mice serve primarily as reporters of Hh pathway activity, but are primed for skin tumor formation. Therefore, we crossed these two mouse models to determine if Dsg2 and Hh interact during chemical-induced tumor development. Our results suggest a synergistic interaction between Dsg2 and Hh signaling in the development of both SCCs and BCCs.

RESULTS

Dsg2 enhances canonical Hh signaling in mouse skin and in cultured keratinocytes

To determine the effect of Dsg2 on Hh signaling *in vivo*, we quantified expression of *gli1* and *ptc1* mRNA in the skin of 6 week-old Inv-Dsg2 transgenic mice and wild type (WT) littermates. Analysis by qPCR confirmed enhanced Dsg2 expression and revealed an ~7-fold increase in *gli1* and *ptc1* mRNA in the skin of Inv-Dsg2 mice (Figure 1A). As activation of the Hh pathway is a hallmark of hair follicles in anagen, we also normalized the *gli1* and *ptc1* Ct values to the anagen hair follicle marker *sox9* to confirm that the increase in Hh target genes was not secondary to an increased number of anagen follicles. Strikingly, normalization of *gli1* and *ptc1* to *sox9* resulted in an even higher upregulation of *gli1* and *ptc1* (~20 and 10-fold respectively) (Figure 1A); suggesting that the observed increase in *gli1* and *ptc1* could not be accounted for by an increase in hair follicle number or an alteration in the hair follicle cycle. Remarkably, expression of Shh at the transcript level was highly upregulated in the skin of Inv-Dsg2 mice (800-fold vs. WT), suggesting that it may account for increased Gli target gene expression *in vivo* (Figure 1B). Thus, overexpressing Dsg2 in the epidermis increases canonical Hh pathway activity *in vivo*.

To obtain further proof that Dsg2 levels regulate activation of the canonical Hh pathway, we utilized SCC-derived A431 cells stably expressing control (A431+shGFP) or Dsg2 (A431+shDsg2) short hairpin RNA [21]. Stable knockdown of Dsg2 was accompanied by a striking reduction of Gli1 (Figure 1C), suggesting that Dsg2 might stimulate canonical Hh signaling. To test whether this holds true in non-tumorigenic keratinocytes, we compared expression the Hh target genes *gli1* and *ptc1* in HaCaT cells transfected with shRNA to GFP (HaCaT+shGFP) or Dsg2 (HaCaT+shDsg2). Because HaCaT cells express very low levels of Gli1, that are not detectable at the protein level, only qPCR was used. Knockdown of Dsg2 resulted in a significant 50% decrease in *gli1* transcript levels compared to controls (Figure 1D). Altogether, these observations demonstrate that Dsg2 promotes canonical Hh signaling both *in vitro* and *in vivo*.

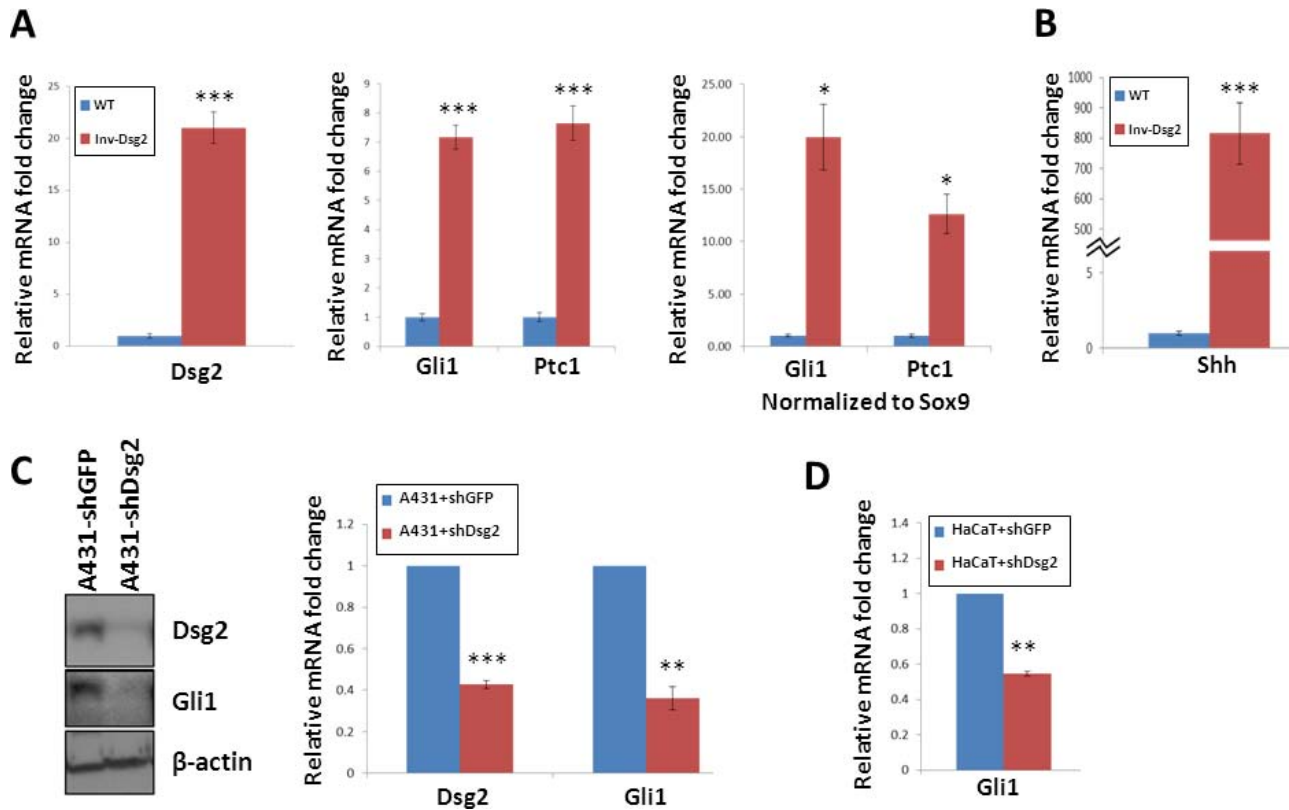


Figure 1: Dsg2 enhances Gli1 expression. A-B. qPCR analysis of 6-week old backskin from Inv-Dsg2 ($n = 8$) and WT ($n = 6$) mice. Samples normalized to internal control (GAPDH); in addition to control for follicles in the anagen stage of development, samples were normalized to Sox9. C. Western analysis of A431-shDsg2 and A431-shDsg2 lysates ($n = 3$), for Dsg2 and Gli1. Actin serves as a loading control. Densitometry measurements were completed using image J. D. qPCR of HaCaT-shDsg2 and HaCaT-shGFP control cells ($n = 3$). Samples were normalized to GAPDH. All data are shown as the mean \pm SEM; * $p < 0.05$, ** $p < 0.01$, *** $p < 0.001$; t -test.

Dsg2-mediated hyperproliferation is enhanced on the Ptc1^{+lacZ} background

To assess the biological consequence of the crosstalk between Dsg2 and Hh signaling, we bred our Inv-Dsg2 mice and the Ptc1^{+lacZ} reporter mice to generate Inv-Dsg2/Ptc1^{+lacZ} compound animals, single transgenic (Inv-Dsg2 and Ptc1^{+lacZ}) and WT littermates, which were born at the expected Mendelian rates. We measured epidermal thickness of the mice at different developmental stages (1–2 days, 6 weeks, and 3 months of age). Newborn mice appeared normal, with all genotypes exhibiting comparable epidermal thickness (Figure 2A). As we published before, by 6 weeks the Inv-Dsg2 mice showed signs of hyperplasia (Figure 2B). Strikingly, by 3 months of age the Inv-Dsg2/Ptc1^{+lacZ} compound mice exhibited statistically significant increased hyperplasia compared to their Inv-Dsg2 counterparts, while there was no difference in average epidermal thickness between WT and Ptc1^{+lacZ} mice (Figure 2C), suggesting that a Ptc1 haploinsufficiency allows for enhanced effects Dsg2 on skin homeostasis.

Next, we sought to determine if the increased hyperplasia resulted from defective terminal differentiation or enhanced proliferation. To assess significant defects on terminal differentiation, we analyzed the expression of cornified envelope markers. Immunofluorescent staining of loricrin revealed normal staining in the epidermis in all mice (Figure 2D). Additional cornified envelope markers, involucrin and filaggrin displayed similar results (data not shown), suggesting that the terminal differentiation proceeds relatively normally. While we cannot rule out more subtle effects on differentiation, this data suggests that impairment of terminal differentiation could not explain the enhanced skin hyperplasia of Dsg2/Ptc1^{+lacZ} mice. In contrast, BrdU incorporation revealed increased proliferation in the basal layer of the skin of Inv-Dsg2/Ptc1^{+lacZ} mice compared to Inv-Dsg2 and Ptc1^{+lacZ} or WT animals (Figure 2E). These results indicate that Dsg2-mediated epidermal proliferation is enhanced on the Ptc1^{+lacZ} background, and suggests a possible synergistic effect of the two signaling pathways, as there is no change in Ptc1^{+lacZ} animals compared to wild-type.

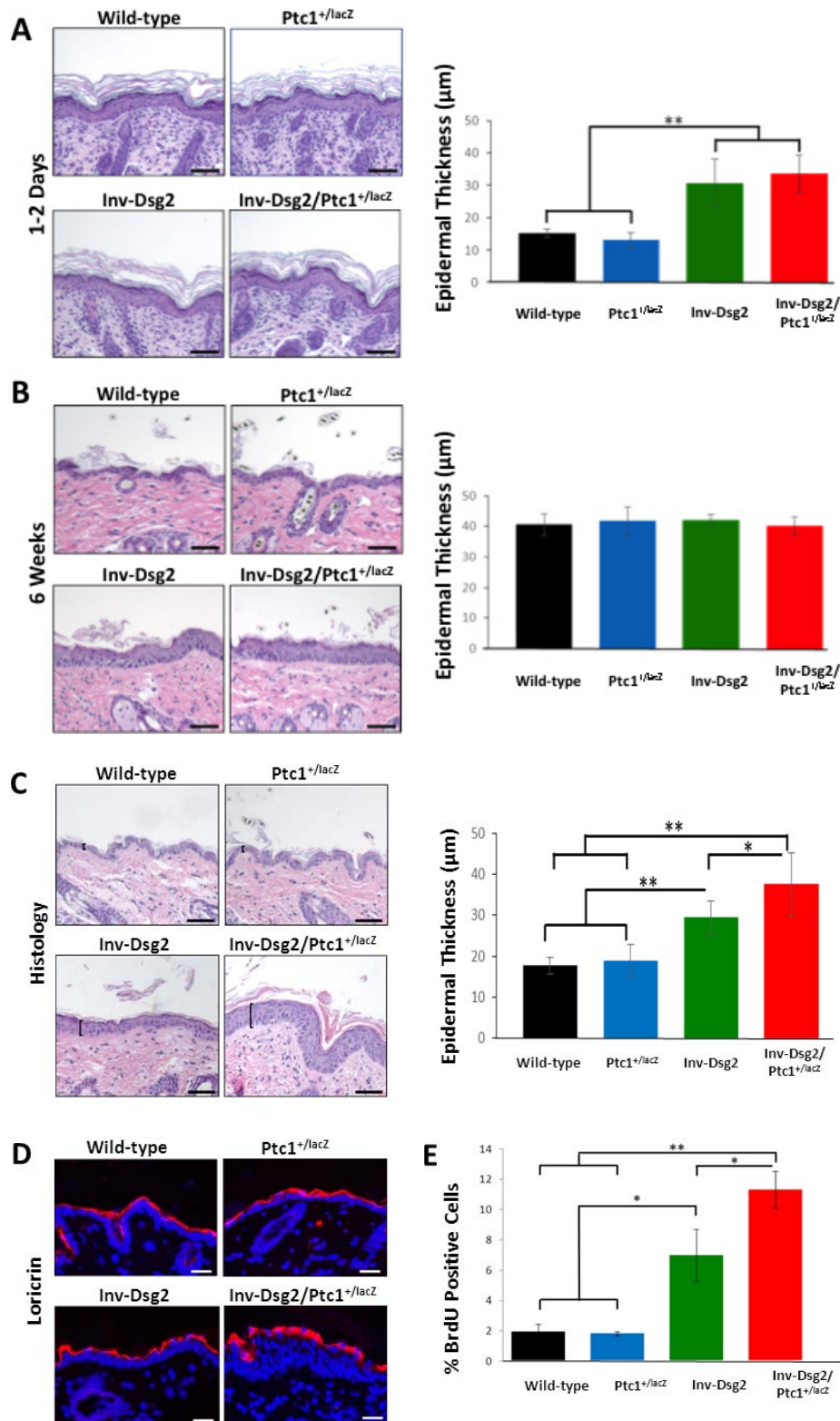


Figure 2: Inv-Dsg2/Ptc1^{+/lacZ} mice exhibit epidermal hyperproliferation. (A-C) Histological analysis of newborn mouse skin **A**. 6 weeks **B**. and 3-month **C**. mouse backskin. Epidermal thickness was measured as indicated by brackets. Graphical representation of average epidermal thickness is presented in microns. Newborn: WT ($n = 3$); Ptc1^{+/lacZ} ($n = 4$); Inv-Dsg2 ($n = 6$); Inv-Dsg2/Ptc1^{+/lacZ} ($n = 4$); 6 week: WT ($n = 5$); Ptc1^{+/lacZ} ($n = 2$); Inv-Dsg2 ($n = 5$); Inv-Dsg2/Ptc1^{+/lacZ} ($n = 5$); 3 month: WT ($n = 10$); Ptc1^{+/lacZ} ($n = 6$); Inv-Dsg2 ($n = 4$); Inv-Dsg2/Ptc1^{+/lacZ} ($n = 7$). **D**. IF of the cornified envelop marker loricrin (red); nuclei counterstained with DAPI (blue). **E**. Graphical representation of number of BrdU positive cells per 100 basal keratinocytes. WT ($n = 5$); Ptc1^{+/lacZ} ($n = 3$); Inv-Dsg2 ($n = 3$); Inv-Dsg2/Ptc1^{+/lacZ} ($n = 4$). The data are shown as the mean \pm SEM. * $p < 0.05$; ** $p < 0.01$; t -test. Scale bar = 50 microns.

Hh signaling is activated in the interfollicular epidermis of *Inv-Dsg2/Ptc1^{+lacZ}* mice

To investigate the origin of the phenotypic differences between the *Inv-Dsg2* and *Ptc1^{+lacZ}* crossed progeny, we evaluated the expression of the Flag-tagged *Dsg2* transgene and Hh pathway activity in the skin of all genotypes and control WT mice at three months of age. As expected, *Dsg2.Flag* expression was only detected by immunohistochemistry in *Inv-Dsg2* and *Inv-Dsg2/Ptc1^{+lacZ}* mice and was restricted to the suprabasal epidermis (Figure 3A). The X-gal staining which reports expression of *Ptc1-lacZ*, a marker of canonical Hh pathway activation, was detected only in mice harboring the *lacZ* reporter gene. Both *Ptc1^{+lacZ}* and *Inv-Dsg2/Ptc1^{+lacZ}* mice exhibited a comparable activation of the Hh pathway in

the dermal papilla of hair follicles (Figure 3B). Differences between *Ptc1^{+lacZ}* and *Inv-Dsg2/Ptc1^{+lacZ}* animals emerged when the interfollicular epidermis (IFE) was examined. The IFE is typically void of detectable Hh pathway activity, and indeed *Ptc1^{+lacZ}* mice showed little to no X-gal staining outside of the hair follicles. Increased Hh reporter activity was observed in localized regions of the IFE of the *Inv-Dsg2/Ptc1^{+lacZ}* mice (Figure 3C), indicating that *Dsg2* overexpression stimulates Hh signaling in keratinocytes *in vivo*.

Dsg2/Ptc1^{+lacZ} mice exhibit accelerated squamous tumor development

We previously demonstrated that the *Inv-Dsg2* mice were more susceptible to chemical-induced squamous

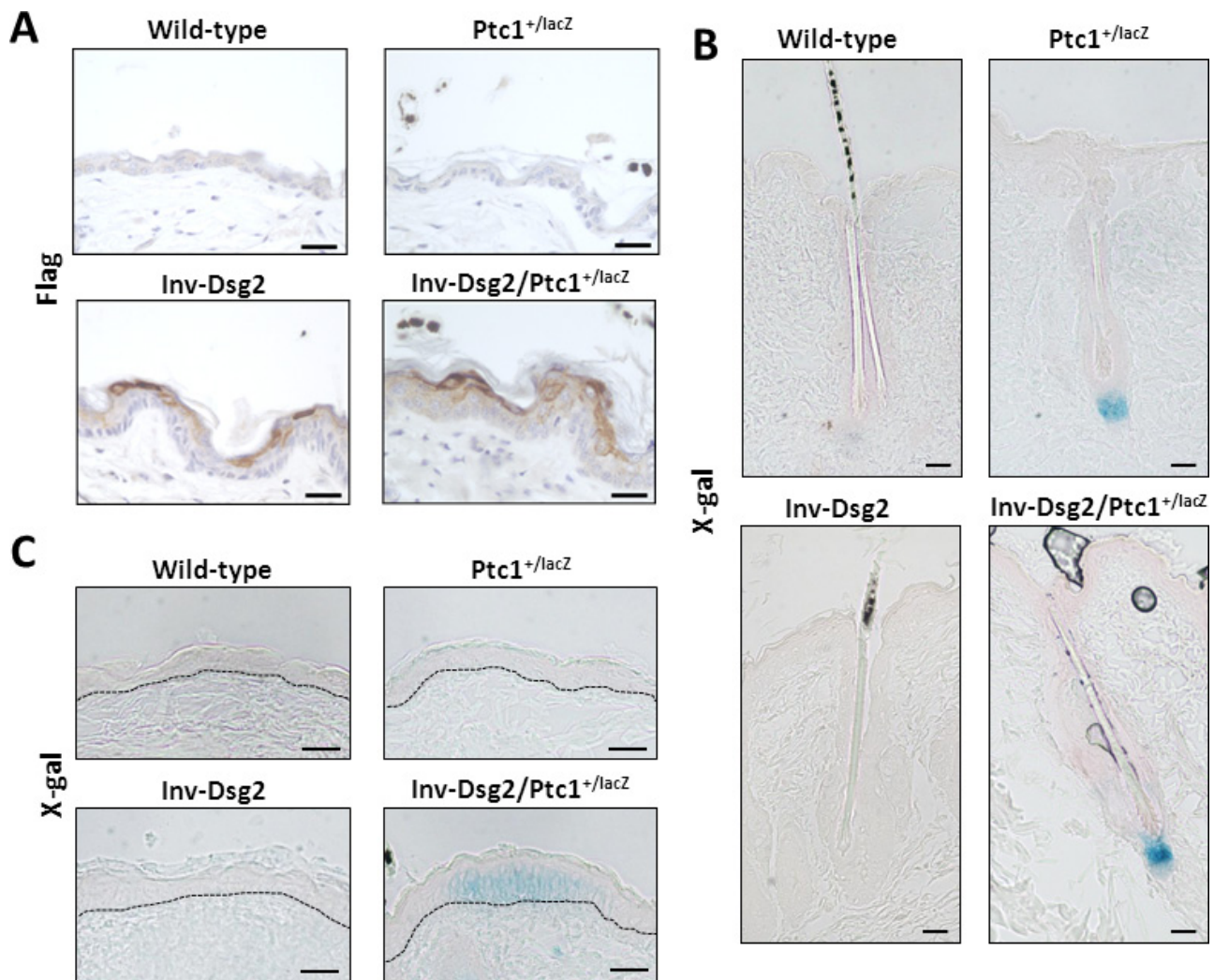


Figure 3: *Inv-Dsg2/Ptc1^{+lacZ}* mice exhibit interfollicular activation of the Hh pathway. A. IHC of mouse backskin with anti-Flag antibodies detects Flag-tagged *Dsg2* transgene expression (brown) in superficial epidermis, nuclei counterstained with hematoxylin. (B-C) X-Gal staining of mouse backskin depicting β -gal expression/Hh activity (blue) and counterstained with nuclear fast red, hair follicles which serve as positive controls B, and interfollicular epidermis C. Scale bar = 25 microns. Dashed line demarcates basement membrane zone.

tumor development [7]. Since compound Inv-Dsg2/Ptc1^{+lacZ} mice showed increased Hh signaling and hyperproliferation compared to Inv-Dsg2 animals, we investigated whether they are more susceptible to DMBA-TPA induced tumor development. Mice were treated once with DMBA, followed by twice-weekly administrations of TPA for 26 weeks. All genotypes developed macroscopic lesions (Figure 4A) by 14 weeks of TPA treatment; however, tumors in the Inv-Dsg2/Ptc1^{+lacZ} mice emerged as early as 5 weeks of TPA treatment, and reached 100% incidence by week 9 (Figure 4C). In comparison, the other three genotypes developed tumors around week 7–8 of treatment and did not reach 100% incidence until weeks 12–14 (Figure 4C). Thus, the Inv-Dsg2/Ptc1^{+lacZ} mice have accelerated macroscopic tumor formation compared to all other genotypes.

To determine if there were any differences in tumor load, we quantified the average size of tumors, the number of tumors per animal (tumor multiplicity) and the average tumor burden in all four genotypes. Tumor development in WT and Ptc1^{+lacZ} mice was highly comparable, suggesting no significant differences between the two genotypes throughout the duration of treatment. As we previously reported, mice overexpressing Dsg2 developed more and larger tumors than WT mice. Comparison of Inv-Dsg2 and Inv-Dsg2/Ptc1^{+lacZ} mice revealed no significant difference in tumor size (Figure 4D). However, Inv-Dsg2/Ptc1^{+lacZ} mice developed significantly more tumors than the Inv-Dsg2 counterparts during the early stages of development, weeks 7–13 (Figure 4E). Interestingly, after week 13 the difference in tumor number between Inv-Dsg2 and Inv-Dsg2/Ptc1^{+lacZ} mice leveled off. Similarly, average tumor burden, which takes into account tumor number and size, showed no difference between Inv-Dsg2 and Inv-Dsg2/Ptc1^{+lacZ} mice after week 13 (Figure 4F). Lack of difference in overall tumor burden but evidence of decreased tumor latency in response to chemical carcinogens in Inv-Dsg2/Ptc1^{+lacZ} mice, suggests a possible synergistic effect of the two pathways on the rate of tumor promotion.

We also compared the tumor morphology at the end of the treatment protocol. All genotypes developed histologically similar papillomas and *in situ* carcinomas (Figure 4B). None of the animals developed full-blown SCC or showed signs of metastasis. Surprisingly, yet in agreement with the similar burden and morphology, neither X-gal nor β -gal staining revealed activation of the Hh pathway in squamous tumors of Ptc1^{+lacZ} or Inv-Dsg2/Ptc1^{+lacZ} mice (Figure 5). However we detected strong X-gal staining in the dermis underlying the tumors in Inv-Dsg2/Ptc1^{+lacZ} mice, which was not observed in Ptc1^{+lacZ} animals (Figure 5A). β -gal staining further confirmed the activation of the Hh pathway in the dermal fibroblasts of the compound mice (Figure 5B). We also found an increased expression of Shh by

immunohistochemical (IHC) staining in the dermis, but not in the epidermis, of Dsg2 transgenic mice, which explains the X-gal and β -gal staining of dermal fibroblasts (Figure 5C). It is therefore possible that activation of the Hh pathway in the dermis in a Shh-dependent manner could account for the earlier tumor emergence in the Inv-Dsg2/Ptc1^{+lacZ} mice. Finally, to determine if there is a change in growth and survival signaling in the SCC tumors of all genotypes, we stained for phosphorylated Erk1/2. Interestingly, while tumors of all genotypes exhibit some level of staining, total phosphorylation and nuclear localization were more prominent in the Inv-Dsg2/Ptc1^{+lacZ} mice than in any other genotype (Figure 6), as confirmed by confirmed by four independent blind observers.

Dsg2 enhances BCC formation in Ptc1 heterozygote animals

Remarkably, while performing the pathology analysis, we unexpectedly observed BCC tumor development in response to DMBA-TPA in Ptc1^{+lacZ} and Dsg2/Ptc1^{+lacZ} mice but not in WT or Inv-Dsg2 animals. BCCs in both Ptc1^{+lacZ} and Inv-Dsg2/Ptc1^{+lacZ} mice had a similar morphology (Figure 7A) and exhibited classical activation of the Hh pathway, as determined by strong X-gal staining (Figure 7A). IHC staining of nuclear β -gal further confirmed pathway activation in the BCCs (Figure 7B). Importantly, the BCC tumor burden was ~2 fold larger in Inv-Dsg2/Ptc1^{+lacZ} compound animals compared to Ptc1^{+lacZ} mice (Figure 7C), suggesting that the presence of Dsg2 enhances BCC development in the Ptc1 heterozygote background.

DISCUSSION

Emerging evidence supports the existence of non-adhesive functions of Dsg2. We and others have shown that Dsg2 promotes keratinocytes proliferation and tumor development by activation of mitogenic signaling pathways [7, 9]. This work expands on our previous findings that established a role for Dsg2 in skin carcinogenesis, by identifying an unrecognized function for Dsg2 in enhancing canonical Hh signaling.

In the present study we demonstrate the existence of a generalized crosstalk between Dsg2 and Hh signaling in different cell types that promotes epidermal proliferation, accelerates squamous-derived tumorigenesis, and enhances BCC development *in vivo*. Our findings suggest that Dsg2 or its downstream signaling, which is not fully understood, might constitute potential new targets for intervention in squamous and basal cell-derived lesions.

Using compound Inv-Dsg2/Ptc1^{+lacZ} mice, which overexpress Dsg2 in the suprabasal epidermis and are heterozygous for Ptc1, we showed a remarkable synergism in the promotion of epidermal hyperproliferation and

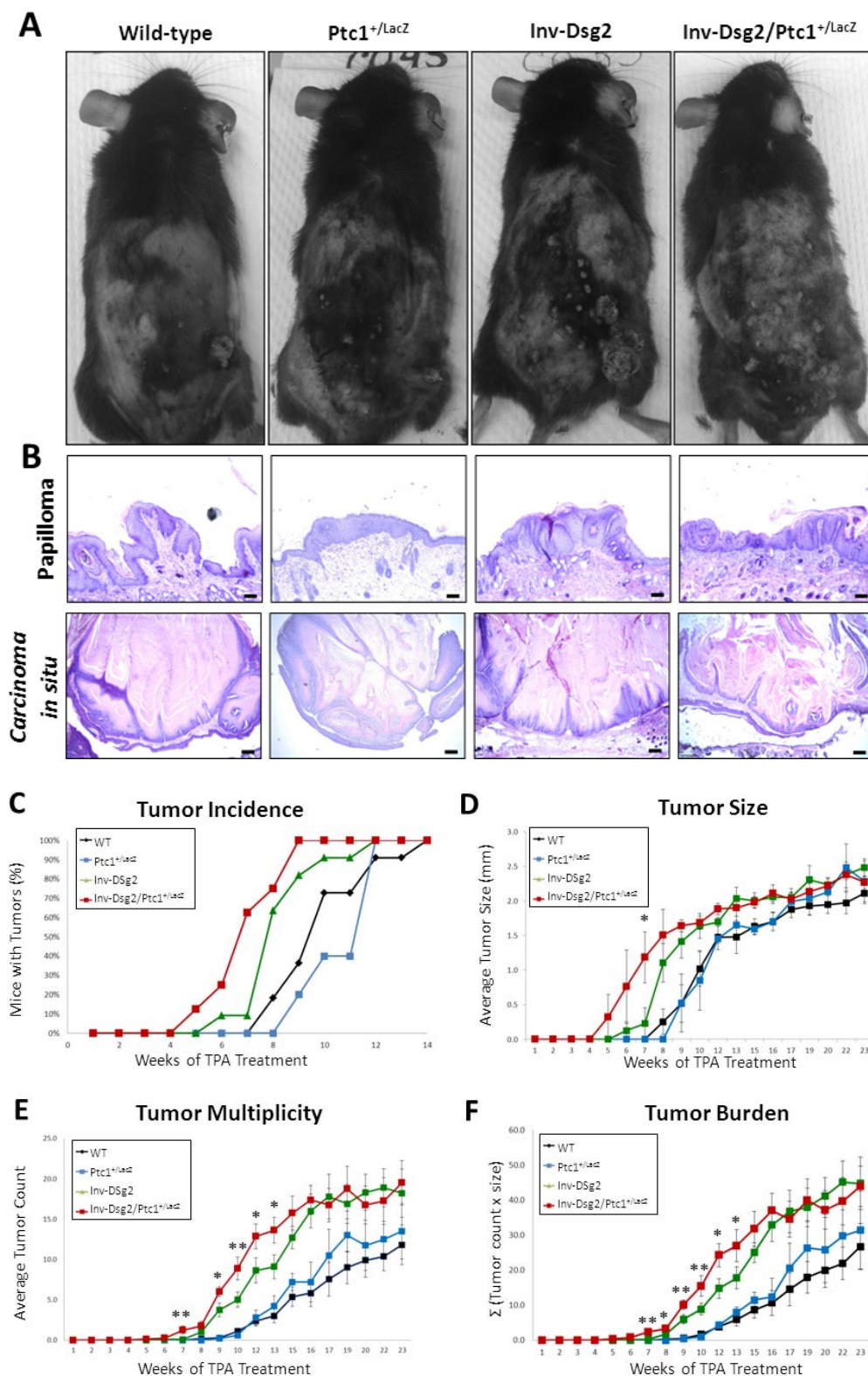


Figure 4: DMBA-TPA treatment results in accelerated growth of squamous derived neoplasia in *Inv-Dsg2/Ptc1^{+/LacZ}* mice. **A.** Macroscopic tumor formation is observed in all mice after DMBA-TPA treatment. **B.** Histological analysis reveals papillomas and *in situ* carcinomas in all genotypes (scale bars = 100 and 250 microns, respectively). **C.** Tumor incidence is depicted as percentage of mice exhibiting tumors. **D.** The average tumor diameter was determined for all mice. **E.** Tumor multiplicity represents the average number of tumors per genotype. **F.** Tumor burden, accounts for size and number of tumors, is represented as the sum of tumors x size (Σ). WT ($n = 11$); Ptc1^{+/LacZ} ($n = 5$); Inv-Dsg2 ($n = 10$); Inv-Dsg2/Ptc1^{+/LacZ} ($n = 8$). The data are shown as the mean \pm SEM. * $p < 0.05$; ** $p < 0.01$; t -test.

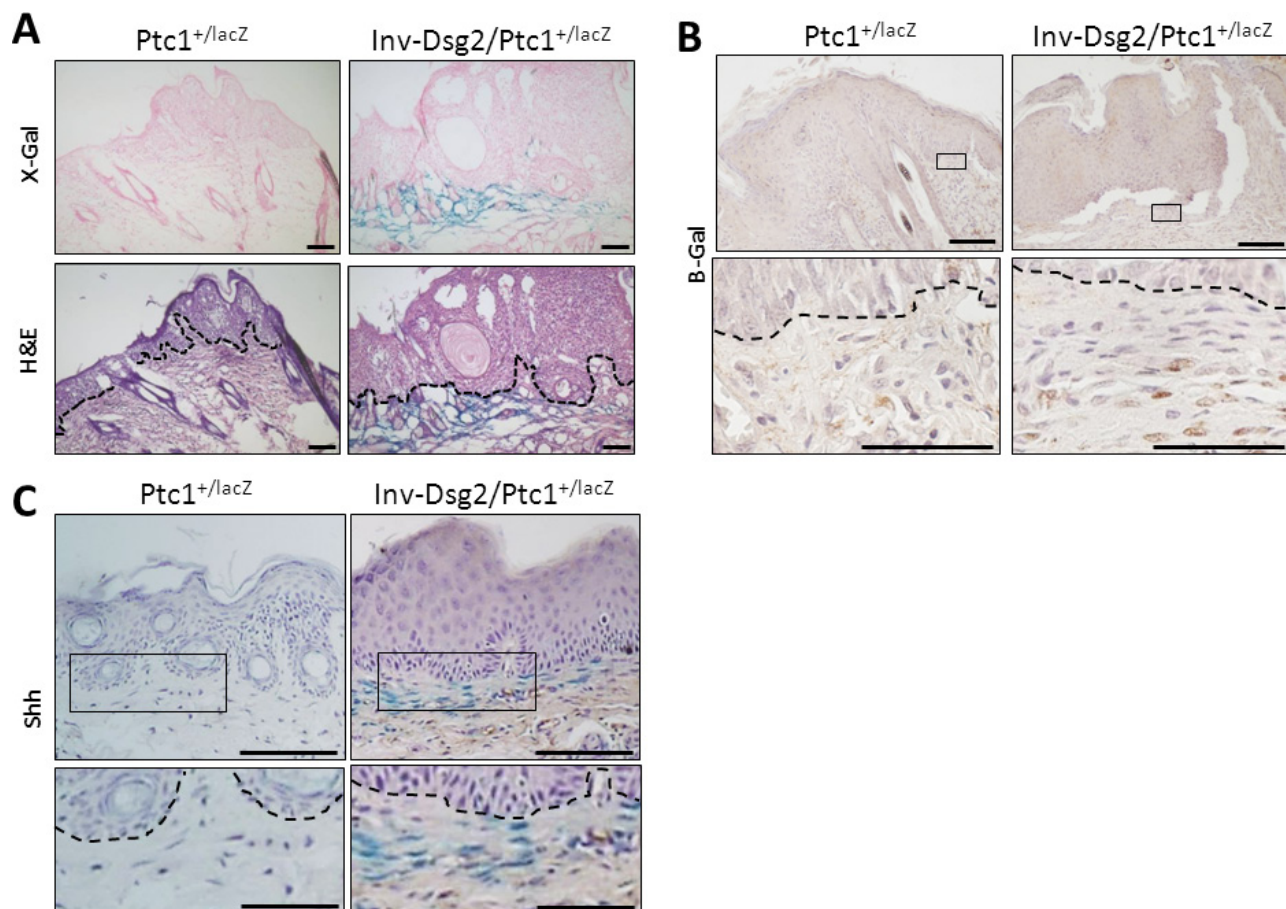


Figure 5: *Inv-Dsg2/Ptc1*^{+/lacZ} mice display Hh activity in the tumor stroma. A. Consecutive sections of papillomas reveal the tumor epithelium is negative for X-gal, but tumor stroma of the *Inv-Dsg2/Ptc1*^{+/lacZ} mice positively stained for Hh activation (blue). B. β-gal IHC confirms activation of the Hh pathway in fibroblasts of the tumor stroma. C. IHC staining reveals Shh in the SCC tumor stroma. Dashed line demarcates basement membrane zone. Scale bar = 100 microns, 50 microns for insets.

upregulation of the canonical Hh pathway in some regions of the IFE compared to the *Ptc1*^{+/lacZ} genotype. We hypothesize that these IFE regions with enhanced Hh activity may expand to form either spontaneous or DMBA-TPA induced BCC. BCC can arise in *Ptc1* heterozygous mice either through LOH of the WT *Ptc1* allele [10] or through activation of the pathway via other means. For instance *Ptc1*^{+/-} mice crossed with mice *Sufu*^{+/-}, a negative regulator of the Hh pathway downstream of Smo, increased basaloid epidermal proliferations [16]. Additionally, *Ptc1*^{+/lacZ} mice with loss of p53 function are also more prone to spontaneous BCC formation [17]. Thus, we speculate that the normally effective regulation of the Hh pathway by just a single allele of *Ptc1* is overcome, potentially through the inhibition of the function of that single copy of *Ptc1* via ligand binding and/or by downstream synergism with other Dsg2-mediated signaling. Furthermore, we observe spontaneous early BCC development only in *Inv-Dsg2/Ptc1*^{+/lacZ} mice (unpublished observations). While *Ptc1*^{+/lacZ} mice can

develop spontaneous BCCs, they are rare and occur only at more advanced ages. We also note that BCCs are not reported in WT or *Inv-Dsg2* mice, even at advanced ages.

Overexpression of Dsg2 in the *Ptc1* heterozygous background also leads to accelerated squamous tumor development in response to DMBA/TPA treatment; however, this effect is only observed during early tumor development. This suggests that Dsg2-Hh crosstalk can enhance tumor promotion, but that it is most likely dispensable for Dsg2-mediated cutaneous tumor development and progression. Indeed, this corroborates the human tissue array studies showing that Hh signaling is not required for cutaneous SCC development, but increased Shh expression is associated with decreased survival in oral SCC [18].

Interestingly, while *Ptc1*^{+/lacZ} mice were also shown to be more prone to SCC development in response to UV-irradiation compared to WT mice, those lesions were also negative for Gli1 and canonical pathway activation [10]. We did not observe a similar increase in response to

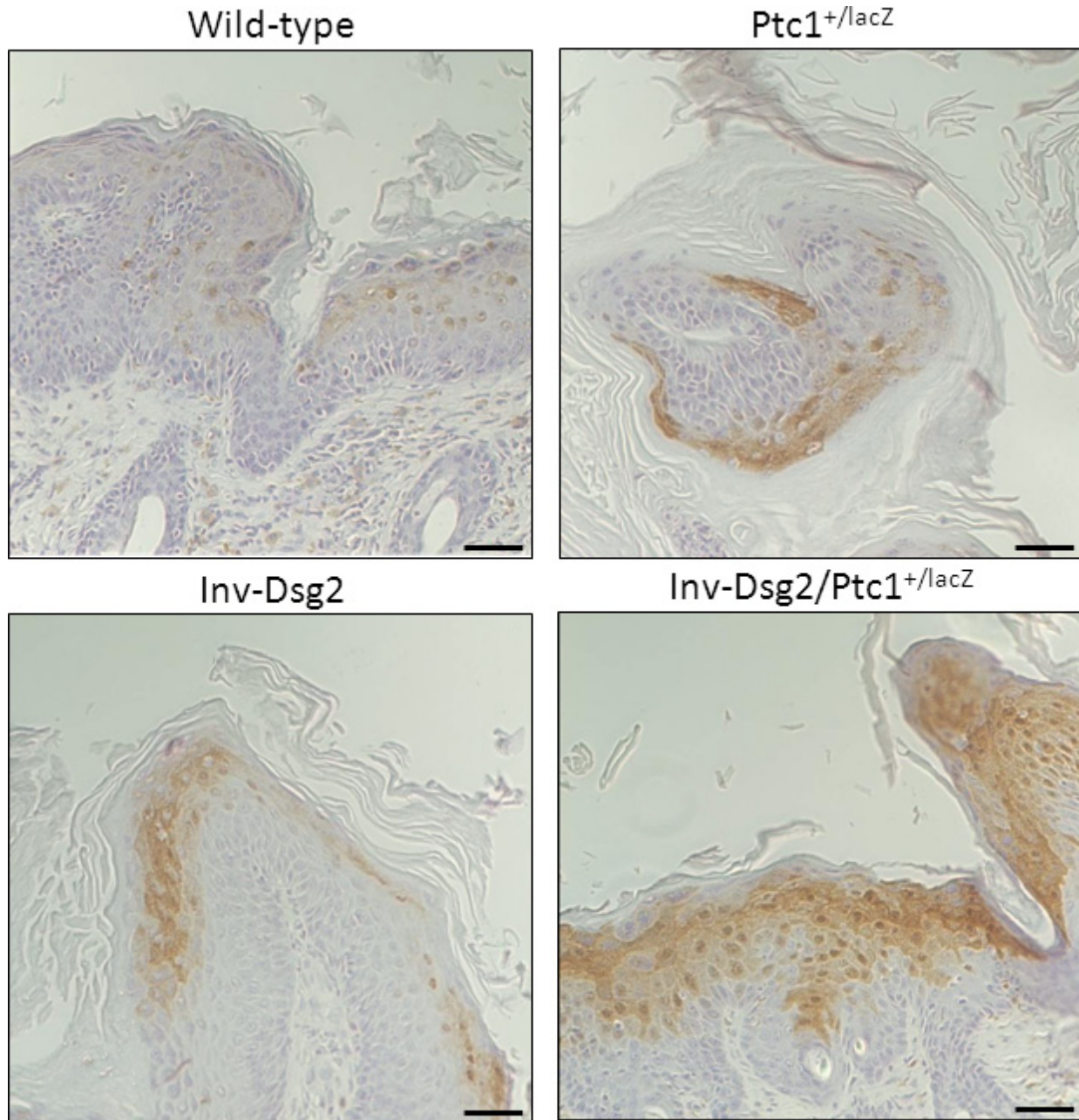


Figure 6: *Inv-Dsg2/Ptc1^{+/lacZ}* squamous lesions exhibit enhanced activation of Phospho-Erk1/2. IHC of Phospho-Erk1/2 reveals increased nuclear localization within the *Inv-Dsg2/Ptc1^{+/lacZ}* squamous lesions. Note that signal is not observed in BCC. Scale bar = 100 microns, 50 microns for insets. Scale bar = 100 microns.

DMBA-TPA treatment, which typically occurs as a result of Ras mutations [19]. This may suggest differing mechanisms for squamous tumor development, and possibly a non-canonical role for Ptc1 in UV-mediated tumorigenesis.

Surprisingly in our *Inv-Dsg2/Ptc1^{+/lacZ}* mice, the activation of the Hh pathway is not observed in SCC tumors, but rather in the dermis underlying the tumors. We also observed an increase in Shh localized to the dermis,

which may explain the increase canonical Hh pathway activation in these dermal fibroblasts. Hh activation has been reported in the stroma of various tumors [20, 21] and mounting evidence suggests that the stroma plays vital roles in tumor promotion, maintenance, and progression [22]. We propose that the activation of Hh signaling in the dermis facilitates a tumor microenvironment conducive to accelerated growth, similar to recent studies in prostate and pancreatic cancers [23, 24]. Therefore, we hypothesize

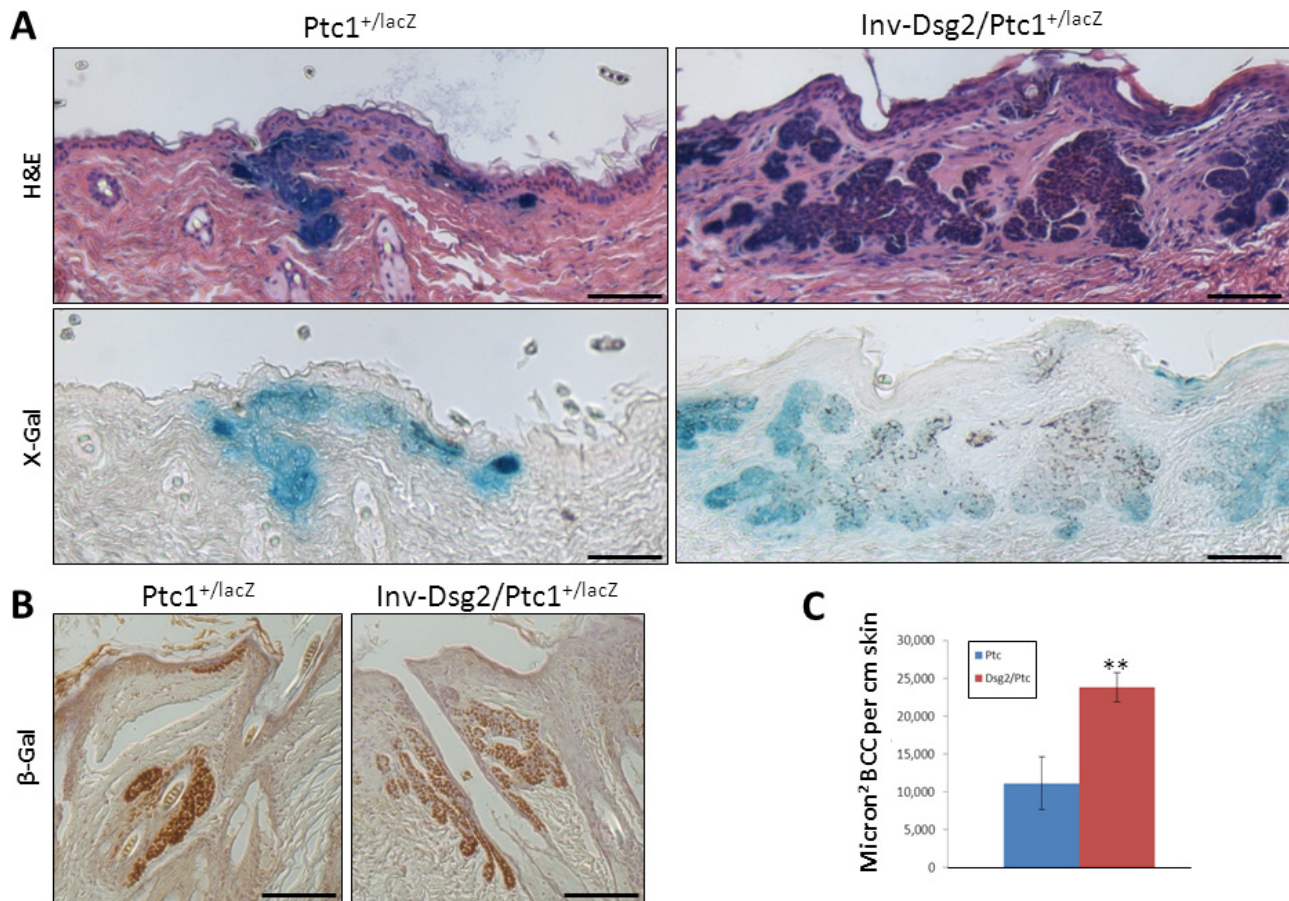


Figure 7: DMBA-TPA induces enhanced BCC formation in *Inv-Dsg2/Ptc1^{+/lacZ}* mice. **A.** Microscopic BCC formation is observed in all mice harboring the *Ptc1^{+/lacZ}* gene (H&E), and these tumors display characteristic activation of the Hh pathway (X-gal). BCCs were not found in any WT or *Inv-Dsg2* mice. **B.** β -gal IHC confirms activation of the Hh pathway in the induced BCCs. Scale bars = 100 microns. **C.** BCC tumor burden is increased more than two-fold in *Inv-Dsg2/Ptc1^{+/lacZ}* mice. *Ptc1^{+/lacZ}* ($n = 4$); *Inv-Dsg2/Ptc1^{+/lacZ}* ($n = 6$). The data are shown as the mean \pm SEM. ** $p < 0.01$; t -test.

that *Dsg2*-mediated squamous tumor promotion may be accelerated by the activation of Hh signaling in the adjacent dermis. Indeed, increased activation of *Erk1/2* suggests enhanced growth and survival signaling activity in *Inv-Dsg2/Ptc1^{+/lacZ}* tumors.

Finally, another potential driver of *Dsg2*-Hh tumorigenesis is activation of non-canonical Hh signaling [25, 26]. While this study was designed to analyze canonical, Gli-dependent Hh signaling, *Ptc1* and *Smo* exert other functions independent of transcription that regulate cell survival. In particular, *Ptc1* is an inducer of apoptosis, and inhibition of its function by *Dsg2* could increase cell survival and tumor formation [27]. Future investigations are needed to determine what role *Dsg2* may have in activating non-canonical Hh signaling, its role on keratinocyte proliferation and survival.

To our knowledge, this is the first report that a desmosomal cadherin can facilitate activation of the Hh signaling pathway and promote BCC and SCC

tumor formation. The significance of *Dsg2*-Hh crosstalk has implications beyond cutaneous tumors, as both players are deregulated in a variety of cancers including oral head and neck SCC, gastric, and prostate cancers [24, 26, 28–32]. Moreover, our data specifically suggests that two distinct mechanisms of *Dsg2*-Hh synergy are responsible for the effects on the different tumor types. DMBA/TPA-induced BCCs in *Inv-Dsg2/Ptc1^{+/lacZ}* mice exhibit classical activation of the Hh pathway; whereas, squamous-derived neoplasia lack detectable Hh activity. Furthermore, unlike BCCs, squamous lesions are accompanied by *Shh* expression and Hh pathway activity in the underlying dermis, and the tumors themselves harbor increased levels of activated *Erk1/2*. Future studies to elucidate these differing mechanisms of Hh pathway induction in response to *Dsg2* are underway. The implication of the crosstalk in various tumors has the potential to identify targets for novel and tailored cancer treatments. Furthermore, these findings may be relevant to the current therapeutic options

for squamous lesions, as they suggest that the canonical Hh pathway active in the dermis adjacent to those tumors has a positive influence in tumor promotion, and could be suggestive of an additional route of intervention using the FDA approved Smo inhibitor Vismodegib.

MATERIALS AND METHODS

Ethics statement

Investigation using animals has been conducted in accordance with the ethical standards according to national and international guidelines and has been approved by the authors' Institutional Animal Care & Use Committee approvals.

Cell culture

All reagents were from Sigma (St. Louis, MO) or Fisher (Waltham, MA) unless otherwise indicated. A431-shDsg2, A431-shGFP, HaCaT-shDsg2, and HaCaT-shGFP cells were previously established (Gift from Dr. James K. Wahl III, University of Nebraska, [15]). Cells were grown to ~70% confluency in complete DMEM with 10% FBS (Gemini Bio Products, West Sacramento, CA) and then serum starved (0.5% FBS) for 24–48 hours prior to lysis in Triton X-100 lysis buffer for Western analysis.

Western analysis

Proteins were resolved over 5–10% SDS-PAGE (Bio-Rad Laboratories), transferred to PVDF membrane, non-specific sites blocked in 5% Carnation milk in PBS/Tween-20 and incubated in primary antibodies in 1% BSA in PBS/T-20 overnight at 4°C. Membranes were washed and incubated with HRP-conjugated secondary antibodies from Jackson ImmunoResearch (West Grove, PA) and signal was detected with chemiluminescence (ECL, GE Life Sciences, Piscataway, NJ). Antibodies: 10D2 (1:100; gift from Dr. Wahl), Actin (1:100, 000; Calbiochem; Billerica, MA), Gli1 (1:1000; Cell Signaling Technology, Danvers, MA). Quantitation performed using ImageJ available at <http://rsb.info.nih.gov/ij/>; developed by Wayne Rasband (National Institutes of Health, Bethesda, MD).

RNA-extraction and RT-qPCR

RNA was extracted from cultured cells or skin tissues using RNAeasy kit (Qiagen; Valencia, CA) or Trizol (Life Technologies, Carlsbad, CA), respectively. DNA was removed using TURBO DNase I (Life Technologies) and cDNA was generated using High-Capacity cDNA Reverse Transcription Kit (Life Technologies). qPCR was performed on BioRad MiniOpticon with Sso Eva Green (Bio-Rad, Hercules, CA). Forward (F) and reverse (R) primers are as follows.

Mouse – Dsg2-F: GAGGAATTGAGTGCAGCACATAC,
Dsg2-R: CTTGCTTCCACCGTCAAGG;
Gli1-F: GTCCGCGCCTCTCCCACATACTA,
Gli1-R: ACGCTCGCAGGGCAGGGATAG;
Ptc1-F: GGAAGGGGCAAAGCTACAGT,
Ptc1-R: TCCACCGTAAAGGAGGCT TA;
Sox9-F: TCGGTGAAGAACGGACAAGC,
Sox9-R: TGAGATTGCCAGAGTGCTCG;
Gapdh-F: CCCATCACCATCTTCCAGGAGCGA;
Gapdh-R: TCCACCCTTCAAGTGGCCC.
Human – DSG2-F: GAAGAGTTGAGTGCAGCACATAC,
DSG2-R: CTTGCTTCTACTGTCAAAGTCTACG;
GLI1-F: CCAACTCCACAGGCATACAGGATCCC,
GLI1-R: TCTTGGGAGTCAAATTCCTGGCTGCA;
GAPDH-F: CCCATCACCATCTTCCAGGAGCGA,
GAPDH-R: CCCCTGCAAATGAGCCCCAG.

Transgenic and knock-in mouse models

All animal studies were in compliance with the Institutional Animal Care & Use Committee approvals. Ptc1^{+LacZ} knock-in reporter mice (Ptc1^{tm1Mps/J}) were obtained from Jackson Labs (Bar Harbor, ME). Inv-Dsg2 mice were previously generated and described in detail [7]. All animals were maintained under ALAAC approved conditions. Ptc1^{+LacZ} and Inv-Dsg2 mice were crossed to yield WT, Ptc1^{+LacZ} Inv-Dsg2 and Inv-Dsg2/Ptc1^{+LacZ} mice. Animals were sacrificed at indicated time points and tissues collected for analysis.

DMBA-TPA skin carcinogenesis

DMBA (7,12-dimethylbenz[a]anthracene; 400 nmol in 200 µl acetone) was applied directly to shaved backskin of 6–8 week old mice under red light, and housed overnight in the dark. Subsequently, mice were treated topically, twice weekly with TPA (12-O-tetradecanoylphorbol 13-acetate; 17 nmol in 200 µl acetone) for 26 weeks. Tumors were counted and measured weekly. After 26 weeks mice were sacrificed and tumors collected for analysis.

Histology, microscopy, and morphometric analysis

Tissues were fixed in 10% formalin, paraffin embedded, processed for histology with Hematoxylin and Eosin. Bright field images were acquired with either EVOS microscope system (Life Technologies, Carlsbad, CA) or Zeiss Axioshop microscope (Carl Zeiss Microscopy, Thornwood, NY) with SPOT Insight camera and software (HiTech Instruments, Pennsburg, PA). Epidermal measurements were performed using EVOS software. BCCs were identified in H&E sections by the following characteristics: discrete, nodular aggregations of hyperchromatic epithelial basaloid cells with prominent

nuclei and scant cytoplasm; tumor area measurements were completed using ImageJ.

BrdU incorporation assay

Mice were injected subcutaneously in the dorsal region with 5-bromo-2-deoxyuridine (50 mg/gram). After one hour, mice were sacrificed and tissue collected for processing. Direct immunofluorescence was performed using Anti-BrdU-FITC (BD Biosciences, San Jose, CA). A percentage of BrdU-positive over total epidermal basal cells was reported.

LacZ reporter gene detection

Tissues were fixed in 4% paraformaldehyde for 20–40 minutes at room temperature and incubated overnight in 1 mg/ml X-Gal (5-bromo-4-chloro-3-indolyl-beta-D-galacto-pyranoside) at 37°C. Tissues were then processed for OCT or histology, and counterstained with Nuclear Fast Red (Rowley Biochemical, Danvers, MA).

Immunofluorescence (IF) and immunohistochemistry (IHC)

Immunostaining was performed on formalin-fixed paraffin embedded sections as previously described [6]. IF utilized Alexa-Fluor secondary antibodies (Life Technologies) with DAPI (100 ng/ml) for DNA counterstaining. IHC was completed with EnVision HRP antibody system (Dako, Carpinteria, CA). Antibodies: anti-FLAG pAb, 1:1000 (Sigma); anti-loricrin mAb, 1:1000 (Covance); anti- β -gal pAb 1:5000 (MP Biomedicals, Santa Ana, CA); 5E1 anti-Shh mAb 1:50 (DSHB, Iowa City, IA); anti-Phospho-Erk1/2 1:400 (Cell Signaling, Danvers, MA).

ACKNOWLEDGMENTS

Research reported in this publication was supported by the National Cancer Institute of the National Institutes of Health under Award Number F31CA171680 (Brennan-Crispi). The content is solely the responsibility of the authors and does not necessarily represent the official views of the National Institutes of Health. Mouse monoclonal antibodies and shDsg2 cell lines were kind gifts from Dr. James K. Wahl III (Dept of Oral Biology, University of Nebraska Medical Center, Lincoln, NE). The monoclonal antibody 5E1 against Shh developed by Jessell and Brener-Morton was obtained from the Developmental Studies Hybridoma Bank, created by the NICHD of the NIH and maintained at The University of Iowa, Department of Biology, Iowa City, IA 52242.

Special thanks to the Mahoney Lab: Felicia Cooper, Abhilasha Gupta, Kathleen McGuinn, Andrew Overmiller,

and Ayumi Tsuda; and the Riobo Lab: Xiaole Chen, Lan Cheng, and Lan Ho; without whom this work would not be possible.

CONFLICTS OF INTEREST

The authors declare no conflicts of interest.

Authors' contributions

DMBC planned and designed experiments, collected and analyzed data and wrote the manuscript; MGM and NAR, planned and designed experiments and wrote the manuscript; JS, analyzed the tumor histology; CH and MB, performed experiments and collected data.

REFERENCES

1. Green KJ, Jones JC. Desmosomes and hemidesmosomes: structure and function of molecular components. *FASEB J*. 1996; 10:871–881.
2. Cheng X, Koch PJ. *In vivo* function of desmosomes. *J Dermatol*. 2004; 31:171–187.
3. Schäfer S, Koch PJ, Franke WW. Identification of the ubiquitous human desmoglein, Dsg2, and the expression catalogue of the desmoglein subfamily of desmosomal cadherins. *Exp Cell Res*. 1994; 211:391–399.
4. Schäfer S, Stump S, Franke WW. Immunological identification and characterization of the desmosomal cadherin Dsg2 in coupled and uncoupled epithelial cells and in human tissues. *Differentiation*. 1996; 60:99–108.
5. Koch PJ, Goldschmidt MD, Zimbelmann R, Troyanovsky R, Franke WW. Complexity and expression patterns of the desmosomal cadherins. *Proc Natl Acad Sci. U S A*. 1992; 89:353–357.
6. Brennan D, Mahoney M. Increased expression of Dsg2 in malignant skin carcinomas: A tissue-microarray based study. *Cell Adh Migr*. 2009; 3:148–154.
7. Brennan D, Hu Y, Joubert S, Choi Y, Ehitaker-Menezes D, O'Brien T, Uitto J, Rodeck U, Mahoney M. Suprabasal Dsg2 expression in transgenic mouse skin confers a hyperproliferative and apoptosis-resistant phenotype to keratinocytes. *J Cell Sci*. 2007; 120:758–771.
8. Brennan D, Peltonen S, Dowling A, Medhat W, Green K, Wahl Jr, Del Galdo F, Mahoney M. A role for caveolin-1 in desmoglein binding and desmosome dynamics. *Oncogene*. 2012; 31:1636–1648.
9. Kamekura R, Kolegraff KN, Nava P, Hilgarth RS, Feng M, Parkos CA, Nusrat A. Loss of the desmosomal cadherin desmoglein-2 suppresses colon cancer cell proliferation through EGFR signaling. *Oncogene*. 2013; 33:4531–4536.
10. Aszterbaum M, Epstein J, Oro A, Douglas V, LeBoit PE, Scott MP, Epstein EHJ. Ultraviolet and ionizing radiation

- enhance the growth of BCCs and trichoblastomas in patched heterozygous knockout mice. *Nat Med.* 1999; 5:1285–1291.
11. Riobo NA, Haynes GM, Emerson CP Jr. Protein kinase C-delta and mitogen-activated protein/extracellular signal-regulated kinase-1 control GLI activation in hedgehog signaling. *Cancer Res.* 2006; 66:839–845.
 12. Schnidar H, Eberl M, Klingler S, Mangelberger D, Kasper M, Hauser-Kronberger C, Regl G, Kroismayr R, Moriggl R, Sibilica M, Aberger F. Epidermal growth factor receptor signaling synergizes with Hedgehog/GLI in oncogenic transformation via activation of the MEK/ERK/JUN pathway. *Cancer Res.* 2009; 69:1284–1292.
 13. Goodrich LV, Milenkovic L, Higgins KM, Scott MP. Altered neural cell fates and medulloblastoma in mouse patched mutants. *Science.* 1997; 277:1109–1113.
 14. Mancuso M, Pazzaglia S, Tanori M, Hahn H, Merola P, Rebessi S, Atkinson MJ, Di Majo V, Covelli V, Saran A. Basal cell carcinoma and its development: insights from radiation-induced tumors in Ptc1-deficient mice. *Cancer Res.* 2004; 64:934–941.
 15. Keim SA, Johnson KR, Wheelock MJ, Wahl JK Jr. Generation and characterization of monoclonal antibodies against the proregion of human desmoglein-2. *Hybridoma.* 2008; 27:249–258.
 16. Svard J, Rozell B, Toftgard R, Teglund S. Tumor suppressor gene co-operativity in compound Patched1 and suppressor of fused heterozygous mutant mice. *Mol Carcinog.* 2009; 48:408–419.
 17. So PL, Langston AW, Daniallinia N, Hebert JL, Fujimoto MA, Khaimskiy Y, Aszterbaum M, Epstein EHJ. Long-term establishment, characterization and manipulation of cell lines from mouse basal cell carcinoma tumors. *Exp Derm.* 2006; 15:742–750.
 18. Schneider S, Thurnher D, Kloimstein P, Leitner V, Petzelbauer P, Pammer J, Brunner M, Erovic BM. Expression of the Sonic hedgehog pathway in squamous cell carcinoma of the skin and the mucosa of the head and neck. *Head Neck.* 2011; 33:244–250.
 19. Balmain A, Ramsden M, Bowden GT, Smith J. Activation of the mouse cellular Harvey-ras gene in chemically induced benign skin papillomas. *Nature.* 1984; 307:658–660.
 20. Bermudez O, Hennen E, Koch I, Lindner M, Eickelberg O. Gli1 mediates lung cancer cell proliferation and Sonic Hedgehog-dependent mesenchymal cell activation. *PLoS One.* 2013; 8:e63226.
 21. Li X, Wang Z, Ma Q, Xu Q, Liu H, Duan W, Lei J, Ma J, Wang X, Lv S, Han L, Li W, Guo J, Guo K, Zhang D, Wu E, et al. Sonic hedgehog paracrine signaling activates stromal cells to promote perineural invasion in pancreatic cancer. *Clin Cancer Res.* 2014; 20:4326–4338.
 22. Lim YZ, South AP. Tumour-stroma crosstalk in the development of squamous cell carcinoma. *Int J Biochem Cell Biol.* 2014; 53C:450–458.
 23. Shaw A, Gipp J, Bushman W. The Sonic Hedgehog pathway stimulates prostate tumor growth by paracrine signaling and recapitulates embryonic gene expression in tumor myofibroblasts. *Oncogene.* 2009; 28:4480–4490.
 24. Tian H, Callahan CA, DuPree KJ, Darbonne WC, Ahn CP, Scales SJ, de Sauvage FJ. Hedgehog signaling is restricted to the stromal compartment during pancreatic carcinogenesis. *PNAS.* 2009; 106:4254–9.
 25. Brennan D, Chen X, Cheng L, Mahoney M, Riobo NA. Noncanonical Hedgehog signaling. *Vitam Horm.* 88:55–72.
 26. Robbins DJ, Fei DL, Riobo NA. The Hedgehog signal transduction network. *Sci Signal.* 2012; 5:ref6.
 27. Chen XL, Chinchilla P, Fombonne J, Ho L, Guix C, Keen JH, Mehlen P, Riobo NA. Patched-1 proapoptotic activity is downregulated by modification of K1413 by the E3 ubiquitin-protein ligase Itchy homolog. *Mol Cell Biol.* 2014; 34:3855–66.
 28. Biedermann K, Vogelsang H, Becker I, Plaschke S, Siewert JR, Hofler H, Keller G. Desmoglein 2 is expressed abnormally rather than mutated in familial and sporadic gastric cancer. *J Pathol.* 2005; 207:199–206.
 29. Trojan L, Chaaf A, Steidler A, Haak M, Thalmann G, Knoll T, Gretz N, Alken P, Michel MS. Identification of metastasis-associated genes in prostate cancer by genetic profiling of human prostate cancer cell lines. *Anticancer Res.* 2005; 25:183–191.
 30. Ramani VC, Hennings L, Haun RS. Desmoglein 2 is a substrate of kallikrein 7 in pancreatic cancer. *BMC Cancer.* 2008; 8:373.
 31. Teglund S, Toftgard R. Hedgehog beyond medulloblastoma and basal cell carcinoma. *Biochim Biophys Acta.* 2010; 1805:181–208.
 32. Barber AG, Castillo-Martin M, Bonal DM, Rybicki BA, Christiano AM, Cordon-Cardo C. Characterization of desmoglein expression in the normal prostatic gland. Desmoglein 2 is an independent prognostic factor for aggressive prostate cancer. *PLoS One.* 2014; 9:e98786.