

The Global Health “Interactive Curricula Experience (iCE) Platform & App”: Technology that Enables Inter-professional Innovation

Lucille B. Pilling, EdD, MPH, RN¹; Martha Langley Ankeny, MEd¹; Amy Earle, BFA²; James Plumb, MD, MPH¹; Ellen J Plumb, MD¹;
Louis N. Hunter, PT, DPT¹; Janice Bogen, MA¹; Nicholas Leon, PharmD¹

¹Thomas Jefferson University, Philadelphia, PA; ²Digital Wave Technologies, Huntingdon Valley, PA

Background

Global Health Initiatives Committee (GHIC)

Serves the Jefferson community as the *premier point of engagement* for students & faculty interested in medical and public health issues that transcend national boundaries

Creates an *institutional focus* on preparing students for public service careers in population health and public policy at local, national, and global levels

Center for Teaching and Learning (CTL)

Promotes teaching excellence and effective student learning through the use of advanced education techniques, effective information technologies, and models of best practices in order to foster creativity, collaboration, and innovation.

The Center provides service to all Jefferson faculty, staff, and students, helping each achieve their goals in class and in practice.

Goal

To enable all TJU faculty to:

- Deliver global health education, in a friendly, interactive format
 - Does not require an expert to deliver
 - Can be used in very small or large pieces depending on your needs

About the Interactive Curricula Experience (iCE)

The “interactive Curricula Experience (iCE) Platform & App” is an innovative technology that is timely and important for medical educators.

It is a content management system that facilitates the organization and delivery of Jefferson-developed content for faculty.

iCE provides a mechanism to rapidly create new learning objects/course content that can be accessed, used as is, or duplicated and modified by instructors for use in different courses.

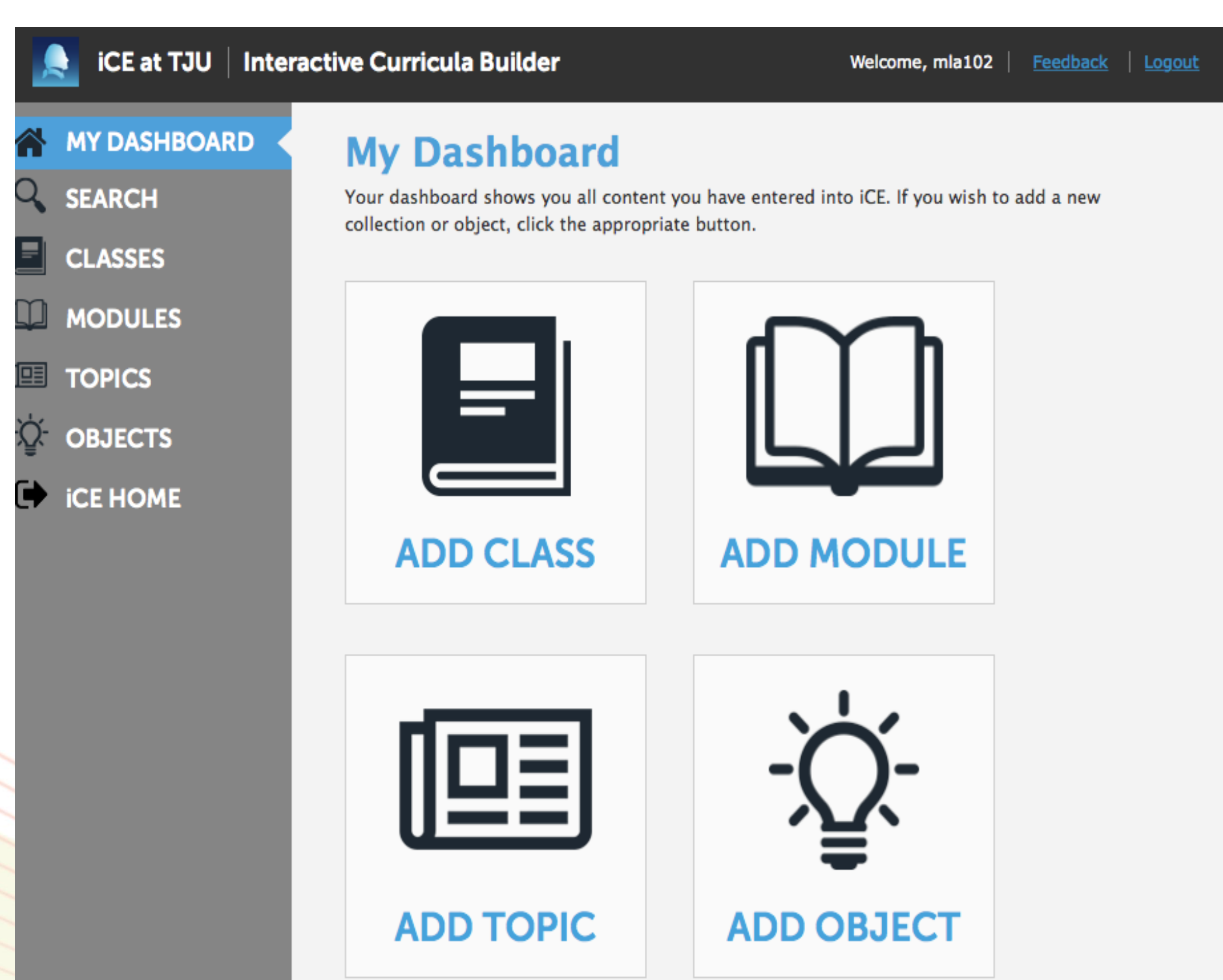
The courseware is available to students via iPad, as well as on laptop and desktop computers.

It enables migration to new academic models with engaging content that encourages exploration.

Building a Global Health Module

- Built utilizing existing curricula and up-to-date evidence based research
- Utilizes multiple methodologies to draw attention to key issues, terminology, and information; these include: “watch and learn” animation, hot spots, meters, timelines, decision trees.
- Fluidly adapts and incorporates the newest information, crises, global summits, and events
- Monitored continuously and periodic quantitative and qualitative evaluations with instructors and students are planned.

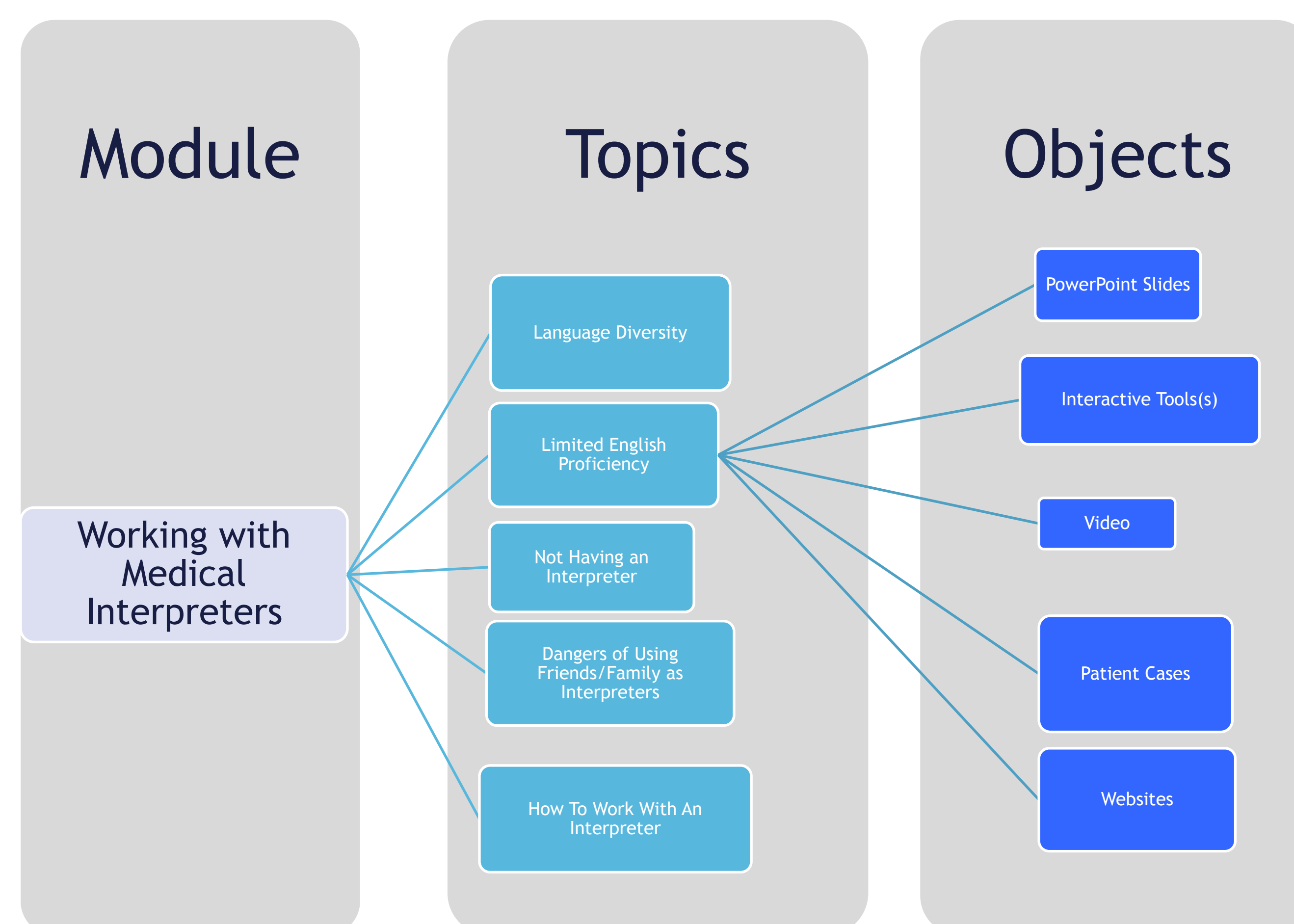
iCE Dashboard Used to Build a Global Health Module



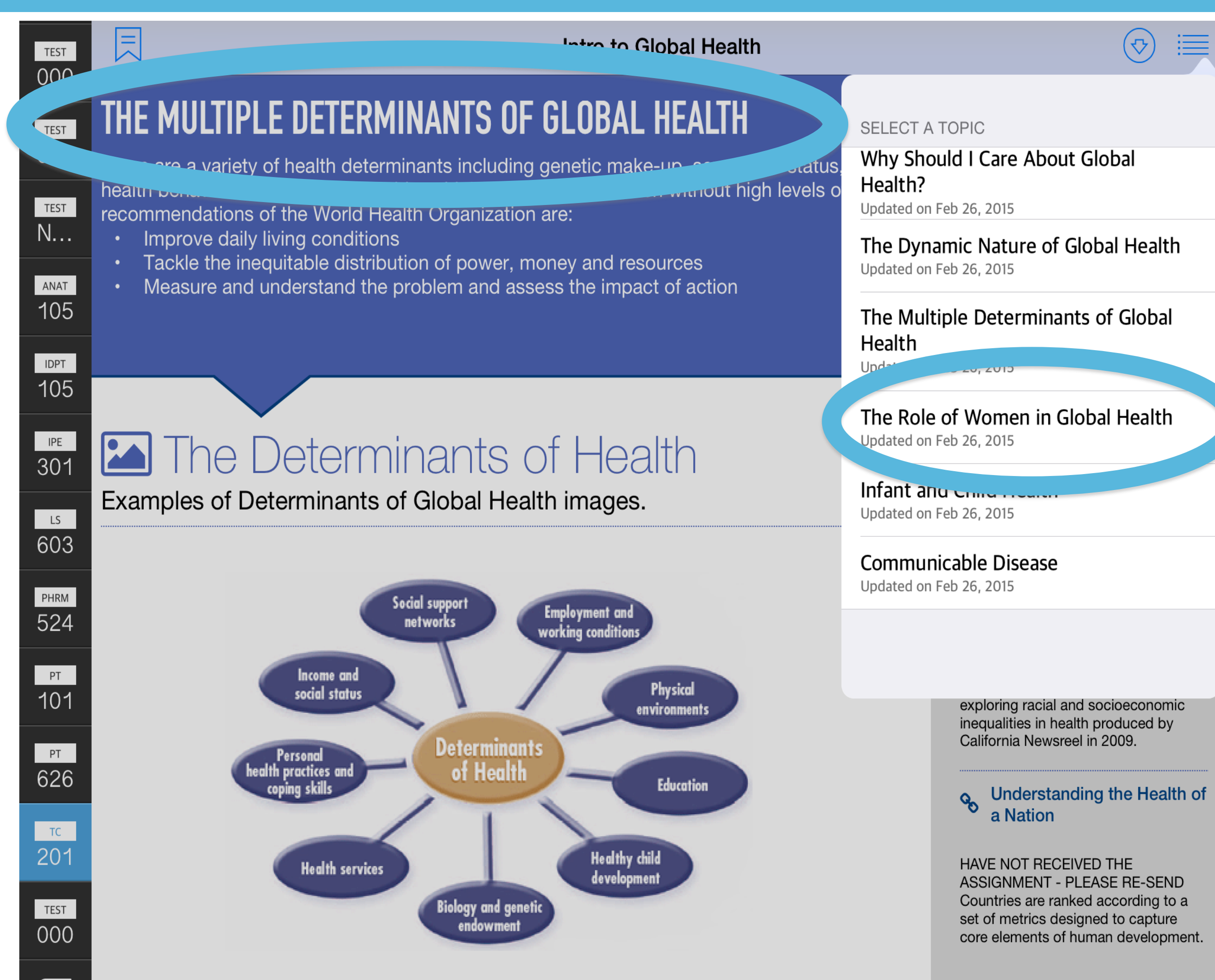
Purpose

Modules created using the iCE will provide:

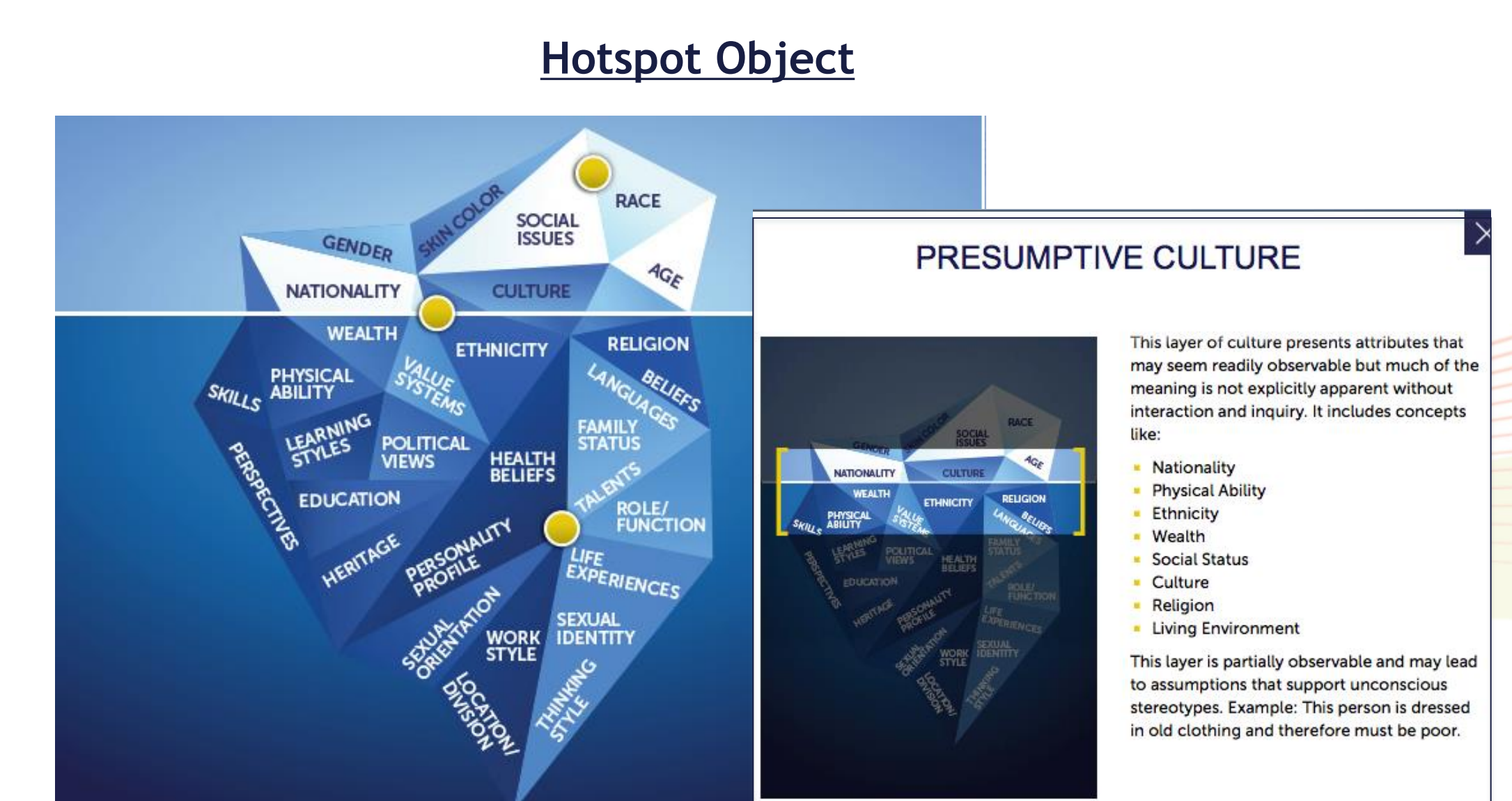
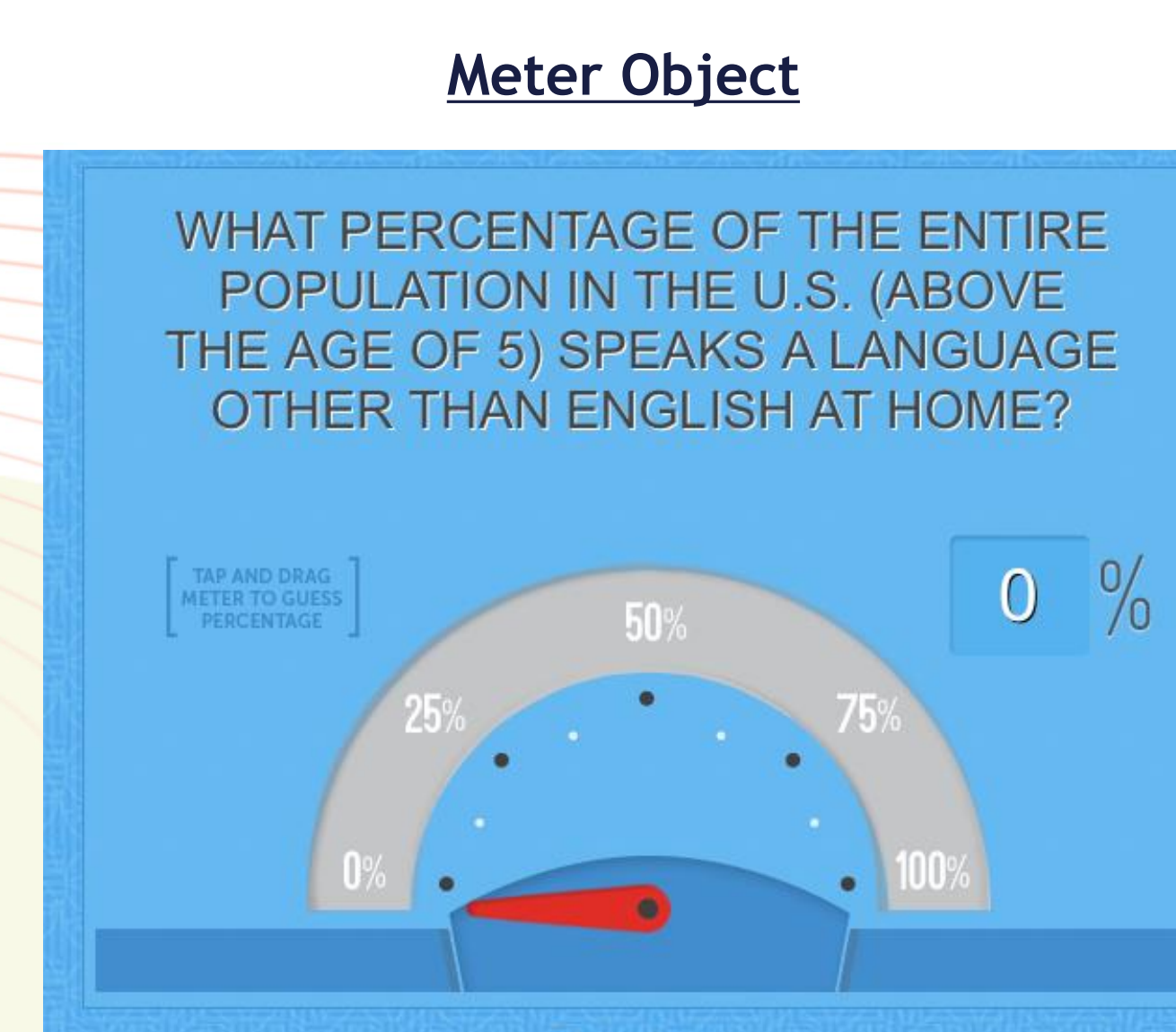
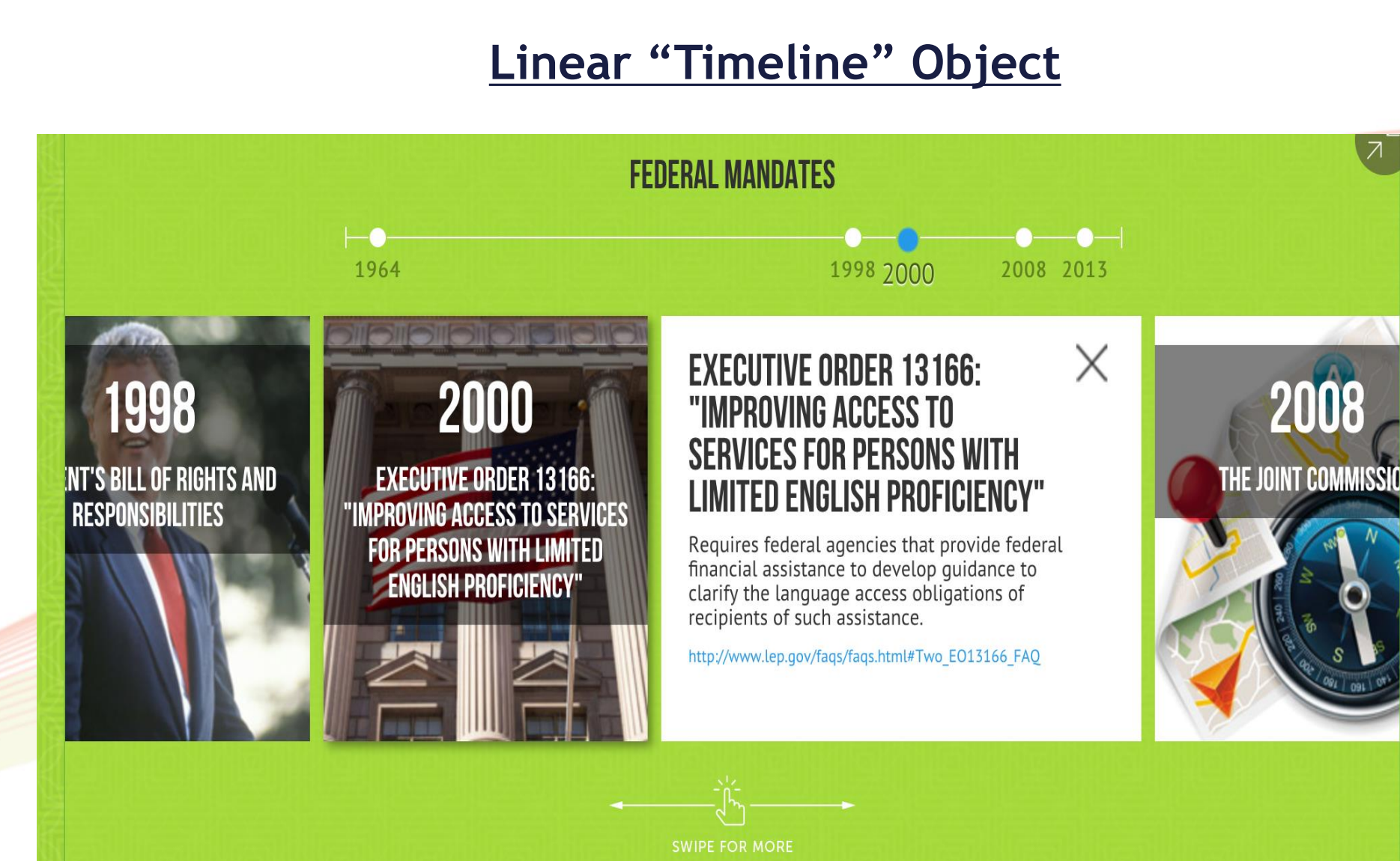
- A web-based application that faculty will use to easily import content to share with faculty and students
- A mechanism for faculty to share content with other faculty members
- A mechanism for faculty to deliver custom content directly to student’s iPads
- Faculty can create courses which are made up of:
 - Modules, Topics, and Objects
- Useable on iPads, and desktop & laptop computers



Topics



Interactive Objects



Global Health in the Classroom: List of GHIC Modules

- Intro to Global Health - Topics, History & Trends
- The Role of Culture in Global Health
- Using Medical Interpreters
- Measuring Global Health
- Social, Economic and Political Dimensions/Determinants of Global Health
- Human Rights Dimensions of Global Health - Ethics, Health, Equity
- Healthcare Delivery Systems
- Global Health Policy
- Communicable Diseases
- Non-communicable Diseases
- Women's and Children's Health
- Nutrition and Mental Health
- The Global Response/Disasters
- Environmental Dimensions of Global Health

Next Steps and Challenges

Next Steps

- Entire module could be used in a classroom “lecture”
- A particular topic(s) and/or object(s) within a module could be used in the classroom to be incorporated into something you already do
- Could post module (or any combination of its components) in Blackboard Learn for students to use for an assignment or as a study aid
- Use a module and add discipline-specific content to it
- Combine different components (topics and objects) to form your own module

Challenges

- The ongoing challenge is having to continuously update the information.
- Faculty monitor websites and review relevant articles, reports, conferences, webinars and post them to iCE modules.

Objects

