

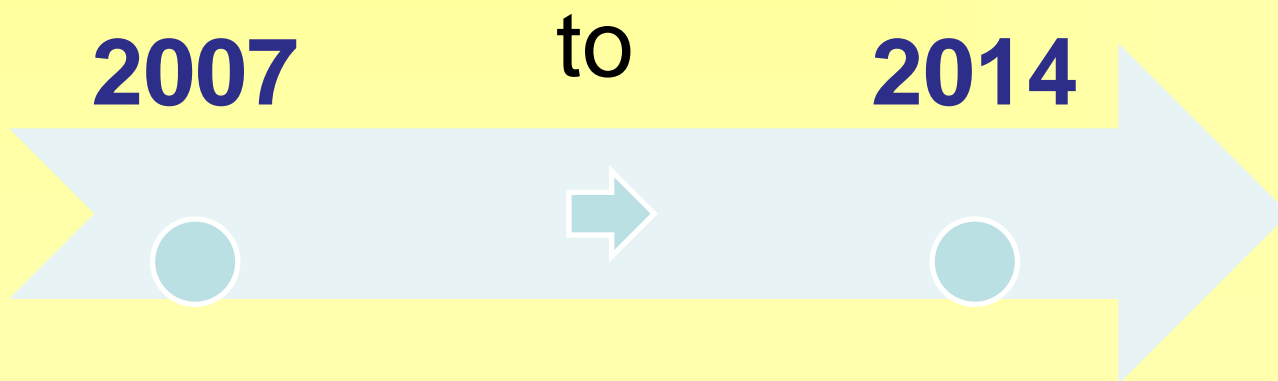
# **Inter-professional *Service Learning to Increase Students' Understanding of Migrant Latino Health***



**The Walk to Honduras**  
Jean Davison, DNP, RN, FNP

# Purpose:

*To describe a seven year inter-professional service learning course to increase students' understanding of migrant Latino health.*

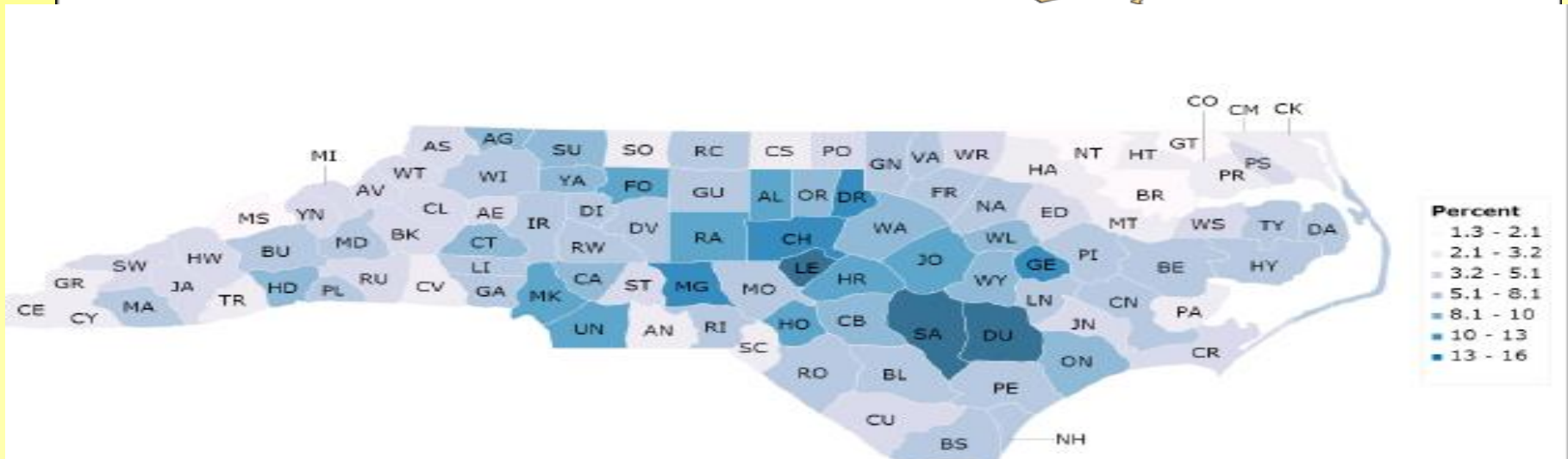
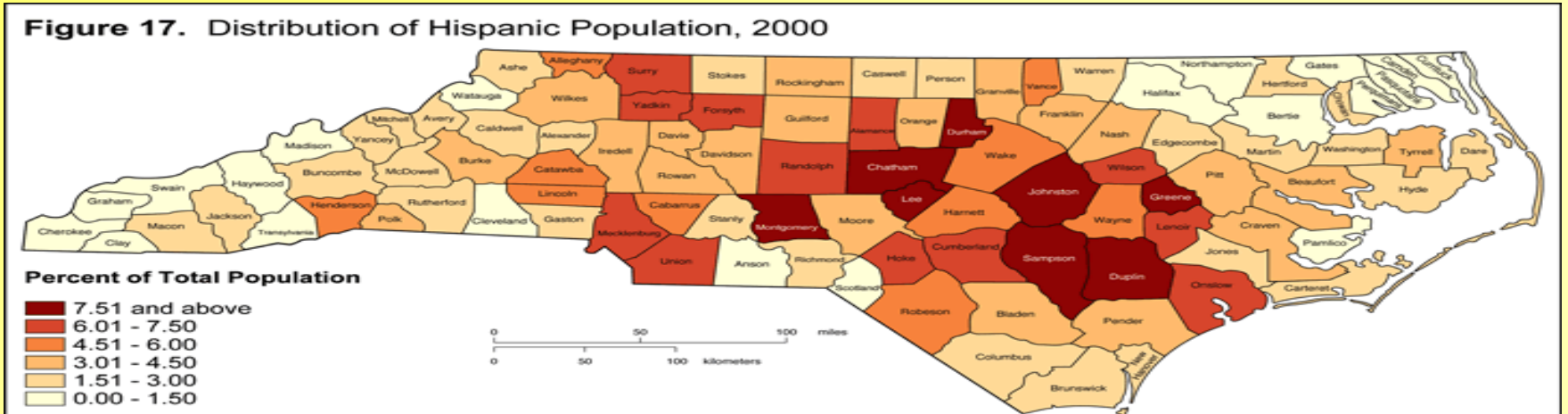


# Learning Objectives

At the end of this seminar participants will be able to:

1. Explain the relevance of inter-professional, cultural competent, global health approaches to health assessment and interventions at home and abroad.
2. Identify evidence-based programs to improve target population health, utilizing the CLAS standards to advance health equity, improve quality and help eliminate health disparities.
3. Design a service learning inter-professional health education course with teaching strategies for cultural competency training that utilizes academic and clinical partnerships.

According to the 2010 US Census Bureau the Hispanic population accounted for > 50% of the 27.3 million increase in total population growth.  
 17% of US population identifies as Hispanic/Latino origin as of 2012.



2010 Census map <http://www.indexmundi.com/facts/united-states/quick-facts/north-carolina/hispanic-or-latino-population-percentage#map>

## United States compared to Honduras

<b><i>Statistic</i></b>	<b><i>United States</i></b>	<b><i>Honduras</i></b>
Total population (2012)	<b>318,000,000</b>	<b>7,936,000</b>
Gross national income per capita (PPP international \$, 2012)	<b>52,610</b>	<b>3,880</b>
Life expectancy at birth m/f (years, 2011)	<b>76/81</b>	<b>72/76</b>
Probability of dying under five (per 1 000 live births, 2012)	<b>7</b>	<b>23</b>
Probability of dying between 15 and 60 years m/f (per 1 000 population, 2011)	<b>131/77</b>	<b>163/114</b>
Total expenditure on health per capita (Intl \$, 2011)	<b>8,608</b>	<b>351</b>
Total expenditure on health as % of GDP (2011)	<b>17.9</b>	<b>8.6</b>

# US Latino Health Disparities

- Hispanic adults have the largest age-adjusted prevalence of **diabetes**.
- **Obesity**: Prevalence largest for males < 20 yo,
- **Birth rate for Hispanic adolescent** 5x to 1.3 x greater
- **HIV dx rate** 2<sup>nd</sup> largest, (A-A are 1st)
- Highest **fatal occupational injury** rate
- **Lowest** adult completion rate for **secondary education**
- Hispanic peds twice as likely to hospitalized for **asthma**

<http://www.cdc.gov/minorityhealth/CHDIReport.html> (2013)

# How do we teach holistic care:

- Interprofessionalism team work
- Human caring behaviors
- Ethics
- Spirituality
- Cultural Understanding
- Community and family centered health
- Global health/public health
- Social justice
- Leadership/ambassadorship
- **And integrate this into practice?**

# Service Learning

Service and Learning are both valued and balanced.



It is a **Team** experience and an **Individual** experience





**2007 multidiscipline team of twenty**

# 2014 Interdisciplinary Experience



# **Ethical issues related to short term missions**

- Cultural understanding and language barriers.
- Who benefits? Is community involved in planning?
- Risk of harm? To patients, community or students?
- Responsible use of resources/costs \$\$
- Sustainability/continued support/referrals

# Community Partnerships for sustainability: locally and globally

- **Compassion Med**  **International**

[www.compassionmed.org](http://www.compassionmed.org)

Grace Church <http://gracelife.com/>

- Inglesia Misionera de Cristo

- **UNC SON Carolina Nursing**

<http://nursing.unc.edu>





# CLÍNICA MÉDICA

**MEVIL**

Fe  
Enmanuel



Benevolencia  
Educación

ATENCIÓN EN:

**CONSULTA GENERAL  
CON MEDICAMENTO BÁSICO**

*incluido*

DR. JORGE E. AGUILERA  
DRA. VANESSA ROMERO

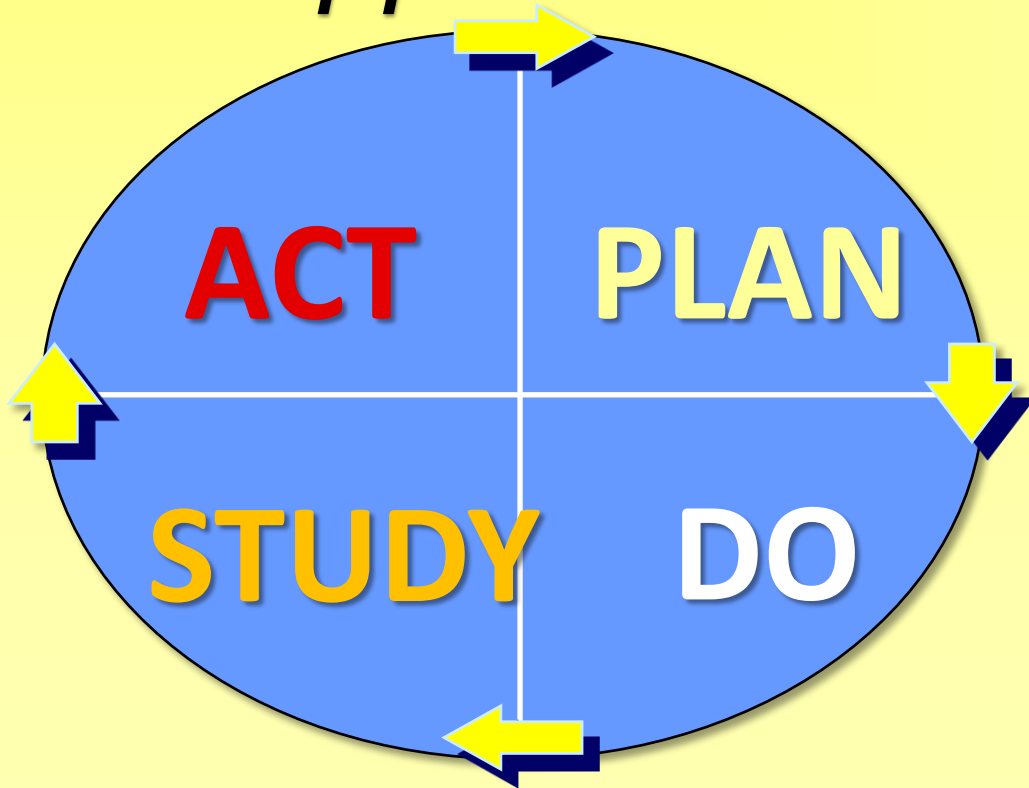
MORARIO DE ATENCIÓN: DE 7:30 A.M. A 3:30 P.M. DE LUNES A VIERNES

DIRECCIÓN: COLONIA PLAN DE LOS PINOS,  
SECTOR "A" 3RA ENTRADA FRENTE A UNITEC,  
CASA 459, CONTIGUO A PULPERIA ELSA

CEL: 9967 8878 / 8862 0540    e-mail: feemed@gmail.com



# Quality Improvement Using a *Team Based Learning Approach*



# Preparation: Global Health Issues

- **Travel: immunizations, passport and safety issues**
- **Cultural understanding and language**
- **Fundraising/donations for vitamins, meds, school supplies etc.**
- **Student Presentations and Preparation**

**Discussion board: Immigration issues after required readings to include: Sonia Nazario. *Enrique's Journey: The Story of a Boy's Dangerous Odyssey to Reunite with His Mother.***



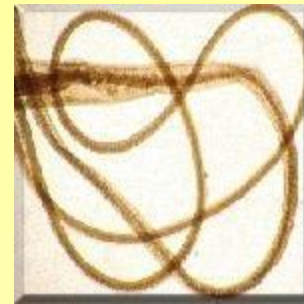
# Student Presentations and preparation

- **Water Born Diseases**
- **Diarrhea**
- **Using an interpreter**
- **Culture**
- **Domestic Violence**
- **Substance Abuse**
- **Skin infections**
- **Malnutrition,**
- **lead poisoning**
- **Parasites**
- **Malaria and Dengue Fever**
- **HIV**
- **TB**
- **Typhoid and Cholera**

# Water-Borne Illness

## In Honduras by Julie Bentley

- ✓ **Diarrhea:** globally, there are approximately 4 billion cases per year with 1.8 million deaths (> deaths among children under 5).
- ✓ **Intestinal worms** infect about 1 in 10 people in the developing world. May lead to anemia and cognitive impairment.



# Medications thanks to CMI



# Arrival and Customs in Tegucigalpa





Old school buses don't die. They go to Honduras!



Health screening day at school



Family screenings; Alice Toher, FNP student

# Visiting Orphanage







Distributing food packs. We fed 50 families with a week's supply of groceries.



Delivering much needed supplies....



Going to a rural clinic in the mountains.....



# Impact

**Impact:** Following service learning experience students are expected to give presentations of their experiences. Impact will be measured by

- Identifying evidence-based programs to improve population-global health
- Applying CLAS standards to care.
- Educating the public on global health issues
- Reflection and self evaluation of their learning

# Access to Care: people waiting



I was overwhelmed by the crowds of patients waiting to see us. They stood with no complaints patiently while we set up clinic. I had the feeling they were waiting for hours before we even arrived. I felt so inadequate to meet their needs. When we starting seeing the patients in clinic I realized that I did in fact have something to offer -I was perhaps the only health care provider they had seen in a long time.

By Deb

# Home Visit



# Team work by Ron

- I stopped for a brief moment to take this picture while everyone was seeing patients and was in awe on how well the team of strangers came together and the dedication of each individual.





# Mother's love by Emily

- I was impressed with the determination of this mother to bring her sick child to be seen. She had walked hours to the clinic and waited patiently. Her child was dx with OM and treated with antibiotics



This one means a lot to me because these clowns were doing what none of us could do at the time.

Kent Kessinger, photographer



The team visited the Escuela hospital and gave out food and toys to the needy patients. Clowns entertained the cancer ward and prayed for chemo-therapy patients before handing out toys that the team delivered.

# Role of the Women in Honduras

## Grandmothers in Poverty



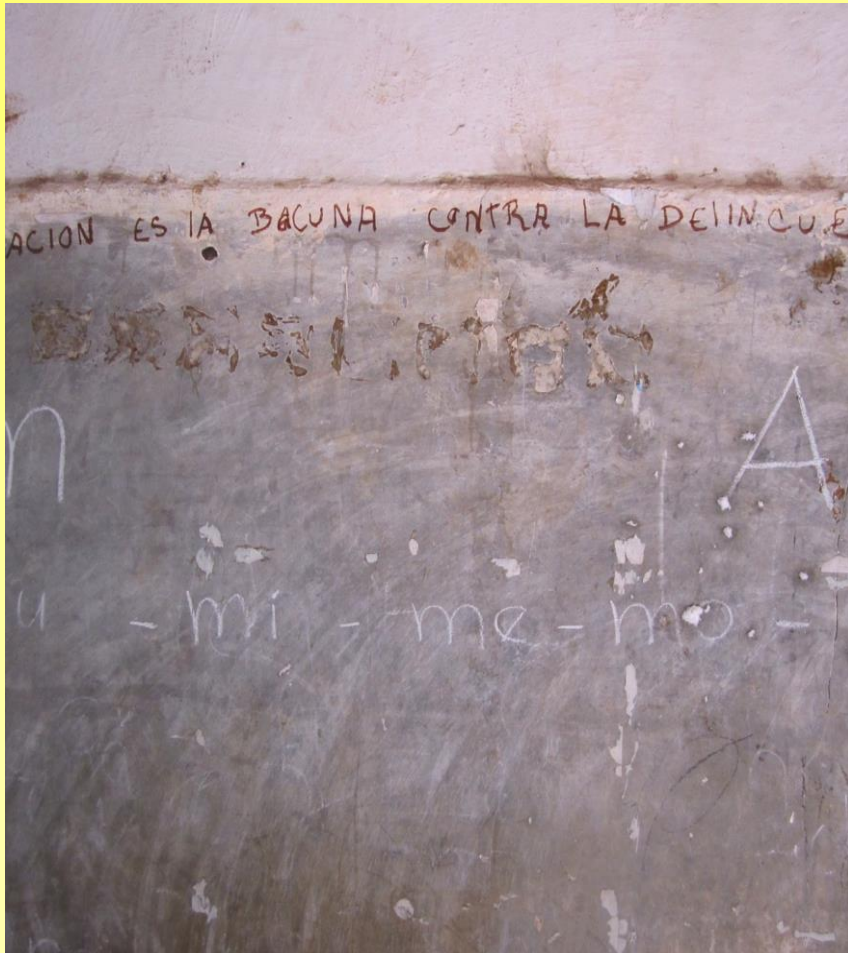
# Empowering Women by Jill



- This is a picture of a tortilla press. Moises has set up small business loans for women so they can have an income to support their children, preventing broken families when mothers leave to go to the US or Spain.

# My favorite photos

Education is the vaccine against delinquency, through education we change our lives



## *The Rose That Grew From the Concrete*

Did you hear about the rose that grew from a crack in the concrete?

Proving nature's law is wrong it learned to walk without having feet.

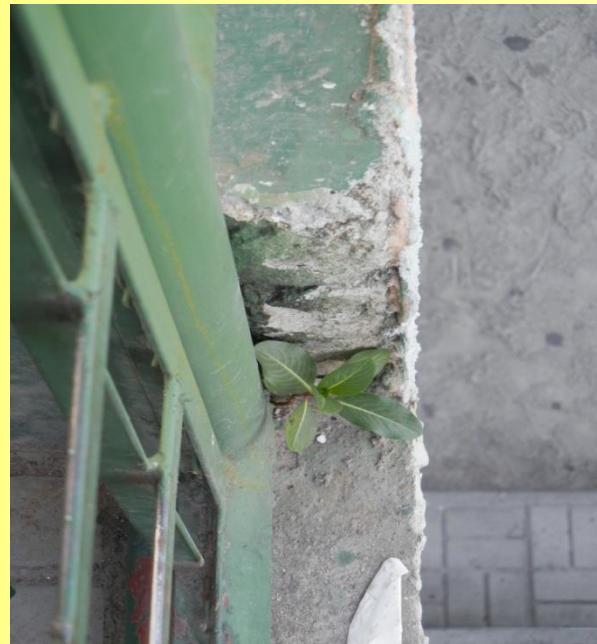
Funny it seems, but by keeping its dreams it learned to breathe fresh air.

Long live the rose that grew from concrete when no one else ever cared.

~Tupac Shakur

This was a shot from the upstairs railing at Moises's church. After looking at the picture I was reminded of this poem by rapper Tupac Shakur. Although not a rose, any plant that grows from concrete is a reminder of strength and perseverance in the face of adversity. The same qualities we saw everyday in the people of Honduras.

Another picture that made an impression on me was one of 2 children from our clinic at the church. This showed the family structure we often discussed of young children often being on their own and/or taking big roles in the family, such as babysitter, at a young age. I am thankful that the people of Tegucigalpa have people like Moises and his church family.





The night that the kids danced for us was memorable because I enjoyed how proud they were to share their culture. I could tell they put a lot of hard work into practicing! The girl to the right also touched my heart. She came to the green clinic on the first day complaining of lower back pain. It turned out that she was suffering from scoliosis and would need further medical help that we could not provide. Even though she was in pain, it did not stop her from flashing the enormous grin you see here. She was so sweet and patient with me as I struggled to communicate to her in Spanish. Her spirit and the strength of all the Honduran people was amazing. They endure things we would be constantly complaining about, but they do it with a smile. I have learned from this trip that it is important to find joy in life no matter what your situation.



**“Through the trip, I gained critical clinical experience, particularly with asthma, dermatological conditions and nutritional deficiencies. Even more valuable than the experience, however, were the lessons I learned about culture, health and my role as a health care team member.” Student quote from submitted article to Carolina Nursing: Spring 2008.**





# *Hopes and Fears:*



# > 60,000 Unaccompanied Alien Children in 2014

Country	Fiscal Year 2009	Fiscal Year 2010	Fiscal Year 2011	Fiscal Year 2012	Fiscal Year 2013	Fiscal Year 2014
El Salvador	1,221	1,910	1,394	3,314	5,990	15,800
Guatemala	1,115	1,517	1,565	3,835	8,068	16,528
<b>Honduras</b>	<b>968</b>	<b>1,017</b>	<b>974</b>	<b>2,997</b>	<b>6,747</b>	<b>17,975</b>
Mexico	16,114	13,724	11,768	13,974	17,240	14,702

U.S. Border Patrol Statistics Unaccompanied Alien Children Encountered by Fiscal Year Fiscal Years 2009-2013; Fiscal Year 2014 through August 31

<http://www.cbp.gov/newsroom/stats/southwest-border-unaccompanied-children>

# Websites for further info

- Compassion Med International

<http://www.compassionmed.org/>

- UNC School of Pharmacy

<http://www.youtube.com/watch?v=QhdzFvM3rvQ>

UNC School of Nursing

<http://nursing.unc.edu/>

# Thank you, partners!

## **Student Preceptors and Volunteers:**

- Dr. Ronald Herring, D.O., physician,
- Drs. Christine Walko and Dawn MacElroy, Pharm D, pharmacists
- Elizabeth Prata, MSN, FNP, and Schmucker, Monica, MSN, FNP
- Kent Kessinger and Emiko Davison are photo journalists,
- Dr. Gwen Sherwood, PhD, RN, FAAN, Professor and Associate Dean of Academic Affairs and UNC SON Global Health

## **Honduras Community Partners:**

- Dr. Jorge Aguilera, is a Honduran physician and director of Clinica Febe and Children's educational program.
- Pastor Moises Chino Murillo, Pastor to Inglesia Misionera de Cristo with a clinic and compassion feeding program/ educational services for children.

# Questions/Discussion

