

Two Cases of Spinal, Extraosseous, Intradural Ewing’s Sarcoma/Peripheral Neuroectodermal Tumor: Radiologic, Pathologic, and Molecular Analysis

Stacey K Mardekian, Ashish Gandhe¹, Markku Miettinen², Svetlana Pack², Mark T Curtis, Ziedulla Abdullaev²

Departments of Pathology, and ¹Radiology, Thomas Jefferson University Hospital, Philadelphia, PA, ²Laboratory of Pathology, National Cancer Institute, United States

Address for correspondence:

Dr. Mark T Curtis,
Room 282 Main Building,
Department of Pathology, Thomas Jefferson University Hospital, 132 South 10th Street, Philadelphia, PA 19107, United States.
E-mail: mark.curtis@jefferson.edu



Received : 29-11-2013

Accepted : 08-01-2014

Published : 30-01-2014

ABSTRACT

Extraosseous Ewing’s sarcoma/peripheral neuroectodermal tumors (ES/PNETs) are rare neoplasms that account for approximately 10%-15% of soft tissue sarcomas in children and 5% of soft tissue sarcomas in adults. Primary spinal, extraosseous, intradural ES/PNETs are even less common. The diagnosis of ES/PNET is extremely challenging, because the tumor can have a nonspecific radiologic appearance, and the histologic features are shared by many other “small round cell tumors.” Thus, ES/PNET should be included in the radiologic and pathologic differential diagnosis, even in older patients and in unusual tumor sites. We report two cases of spinal, extraosseous, intradural ES/PNETs in adults who presented with back pain. Magnetic resonance imaging revealed contrast enhancing, intradural lesions in the area of the conus medullaris. The tumor in Case 1 was partially intramedullary, while the tumor in Case 2 was exclusively extramedullary. In both cases, the radiologic and intraoperative surgical impression favored ependymoma. The diagnosis of ES/PNET was established in both cases by histopathologic, immunohistochemical, and molecular analysis.

Key words: Ewing sarcoma/peripheral neuroectodermal tumor, intradural spinal neoplasms, peripheral neuroectodermal tumors

Access this article online

Quick Response Code:



Website:

www.clinicalimagingcience.org

DOI:

10.4103/2156-7514.126050

INTRODUCTION

Ewing’s sarcoma/peripheral neuroectodermal tumor (ES/PNET) is a highly malignant primitive neoplasm, occurring most commonly as a primary tumor of bone in children and young adults.^[1] When ES/PNET affects older patients, the tumor most often presents as an extraosseous soft tissue mass.^[2]

Copyright: © 2014 Mardekian SK. This is an open-access article distributed under the terms of the Creative Commons Attribution License, which permits unrestricted use, distribution, and reproduction in any medium, provided the original author and source are credited.

This article may be cited as: Mardekian SK, Gandhe A, Miettinen M, Pack S, Curtis MT, Abdullaev Z. Two Cases of Spinal, Extraosseous, Intradural Ewing’s sarcoma/Peripheral Neuroectodermal Tumor: Radiologic, Pathologic, and Molecular Analysis. J Clin Imaging Sci 2014;4:6. Available FREE in open access from: <http://www.clinicalimagingcience.org/text.asp?2014/4/1/6/126050>

ES/PNET is a member of a group of heterogeneous mesenchymal tumors with round cell morphology designated "small round cell sarcomas," which includes alveolar rhabdomyosarcoma, desmoplastic small round cell tumor, mesenchymal chondrosarcoma, and poorly differentiated synovial sarcoma.^[3] Other tumors that may have a similar "small round cell" appearance include lymphoma, Merkel cell carcinoma, small cell carcinoma, and Wilms' tumor. A precise diagnosis is critical, as the management of ES/PNET differs dramatically from the other histologically similar neoplasms.

We present two cases of ES/PNET occurring in the spinal, intradural location. A small number of cases of ES/PNET have been reported in this unusual location.^[4] Case 1 was a 26-year-old male with a recent history of back pain. Case 2 was a 70-year-old male with increasing back pain and a history of multiple tumors. The tumor in Case 1 was shown by radiologic and intraoperative examination to be intramedullary, an extremely rare occurrence, while the tumor in Case 2 was extramedullary. These two cases highlight the importance of considering ES/PNET in the radiologic differential for intradural spinal tumors.

RADIOLOGIC FEATURES

A 26-year-old male (Case 1) presented with new onset of low back pain without antecedent injury. Magnetic resonance imaging (MRI) of the lumbar spine showed a 4.1 × 1.6 cm, T1 hypointense, and T2 hyperintense, intradural mass lesion at T12-L1, arising from the area of the conus medullaris and extending inferiorly. The lesion was densely invested with the roots of the cauda equina and demonstrated heterogeneous enhancement [Figure 1]. There was no evidence of hemorrhage, peritumoral edema, or syringomyelia. Imaging of the entire central nervous system showed no evidence of leptomeningeal enhancement or cerebrospinal fluid (CSF) seeding. With these radiologic features and tumor location, ependymoma was considered the most likely diagnosis. Other tumors in the differential, including schwannoma and metastasis, were considered less likely.

A 70-year-old male (Case 2) with a history of multiple tumors, including prostate cancer, colon cancer, gastric cancer, and right arm schwannoma, presented with worsening back pain. MRI of the lumbar spine showed a 3.0 × 1.7 cm intradural extramedullary mass at T12-L1, displacing the spinal cord to the left. The lesion was predominantly hypointense on T1, heterogeneously hyperintense on T2 with a cystic area. The lesion demonstrated heterogeneous enhancement [Figure 2].

There was no signal abnormality in the adjacent spinal cord or syringomyelia. There was no evidence of secondary lesion or leptomeningeal enhancement in the brain, thoracic and upper cervical spine. Ependymoma was the most probable diagnosis, but in view of the patient's history of malignancy, the possibility of metastasis was also considered. Although the patient had a history of schwannoma in the upper extremity, this diagnosis was considered less likely.

PATHOLOGIC FEATURES

The intraoperative impression in Case 1 was that the mass was grossly consistent with ependymoma. The tumor was noted to have both an intramedullary and an extramedullary component. The extramedullary portion of the tumor was completely resected first, and

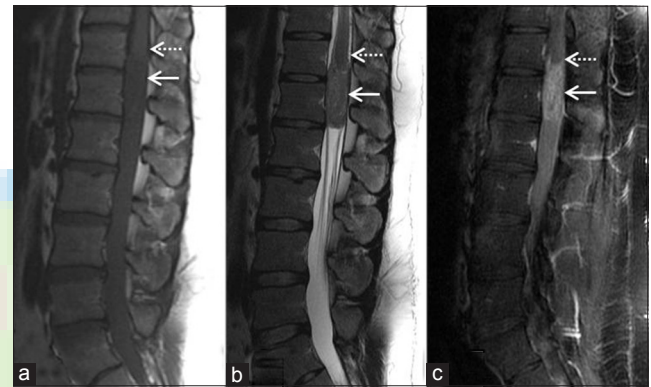


Figure 1: Case 1. 26-year-old male with low back pain diagnosed with Ewing's sarcoma/peripheral neuroectodermal tumor. (a) Magnetic resonance imaging (MRI) sagittal T1 WI image shows a hypointense intradural mass lesion (solid arrow) at the level of the conus medullaris (dashed arrow), (b) MRI Sagittal T2 WI image shows the lesion (solid arrow) to be mildly hyperintense, and (c) MRI sagittal postcontrast T1 WI image shows the lesion (solid arrow) demonstrates heterogeneous enhancement after administration of contrast. The conus cannot be visualized separately from the lesion in all images (dashed arrows).

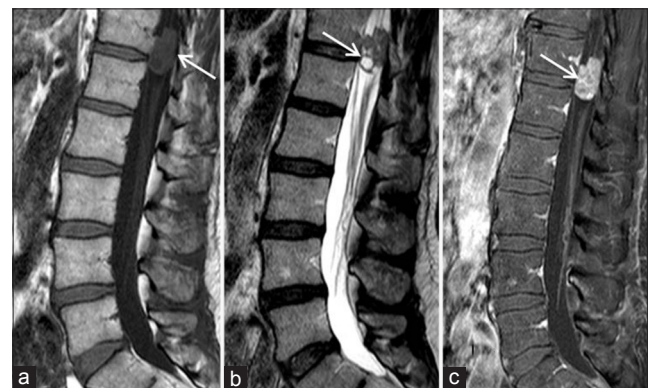


Figure 2: Case 2. 70-year-old male with increasing back pain diagnosed with Ewing's sarcoma/peripheral neuroectodermal tumor. (a) Magnetic resonance imaging (MRI) sagittal T1 WI image shows a hypointense intradural extramedullary mass (arrow) at the level of T12-L1, (b) MRI Sagittal T2 WI image shows a mixed signal intensity, predominantly hyperintense signal mass with a cystic component (arrow), and (c) MRI sagittal postcontrast T1 WI image demonstrates heterogeneous enhancement of the lesion (arrow).

then the intramedullary portion of the tumor was gently dissected off the rootlets with eventual resection of all identified tumor. Intraoperative gross examination in Case 2 revealed a purple-red lobulated mass. Due to extensive entanglement of nerve roots in the tumor, the surgical goal was to debulk as much of the mass as possible while avoiding damage to peripheral nerve function.

Histologic examination of both tumors showed densely packed sheets and nests of small cells with scant cytoplasm and round to ovoid nuclei [Figure 3]. No microscopic features of ependymoma, such as perivascular pseudorosettes or ependymal rosettes, were identified in either case. Due to the nonspecific small blue cell appearance of these tumors, a series of immunohistochemical analyses was performed in each case. The results and interpretation of the various stains are shown in Table 1. The immunohistochemical analysis ruled out lymphoma, Merkel cell carcinoma, rhabdomyosarcoma, ependymblastoma, neuroendocrine carcinoma, Wilms' tumor, germ cell tumor, and prostate cancer. These findings, together with positive staining for cluster of differentiation 99 (CD99) and Friend leukemia integration 1 transcription factor (FLI-1) in Case 1 and positive staining for CD99 in Case 2, increased the likelihood that these tumors were both ES/PNETs.

Over 90% of ES/PNETs have a chromosomal translocation involving the Ewing's sarcoma breakpoint region 1 (ESWR1).^[5] Fluorescent *in-situ* hybridization (FISH) break-apart assay for the *EWSR1* gene rearrangement was performed and revealed that both cases were positive for this rearrangement, confirming the diagnosis of ES/PNET [Figure 4]. In an attempt to identify a specific translocation, both cases were tested using reverse transcription polymerase chain reaction (RT-PCR). No

specific translocation was detected by the RT-PCR assays performed on the tumor in Case 1. The tumor in Case 2 was positive for the presence of the Ewing sarcoma gene-FLI1 gene (EWS-FLI1) fusion transcript associated with ES/PNET.

DISCUSSION

ES/PNETs are aggressive, malignant neoplasms that share histologic features with a number of other tumors. Multimodality therapy with surgery, radiation therapy, and chemotherapy has improved survival in ES/PNET from less than 10% to up to 40%.^[6] Immunohistochemical analysis of small round cell tumors is crucial. In particular, CD99 and FLI-1 are useful in diagnosing ES/PNET, but these markers can also be expressed in other tumors. CD99 shows diffuse membranous positive staining in virtually all cases of ES/PNET; however, CD99 expression is not specific for ES/PNET because rhabdomyosarcomas, lymphoblastic lymphomas/leukemias, synovial sarcomas, solitary fibrous tumors, and neuroendocrine tumors may also demonstrate CD99 positivity.^[7] Positive nuclear staining with FLI-1 is also very sensitive in the diagnosis of ES/PNET, but the FLI-1 antibody will also stain other tumor types, including vascular tumors and lymphoblastic lymphoma.^[8] Because positivity for CD99 and/or FLI-1 is suggestive of but not specific for ES/PNET, it is necessary to include them in a comprehensive panel of immunohistochemical markers that will help rule out muscle, lymphoid, epithelial, germ cell, neuroglial, and Merkel cell tumors.

Once ES/PNET is a top consideration in the pathologic differential diagnosis, molecular studies are needed as a complementary diagnostic tool. *EWSR1* is one of the most commonly involved genes in sarcoma

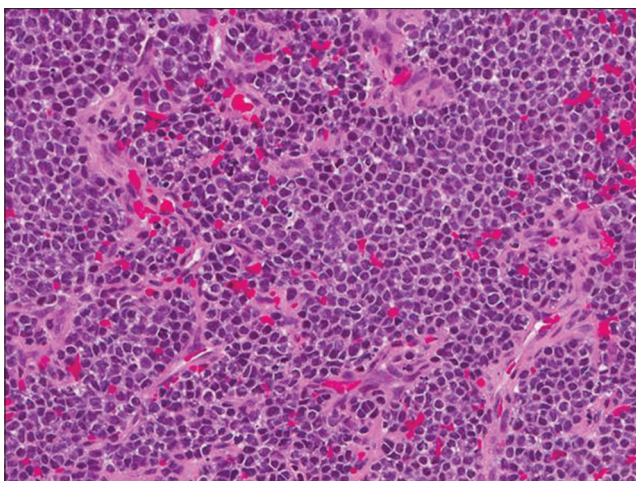


Figure 3: Hematoxylin and eosin stained sections of tumors from both cases (Case 2 shown here) show the classic histologic appearance of a small blue cell neoplasm with nests of small round tumor cells with scanty cytoplasm.

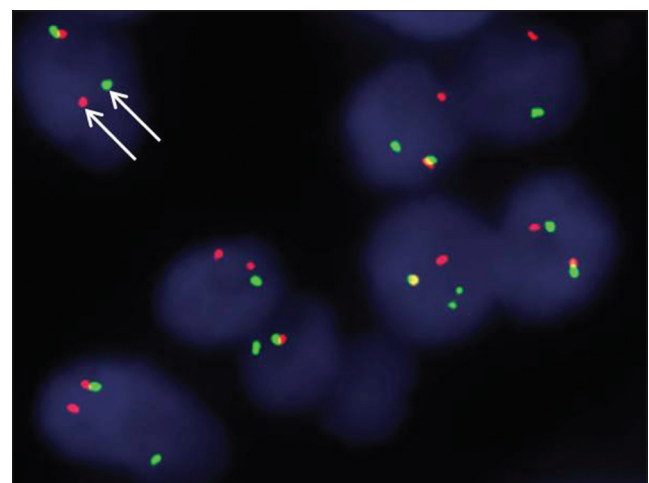


Figure 4: Fluorescent in situ hybridization for Ewing's sarcoma breakpoint region 1 (ESWR1) gene rearrangement performed reveals that the tumors in both cases (Case 2 shown here) are positive for EWSR1 gene rearrangement as indicated by the separation of red and green signals (arrows).

Table 1: Immunohistochemical stain analysis of Case 1 and Case 2

Immunohistochemical stain	Case 1	Case 2	Interpretation
Cluster of differentiation 99	+	+	Supports ES/PNET (sensitive but not specific)
Friend leukemia integration 1 transcription factor	+	Not performed	Supports ES/PNET in context of other IHC results in case 1
Cluster of differentiation 56	Not performed	+	Supports neuroendocrine differentiation in case 2
Neuron-specific enolase	+	-	Supports neuroendocrine differentiation in case 1
Synuclein	+	Not performed	Supports neuroendocrine differentiation in case 1
Cytokeratin pan-cocktail AE1/AE3	+	+	Can be positive in ES/PNET
Wilms' tumor 1	-	-	Rules out Wilms' tumor
Cytokeratin 20	-	-	Rules out Merkel cell carcinoma
Cluster of differentiation 45 and 20	-	-	Rules out lymphoma
Myogenic differentiation 1	-	-	Rules out rhabdomyosarcoma
Glial fibrillary acid protein	-	-	Rules out ependymoblastoma
Placental alkaline phosphatase and octamer-binding transcription factor 4	-	Not performed	Rules out germ cell neoplasm in case 1
Prostate-specific antigen and prostate acid phosphatase	Not performed	-	Rule out metastatic prostatic carcinoma in case 2

IHC: Immunohistochemistry, ES/PNET: Ewing's sarcoma/peripheral neuroectodermal tumor

translocations. ES/PNETs are characterized by specific chromosomal translocations, resulting in a fusion of the *EWSR1* gene (22q12) with one of the members of the E26 transformation-specific family of transcription factors.^[9] FISH break-apart assay confirmed the presence of a translocation involving *EWSR1* in Case 1, but RT-PCR analysis did not detect which specific translocation was present. Several reasons could account for this discrepancy, including sensitivity of PCR to inadequate tissue fixation or insufficient quantity of tumor specimen. Additionally, the tumor from Case 1 may have an EWS-FLI1 exon combination that produces a very long fusion transcript not efficiently amplified from formalin-fixed paraffin-embedded tissue. The patient in Case 2 was 70-years-old, an age group in which ES/PNETs are very uncommon. However, this patient's tumor was found to harbor the EWS-FLI1 translocation, the most common translocation occurring in ES/PNETs. The final diagnosis of ES/PNET in these two cases was made possible by a combination of histological, immunohistochemical, and molecular tests.

MRI is the investigation of choice for the evaluation of lesions within the spinal canal. The tumors described here are primary spinal extraosseous intradural ES/PNETs. On complete imaging workup, there was no evidence of primary lesions elsewhere, to suggest these lesions to be secondary. Primary spinal ES/PNETs are extremely rare, slightly more common in adults than in children and typically located in the region of the filum terminale and cauda equina. Myxopapillary ependymoma is the most common lesion in the region of cauda equina and filum terminale and, therefore, was considered the most likely diagnosis on preoperative imaging. ES/PNET is typically hypointense on T1, hyperintense on T2, and demonstrates heterogeneous enhancement. When associated with hemorrhage, ES/

PNET can have hyperintense signal on T1. CSF seeding may produce leptomeningeal enhancement.^[10] However, other more common masses including ependymoma, schwannoma, and metastasis show similar imaging findings, making it difficult to differentiate ES/PNET from these lesions.^[11] However, if imaging findings of a lesion in the region of the filum terminale and cauda equina are not classical for ependymoma or schwannoma, ES/PNET should be considered, as treatment of this high grade neoplasm is significantly different from the other benign lesions.

CONCLUSION

ES/PNET should be considered in the differential diagnosis of intradural tumors of the spine, despite the low frequency of their occurrence in this location. The diagnostic workup should include imaging, histopathology, immunohistochemical staining, and molecular analysis including both FISH and RT-PCR to identify and characterize the *EWSR1* translocation. All data should be considered as a whole when characterizing small round blue cell tumors, in order to arrive at the correct diagnosis and to assure optimal therapy for the patient.

REFERENCES

1. Aydin R, Bilgici MC, Dagainar A. A very rare cause of neck pain: Primary Ewing sarcoma of the axis. *Pediatr Emerg Care* 2013;29:1197-200.
2. Maki RG. Pediatric sarcomas occurring in adults. *J Surg Oncol* 2008;97:360-8.
3. Rossi S, Orvieto E, Furlanetto A, Laurino L, Ninfo V, Dei Tos AP. Utility of the immunohistochemical detection of FLI-1 expression in round cell and vascular neoplasm using a monoclonal antibody. *Mod Pathol* 2004;17:547-52.
4. Yan Y, Xu T, Chen J, Hu G, Lu Y. Intraspinal Ewing's sarcoma/primitive neuroectodermal tumors. *J Clin Neurosci* 2011;18:601-6.
5. Yamaguchi U, Hasegawa T, Morimoto Y, Tateishi U, Endo M, Nakatani F, et al. A practical approach to the clinical diagnosis of Ewing's sarcoma/

- primitive neuroectodermal tumour and other small round cell tumours sharing EWS rearrangement using new fluorescence *in situ* hybridisation probes for EWSR1 on formalin fixed, paraffin wax embedded tissue. *J Clin Pathol* 2005;58:1051-6.
6. Romeo S, Dei Tos AP. Soft tissue tumors associated with EWSR1 translocation. *Virchows Arch* 2010;456:219-34.
 7. Wick MR. Immunohistochemical approaches to the diagnosis of undifferentiated malignant tumors. *Ann Diagn Pathol* 2008;12:72-84.
 8. Khoury JD. Ewing sarcoma family of tumors. *Adv Anat Pathol* 2005;12:212-20.
 9. Gamberi G, Cocchi S, Benini S, Magagnoli G, Morandi L, Kreshak J, et al. Molecular diagnosis in Ewing family tumors: The Rizzoli experience—222 consecutive cases in four years. *J Mol Diagn* 2011;13:313-24.
 10. Wein S, Gaillard F. Intradural spinal tumours and their mimics: A review of radiographic features. *Postgrad Med J* 2013;89:457-69.
 11. Murphey MD, Senchak LT, Mambalam PK, Logie CI, Klassen-Fischer MK, Kransdorf MJ. From the radiologic pathology archives: Ewing sarcoma family of tumors: Radiologic-pathologic correlation. *Radiographics* 2013;33:808-31.

Source of Support: Nil, **Conflict of Interest:** None declared.

